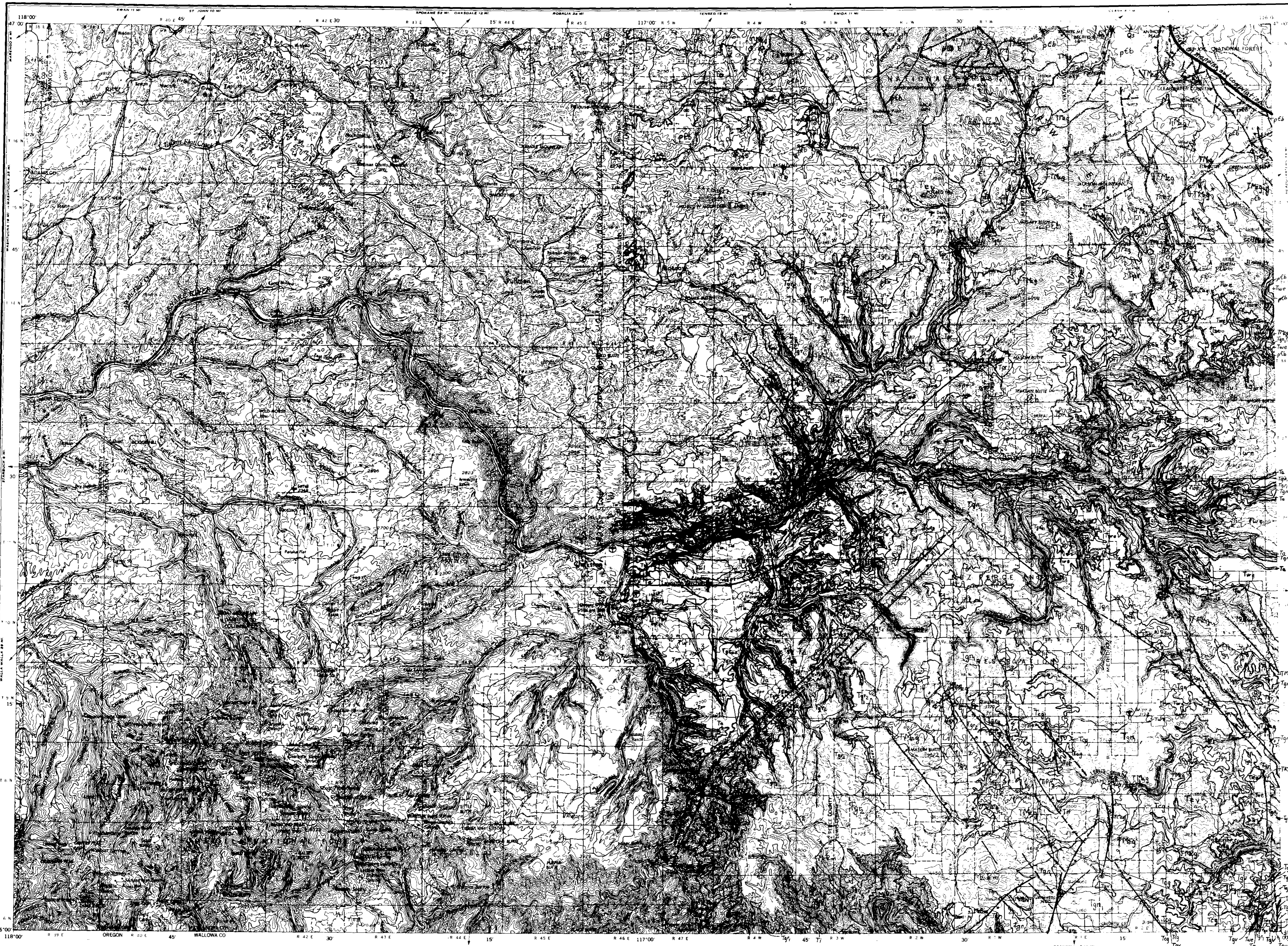


WESTERN UNITED STATES 1:250,000

PULLMAN



UNIVERSITY OF WASHINGTON
GEOLOGICAL SURVEY

Prepared by the Army Map Service (ESCS), Corps of Engineers, U.S. Army, Washington, D.C. Compiled in 1955 by photogrammetric methods and from USGS and USCE quadrangles 1:50,000, 1:62,500 and 1:125,000, 1942-53. Planimetric control based by photogrammetric methods. Horizontal and vertical control by USGS, USC&GS, USFS, and USCE. Map field checked 1955. Limited revision by U.S. Geological Survey, 1965.

This report is preliminary and has not been edited or reviewed for conformity with Geological Survey standards and nomenclature.

LEGEND
PARTIALLY REVISED 1962

ROAD DATA 1955

POPULATED PLACES

ROADS

RAILROADS

LANDMARKS

POPULATED PLACES

RAILROADS

LANDMARKS

POPULATED PLACES

RAILROADS

LANDMARKS

Scale 1:250,000

0 5 10 15 20 25 30 Kilometers

0 5 10 15 20 25 30 Nautical Miles

CONTOUR INTERVAL 200 FEET
WITH SUPPLEMENTARY CONTOURS AT 100 FOOT INTERVALS

TRANSVERSE MERCATOR PROJECTION

1960 MAGNETIC DECLINATION FOR THIS SHEET VARIES FROM 50' EAST (FOR THE CENTER OF THE WEST EDGE TO 10' EAST FOR THE CENTER OF THE EAST EDGE. NEAR ANNUAL CHANGE IS 0.02" WESTERLY.

LOCATION DIAGRAM FOR NL 11-5

NM 10 12 NM 11 10 NM 11 11 NM 11 12 NM 12 10
NL 10 8 NL 11 8 NL 11 9 NL 11 10 NL 11 11 NL 11 12 NL 12 11
WASHINGTON MONTANA
NL 10 6 NL 11 7 NL 11 8 NL 11 9 NL 12 4
NL 10 9 NL 11 7 NL 11 8 NL 11 9 NL 12 7
IDAHO
OREGON
NL 10 12 NL 11 11 NL 11 12 NL 12 10

RELIABILITY DIAGRAM

MR 8608 INTERIOR-GEOLOGICAL SURVEY WASHINGTON D.C. 1963

Basalt mapped in 1978-79. The map and report by Bond (1963) was especially helpful. Prebasalt geology modified from Bond (1978) and Rember and Bennett (in press)

RECONNAISSANCE GEOLOGIC MAP OF THE COLUMBIA RIVER BASALT GROUP IN EASTERN WASHINGTON AND NORTHERN IDAHO

BY D.A. SWANSON, J.L. ANDERSON, R.D. BENTLEY, G.R. BYERLY, V.E. CAMP, J.N. GARDNER, AND T.L. WRIGHT

PULLMAN, WASHINGTON; IDAHO
1955