

FC  
USGS  
OFR  
77-66C

## UNITED STATES DEPARTMENT OF INTERIOR

## GEOLOGICAL SURVEY

Telluric profile location map and telluric  
data for the Baltazor Known Geothermal  
Resource Area, Nevada

Humboldt Co.

By

D. B. Hoover, D. L. Peterson, and Vladimir Farkash

Open-File Report 77-66C  
1977

This report is preliminary and has not been  
edited or reviewed for conformity with U.S.  
Geological Survey standards and nomenclature.

UNIVERSITY OF UTAH  
RESEARCH INSTITUTE  
EARTH SCIENCE LAB.

UNIVERSITY OF UTAH  
RESEARCH INSTITUTE  
EARTH SCIENCE LAB.

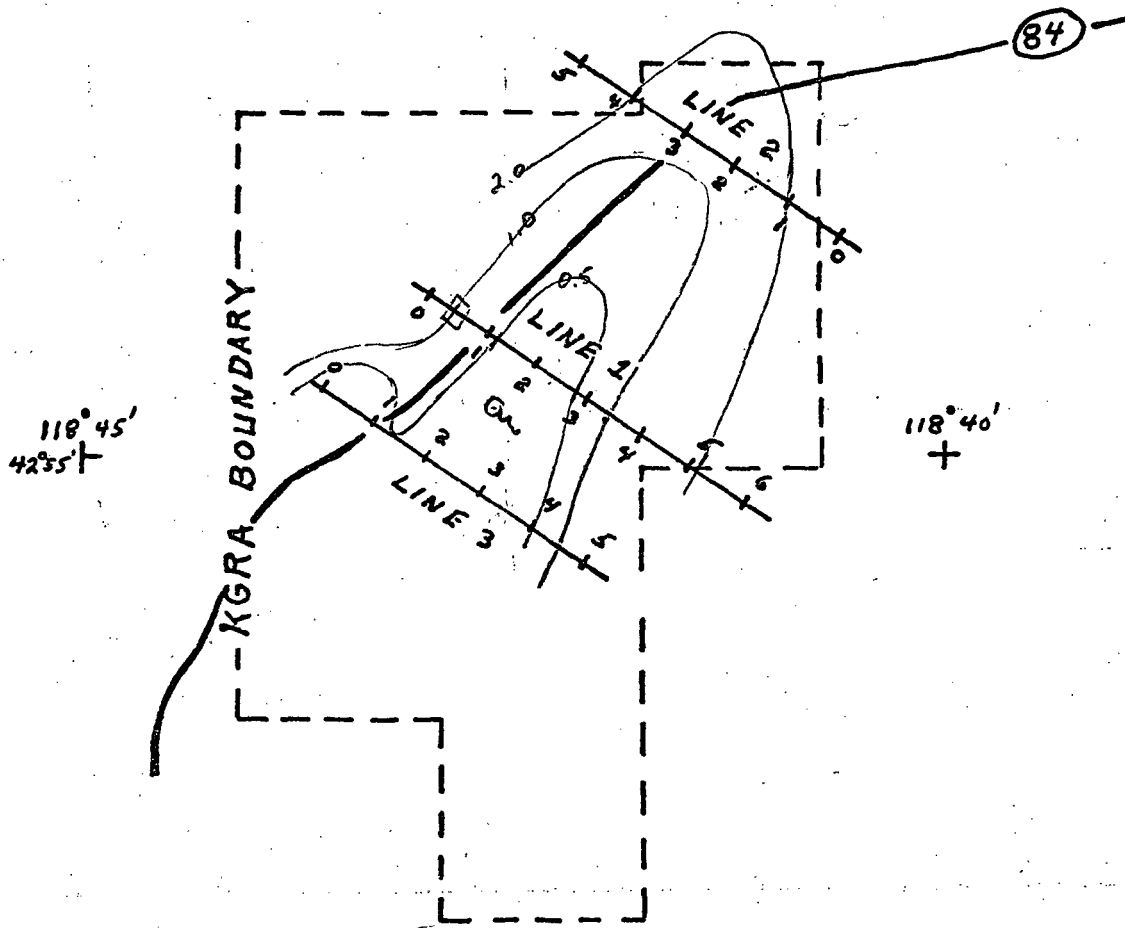


Figure 1. Telluric traverse location map for the Baltazor Known Geothermal Resource Area (KGRA), Nevada

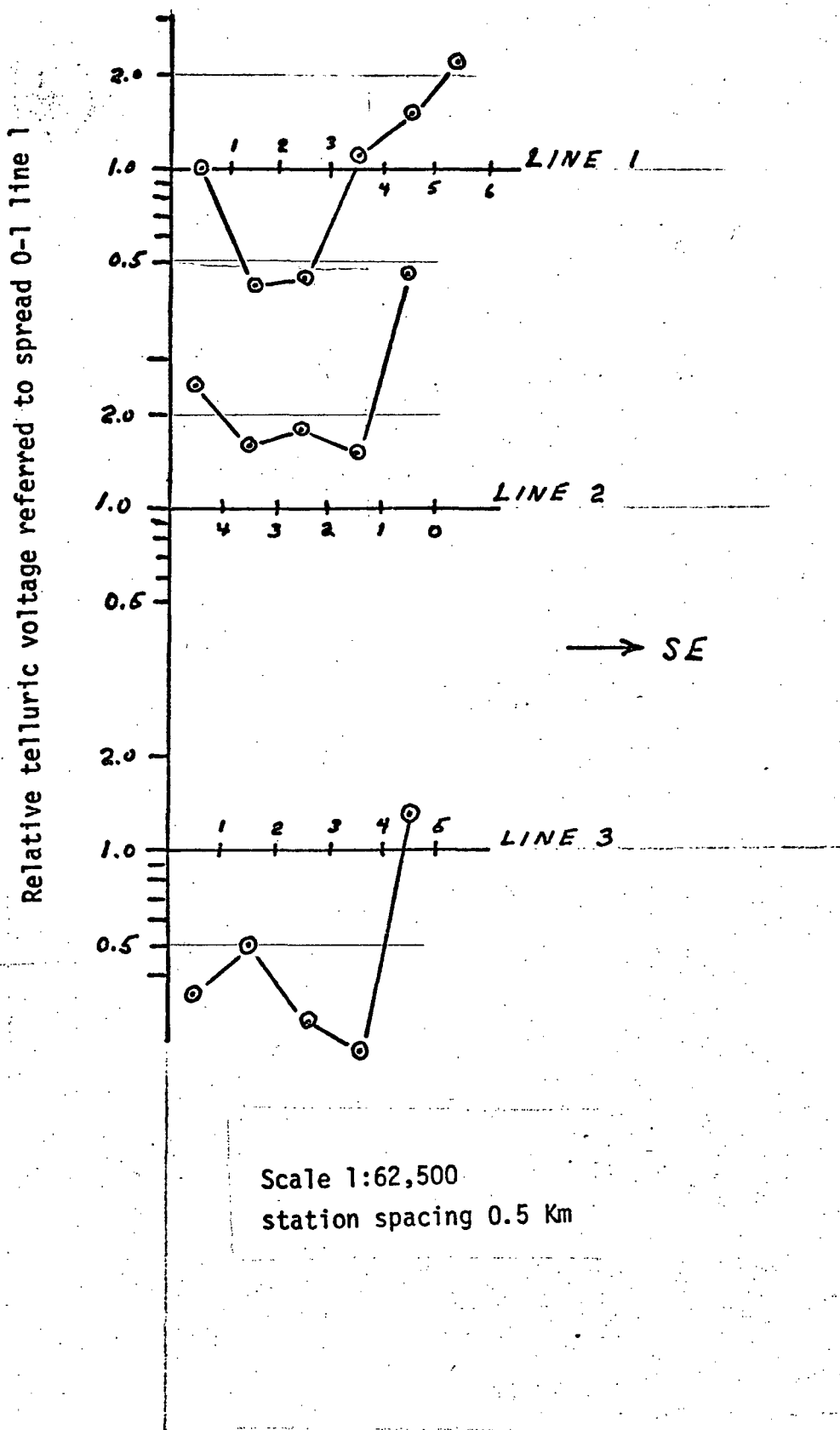


Figure 2. Telluric profile data for the Baltazor Known Geothermal Resource Area (KGRA), Nevada