

FC  
USGS  
OFR  
78-106A

UNITED STATES DEPARTMENT OF THE INTERIOR

GEOLOGICAL SURVEY

Telluric traverse location map and profiles  
for Double Hot Springs Known Geothermal  
Resource Area, Nevada

*Humboldt*

By

R. M. Senterfit, D. B. Hoover, and K. Christopherson.

Open-File Report 78-106A

1978

This report is preliminary and has not been  
edited or reviewed for conformity with U.S.  
Geological Survey standards and nomenclature.

**UNIVERSITY OF UTAH  
RESEARCH INSTITUTE  
EARTH SCIENCE LAB.**

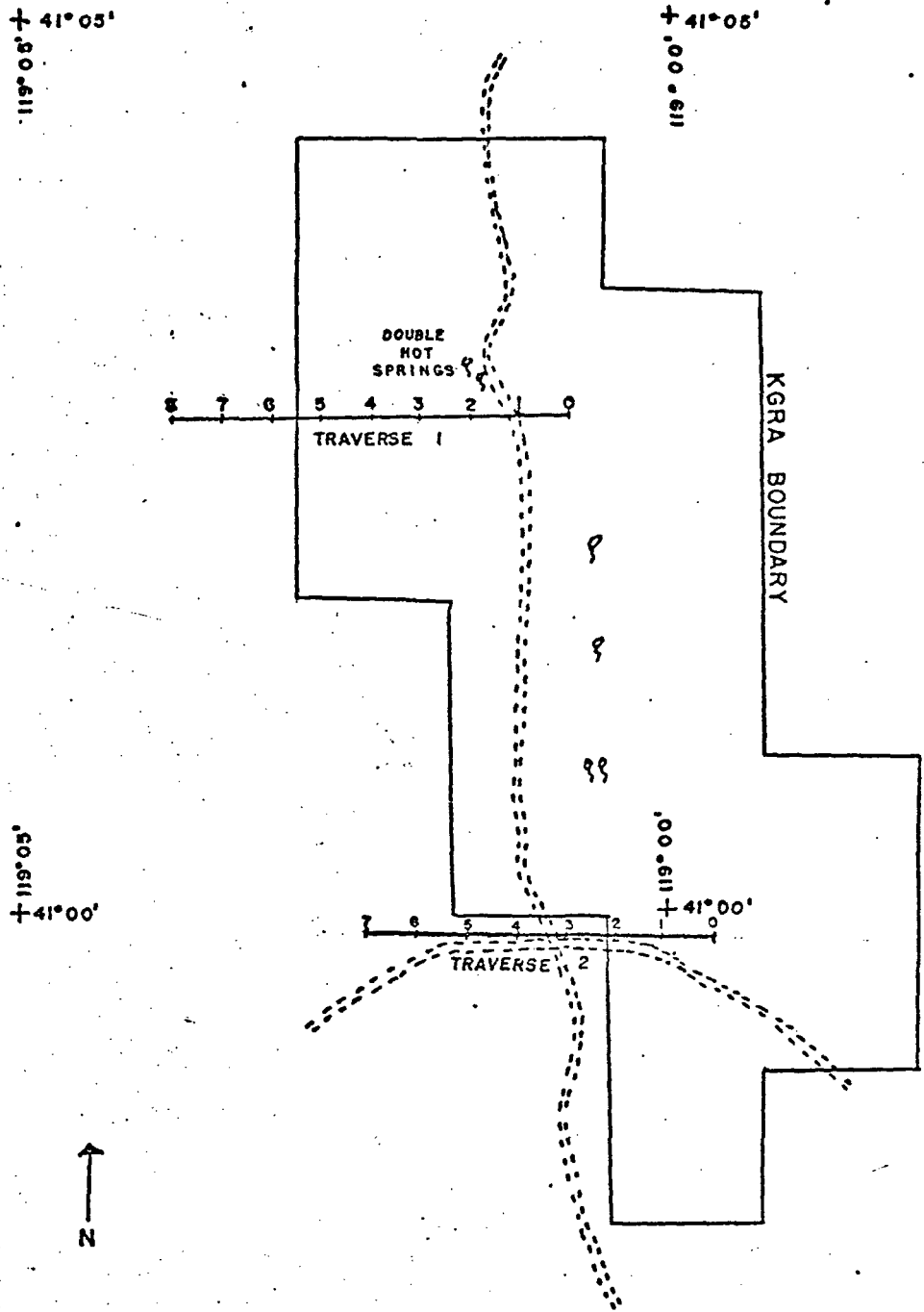
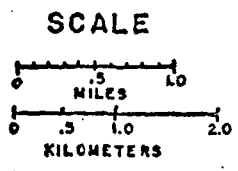


FIGURE 1. TELLURIC PROFILES STATION LOCATION MAP  
 DOUBLE HOT SPRINGS KNOWN GEOTHERMAL RESEARCH AREA, NEVADA



1977  
 BY

R.M. SENTERFIT, D.B. HOOVER & K. CHRISTOPHERSON



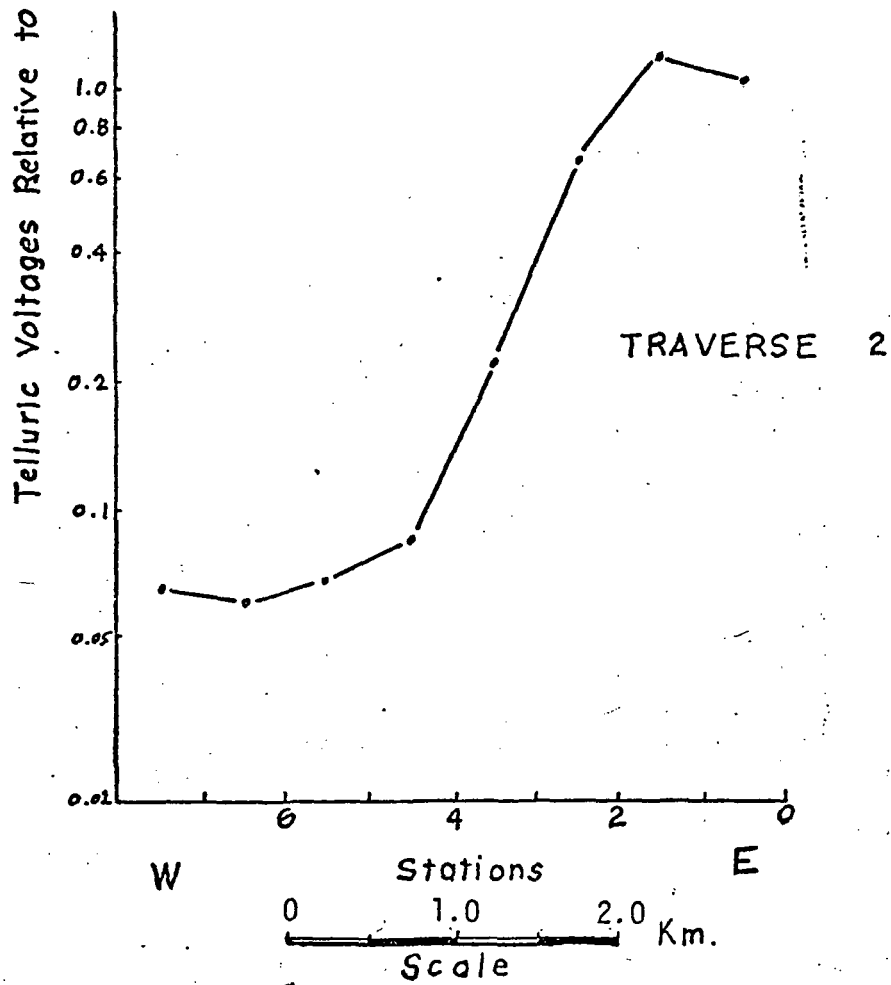
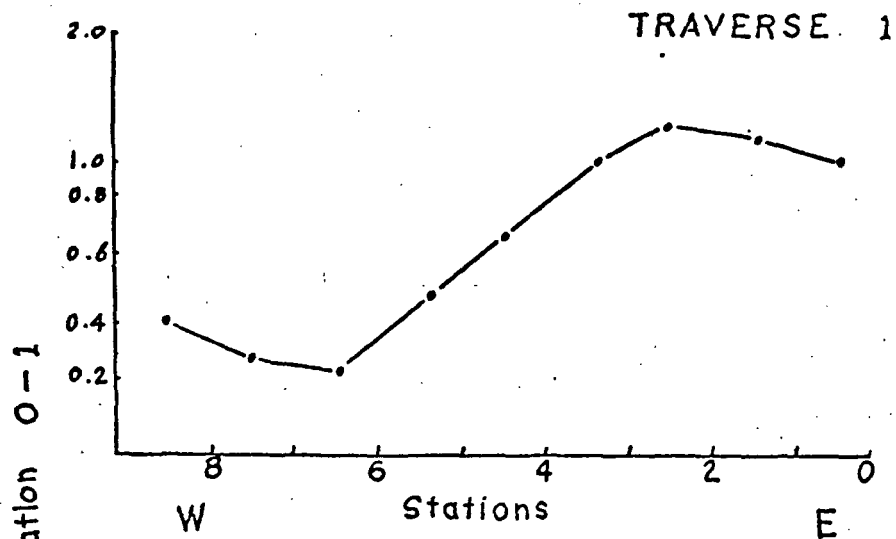


FIGURE 2. TELLURIC PROFILES

DOUBLE HOT SPRINGS KGRA - NEVADA