

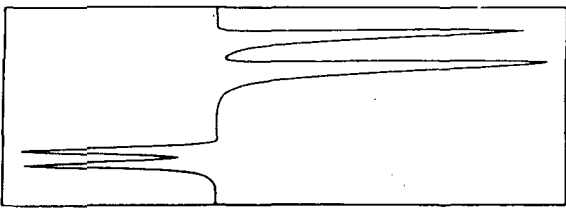
THERMOCHEM

July 9, 1992

### Steam Isokinetic Probe Sampling Data

- 3. Date Tested: 06-24-92 Time: 15:03-15:55
- 4. Pressure: 122 psig Baro: 12.5 psia
- 5. Saturation Temperature: 350°F
- 6. Steam Mass Flowrate: 100 KPH
- 7. Scrubbing/Desuperheat: Off
- 8. Injection Rate: ---
- 9. Separator Dump Rate: --
- 10. Pipeline/Casing I.D.: 22 inch
- 11. Probe Nozzle I.D.: 3/8 inch
- 12. Average % Isokinetic: 101%
- 13. Number of Traverse Points: 5
- 14. Layout Specification: EPA 1

Time	Traverse Point Locations, Distance from Wall Opposite Port	Temperature at Probe Outlet	Sample Rate g/min	Temperature at Traverse Point
15:03-15:06	1. 1.5 in	398-404°F	225	459°F
15:15-15:17	2. 5.75 in	407-411°F	226	459°F
15:22-15:25	3. 11.5 in	392-400°F	222	459°F
15:30-15:32	4. 17.25 in	380-390°F	219	459°F
15:37-15:40	5. 20.5 in	372-378°F	223	459°F
15:45-15:55	6. 20.5 in	350-352°F	106	459°F



THERMOCHEM

July 10, 1992

Mike Adams  
U.U.R.I.  
391 Chipeta Way, Suite A  
Salt Lake City, UT 84108

## Report of Analysis

Lab Number:

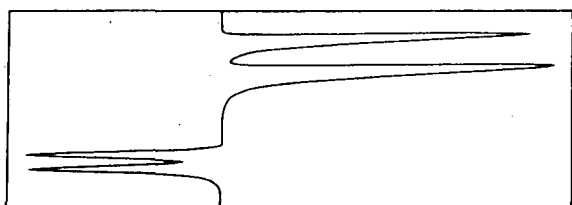
Descriptor: Isokinetic Probe @ 1.5" from bottom of line  
06-24-92 15:03

<u>Analyte</u>	<u>mq/kg</u>	<u>Analyte</u>	<u>mq/kg</u>
Chloride	6.62	Arsenic	0.099
Fluoride	0.096	Sodium	<0.0050
Silica	0.068	Ammonia	4.57
Boron	14.7		

Lab Number:

Descriptor: Isokinetic Probe @ 1.5" from bottom of line  
06-24-92 15:06

<u>Analyte</u>	<u>mq/kg</u>	<u>Analyte</u>	<u>mq/kg</u>
Chloride	8.07	Arsenic	0.095
Fluoride	0.096	Sodium	0.19
Silica	0.082	Ammonia	5.14
Boron	15.0		



THE THERMOCHEM

July 10, 1992

Mike Adams  
U.U.R.I.  
391 Chipeta Way, Suite A  
Salt Lake City, UT 84108

## Report of Analysis

Lab Number:

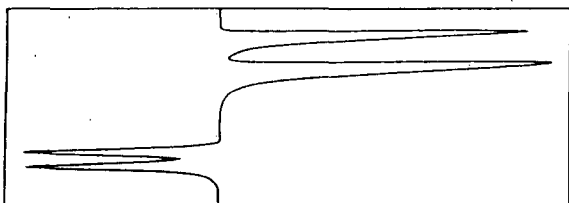
Descriptor: Isokinetic Probe @ 5.75" from bottom of line  
06-24-92 15:15

<u>Analyte</u>	<u>mq/kg</u>	<u>Analyte</u>	<u>mq/kg</u>
Chloride	7.41	Arsenic	0.086
Fluoride	0.095	Sodium	0.031
Silica	0.082	Ammonia	4.52
Boron	14.5		

Lab Number:

Descriptor: Isokinetic Probe @ 5.75" from bottom of line  
06-24-92 15:17

<u>Analyte</u>	<u>mq/kg</u>	<u>Analyte</u>	<u>mq/kg</u>
Chloride	7.01	Arsenic	0.091
Fluoride	0.093	Sodium	<0.0050
Silica	0.086	Ammonia	4.56
Boron	14.0		



THERMOCHEM

July 10, 1992

Mike Adams  
U.U.R.I.  
391 Chipeta Way, Suite A  
Salt Lake City, UT 84108

## Report of Analysis

Lab Number:

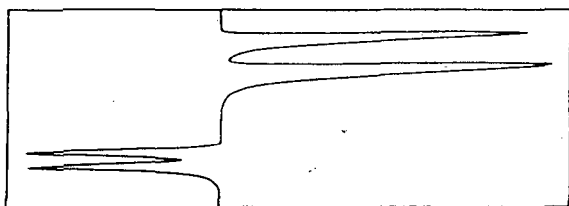
Descriptor: Isokinetic Probe @ 11.5" from bottom of line  
06-24-92 15:22

<u>Analyte</u>	<u>mq/kg</u>	<u>Analyte</u>	<u>mq/kg</u>
Chloride	6.79	Arsenic	0.077
Fluoride	0.092	Sodium	<0.0050
Silica	0.077	Ammonia	4.65
Boron	14.8		

Lab Number:

Descriptor: Isokinetic Probe @ 11.5" from bottom of line  
06-24-92 15:25

<u>Analyte</u>	<u>mq/kg</u>	<u>Analyte</u>	<u>mq/kg</u>
Chloride	7.48	Arsenic	0.082
Fluoride	0.094	Sodium	0.0050
Silica	0.073	Ammonia	4.63
Boron	14.5		



THEMOCHEM

July 10, 1992

Mike Adams  
U.U.R.I.  
391 Chipeta Way, Suite A  
Salt Lake City, UT 84108

## Report of Analysis

Lab Number:

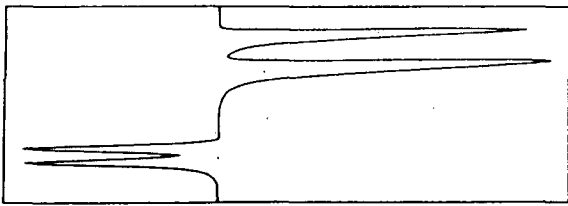
Descriptor: Isokinetic Probe @ 17.25" from bottom of line  
06-24-92 15:30

<u>Analyte</u>	<u>mq/kg</u>	<u>Analyte</u>	<u>mq/kg</u>
Chloride	6.85	Arsenic	0.082
Fluoride	0.093	Sodium	<0.0050
Silica	0.068	Ammonia	4.58
Boron	14.2		

Lab Number:

Descriptor: Isokinetic Probe @ 17.25" from bottom of line  
06-24-92 15:32

<u>Analyte</u>	<u>mq/kg</u>	<u>Analyte</u>	<u>mq/kg</u>
Chloride	7.15	Arsenic	0.082
Fluoride	0.094	Sodium	0.012
Silica	0.073	Ammonia	4.26
Boron	14.5		



THE R M O C H E M

July 10, 1992

Mike Adams  
U.U.R.I.  
391 Chipeta Way, Suite A  
Salt Lake City, UT 84108

## Report of Analysis

**Lab Number:**

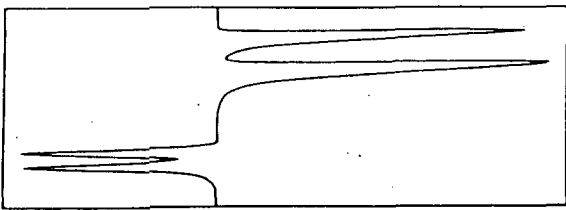
**Descriptor:** Isokinetic Probe @ 20.5" from bottom of line  
06-24-92 15:37

<u>Analyte</u>	<u>mg/kg</u>	<u>Analyte</u>	<u>mg/kg</u>
Chloride	6.44	Arsenic	0.065
Fluoride	0.085	Sodium	<0.0050
Silica	0.140	Ammonia	4.40
Boron	13.5		

**Lab Number:**

**Descriptor:** Isokinetic Probe @ 20.5" from bottom of line  
06-24-92 15:40

<u>Analyte</u>	<u>mg/kg</u>	<u>Analyte</u>	<u>mg/kg</u>
Chloride	6.60	Arsenic	0.070
Fluoride	0.087	Sodium	0.011
Silica	0.154	Ammonia	4.52
Boron	13.8		



THEMOCHEM

July 10, 1992

Mike Adams  
U.U.R.I.  
391 Chipeta Way, Suite A  
Salt Lake City, UT 84108

## Report of Analysis

Lab Number:

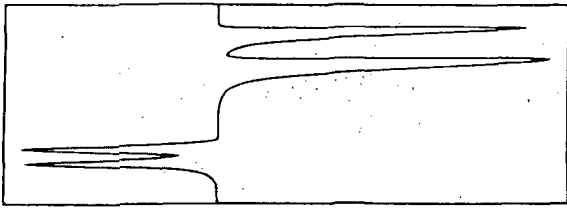
Descriptor: Isokinetic Probe @ 20.5" (sample rate reduced by 50%)  
06-24-92 15:45

<u>Analyte</u>	<u>mq/kg</u>	<u>Analyte</u>	<u>mq/kg</u>
Chloride	6.26	Arsenic	0.051
Fluoride	0.080	Sodium	0.011
Silica	0.490	Ammonia	3.65
Boron	10.9		

Lab Number:

Descriptor: Isokinetic Probe @ 20.5" (sample rate reduced by 50%)  
06-24-92 15:50

<u>Analyte</u>	<u>mq/kg</u>	<u>Analyte</u>	<u>mq/kg</u>
Chloride	6.57	Arsenic	0.052
Fluoride	0.083	Sodium	0.0085
Silica	0.485	Ammonia	3.99
Boron	12.8		



THERMOCHEM

July 10, 1992

Mike Adams  
U.U.R.I.  
391 Chipeta Way, Suite A  
Salt Lake City, UT 84108

## Report of Analysis

Lab Number:

Descriptor: Isokinetic Probe @ 20.5" (sample rate reduced by 50%)  
06-24-92 15:55

<u>Analyte</u>	<u>mg/kg</u>	<u>Analyte</u>	<u>mg/kg</u>
Chloride	3.98	Arsenic	0.029
Fluoride	0.084	Sodium	0.0078
Silica	0.348	Ammonia	3.44
Boron	10.6		