

Figure 8 Aeromagnetic map of Alamosa basin, Colorado (C.I. 20 and 100 Gammas) After Zietz and Kirby, 1972. For well names see Fig.9.

scale $\approx 1:500,000$

Look at State Aeromag. Map
Compare

ALAMOSA HWY 285 W. July 13, 1981

Neil Kaapp
house #4469
Monte
Vista HWY

3/2

02

04

06

08

100

200

+5000 AS

630

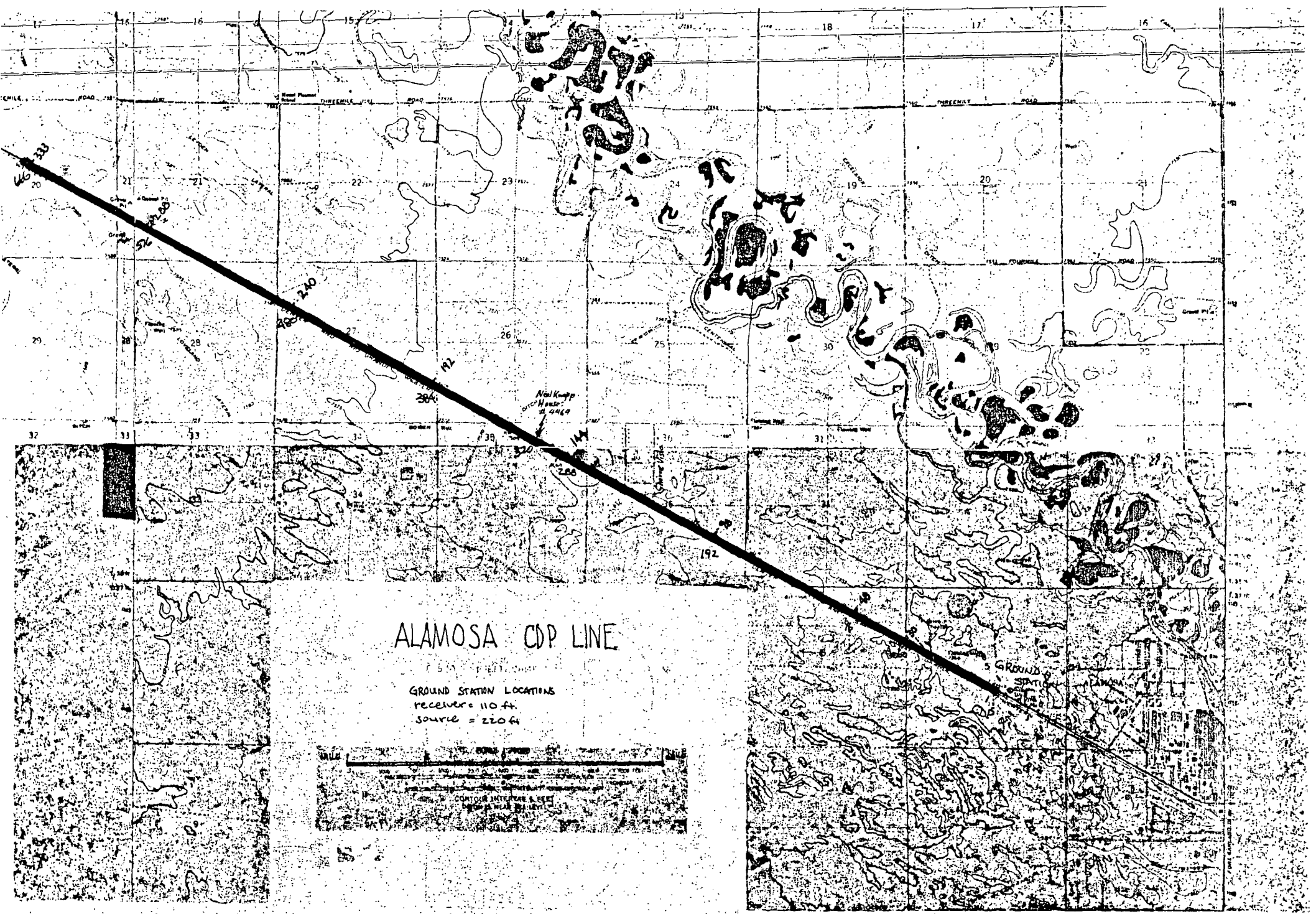
-1000 AS

-1420

1500 AS

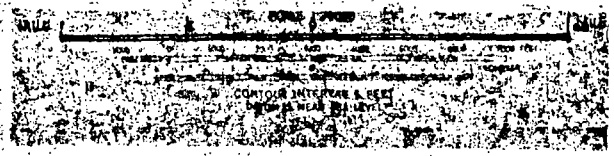
2000 AS

11



ALAMOSA CDP LINE

GROUND STATION LOCATIONS
receiver = 110 ft.
source = 220 ft.



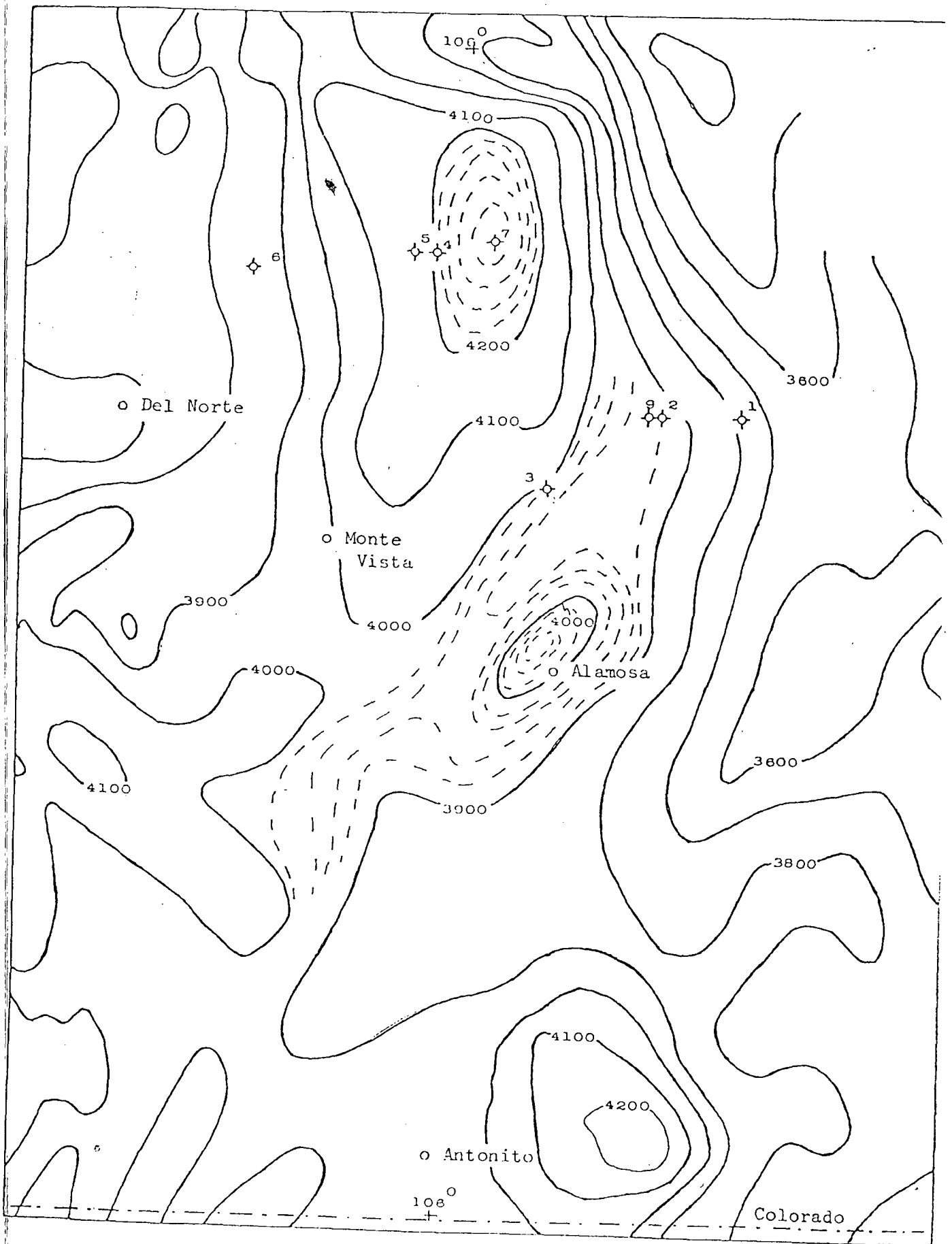
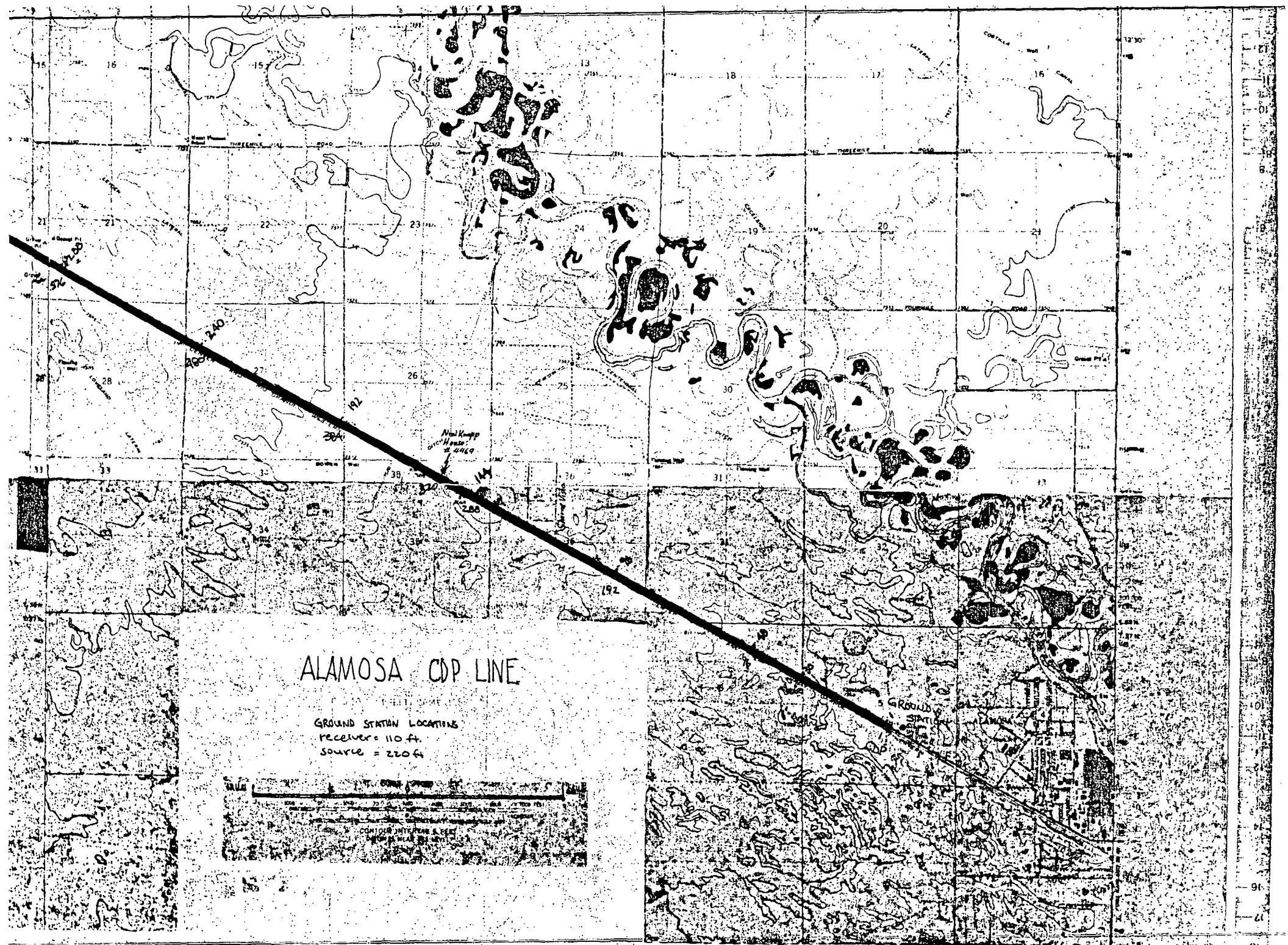
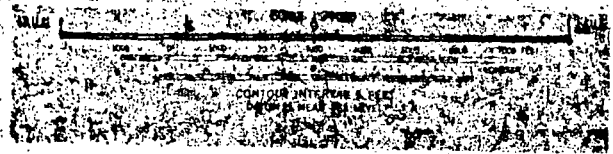


Figure 8 Aeromagnetic map of Alamosa basin, Colorado (C.I. 20 and 100 Gammas) After Zietz and Kirby, 1972. For well names see Fig.9.



ALAMOSA CDP LINE

GROUND STATION LOCATIONS
Receiver = 110 ft.
Source = 220 ft.



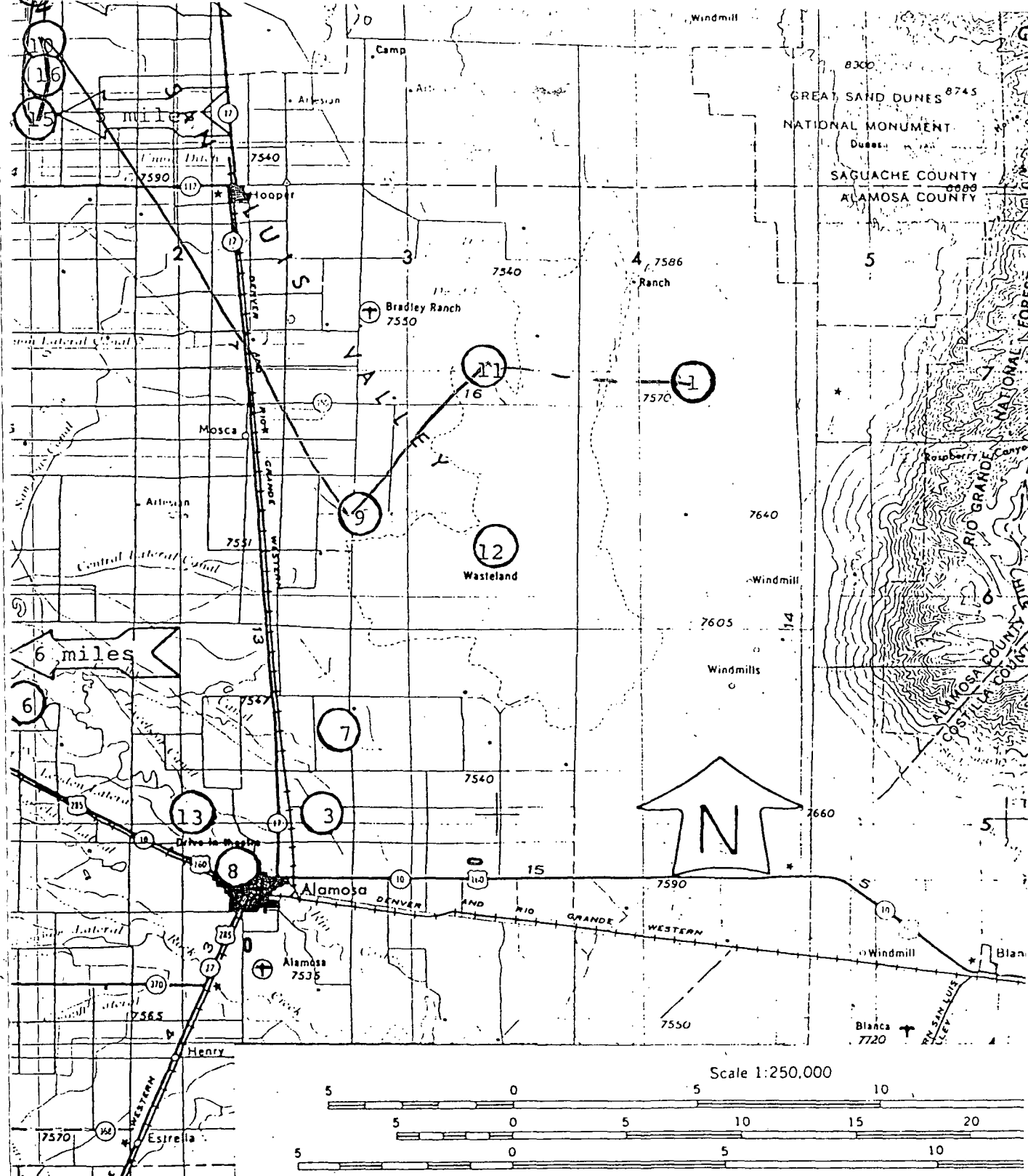
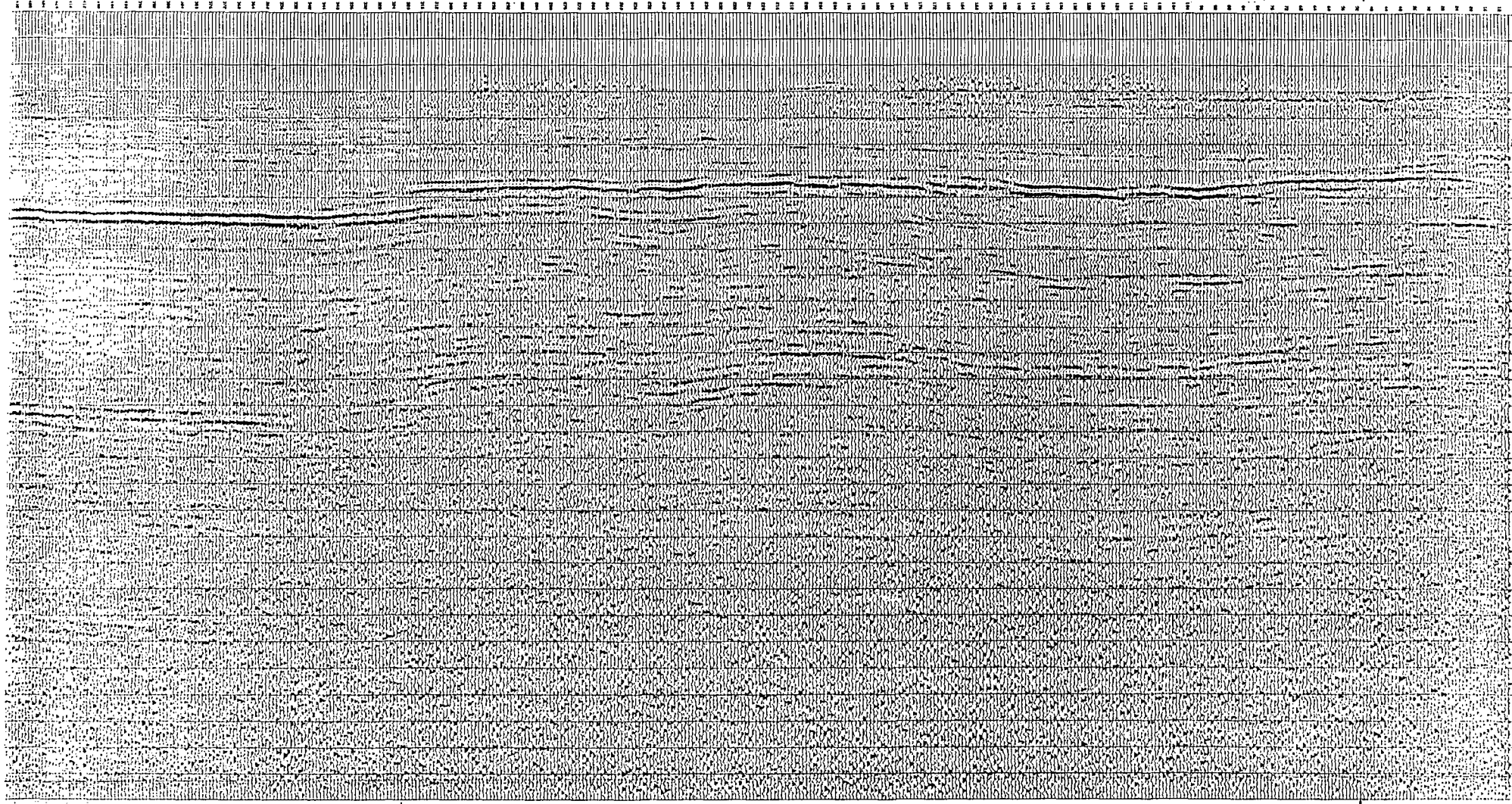


Figure 3

CONTOUR INTERVAL 200 FEET
WITH SUPPLEMENTARY CONTOURS AT 100 FOOT INTERVAL





pp
469

IV

ENTER

THE UNIVERSITY OF
MICHIGAN LIBRARY
SERIALS ACQUISITION
300 NORTH ZEEB ROAD
ANN ARBOR, MI 48106-1500
TEL: 734 763 5000
FAX: 734 763 5001
WWW: LIBRARY.MICHIGAN.EDU

ALAMOSA HWY 285 W. July 13, 1981

Neil Knapp
house #4169
Monte
Vista HWY

Missing Data

4000 ft

Missing Data