


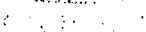

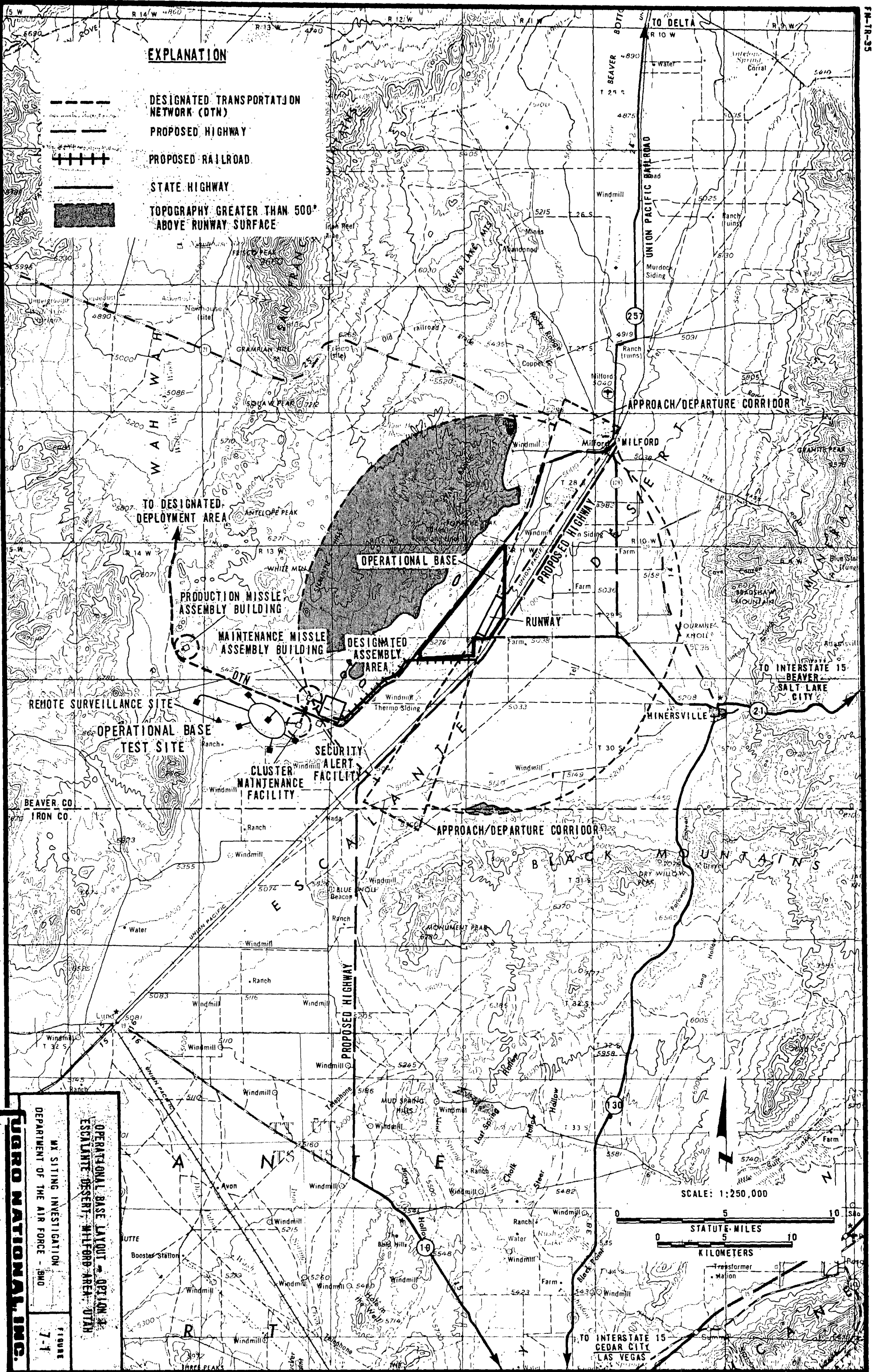
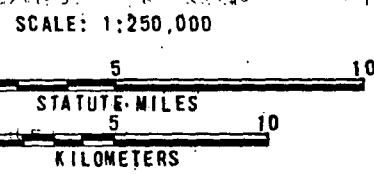


EXPLANATION

-  DESIGNATED TRANSPORTATION NETWORK (DTN)
-  PROPOSED HIGHWAY
-  PROPOSED RAILROAD
-  STATE HIGHWAY
-  TOPOGRAPHY GREATER THAN 500' ABOVE RUNWAY SURFACE

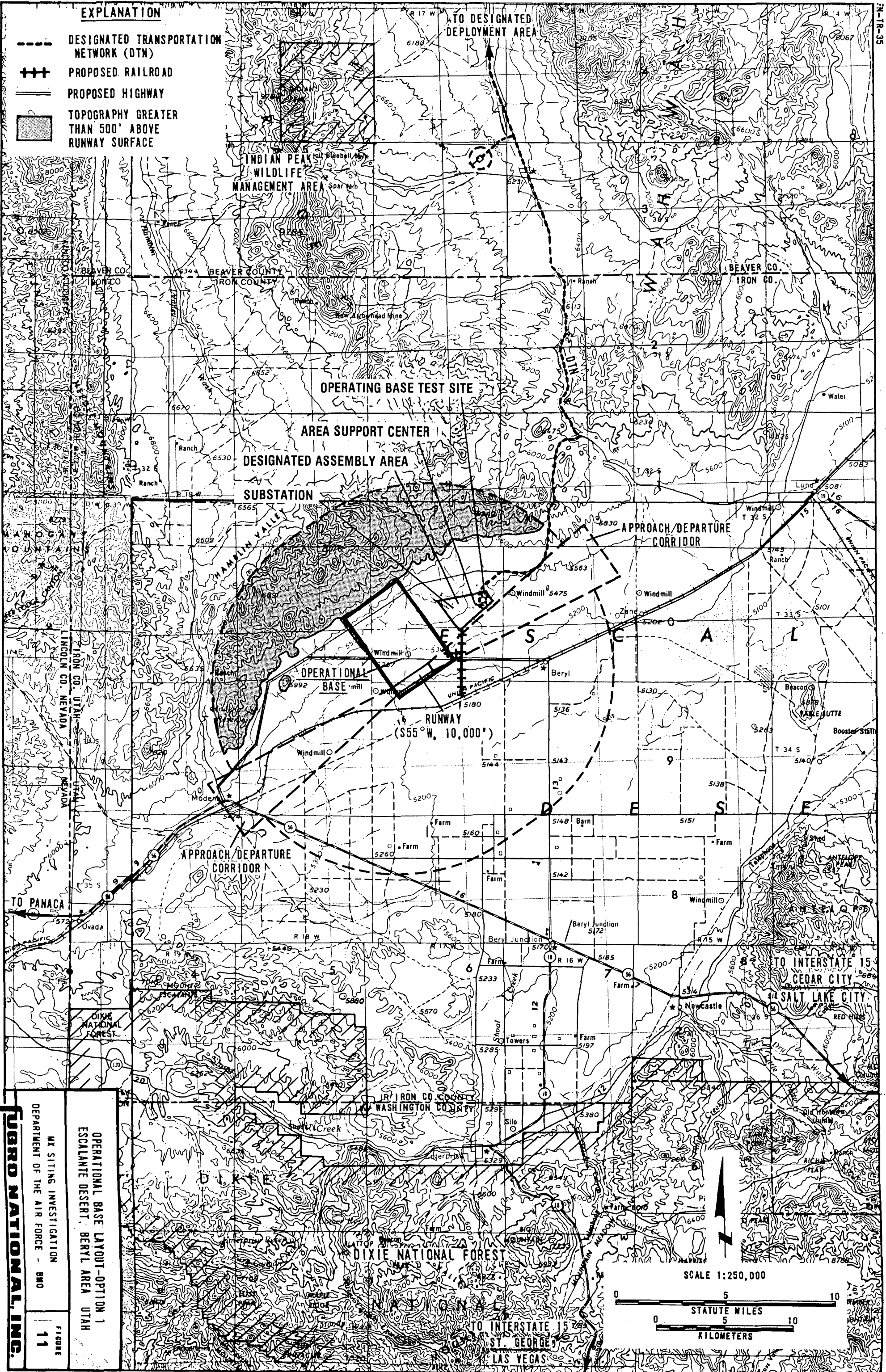


UGRO NATIONAL INC.
 MX SITING INVESTIGATION
 DEPARTMENT OF THE AIR FORCE - IAWO
 FIGURE 7-1
**OPERATIONAL BASE LAYOUT - OPTION 3
 ESCALANTE DESERT - MILFORD AREA - UTAH**



EXPLANATION

- DESIGNATED TRANSPORTATION NETWORK (DTN)
- ++ PROPOSED RAILROAD
- == PROPOSED HIGHWAY
- TOPOGRAPHY GREATER THAN 500' ABOVE RUNWAY SURFACE



DURO NATIONAL, INC.

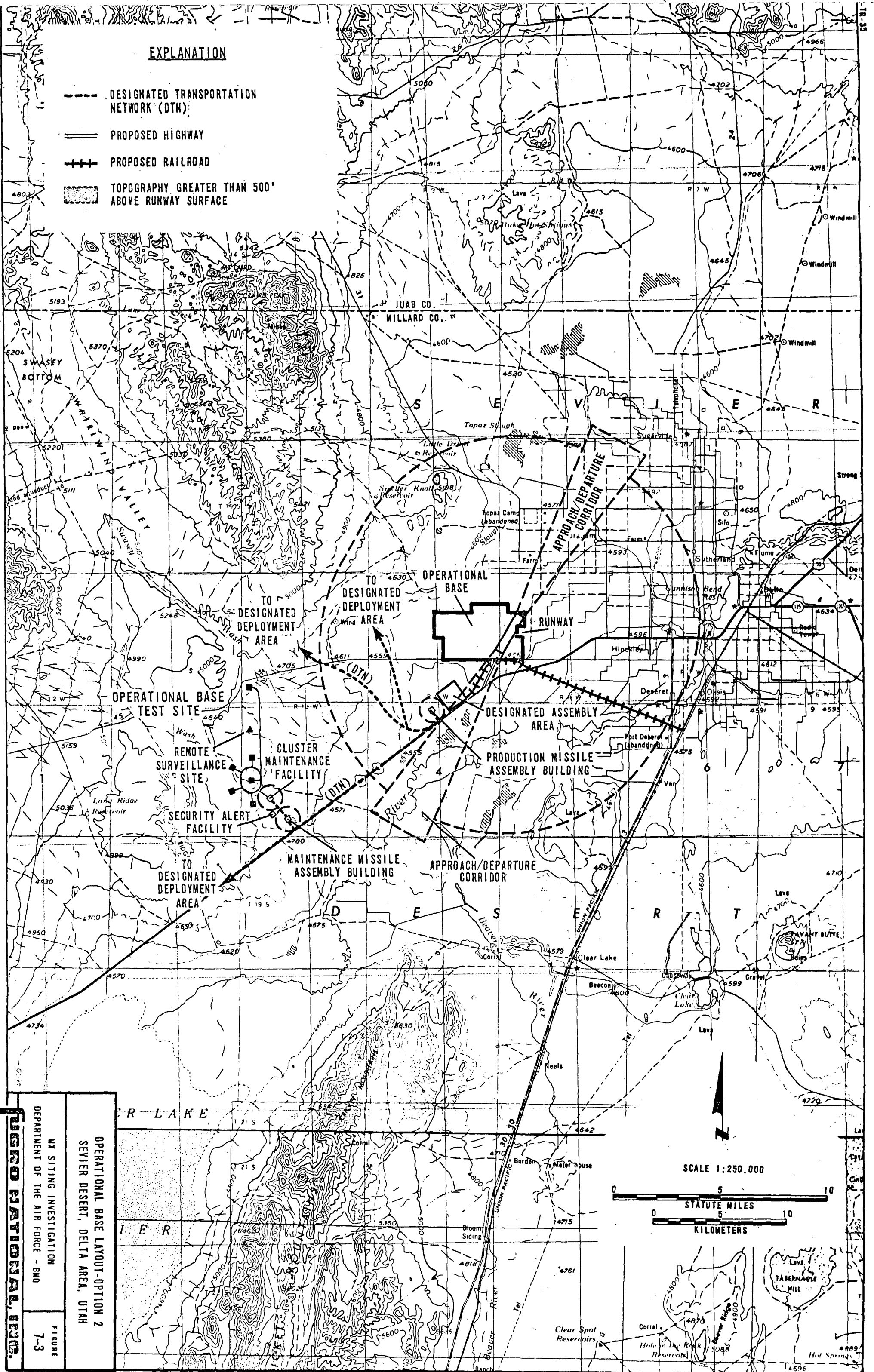
MX SITING INVESTIGATION
DEPARTMENT OF THE AIR FORCE - BMD

OPERATIONAL BASE LAYOUT-OPTION 1
ESCALANTE DESERT, BERYL AREA UTAH

FIGURE 11

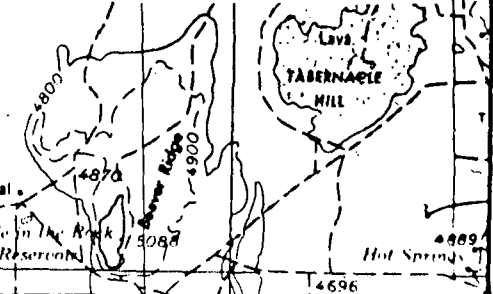
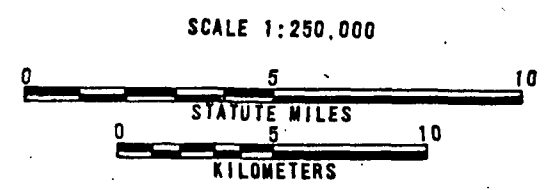
EXPLANATION

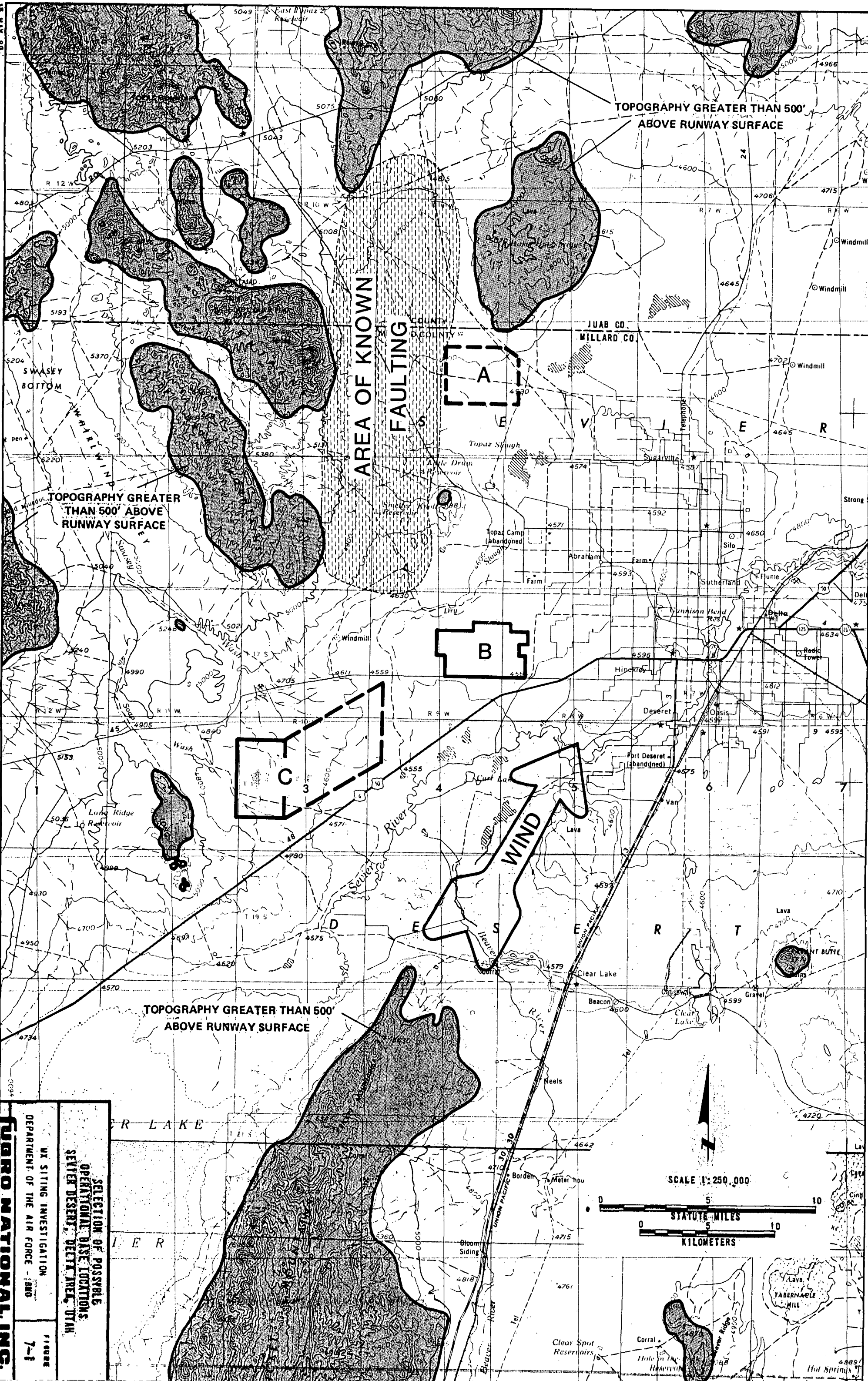
- DESIGNATED TRANSPORTATION NETWORK (DTN)
- == PROPOSED HIGHWAY
- +++ PROPOSED RAILROAD
- ▨ TOPOGRAPHY GREATER THAN 500' ABOVE RUNWAY SURFACE



GENERAL INVESTIGATIONS
 DEPARTMENT OF THE AIR FORCE - BMD
FIGURE 7-3






OPERATIONAL BASE LAYOUT - OPTION 2
 SEVIER DESERT, DELTA AREA, UTAH





TIORO NATIONAL INC.
 DEPARTMENT OF THE AIR FORCE - 1880
 WX SITING INVESTIGATION
 SEVEN DESERT, DELTA AREA, UTAH
 OPERATION BASE LOCATIONS
 7-1
 11988

EXPLANATION

-  DESIGNATED TRANSPORTATION NETWORK (DTN)
-  PROPOSED HIGHWAY
-  PROPOSED RAILROAD
-  APPROACH/DEPARTURE CORRIDOR
-  TOPOGRAPHY WITHIN APPROACH/DEPARTURE CORRIDOR GREATER THAN 500' ABOVE RUNWAY SURFACE

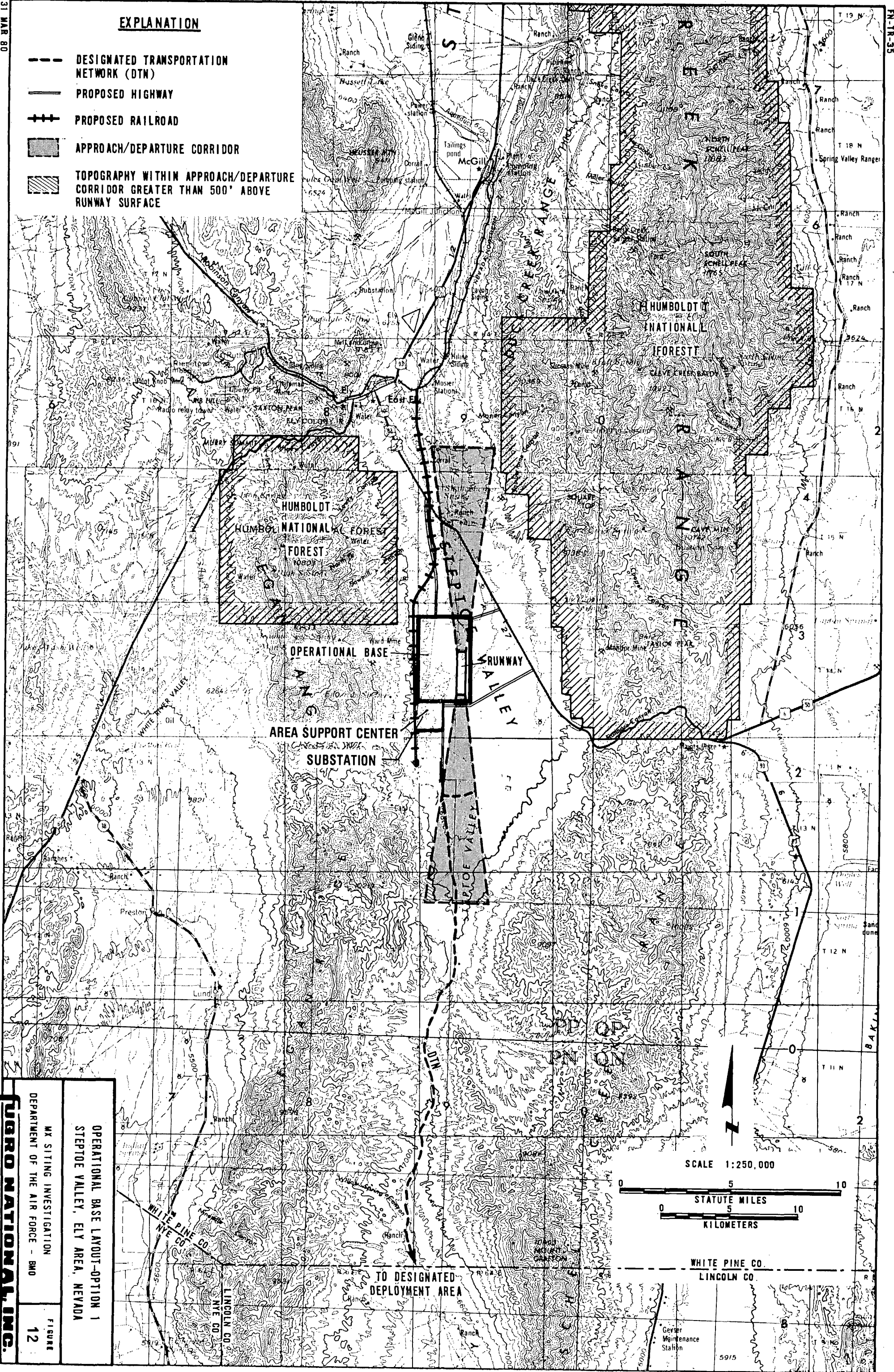


FIGURE 12

MAX SITING INVESTIGATION
DEPARTMENT OF THE AIR FORCE - BMD

OPERATIONAL BASE LAYOUT-OPTION 1
STEPTOE VALLEY, ELY AREA, NEVADA

WUORO NATIONAL, INC.