

**EXECUTIVE OFFICE OF THE PRESIDENT
OFFICE OF MANAGEMENT AND BUDGET
OFFICE OF FEDERAL PROCUREMENT POLICY**

WHAT HAS TO BE DONE?



DEVELOPING A SYSTEM DESIGN CONCEPT

• BASED ON STATEMENT OF NEED (THE FUNCTIONAL SPECIFICATION WITH SUPPORTING GOALS AND OBJECTIVES),

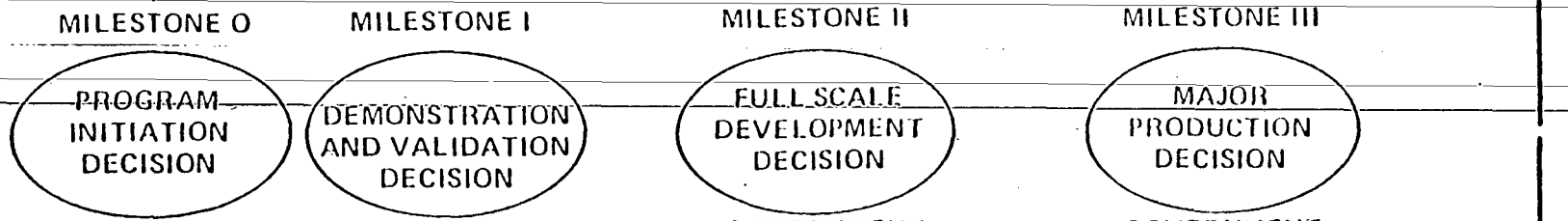
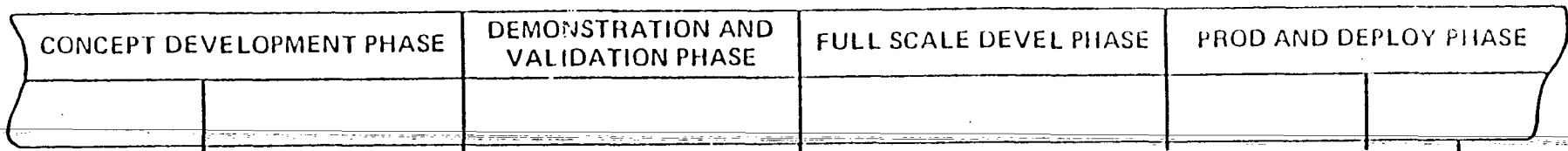
• PERFORM FUNCTIONAL ANALYSIS AND TRADE-OFFS TO DERIVE A SYSTEM SOLUTION (ARCHITECTURE) WHICH CONSIDERS:

- SYSTEM PERFORMANCE
- INHERITED ASSETS
 - FACILITIES, HARDWARE, SOFTWARE
 - CURRENT CAPABILITIES AND DEFICIENCIES
 - COSTS OF OWNERSHIP
 - WORKFORCE SIZE, SKILLS, TURNOVER
- PROGRAMMED IMPROVEMENTS
- CONSTRAINTS
- ENVIRONMENT INCLUDING HUMAN FACTORS
- AVAILABLE AND NEW TECHNOLOGIES
- URGENCY AND PRIORITIES OF SYSTEM AND SUBSYSTEMS
- FLEXIBILITY FOR CHANGE AND GROWTH POTENTIAL
- NEED FOR TRANSITIONING
- PERSONNEL SKILLS, NUMBERS, TRAINING
- COSTS OF ACQUISITION, CONVERSION, TRANSITIONING, AND OWNERSHIP

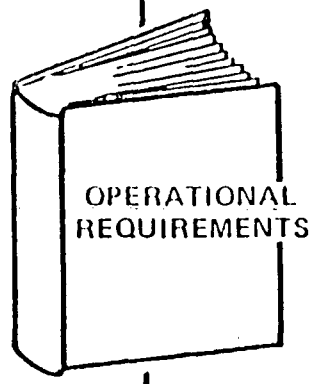
HIEARCHY OF SPECIFICATIONS

- MISSION NEED
 - GOVERNMENT PREPARED AS A RESULT OF MISSION ANALYSIS
- FUNCTIONAL SPECIFICATION
 - GOVERNMENT PREPARED
 - EXPANSION OF MISSION NEED WITH MORE SPECIFIC CONSTRAINTS AND ENVIRONMENT
- SYSTEM SPECIFICATION
 - CONTRACTOR SYSTEM ARCHITECTURE
 - REPRESENTS CONTRACTORS SYSTEM DESIGN CONCEPT
 - HIS UNIQUE SOLUTION
- SYSTEM PERFORMANCE SPECIFICATION
 - CONTRACTOR PREPARED FOR HIS UNIQUE SOLUTION
 - INCLUDES SUBSYSTEM PERFORMANCE SPECIFICATIONS
- DETAIL SPECIFICATIONS
 - CONTRACTOR PREPARED FOR HIS UNIQUE SOLUTION
 - BUILD TO SYSTEM, SUBSYSTEM, ETC. SPECIFICATIONS

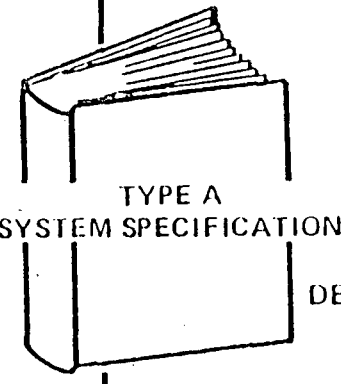
PROGRESSIVE DEFINITION



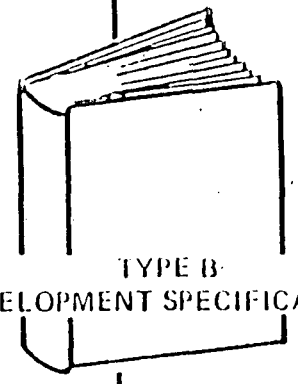
GOVERNMENT REVIEW AND APPROVAL GOVERNMENT REVIEW AND APPROVAL GOVERNMENT REVIEW AND APPROVAL



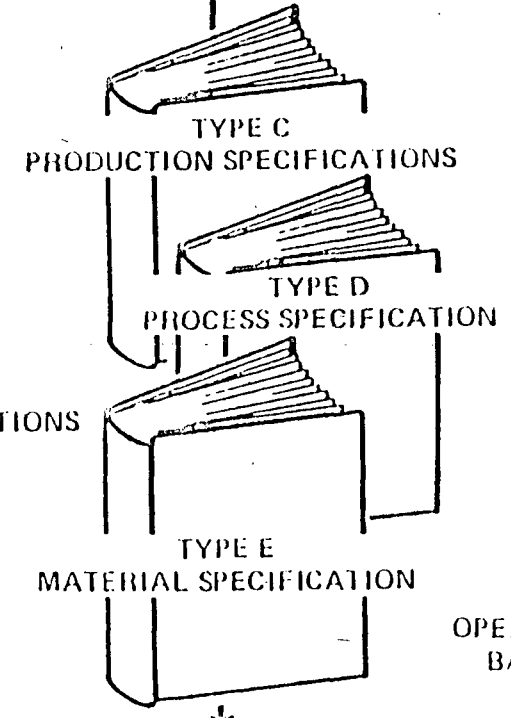
OPERATIONAL REQUIREMENTS BASELINE



FUNCTIONAL (CHARACTERISTICS) BASELINE



ALLOCATED (FUNCTIONS) BASELINE



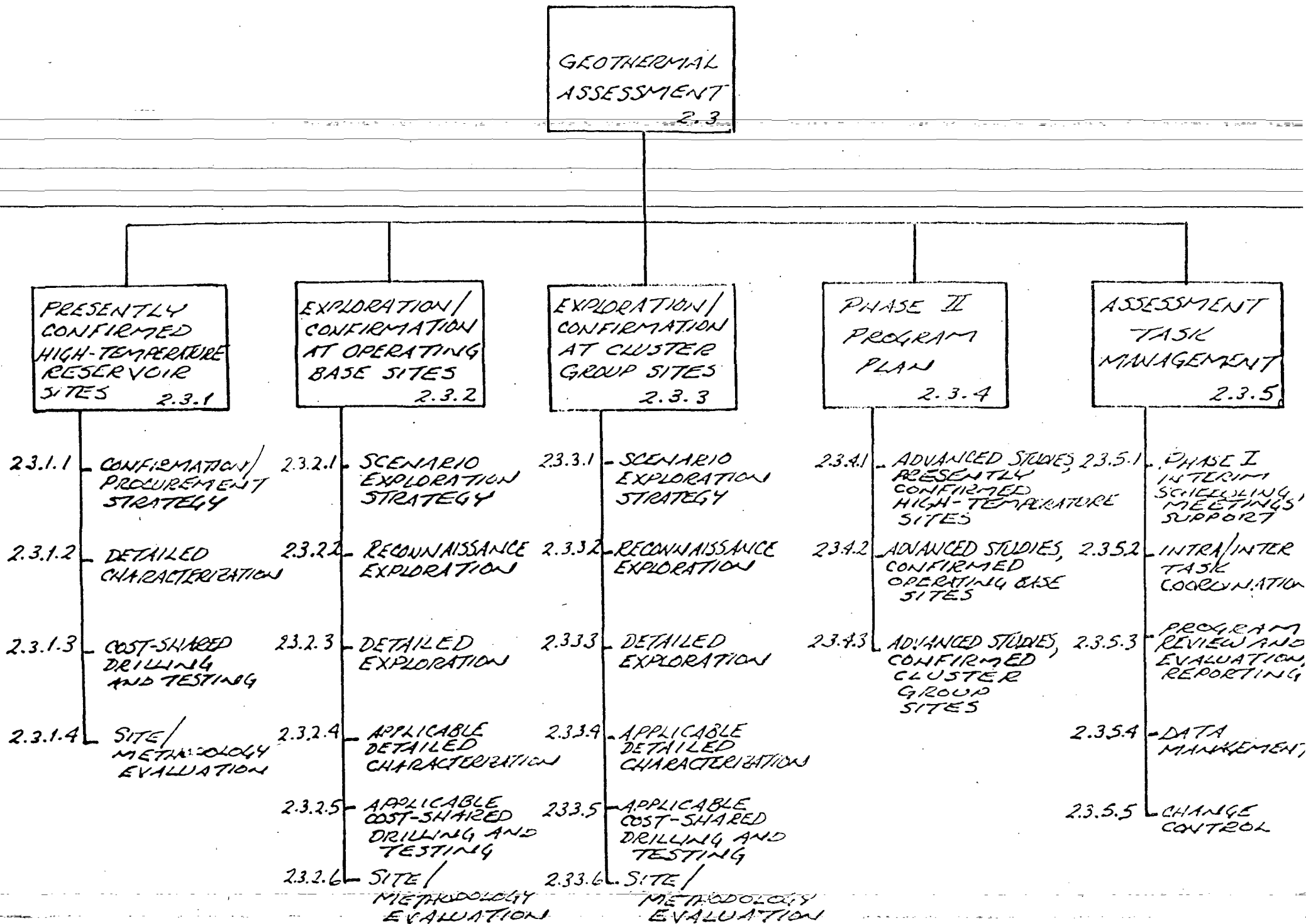
PRODUCT (PRODUCTION) BASELINE

OPERATIONAL BASELINE

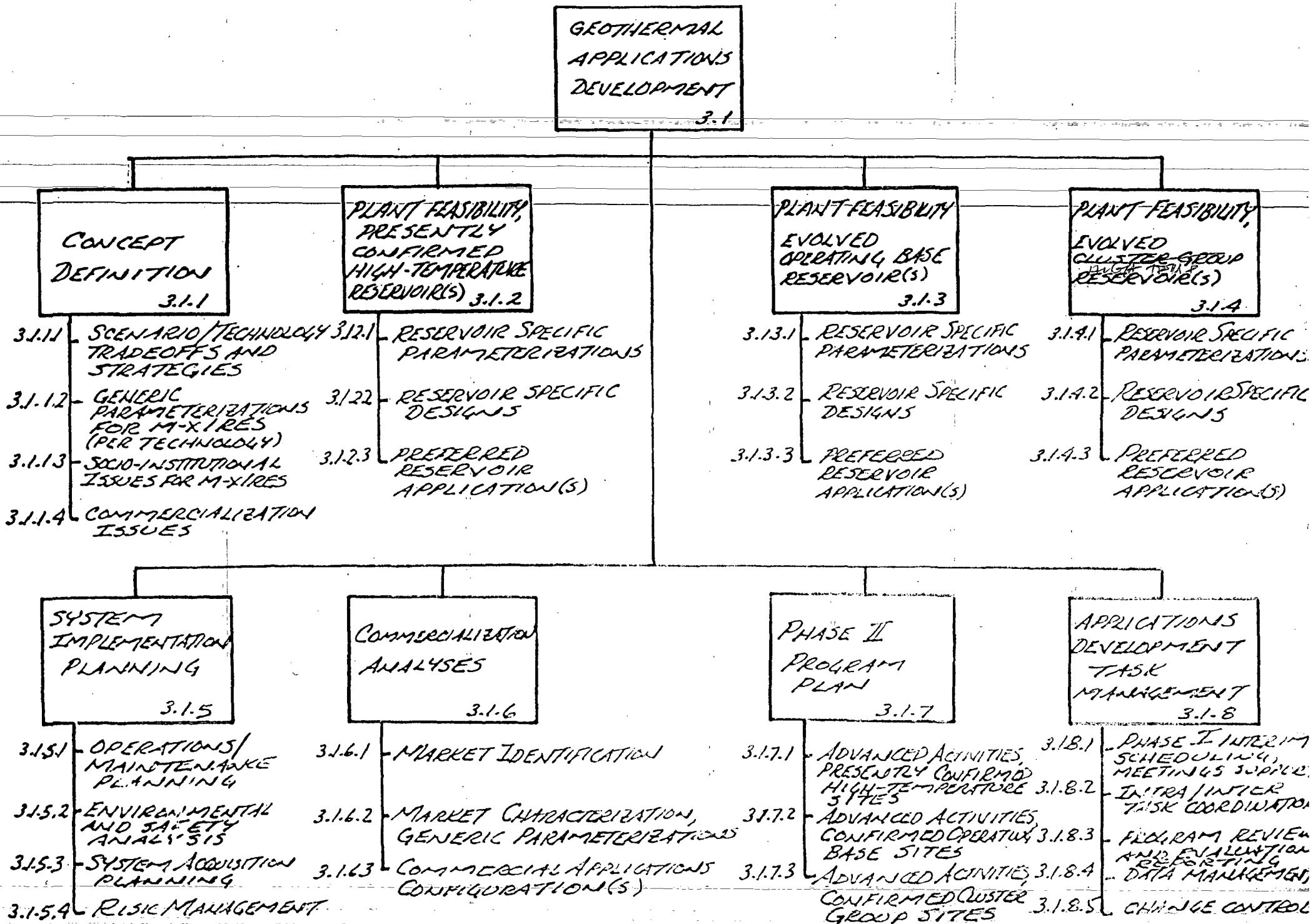
M. XIRES GEOTHERMAL SYSTEM SPECIFICATION (MIL-STD-490A FORMAT)

1. SCOPE
 - 1.1 CLEAR, CONCISE ABSTRACT OF SPECIFICATION COVERAGE
 - 1.2 CLASSIFICATION (E.G., TYPES, GRADES)
2. APPLICABLE DOCUMENTS
 - 2.1 GOVERNMENTAL
 - 2.2 NON-GOVERNMENTAL
 - 2.3 REFERENCES
3. REQUIREMENTS
 - 3.1 DEFINITION (I.E., FUNCTIONAL DESCRIPTIONS/DIAGRAMS)
 - 3.2 CHARACTERISTICS (E.G., PHYSICAL, PERFORMANCE, O&M)
 - 3.3 DESIGN STANDARDS FOR SELECTION/USE (INCL SAFETY, HUMAN ENGINEERING, PERSONNEL/TRAINING, CONSTRUCTION)
 - 3.4 DESIGN DOCUMENTATION
 - 3.5 SUBSYSTEM/SYSTEM INTERFACES
 - 3.6 QUALIFICATION OR VALIDATION
4. QUALITY ASSURANCE PROVISIONS
 - 4.1 GENERAL PHILOSOPHY
 - 4.2 QUALITY CONFORMANCE INSPECTIONS/PROCEDURES
5. PREPARATION FOR SUBSYSTEM/COMPONENT DELIVERIES
 - 5.1 GENERAL APPROACH
 - 5.2 SPECIFIC REQUIREMENTS
6. NOTES (EXPLANATIONS + NON-REQUIREMENT)
7. APPENDICES AND INDEX

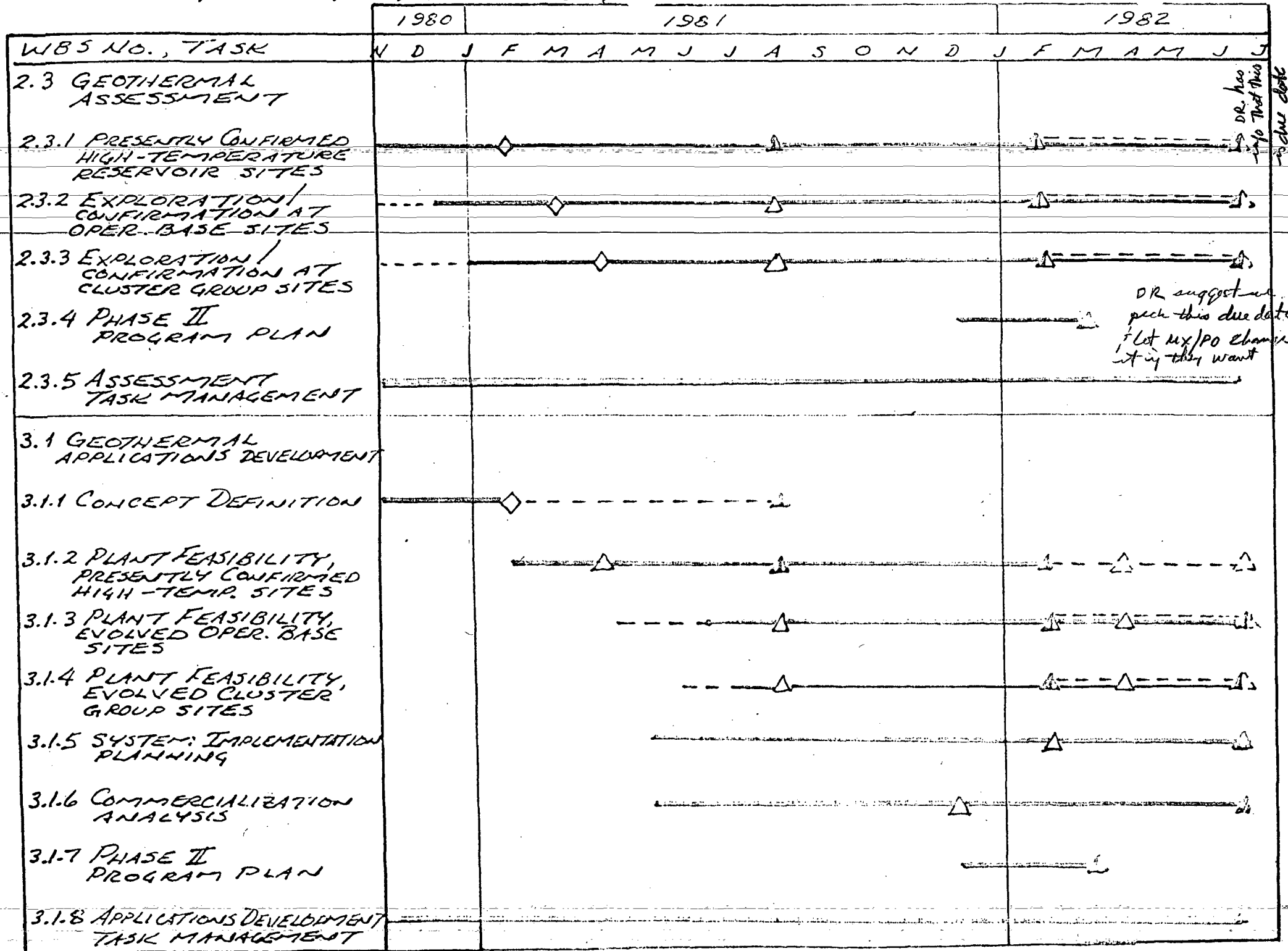
GEO THERMAL ASSESSMENT WORK BREAKDOWN STRUCTURE



GEOHERMAL APPLICATIONS DEVELOPMENT - WORK BREAKDOWN STRUCTURE



7-X/RES GEOTHERMAL 7.5K SCHEDULE (PHASE I)



DR suggest
pech this due date
let us/PO change
it if they want

DR has
to put this
due date

M IRES GEOTHERMAL ASSESSMENT TASK SCHEDULE (PART I)

