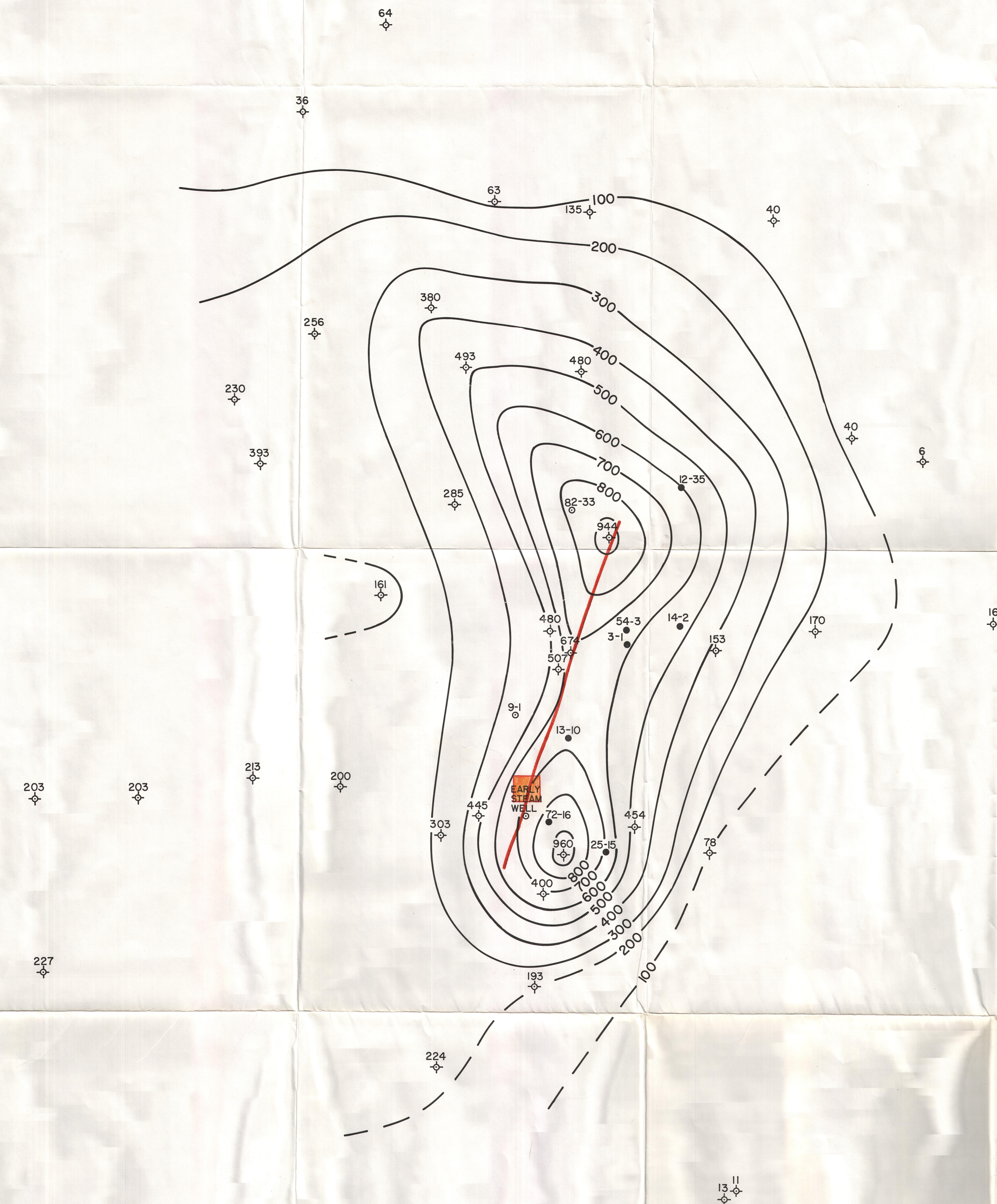


— 38°37'
113°00'

38° 37' —
112° 45'

— 38°30'
113°00'

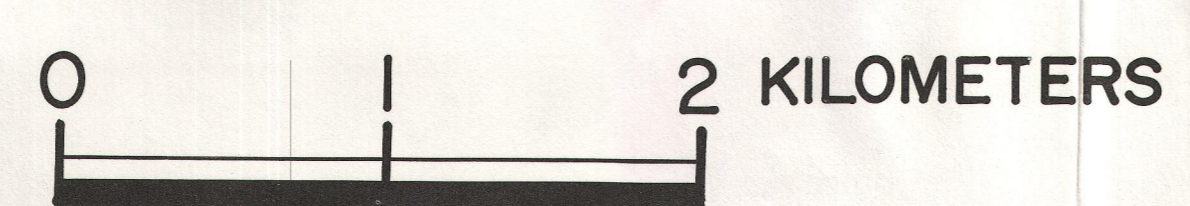
38°30' —
112°45'



EXPLANATION

- ⊕ THERMAL GRADIENT WELL
- WELL, PRODUCTIVE
- WELL, NON-PRODUCTIVE

SCALE 1:24000



ROOSEVELT HOT SPRINGS KGRA
THERMAL GRADIENT CONTOUR MAP
GRADIENTS FROM 30-60 METERS
CONTOUR INTERVAL 100°C/KM

Figure 1

620130.DOC