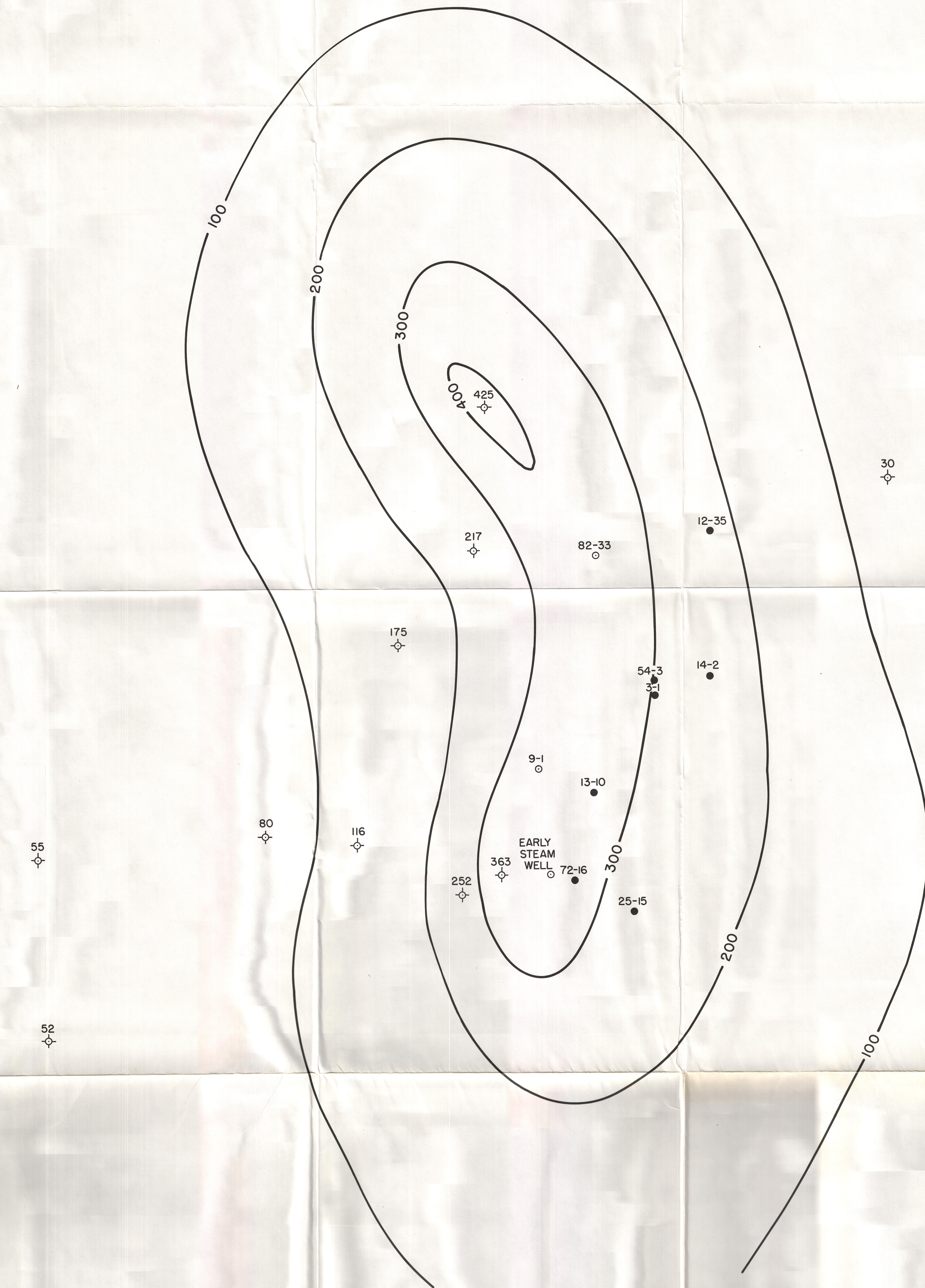


38° 37' N
113° 00' W

30° 37' N
112° 45' W

38° 30' N
113° 30' W

38° 30' N
112° 45' W



EXPLANATION

- ◇ THERMAL GRADIENT WELL
- WELL, PRODUCTIVE
- WELL, NON-PRODUCTIVE

SCALE 1:24000
0 1 2 KILOMETERS



ROOSEVELT HOT SPRINGS KGRA
THERMAL GRADIENT CONTOUR MAP
GRADIENTS FROM > 100 METERS
CONTOUR INTERVAL 100° C/KM

Figure 3