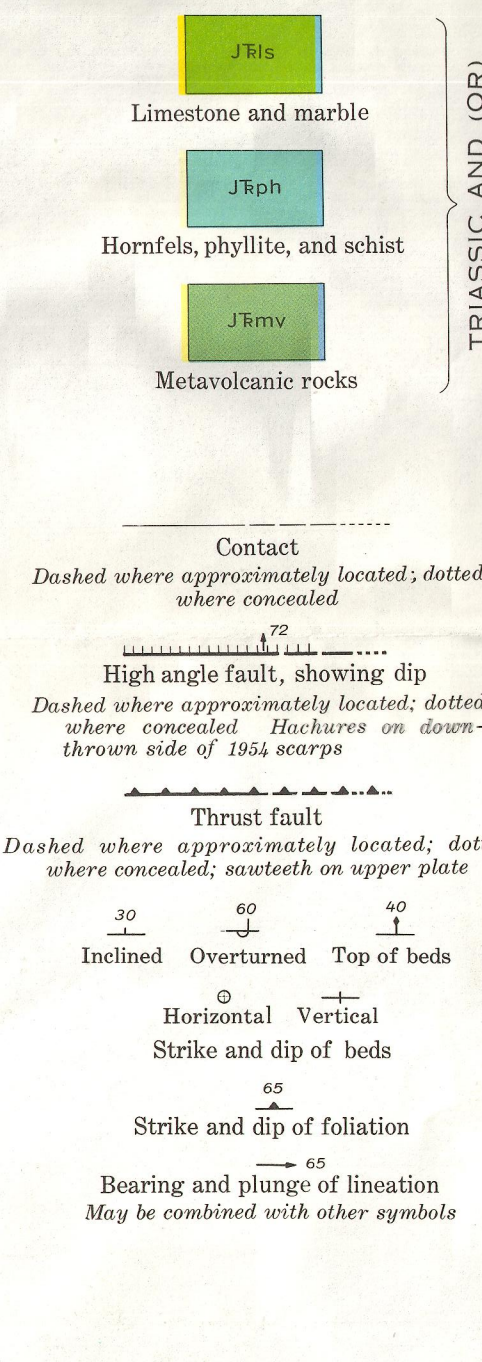
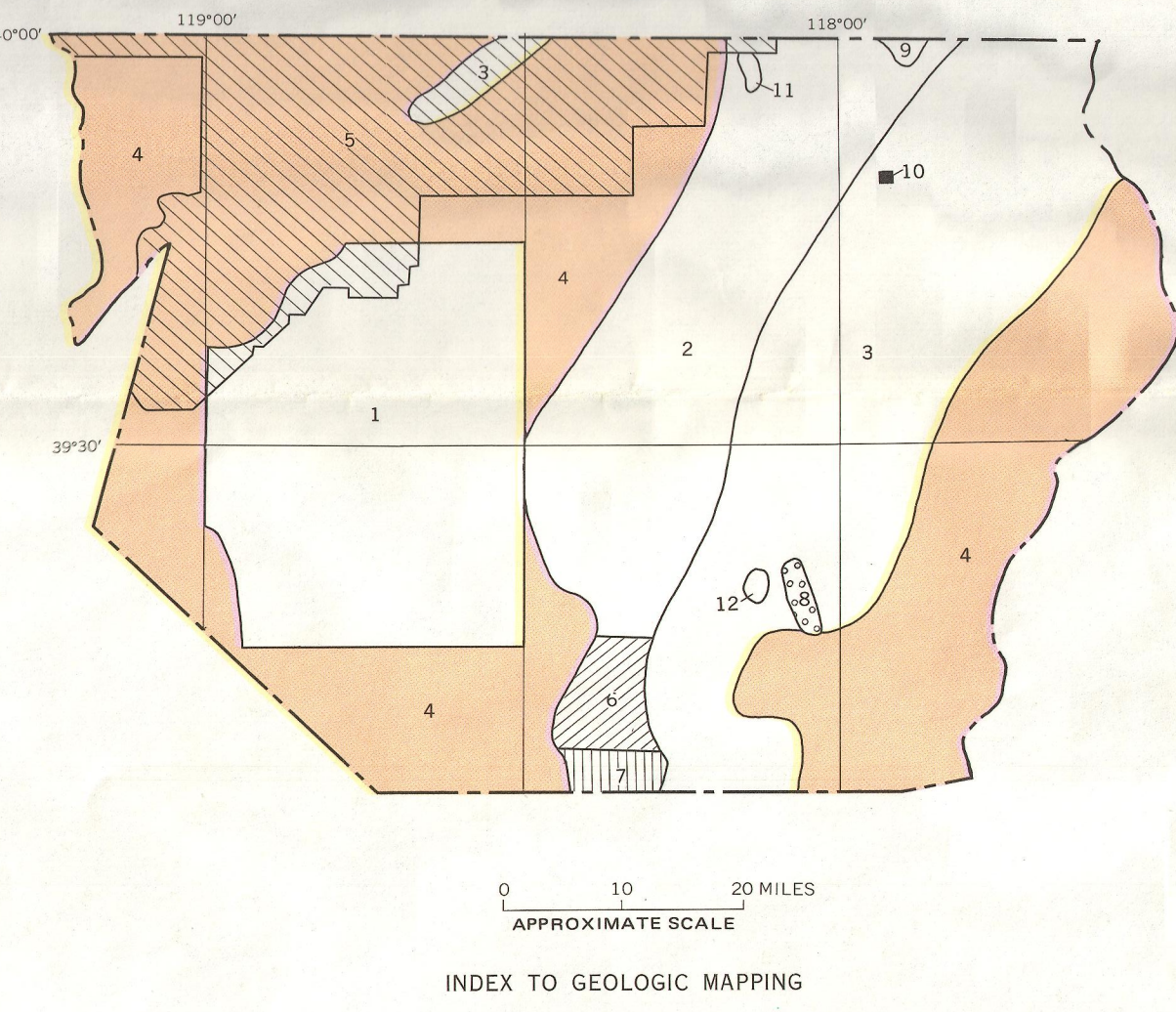
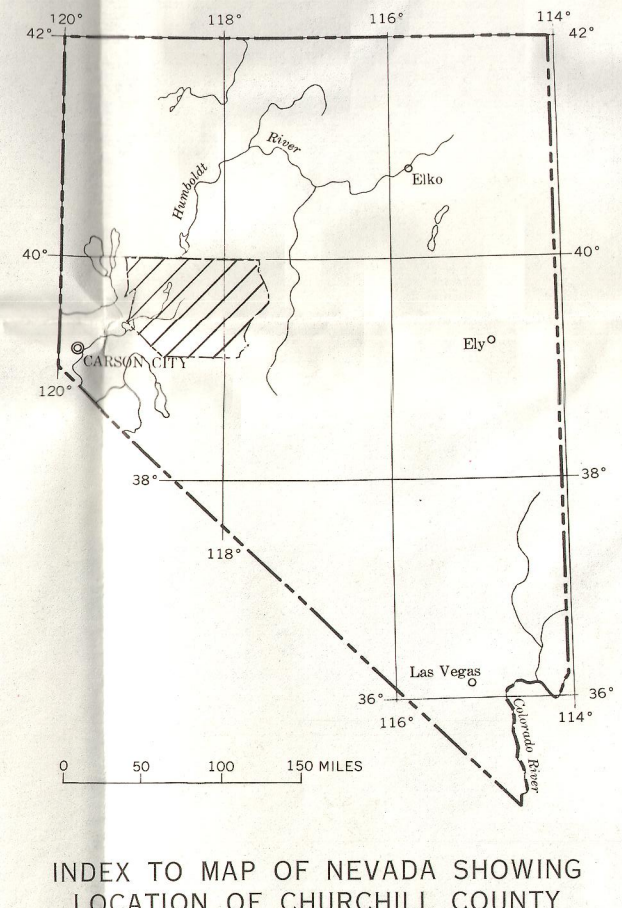


CHIEFLY IN NORTHWEST PART OF COUNTY BUT ALSO IN DESATOYA RANGE AND IN SOUTHWEST PART

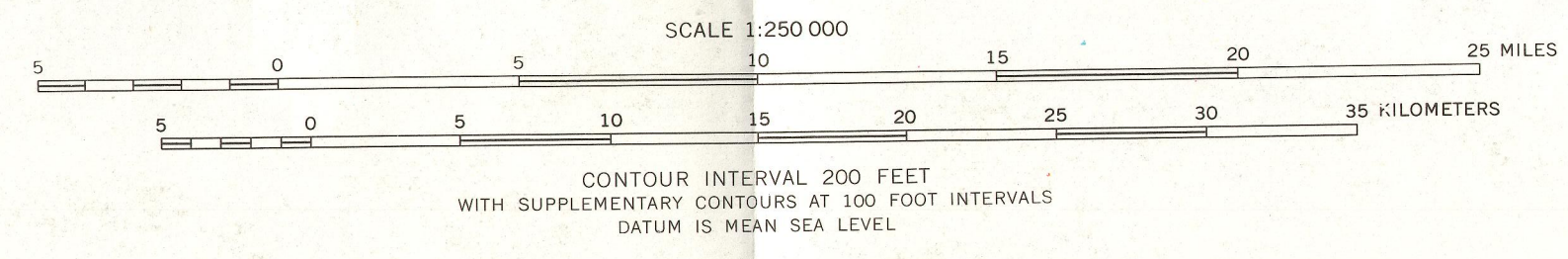


- MAP CREDITS**  
(Numbers correspond to those found on index map)
- Merriman, R. B., 1964, Lake Lahontan geology of southern Carson Desert, Nevada: U.S. Geological Survey Prof. Paper 401
  - Pape, B. M., 1965, Preliminary geologic map of a part of the Stillwater Range, Churchill County, Nevada: Nevada Bur. Mines Map 28. Modified by R. C. Speed.
  - R. C. Speed, this report
  - Ronald Willden, this report
- Area covered by Southern Pacific Company geologic maps extensively remapped by Ronald Willden
- Nevada Bureau of Mines, 1964, Final report geological, geophysical, chemical, and hydrological investigations of the Sand Springs Range, Fairview Valley, and Fourmile Flat, Churchill County, Nevada, for Shell Event, project Shovel, Yala Uniform Program, Atomic Energy Commission: Univ. Nevada, Reno, Nevada
- Banaszak, K., 1968, Structural analysis of metamorphic rocks in the southern Sand Springs Range, Churchill and Mineral Counties, Nevada: M. S. thesis, Northwestern Univ.
- Covolan, J. I., 1962, Early Mesozoic biostratigraphy of the Westgate area, Churchill County, Nevada: Ph. D. thesis, Stanford Univ.
- Filke, A. L., 1968, Geology of the Cottonwood Canyon area near Nikol, Stillwater Range, Nevada: M. S. thesis, Univ. of Calif., Los Angeles
- Jones, T. A., 1968, A study of Jurassic quartz arenite near Shoehorn Springs Clin Alpine Range, Nevada: M. S. thesis, Northwestern Univ.
- Nickle, N. L., 1962, Geology of the southern part of the Biota Vista Hills, Churchill County, Nevada: M. S. thesis, Univ. of Calif., Los Angeles
- Thompson, D. C., 1968, Geology of Chalk Mountain, Churchill County, Nevada: Unpub. report, Northwestern Univ.



**GEOLOGIC MAP OF CHURCHILL COUNTY, NEVADA**

By  
**Ronald Willden and Robert C. Speed**



Base from U.S. Geological Survey 1:250,000; Lovelock, 1955; Reno, 1960; Winnemucca, and Millett, 1962; Roads modified, 1971; Revised, 1971.