

92.0157FD 406 C

COUNTY BEAVER FIELD WILDCAT LOCATION UTAH STATE NO. 72-16 WELL		COMPANY THERMAL POWER COMPANY WELL UTAH STATE NO. 72-16 FIELD WILDCAT COUNTY BEAVER STATE UTAH	
Permanent Datum: Elev. M.A. 21.7', Above Farm Datum Drilling Measured from: 18'		Other Services: Elev. K8 NA Elev. D.F. NA Elev. G.L. NA	

Run No. 11-4-76	Date 11-4-76	Type Drill Fluid FSI	ESU 11-4-76
Depth - Logger 534	Depth - Dipper 534	Max. Sec. Temp. 332	ESU 11-4-76
Open Hole Interval 000	Equip. Location WILDCAT	ESU 11-4-76	ESU 11-4-76
Open Hole Size 8 3/8	Recorded by WILDCAT	ESU 11-4-76	ESU 11-4-76
CASING REC. 8 3/8	Witnessed at WILDCAT	ESU 11-4-76	ESU 11-4-76
Prod. String 8 3/8	Grade 54.5	ESU 11-4-76	ESU 11-4-76
Prod. String 8 3/8	Grade 54.5	ESU 11-4-76	ESU 11-4-76

The well name, location and borehole reference data were furnished by the customer.

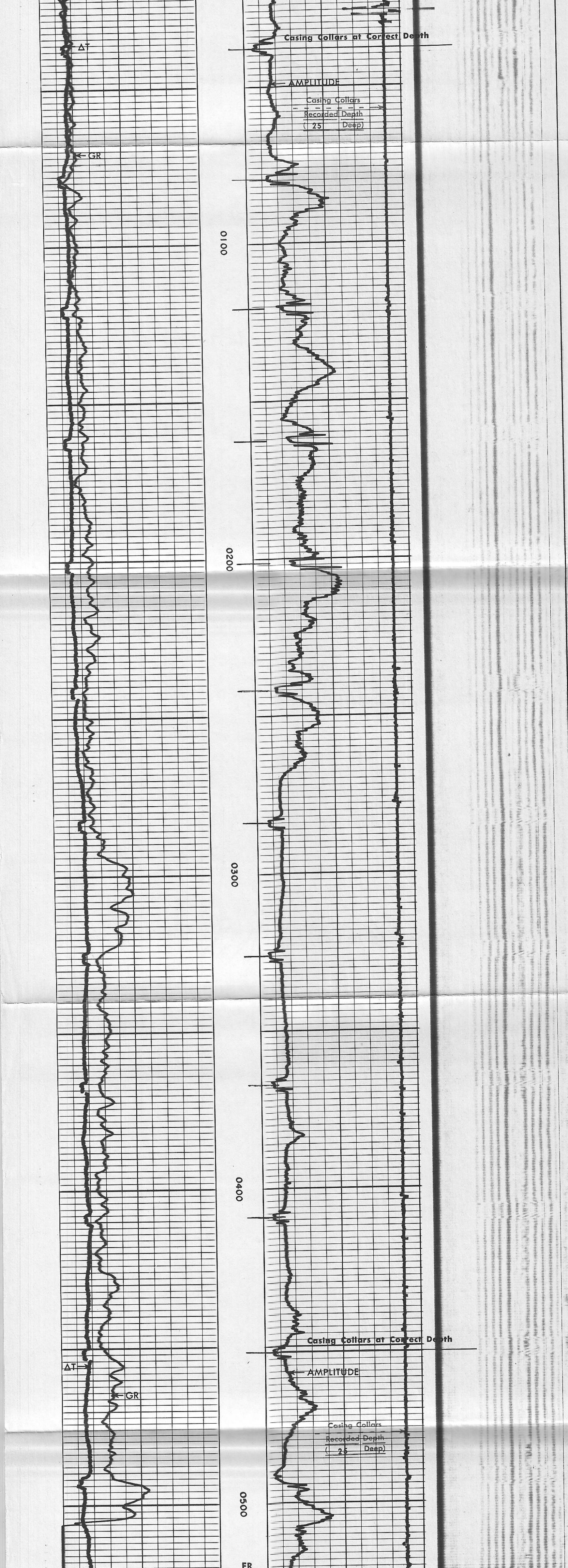
Schlumberger

CEMENT BOND LOG

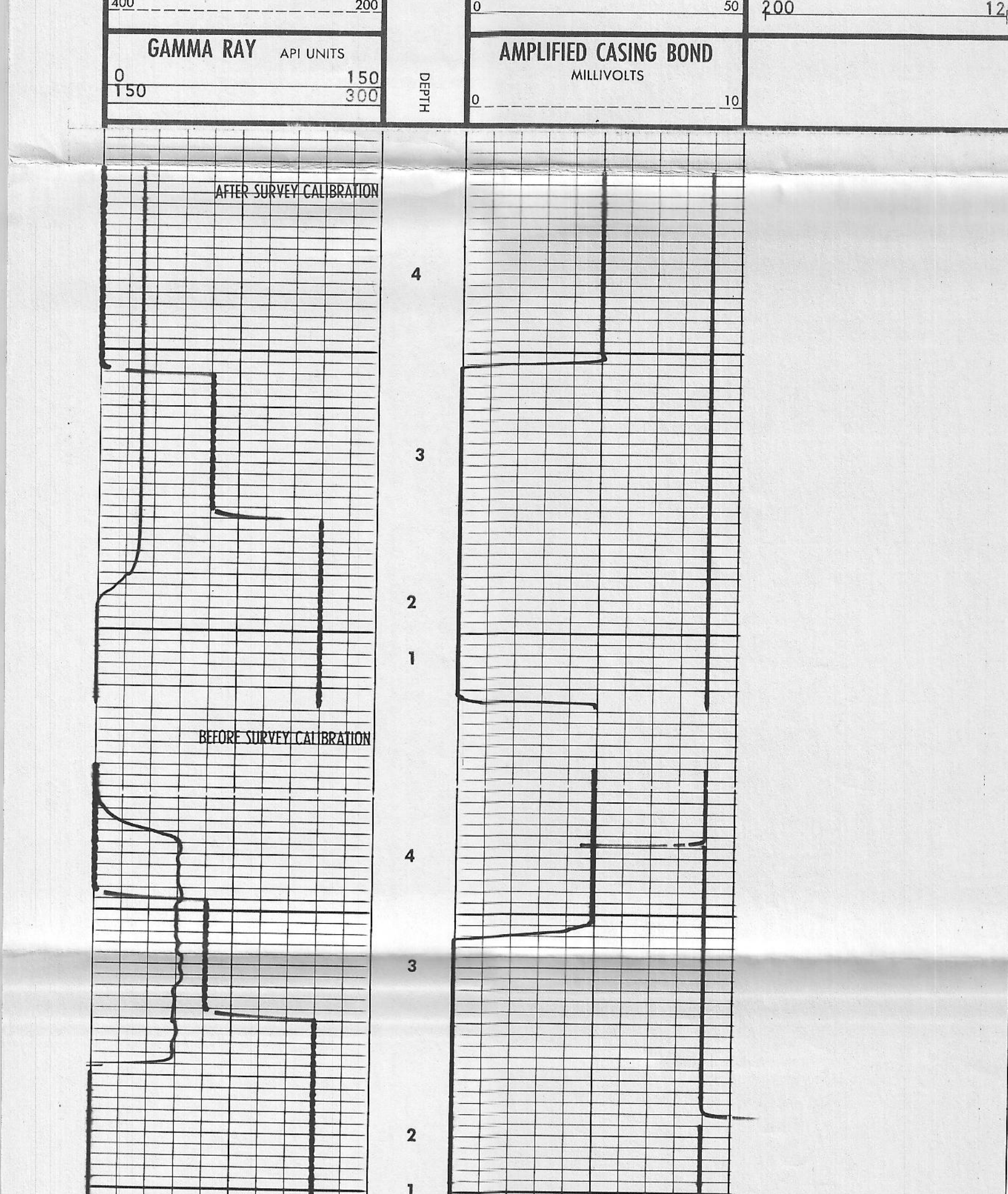
VOL. 5R

PRIMARY CEMENTING PROCEDURE		REMARKS	
Hour - date	Hours from start of operation	Service Order No. 52223	Csg. Collars Recorded 25 ft.
Started pumping cement	11-5	0700	11-5
Start Cement Band Log	11-5	0800	11-5
Finish Cement Band Log			
Preceding fluid	Volume --- bbls.	Pipe reciprocated during Pumping: Yes ___ No ___	
Cement pumped	--- bbls./minute	Pipe reciprocated after plug down: Yes ___ No ___	

SQUEEZE JOB DETAIL		EQUIPMENT DATA		Centralizer Depths	Scratcher Depths
Squeeze number	1	Sonic Panel No.	302		
Date		Sonic Cart No.	145		
Depth interval		Sonic Sonde No.	155		
Type cement		CRP No.	50		
Volume of cement		Mem Panel No.	588-276		
Additive		GR Panel No.	38		
Retarder		GR Cart No.	577		
Weight of slurry		Centralizer Type	CH-100		
Preceding fluid		No.	4		
Breakdown pressure		To Level (MV)			
Max. pressure-stage 1		Cart. Gain	1/20		
" " 2		CRP Intensity	10		
" " 3		R9G Intensity	8		
Final maximum pressure		Logging Speed	3600		
Started pumping cement		Time Constant	2		
Released pressure					
Start CBL					
Finish CBL					
AVERAGE WELL DRIFT:					
° from	to	° from	to		



TRANSIT TIME MICROSECONDS 3' SPACING 400	CASING BOND MILLIVOLTS 50	VARIABLE DENSITY MICROSECONDS 5' SPACING 200
GAMMA RAY API UNITS 150	AMPLIFIED CASING BOND MILLIVOLTS 10	



CEMENT BOND CALIBRATION CODING		
1. MECHANICAL ZERO	AMPLITUDE	
2. 240 sec	ELECTRICAL ZERO	
3. 320 sec	CALIBRATE	
4. 400 sec		

COMPANY THERMAL POWER COMPANY	SCHL. FR 522
WELL UTAH STATE NO. 72-16	SCHL. TD 534
FIELD WILDCAT	DRLR TD 505
COUNTY BEAVER	Elev. KB NA
STATE UTAH	GL NA