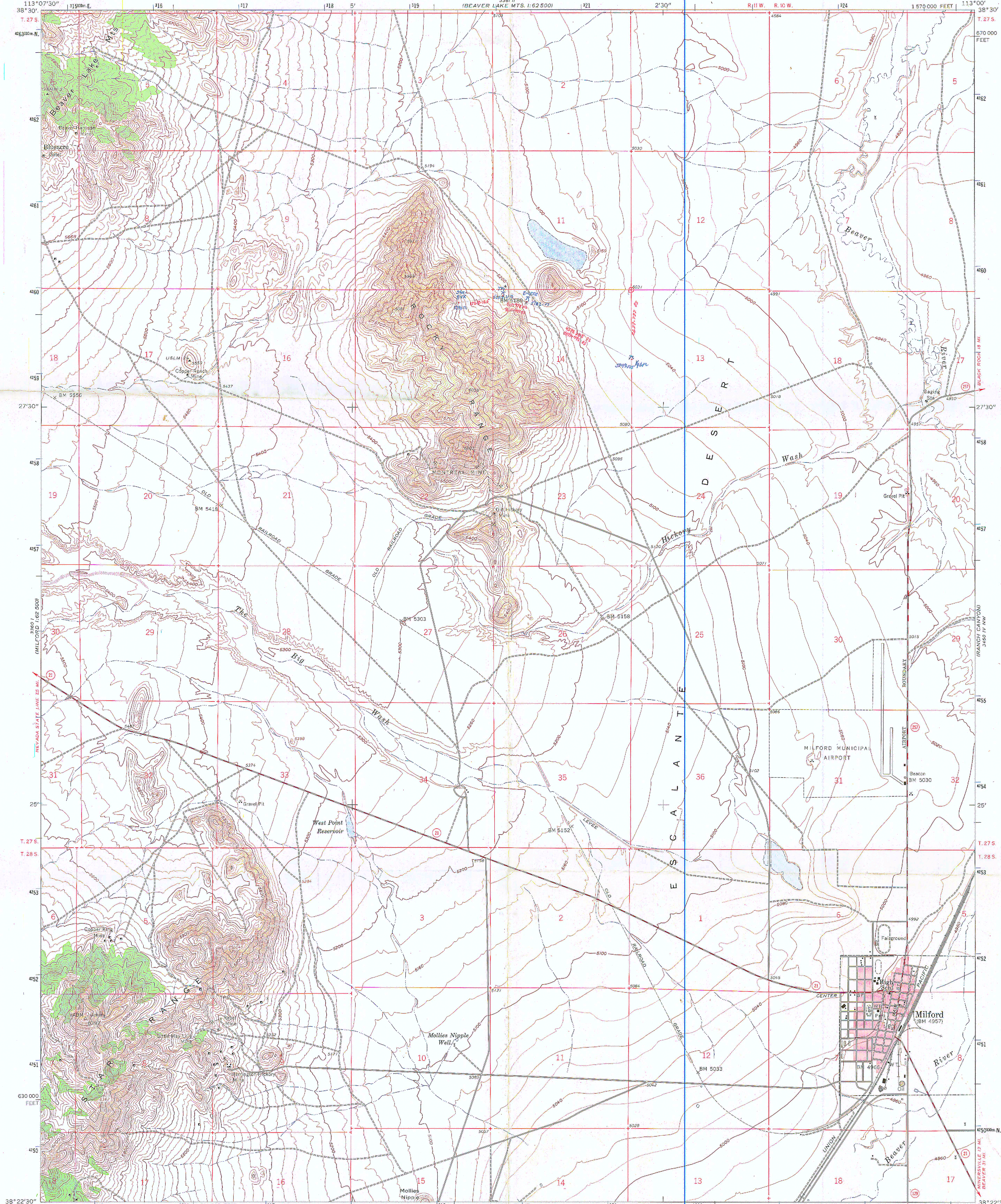
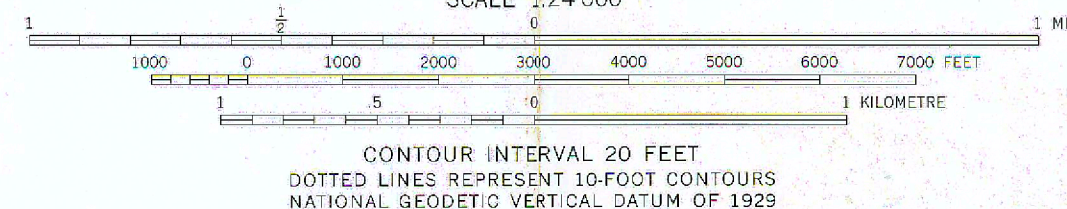
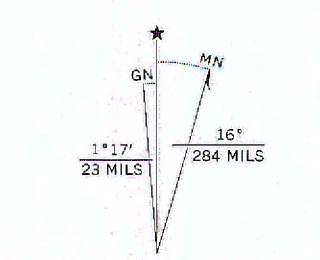


G101617-0005

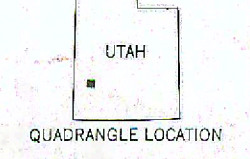
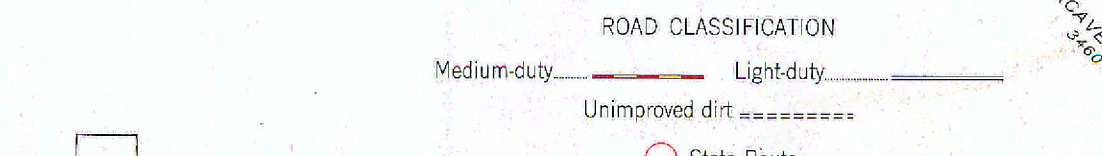


Mapped, edited, and published by the Geological Survey

Control by USGS and USC&GS
Topography from aerial photographs by photogrammetric methods
Aerial photographs taken 1951, 1953 and 1955. Field check 1958
Polyconic projection, 1927 North American datum
10,000-foot grid based on Utah coordinate system, south zone
3000-metre Universal Transverse Mercator grid ticks,
zone 12, shown in blue
Red tint indicates area in which only landmark buildings are shown



CONTOUR INTERVAL 20 FEET
DOTTED LINES REPRESENT 10-FOOT CONTOURS
NATIONAL GEODETIC VERTICAL DATUM OF 1929



MILFORD, UTAH
NE 4 MILFORD 1° QUADRANGLE
N3822.5—W11300/7.5

UNIVERSITY OF UTAH
RESEARCH INSTITUTE
EARTH SCIENCE LAB.

THIS MAP COMPLETES WITH NATIONAL MAP ACCURACY STANDARDS
FOR SALE BY U.S. GEOLOGICAL SURVEY, DENVER, COLORADO 80225, OR RESTON, VIRGINIA 22092
A FOLDER DESCRIBING TOPOGRAPHIC MAPS AND SYMBOLS IS AVAILABLE ON REQUEST

1958
AMS 3350 I NE—SERIES Y897