

3/4

turn
clearance

710 → 4600

760 → 4660

770 → 4660

add 3900

775 → ~~4675~~ → 4650

870

835 →

→ 4750

4700

3850

1390

~~3900~~

3850

5300

5250

3/4

TL 105

2291 - 2296 = 2.3" = 4600 ft

35° to lines cos 35 = .82

depth below plane 3700 feet

~~2290~~ 2289.5 - 2288.5 = 766 feet
to lines = 750 feet

2293 - 2295 = 1600 feet
cos 35 = .82

→ 1300 feet

2300 - 2302 = 1550 feet
cos 25 → 1450 feet

2306 - 2307 = 750 feet

2309 - 2309.5 = 375 feet ✓

3/5

TL 106

2332.5 - 2333.5 = 770'
2338.5 - 2340.5 = 1540

26° + 340
→ 1540

2358.5 - 2360 = 1260

2354.5 - 2357

→ 1200

X

104

2234 - 2239.5 5200

51 2213-4 700'
2214.5-5.5 700'
—
2221-2.5 1350
2224-5.5 1350'

52 2174-5.5 1350
2175.5-2177 1350

2163.5-5.5 2000
2167-2169.5 2300

2155.5-2157.5 1750'

2181-2179 1600

64 2128.5/30+ 1.5 1600
2131- / 2132+ 1.5 1100
2133 / 2134.5 1.5 1600

53 2083/8 4100
2100/2.5 2200
2103.5/5.5 1700

5/6/80

65	2055.5/6.5-	2.45/5 → 0.49 → 980 ft	1000
	2057.0/8.0+		1200
	2058.0+/ 2059.0-		800
	2059.0/ 60.0+	2.60/6 → .43 → 870 ft ^{60° 900 1.7}	1500
	20.63.5/2065.5		1750

add 50,000 g to values on map

15.0 E declination

66.5 inclina

54500 Total

$$k = \frac{\Delta T_m}{\Delta T_c T}$$

T = entire total field

T_m = measured anomaly

T_c = compiled

$$T = 54550$$

but for this one

$$T = 54700$$

$$\frac{100}{35 \times 54700}$$

$$\frac{100}{200000}$$

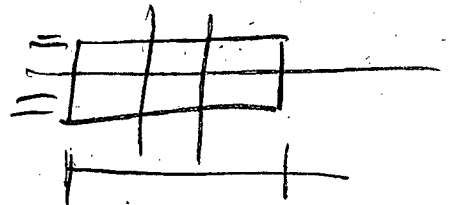
$$2000 \left(\frac{.000500}{.000000} \right)$$

1500' down

2000' x 3000'

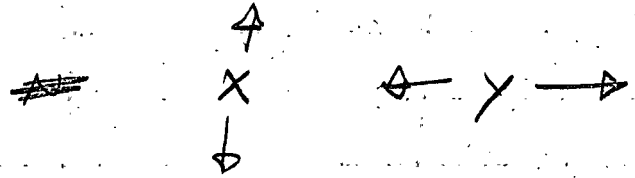
1000' down

1250' x 1250'



Purwanes :

X is north



$$\phi = \text{Koenigsburg} = \frac{\text{Rem. mag.}}{k \quad T}$$

54 2038.5 - / 39 + ~1 800'
 36 - / 38 - 1600'

66 (2001.5 / 1998) 3200
 (1985 / 1995) 8.5 ~~9000~~ 2400
 1990 / 91

cos rectin

55 1960-62 plane goes down, anomaly is negative
 BFD

68 1826.5 / 28 1600

57 1803-05

GLO1535

Asarco hit bedrock 370 ft andesite
porphyry

Lee hit bedrock 722 ft

29% magnetite in rock

~~Knutz~~ energy services 208 529 3064
~~Roger Stoker~~

R+R energies - Low Fort

- Uddy H.S. said no

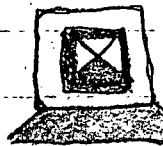
Plymouth, Uddy - subdivision
- steel plant

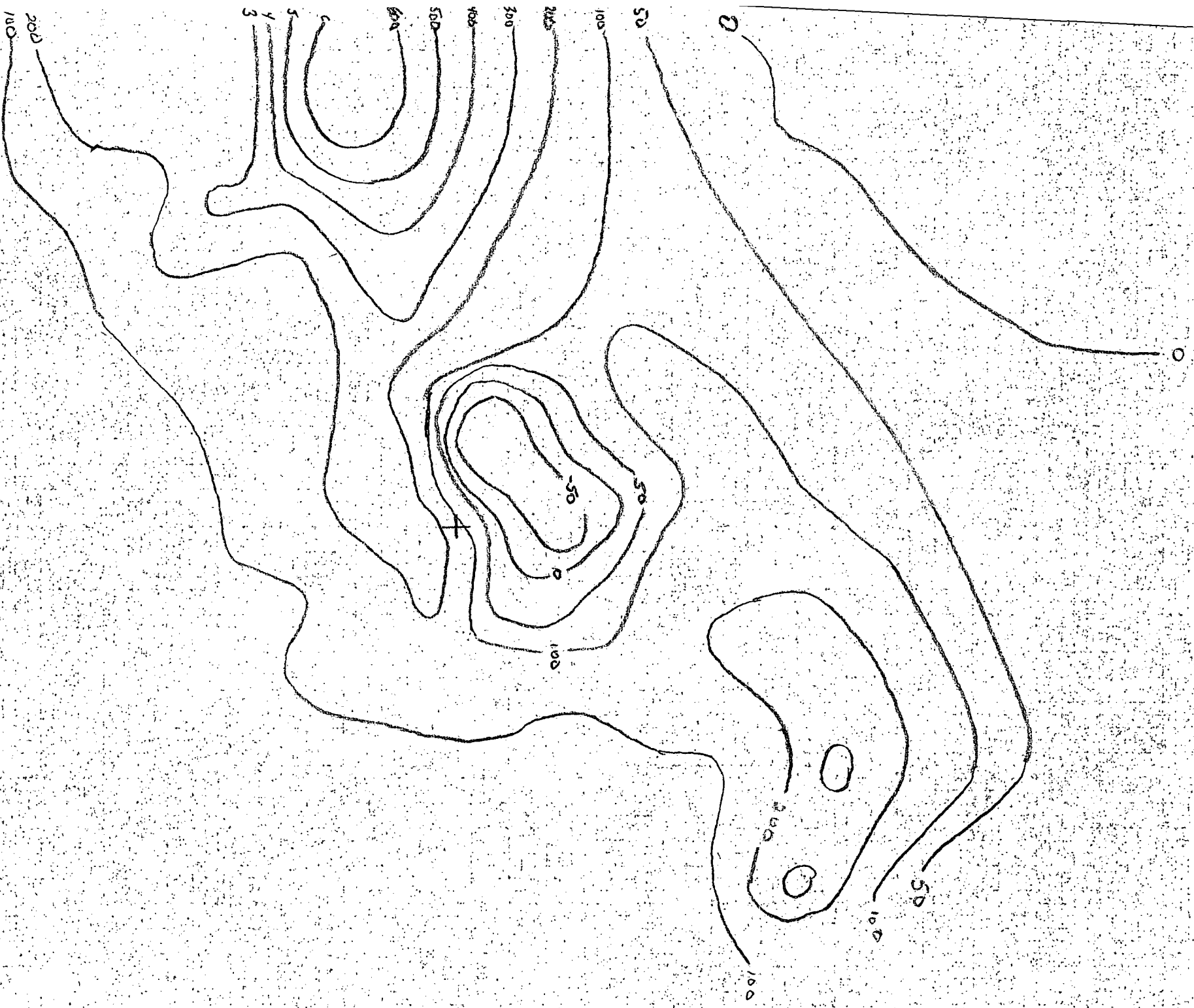
Highway 191

1 mi S. of Plymouth in Mad River

Roger Harrison leaving Terra Tek for San Francisco
for GPE

complete Bouguer due 3.15.80
only sample now







at 2500 - 8000

81

17

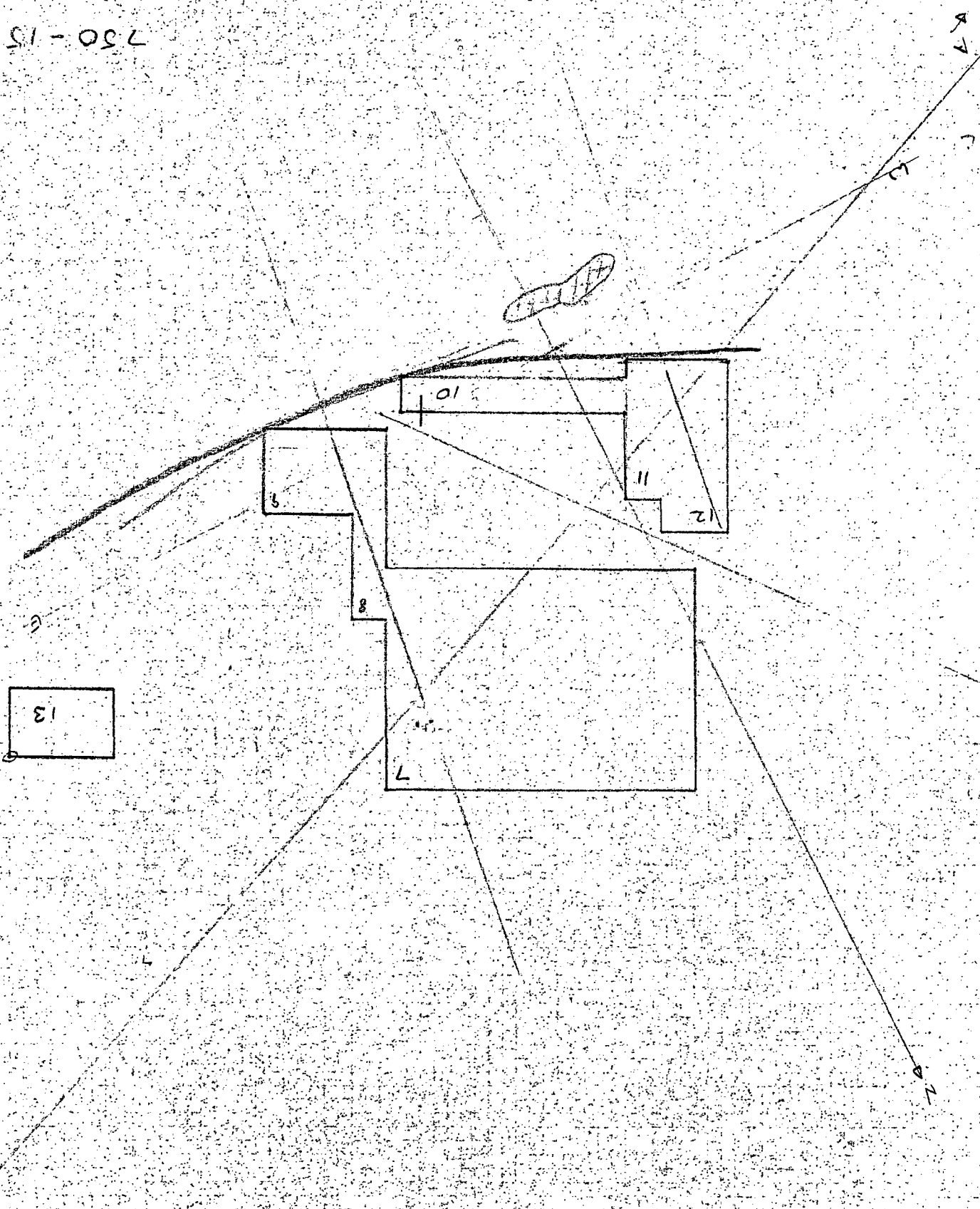
2

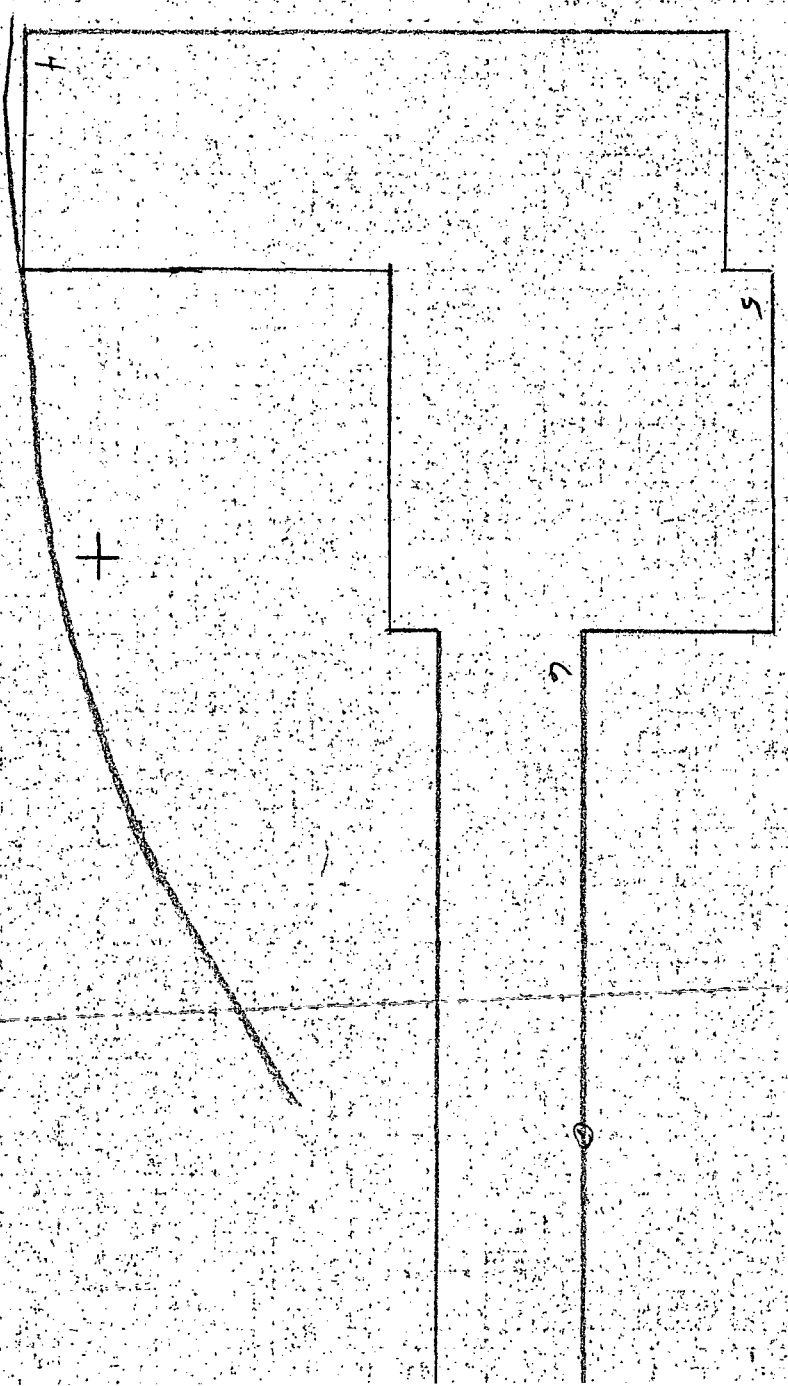
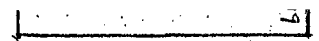
3



N 66° W 8.5' = N 38.5' W
N 135° W 8.5' = N 8° E

750-1500





1500-2500