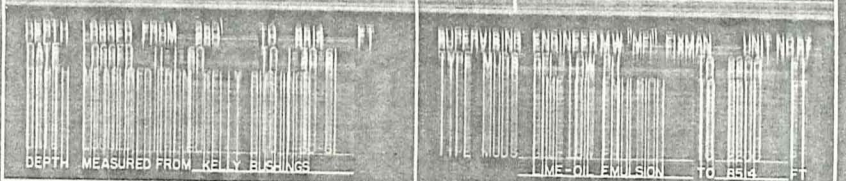


GLD1519A-1009

# BAROID WELL LOGGING SERVICE

WELL: H.M. BYLESBY NO. 2  
 COMPANY: H.M. BYLESBY & CO.  
 FIELD: WILDGAY  
 COUNTY: UTAH STATE: UTAH

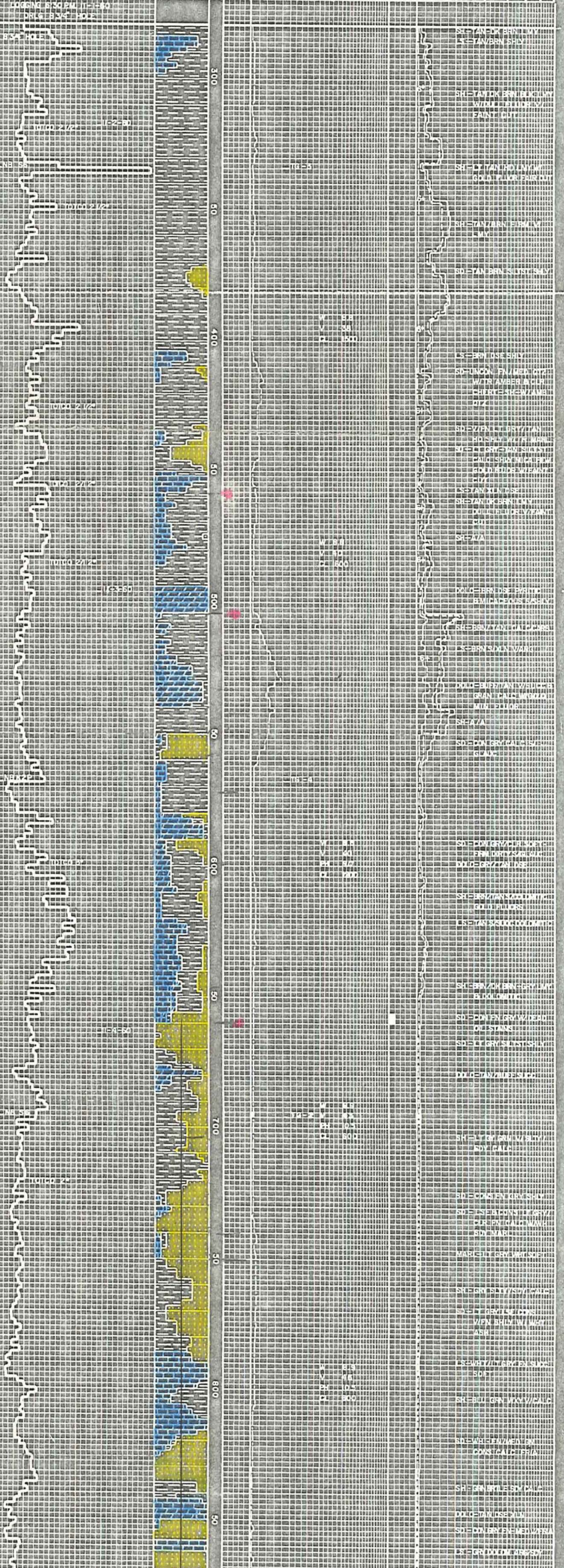


### LEGEND

ABBREVIATIONS		MUD CHARACTERISTICS		LITHOLOGY	
NB	NEW BIT	W	WEIGHT, LBS/GAL - LBS/CU FT	SAND	LIMESTONE
NCB	NEW CORE BIT	V	VISCOSITY, API, SECONDS	SHALE	OLIGITIC LIMESTONE
CO	CIRCULATED OUT	F	FILTRATE, API, CC'S	CLAY	DOLOMITE
DST	DRILL STEM TEST	CK	FILTER CAKE	CHERT	GYPSUM, ANHYDRITE
LAT	LOGGED AFTER TRIP	SC	SALINITY, PPM CL - GPG CL	SALT	COAL OR LIGNITE
TG	TRIP GAS	Rm	MUD-RESISTIVITY, OHM-METER	SILTSTONE	GRANITE WASH
NR	NO RETURNS	Rmc	MUD-CAKE RESISTIVITY, OHM-METER	CONGLOMERATE	
DS	DIRECTIONAL SURVEY	Rmi	MUD-FILTRATE RESISTIVITY, OHM-METER		
DC	DEPTH CORRECTION				
ILAT	INTERVAL LOGGED AFTER TRIP				

DRILLING RATE		OIL & GAS ANALYSIS	
FT PER HR	MIN PER FT	METHANE (BY DIFFERENCE)	METHANE (DIRECT)
		LIQUID HYDROCARBONS (C <sub>6</sub> +) 6+	TOTAL GAS
5	10	25	50
15	20	75	100
25		125	

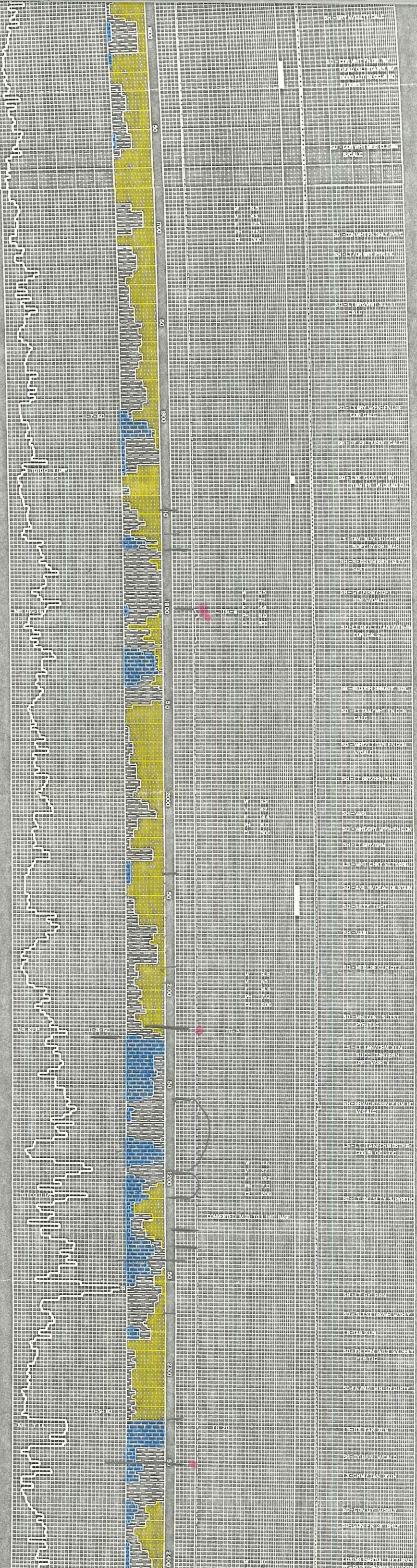
GREEN RIVER



APR 1 1963

See 5, 135-20E  
UINPAH Co.

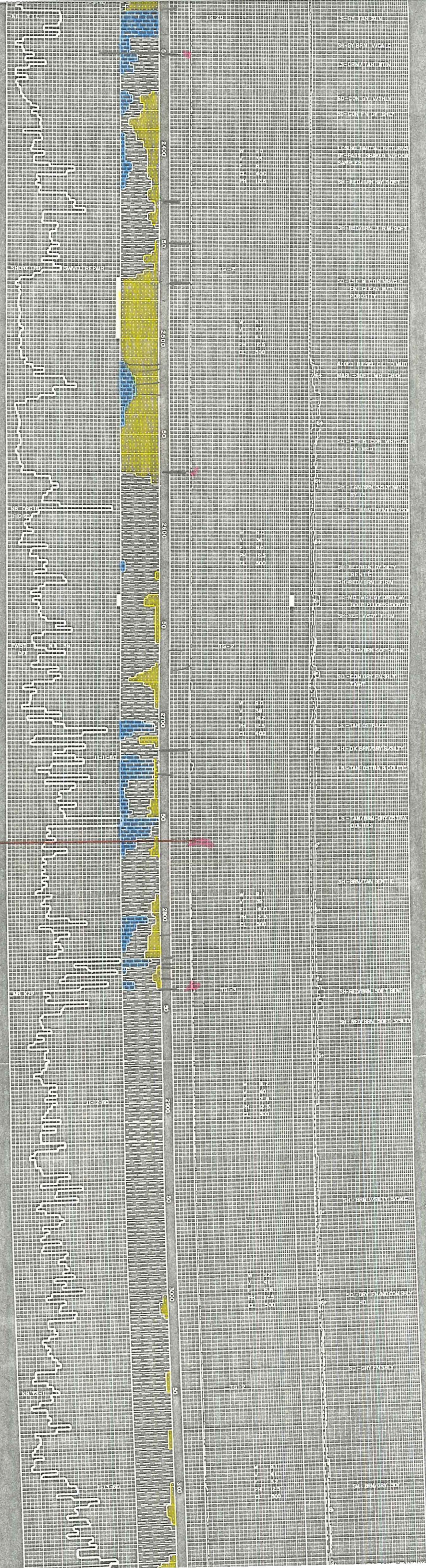




GREEN RIVER

2762

WASATCH



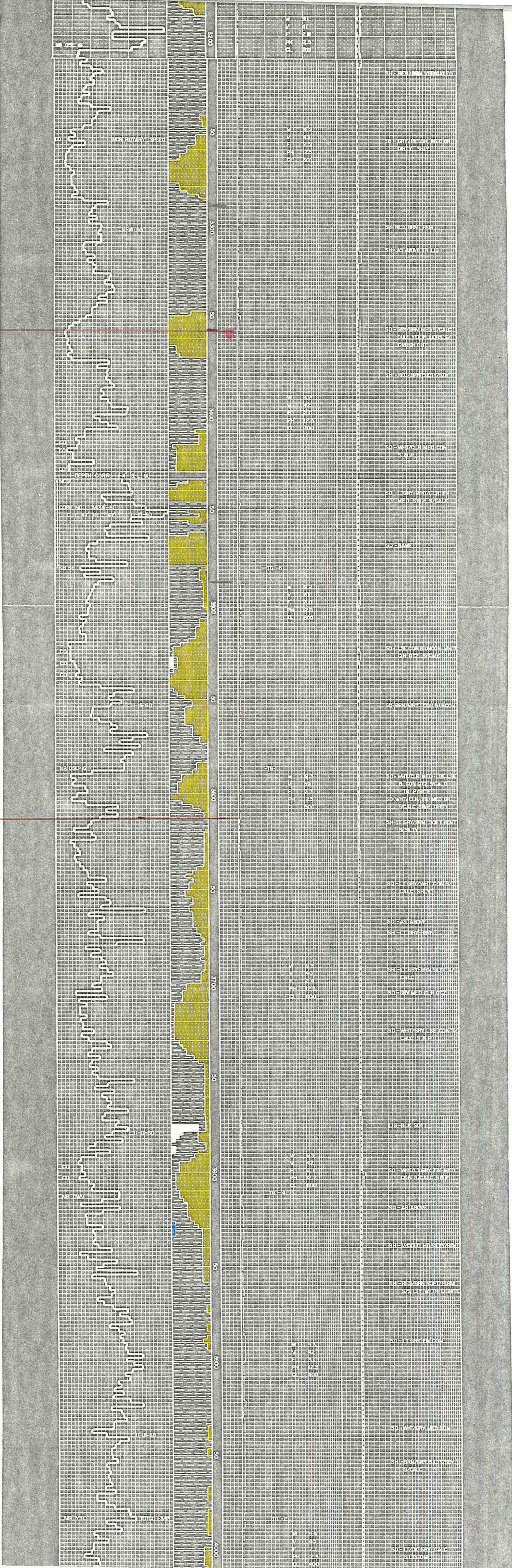
3356

CHAPITA ZONE

3613

PALEOCENE TO 5580'

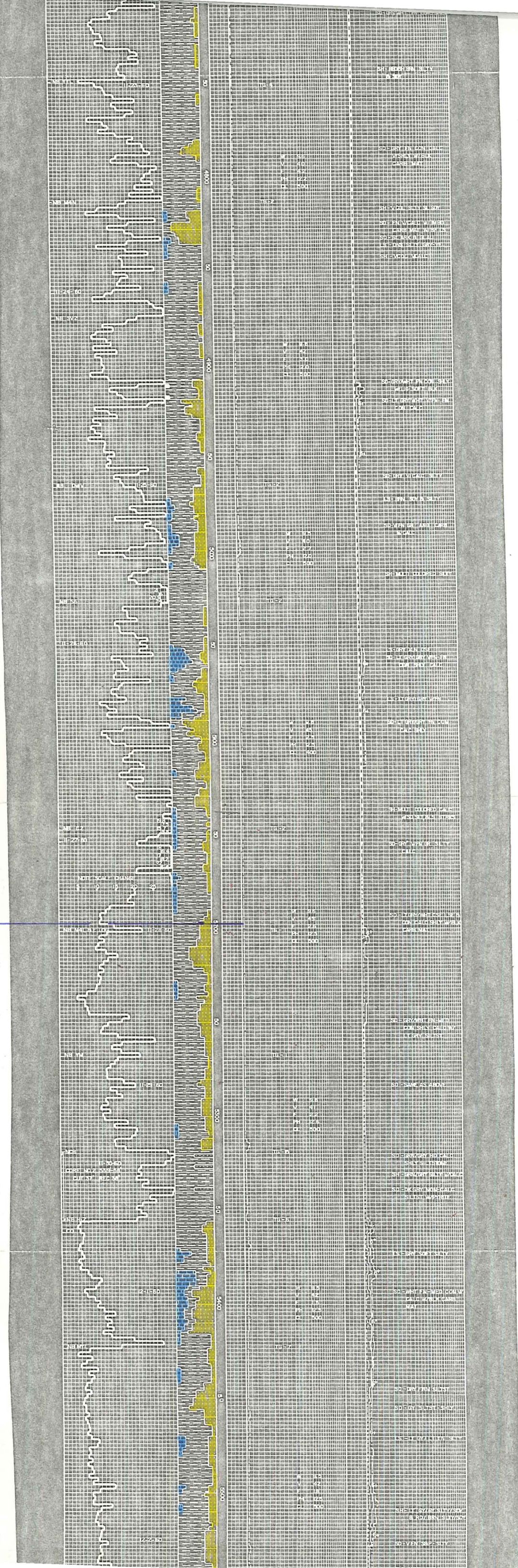
North Horn fm (?)





5196  
140°F

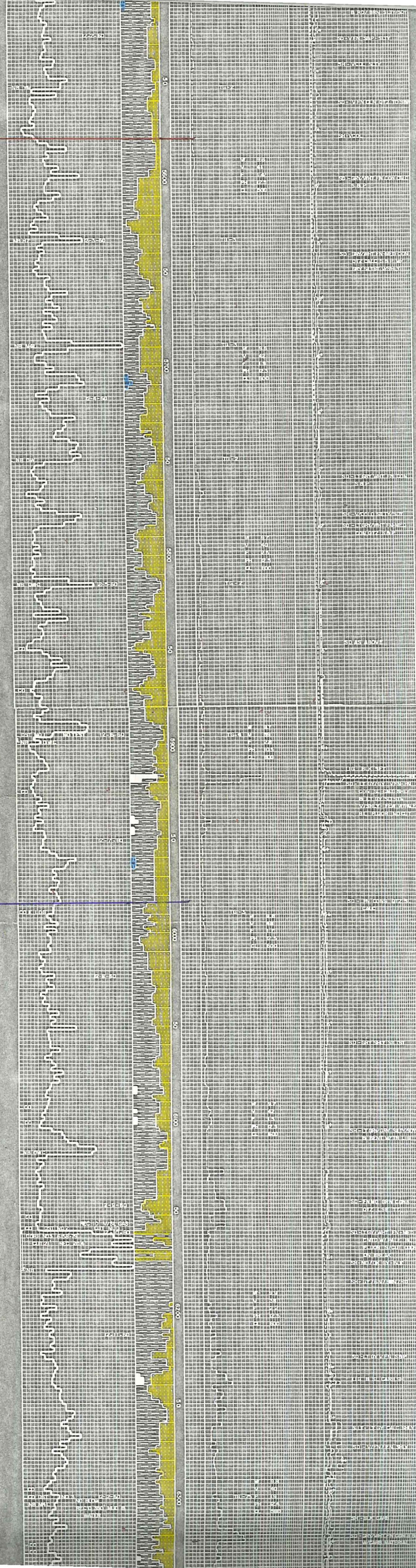
To 3613 ← PALEOCENE



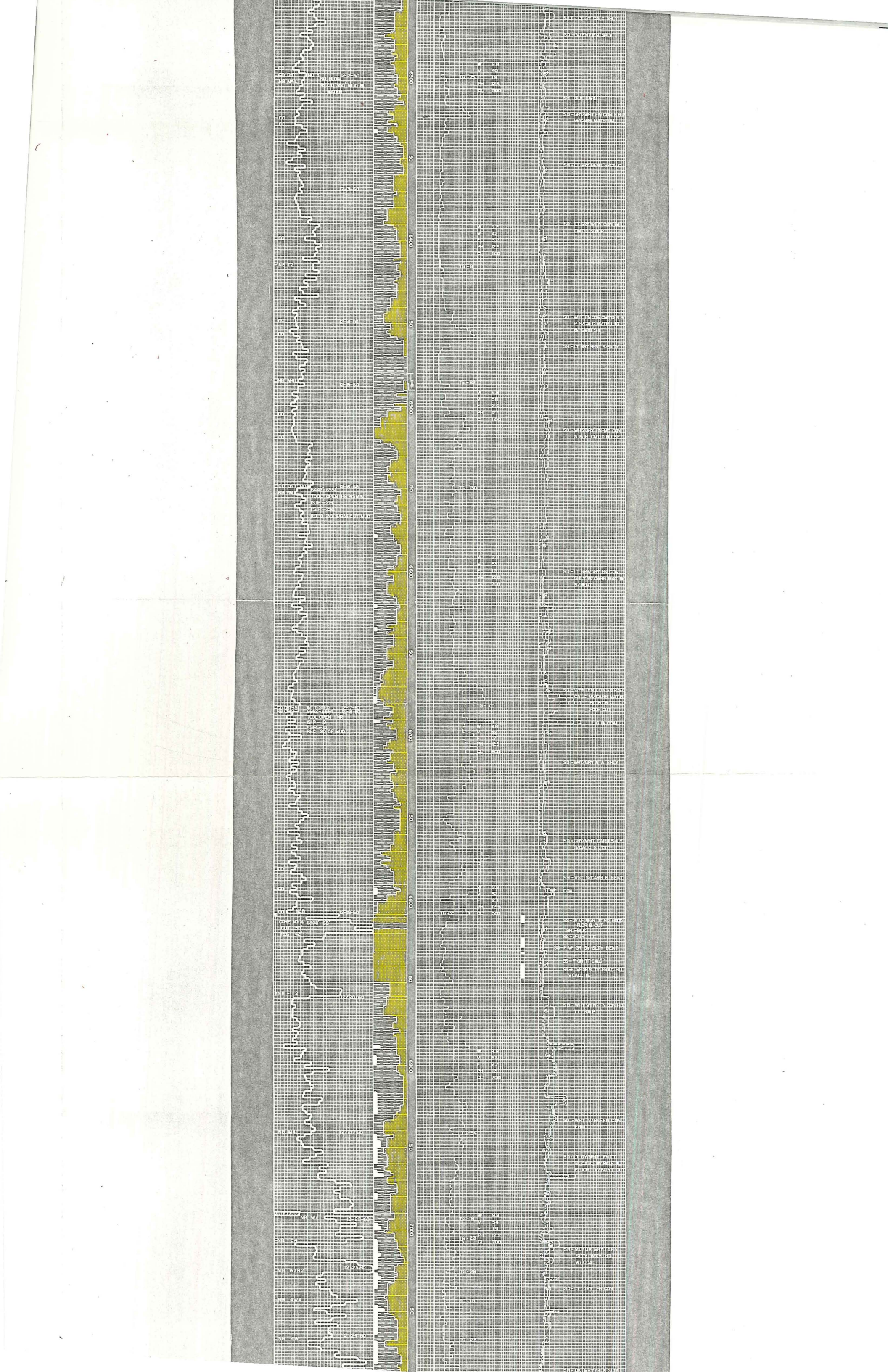
5580

MESAVERDE TO 7710 →

5984  
123°F





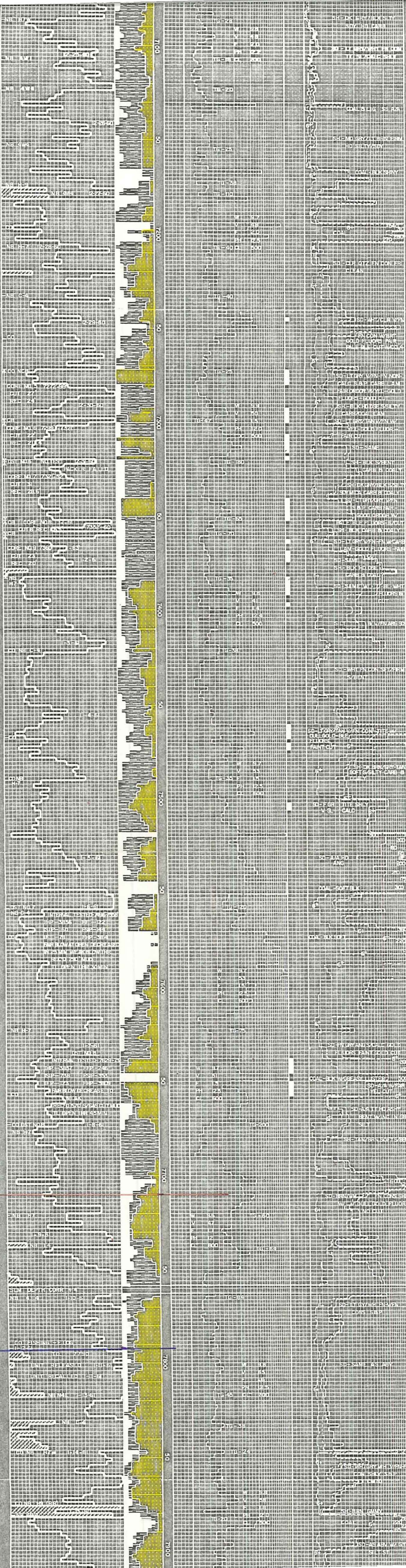


705580 ← MESAVARDE

7710

7792  
140°F

CASTLEGATE



EGGATE

8006

MANCOS

EMERY(?) SS

TO 8514

8516  
148°F

