

Schlumberger

# DIRECTIONAL LOG

COMPUTED

## SCHLUMBERGER

REF 6027

### SCHLUMBERGER DIRECTIONAL SURVEY

NORTH 15 FEET

0 FEET

SOUTH 15 FEET

SOUTH 30 FEET

SOUTH 45 FEET

SOUTH 60 FEET

SOUTH 75 FEET

SOUTH 90 FEET

SOUTH 105 FEET

105 FEET WEST

UNION OIL OF CALIFORNIA

COVE FORT SULFURDALE 14-29

WILDCAT

MILLARD COUNTY, UTAH

RUN NO. 1 1268 - 2062 27-JUN-79 6017

RUN NO. 2 2086 - 2448 7-JUL-79 6027

START OF SURVEY IS CASING AT 3240 FT.

RADIUS OF CURVATURE METHOD

JOB REFERENCE NUMBER 6027

COUNTY	MILLARD
FIELD or LOCATION	WILDCAT
WELL	COVE FORT
SULFURDALE UNIT	14-29
COMPANY	UNION OIL
COMPANY	UNION OIL OF CALIFORNIA
WELL	COVE FORT SULFURDALE UNIT 14-29
FIELD	WILDCAT
COUNTY	MILLARD STATE UTAH
LOCATION	2519.44' FSL, 442' FEL OF N.W. CORNER
Other Services:	
Sec.	29 Twp. 25S Rge. 6W

Permanent Datum:	GL ; Elev.: 6219	Elev.: K.B. 6238.8
Log Measured From	KB 19.8 Ft. Above Perm. Datum	D.F. ----
Drilling Measured From	KB	G.L. 6219

Date	7-7-79
Run No.	TWO
Depth-Driller	2620
Depth-Logger	2467
Btm. Log Interval	2466
Top Log Interval	2088
Depth intervals between shots -	100'
Casing-Driller	9-5/8@ 2078 @ @ @
Casing-Logger	----
Bit Size	8-3/4
Type Fluid in Hole	FRESH WATER
Dens.	Visc. ---- --
pH	Fluid Loss ---- -- ml ml ml ml
Source of Sample	MUD TANK
Rmf @ Meas. Temp.	1.22 @ 64 °F @ °F @ °F @ °F
Rm @ BHT	---- @ -- °F @ °F @ °F @ °F
Time Since Circ.	NA
Max. Rec. Temp.	---- °F °F °F °F
Equip. Location	7674 VERNAL
Recorded By	VALENTI-ENYEART
Witnessed By	IRVINE

FOLD HERE The well name, location and borehole reference data were furnished by the customer.

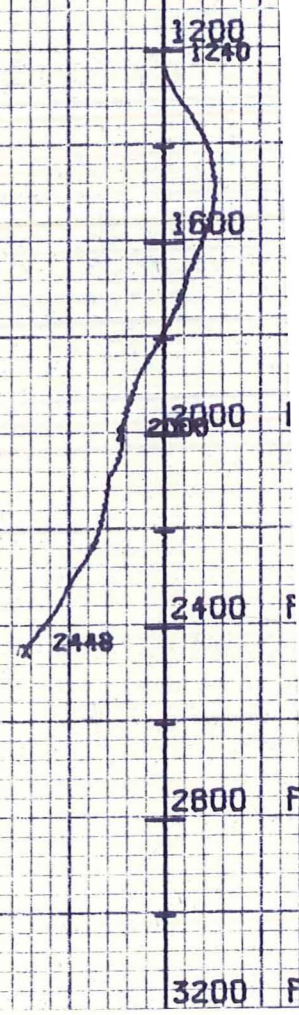
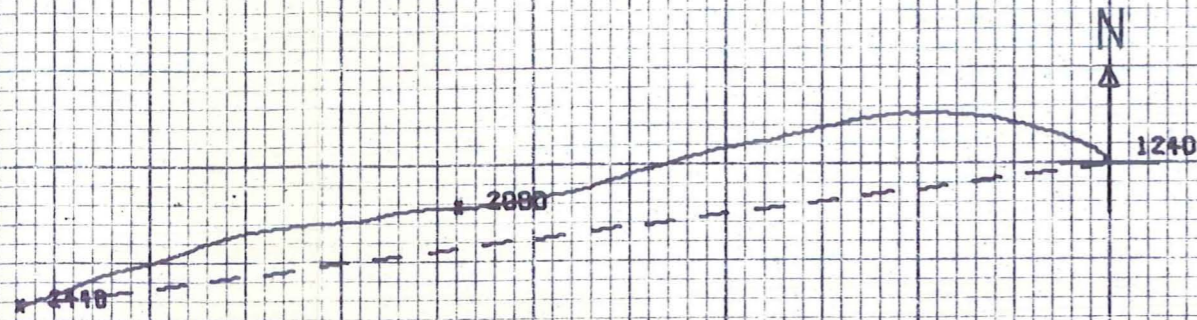
REMARKS: All interpretations are opinions based on inferences from electrical or other measurements and we cannot, and do not, guarantee the accuracy or correctness of any interpretations, and we shall not, except in the case of gross or willful negligence on our part, be liable or responsible for any loss, costs, damages or expenses incurred or sustained by anyone resulting from any interpretation made by one of our officers, agents or employees. These interpretations are also subject to Clause 7 of our General Terms and Conditions as set out in our current Price Schedule.

61011064-0002

SCALE = 15 FT/IN

REF 6027 CROSS-SECTION LOOKING WEST  
-105 FEET SOUTH    -90 FEET SOUTH    -75 FEET SOUTH    -60 FEET SOUTH    -45 FEET SOUTH    -30 FEET SOUTH    -15 FEET SOUTH    0 FEET

HORIZ SCALE = 15 FT/IN    VERT SCALE = 15 FT/IN



SCALE = 400 FT/IN

REF 6027

CROSS-SECTION LOOKING NORTH

HORIZ SCALE = 15 FT/IN

VERT SCALE = 400 FT/IN

FT/IN

15 FEET NORTH

-105 FEET WEST

-90 FEET WEST

-75 FEET WEST

-60 FEET WEST

-45 FEET WEST

-30 FEET WEST

-15 FEET WEST

0 FEET

15 FEET EAST

400 FT

400 FT

800 FT

800 FT

1200 FT

1200 FT

1600 FT

1600 FT

2000 FT

2000 FT

2400 FT

2400 FT

2800 FT

2800 FT

3200 FT

3200 FT

2448

2000

1240

0 FT

0 FT

0 FT

0 FT

0 FT

0 FT

B

B

C

C

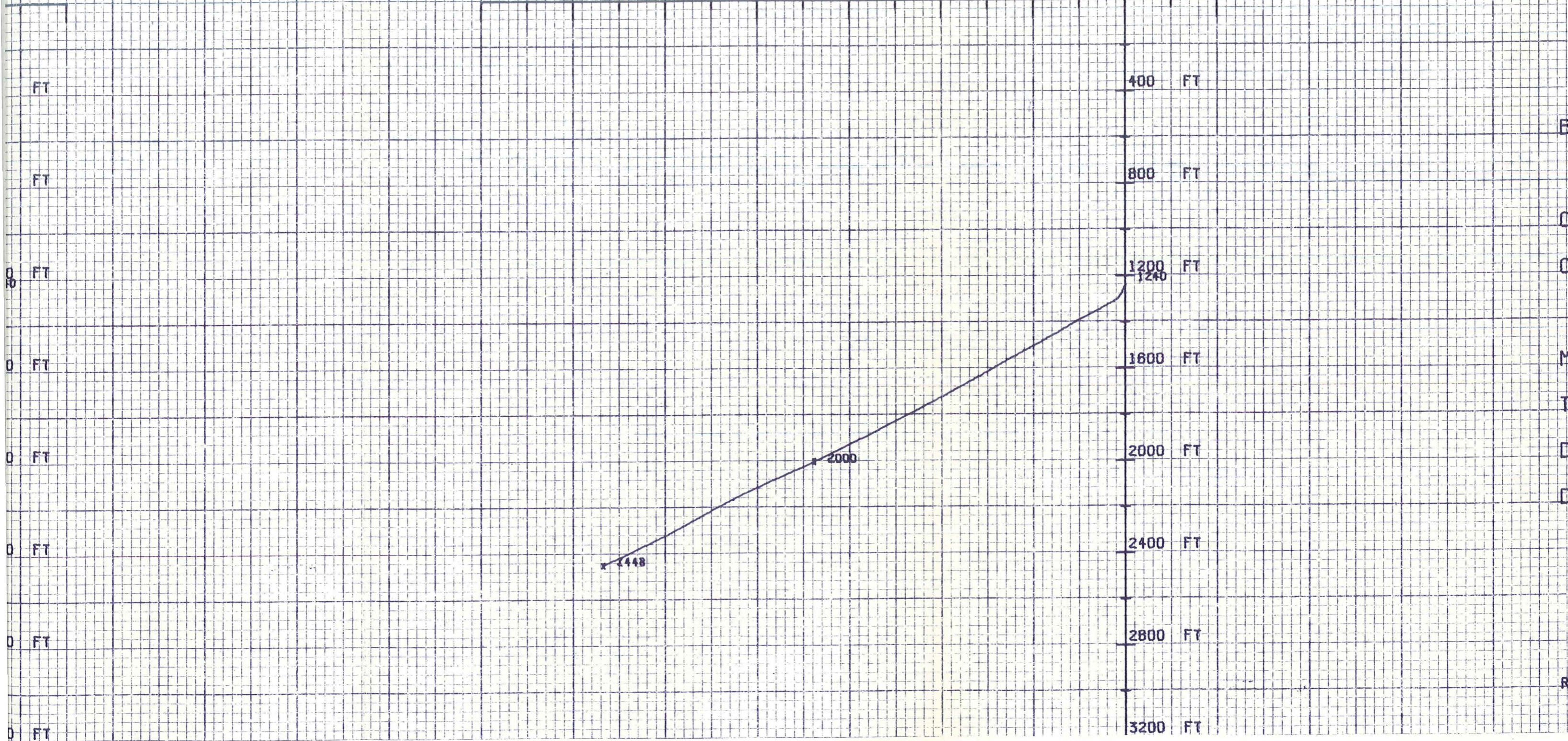
M

T

D

D

RI



REF 6027

EXACT RADIUS OF CURVATURE METHOD

BOTTOM HOLE LOCATION

COURSE LENGTH	85.8	FEET
COURSE AZIMUTH	262.8	DEG.
MEASURED DEPTH	2448.0	FEET
TRUE VERTICAL DEPTH	2444.7	FEET
DISTANCE SOUTH	10.8	FEET
DISTANCE WEST	85.1	FEET

COMPANY UNION OIL OF CALIFORNIA

WELL COVE FORT SULFURDALE UNIT 14-29

FIELD WILDCAT

COUNTY MILLARD STATE UTAH

SCHL. FR 2466

SCHL. TD 2467

DRLR. TD 2620

Elev: KB 6238.8

DF ---

GL 6219