

Schlumberger

DIRECTIONAL LOG  
COMPUTED

COUNTY MILLARD  
FIELD or LOCATION WILDCAT  
WELL COVE FORT SULFURDALE UNIT #14-29  
DATE UNIT #14-29  
COMPANY UNION OIL

COMPANY UNION OIL OF CALIFORNIA

WELL COVE FORT SULFURDALE UNIT #14-29

FIELD WILDCAT

COUNTY MILLARD STATE UTAH

LOCATION 2519.44' S & 442' E OF N.W. CORNER  
Sec. 29 Twp. 25S Rge. 6W

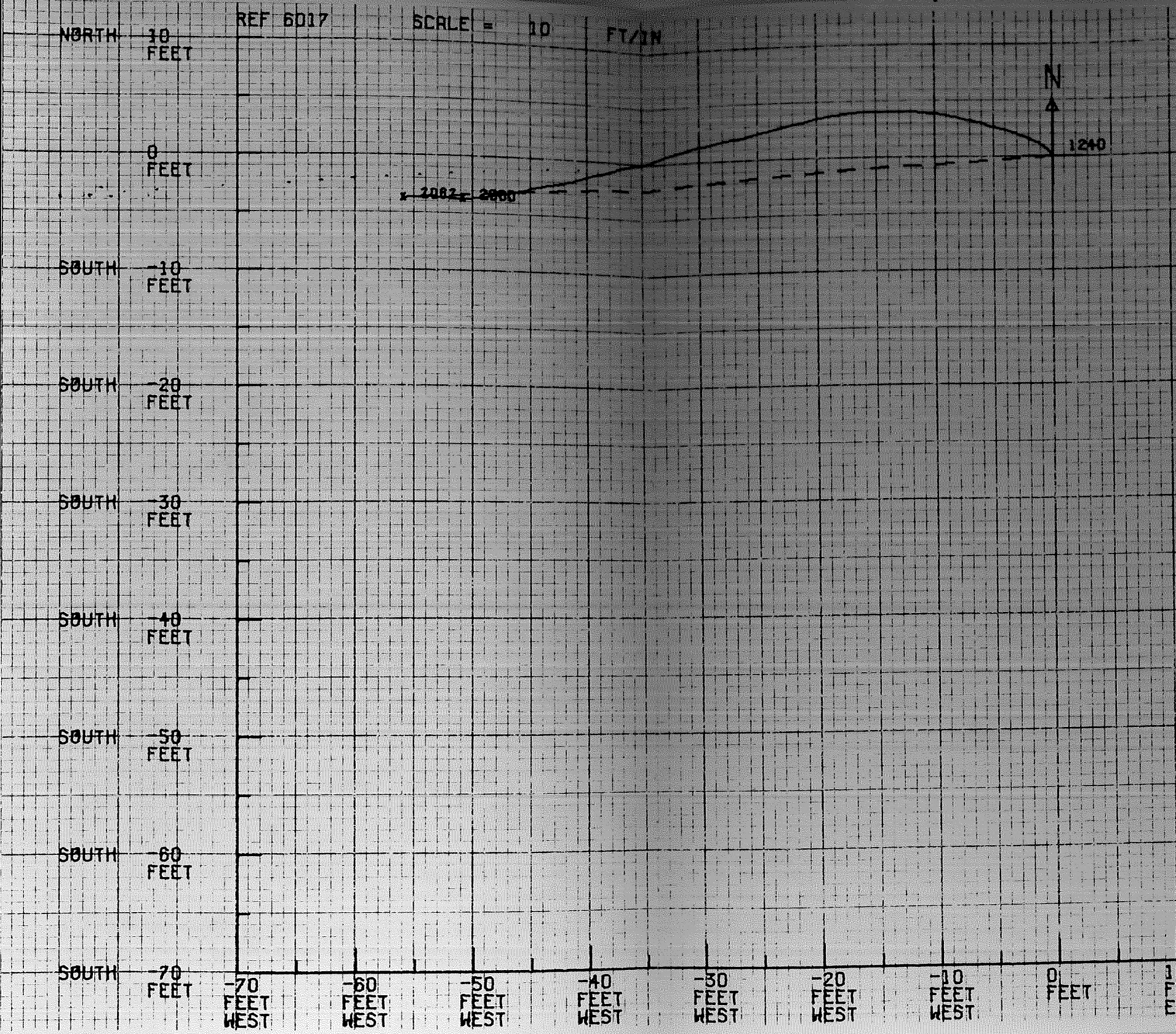
Other Services:

Permanent Datum: GL ; Elev.: 6212  
Log Measured From KB 19.8 Ft. Above Perm. Datum  
Drilling Measured From KB

Elev.: K.B. 6238.8  
D.F. --  
G.L. 6212

Date	6-27-79			
Run No.	ONE			
Depth-Driller	2083			
Depth-Logger	2069			
Btm. Log Interval	2068			
Top Log Interval	1246			
Depth intervals between shots -	100'			
Casing-Driller	13-3/8 @ 1240	@	@	@
Casing-Logger	----			
Bit Size	12-1/4			
Type Fluid in Hole	FRESH WATER			
Dens.	Visc.	NA	NA	
pH	Fluid Loss	NA	NA ml	ml ml ml ml
Source of Sample	FLOWLINE			
Rmf @ Meas. Temp.	1.10 @ 85°F	@ °F	@ °F	@ °F
Rm @ BHT	--- @ --°F	@ °F	@ °F	@ °F
Time Since Circ.	NA			
Max. Rec. Temp.	---- °F	°F	°F	°F
Equip. Location	7674 VERNAL			
Recorded By	VALENTI/ENYEART			
Witnessed By	P. IRVINE			

FOLD HERE  
 The well name, location and borehole reference data were furnished by the customer.  
 All interpretations are opinions based on inferences from electrical or other measurements and we cannot, and do not, guarantee the accuracy or correctness of any interpretations, and we shall not, except in the case of gross or willful negligence on our part, be liable or responsible for any lost costs, damages or expenses incurred or sustained by anyone resulting from any interpretation made by one of our officers, agents or employees. These interpretations are also subject to Clause 7 of our General Terms and Conditions as set out in our current Price Schedule.



6201664-0001

REF 6017 CROSS-SECTION LOOKING WEST

HORIZ SCALE = 10

FT/IN

VERT SCALE = 400

FT/IN

REF 6017

CROSS-SECTION LOOKING NORTH

H0

70  
FEET  
SOUTH

60  
FEET  
SOUTH

50  
FEET  
SOUTH

40  
FEET  
SOUTH

30  
FEET  
SOUTH

20  
FEET  
SOUTH

10  
FEET  
SOUTH

0  
FEET

10  
FEET  
NORTH

70  
FEET  
WEST

60  
FEET  
WEST

50  
FEET  
WEST

40  
FEET  
WEST

30  
FEET  
WEST

400 FT

800 FT

1200 FT

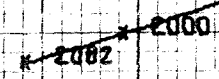
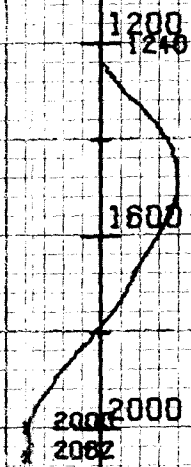
1600 FT

2000 FT

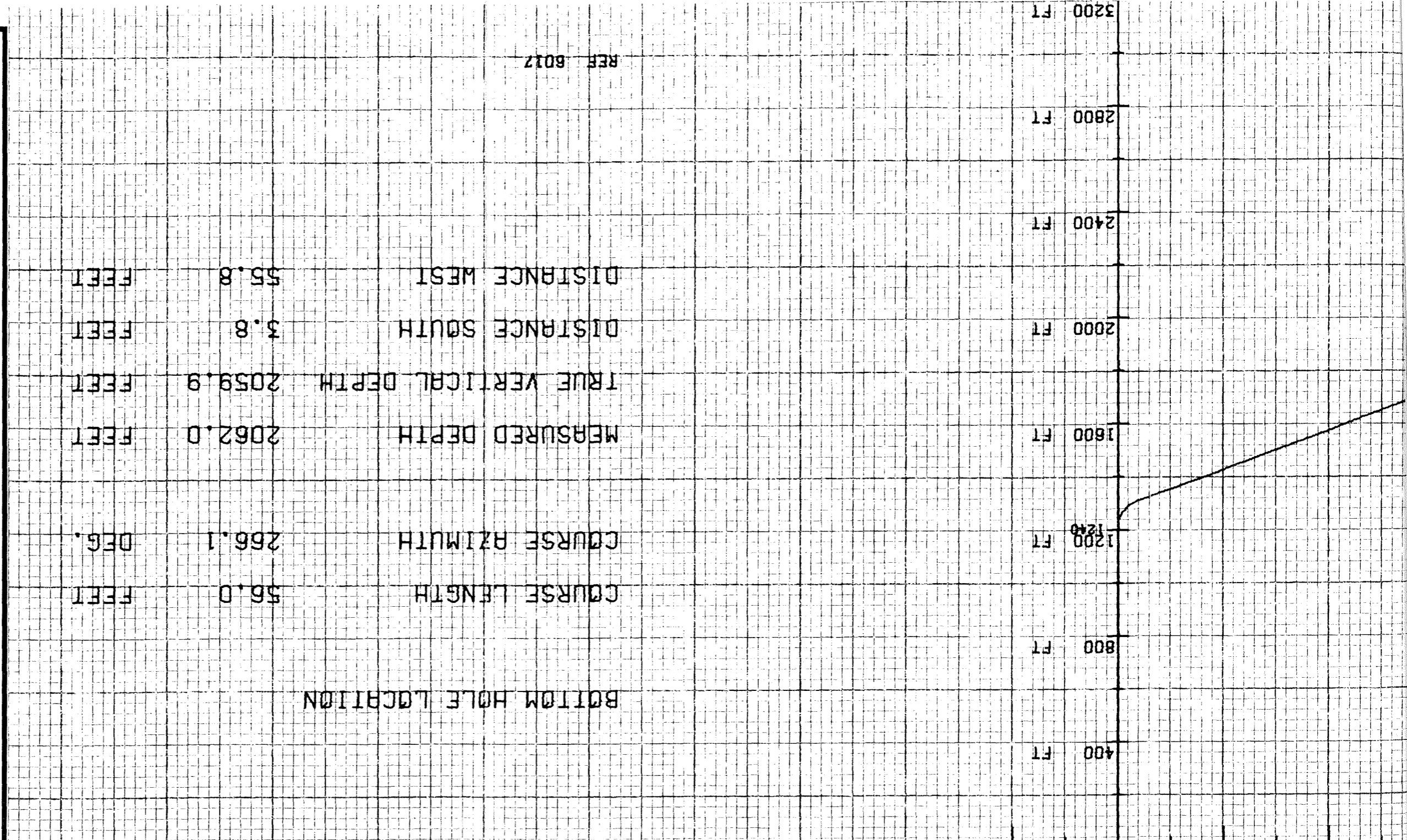
2400 FT

2800 FT

3200 FT



VERT SCALE = 10 FT/IN  
 VERT SCALE = 400 FT/IN  
 EXACT RADIUS OF CURVATURE METHOD



COMPANY UNID. OIL OF CALIFORNIA

WELL COVE FORT SULFURDALE UNIT - 14-29

FIELD WILDCAT

COUNTY HILLARD STATE UTAH

SCHL. FR. 2068

SCHL. TD. 2069

DRIL. TD. 2083

Elev: KB 6238.8

DF --

GL ---