

Schlumberger

DIRECTIONAL LOG

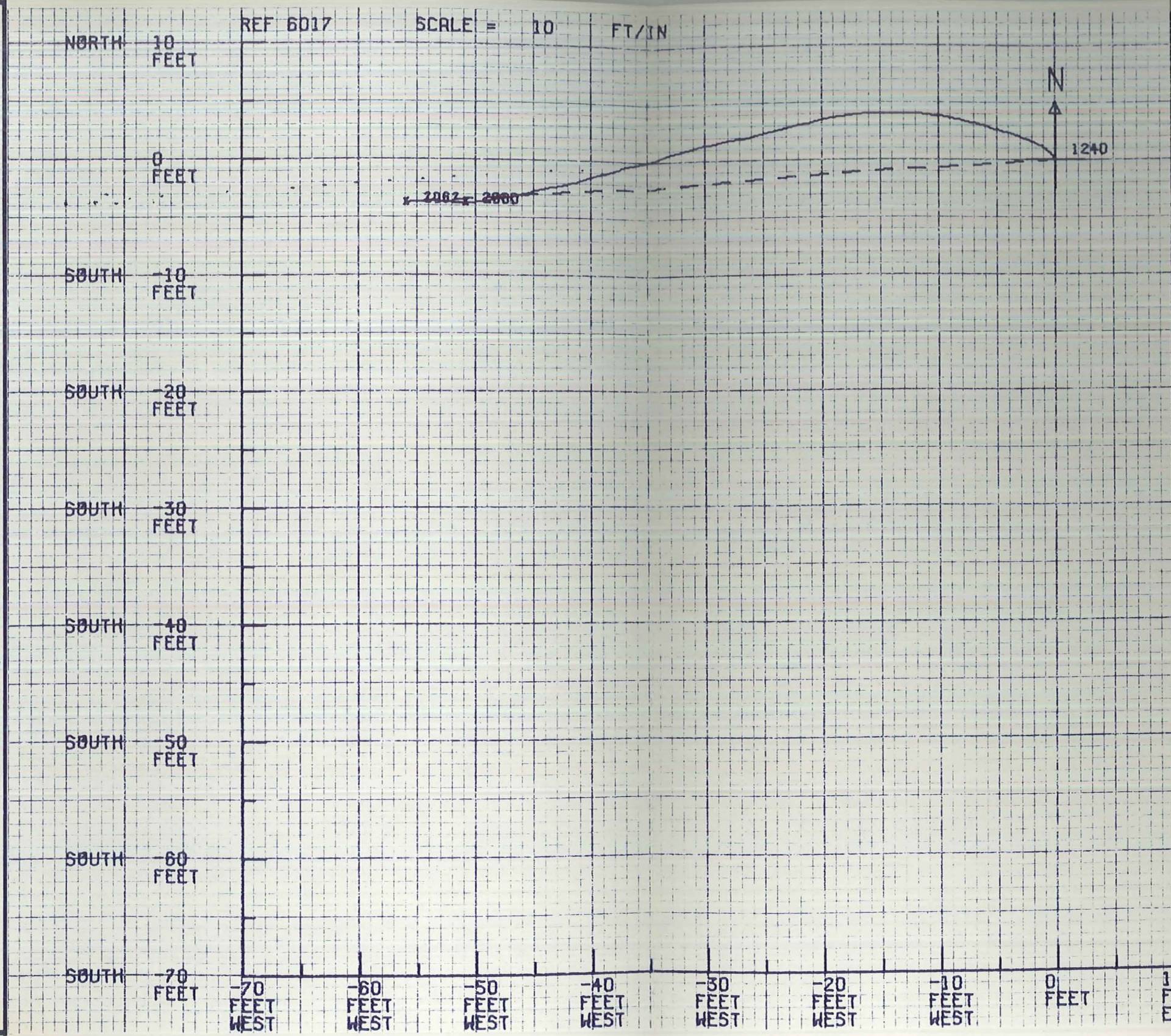
COMPUTED

COUNTY MILLARD	COMPANY UNION OIL OF CALIFORNIA
FIELD or LOCATION WILDCAT	WELL COVE FORT SULFURDALE UNIT #14-29
WELL COVE FORT SULFURDALE UNIT #14-29	DATE UNIT #14-29
COMPANY UNION OIL	FIELD WILDCAT
COUNTY MILLARD	STATE UTAH
LOCATION 2519.44' S & 442' E OF N.W. CORNER	Other Services:
Sec. 29 Twp. 25S Rge. 6W	

Permanent Datum: GL	Elev.: 6212	Elev.: K.B. 6238.8
Log Measured From KB	19.8 Ft. Above Perm. Datum	D.F. --
Drilling Measured From KB		G.L. 6212

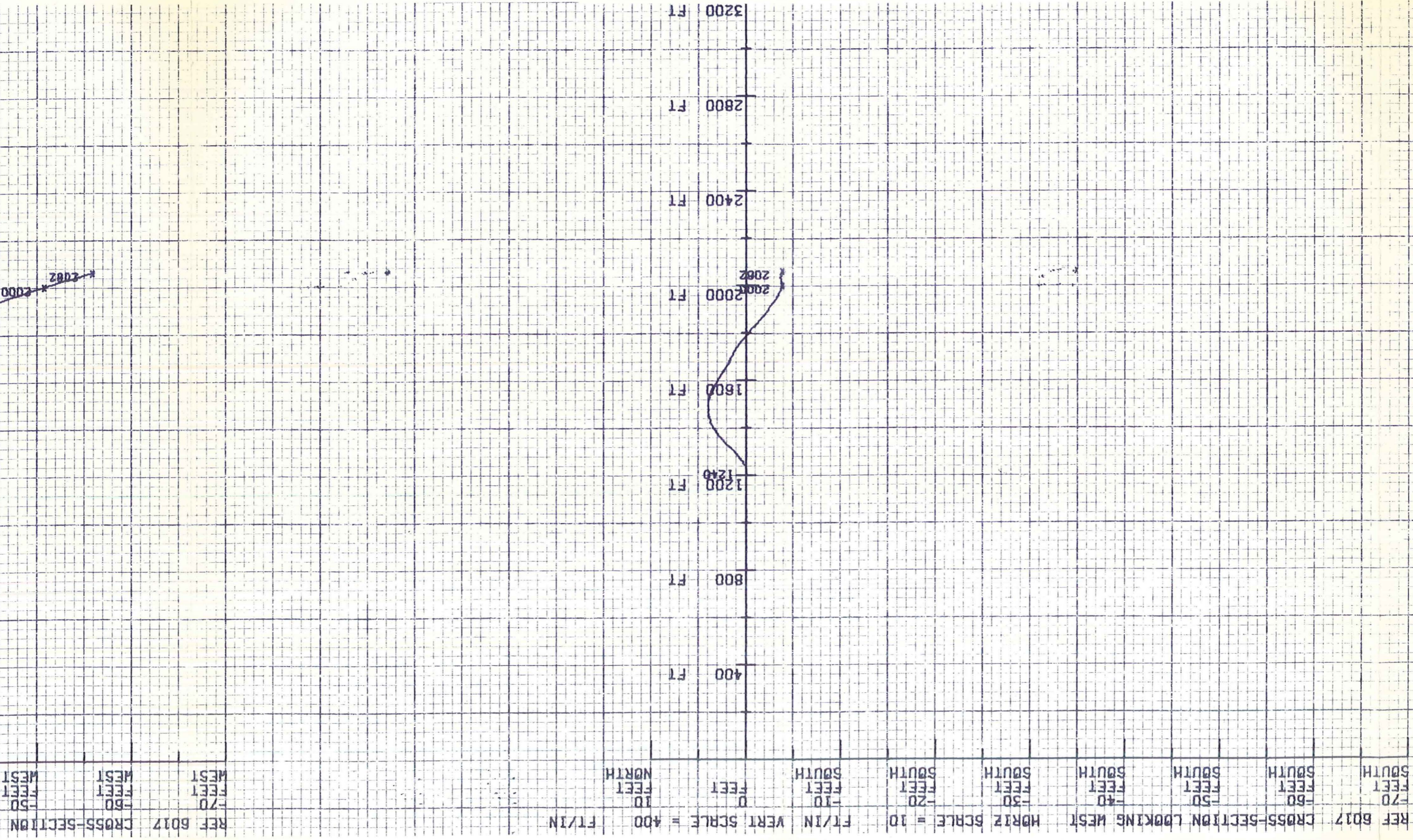
Date	6-27-79		
Run No.	ONE		
Depth-Driller	2083		
Depth-Logger	2069		
Btm. Log Interval	2068		
Top Log Interval	1246		
Depth intervals between shots -	100'		
Casing-Driller	13-3/8@1240	@	@
Casing-Logger	----		
Bit Size	12-1/4		
Type Fluid in Hole	FRESH WATER		
Dens.	NA	NA	
Visc.	NA	NA	
pH	NA	NA	ml
Fluid Loss	NA	NA	ml
Source of Sample	FLOWLINE		
Rmf @ Meas. Temp.	1.10@ 85°F	@ °F	@ °F
Rm @ BHT	--- @ --°F	@ °F	@ °F
Time Since Circ.	NA		
Max. Rec. Temp.	---- °F	°F	°F
Equip.	7674 VERNAL		
Location	VALENTI/ENYEART		
Recorded By	P. IRVINE		
Witnessed By			

FOLD HERE
 REMARKS: All interpretations are opinions based on inferences from electrical or other measurements and we cannot, and do not, guarantee the accuracy or correctness of any interpretation, and we shall not, except in the case of gross or willful negligence on our part, be liable or responsible for any loss, costs, damages or expenses incurred or sustained by anyone resulting from any interpretation made by one of our officers, agents or employees. These interpretations are also subject to Clause 7 of our General Terms and Conditions as set out in our current Price Schedule.



6101655 - DOC #2

REF 6017



10 FEET

20 FEET

30 FEET

40 FEET

50 FEET

60 FEET

70 FEET

80 FEET

90 FEET

100 FEET

110 FEET

120 FEET

130 FEET

140 FEET

150 FEET

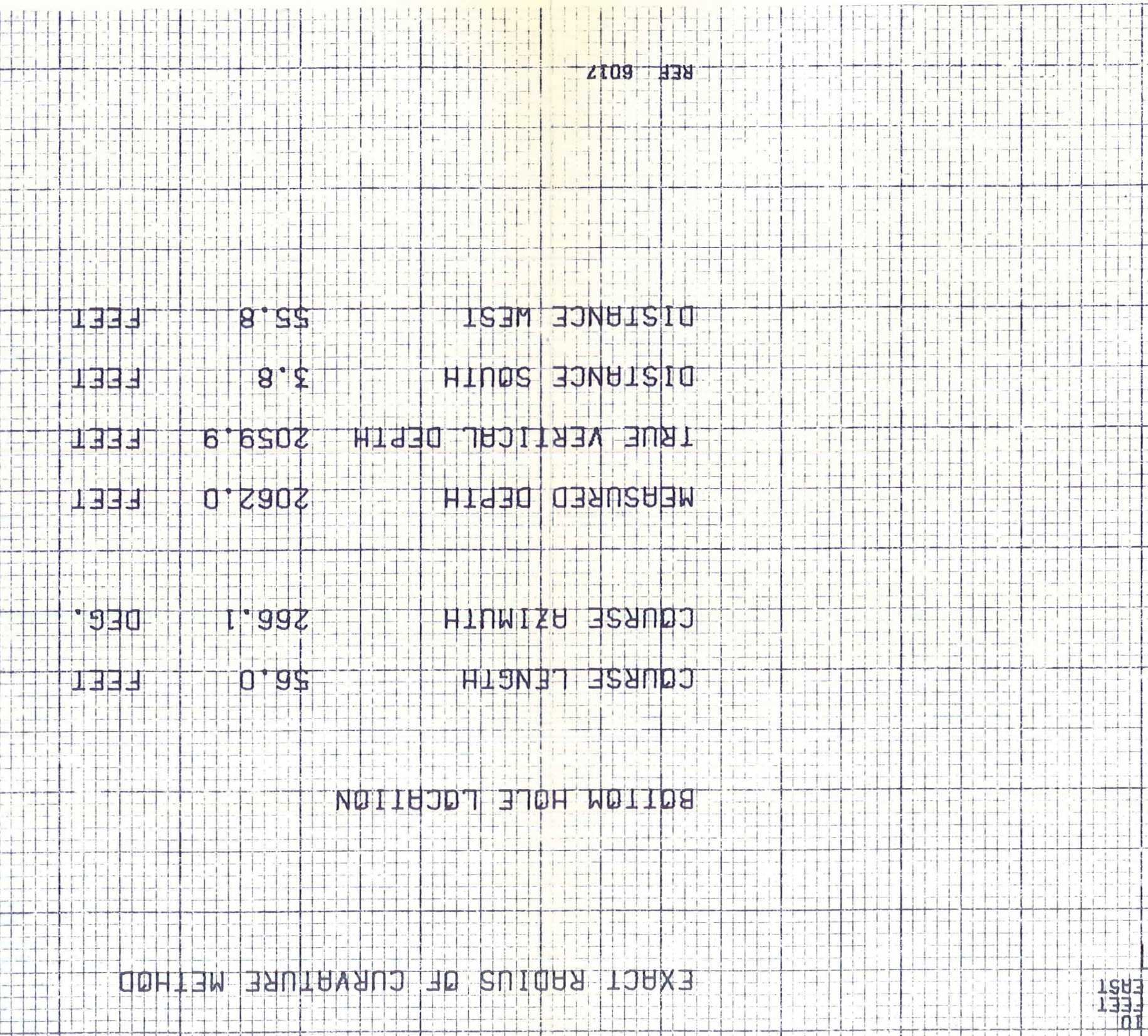
REF 6017 CROSS-SECTION LOOKING WEST

REF 6017

CROSS-SECTION LOOKING EAST

NORTH HORIZ SCALE = 10 FT/IN VERT SCALE = 400 FT/IN

10 FEET WEST
 20 FEET WEST
 30 FEET WEST
 40 FEET WEST
 50 FEET WEST
 60 FEET WEST
 70 FEET WEST
 80 FEET WEST
 90 FEET WEST
 100 FEET WEST
 110 FEET WEST
 120 FEET WEST
 130 FEET WEST
 140 FEET WEST
 150 FEET WEST
 160 FEET WEST
 170 FEET WEST
 180 FEET WEST
 190 FEET WEST
 200 FEET WEST
 210 FEET WEST
 220 FEET WEST
 230 FEET WEST
 240 FEET WEST
 250 FEET WEST
 260 FEET WEST
 270 FEET WEST
 280 FEET WEST
 290 FEET WEST
 300 FEET WEST
 310 FEET WEST
 320 FEET WEST
 330 FEET WEST
 340 FEET WEST
 350 FEET WEST
 360 FEET WEST
 370 FEET WEST
 380 FEET WEST
 390 FEET WEST
 400 FEET WEST
 410 FEET WEST
 420 FEET WEST
 430 FEET WEST
 440 FEET WEST
 450 FEET WEST
 460 FEET WEST
 470 FEET WEST
 480 FEET WEST
 490 FEET WEST
 500 FEET WEST
 510 FEET WEST
 520 FEET WEST
 530 FEET WEST
 540 FEET WEST
 550 FEET WEST
 560 FEET WEST
 570 FEET WEST
 580 FEET WEST
 590 FEET WEST
 600 FEET WEST
 610 FEET WEST
 620 FEET WEST
 630 FEET WEST
 640 FEET WEST
 650 FEET WEST
 660 FEET WEST
 670 FEET WEST
 680 FEET WEST
 690 FEET WEST
 700 FEET WEST
 710 FEET WEST
 720 FEET WEST
 730 FEET WEST
 740 FEET WEST
 750 FEET WEST
 760 FEET WEST
 770 FEET WEST
 780 FEET WEST
 790 FEET WEST
 800 FEET WEST
 810 FEET WEST
 820 FEET WEST
 830 FEET WEST
 840 FEET WEST
 850 FEET WEST
 860 FEET WEST
 870 FEET WEST
 880 FEET WEST
 890 FEET WEST
 900 FEET WEST
 910 FEET WEST
 920 FEET WEST
 930 FEET WEST
 940 FEET WEST
 950 FEET WEST
 960 FEET WEST
 970 FEET WEST
 980 FEET WEST
 990 FEET WEST
 1000 FEET WEST



EXACT RADIUS OF CURVATURE METHOD

BOTTOM HOLE LOCATION

COURSE LENGTH 56.0 FEET
 COURSE AZIMUTH 266.1 DEG.
 MEASURED DEPTH 2062.0 FEET
 TRUE VERTICAL DEPTH 2059.9 FEET
 DISTANCE SOUTH 3.8 FEET
 DISTANCE WEST 55.8 FEET

REF 6017

COMPANY UNION OIL OF CALIFORNIA
 WELL COVE FORT SULFURDALE UNIT #14-29
 FIELD WILDCAT
 COUNTY MILLARD STATE UTAH

SCHL. FR 2068
 SCHL. TD 2069
 DRLR. TD 2083
 Elev: KB 6238.3
 DF --
 GI ---