

Schlumberger

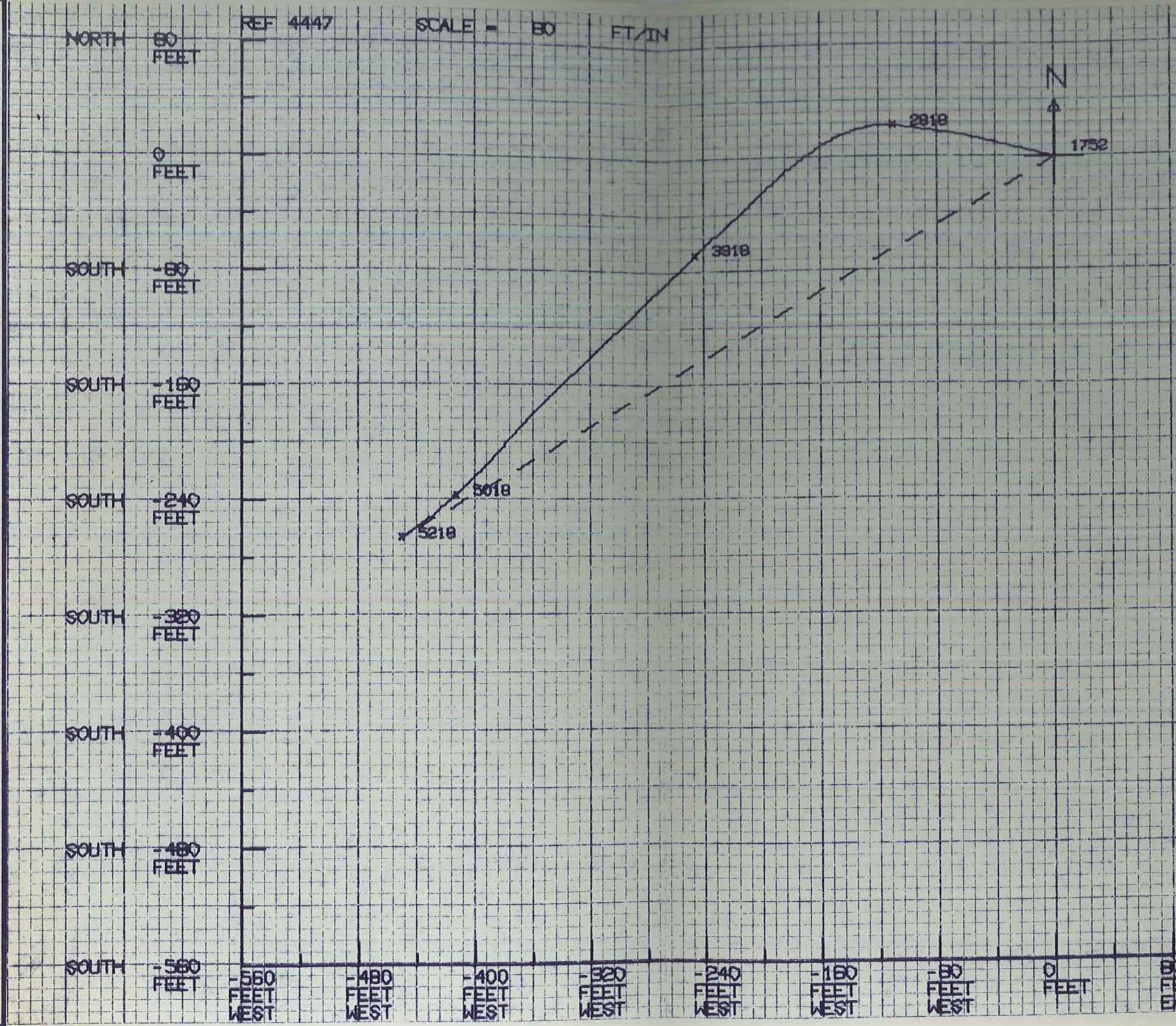
DIRECTIONAL LOG

COMPUTED

COUNTY MILLARD	COMPANY UNION OIL CO.		
FIELD or LOCATION COVE FORT	WELL COVE FORT #31-33		
WELL COVE FORT #31-33	FIELD COVE FORT		
COUNTY MILLARD	STATE UTAH	LOCATION	
Sec. 33	Twp. 255	Rge. 6W	Other Services: DIL, TEMP. FDC/CNL-GR BHC-GR
Permanent Datum: GL	; Elev.: 6481		Elev.: K.B. 6501
Log Measured From KB	, 20 Ft. Above Perm. Datum		D.F. ---
Drilling Measured From KB			G.L. 6481
Date	7-18-78		
Run No.	ONE		
Depth-Driller	5221		
Depth-Logger	5208		
Btm. Log Interval	5207		
Top Log Interval	1735		
Depth intervals between shots -	100'		
Casing-Driller	13-3/8@1735	@	@
Casing-Logger	1735		
Bit Size	12-1/4		
Type Fluid in Hole	WATER		
Dens.	Visc.	--	
pH	Fluid Loss	ml	ml
Source of Sample	--		
Rmf @ Meas. Temp.	-- @ -- °F	@ °F	@ °F
Rm @ BHT	-- @ -- °F	@ °F	@ °F
Time Since Circ.	NA		
Max. Rec. Temp.	NA °F	°F	°F
Equip. Location	7711 FARM.		
Recorded By	BRUCE-BECK		
Witnessed By	MOSS-IRVINE		

FOLD HERE

REMARKS: All interpretations are opinions based on inferences from electrical or other measurements and we cannot, and do not, guarantee the accuracy or correctness of any interpretations, and we shall not, except in the case of gross or willful negligence on our part, be liable or responsible for any loss, costs, damages or expenses incurred or sustained by anyone resulting from any interpretation made by one of our officers, agents or employees. These interpretations are also subject to Clause 7 of our General Terms and Conditions as set out in our current Price Schedule.



620/10560-DOC 1

80 FEET EAST

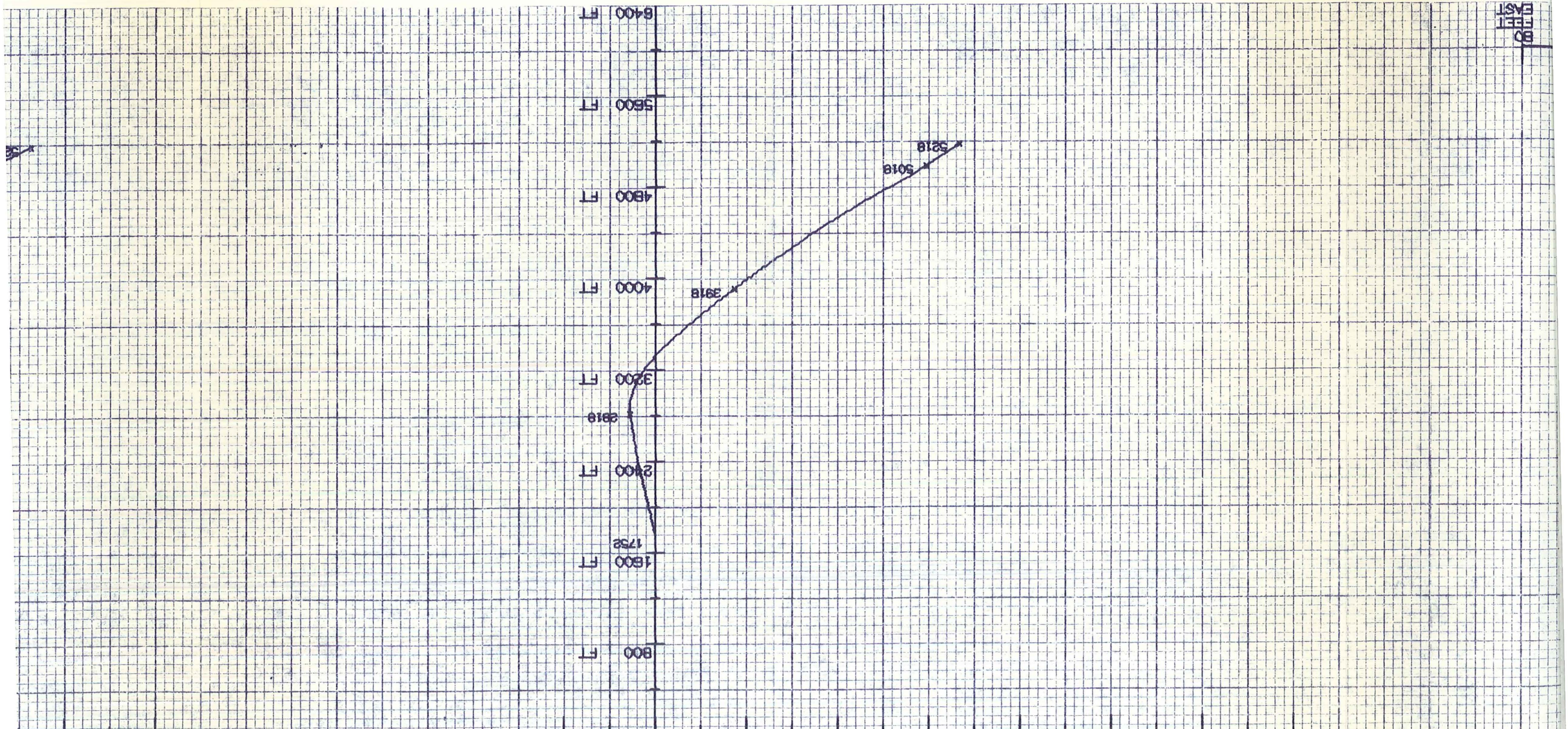
8400 FT
5600 FT
4800 FT
4000 FT
3200 FT
2400 FT
1800 FT
800 FT

5218
5018

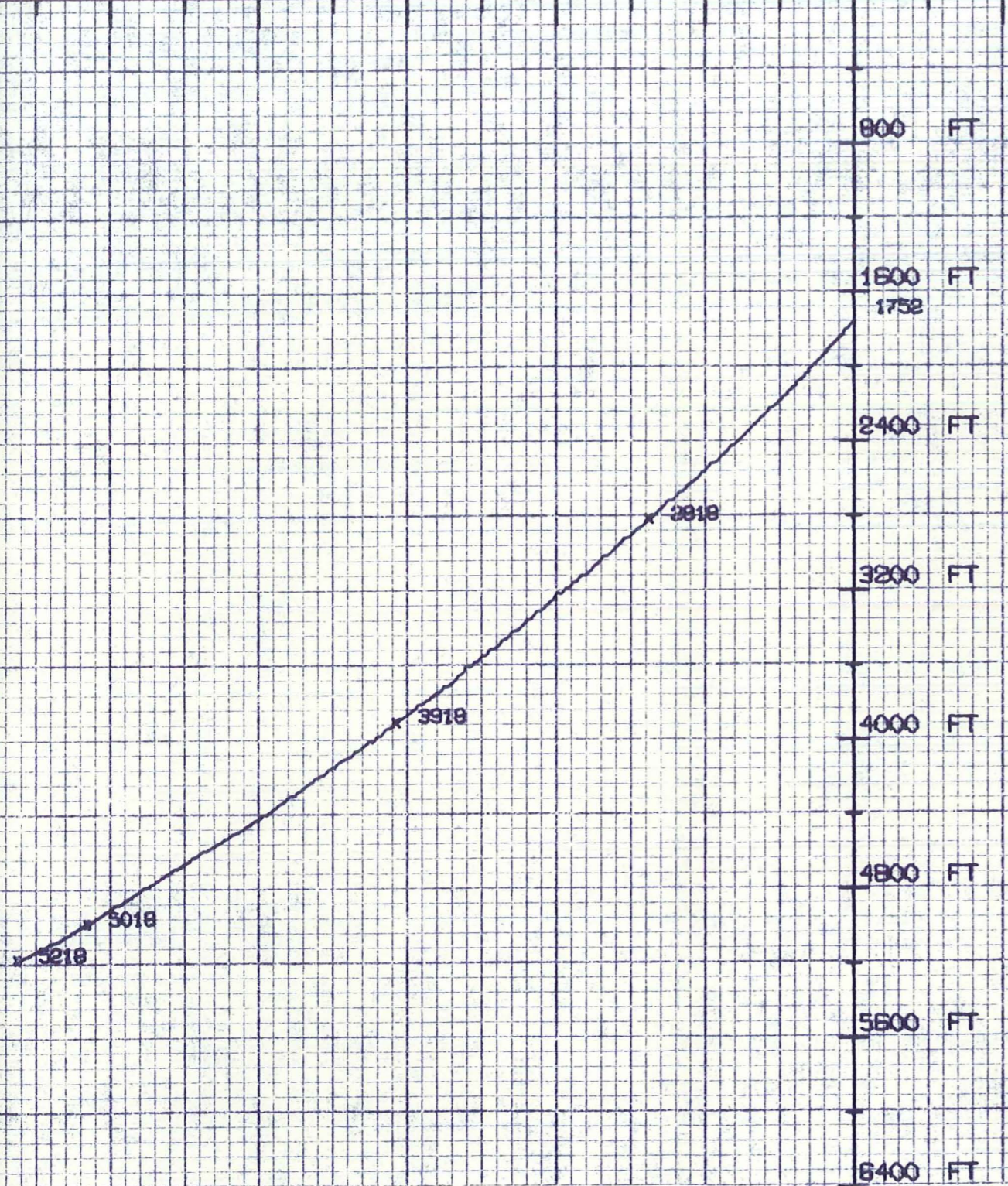
3918

2918

REF 4447 CROSS-SECTION LOOKING WEST
FEET SOUTH -550
FEET SOUTH -480
FEET SOUTH -400
FEET SOUTH -320
FEET SOUTH -240
FEET SOUTH -180
FEET SOUTH -90
FT/IN VERT SCALE = 800
FT/IN
0 FEET
FEET NORTH
REF 4447 CROSS-SECTION LOOKING WEST
FEET WEST -480
FEET WEST -550



CROSS-SECTION LOOKING NORTH HORIZ SCALE = 80 FT/IN VERT SCALE = 800 FT/IN
 480 FEET EAST -400 FEET WEST -320 FEET WEST -240 FEET WEST -160 FEET WEST -80 FEET WEST 0 FEET 80 FEET EAST



EXACT RADIUS OF CURVATURE METHOD

BOTTOM HOLE LOCATION

COURSE LENGTH	523.0	FEET
COURSE AZIMUTH	239.4	DEG.
MEASURED DEPTH	5218.0	FEET
TRUE VERTICAL DEPTH	5166.9	FEET
DISTANCE SOUTH	266.1	FEET
DISTANCE WEST	450.3	FEET

REF 4447

CT RADIUS OF CURVATURE METHOD

TOM HOLE LOCATION

INCLINATION	DEPTH	INCLINATION	DEPTH	INCLINATION	DEPTH	INCLINATION	DEPTH
450.3	FEET	266.1	FEET	5166.9	FEET	5218.0	FEET
239.4	DEG.	523.0	FEET				

COMPANY UNION OIL COMPANY OF CALIFORNIA

WELL COVE FORT #31-33

FIELD COVE FORT

COUNTY MILLARD STATE UTAH

Schlumberger