

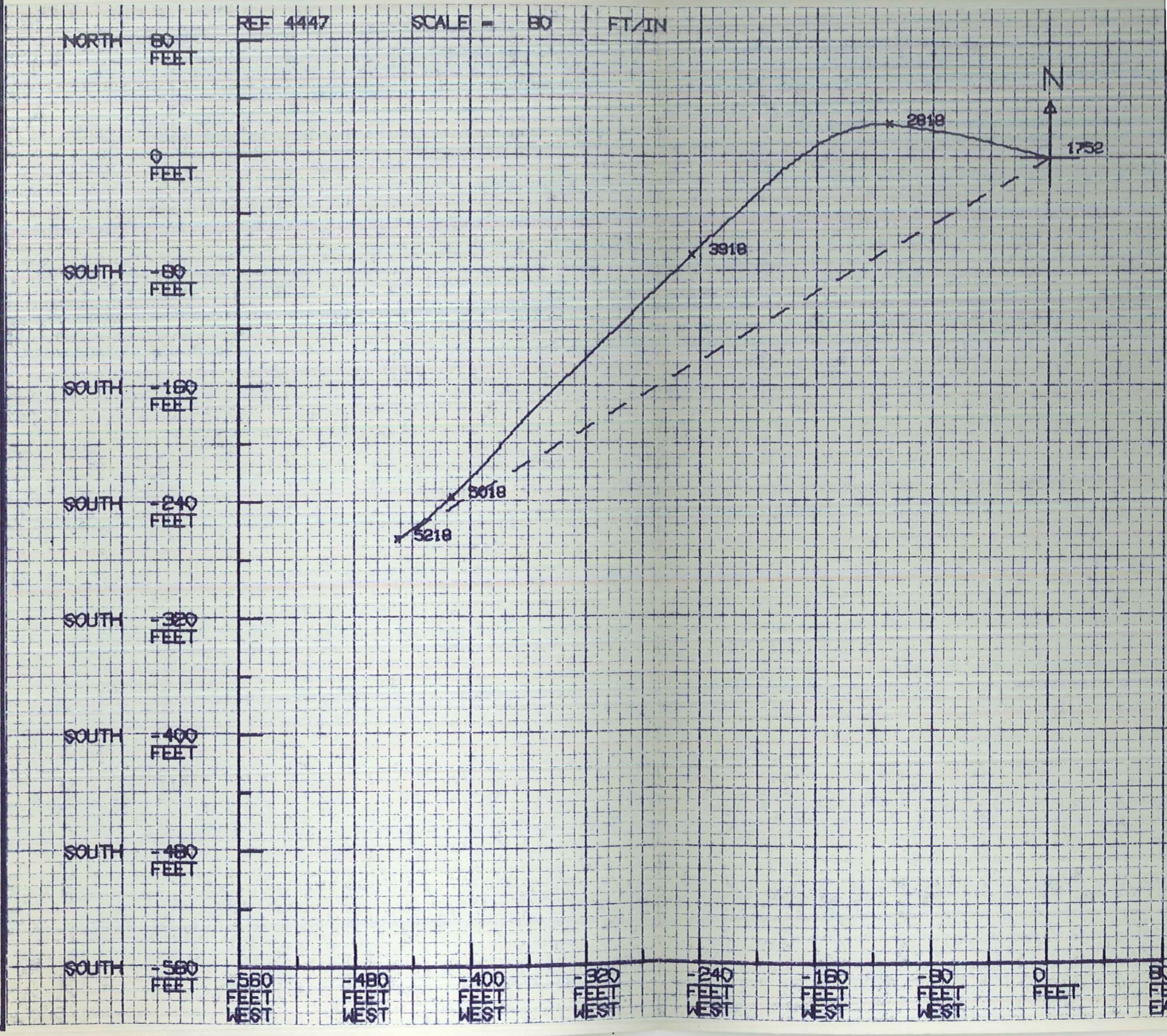
Schlumberger

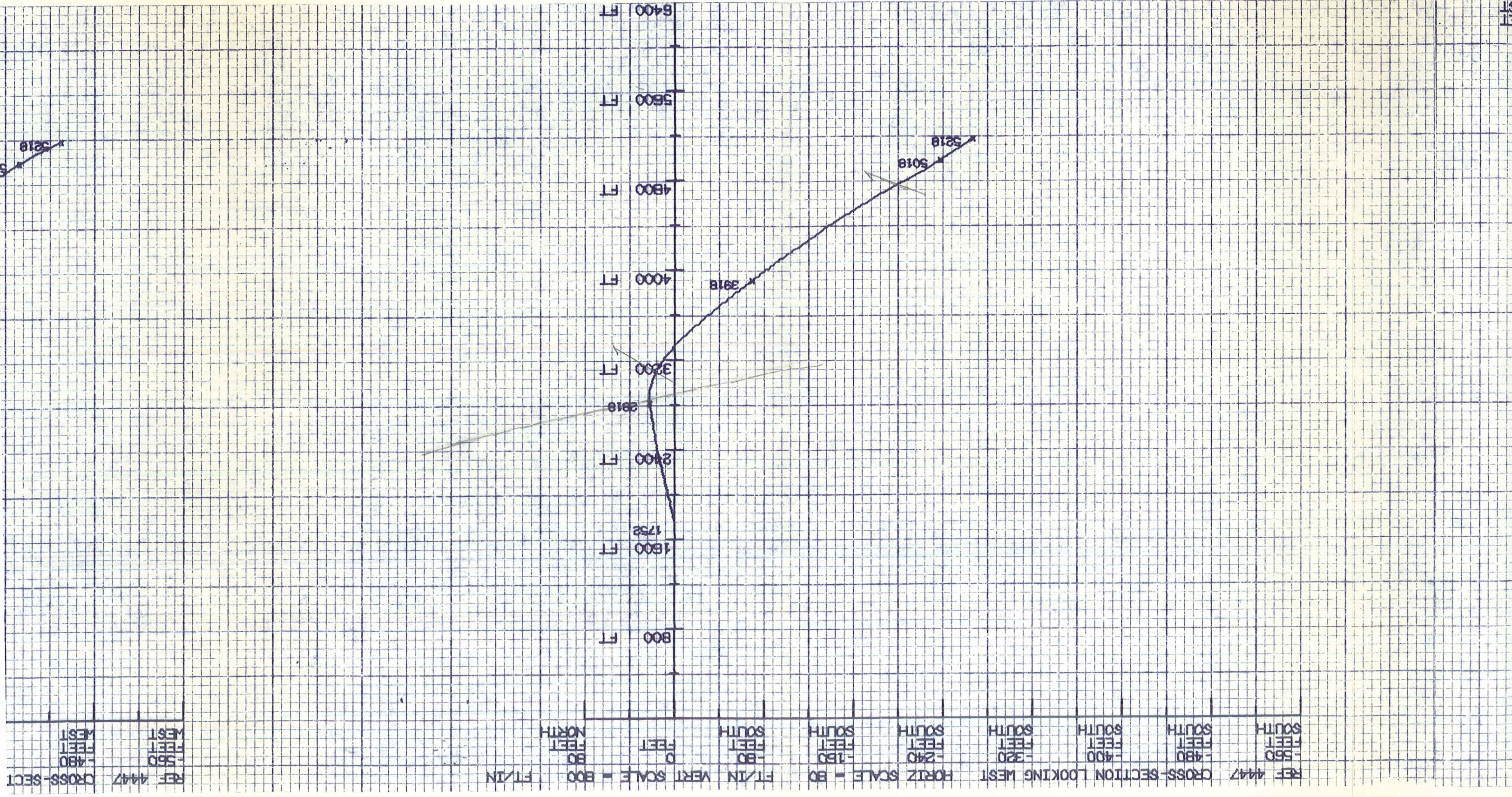
# DIRECTIONAL LOG

COMPUTED

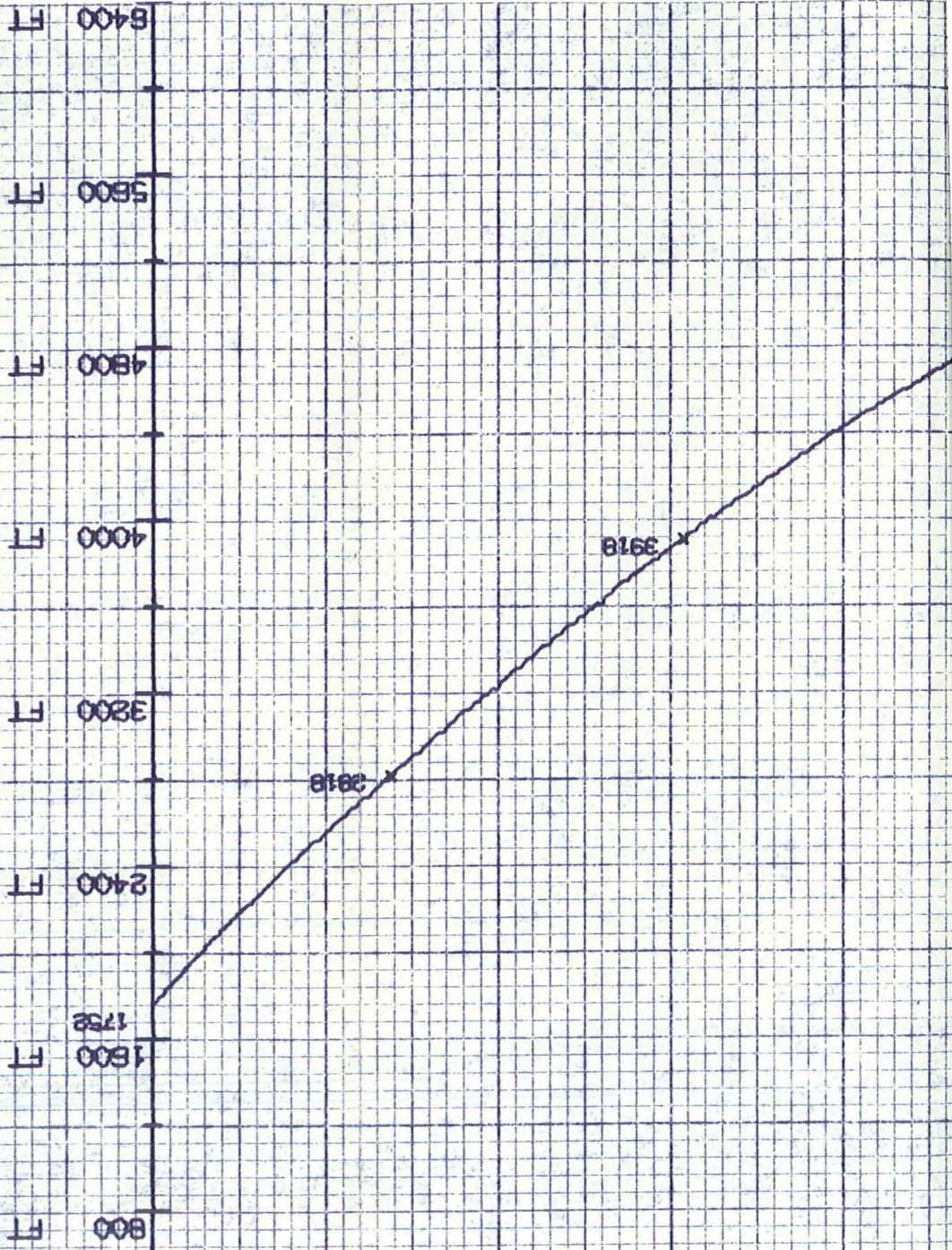
COUNTY MILLARD FIELD or LOCATION COVE FORT WELL COVE FORT #31-33	COMPANY UNION OIL CO.	COMPANY UNION OIL COMPANY OF CALIFORNIA
WELL COVE FORT #31-33	FIELD COVE FORT	
COUNTY MILLARD	STATE UTAH	
LOCATION	Other Services: DIL, TEMP. FDC/CNL-GR BHC-GR	
Sec. 33 Twp. 255 Rge. 6W		
Permanent Datum: GL ; Elev.: 6481	Elev.: K.B. 6501	
Log Measured From KB, 20 Ft. Above Perm. Datum	D.F. ---	
Drilling Measured From KB	G.L. 6481	
Date 7-18-78		
Run No. ONE		
Depth-Driller 5221		
Depth-Logger 5208		
Btm. Log Interval 5207		
Top Log Interval 1735		
Depth intervals between shots - 100'		
Casing-Driller 13-3/8@1735 @ @ @		
Casing-Logger 1735		
Bit Size 12-1/4		
Type Fluid in Hole WATER		
Dens. Visc. --		
pH Fluid Loss -- ml ml ml ml		
Source of Sample --		
Rmf @ Meas. Temp. -- @ -- °F @ °F @ °F @ °F		
Rm @ BHT -- @ -- °F @ °F @ °F @ °F		
Time Since Circ. NA		
Max. Rec. Temp. NA °F °F °F °F		
Equip. Location 7711 FARM, BRUCE-BECK		
Recorded By MOSS-IRVINE		
Witnessed By		

The well name, location and borehole reference data were furnished by the customer. All interpretations are opinions based on inferences from electrical or other measurements and we cannot, and do not, guarantee the accuracy or correctness of any interpretations, and we shall not, except in the case of gross or willful negligence on our part, be liable or responsible for any loss, costs, damages or expenses incurred or sustained by anyone resulting from any interpretation made by one of our officers, agents or employees. These interpretations are also subject to Clause 7 of our General Terms and Conditions as set out in our current Price Schedule.





LOOKING NORTH  
 HORIZ SCALE = 80  
 FT/IN VERT SCALE = 800  
 FT/IN  
 0 FEET  
 -320 FEET WEST  
 -240 FEET WEST  
 -160 FEET WEST  
 -80 FEET WEST  
 0 FEET  
 80 FEET EAST



REF 447

BOTTOM HOLE LOCATION  
 COURSE LENGTH 523.0 FEET  
 COURSE AZIMUTH 239.4 DEG.  
 MEASURED DEPTH 5218.0 FEET  
 TRUE VERTICAL DEPTH 5166.9 FEET  
 DISTANCE SOUTH 266.1 FEET  
 DISTANCE WEST 450.3 FEET

EXACT RADIUS OF CURVATURE METHOD

COMPANY UNION OIL COMPANY OF CALIFORNIA

WELL COVE FORT 31-33

FIELD COVE FORT

COUNTY MILLARD STATE UTAH

Schlumberger