

601058-000
Schlumberger

FOUR - ARM
HIGH RESOLUTION
CONTINUOUS DIPMETER

COUNTY BEAVER
FIELD or LOCATION WILDCAT
WELL CFS 42-7
COMPANY UNION OIL CO. OF CALIF.
WELL COVE FORT-SULPHURDALE UNIT NO. 42-7
FIELD WILDCAT
COUNTY BEAVER STATE UTAH
LOCATION: API Serial No. SE-1/4 NE-1/4 NW-1/4
Sec. 7 Twp. 26S Rge. 6W
Other Services: FDC/CNL-GR DIL, BHC HRT

Permanent Datum: GL, Elev.: 6422
Log Measured From KB, 20 Ft. Above Perm. Datum
Drilling Measured From KB, Elev.: 6442
D.F. 6422
G.L. 6422

Date	3-1-78		
Run No.	ONE		
Depth-Driller	7705		
Depth-Logger	6004		
Btm. Log Interval	6003		
Top Log Interval	3350		
Casing-Driller	9-5/8" 3357		
Casing-Logger	---		
Bit Size	8-3/4		
Type Fluid in Hole	FORMATION WATER		
Fluid Level	---		
Dens. Visc.	---		
pH Fluid Loss	---		
Source of Sample	---		
Rm @ Meas. Temp.	1.2 @ 63 °F	@	@
Rmf @ Meas. Temp.	1.2 @ 63 °F	@	@
Rmc @ Meas. Temp.	---	@	@
Source: Rmf Rmc	MEAS	@	@
Rm @ BHT	.24 @ 338 °F	@	@
Time Since Circ.	5 HOURS		
Max. Rec. Temp.	338 °F		
Equip. Location	7761 FARM		
Recorded By	FAHRENBRUCH AND ENYEART		
Witnessed By	MAIONE		

The well name, location and borehole reference data were furnished by the customer.

REMARKS: Service Order No. 17136 Magnetic Declination 15° E
RECORDER LIGHT INTERMITENT.

Run No.	1	2	3	4	ROLL NO.	INTERVAL
Tool Type						
HDP	D 839					
DDR	TTR 1922					
DPI						
HDM	F 933					
HDE	CB 1709					
HDS	D 955					
Adapter Head						
UG	CG	SAH	X			
5" Film	10" Film	60" Record	X	X		
Analog	Digital		X			
TIME	Circulation Stopped					
	Schl. on Bottom					

TOOL AZIMUTH AND HOLE DIRECTION CALCULATION DEFINITIONS

(DHD) HIGH SIDE OF TOOL = Direction from center of tool to upper side of tool. (AZI) AZIMUTH OF REFERENCE ELECTRODE = Clockwise angle from N to REF.
(N) NORTH = Direction from center of tool to Magnetic North. (RBR) RELATIVE BEARING = Clockwise angle from DHD to REF.
(REF) REFERENCE ELECTRODE = Direction from center of tool to #1 electrode. (AHD) AZIMUTH OF HOLE DEV. (TOOL AXIS) = Clockwise angle from N to DHD.

LOW ANGLE UNIT

EXAMPLE
HDM - Low Angle Unit (0-36°)
AZI (solid curve) = 330°
RBR (dotted curve) = 230°
AHD = AZI - RBR = 330° - 230° = 100°

HIGH ANGLE UNIT

EXAMPLE
HDM - High Angle Unit (0-72°)
AHD (solid curve) = 100°
RBR (dotted curve) = 230°
AZI = AHD + RBR = 100° + 230° = 330°

All interpretations are opinions based on inferences from electrical or other measurements and we cannot, and do not guarantee the accuracy or correctness of any interpretations, and we shall not, except in the case of gross or willful negligence on our part, be liable or responsible for any loss, costs, damages or expenses incurred or sustained by anyone resulting from any interpretation made by any of our officers, agents or employees. These interpretations are also subject to Clause 7 of our General Terms and Conditions as set out in our current Price Schedule.

ORIENTATION

DEPTHS

AZIMUTH

RELATIVE BEARING

DEVIATION

CORRELATION CURVES

← CONDUCTIVITY

NO. 1

NO. 2

NO. 3

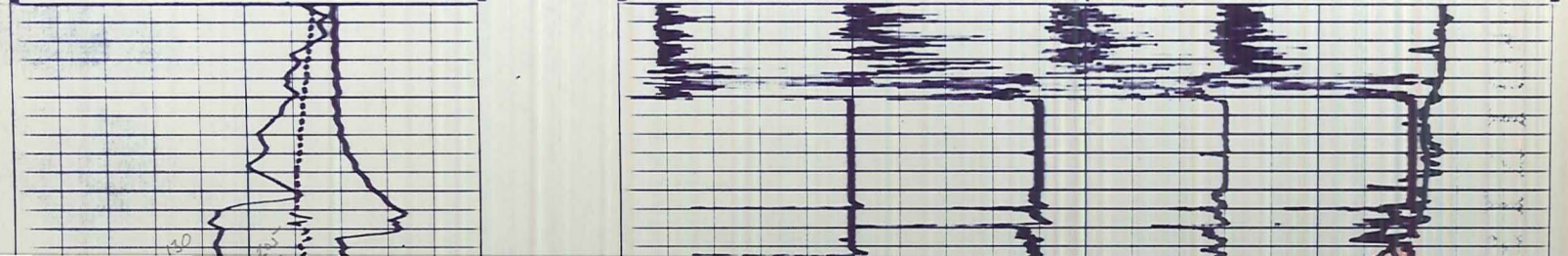
NO. 4

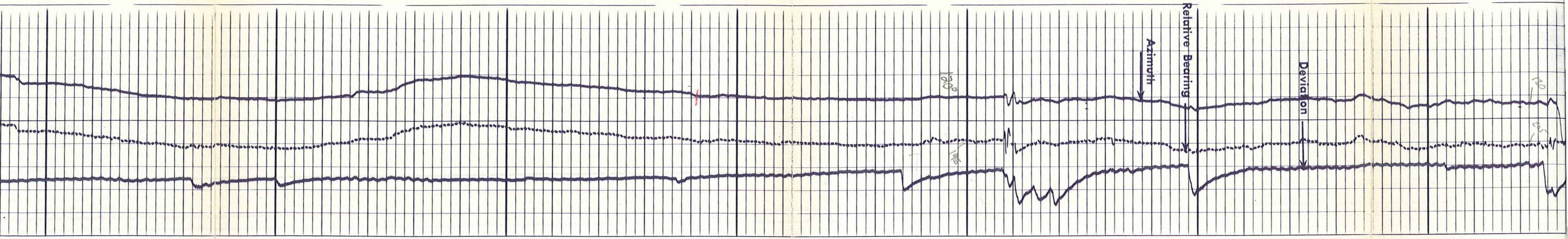
4 ARM CALIPER
1 - 3 CALIPER

2 - 4 CALIPER

18" 16" 14" 12" 10" 8" 6"

NOTE:
DIGITAL DIPMETERS
END OF RECORD GAP IS ON DEVIATION CURVE.
LONG SPACING MARK IS ON CALIPER 2 - 4.



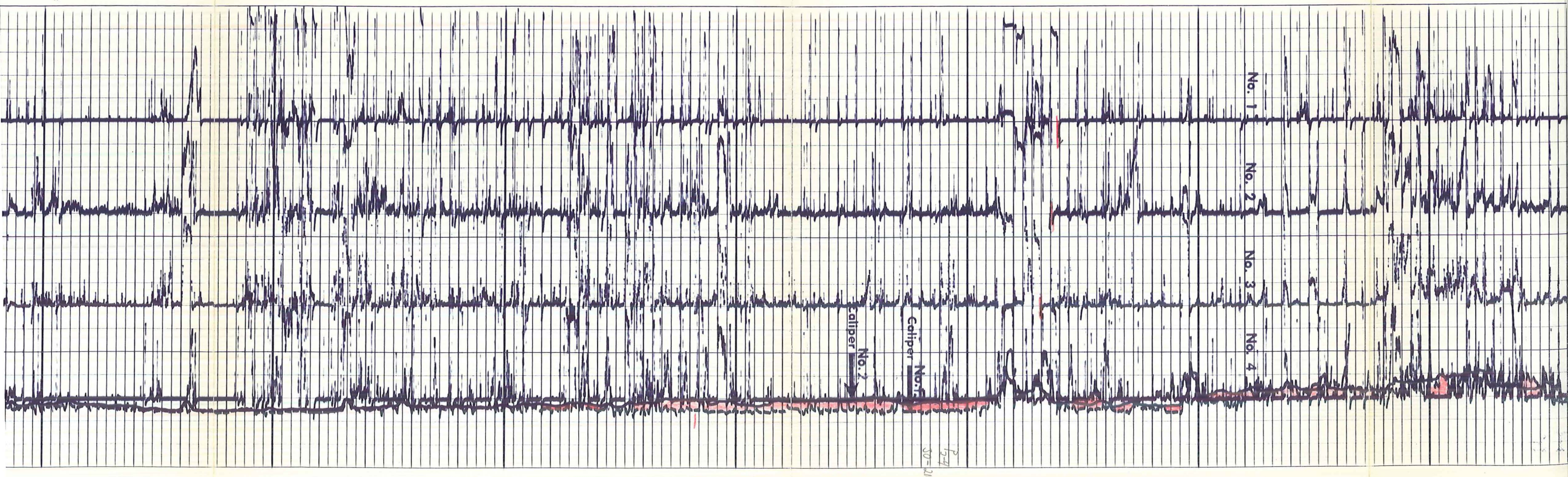


3700

3600

3500

3400



No. 1

No. 2

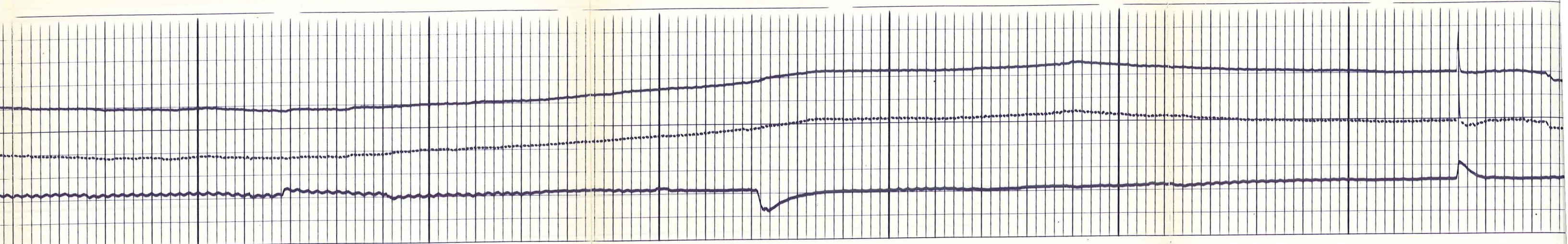
No. 3

No. 4

Coltiper No. 2

Coltiper No. 1

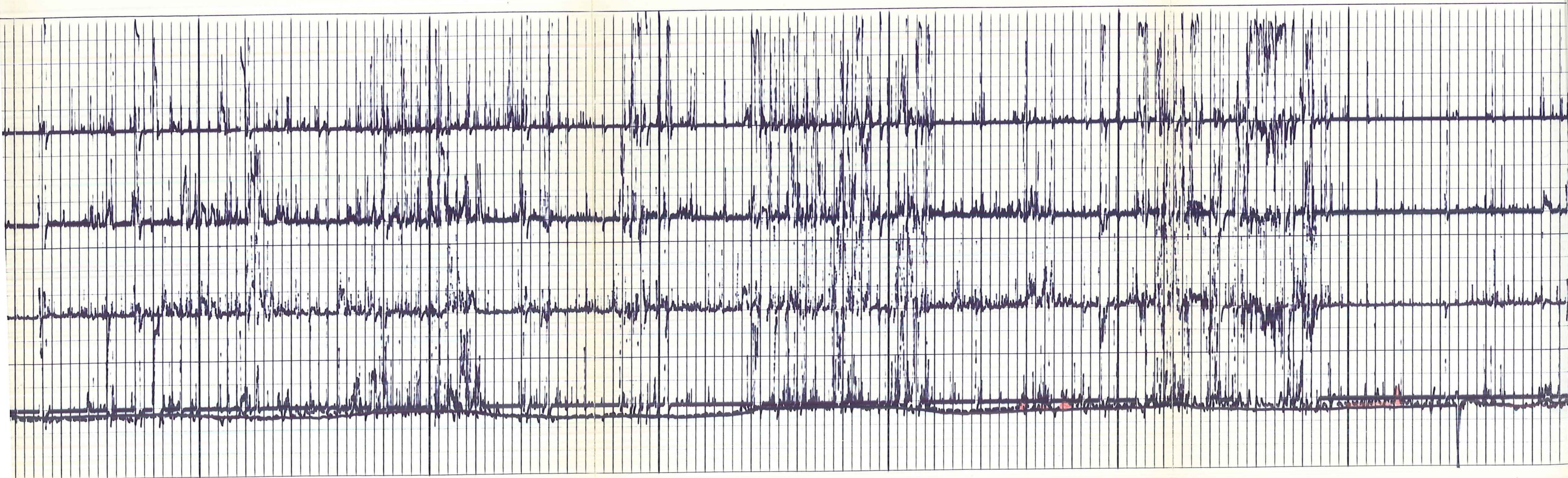
5-4
50-210

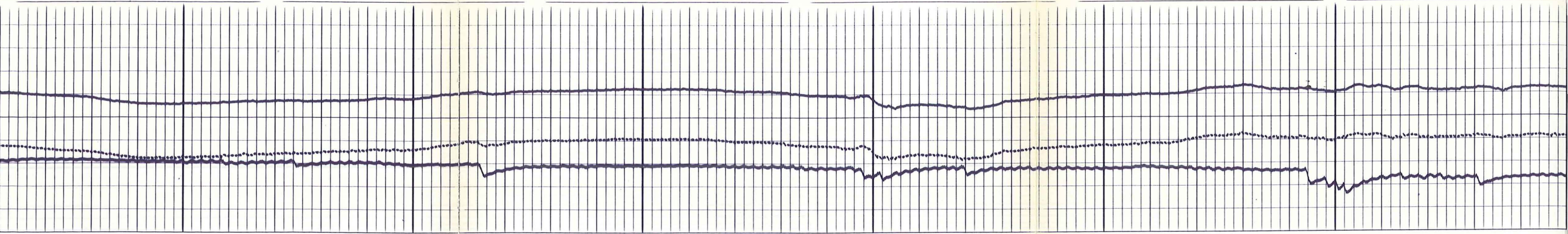


4000

3900

3800

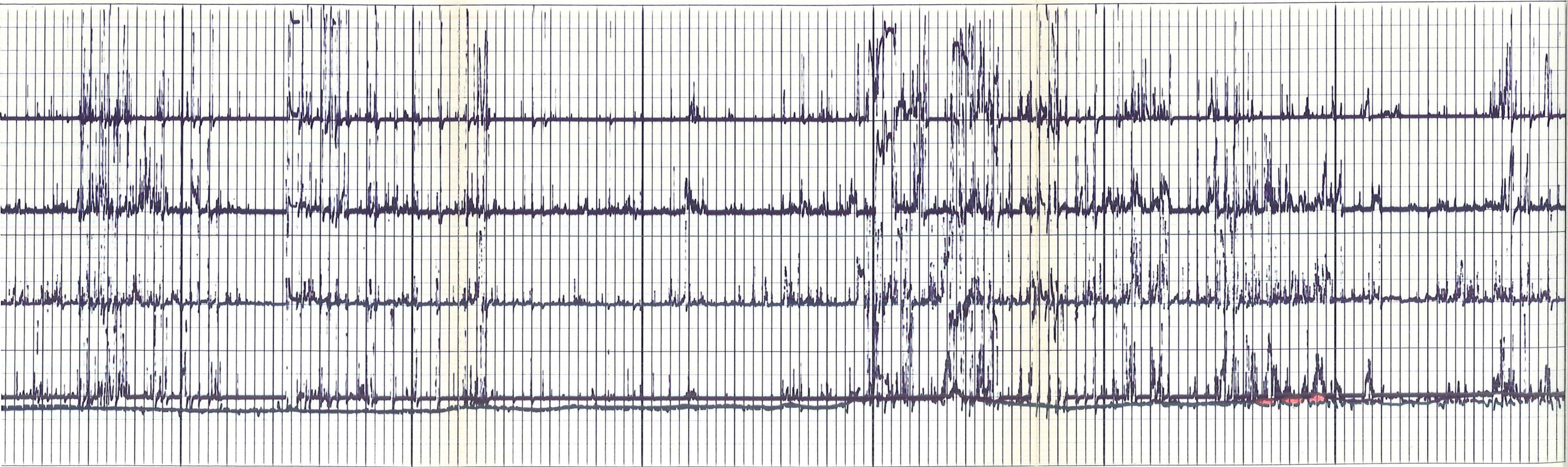


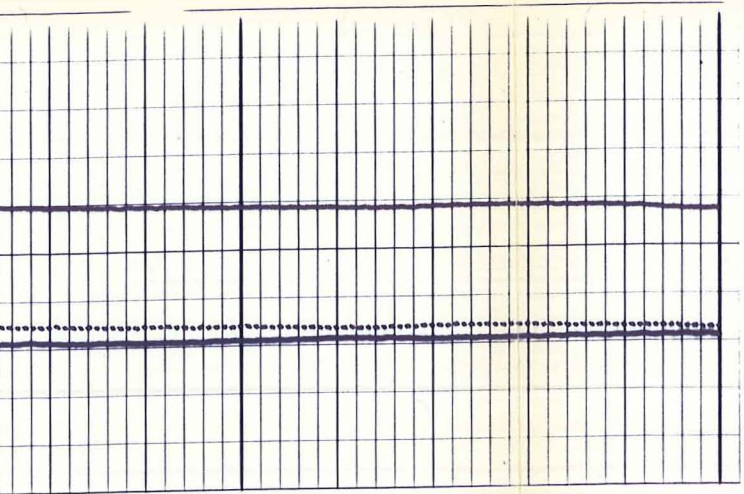


4300

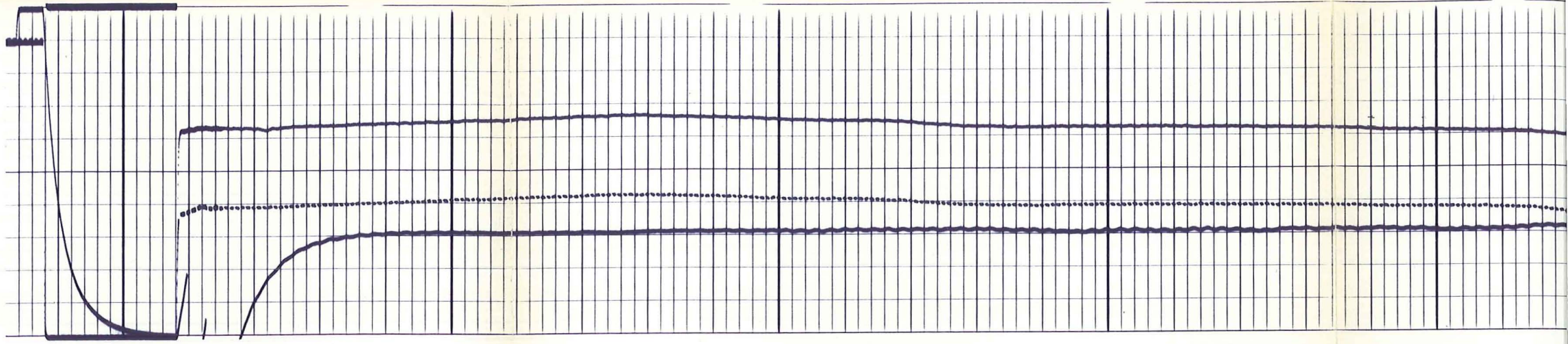
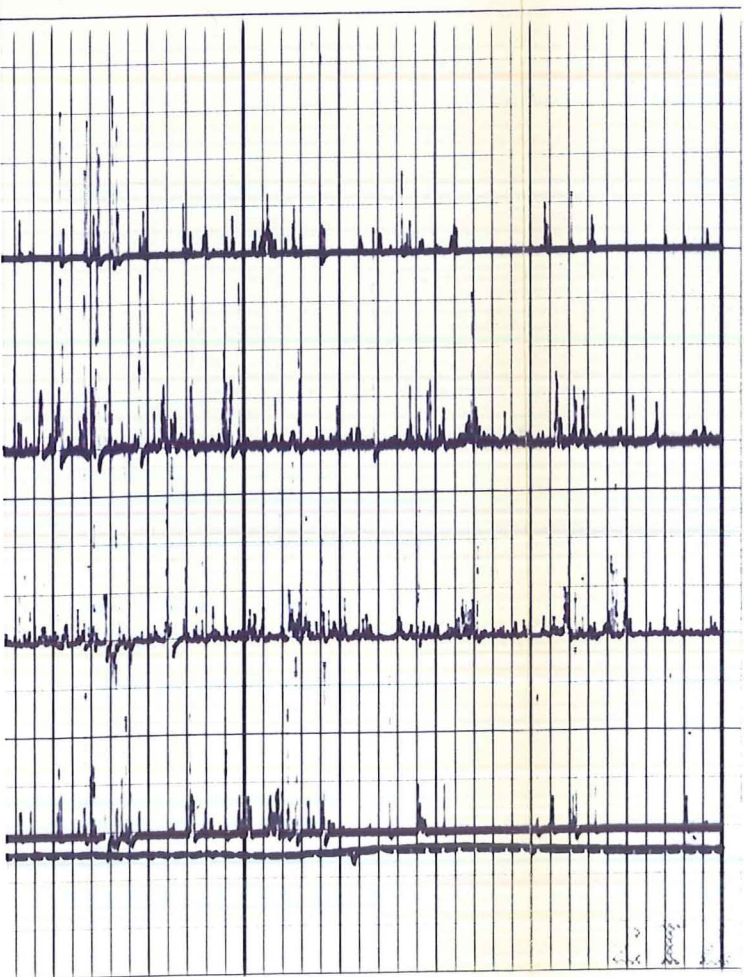
4200

4100

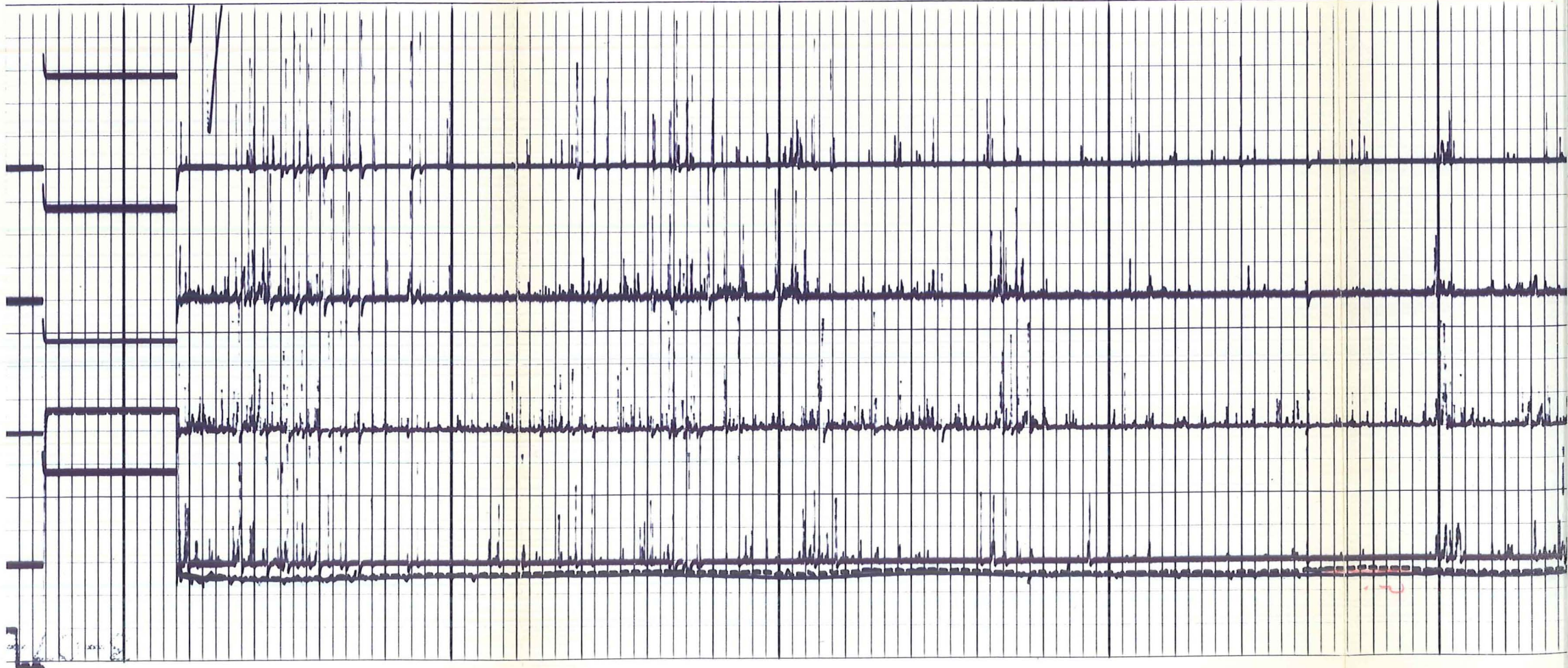




4500

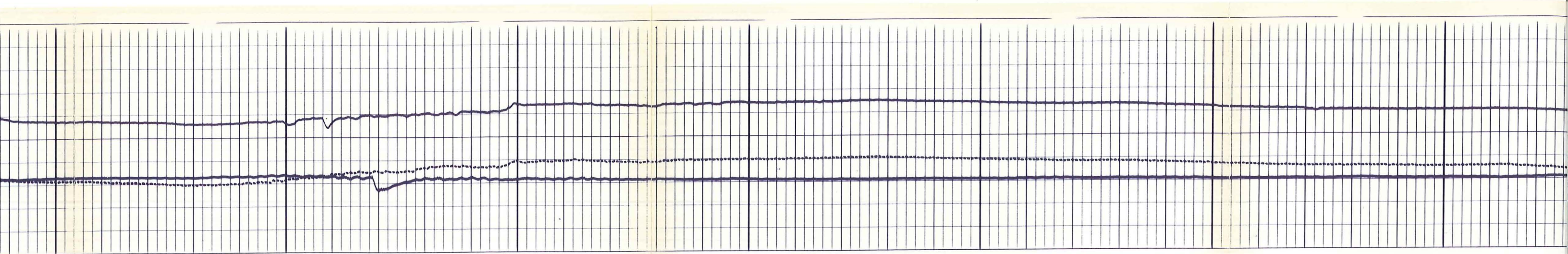


4600



4500

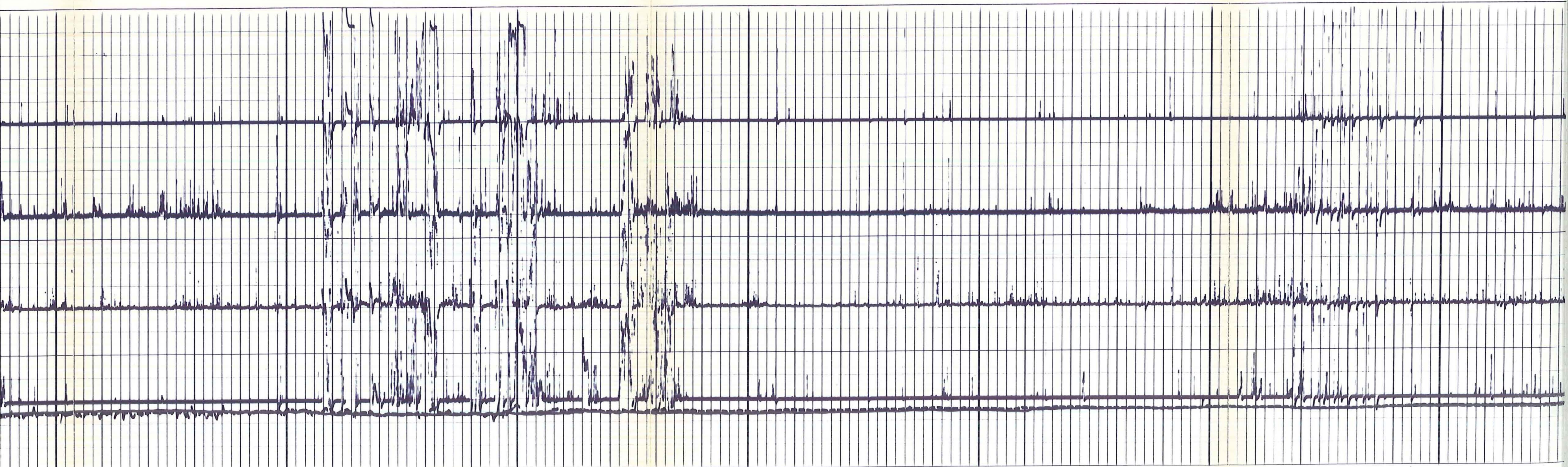
4400

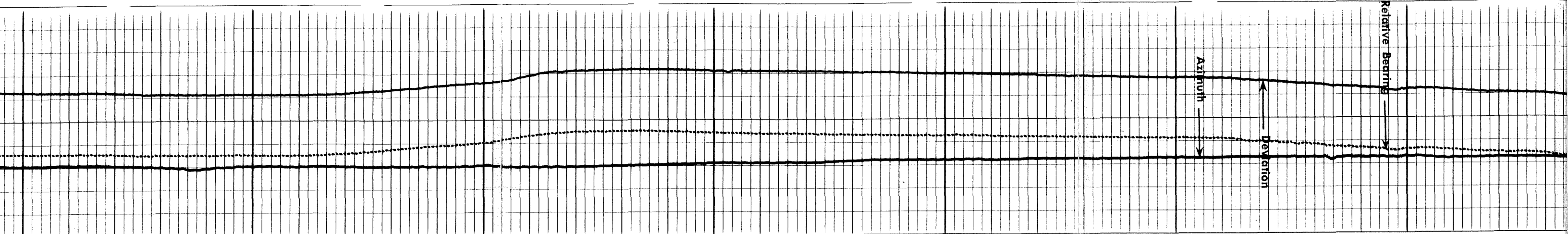


4800

4700

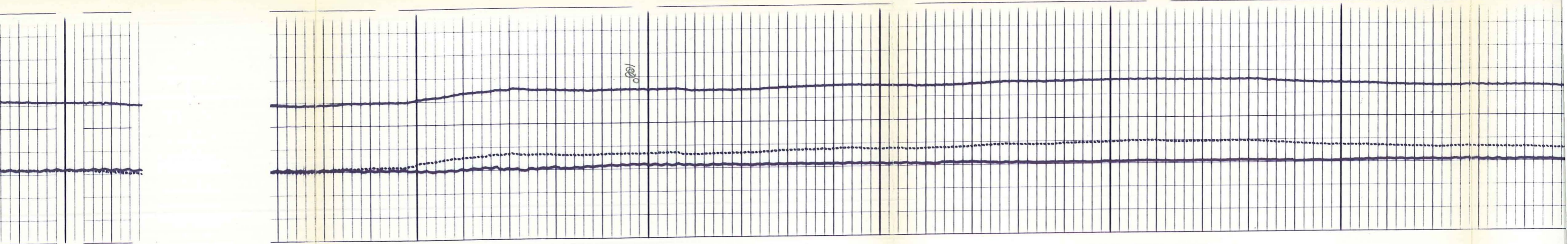
4600





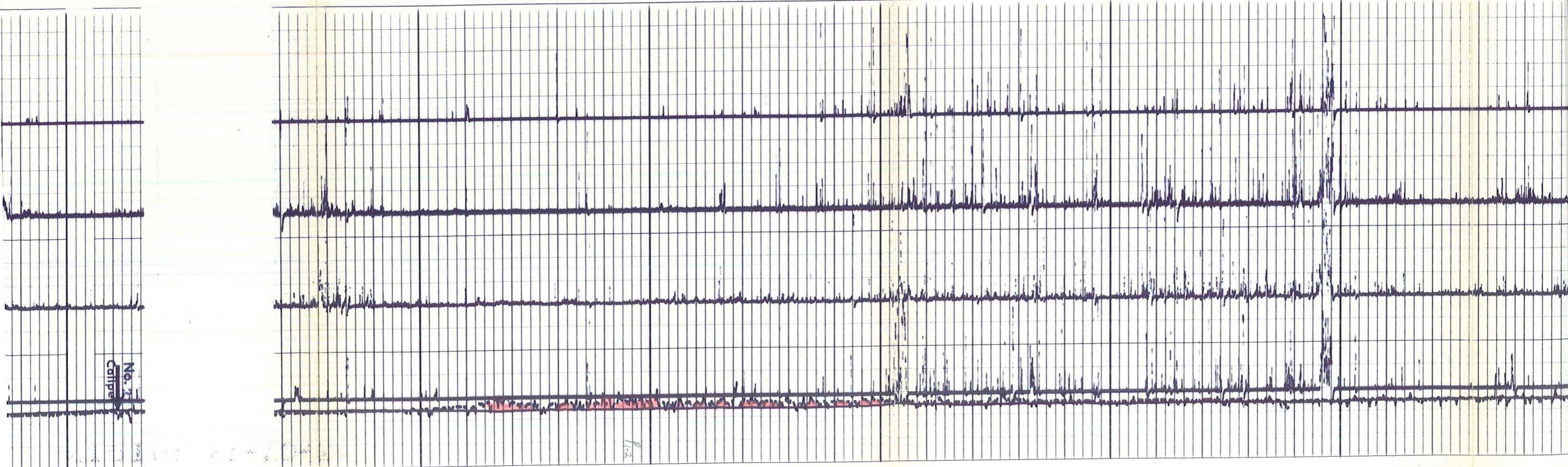
5200 5100 5000 4900





100

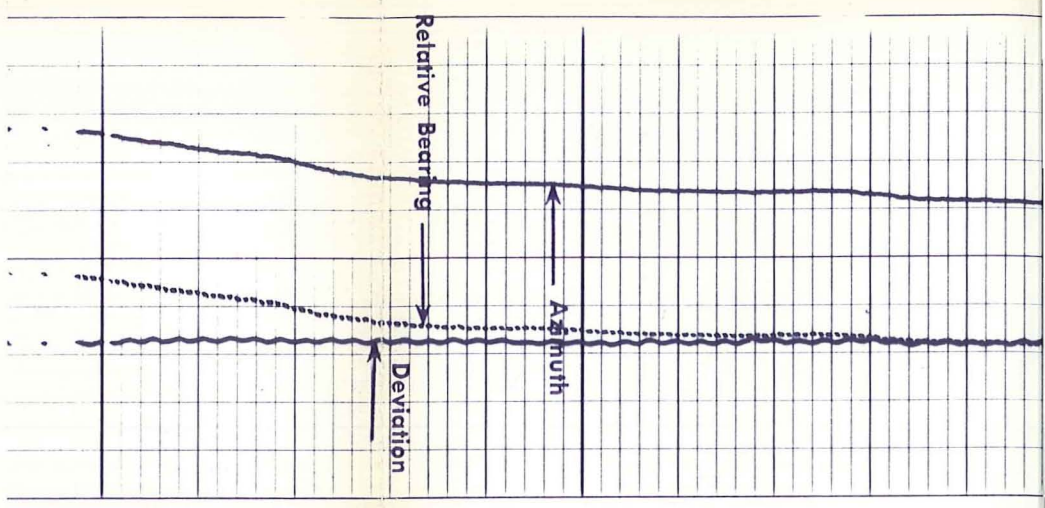
5600 5400 5300 00



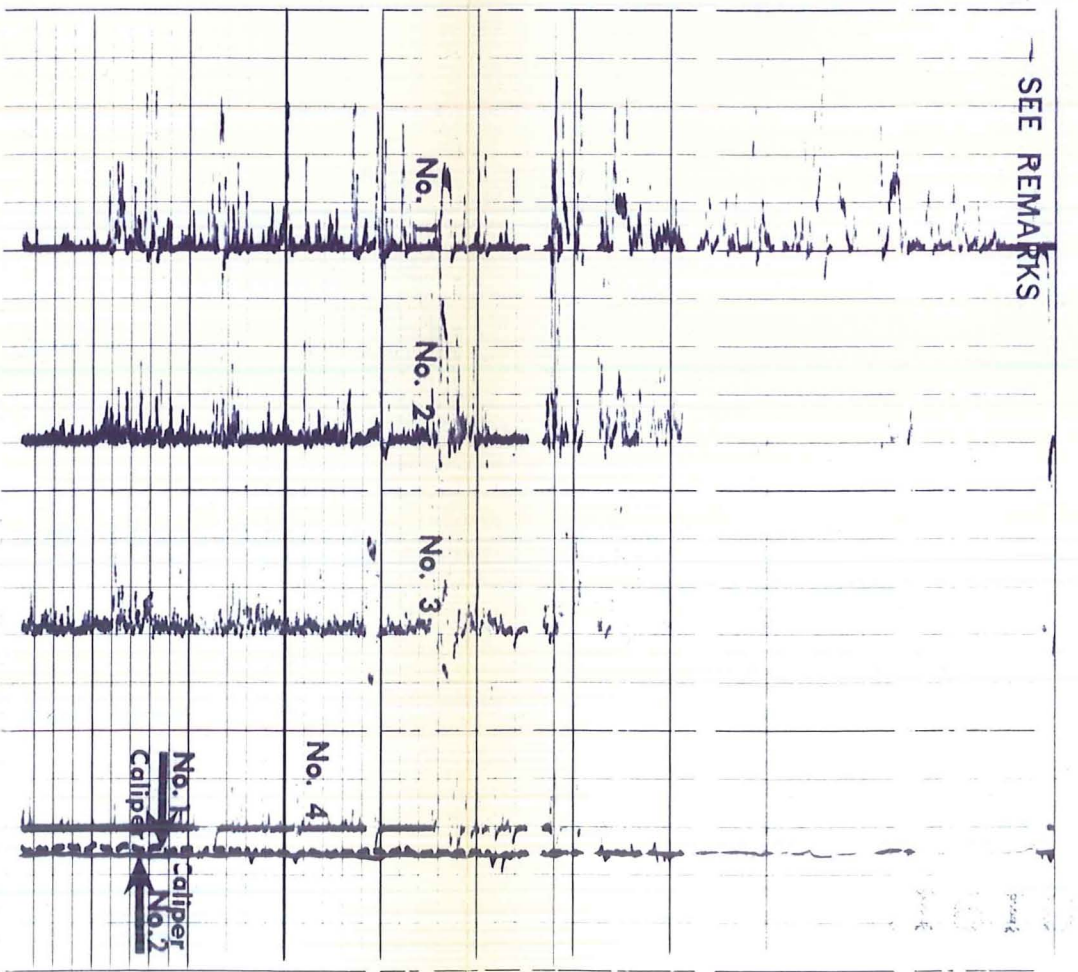
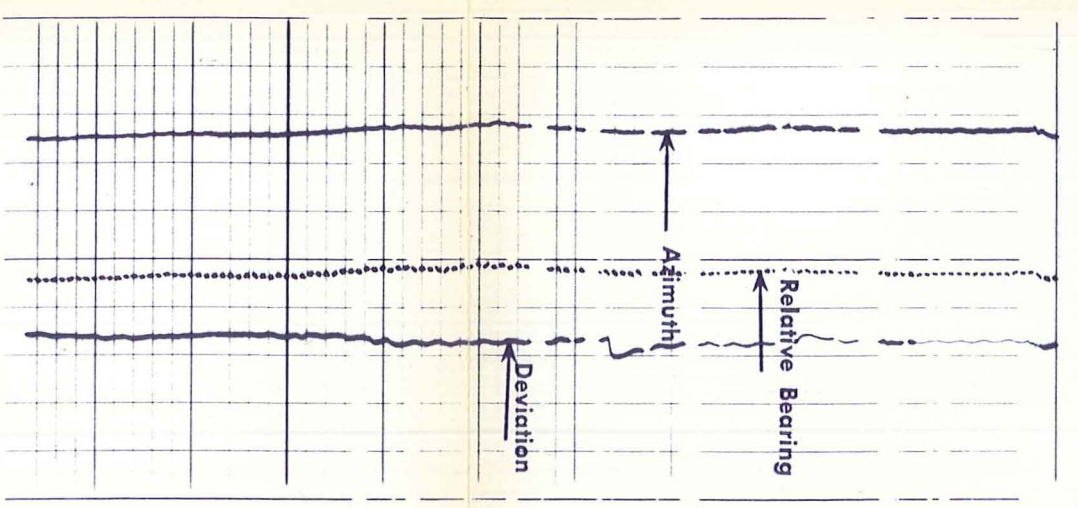
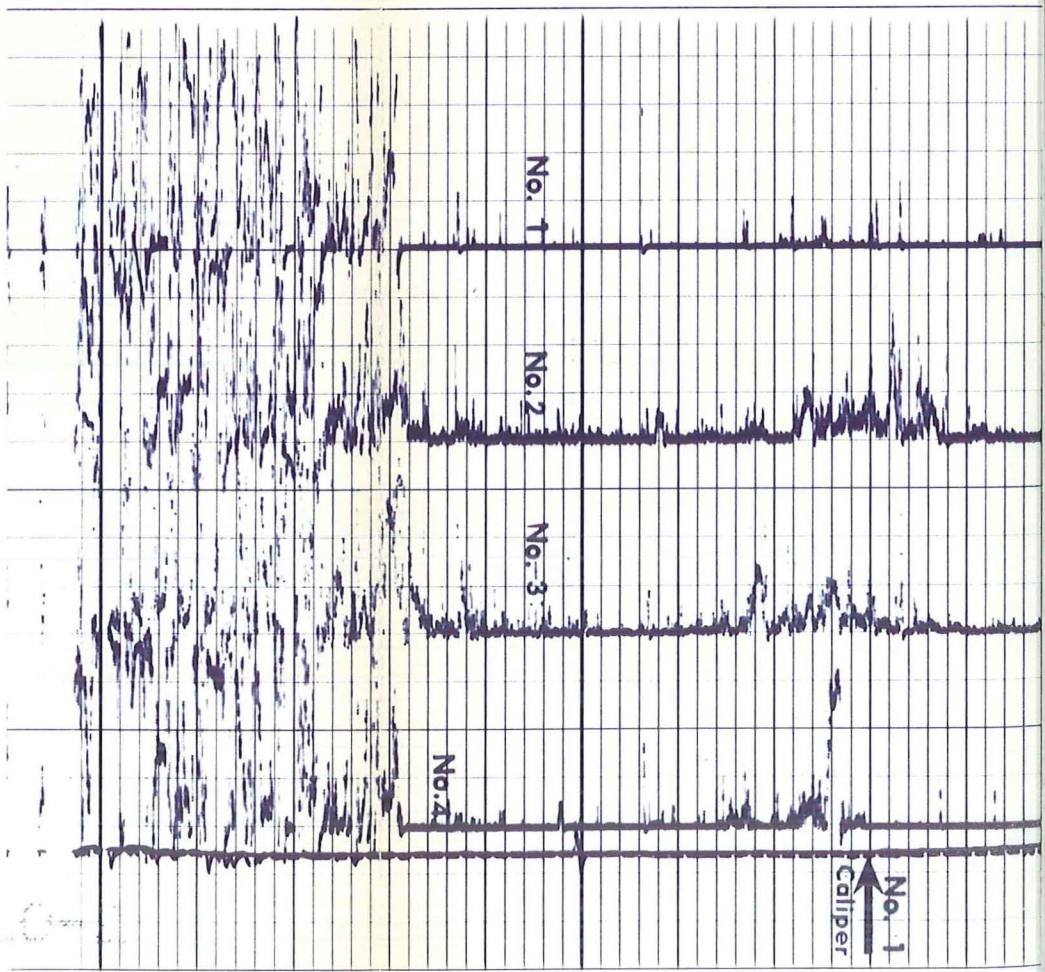
100

100-280°

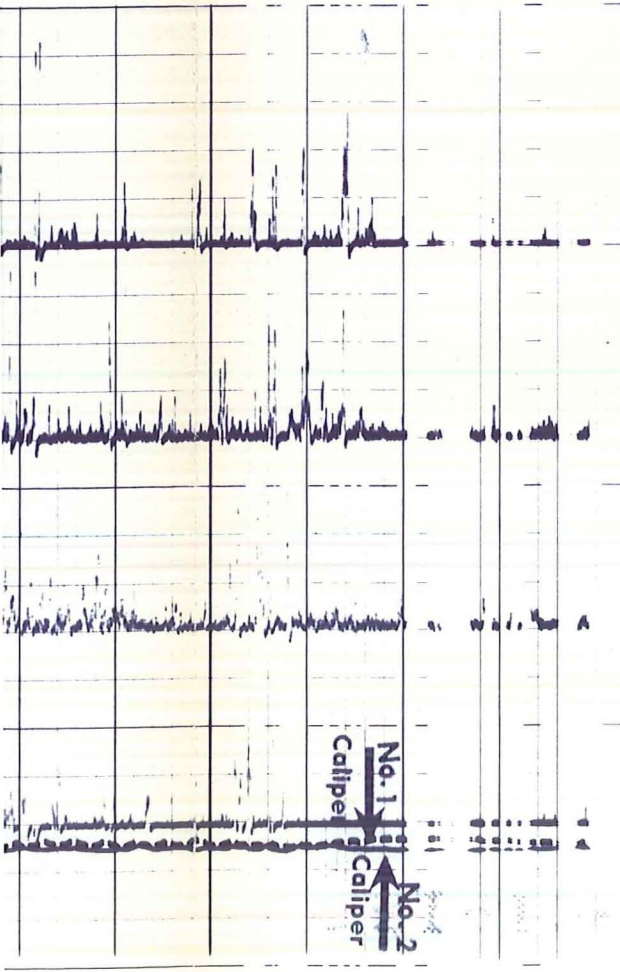
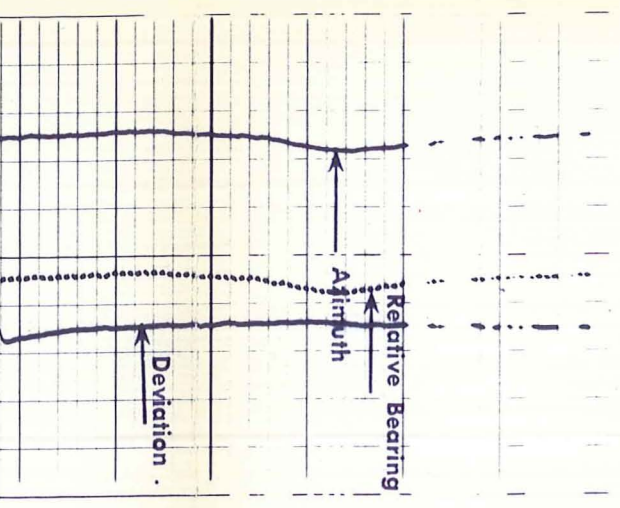
No. 17
Catheter

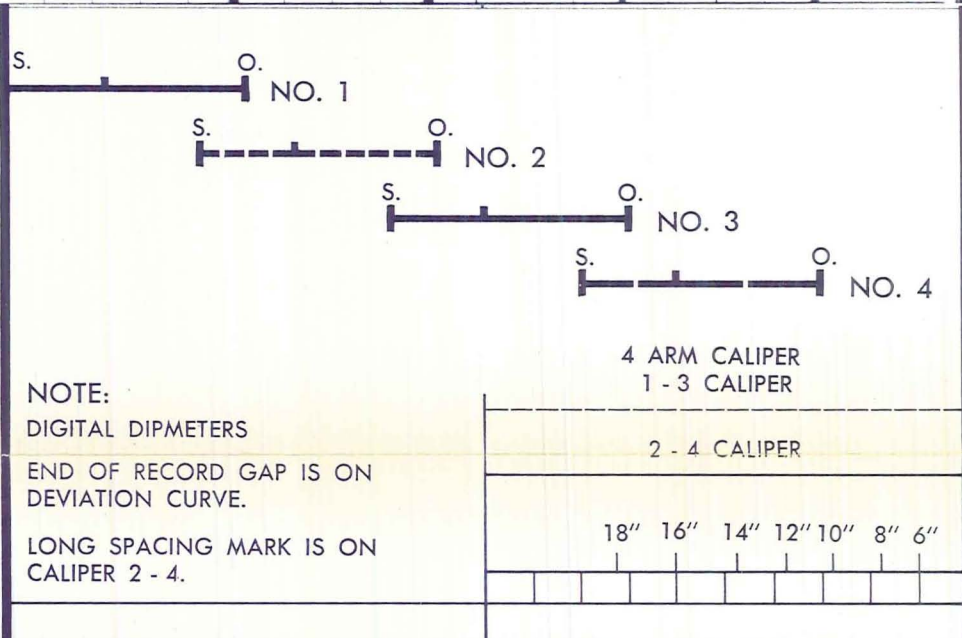
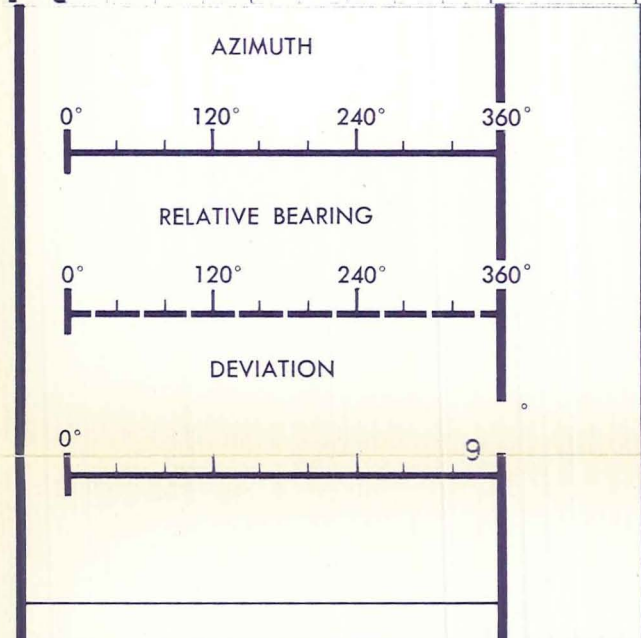
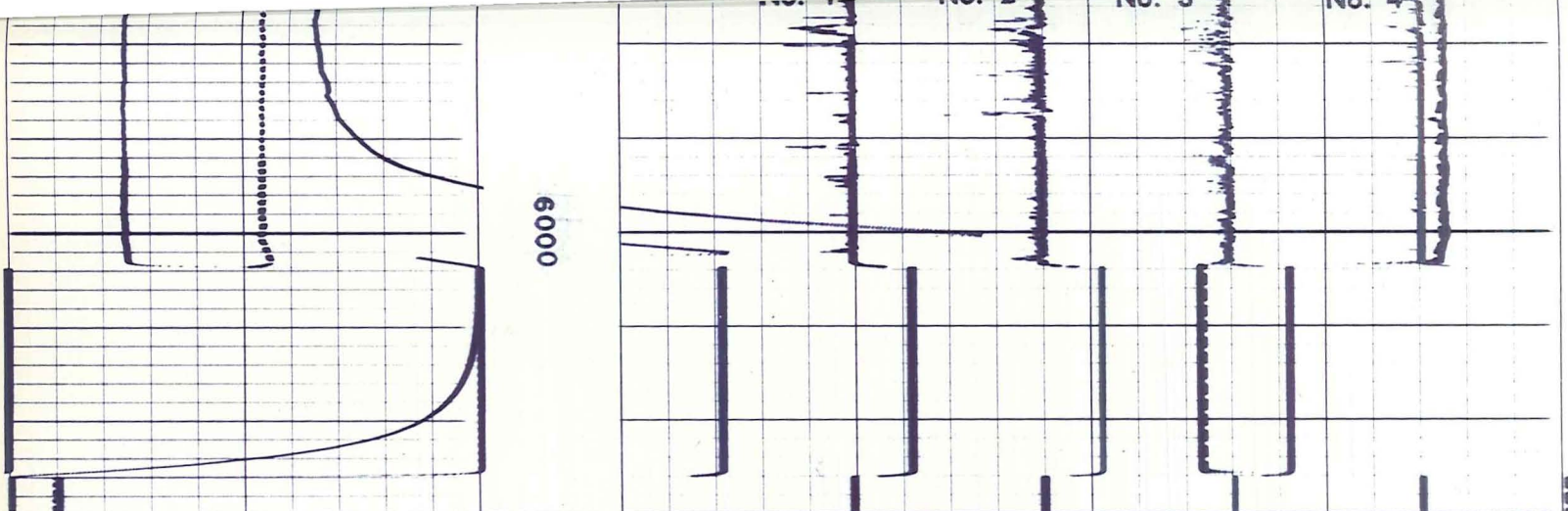


5700

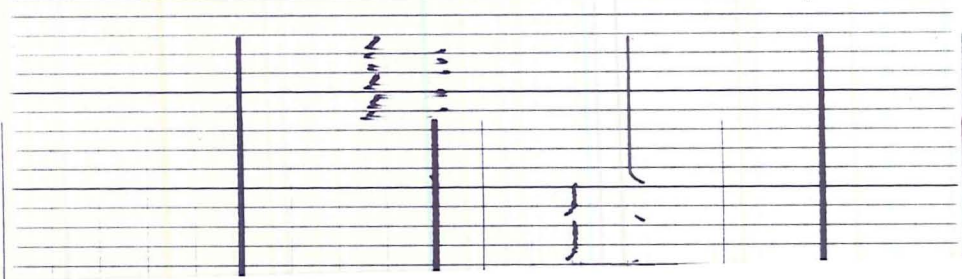
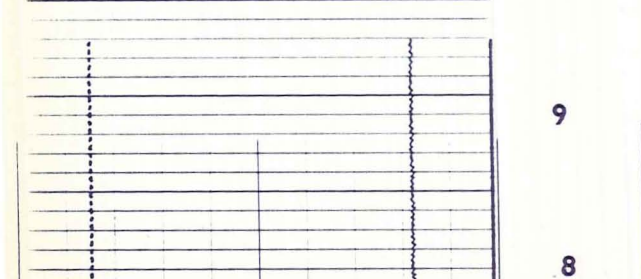
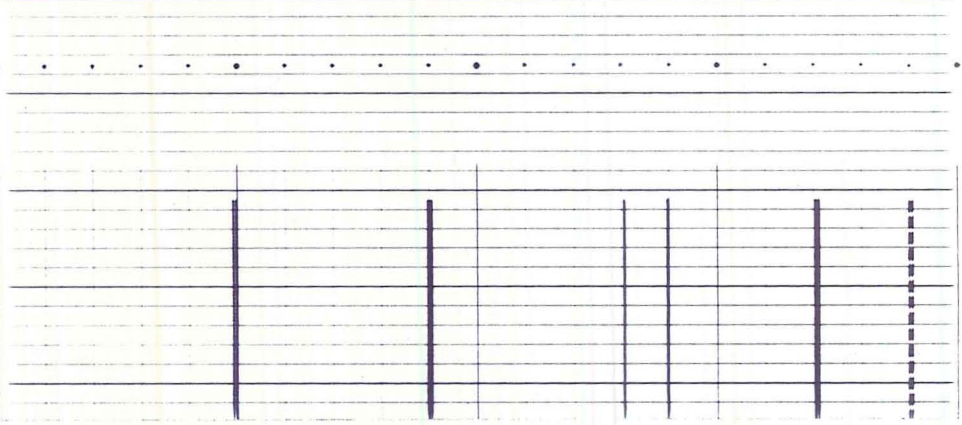
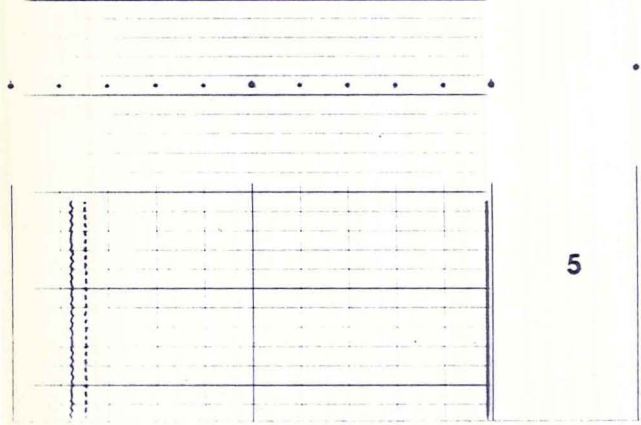
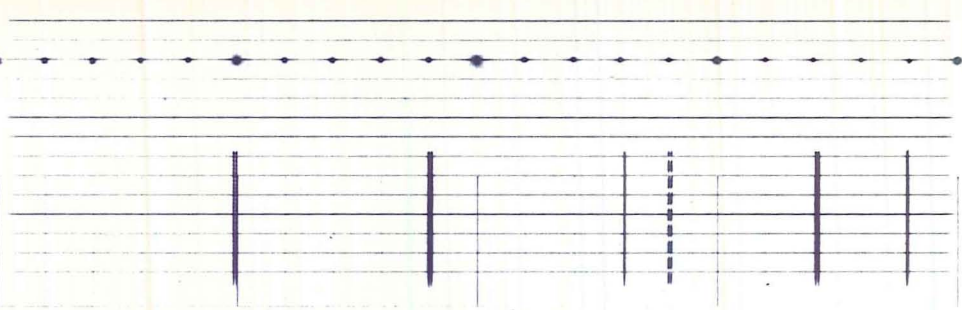
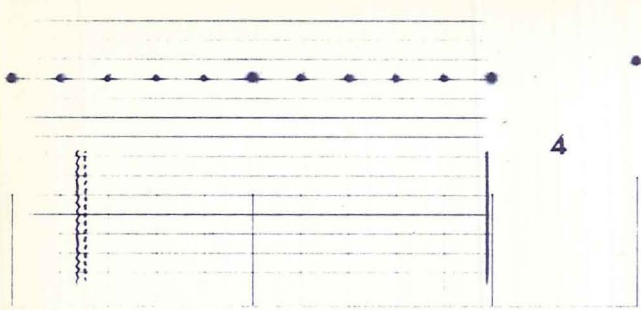
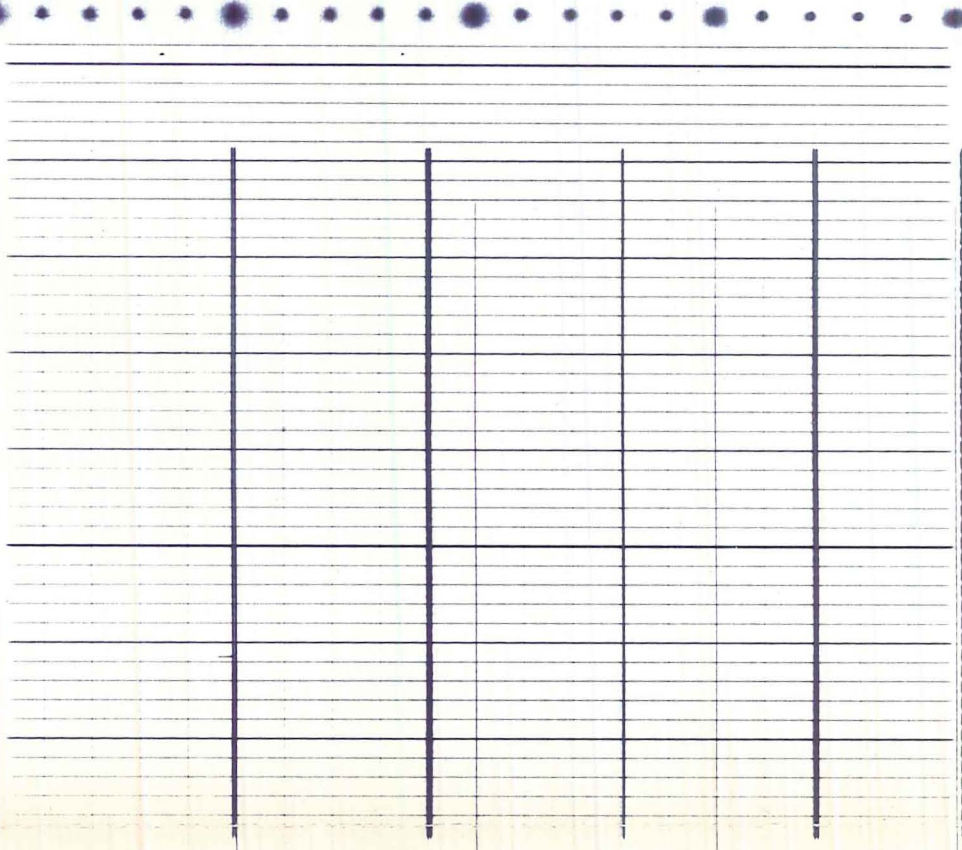
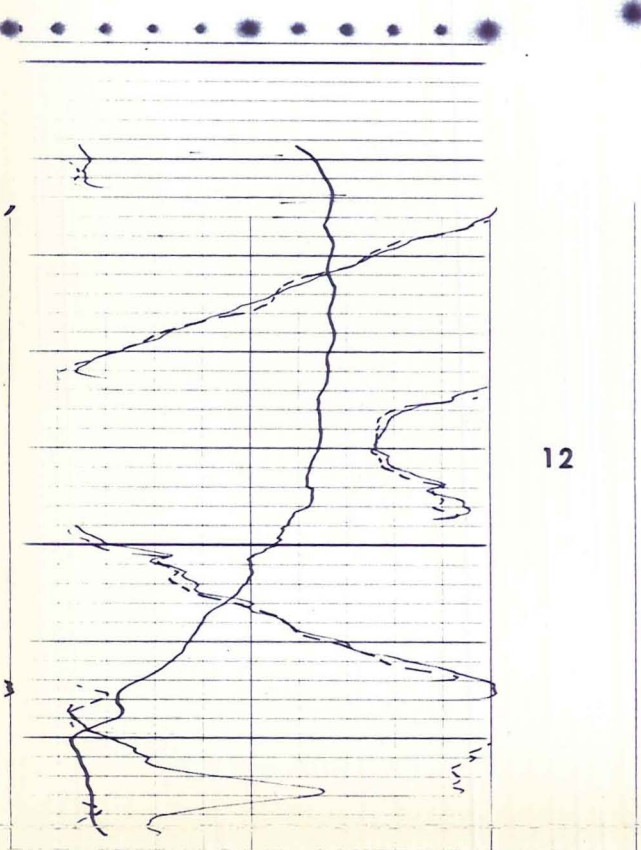


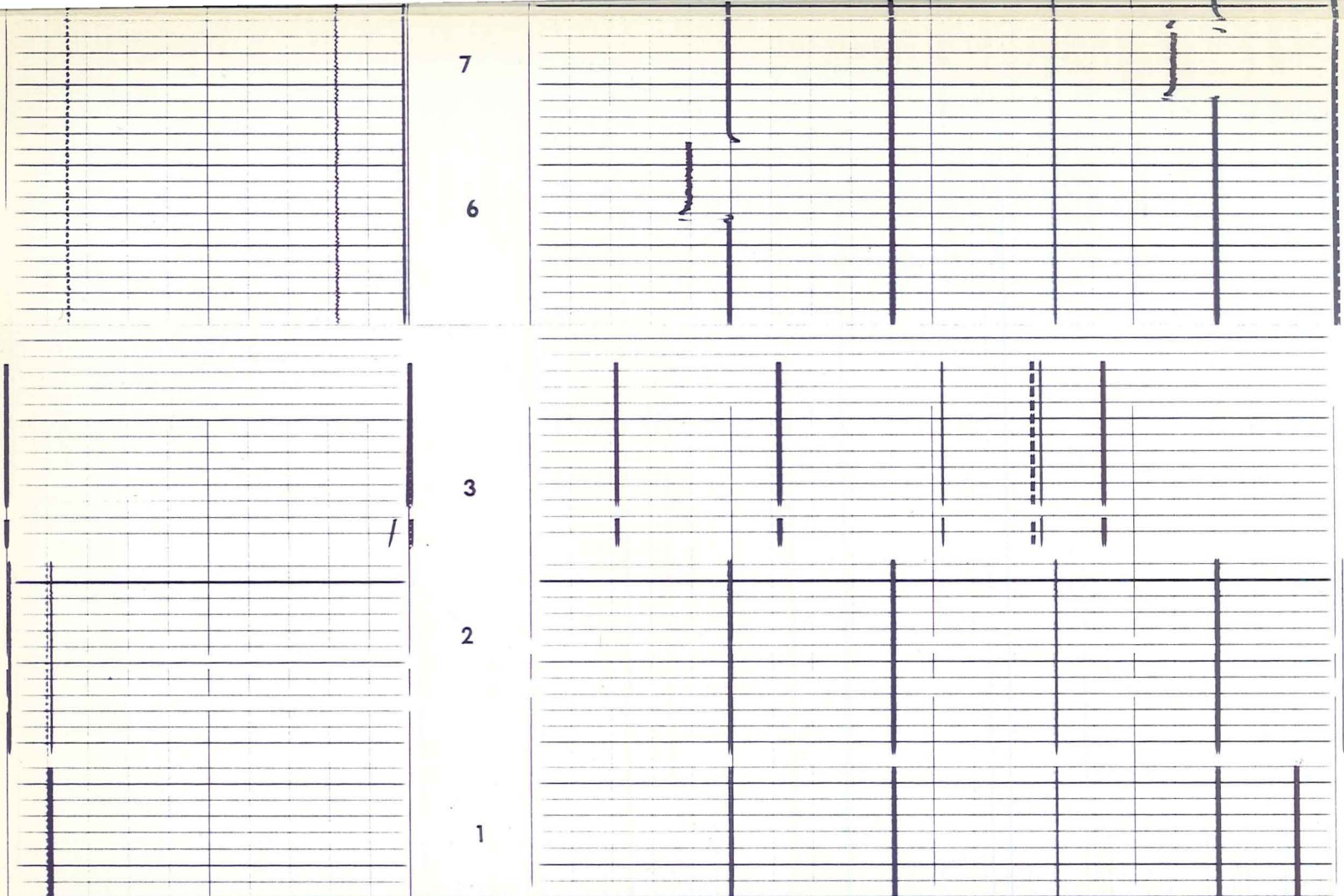
SEE REMARKS





ORIENTATION	DEPTH	CORRELATION CURVES ← CONDUCTIVITY
--------------------	--------------	---





HIGH RESOLUTION DIPMETER CALIBRATION CODING

1. MECHANICAL ZERO
2. ELECTRICAL ZERO
3. FULL SCALE ADJUST
4. CALIPER ADJUST AT 6" AND 16" CALIPER 1-3 IS CODED
5. CALIPER ADJUST AT 6" AND 16" CALIPER 2-4 IS SOLID
6. PAD #1 RESPONSE CHECK
7. PAD #2 RESPONSE CHECK
8. PAD #3 RESPONSE CHECK
9. PAD #4 RESPONSE CHECK
10. SONDE HANGING VERTICALLY
11. TOOL AND PAD #1 POINTED NORTH
12. TOOL ROTATING

COMPANY UNION OIL CO. OF CALIF.

WELL COVE FORT-SULPHURDALE UNIT NO. 42-7 ROLL NO. _____

FIELD WYLCAT DEPTH INTERVAL THIS ROLL

COUNTY BEAVER STATE UTAH From _____ To _____