

601074



AREA
NM
Sand
PO-GRI
ValCal

UNITED STATES
DEPARTMENT OF THE INTERIOR

GEOLOGICAL SURVEY
Conservation Division, MS-92
345 Middlefield Road
Menlo Park, CA 94025



SEP 2 1981

UNIVERSITY OF UTAH
RESEARCH INSTITUTE
EARTH SCIENCE LAB.

Memorandum

To: Interested Parties

From: Acting Deputy Conservation Manager, Geothermal

Subject: Plan of Operation, GRI Operator Corporation, Federal Lease
NM-30809, Valles Caldera KGRA, Sandoval County, New Mexico
Ref: 2403-01 NM-30809 (POO for EA #186-81)

GRI Operator Corporation has submitted a Plan of Operation in accordance with 30 CFR 270.34 to drill and flow test four (4) 2440 m geothermal exploration wells. The purpose of the proposed operation is to establish the boundaries of a geothermal system at Valles Caldera and determine the productivity characteristics of its reservoir. A map of the area of operation is attached.

An Environmental Assessment (EA #186-81) will be prepared by the Office of the Deputy Conservation Manager for Geothermal for the proposed action.

You are invited to participate in a field inspection for this proposed project. Participants are asked to meet on September 16, 1981 at 9 a.m. at the Jemez Springs District Ranger Office, Jemez, New Mexico, Tel: (505) 892-3535.

We urge you to send written commentary and will appreciate hearing from you even if you are of the opinion that the existing regulations, lease terms, and operational orders provide adequate environmental protection.

All comments concerning the proposed action should be received no later than September 25, 1981 by:

Deputy Conservation Manager, Geothermal
U.S. Geological Survey
Conservation Division
345 Middlefield Road - MS-92
Menlo Park, CA 94025
Attn: Richard Hoops
(415) 323-8111, ext. 2848; FTS 467-2848

All comments will be given serious consideration in the preparation of the Environmental Assessment and any subsequent conditions of approval.

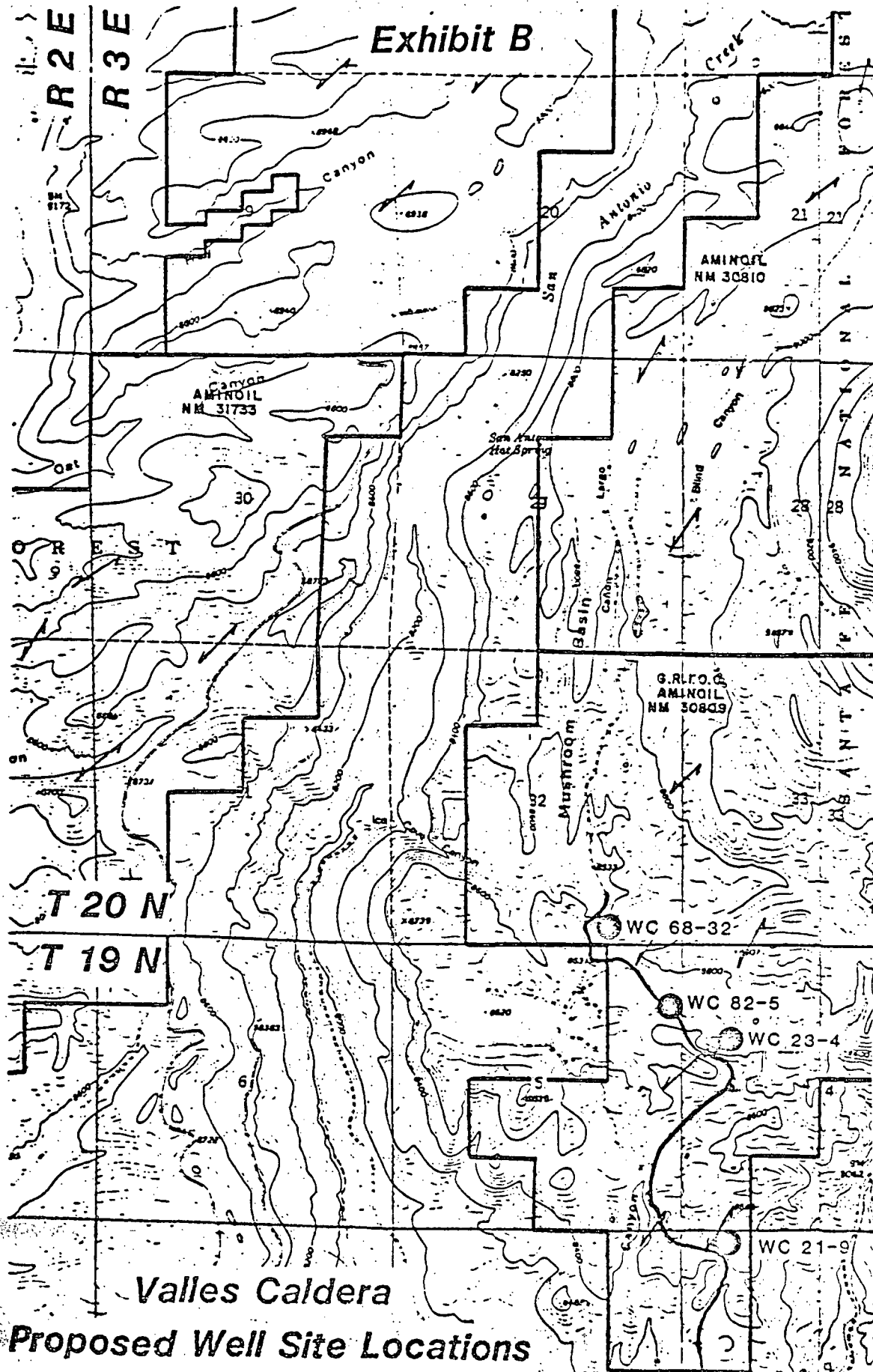
The Office of the Deputy Conservation Manager for Geothermal will routinely distribute copies of the completed final EA to the surface managing agency, the lessee, the Geothermal Advisory Panel (GEAP) and the U.S. Fish and Wildlife Service. Other interested parties may receive a copy of the final EA upon request. Copies of the EA will also be available for inspection during normal business hours at the Office of the Deputy Conservation Manager for Geothermal and the Jemez Springs District Ranger Office, Jemez, New Mexico.



William F. Isherwood

Enclosure

Exhibit B



Valles Caldera
Proposed Well Site Locations