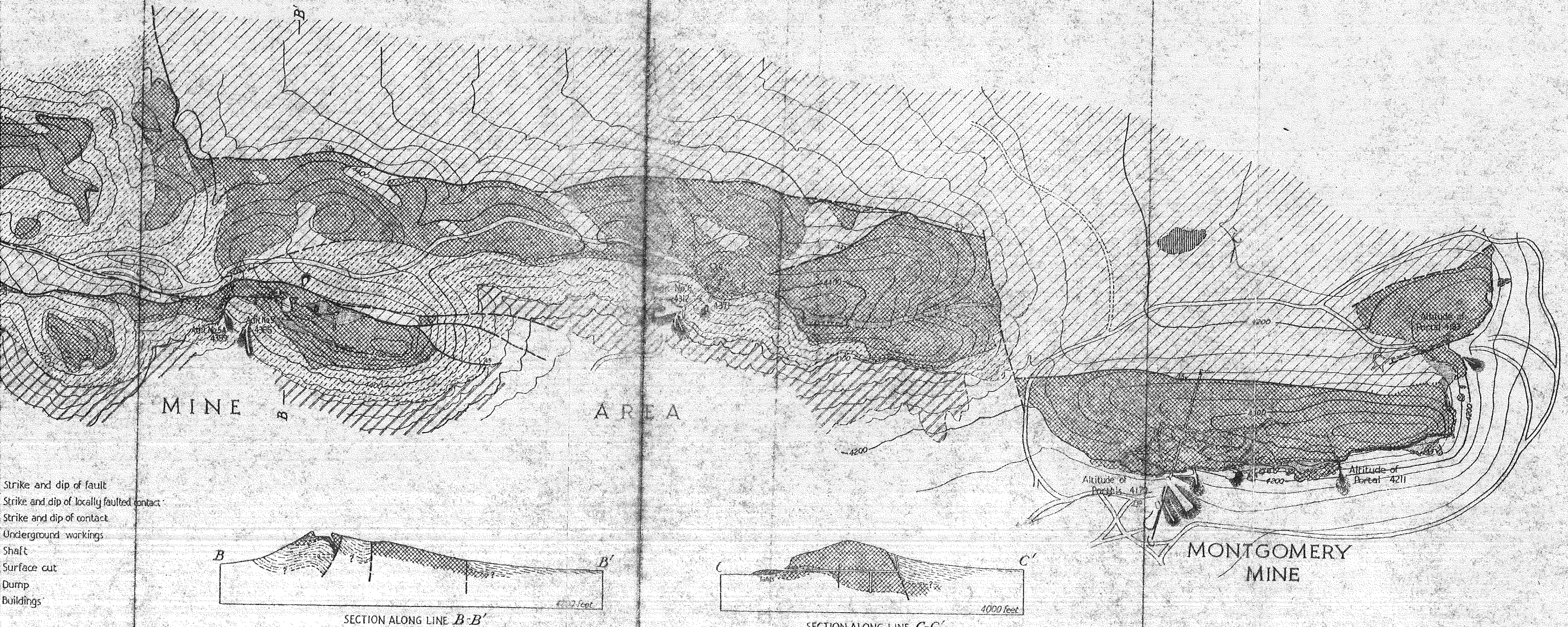
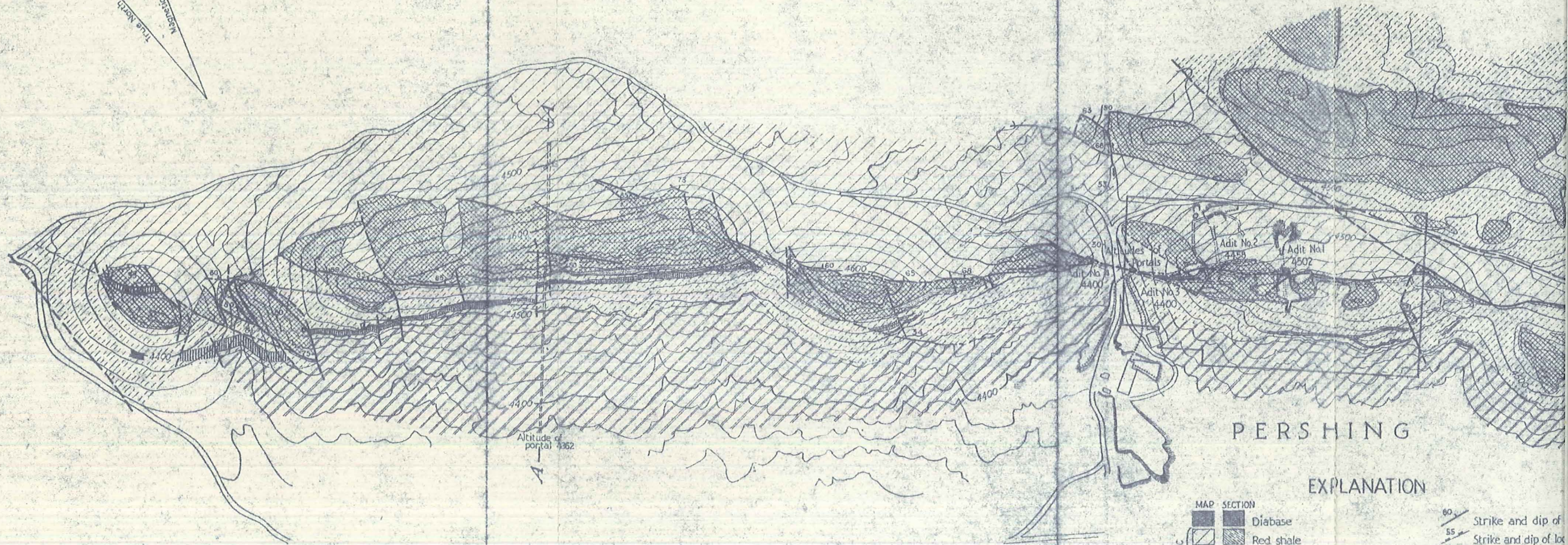
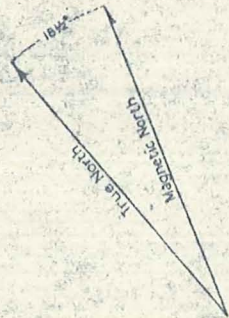


P.1 9/24/44
 GEOLOGIC AND TOPOGRAPHIC MAP AND SECTIONS OF THE
AND MONTGOMERY QUICKSILVER MINE AREA
 PERSHING COUNTY NEVADA
 and topography by E. H. Bailey, P. F. Fox, D. A. Phoenix, and C. M. Swinney
 Geological Survey





PERSHING
EXPLANATION

MAP	SECTION	
		Diabase
		Red shale
		Conglomeratic dolomite
		Buff sandstone
		Black sandstone
		Variiegated shale
		Area shown on block diagram

	60°	Strike and dip of
	55°	Strike and dip of lo
	63°	Strike and dip of co
		Underground wor
		Shaft
		Surface cut
		Dump
		Buildings

Scale
 100 0 200 400 600 800 1000 feet
 Contour interval 20 feet - Datum assumed

