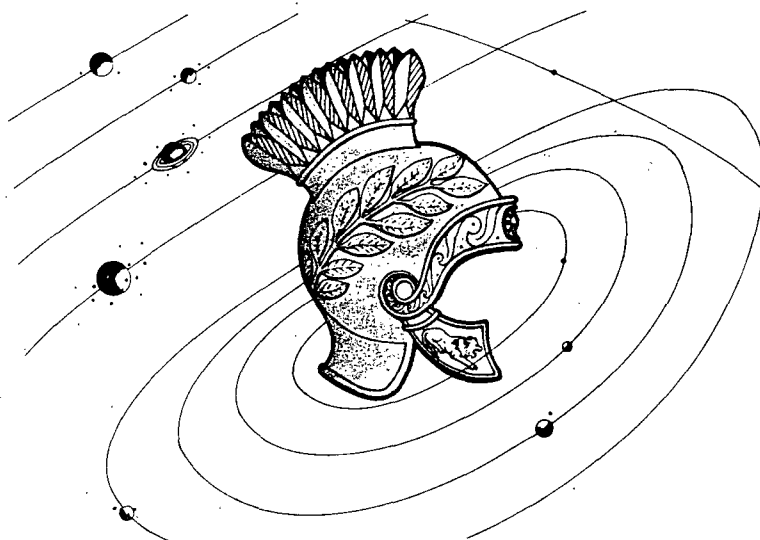


GL 02309



BEOVAWE CROSS SECTIONS

for

CHEVRON OIL COMPANY

SENTURION SCIENCES, INC.

TULSA, U.S.A.

BEOWAWE AREA
GROUNDNOISE CROSS SECTION A-A'
 1-15 Hz

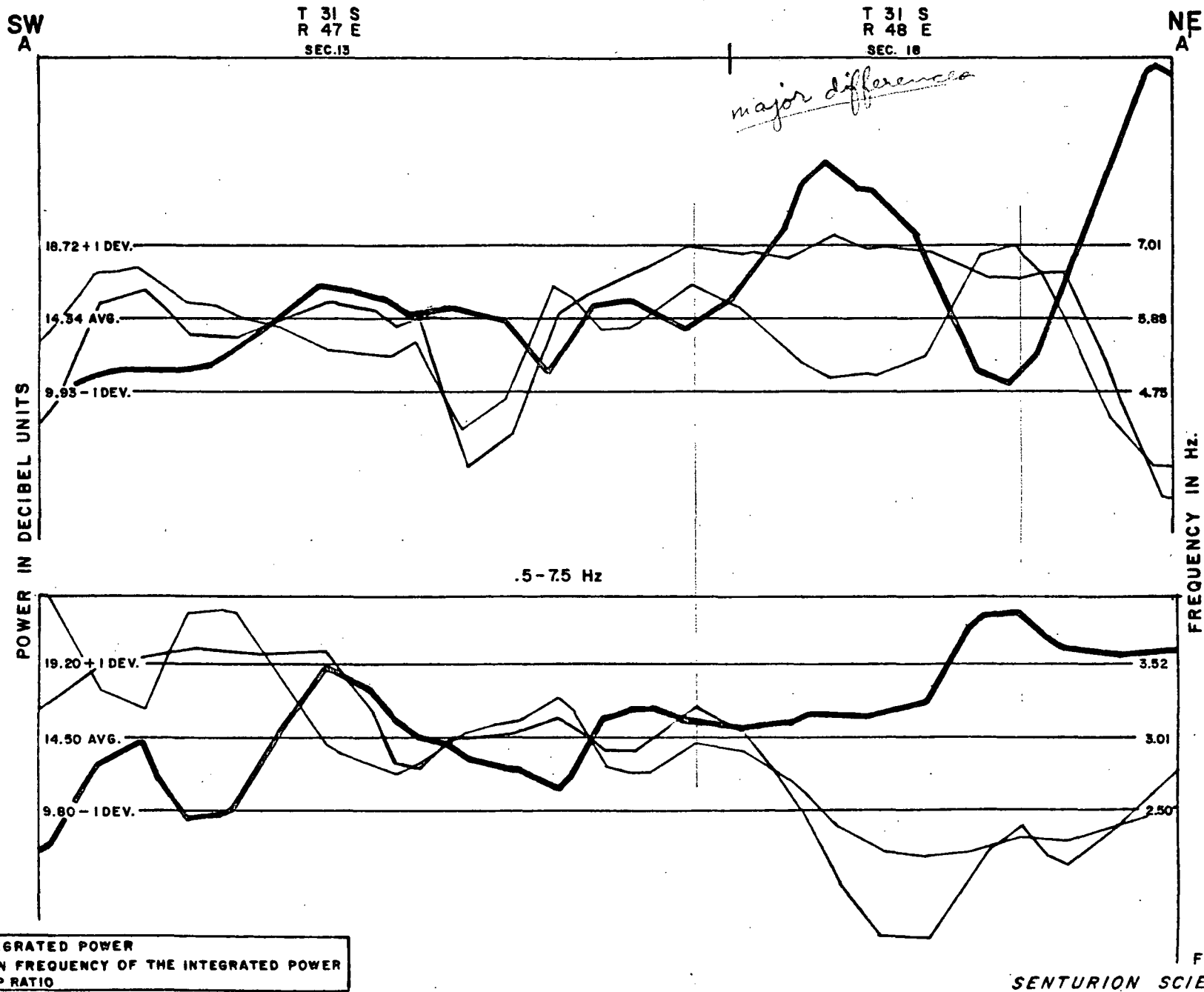


FIGURE 8

BEOWAWE AREA

GROUNDNOISE CROSS SECTION B-B'

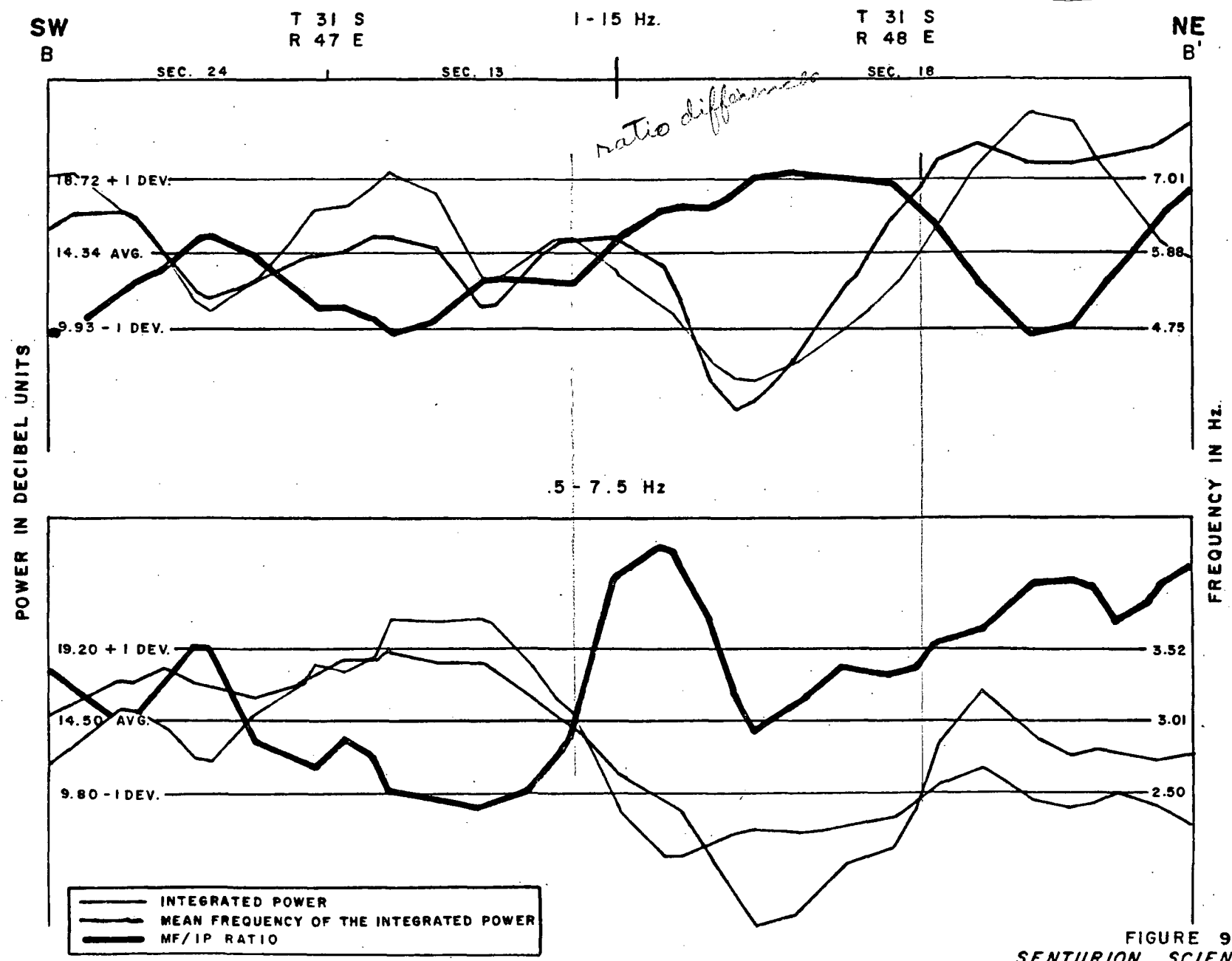
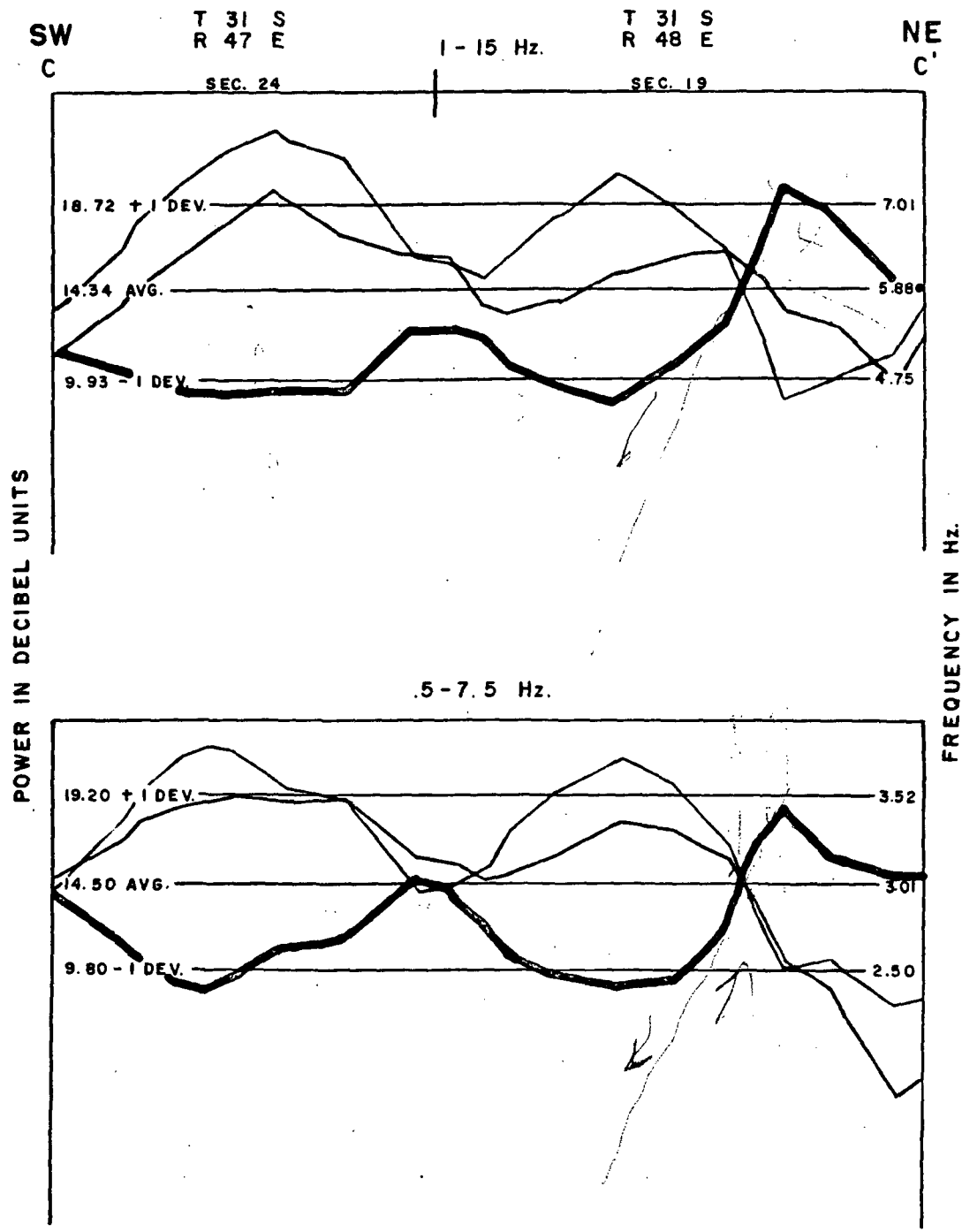


FIGURE 9
 SENTURION SCIENCES, INC.

BEOWAWE AREA

GROUNDNOISE CROSS SECTION C - C'

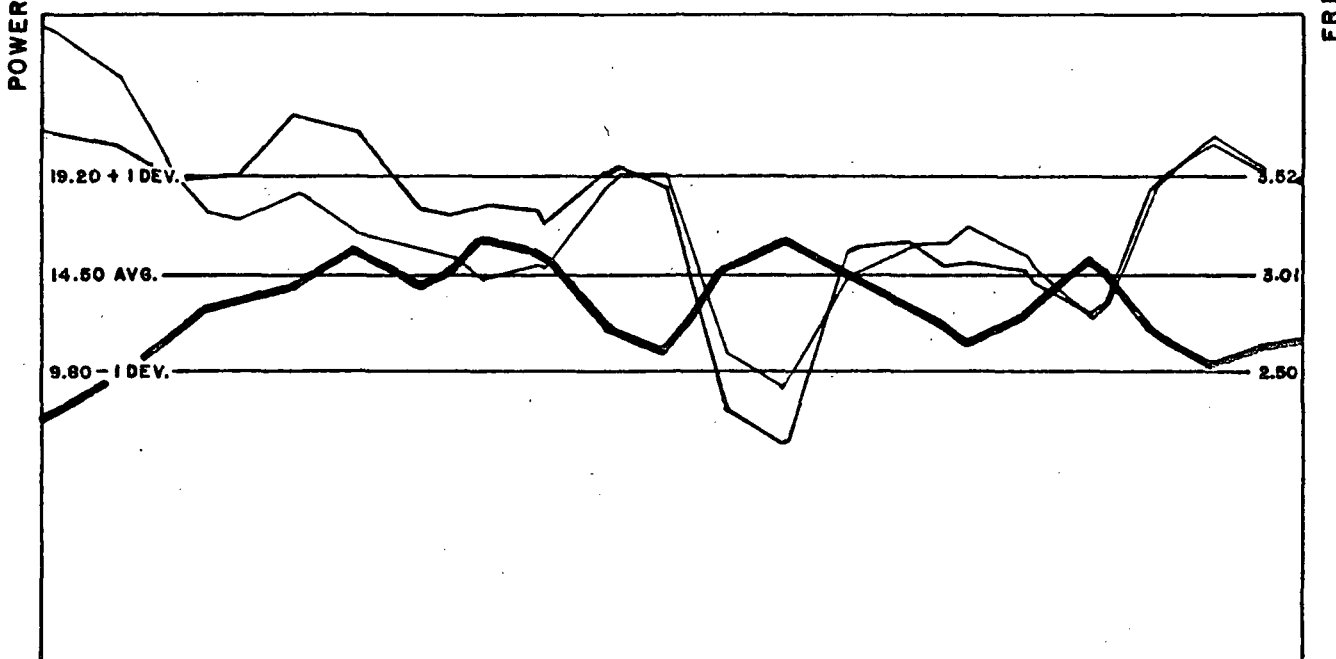
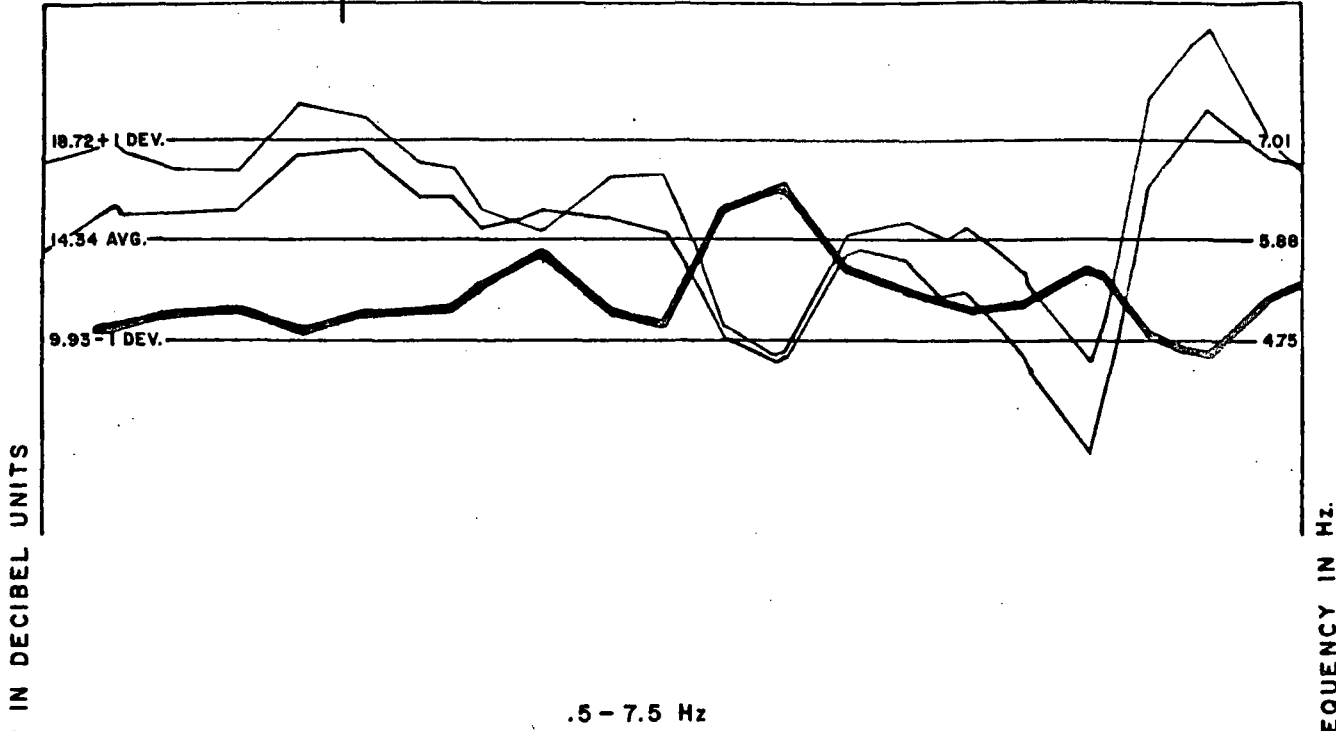


	INTEGRATED POWER
	MEAN FREQUENCY OF THE INTEGRATED POWER
	MF/IP RATIO

FIGURE 10
SENTURION SCIENCES, INC.

BEOVAWE AREA
GROUNDNOISE CROSS SECTION D-D'
 1 - 15 Hz

NW T 31 S T 31 S SE
 D R 47 E R 47 E D'
 SEC. 13 SEC. 24

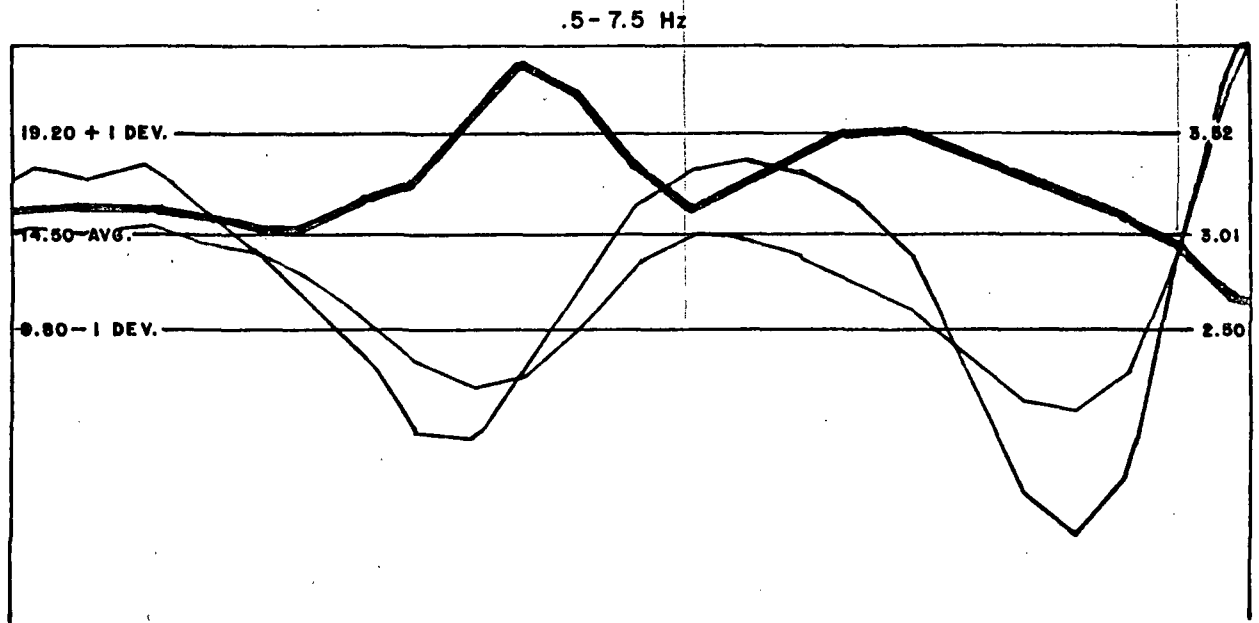
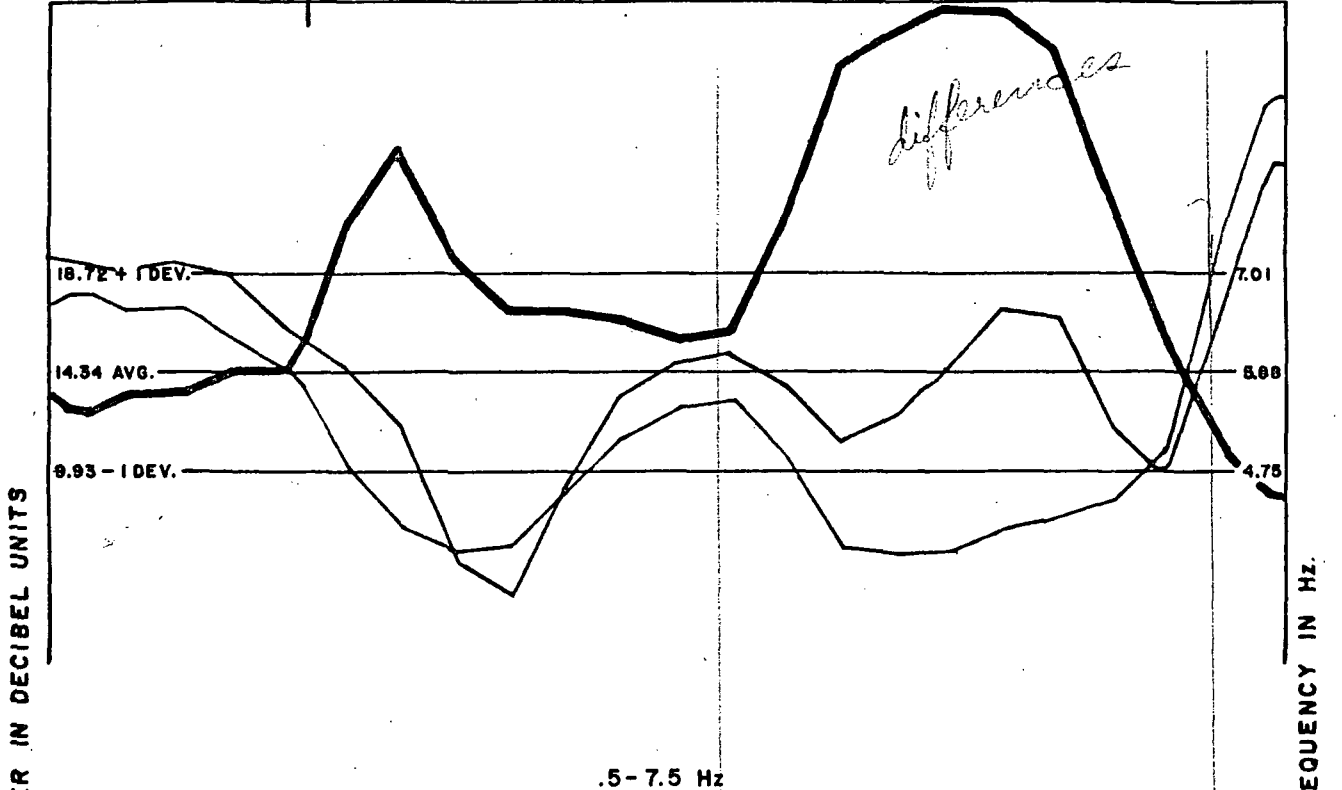


INTEGRATED POWER
 MEAN FREQUENCY OF THE INTEGRATED POWER
 MF/IP RATIO

FIGURE II
 SENTURION SCIENCES, INC.

BEOVAWE AREA
GROUNDNOISE CROSS SECTION E - E'
 1 - 15 Hz

NNW
E
T 31 S
R 47 E
SEC. 13
T 31 S
R 48 E
SEC. 18
T 31 S
R 48 E
SEC. 19
SSE
E'



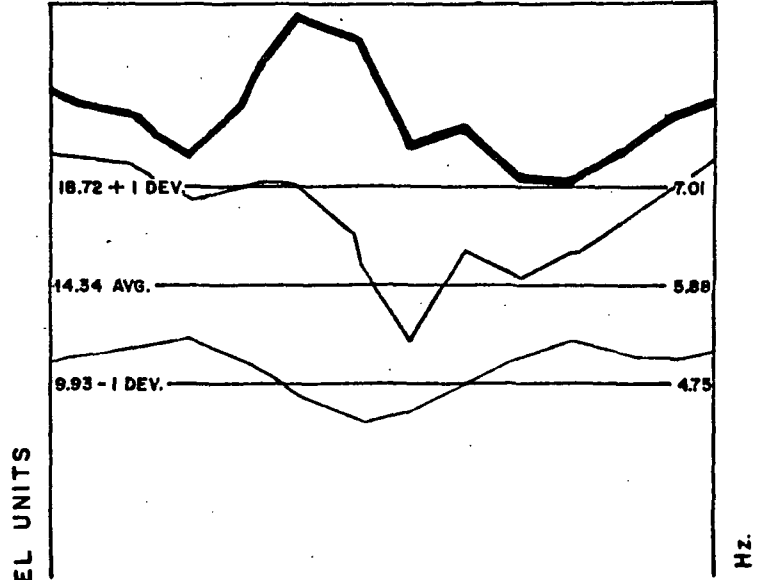
— INTEGRATED POWER
 — MEAN FREQUENCY OF THE INTEGRATED POWER
 — MF/IP RATIO

FIGURE 12
 SENTURION SCIENCES, INC.

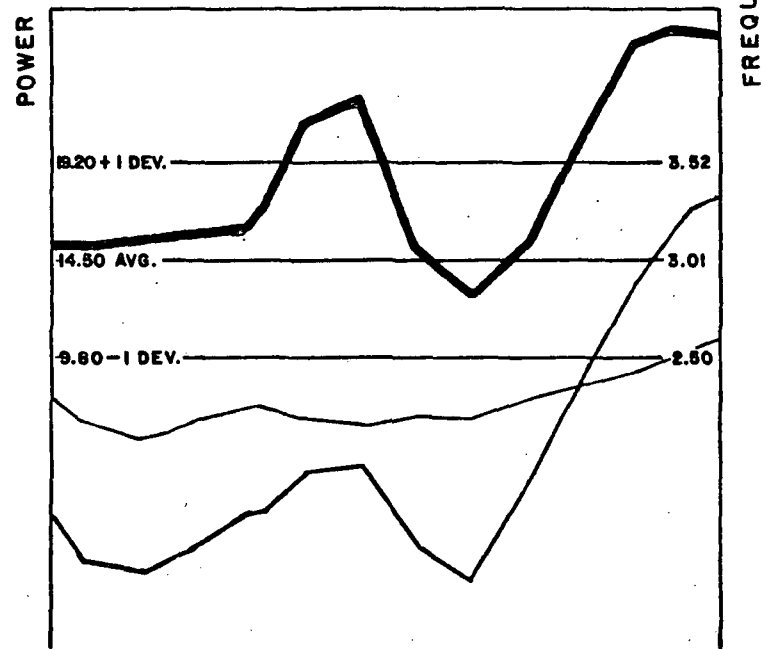
BEOVAWE AREA
GROUNDNOISE CROSS SECTION F-F'

1 - 15 Hz

NNW F T 31 S SSE F'
 R 48 E
 SEC. 18



.5 - 7.5 Hz



— INTEGRATED POWER
— MEAN FREQUENCY OF THE INTEGRATED POWER
— MF / IP RATIO

FIGURE 13
SENTURION SCIENCES, INC.

BEOVAWE AREA
GROUNDNOISE CROSS SECTION G-G'

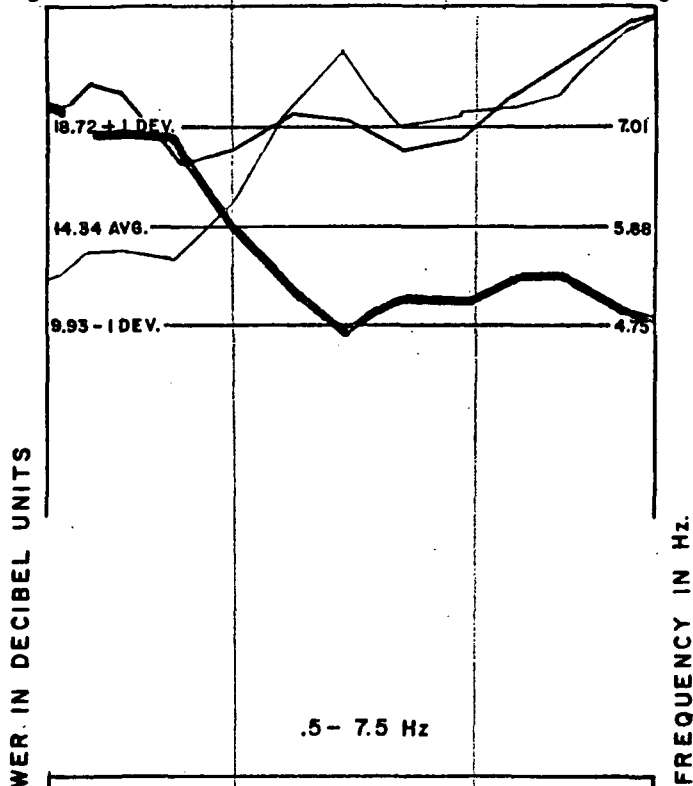
1 - 15 Hz

NNW
G

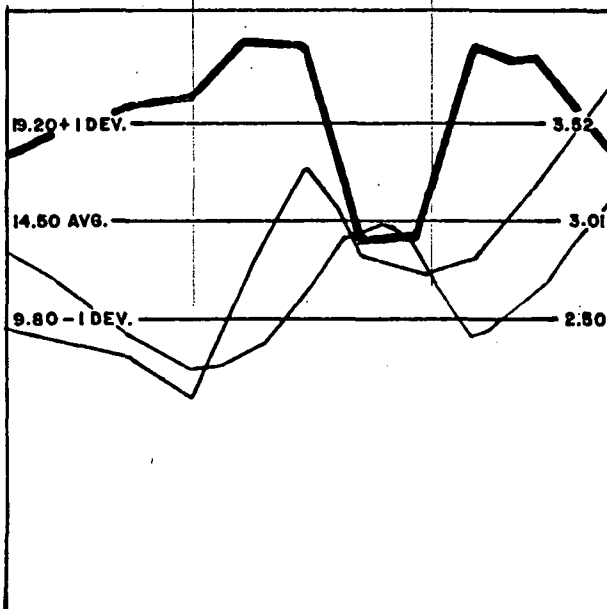
T 31 S
R 48 E
SEC. 18

differences

SSE
G'



.5 - 7.5 Hz



— INTEGRATED POWER
 — MEAN FREQUENCY OF THE INTEGRATED POWER
 — MF/IP RATIO

FIGURE 14
SENTURION SCIENCES, INC.

BEOWAWE AREA GROUNDNOISE CROSS SECTION H-H'

1-15 Hz

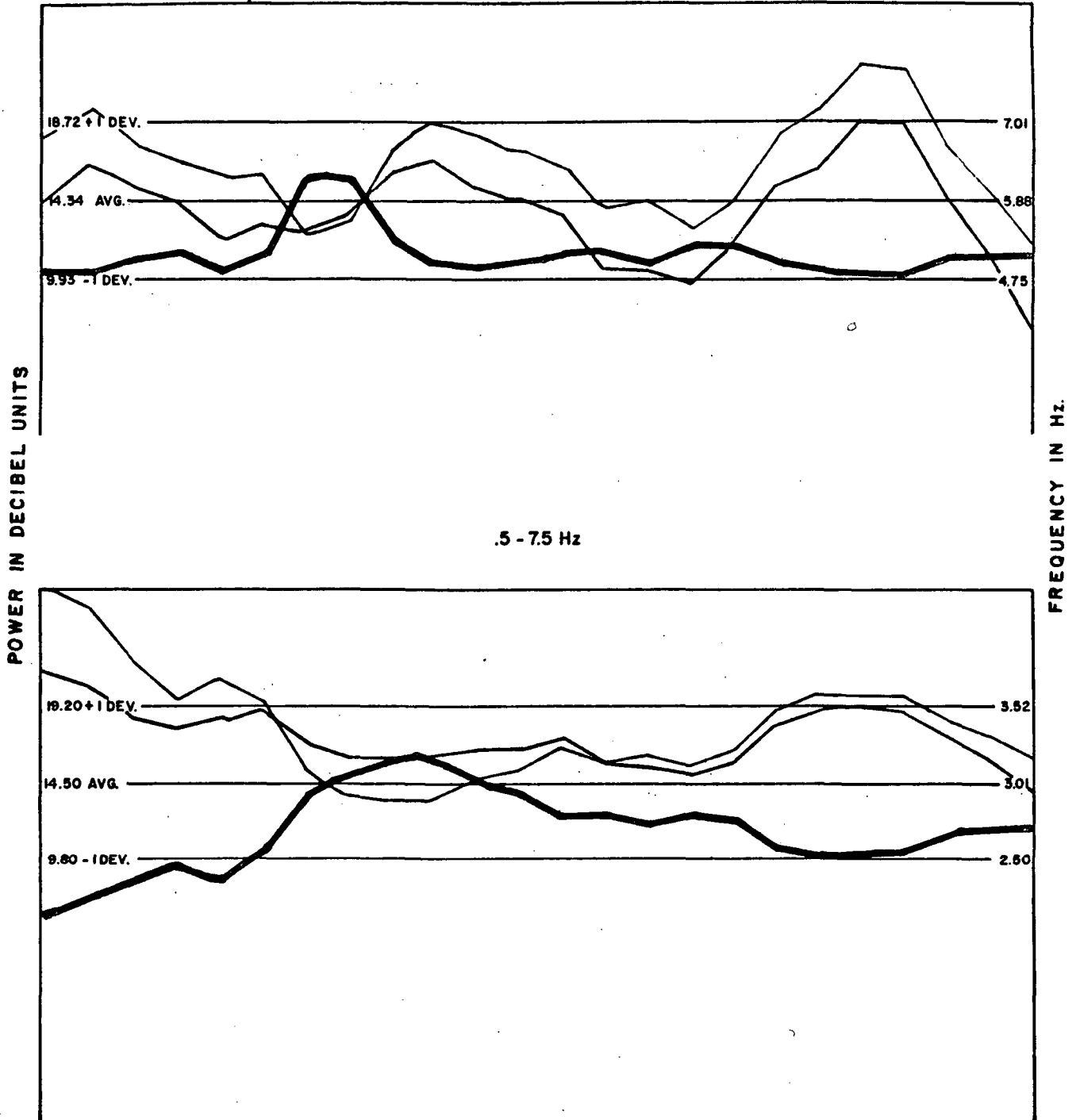
T 31 S
R 47 E

NNW
H

SSE
H'

SEC. 13

SEC. 24



—	INTEGRATED POWER
- - -	MEAN FREQUENCY OF THE INTEGRATED POWER
— (thick)	MF / IP RATIO

FIGURE 15
SENTURION SCIENCES, INC.

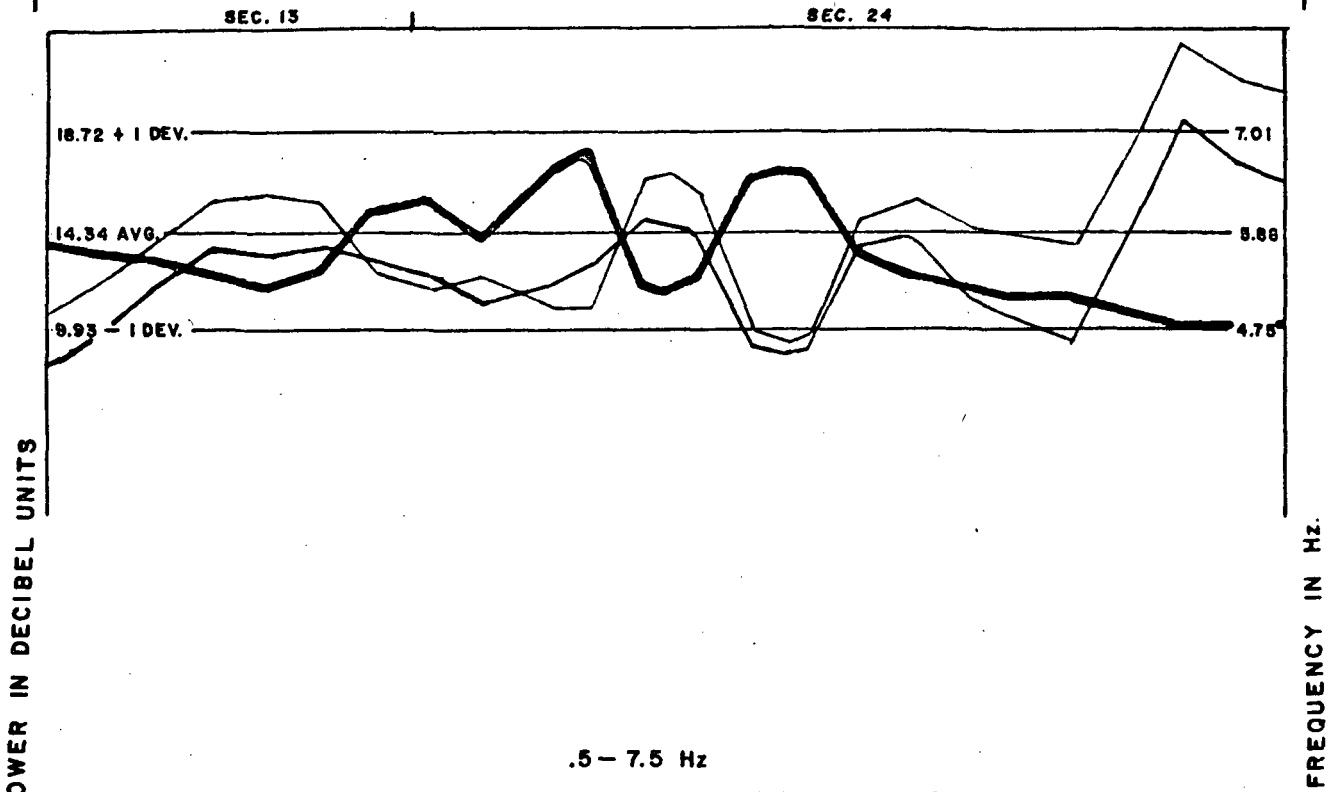
BEOVAWE AREA
GROUNDNOISE CROSS SECTION 1-1'

1 - 15 Hz

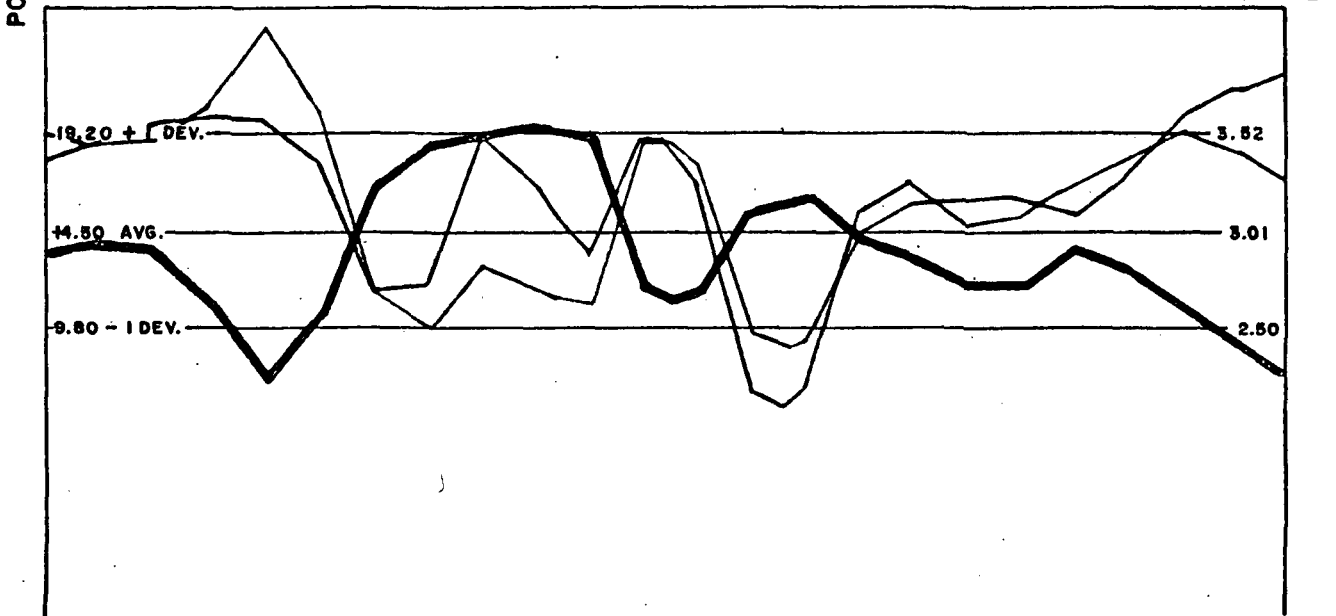
NNW

T 31 S
R 47 E

SSE



.5 - 7.5 Hz

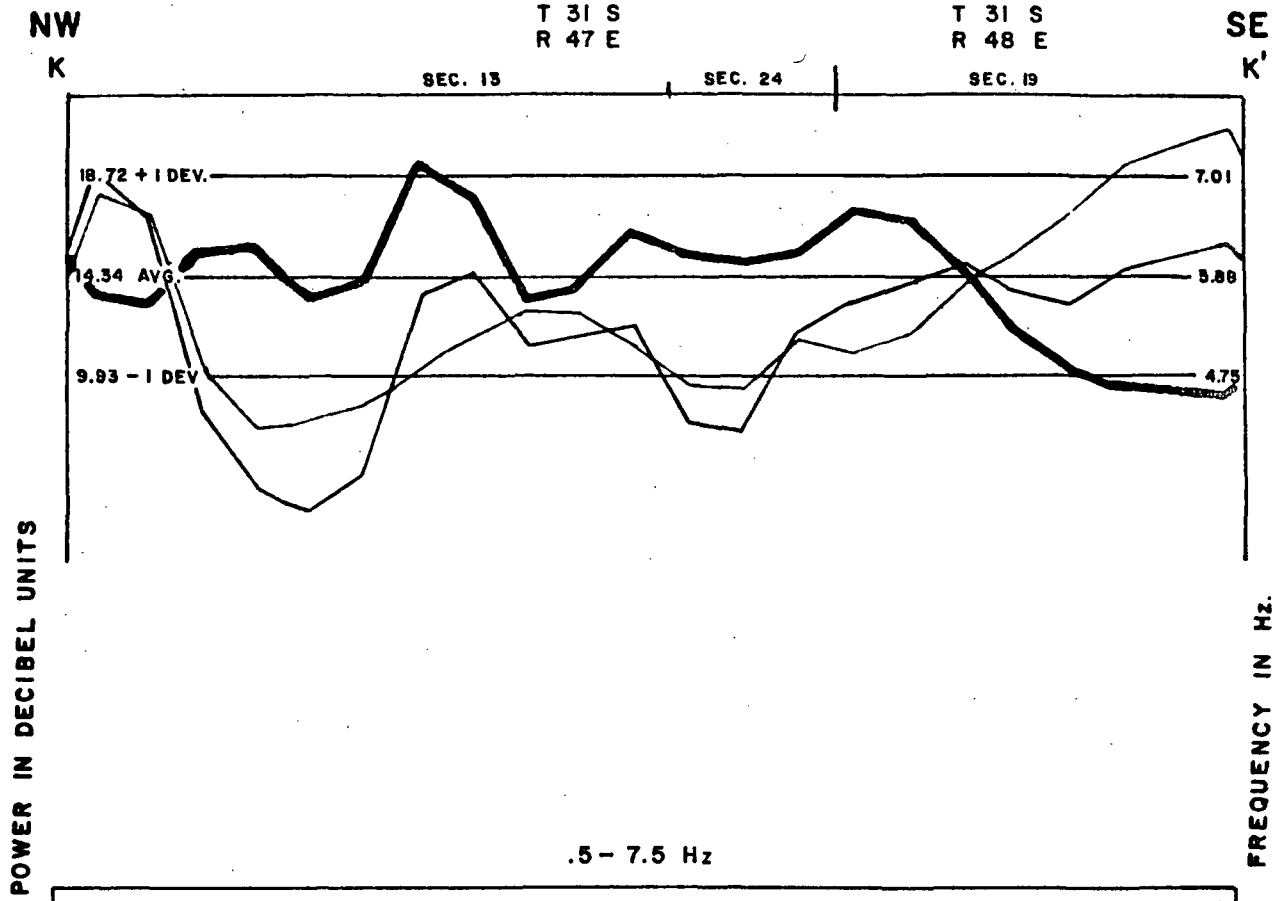


— INTEGRATED POWER
 — MEAN FREQUENCY OF THE INTEGRATED POWER
 — MF/ IP RATIO

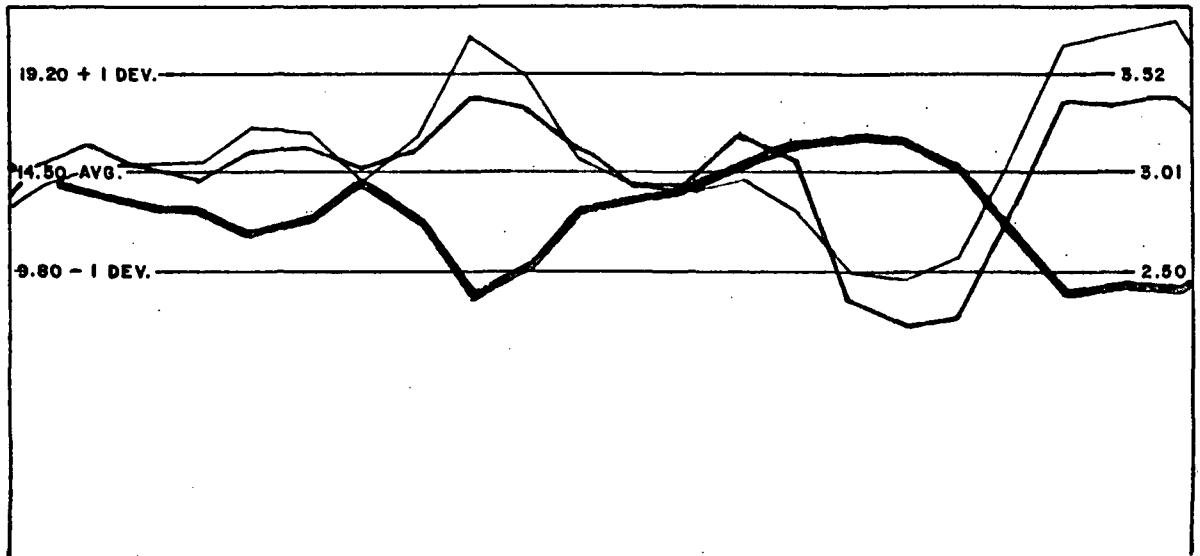
FIGURE 16
 SENTURION SCIENCES, INC.

BEOVAWE AREA
GROUNDNOISE CROSS SECTION K-K'

1 - 15 Hz



.5 - 7.5 Hz



— INTEGRATED POWER
 — MEAN FREQUENCY OF THE INTEGRATED POWER
 — MF/IP RATIO

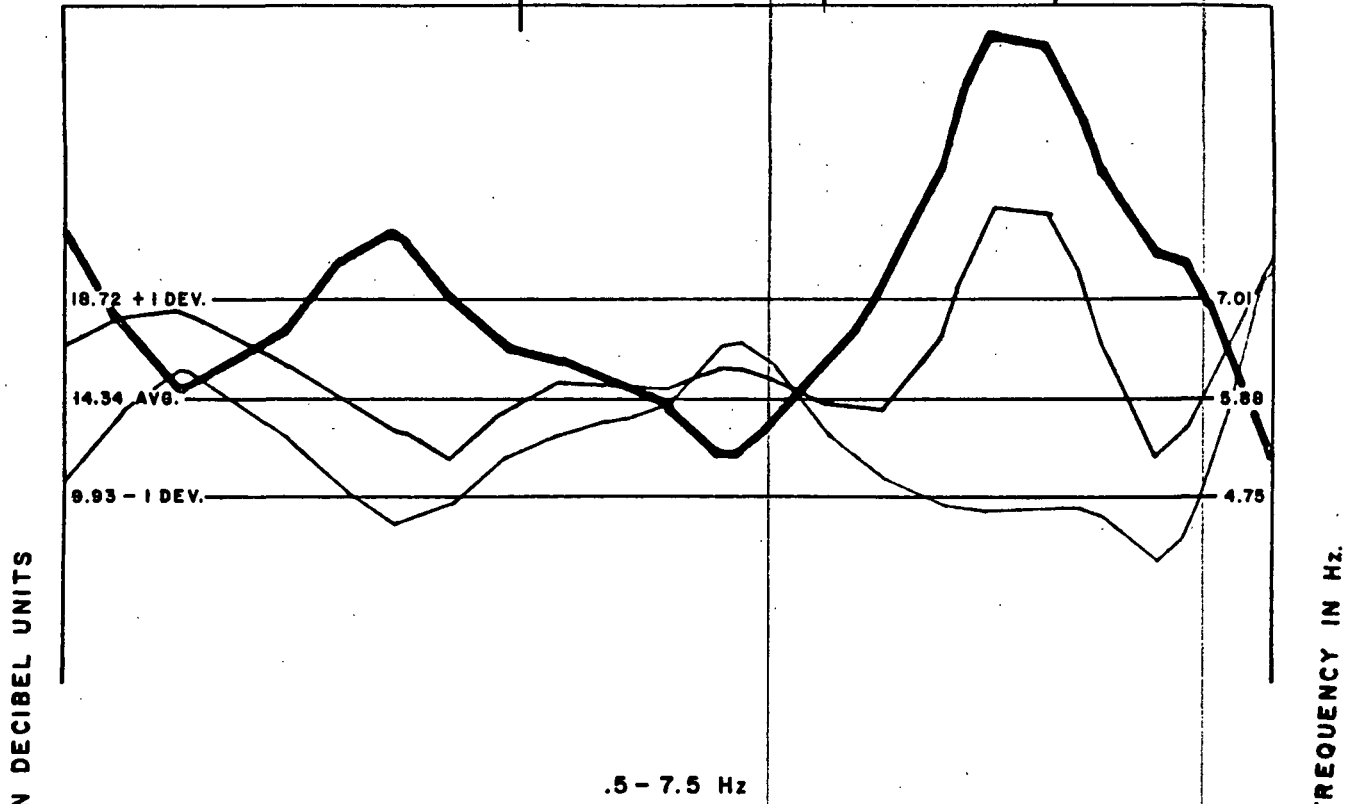
FIGURE 18
 SENTURION SCIENCES, INC.

BEOVAWE AREA
GROUNDNOISE CROSS SECTION L - L'

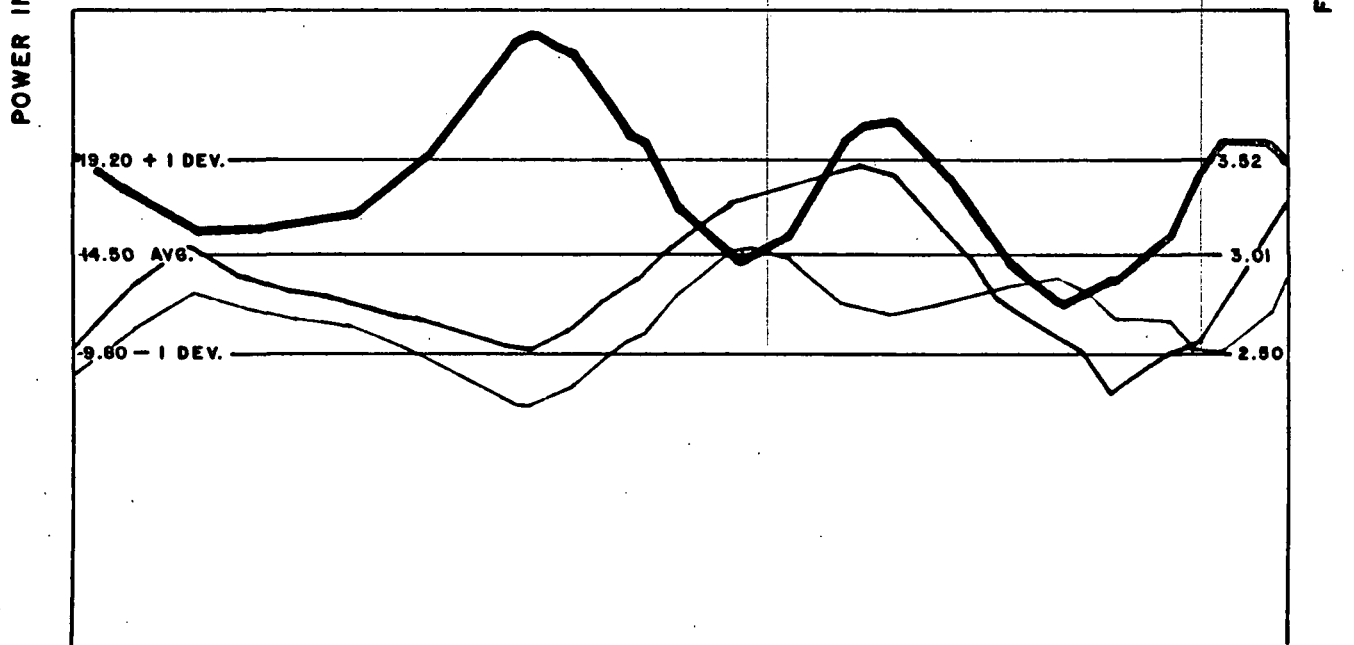
1 - 15 Hz

NW T 31 S T 31 S SE
R 47 E R 48 E L'
L SEC. 13 SEC. 18 SEC. 19 L'

Differences



.5 - 7.5 Hz



— INTEGRATED POWER
— MEAN FREQUENCY OF THE INTEGRATED POWER
— MF/IP RATIO

FIGURE 19
SENTURION SCIENCES, INC.

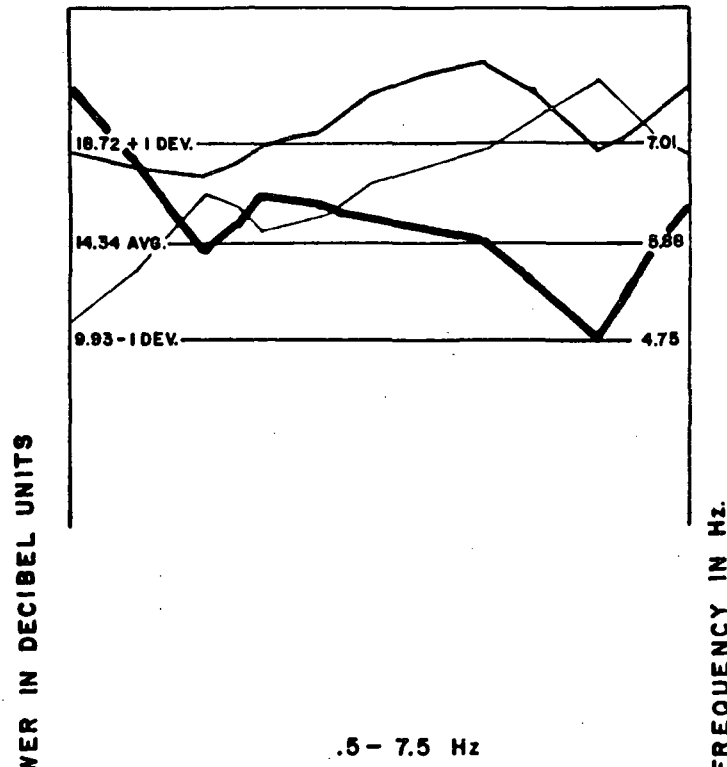
BEOVAWE AREA
GROUNDNOISE CROSS SECTION M-M'

1 - 15 Hz

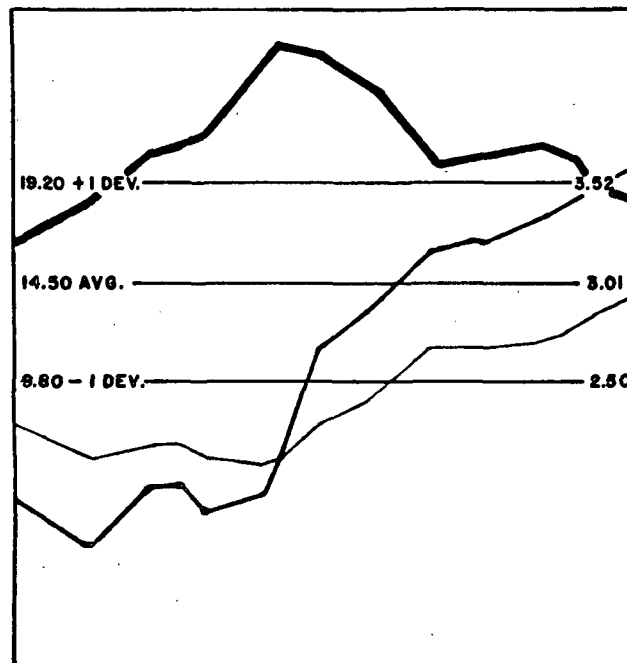
NNW
M

T 31 S
R 48 E
SEC. 18

SSE
M'



.5 - 7.5 Hz



— INTEGRATED POWER
 — MEAN FREQUENCY OF THE INTEGRATED POWER
 — MF/IP RATIO

FIGURE 20
SENTURION SCIENCES, INC.

BEOVAWE AREA
GROUNDNOISE CROSS SECTION N-N'

1 - 15 Hz

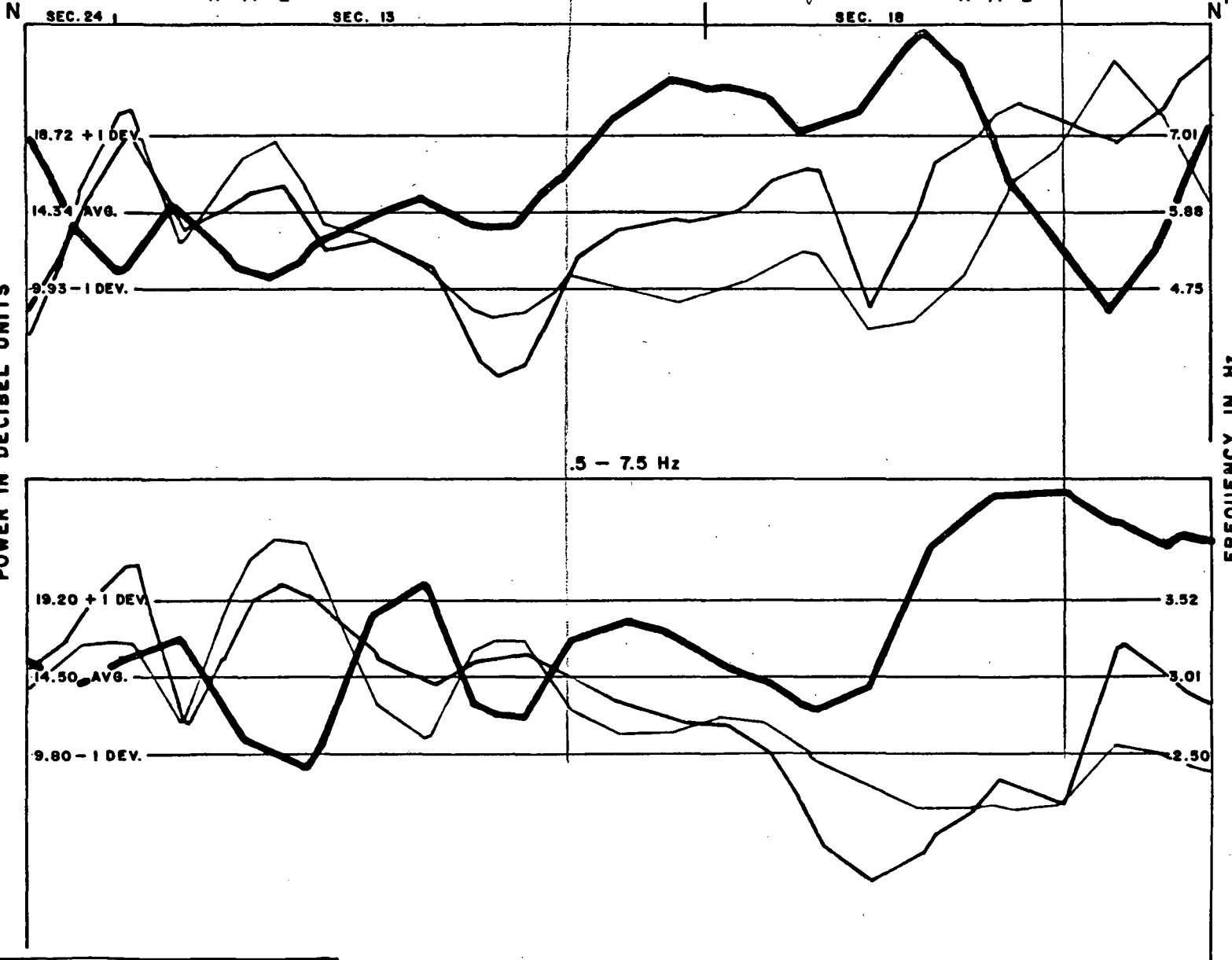
Difference

SW

T 31 S
R 47 E

T 31 S
R 47 E

NE



— INTEGRATED POWER
— MEAN FREQUENCY OF THE INTEGRATED POWER
— MF/IP RATIO

FIGURE 21
SENTURION SCIENCES, INC.

BEOWAWE AREA GROUNDNOISE CROSS SECTION 0-0'

1-15 Hz.

SW
0

T 31 S
R 47 E

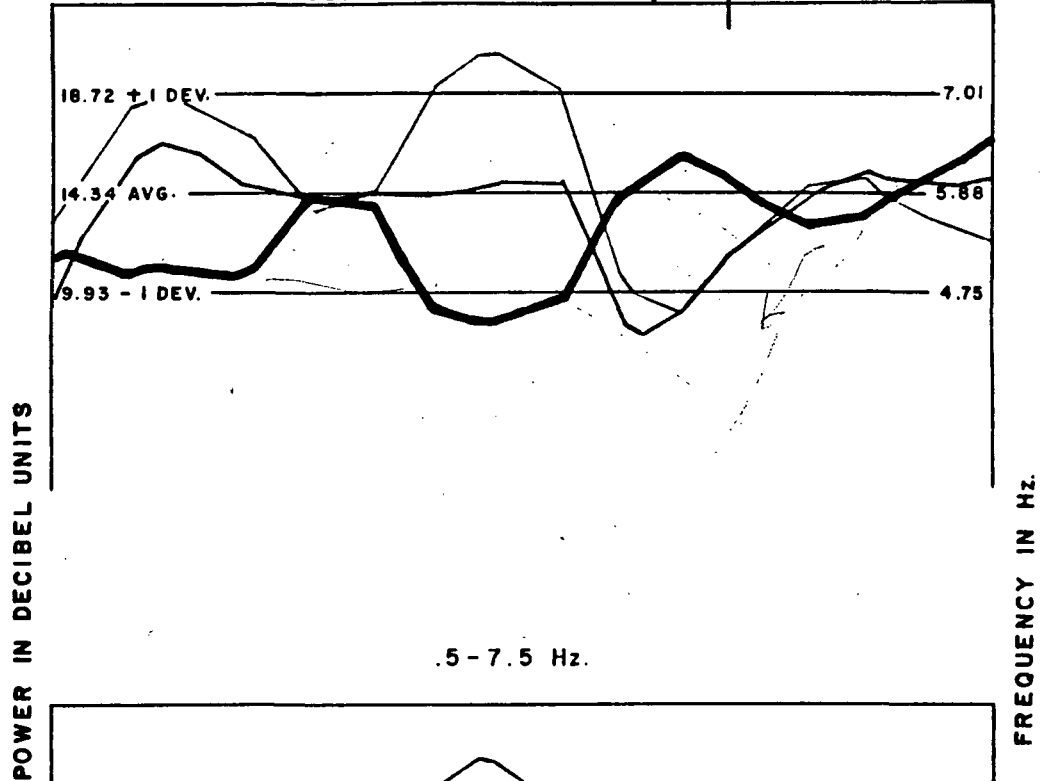
T 31 S
R 48 E

NE
0

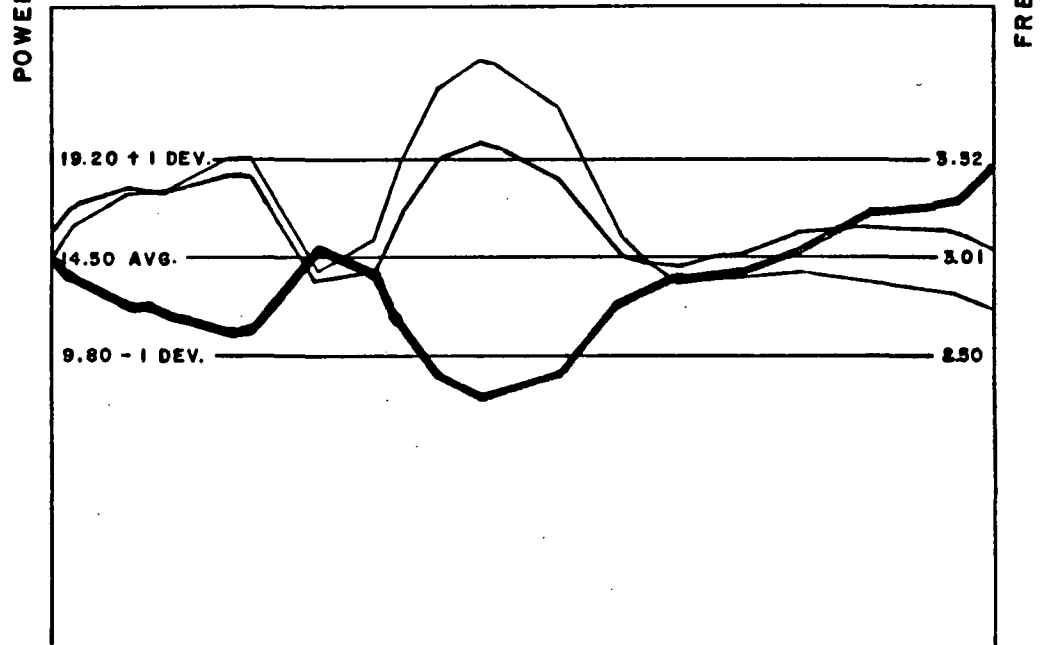
SEC. 24

13

SEC. 18



.5 - 7.5 Hz.

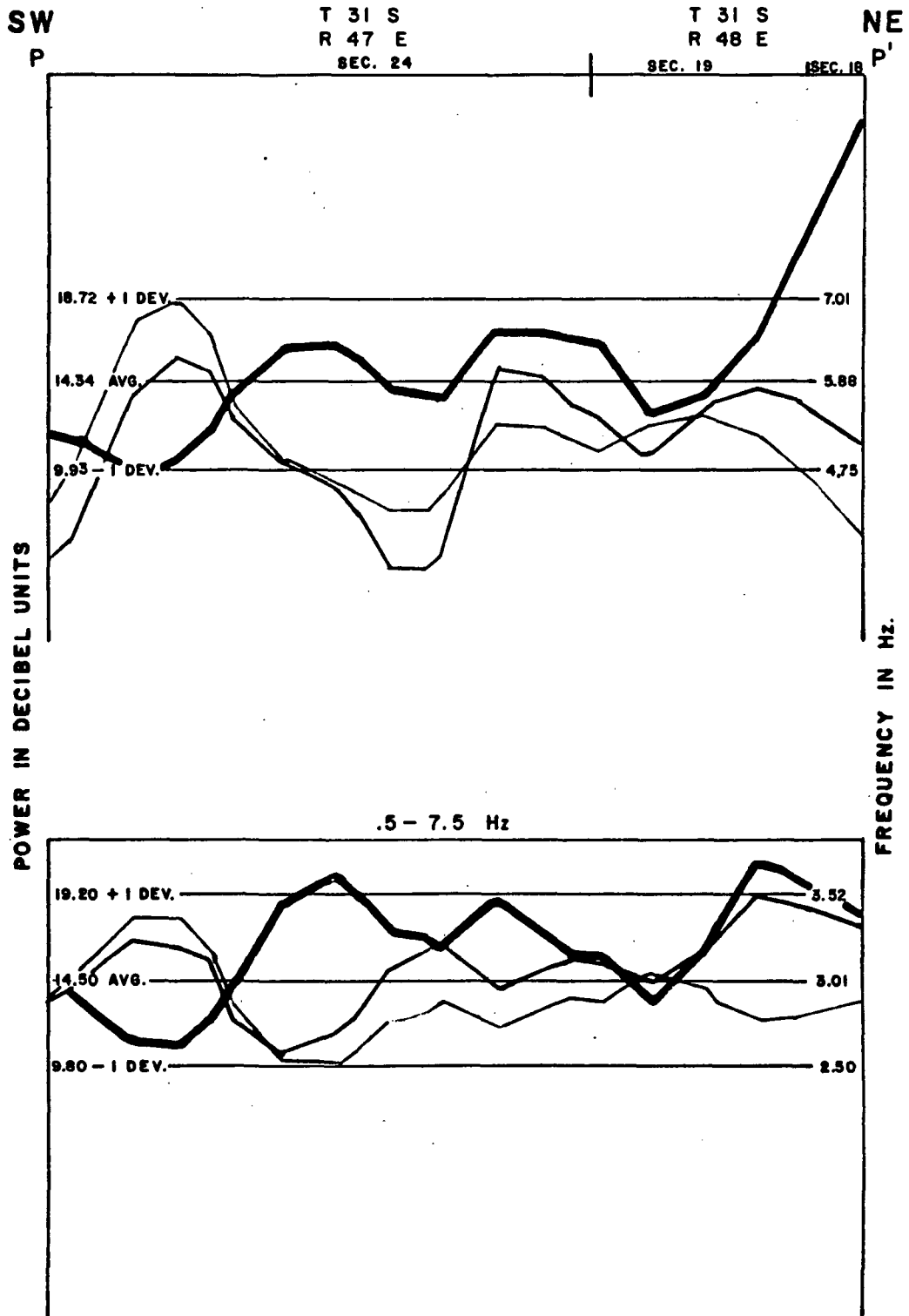


	INTEGRATED POWER
	MEAN FREQUENCY OF THE INTEGRATED POWER
	MF/IP RATIO

FIGURE 22
SENTURION SCIENCES, INC.

BEOWAVE AREA GROUNDNOISE CROSS SECTION P-P'

1-15 Hz



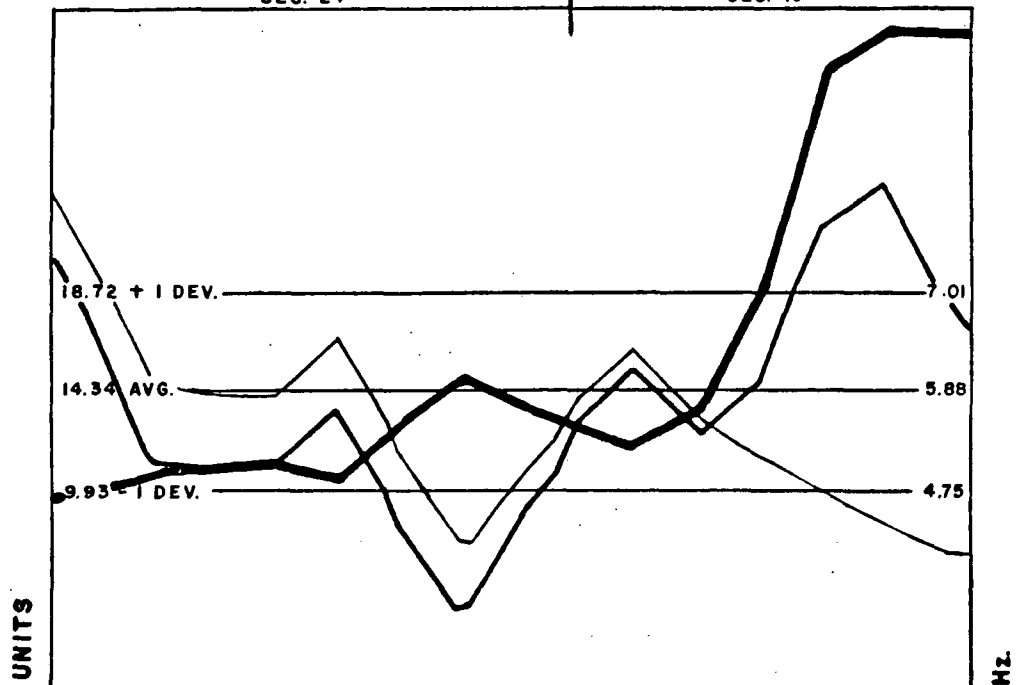
— INTEGRATED POWER
 — MEAN FREQUENCY OF THE INTEGRATED POWER
 — MF/IP RATIO

FIGURE 23
SENTURION SCIENCES, INC.

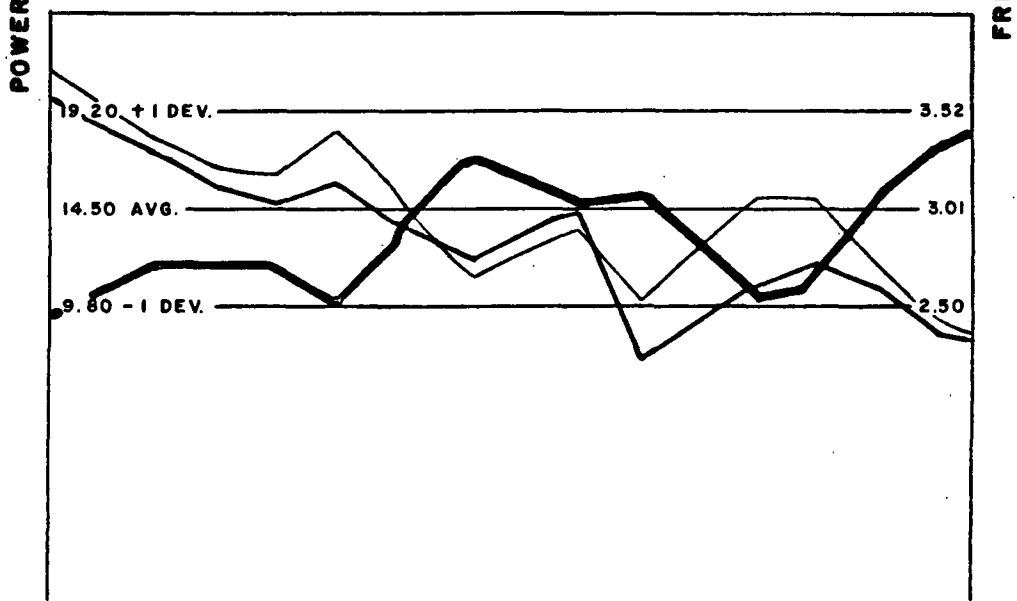
BEOWAWE AREA GROUNDNOISE CROSS SECTION, Q-Q'

1-15 Hz.

SW
Q
T 31 S
R 47 E
SEC. 24
T 31 S
R 48 E
SEC. 19
NE
Q'



.5-7.5 Hz.



——— INTEGRATED POWER
 ——— MEAN FREQUENCY OF THE INTEGRATED POWER
 ——— MF/IP RATIO

FIGURE 24
SENTURION SCIENCES, INC.

BEOWAWE AREA
GROUNDNOISE CROSS SECTION R-R'

1-15 Hz

Differences

WNW
R

T 31 S
R 47 E

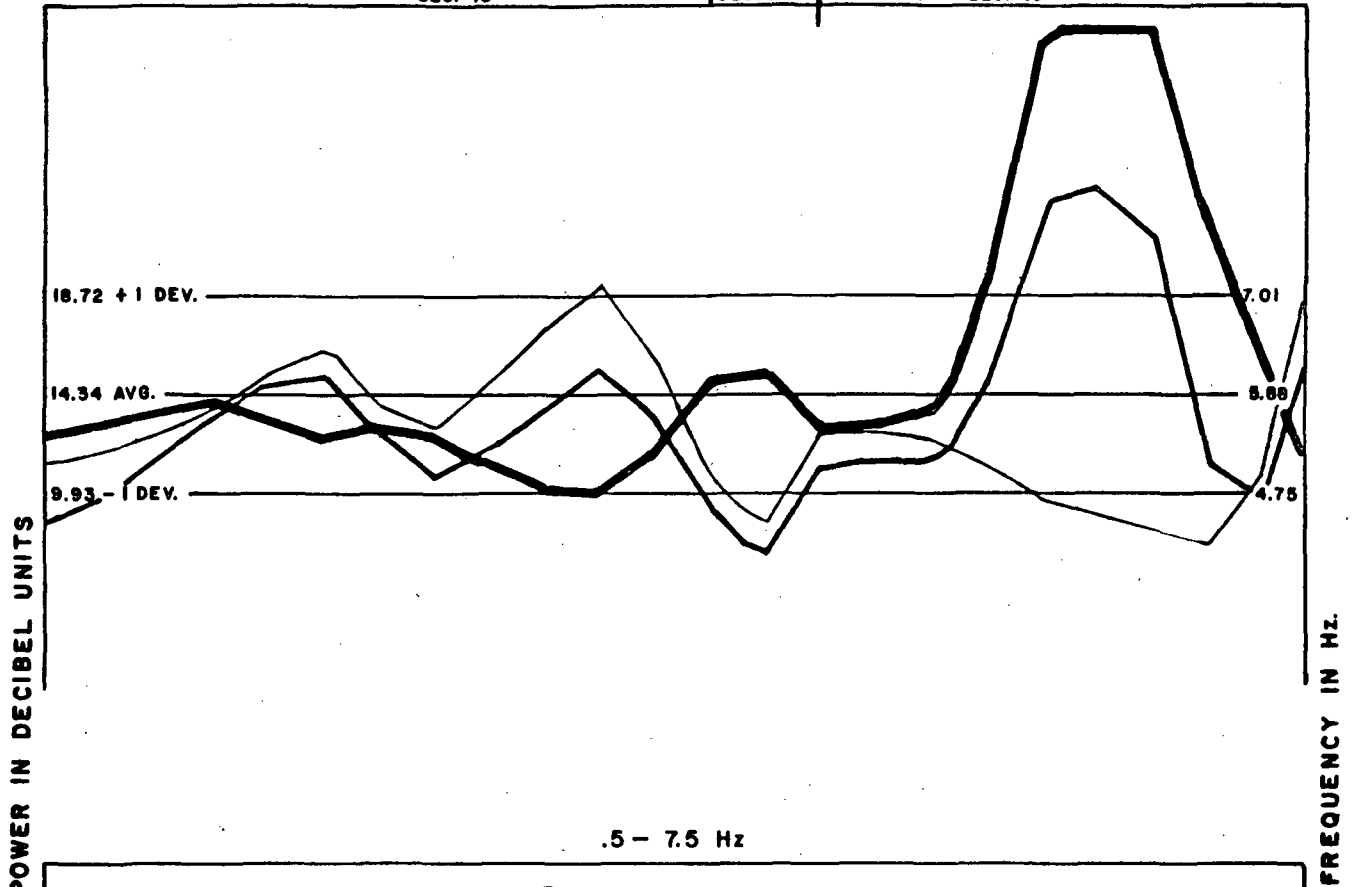
T 31 S
R 48 E

ESE
R'

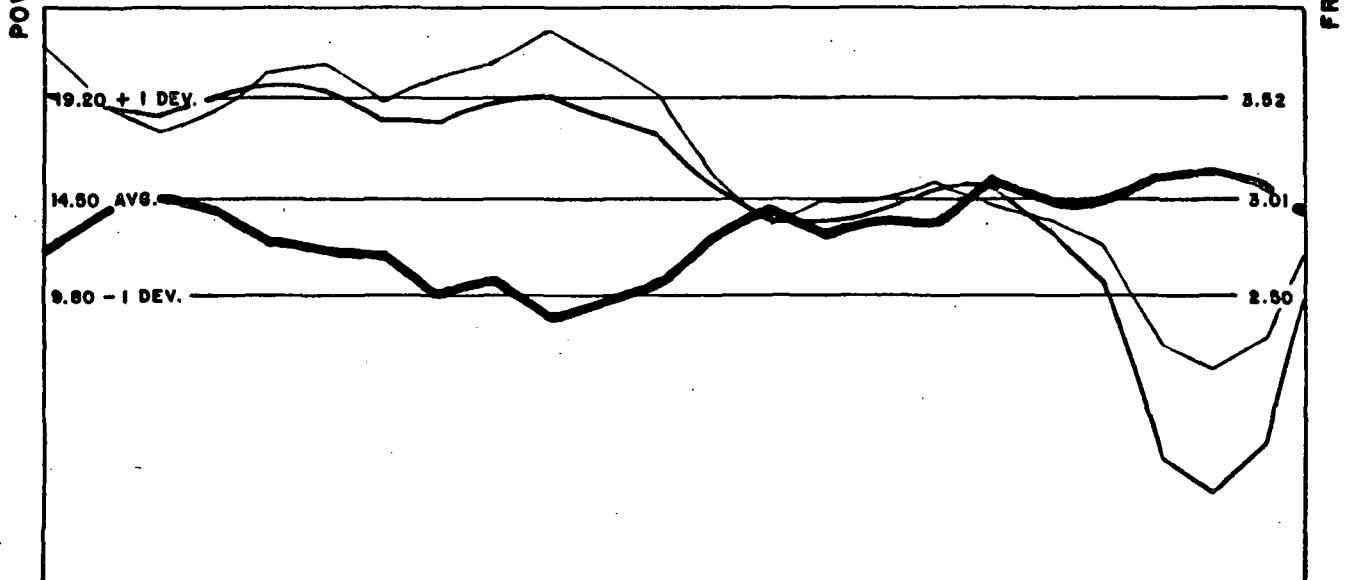
SEC. 13

SEC. 24

SEC. 19



.5 - 7.5 Hz



— INTEGRATED POWER
— MEAN FREQUENCY OF THE INTEGRATED POWER
- - - MF/IP RATIO

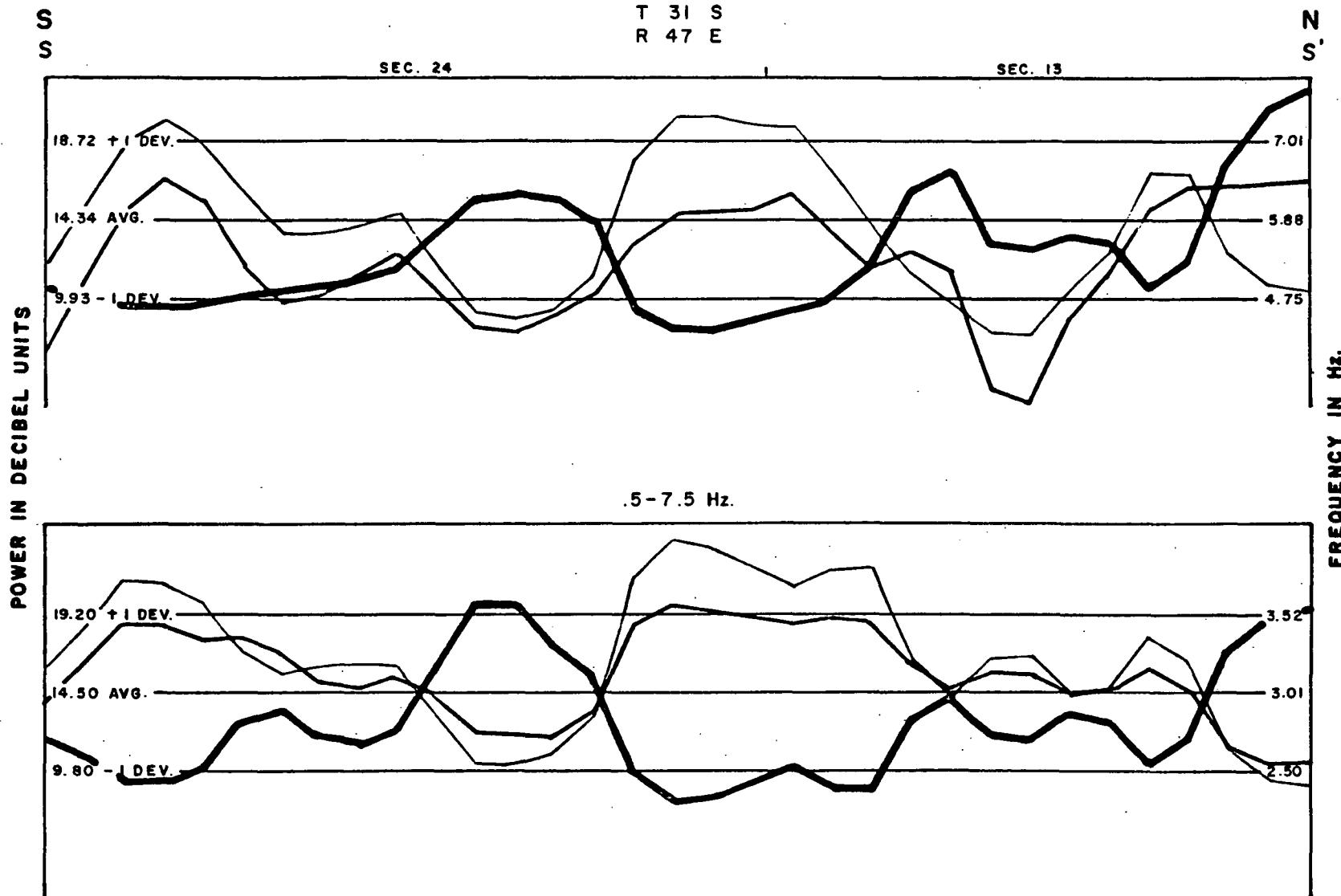
FIGURE 25
SENTURION SCIENCES, INC.

BOWAWE AREA
GROUNDNOISE CROSS SECTION S-S'

1-15 Hz.

T 31 S

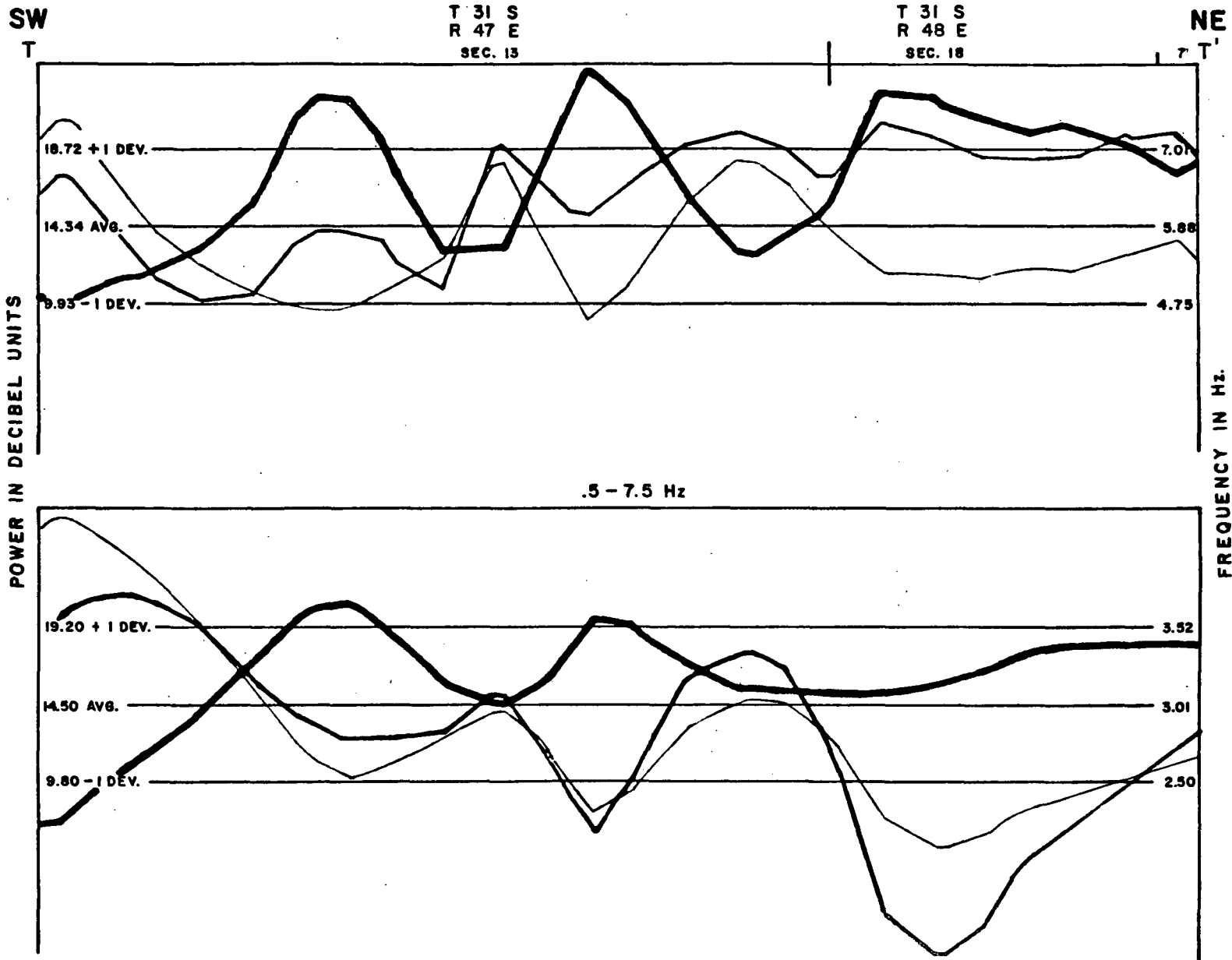
R 47 E



— INTEGRATED POWER
 — MEAN FREQUENCY OF THE INTEGRATED POWER
 ··· MF/IP RATIO

FIGURE 26
SENTURION SCIENCES, INC.

BEOVAWE AREA
GROUNDNOISE CROSS SECTION T-T'
 1 - 15 Hz



— INTEGRATED POWER
 — MEAN FREQUENCY OF THE INTEGRATED POWER
 — MF/IP RATIO

FIGURE 27
 SENTURION SCIENCES, INC.