

GLO 2480

**REPORT
of
SUB-SURFACE
SURVEY**

CHEVRON U.S.A.

44-5

SODA LAKE UNIT

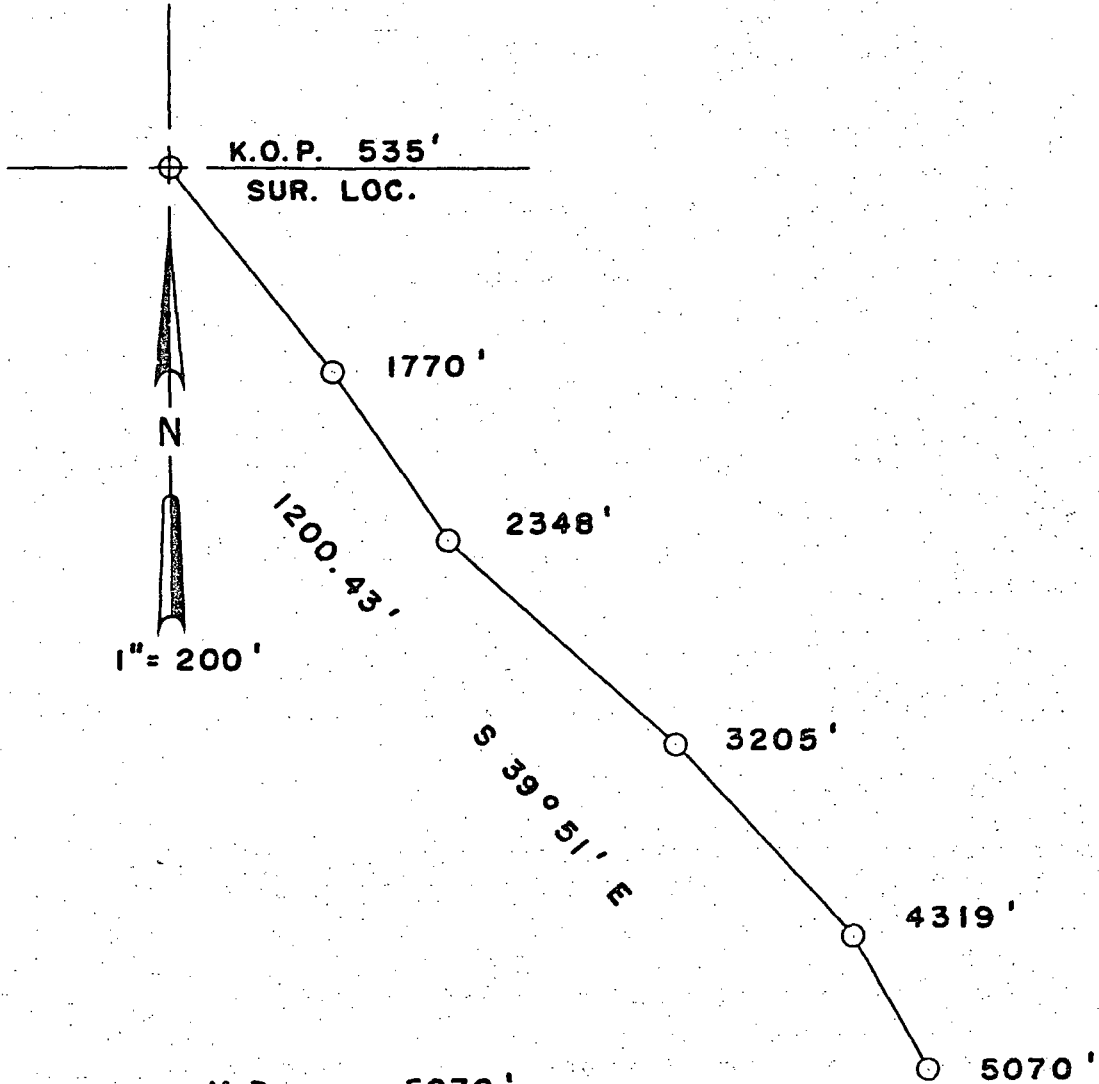
JOB NO. B 2920

DATE 1-21-78

DIRECTIONAL DRILLING, INC.

BAKERSFIELD

Phone: 324-3574



M. D.	5070'
V. D.	4883.83'
SOUTH	921.39'
EAST	769.21'

DIRECTIONAL DRILLING, INC.

COMPANY **CHEVRON U.S.A.**

SURVEY DATA SHEET

SHEET NO. **1**
JOB NO. **B2920**

FIELD **Soda Lake Unit**

ADDRESS _____

COUNTY **Churchill**

STATE **Nevada**

COURSE LENGTH	TERMINAL DRIFT ANGLE	TERMINAL DIRECTION OF DEVIATION	AVERAGE DRIFT ANGLE	VERTICAL DEPTH		COURSE DEVIATION	AVERAGE DIRECTION OF DEVIATION	COURSE COORDINATES				TOTAL COORDINATES			
				COURSE	TOTAL			NORTH	SOUTH	EAST	WEST	NORTH	SOUTH	EAST	WEST
31	1.30	S73E			535			ASSUMED VERTICAL TO 535'							
33	3.00	S13E	1.30	130.96	665.96	3.43	S73E								
1	5.15	S13E	2.15	102.92	768.88	4.05	S43E	1.00	3.28						
3	8.15	S23E	4.15	30.92	799.80	2.30	S13E	2.96	2.76			1.00	3.28		
1	11.15	S38E	6.45	62.57	862.37	7.40	S28E	2.24	0.52			3.96	6.04		
1	13.15	S43E	9.45	62.09	924.46	10.67	S30°30'E	6.53	3.47			6.20	6.56		
1	15.00	S43E	12.15	98.70	1023.16	21.43	S40°30'E	9.19	5.42			12.73	10.03		
1	16.15	S40E	14.15	115.33	1138.49	29.30	S43°E	16.30	13.92			21.92	15.45		
1	17.45	S39E	15.45	119.35	1257.84	33.65	S41°30E	21.43	19.98			38.22	29.37		
1	18.45	S38E	17°	107.11	1364.95	32.75	S39°30E	25.21	22.30			59.65	49.35		
19	S37E	18.15	133.91	1498.86	44.16	S38°30E	25.27	20.83			84.86	71.65			
19.30	S35E	18.45	116.47	1615.33	39.53	S37°30E	34.56	27.49			110.13	92.48			
10°	S33E	19.15	117.07	1732.40	40.88	S36E	31.36	24.07			144.69	119.97			
0.30	S34E	19.45	114.83	1847.23	41.22	S34E	33.07	24.03			176.05	144.04			
1.30	S34E	20.15	116.34	1963.57	42.92	S33°30E	34.17	23.05			209.12	168.07			
1.00	S33E	21.00	115.77	2079.34	44.44	S34E	35.79	23.69			243.29	191.12			
1.00	S38E	21.45	115.17	2194.51	45.95	S33°30E	36.84	24.85			279.08	214.81			
1.00	S39E	22.00	77.88	2272.39	31.47	S35°30E	38.32	25.36			315.92	239.66			
00	S43E 137°	22.00	58.41	2330.80	23.60	S38°30E	25.62	18.27			354.24	265.02			
45	S50E	22.00	56.56	2387.36	22.85	S41E	18.47	14.69			379.86	283.20			
00	S50E	21.30	108.86	2496.22	42.88	S46°30E	17.24	14.99			398.33	297.98			
45	S50E	21.00	116.70	2612.92	44.80	S50E	29.52	31.11			415.57	312.97			
	S50E 136°	21.30	109.79	2722.71	43.25	S50E	28.80	23.32			445.09	344.08			
	S51E	22.90	115.90	2838.61	46.83	S50E	27.80	33.13			473.89	378.40			
	S50E	22.00	114.05	2952.66	46.08	S50°30E	30.10	35.87			501.69	411.53			
0	S50E	21.45	116.70	3068.76	46.33	S50°30E	29.31	35.56			531.79	447.40			
0	S50E	20.45	104.73	3173.49	39.68	S50E	29.47	35.75			561.10	482.96			
5	S48E	18.15	118.71	3292.20	39.15	S49E	25.51	30.39			590.57	518.71			
0	S43E	14.45	120.88	3413.08	31.83	S45°30E	25.69	29.55			616.08	549.10			
0	S43E	12.30	128.87	3541.95	28.56	S43E	22.31	22.70			641.77	578.65			
0	S43E	12.00	122.26	3664.21	25.99	S43E	20.89	19.48			664.08	602.35			
0	S40E 140°	11.45	120.42	3784.63	25.04	S41°30E	19.01	17.73			684.97	620.83			
0	S37E 143°	12.00	121.28	3905.91	25.78	S38°30E	18.75	16.59			703.98	638.56			
0	S34E	11.45	121.40	4027.31	25.25	S35°30E	20.18	16.05			722.73	655.15			
0	S29E	11.30	121.51	4148.82	24.73	S31°30E	20.56	14.66			742.91	671.20			
0	S27E	11.30	200.88	4349.70	40.88	S28E	21.08	12.92			763.47	685.86			
0	S27E	11.30	160.70	4510.40	32.70	S27E	21.08	12.92			784.55	698.78			
0	S25E	11.30	88.19	4598.59	17.95	S26E	36.09	19.19			820.64	717.97			
0	S28E	11.45	124.33	4722.92	25.86	S26°30E	29.14	14.85			849.78	732.82			
0	S28E	12.30	68.34	4791.26	15.15	S28E	16.13	7.87			865.91	740.69			
0	S27E	13.00	92.57	4883.83	21.38	S27°30E	23.14	11.54			889.05	752.23			
1200.43'						S 39°51' E	13.38	7.11			902.43	759.34			
							18.96	9.87			921.39	769.21			

NORTH SOUTH EAST WEST NORTH SOUTH EAST WEST