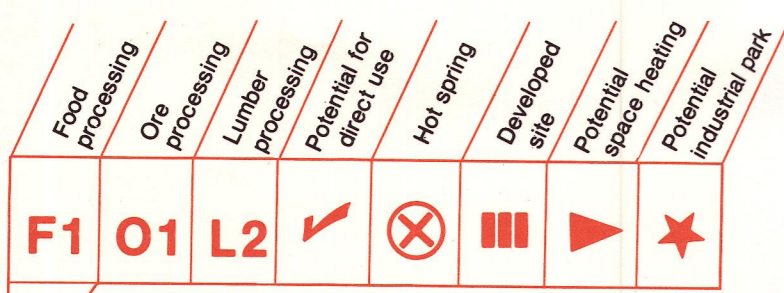


# ENERGY EXPLORATION IN THE PHOSPHATE REGION OF S. E. IDAHO

AREA ID Energy  
UNIVERSITY OF UTAH RESEARCH INSTITUTE EARTH SCIENCE LAB  
ENERGY CONSUMPTION BY MAJOR INDUSTRIES

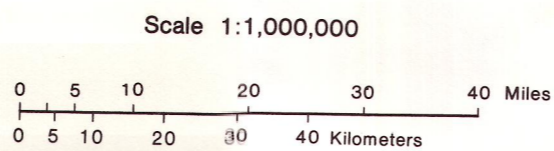
## MAP LOCATION DATA BAR



Map symbols are located within a data bar. Each map symbol, when it occurs, occupies only the position shown in the bar above. The data bar can be used to compare the characteristics of different map locations.

- F1** One Food Processing Plant
- O1** One Ore Processing Plant
- L2** Two Lumber Processing Plants
- ✓ Industry with Potential for Direct Use of Geothermal Energy.
- ⊗ Hot Springs (Sites with geochemical thermometry indicating temperatures of 150° C. or greater, as identified by the Idaho Department of Water Resources).
- ▬ Locations with Developed Geothermal Resources.
- ▬ Communities with Potential Geothermal Energy.
- ★ Geothermal Sites with Potential for New Industrial Parks (as identified by the Idaho Office of Energy).

1980  
IDAHO OFFICE OF ENERGY  
John V. Evans, Governor



Base map by the Carl-O-Graphics Laboratory

### Cities and Towns

- Over 25,000
- 3500 - 25,000
- Under 3500

| Company Name                  | Location     | Type of Processing     | Total Energy Demand (10 <sup>6</sup> BTU/yr) |
|-------------------------------|--------------|------------------------|--|
| FMC Corporation               | Pocatello    | Elemental Phosphorus   | 6,859  |
| Monsanto Chemical Corporation | Soda Springs | Phosphorus Fertilizers | 5,876  |
| J.R. Simplot Fertilizer       | Idaho Falls  | Sugar Beet Pulp        | 4,655  |
| U & I Sugar Company           | Idaho Falls  | Portland Cement        | 2,311  |
| Idaho-Portland Cement         | Idaho Falls  | Potato Flour           | 1,527  |
| J.R. Simplot Food Division    | Idaho Falls  | Potato Flakes, Slices  | 1,140  |
| American Potato Co.           | Idaho Falls  | Potato Granules        | 1,042  |
| Rogers Brothers Co.           | Idaho Falls  | Potato Flakes, Slices  | 1,000  |
| ORE-IDA Food Inc.             | Burley       | Frozen Potatoes        | 770  |
| R.T. French Co.               | Shelley      | Potato Granules        | 727  |
| Del Monte Corp.               | Burley       | Potatoes               | 300  |
| Rogers Brothers Co.           | Rexburg      | Potato Flakes, Slices  | 240  |
| Karr McGee Chemical Company   | Soda Springs | Vanadium Pentoxide     | 220  |
| Nonparcil Corp.               | Blackfoot    | Potato Flakes          | 212  |

### SOURCES

Michael, J.C., L.L. Johnson, and J.E. Anderson. "Potential for Heat Applications of Geothermal Resources." Idaho Department of Water Resources. Water Resources Bulletin No. 20. Geothermal Investigations in Idaho, Part 6, 1979.

Vollbrecht, J.L., and E. G. Gannett. "Geothermal Resources for Advanced Commercial Energy Applications." Task II Report. Volume IV. Idaho State Energy Research Center, Boise, 1979.

Soil Register Pages. Federal Geothermal Leasing, U.S. Dept. of the Interior, Bureau of Land Management, 1979.

Index File. State Geothermal Leases, Idaho Department of Lands, Bureau of Minerals, Division of Earth Resources, 1979.

Soil Register Pages. Federal Oil and Gas Leasing, U.S. Dept. of the Interior, Bureau of Land Management, 1979.

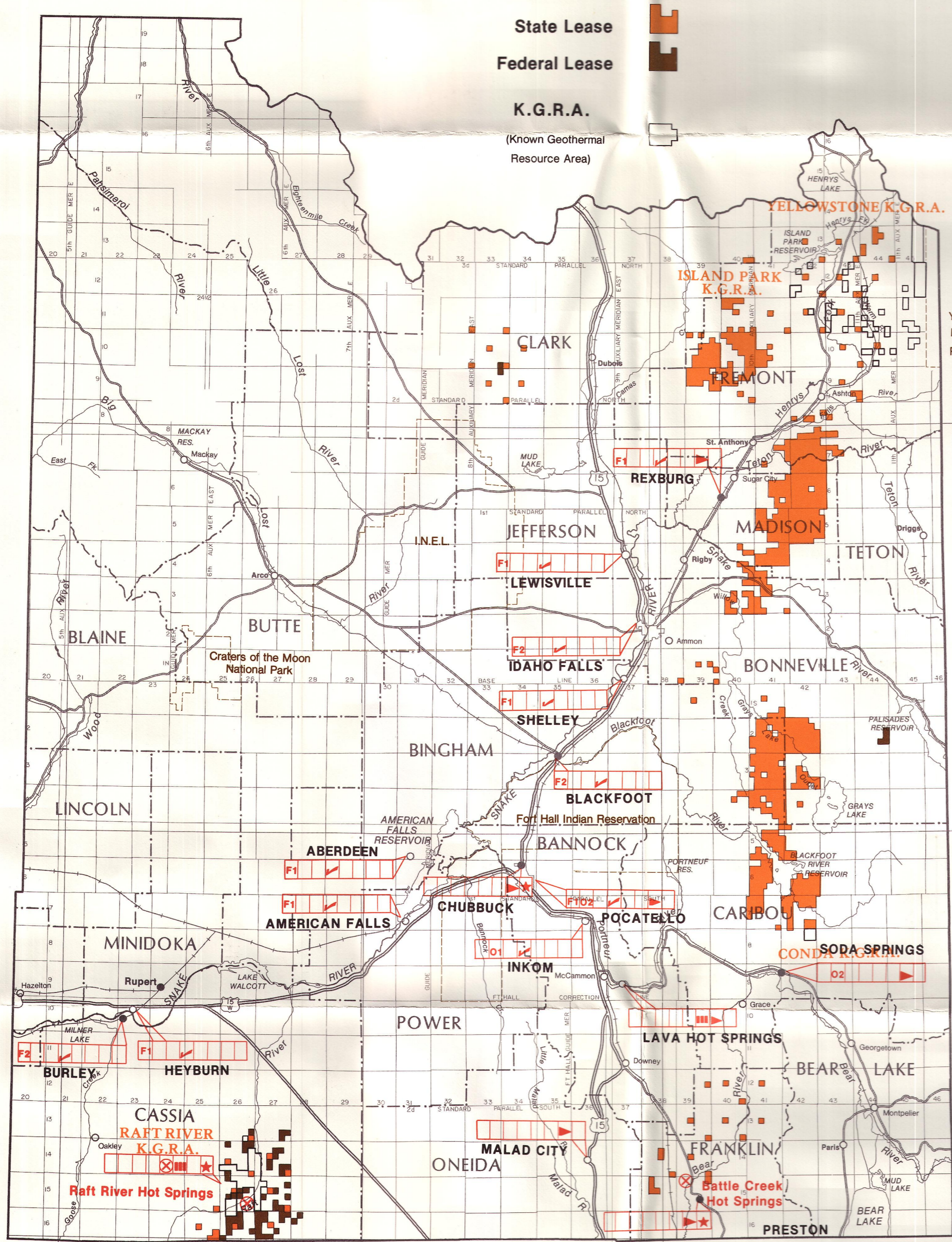
Index File. State Oil and Gas Leases, Idaho Department of Lands, Bureau of Minerals, Division of Earth Resources, 1979.

State of Idaho. Oil and Gas Survey. Idaho Department of Lands, Bureau of Minerals, Division of Earth Resources, 1979.

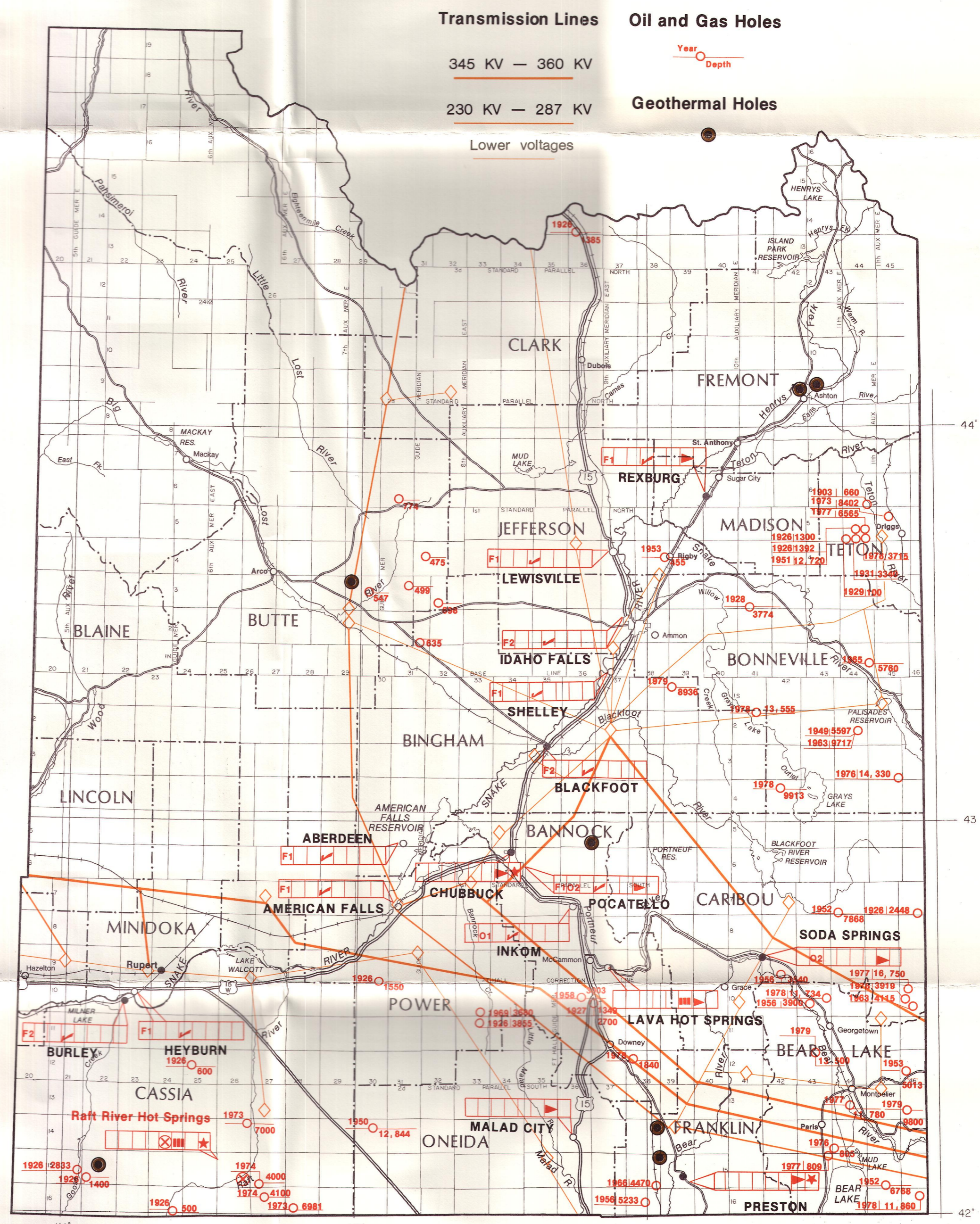
Soil Register Pages. Federal Phosphate Leasing, U.S. Department of the Interior, Bureau of Land Management, 1979.

The publication of this map was supported by the Pacific Northwest Regional Commission and the U.S. Department of Energy. The information is the result of tax-supported research and is such is not copyrighted.

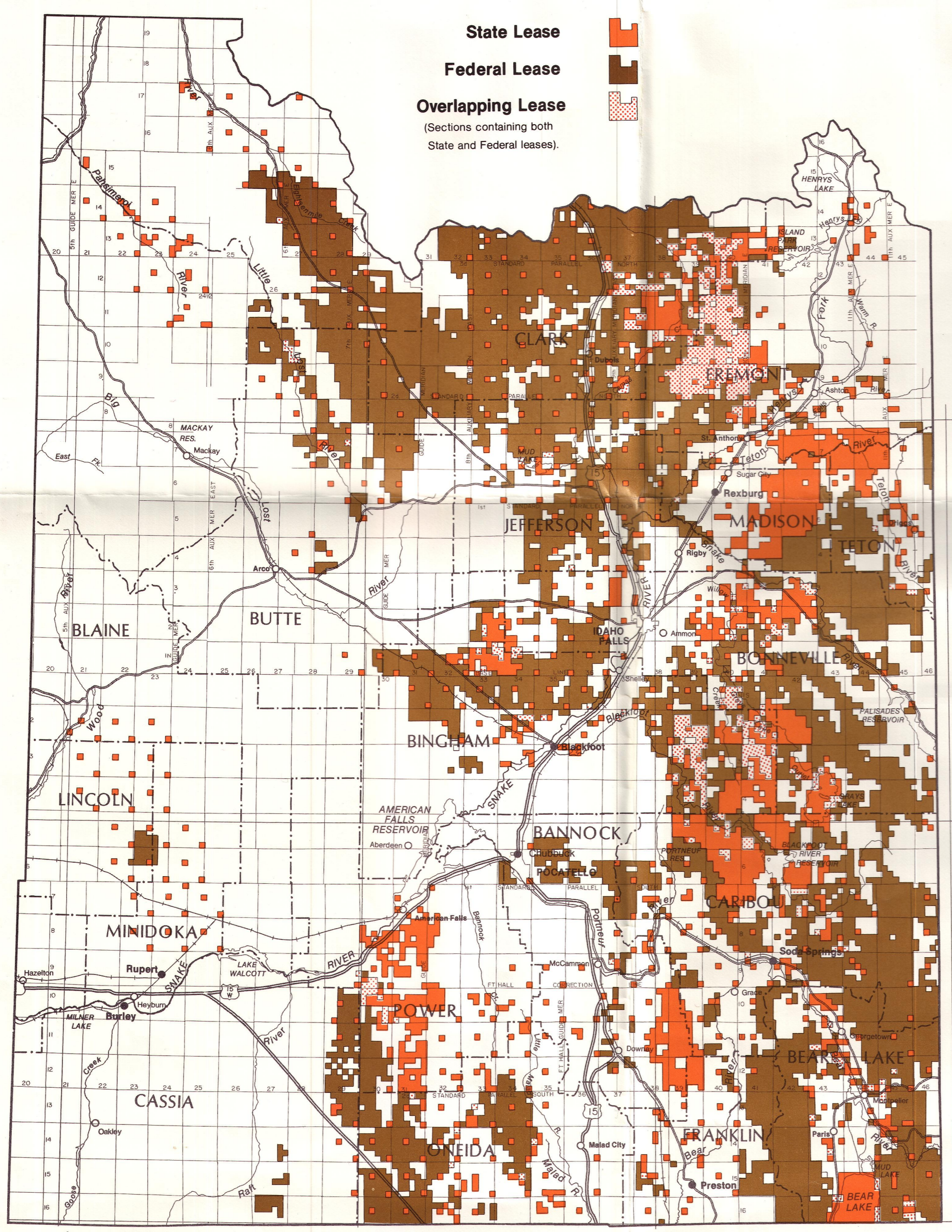
## GEOTHERMAL LEASES



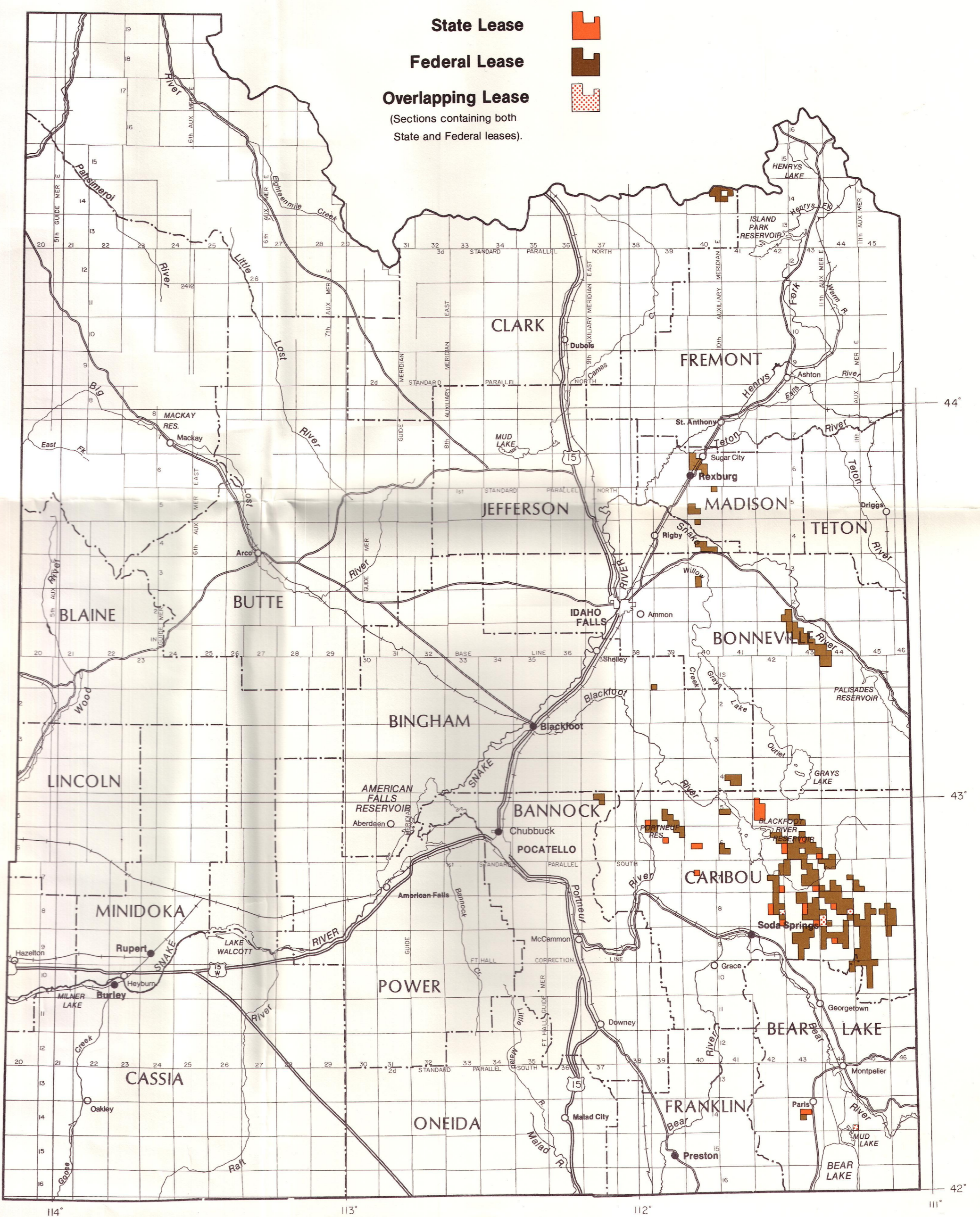
## EXPLORATION WELLS AND ENERGY TRANSMISSION CORRIDORS



## OIL AND GAS LEASES



## PHOSPHATE LEASES



The statements, findings, conclusions, and recommendations contained in this map are solely those of the Idaho Office of Energy and do not necessarily reflect the views of the Pacific Northwest Regional Commission or the U.S. Department of Energy.