

602528-DOC2

UNIVERSITY OF UTAH
DEPARTMENT OF CHEMISTRY
PLASMA PHYSICS LAB.
LARRY SCHUBERT

Schlumberger		DUAL INDUCTION - LATEROLOG WITH LINEAR CORRELATION LOG		
COMPANY MICHEL T. HALBOUY ET AL				
WELL J. N. JAMES #1				
FIELD WILDCAT				
COUNTY ADA		STATE IDAHO		
LOCATION 510' FEL & 825' FSL		Other Services: <input checked="" type="checkbox"/> BHC-GR <input checked="" type="checkbox"/> CNL-FDC-GR		
49	27	4N	1W	
Permanent Datum: GL		Elev. 2551		
Log Measured From: KB		20 Ft. Above Perm. Datum		
Drilling Measured From: KB		Elev.: K.B. 2571 D.F. --- G.L. 2551		
Date	7-10-76	8-20-76	9-21-76	9-22-76
Run No.	ONE	TWO	THREE	FOUR
Depth-Driller	3961	10035	14000	14000
Depth-Logger	3957	10056	13900	14015
Btm. Log Interval	3551	10050	13894	14009
Top Log Interval	770	3480	9800	13700
Casing-Driller	16" @ 785	10-3/4" 3974	10-3/4" 3974	10-3/4" 3974
Casing-Logger	785	3980	---	---
Bit Size	14-3/4"	9-7/8"	9-7/8"	9-7/8"
Type Fluid in Hole	LSND	FGM	FGM	FGM
Dens. Visc	8.9 47	10.0 70	10.6 60	10.4 84
pH Fluid Loss	8.5 10.0 ml	8.7 4.0 ml	10.4 8.2 ml	9.2 8.0 ml
Source of Sample	CIRCULATED FLOWLINE		FLOWLINE	
Rm @ Meas. Temp.	4.25 @ 84 F	2.52 @ 72 F	0.97 @ 74 F	0.20 @ 74 F
Rmf @ Meas. Temp.	5.54 @ 70 F	1.04 @ 70 F	0.60 @ 74 F	0.12 @ 74 F
Rmc @ Meas. Temp.	6.5 @ 84 F	3.78 @ 72 F	1.87 @ 74 F	0.39 @ 74 F
Source: Rmf Rmc	M C	M C	M C	M C
Rm @ BHT	2.5 @ 142 F	0.74 @ 244 F	0.21 @ 328 F	0.20 @ 346 F
Circulation - stopped	---	---	---	---
Logger on Bottom	---	---	---	---
Mix. Rec. Temp.	148	244	328	346
Equip. Location	7726 RS	8002 RS	7710 RS	7710 RS
Recorded By	PARKS	MARCHETTI	ELIAS	ELIAS
Witnessed By	MOSELEY	MOSELEY	MOSELEY	MOSELEY

Reproduced By
Electrical Log Services
MIDLAND, TEXAS 79701

REFERENCE K 1193X



49 COMPLETION RECORD

SPUD DATE _____

COMP DATE _____

DST RECORD _____

API NO. _____

CASING RECORD _____

PERFORATING RECORD _____

ACID. FRAC SHOT _____

IP _____

GOR GR

TP CP

REMARKS: _____

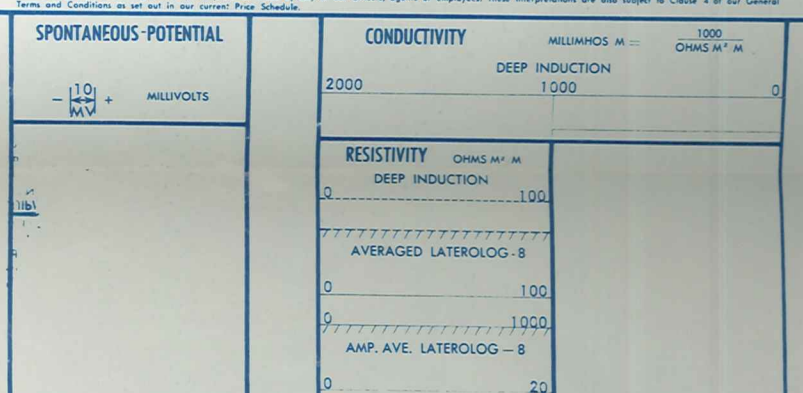
REPRODUCTION FOR RESALE PROHIBITED

FOLD HERE

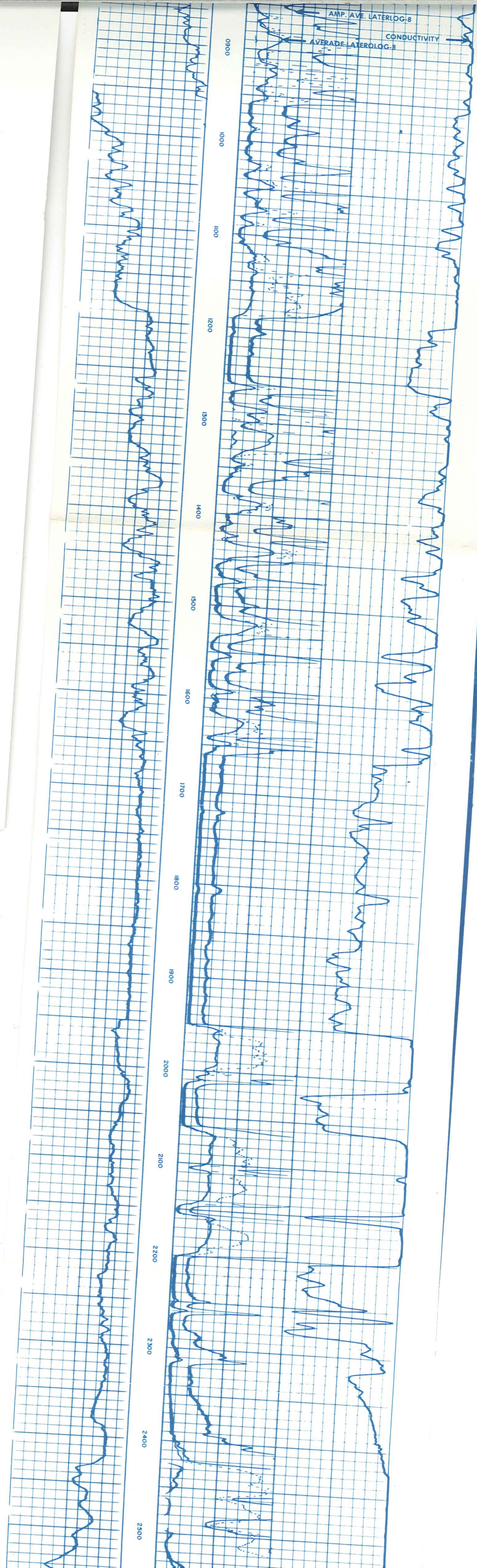
The well name, location and borehole reference data were furnished by the customer.

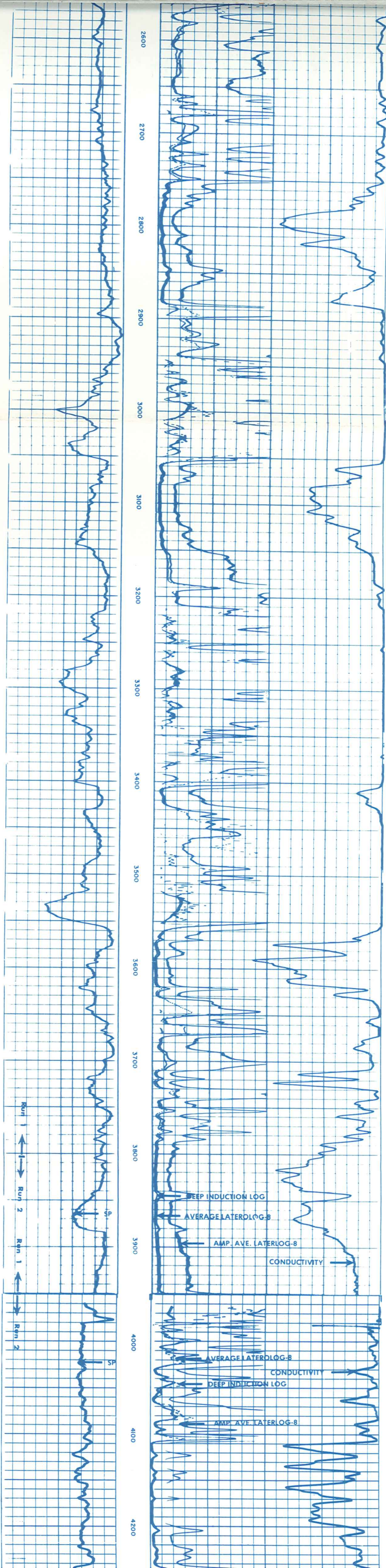
Run No.	ONE	TWO	THREE & FOUR	SCALE CHANGES
Service Order No.	25160	18871	25279	Type Log: _____ Depth: _____ Scale-Up Hole: _____ Scale-Down Hole: _____
Fluid Level	FULL	FULL	FULL	
Salinity - PPM CL	---	---	---	
Speed - F.P.M.	100	100	167	
EQUIPMENT DATA				
Panel No.	DC-332	DC-335	DC-349	
Cart No.	B-176	B-261	B-235	
Single No.	DB-119	DB-144	DB-318	
Mech. Panel No.	AC-207	AC-220	DC-349	
G.R. Panel No.	---	---	---	
G.R. Cart No.	---	---	---	
Tape Recorder - (TTR)	E-898	1826	E-898	
Depth Encoder - (DRE)	---	---	---	
Pressure Wheel (CPW)	---	---	---	
Type Centralizers	USED	ONE	NONE	
Stand Off - Inches	1-1/2	1-1/2	1.5	
CALIBRATION DATA				
Sonde Error - ILM	---	---	---	
Sonde Error - ILD	---	---	---	
G.R. BKG. - CPS	---	---	---	
G.R. Source - CPS	---	---	---	
LOGGING DATA				
S.E. Log - ILM	---	---	---	
S.E. Log - ILD	---	---	---	
S.E. - Set in Hole - Depth	---	---	---	
S.E. Corr. - Hole Size	---	---	---	
G.R. Scale per 100 Div.	---	---	---	
G.R. - T.C.	---	---	---	
G.R. Sens.	---	---	---	

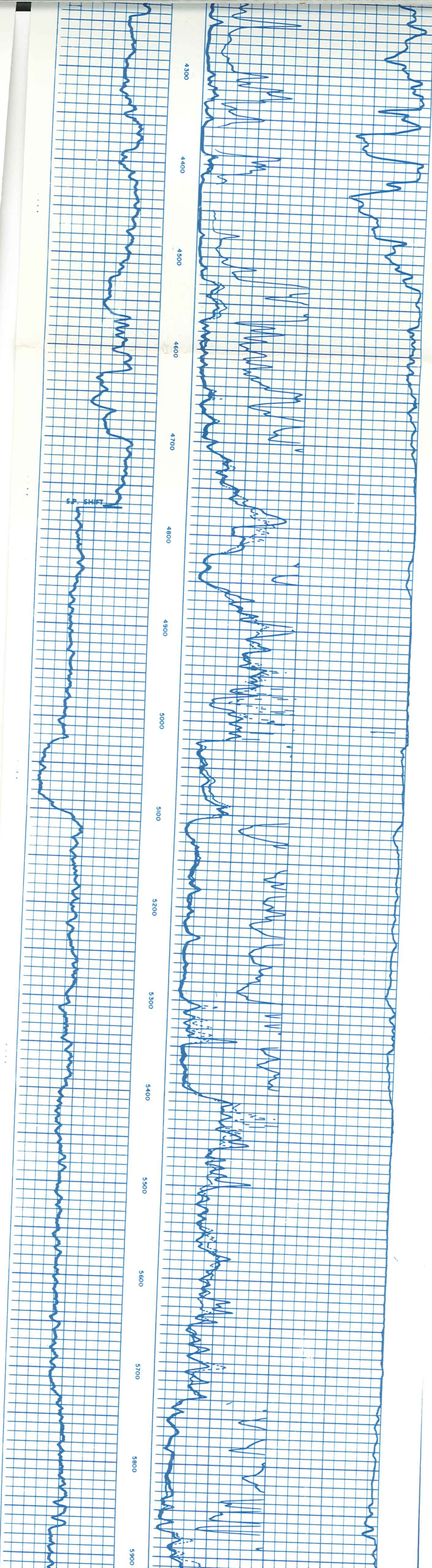
REMARKS: RUNS TWO, THREE, & FOUR - SURFACE DETERMINED SONDE ERRORS USED FOR 6FF40.

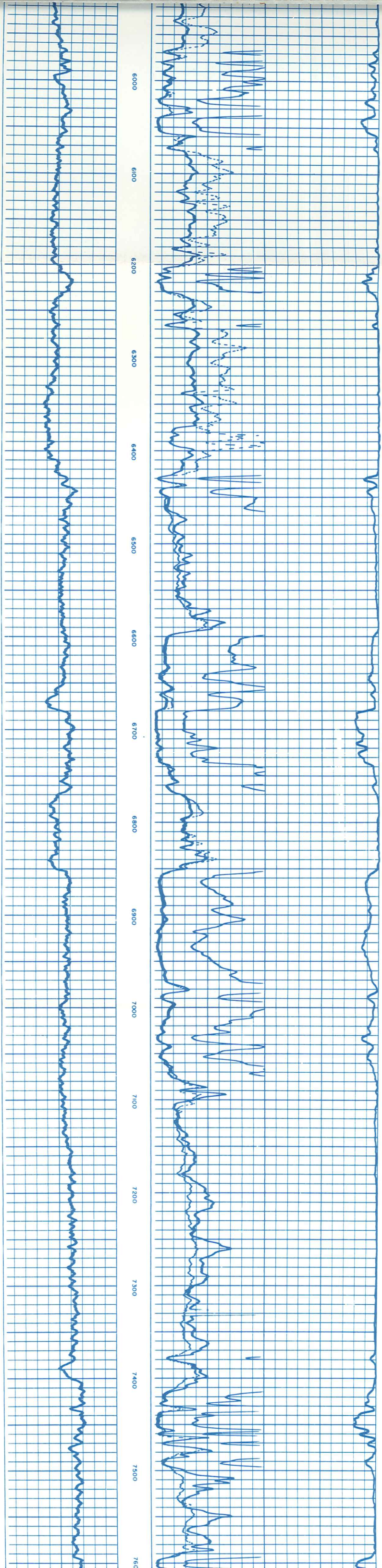


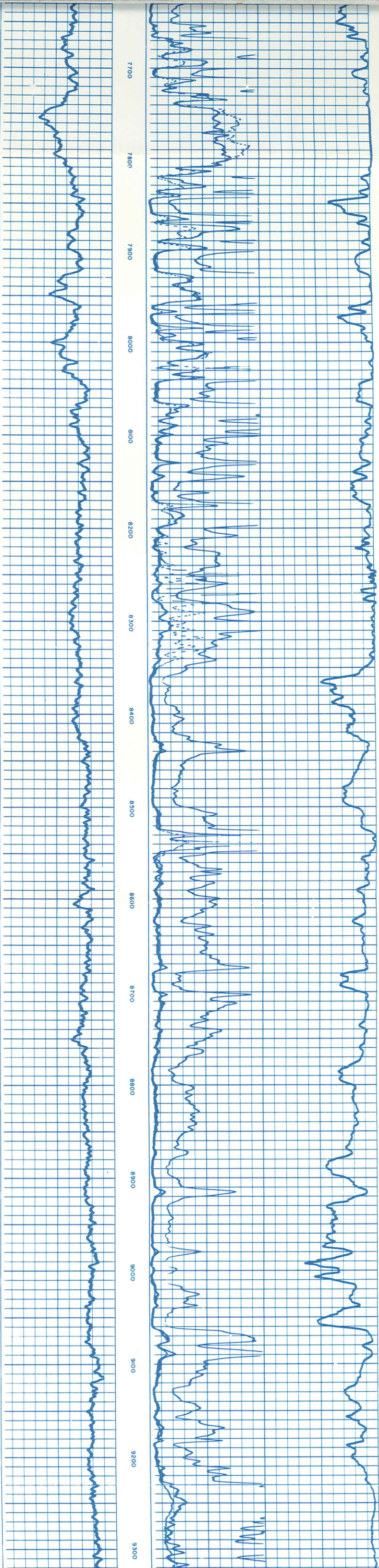
All interpretations are opinions based on inferences from electrical or other measurements and we cannot, and do not guarantee the accuracy or correctness of any interpretations, and we shall not, except in the case of gross or willful negligence on our part, be liable or responsible for any loss, costs, damages or expenses incurred or sustained by anyone resulting from any interpretation made by any of our officers, agents or employees. These interpretations are also subject to Clause 4 of our General Terms and Conditions as set out in our current Price Schedule.

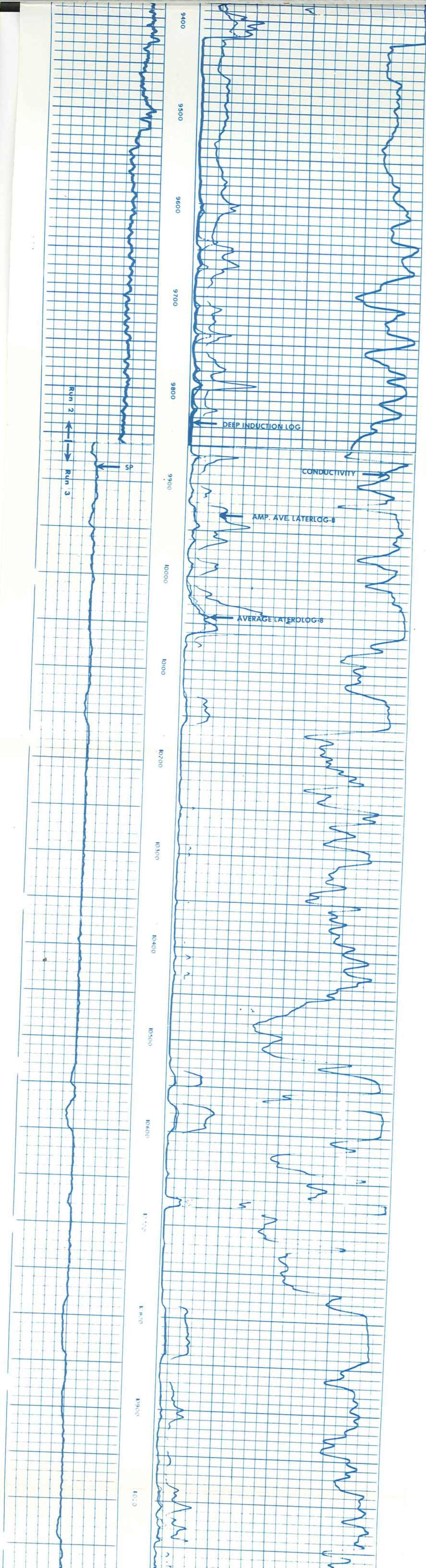


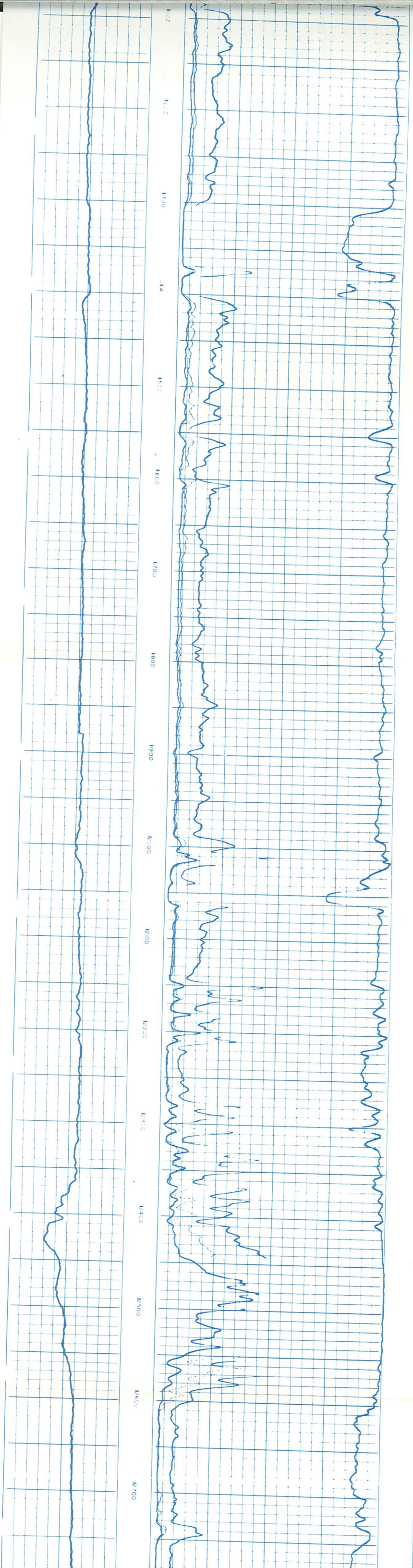


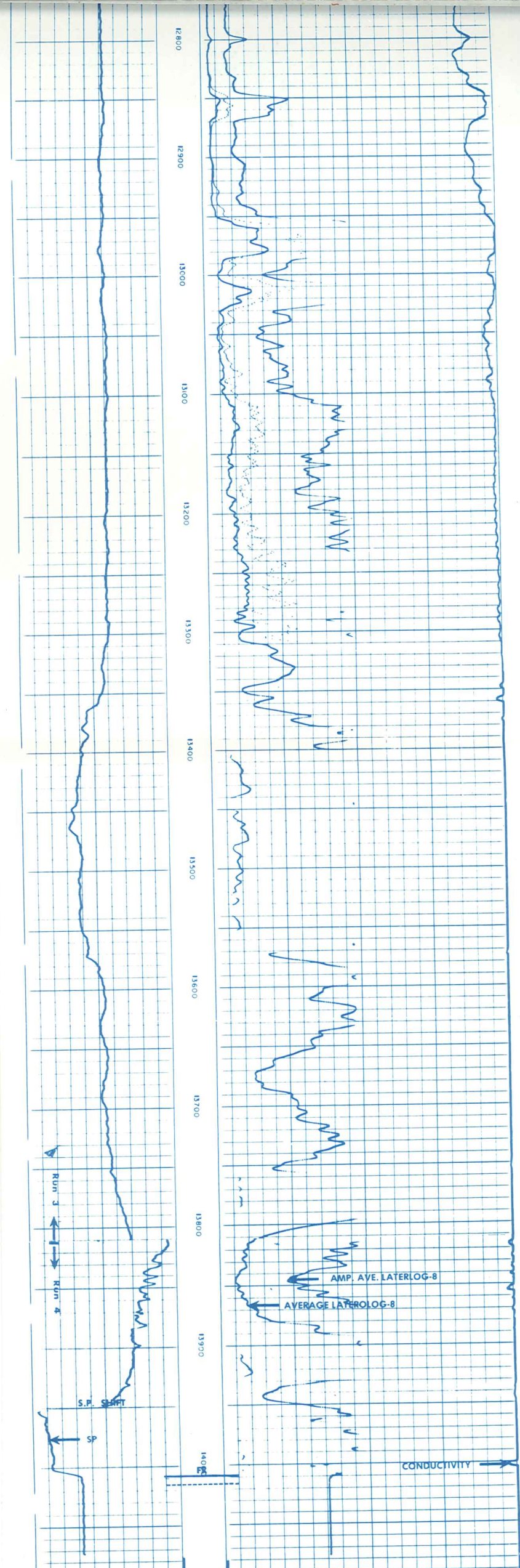










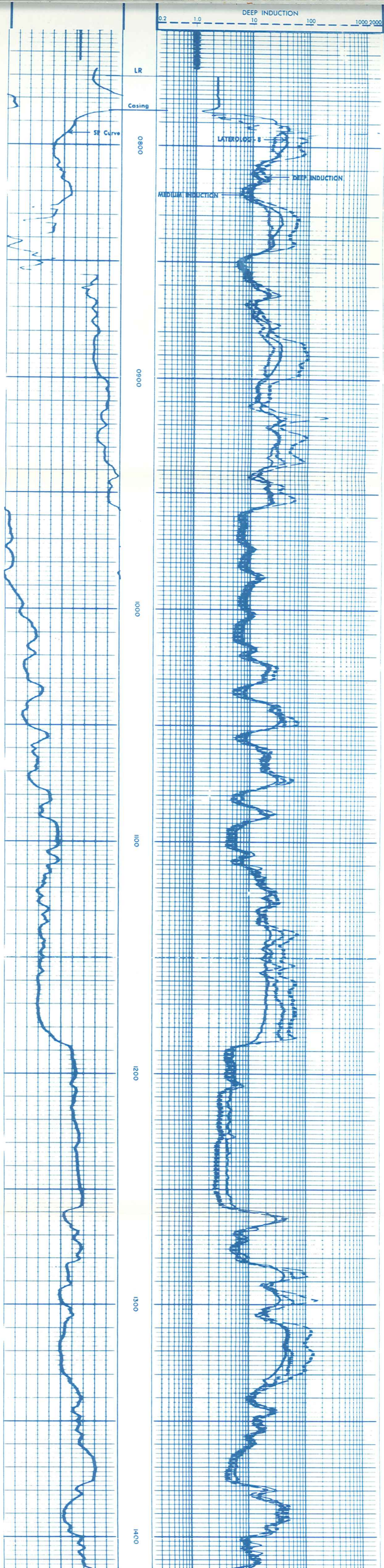


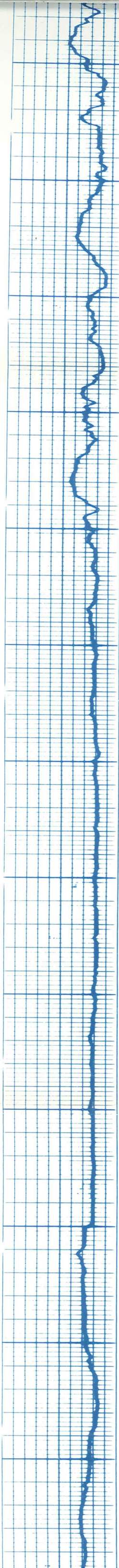
SPONTANEOUS-POTENTIAL -10 + MILLIVOLTS	RESISTIVITY OHMS M ² /M AVERAGE LATEROLOG-8	0 100
	DEEP INDUCTION	0 1000
DEPTHS	AMPLIFIED AVE. LATEROLOG-8	0 20
	CONDUCTIVITY MILLIMHOVS M DEEP INDUCTION	0 1000

COMPANY MICHEL T. HALBOUTY ET AL
 WELL J. N. JAMES #1
 FIELD WILDCAT
 COUNTY ADA STATE IDAHO
 SCHL. FR 14009
 SCHL. TD 14015
 DRLR. TD 14000
 Elev: KB 2571
 DF
 GL 2551

DETAIL LOG
5" 100"

SPONTANEOUS-POTENTIAL -10 + MILLIVOLTS	DEPTH	RESISTIVITY OHMS M ² /M LATEROLOG-8	0.2 1.0 10 100 1000 2000
		DEEP INDUCTION	





1500

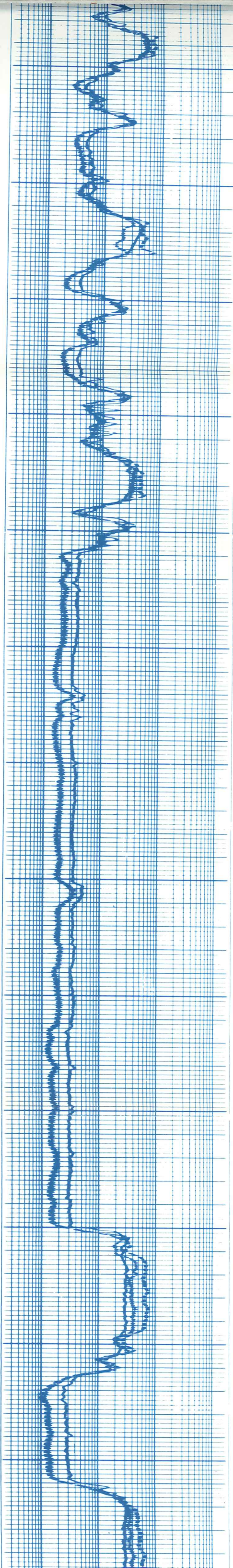
1600

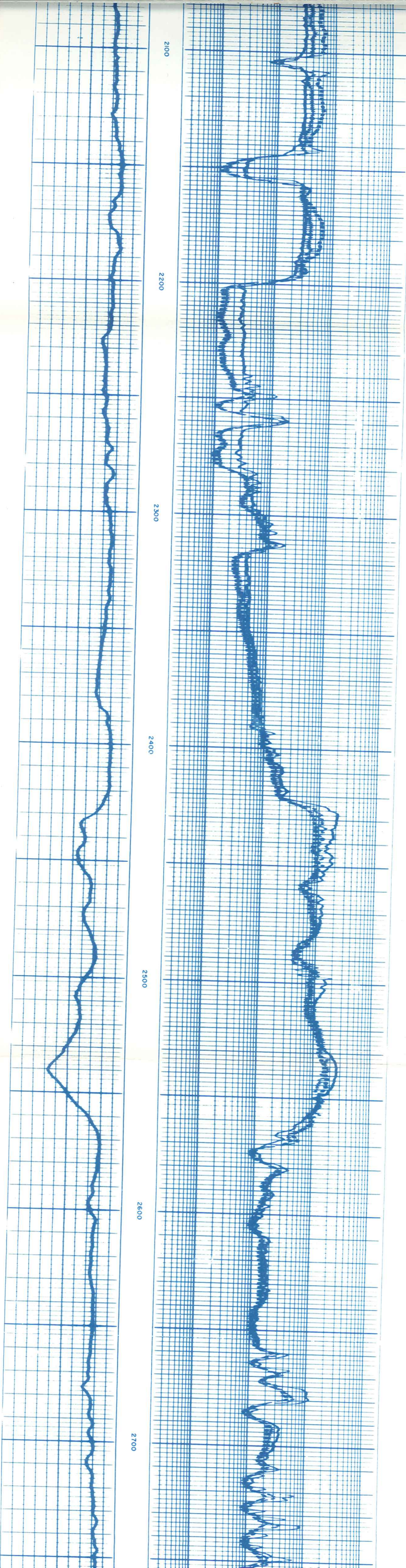
1700

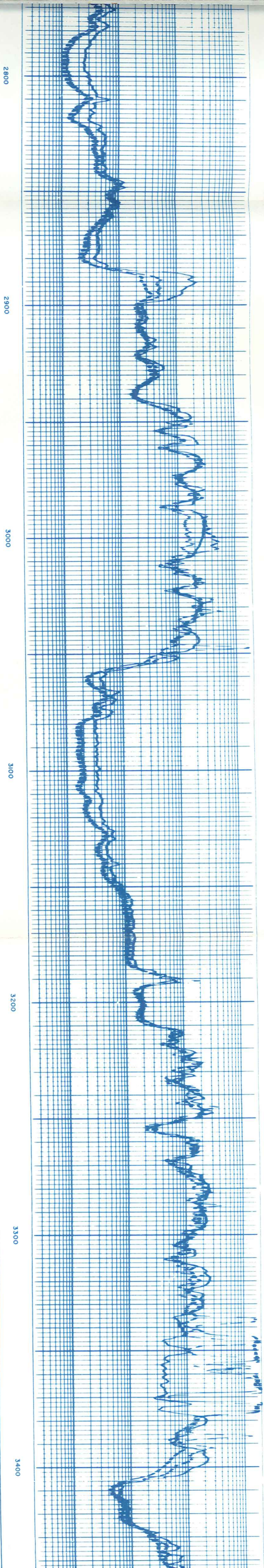
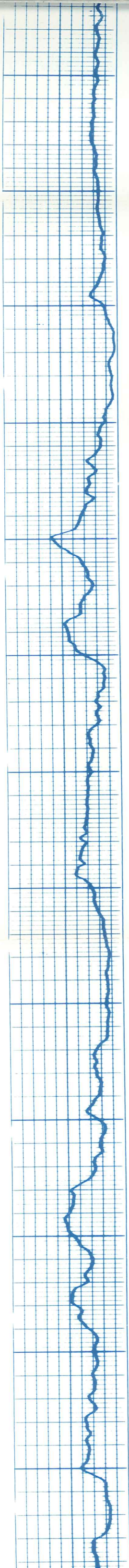
1800

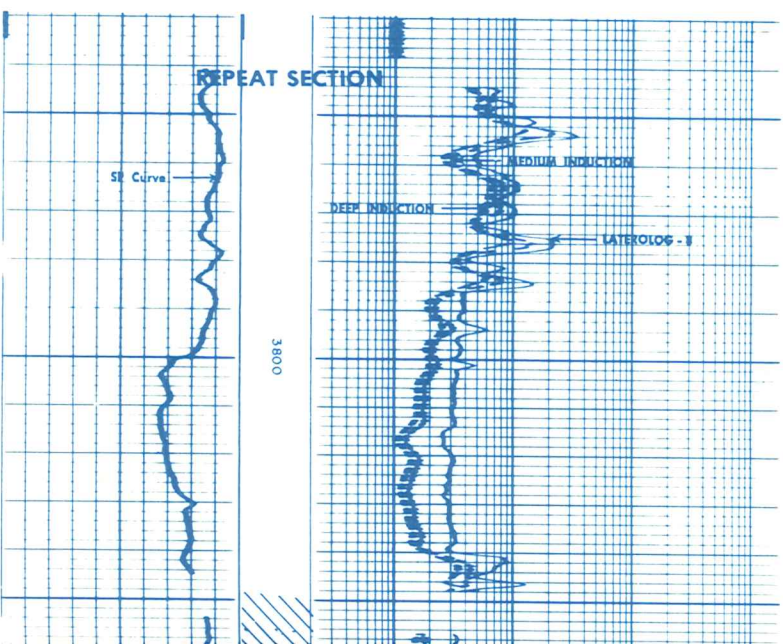
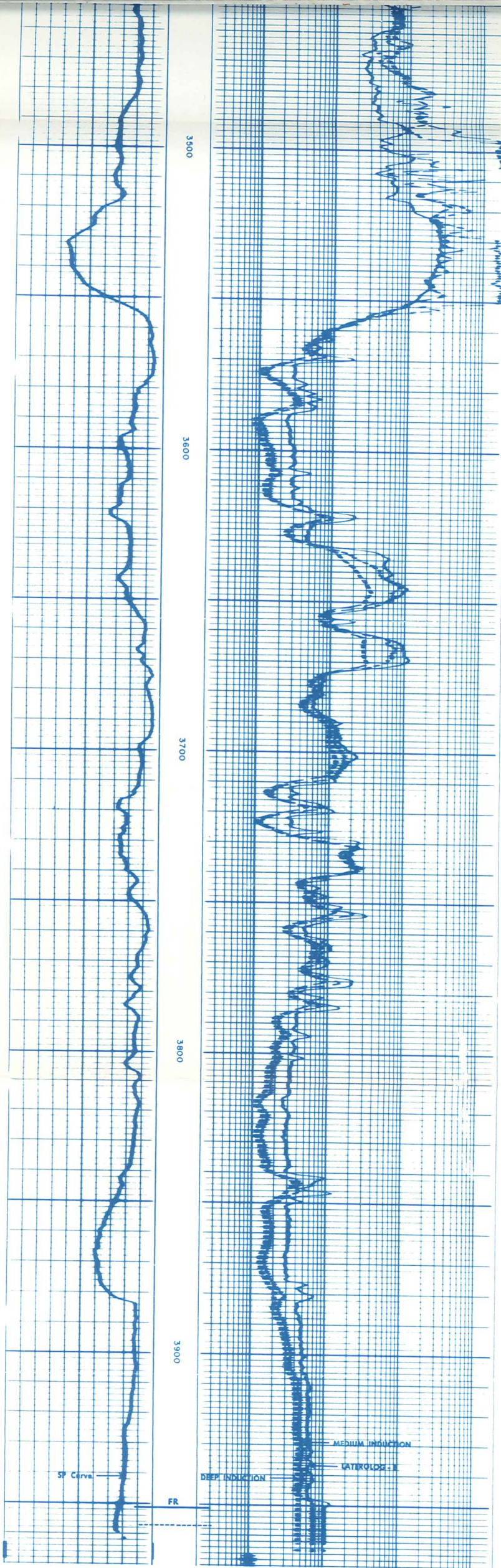
1900

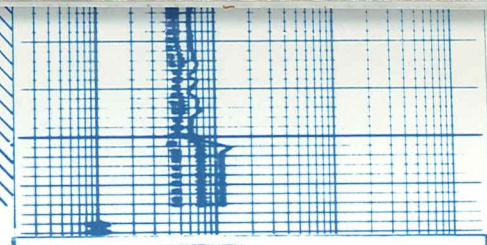
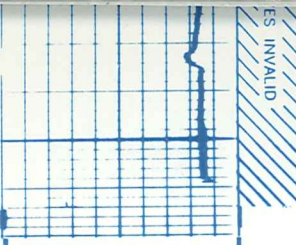
2000









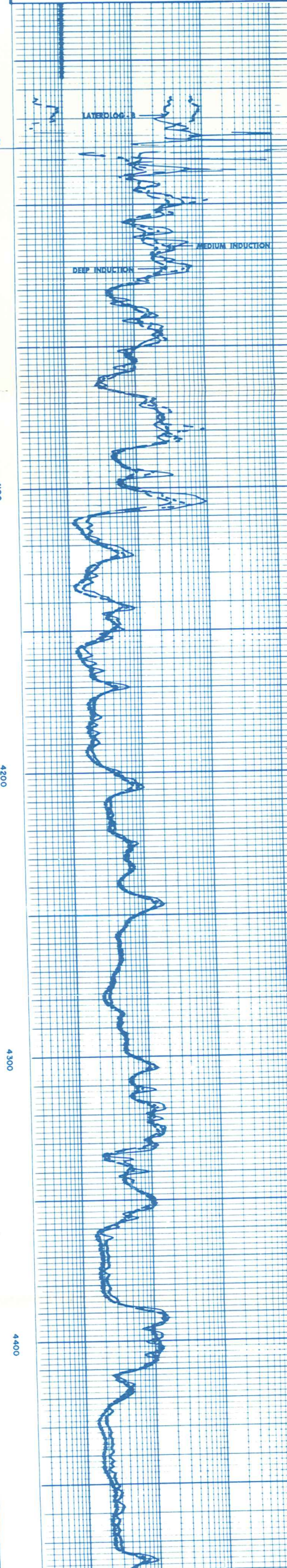
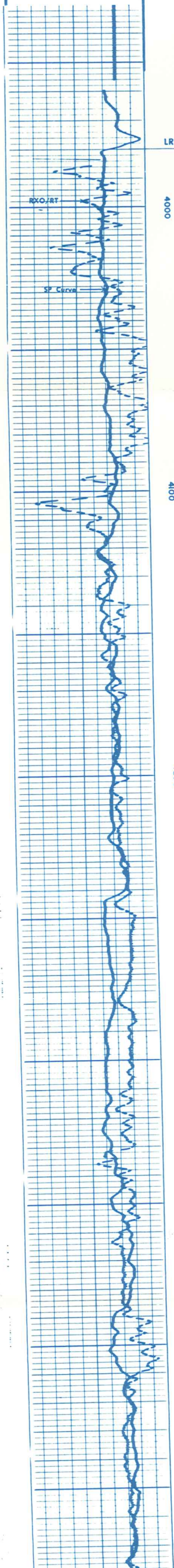


SPONTANEOUS-POTENTIAL
 -10 + MILLIVOLTS
 DEPTH

RESISTIVITY OHMS M²/M
 LATEROLOG - 8
 0.2 1.0 10 100 1000 2000
 MEDIUM INDUCTION
 0.2 1.0 10 100 1000 2000
 DEEP INDUCTION
 0.2 1.0 10 100 1000 2000

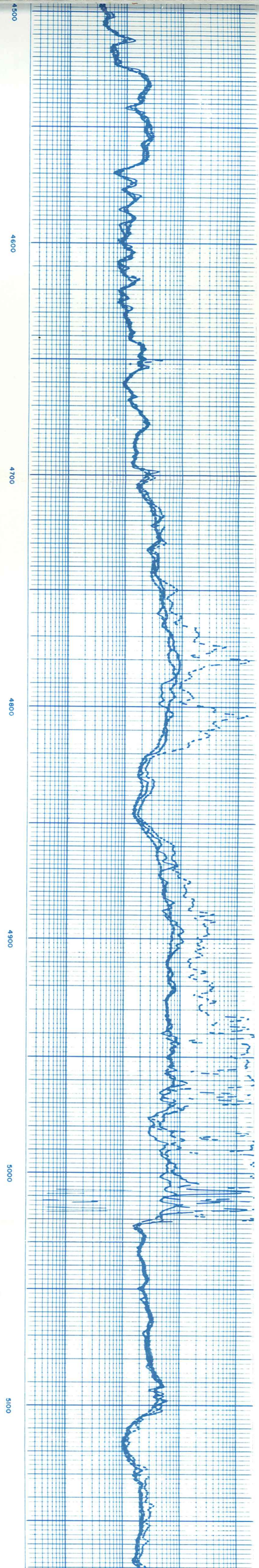
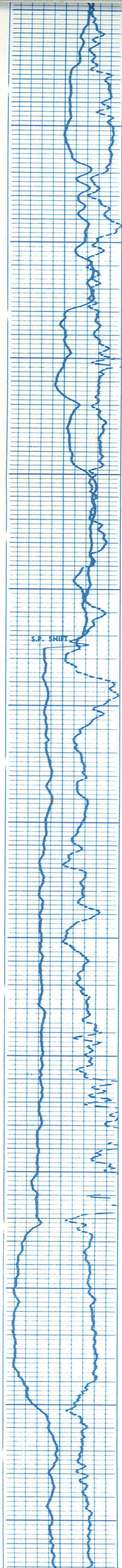
SPONTANEOUS-POTENTIAL
 -10 + MILLIVOLTS
 (RXO/RT) QL
 DEPTH

RESISTIVITY OHMS M²/M
 LATEROLOG - 8
 0.2 1.0 10 100 1000 2000
 MEDIUM INDUCTION
 0.2 1.0 10 100 1000 2000
 DEEP INDUCTION
 0.2 1.0 10 100 1000 2000



DEPTH
 4000
 4100
 4200
 4300
 4400

ES INVALID



4500

4600

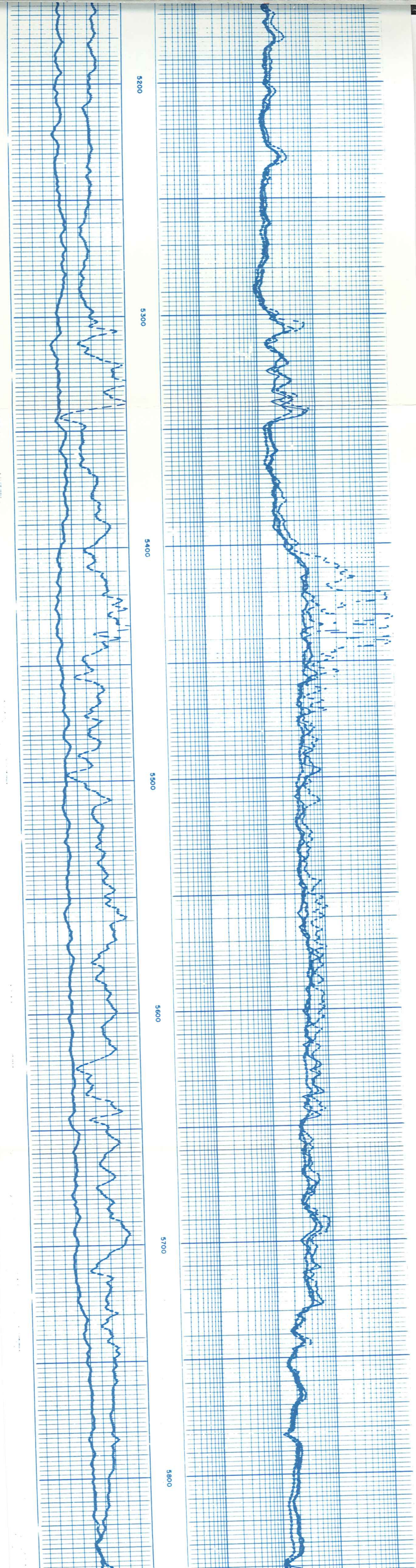
4700

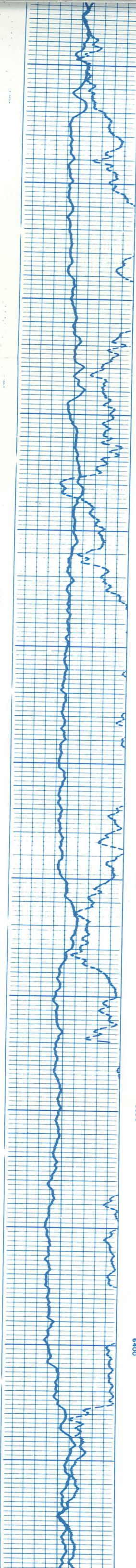
4800

4900

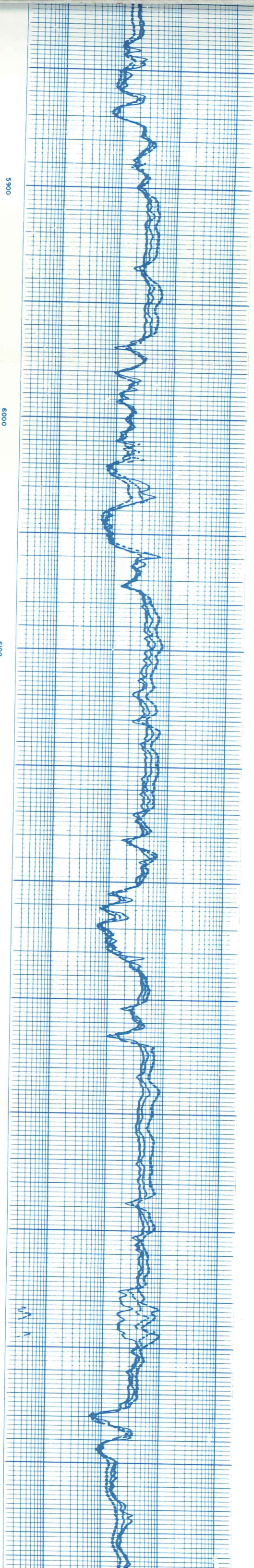
5000

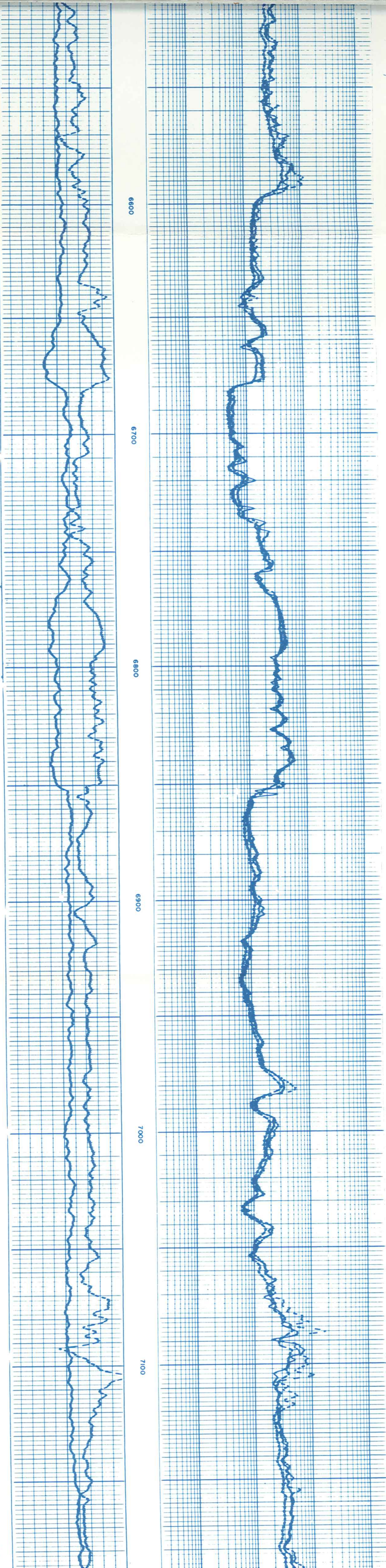
5100

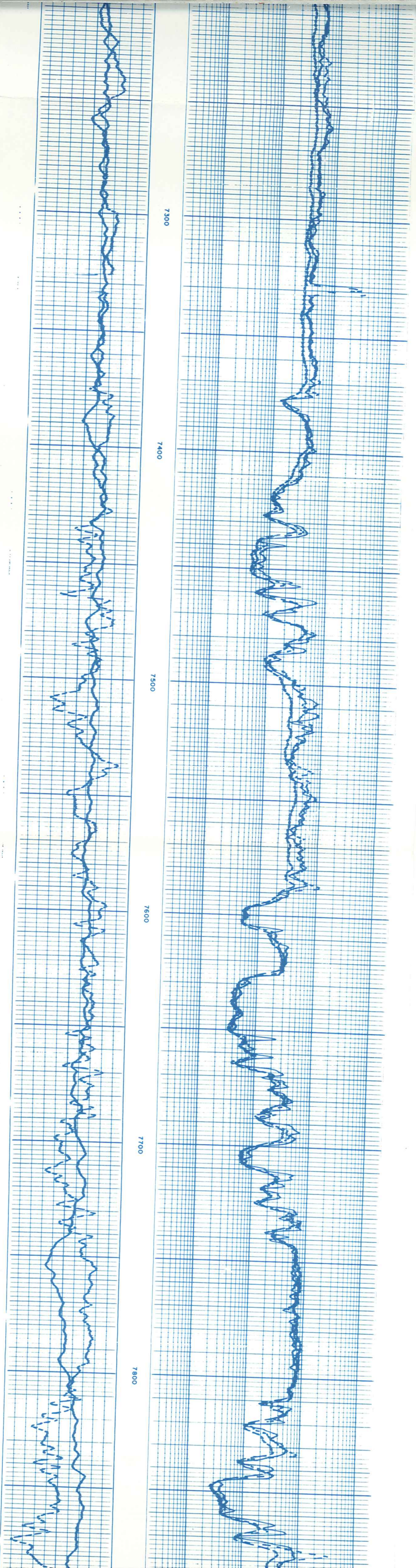


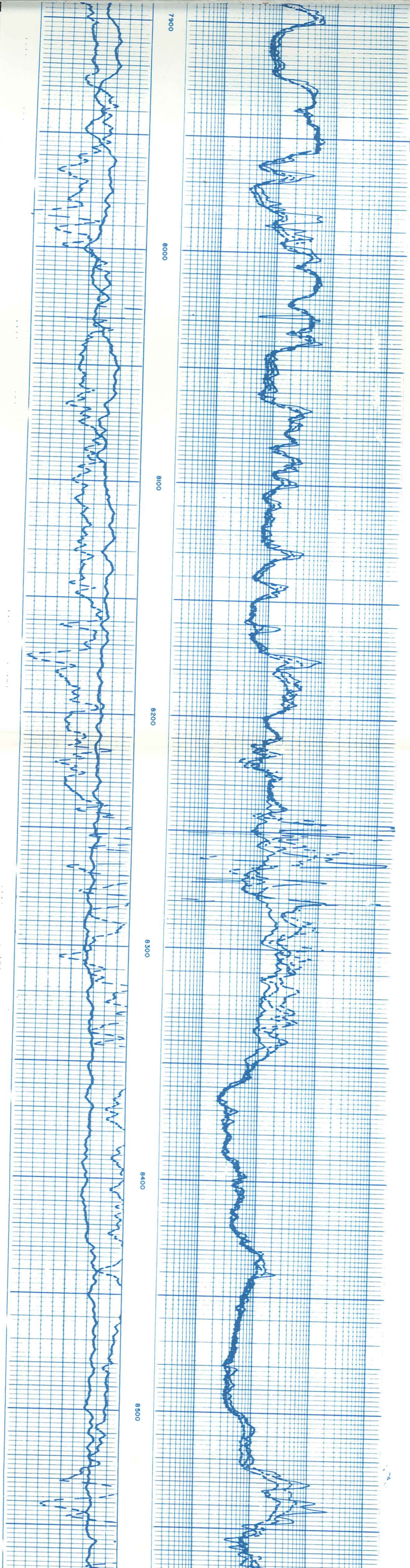


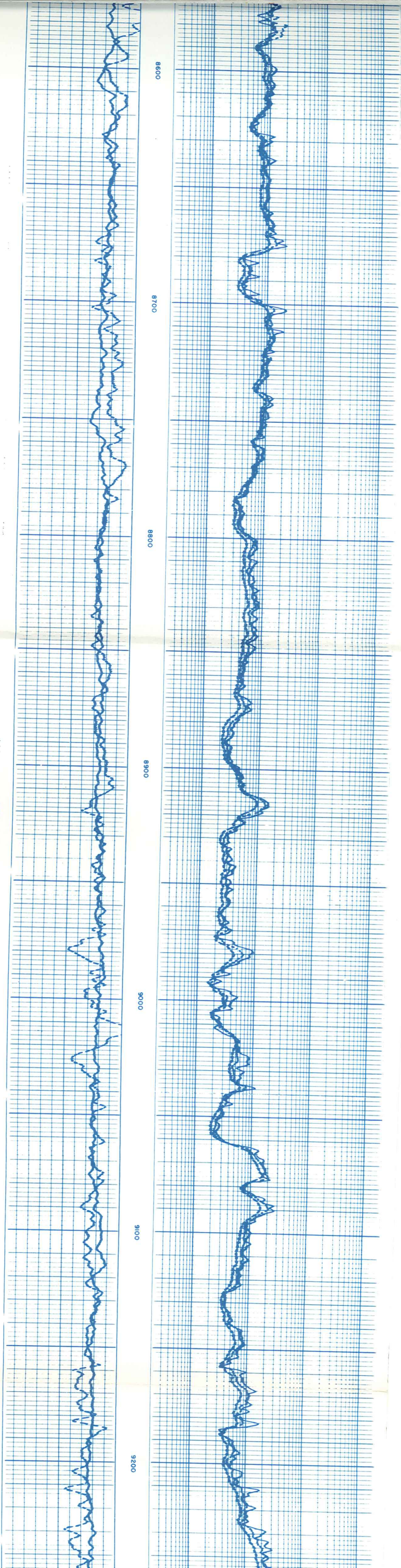
6400 0009 6300 0028 6000 0019 0003 0065

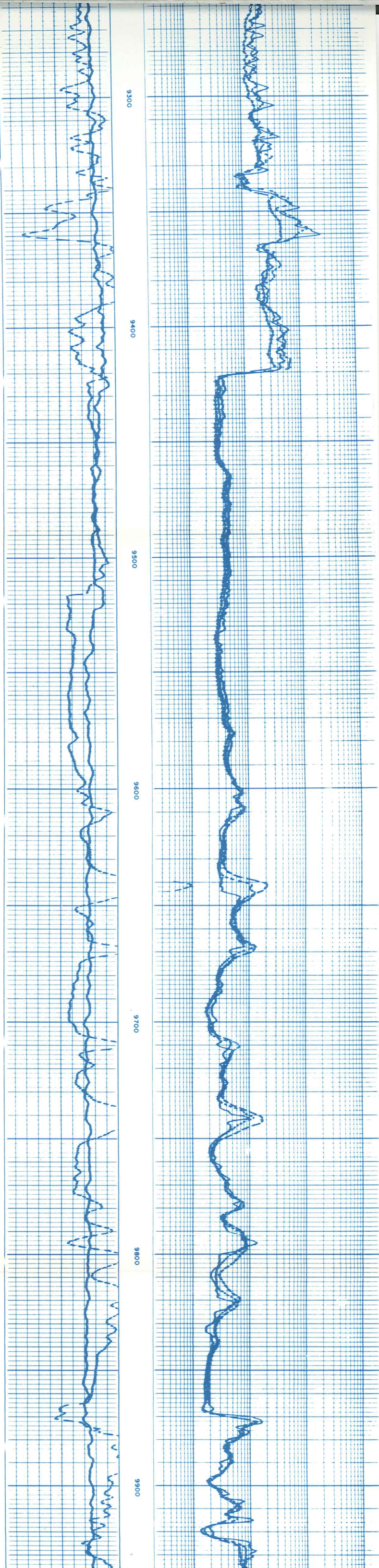


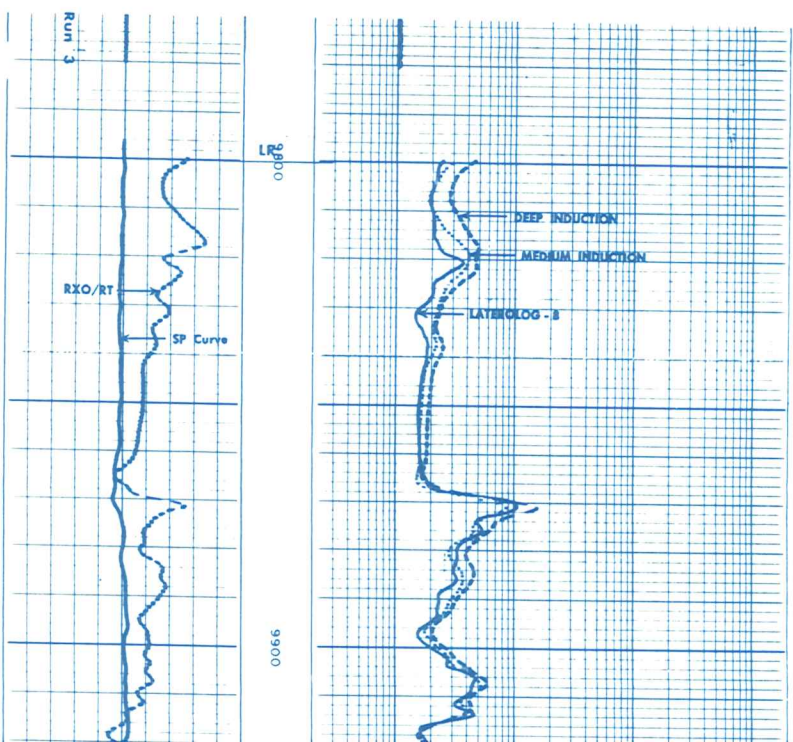
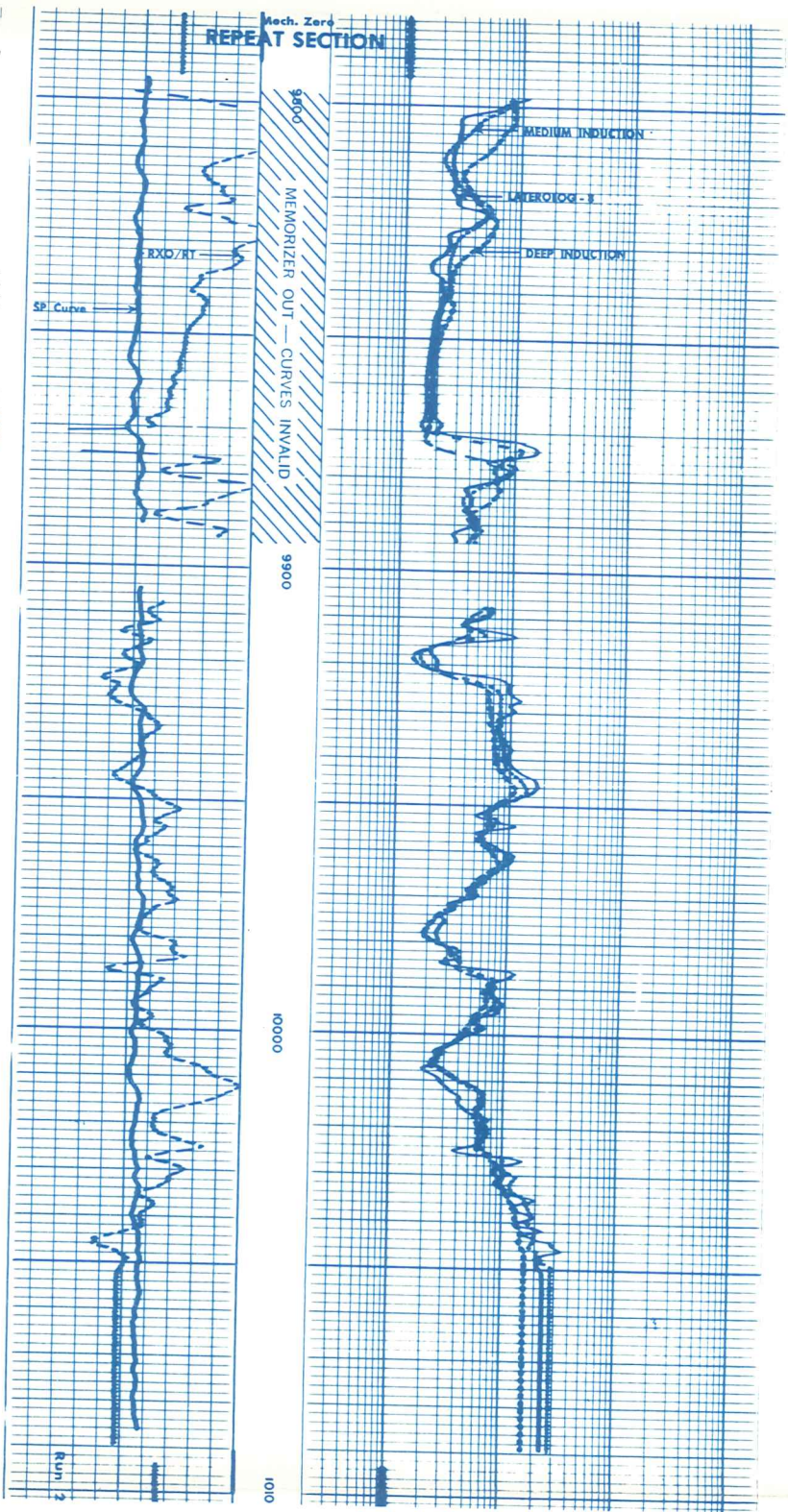
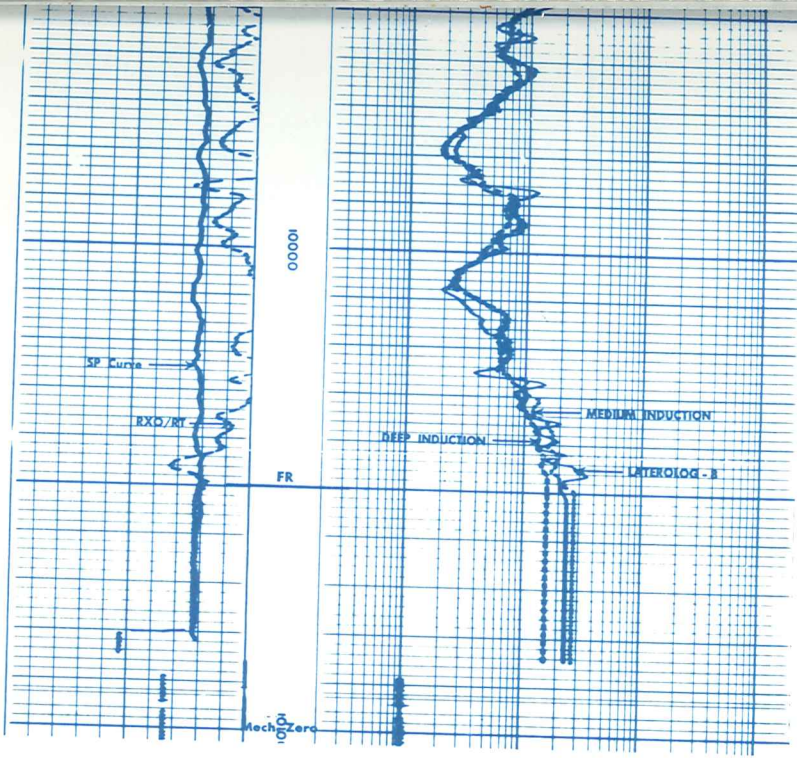






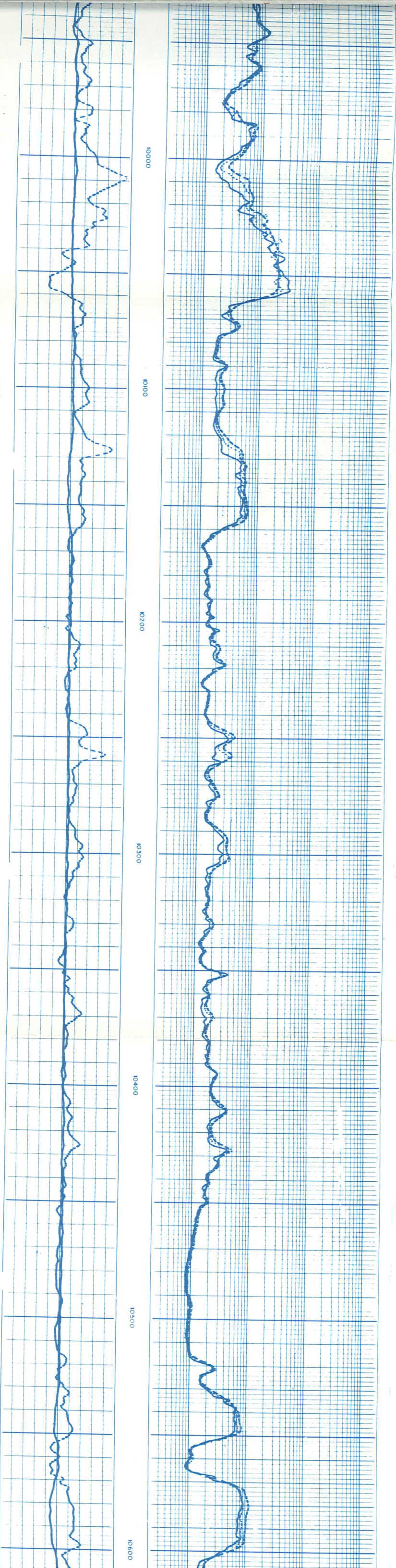


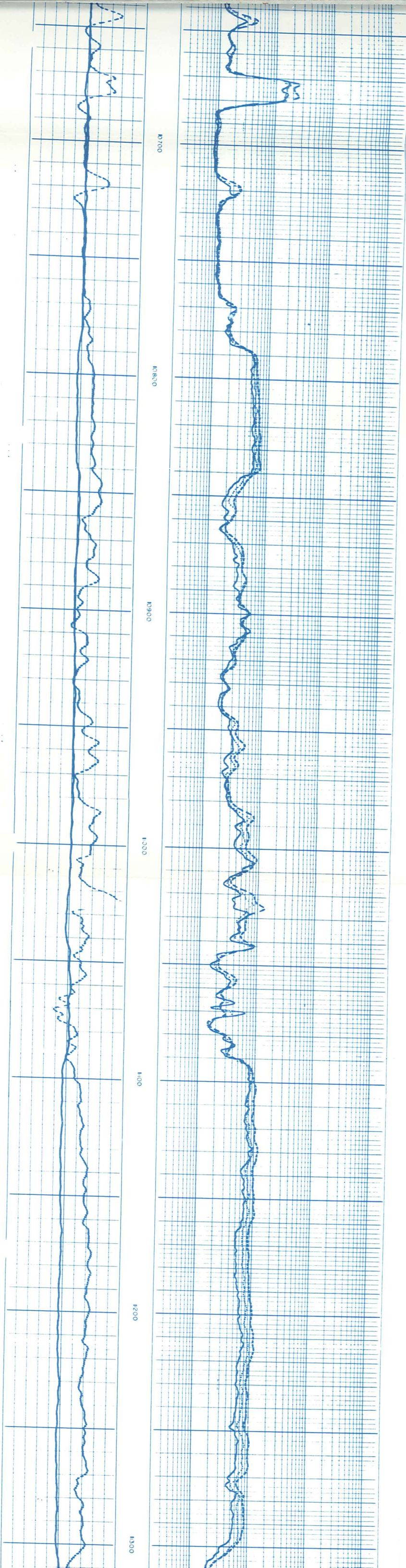


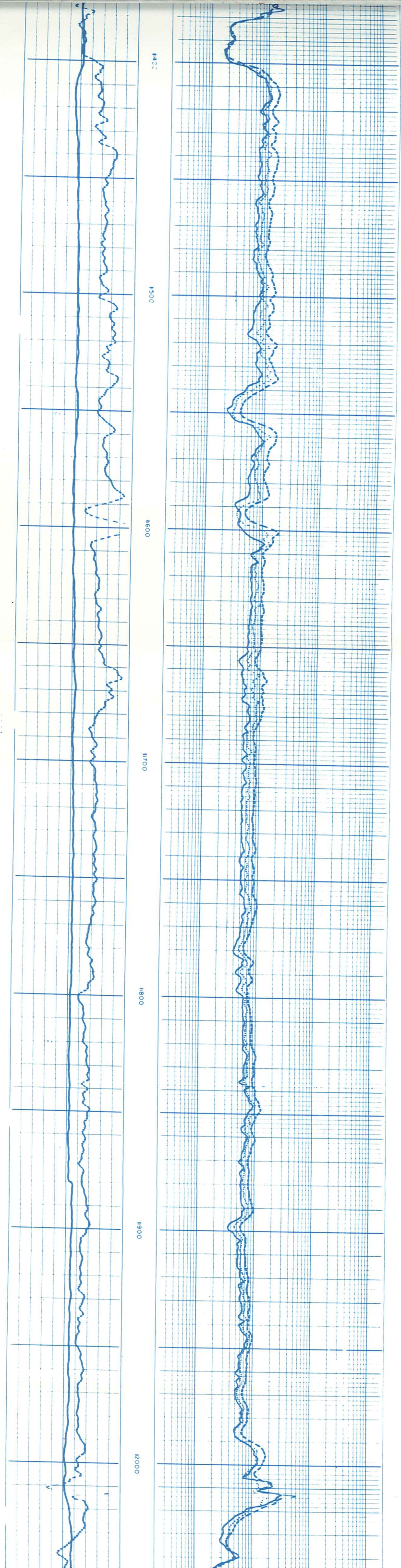


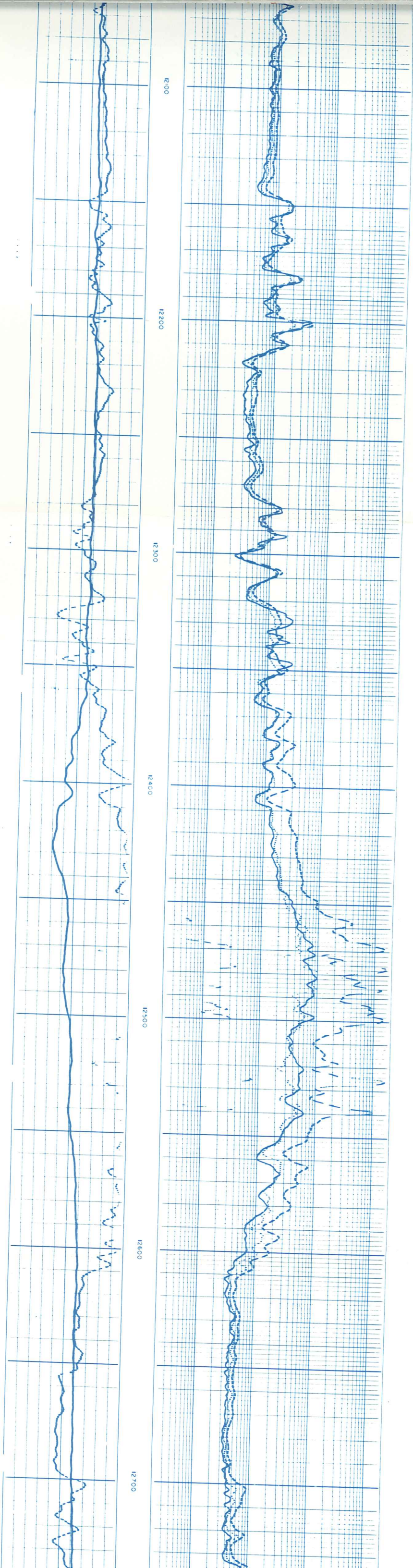
Run 2

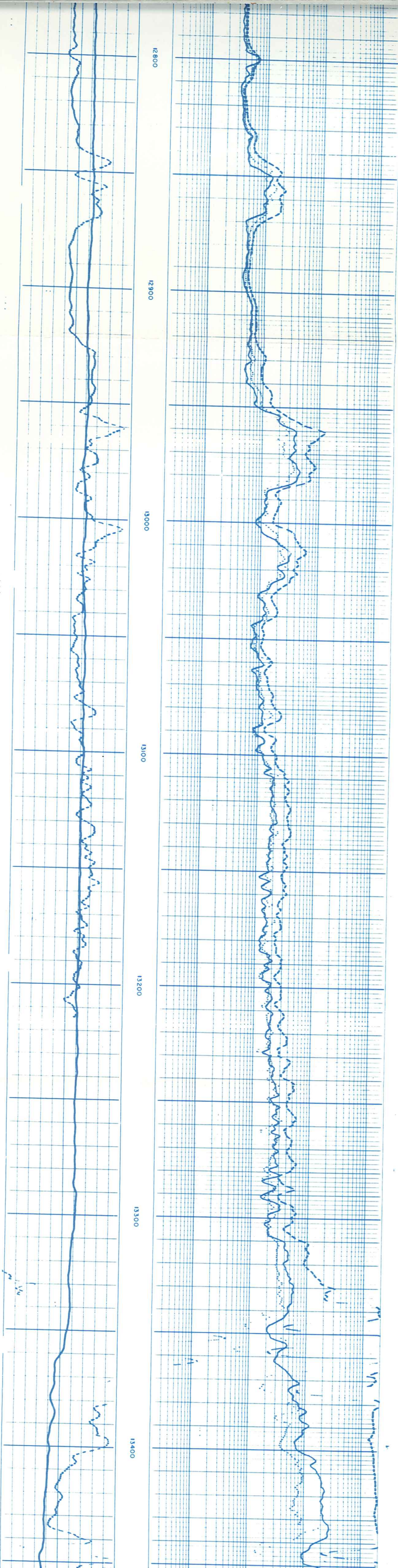
Run 3

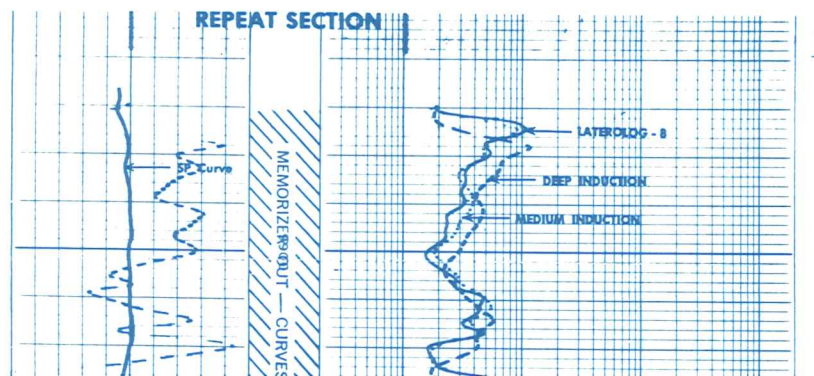
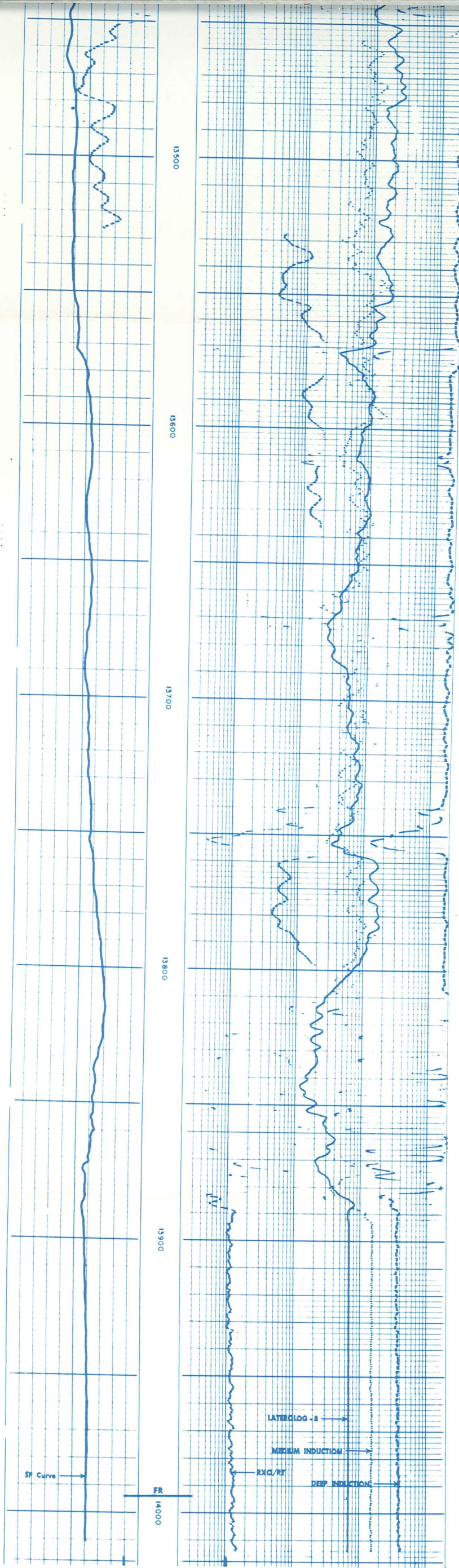


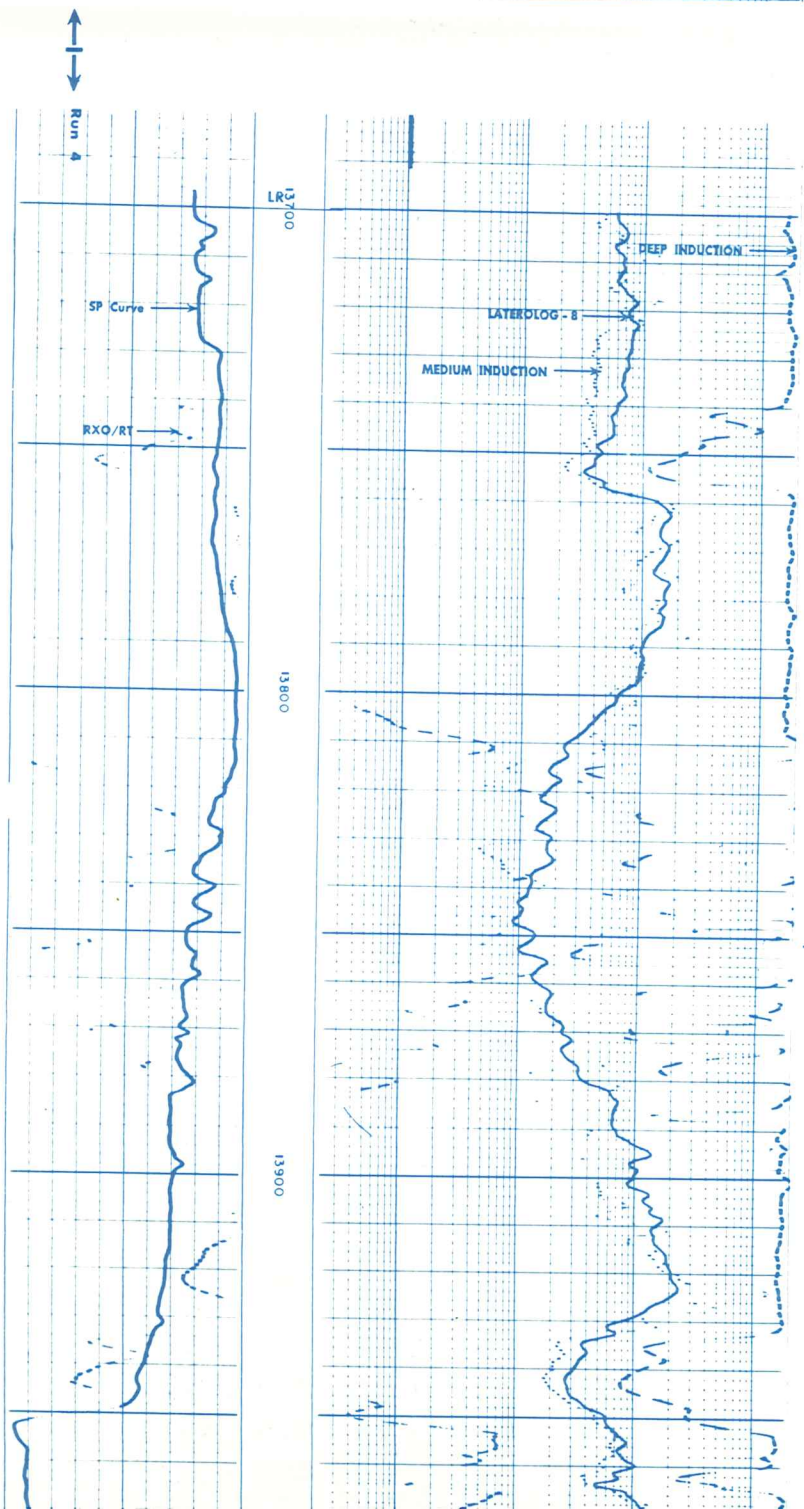
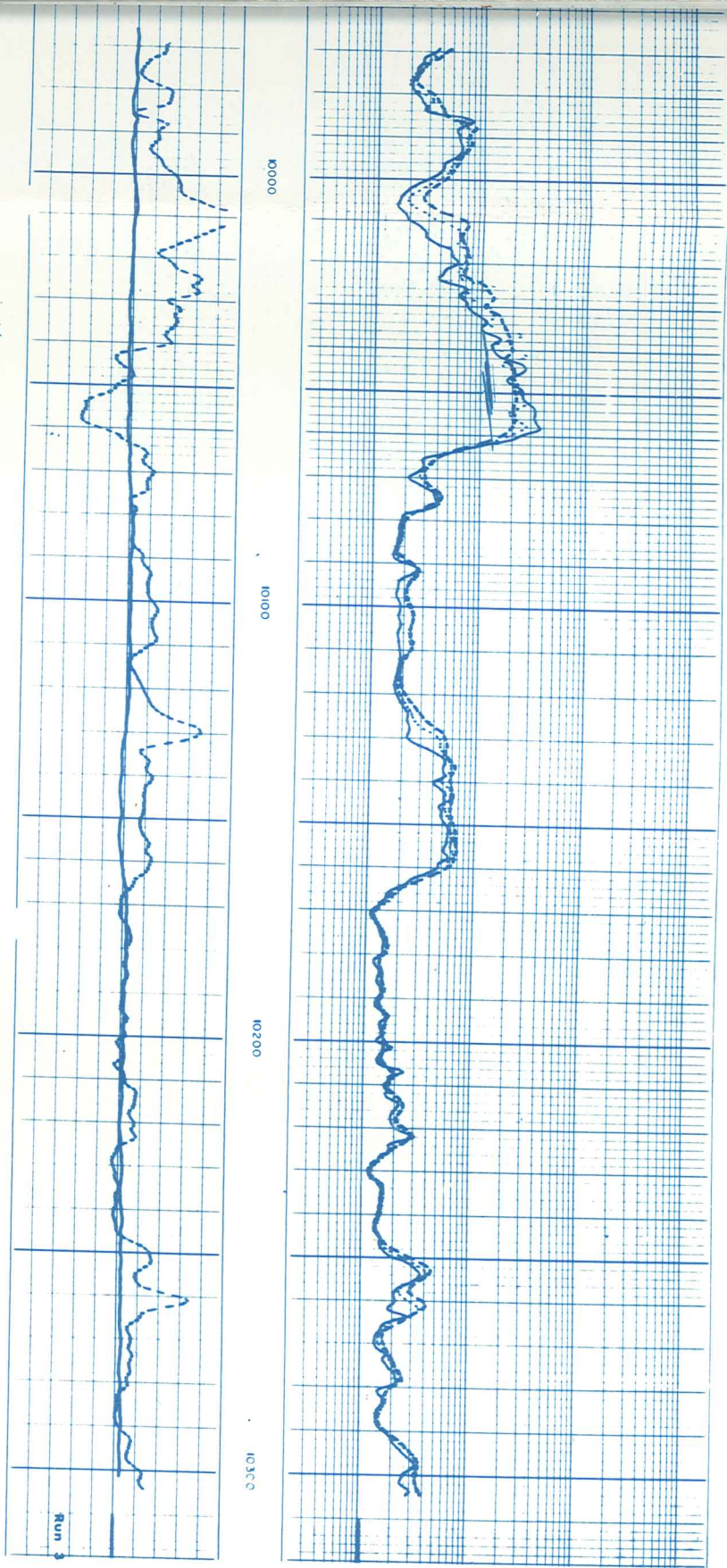


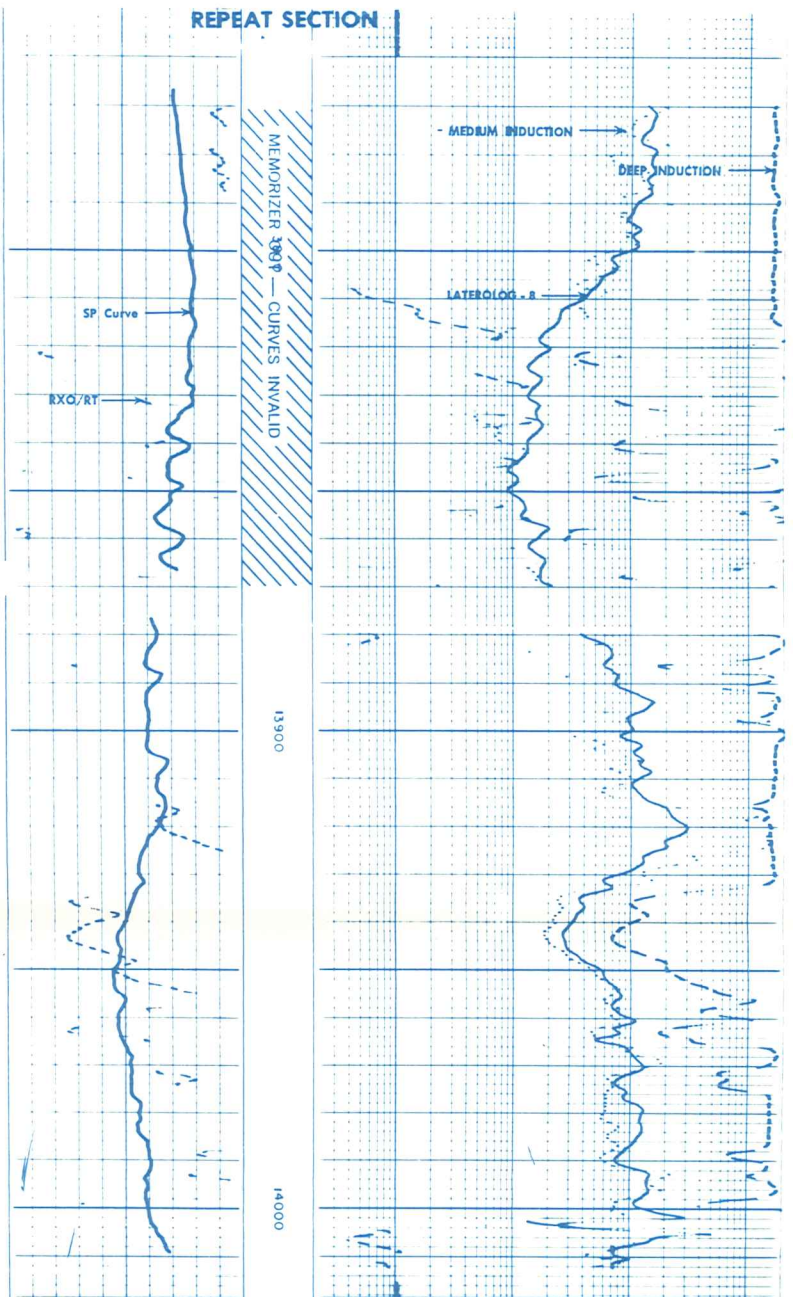
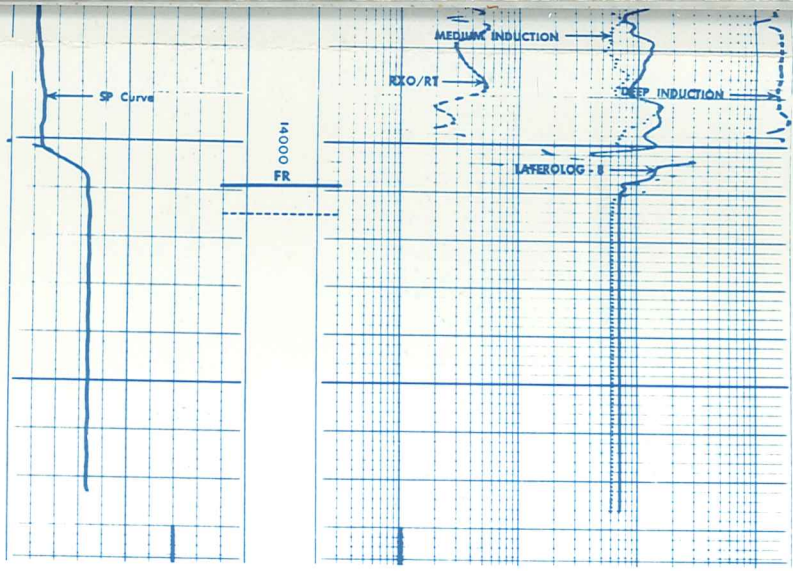






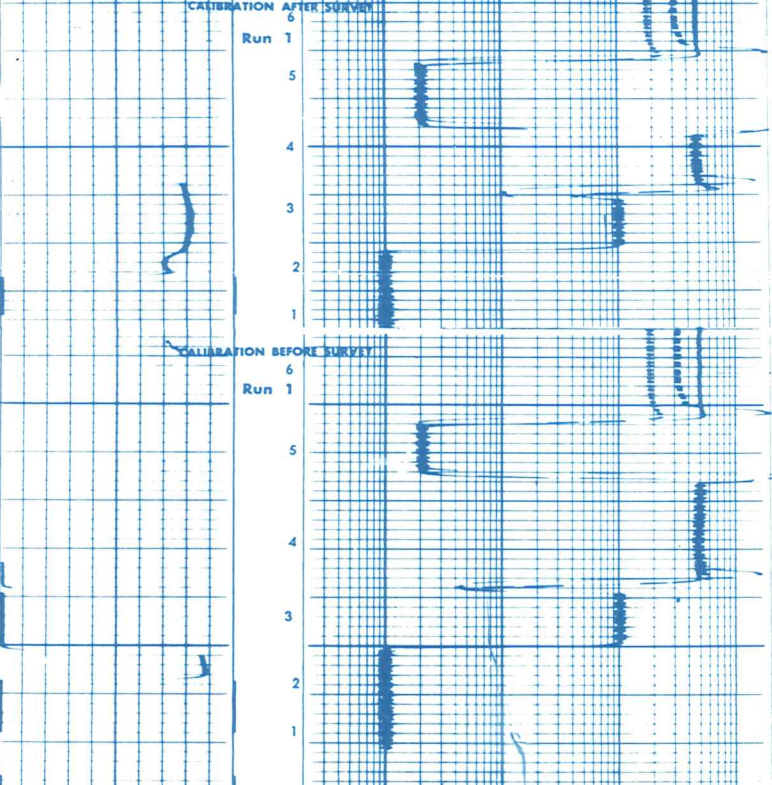






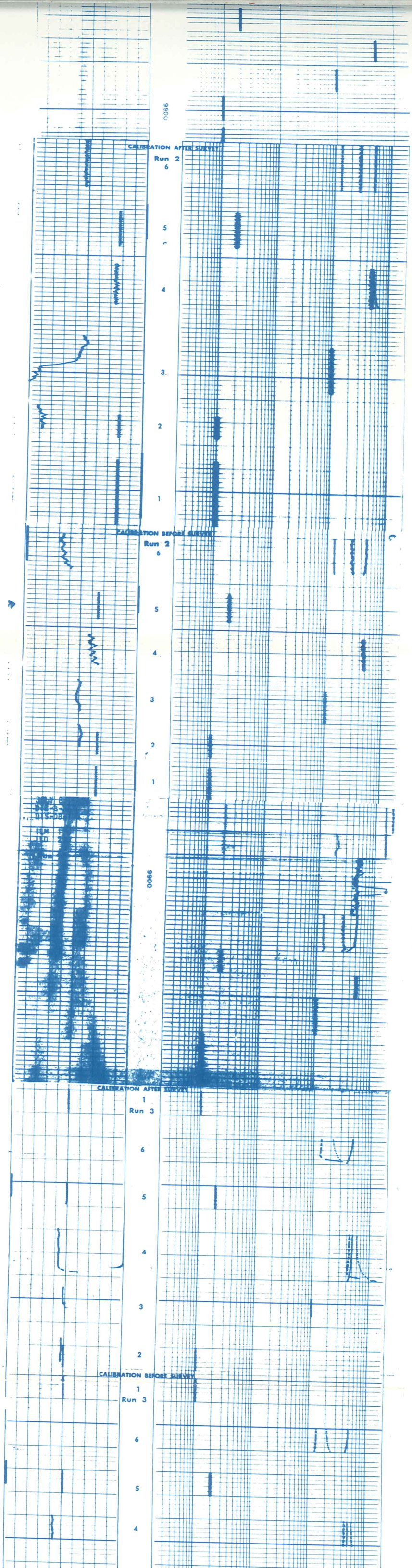
(Rxo/RT) Ω	RESISTIVITY OHMS M ² M			
SPONTANEOUS-POTENTIAL	LATEROLOG - 8			
- 10 MV +	0.2	1.0	10	100 1000 2000
MILLIVOLTS	MEDIUM INDUCTION			
	0.2	1.0	10	100 1000 2000
	DEEP INDUCTION			
	0.2	1.0	10	100 1000 2000

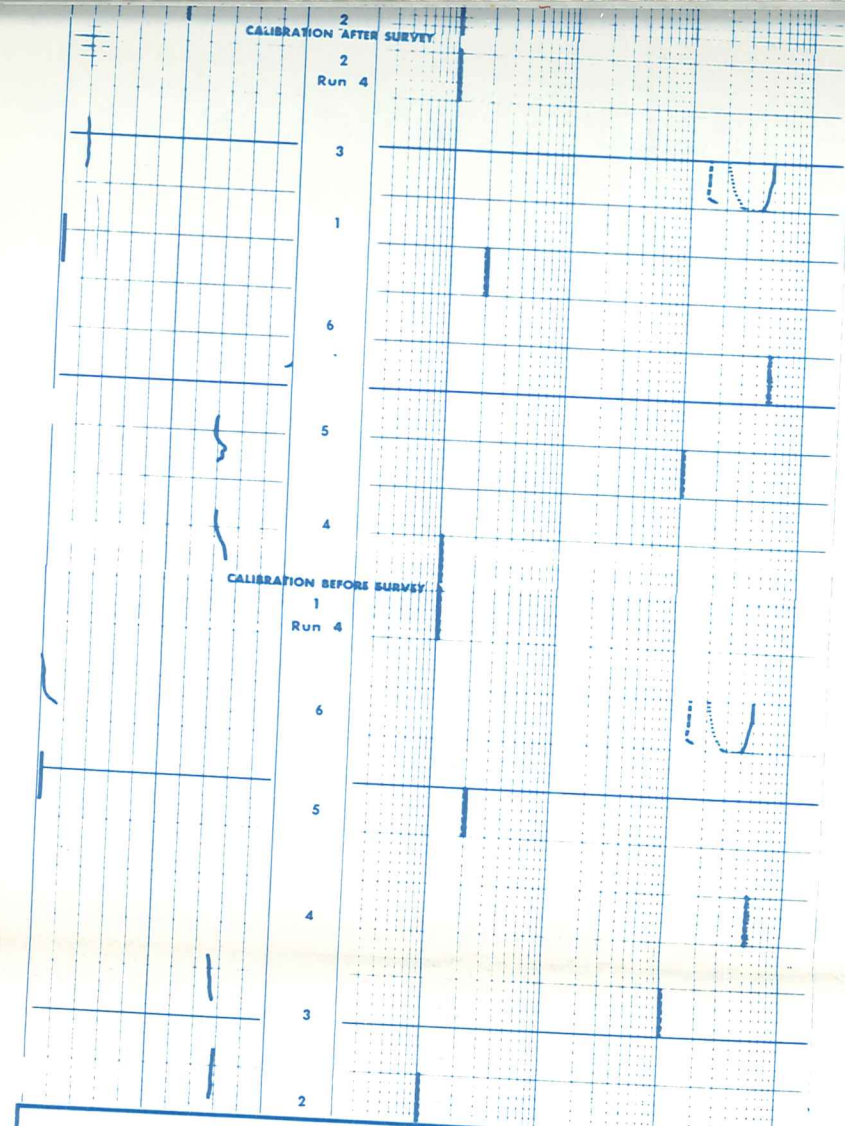
CALIBRATION RECORD



DIC-B-176
DIS-DB-119
JULY 7, 1976
Run 1

9800





DIL/SONIC CALIBRATION CODING

DIL		SONIC	
1.	MECHANICAL ZERO		MECHANICAL ZERO
2.	1 ohm-m		60 - sec
3.	100 ohm-m		80 - sec
4.	500 ohm-m		100 - sec
5.	2 ohm-m		140 - sec
6.	SONDE ERROR		
7.	ZERO SIGNAL IN AIR		
8.	TEST LOOP		

SURFACE CALIBRATION ONLY

CALIBRATION RECORD

COMPANY	MICHEL T. HALBOUTY ET AL	SCHL. FR	14009
WELL	J. N. JAMES #1	SCHL. TD	14015
FIELD	WILDCAT	DRLR. TD	14000
COUNTY	ADA	STATE	IDAHO
		Elev. KB	2571
		DF	---
		GL	2551

L.S. Analysis

Schlumberger

DEPTH	MICHEL T. HALBOUTY ET AL WILDCAT		ADA		J. N. JAMES #1 IDAHO		REMARKS	
	R _T	R _W	Ø _N	Ø _D	Ø _D	Ø _D		
4390-4408	13	.6			25	23	24	90
4528-4566	25	.6			25	23	24	65
5040-5070	30	.6			23	24	24	59
5900-5934	47	.6			22	22	22	51
6076-6170	60	.6			20	20	20	55
6270-6334	70	.6			20	20	20	50
6770-6796	40	.5			13	15	14	46
7744-7800	80	.5			14	15	15	87
								58
								53
4124-4136	50	1.5	2.5		40	26	29	60
								77
7390-7400	40	.6	.5		12	14	13	94
								86
8010-8020	50	.4	.5		12	14	13	69
								77

R_W ESTIMATED FROM WET SANDS