

Schlumberger

SIMULTANEOUS COMPENSATED NEUTRON-FORMATION DENSITY

COMPANY E G G
WELL INEL # 1
FIELD WILDCAT
COUNTY BUTTE STATE IDAHO
Permanent Datum: GL Elev 4874.86
Log Measured From: GL 0 Ft. Above Perm. Datum
Drilling Measured From: GL
Date: 3/3/79 3/27/79 5/19/79
Run No: ONE TWO THREE
Depth-Driller: 1524 3555(STRAP) 10333
Depth-Logger: 1557 3554 10121
Btm Log Interval: 1554 3552 10113
Top Log Interval: 340 1488 3550
Casing-Driller: 30 @ 40' 20 @ 1511 133 @ 3550
Casing-Logger: 26 @ 1511 17 @ 3550
Bit Size: 26 17.50 12.25
Type Fluid in Hole: FGM LSND FRESH WATER
Dens. Visc: 8.5 50 8.8 57
pH Fluid Loss: 8.0 13
Source of Sample: MUDTANK MUD TANK MUD TANK
Rm @ Meas. Temp: 6.07 @ 45 F 8.52 @ 70 F
Rmf @ Meas. Temp: 5.77 @ 75 F 8.94 @ 59 F
Rmc @ Meas. Temp: 3.11 @ 45 F 12.86 @ 70 F
Source Rmf Rmc: M C M C
Rm @ BHT: 4.34 @ 63 F 5.22 @ 116 F 1.75 @ 260 F
Circulation Stopped: 4/4 @ 0300 3/27 @ 0130 5/18 @ 0200
Logger on Bottom: 4/4 @ 1100 3/27 @ 1630 0130
Max Rec. Temp: 63 F 116 F 260 F
Equip. Location: 8073 EVSTN 8060 EVSTN 8056 EVSTN
Recorded By: RAJVO ROONEY RADLEY
Witnessed By: T E NEWMAN STRAWN/NELSON S RAWN

Reproduced By
Electrical Log Services
MIDLAND, TEXAS 79701

REFERENCE K 3672H



COMPLETION RECORD

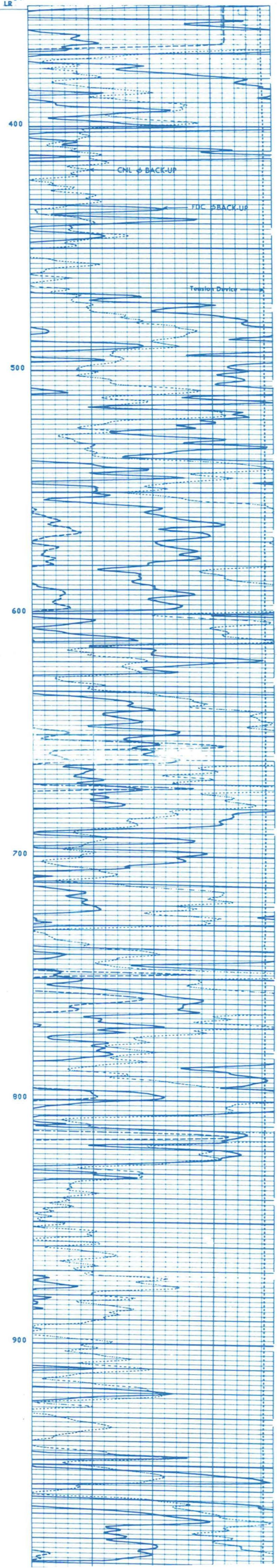
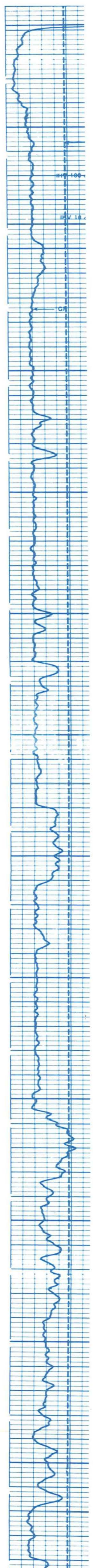
SPUD DATE
COMP DATE
DST RECORD
API NO. 11-023-60001
CASING RECORD
PERFORATING RECORD
ACID. FRAC SHOT
I P
GOR GR
T P C P
REMARKS:

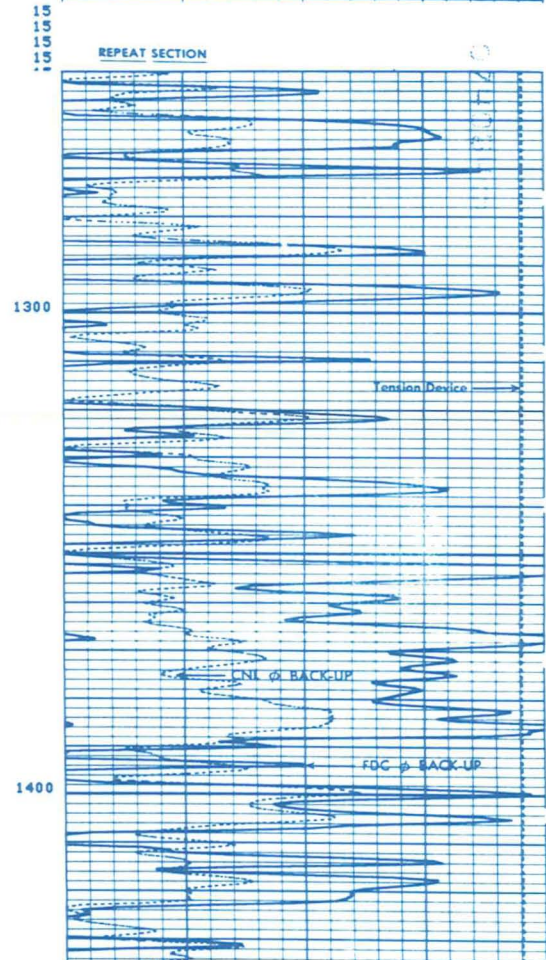
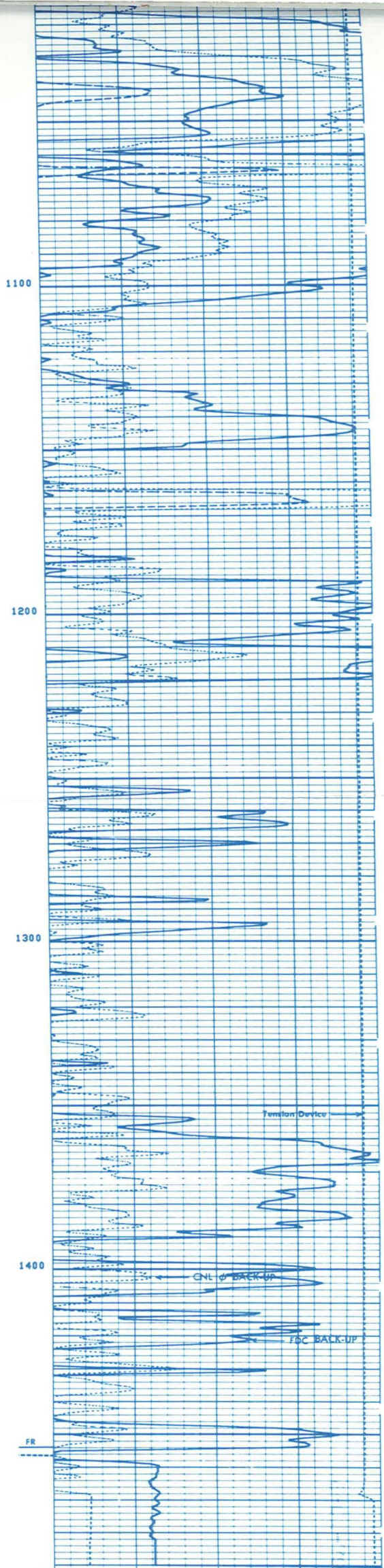
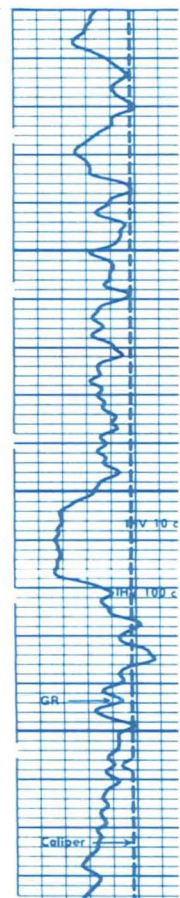
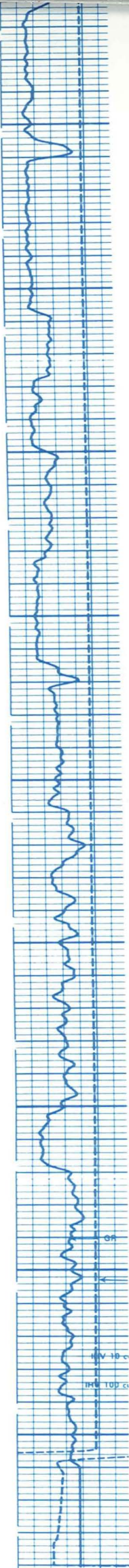
REPRODUCTION FOR RESALE PROHIBITED

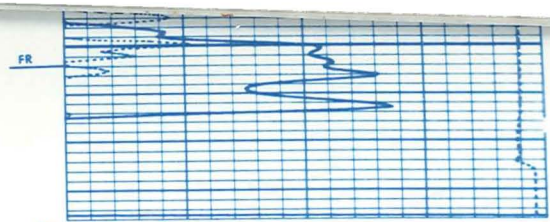
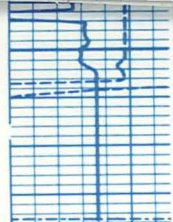
Table with columns: RUN NO., Service Order No., Fluid Level, Salinity, Speed, EQUIPMENT DATA, CALIBRATION DATA, LOGGING DATA. Includes detailed equipment and calibration specifications.

Table with columns: CALI (IN), GR (GAPI), TENS (LB), NPHIC, DPHIC. Contains numerical values for calibration and density measurements.

14  
14  
14  
14  
14  
14  
LR







14  
14  
14  
14  
14  
14

CALI(JM)	
20.00	30.00
GR (GAPI)	
0.0	150.0

TENS(LB)		0.0
NPHI( )		0.3000
DPHI( )		-0.100
NPHI( )		-0.100
DPHI BACK-UP		.30

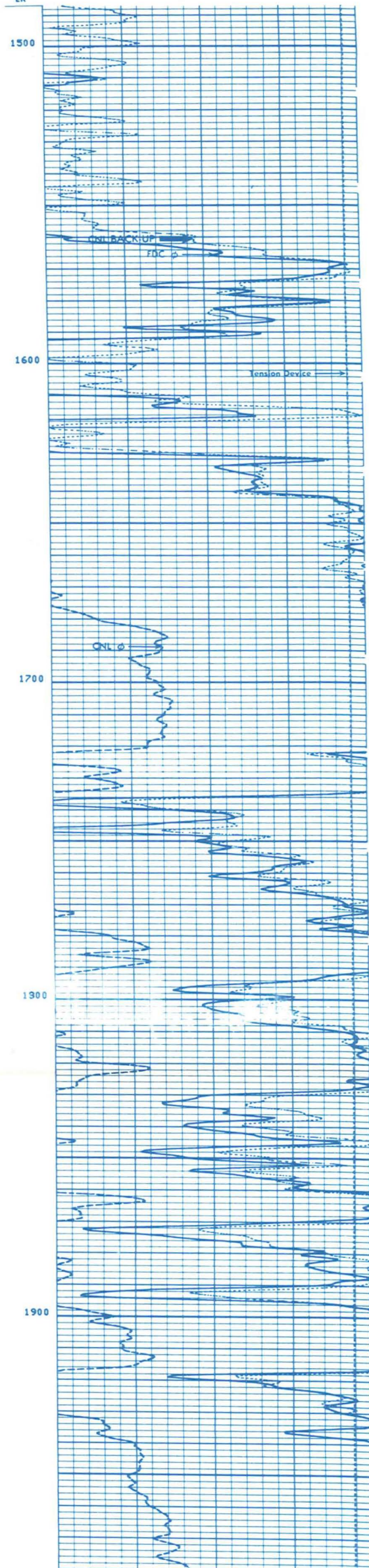
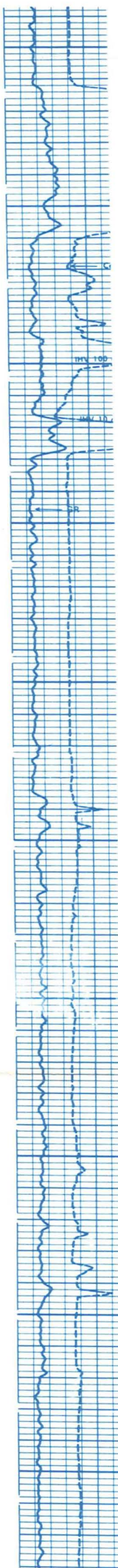
Run 1  
14  
14  
14  
14  
14

Caliper  
SCALE CHANGE

CALI(JM)	
15.00	25.00
GR (GAPI)	
0.0	150.0

TENS(LB)		0.0
NPHI( )		0.3000
DPHI( )		-0.100
NPHI( )		-0.100
DPHI BACK-UP		.30

Run 2  
10  
10  
10  
10  
10  
10



1500

1600

1700

1900

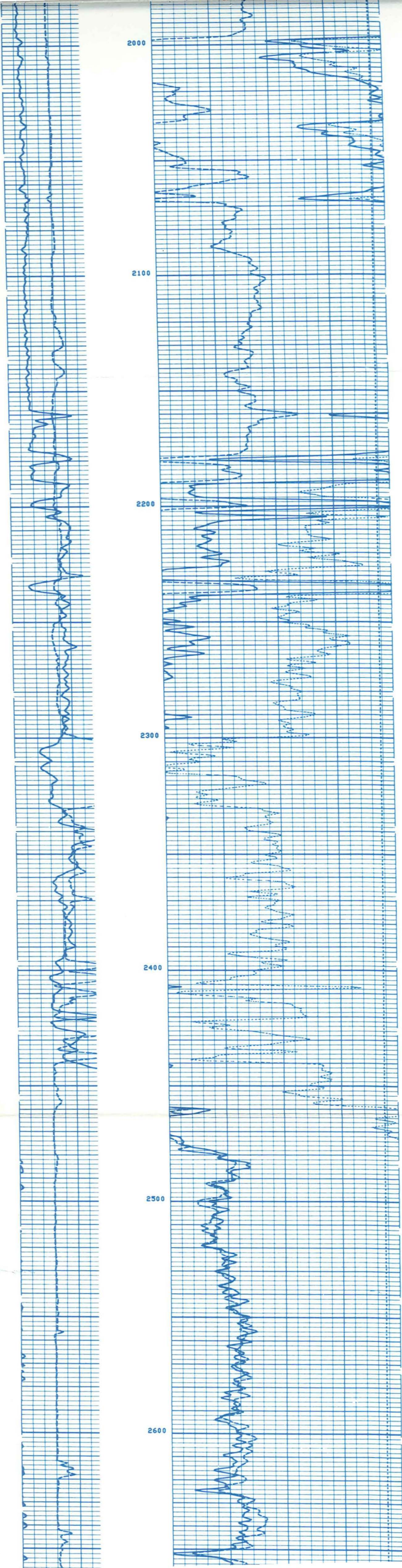
1900

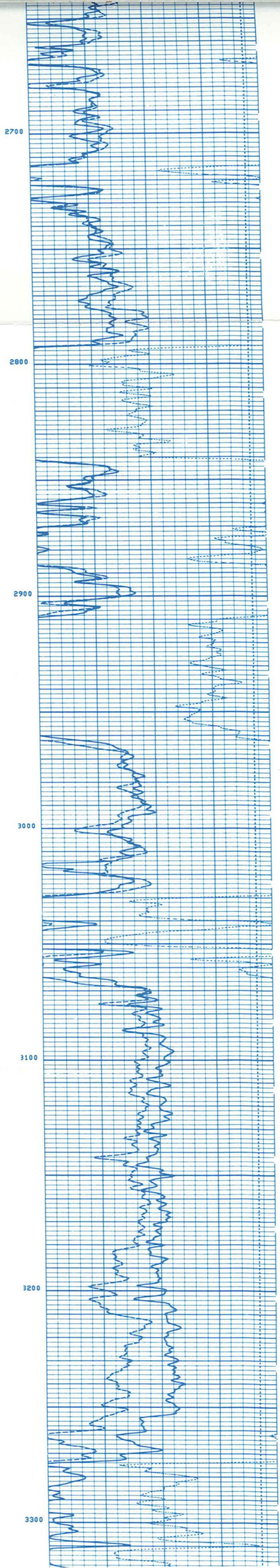
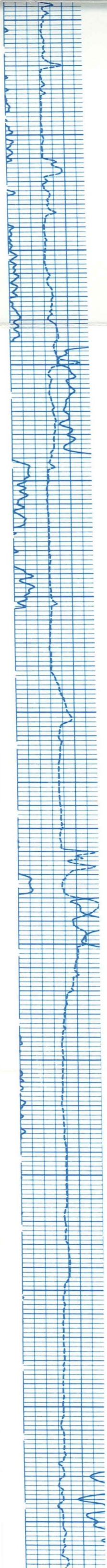
DPHI BACK-UP

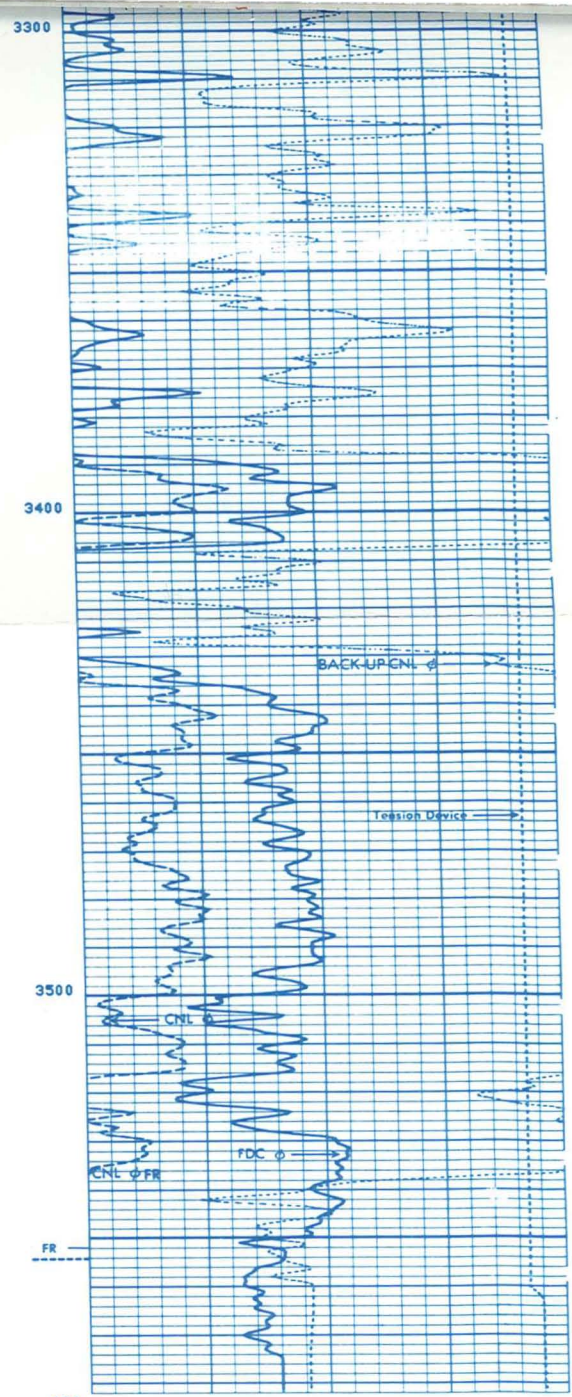
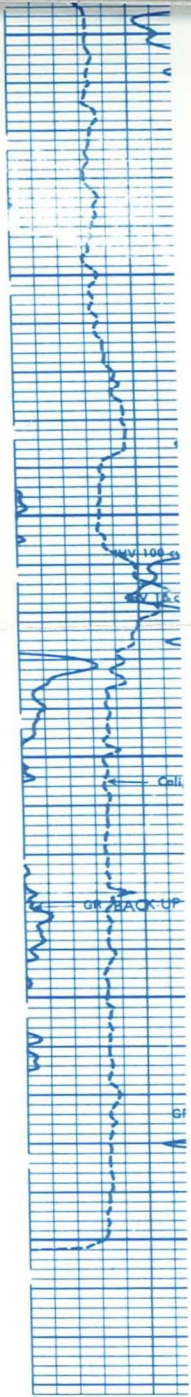
FDC 2

Tension Device

ONL 0

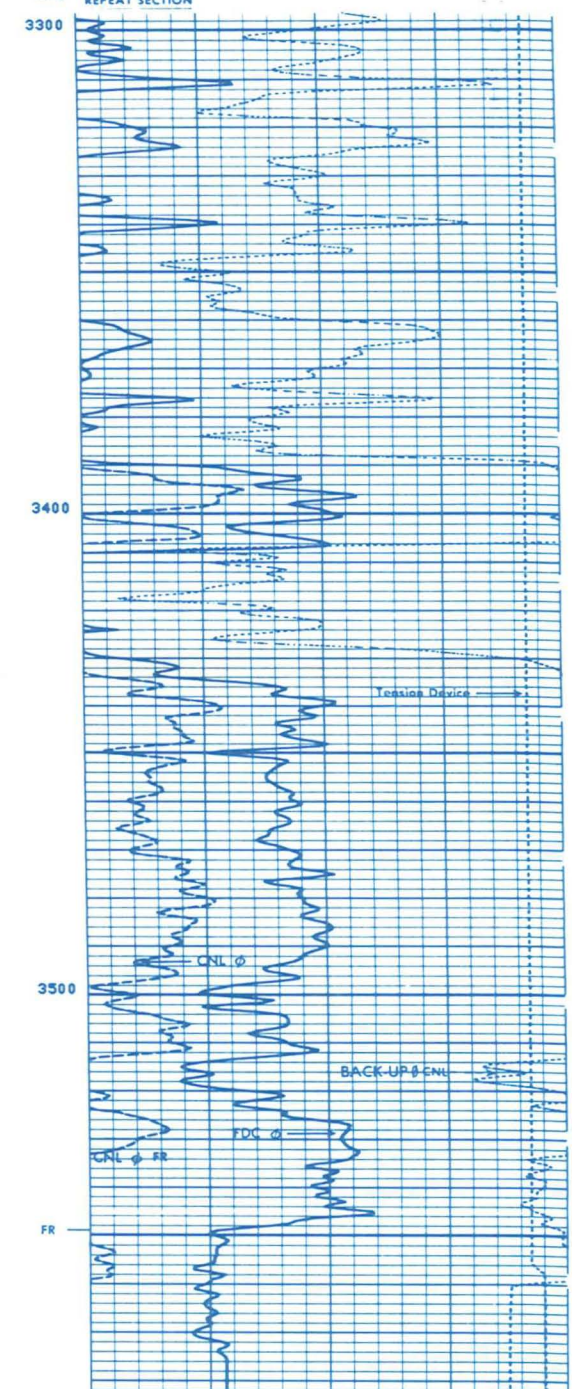
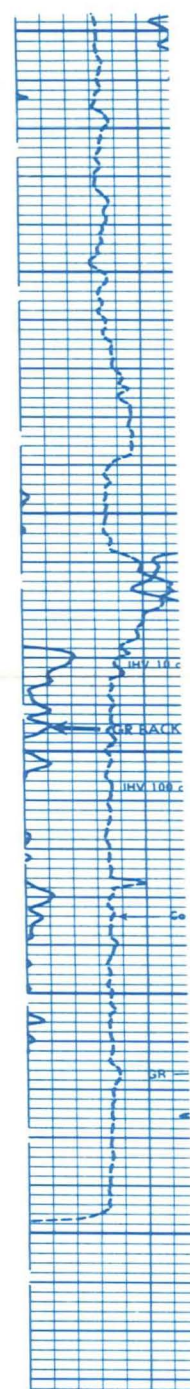






101  
101  
101  
101  
102  
102

REPEAT SECTION



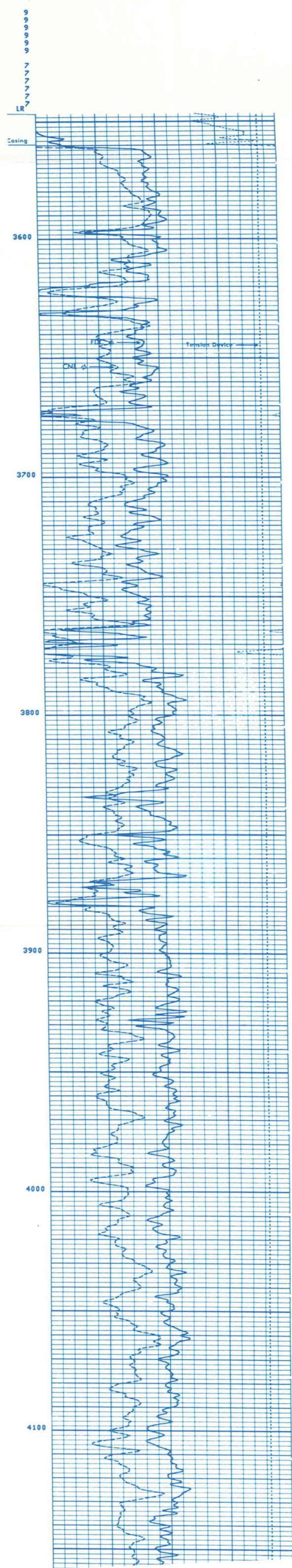
102  
102  
102  
102

15.00	CALI (IN)	25.00
0.0	GR (GAPI)	150.0

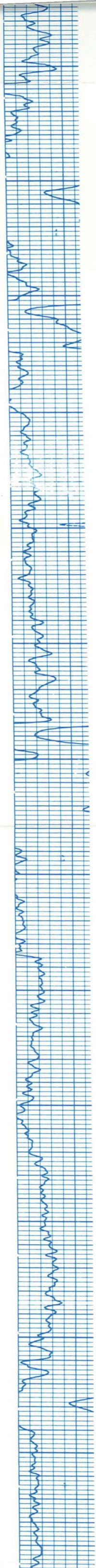
10000.	TENS (LR)	0.0
0.7000	NPHI ( )	0.3000
0.3000	DPHI ( )	-0.100
0.3000	NPHI ( )	-0.100

Caliper  
SCALE CHANGE

TENS (LR)







4200

4300

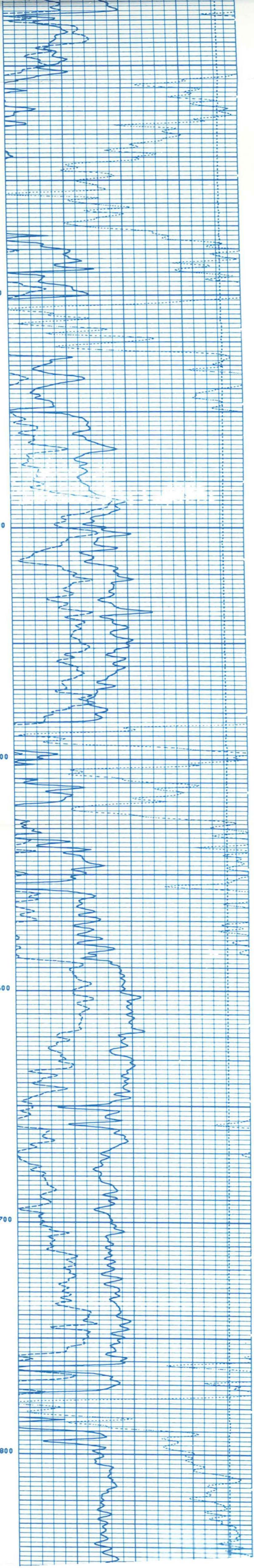
4400

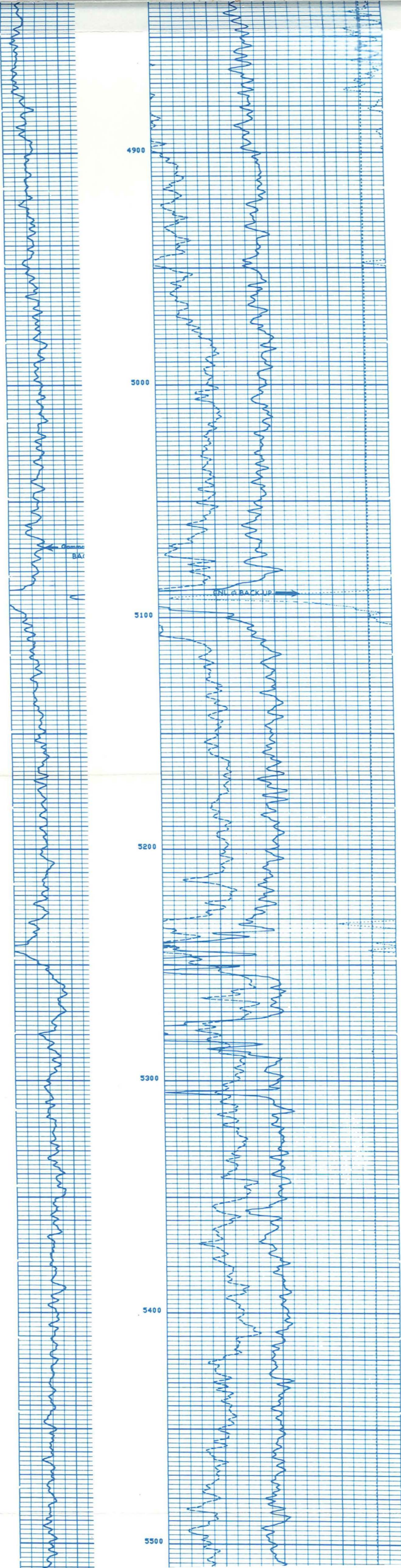
4500

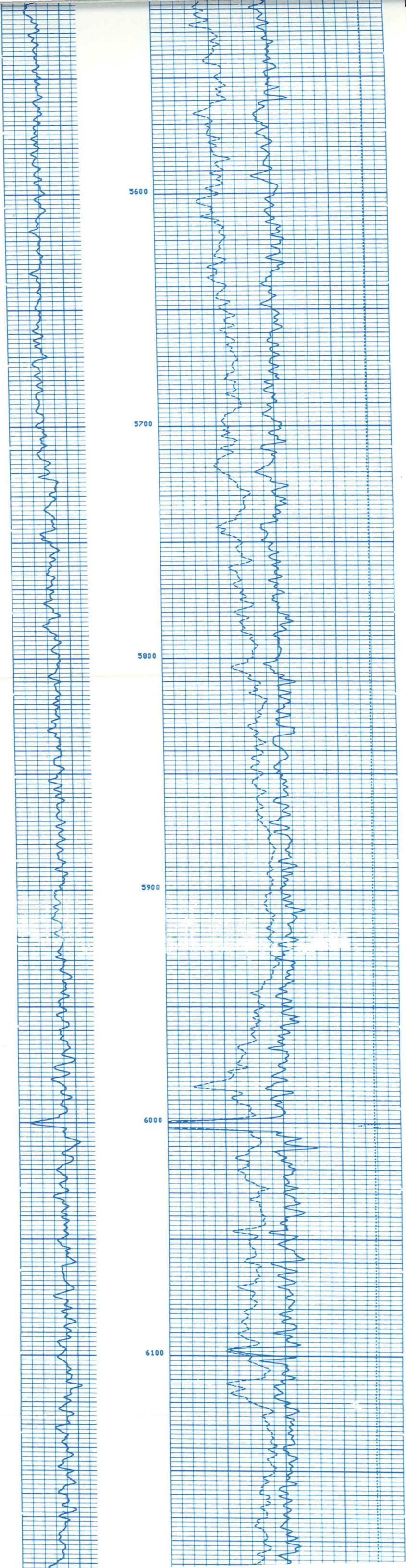
4600

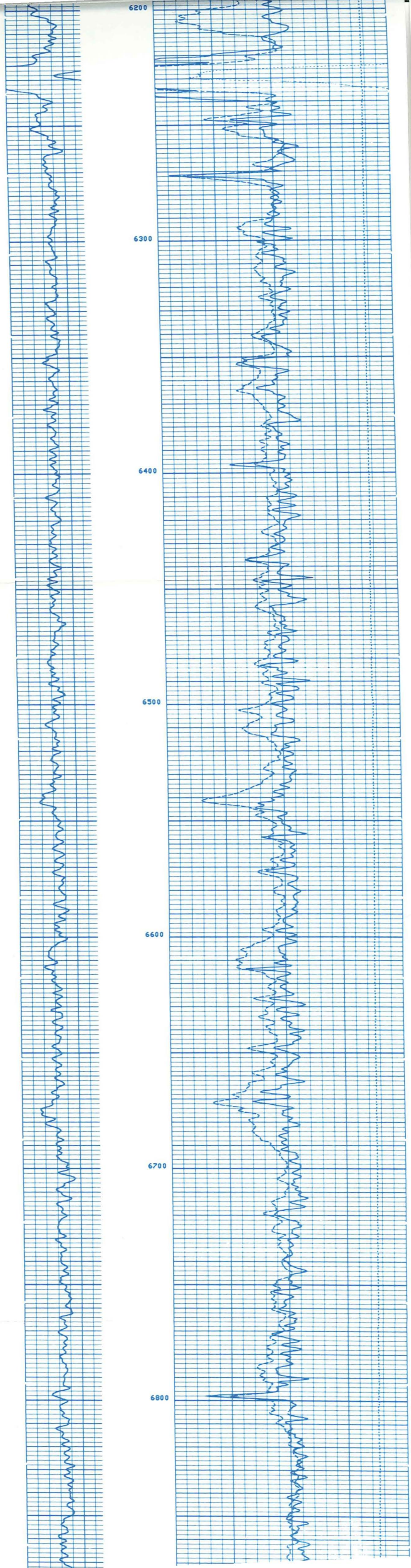
4700

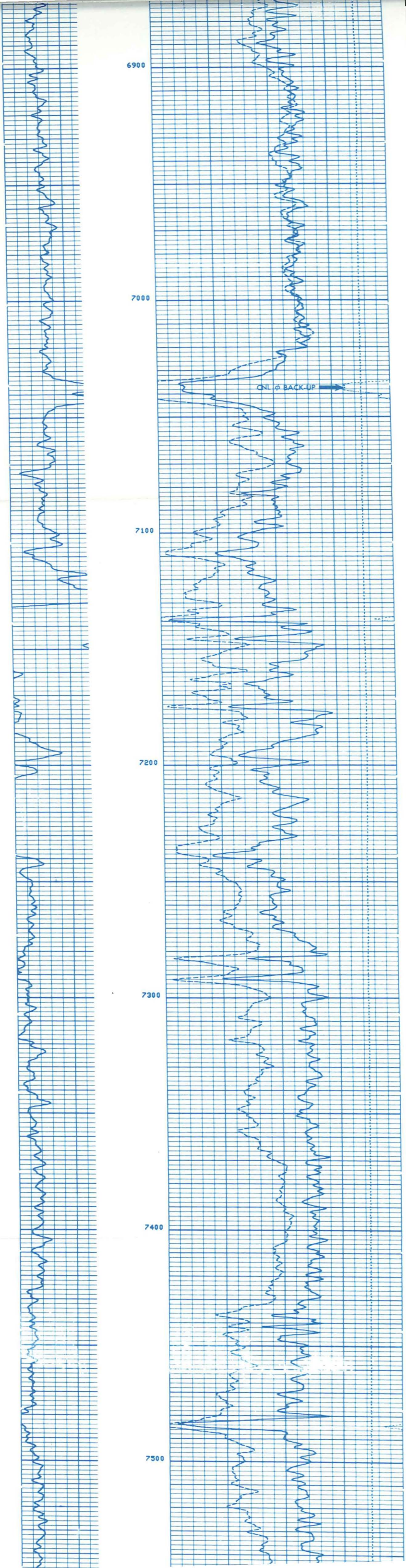
4800

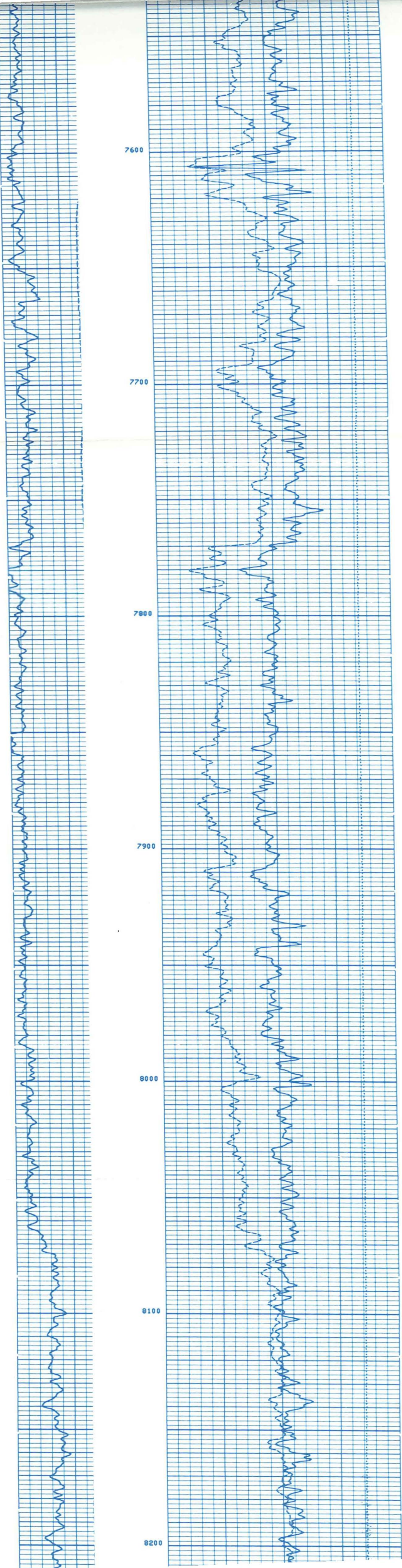


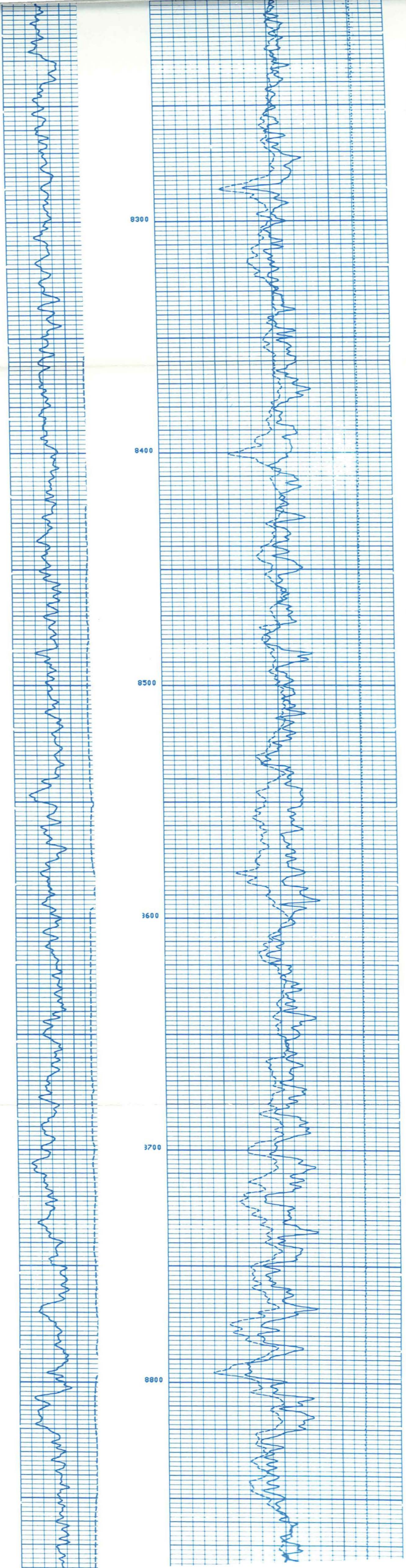


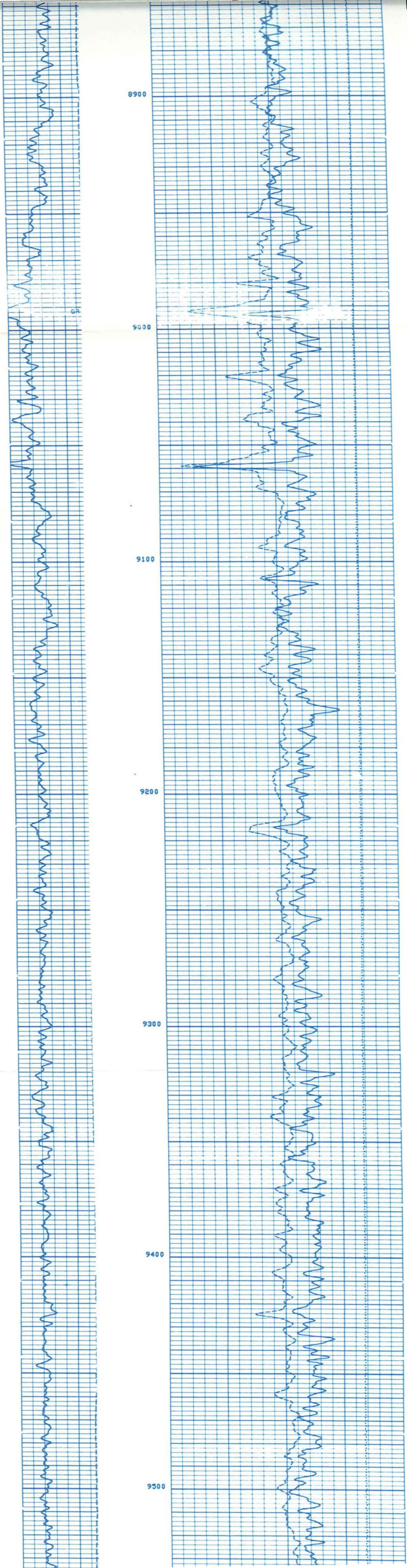




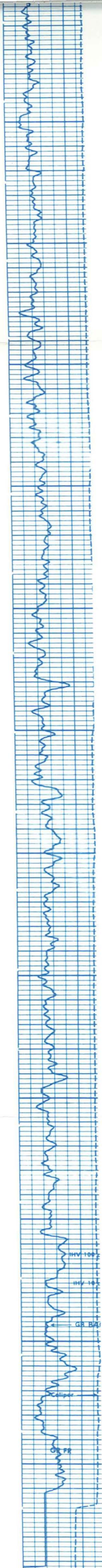












9600

9700

9800

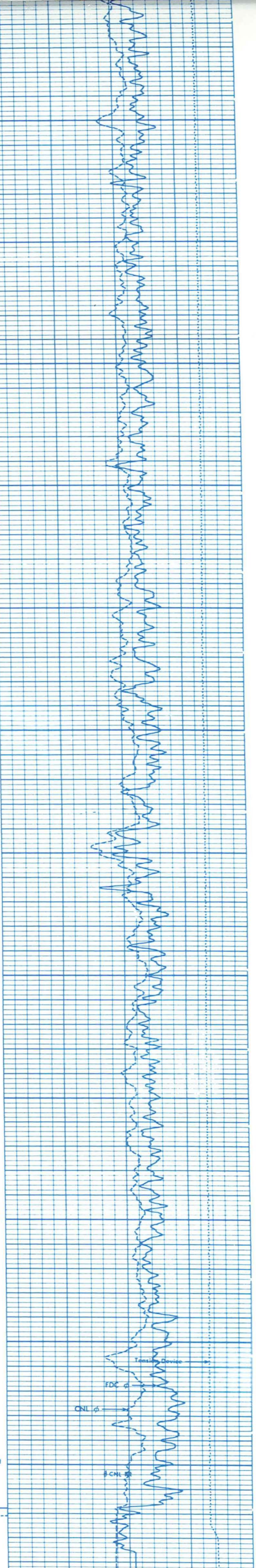
9900

10000

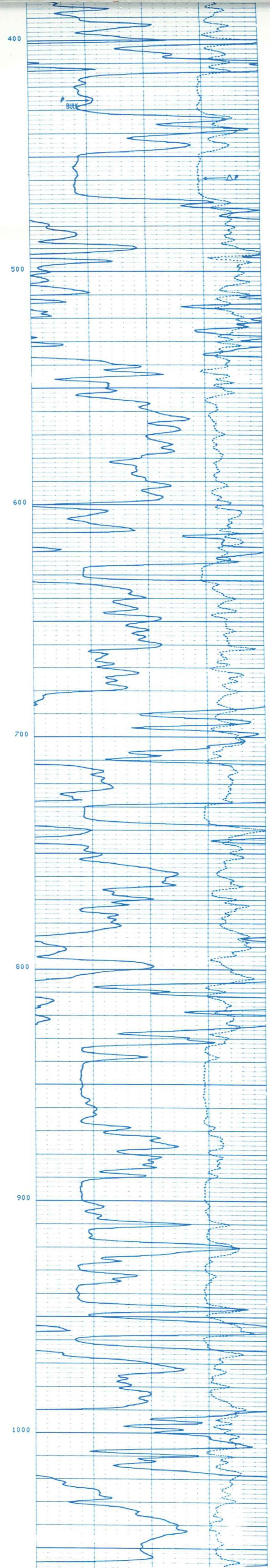
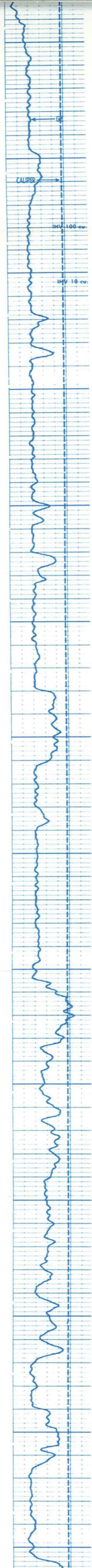
0100

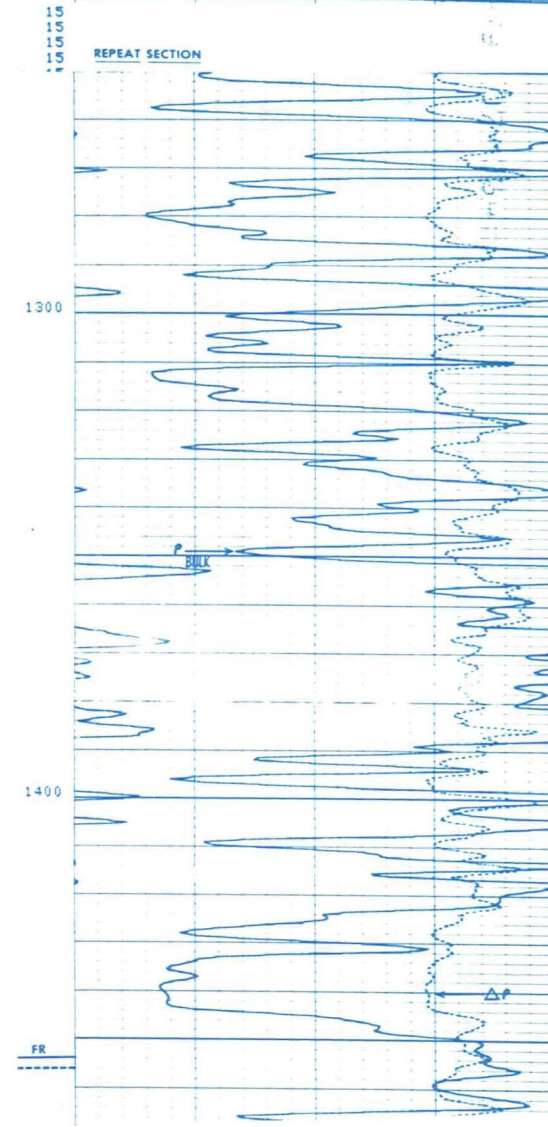
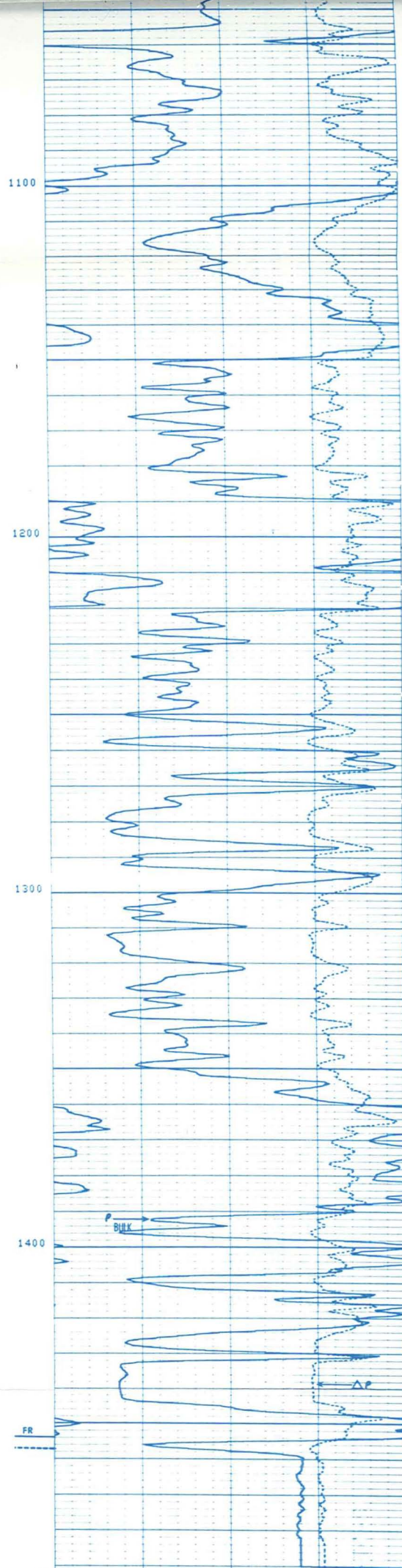
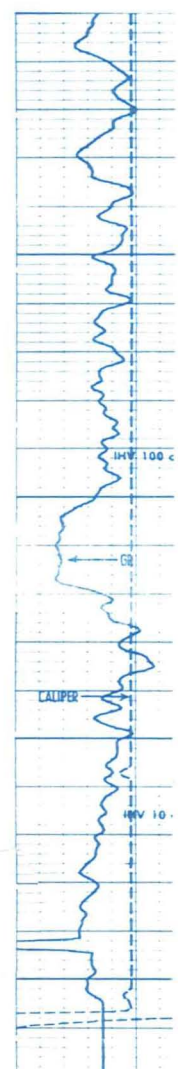
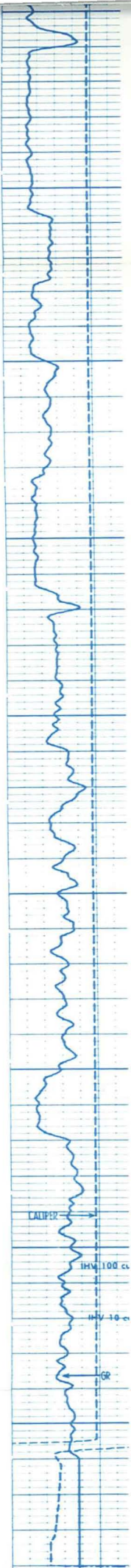
FR

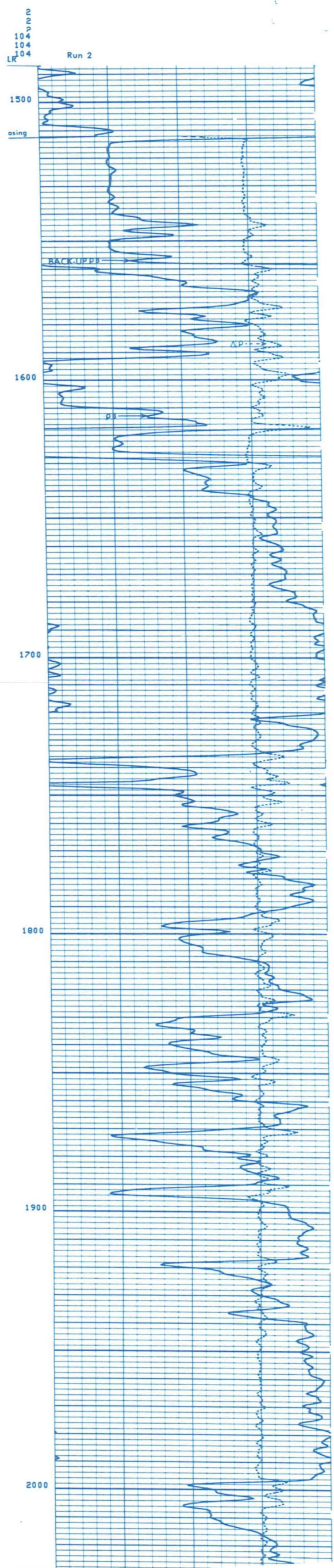
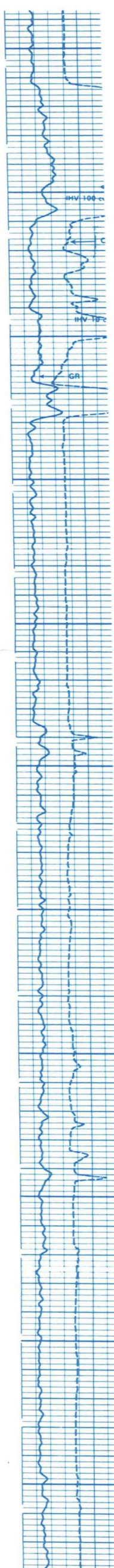
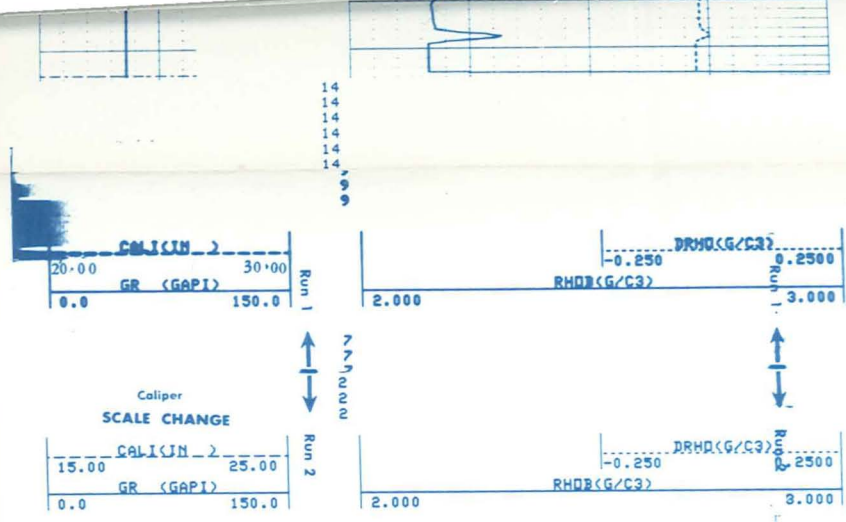
7  
7  
7  
7  
7  
6  
6  
6

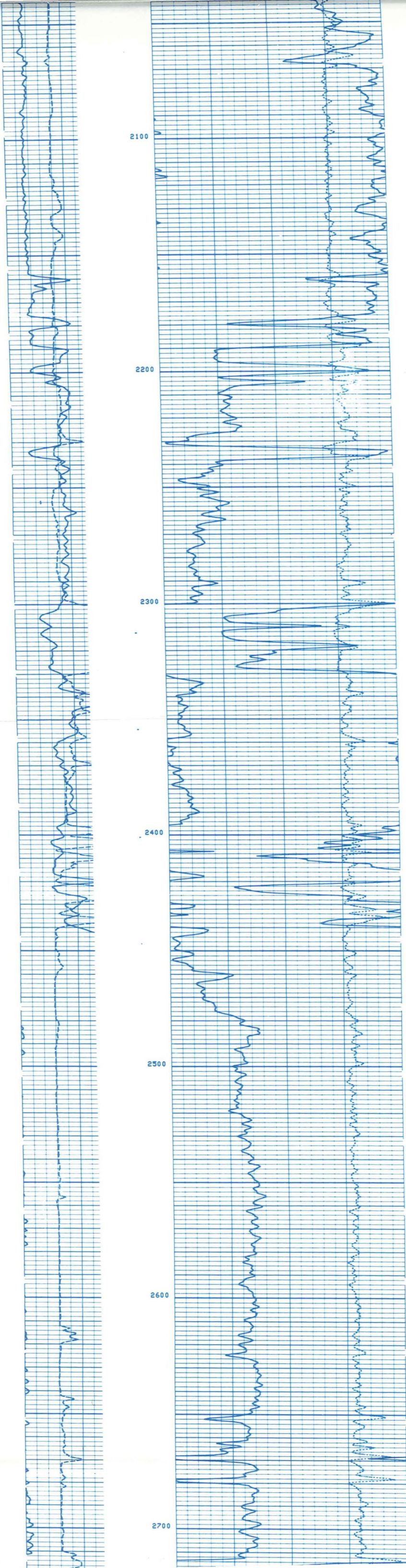


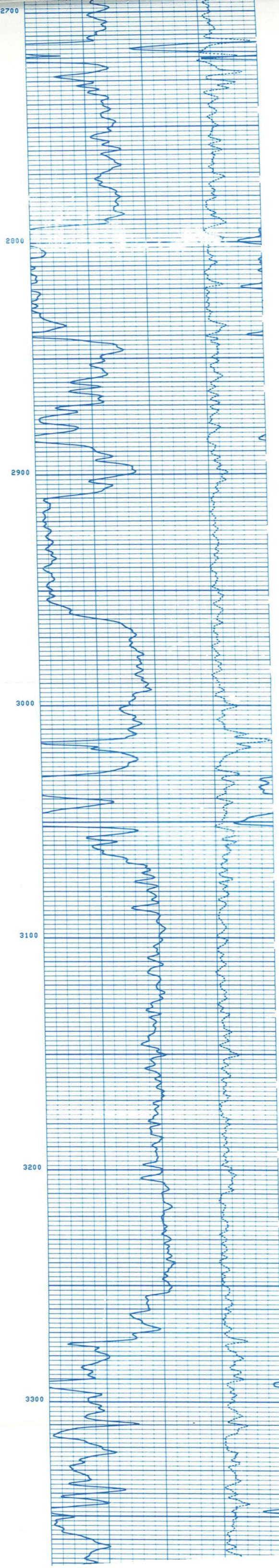
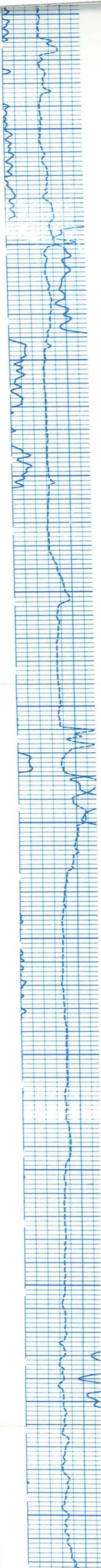


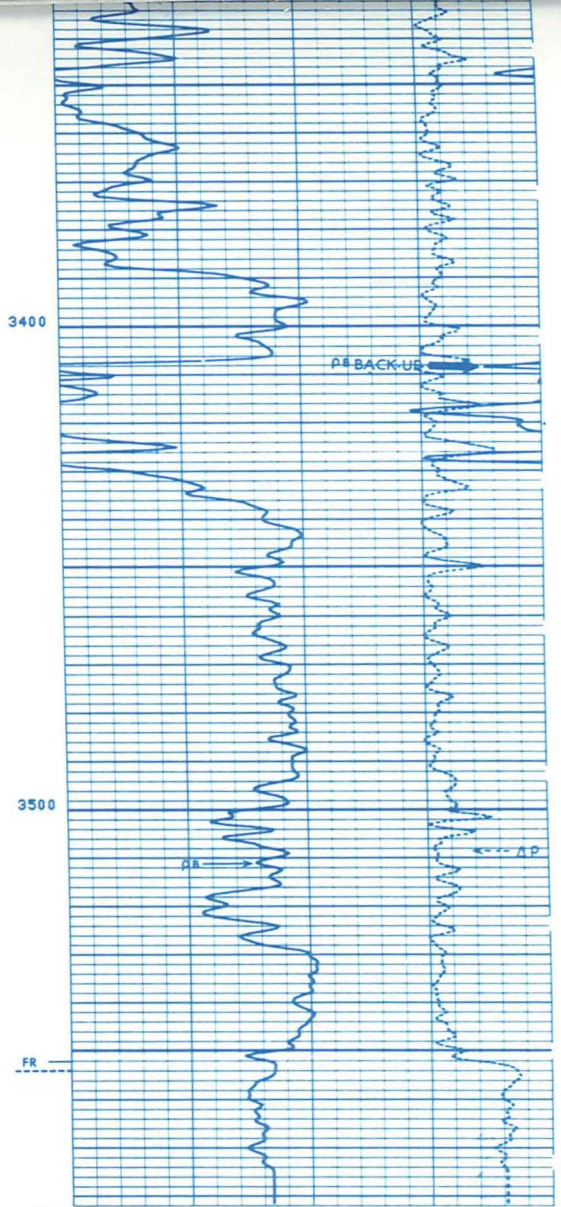
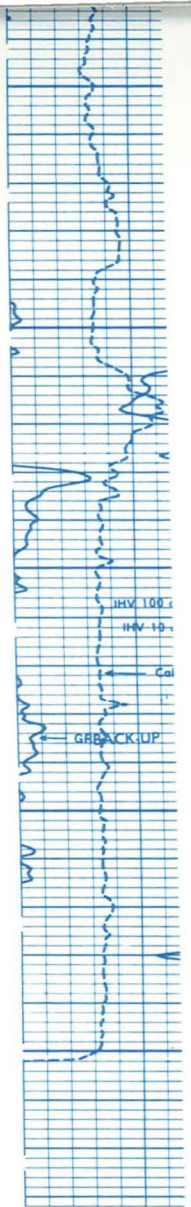






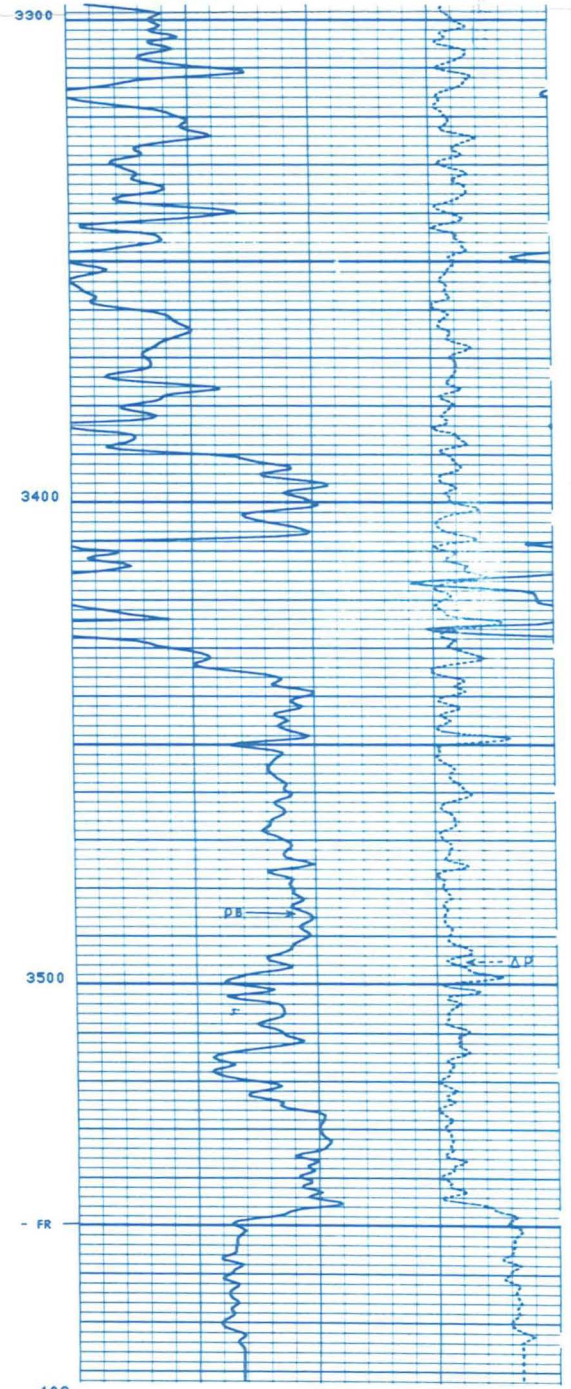
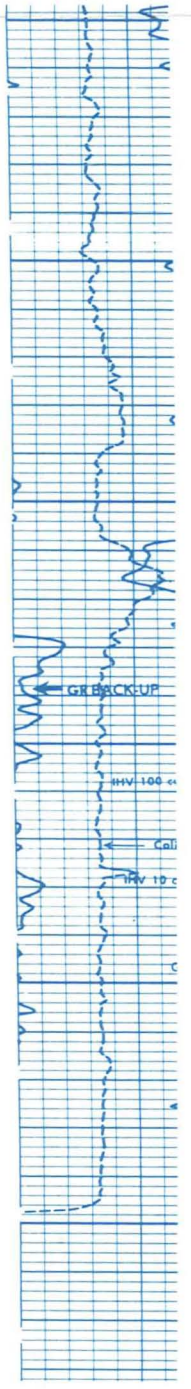




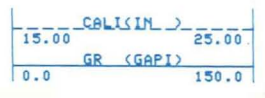


104  
104  
104  
104  
104  
104  
  
103  
103  
103  
103  
103  
103

REPEAT SECTION



103  
103



Coliper  
SCALE CHANGE



Run 2

Run 2

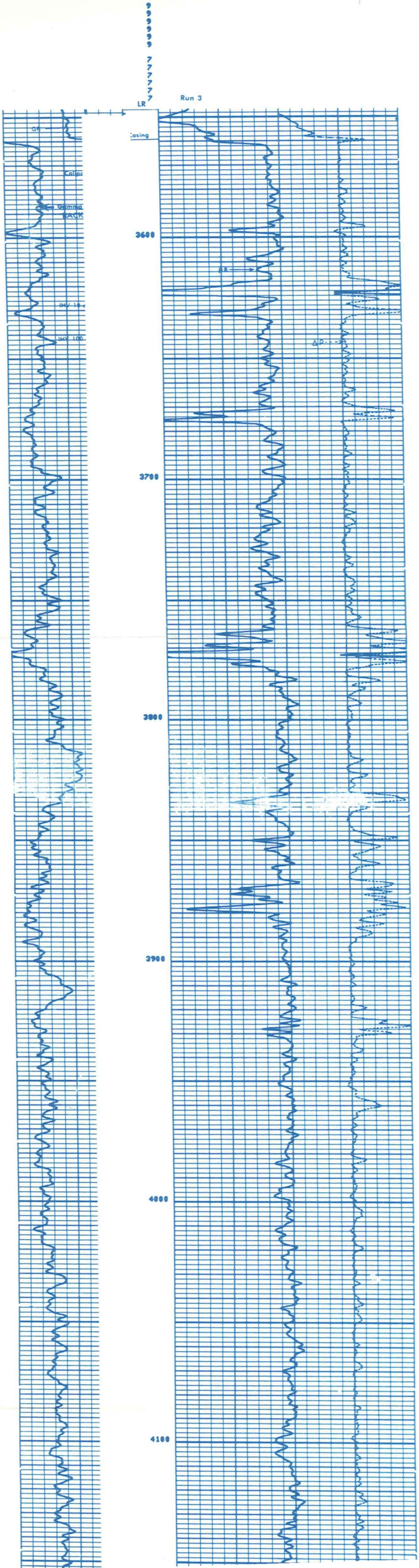
Run 3

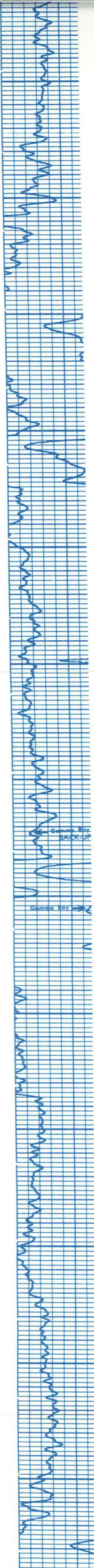
Run 3



Run 3  
CALI (IN) 6.000 16.00  
GR (GAPI) 0.0 150.0

Run 3  
RHO (G/CC) 2.000 3.000  
RHO (G/CC) 0.250 0.2500





4200

4300

4400

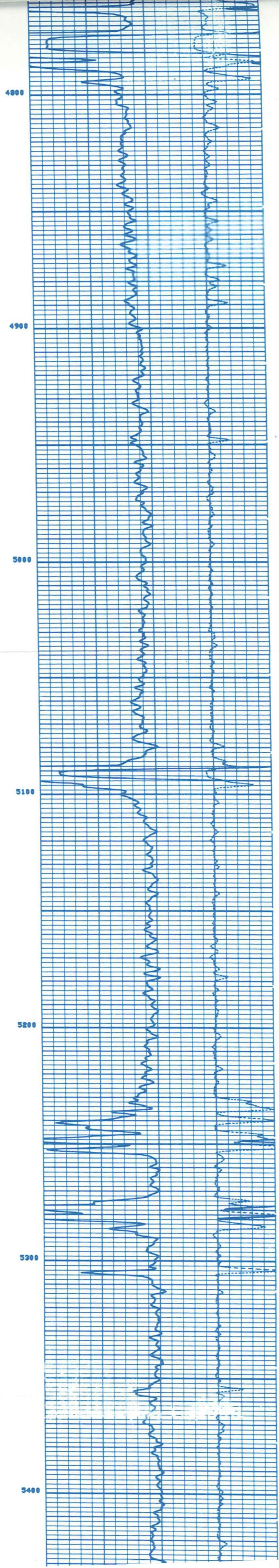
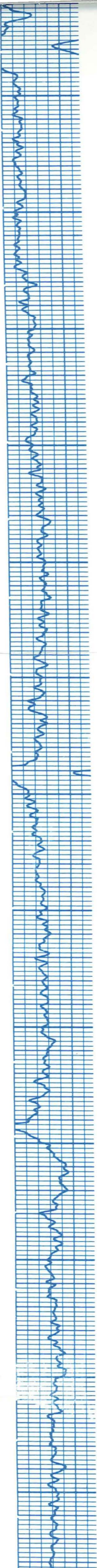
4500

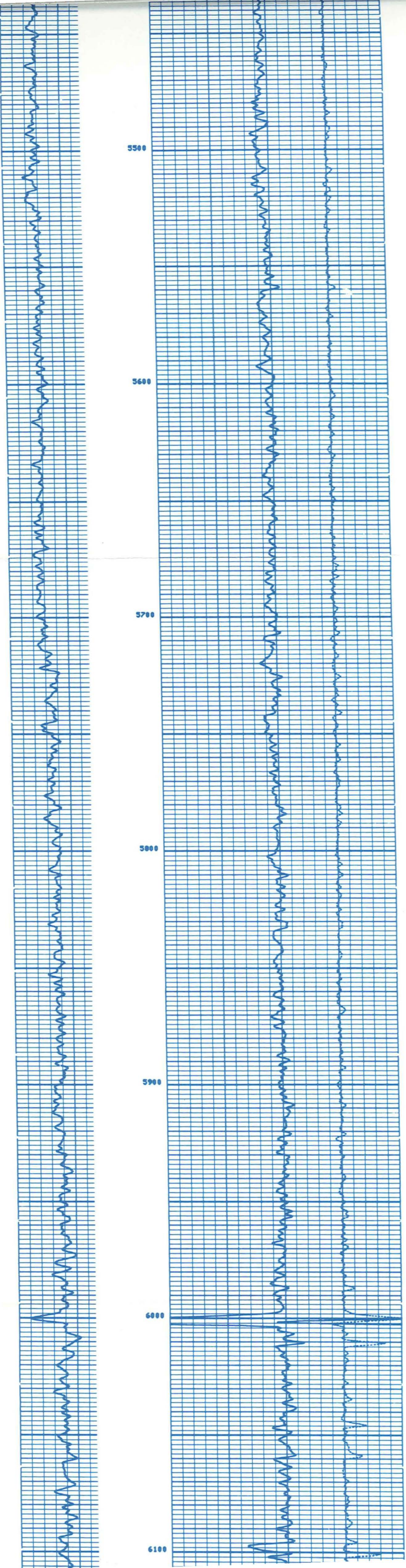
4600

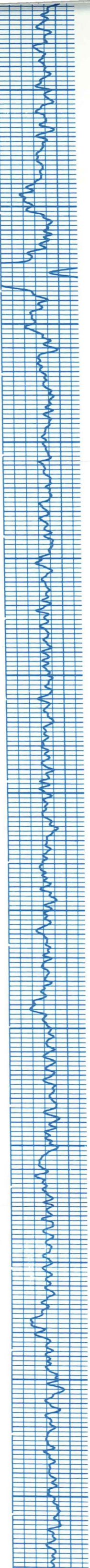
4700

Gamma Ray  
BACK-UP

Gamma Ray







6200

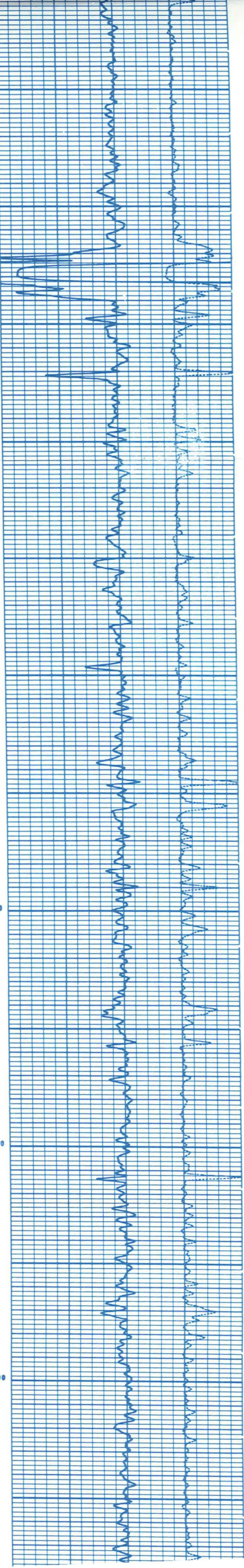
6300

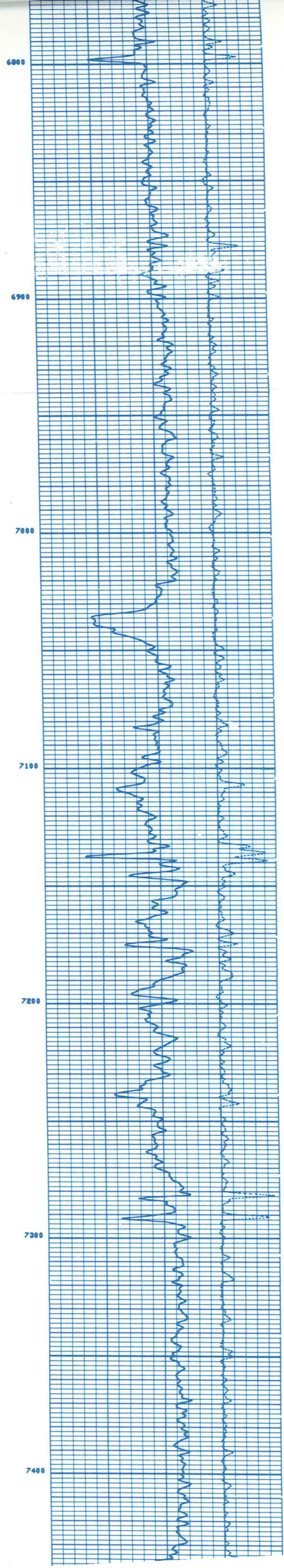
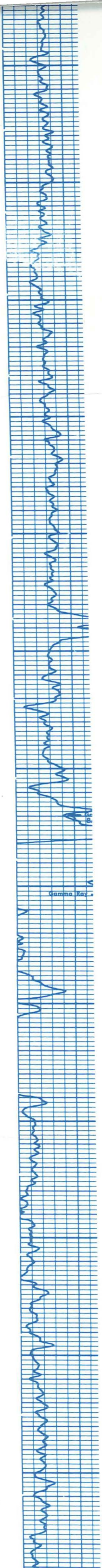
6400

6500

6600

6700





6800

6900

7000

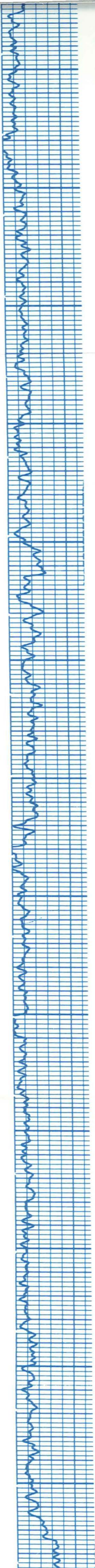
7100

7200

7300

7400

Gamma Ray



7500

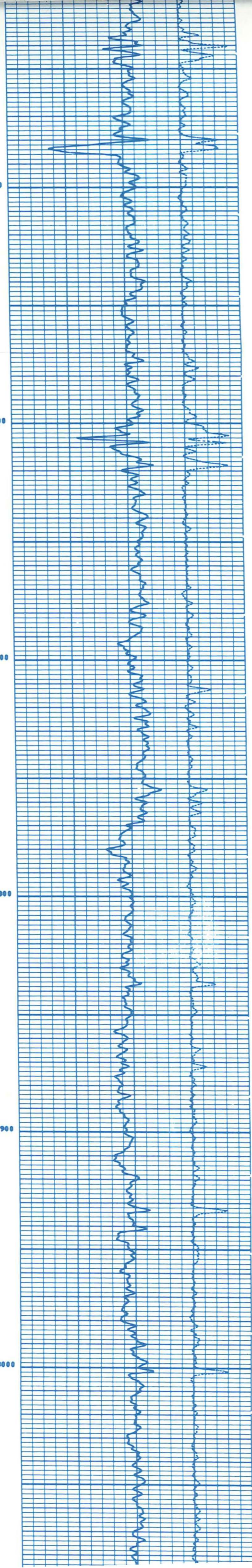
7600

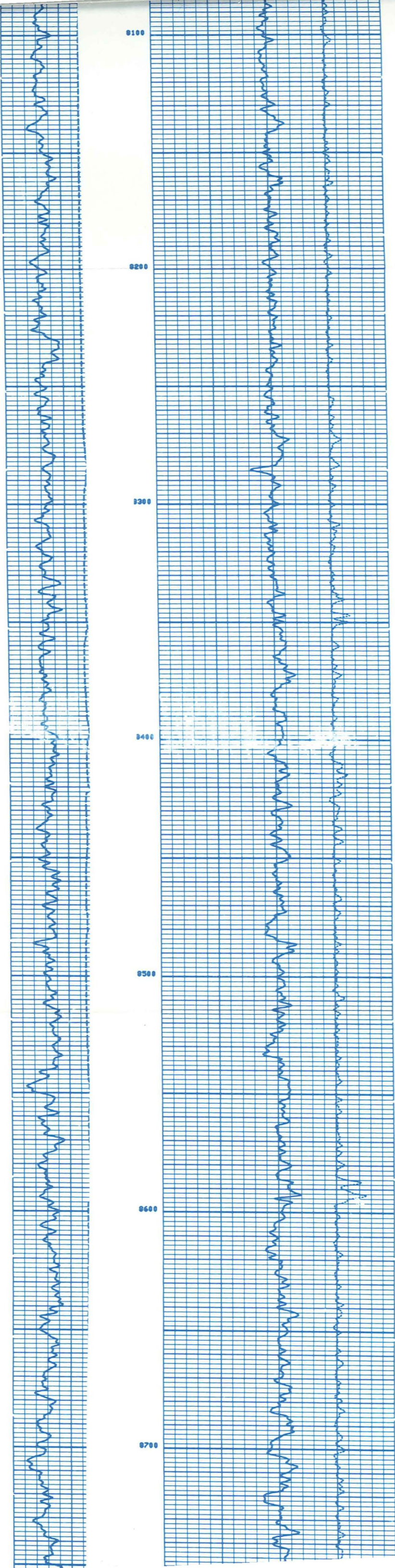
7700

7800

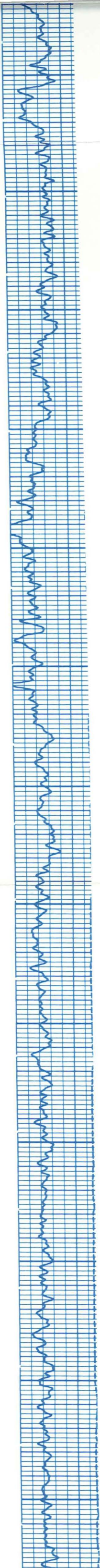
7900

8000









8800

8900

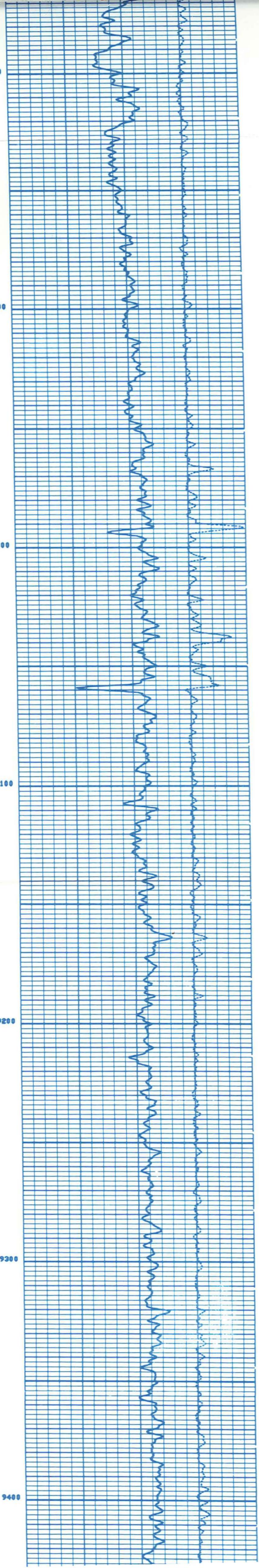
9000

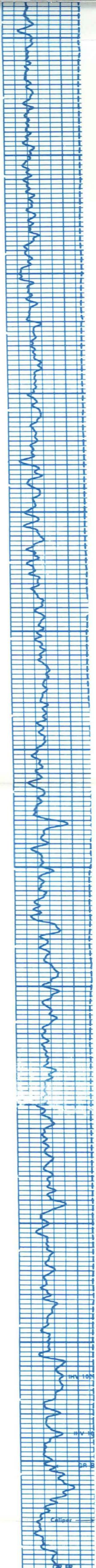
9100

9200

9300

9400





9500

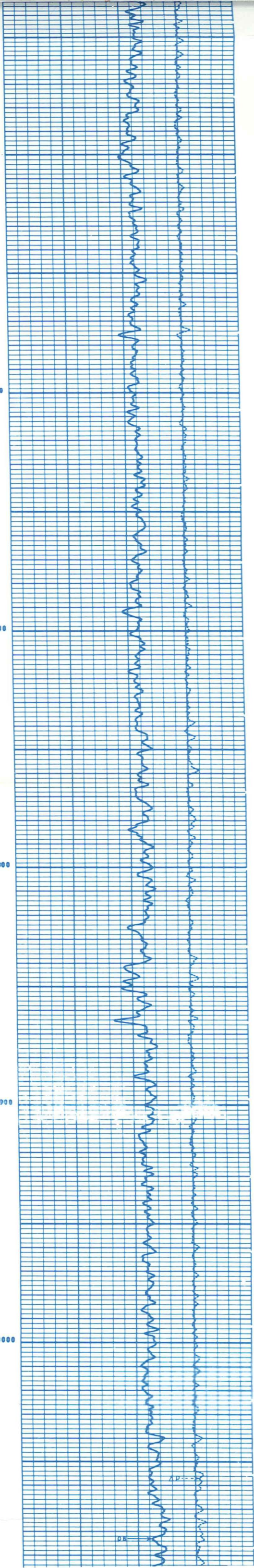
9600

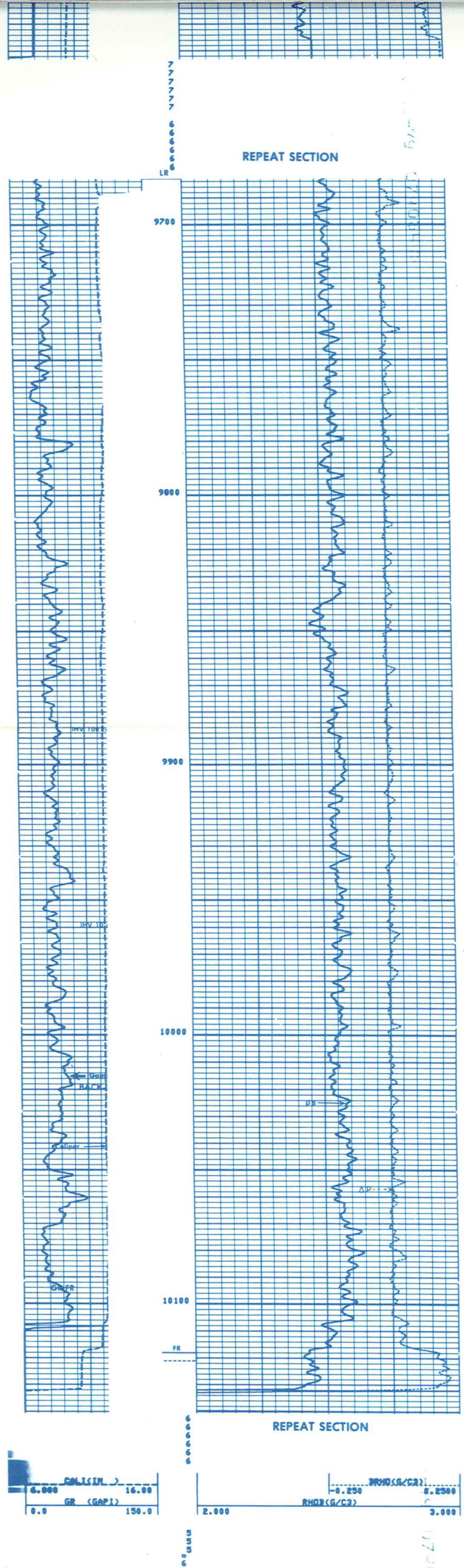
9700

9800

9900

10000





Run 1 BEFORE SURVEY CALIBRATION SUMMARY

PERFORMED: 79/03/03  
 PROGRAM FILE: NUC (VERSION 12.4A 78/12/8)

SGTE DETECTOR CALIBRATION SUMMARY				
	MEASURED	JIG	CALIBRATED	UNITS
GR	34	197	164	GAPI

CNTA DETECTOR CALIBRATION SUMMARY				
	TANK	MEASURED	JIG	CALIBRATED
MRAT	0.0	2.28	2.15	

PGTK DETECTOR CALIBRATION SUMMARY				
BLOCK		JIG		

Run 1 SHDP SUMMARY

PERFORMED: 79/03/01  
PROGRAM FILE: SHDP (VERSION 12.4 78/12/ 8)

CNTA DETECTOR CALIBRATION SUMMARY

	TANK		JIG	
	MEASURED	CALIBRATED	MEASURED	CALIBRATED
NRAT	2.28	2.15	2.28	2.15

(CNC:1364 , CNB:1371 )

15871

14871

Run 1 SHDP SUMMARY

PERFORMED: 79/03/02  
PROGRAM FILE: SHDP (VERSION 12.4 78/12/ 8)

PGTK DETECTOR CALIBRATION SUMMARY

		BLOCK		JIG		UNITS
		MEASURED	CALIBRATED	MEASURED	CALIBRATED	
FFDC	396	336	396	337	CPS	
NFDC	694	527	693	527	CPS	

(PGS:82 , PGC:104 , SFT:25 )

16890

16890

16890

16890

16890

Run 2 BEFORE SURVEY CALIBRATION SUMMARY

PERFORMED: 79/03/27  
PROGRAM FILE: NUC (VERSION 12.4A 78/12/ 8)

SGTE DETECTOR CALIBRATION SUMMARY

GR	MEASURED		CALIBRATED	UNITS
	BKGD	JIG		
	47	195	164	GAPI

CNTA DETECTOR CALIBRATION SUMMARY

NRAT	TANK		JIG	
	CALIBRATED	MEASURED	CALIBRATED	MEASURED
	0.0	2.22	2.16	2.22

PGTE DETECTOR CALIBRATION SUMMARY

		BLOCK		JIG		UNITS
		CALIBRATED	MEASURED	CALIBRATED	MEASURED	
FFDC	0	0	329	336	CPS	
NFDC	0	0	584	527	CPS	

PGTE CALIPER CALIBRATION SUMMARY

CALI	MEASURED		CALIBRATED		UNITS
	SMALL	LARGE	SMALL	LARGE	
	7.3	10.0	8.0	11.9	IN

2  
2  
2

Run 2 AFTER SURVEY TOOL CHECK SUMMARY

PERFORMED: 79/03/27  
PROGRAM FILE: NUC (VERSION 12.4A 78/12/ 8)

CNTA TOOL CHECK

NRAT	JIG	
	BEFORE	AFTER
	2.16	2.15

PROSITY CHANGE (LINE): -0.000

PGTE TOOL CHECK

		JIG		UNITS
		BEFORE	AFTER	
FFDC	336	335	335	CPS
NFDC	527	530	530	CPS

7  
7

Run 2 SHDP SUMMARY

PERFORMED: 79/01/16  
PROGRAM FILE: SHDP (VERSION 10.82 78/ 6/88)

CNTA DETECTOR CALIBRATION SUMMARY

NRAT	TANK		JIG	
	MEASURED	CALIBRATED	MEASURED	CALIBRATED
	2.22	2.16	2.22	2.16

(CNC:1282 , CNB:1342 )

7  
7  
7  
7

Run 2 SHDP SUMMARY

PERFORMED: 79/01/89  
PROGRAM FILE: SHDP (VERSION 12.4 78/12/ 8)

PGTE DETECTOR CALIBRATION SUMMARY

		BLOCK		JIG		UNITS
		MEASURED	CALIBRATED	MEASURED	CALIBRATED	
FFDC	321	325	321	325	CPS	
NFDC	527	527	527	527	CPS	

(PGS:80 , PGC:65 , SFT:604 )

5  
5  
5  
5  
5

Run 3 BEFORE SURVEY CALIBRATION SUMMARY

PERFORMED: 79/05/18  
PROGRAM FILE: NUC (VERSION 12.4A 78/12/ 8)

SGTE DETECTOR CALIBRATION SUMMARY

GR	MEASURED		CALIBRATED	UNITS
	BKGD	JIG		
	46	215	164	GAPI

CNTA DETECTOR CALIBRATION SUMMARY

NRAT	TANK		JIG	
	CALIBRATED	MEASURED	CALIBRATED	MEASURED
	0.0	2.26	2.15	2.26

PGTK DETECTOR CALIBRATION SUMMARY

		BLOCK		JIG		UNITS
		CALIBRATED	MEASURED	CALIBRATED	MEASURED	
FFDC	336	417	328	CPS		
NFDC	527	777	563	CPS		

PGTK CALIPER CALIBRATION SUMMARY

CALI	MEASURED		CALIBRATED		UNITS
	SMALL	LARGE	SMALL	LARGE	
	8.8	12.5	8.0	12.0	IN

5  
5  
5  
5  
5

Run 3 AFTER SURVEY TOOL CHECK SUMMARY

NRAT 0.0 2.26 2.15

PGTK DETECTOR CALIBRATION SUMMARY

	BLOCK		JIG		UNITS
	MEASURED	CALIBRATED	MEASURED	CALIBRATED	
FFDC	336		417	328	CPS
MFDC	527		777	563	CPS

PGTK CALIPER CALIBRATION SUMMARY

CALI	MEASURED		CALIBRATED		UNITS
	SMALL	LARGE	SMALL	LARGE	
	8.0	12.5	8.0	12.0	IN

20510

Run 3 AFTER SURVEY TOOL CHECK SUMMARY

PERFORMED: 79/05/19  
PROGRAM FILE: NUC (VERSION 12.4A 78/12/ 8)

CNTA TOOL CHECK

NRAT	JIG	
	BEFORE	AFTER
	2.15	2.16

POROSITY CHANGE (LIME): 0.001

PGTK TOOL CHECK

	JIG		UNITS
	BEFORE	AFTER	
FFDC	328	329	CPS
MFDC	563	564	CPS

20510  
20510  
20510  
20510  
20510

Run 3 SHDP SUMMARY

PERFORMED: 79/05/16  
PROGRAM FILE: SHDP (VERSION 12.4 78/12/ 8)

PGTK DETECTOR CALIBRATION SUMMARY

	BLOCK		JIG		UNITS
	MEASURED	CALIBRATED	MEASURED	CALIBRATED	
FFDC	428	336	428	337	CPS
MFDC	728	527	728	527	CPS

(PGS:194 , PGC:108 , SFT:27 )

20510  
20510  
20510  
20510  
20510

Run 3 SHDP SUMMARY

PERFORMED: 79/05/07  
PROGRAM FILE: SHDP (VERSION 12.4 78/12/ 8)

CNTA DETECTOR CALIBRATION SUMMARY

NRAT	TANK		JIG	
	MEASURED	CALIBRATED	MEASURED	CALIBRATED
	2.25	2.15	2.25	2.16

(CNC:1488 , CNB:1559 )

4  
4  
4  
4