

G102564 - DOC4

Schlumberger		BOREHOLE COMPENSATED SONIC LOG	
COMPANY E G & G			
WELL INEL # 1			
FIELD WILDCAT			
COUNTY RUTTE		STATE IDAHO	
LOCATION		APR SERIAL NO. SEC. TWP. RANGE	
APR SERIAL NO. SEC. TWP. RANGE		APR SERIAL NO. SEC. TWP. RANGE	
Permanent Datum: GROUND LEVEL Elev. 4874.8		Other Services: DIL, FDC/CML/GR, BGT-CALIPER, HRT	
Log Measured From: GL 0 Ft. Above Perm. Datum		Elev. KB 4895	
Drilling Measured From: GL		DF 4874.8	
Run No.	3/27/79	5/10/79	5/17/79
Depth-Driller	ONE	TWO	THREE
Depth-Logger (Schl.)	3555 (STRAP)	9116	10333
Btm. Log Interval	3551	9102	10125
Top Log Interval	1296	9091	10122
Casing-Driller	20 @ 1511	3 3/8 @ 3559	13 3/8 @ 3559
Casing-Logger	1511	3559	NOT LOGGED
Bit Size	17.50	12.2	12.25
Type Fluid in Hole	LCND	FRSEH WATER	WATER
Dens. / Visc.	8.9 / 57	10.8 / 100	10.8 / 100
pH / Fluid Loss	8.0 / 113.6 ml	10.8 / 100 ml	10.8 / 100 ml
Source of Sample	MUD TANK	MUD TANK	MUD TANK
Rm @ Meas. Temp.	8.57 @ 70 F	15.5 @ 58 F	15.5 @ 58 F
Rmf @ Meas. Temp.	8.94 @ 59 F	15.5 @ 58 F	15.5 @ 58 F
Rmc @ Meas. Temp.	12.86 @ 70 F	15.5 @ 58 F	15.5 @ 58 F
Source: Rmf / Rmc	M / C	M / C	M / C
Rm @ BHT	5.22 @ 116 F	9.94 @ 228 F	11.80 @ 257 F
Circulation Stopped	3/27 @ 1300	0500	0200
Logger on Bottom	3/27 @ 1300	1700	1930
Max. Rec. Temp.	116 F	228 F	257 F
Equip. Location	8060 LEVSTN	7674 WERNAL	8036 LEVSTN
Recorded By	ROONEY	GALES/VALENTI	BRADLEY
Witnessed By Mr.	STRAWN/NELSON	GOLDMAN	STRAWN

Reproduced By
Electrical Log Services
MIDLAND, TEXAS 79701

REFERENCE K 3672X



COMPLETION RECORD

SPUD DATE _____

COMP DATE _____

DST RECORD _____

API NO. 11-023-60001

CASING RECORD _____

PERFORATING RECORD _____

ACID. FRAC SHOT _____

IP _____

GOR GR

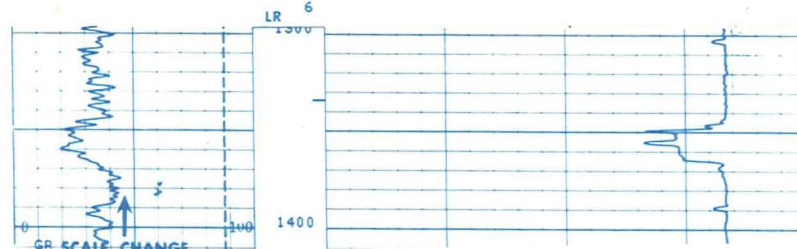
TP CP

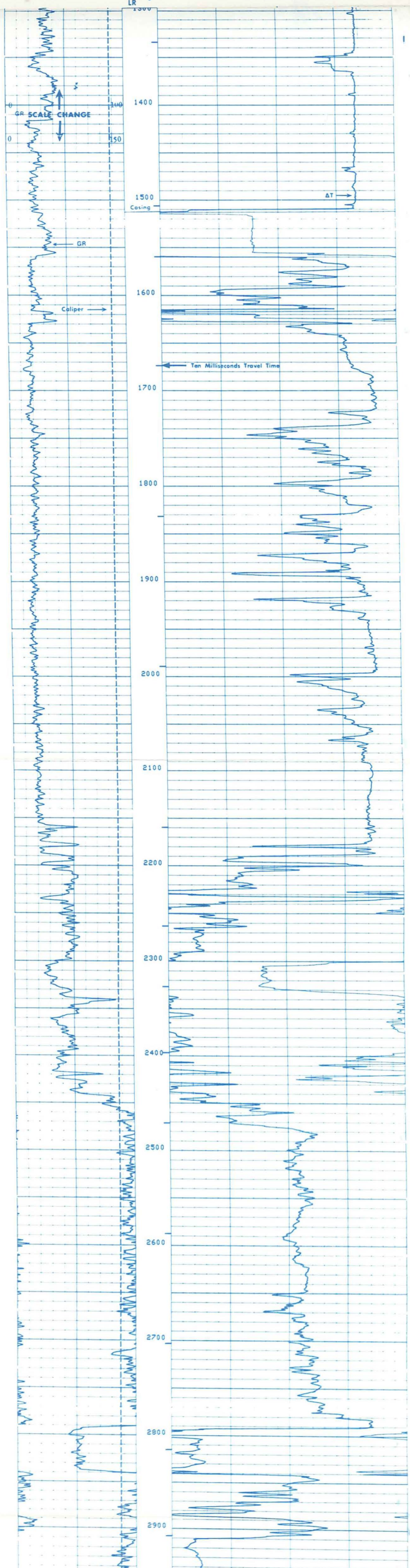
REMARKS: _____

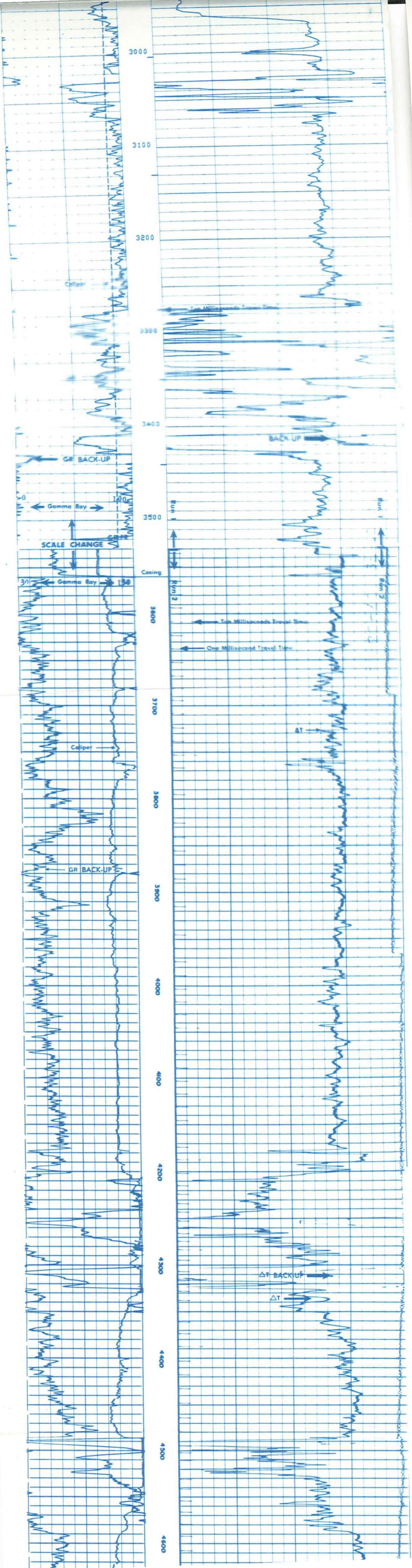
REPRODUCTION FOR RESALE PROHIBITED

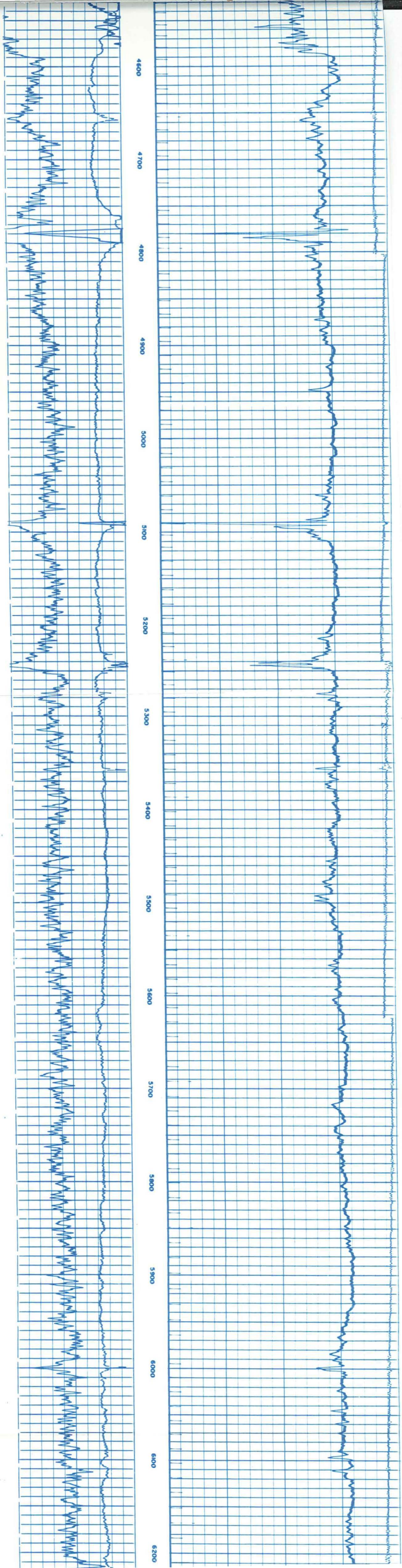
Run No.	ONE	TWO	THREE	SCALE CHANGES
Service Order No.	40303	3390	4054	Type Log
Fluid Level	FULL	FULL	FULL	Depth
				Scale Up Hole
				Scale Down Hole
EQUIPMENT DATA				
Sonic Panel No.	SLM 120	13	118	
Sonic Cart No.	10	1028	137	
Sonic Scribe No.	2030	2223	203	
Mem. Panel No.	CSU	ILB CA. 04	CSU	
G.R. Cart No.	84	549	1140	
G.R. Panel No.	LM 178	ILB CA. 04	124	
Caliper No.	VCD 905	1209	570	
TR No.	CSU	1903	CSU	
Centralizers No.	ONE ONE 1	ONE	ONE	
Standoffs No.	CMEZ VCD	CMEZ	CMEZ	
Type				
Time Const. Sec.	AUTO	AUTO	AUTO	
Speed - F.P.M.	30	30-0	30	
CALIBRATION DATA				
BKG. CPS	41	140	44.43	
Source CPS	182	0	109.50	
Tc Sec	AUTO	AUTO	AUTO	
LOGGING DATA				
Porosity Selectors		Depth		
1m	1/4	0	Scale	
513	189	10	20/TRK 3051 1296	
513	189	1	20 TRK 2091 3050	
513	189	100	20 TRK 10122 92	
REMARKS: CALIPER MAX OPENING - 14.4				
RUN 2 MAX CALIPER READING 15.0				
1. INVALID INTEGRATED TRAVEL				
TIME AT 95.0 DUE TO C-CLE SKIP				
C-CLE SKIP - BELOW 9300 CORRECTED				
REPEAT RUN 3 GR BACKUP SCALE 1-7-207				
Velocity (ft/sec) = 1000.000				
Interval Transit Time (microseconds per foot)				

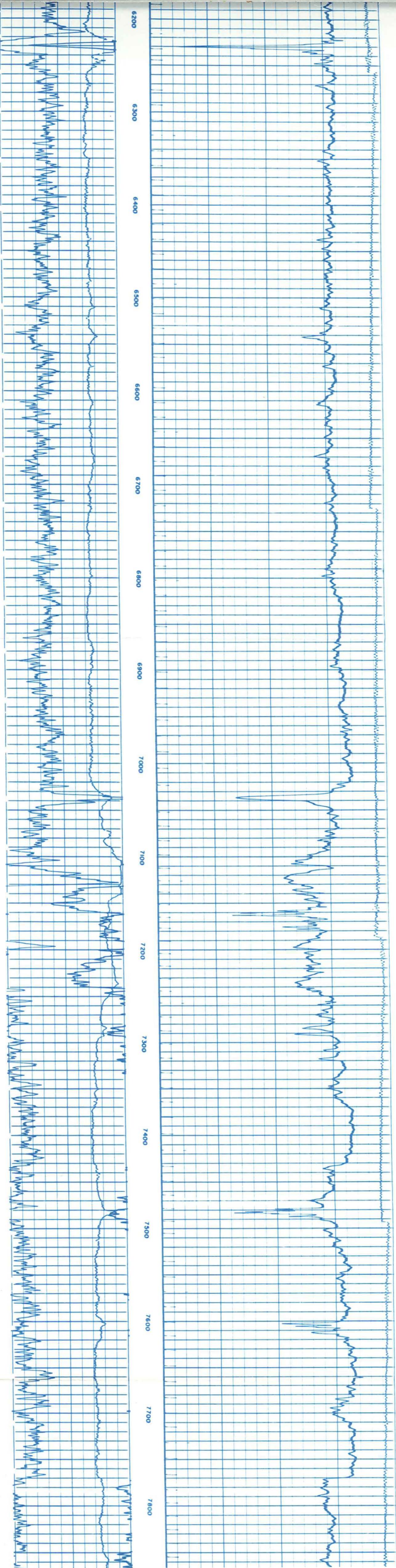
GR (GAPI)	DT (US/F)
0.000	16.00
0.0	100.0
140.0	40.00
240.0	140.0

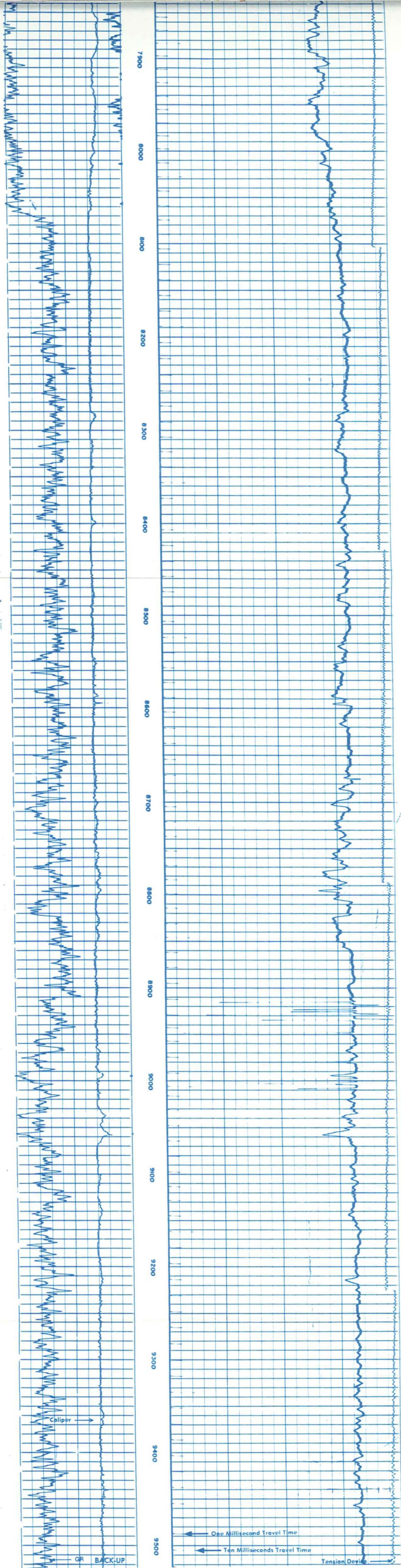


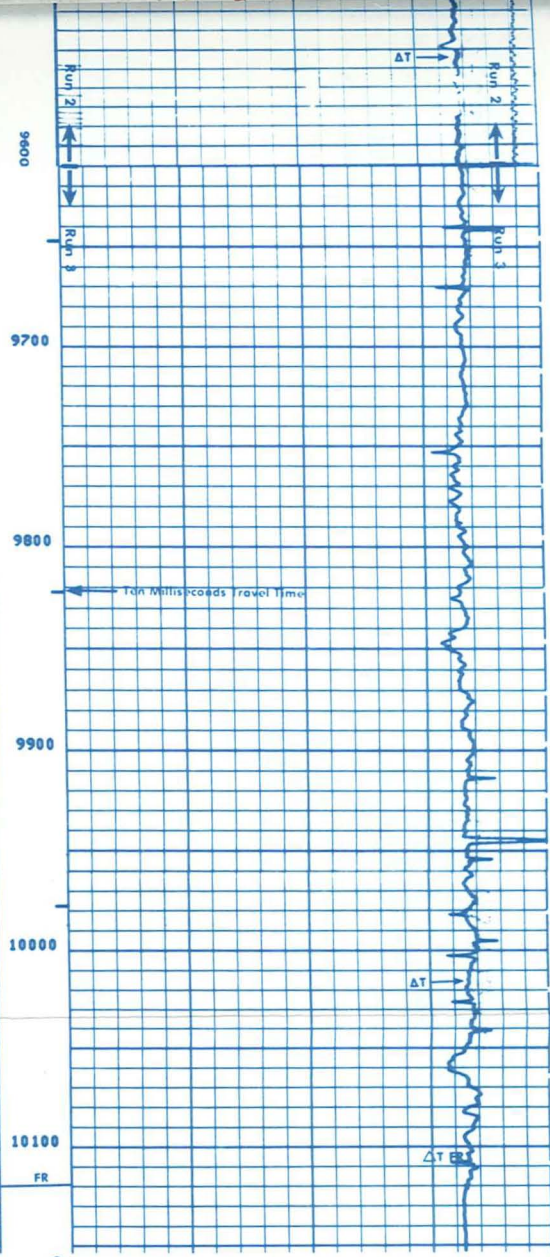
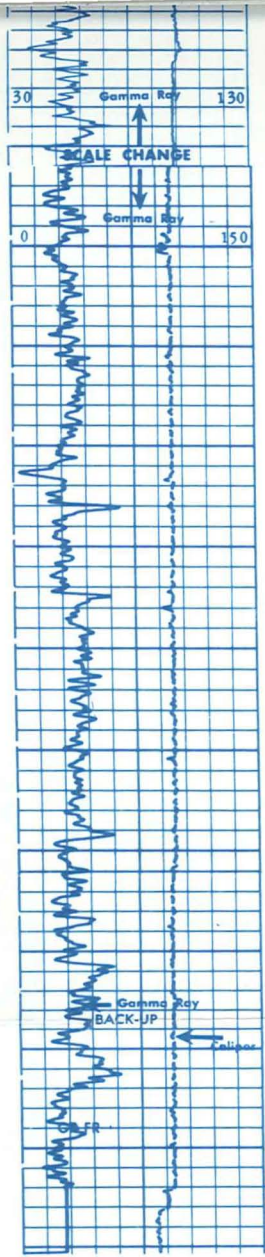










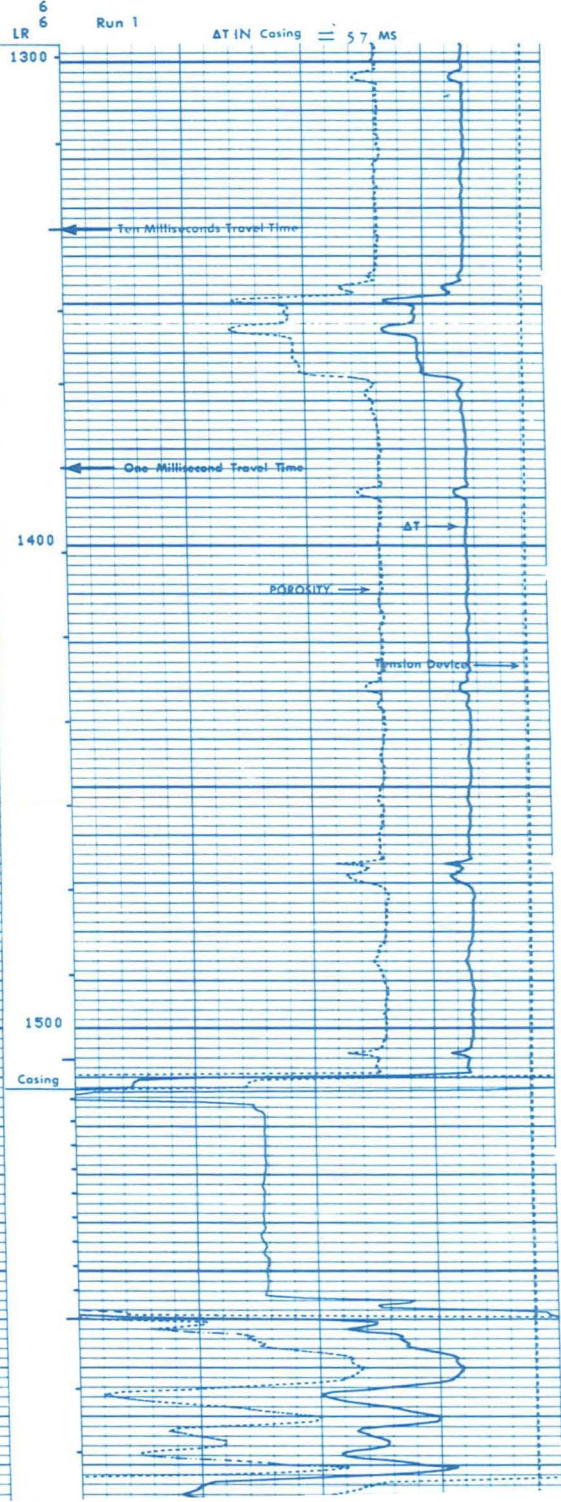
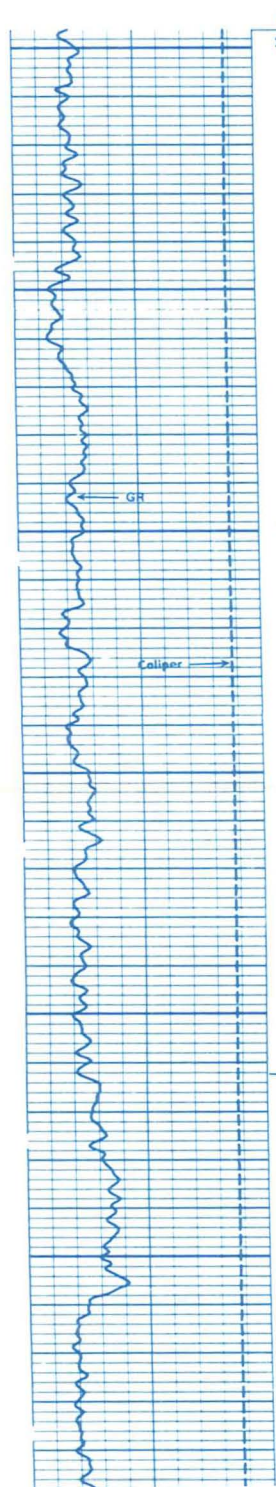


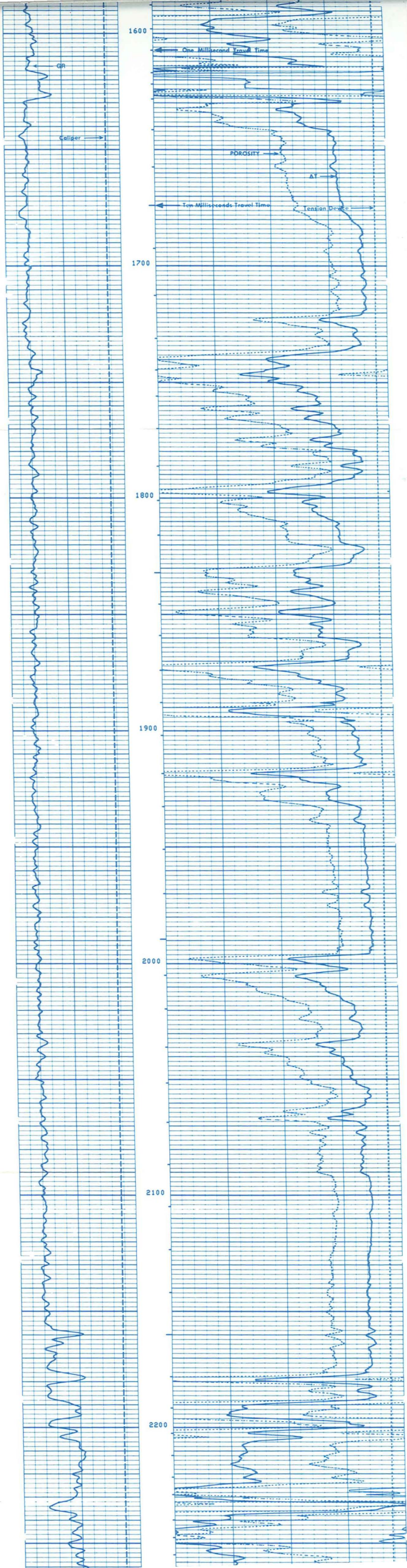
CALI(IN)	
6.000	16.00
GR (GAPI)	
0.0	150.0

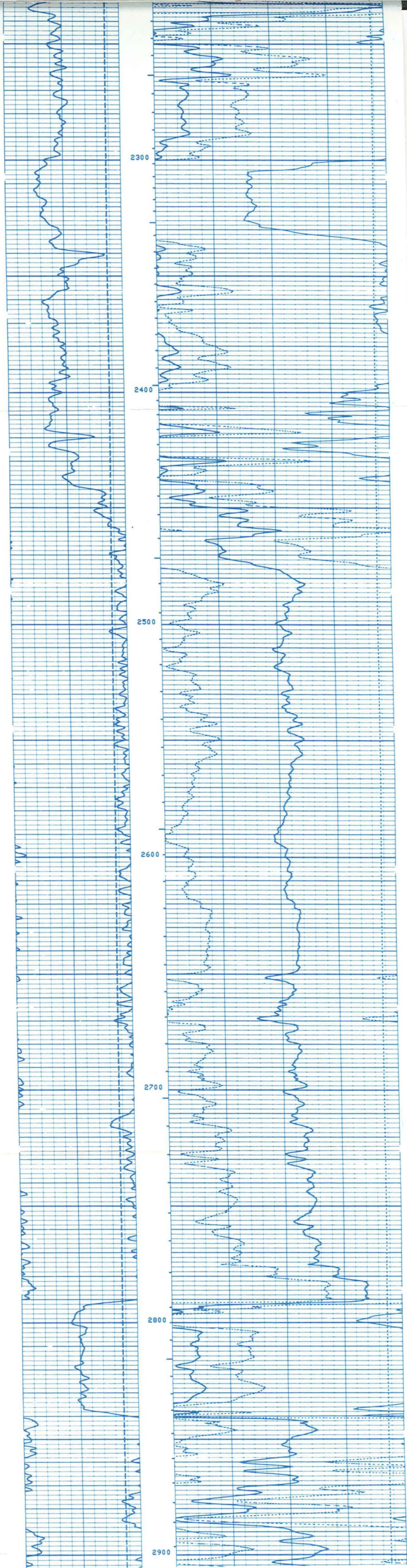
DT (US/F)	
140.0	40.00
DT (US/F)	
240.0	140.0

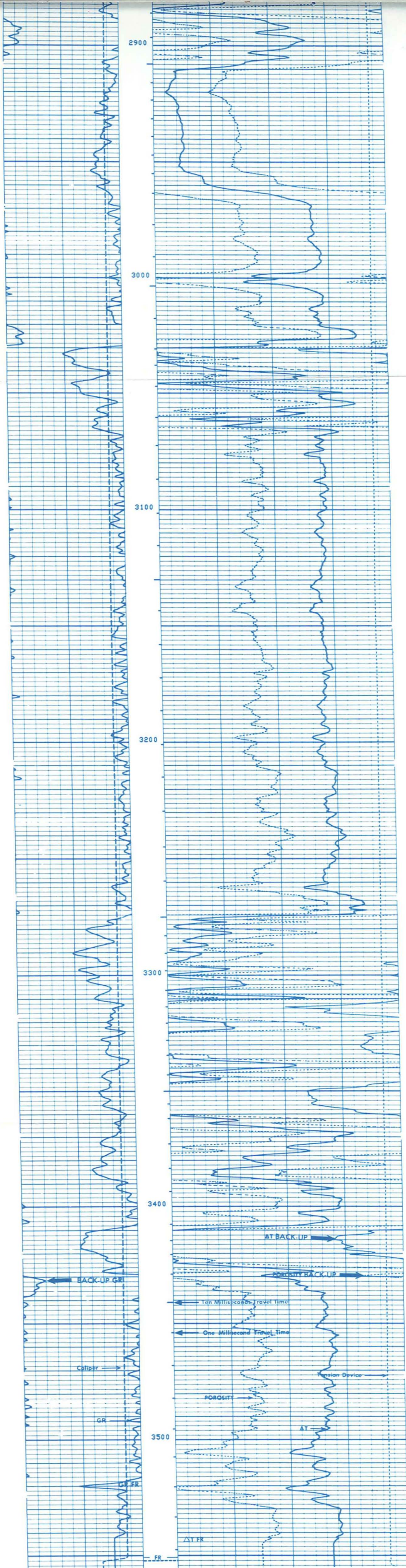
CALI(IN)	
6.000	16.00
GR (GAPI)	
0.0	100.0

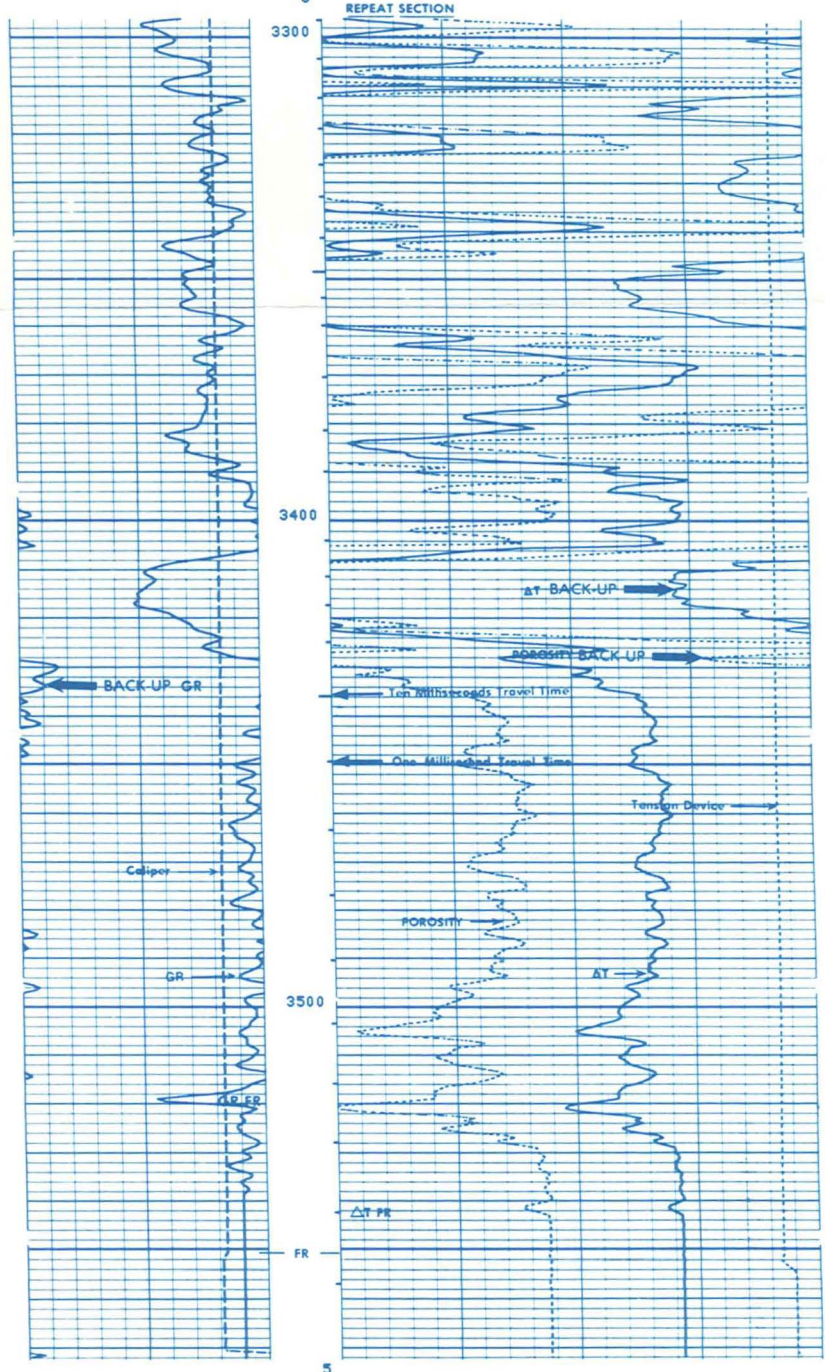
TENS(LB)	
10000.	0.0
DT (US/F)	
140.0	40.00
DT (US/F)	
240.0	140.0
SPHI()	
0.3000	-0.100









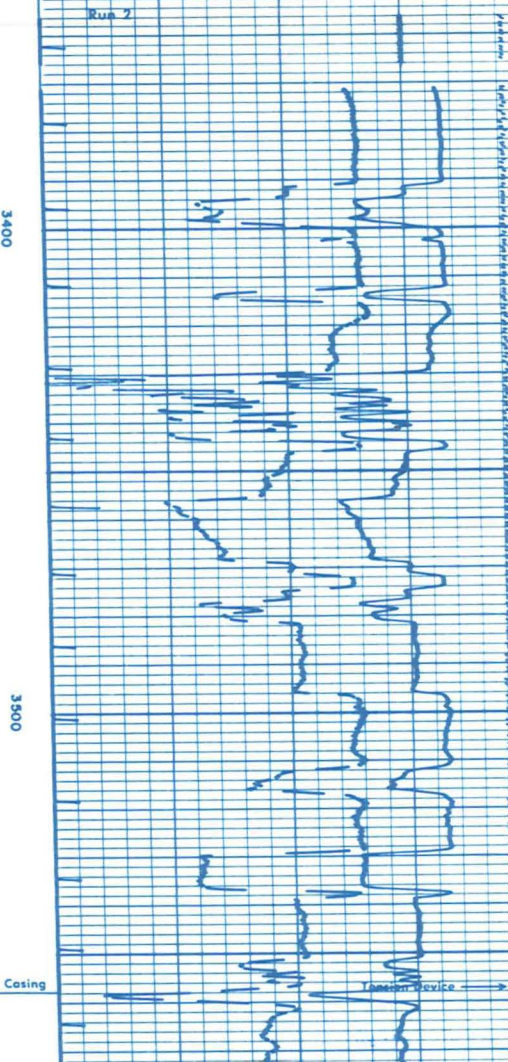
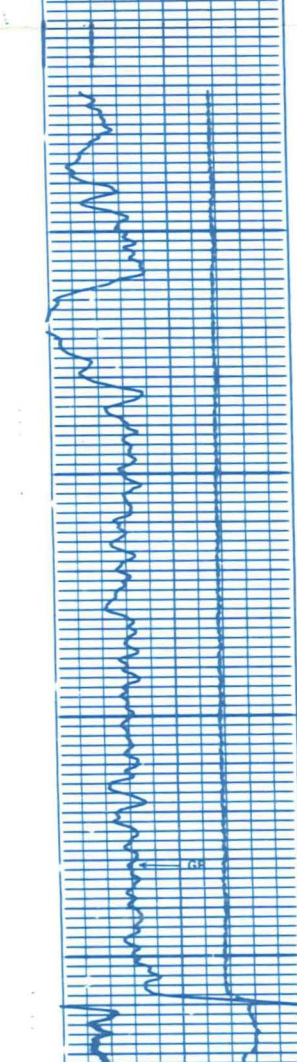


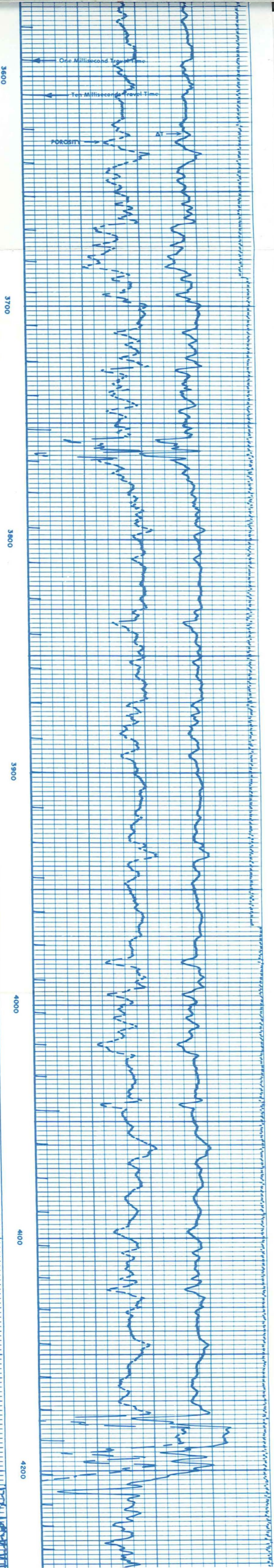
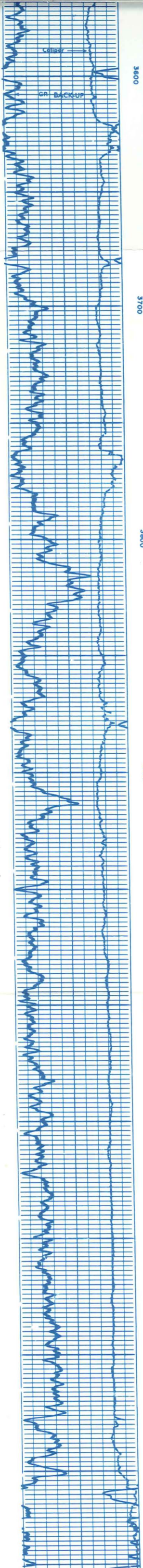
CALIPER	
6.000	16.00
GR (GAPI)	
0.0	150.0

TENS(LB.)		0.0
DT (US/F)	140.0	Range 0.00
DT (US/F)	240.0	Range 0.0
SPHI()	0.3000	Range -0.100

CALIPER		DIAM. IN INCHES	
6	16		
GAMMA RAY		API UNITS	
30	130		
130	230		

INTERVAL TRANSIT TIME		MICROSECONDS PER FOOT		T. 3R. GR.	
140	90			40	
240	190			140	
INTEGRATED TRAVEL TIME					
SONIC POROSITY INDEX $\Delta T - 51.3$ MATRIX					
30	20	10	0		-10





3600

3700

3800

3900

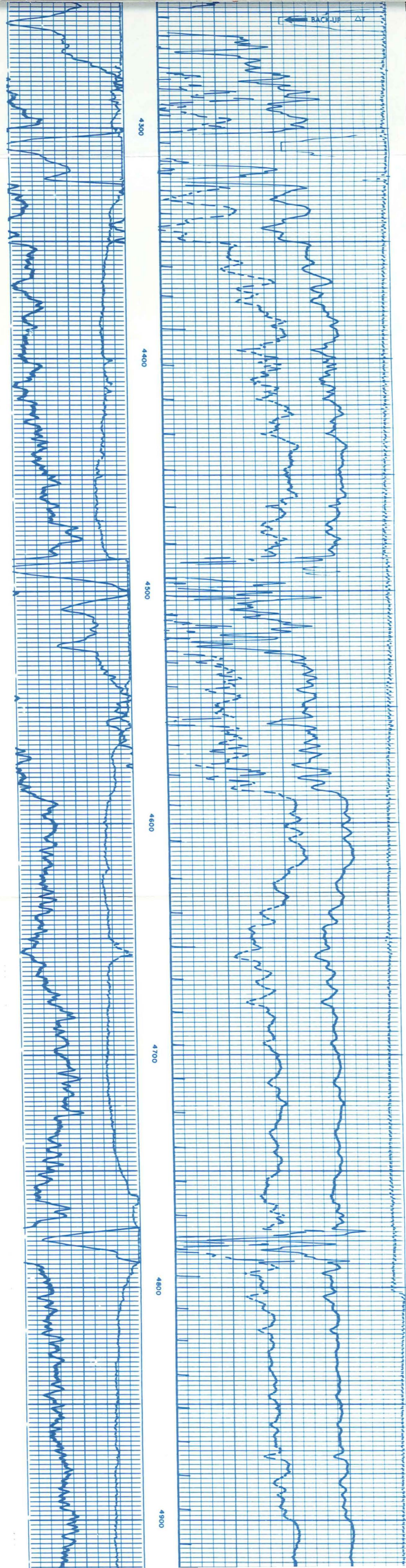
4000

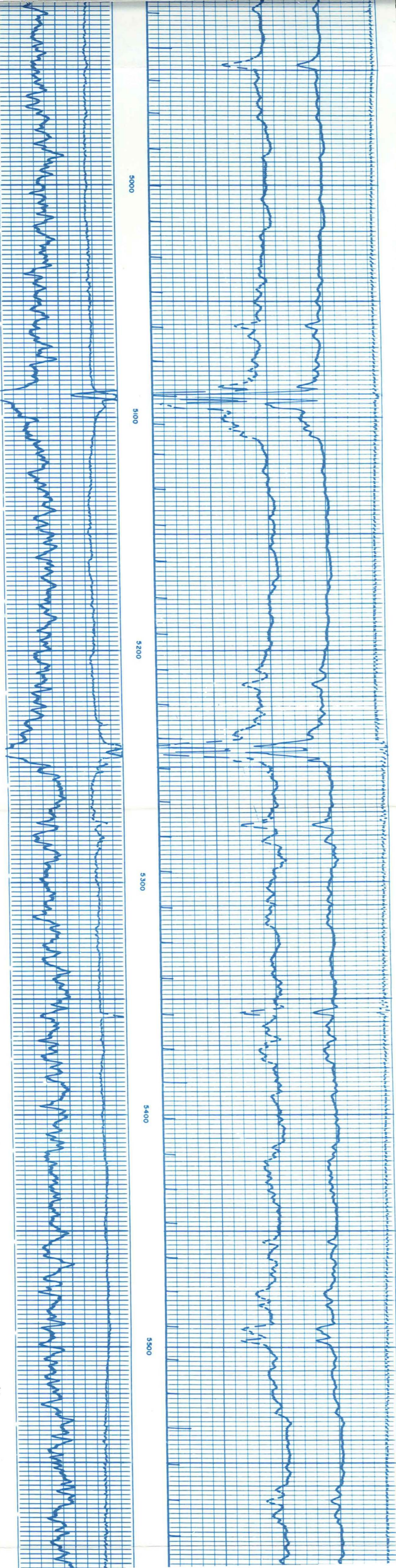
4100

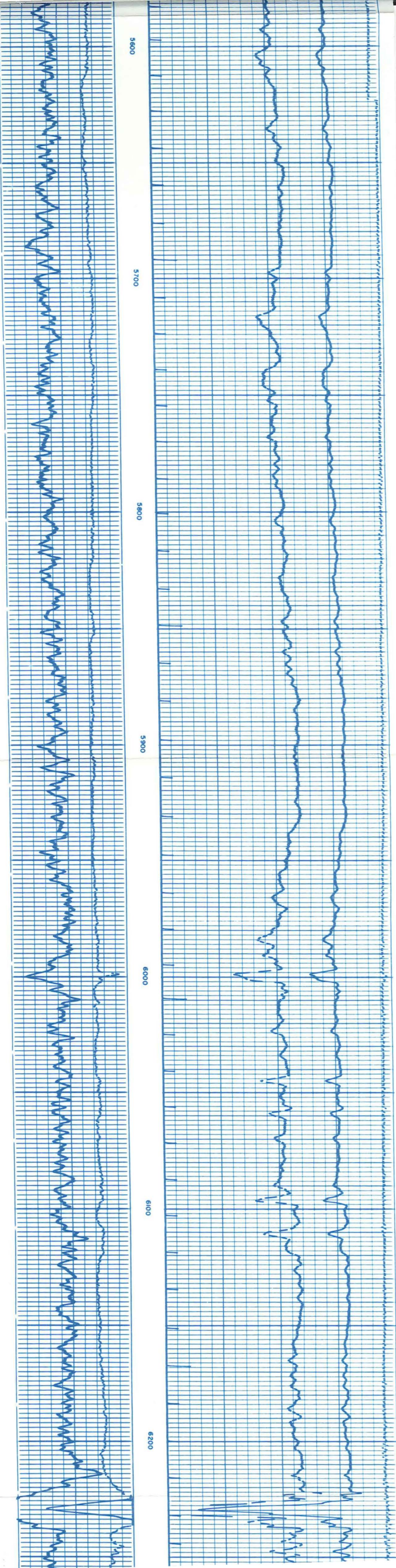
4200

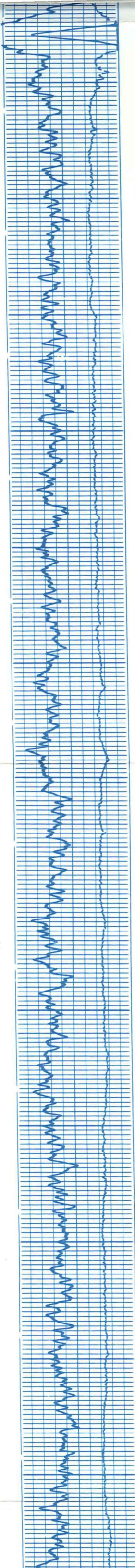
BACK UP Δ

4300 4400 4500 4600 4700 4800 4900









6300

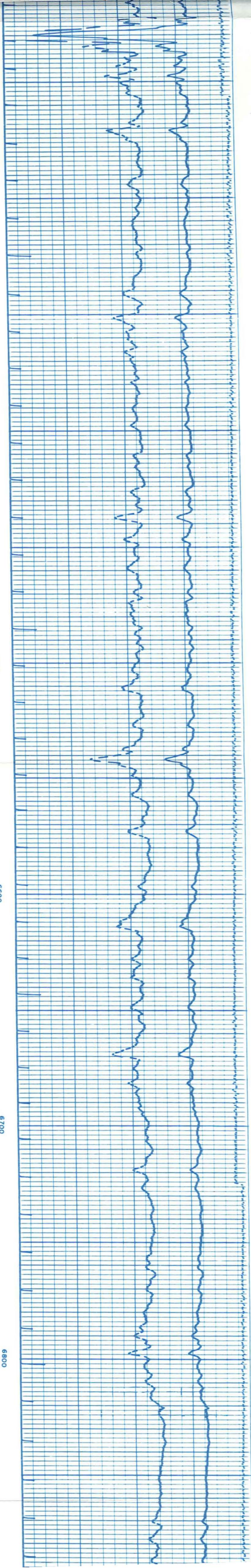
6400

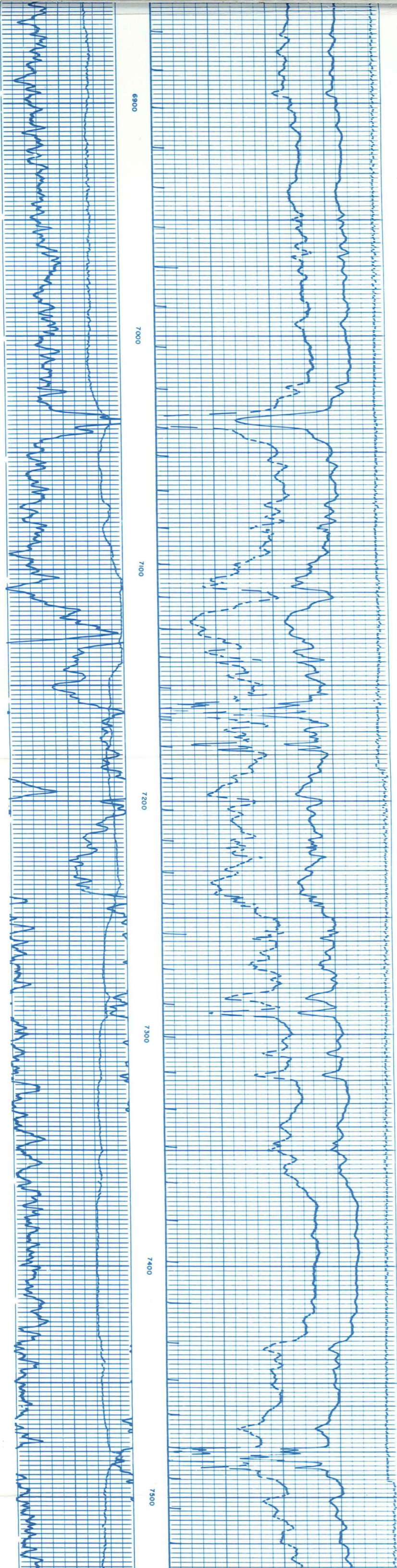
6500

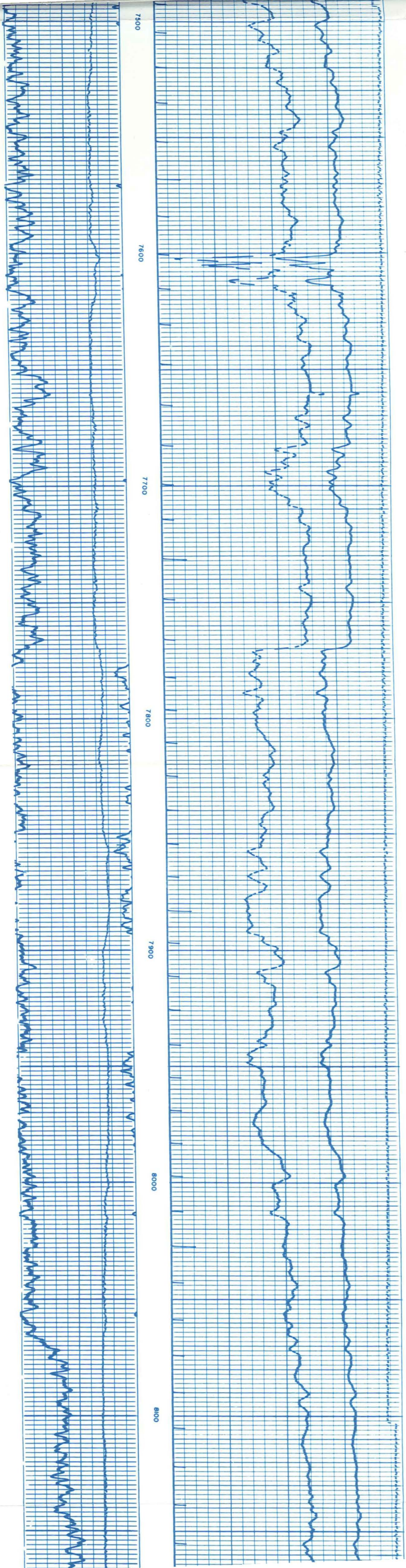
6600

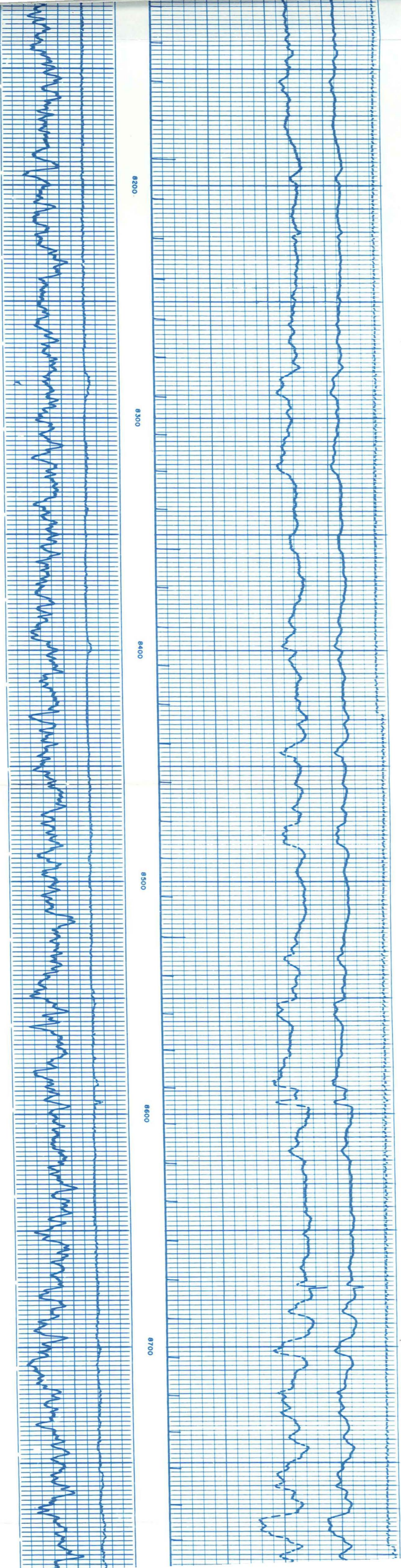
6700

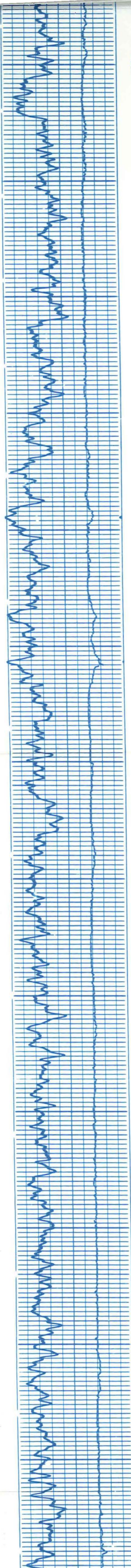
6800











0088

0068

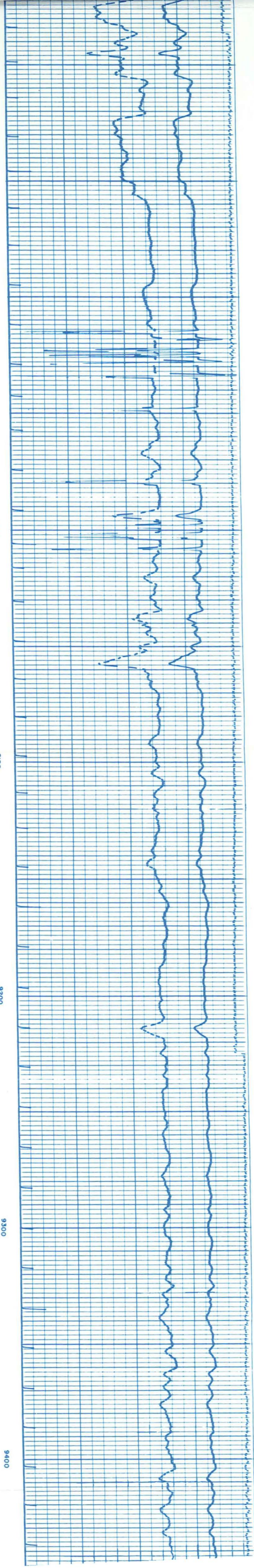
9000

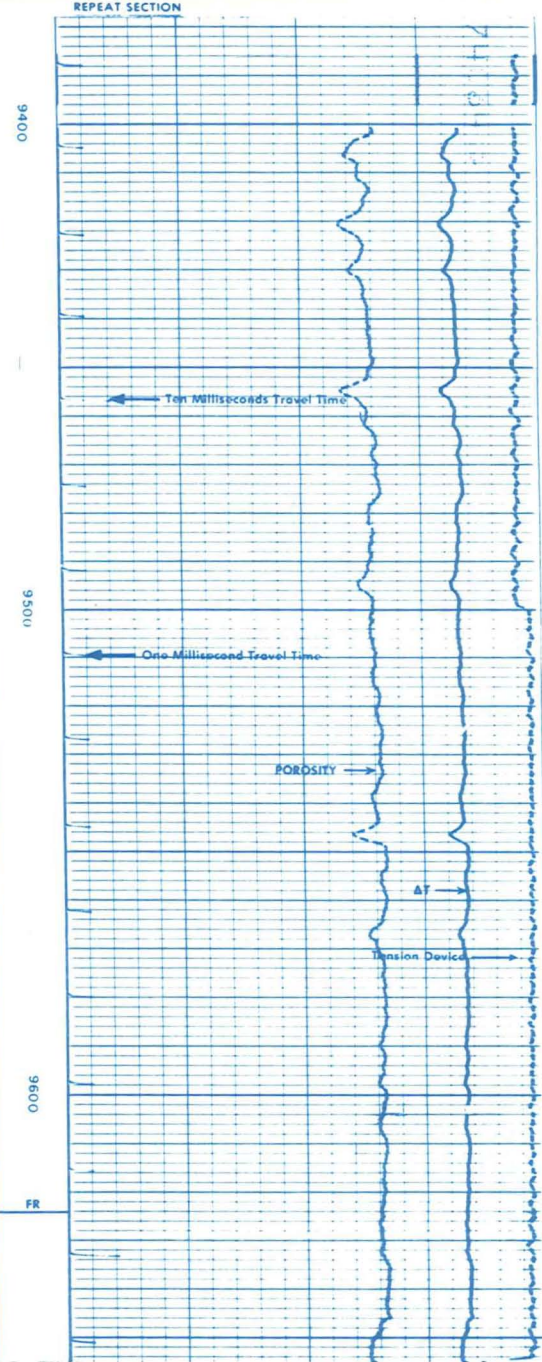
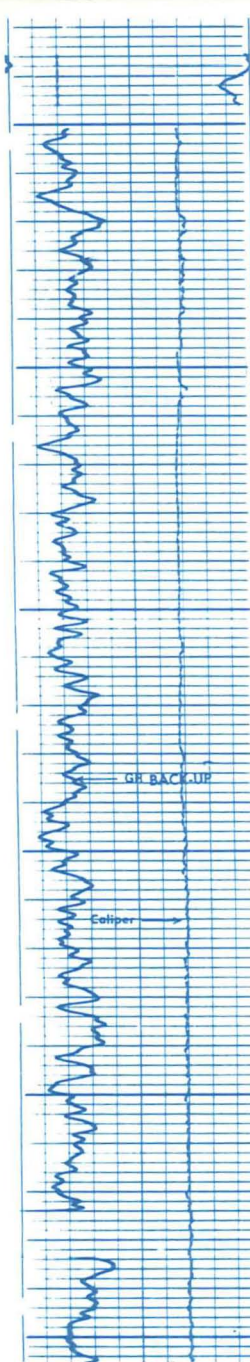
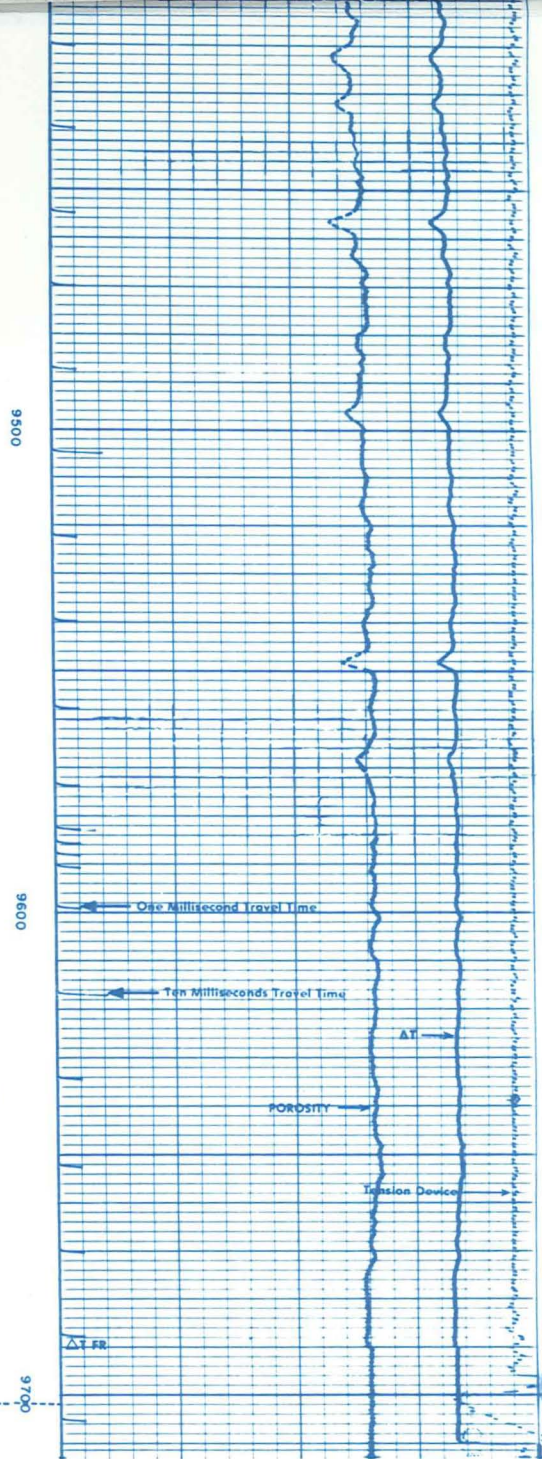
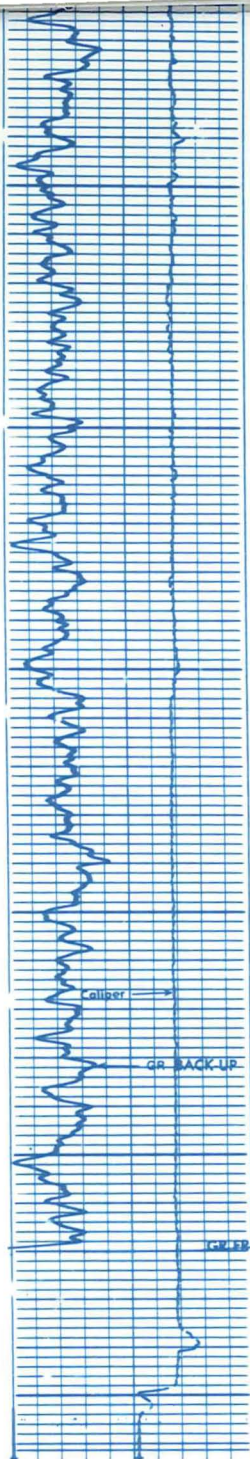
9100

9200

9300

9400





6.000	CAL (IN)	16.00
30	GR (GAPI)	130.0

140.0	DT (US/F)	40.00
240.0	DT (US/F)	140.0

Gamma Ray
SCALE CHANGE

Run 3

10000. TENS(LB)
DT (US/F)

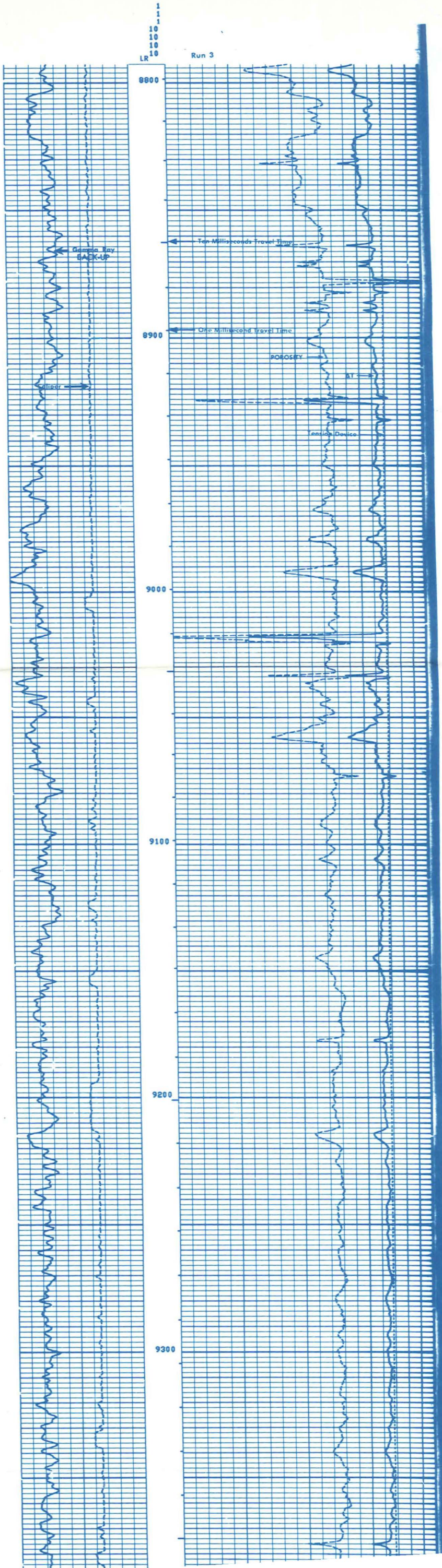
Run 3

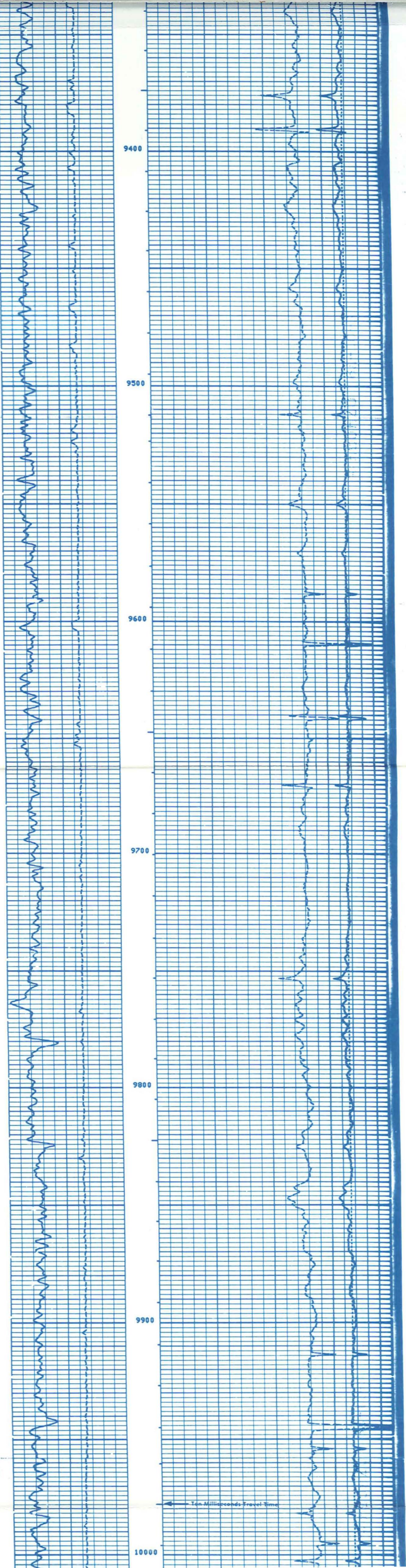
REPEAT SECTION

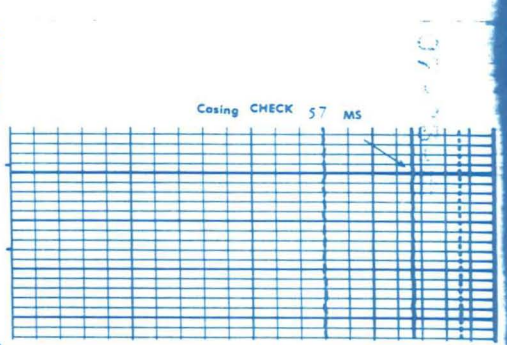
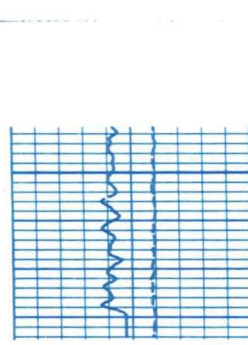
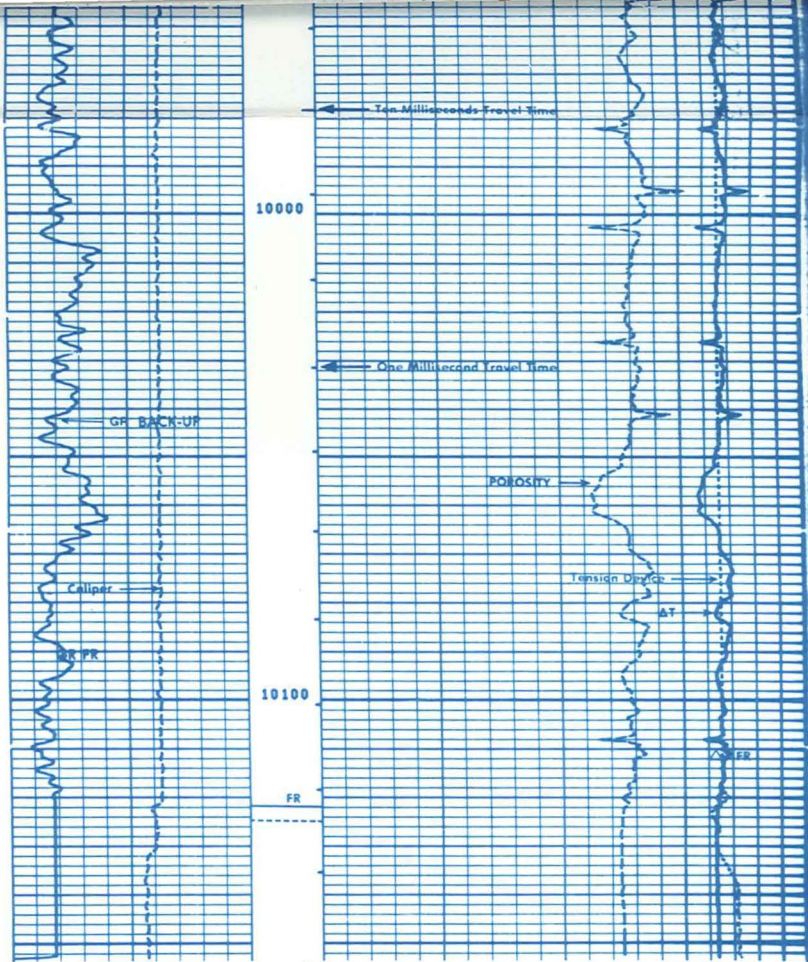
Gamma Ray
SCALE CHANGE
Run 3

6.000	CAL I (IN)	16.00
0.0	GR (GAPI)	150.0

10000.	TENS(LB)	0.0
140.0	DT (US/F)	40.00
240.0	DT (US/F)	140.0
0.3000	SPHS ()	-0.100







Casing CHECK 57 MS

CAL (IN)	
6.000	16.00
GR (GAPI)	
0.0	150.0

TERR(LR)	
10000.	0.0
RT (US/F)	
140.0	140.00
RT (US/F)	
240.0	140.0
SPHIC	
0.3000	0.100

8
4
4
4
4

1000

Run 1 BEFORE SURVEY CALIBRATION SUMMARY

PERFORMED: 79/03/27
PROGRAM FILE: IS (VERSION 12.4A 78/12/8)

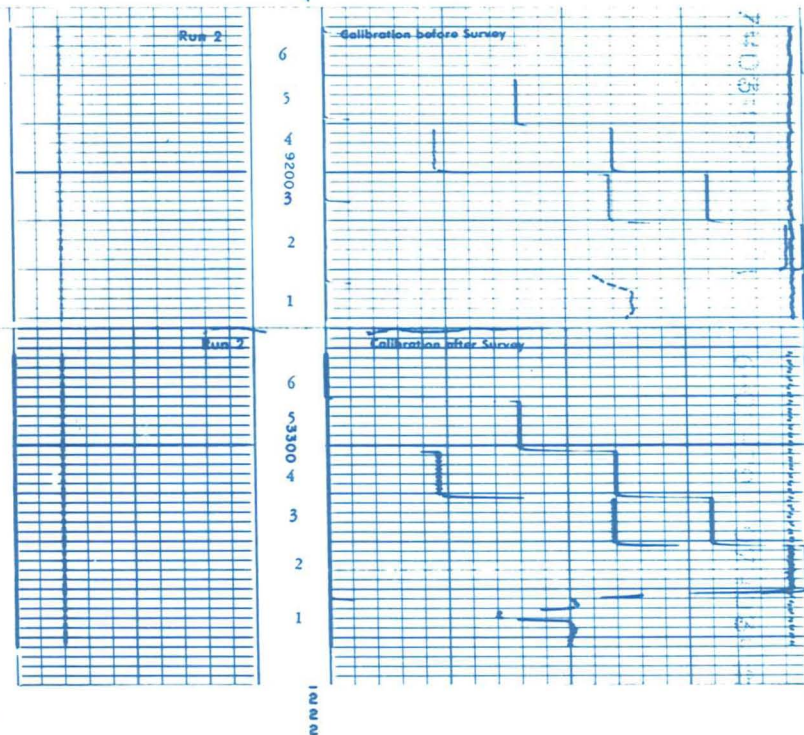
SGTE DETECTOR CALIBRATION SUMMARY

GR	MEASURED		CALIBRATED	UNITS
	BKGD	JIG		
	41	182	164	GAPI

VCDD CALIPER CALIBRATION SUMMARY

CALI	MEASURED		CALIBRATED		UNITS
	SMALL	LARGE	SMALL	LARGE	
	6.6	12.0	7.9	11.9	IN

4
4
4
4
4



Run 3 BEFORE SURVEY CALIBRATION SUMMARY

PERFORMED: 79/05/18
PROGRAM FILE: IS (VERSION 12.4A 78/12/8)

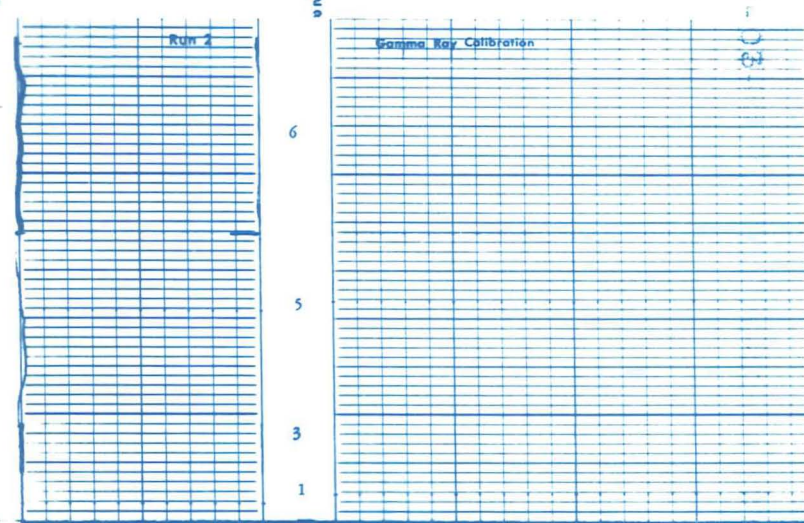
SGTE DETECTOR CALIBRATION SUMMARY

GR	MEASURED		CALIBRATED	UNITS
	BKGD	JIG		
	44	189	164	GAPI

MCDD CALIPER CALIBRATION SUMMARY

CALI	MEASURED		CALIBRATED		UNITS
	SMALL	LARGE	SMALL	LARGE	
	4.2	8.1	8.0	12.0	IN

2
9



BOREHOLE COMPENSATED SONIC CALIBRATION CODING

1. MECHANICAL ZERO
2. 40 - SEC FT
3. 60 - SEC FT
4. 80 - SEC FT
5. 100 - SEC FT
6. 140 - SEC FT

GAMMA RAY CALIBRATION CODING

1. MECHANICAL ZERO
2. ELECTRICAL ZERO
3. RECORDER SENSITIVITY
4. MEMORIZER ADJUSTMENT
5. BACKGROUND
6. CALIBRATION