

GL02577
Schlumberger

UNCOMPENSATED FORMATION
DENSITY BEFORE CEMENTATION

COUNTY _____
FIELD _____
LOCATION _____
WELL _____
COMPANY _____

COMPANY E G & G
WELL INEL # 1
FIELD WILDCAT
COUNTY BUTTE STATE IDAHO
API SERIAL NO. _____ SEC. 1 TWP 3N RANGE 29E
Other Services: NONE

Permanent Datum: GL; Elev.: 4874.86
Log Measured From: GL 0 Ft. Above Perm. Datum
Drilling Measured From: GL
Elev.: 4895
D.F. 4874.86

Date	<u>3/10/79</u>	<u>3/29/79</u>	
Run No.	<u>ONE</u>	<u>TWO</u>	
Depth-Driller	<u>1464</u>	<u>3516</u>	
Depth-Logger (Schl.)	<u>1469</u>	<u>3514</u>	
Btm. Log Interval	<u>1466</u>	<u>3512</u>	
Top Log Interval	<u>17</u>	<u>1290</u>	
Casing-Driller	<u>20" @ 1464</u>	<u>13 3/8" @ 3516</u>	<u>@</u>
Casing-Logger	<u>1469</u>	<u>3514</u>	
Bit Size	<u>26</u>	<u>17.50</u>	
Type Fluid in Hole	<u>WATER</u>	<u>WATER</u>	
Dens. Visc.			
pH Fluid Loss			
Source of Sample			
Rm @ Meas. Temp.	<u>@</u>	<u>@</u>	<u>@</u>
Rmf @ Meas. Temp.	<u>@</u>	<u>@</u>	<u>@</u>
Rmc @ Meas. Temp.	<u>@</u>	<u>@</u>	<u>@</u>
Source: Rmf Rmc			
Rm @ BHT	<u>@</u>	<u>@</u>	<u>@</u>
Circulation Stopped	<u>3/9 @ 1300</u>	<u>3/28 @ 1400</u>	
Logger on Bottom	<u>0200</u>	<u>3/29 @ 1900</u>	
Max. Rec. Temp.	<u>60 °F</u>	<u>123 °F</u>	
Equip. Location	<u>8073 EVSTIN</u>	<u>8060 EVSTIN</u>	
Recorded By	<u>BRADLEY</u>	<u>ROONEY</u>	
Witnessed By Mr.	<u>NEWMAN</u>	<u>NEWMAN</u>	

FOLD HERE The well name, location and borehole reference data were furnished by the customer.

Run No.	<u>ONE</u>	<u>TWO</u>	SCALE CHANGES			
Service Order No.	<u>74045</u>	<u>40303</u>	Type Log	Depth	Scale Up Hole	Scale Down Hole
API Serial No.						
Fluid Level	<u>FULL</u>	<u>FULL</u>				

EQUIPMENT DATA			
SGC-JC	<u>2055</u>	SGCJAA684	
FGC-J	<u>104</u>	PGC-G 65	
PGS-HB	<u>82</u>	PGS-EC59	
SFT-136	<u>25</u>	SFT-106606	
GSR-J	<u>5308</u>	GSR-J5025	
NLM-BB	<u>284</u>	NLMBB178	

REMARKS:
20" 94 # & 133 # CASING
RUN 2- 13 3/8" 72# CASING

CALIBRATION DATA			
Speed - F.P.M.		<u>30</u>	
GR	BKG. CPS API	<u>51</u>	<u>44</u>
	Source CPS API	<u>271</u>	<u>197</u>
	Tc	<u>AUTO</u>	<u>AUTO</u>
BEFORE	FFDC	<u>417</u>	<u>323</u>
	NFDC	<u>694</u>	<u>579</u>
AFTER	FFDC	<u>413</u>	<u>327</u>
	NFDC	<u>693</u>	<u>581</u>

All interpretations are opinions based on inferences from electrical or other measurements and we cannot, and do not guarantee the accuracy or correctness of any interpretations, and we shall not, except in the case of gross or willful negligence on our part, be liable or responsible for any loss, costs, damages or expenses incurred or sustained by anyone resulting from any interpretation made by any of our officers, agents or employees. These interpretations are also subject to Clause 4 of our General Terms and Conditions as set out in our current Price Schedule.

CALI (IN)	15.00	25.00
GR (GAPI)	0.0	150.0

RHOB (G/C3)	2.000	3.000
-------------	-------	-------

16
16
16
16
16
16

14
14
14
14

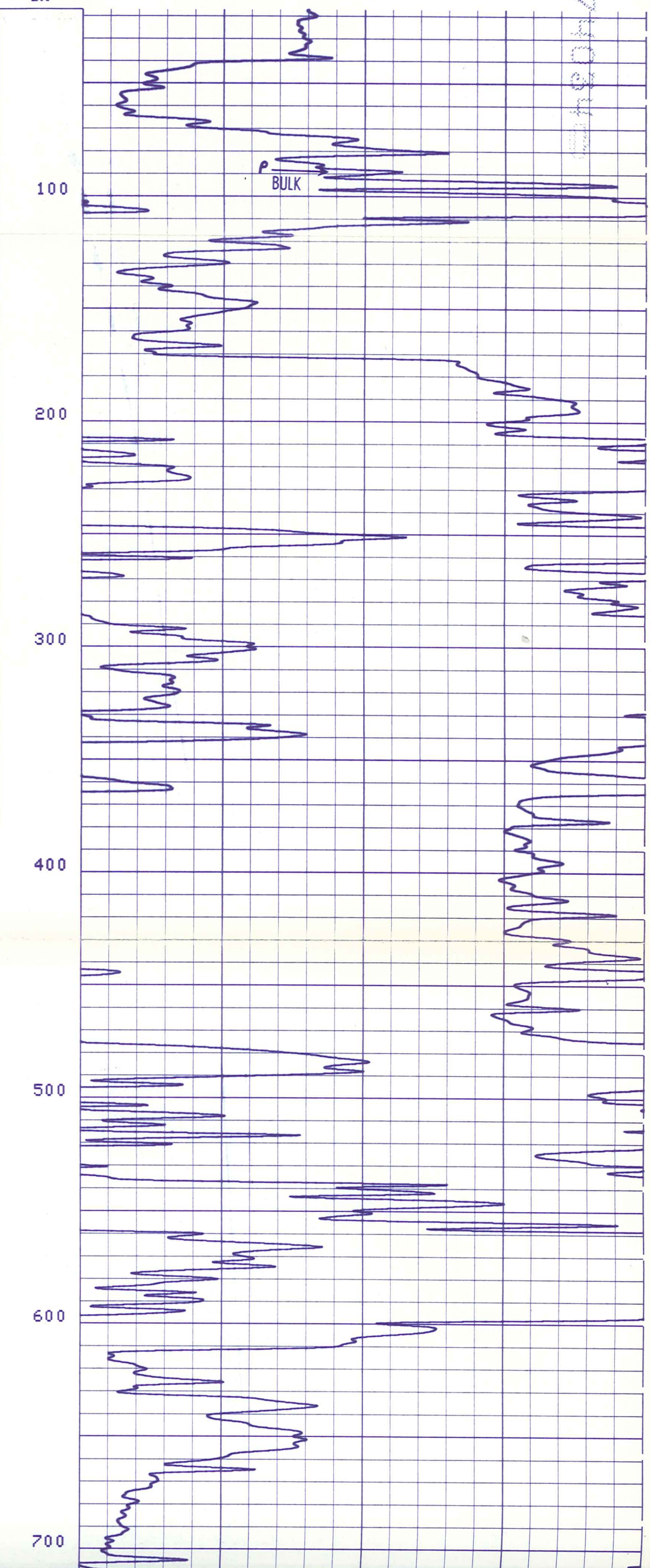
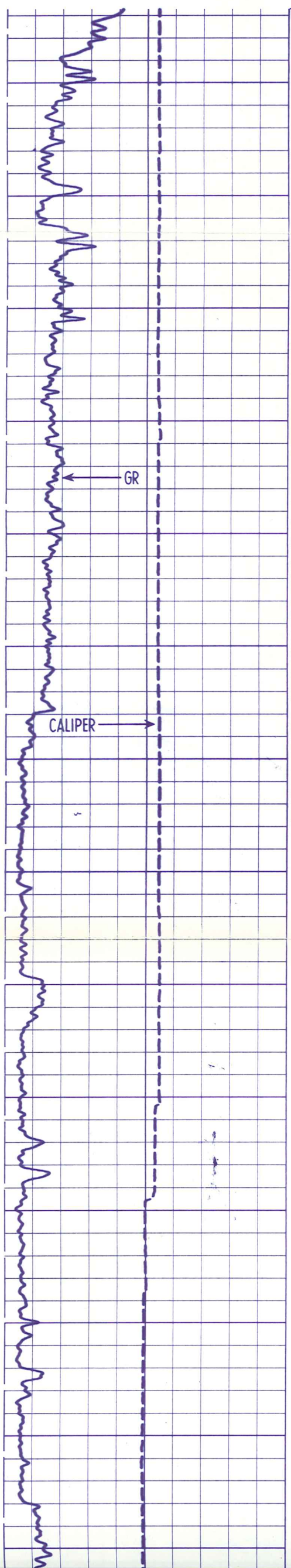
6-01-79 074045

6-01-79

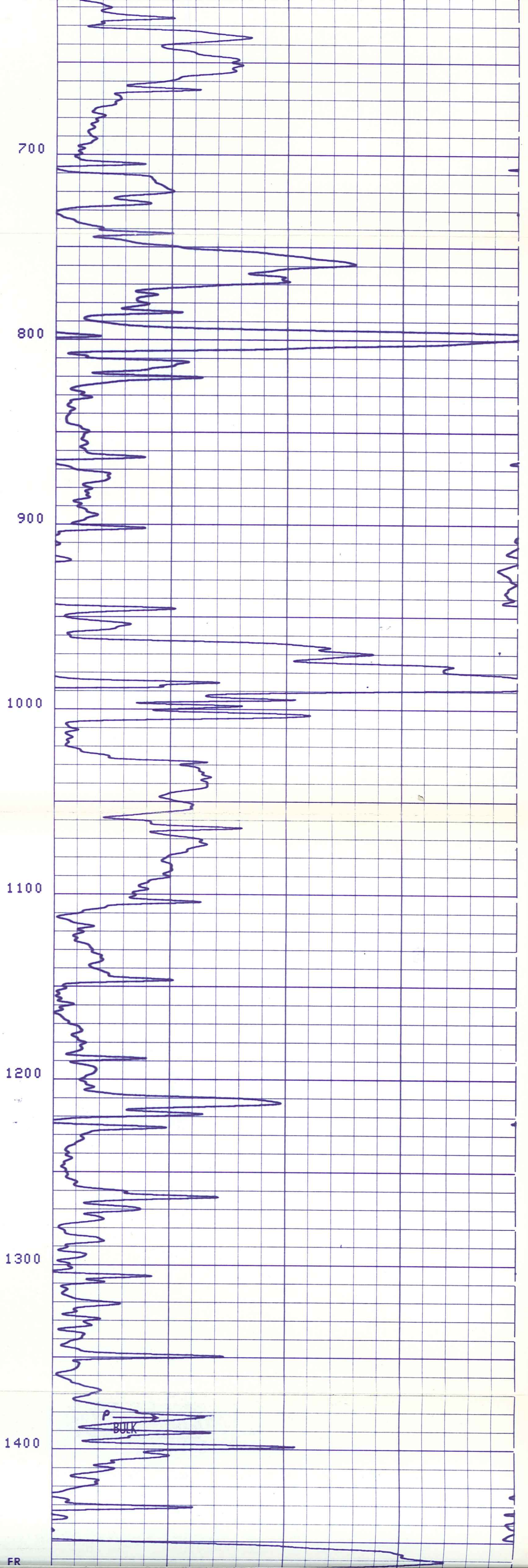
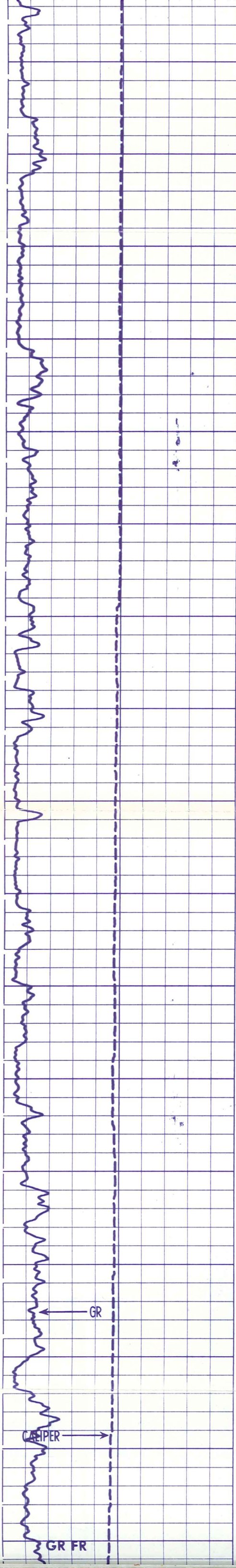
15.00 25.00
GR (GAPI)
0.0 150.0

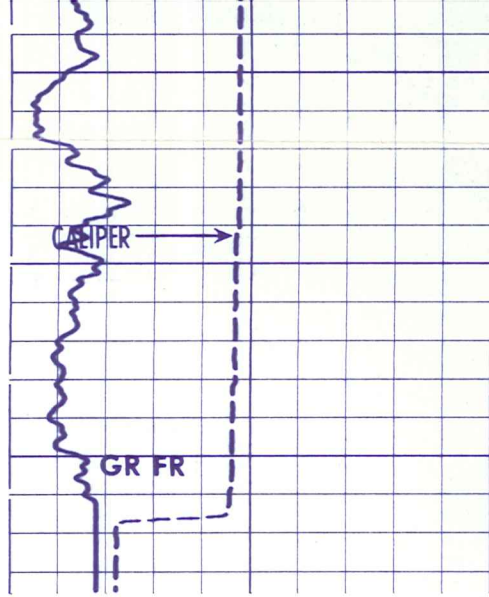
RHOB(G/C3)
2.000 3.000

16
16
16
16
16
16
14
14
14
14
14
14
LR

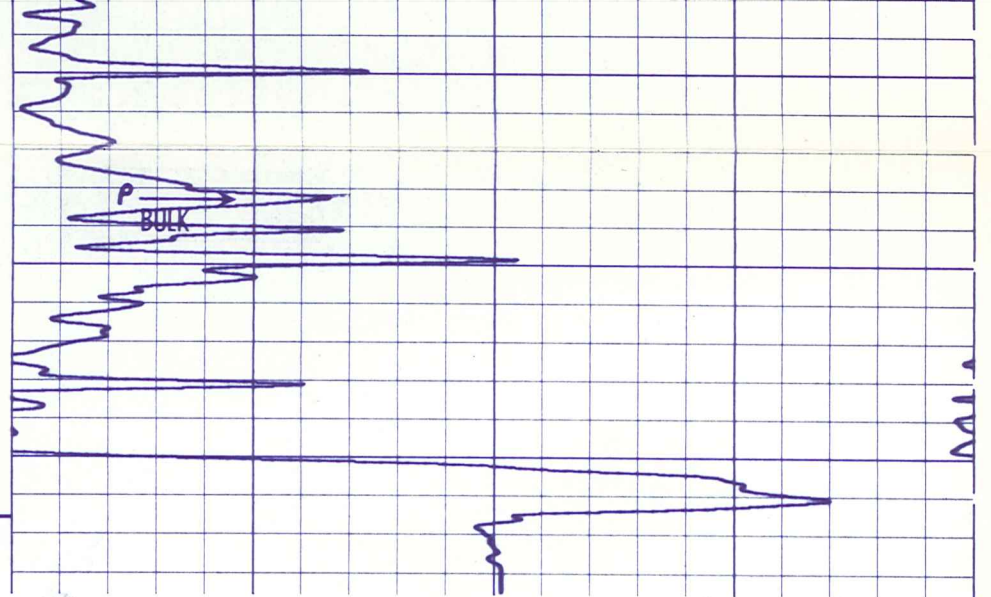


6-01-79 0740344





1400



FR

- 14
- 14
- 14
- 14
- 14
- 14

CALI(IN)	
15.00	25.00
GR (GAPI)	
0.0	150.0

RHOB(G/C3)	
2.000	3.000

- 11
- 11
- 11
- 11
- 11

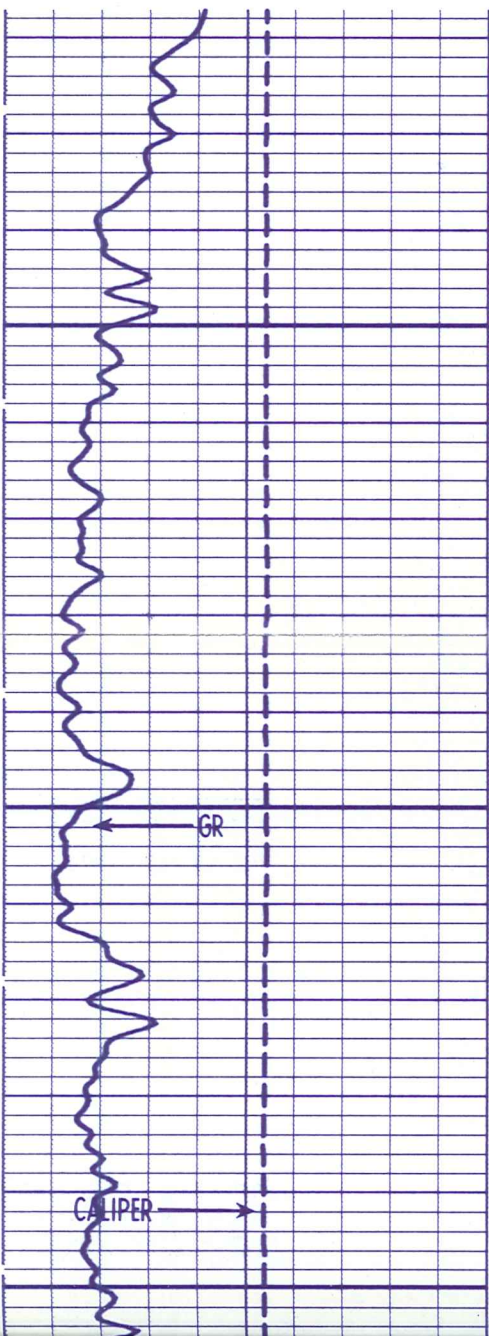
CALI(IN)	
15.00	25.00
GR (GAPI)	
0.0	150.0

RHOB(G/C3)	
2.000	3.000

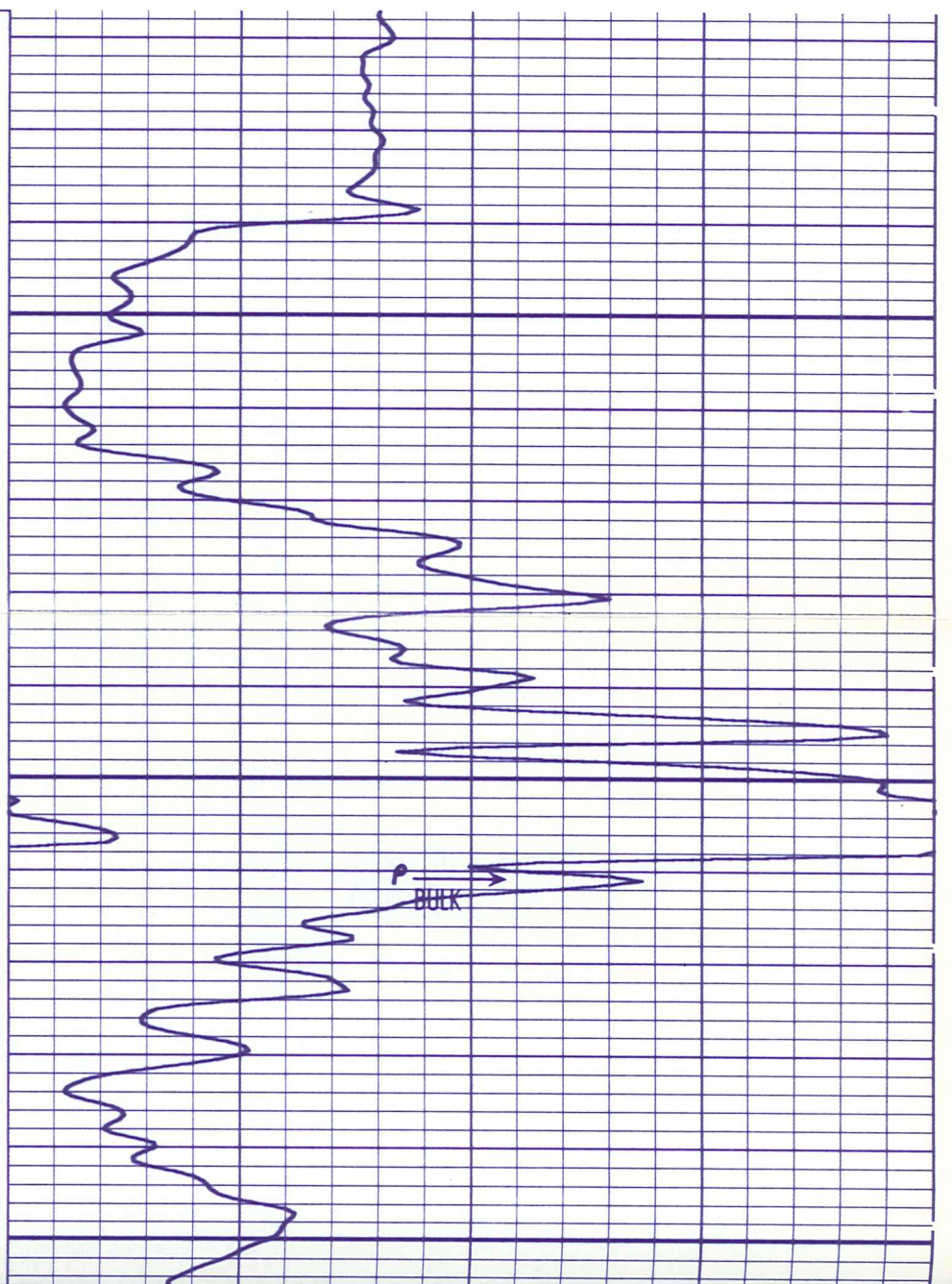
- 16
- 16
- 16
- 16
- 16
- 16

- 14
- 14
- 14
- 14
- 14
- 14

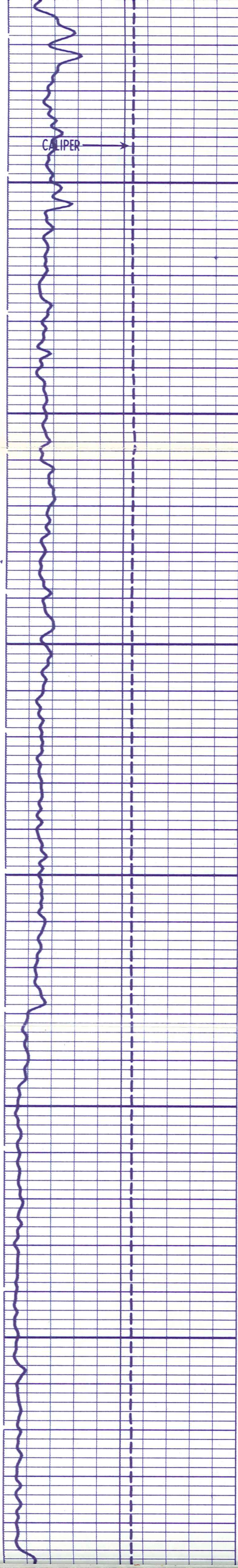
LR



100



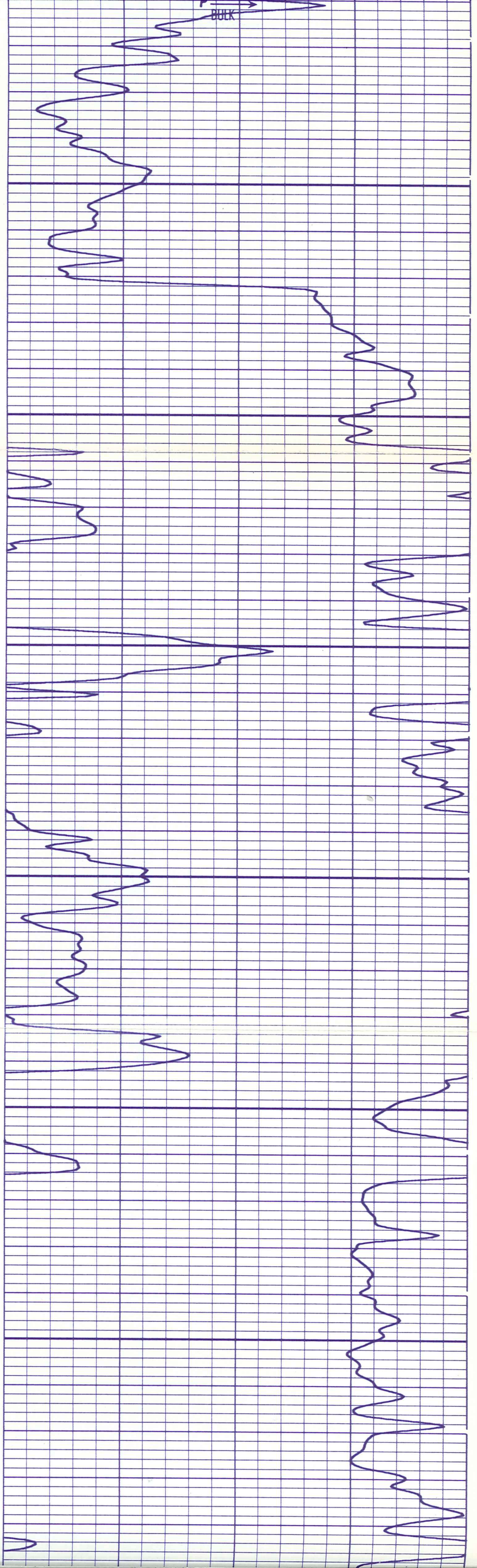
0740244 62-10-9

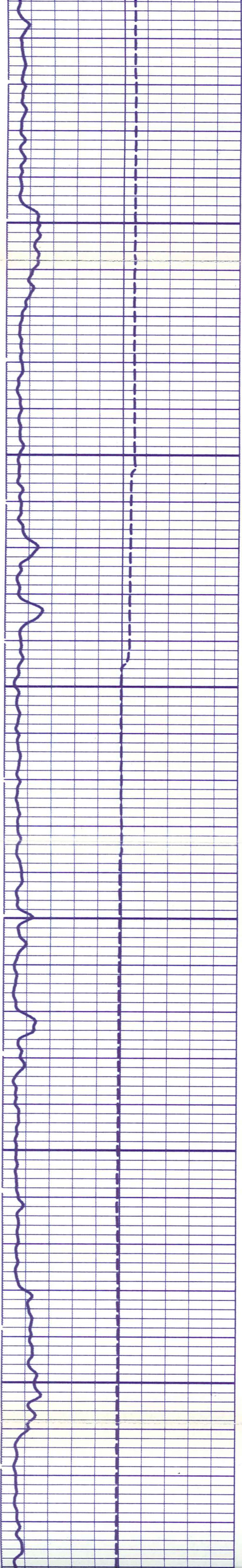


200

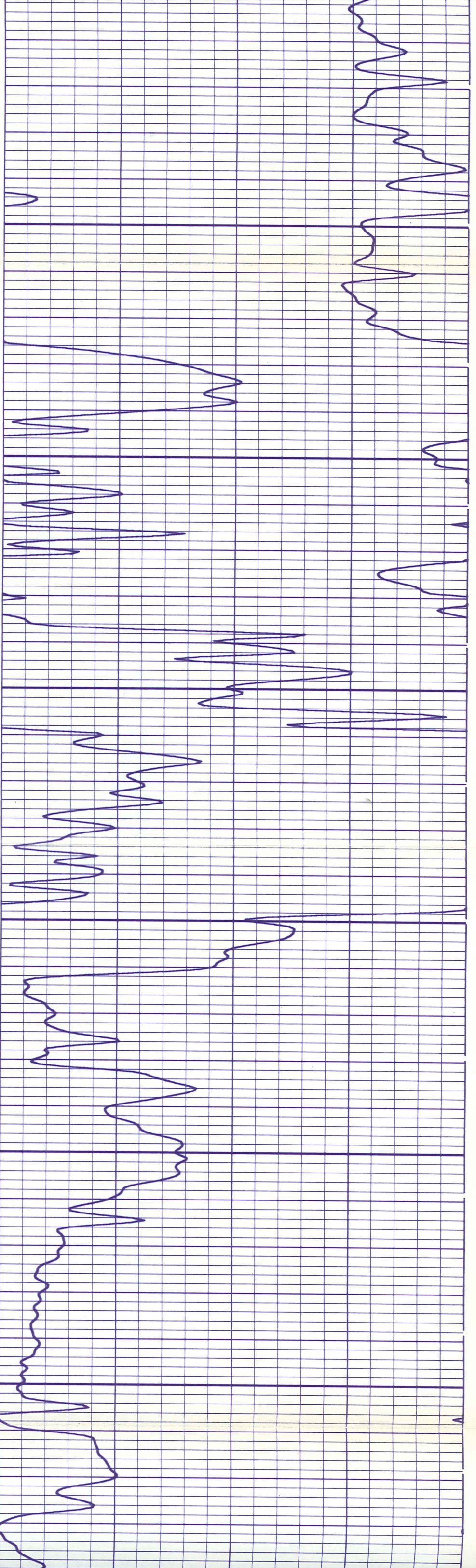
300

400



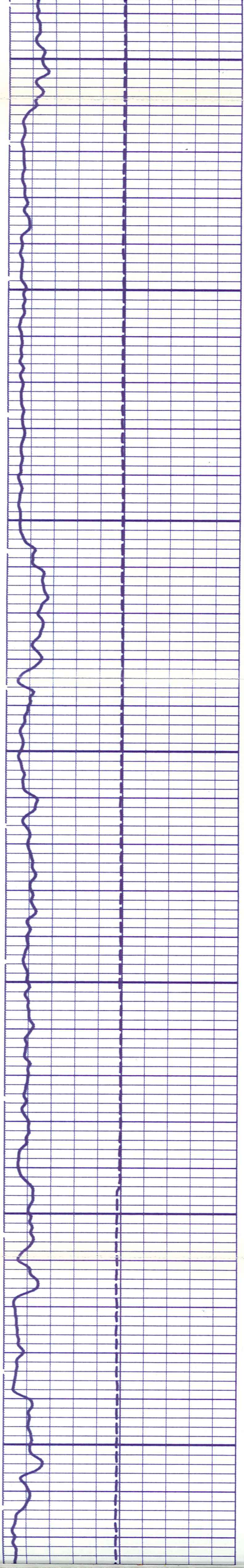


500

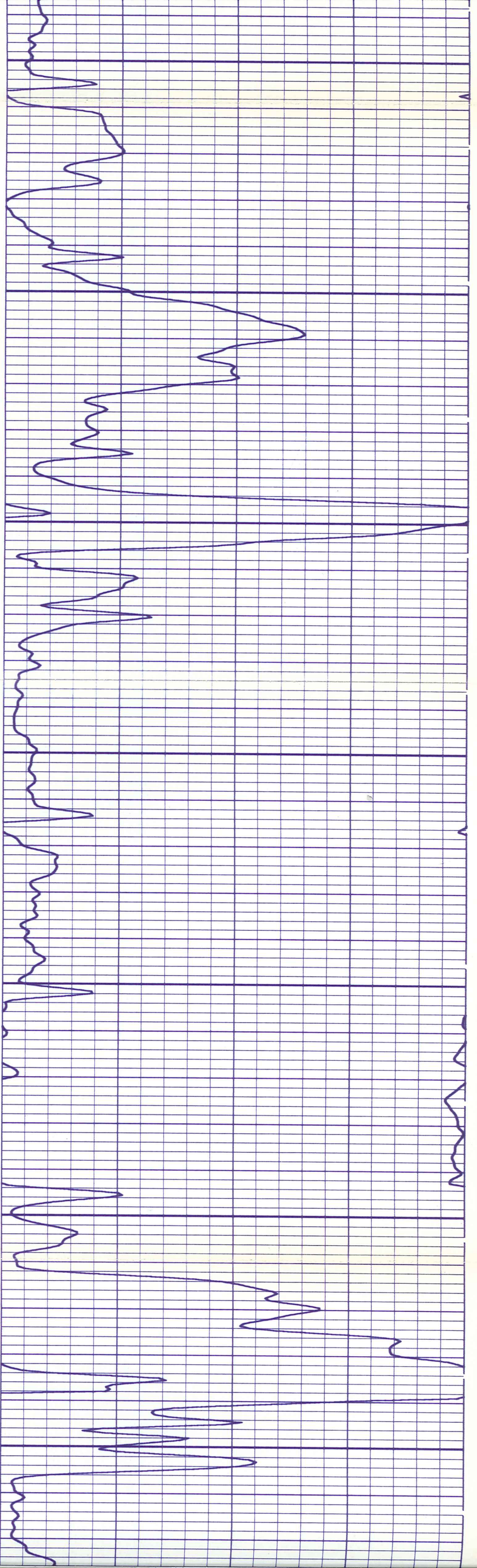


600

700



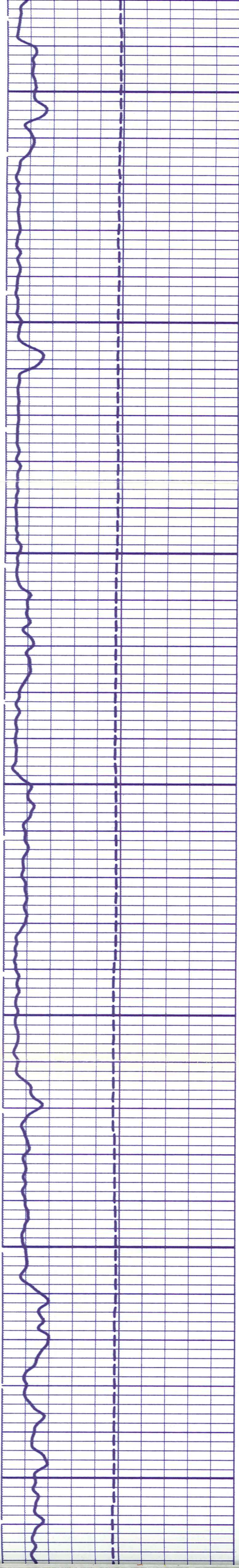
700



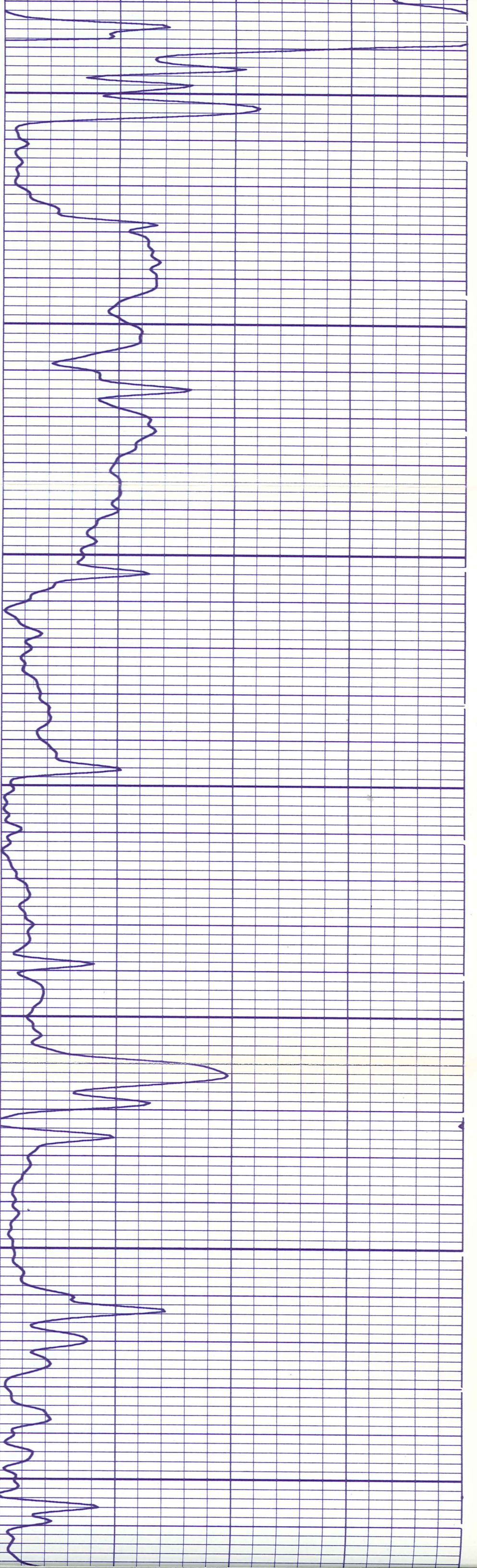
800

900

1000



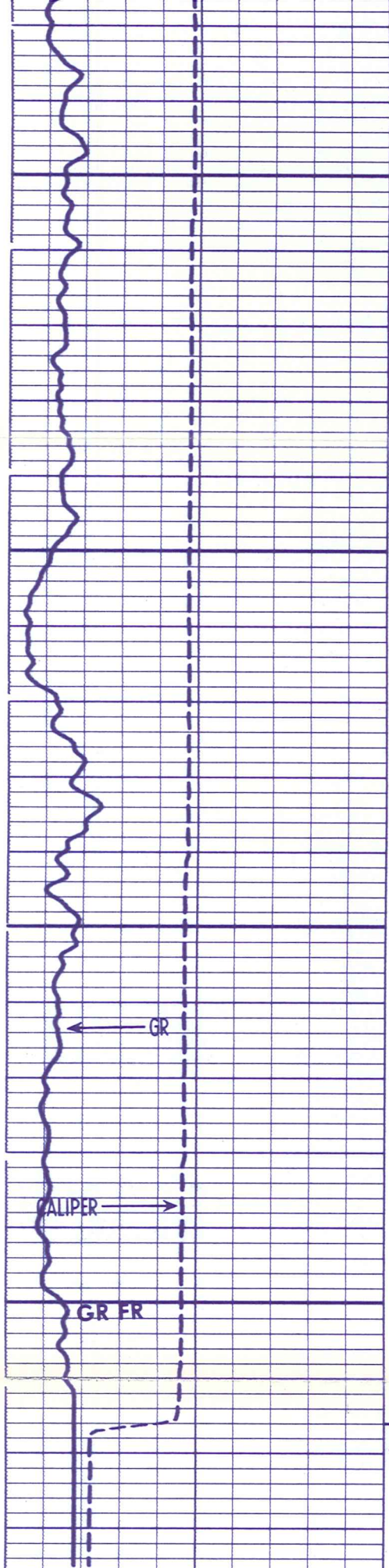
1000



1100

1200

1300



1300

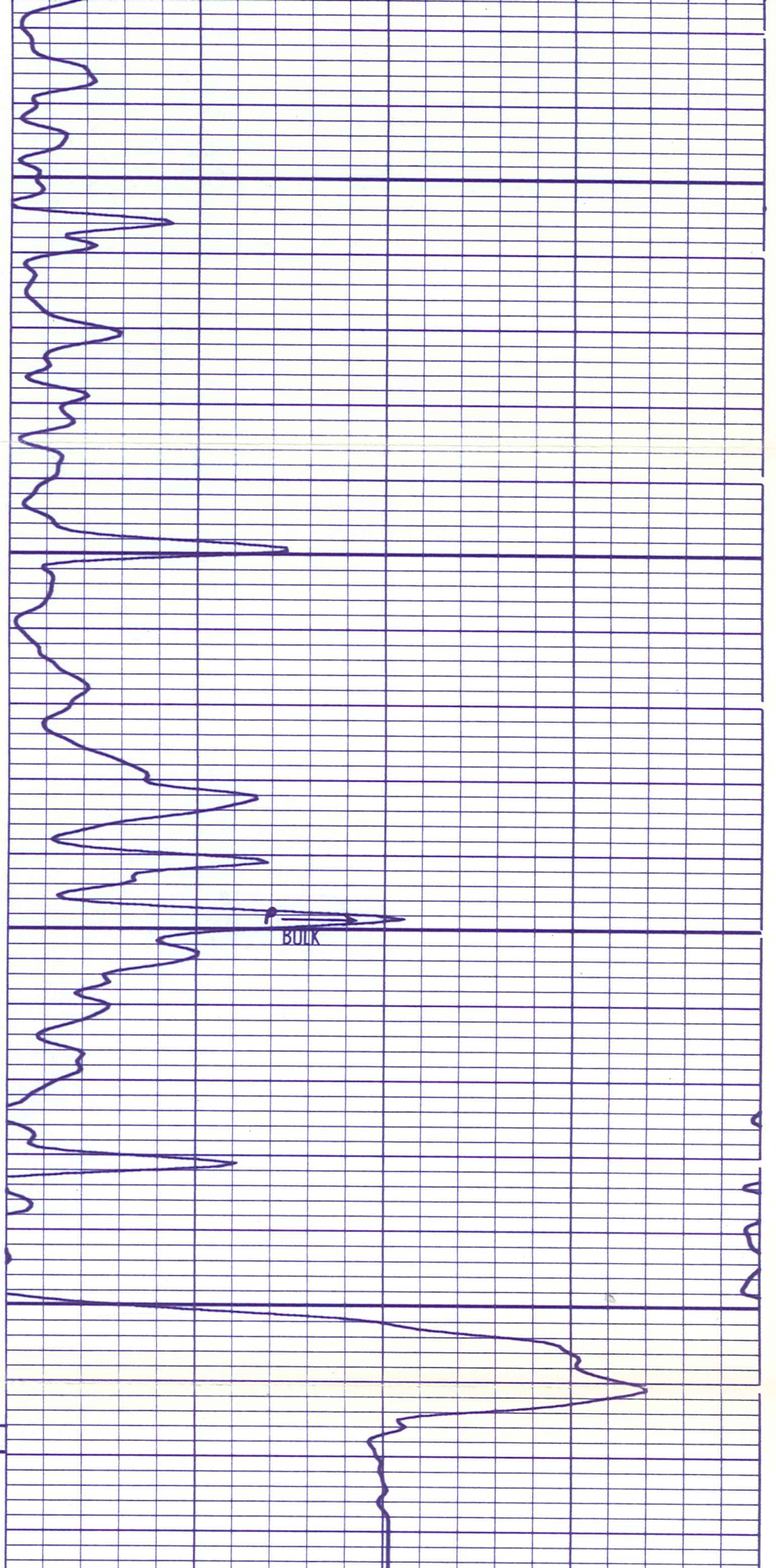
1400

FR

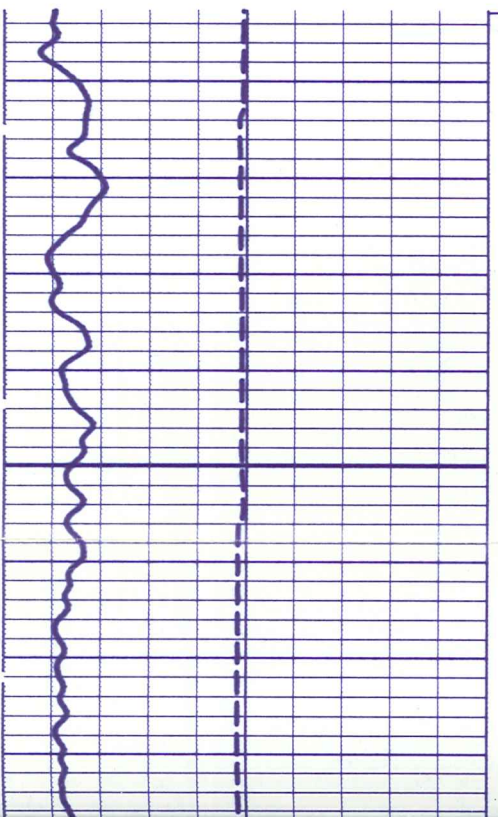
14
14
14
14
14
14

13
13
13
13
13
13

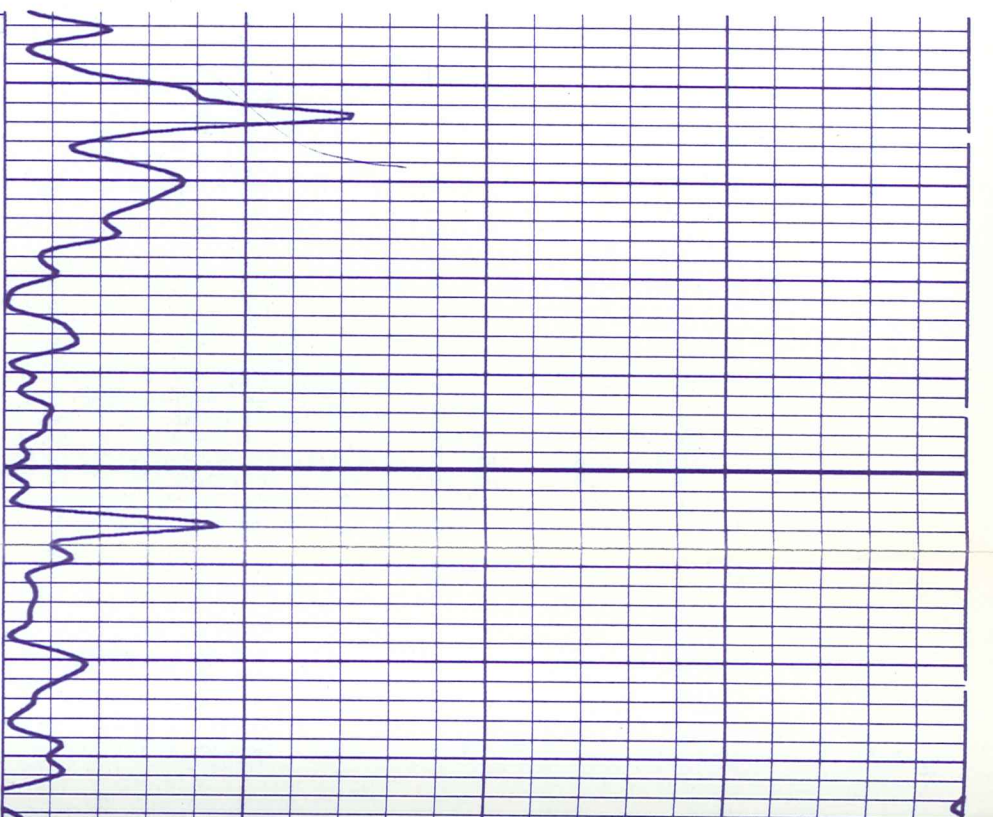
LR

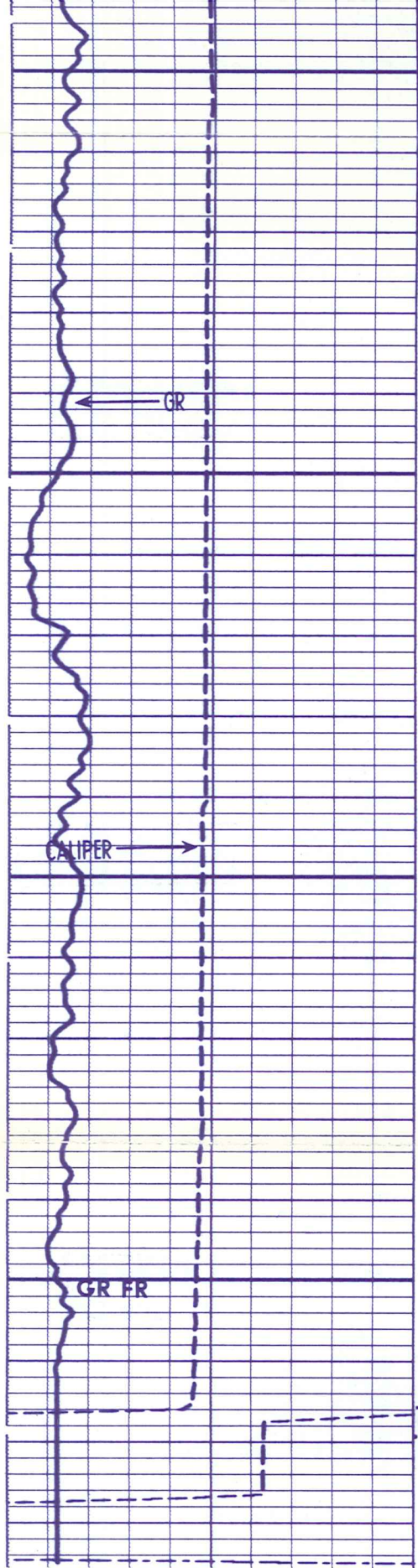


REPEAT SECTION



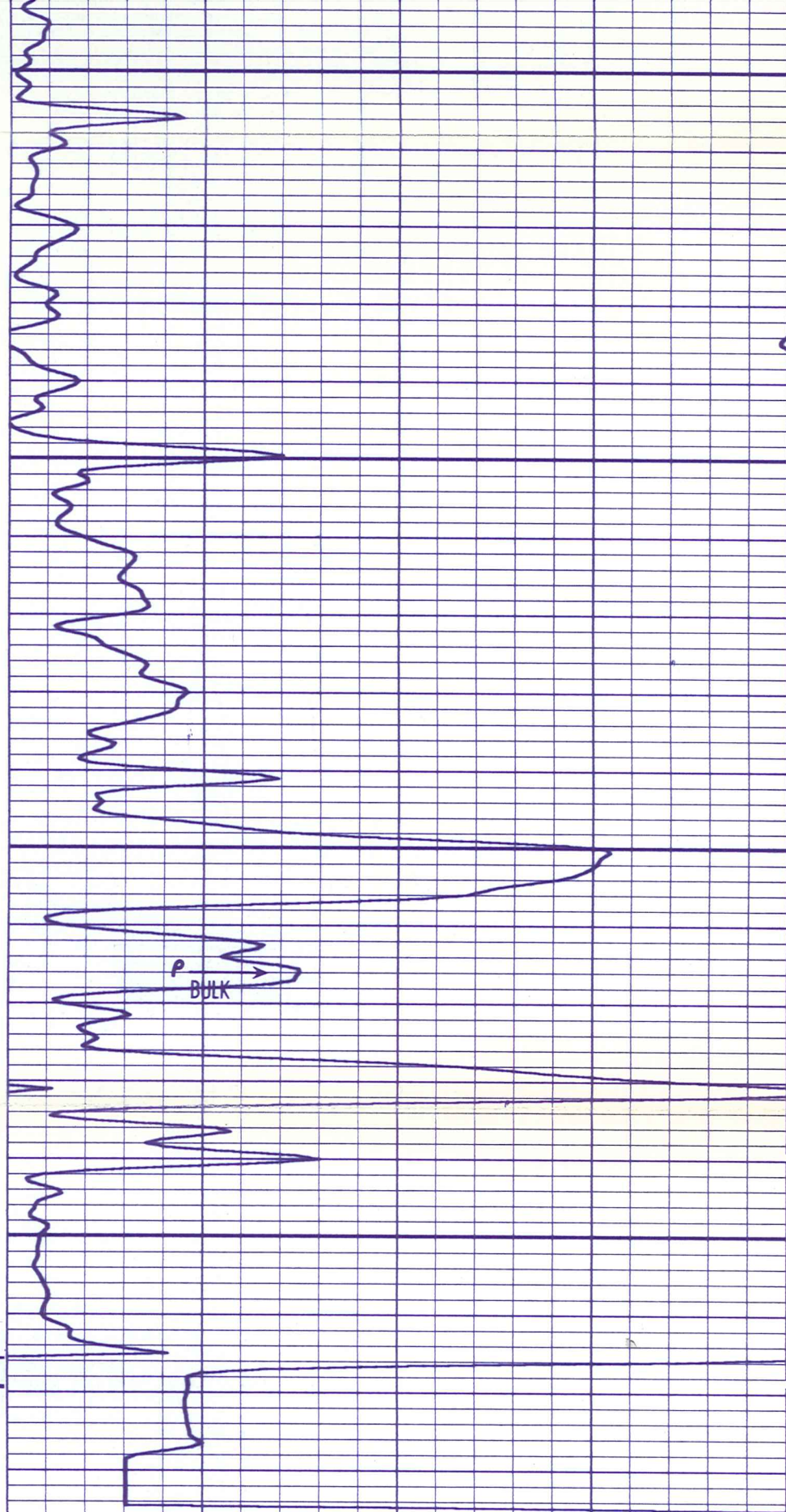
1300



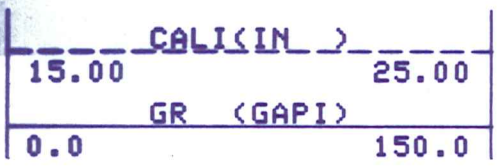


1300

1400



13
13
13
13
13
13
13

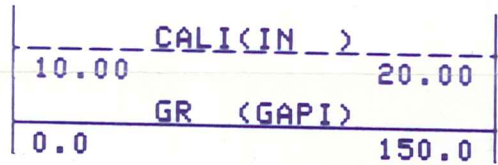


Run 1

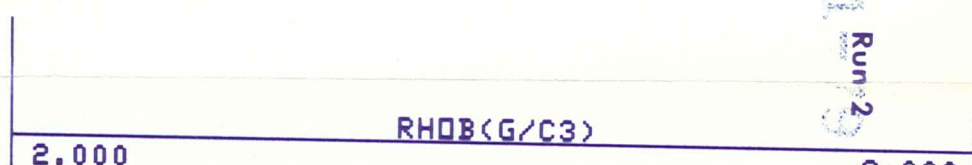


Run 1

11
11
11
21
21
21



Run 2

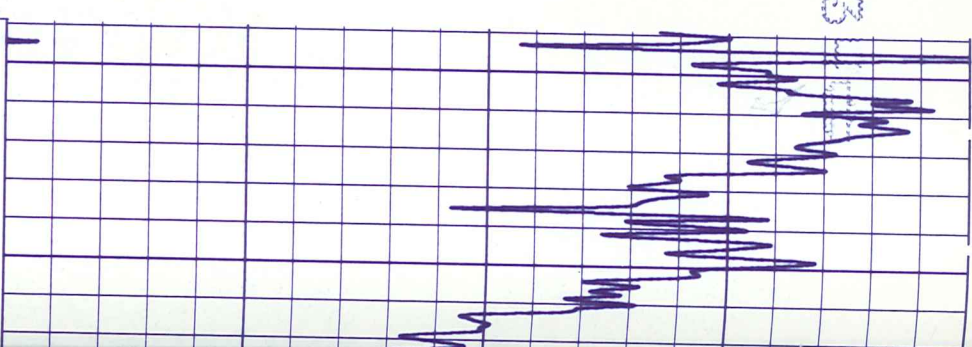
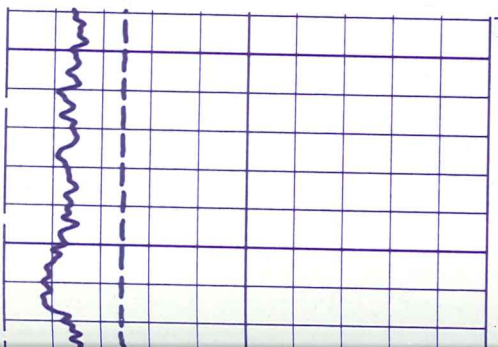


Run 2

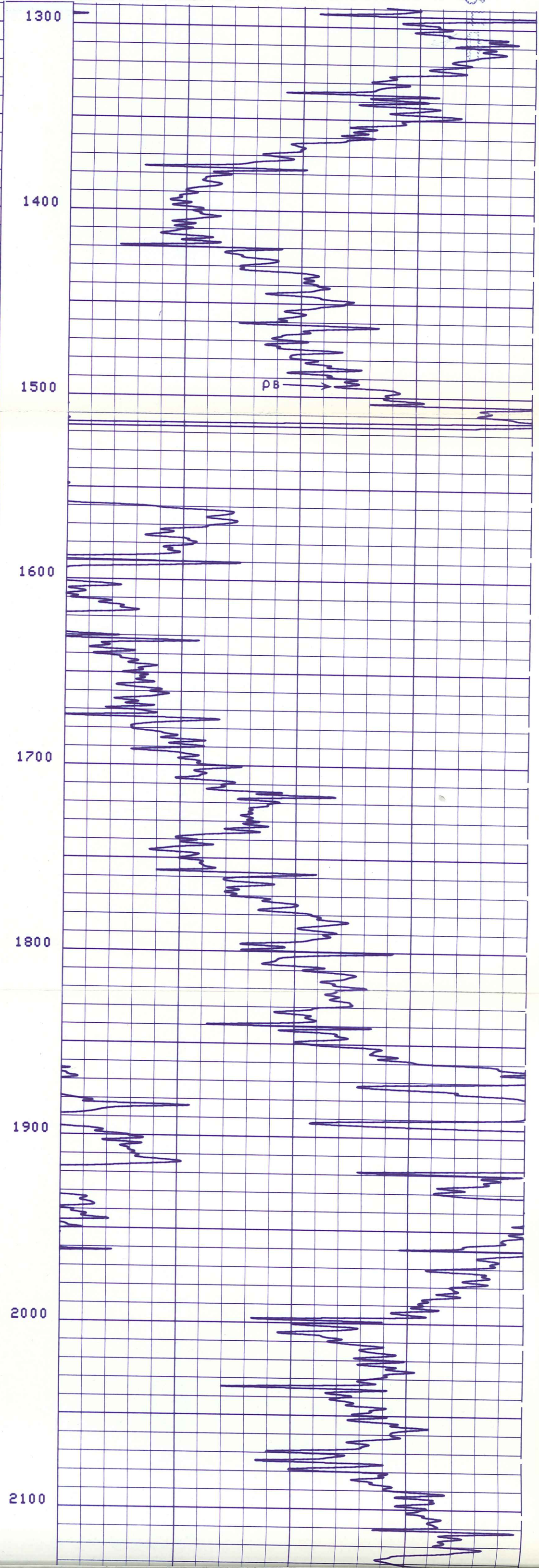
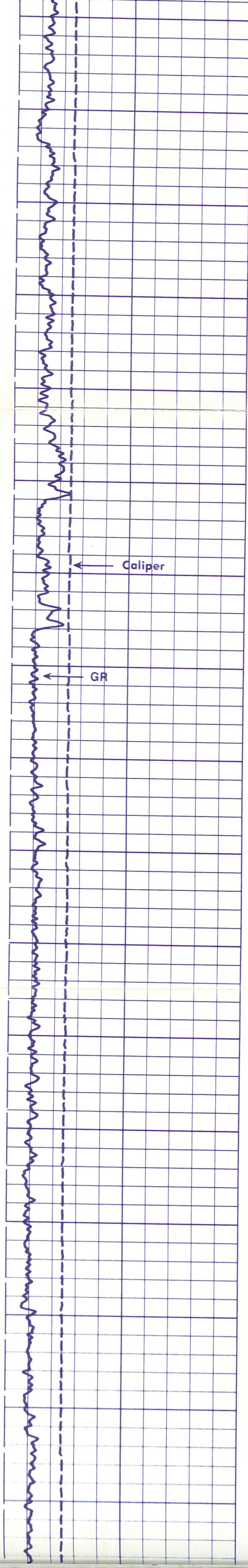
21
21
19
19
19

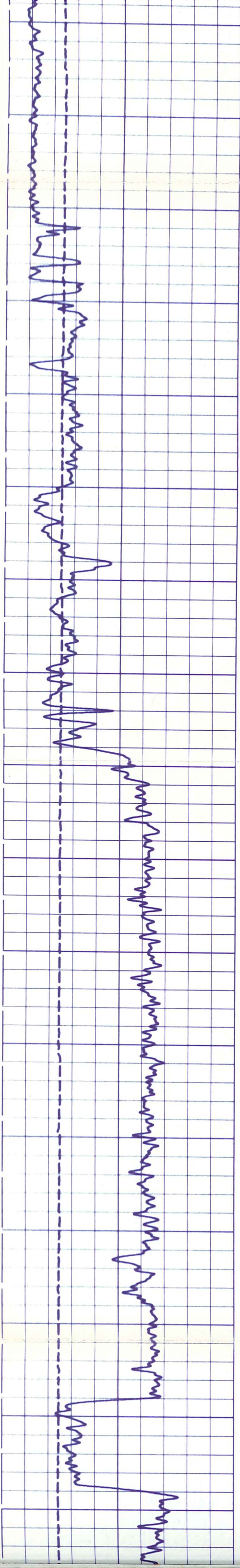
LR

1300



07403





2100

2200

2300

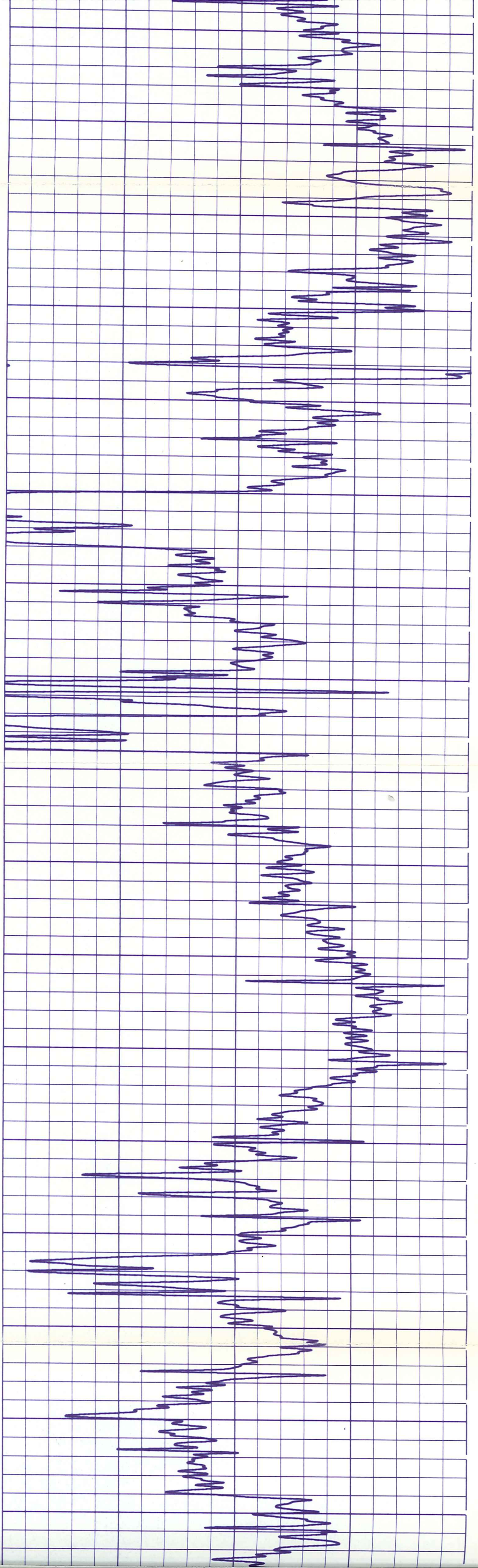
2400

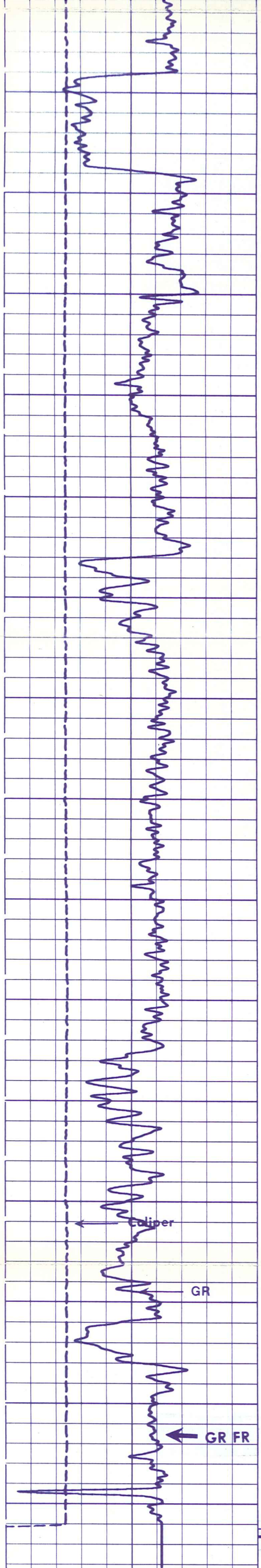
2500

2600

2700

2800





2800

2900

3000

3100

3200

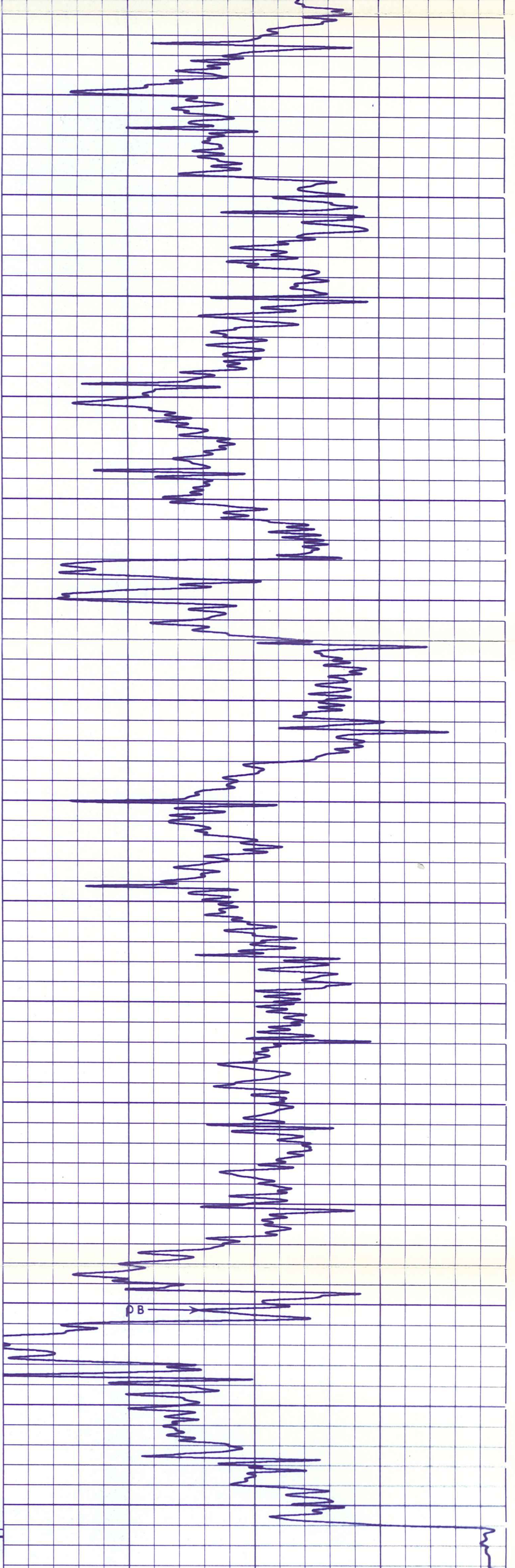
3300

3400

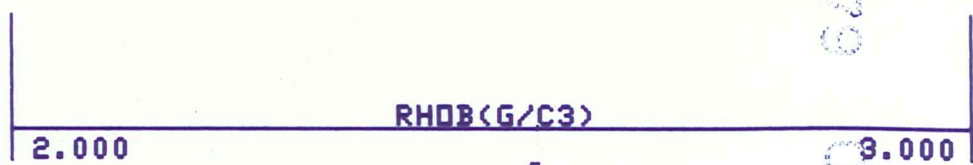
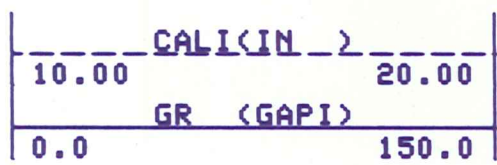
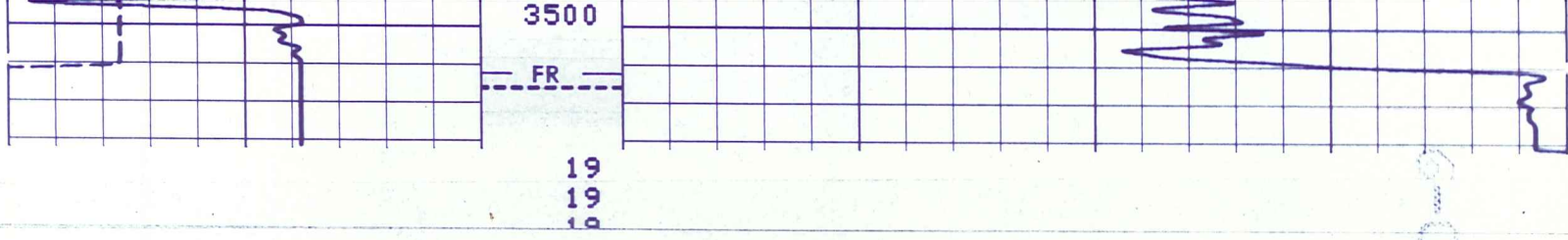
3500

FR

19
19
19

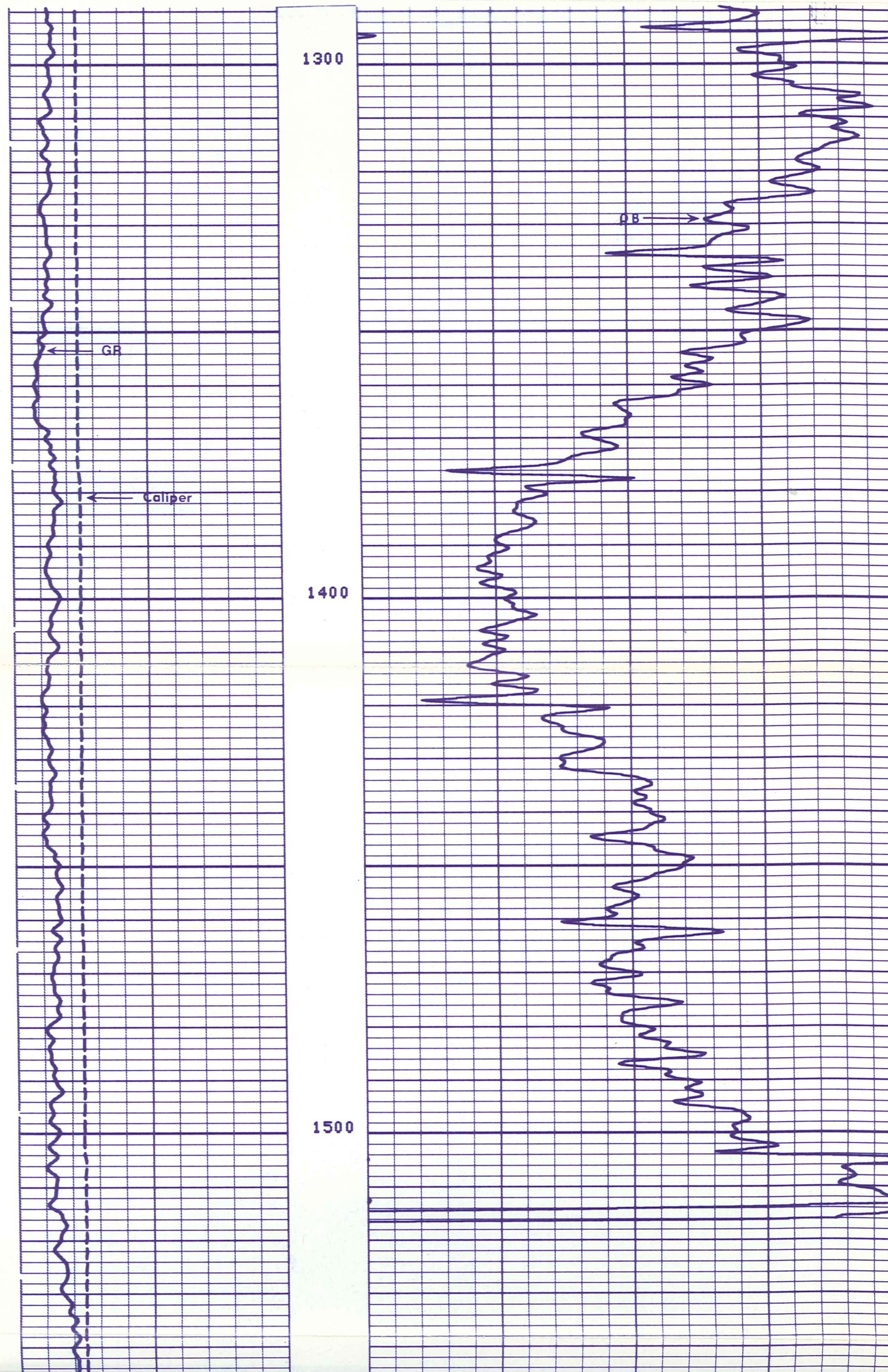


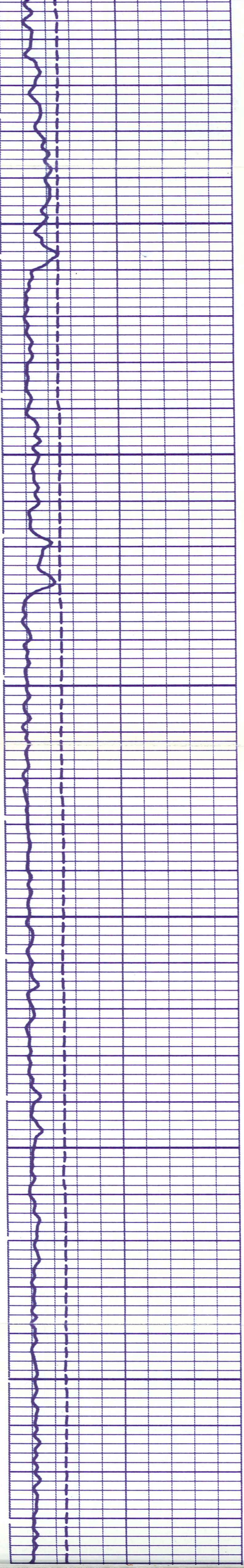
6-01-79



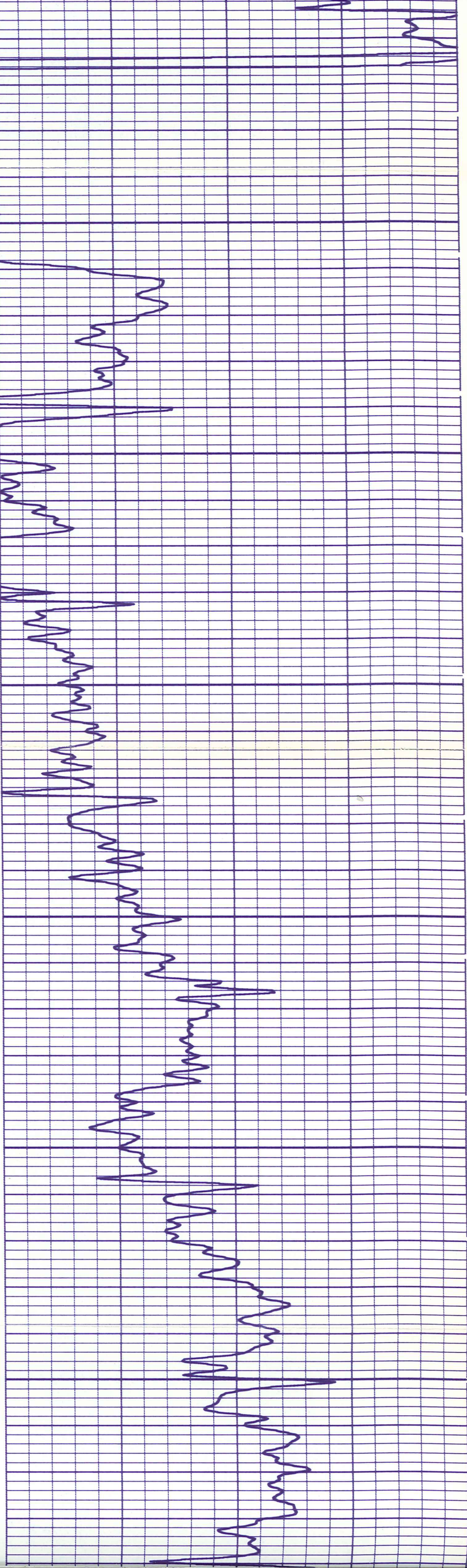
21
21
21
19
19
19
LR

66-10-9
0740344
Ph20h70



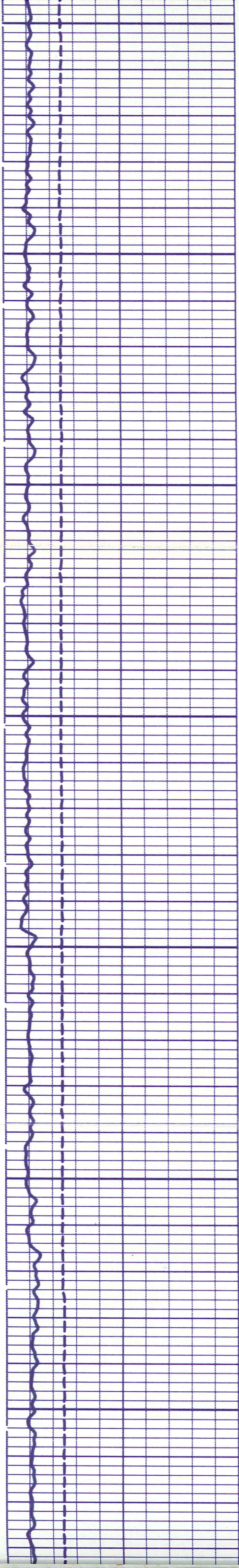


1600



1700

1800

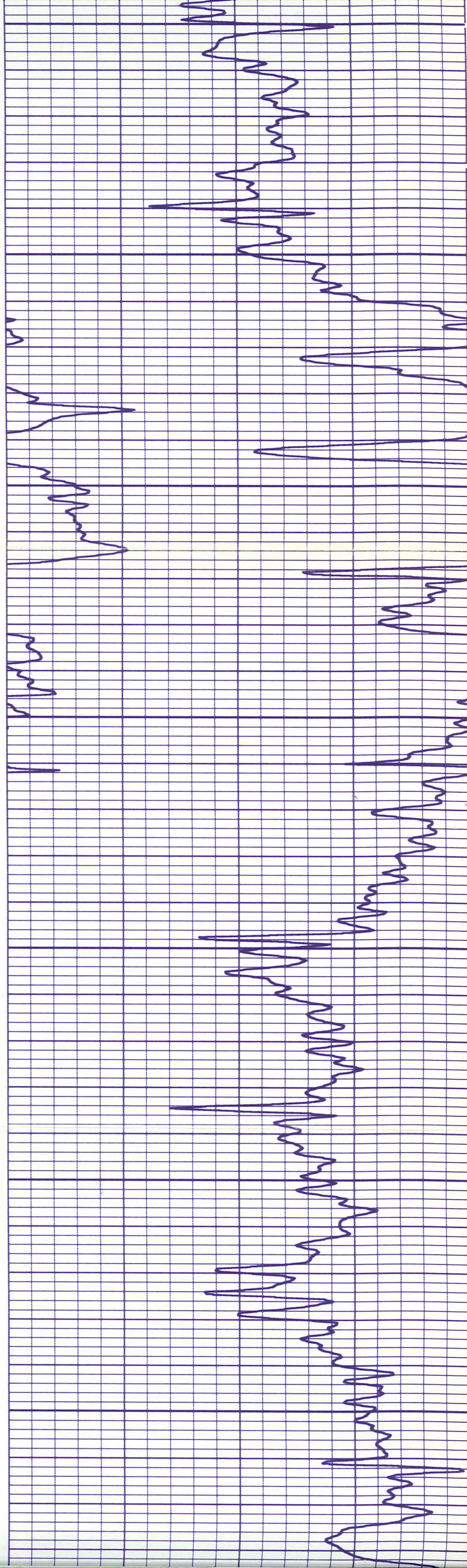


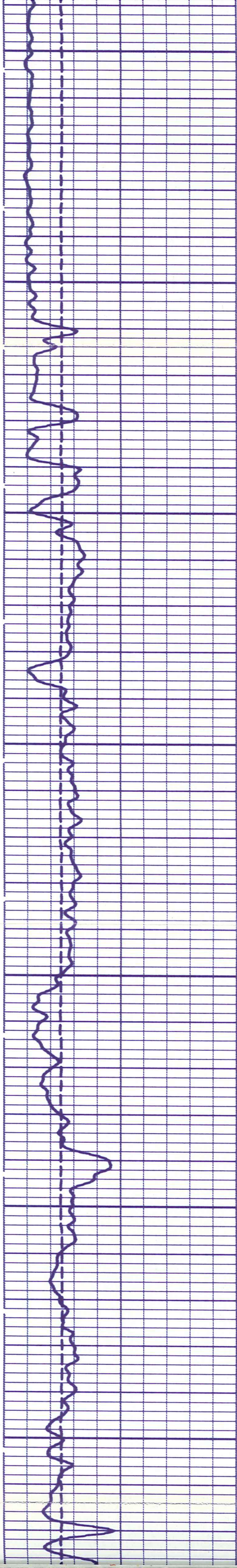
1800

1900

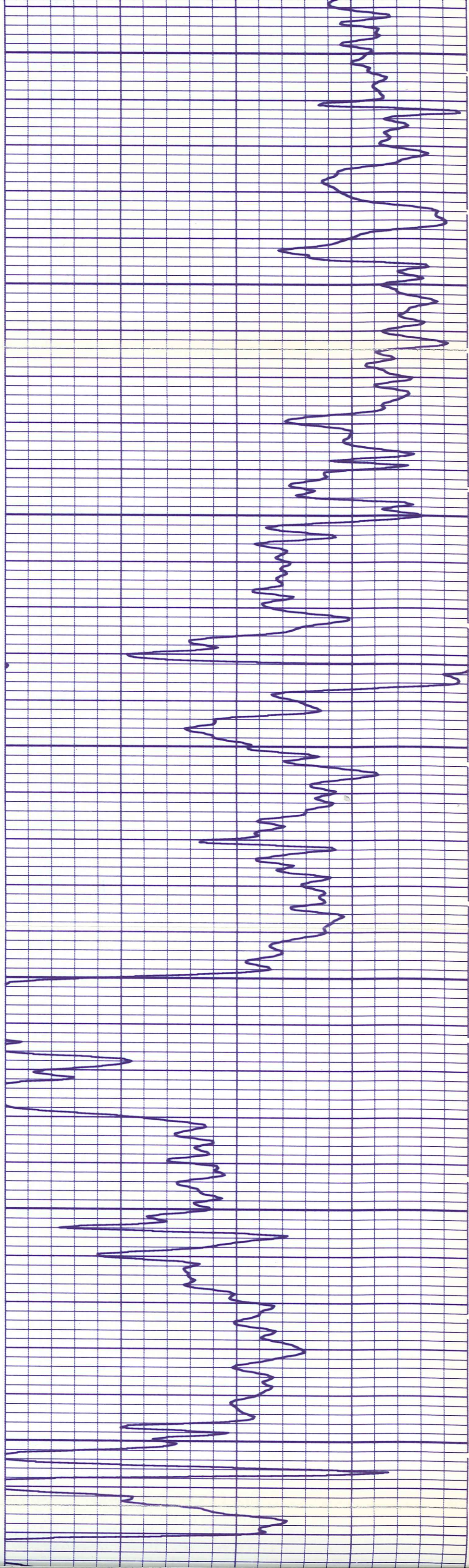
2000

2100





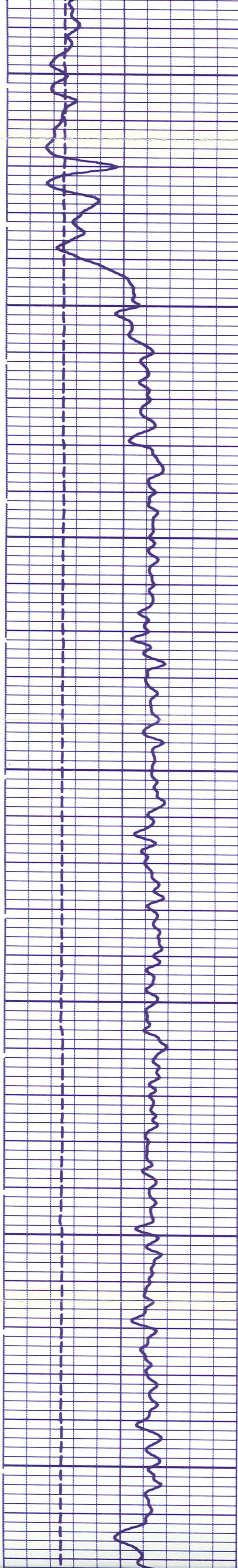
2100



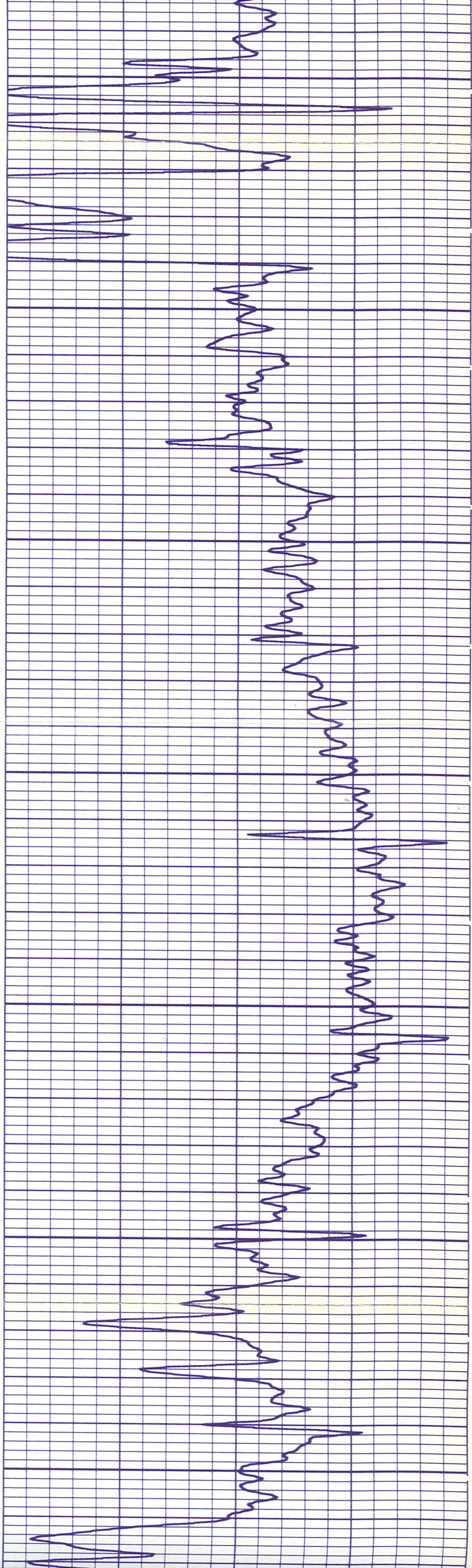
2200

2300

2400



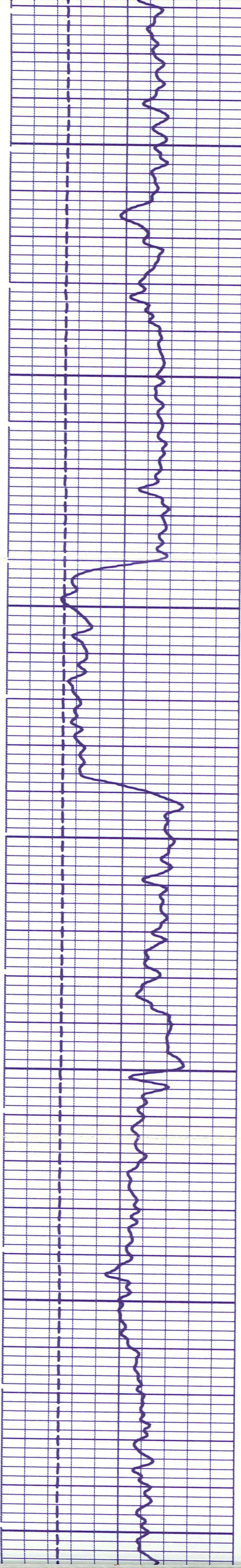
2400



2500

2600

2700

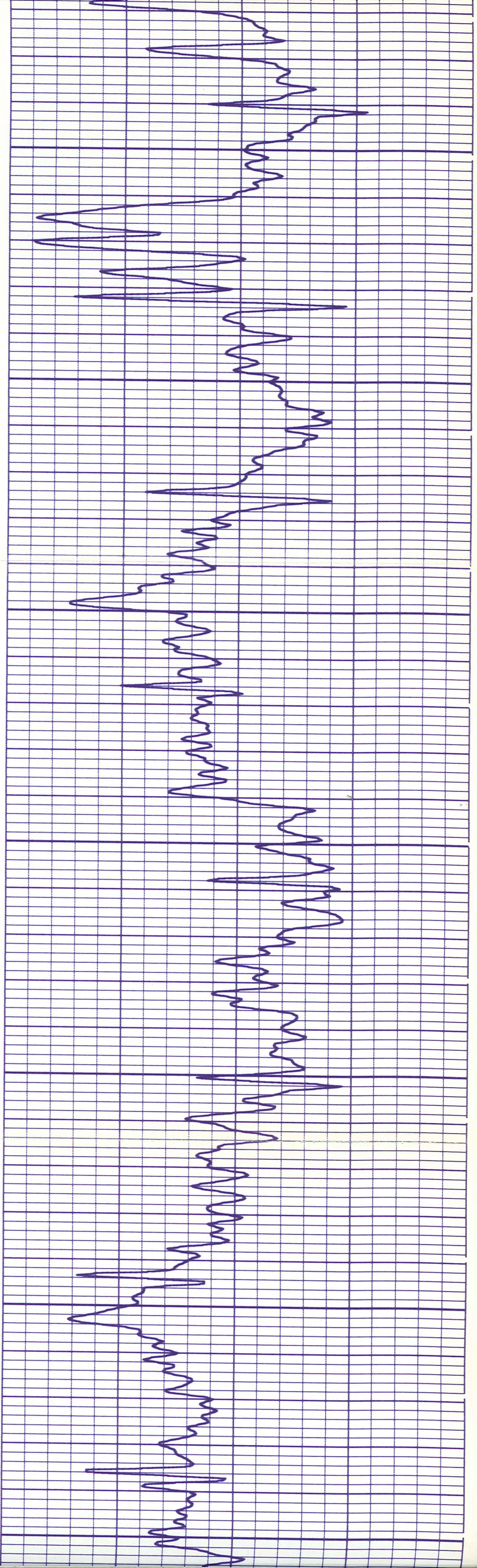


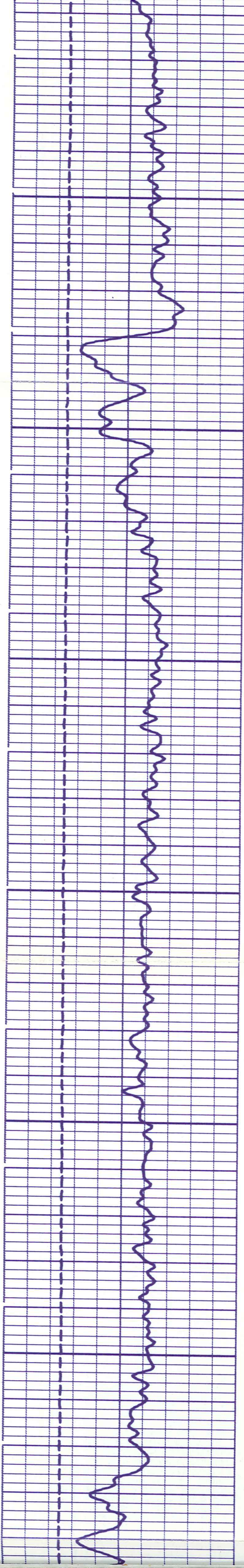
2700

2800

2900

3000

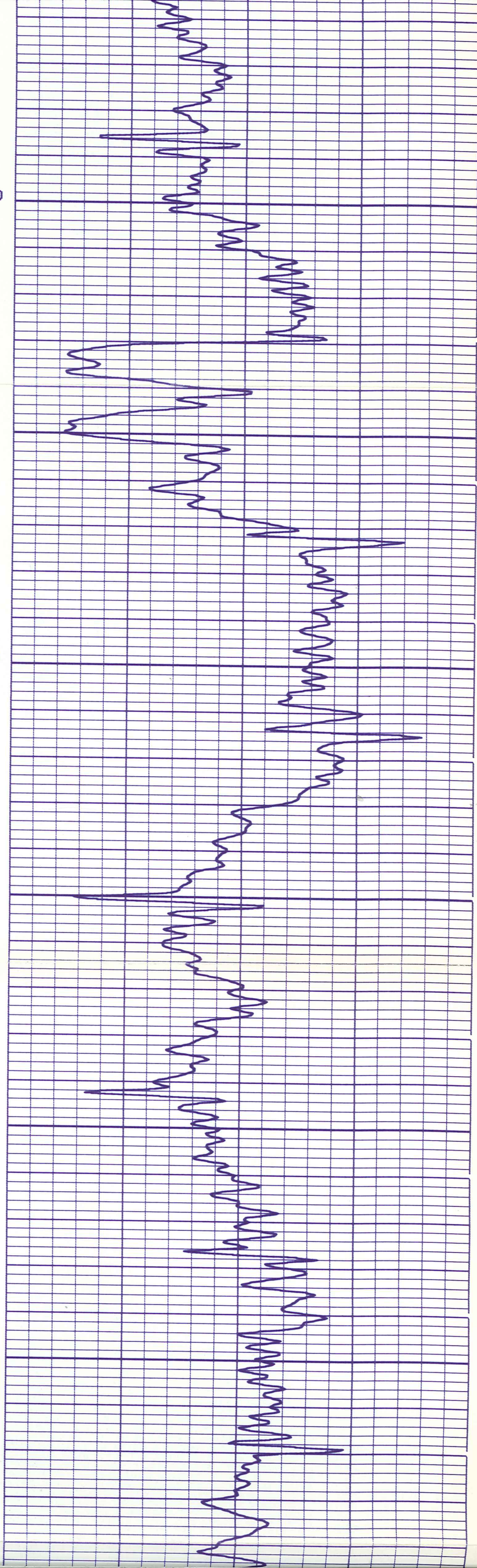


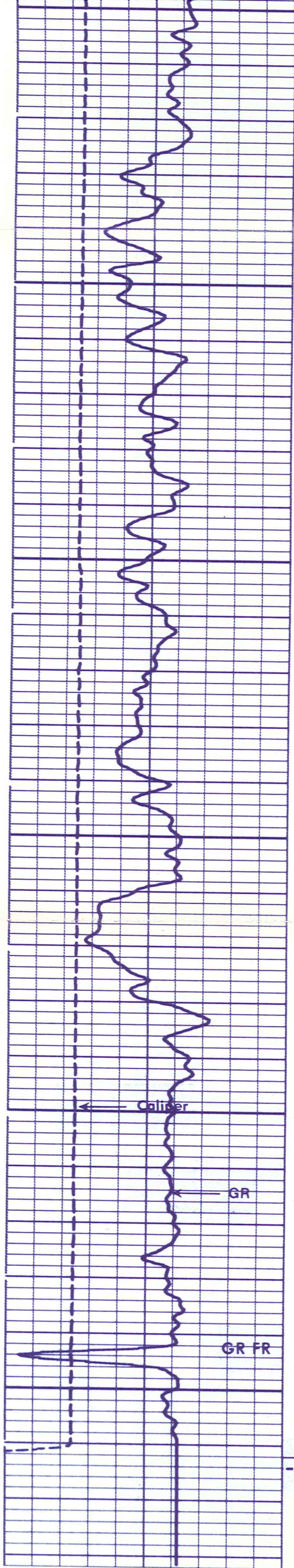


3000

3100

3200





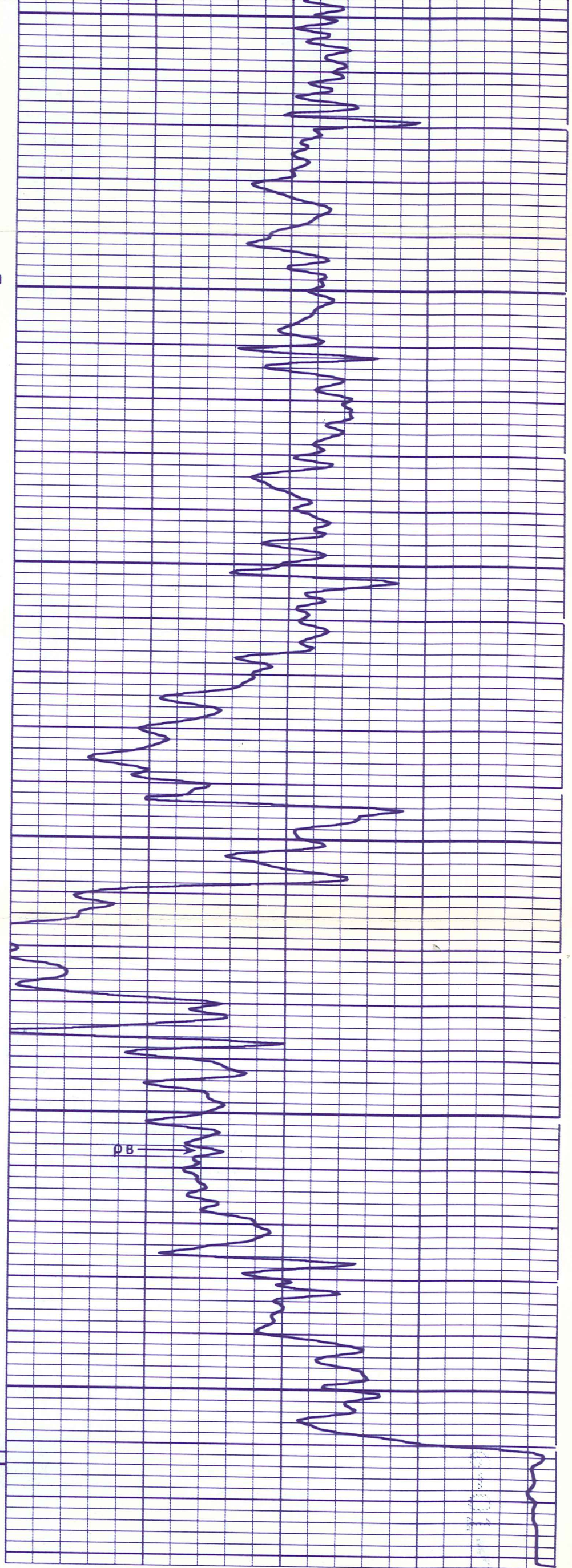
3300

3400

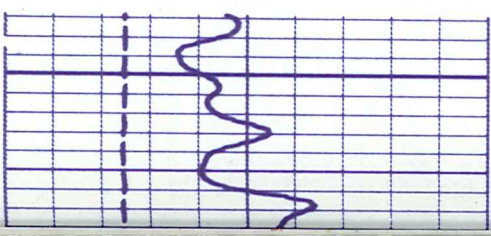
3500

FR

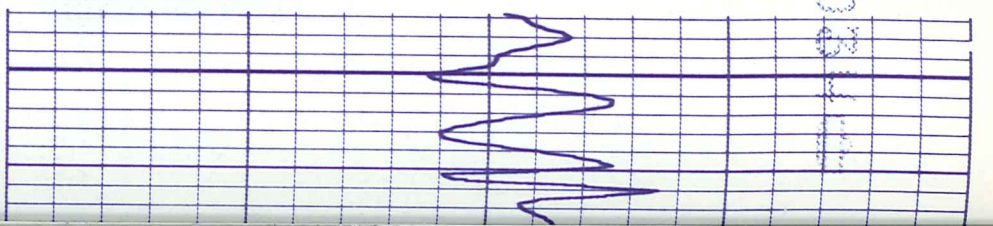
19
19
19
19
17
17
17
17
17



REPEAT SECTION



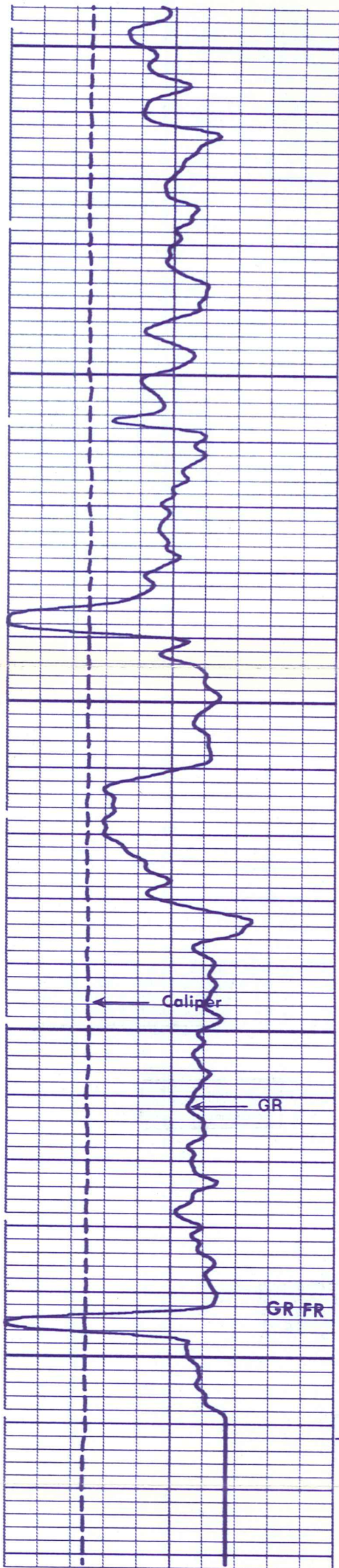
3300



611111 0740244

19
19
17
17
17
17
17

REPEAT SECTION

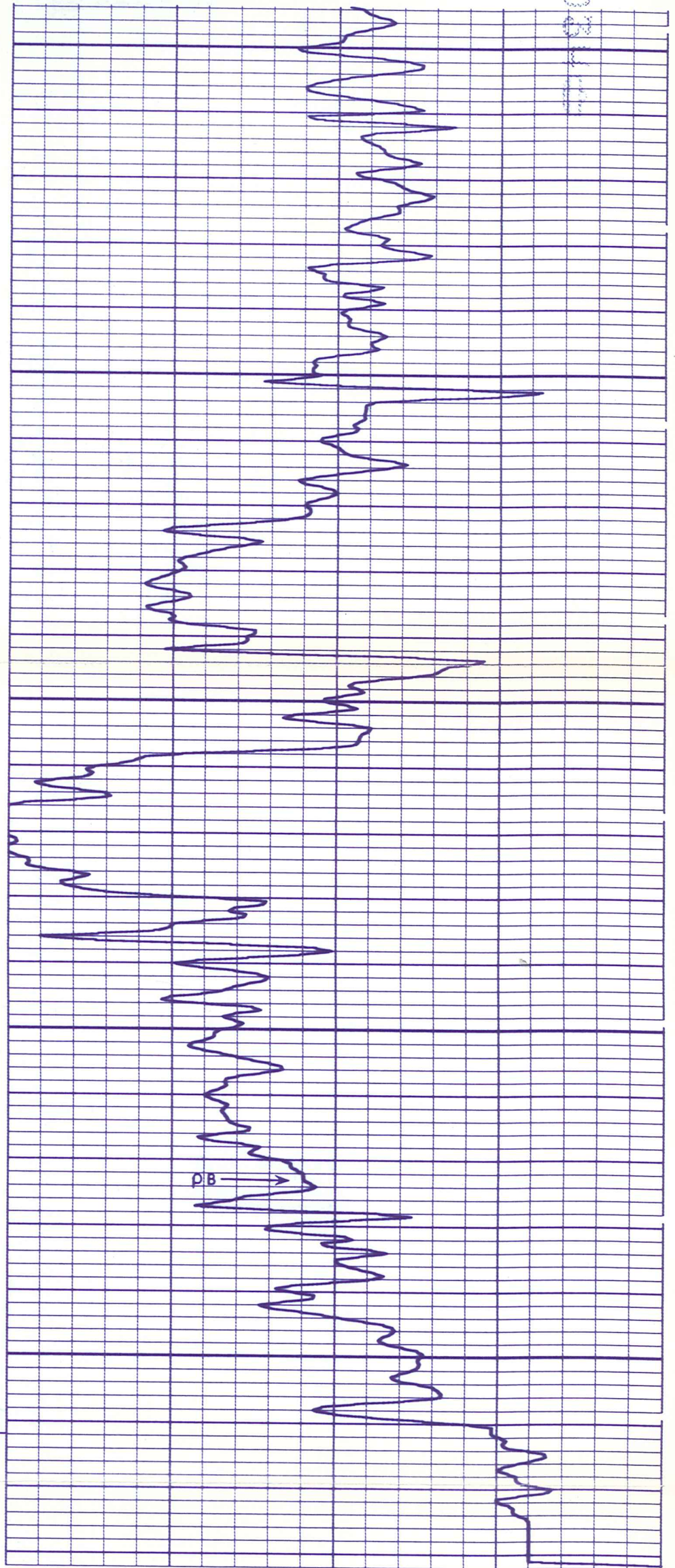


3300

3400

3500

FR



17
17
17
17
17
17

CALI (IN)	
10.00	20.00
GR (GAPI)	
0.0	150.0

RHOB (G/C3)	
2.000	3.000

16
16
16
16
16
16

07403111

6-01-79 0740

10.00	20.00
GR (GAPI)	
0.0	150.0

RHOB(G/C3)	
2.000	3.000

16
16
16
16
16
16

Run 1 BEFORE SURVEY CALIBRATION SUMMARY

PERFORMED: 79/03/10
PROGRAM FILE: NUC (VERSION 12.4A 78/12/ 8)

SGTE DETECTOR CALIBRATION SUMMARY

GR	MEASURED		CALIBRATED	UNITS GAPI
	BKGD	JIG		
	50	217	164	

PGTK DETECTOR CALIBRATION SUMMARY

FFDC NFDC	BLOCK CALIBRATED		JIG		UNITS CPS CPS
			MEASURED	CALIBRATED	
	0		415	336	
	0		690	527	

PGTK CALIPER CALIBRATION SUMMARY

CALI	MEASURED		CALIBRATED		UNITS IN
	SMALL	LARGE	SMALL	LARGE	
	10.3	15.3	12.0	20.0	

11
11
11
11
11
11

Run 1 AFTER SURVEY TOOL CHECK SUMMARY

PERFORMED: 79/03/10
PROGRAM FILE: NUC (VERSION 12.4A 78/12/ 8)

PGTK TOOL CHECK

FFDC NFDC	JIG		UNITS CPS CPS
	BEFORE	AFTER	
	336	334	
	527	529	

10
10
10
10
16890
16890
16890

Run 1 SHOP SUMMARY

PERFORMED: 79/03/02
PROGRAM FILE: SHOP (VERSION 12.4 78/12/ 8)

PGTK DETECTOR CALIBRATION SUMMARY

FFDC NFDC	BLOCK		JIG		UNITS CPS CPS
	MEASURED	CALIBRATED	MEASURED	CALIBRATED	
	396	336	396	337	
	694	527	693	527	

(PGS:82 , PGC:104 , SFT:25)

16890
16890
16890
16890
16890

Run 2 BEFORE SURVEY CALIBRATION SUMMARY

PERFORMED: 79/03/29
PROGRAM FILE: NUC (VERSION 12.4A 78/12/ 8)

6-01-79 074034
6-01-79 074034
6-01-79 074034

Run 2 BEFORE SURVEY CALIBRATION SUMMARY

PERFORMED: 79/03/29
PROGRAM FILE: NUC (VERSION 12.4A 78/12/ 8)

SGTE		DETECTOR CALIBRATION SUMMARY			
GR	MEASURED		CALIBRATED	UNITS	
	BKGD	JIG			GAPI
	44	197	164		

PGTE		DETECTOR CALIBRATION SUMMARY			
FFDC NFDC	BLOCK CALIBRATED		MEASURED	JIG CALIBRATED	UNITS
					CPS CPS
	0		323	336	
	0		579	527	

PGTE		CALIPER CALIBRATION SUMMARY			
CALI	MEASURED		CALIBRATED		UNITS
	SMALL	LARGE	SMALL	LARGE	
	7.2	10.0	8.0	12.0	

16
16
16
16
16
16

Run 2 AFTER SURVEY TOOL CHECK SUMMARY

PERFORMED: 79/03/29
PROGRAM FILE: NUC (VERSION 12.4A 78/12/ 8)

PGTE		TOOL CHECK		
FFDC NFDC		JIG		UNITS
		BEFORE	AFTER	CPS CPS
		336	341	
		527	529	

15
15
15
15

Run 2 SHIP SUMMARY

PERFORMED: 79/01/29
PROGRAM FILE: SHIP (VERSION 12.4 78/12/ 8)

PGTE		DETECTOR CALIBRATION SUMMARY			
FFDC NFDC	BLOCK		JIG		UNITS
	MEASURED	CALIBRATED	MEASURED	CALIBRATED	
	321	336	321	336	
	500	527	500	520	

(PCS:000 , PEC:000 , SPT:000)

20400
20400
20400
20400
20400
20400

PSTE

DETECTOR CALIBRATION SUMMARY

	BLOCK		JIG		UNITS
	MEASURED	CALIBRATED	MEASURED	CALIBRATED	
FFDC	321	336	321	336	CPS
HFDC	300	327	300	320	CPS

(PES:000 , PEC:000 , SFT:000)

20400
 20400
 20400
 20400
 20400
 20400



GL02577
 FILE_CAB_15_DRAWER_1