

Schlumberger

GL02579

UNCOMPENSATED FORMATION
DENSITY AFTER CEMENTING

COUNTY BUTTE
FIELD GEOTHERMAL EXPLOR.
LOCATION T-3N-29E
WELL INEL #1
COMPANY E.G. & G. IDAHO, INC.

COMPANY E.G. & G. IDAHO, INC.
WELL INEL #1
FIELD GEOTHERMAL EXPLORATION
COUNTY BUTTE STATE IDAHO
Other Services: HRT

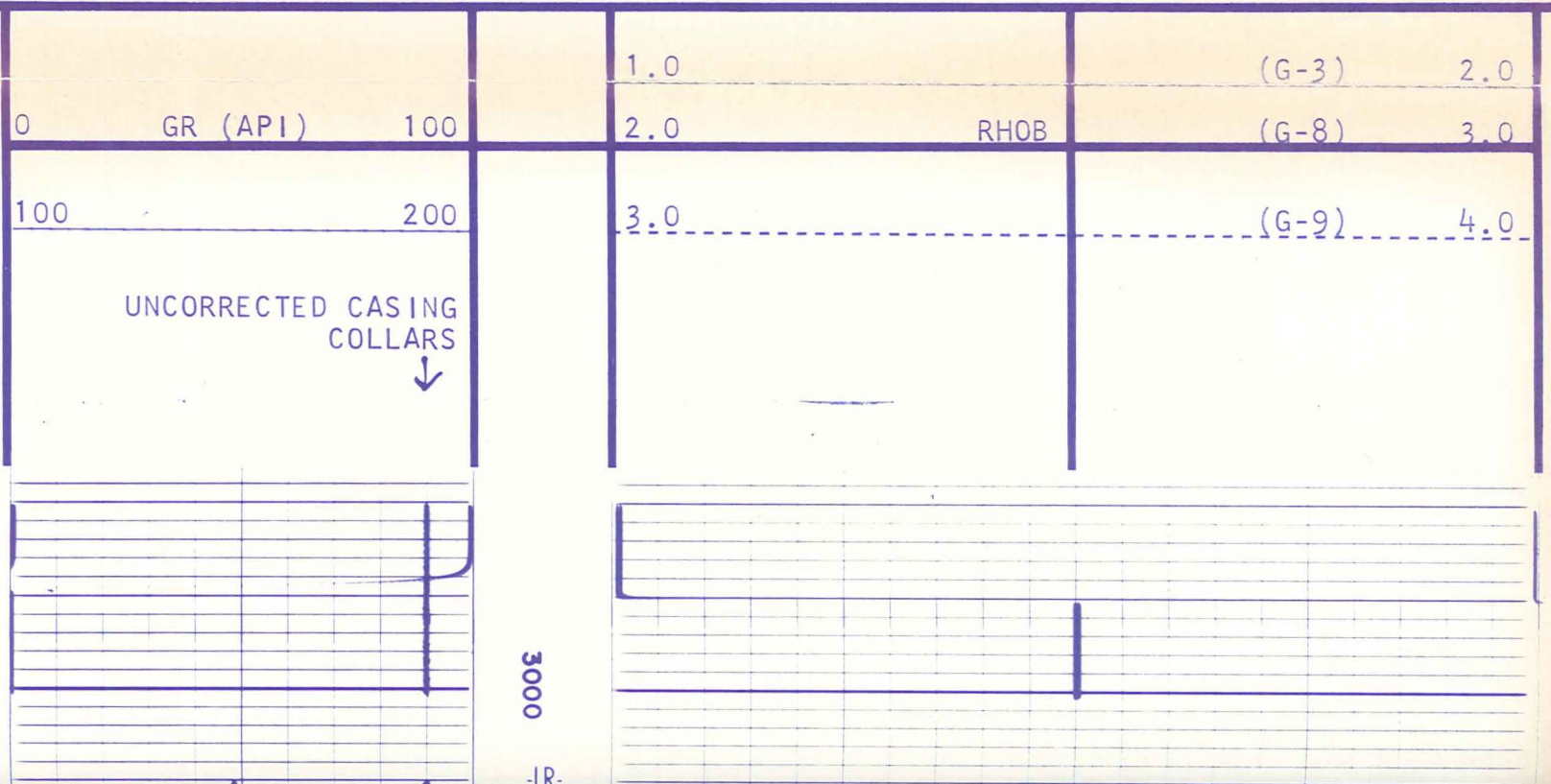
Permanent Datum: GROUND LEVEL; Elev.: 4874.8
Log Measured From: GROUND LEVEL; Ft. Above Perm. Datum
Drilling Measured From: GROUND LEVEL; Elev.: 4895
D.F. 4874.8
G.L. 4874.8

Date	5-24-79			
Run No.	ONE			
Depth-Driller	10,333			
Depth-Logger (Schl.)	N/R			
Btm. Log Interval	7172			
Top Log Interval	3010			
Casing-Driller	978 @ 6796			
Casing-Logger	6801			
Bit Size	12 1/4"			
Type Fluid in Hole	WATER			
Dens. Visc.				
pH				
Fluid Loss				
Source of Sample				
Rm @ Meas. Temp.	@	@	@	@
Rmf @ Meas. Temp.	@	@	@	@
Rmc @ Meas. Temp.	@	@	@	@
Source: Rmf Rmc				
Rm @ BHT	@	@	@	@
Circulation Stopped	N/A			
Logger on Bottom	12:00 5-24			
Max. Rec. Temp.	N/R			
Equip. Location	5766 EVSTN			
Recorded By	R.A. CHRISTENSEN			
Witnessed By Mr.	JOE FIORE			

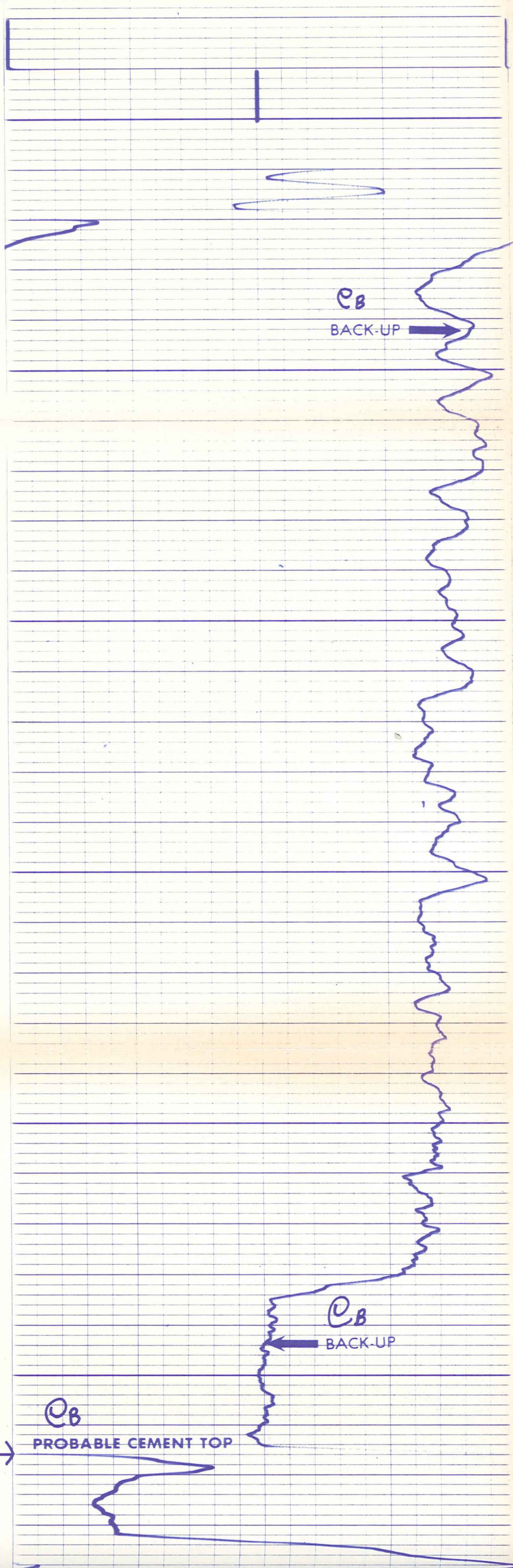
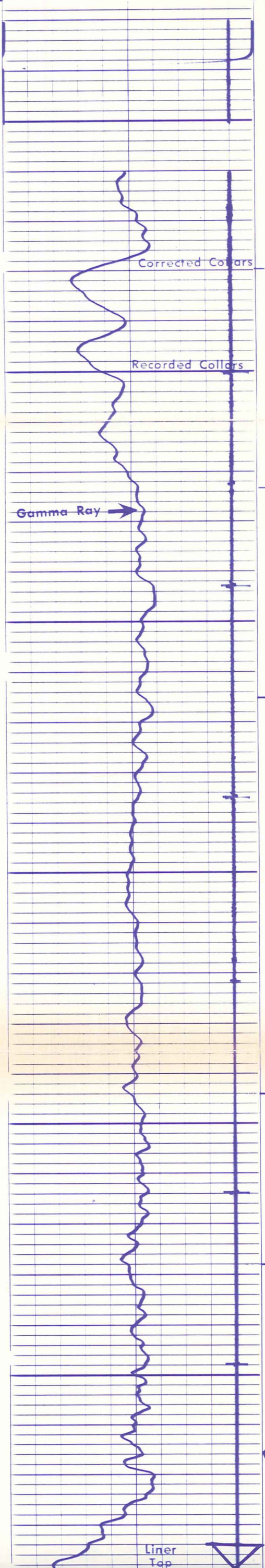
FOLD HERE The well name, location and borehole reference data were furnished by the customer.

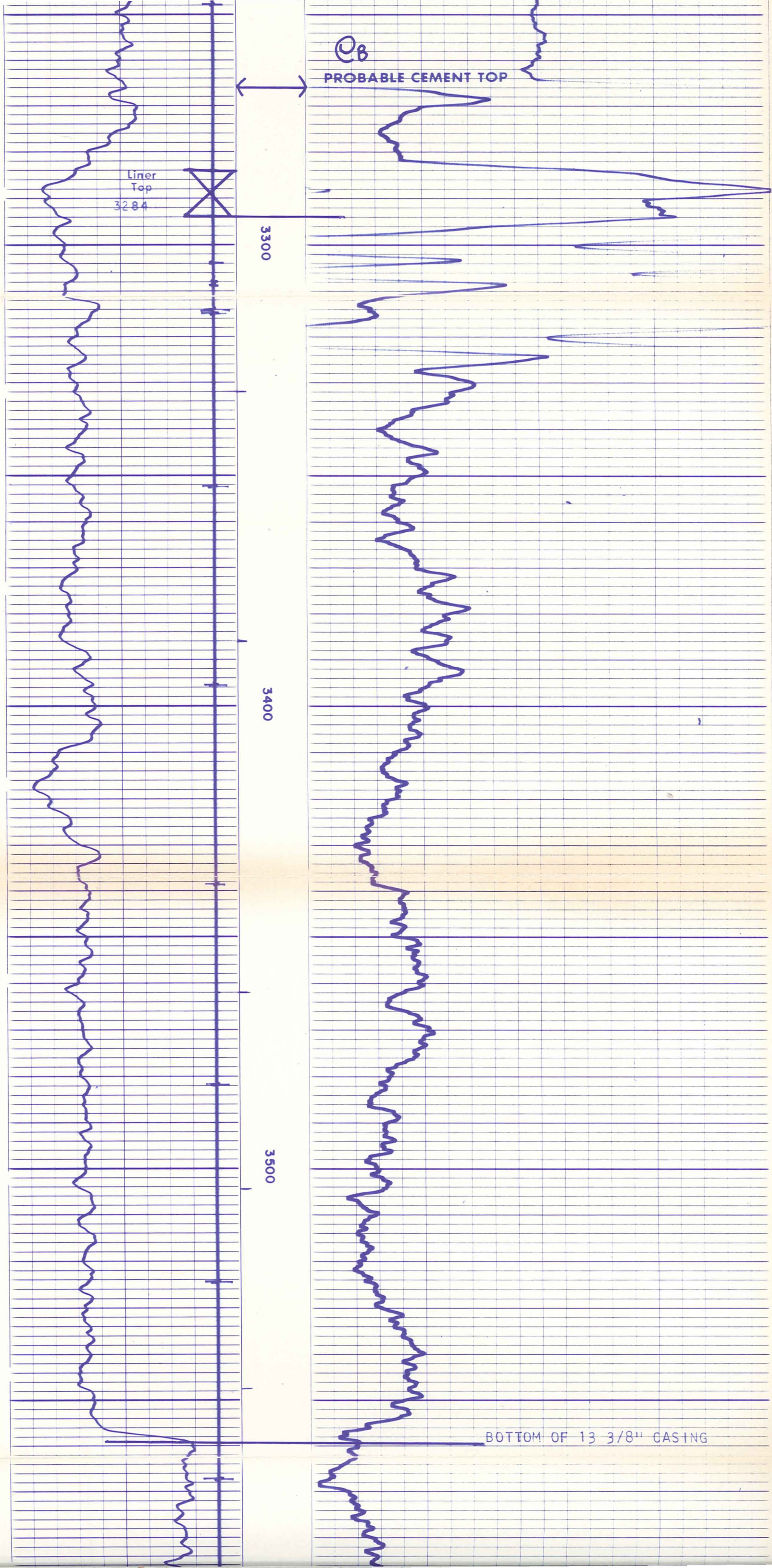
Run No.	ONE	SCALE CHANGES		
Service Order No.	66012	Type Log	Depth	Scale Up Hole
API Serial No.	1			
Fluid Level	1			
EQUIPMENT DATA		REMARKS:		
PGP EJ	1049	B SCALES ARE APPROX.		
PGC EB	664			
PGS EC	184			
GSR B	3219			
CALIBRATION DATA				
Speed - F.P.M.	30			
GR	BKG. CPS 67			
	Source CPS 271			
	Tc 2			

All interpretations are opinions based on inferences from electrical or other measurements and we cannot, and do not guarantee the accuracy or correctness of any interpretations, and we shall not, except in the case of gross or willful negligence on our part, be liable or responsible for any loss, costs, damages or expenses incurred or sustained by anyone resulting from any interpretation made by any of our officers, agents or employees. These interpretations are also subject to Clause 4 of our General Terms and Conditions as set out in our current Price Schedule.



UNCORRECTED CASING COLLARS





CB
PROBABLE CEMENT TOP

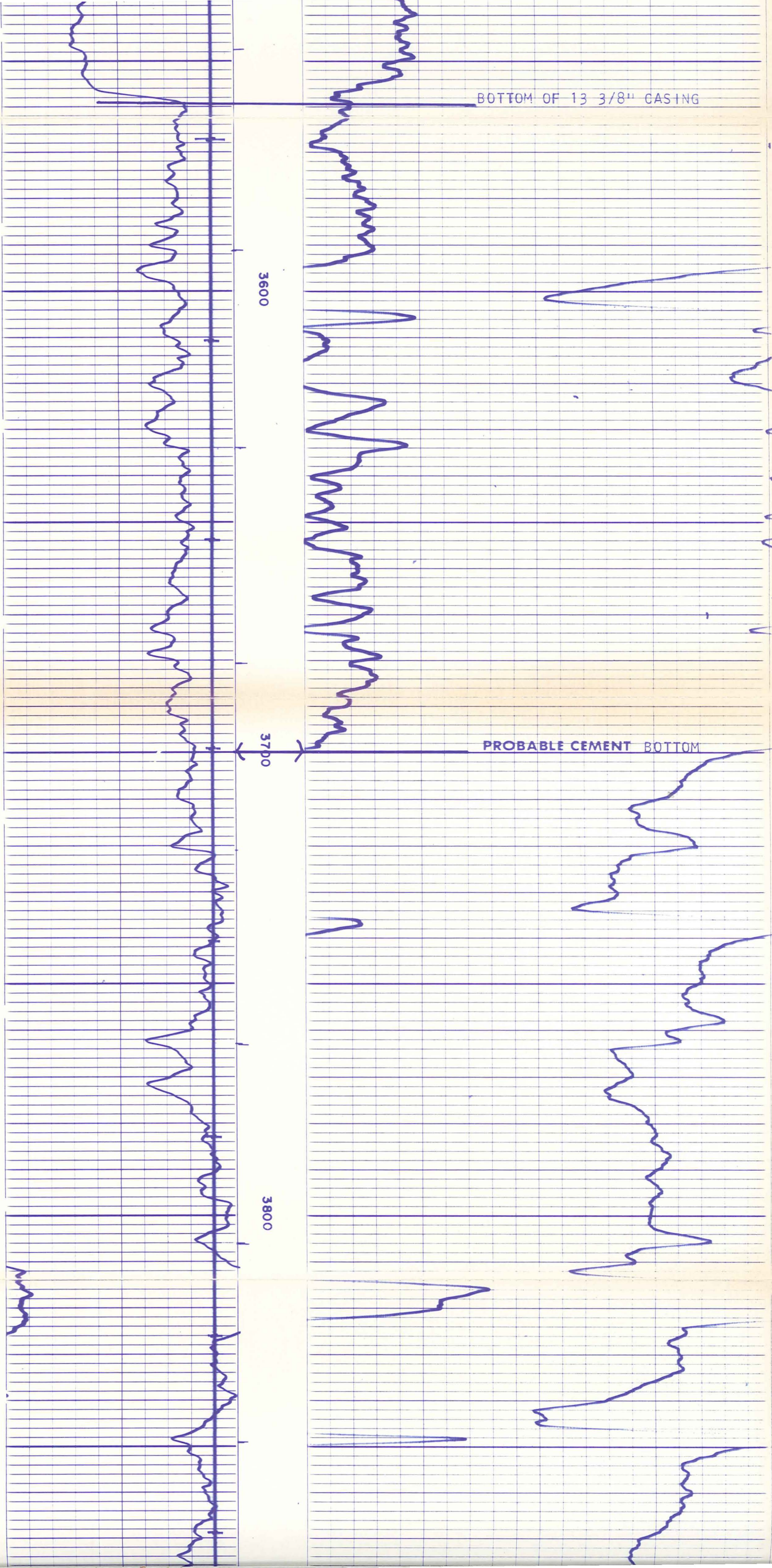
Liner
Top
3284

3300

3400

3500

BOTTOM OF 13 3/8" CASING



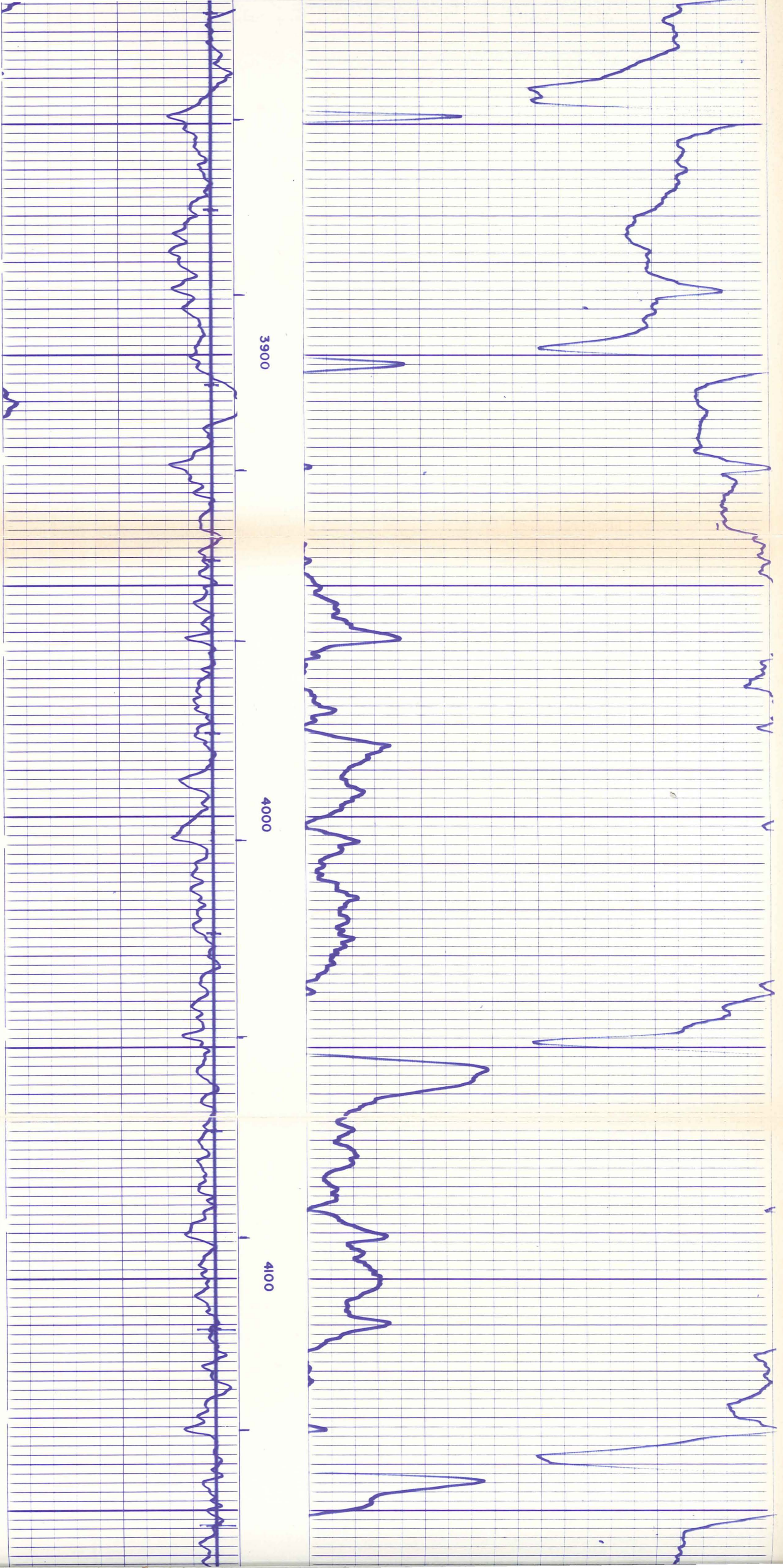
BOTTOM OF 13 3/8" CASING

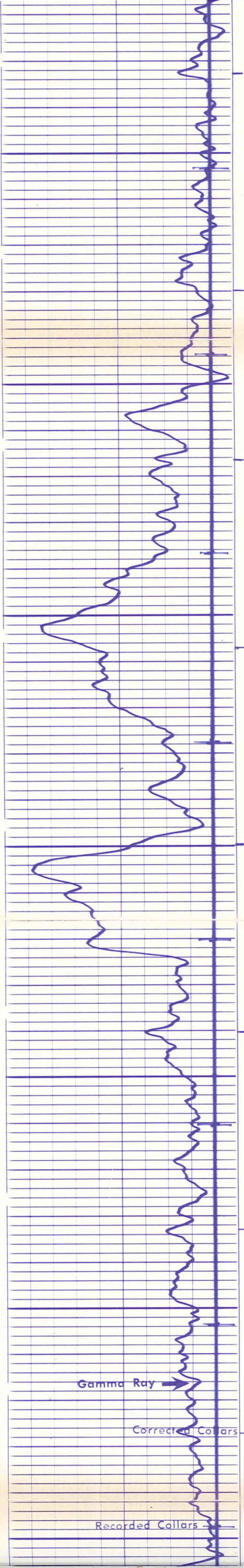
3600

3700

PROBABLE CEMENT BOTTOM

3800





4200

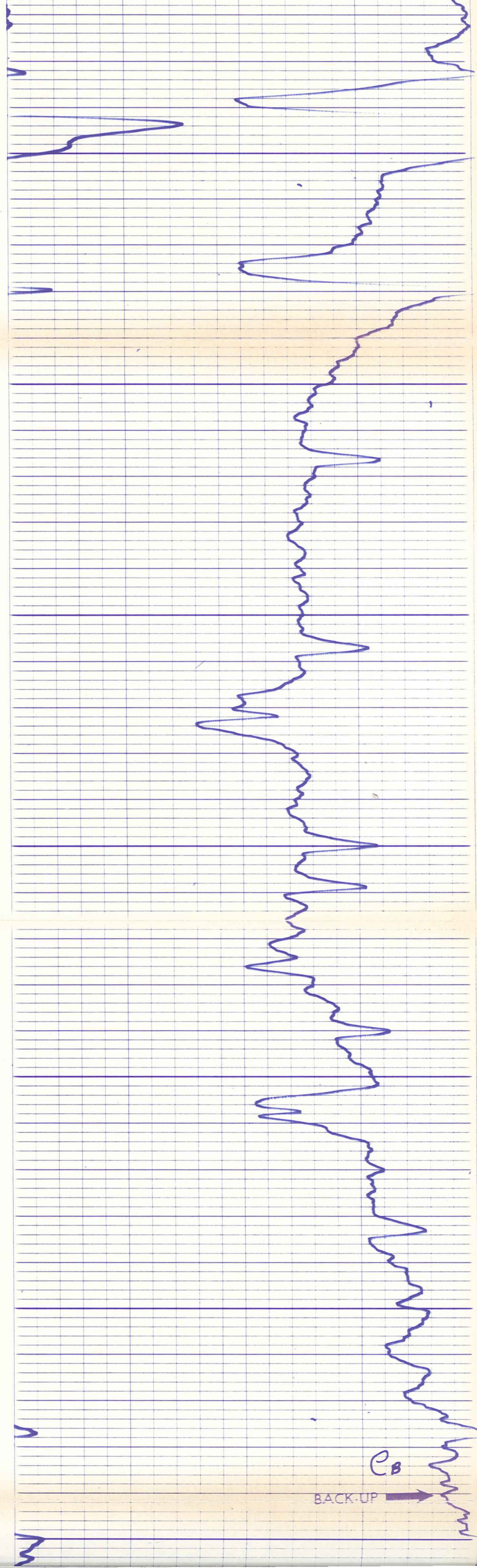
4300

4400

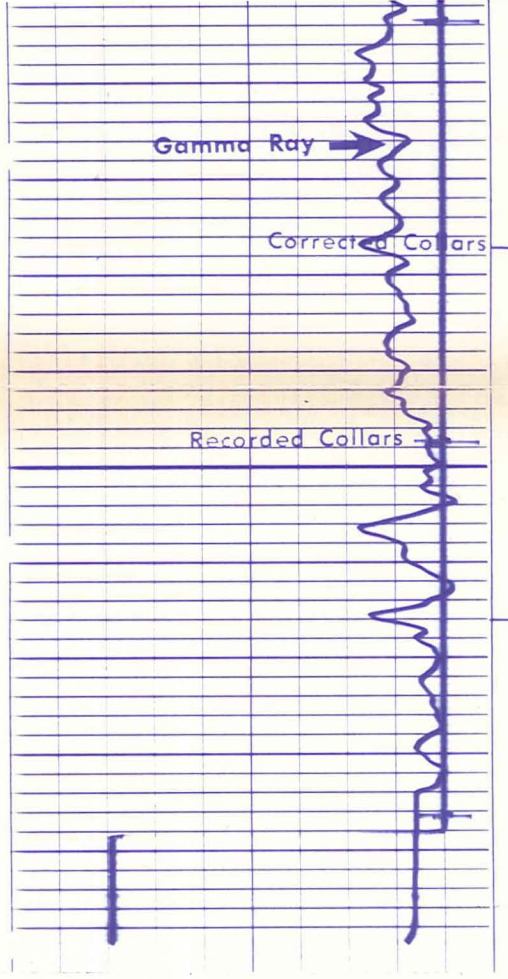
Gamma Ray →

Corrected Collars →

Recorded Collars →



CB
BACK-UP →



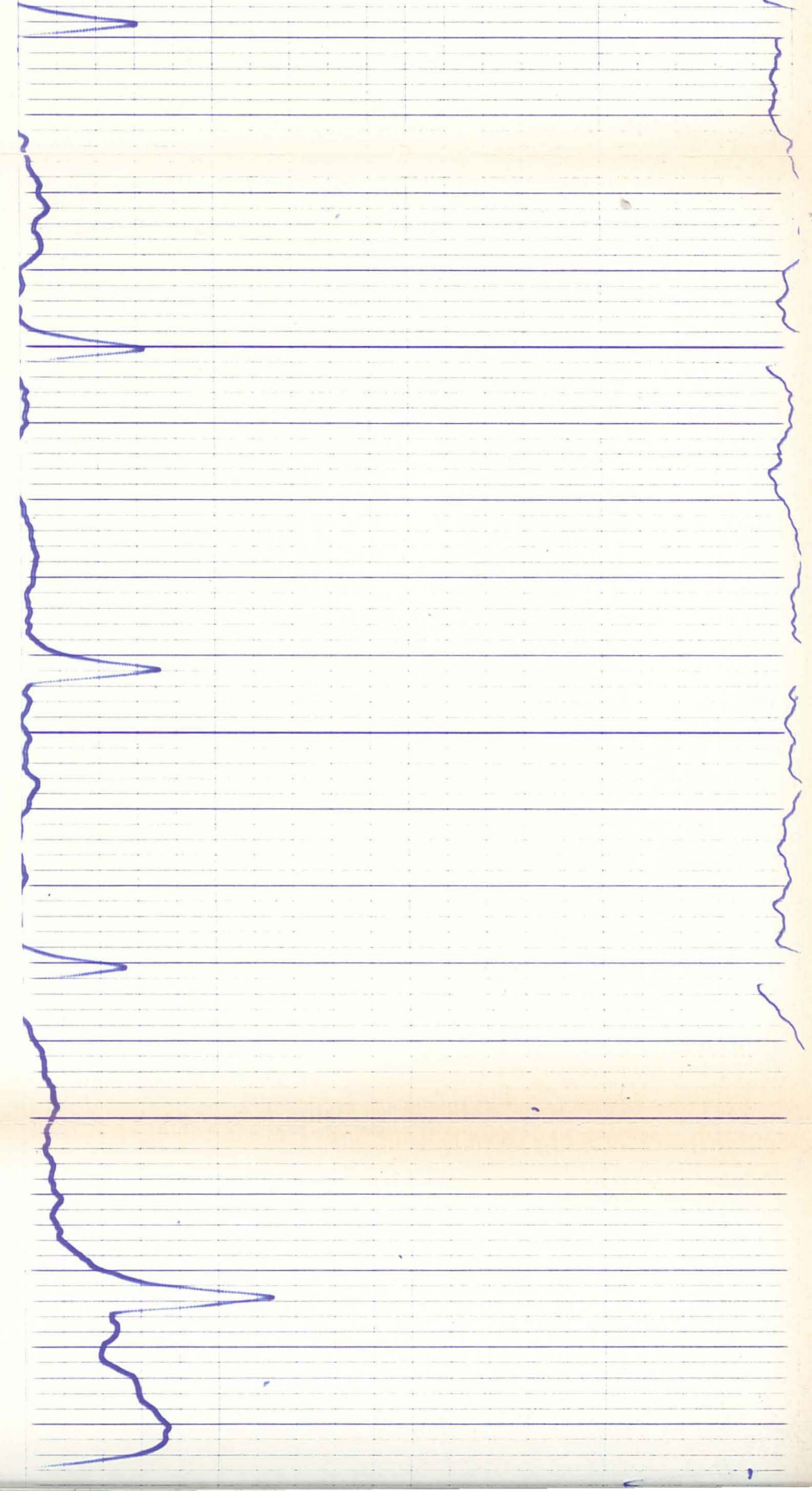
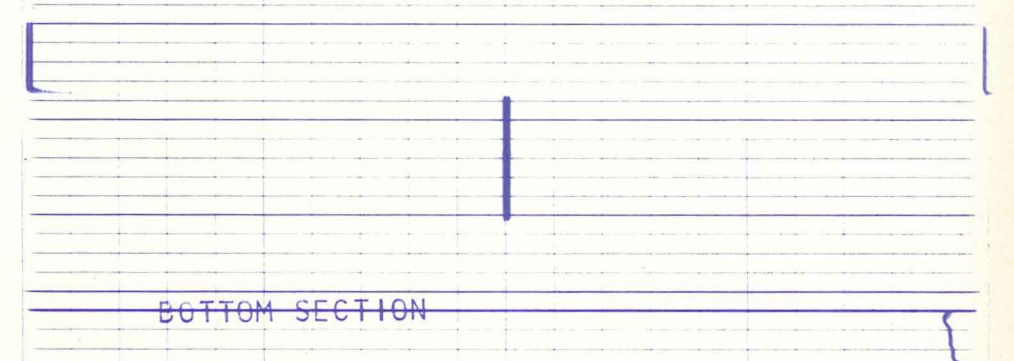
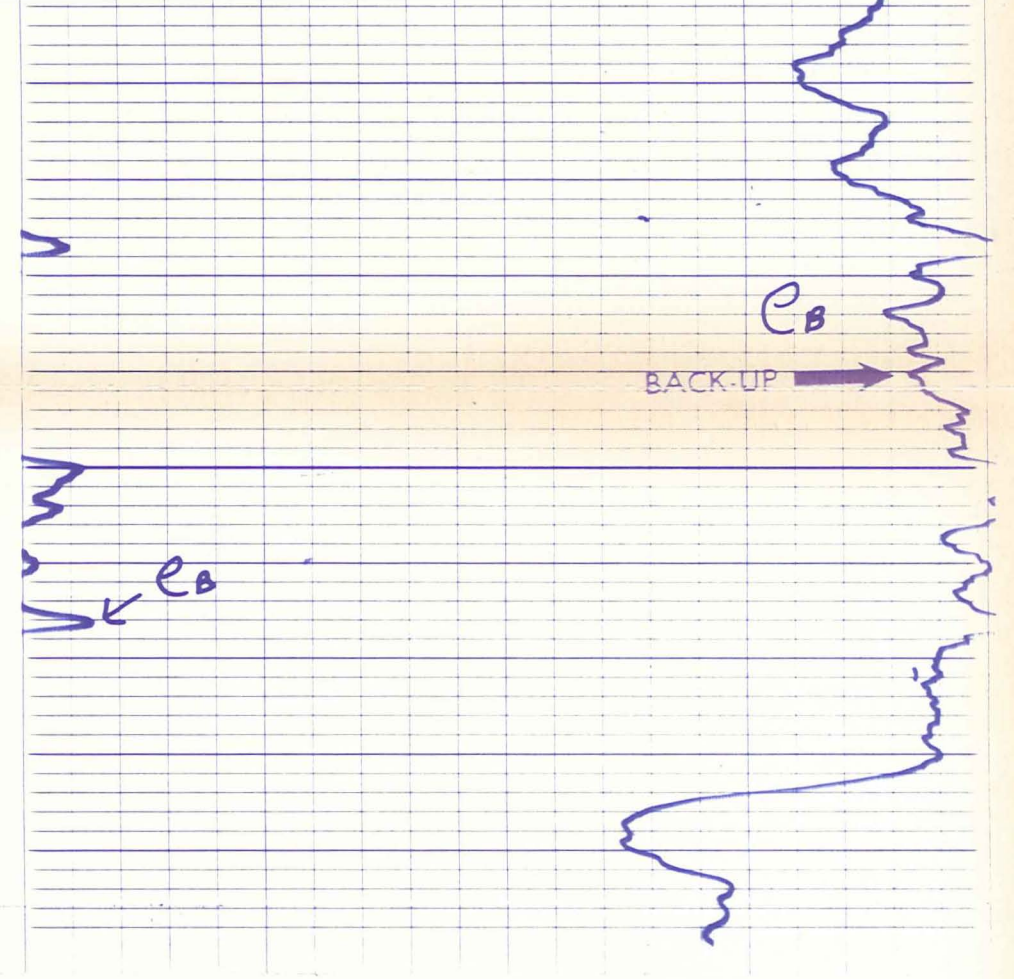
0

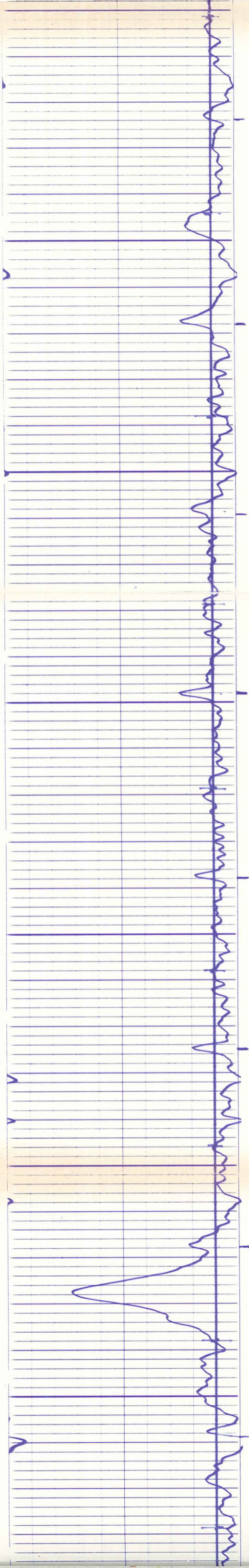
-FR-

5800 -LR-

5900

60

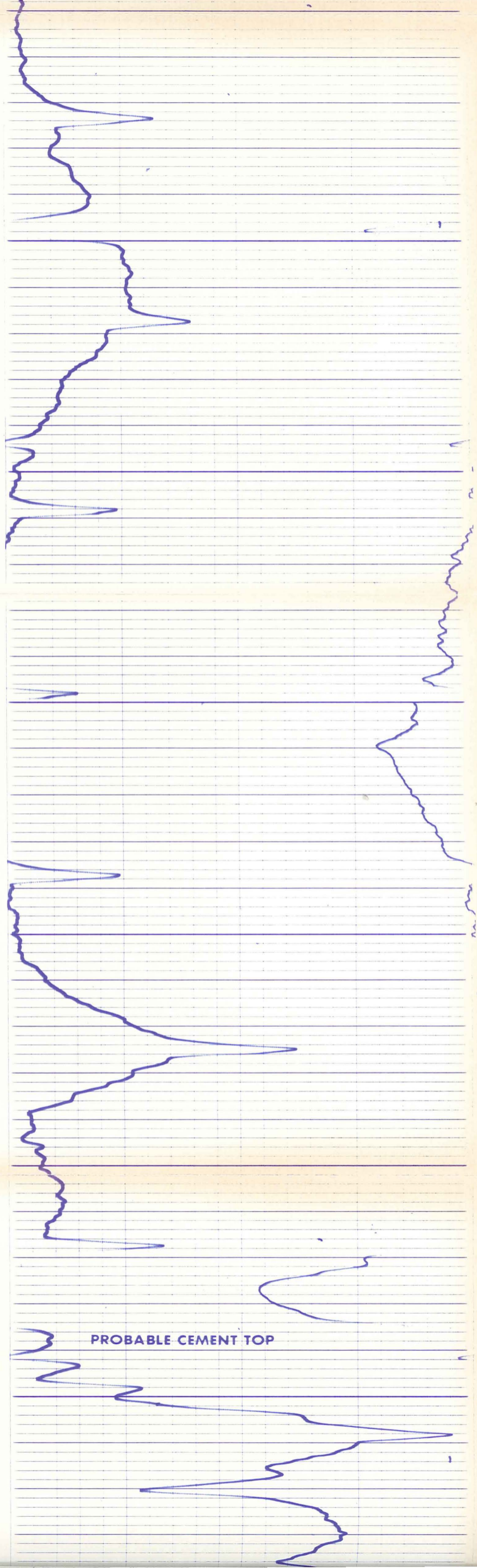




6000

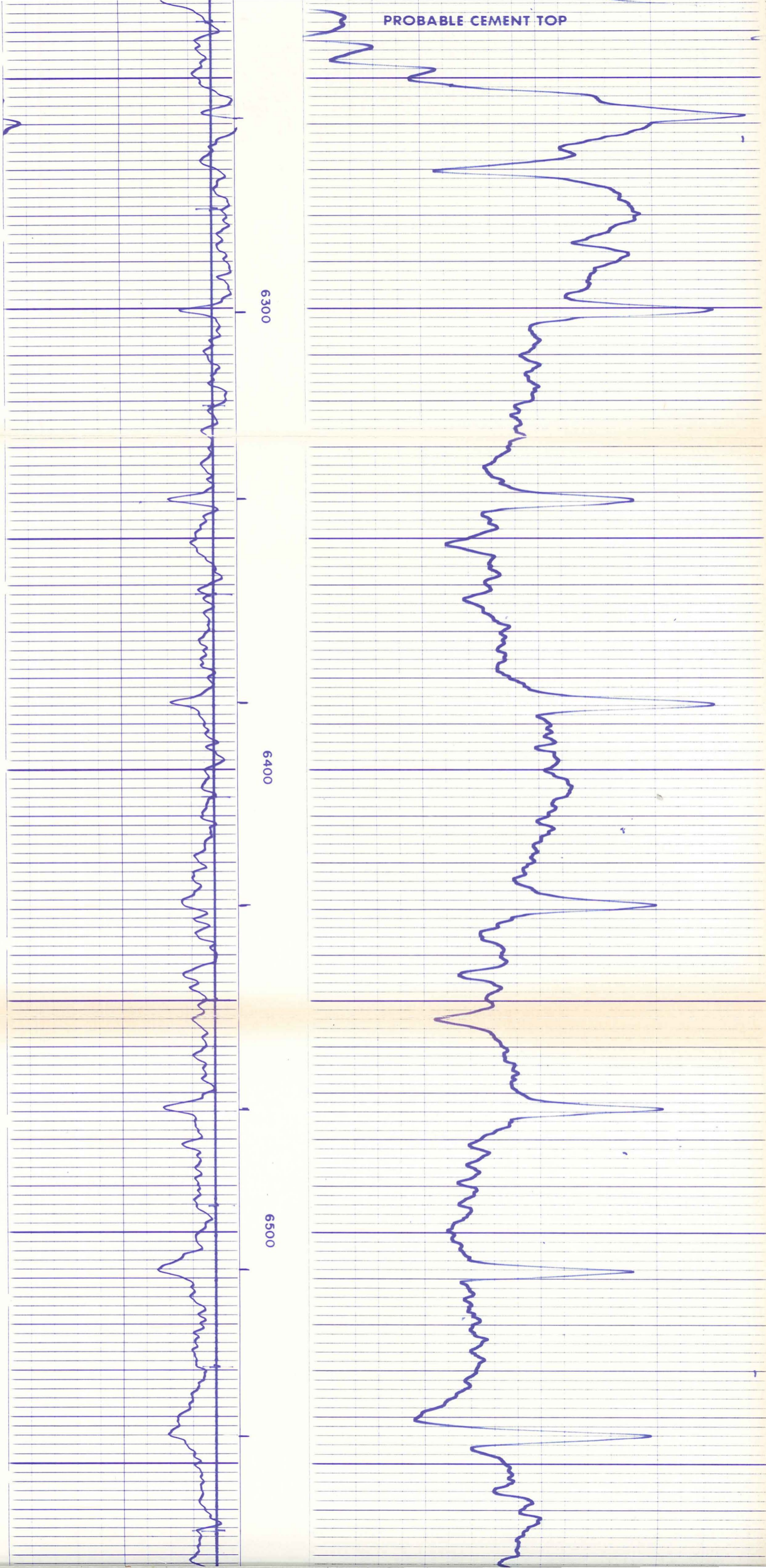
6100

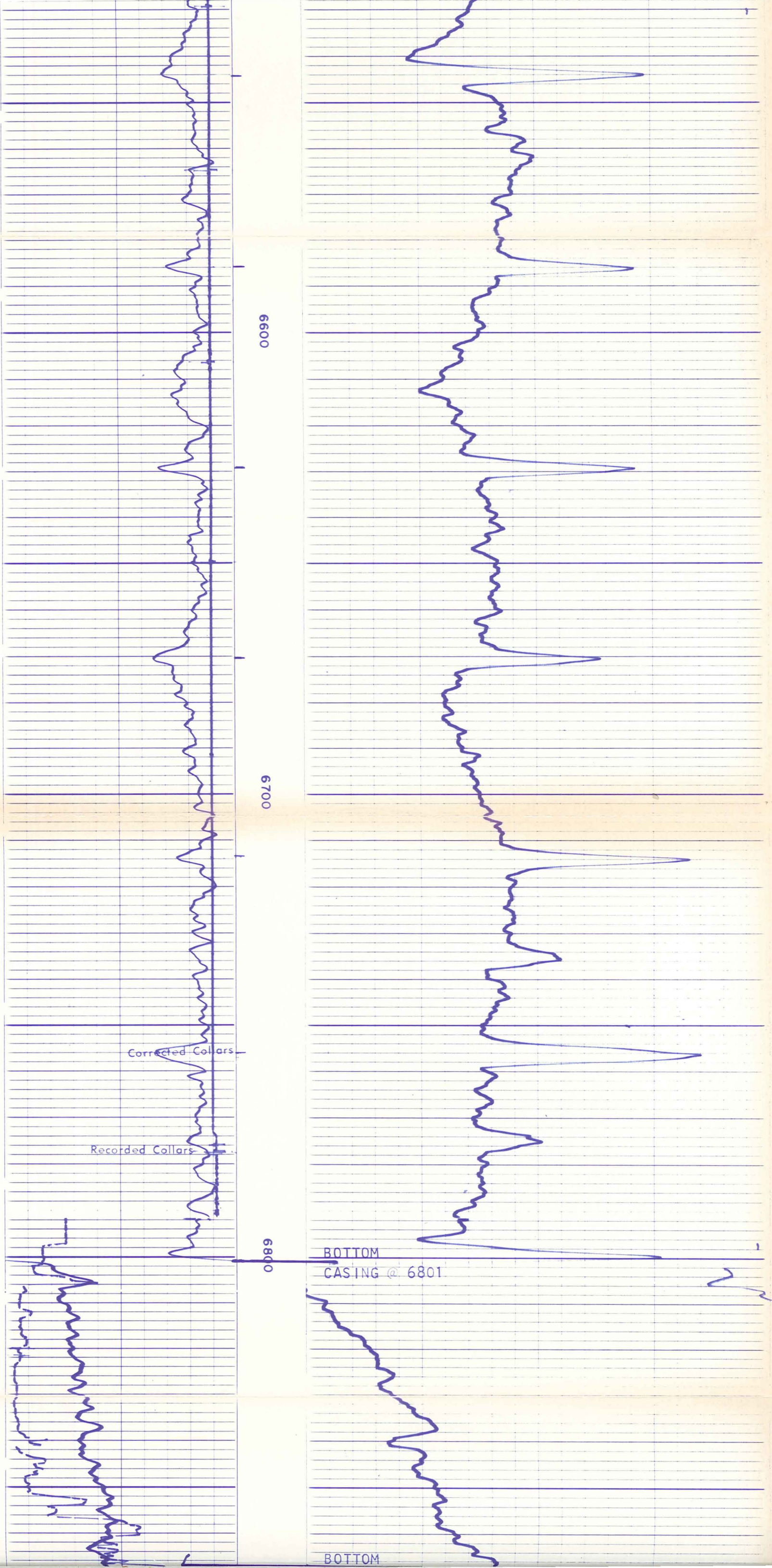
6200

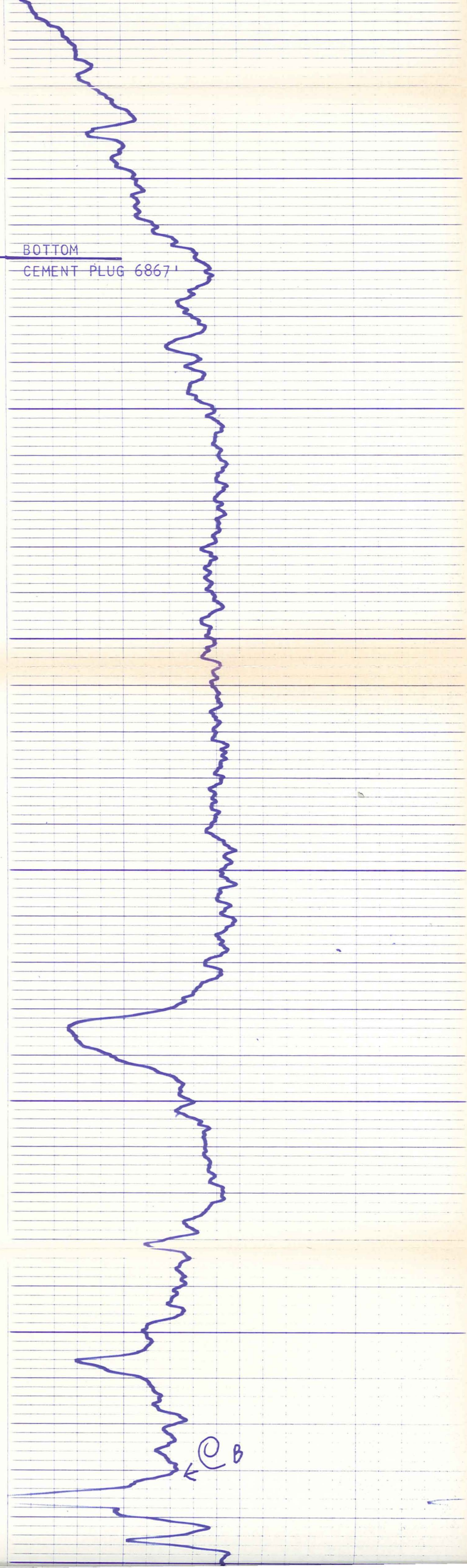
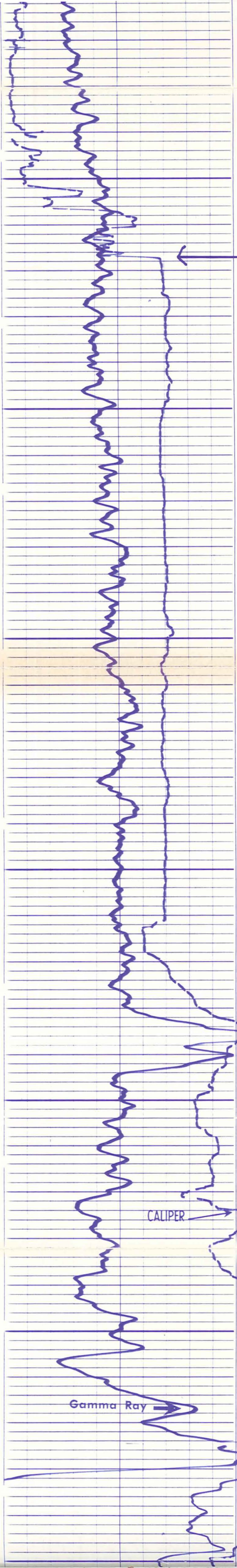


PROBABLE CEMENT TOP

PROBABLE CEMENT TOP







BOTTOM
CEMENT PLUG 6867'

6900

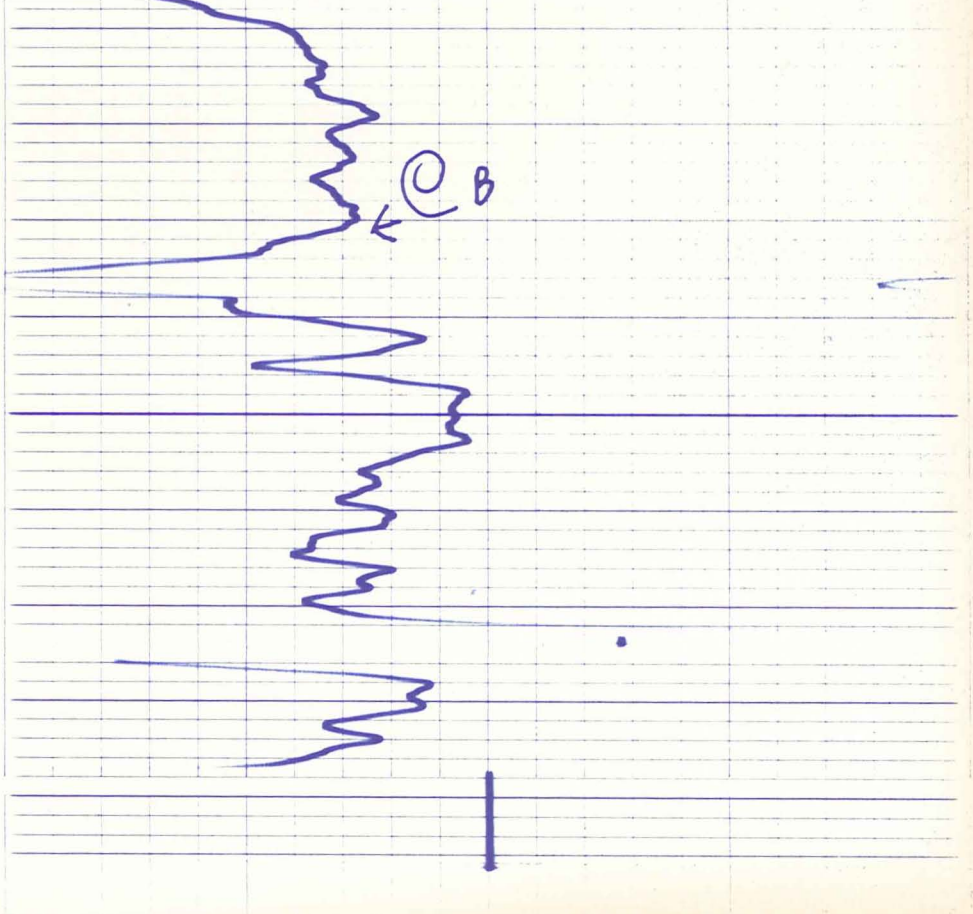
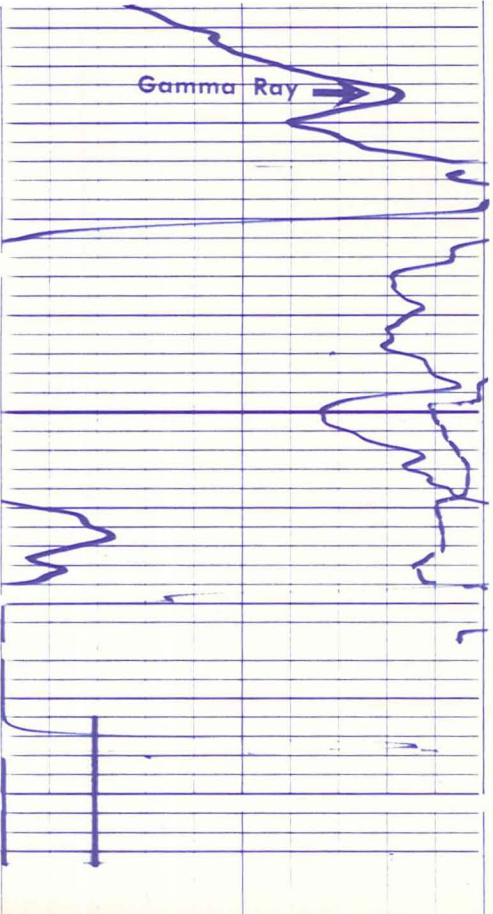
7000

7100

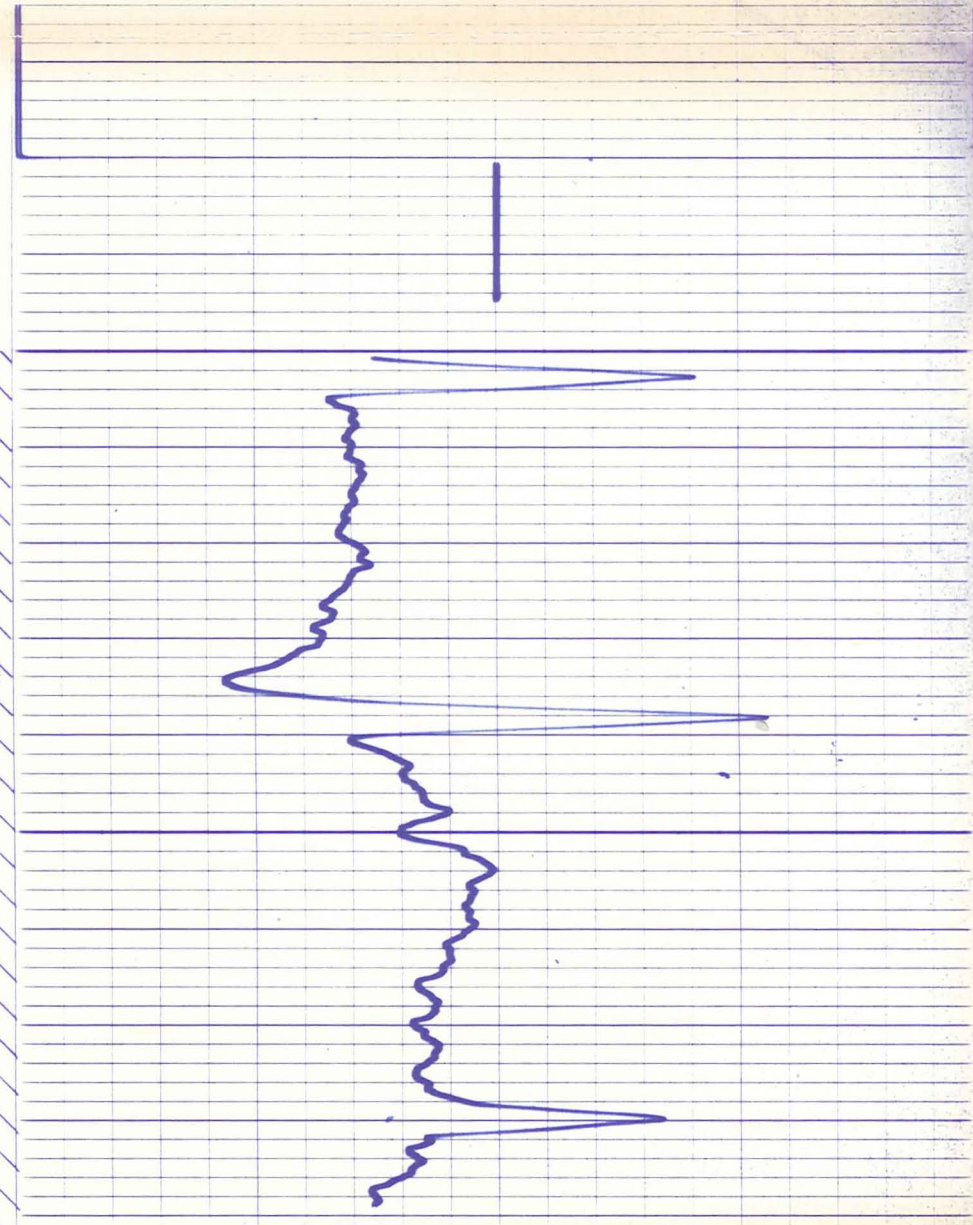
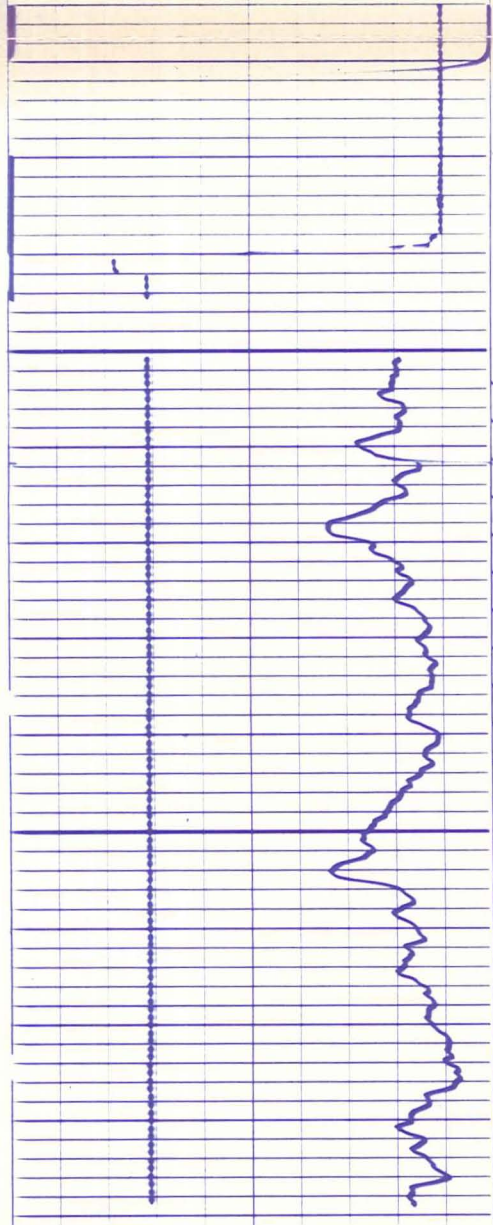
CALIPER

Gamma Ray

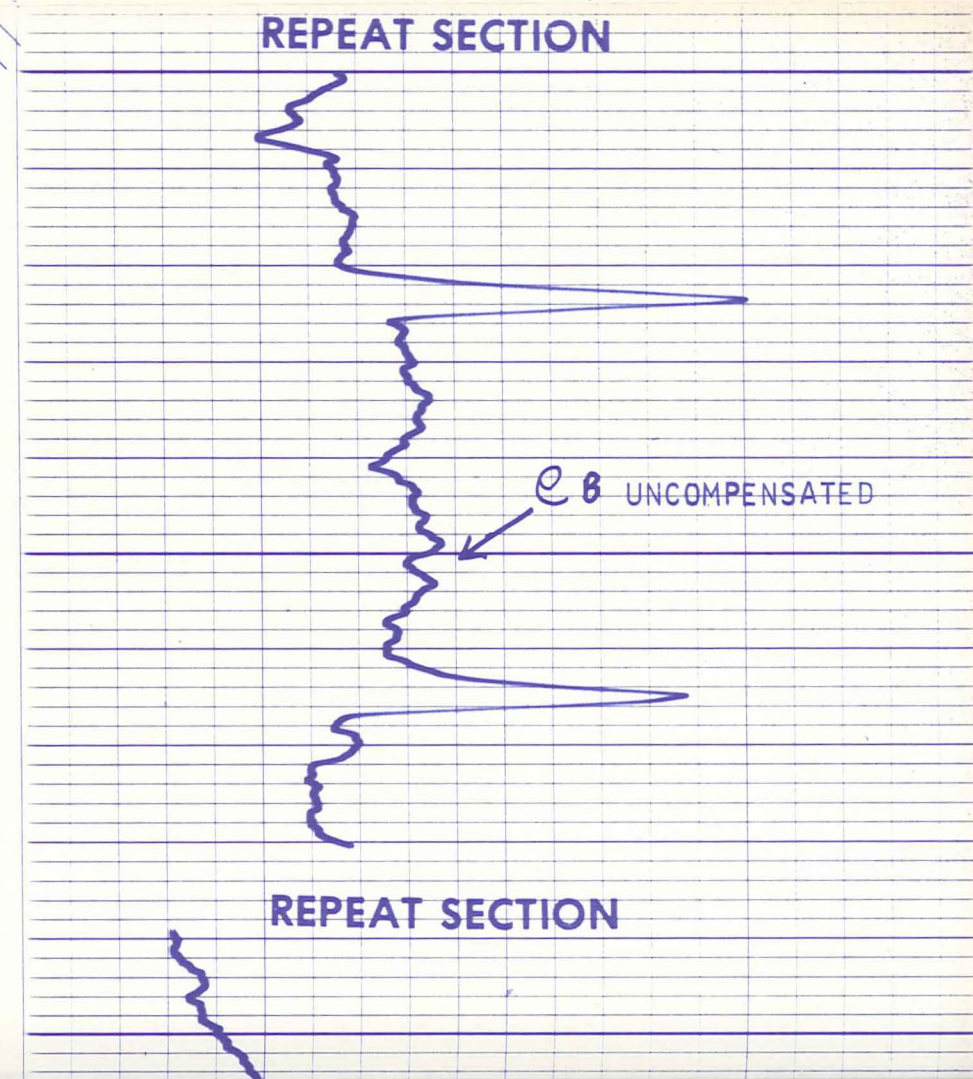
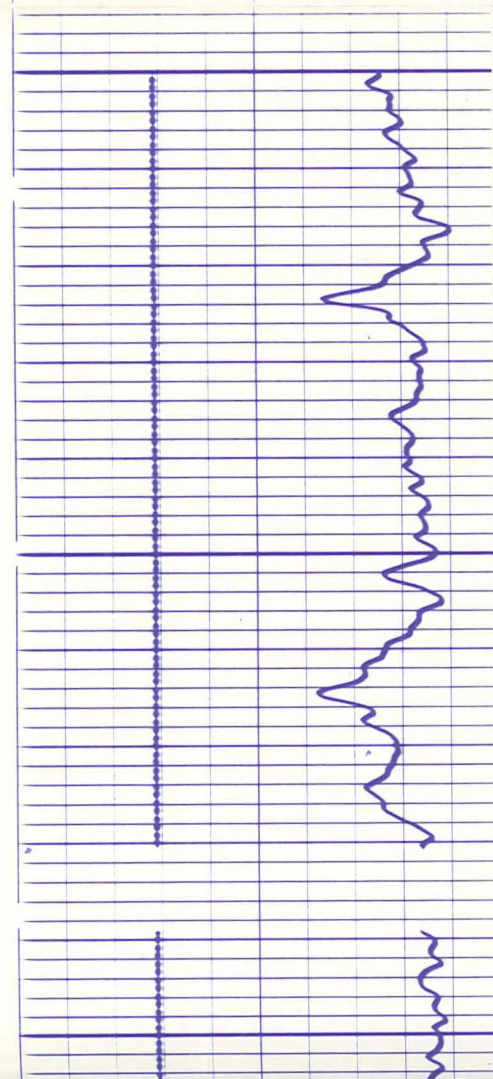
© B



-FR-



6500 MEMORIZER OUT - CURVES INVALID

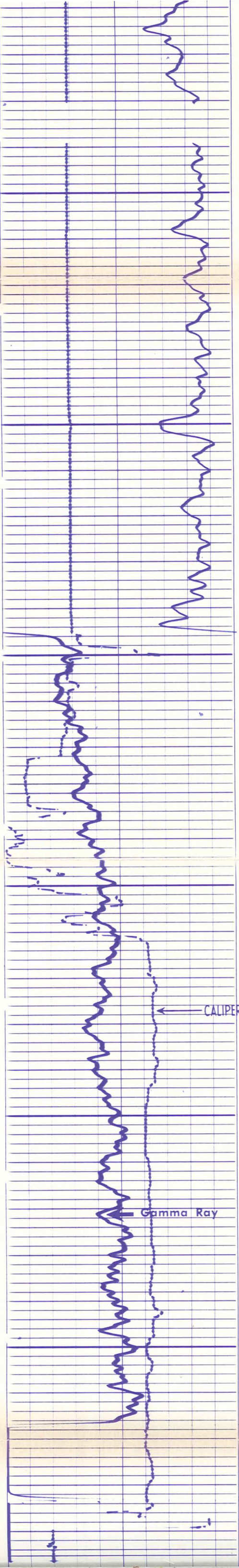


REPEAT SECTION

REPEAT SECTION

6600

6700



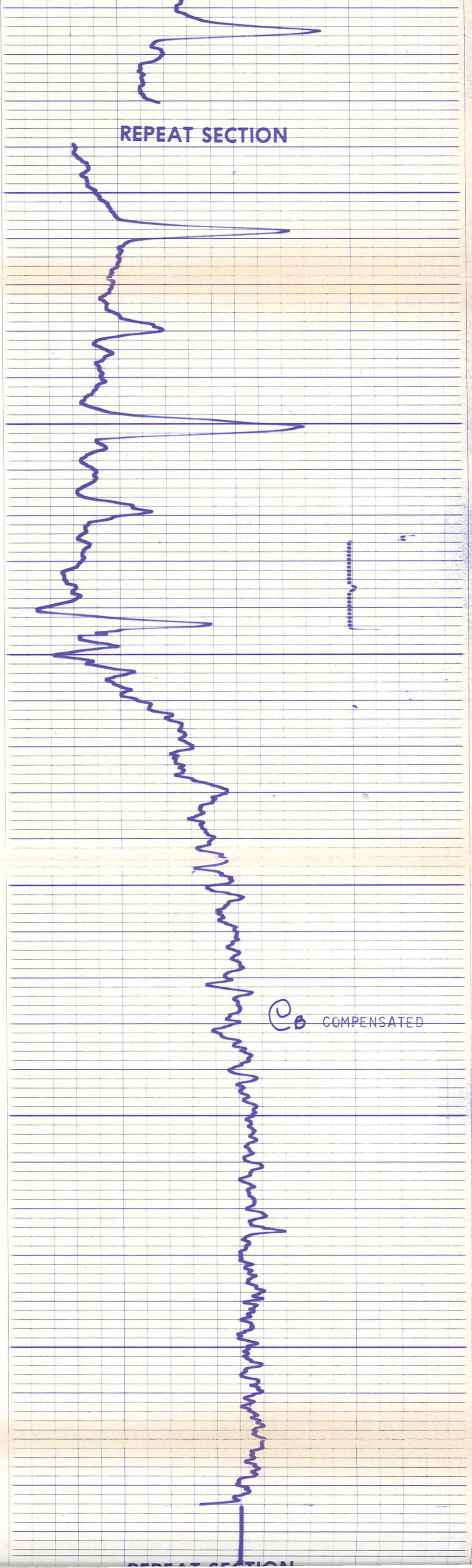
6700

6800

6900

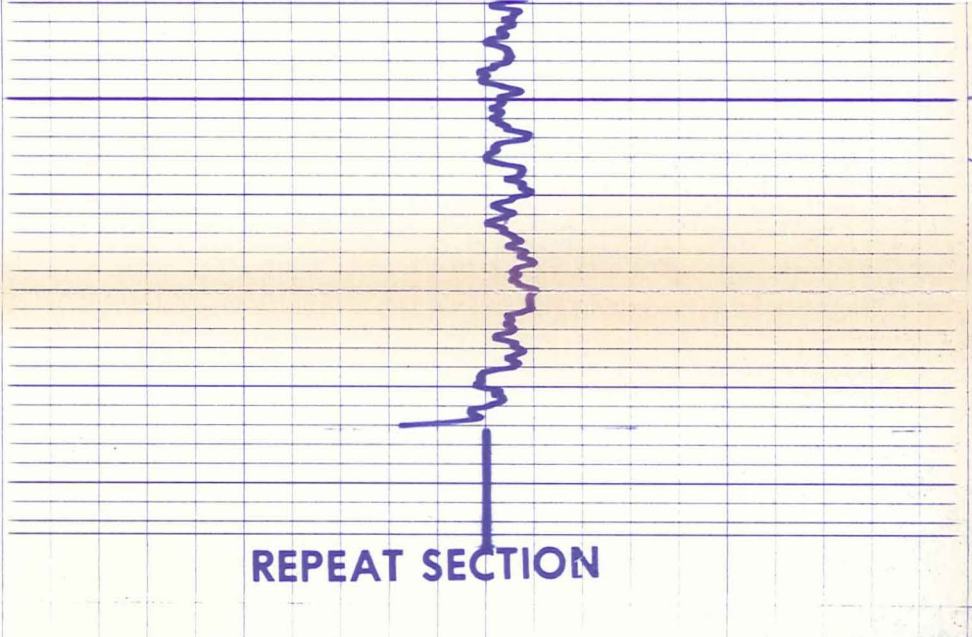
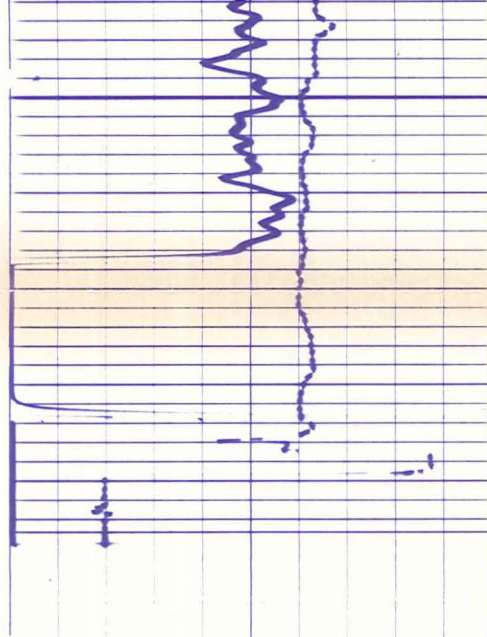
CALIPER

Gamma Ray

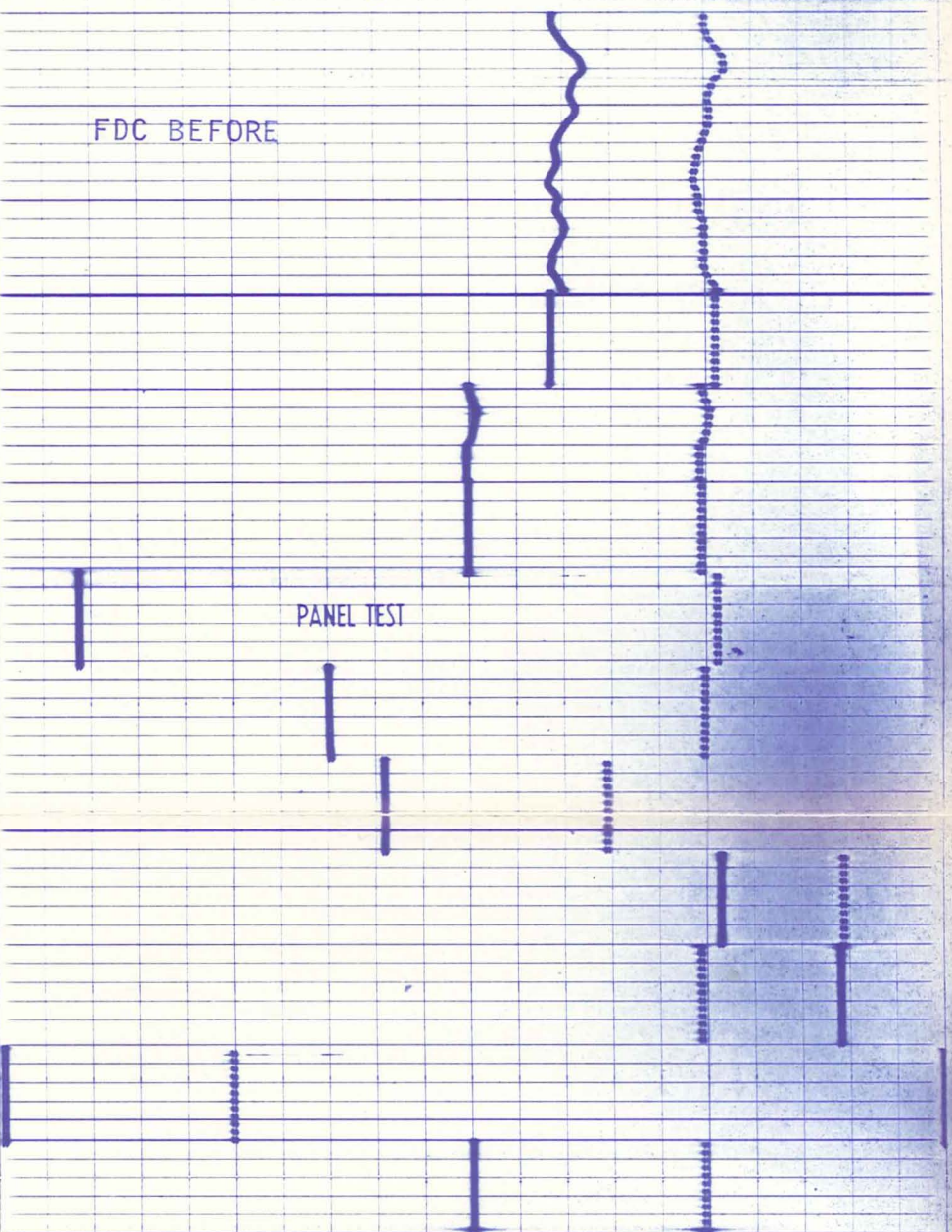
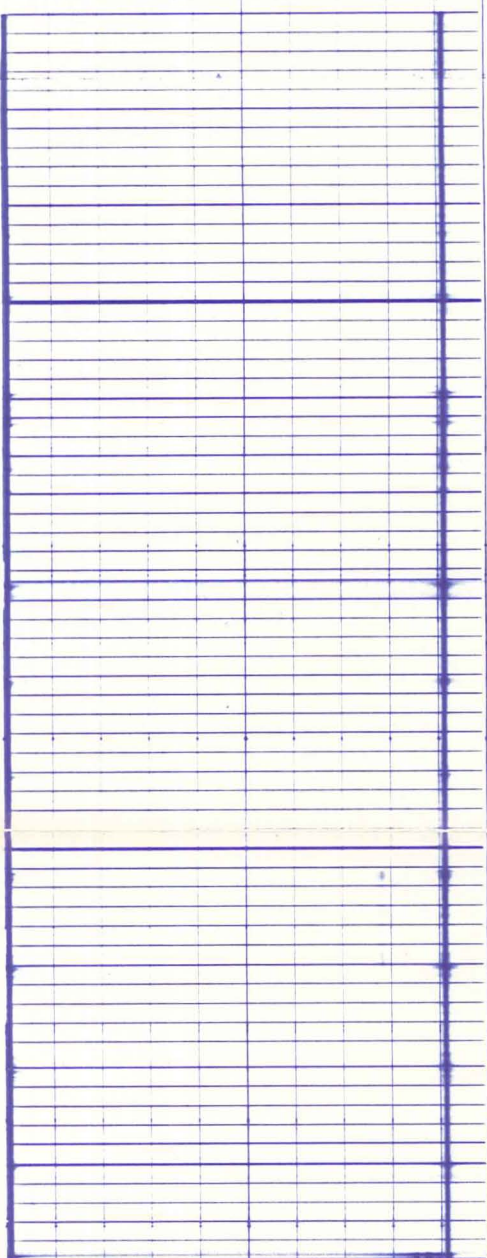


REPEAT SECTION

COMPENSATED



REPEAT SECTION

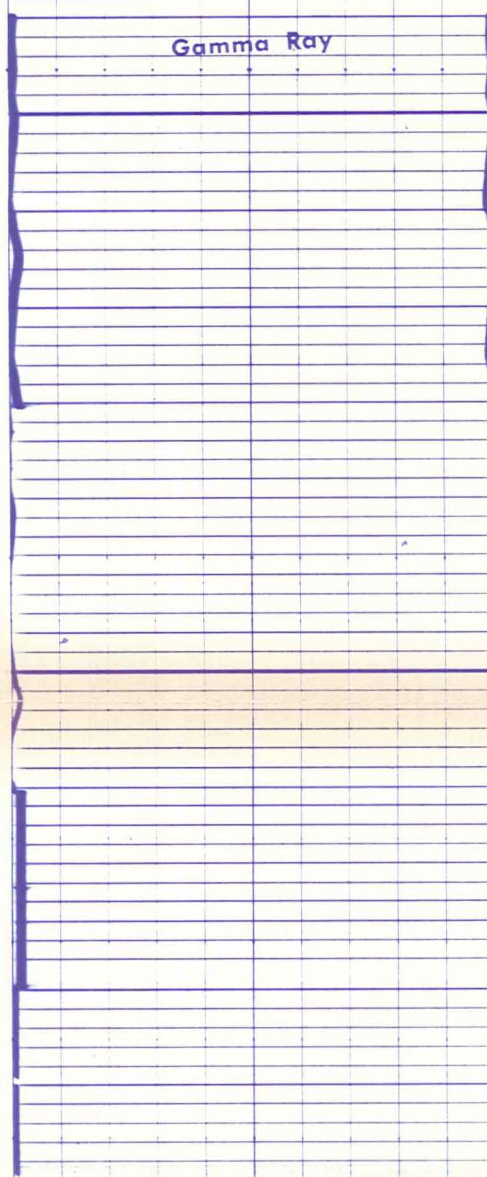


FDC BEFORE

PANEL TEST

- 12
- 11
- 10
- 9
- 8
- 7
- 6
- 2
- 1

Gamma Ray



- 6
- 5
- 4
- 3
- 2
- 1