

Field Print
Schlumberger

UNCOMPENSATED FORMATION
DENSITY AFTER CEMENTING

COUNTY _____
FIELD _____
LOCATION _____
WELL _____
COMPANY _____

COMPANY E.G. & G. IDAHO, INC.
GL02580
WELL INEL No. 1
FIELD GEO THERMAL EXPLORATION
COUNTY BUTTE STATE IDAHO
LOCATION SITBUNR29E
API SERIAL NO. SEC. TWP. RANGE
Other Services: HRT

Permanent Datum: GROUND LEVEL; Elev.: 4874.8
Log Measured From G.L.; Ft. Above Perm. Datum
Drilling Measured From G.L.
Elev.: K.B. 4895
D.F.: G.L. 4874.8

Date	<u>24 JUN 79</u>			
Run No.	<u>ONE</u>			
Depth-Driller	<u>10,333</u>			
Depth-Logger (Schl.)	<u>N/R</u>			
Btm. Log Interval	<u>7172</u>			
Top Log Interval	<u>3010</u>			
Casing-Driller	<u>978 @ 6796</u>	@		@
Casing-Logger	<u>6801</u>			
Bit Size	<u>1 1/4"</u>			
Type Fluid in Hole	<u>WATER</u>			
Dens. Visc.				
pH				
Fluid Loss		ml		ml
Source of Sample				
Rm @ Meas. Temp.		@		@
Rmf @ Meas. Temp.		@		@
Rmc @ Meas. Temp.		@		@
Source: Rmf Rmc		@		@
Rm @ BHT		@		@
Circulation Stopped	<u>N/A</u>			
Logger on Bottom	<u>1200:5/24</u>			
Max. Rec. Temp.	<u>N/R</u>			
Equip. Location	<u>5766 EVSTN</u>			
Recorded By	<u>RACHRISTENSEN</u>			
Witnessed By	<u>JOE FLODE</u>			

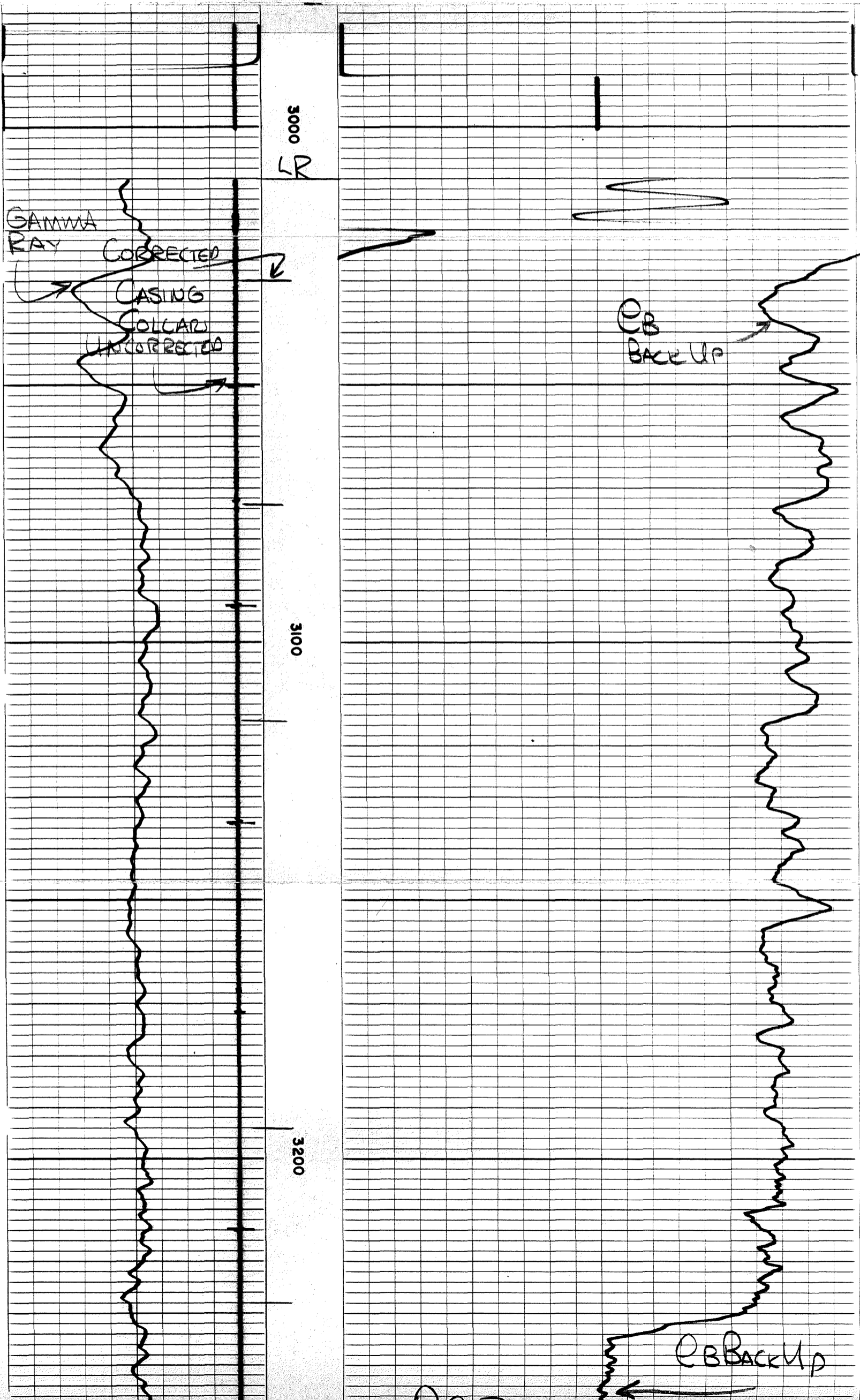
FOLD HERE The well name, location and borehole reference data were furnished by the customer.

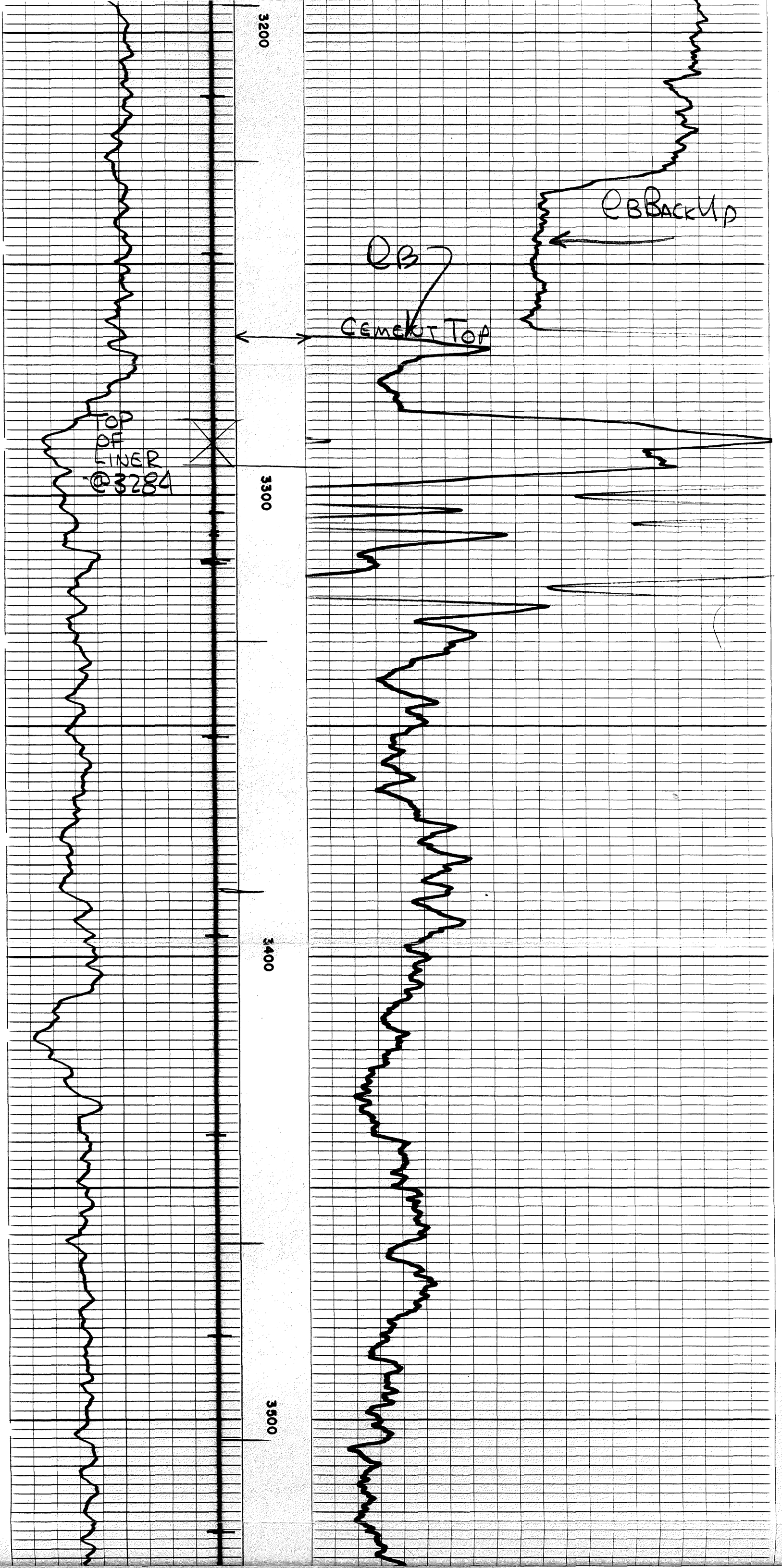
Run No.	<u>ONE</u>	SCALE CHANGES			
Service Order No.	<u>66012</u>	Type Log	Depth	Scale Up Hole	Scale Down Hole
API Serial No.	<u>1</u>				
Fluid Level	<u>1</u>				
EQUIPMENT DATA		REMARKS: <u>CB SCALES ARE APPROX</u>			
PGP EJ	<u>1049</u>				
PGC EB	<u>664</u>				
PGS EC	<u>184</u>				
GSR B	<u>3219</u>				
CALIBRATION DATA					
Speed - F.P.M.	<u>30</u>				
GR	BKG. CPS	<u>67</u>			
	Source CPS	<u>271</u>			
	Tc	<u>2</u>			

All interpretations are opinions based on inferences from electrical or other measurements and we cannot, and do not guarantee the accuracy or correctness of any interpretations, and we shall not, except in the case of gross or willful negligence on our part, be liable or responsible for any loss, costs, damages or expenses incurred or sustained by anyone resulting from any interpretation made by any of our officers, agents or employees. These interpretations are also subject to Clause 4 of our General Terms and Conditions as set out in our current Price Schedule.

0	GR (API)	100	1.0	(G-3)	2.0
			2.0	RHO B	(G-8) 3.0
100		200	3.0		(G-9) 4.0
	UNCORRECTED CASING COLLARS				

UNCORRECTED CASING COLLARS





3200

CB BACKUP

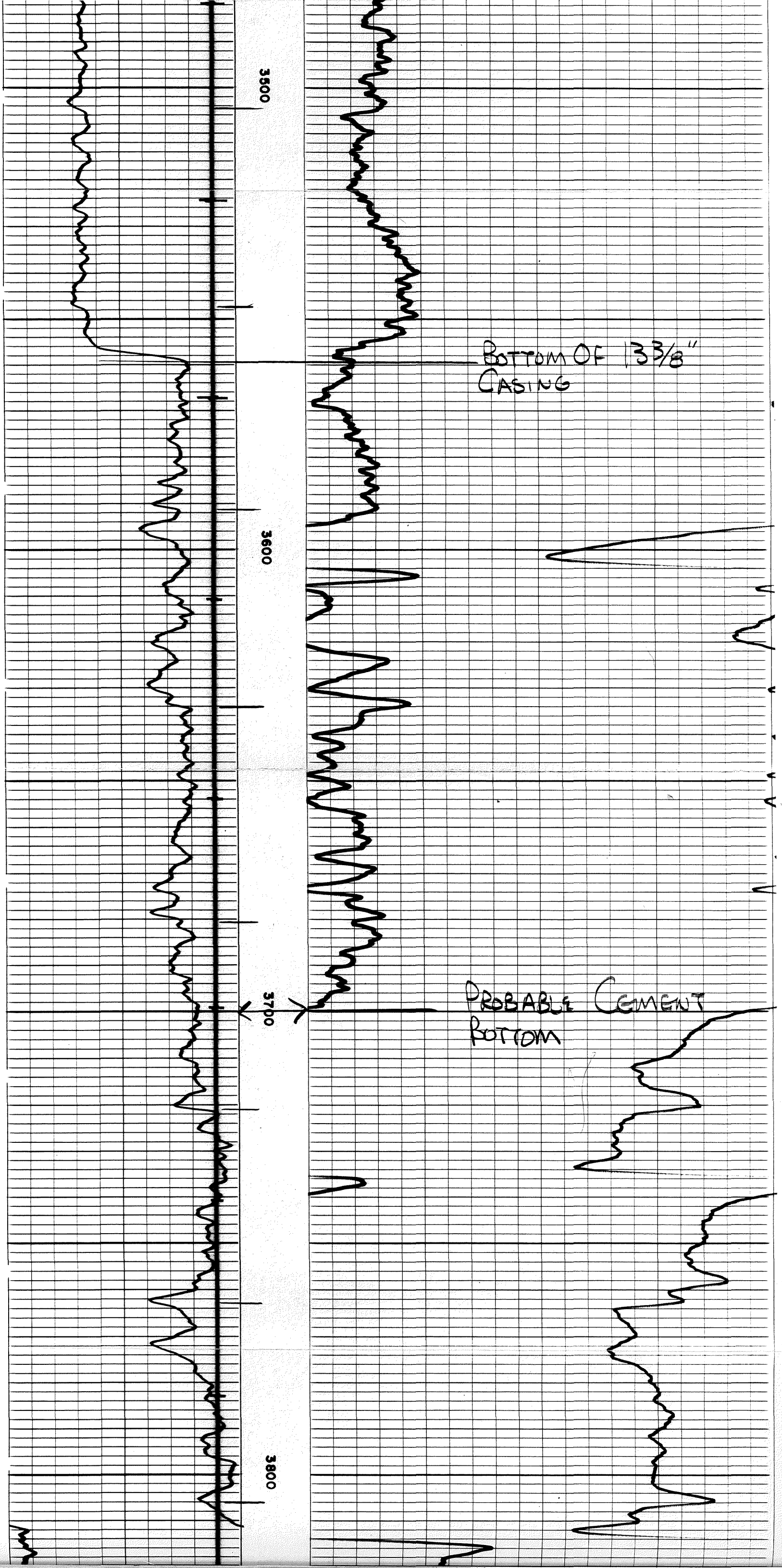
Q3
CEMENT TOP

OUTLINE
@ 3284

3300

3400

3500



3500

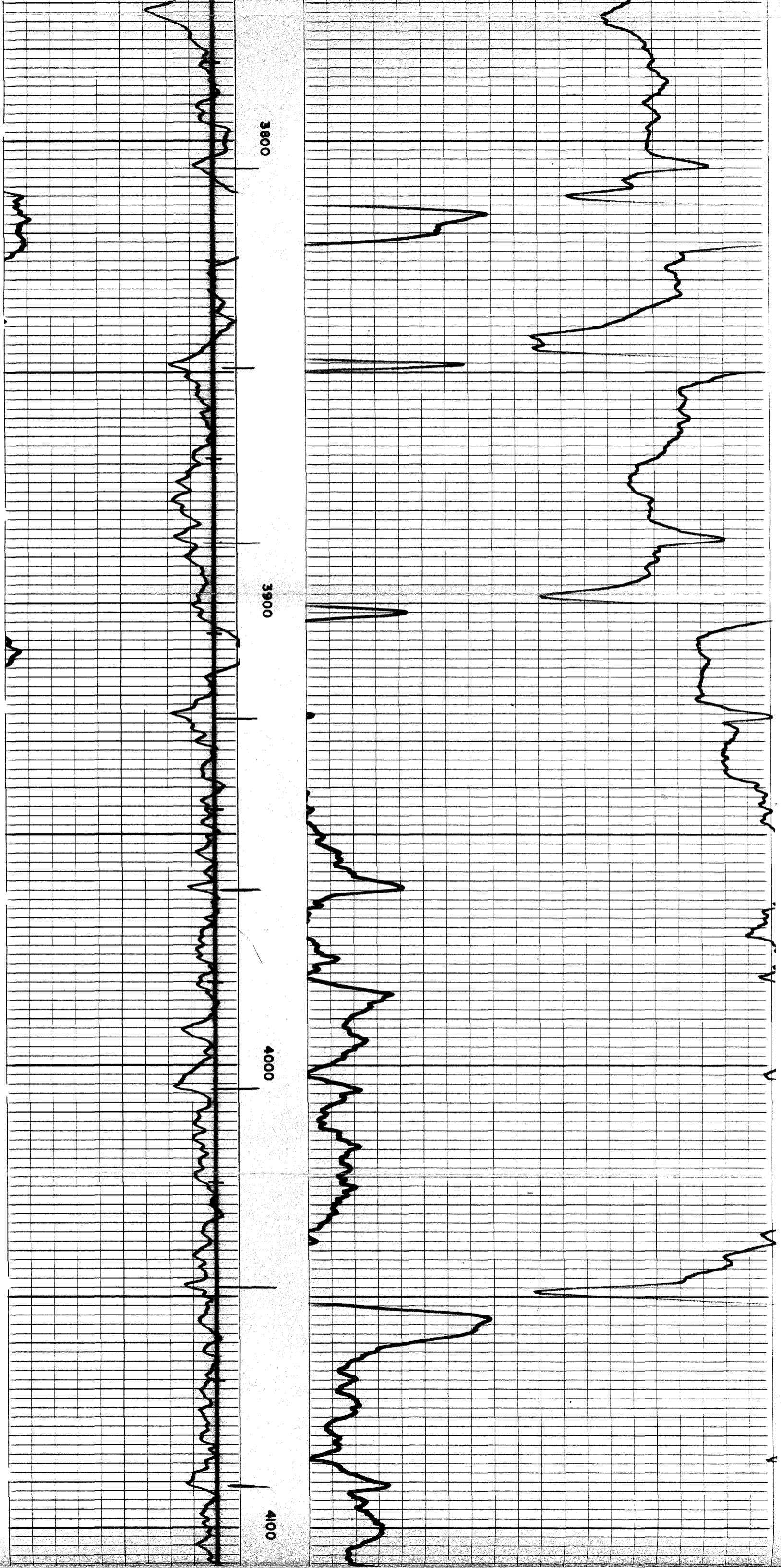
BOTTOM OF 13 3/8"
CASING

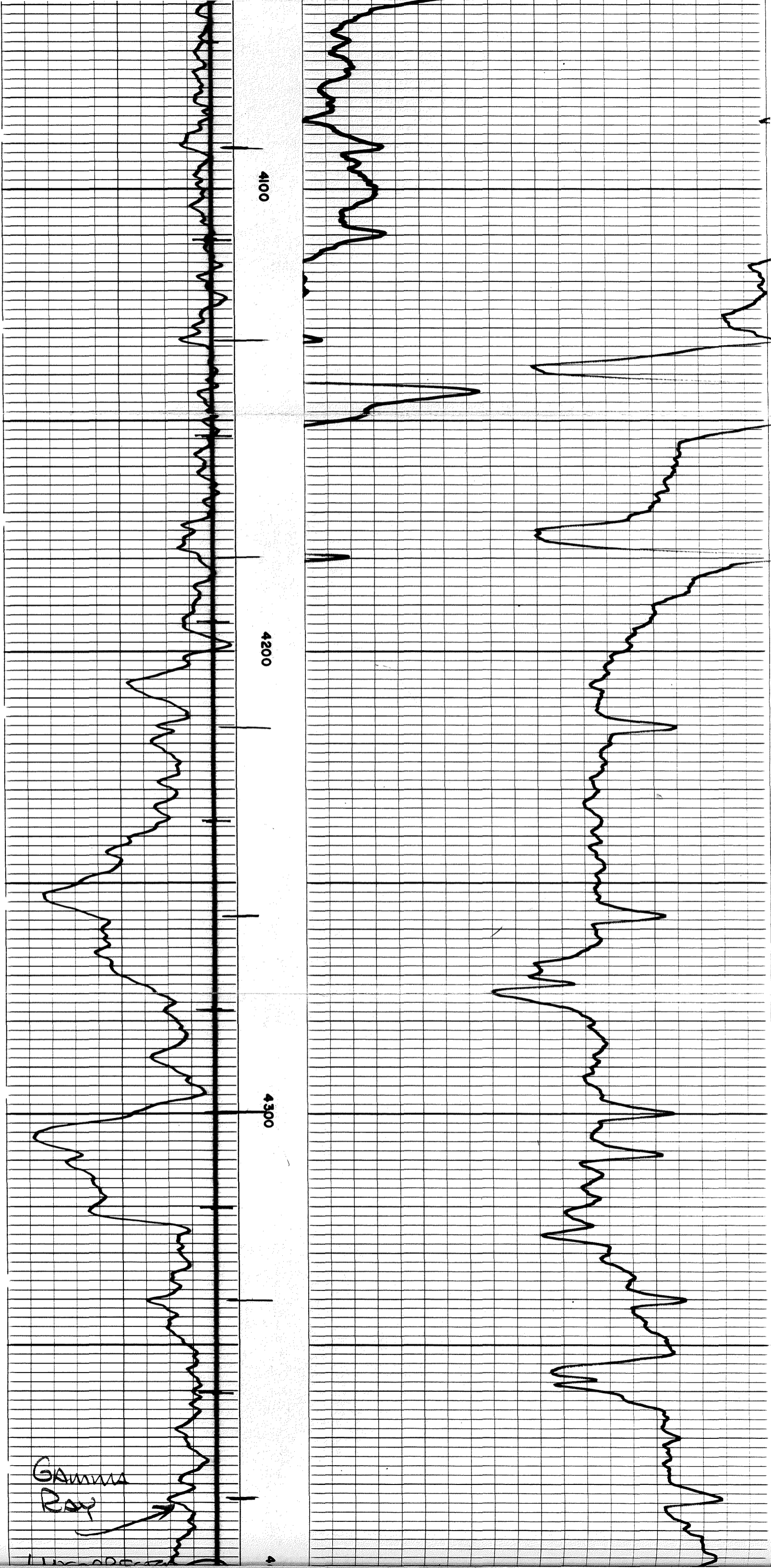
3600

3700

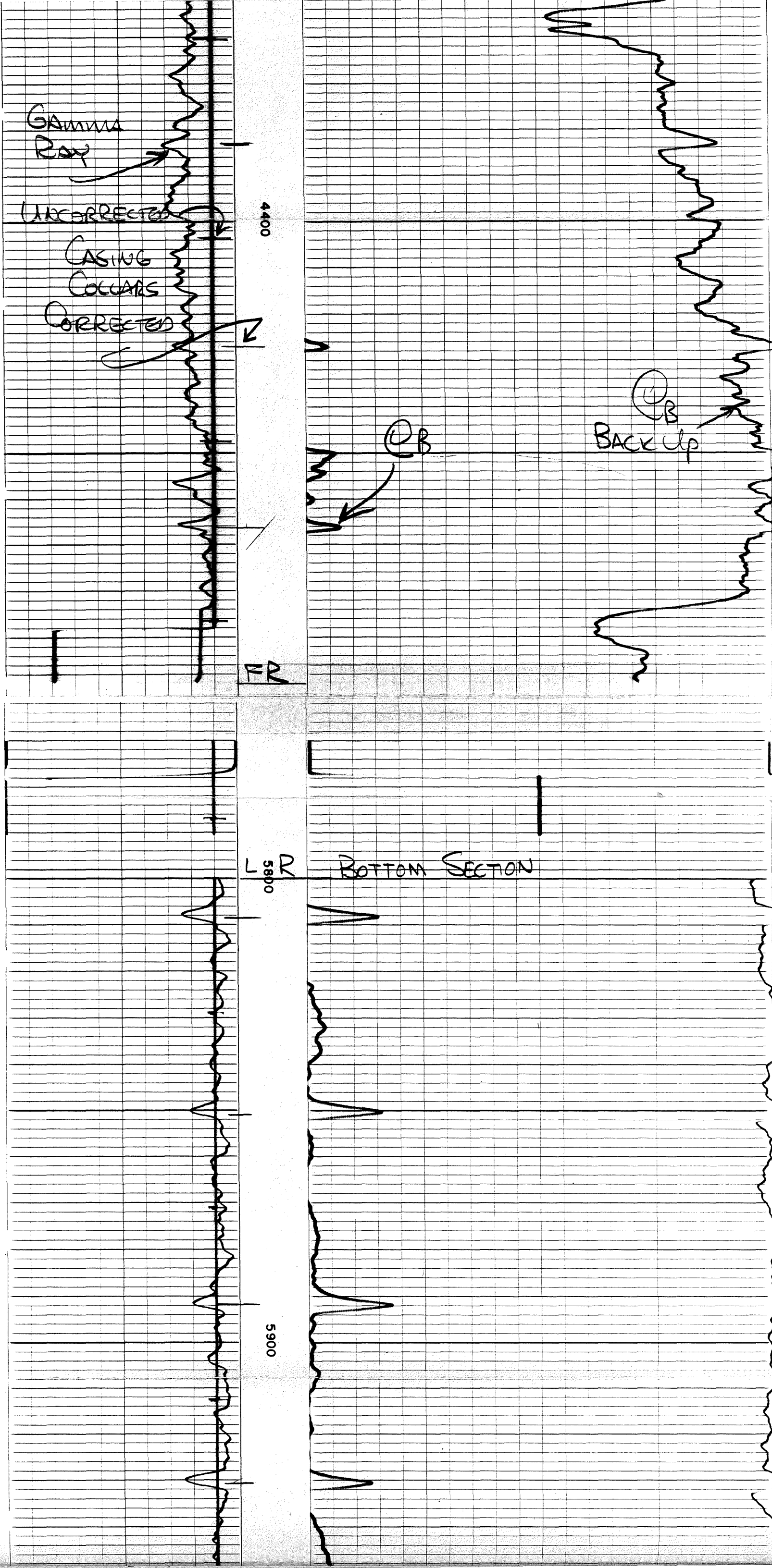
PROBABLE CEMENT
BOTTOM

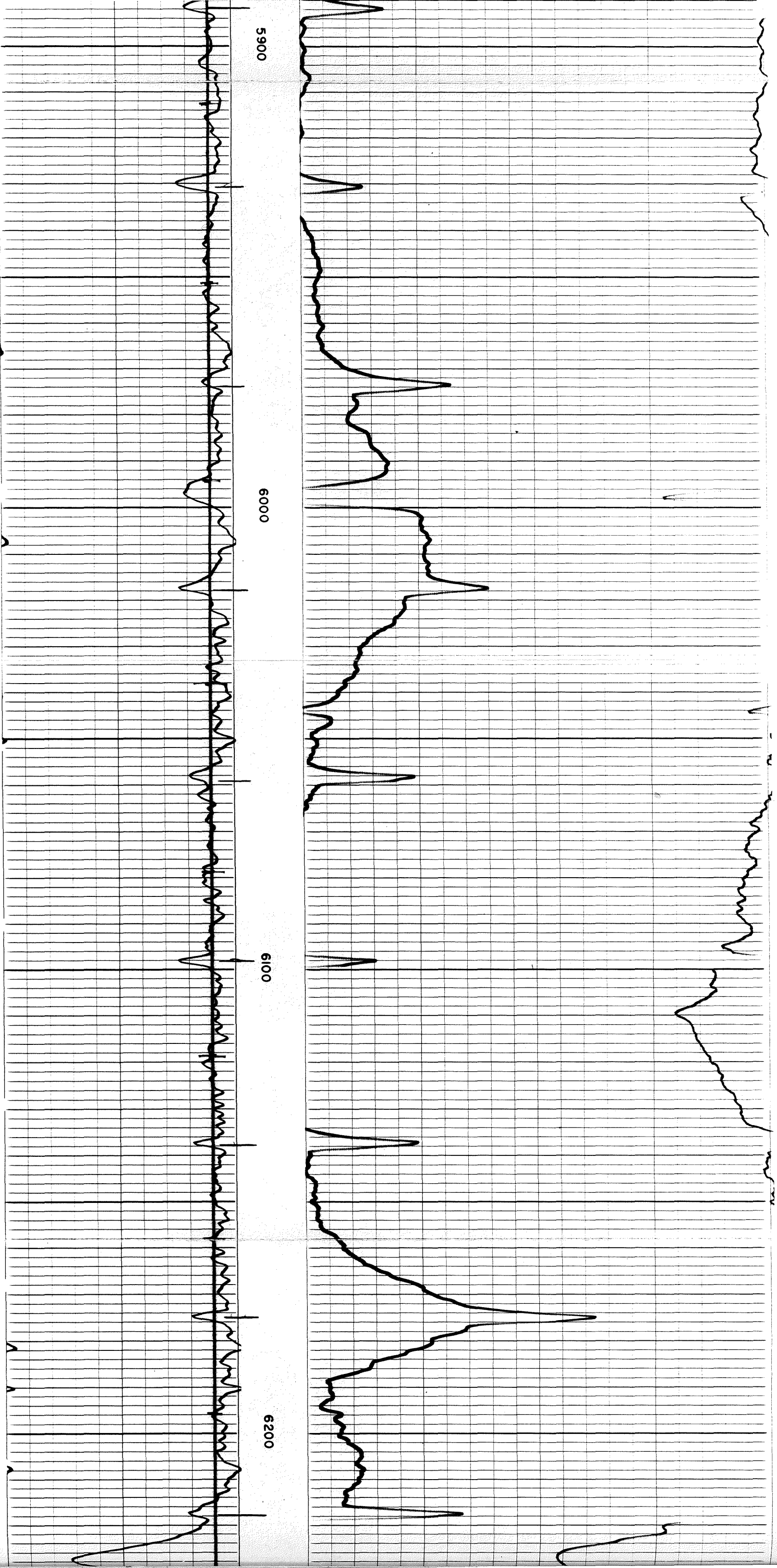
3800

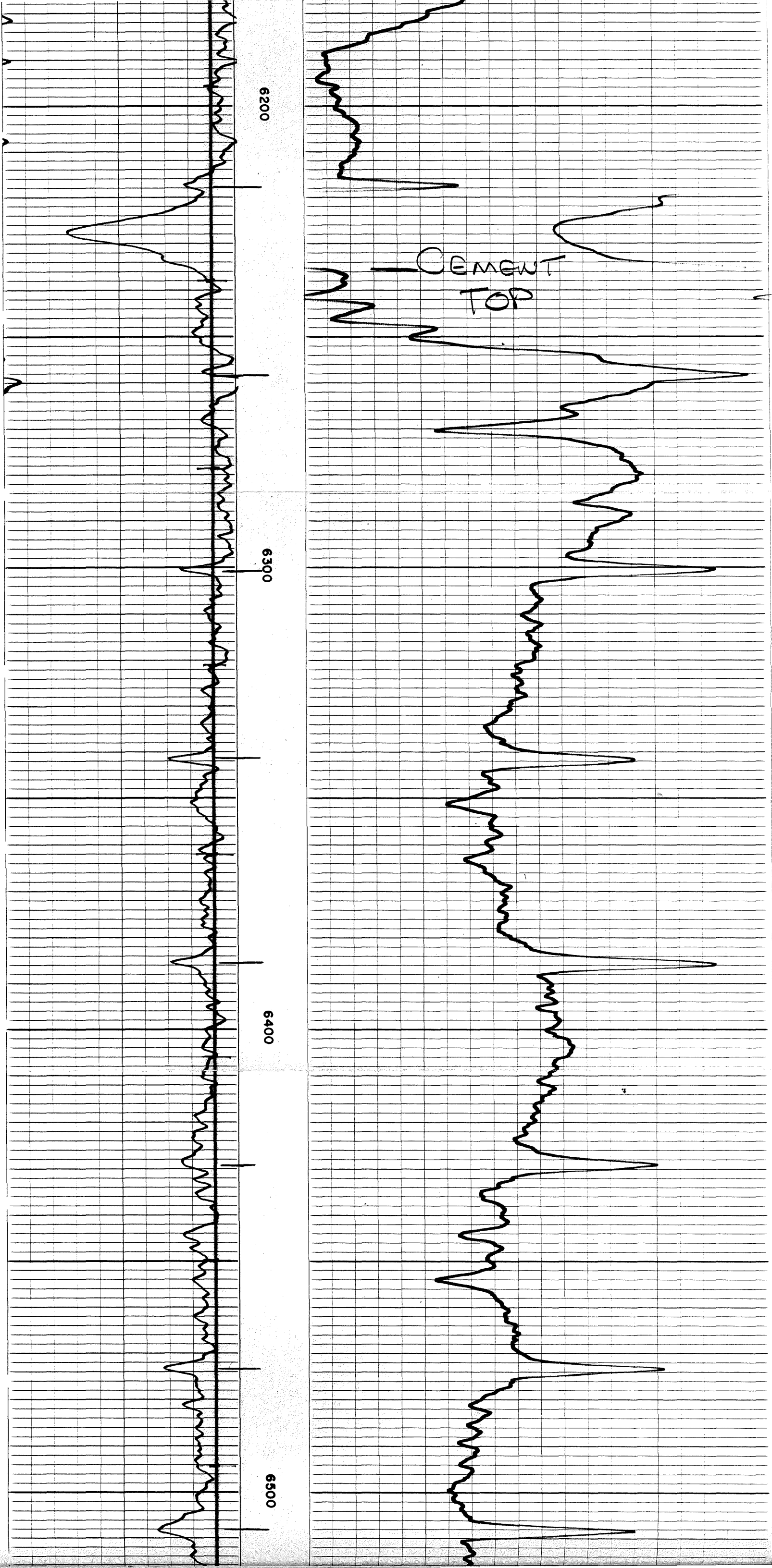


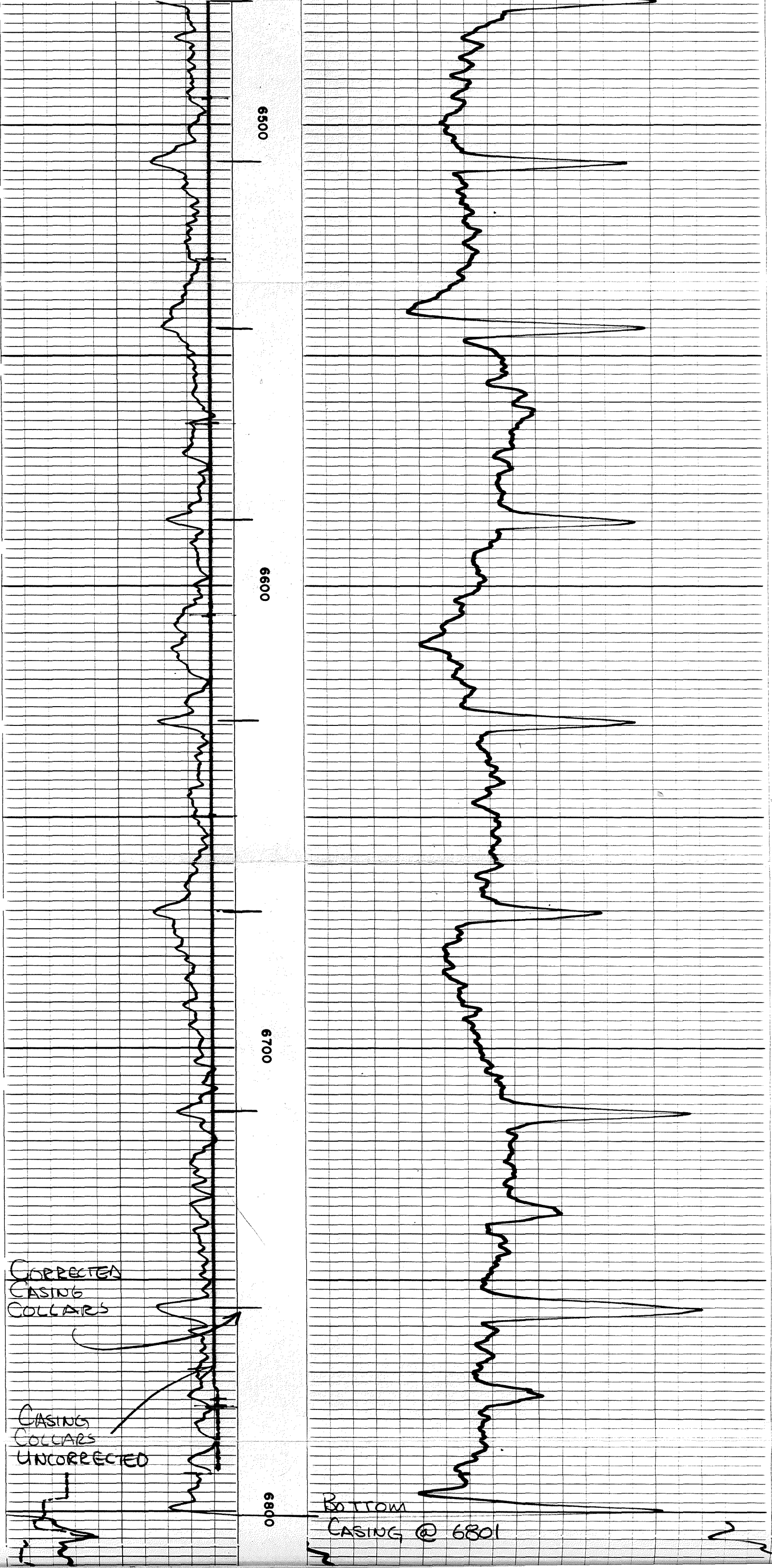


Gamma Ray









6500

6600

6700

6800

CORRECTED
CASING
COLLARS

CASING
COLLARS
UNCORRECTED

BOTTOM
CASING @ 6801

CASING
COLLARS
UNCORRECTED

6800

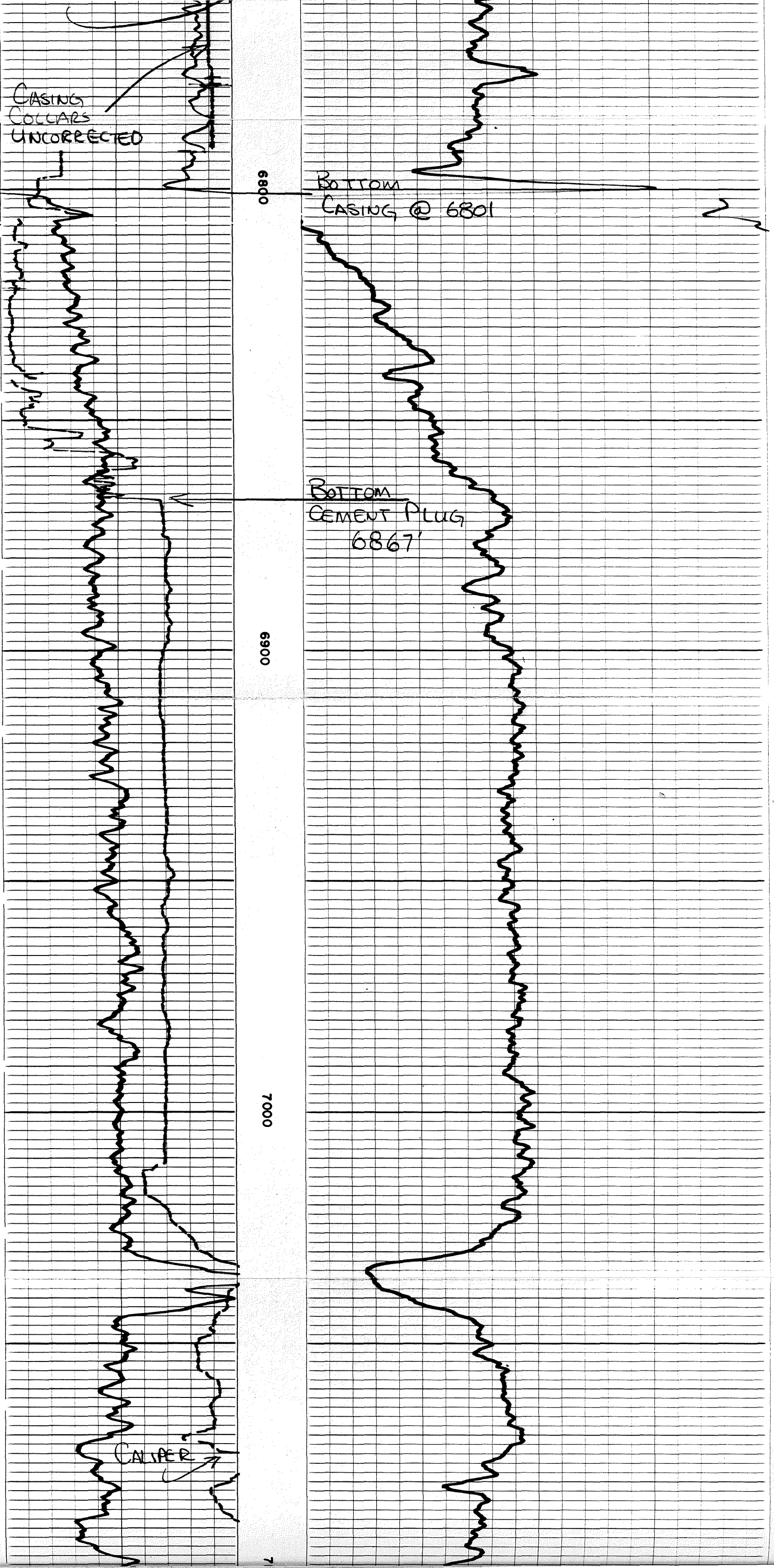
BOTTOM
CASING @ 6801

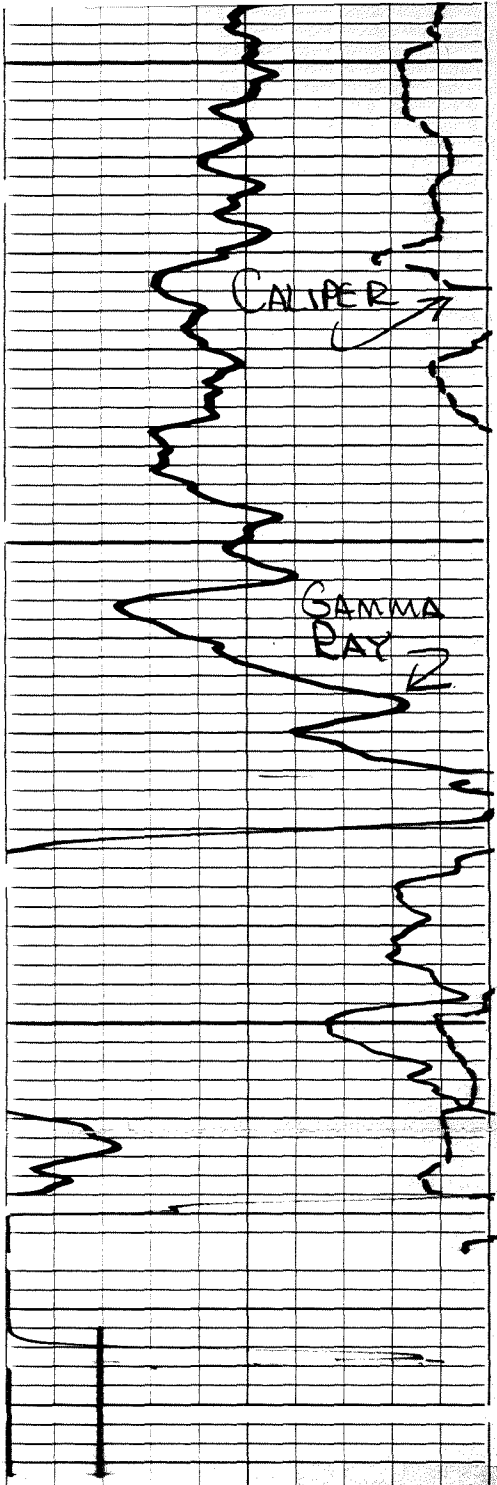
BOTTOM
CEMENT PLUG
6867'

6900

7000

CALIPER





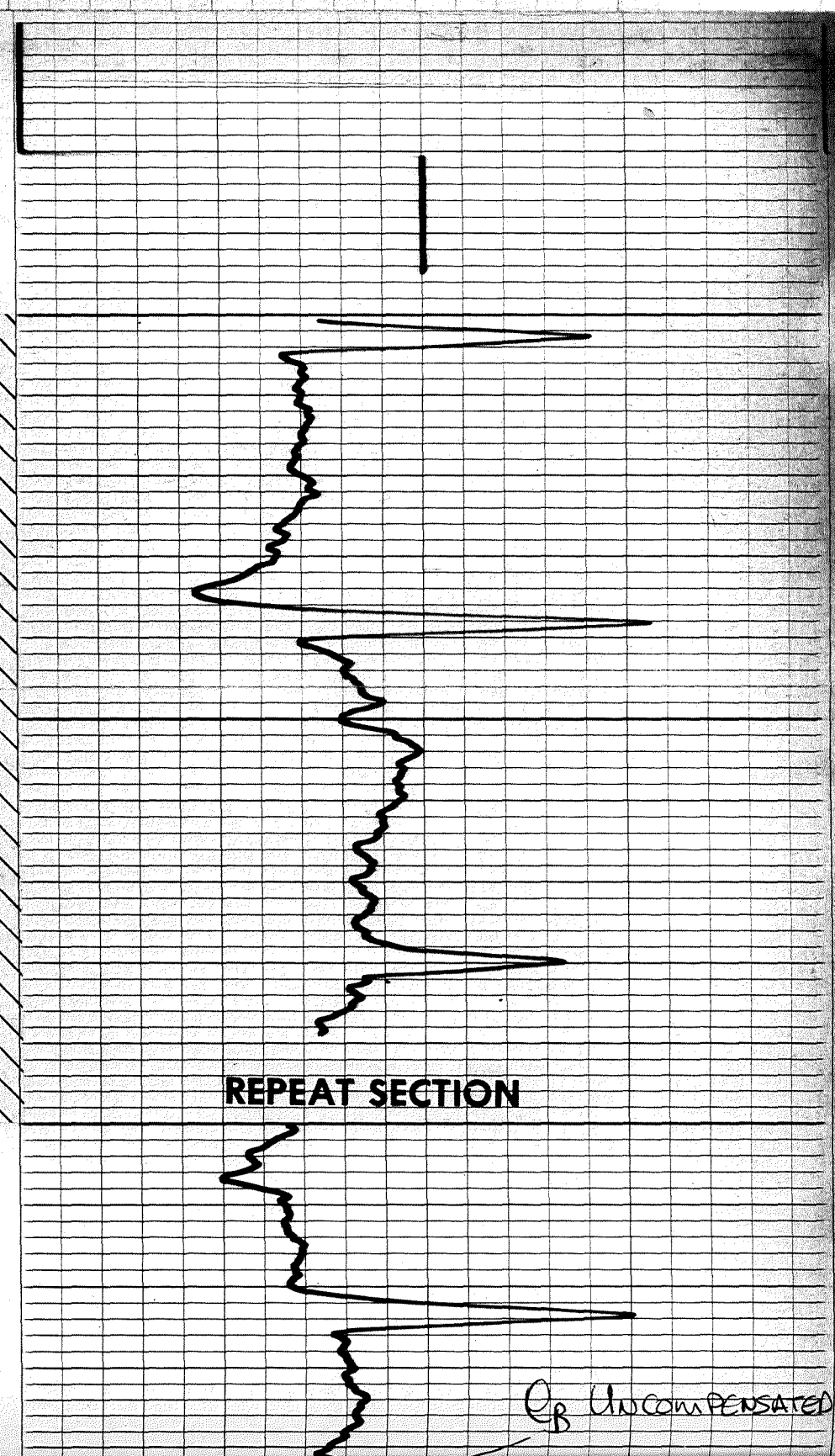
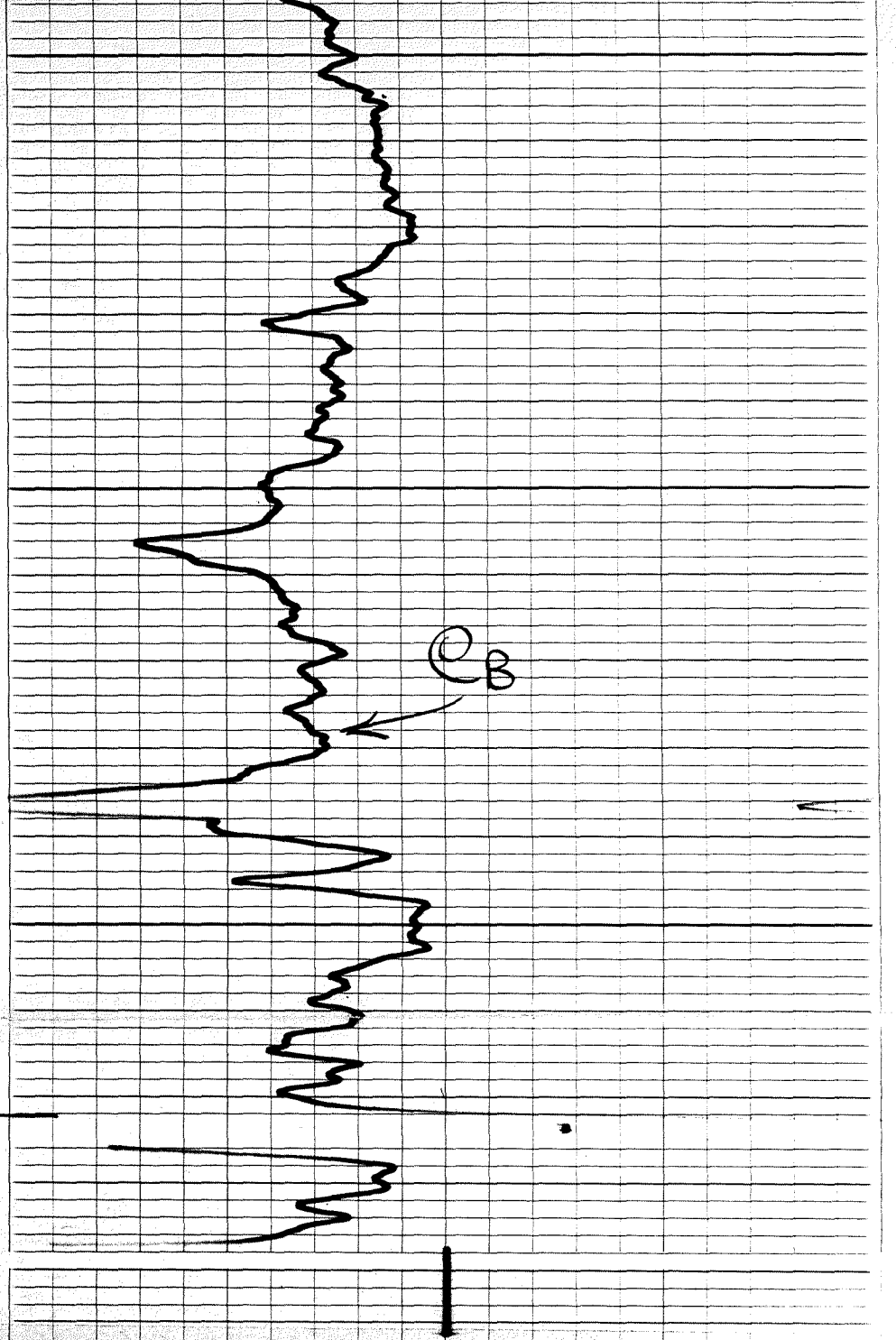
7100

FR

6500

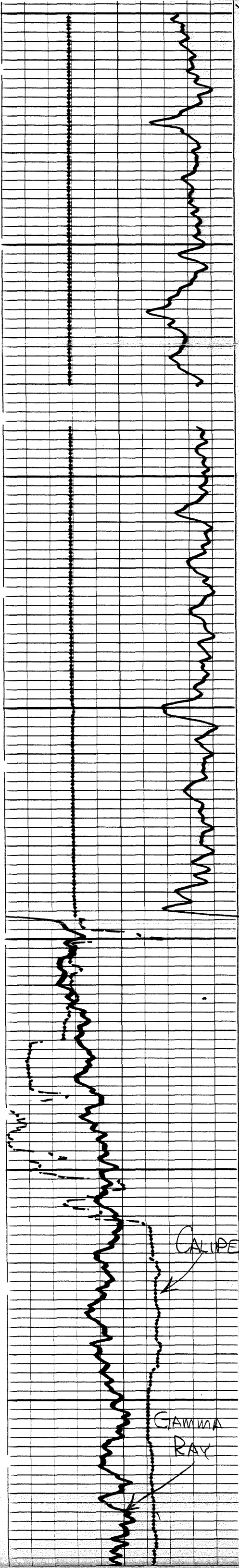
MEMORIZER OUT - CURVES INVALID

6600



REPEAT SECTION

CB UNCOMPENSATED

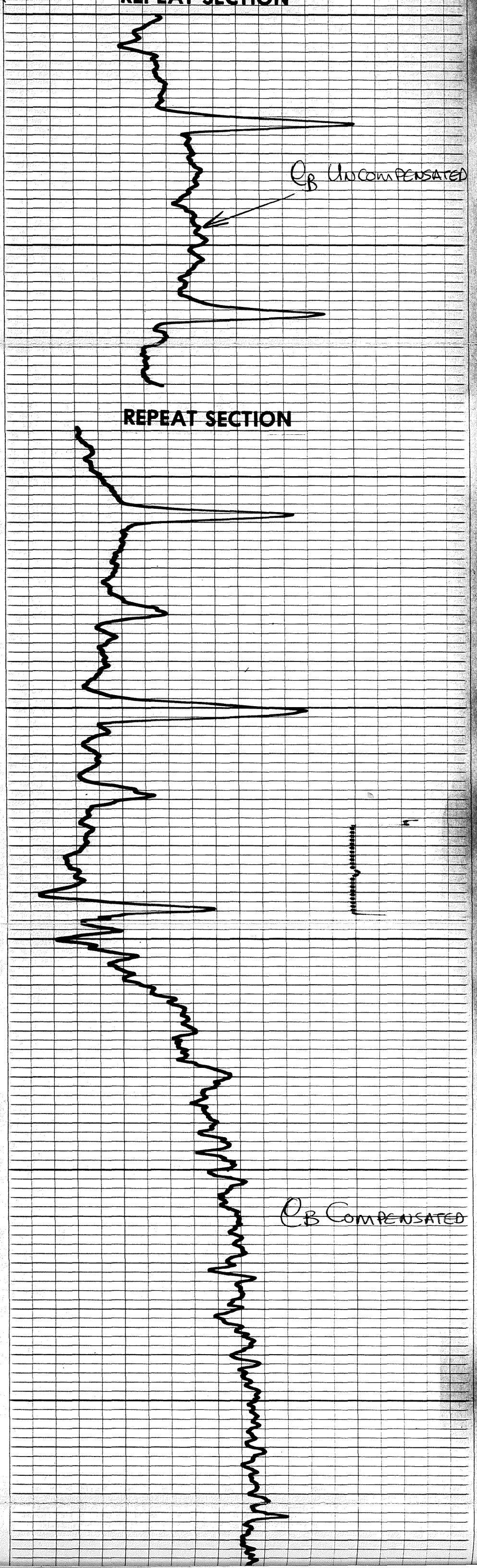


6800

6700

6800

6900

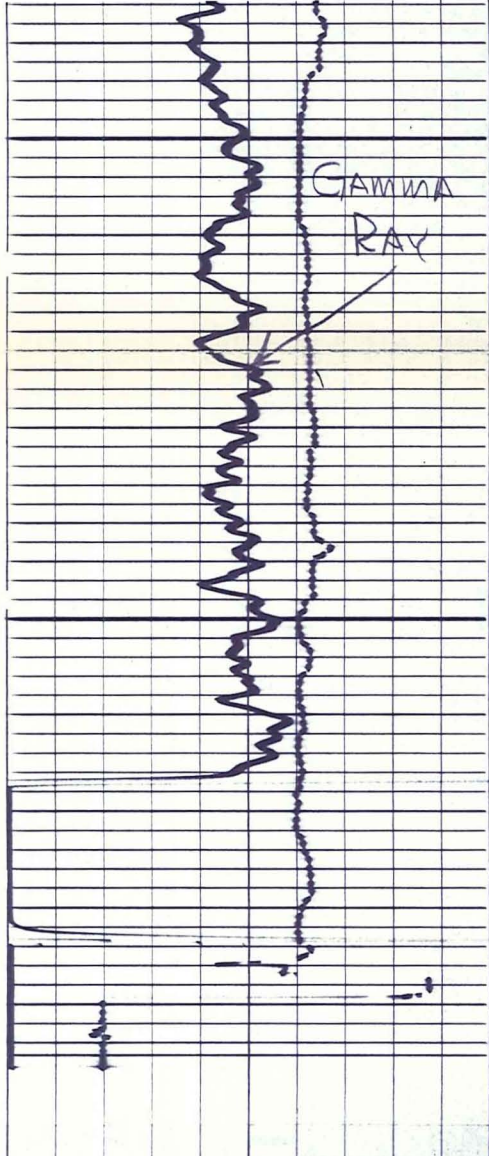


REPEAT SECTION

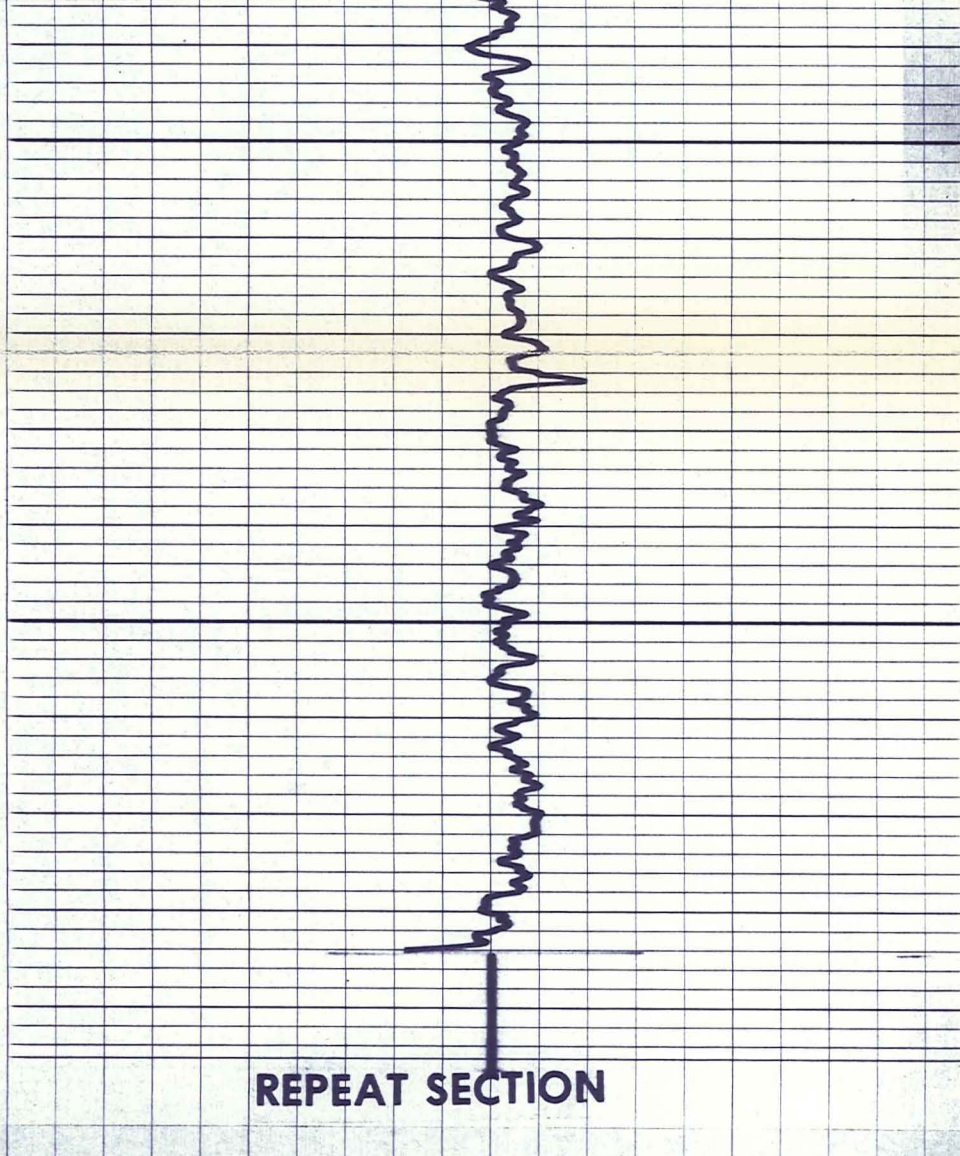
CB UNCOMPENSATED

REPEAT SECTION

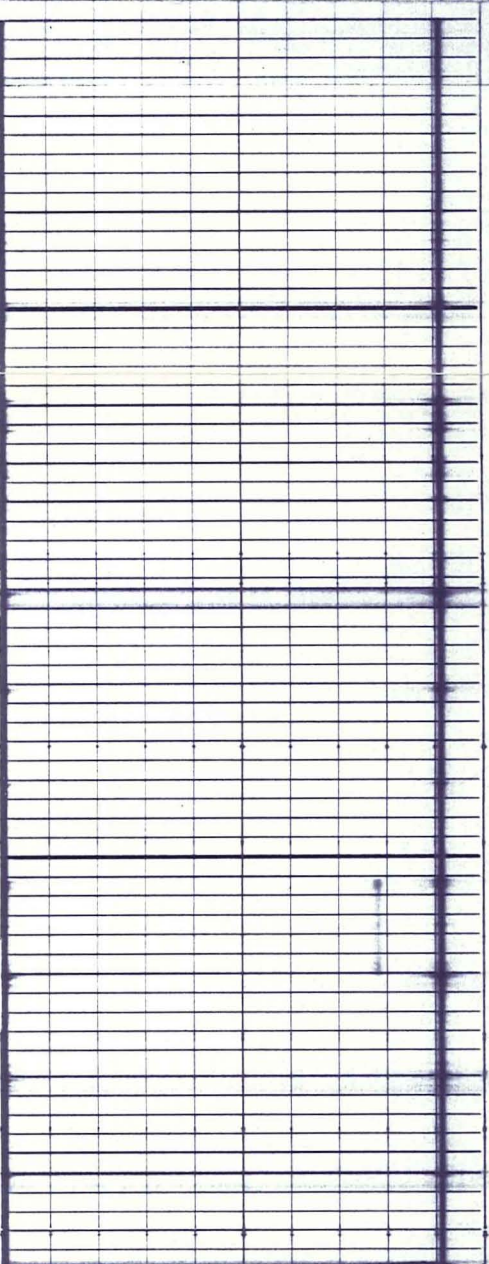
CB COMPENSATED



0069



REPEAT SECTION



12

11

10

9

8

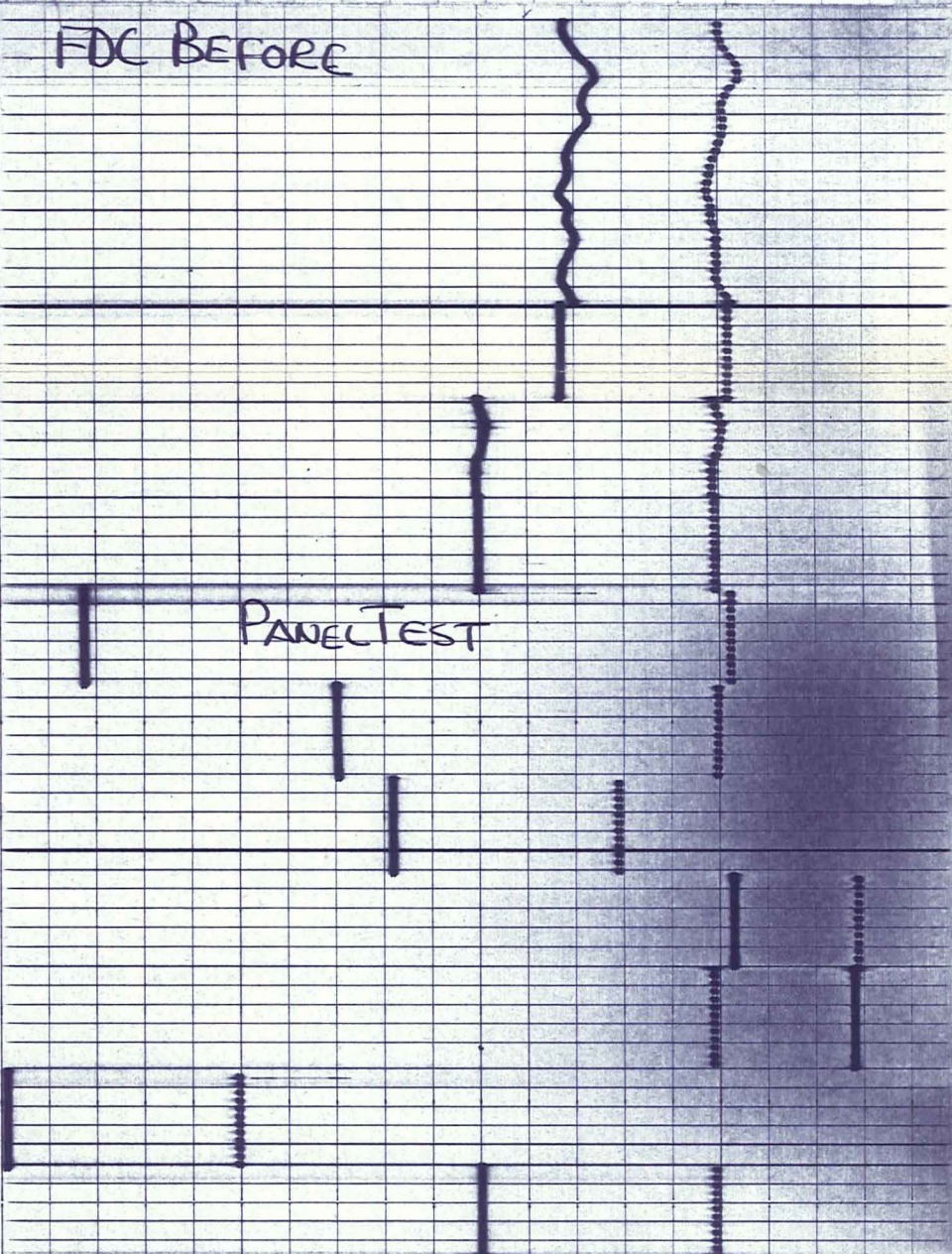
7

6

2

1

GAMMA RAY

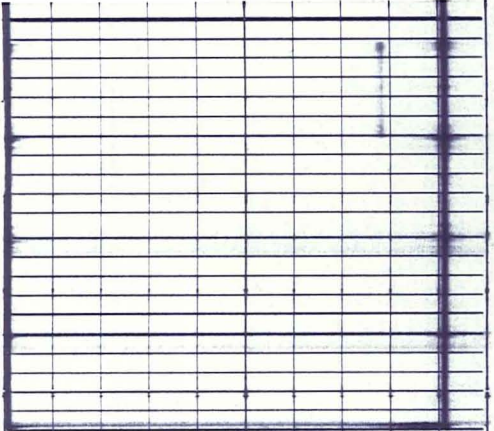


FDC BEFORE

PANEL TEST

6

5



7

6

2

1

GAMMA RAY

6

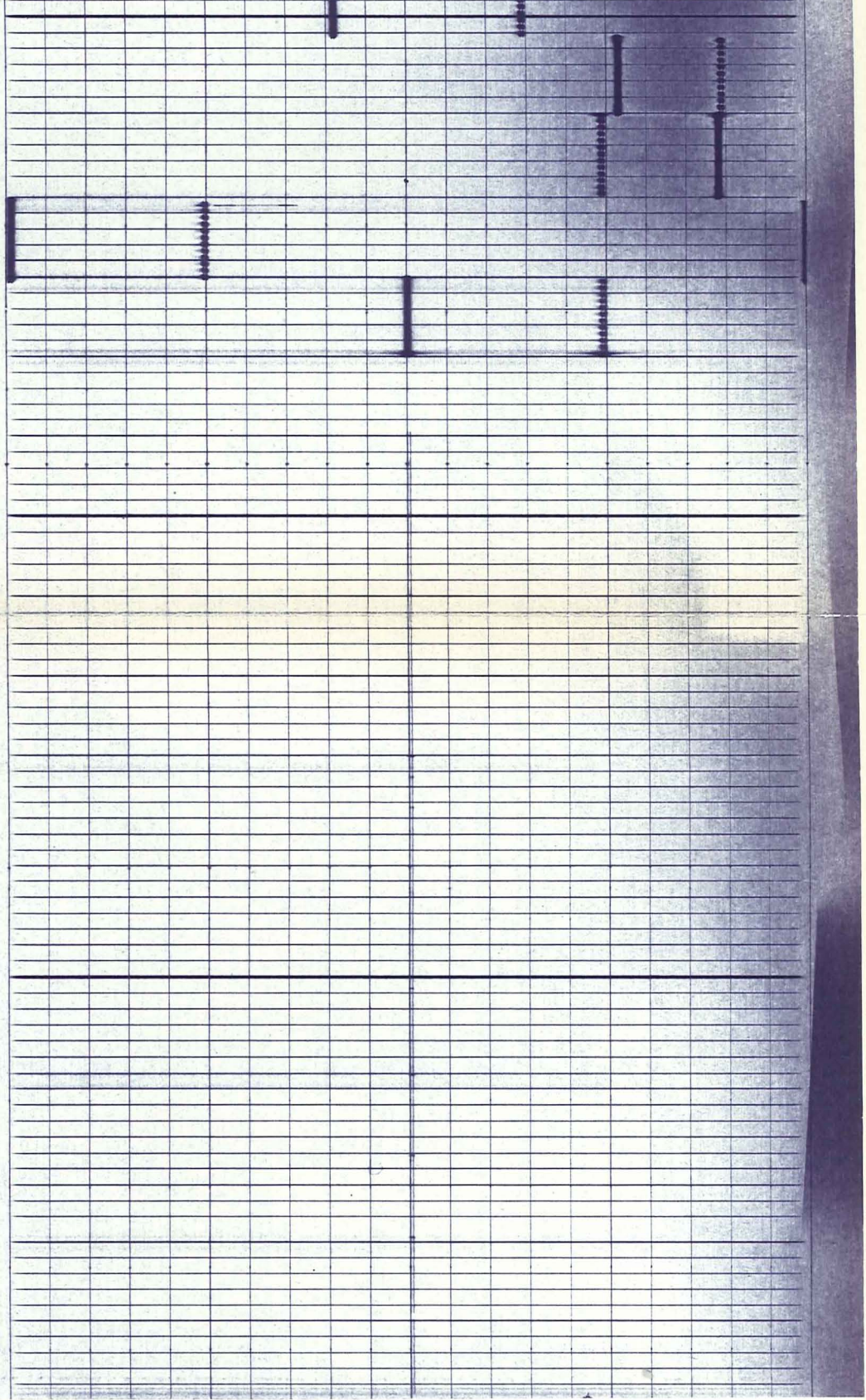
5

4

3

2

1




 G L 0 2 5 8 0
 FILE_CAB_15_DRAWER_1