

GL02582

Schlumberger

DUAL LATEROLOG

SIMULTANEOUS

COUNTY _____ FIELD _____ LOCATION _____ WELL _____ COMPANY _____
 COMPANY E.G. & G.
 WELL INEL #1
 FIELD WILDCAT
 COUNTY BUTTE STATE IDAHO

Permanent Datum: GL; Elev.: 4874.8
 Log Measured From GL 10 Ft. Above Perm. Datum
 Drilling Measured From GL

LOCATION: API SERIAL NO. _____ SEC. 1 TWP. 3N RANGE 29E
 Other Services: FIL-GR, HDT-GR, BHC-GR, FDC-CUL-GR

Date 5-19-79
 Run No. ONE
 Depth-Driller 10333
 Depth-Logger (Schl.) 10108
 Bim. Log Interval 10094
 Top Log Interval 8776
 Casing-Driller 133/8 @ 3559
 Casing-Logger NOT LOGGED
 Bit Size 12 1/4
 Type Fluid in Hole FRESH WATER
 Dens. _____ Visc. _____
 pH _____ Fluid Loss _____ ml _____ ml _____ ml
 Source of Sample MUDTANK
 Rm @ Meas. Temp. 7.5 @ 59 °F
 Rmf @ Meas. Temp. - @ - °F
 Rmc @ Meas. Temp. - @ - °F
 Source: Rmf _____ Rmc _____
 Rm @ BHT 1.75 @ 262 °F
 Circulation Stopped 0200 (5/8)
 Logger on Bottom 1630
 Max. Rec. Temp. 262 °F
 Equip. Location 8056 EUSTN
 Recorded By BRADLEY
 Witnessed By Mr. STRAWN

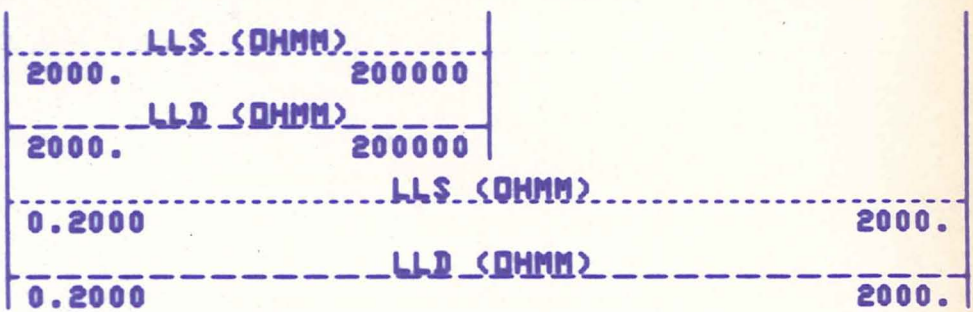
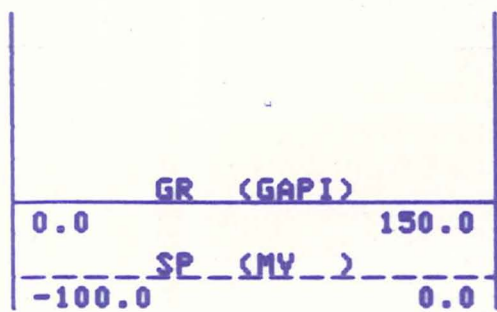
Elev.: K.B. 4895
 D.F. _____
 G.L. 4874.8

FOLD HERE The well name, location and borehole reference data were furnished by the customer.

Run No.		SCALE CHANGES	
Service Order No.	<u>74054</u>	Type Log	Depth
Fluid Level	<u>FULL</u>	Scale Up Hole	Scale Down Hole
Salinity, PPM CL.	<u>-</u>		
EQUIPMENT DATA		REMARKS	
Panel (DLP)	<u>DLM 738</u>		
Panel (SRP)	<u>-</u>		
Cartridge (DLC)	<u>900</u>		
Cartridge (SRE)	<u>900</u>		
Sonde (DLS)	<u>900</u>		
Sonde (SRS)	<u>-</u>		
Lower Electrode (DLE)	<u>889</u>		
Memorizer Panel	<u>CSU</u>		
Tape Recorder (TTR)	<u>CSU</u>		
Depth Encoder (DRE)	<u>CSU</u>		
Pressure Wheel (CPW)	<u>CSU</u>		
Centralizers:	Type		
Enter Spring,	No.		
Standoffs,	S. O. Inches		
In-line, or None			
CALIBRATION DATA			
GR	BKG. <u>APP1</u>	<u>56.21</u>	
	Source <u>APP1</u>	<u>211.30</u>	
LOGGING DATA			
GR	Sensitivity	<u>0-150</u>	
	Scale - 100 Div.	<u>150</u>	
	T. C. - sec	<u>AUTO</u>	
Speed FPM			
BOTTOM HOLE TEMPERATURE			
Time Entering Hole	<u>1600</u>		
Time Bottom Reached	<u>1630</u>		
Time Last Off Bottom	<u>1645</u>		
Time Out of Hole	<u>1800</u>		
Distance TD to Therm.	<u>34'</u>		
Thermometer #1	<u>262 °F</u>	°F	°F
Thermometer #2	°F	°F	°F
Thermometer #3	°F	°F	°F
Rw FROM DRILL STEM TEST			
DST #1 - Rw @ 100 °F	ΩM	ΩM	ΩM
DST #2 - Rw @ 100 °F	ΩM	ΩM	ΩM

All interpretations are opinions based on inferences from electrical or other measurements and we cannot, and do not guarantee the accuracy or correctness of any interpretations, and we shall not, except in the case of gross or willful negligence on our part, be liable or responsible for any loss, costs, damages or expenses incurred or sustained by anyone resulting from any interpretation made by any of our officers, agents or employees. These interpretations are also subject to Clause 4 of our General Terms and Conditions as set out in our current Price Schedule.

14



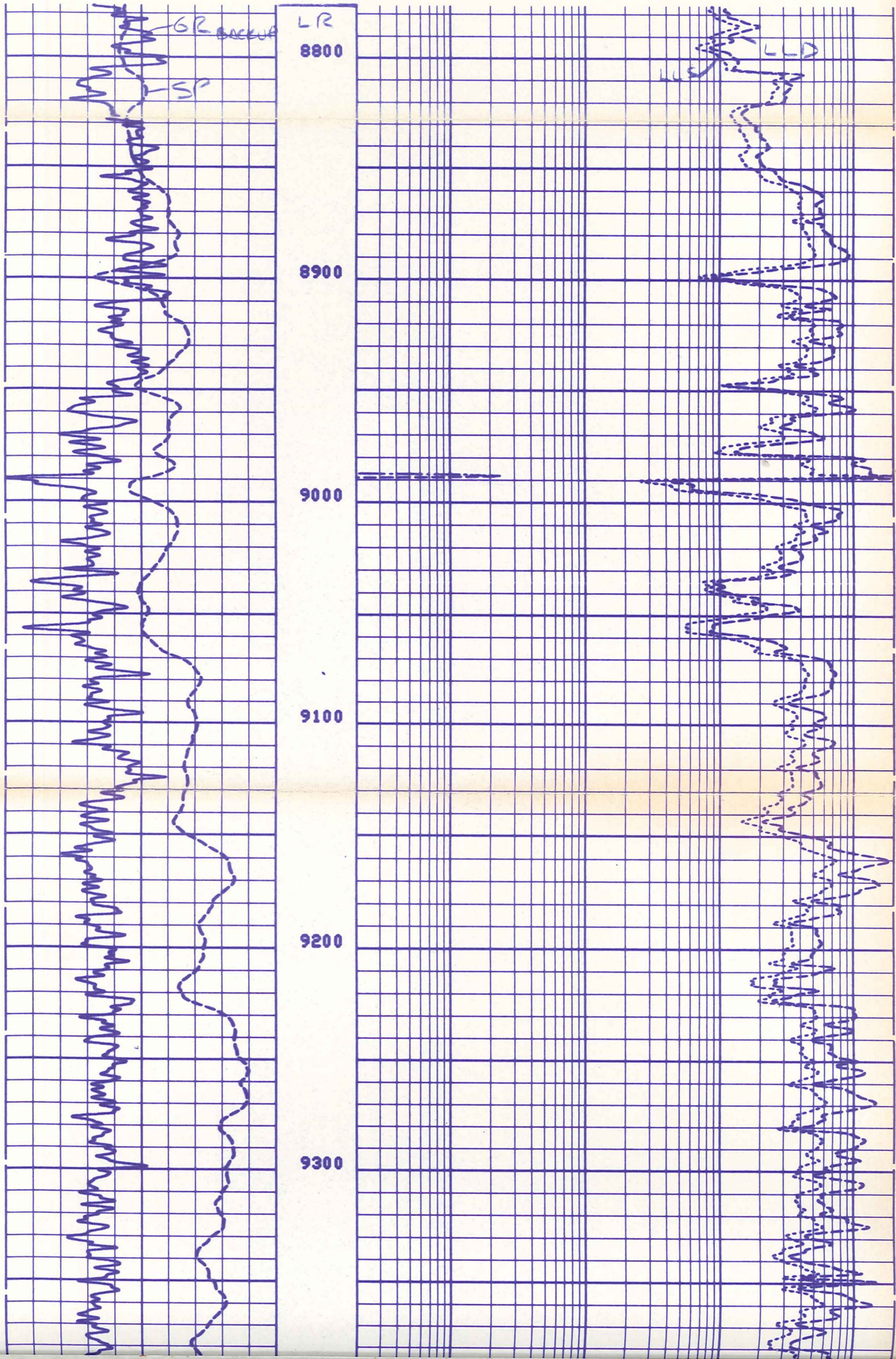
14
14
14
14

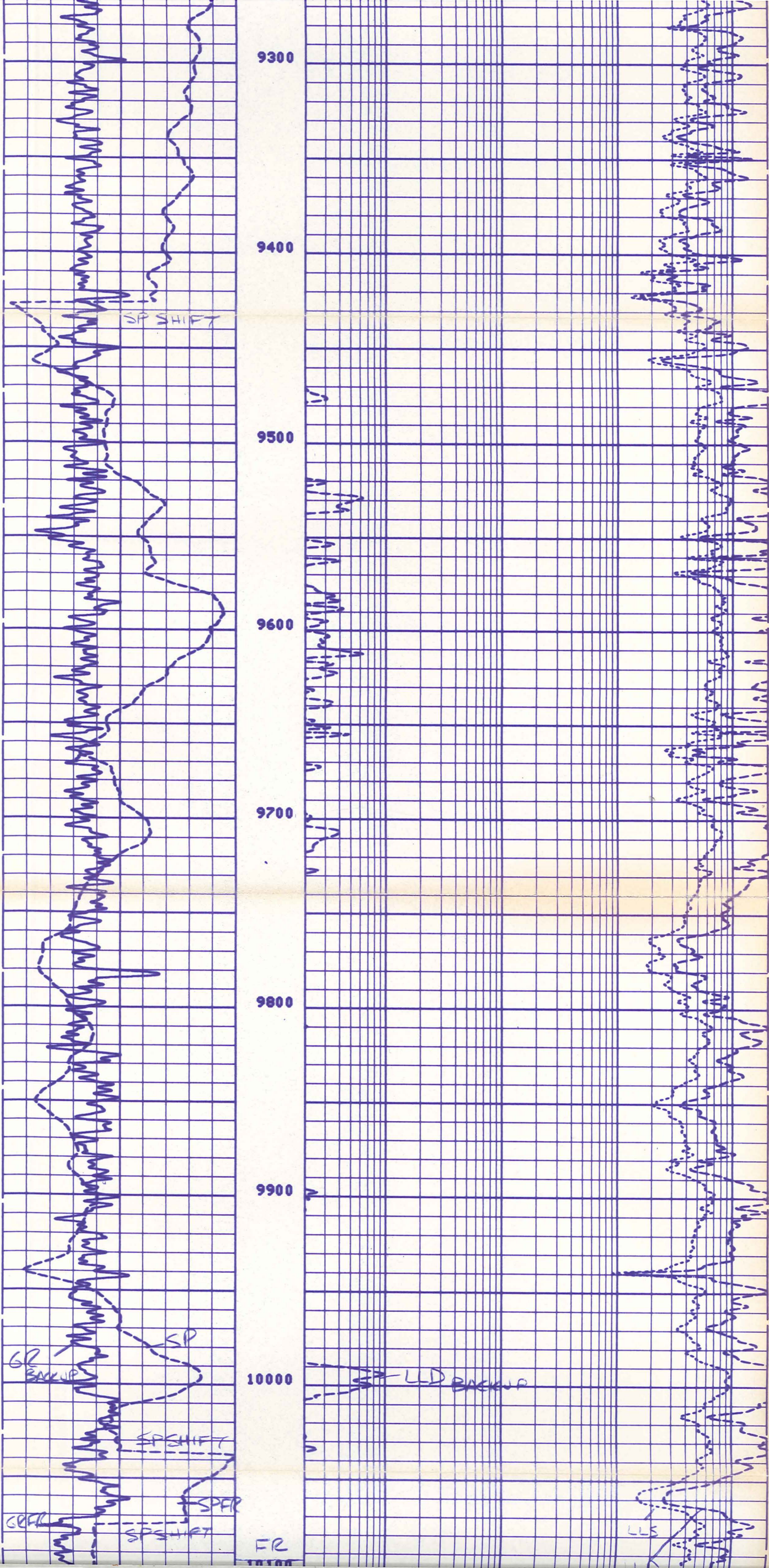
GR (GAPI)	
0.0	150.0
SP (MV)	
-100.0	0.0

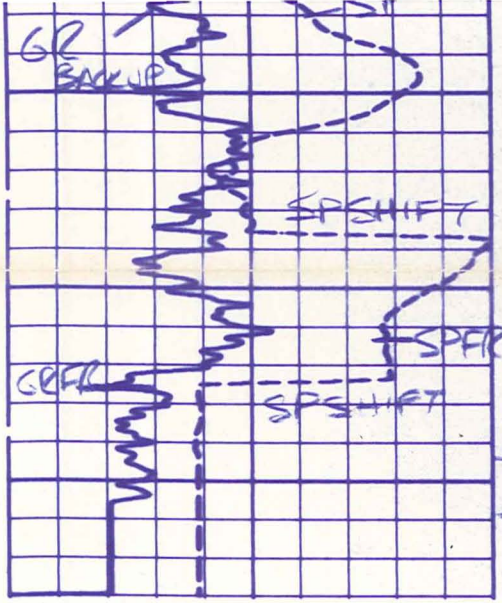
LLS (OHMM)	
2000.	200000
LLD (OHMM)	
2000.	200000
LLS (OHMM)	
0.2000	2000.
LLD (OHMM)	
0.2000	2000.

14
14
14
14
14
14

12
12
12
12
12
12



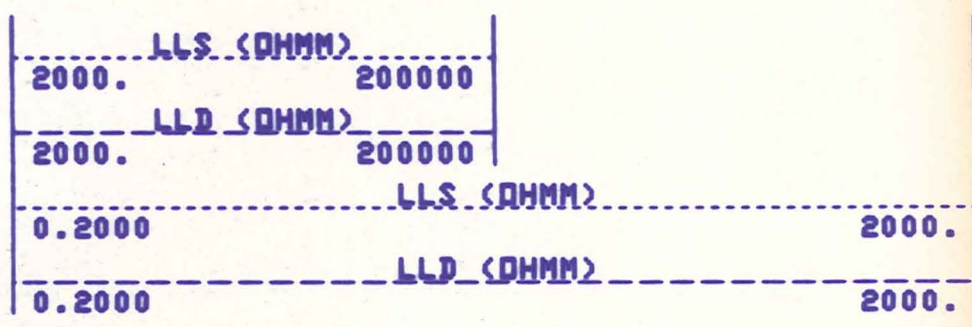
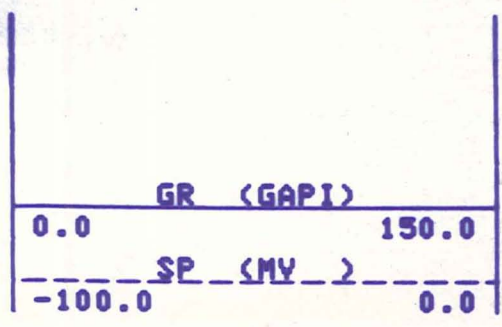




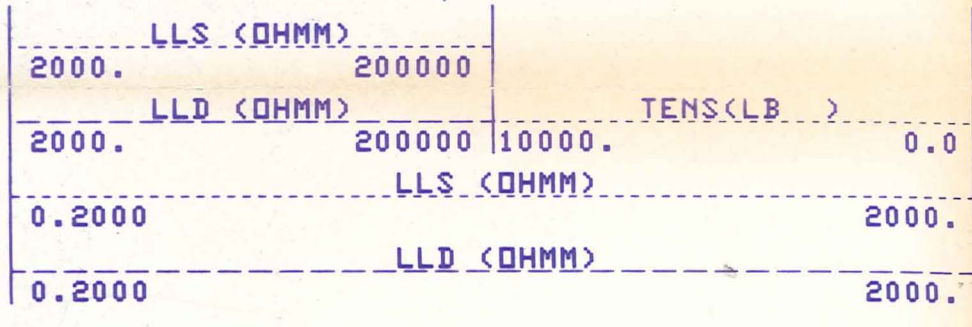
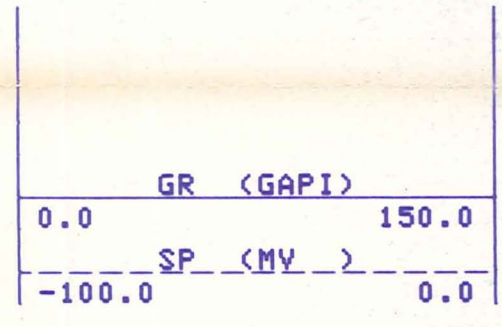
10000
FR
10100
TD



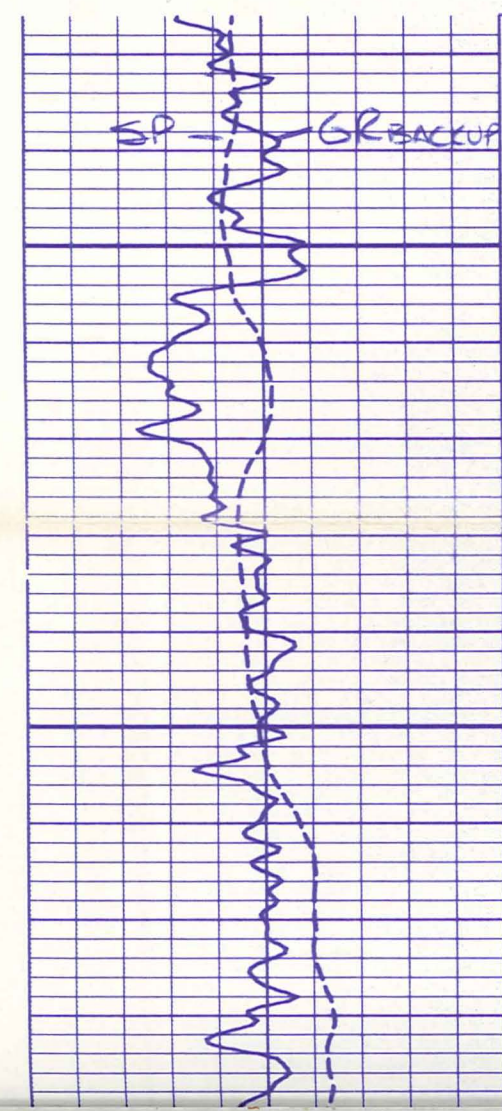
12
12
12
12
12
12



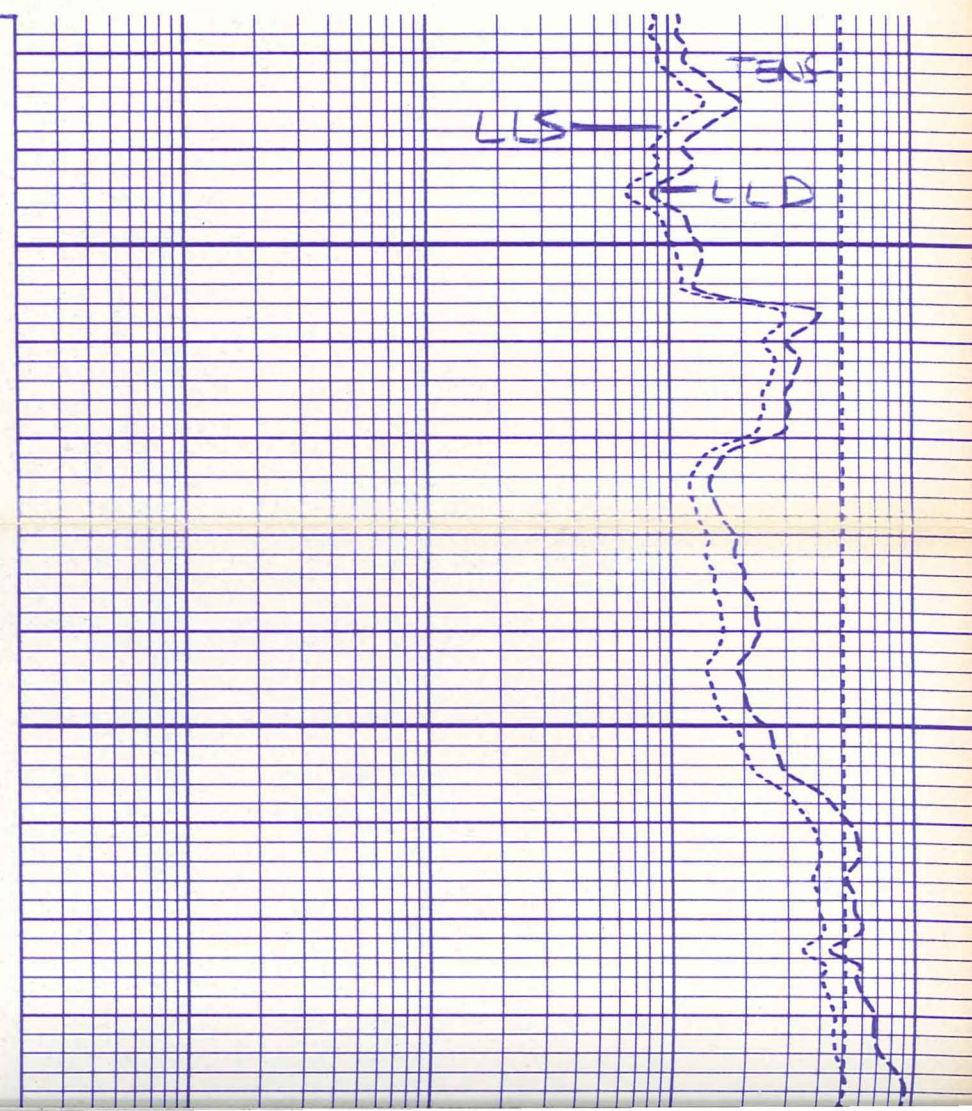
10
10
10
10
10
14

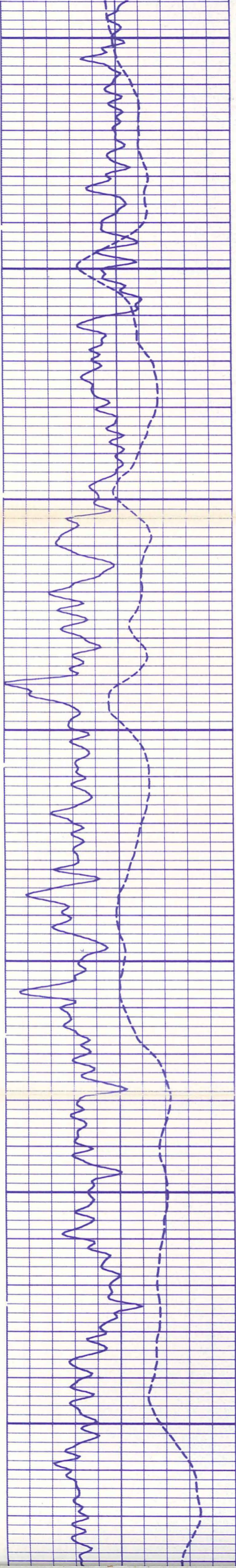


14
14
14
14
14
14
12
12
12
12
12
12

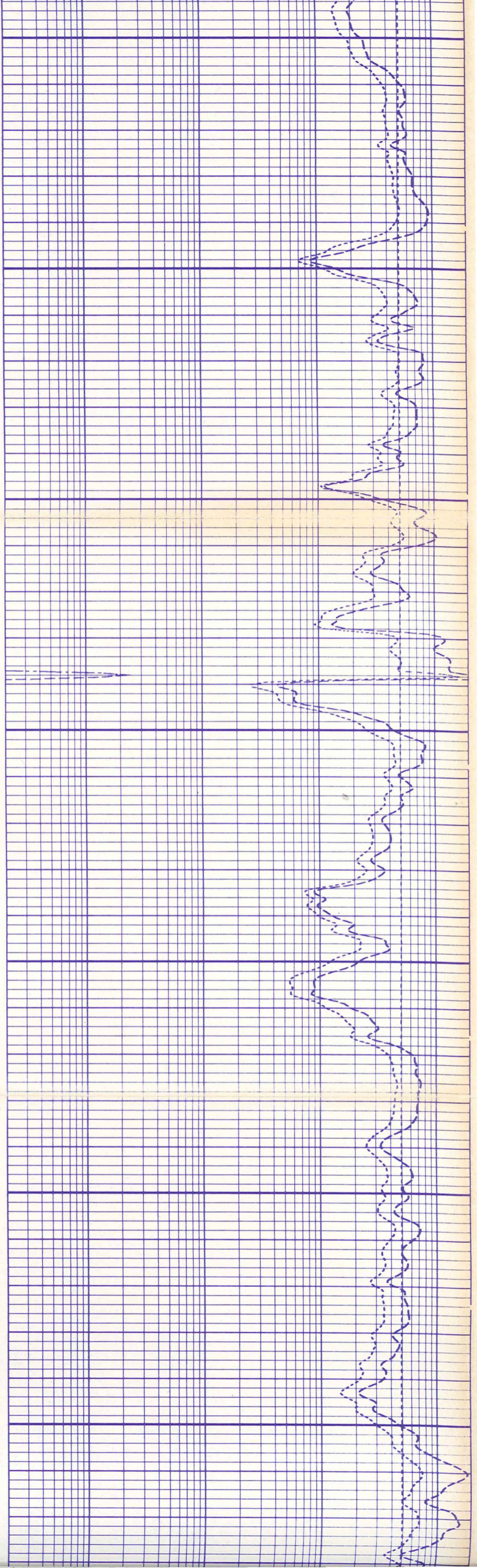


LR
8800



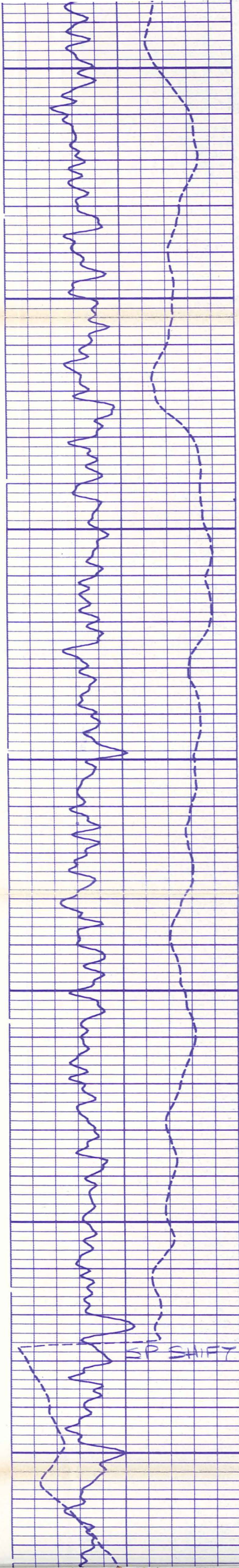


8900



9000

9100

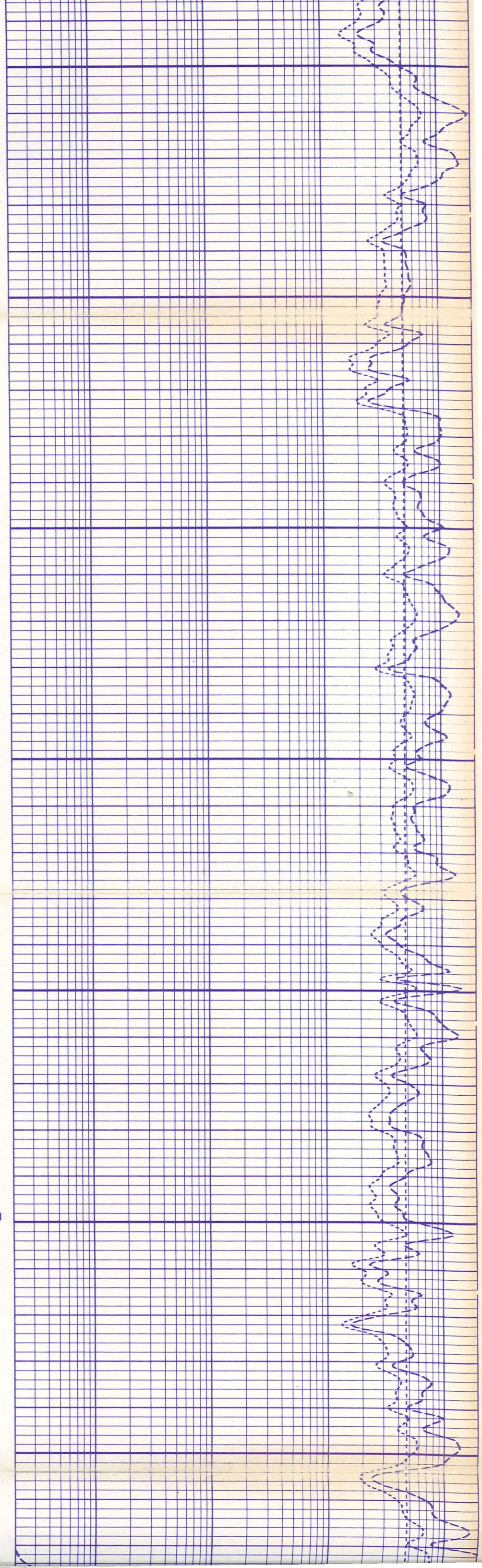


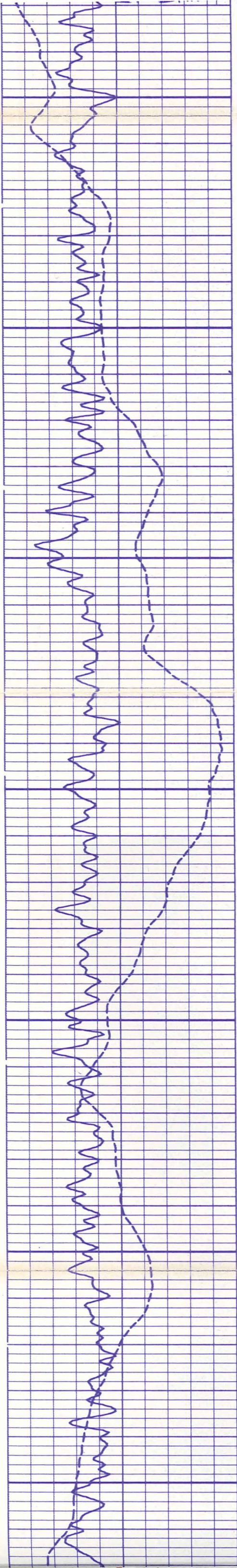
9200

9300

9400

SP SHIRT

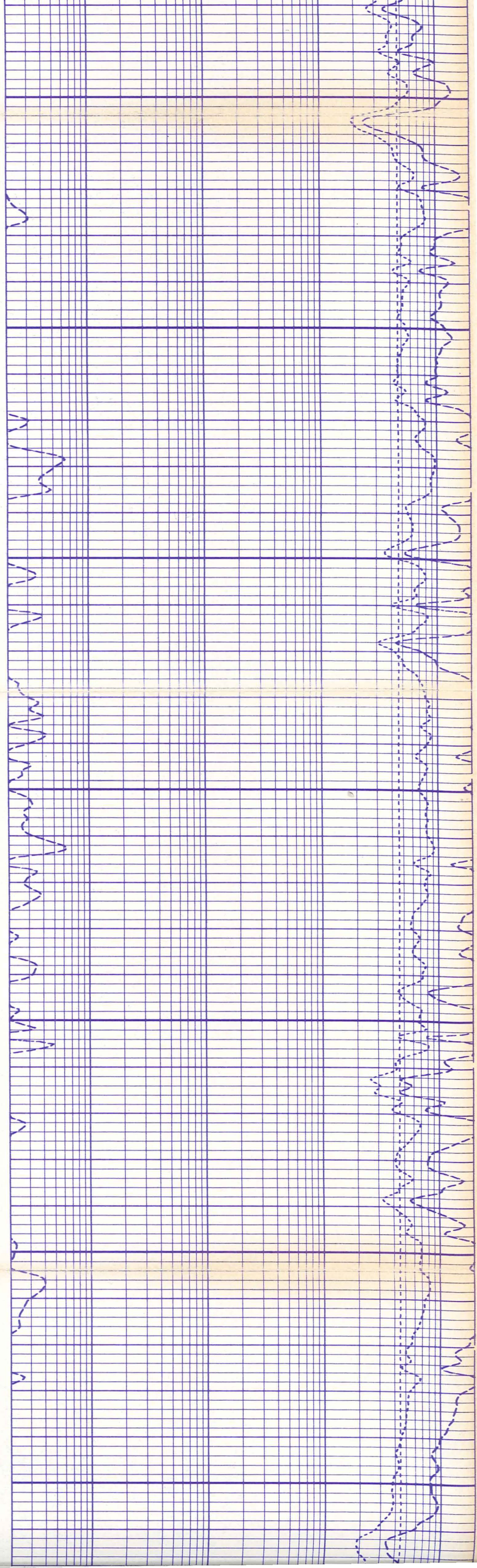


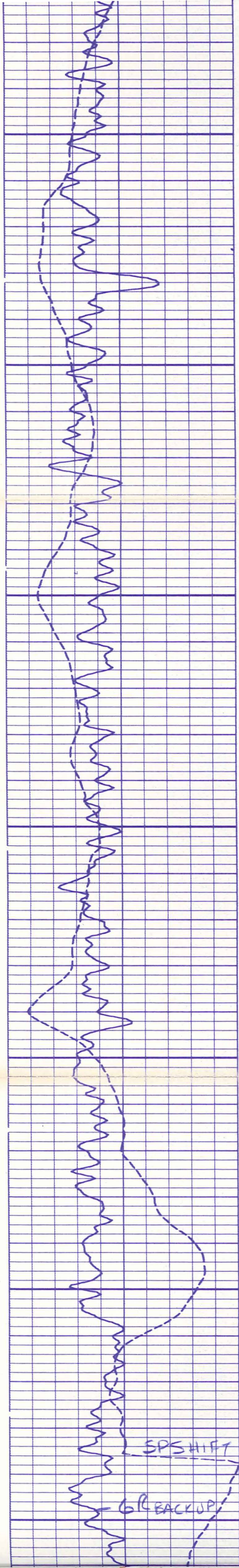


9500

9600

9700

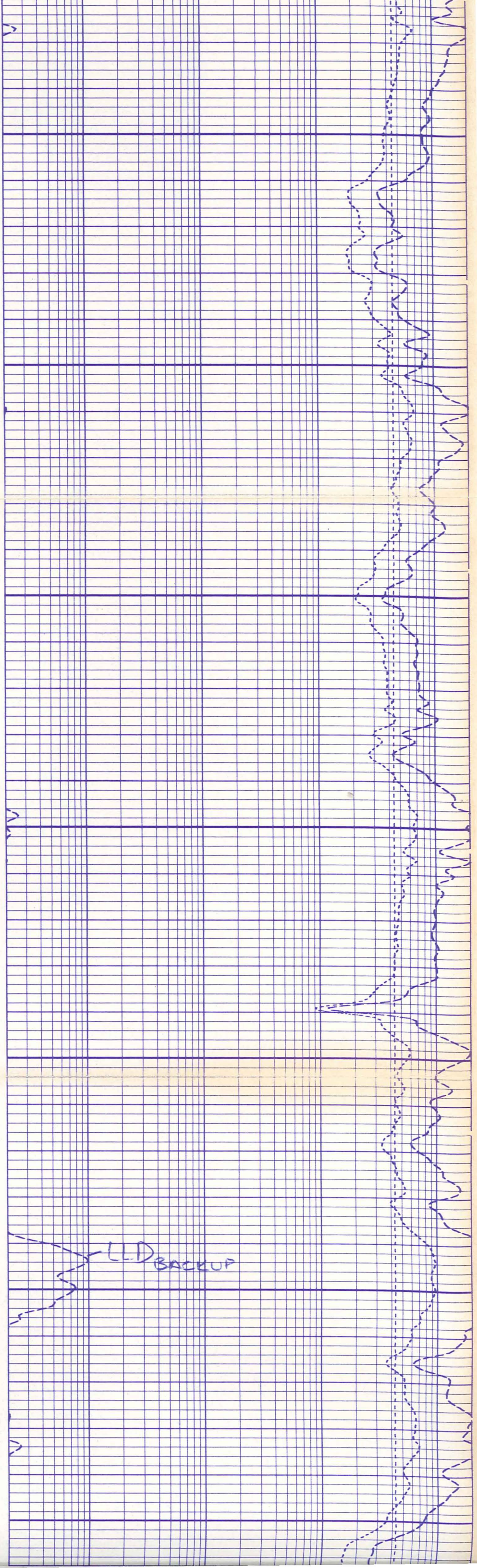




9800

9900

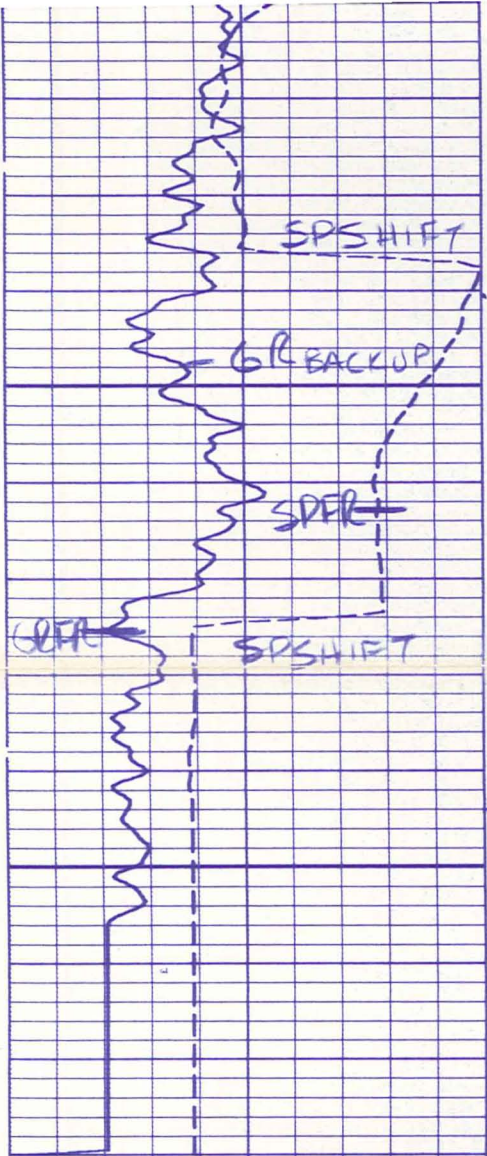
10000



SPS SHIFT

GR BACKUP

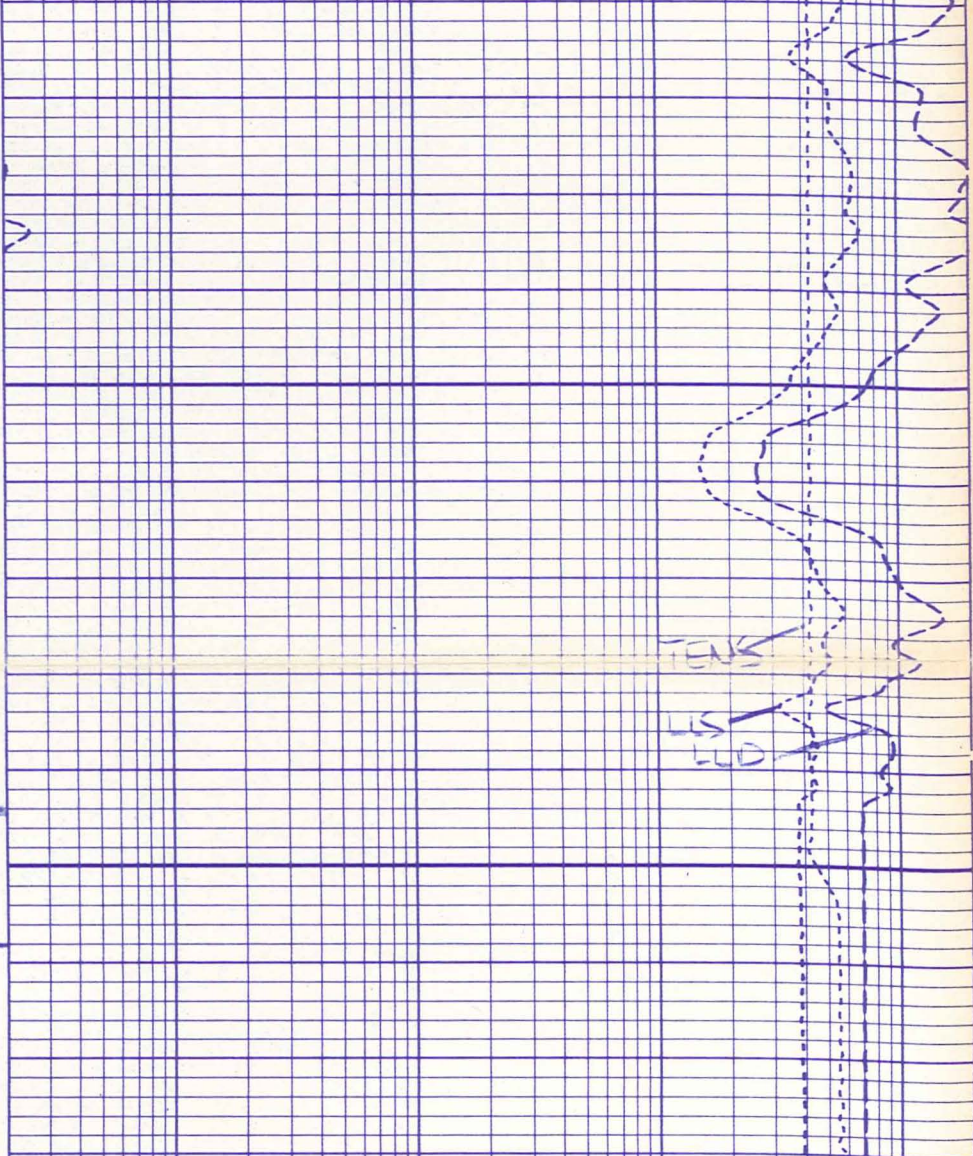
LLD BACKUP



FR

10100

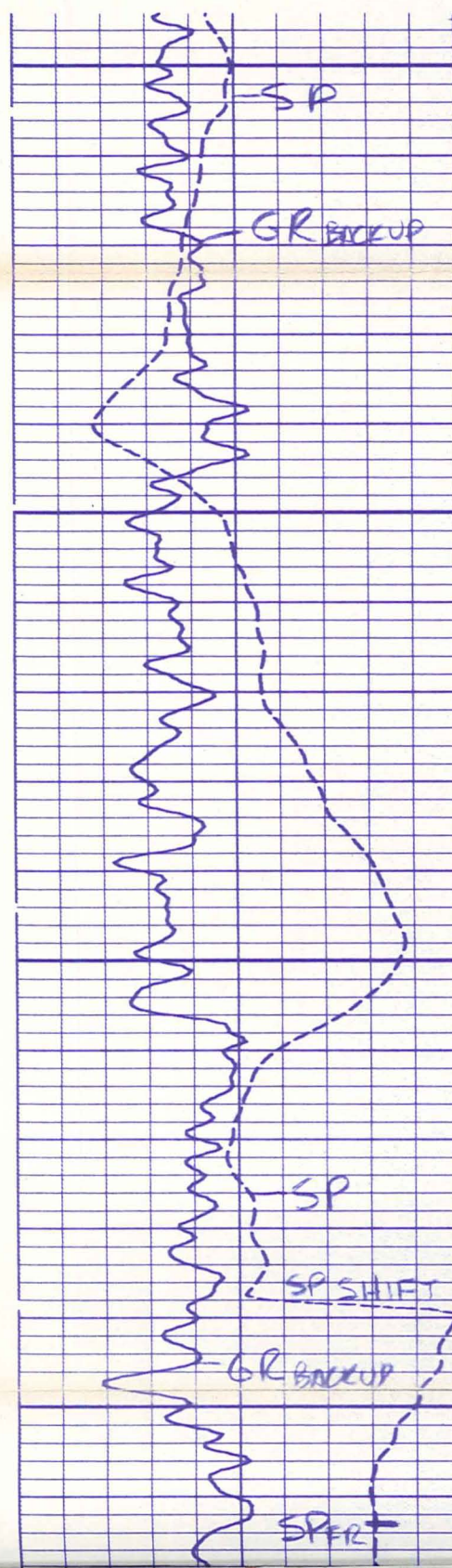
TD



12
12
12
12
12
12

11
11
11
11
11
11

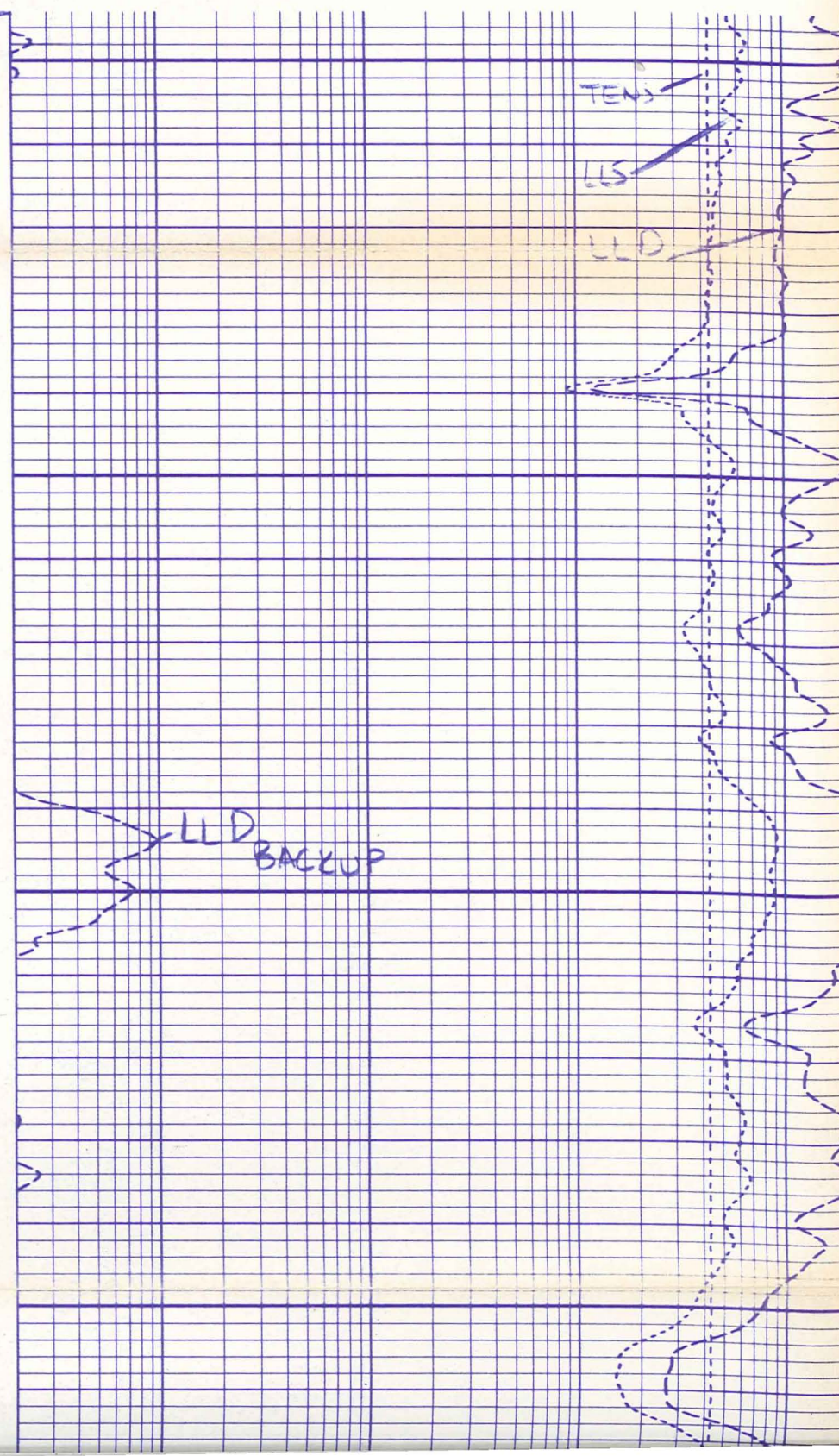
REPEAT SECTION

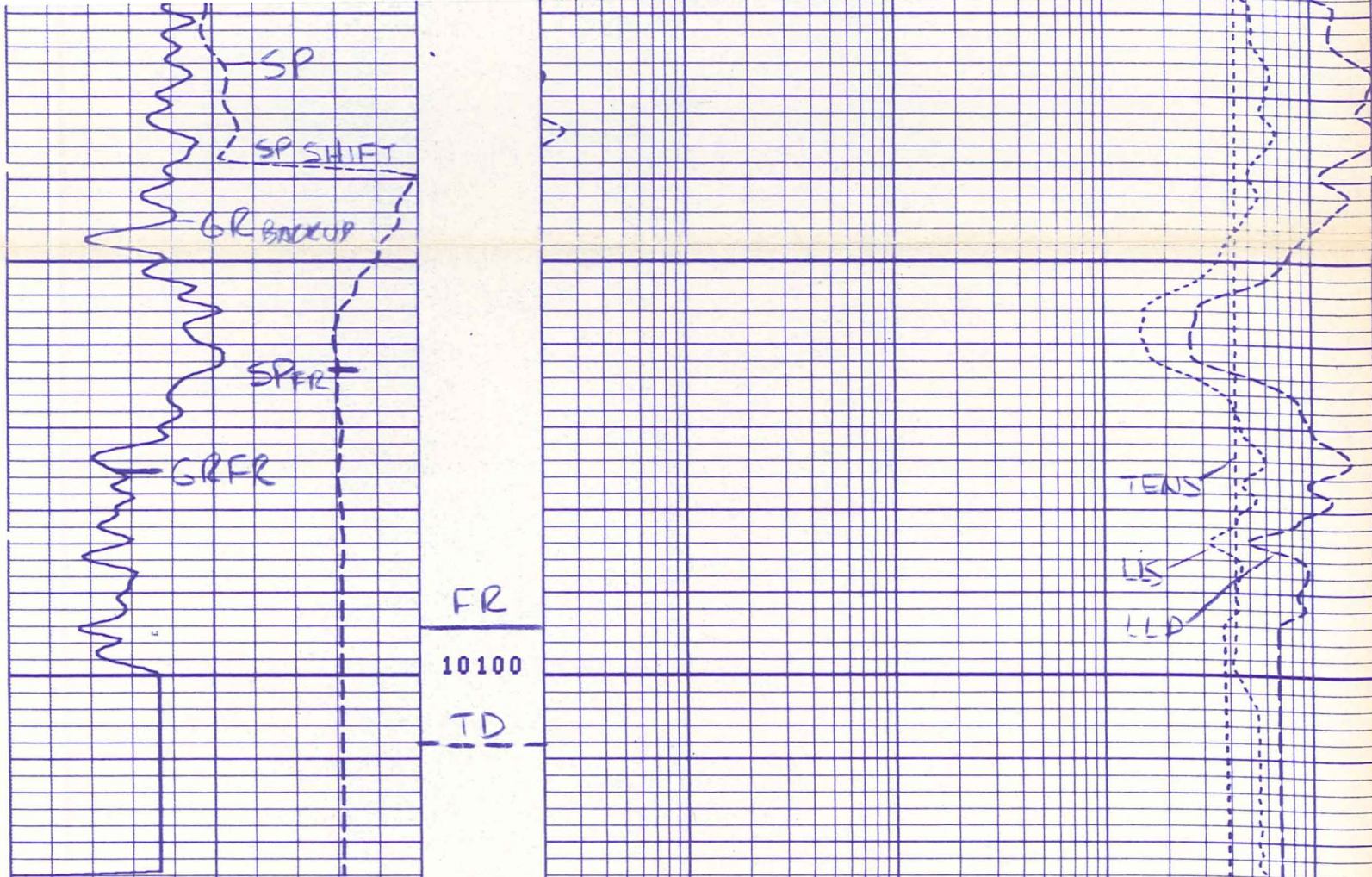


LR

9900

10000





11
11
11
11
11
11

REPEAT SECTION

	GR (GAPI)	
0.0	150.0	
	SP (MV)	
-100.0	0.0	

LLS (DHMM)	2000.	200000	
LLD (DHMM)	2000.	200000	TENS (LB) 0.0
	0.2000		LLS (DHMM) 2000.
	0.2000		LLD (DHMM) 2000.

10
10
10
10
10
10

BEFORE SURVEY CALIBRATION SUMMARY

PERFORMED: 79/05/19
PROGRAM FILE: MILL (VERSION 12.4A 78/12/ 8)

DLT ELECTRONICS CALIBRATION SUMMARY

	MEASURED		CALIBRATED		UNITS
	ZERO	PLUS	ZERO	PLUS	
LLD	0.0	36.5	0.0	31.6	DHMM
LLS	0.0	37.3	0.0	31.6	DHMM

SGTE DETECTOR CALIBRATION SUMMARY

	MEASURED		CALIBRATED	UNITS
	BKGD	JIG		
GR	56	211	164	GAPI

10
10
10
10
10
10

AFTER SURVEY TOOL CHECK SUMMARY

PERFORMED: 79/05/19
PROGRAM FILE: MILL (VERSION 12.4A 78/12/ 8)

DLT TOOL CHECK

	ZERO		PLUS		UNITS
	BEFORE	AFTER	BEFORE	AFTER	
LLD	0.0	0.0	31.6	31.7	DHMM
LLS	0.0	0.0	31.6	31.6	DHMM



GL02582
FILE_CAB_15_DRAWER 1