

GL02587

Schlumberger

4-ARM CALLIPER

COUNTY
FIELD
LOCATION
WELL
COMPANY

COMPANY E G & G
WELL INEL # 1
FIELD WILDCAT
COUNTY BUTTE STATE IDAHO
LOCATION
API SERIAL NO. 1 SEC. 1 TWP 3N RANGE 29E
Other Services:
TEMPERATURE
FDC/CNL/GR
BHC
DIL

Permanent Datum: GL; Elev.: 4874.86
Log Measured From GL Ft. Above Perm. Datum
Drilling Measured From GL Elev.: 4895
D.F. G.14874.86

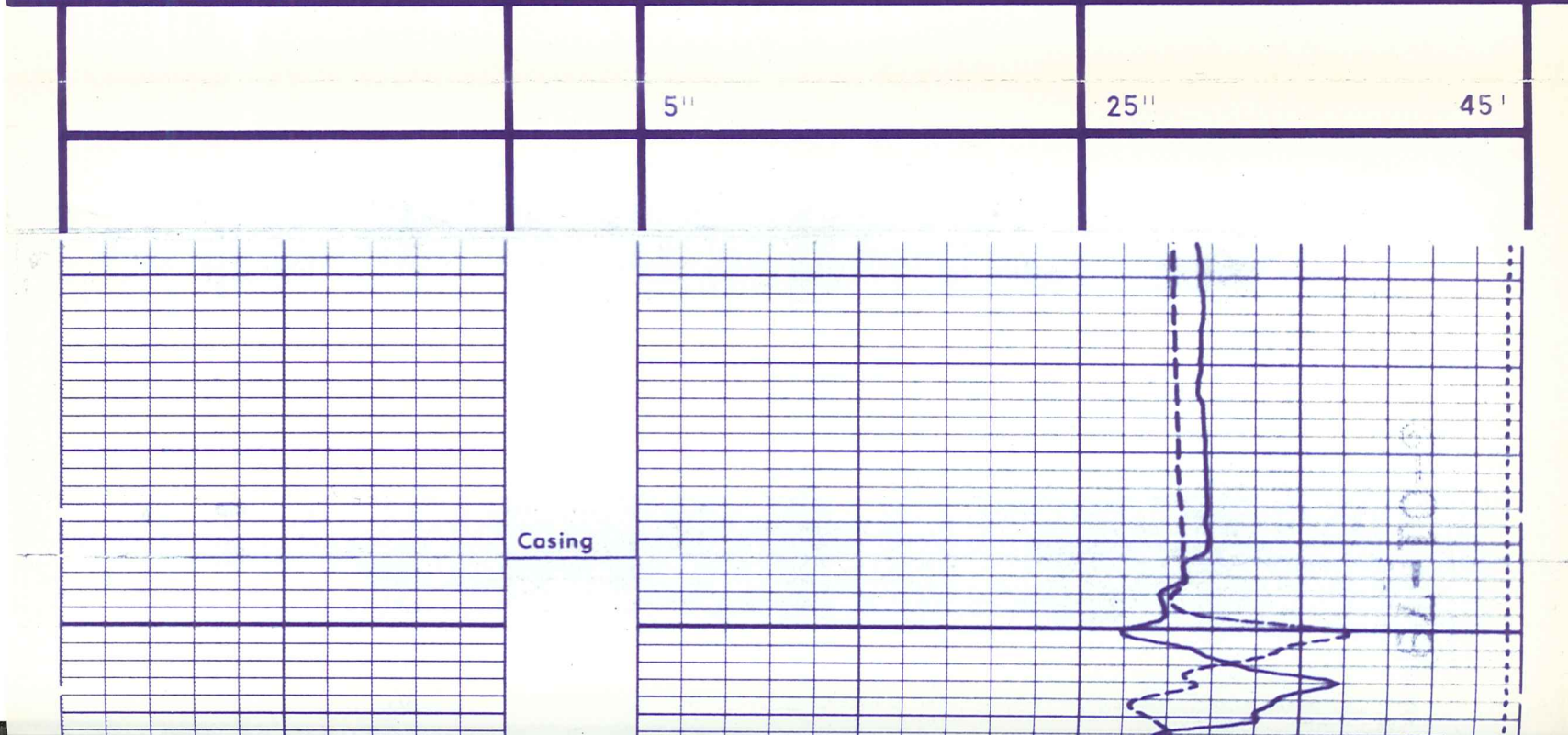
Date	3/3/79	3/27/79	
Run No.	ONE	TWO	
Depth-Driller	1524	3555 (STRAP)	
Depth-Logger (Schl.)	1491	3553	
Btm. Log Interval	1490	3552	
Top Log Interval	0	1462	
Casing-Driller	30" @ 40'	20 @ 1511	@
Casing-Logger	42	1512	
Bit Size	26"	17.50	
Type Fluid in Hole	EGM	LSND	
Dens. Visc.	8.5 50	8.8 57	
pH Fluid Loss		8.0 13.6ml	ml
Source of Sample	MUDTANK	MUD TANK	
Rm @ Meas. Temp.	6.07 @ 45 °F	8.75 @ 70 °F	@ °F
Rmf @ Meas. Temp.	5.77 @ 75 °F	8.94 @ 59 °F	@ °F
Rmc @ Meas. Temp.	9.11 @ 45 °F	12.86 @ 70 °F	@ °F
Source: Rmf Rmc	M C	M C	
Rm @ BHT	4.34 @ 63 °F	5.22 @ 116 °F	@ °F
Circulation Stopped	3/3 @ 1500	3/27 @ 0130	
Logger on Bottom	3/3 @	3/27 @ 2000	
Max. Rec. Temp.	63 °F	119 °F	°F
Equip. Location	8073 EVSTN	8060 EVSTN	
Recorded By	RAIVO	ROONEY	
Witnessed By Mr.	T. E. NEWMAN	STRAWN/NELSON	

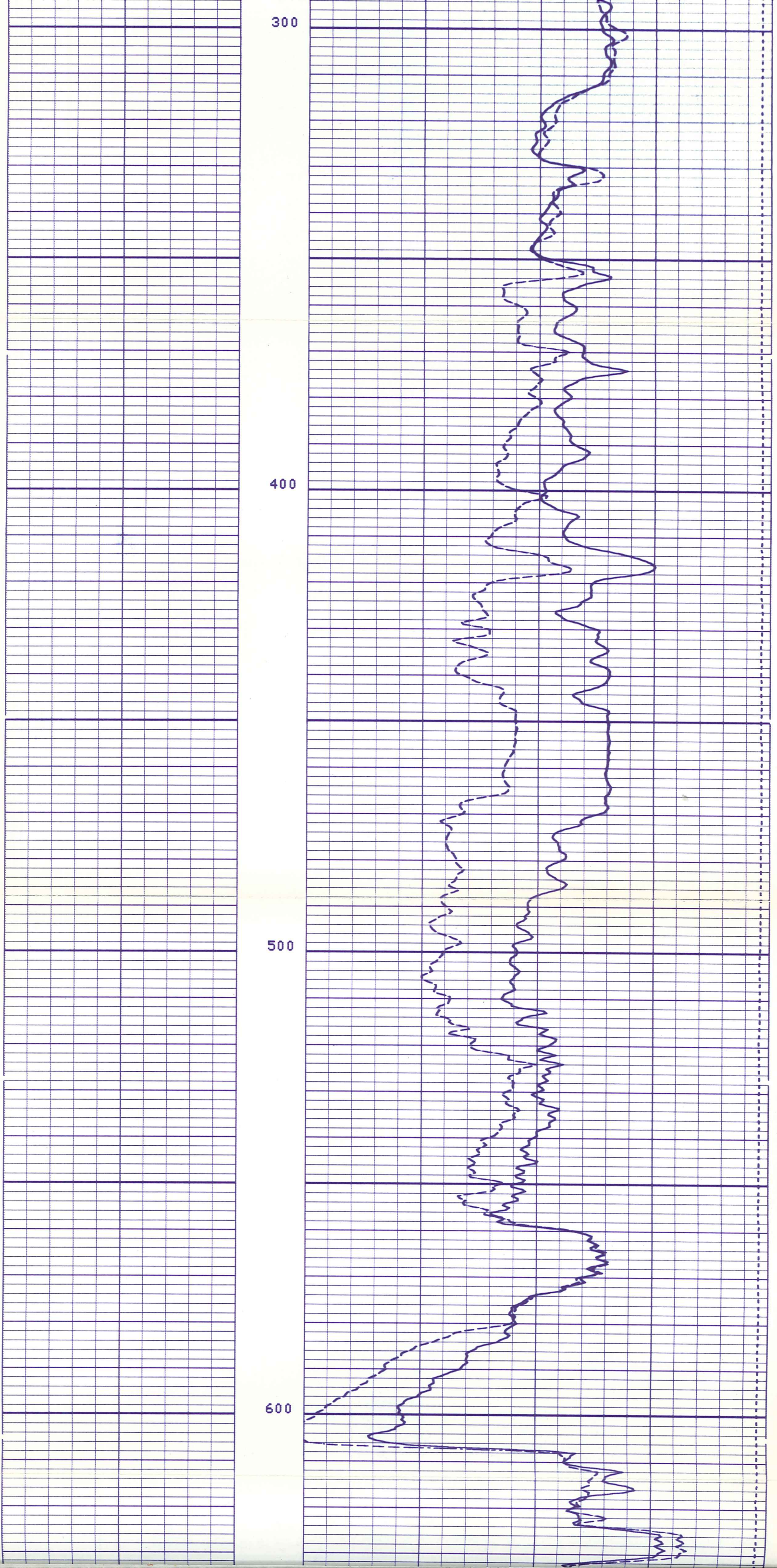
FOLD HERE The well name, location and borehole reference data were furnished by the customer.

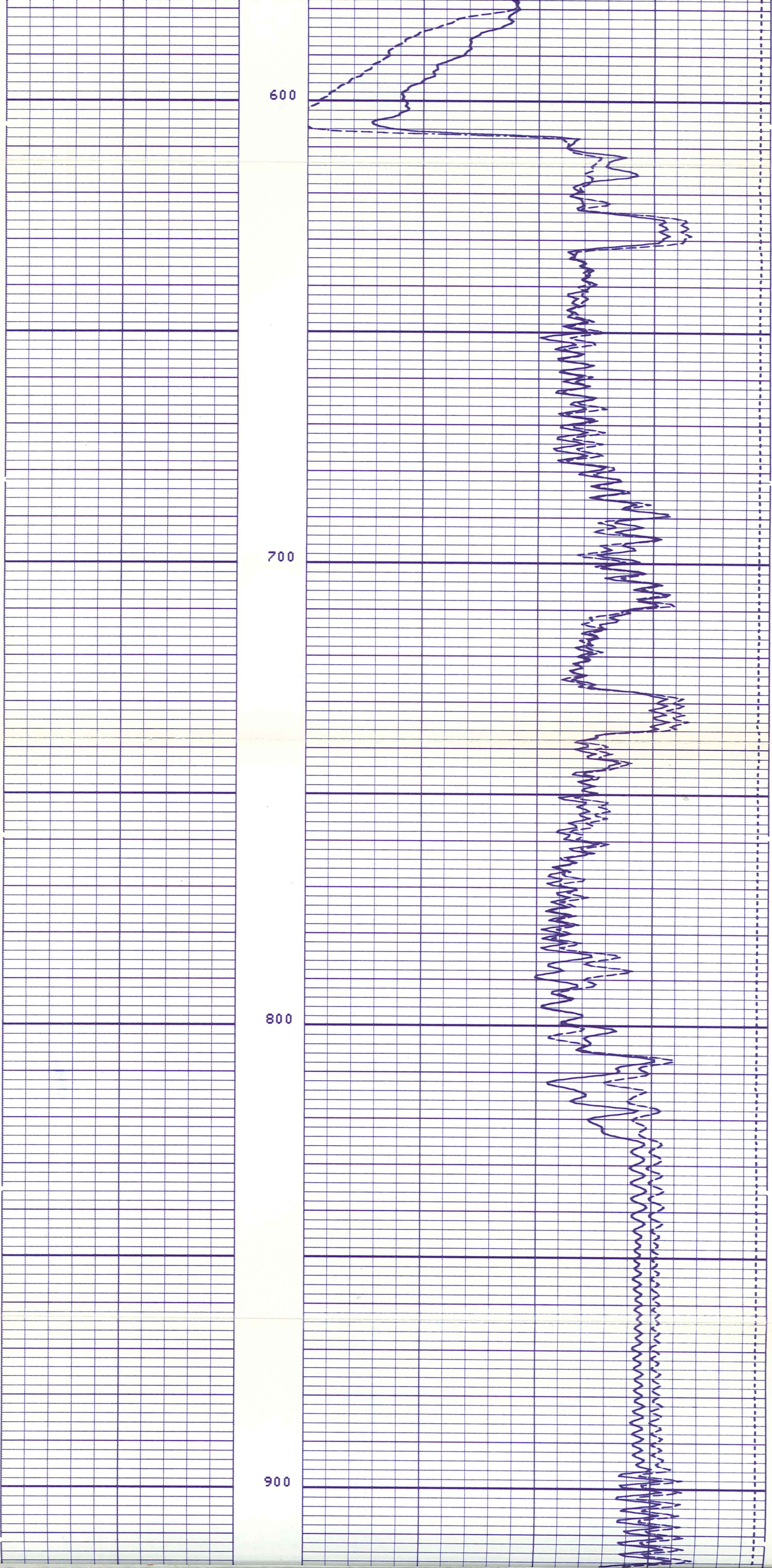
Run No.	ONE	TWO			
Service Order No.	73963	40303			
API Serial No.					
Fluid Level	FULL	FULL			
EQUIPMENT DATA			BGT		
			CSU 8060		
CALIBRATION DATA			60		
Speed - F.P.M.					
GR	BKG. CPS				
	Source CPS				
	Tc				

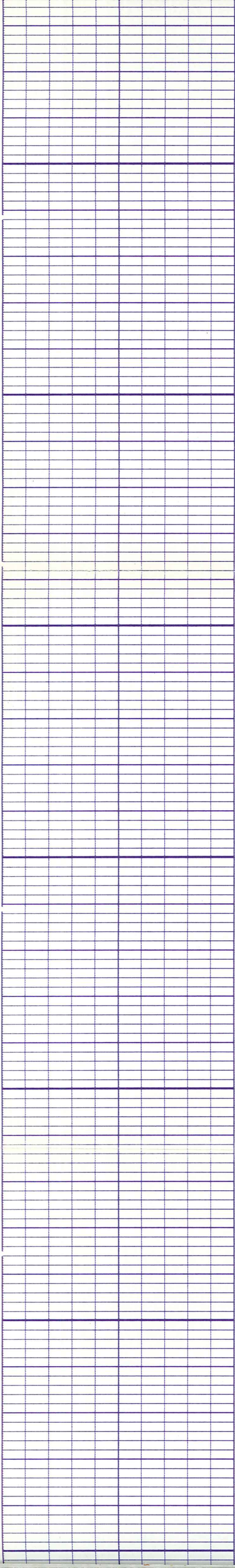
REMARKS:
CALIPER STUCK PARTIALLY
CLOSED @ 1400'
RUN 2- MAXIMUM CALIPER OPENING
= 50"

All interpretations are opinions based on inferences from electrical or other measurements and we cannot, and do not guarantee the accuracy or correctness of any interpretations, and we shall not, except in the case of gross or willful negligence on our part, be liable or responsible for any loss, costs, damages or expenses incurred or sustained by anyone resulting from any interpretation made by any of our officers, agents or employees. These interpretations are also subject to Clause 4 of our General Terms and Conditions as set out in our current Price Schedule.







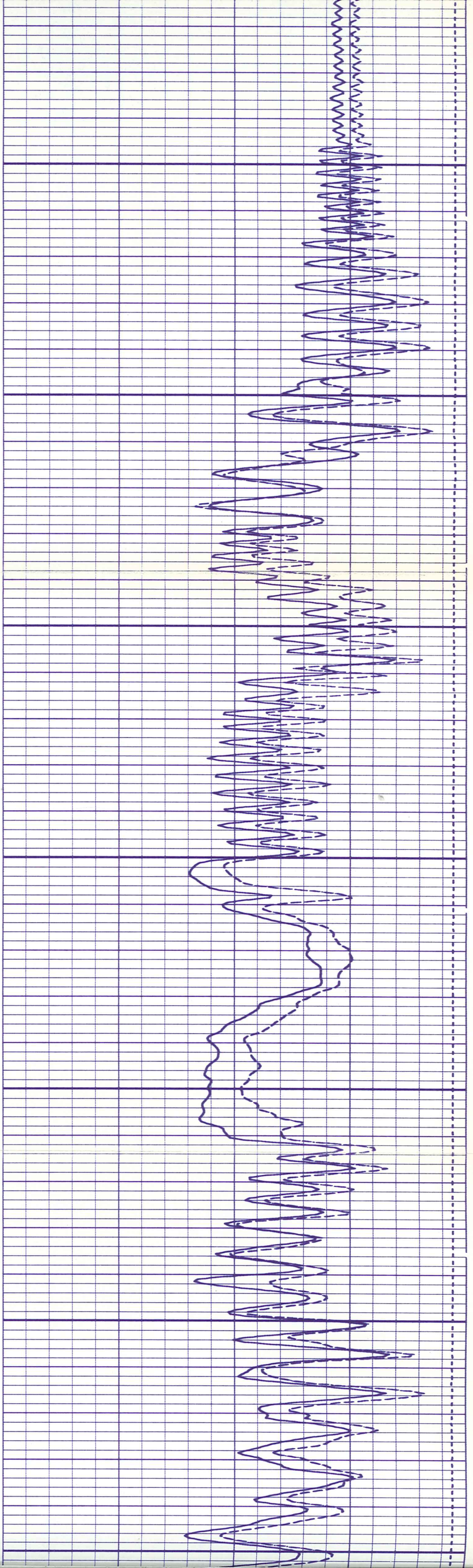


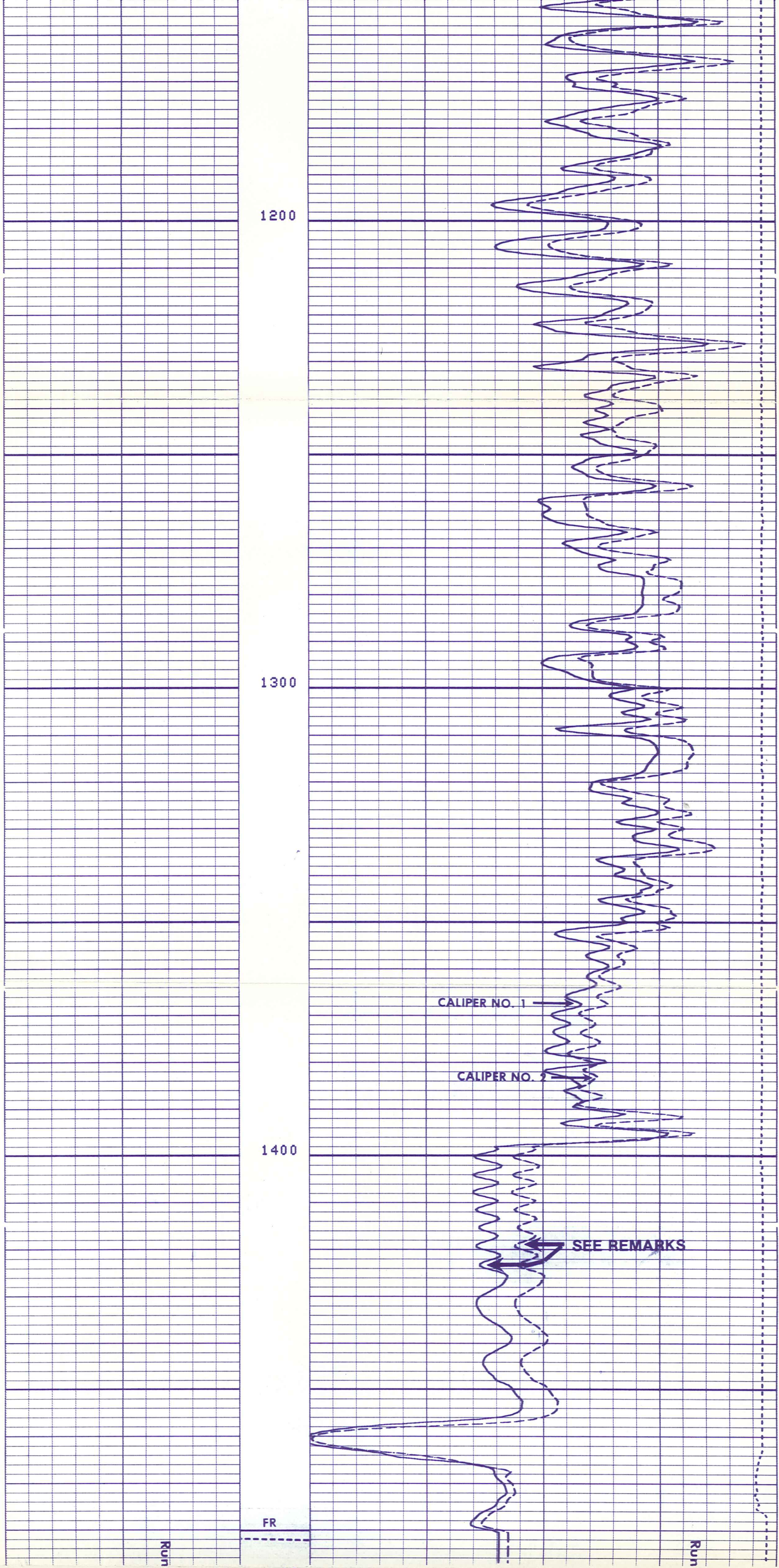
900

1000

1100

1200





1200

1300

1400

CALIPER NO. 1

CALIPER NO. 2

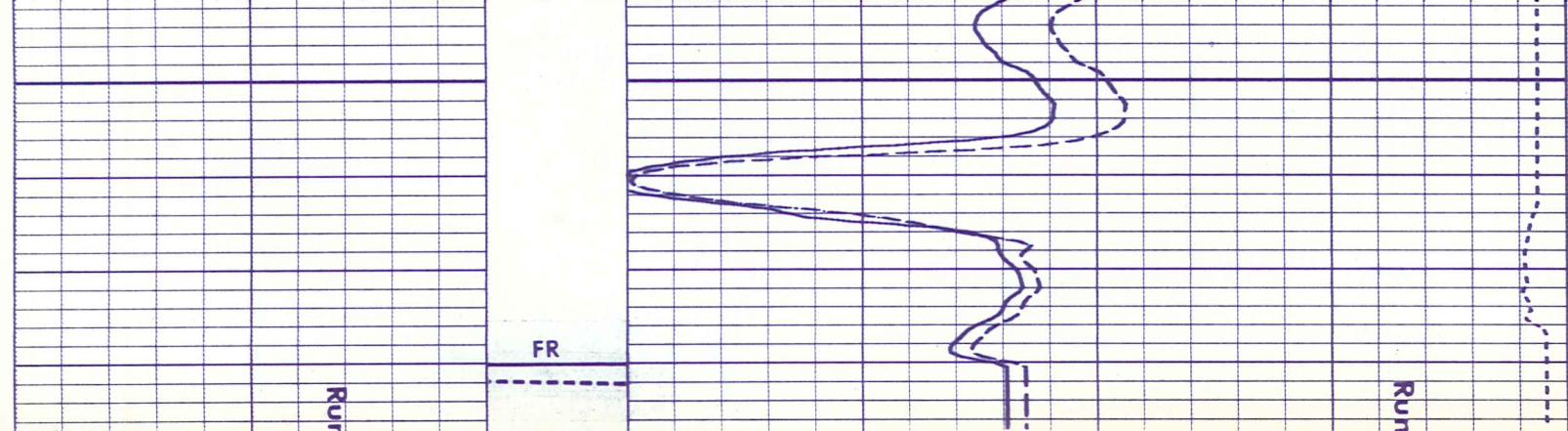
SEE REMARKS

Run 1

FR

19

Run 1



Run 1
↕
Run 2

FR

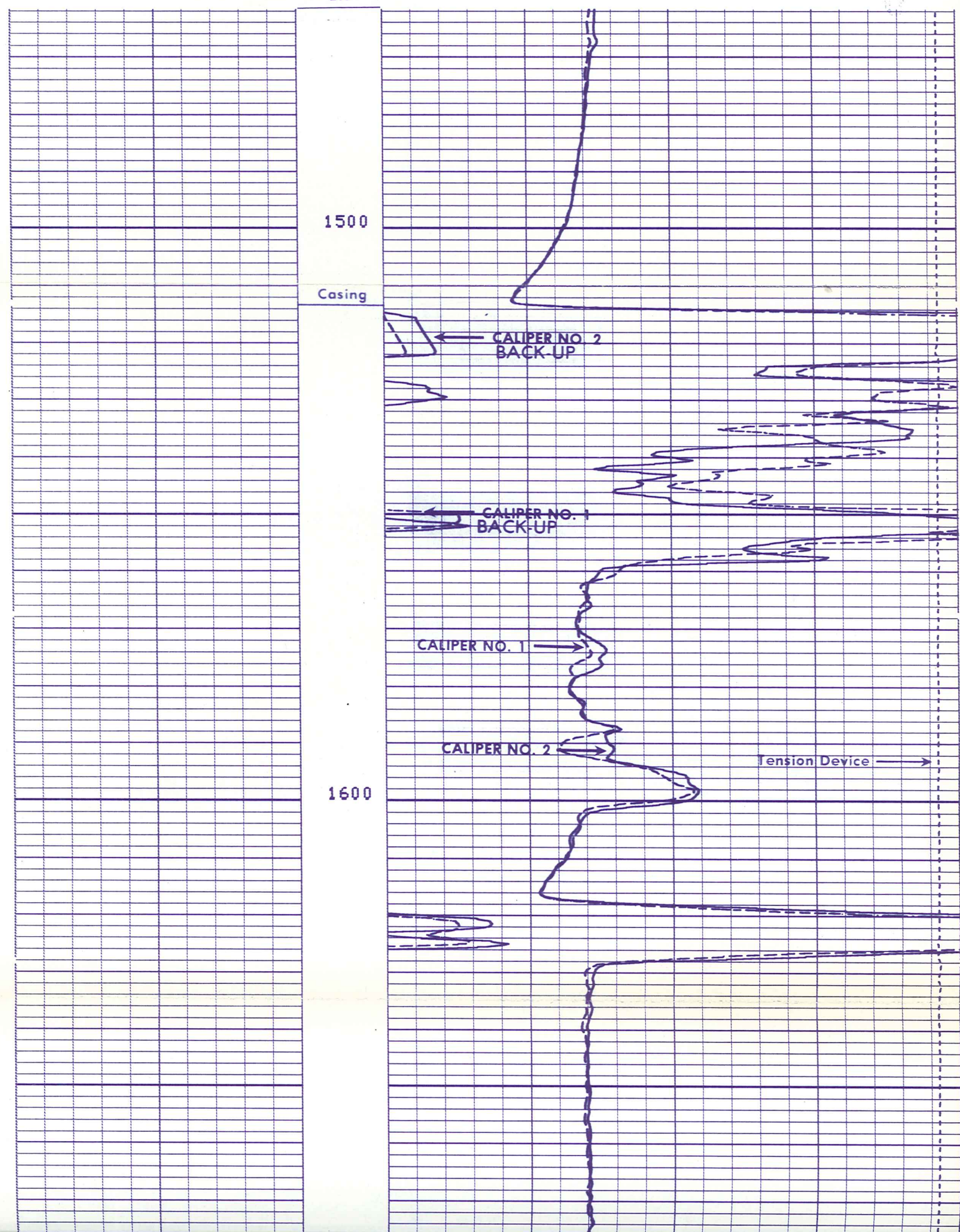
19
19
19
19
19
19

Run 1
↕
Run 2

	TENS(LB)	0.0
5.000	CALIPER 2	45.00
5.000	CALIPER 1	45.00

6-01-73
0140246

LR
6
6
6
6
6
6



1500

Casing

CALIPER NO. 2
BACK-UP

CALIPER NO. 1
BACK-UP

CALIPER NO. 1

CALIPER NO. 2

Tension Device

1600

1700

1800

1900

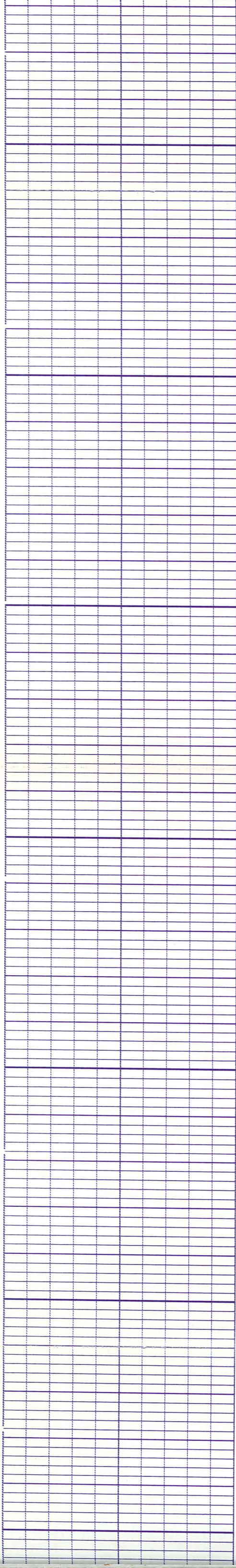


2000

2100

2200

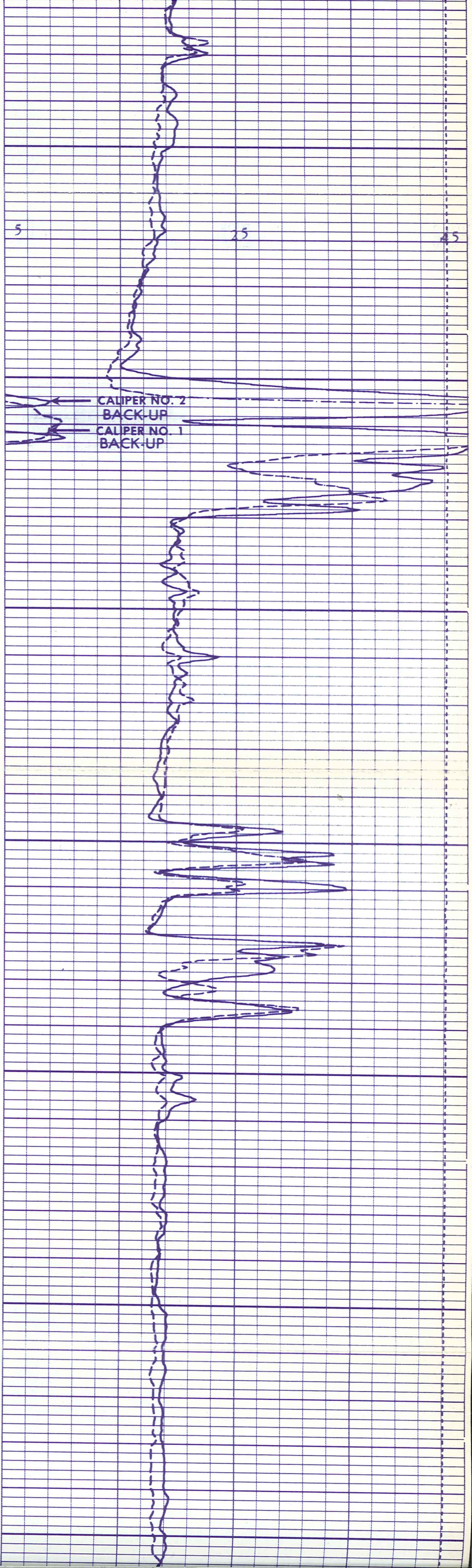




2300

2400

2500

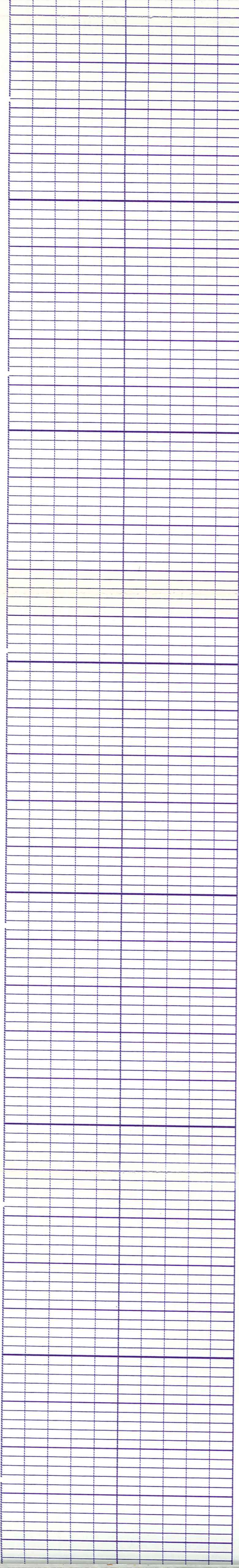


5

25

45

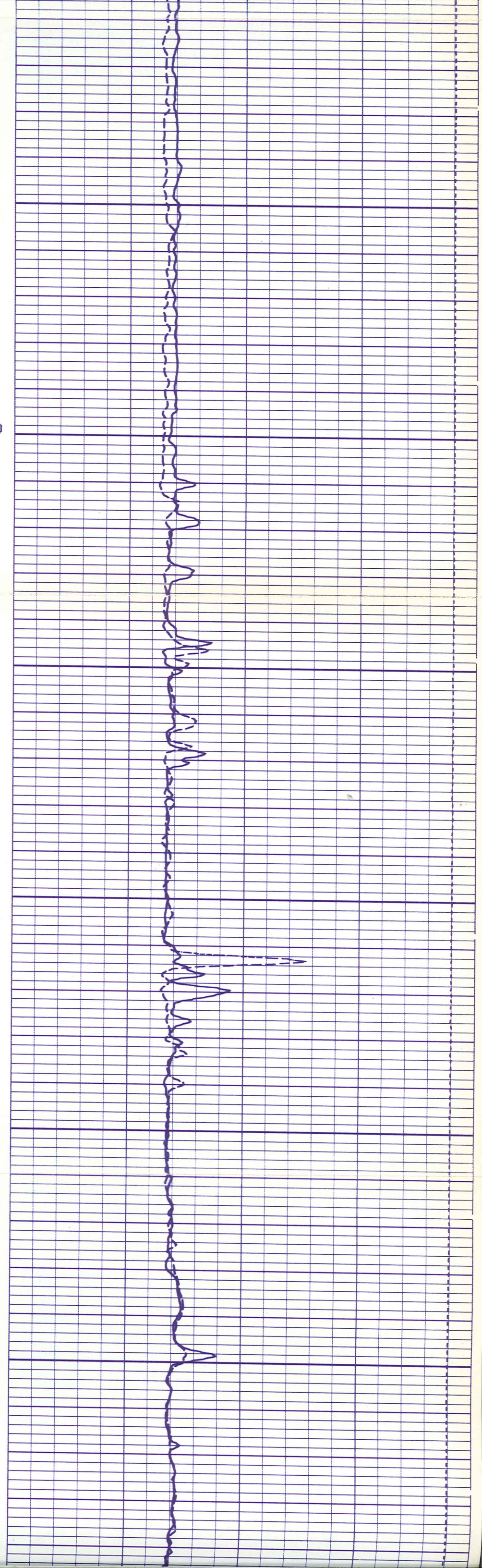
CALIPER NO. 2
BACK-UP
CALIPER NO. 1
BACK-UP



2600

2700

2800

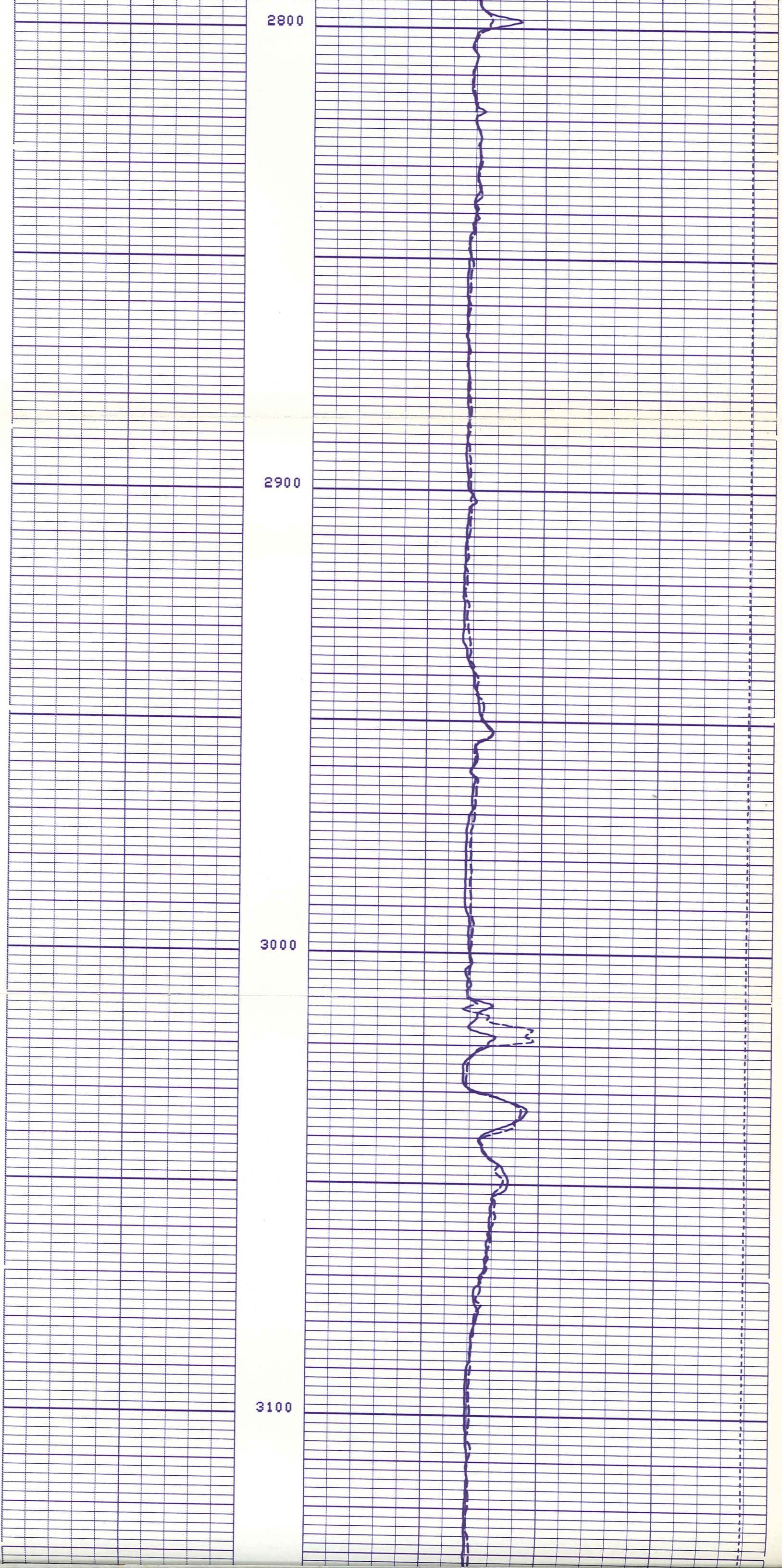


2800

2900

3000

3100

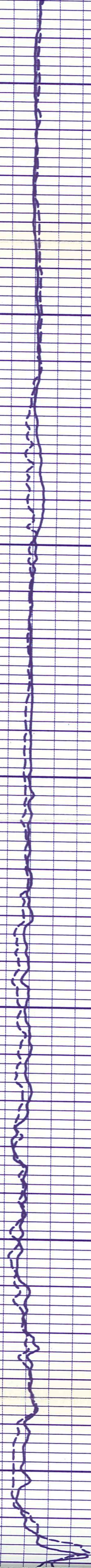


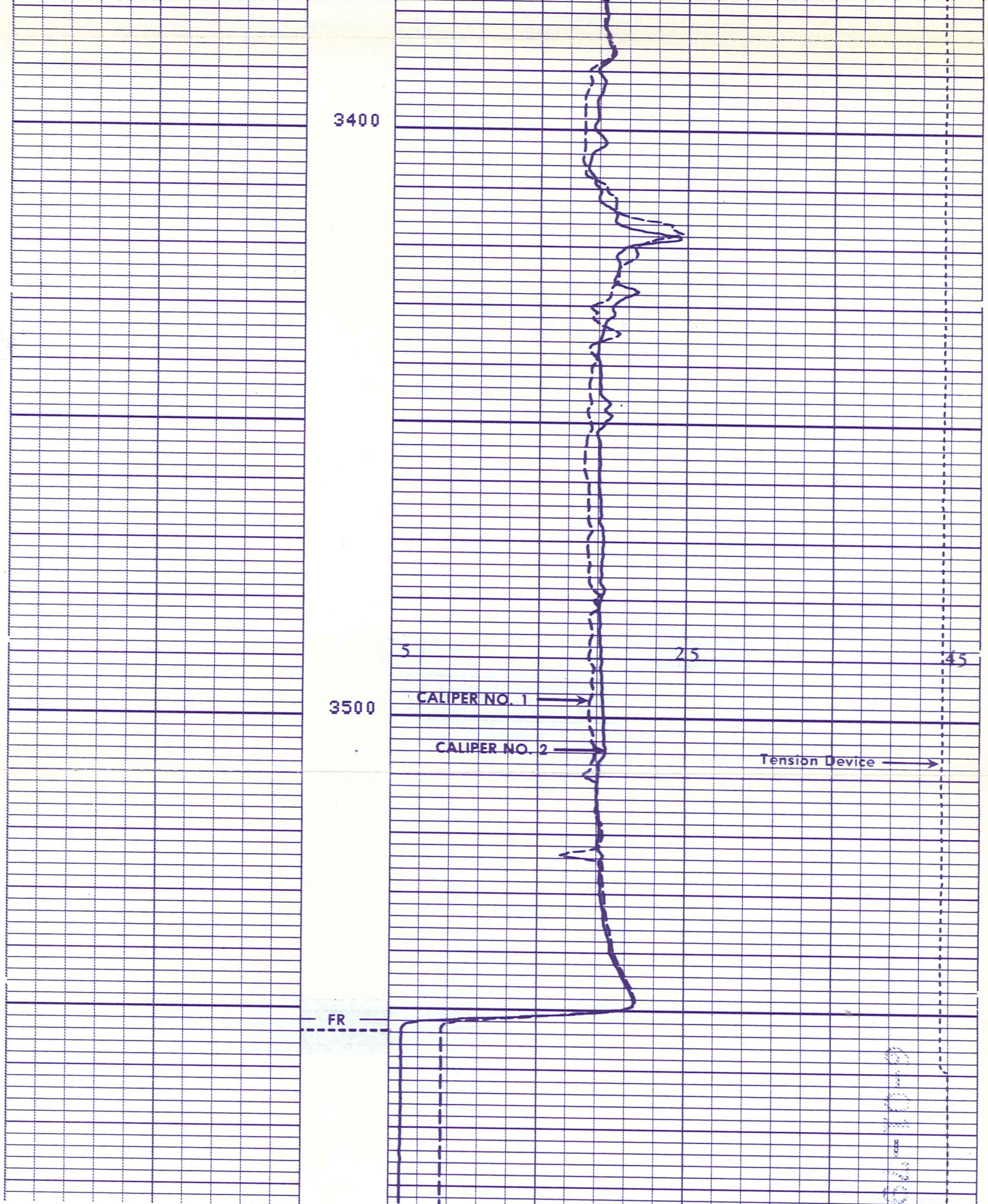
3100

3200

3300

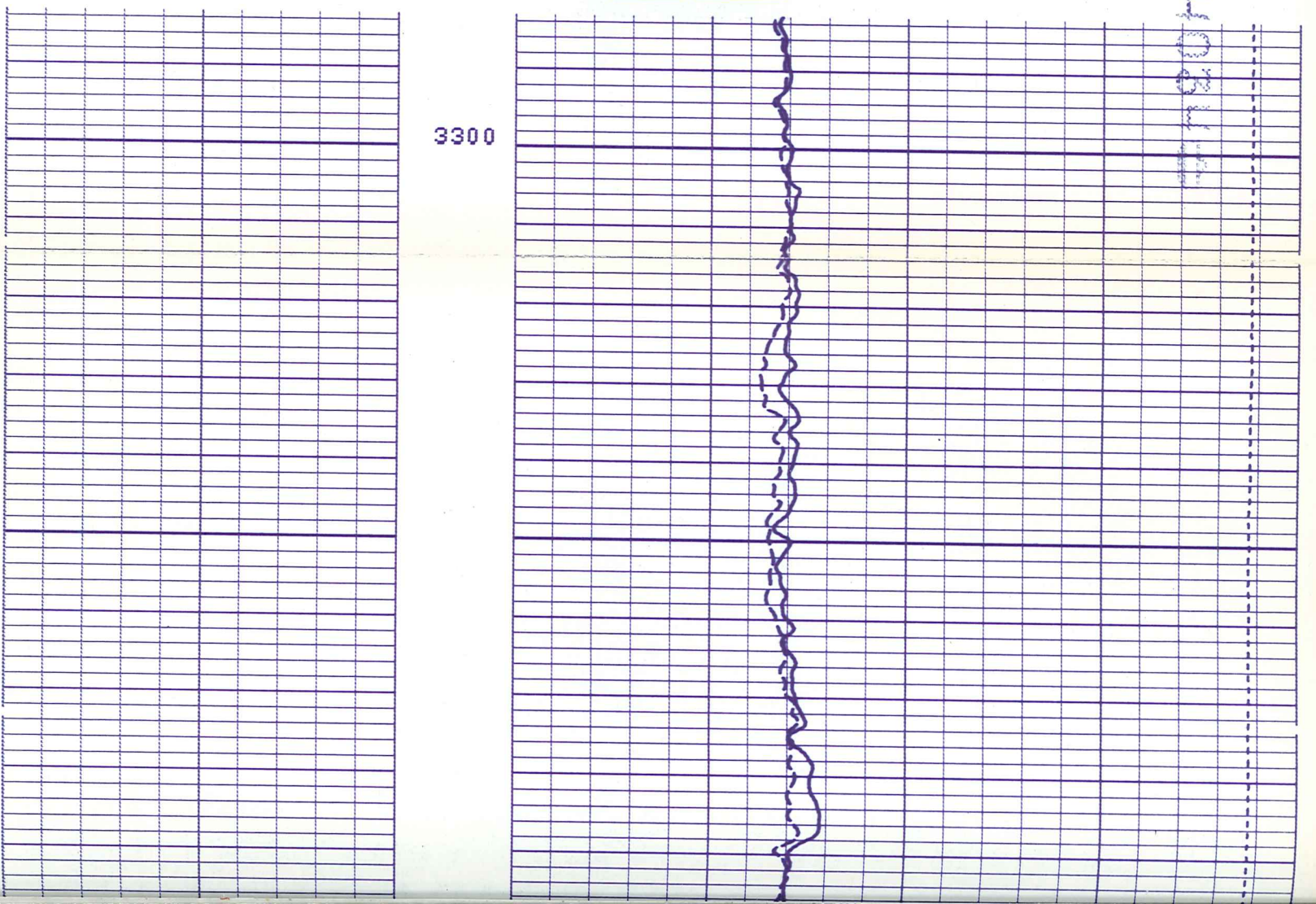
3400



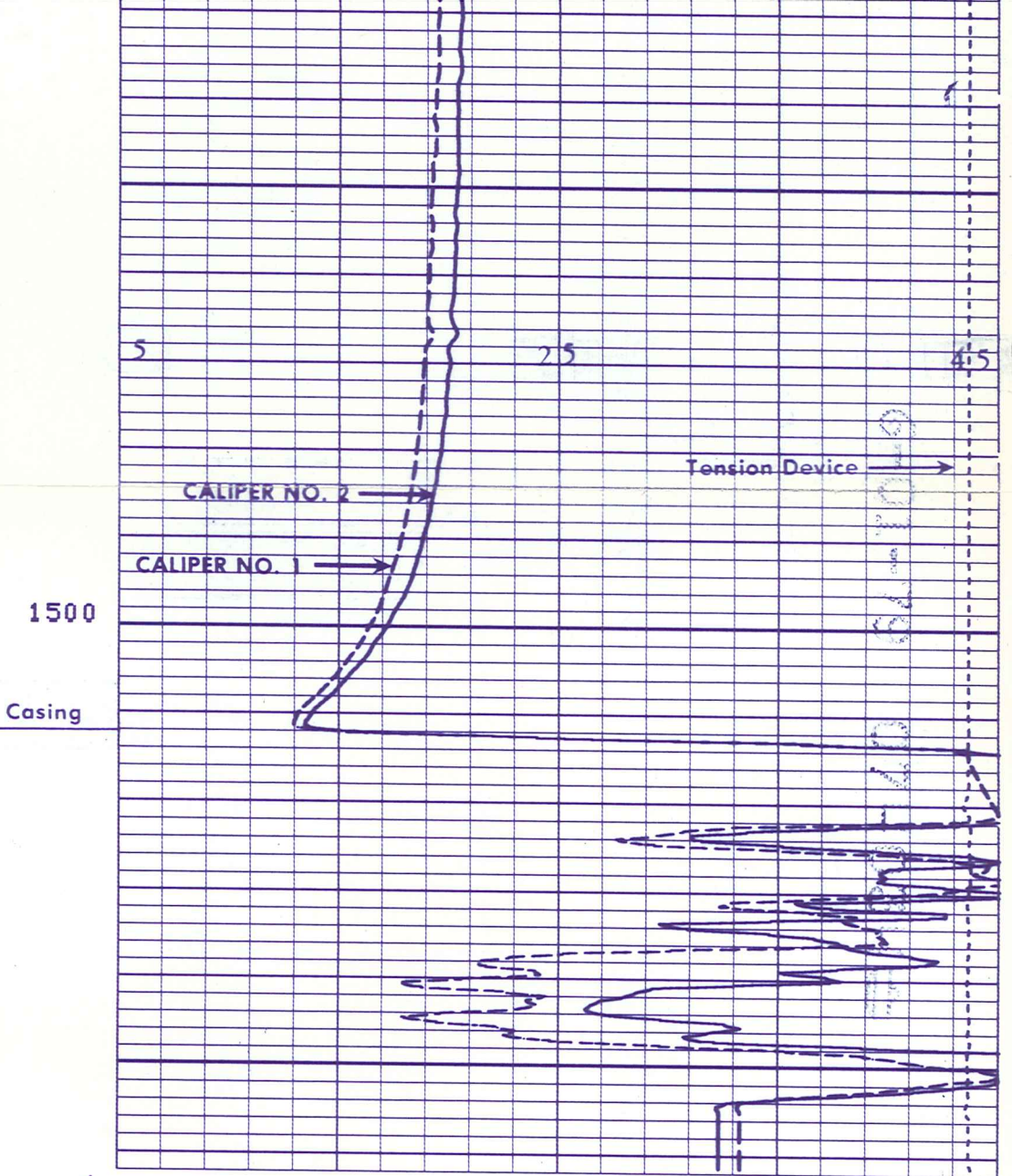
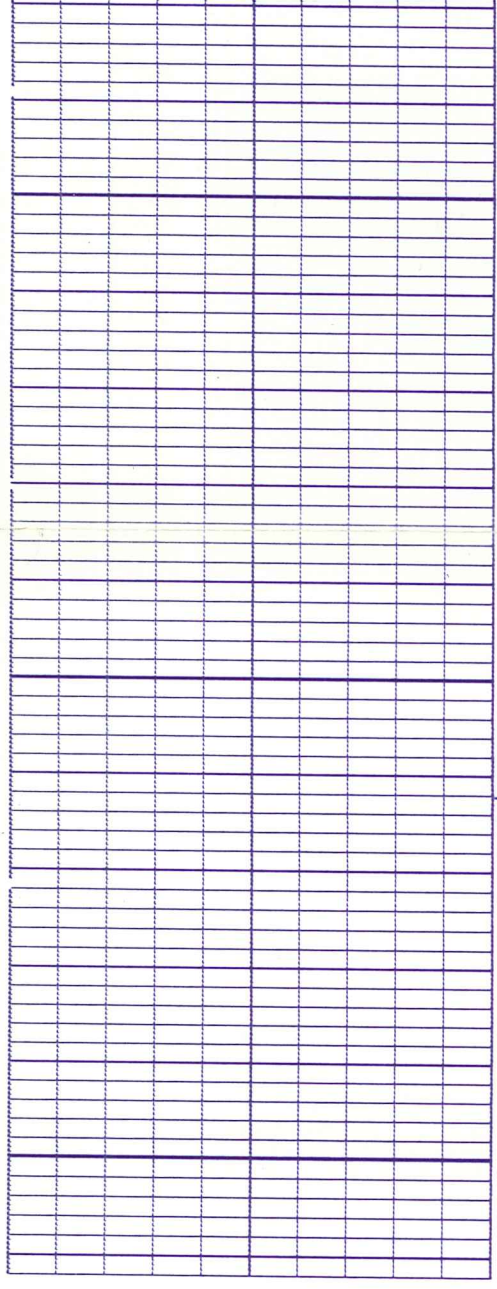


6
6
6
6
6
5

REPEAT SECTION



0740344



4
4
4
4
4
4

3
3
3
3
3
3
3
3
3
3

	TENS(LB)	0.0
	10000.	
5.000	CSFL(MM/M)	45.00
5.000	CLL8(MM/M)	45.00

2
2
2

4
4
4
4
4

3
3
3
3
3

3
3
3
3
3

	TENS(LB)	0.0
	10000.	
5.000	CSFL(MM/M)	45.00
5.000	CLL8(MM/M)	45.00

2
2
2


 G L 0 2 5 8 7
 FILE_CAB_15_DRAWER_1