

GL02614

Schlumberger

BOREHOLE VOLUME INTEGRATION

COUNTY	CASSIA	COMPANY	AEROJET NUCLEAR
FIELD or LOCATION	RAFT RIVER GEO RRGE #1	WELL	RRGE #1
WELL	RAFT RIVER GEOTHERMAL	COUNTY	CASSIA STATE IDAHO
LOCATION	NE/4 OF SW/4	Sec.	23 Twp. 15S Rge. 26E
Permanent Datum:	GL, Elev. 4835	Other Services:	DIL BHC-GR CALIPER
Log Measured From	GL, 0 Ft. Above Perm. Datum	Elev.:	K.B. NA D.F. G.L. 4835
Drilling Measured From	GL		
Date	1-9-75		
Run No.	ONE		
Depth - Driller	900		
Depth - Logger	900		
Btm. Log Interval	898		
Top Log Interval	18		
Casing - Driller	30 @ 40 @ @		
Casing - Logger	42		
Bit Size	26		
Type Fluid in Hole	F, G, M.		
Dens.	9.1	Visc.	50
pH	10.5	Fluid Loss	-- ml ml ml ml
Source of Sample	PIT		
R _m @ Meas. Temp.	4.13 @ 67 °F	@ °F	@ °F
R _{mf} @ Meas. Temp.	3.4 @ 65 °F	@ °F	@ °F
R _{mc} @ Meas. Temp.	6.3 @ 67 °F	@ °F	@ °F
Source: R _{mf} R _{mc}	M C		
R _m @ BHT	2.55 @ 109 °F	@ °F	@ °F
Time Since Circ.	5 HRS.		
Max. Rec. Temp.	109 °F	°F	°F
Equip. Location	7710 R.S.		
Recorded By	PARKS		
Witnessed By	STOKER		

FOLD HERE The well name, location and borehole reference data were furnished by the customer.

CHANGES IN MUD TYPE OR ADDITIONAL SAMPLES		SCALE CHANGES	
Date	Sample No.	Type Log	Depth
Depth - Driller	Type Fluid in Hole	Scale Up Hole	Scale Down Hole
Dens.	Visc.		
ph	Fluid Loss		
Source of Sample	ml		
R _m @ Meas. Temp.	°F		
R _m @ Meas. Temp.	°F		
R _m @ Meas. Temp.	°F		
Source: R _{mf} R _{mc}			
R _m @ BHT	°F		
R _m @ BHT	°F		
R _m @ BHT	°F		

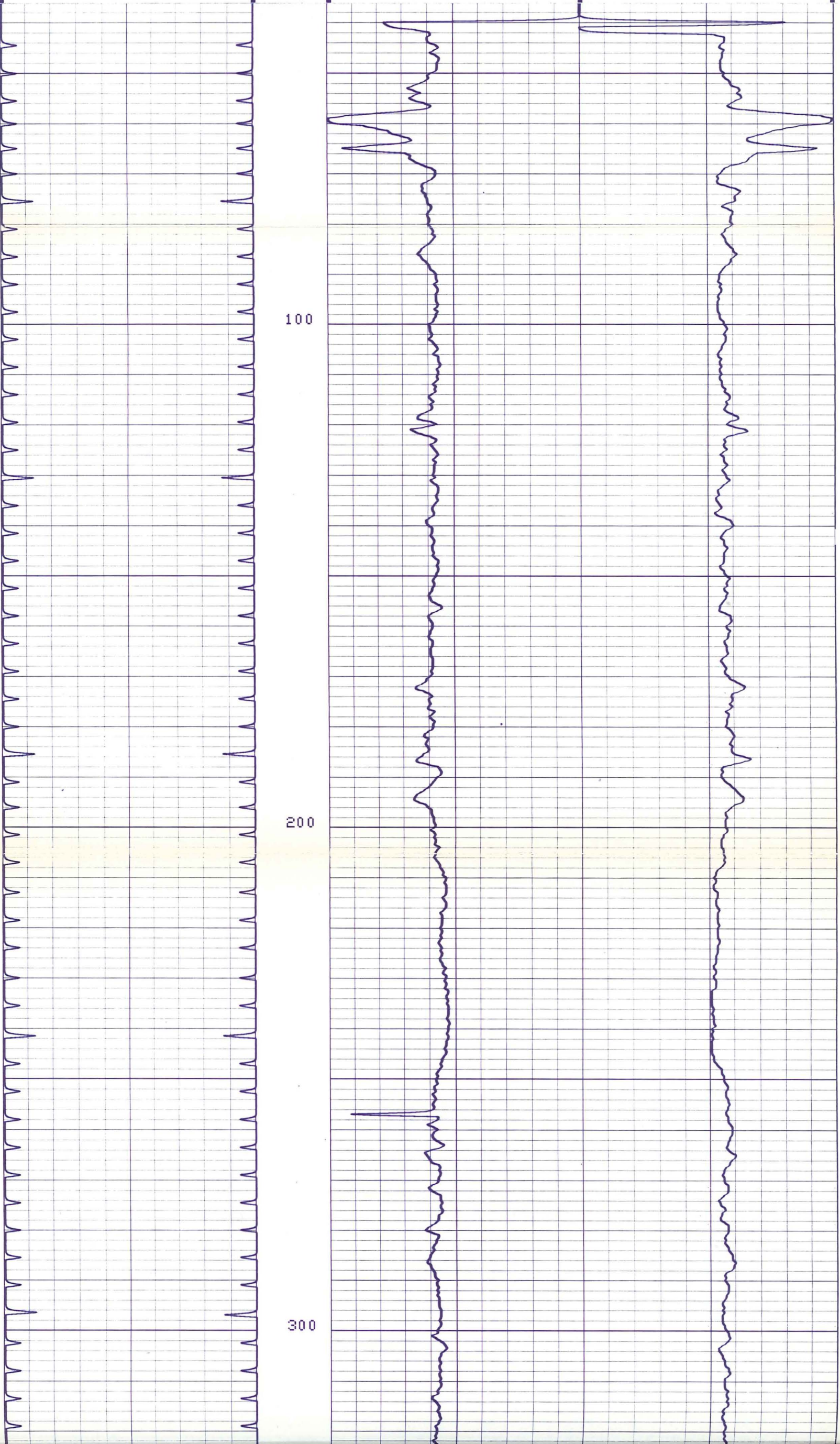
REMARKS	
Service Order No. -	23851
API Serial No. -	
Run No.	ONE
	BGT

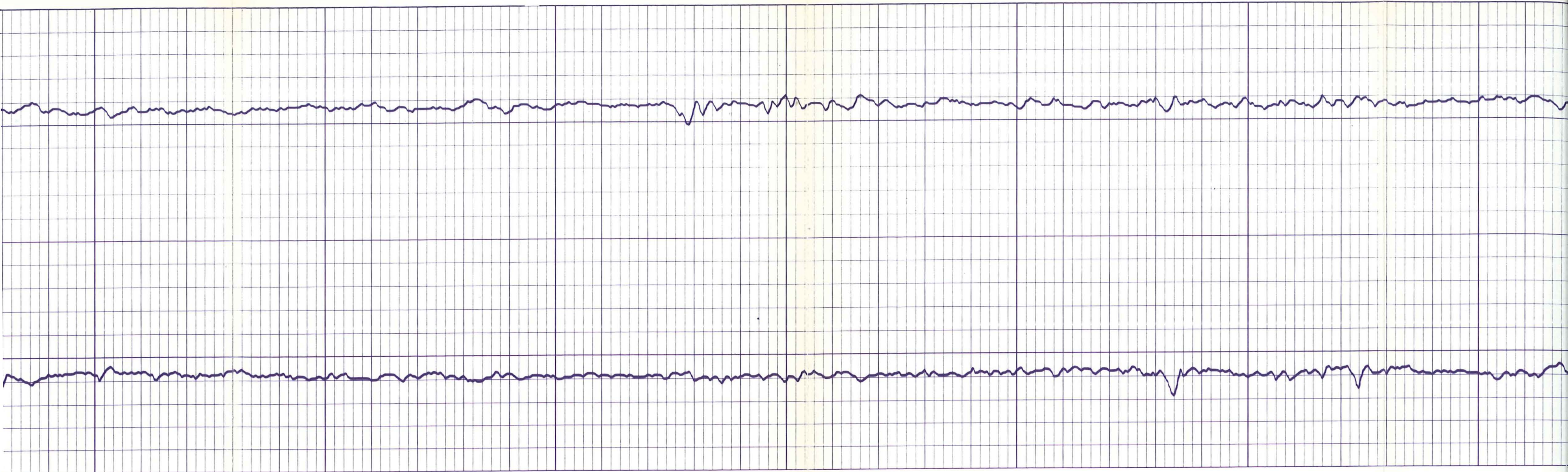
CALIBRATION DATA	
CALIBRATION:	BACKGND. SOURCE GALV. INCR. SENS. TAP SENS. TAP TIME
	CPS. CPS. DIVISION (FOR CAL.) (RECORD) CONST.
GAMMA RAY:	

All interpretations are opinions based on inferences from electrical or other measurements and we cannot, and do not guarantee the accuracy or correctness of any interpretations, and we shall not, except in the case of gross or willful negligence on our part, be liable or responsible for any loss, costs, damages or expenses incurred or sustained by anyone resulting from any interpretation made by any of our officers, agents or employees. These interpretations are also subject to Clause 7 of our General Terms and Conditions as set out in our current Price Schedule.

VOLUME	CALIPER #1	CALIPER #2
SMALL PIP = 20 FT. 3		
LARGE PIP = 200 FT. 3		
INTERGRATION BY ELLIPSE AREA	30	20 20
INTERGRATION BY AVERAGE RADIUS		30

VOLUME SMALL PIP = 20 FT. ³ LARGE PIP = 200 FT. ³	CALIPER #1		CALIPER #2	
	30	20	20	30
INTERGRATION BY ELLIPSE AREA ↓				
INTERGRATION BY AVERAGE RADIUS ↘				



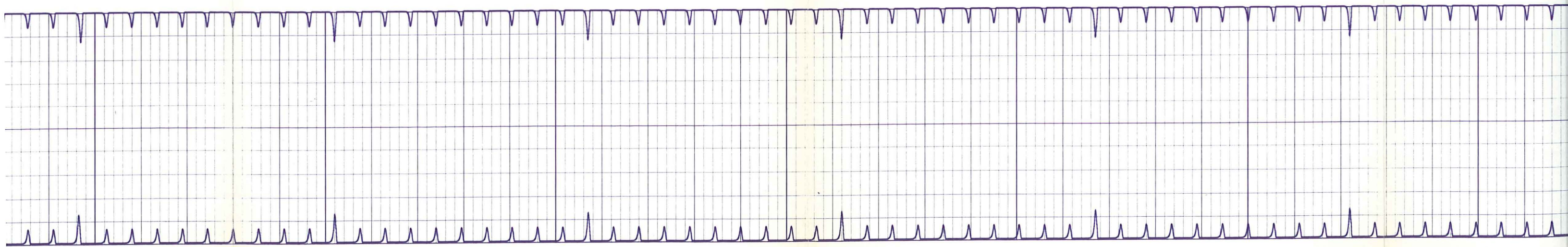


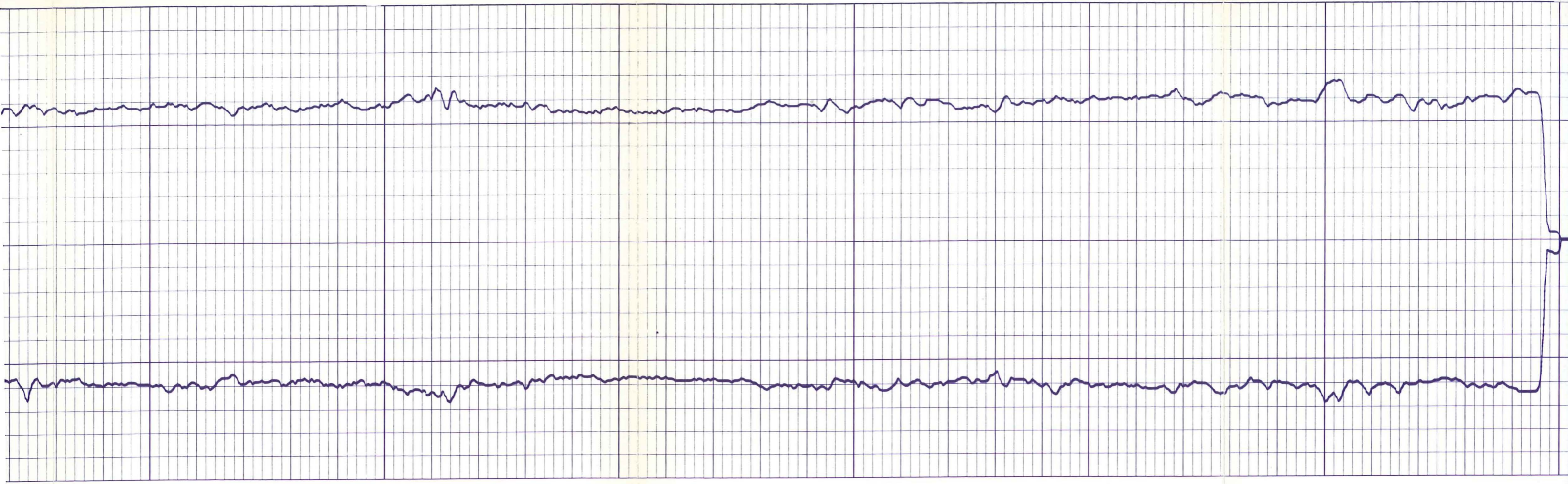
300

400

500

600



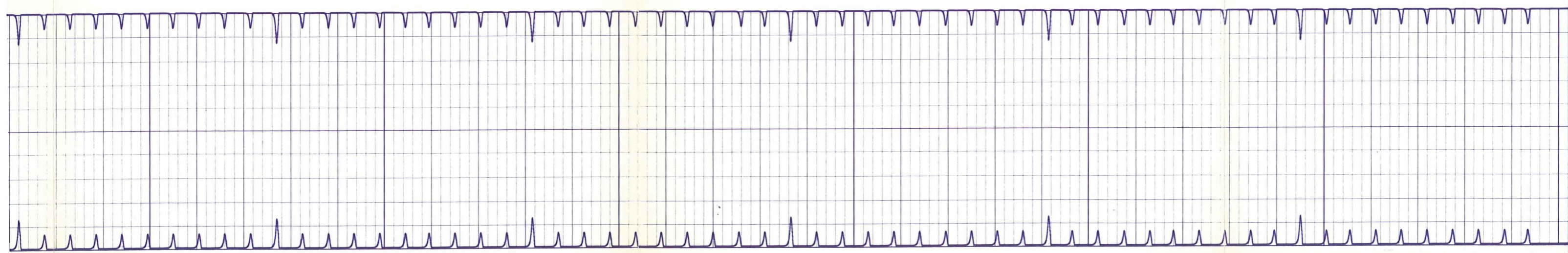


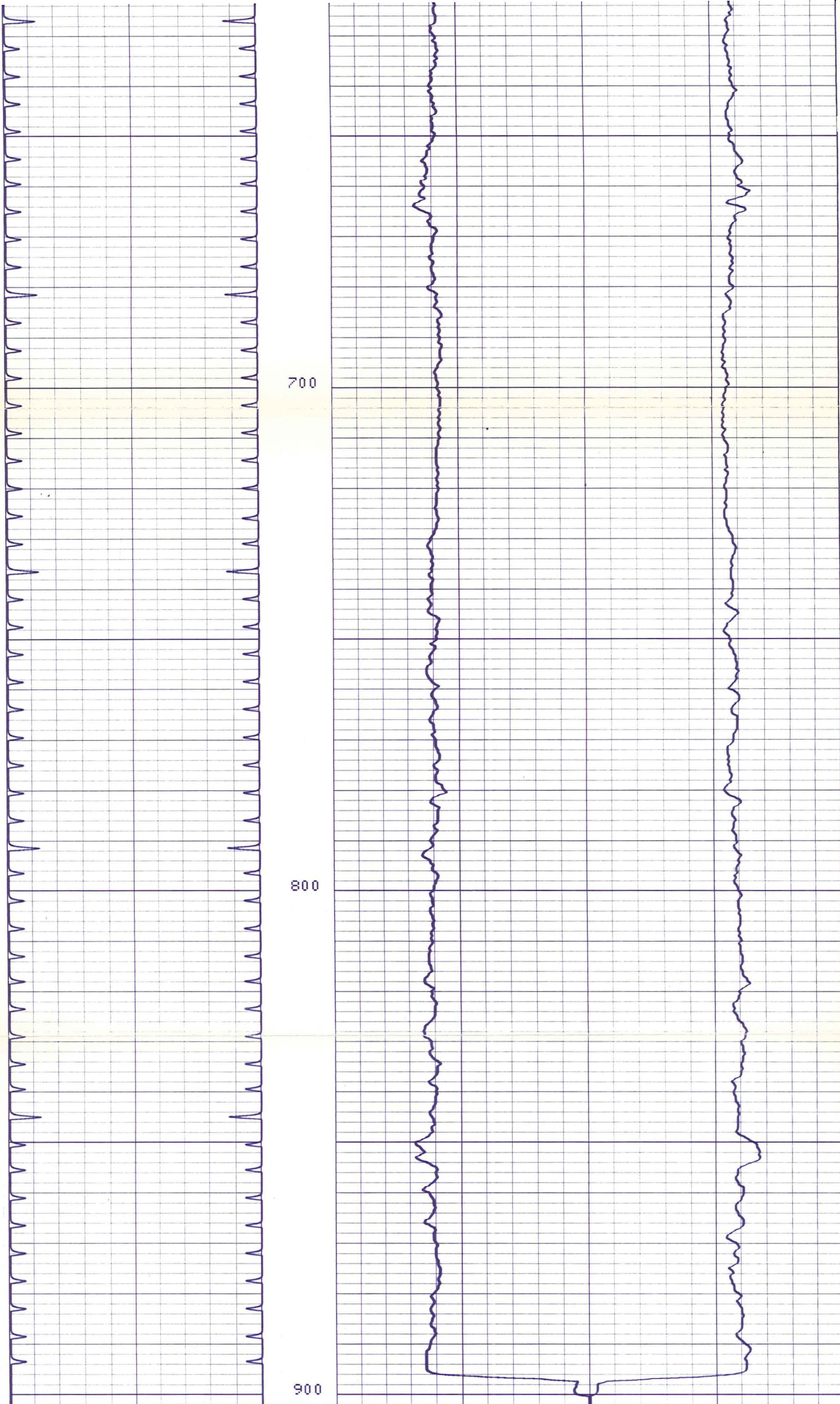
600

700

800

900





700

800

900

COMPANY	AEROJET NUCLEAR-INEL	SCHL. FR	898
WELL	RRGE #1	SCHL. TD	900
FIELD	RAFT RIVER GEOTHERMAL	DRLR TD	900
COUNTY	CASSIA	Elev:	
STATE	IDAHO	KB	---
		DF	---
		GL	4835



FILE_CAB_15_DRAWER_2