



**BHC**  
*Acoustilog*

FILE NO. 573	COMPANY E.G. & G. IDAHO INC.		
	WELL RRGP-4A		
	FIELD RAFT RIVER GEOTHERAL		
	COUNTY CASSIA	STATE	IDAHO
LOCATION:		Other Services	
SEC 23	TWP 15S	RGE 26E	DI/FL/SP
Permanent Datum G.L.		Elev. 4840	KB 4856
Log Measured from K.B. = 16		Ft. Above Permanent Datum	DF 4855
Drilling Measured from K.B.			GL 4840
Date	10/20/78		
Run No.	ONE		
Depth—Driller	5212		
Depth—Logger	5217		
Bottom Logged Interval	5208		
Top Logged Interval	3467		
Casing—Driller	9 5/8 @ 3457	@	@
Casing—Logger	3467		
Bit Size	8 3/4		
Type Fluid in Hole	WATER		
	@	@	@
Density and Viscosity			
pH and Fluid Loss		cc	cc
Source of Sample			
Rm @ Meas. Temp.	@ °F	@ °F	@ °F
Rmf @ Meas. Temp.	@ °F	@ °F	@ °F
Rmc @ Meas. Temp.	@ °F	@ °F	@ °F
Source of Rmf and Rmc			
Rm @ BHT	@ °F	@ °F	@ °F
Time Since Circ.	24 HRS.		
Max. Rec. Temp. Deg. F.	266 °F	°F	°F
Equip. No. and Location	HL76199 RSV		
Recorded By	PERESSINI		
Witnessed By	STEADHAM		

THIS HEADING AND LOG CONFORMS TO API RECOMMENDED STANDARD PRACTICE RP-31

Equipment Used		Scale Changes	
Series No.	Run No.	Depth	Type Log
1603	TWO		
626	TWO		
87825	87825		
37893	28669		
37893	28669		
83217	34481		

Equipment Data		Scale Up Hole		Scale Down Hole	
Run No.	Tool Type	Pad Type	Tool Position	Other	
TWO	BHC 1603		CENTERED		

Changes in Mud Type or Additional Samples		Scale Up Hole		Scale Down Hole	
Date	Sample No.	Depth	Type Log	Scale Up Hole	Scale Down Hole

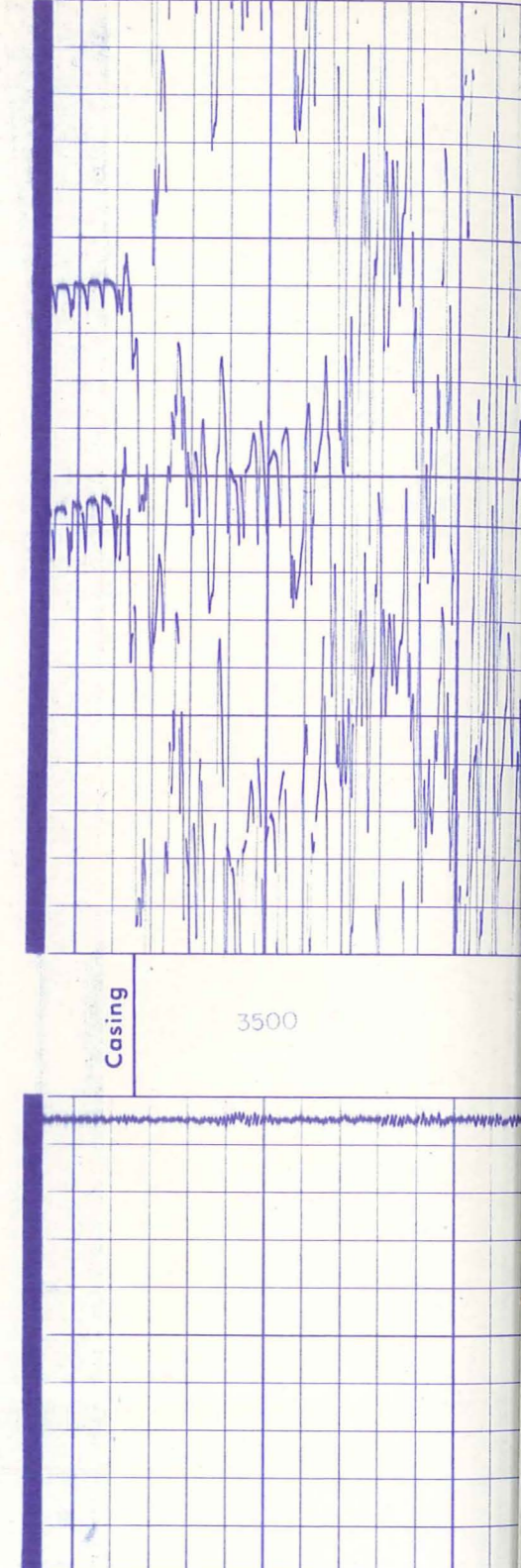
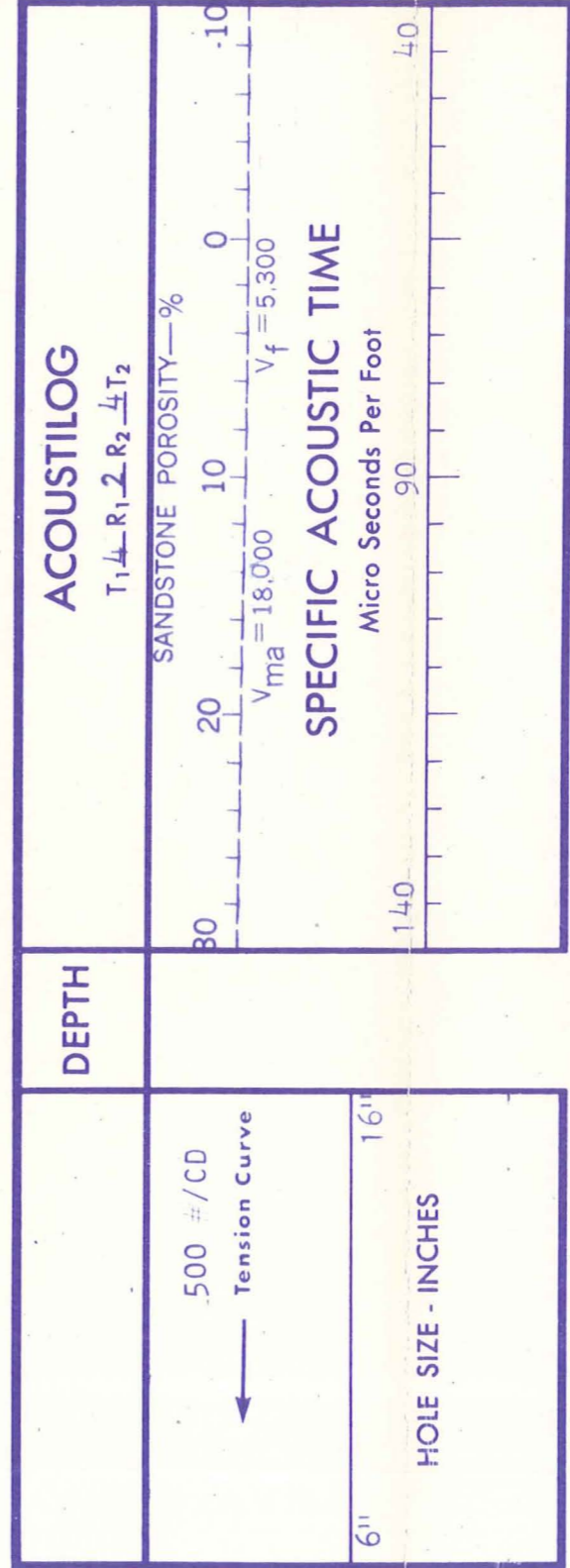
Type Fluid in Hole		Scale Up Hole		Scale Down Hole	
Dens.	Visc.	Depth	Type Log	Scale Up Hole	Scale Down Hole

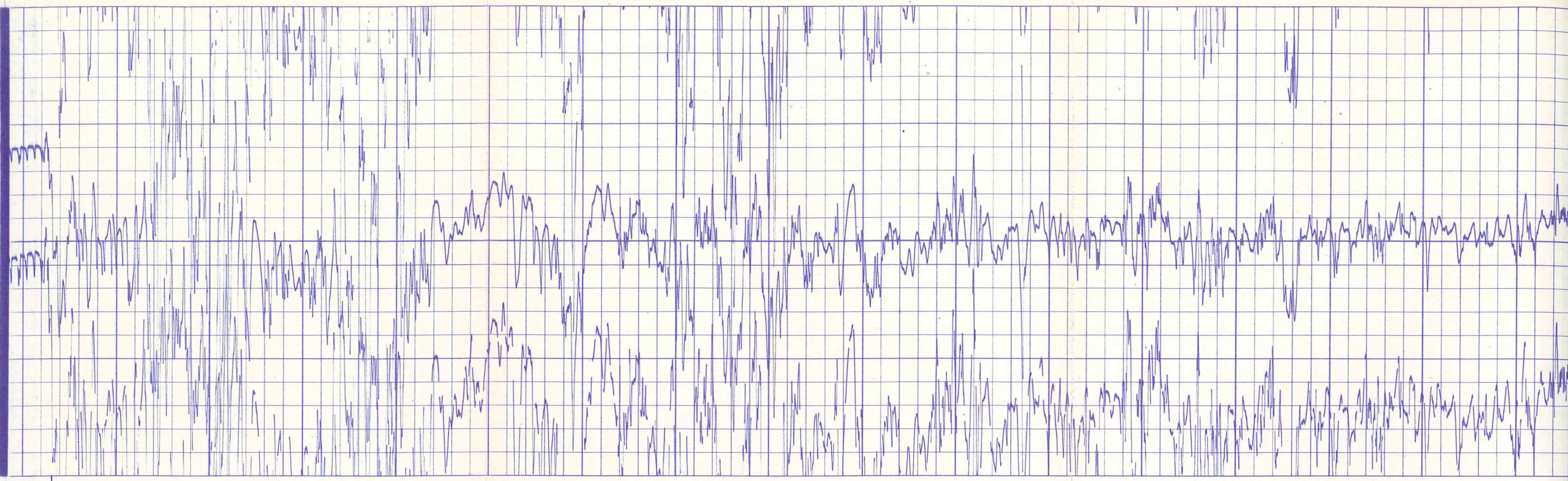
  

Source of Sample		Scale Up Hole		Scale Down Hole	
Rm @ Meas. Temp.	Rmf @ Meas. Temp.	Depth	Type Log	Scale Up Hole	Scale Down Hole
@ °F	@ °F				
@ °F	@ °F				
@ °F	@ °F				

Source of Rmf and Rmc		Scale Up Hole		Scale Down Hole	
Rm @ BHT	Rmf @ BHT	Depth	Type Log	Scale Up Hole	Scale Down Hole
@ °F	@ °F				
@ °F	@ °F				
@ °F	@ °F				





Casing

3500

3600

3700

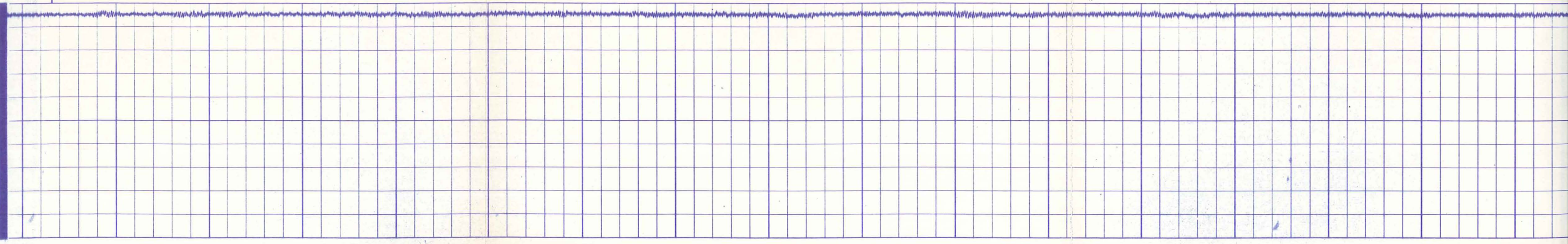
3800

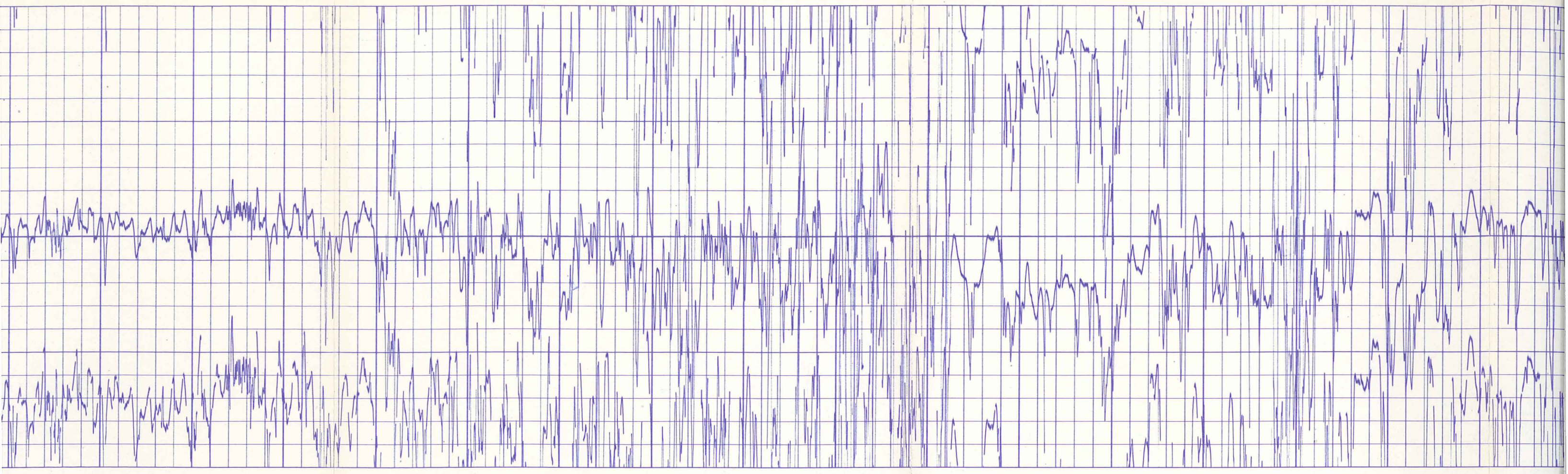
3900

4000

4100

4200





4200

4300

4400

4500

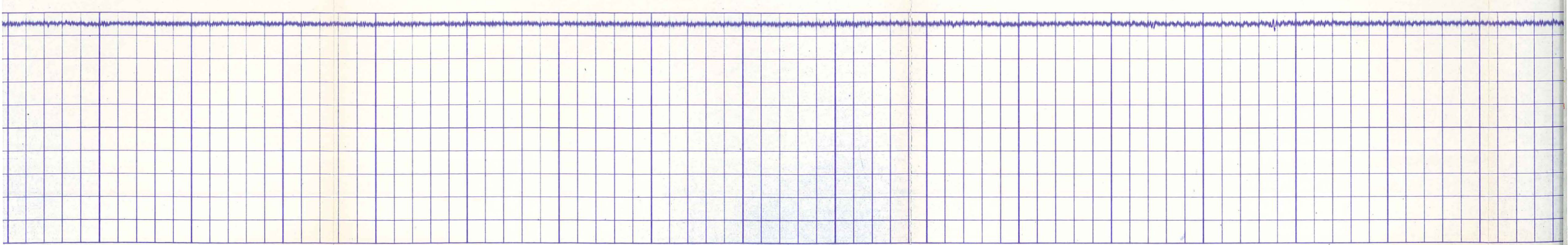
4600

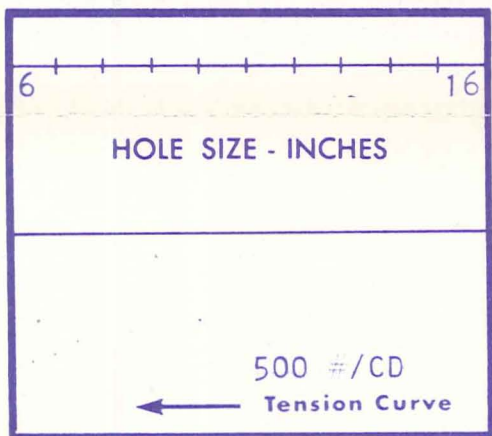
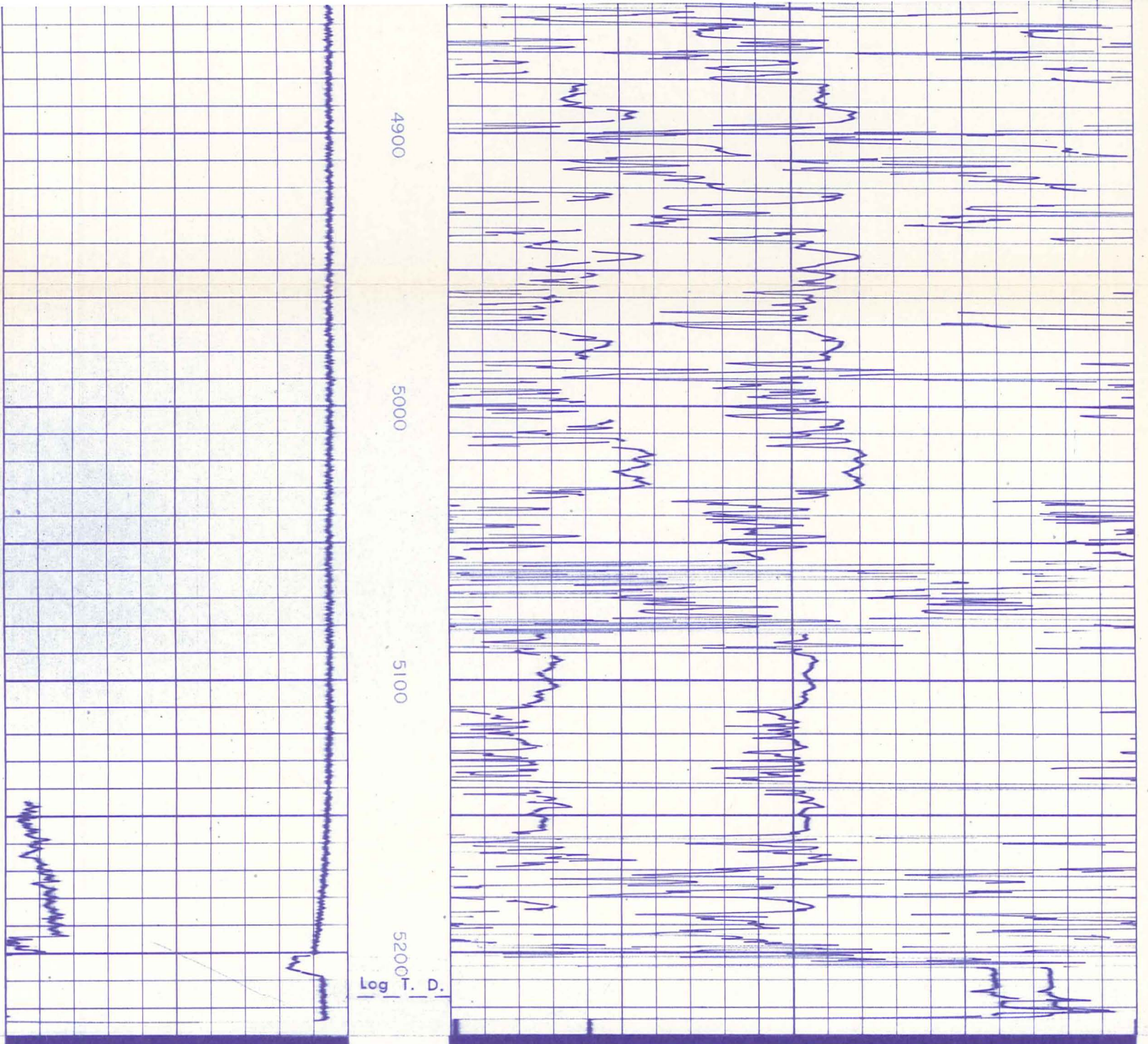
4700

4800

4900

5

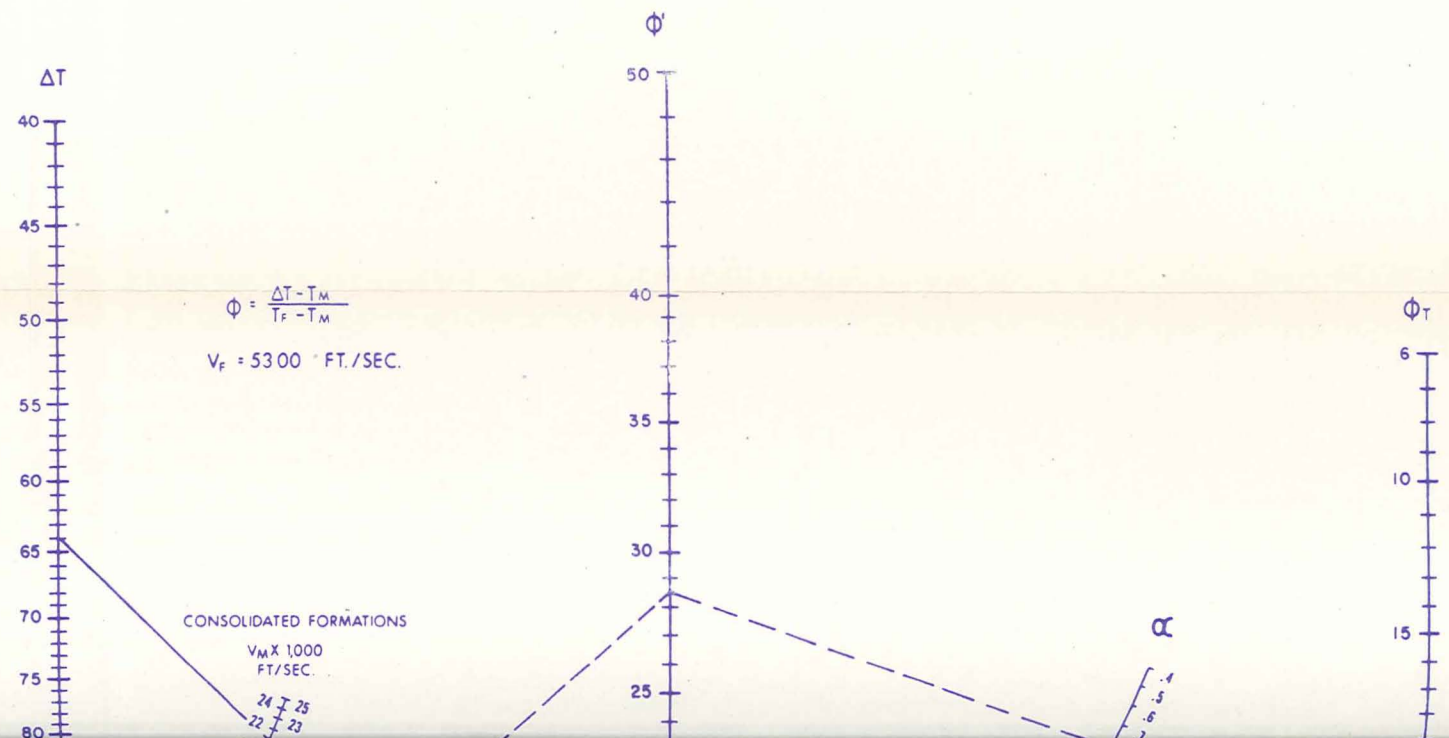


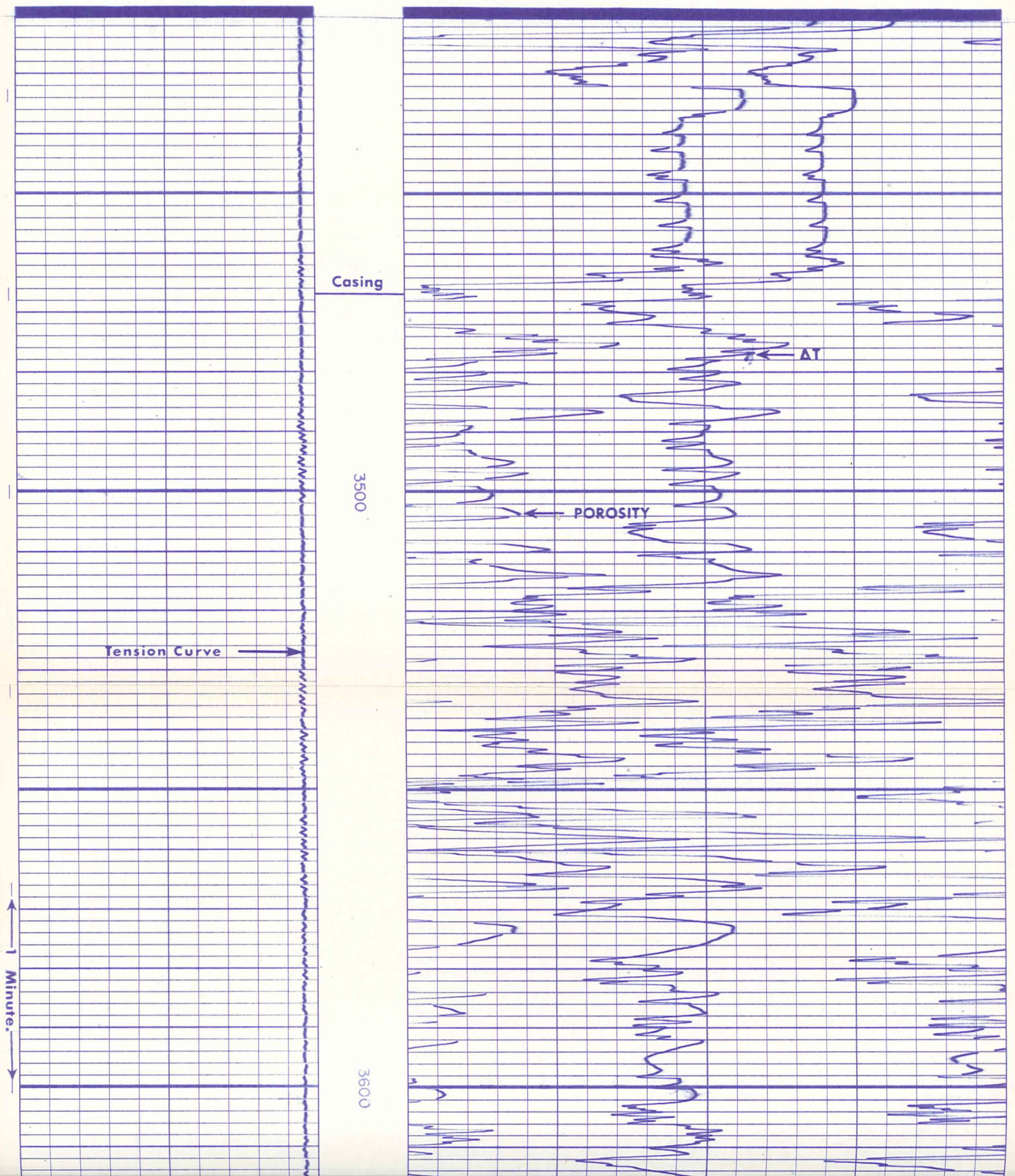
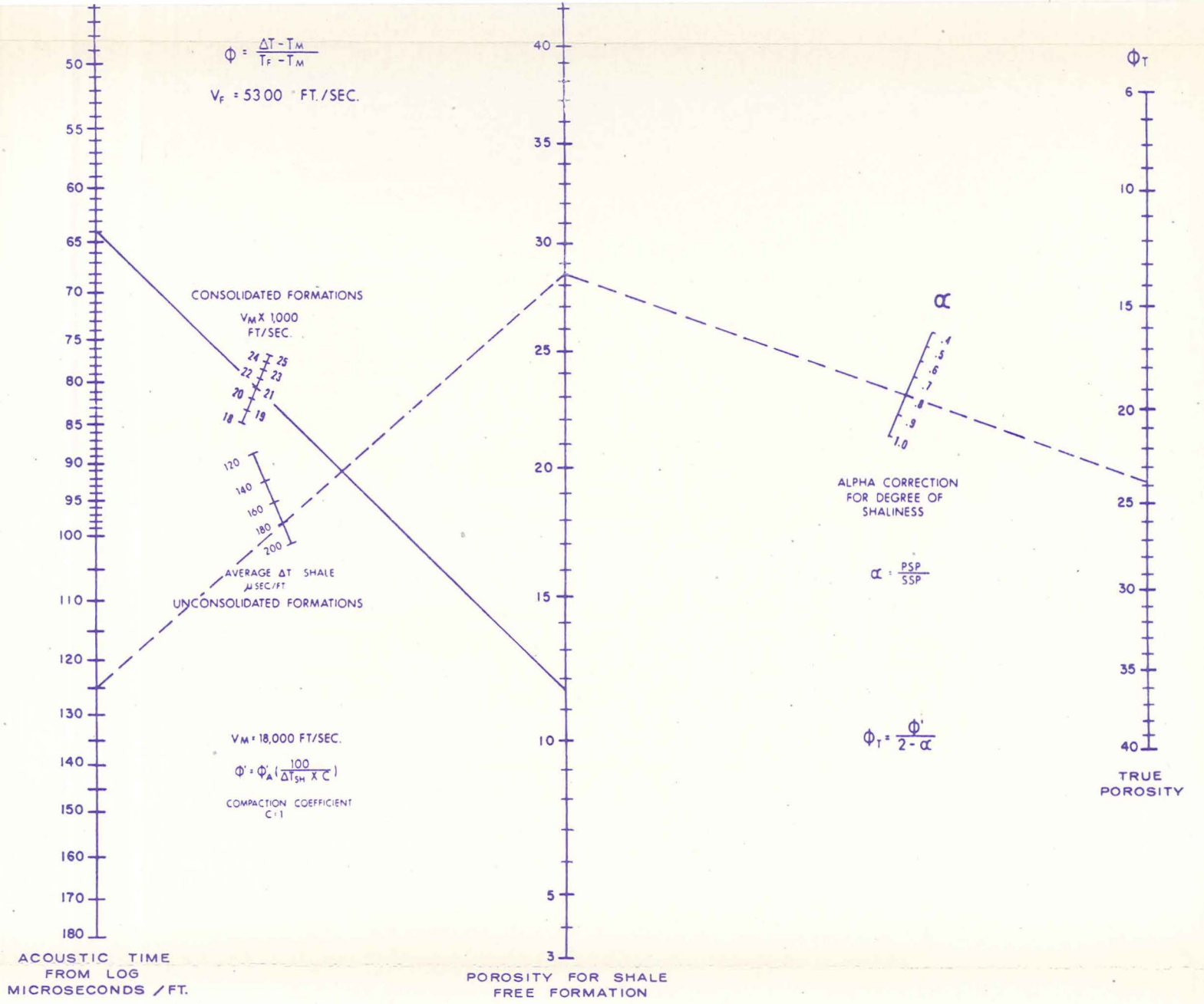


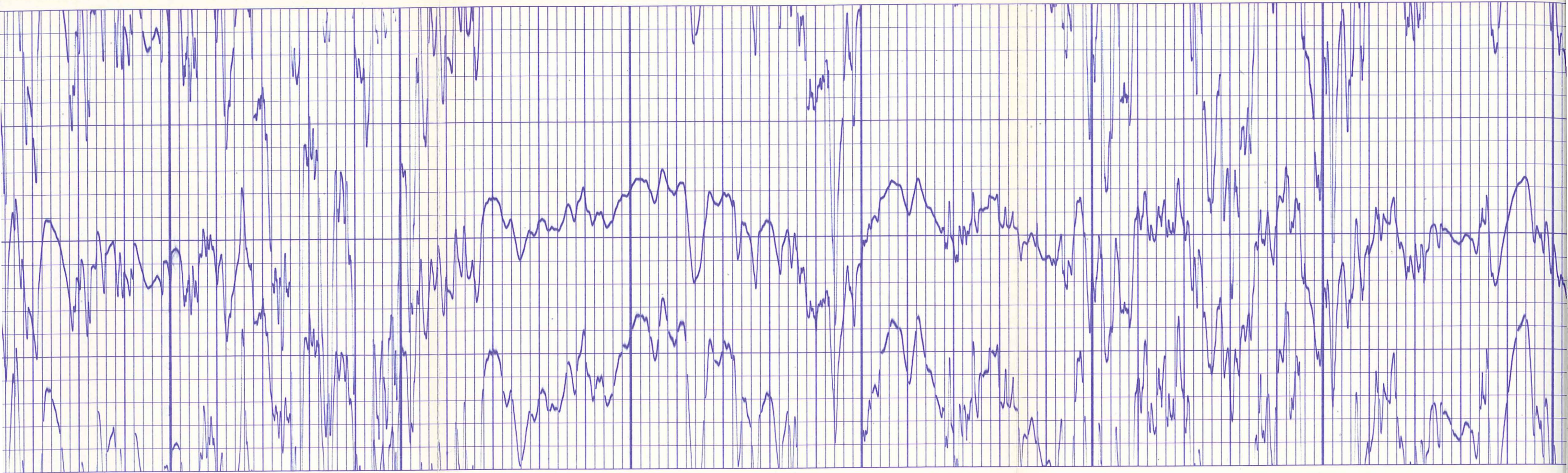
	DEPTH	ACOUSTILOG T <sub>1</sub> <u>4</u> R <sub>1</sub> <u>2</u> R <sub>2</sub> <u>4</u> T <sub>2</sub>
--	-------	--

Company	E.G. & G. IDAHO INC.	Drillers T.D.	5212
Well	RRGP-4A	Log F.R.	5208
Field	RAFT RIVER GEOTHERMAL	Log T.D.	5217
County	CASSIA	Elevations:	
State	IDAHO	K.B.	4856
		D.F.	4855
		G.L.	4840

POROSITY DETERMINATION FROM ACOUSTILOG





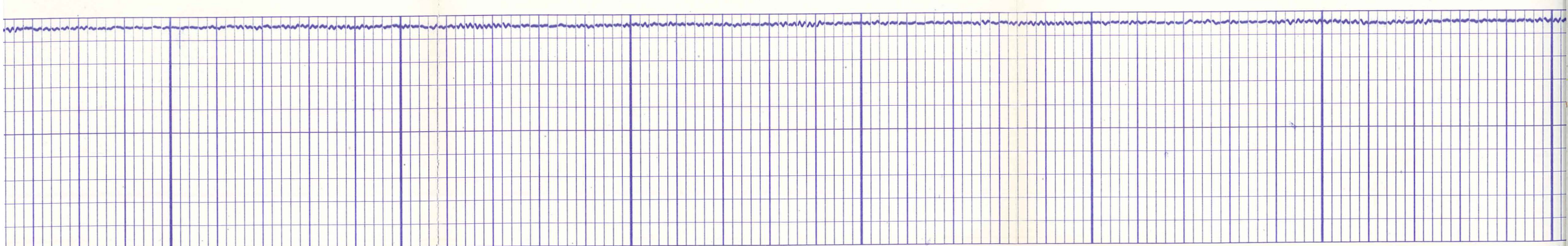


3600

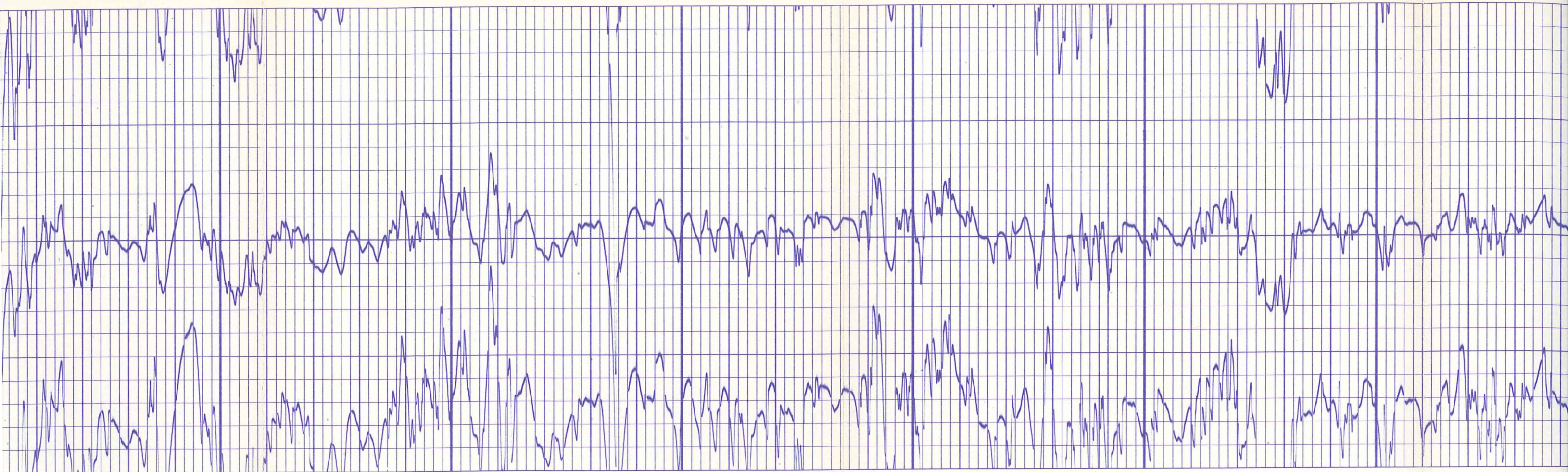
3700

3800

3900



← 1 Minute. →

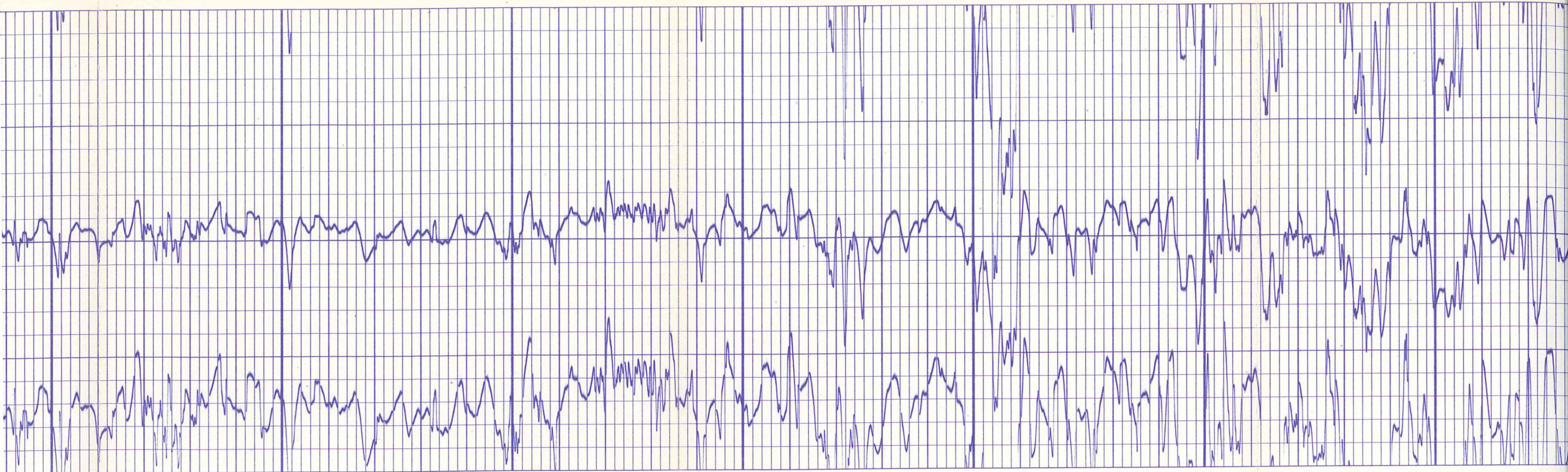


3900

4000

4100





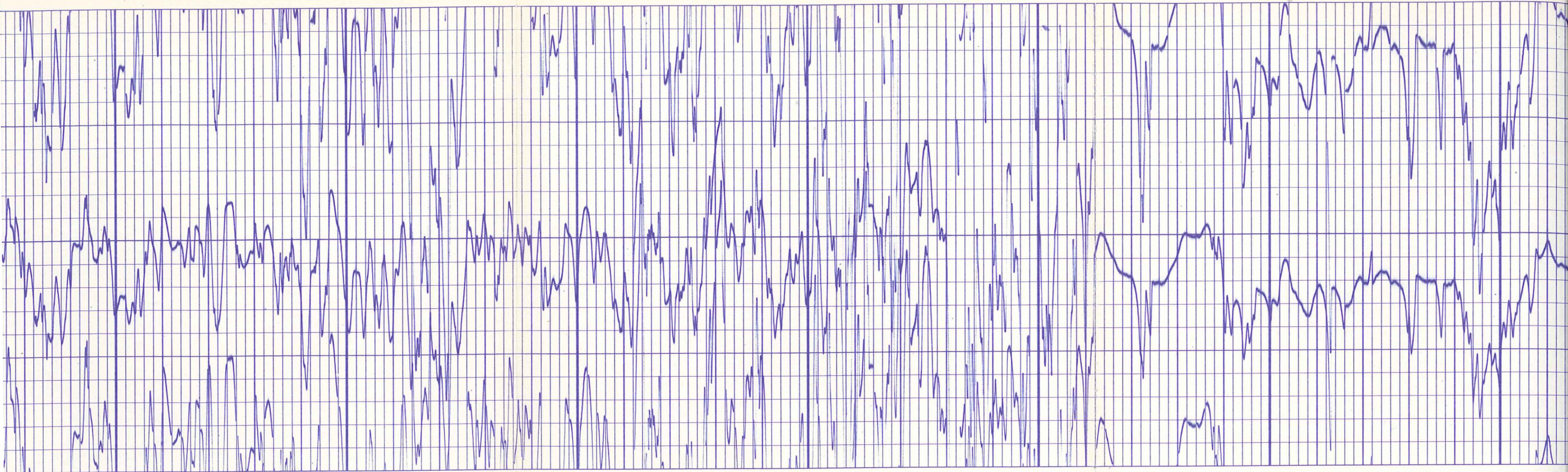
4200

4300

4400



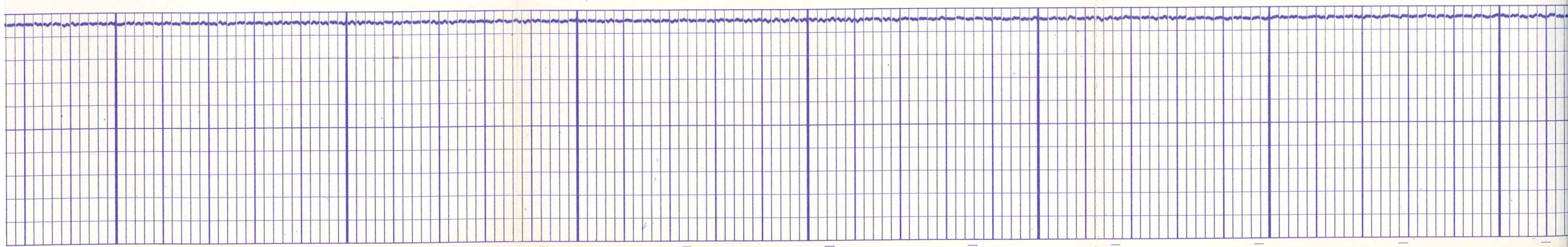


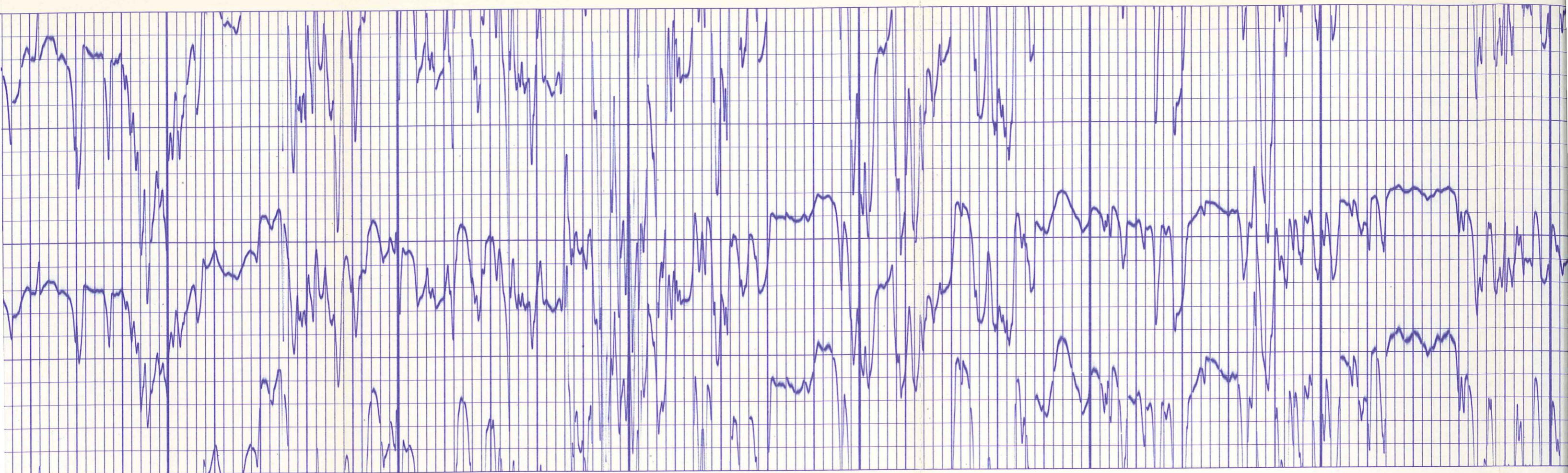


4500

4600

4700

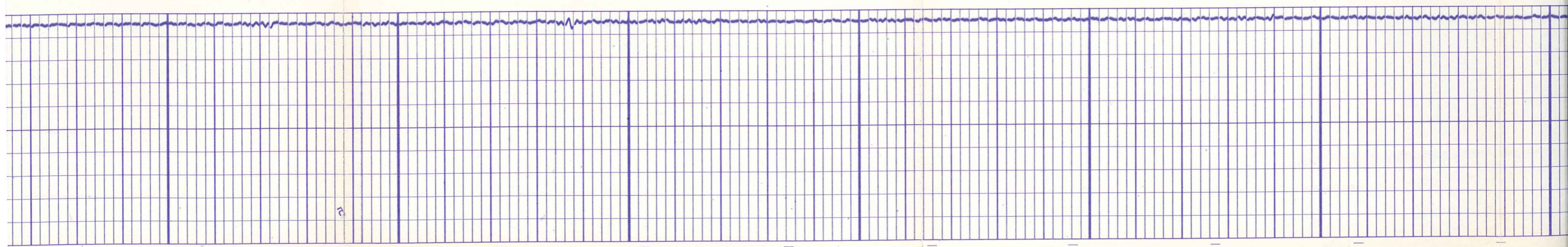




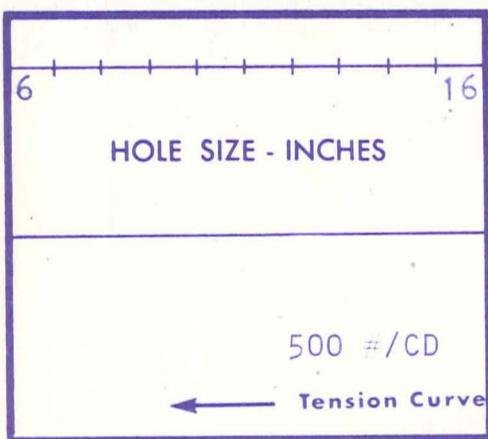
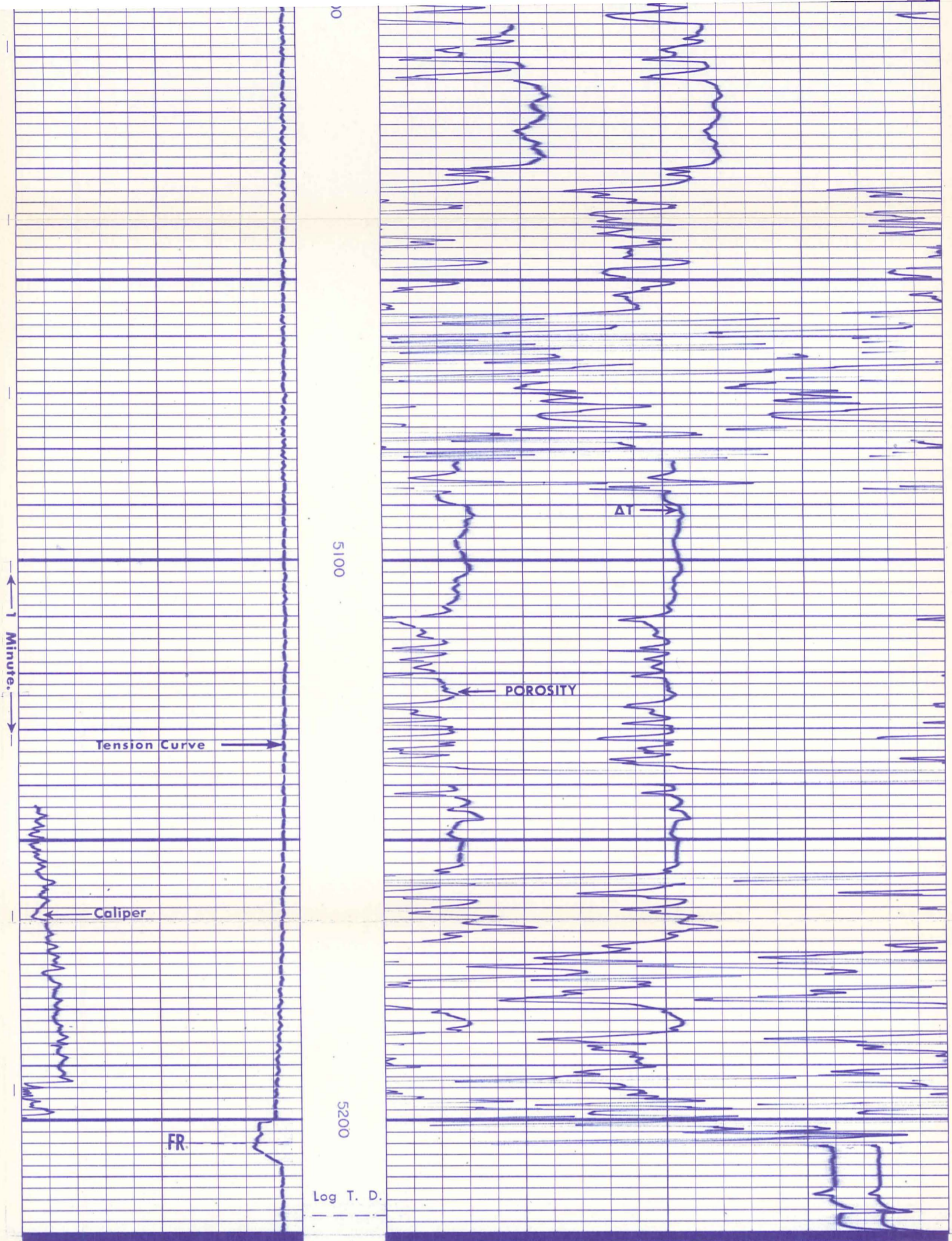
4800

4900

5000

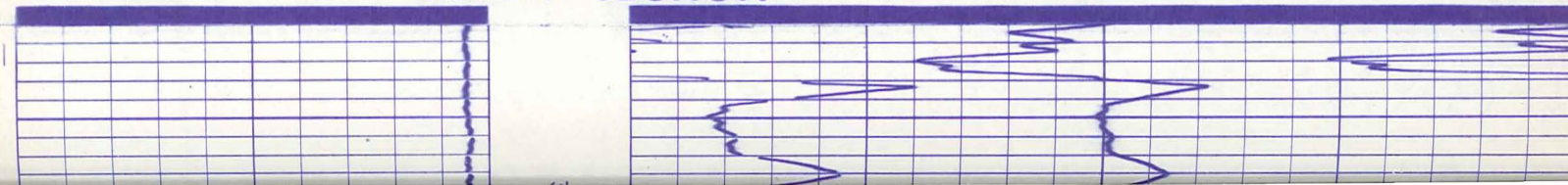


21



DEPTH		ACOUSTILOG	
		$T_1 \frac{4}{R_1} \frac{2}{R_2} \frac{4}{T_2}$	
Company	E.G. & G. IDAHO INC.	Drillers T.D.	5212
Well	RRGP-4A	Log F.R.	5208
Field	RAFT RIVER GEOTHERMAL	Log T.D.	5217
County	CASSIA	Elevations:	
State	IDAHO	K.B.	4856 D.F. 4855 G.L. 4840

**REPEAT SECTION**

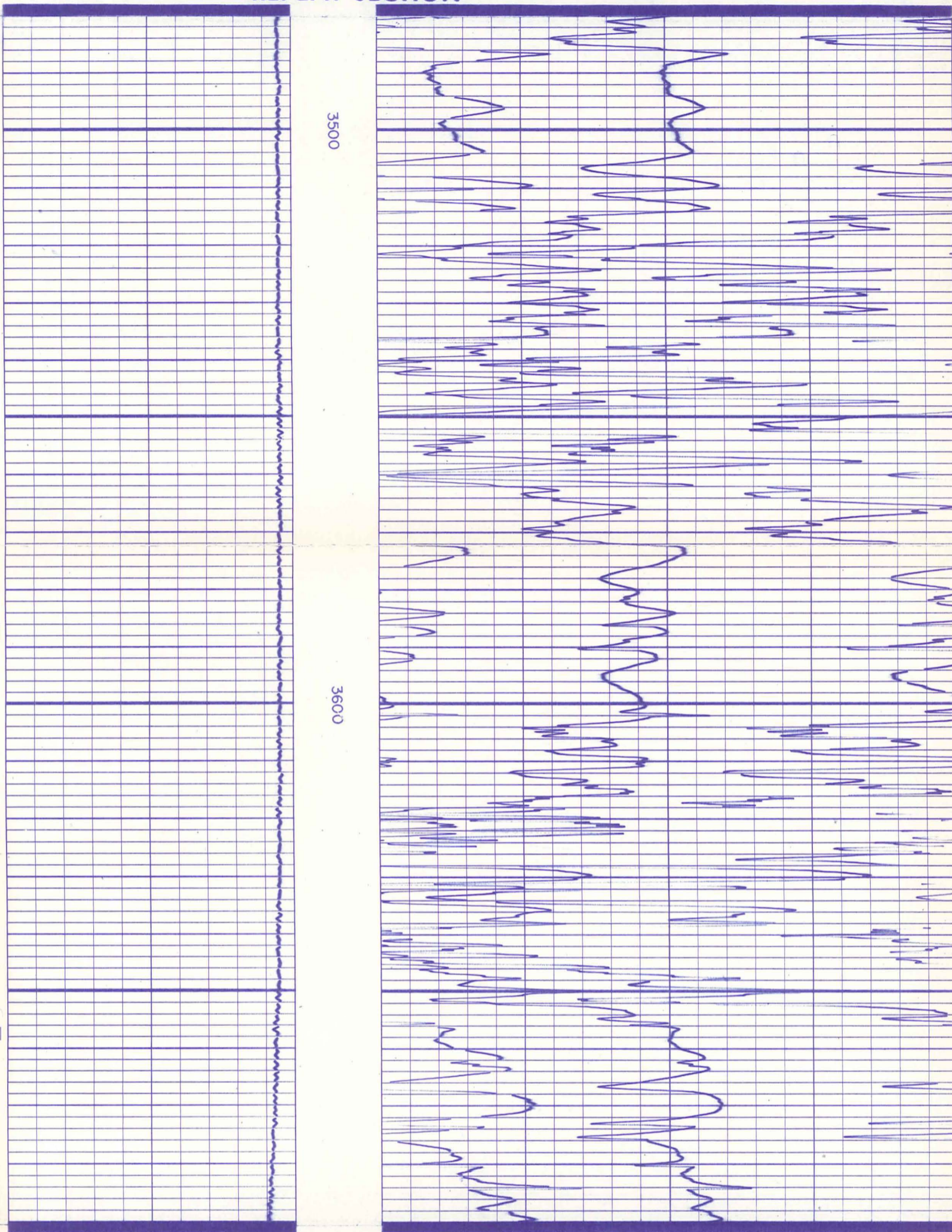


FORM 925191 A

Well RRGP-4A  
 Field RAFT RIVER GEOTHERMAL  
 County CASSIA  
 State IDAHO

Log F.R. 5208  
 Log T.D. 5217  
 Elevations:  
 K.B. 4856 D.F. 4855 G.L. 4840

**REPEAT SECTION**



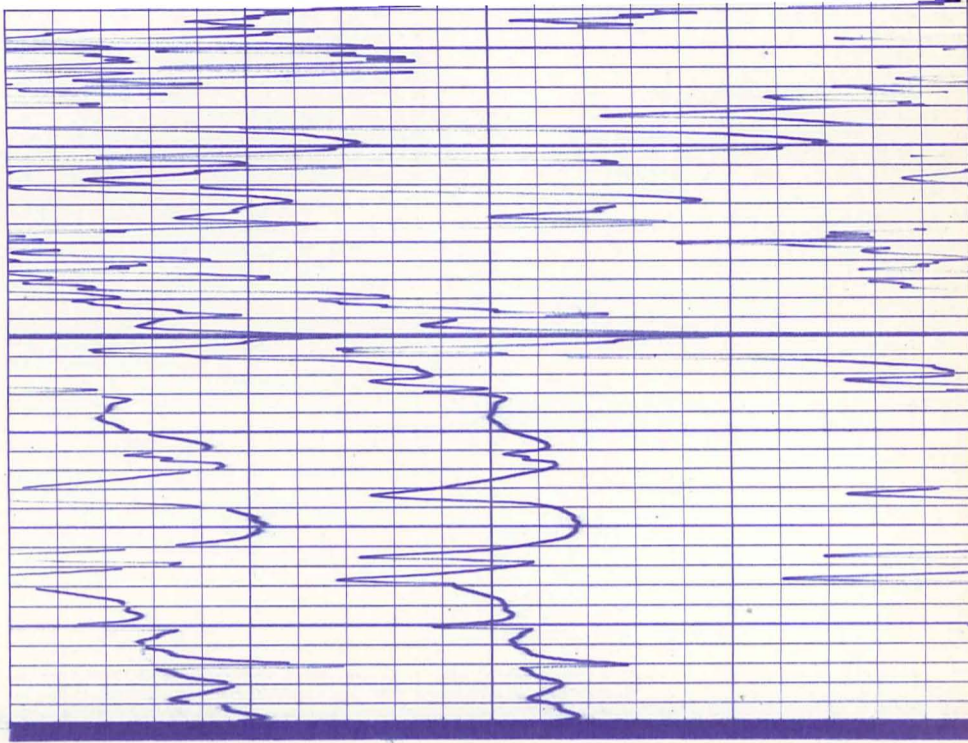
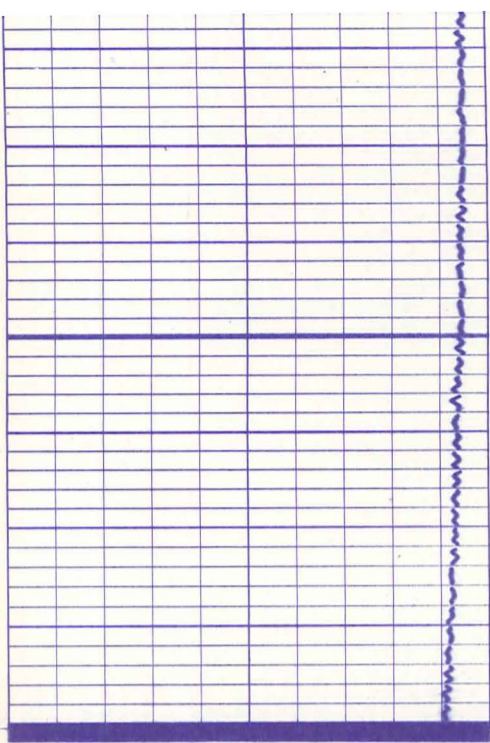
**CALIBRATION**

ACOUSTILOG

1. MECHANICAL ZERO
2. PANEL—LOW : 40 MSEC
3. PANEL—HIGH : 140 MSEC
4. PANEL—CAL : 50 MSEC
5. PANEL—CAL : 80 MSEC
6. PANEL—CAL : 100 MSEC

**CALIBRATION AFTER SURVEY**





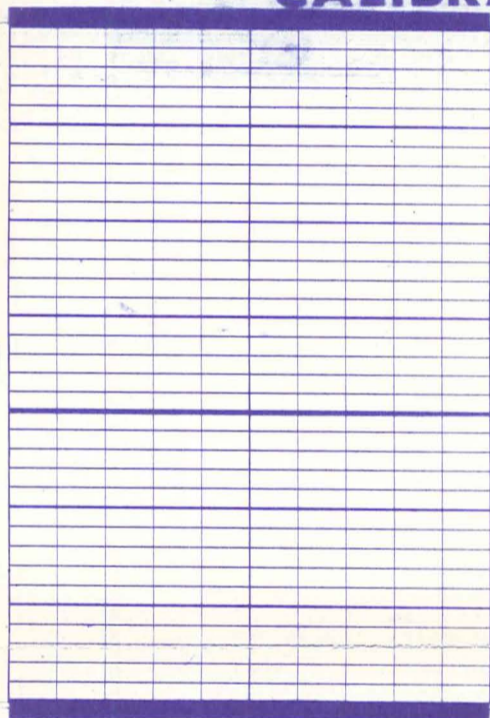
## CALIBRATION

ACOUSTILOG

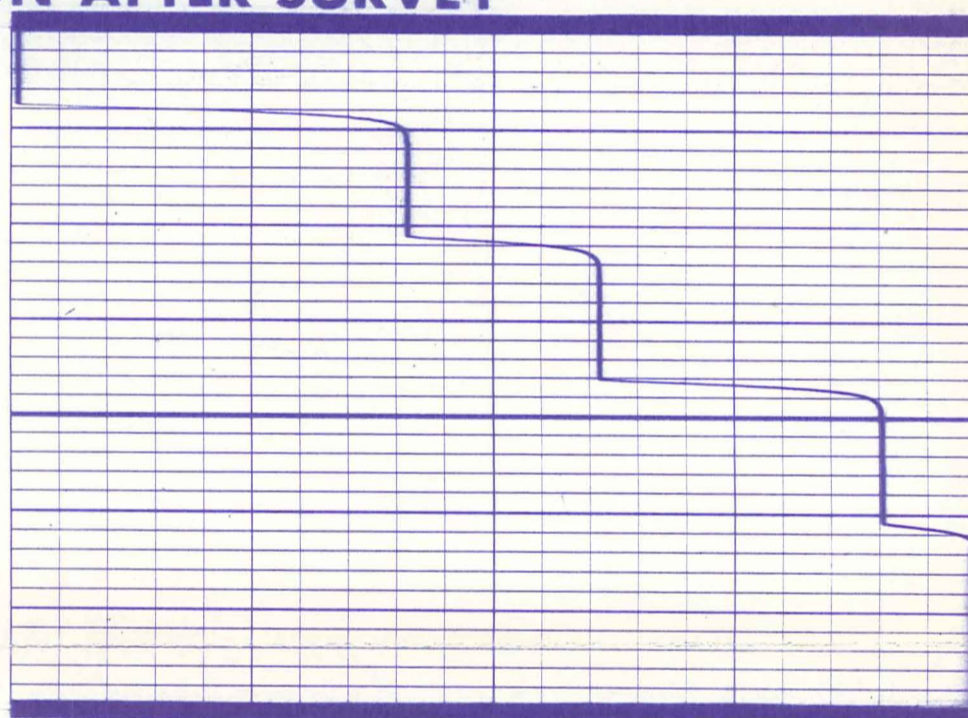
1. MECHANICAL ZERO
2. PANEL—LOW : 40 MSEC
3. PANEL—HIGH : 140 MSEC
4. PANEL—CAL : 50 MSEC
5. PANEL—CAL : 80 MSEC
6. PANEL—CAL : 100 MSEC

925275 GR

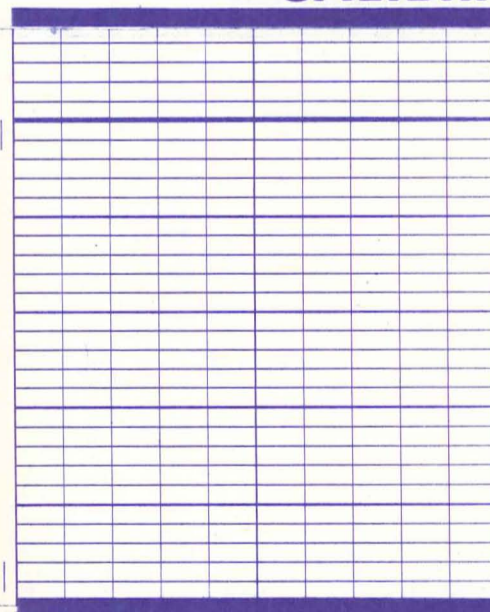
## CALIBRATION AFTER SURVEY



3  
6  
5  
4  
2  
1



## CALIBRATION BEFORE SURVEY



3  
6  
5  
4  
2  
1

