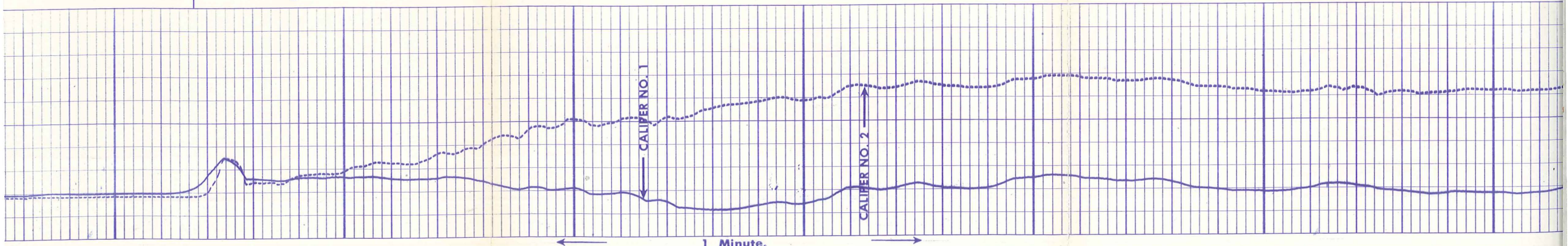


Casing

3500

3600

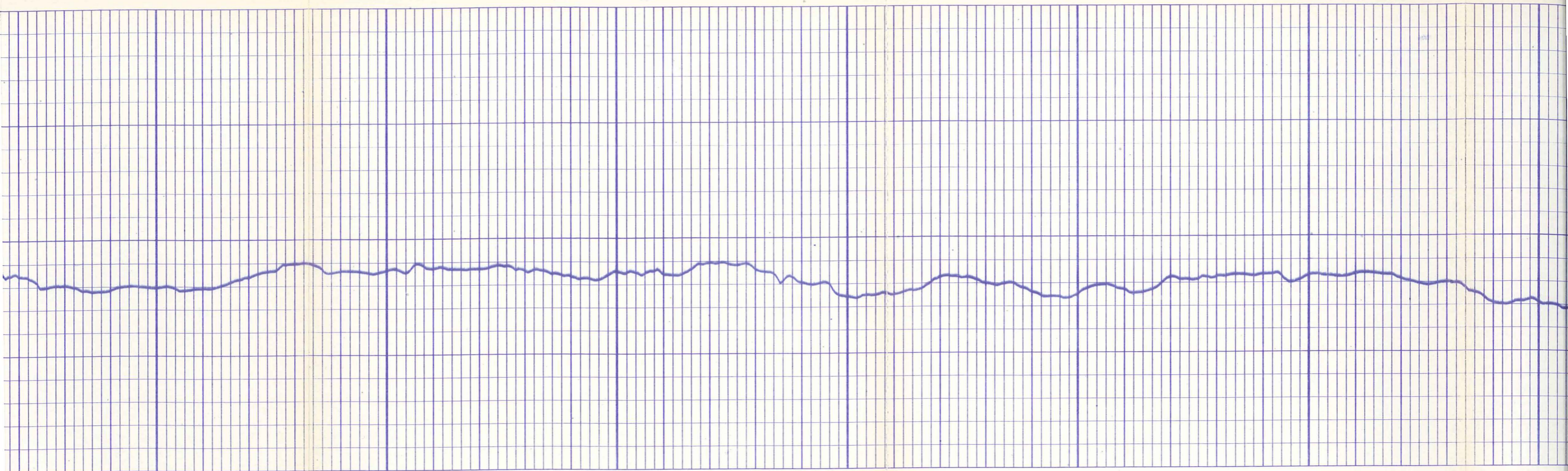
3700



CALIPER NO. 1

CALIPER NO. 2

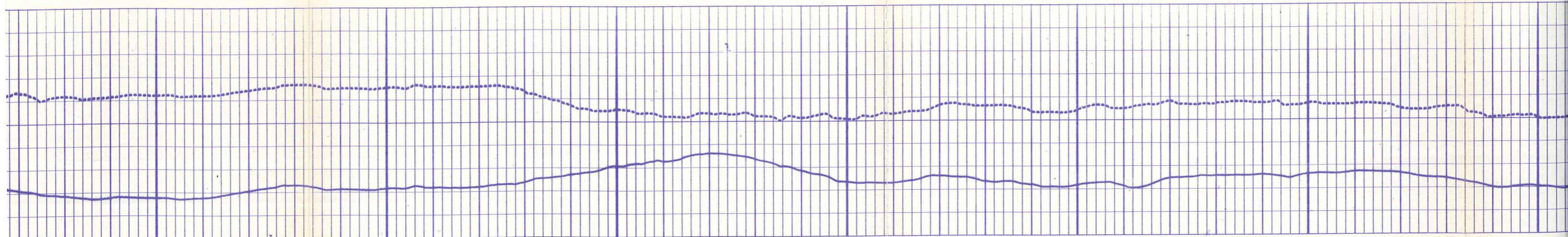
1 Minute.

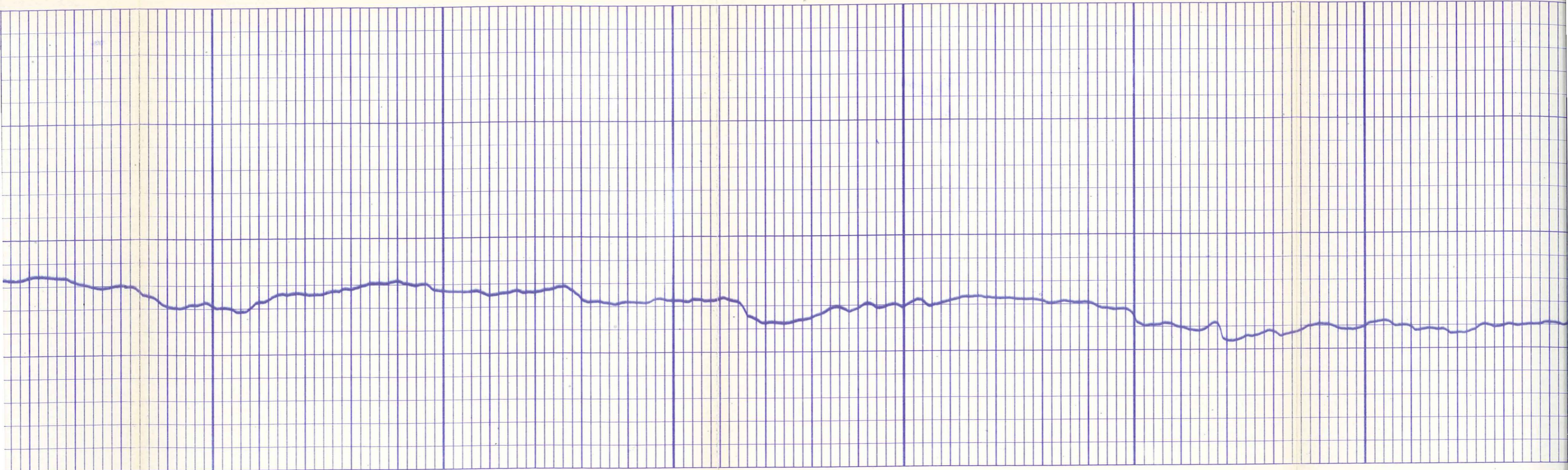


3800

3900

4000

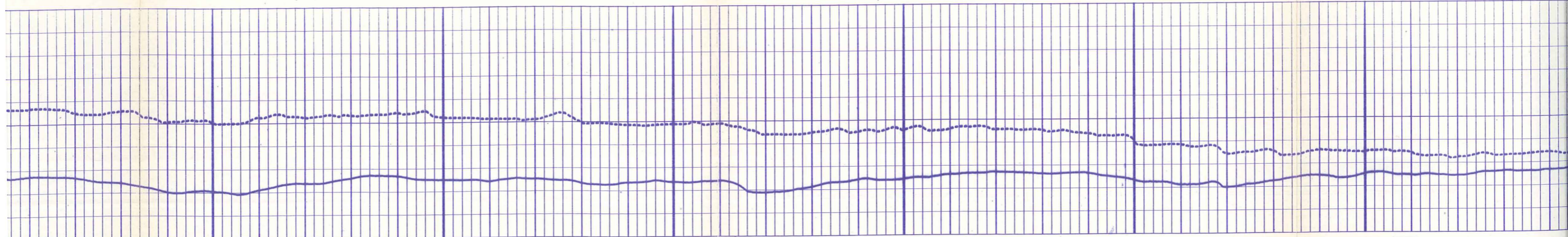




4100

4200

4300



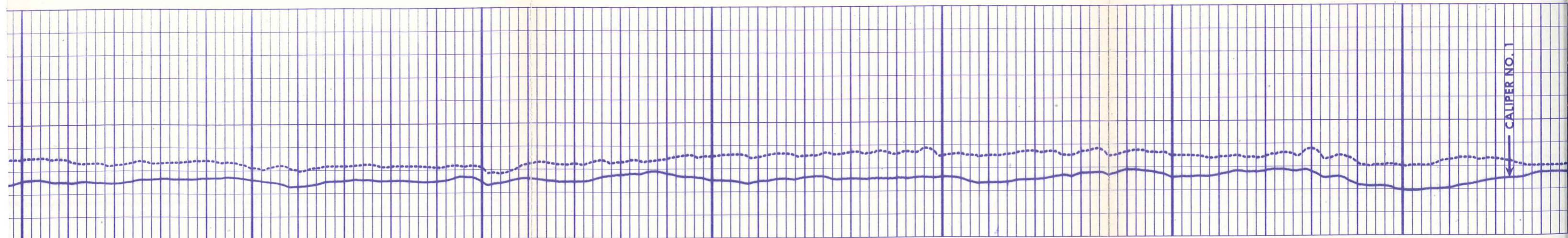


4300

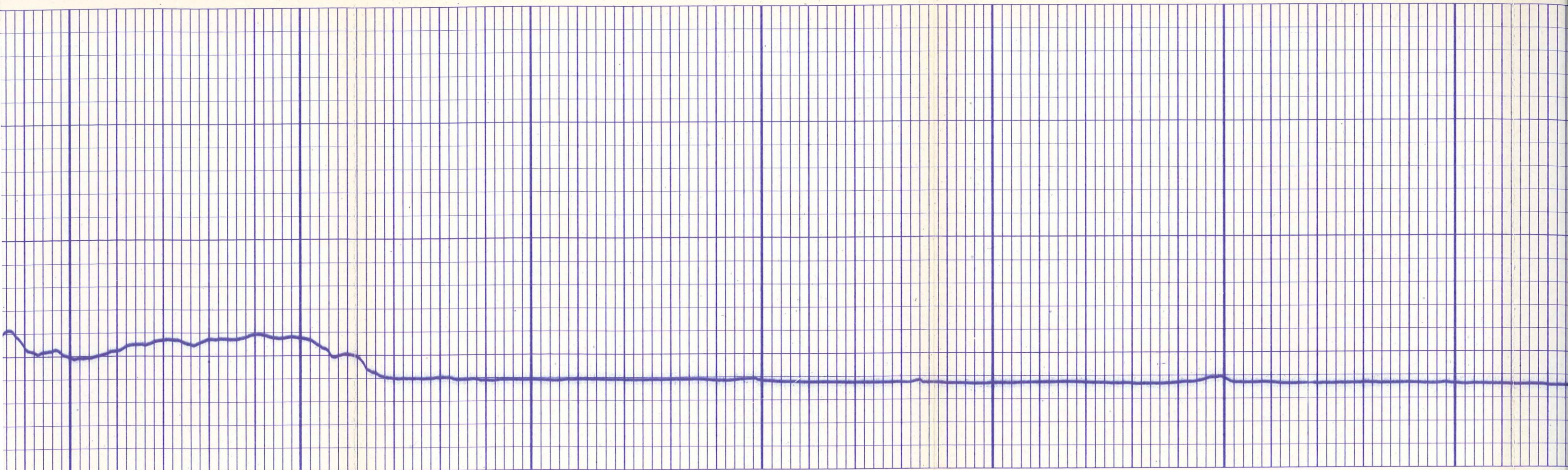
4400

4500

4600



— CALIPER NO. 1

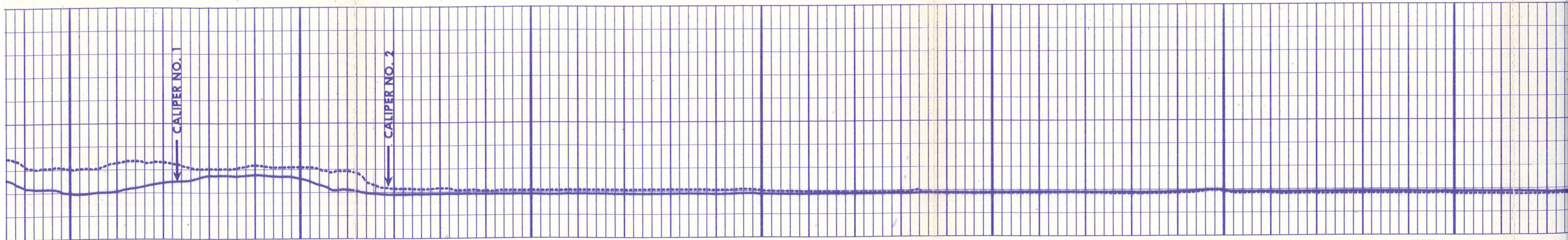


4600

4700

4800

4900



CALIPER NO. 1

CALIPER NO. 2



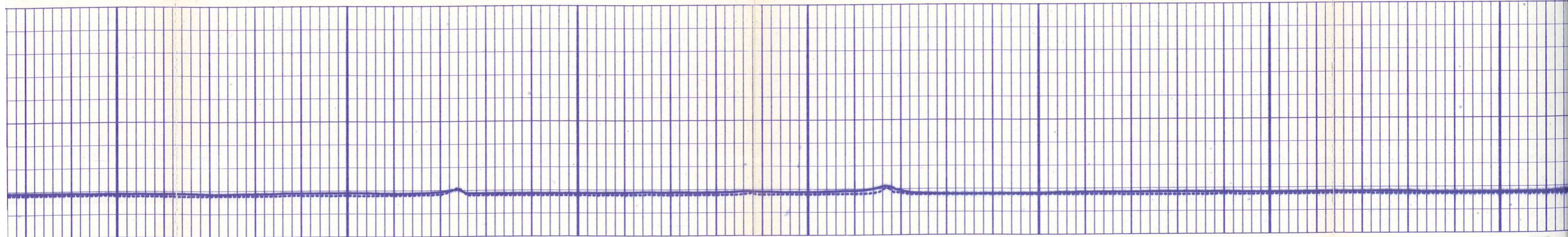
4900

5000

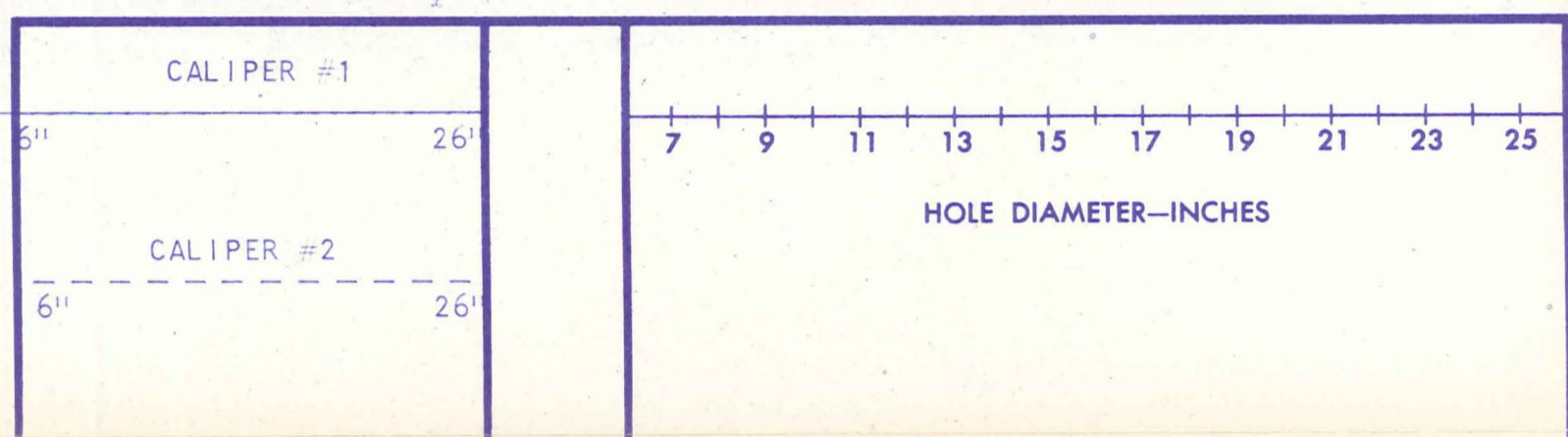
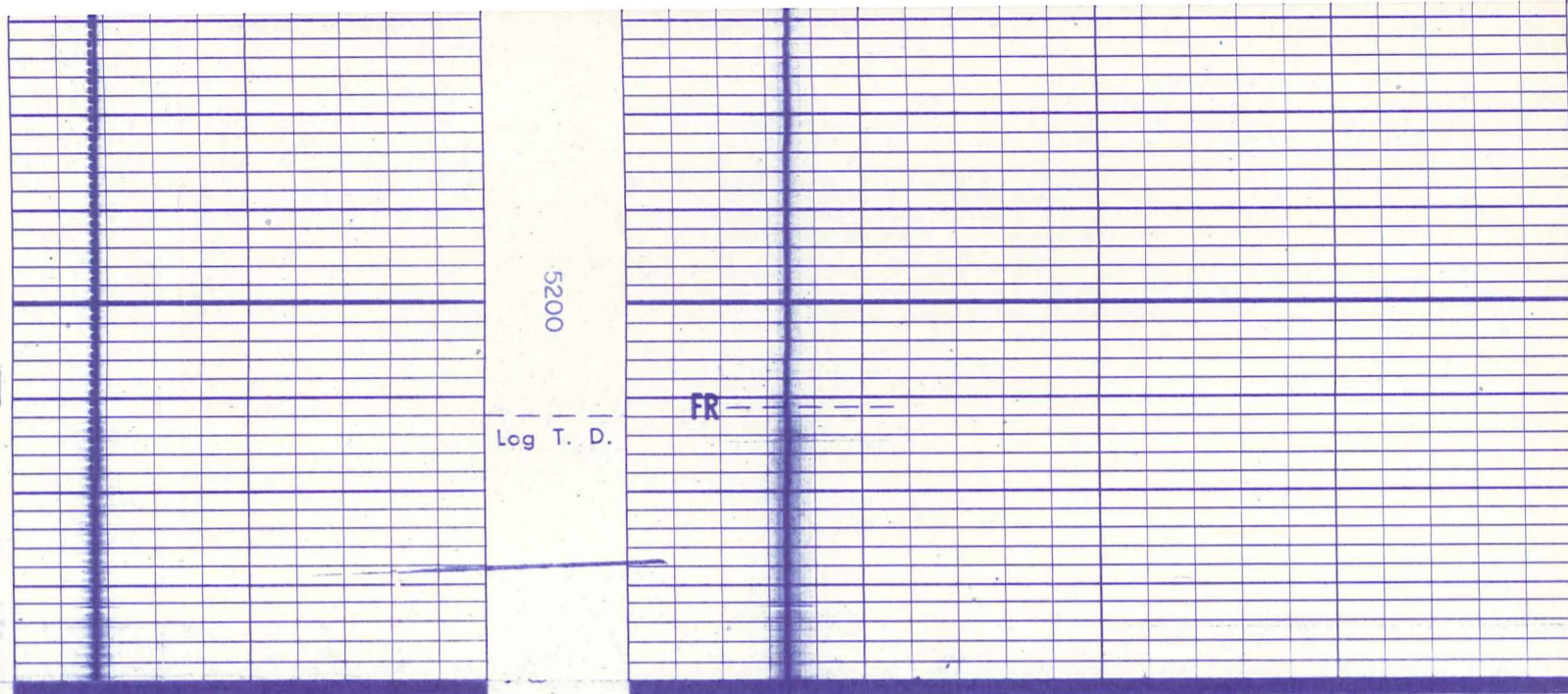
5100

5200

FR  
Leg. T. D.



1 Minute.



	DEPTH	AVERAGE CALIPER
Company	E. G. & G. IDAHO INC.	Drillers T.D. 5212
Well	RRGP-4A	Log F.R.
Field	RAFT RIVER GEOTHERMAL	Log T.D.
County	CASSIA	Elevations:
State	IDAHO	K.B. 4856    D.F. 4855    G.L. 4840

CALIBRATION

