



COMPENSATED **Densilog**

FILE NO. 541 COMPANY E. G. & G. IDAHO INC.
WELL R.R.G.I. #7
FIELD RAFT RIVER GEOTHERMAL
COUNTY CASSIA STATE IDAHO
LOCATION: SEC 23 TWP 15S RGE 26E
Other Services
DIFF. TEMP.
DIFL
CNI. OG
BHC/GR

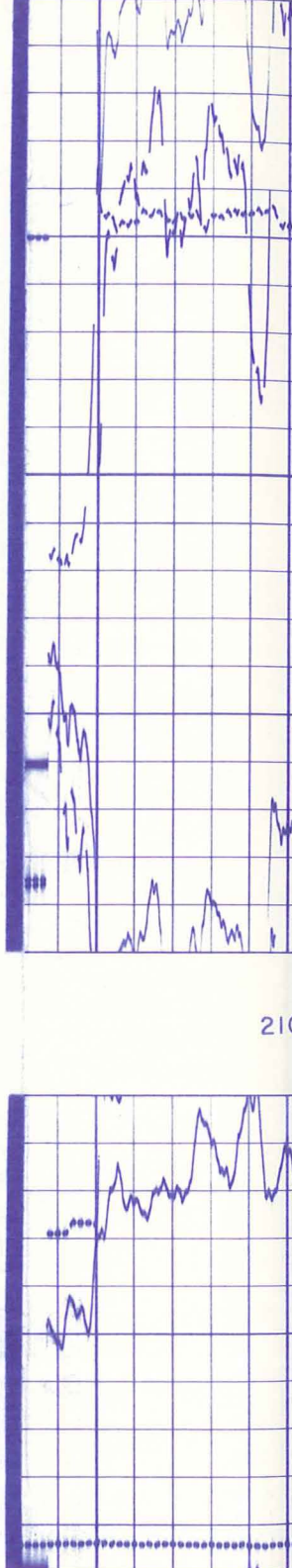
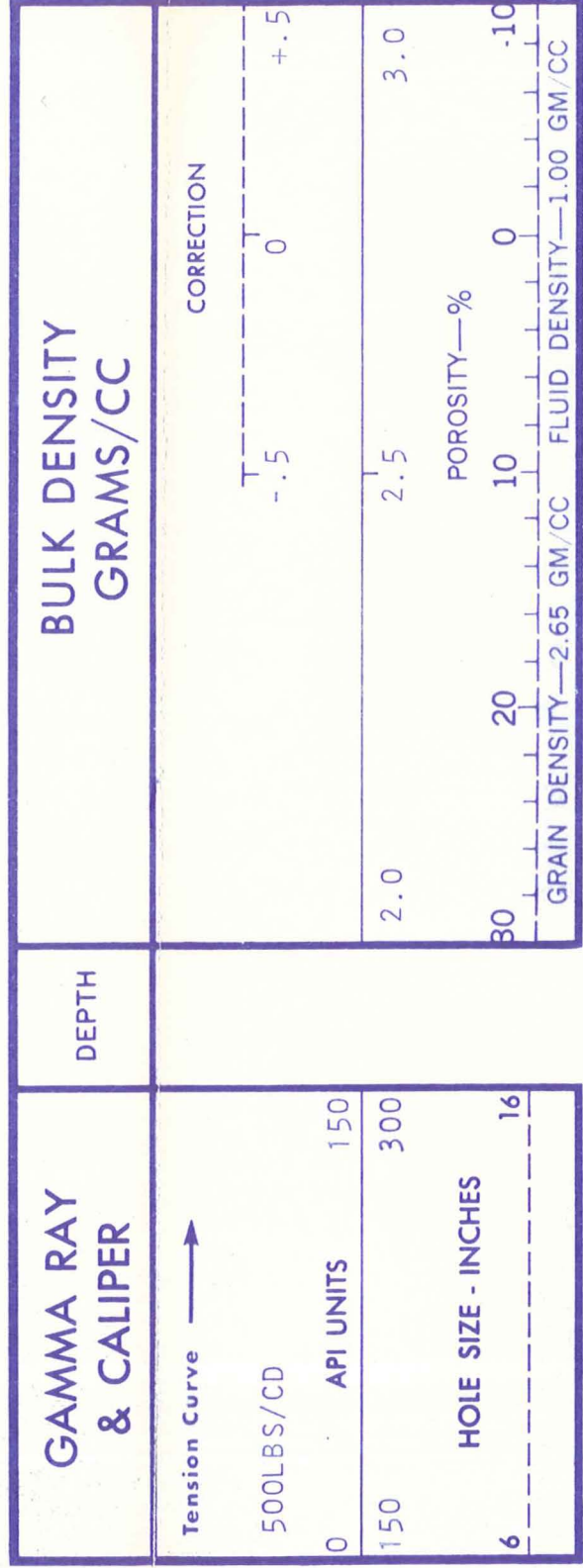
Permanent Datum G.L. Elev. 4855
Log Measured from K.B., 16 Ft. Above Permanent Datum
Drilling Measured from K.B.
Elevations:
KB 4871
DF 4870
GL 4855

Date	<u>8/2/78</u>	
Run No.	<u>TWO</u>	
Depth—Driller	<u>3858</u>	
Depth—Logger	<u>3798</u>	
Bottom Logged Interval	<u>3796</u>	
Top Logged Interval	<u>2049</u>	
Casing—Driller	<u>13 3/8</u>	<u>@ 2044</u>
Casing—Logger	<u>2049</u>	
Bit Size	<u>12 1/4"</u>	
Type Fluid in Hole	<u>WATER</u>	
Density and Viscosity		
pH and Fluid Loss	cc	cc
Source of Sample	<u>FLOW LINE</u>	
Rm @ Meas. Temp.	<u>4.6 @ 92 °F</u>	<u>@ °F</u>
Rmf @ Meas. Temp.	<u>@ °F</u>	<u>@ °F</u>
Rmc @ Meas. Temp.	<u>@ °F</u>	<u>@ °F</u>
Source of Rmf and Rmc		
Rm @ BHT	<u>2.84 @ 149 °F</u>	<u>@ °F</u>
Time Since Circ.	<u>10 HRS</u>	
Max. Rec. Temp. Deg. F.	<u>149 °F</u>	
Equip. No. and Location	<u>H1.6159 RSVT</u>	
Recorded By	<u>PERESSINI - TORGERSON</u>	
Witnessed By	<u>PRESTWICH</u>	

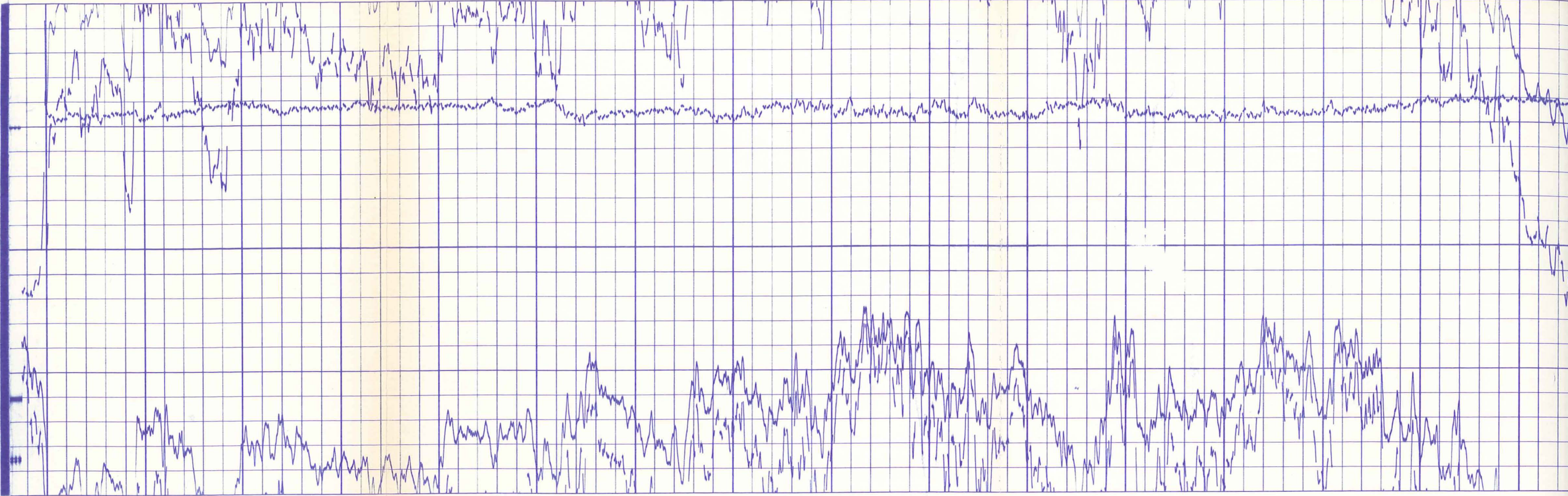
FOLD HERE

Run No.	Tool Model No.	Serial No.	Diam.	Detect. Model No.	Type	Length	Dist. to Source	Equipment Used				Sens. Settings	Zero Div. L or R	API G.R. Units/Div.				
								Series No.	Run No.	S.O.	Tool No.				Elec. No.	Panel No.	Gamma Ray	Densilog
<u>2</u>	<u>1305</u>	<u>29719</u>	<u>3 5/8"</u>	<u>D6G4</u>	<u>SCINT.</u>	<u>6"</u>	<u>14'</u>	<u>2208</u>	<u>TWO</u>	<u>2208</u>	<u>29227</u>	<u>3"</u>	<u>3457</u>	<u>37004</u>	<u>C-116</u>	<u>411</u>	<u>0</u>	<u>15</u>
General Hoist Truck No. <u>HL6159</u> Auxiliary Equipment																		

Run No.	Speed		T.C. Sec.	Density Scale	Correction Scale	Porosity Scale Data	Logging Data				
	From	To					Gamma Ray	Densilog	Gamma Ray	Densilog	
<u>2</u>	<u>3800</u>	<u>2050</u>	<u>30</u>	<u>2</u>	<u>2.0-3.0</u>	<u>- .5 to + .5</u>	<u>0-30%</u>	<u>2</u>	<u>411</u>	<u>0</u>	<u>15</u>



POROSITY—%
FLUID DENSITY—1.00 GM/CC
GRAIN DENSITY—2.65 GM/CC



2100

2200

2300

2400

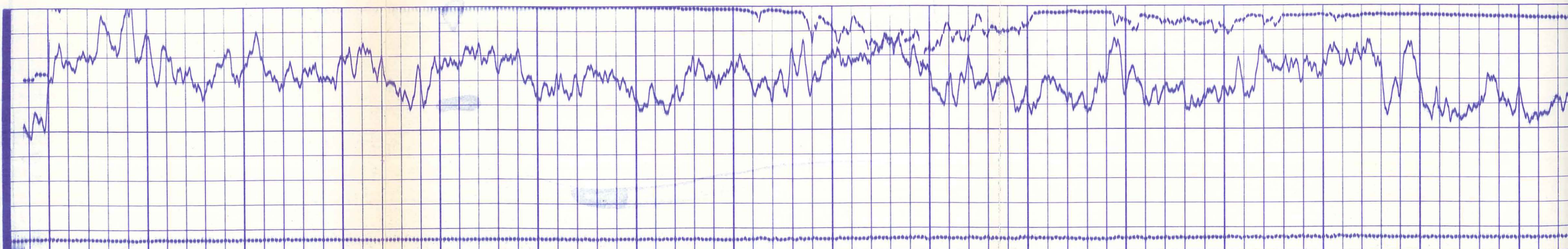
2500

2600

2700

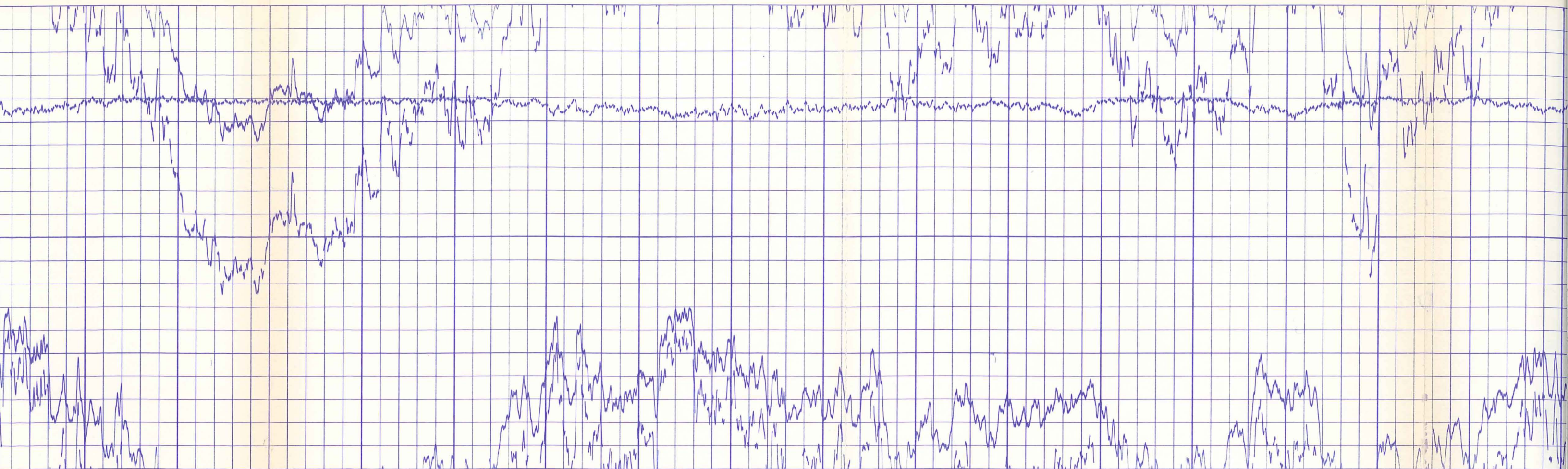
2800

HOLE SIZE - INCHES



16

6



2800

2900

3000

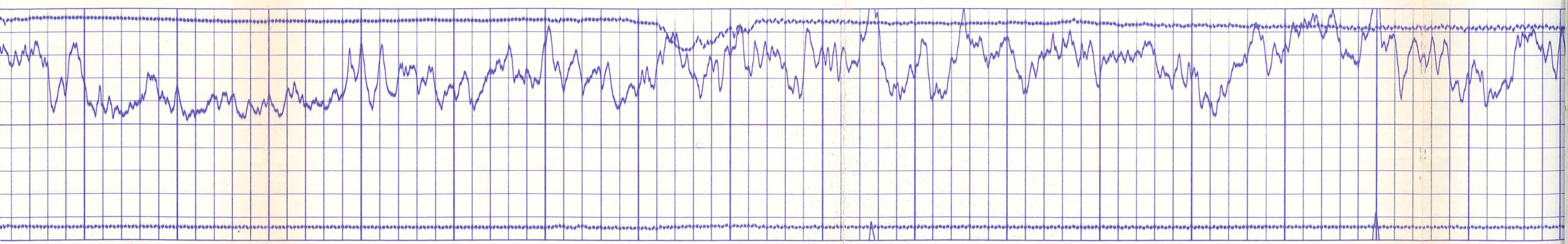
3100

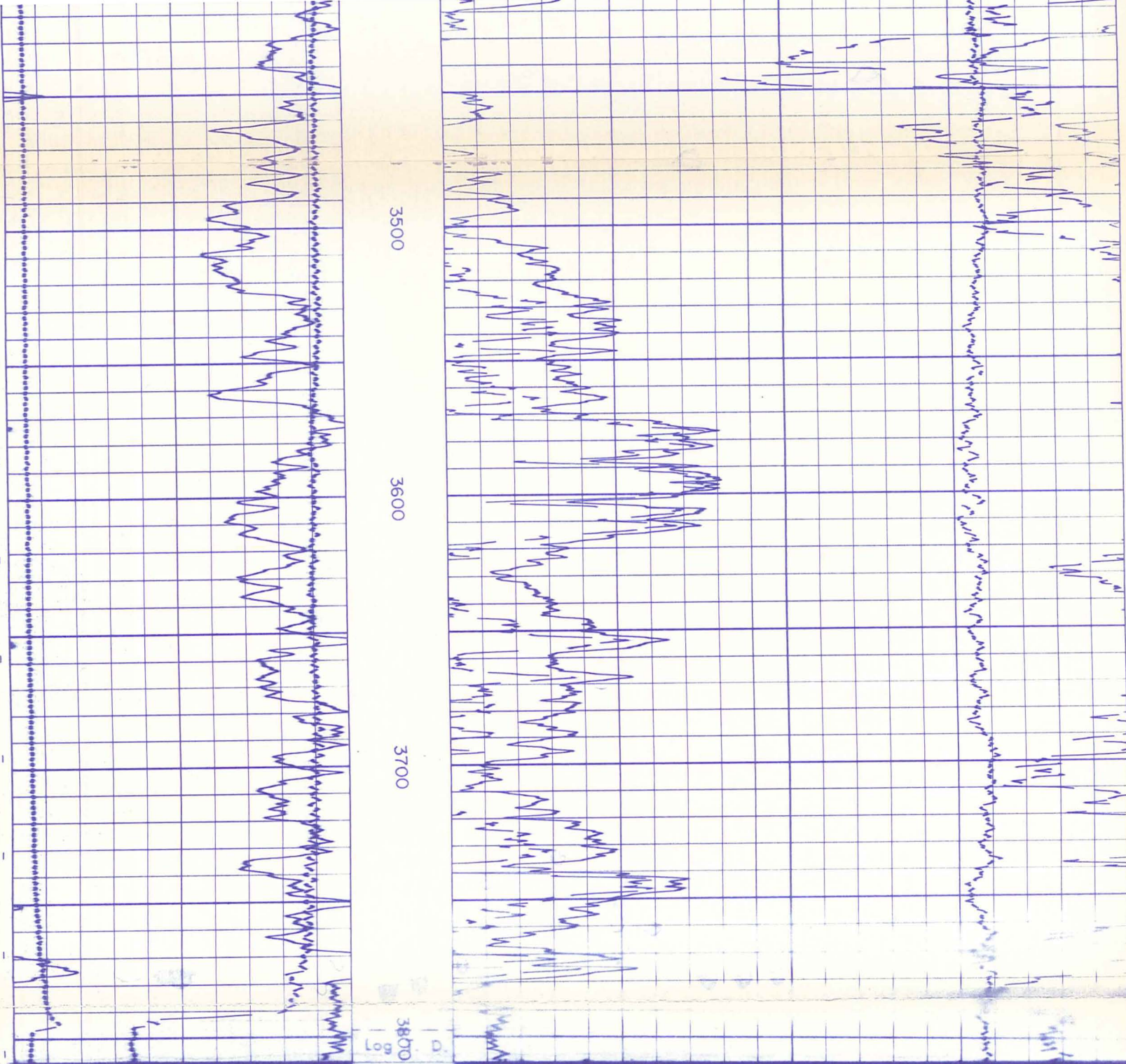
3200

3300

3400

3500





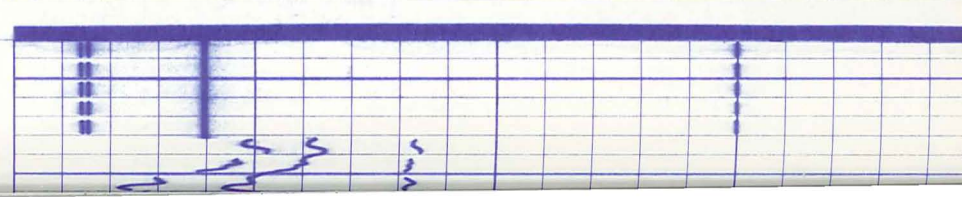
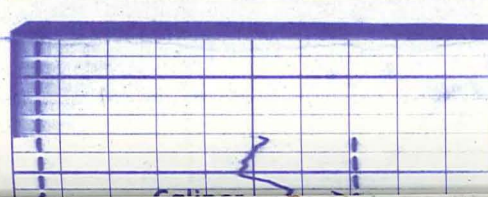
6	16
HOLE SIZE - INCHES	
150	300
0	150
API UNITS	
500LBS/CD	
Tension Curve →	

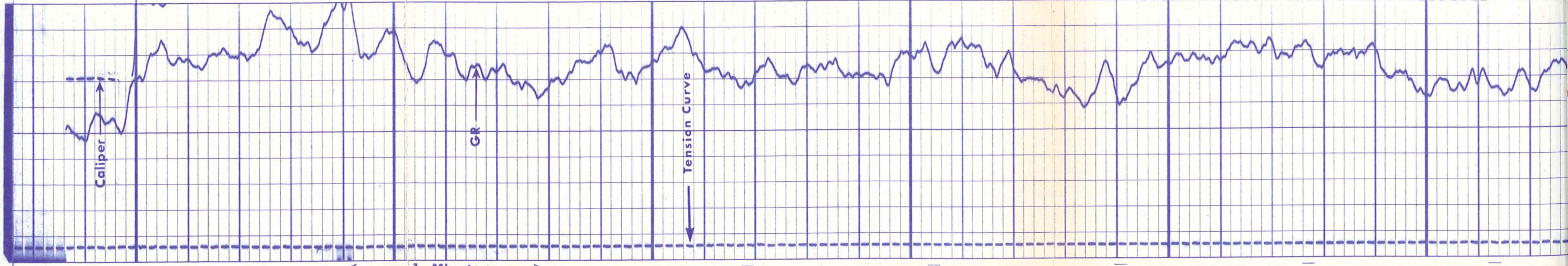
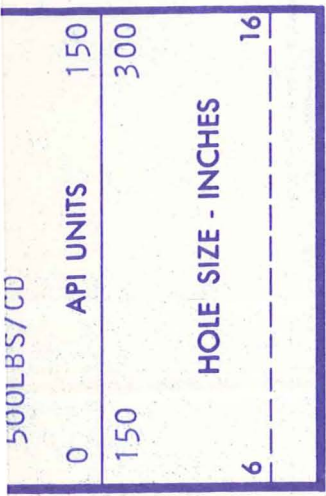
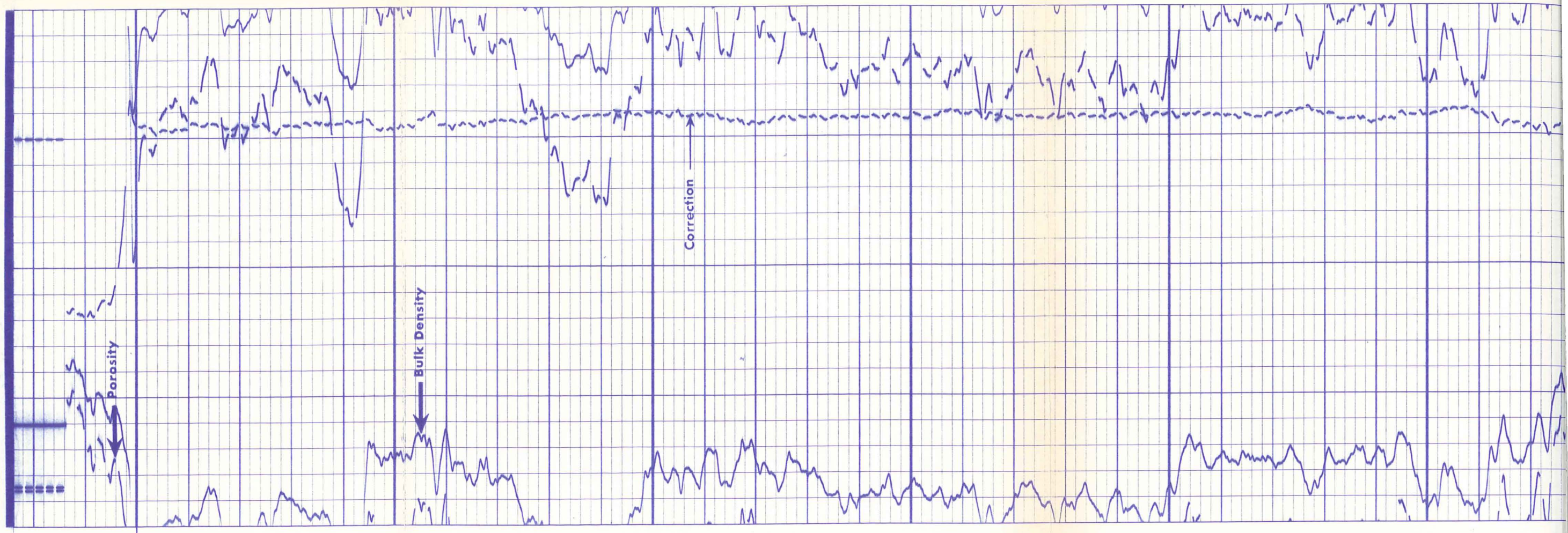
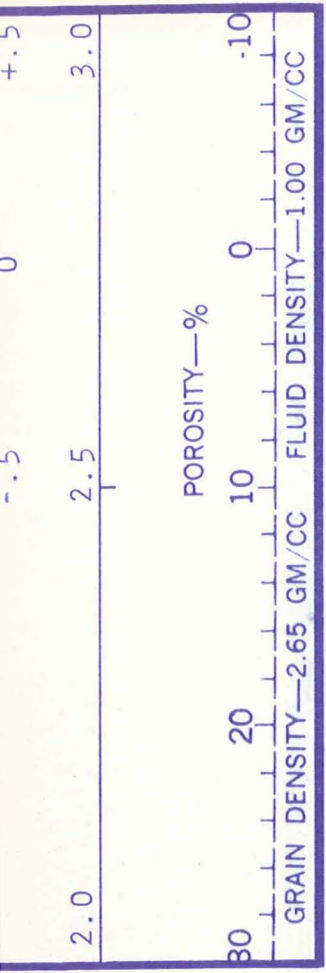
POROSITY—%		
30	20	10
0	-10	
GRAIN DENSITY—2.65 GM/CC FLUID DENSITY—1.00 GM/CC		
2.0	2.5	3.0
CORRECTION		
-0.5	0	+0.5

GAMMA RAY & CALIPER	DEPTH	BULK DENSITY GRAMS/CC
Company	E. G. & G. IDAHO INC.	Drillers T.D. 3858
Well	R.R.G.I. #7	Log F.R. 3796
Field	RAFT RIVER GEOTHERMAL	Log T.D. 3798
County	CASSIA	Elevations:
State	IDAHO	K.B. 4871 D.F. 4870 G.L. 4855

GAMMA RAY & CALIPER	
Tension Curve →	
500LBS/CD	
0	150
API UNITS	
150	300
HOLE SIZE - INCHES	
6	16

CORRECTION		
-0.5	0	+0.5
2.0	2.5	3.0
POROSITY—%		
30	20	10
0	-10	
GRAIN DENSITY—2.65 GM/CC FLUID DENSITY—1.00 GM/CC		





Casing

2100

2200

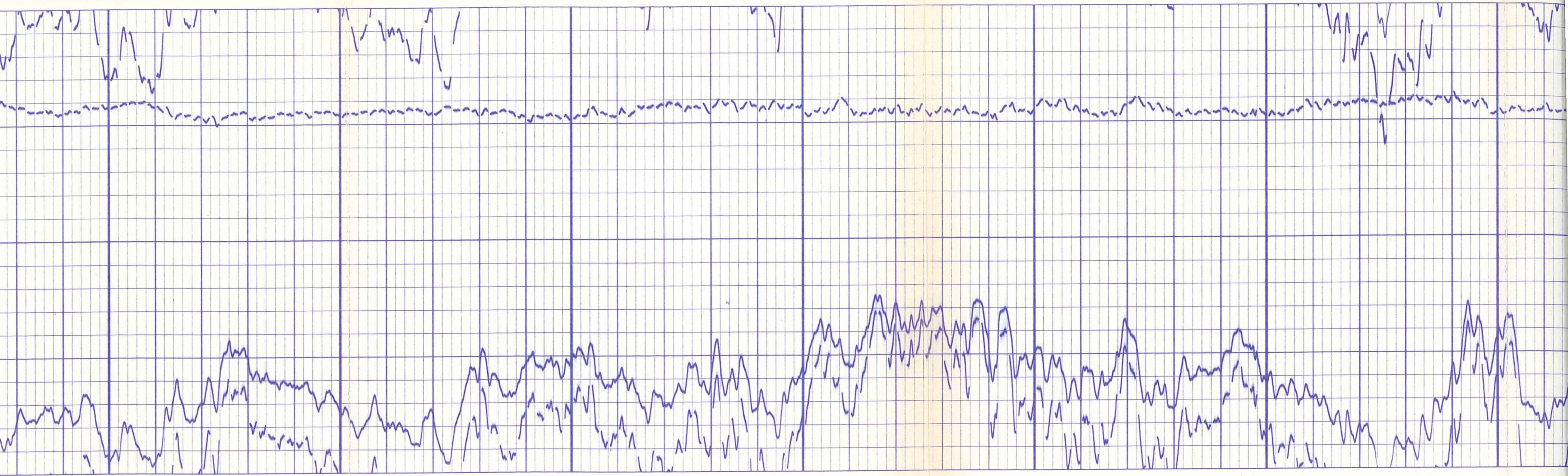
2300

Caliper

GR

Tension Curve

1 Minute.

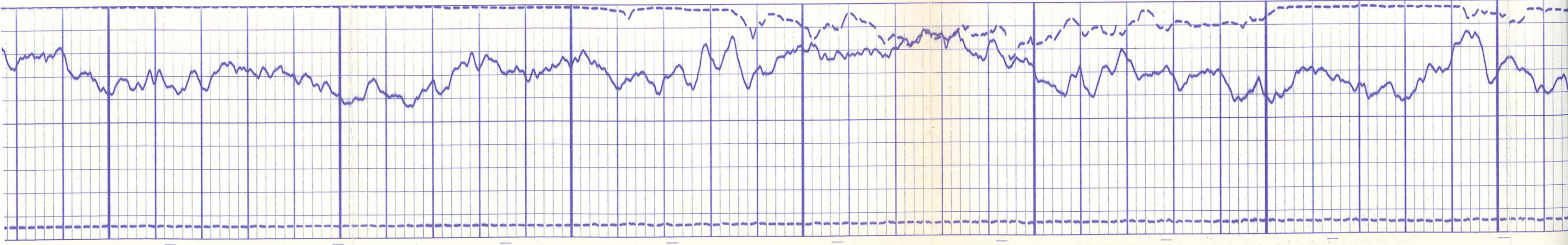


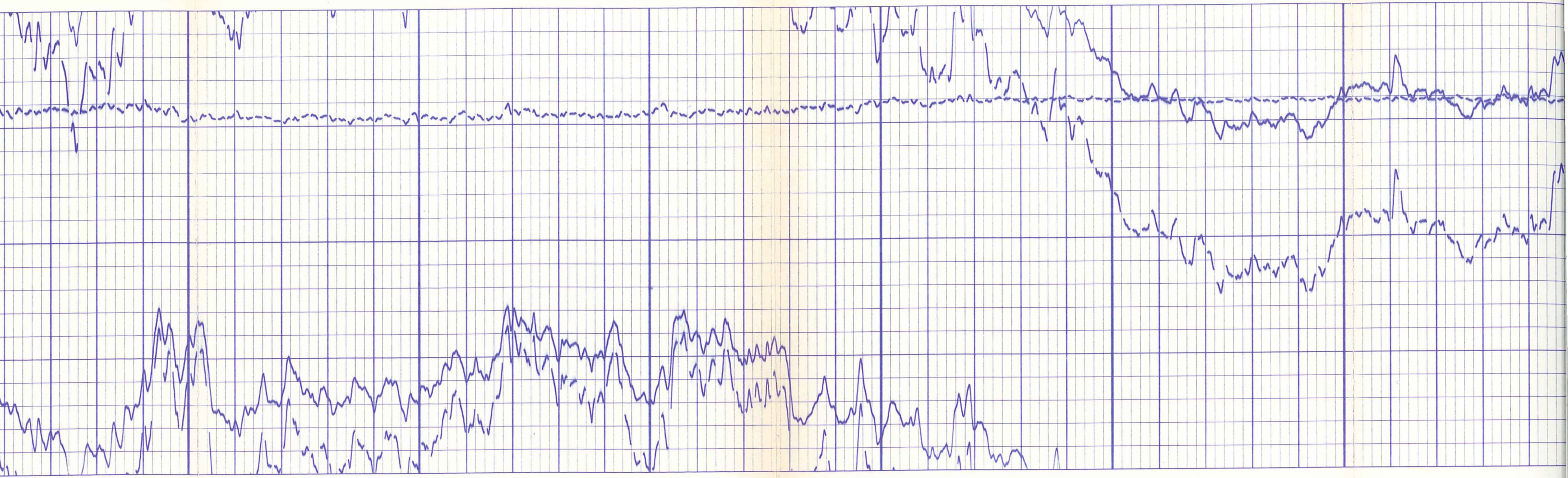
2300

2400

2500

2600





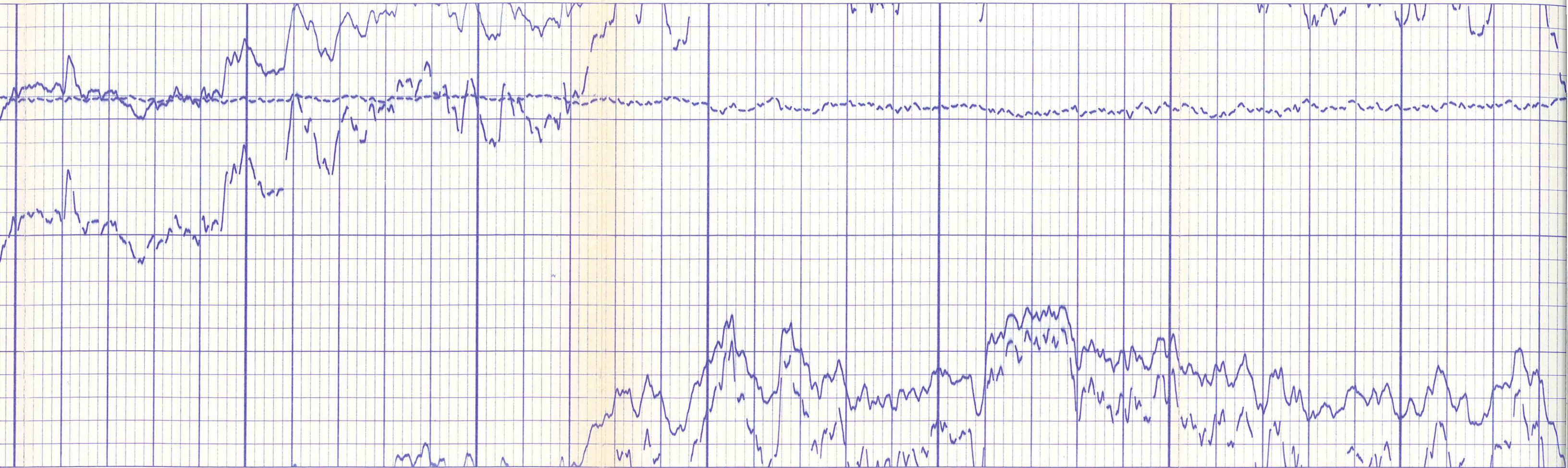
2600

2700

2800

2

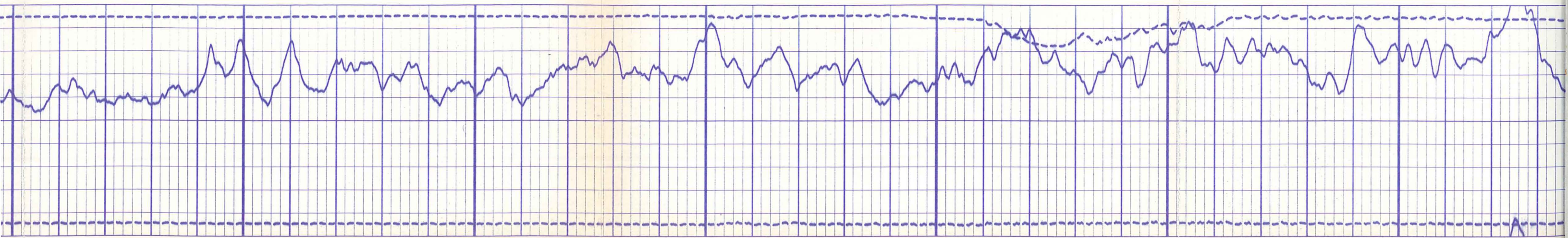


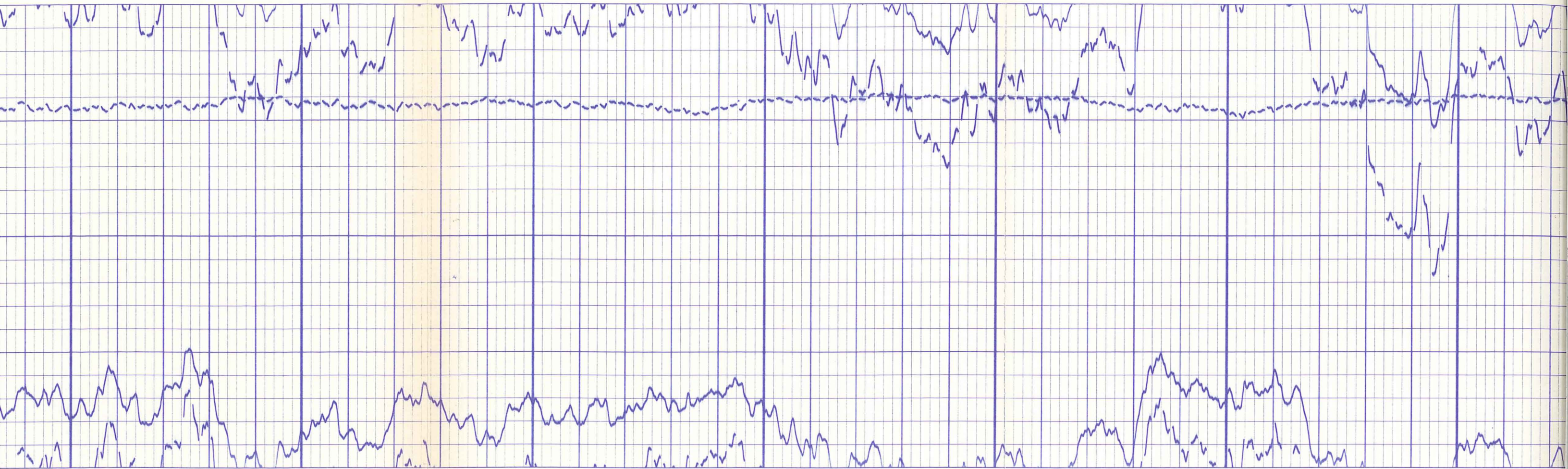


2900

3000

3100

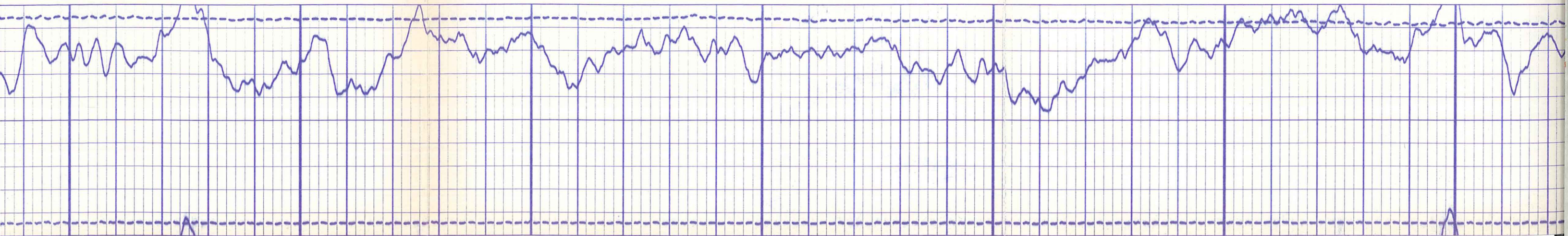


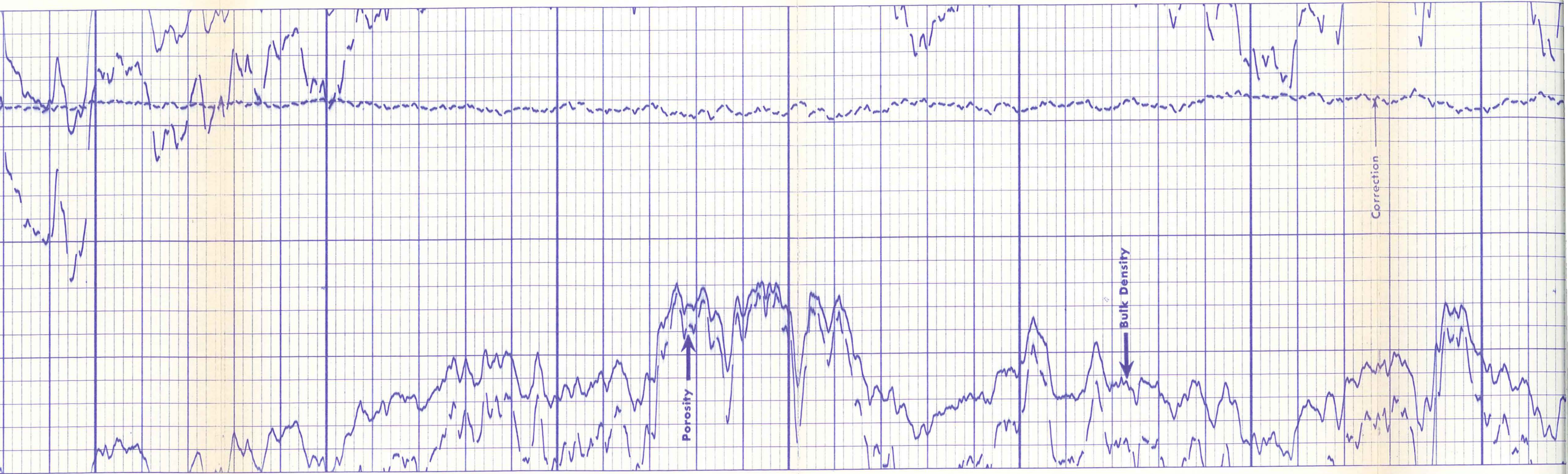


3200

3300

3400

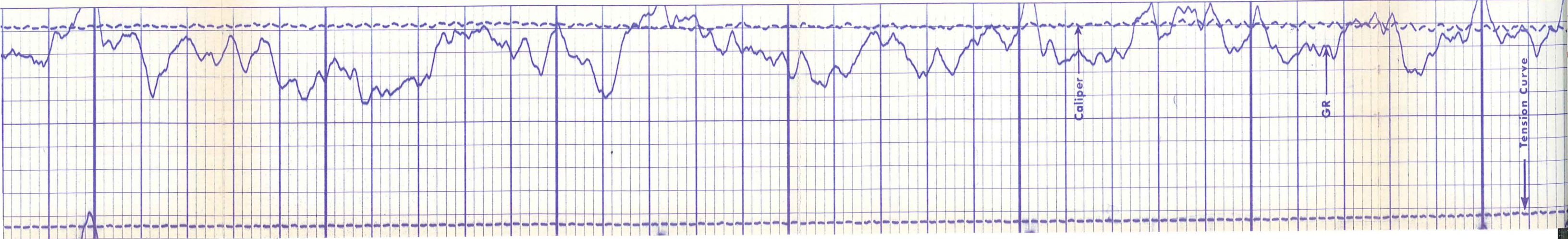


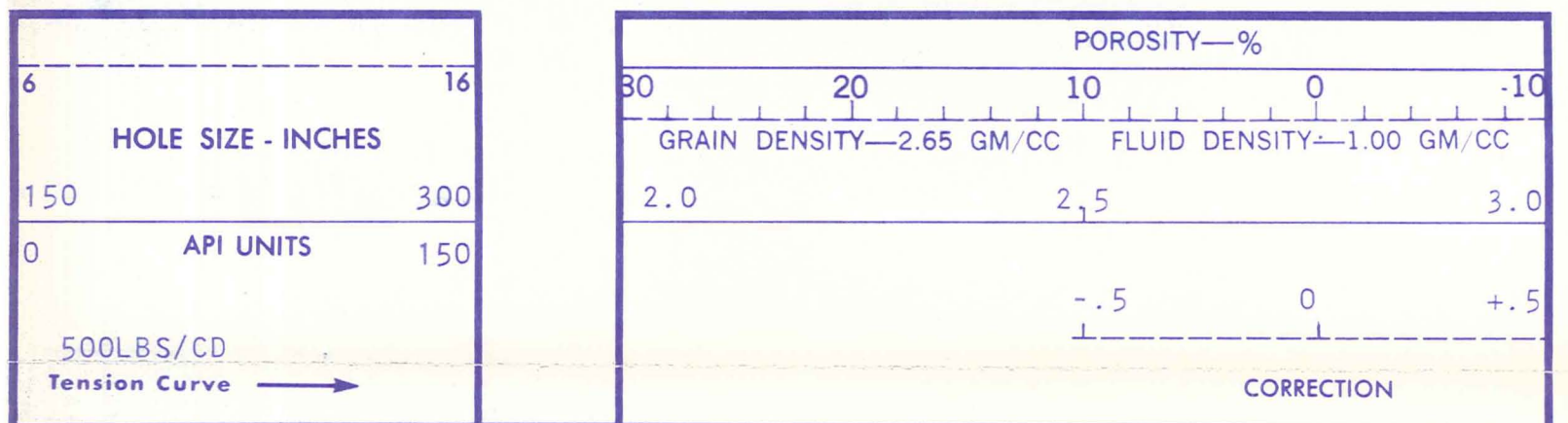
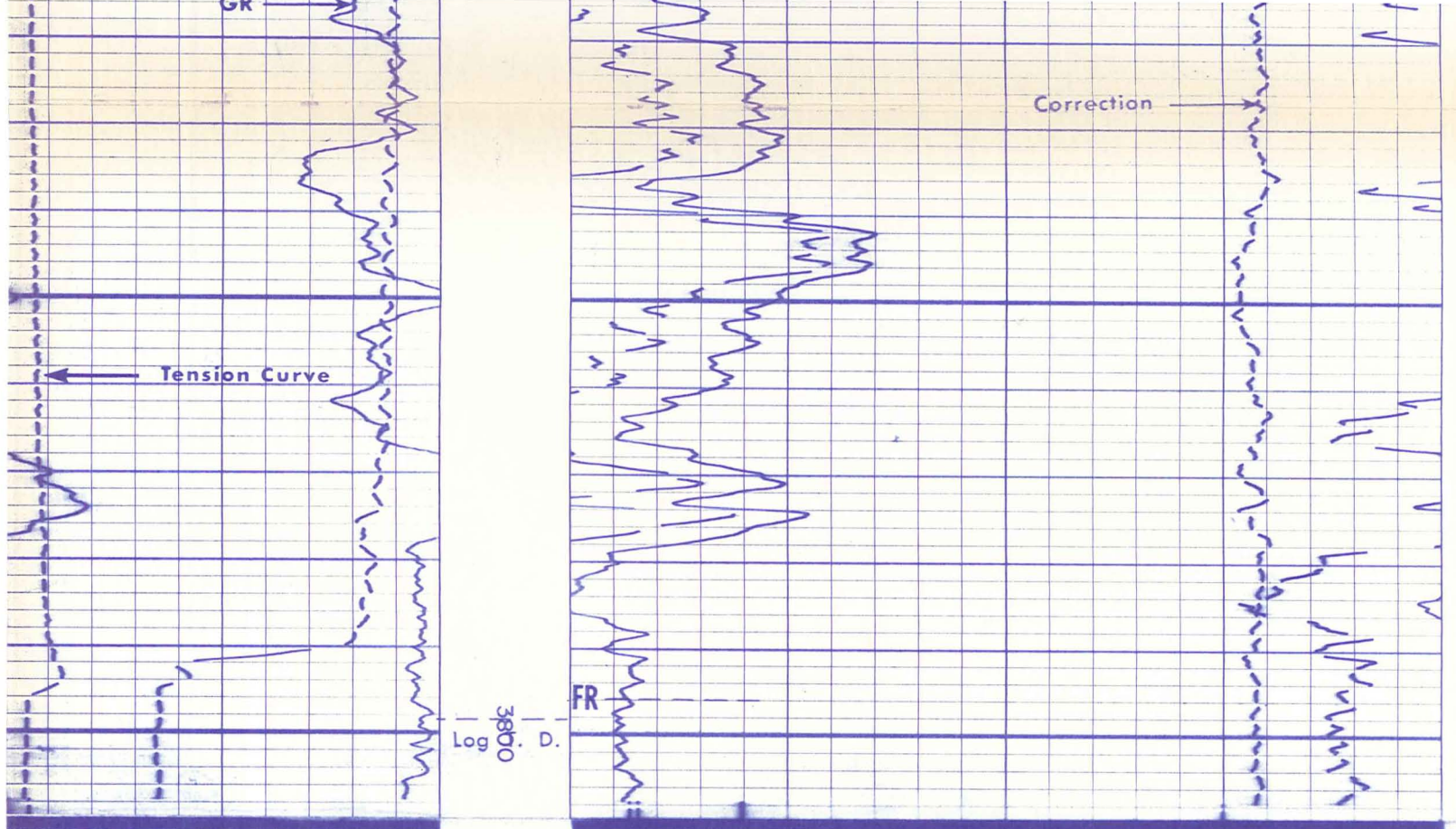


3500

3600

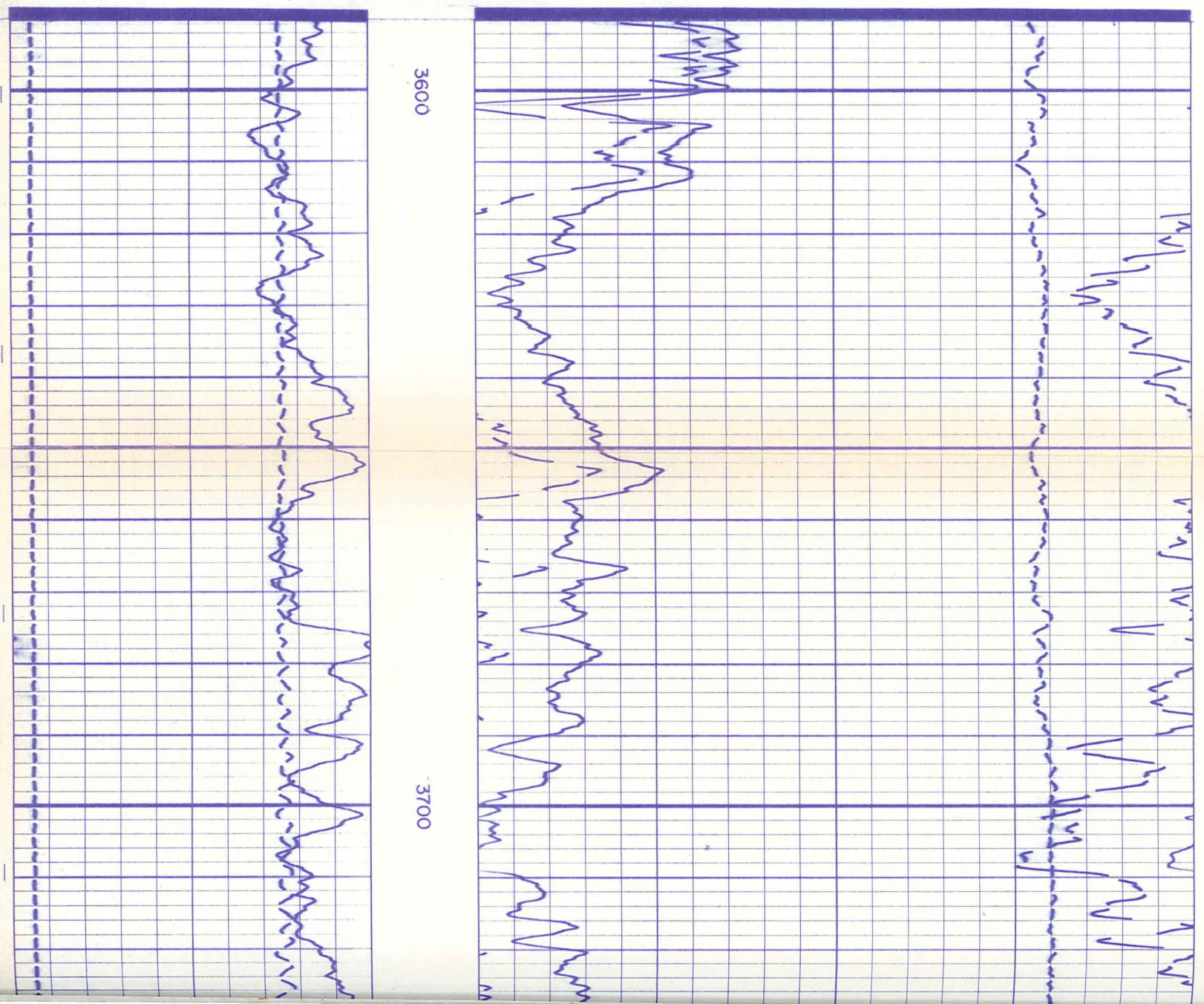
3700

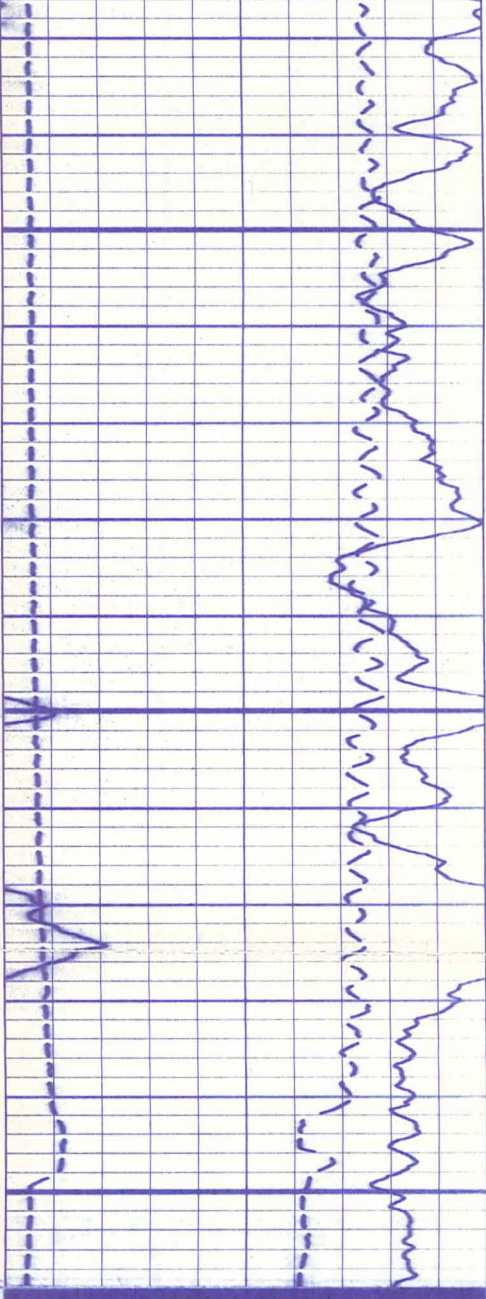




GAMMA RAY & CALIPER		DEPTH	BULK DENSITY GRAMS/CC		
Company	E. G. & G. IDAHO INC.		Drillers T.D.	3858	
Well	R.R.G.I. #7		Log F.R.	3796	
Field	RAFT RIVER GEOTHERMAL		Log T.D.	3798	
County	CASSIA		Elevations:		
State	IDAHO		K.B.	4871	D.F. 4870 G.L. 4855

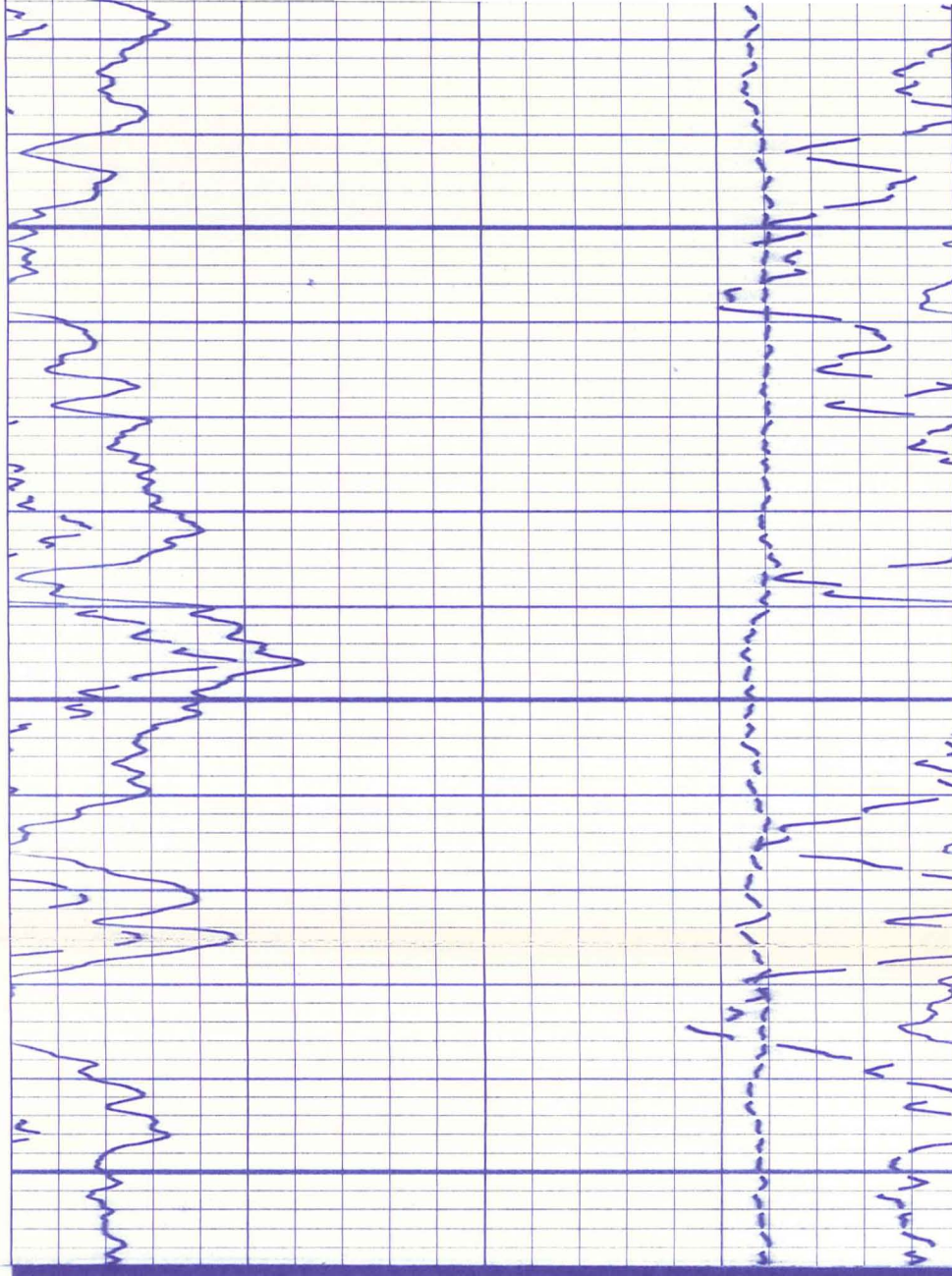
REPEAT SECTION





3700

3800



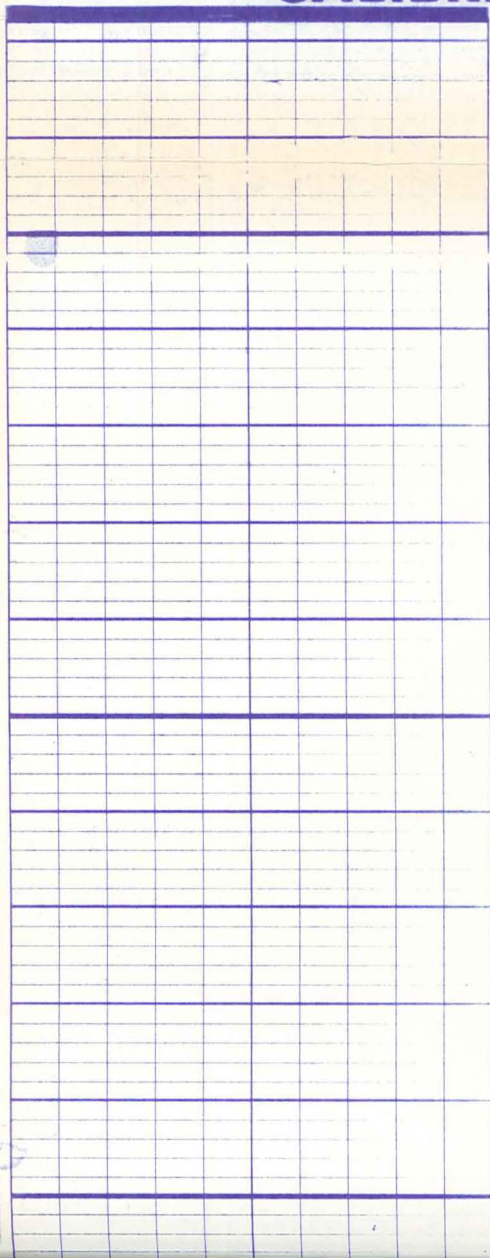
CALIBRATION

COMPENSATED DENSIOLOG

- 1. MECHANICAL ZERO
- 2. PANEL—LOW
- 3. PANEL—HIGH
- 4. CALIPER—LOW
- 5. CALIPER—HIGH
- 6. DENSITY—LOW
- 7. DENSITY—HIGH
- 8. DENSITY—CORRECTION

925276 CDL

CALIBRATION AFTER SURVEY

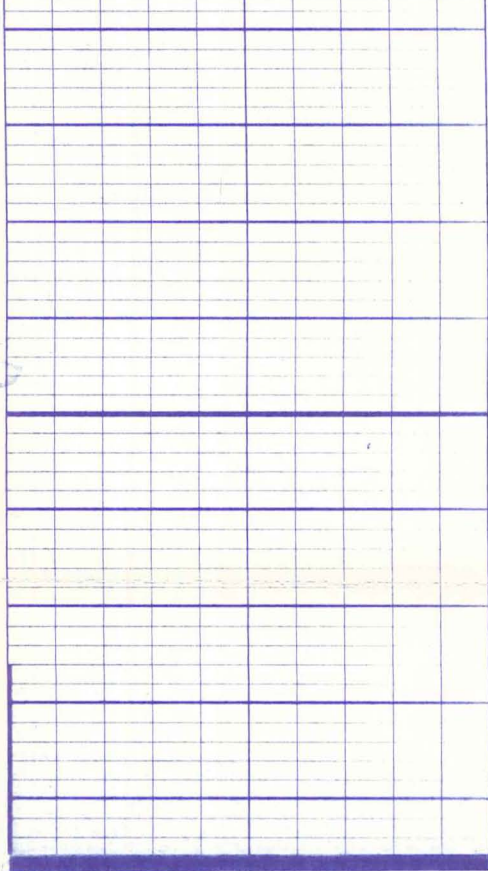


8

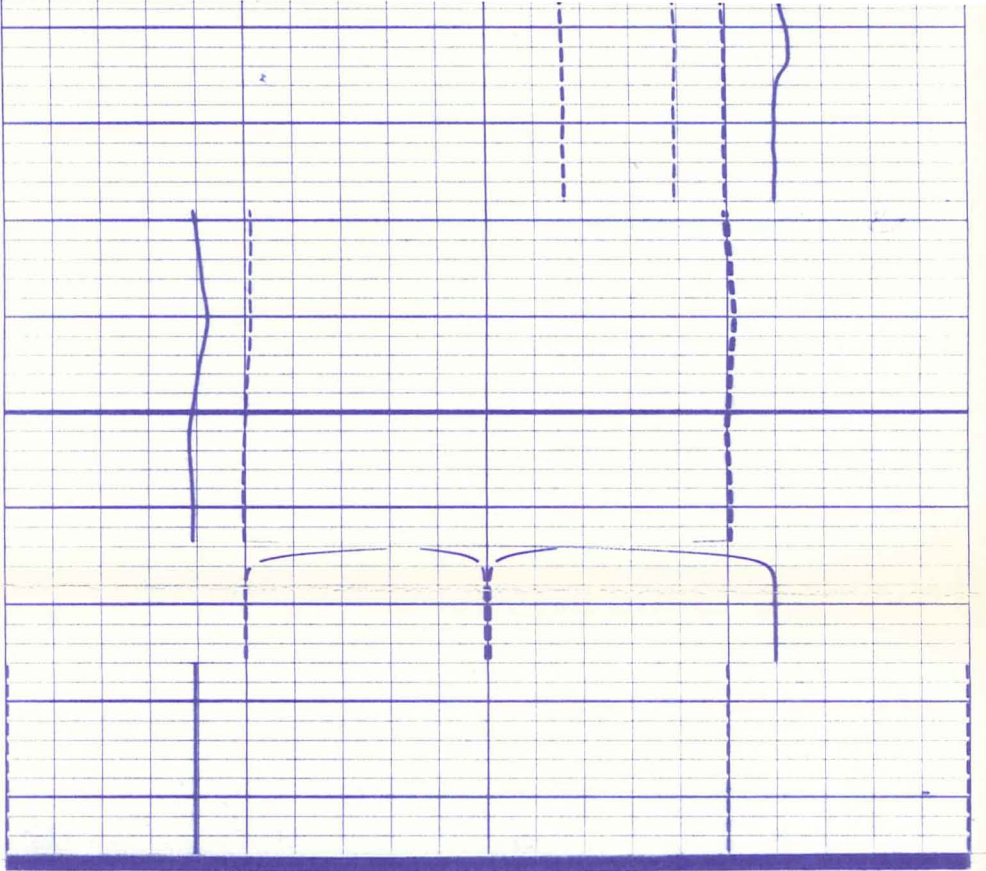
7

6

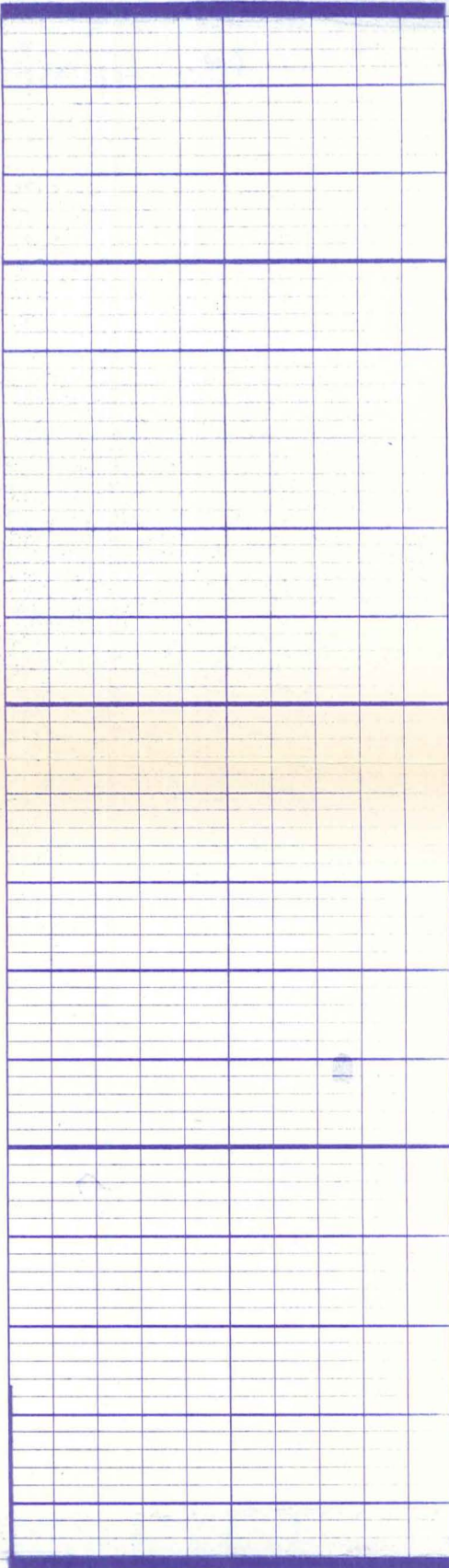




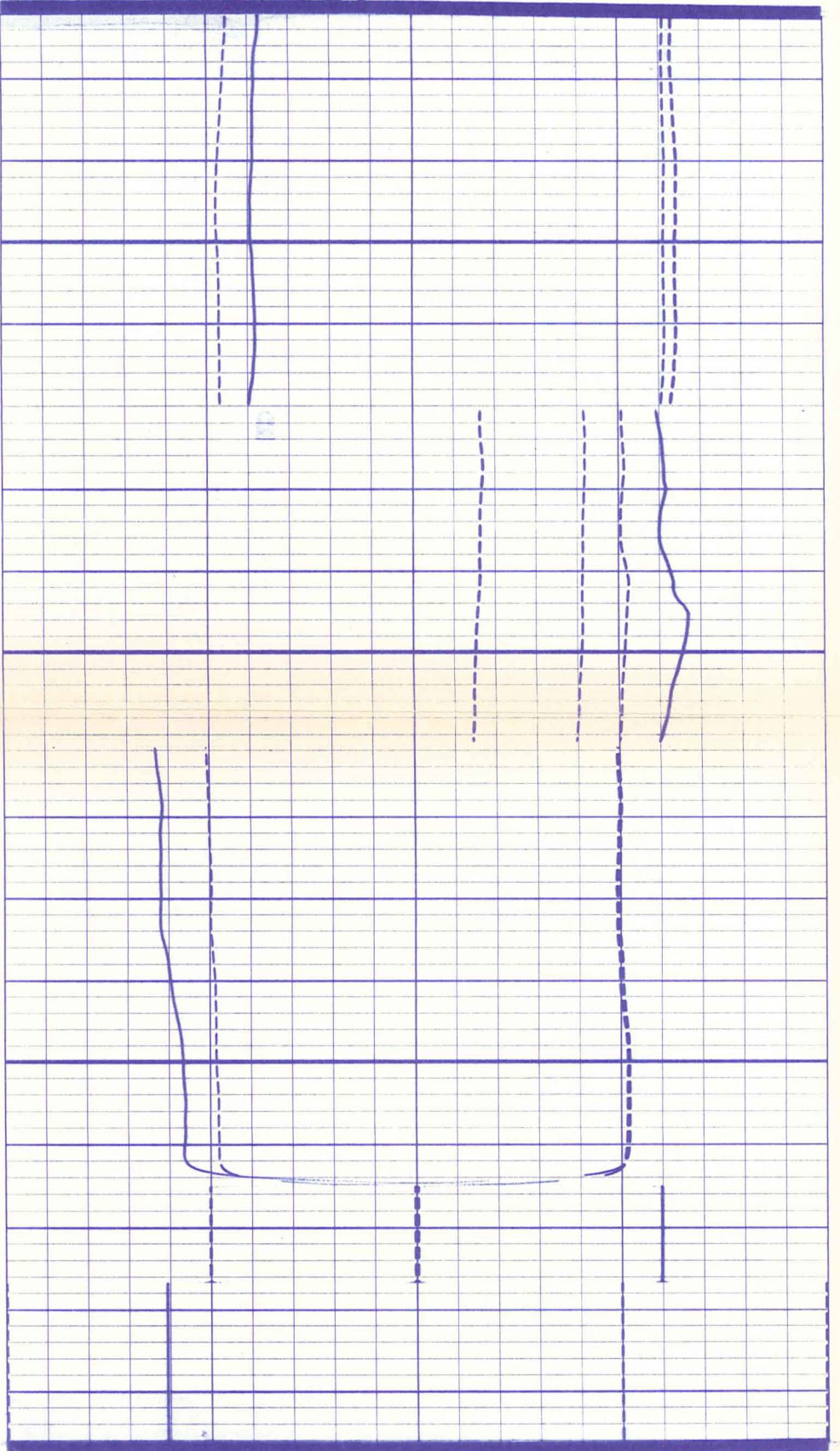
6
3
2
1



CALIBRATION BEFORE SURVEY



8
7
6
3
2
1

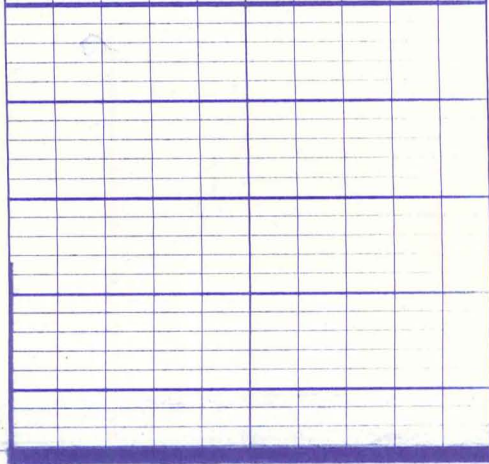


CALIBRATION

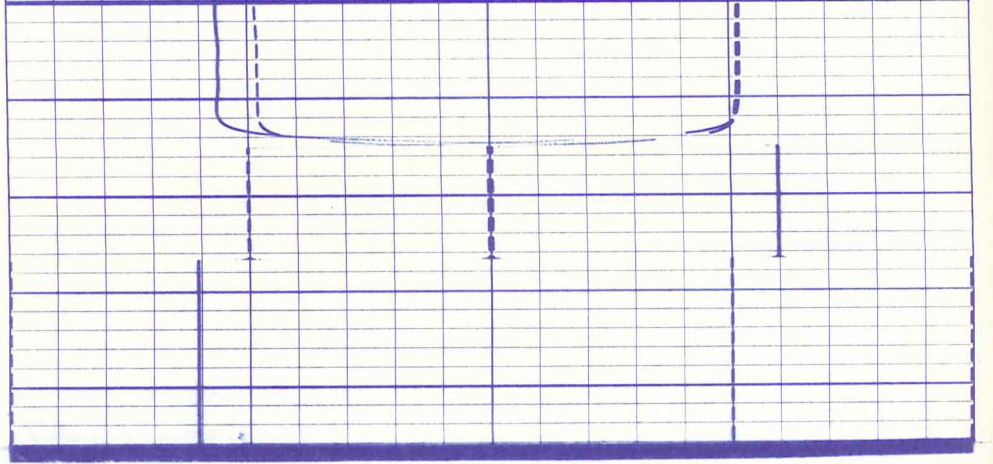
GAMMA RAY

- 1. MECHANICAL ZERO
- 2. PANEL—LOW
- 3. PANEL—HIGH
- 4. COUNT RATE METER
- 5. BACKGROUND READING
- 6. GAMMA RAY—HIGH

API UNITS OF CALIB. STD.	185
SENSITIVITY READING	200
MULTIPLIER	X2
ZERO SUPPRESSION	0
TIME CONSTANT	X2
MEASURED CHART DIVISIONS	6



6
3
2
1



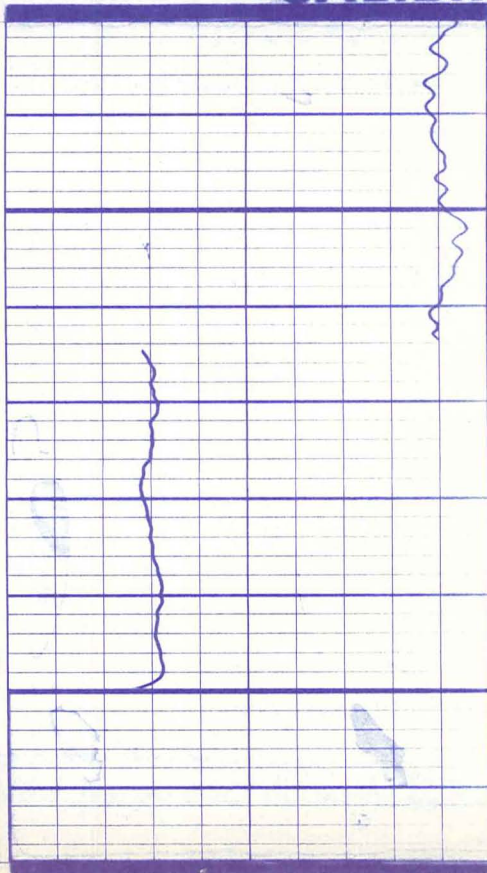
CALIBRATION

GAMMA RAY

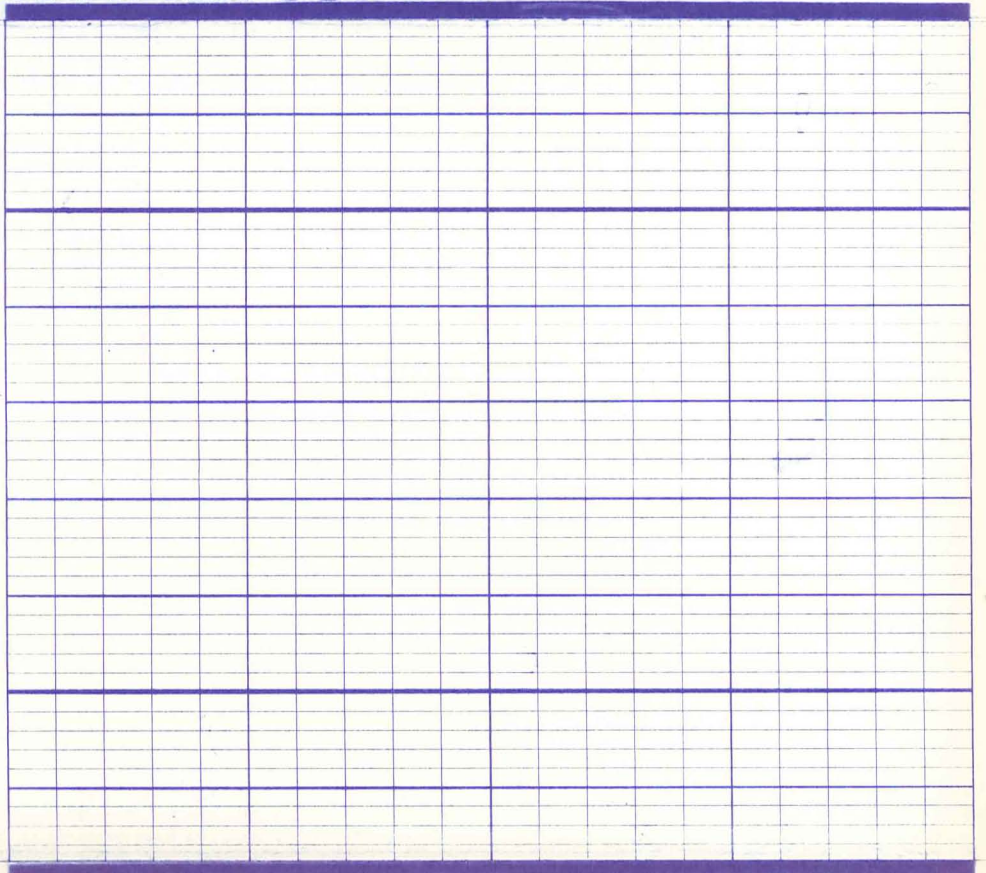
1. MECHANICAL ZERO
2. PANEL—LOW
3. PANEL—HIGH
4. COUNT RATE METER
5. BACKGROUND READING
6. GAMMA RAY—HIGH

API UNITS OF CALIB. STD.	185
SENSITIVITY READING	200
MULTIPLIER	X2
ZERO SUPPRESSION	0
TIME CONSTANT	X2
MEASURED CHART DIVISIONS	6

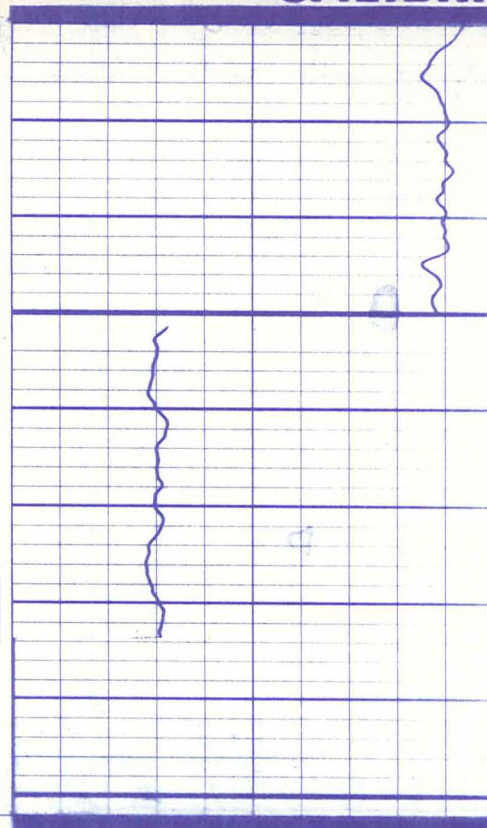
CALIBRATION AFTER SURVEY



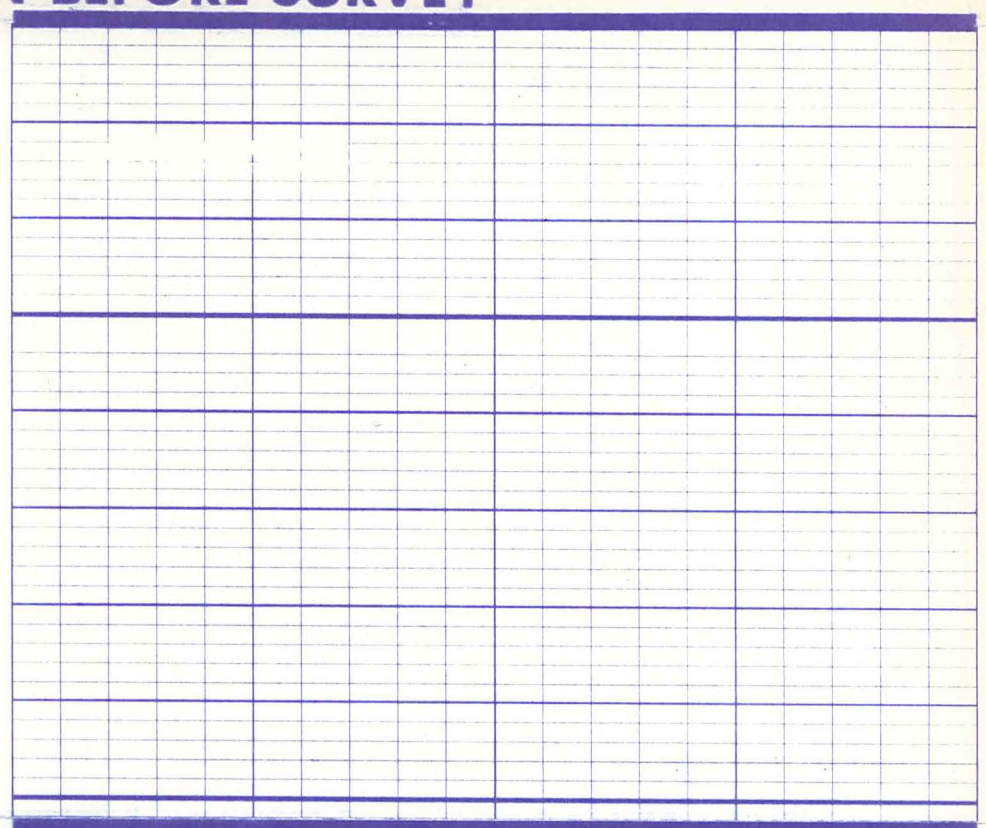
6
5
2
1



CALIBRATION BEFORE SURVEY



6
5
2
1



6 L 0 2 6 2 8
FILE_CAB_15_DRAWER_2