

GL02631



BIRDWELL

Caliper Log

COMPANY E. G. & G. IDAHO, INC.

WELL RRG1 # 7

FIELD RAFT RIVER GEOTHERMAL PROJECT

COUNTY MINIDOKA **STATE** IDAHO

LOCATION: SOUTHEAST **OTHER SERVICES**

SEC. 23 **TWP.** 15-S **RGE.** 26-E

PERMANENT DATUM GROUND LEVEL, **ELEV.** 4855'

LOG MEASURED FROM G.L., 0 Ft. Above Perm. Datum **ELEV. K.B.**

DRILLING MEASURED FROM G.L. **D.F.**

G.L. 4855'

DATE 25 JULY 1978

RUN NO. ONE

TYPE LOG CA6

DEPTH - DRILLER 2050'

DEPTH - LOGGER 2032'

BTM. LOG. INTER. 2016' (HEAVY MUD)

TOP LOG. INTER. 10'

TYPE FLUID IN HOLE MUD

SALINITY PPM CL.

DENSITY LB./GAL.

LEVEL N.A.

MAX.REC.TEMP. - °F NONE

OPER. RIG TIME 2 HOURS

RECORDED BY OWEN

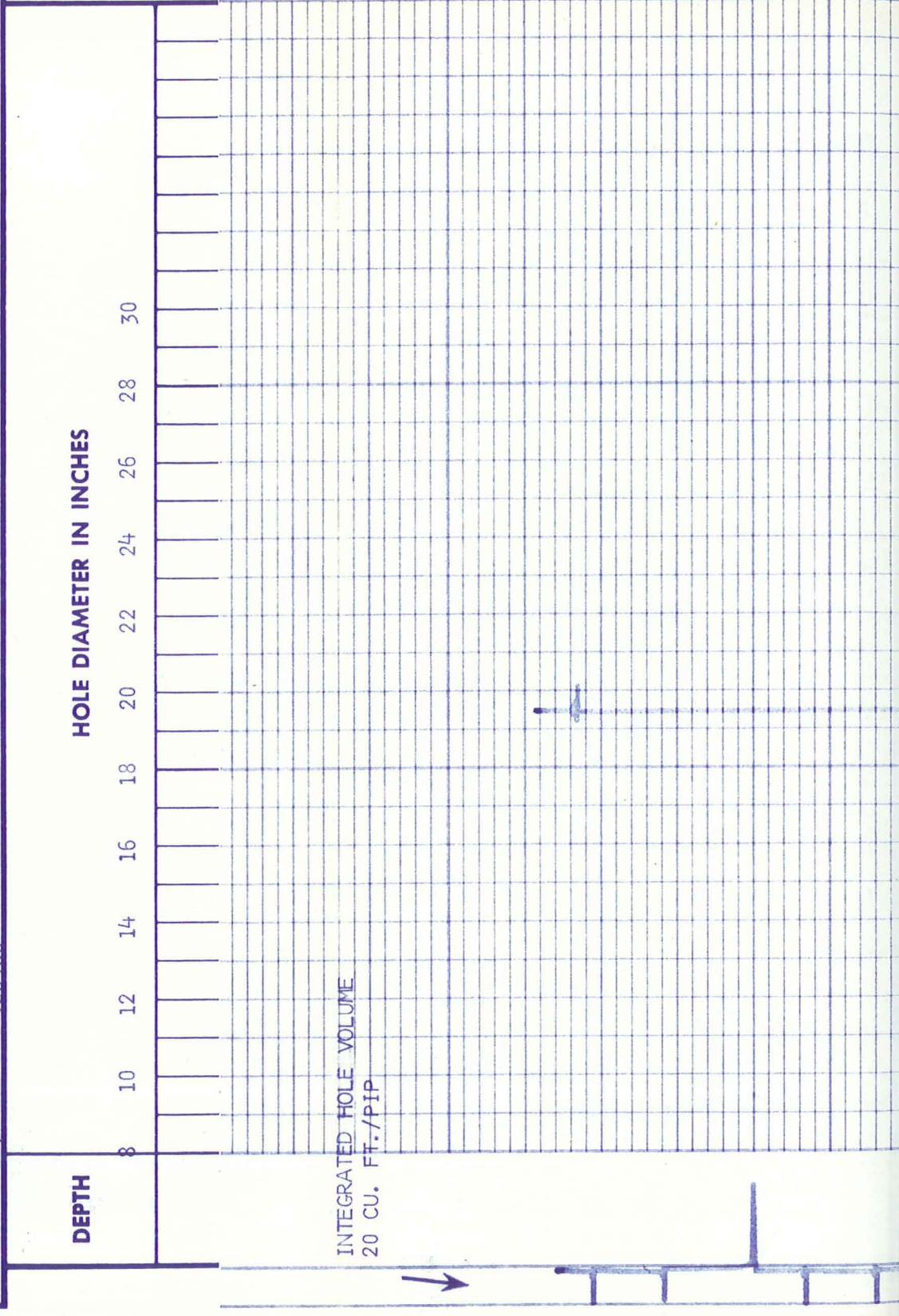
WITNESSED BY D. GOLDMAN

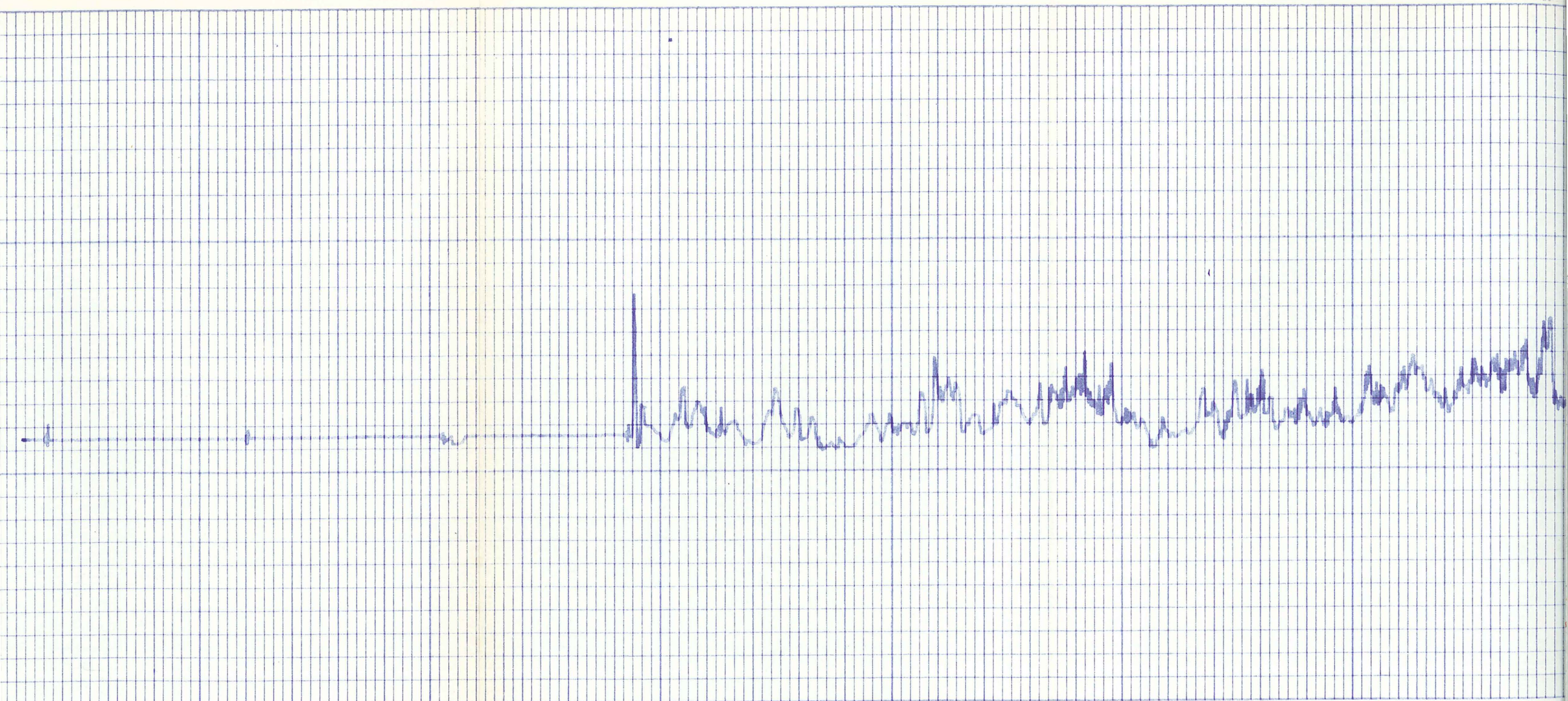
LOCATION LAS VEGAS, NV.

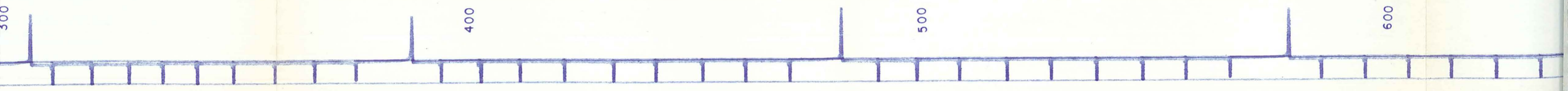
RUN NO.	BORE HOLE RECORD			CASING RECORD			
	BIT	FROM	TO	SIZE	WGT.	FROM	TO
1		0'	150'	20"		0'	150'
	17 1/2"	150'	2050'				

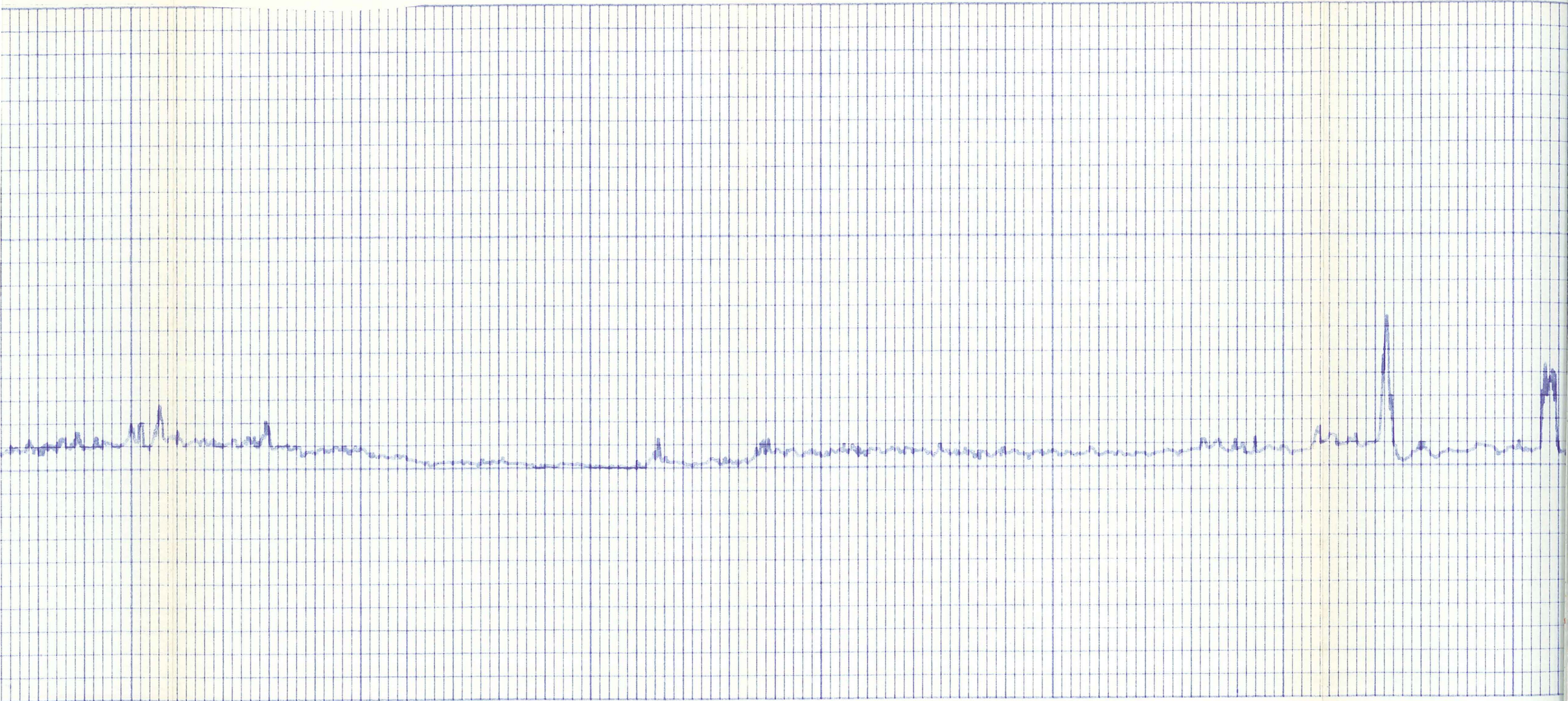
SSC-607-G

EQUIPMENT DATA				WELL DATA			
TYPE LOG	CALIPER	ORIGINAL TOTAL DEPTH	P.B.T.D.	TYPE WELL	OPEN HOLE SHOT WITH	FM.	TO
TOOL MODEL	LEFA-6001				AMOUNT	FM.	TO
TOOL SERIAL NO.	8				AMOUNT	FM.	TO
TOOL DIAMETER	3 5/8"				AMOUNT	FM.	TO
SPEED FT./MIN.	40FT./MIN.				SPECIAL WELL CONDITIONS:		
SCALE	1' / DIV.				PURPOSE OF SURVEY TO DETERMINE HOLE VOLUME AND CONDITION		
MIN. ARM DIAM.	3 5/8"						
MAX. ARM DIAM.	29"						
TRUCK NO.	2831						
REMARKS: (N.A. MEANS NOT AVAILABLE)							
STARTED JOB @ 16.00 HOURS							
FINISHED JOB @ 18.00 HOURS							
SERVICE ORDER/INV. NO. 520460							







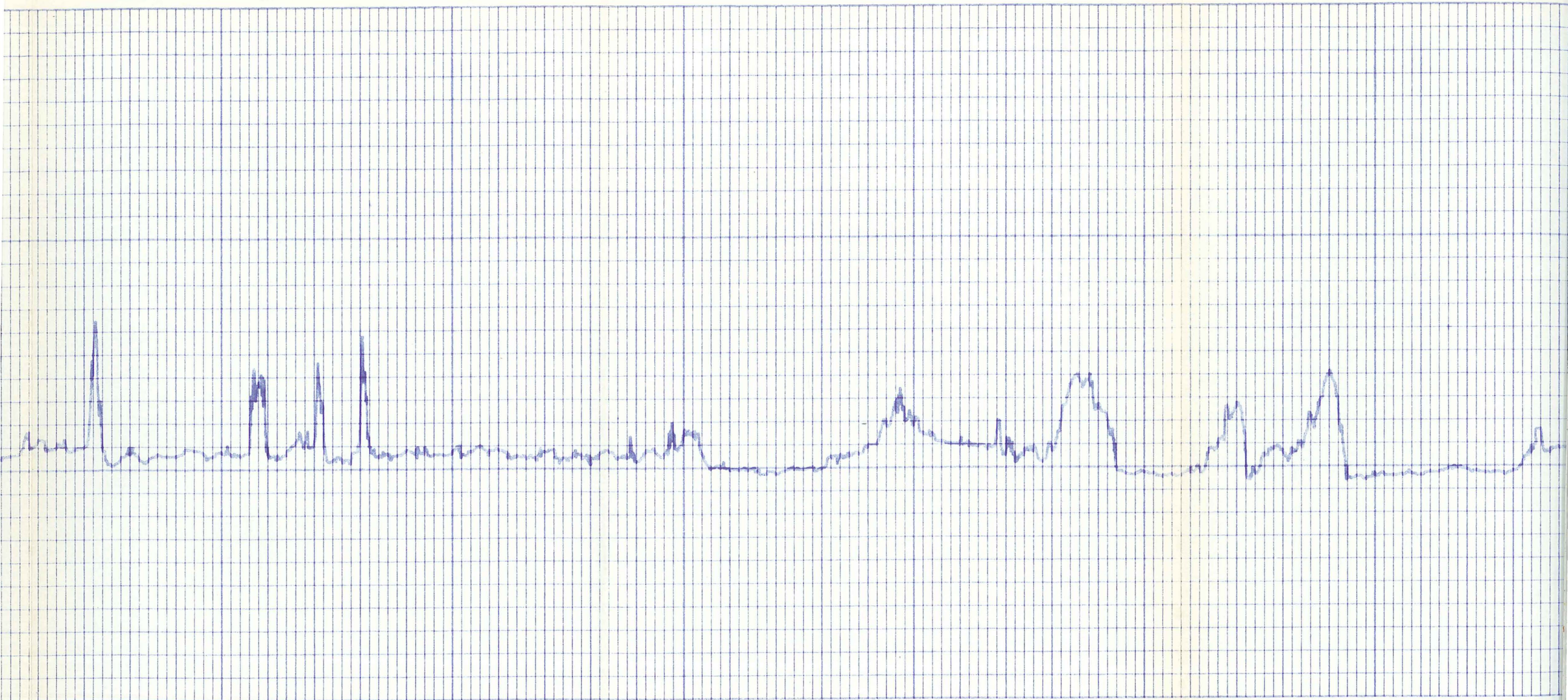


600

700

800

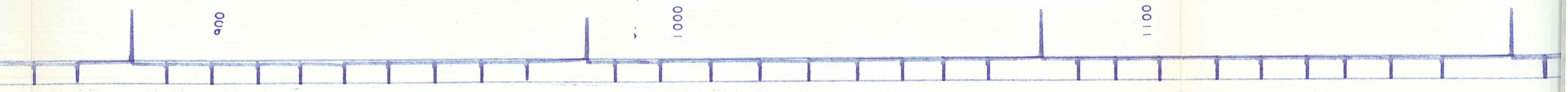
900

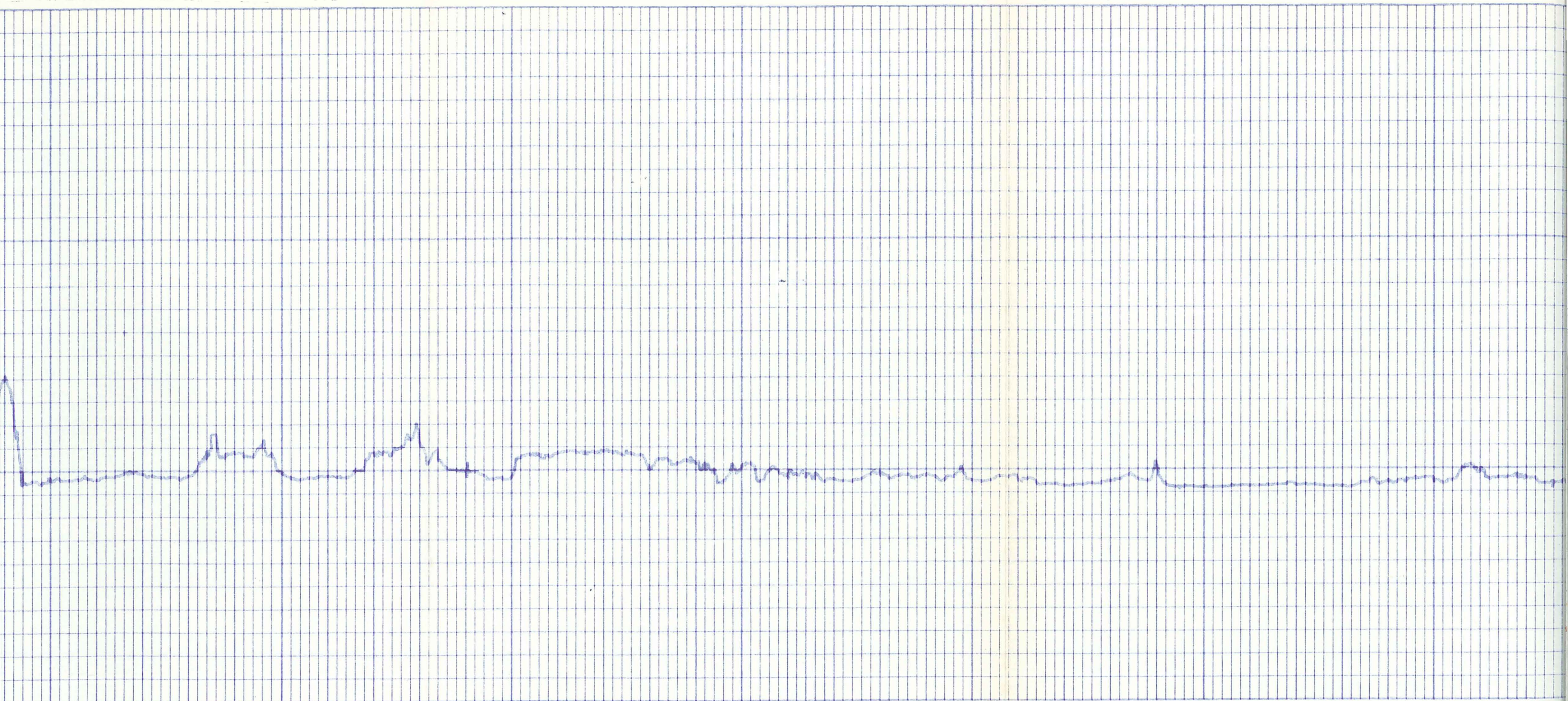


900

1000

1100

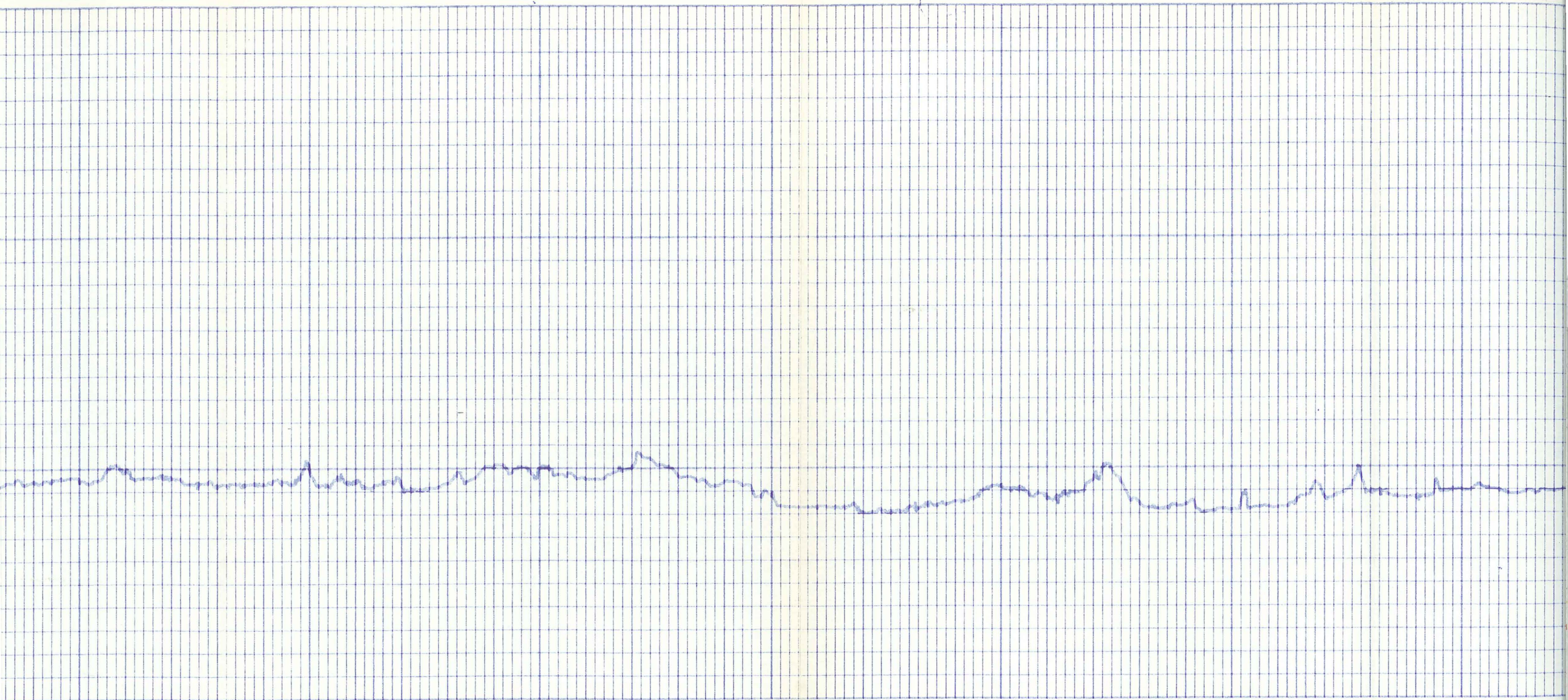




1200

1300

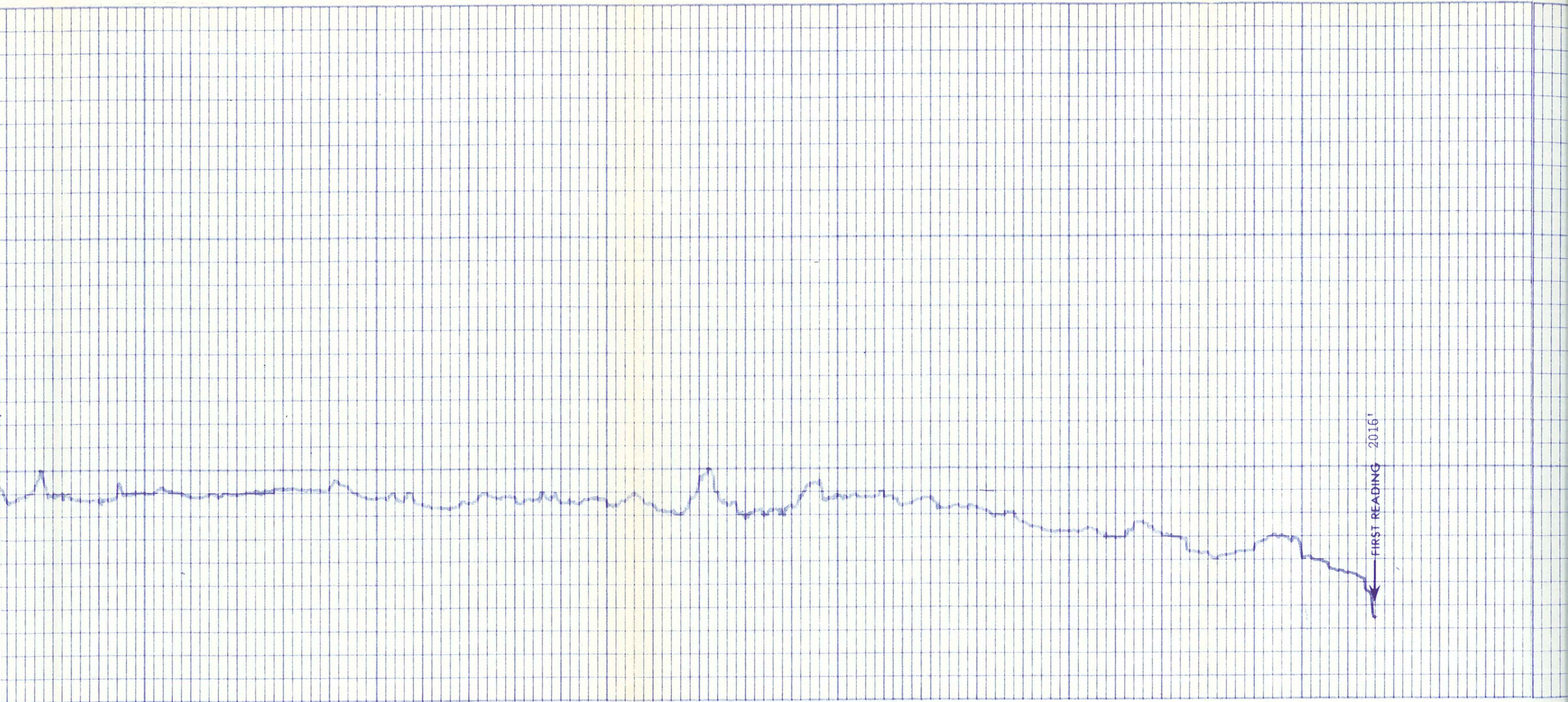
1400



1500

1600

1700



1800

1900

2000

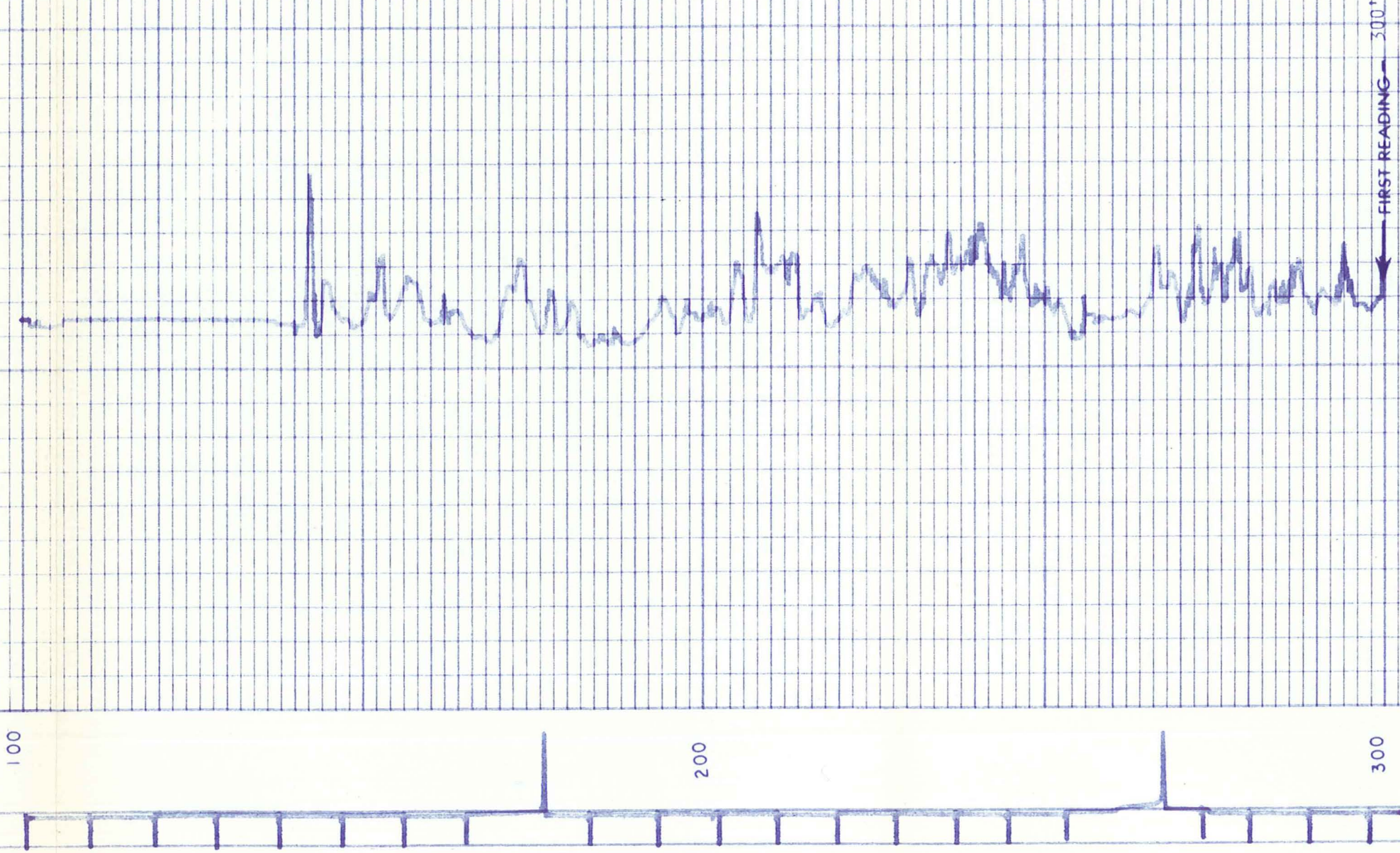
2032'
T.D.

FIRST READING 2016'

FIRST READING 2016'

2032'
T.D.

REPEAT SECTION



FIRST READING 300'

CALIBRATION BEFORE SURVEY

FIRST READING 200

CALIBRATION BEFORE SURVEY

INTEGRATOR 20 CU. FT./PIP

20" CALIPER



12" CALIPER



12"

16"





↑
CALIBRATION DATA

COMPANY _____	E. G. & G. IDAHO, INC.	DRILLER _____	T.D. 2050'
WELL _____	RRGI # 7	BIRDWELL _____	T.D. 2032'
FIELD _____	RAFT RIVER GEOTHERMAL PROJECT	BIRDWELL _____	F.R. 2016'
LOCATION _____	SOUTHEAST, SEC. 23, TWP. 15-S, RGE. 26-E	ELEV.: _____	K.B. _____
COUNTY _____	MINIDOKA	_____	D.F. _____
STATE _____	IDAHO	DATE _____	25 JULY 1978
			G.I. 4855'

BIRDWELL DIVISION



Seismograph Service Corporation
A SUBSIDIARY OF RAYTHEON COMPANY