



Dual Induction Focused Log WITH LINEAR CORRELATION LOG

GL02636  
FILE NO.

MASTER FILE  
THANK YOU

COMPANY E.G.+G. IDAHO INC.

WELL RR6I-G

FIELD RAFF RIVER GEOTHERMAL

COUNTY CASSIA STATE IDAHO

LOCATION: SE 1/4 NE 1/4

SEC 25 TWP 15S RGE 26E

Other Services  
DIFF. TEMP  
COLC/CNL  
BHC/GR

Permanent Datum G.L. Elev. 4860  
Log Measured from G.L. 0 Ft. Above Permanent Datum  
Drilling Measured from G.L.

Elevations:  
KB 4876  
DF 4875  
GL 4860

Date	4/30/78		
Run No.	Two		
Depth-Driller	3889		
Depth-Logger	3784		
Bottom Logged Interval	3782		
Top Logged Interval	1700		
Casing-Driller	13 3/8 @ 1698	@	@
Casing-Logger	1696		
Bit Size	12 1/4"		
Type Fluid in Hole	WATER	@	@
Density and Viscosity			
pH and Fluid Loss		CC	CC
Source of Sample	FLOWLINE		
Rm @ Meas. Temp.	2.60 @ 70 °F	@	@
Rmf @ Meas. Temp.	@ °F	@	@
Rmc @ Meas. Temp.	@ °F	@	@
Source of Rmf and Rmc			
Rm @ BHT	1.15 @ 158 °F	@	@
Time Since Circ.	25 HRS		
Max. Rec. Temp. Deg. F.	158 °F	°F	°F
Equip. No. and Location	HL-6159 RSUT		
Recorded By	PERESSINI		
Witnessed By	STOKER		

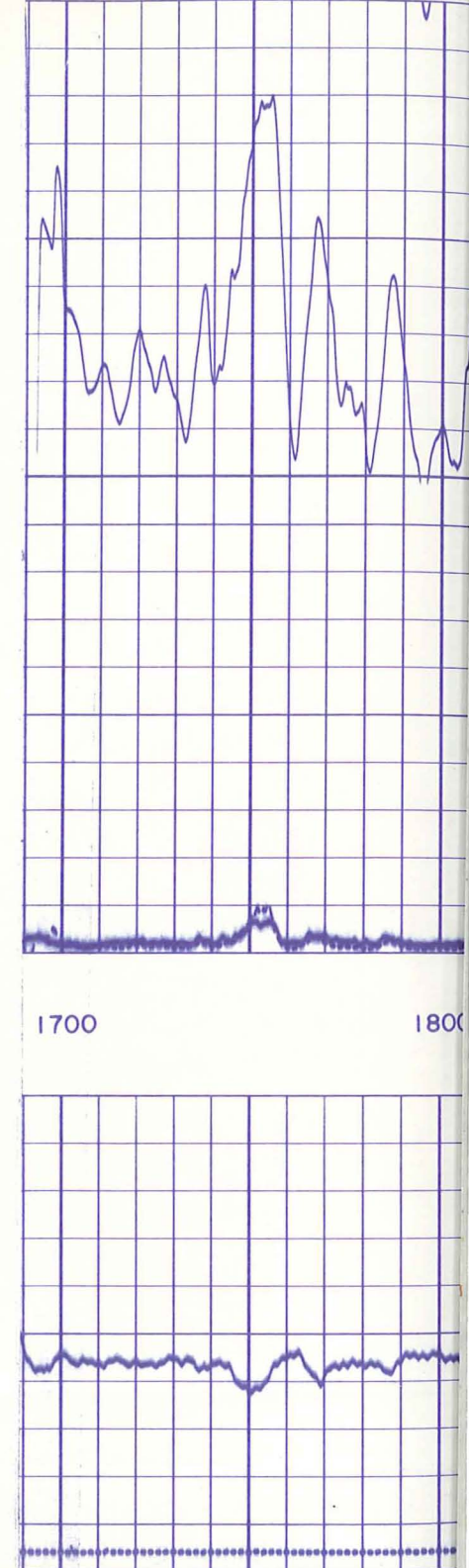
FIELD PRINT

FOLD HERE | THIS HEADING AND LOG CONFORMS TO API RECOMMENDED STANDARD PRACTICE RP-31

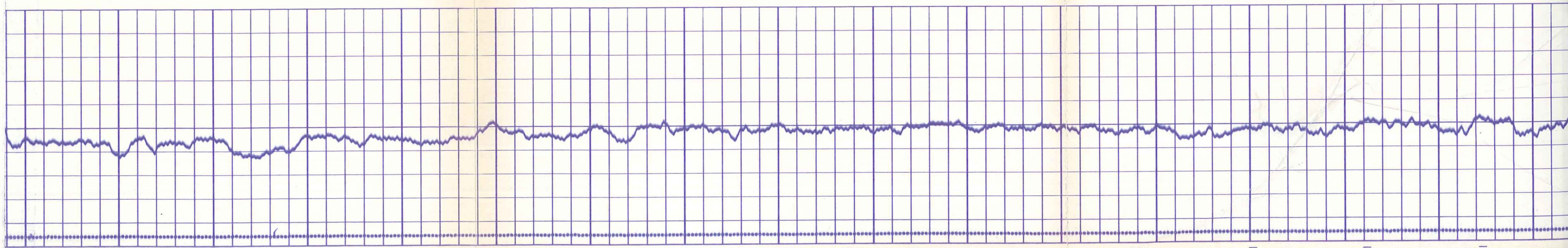
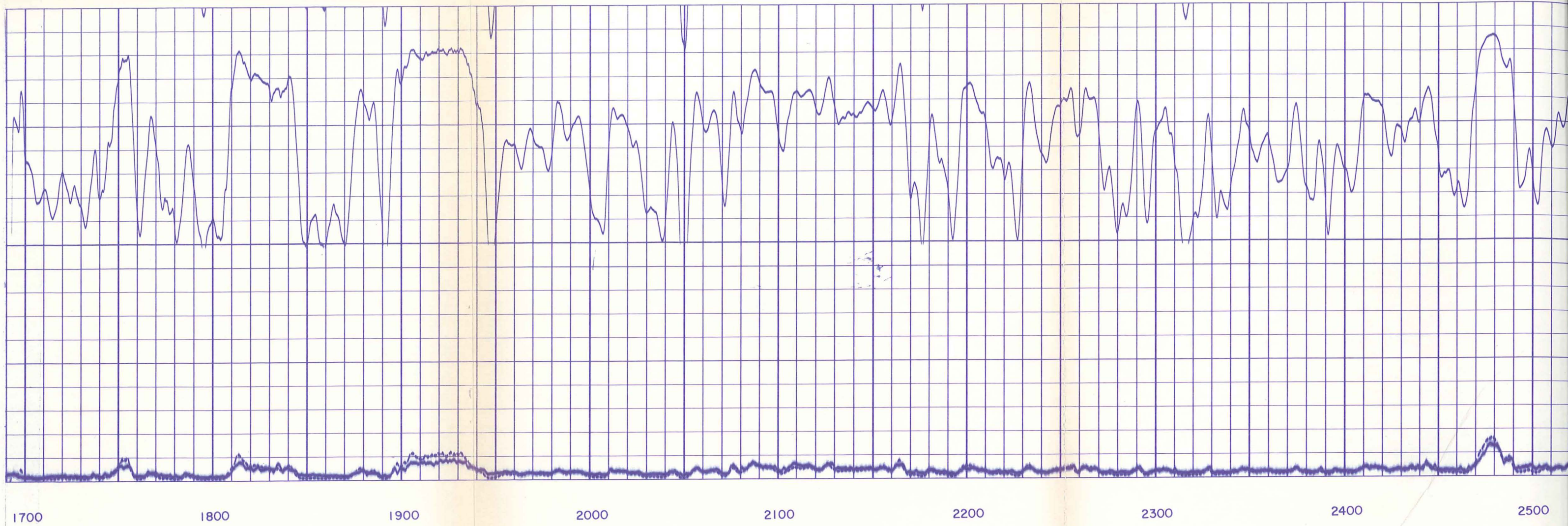
REMARKS		Equipment Used		Scale Changes		Equipment Data	
Date	Sample No.	Series No.	Run No.	Depth	Scale Up Hole	Tool Type	Tool Position
		1502	Two			DIFL 1502	1 1/2 S.O.
			87780				
			27821				
			27821				
			34826				
			160				

SPONTANEOUS POTENTIAL Millivolts	DEPTH	RESISTIVITY Ohms m <sup>2</sup> /m		CONDUCTIVITY Millimhos/m	
		SHALLOW FOCUSED LOG	DEEP INDUCTION LOG	INDUCTION CONDUCTIVITY	DEEP INDUCTION LOG
		0	100	0	0
		0	1000	0	500
		0	100	0	500
		0	1000	0	500

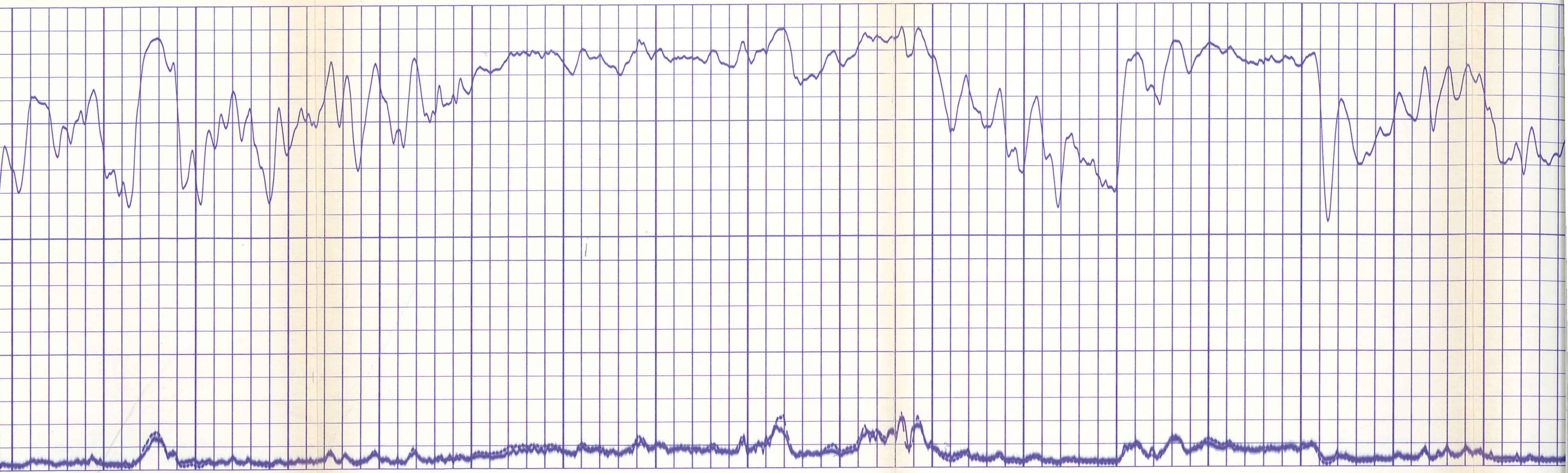
10  
+  
-  
TENSION  
500 #/C.D.



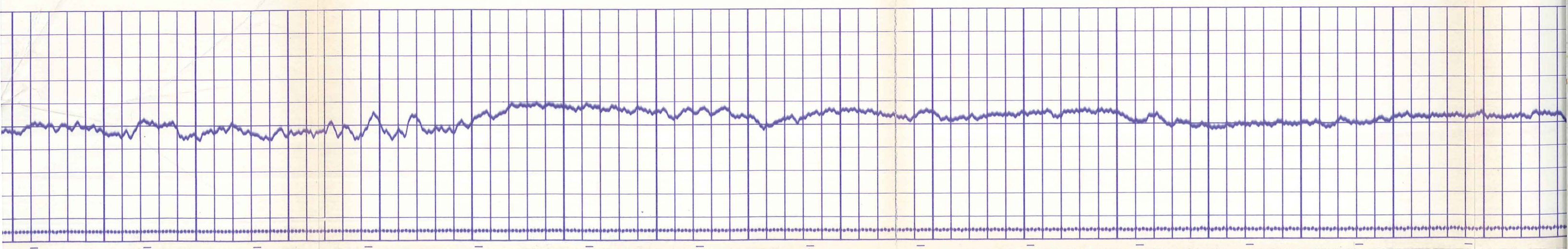




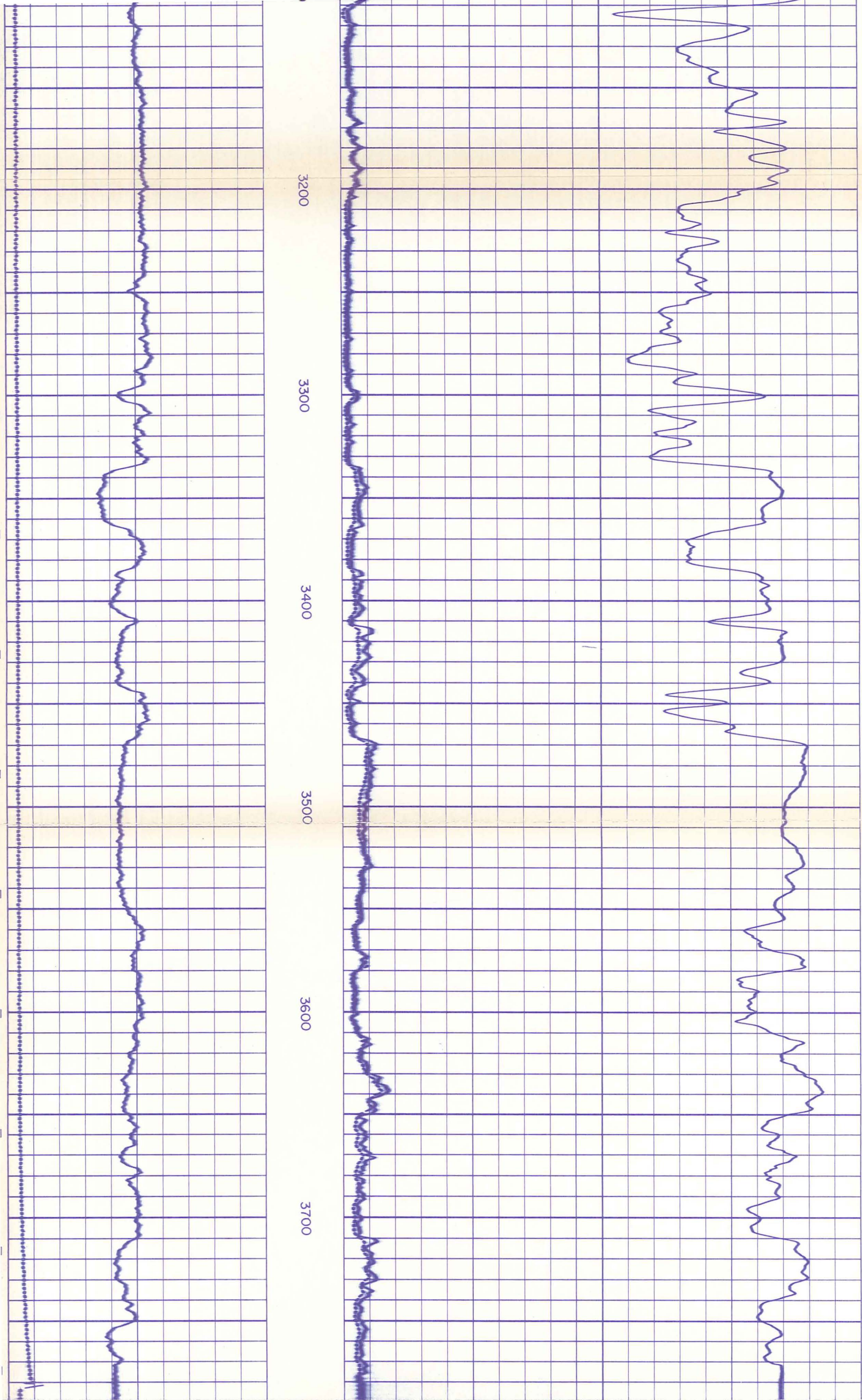




2400                      2500                      2600                      2700                      2800                      2900                      3000                      3100                      3200







<p>TENSION → 500 #/C.D.</p> <p>—   + 10</p>	DEPTH	<p>1000 100 DEEP INDUCTION LOG</p> <p>1000 100 SHALLOW FOCUSED LOG</p>	<p>1000 500 DEEP INDUCTION LOG INDUCTION CONDUCTIVITY</p>
SPONTANEOUS POTENTIAL Millivolts	DEPTH	RESISTIVITY Ohms m <sup>2</sup> /m	CONDUCTIVITY Millimhos/m

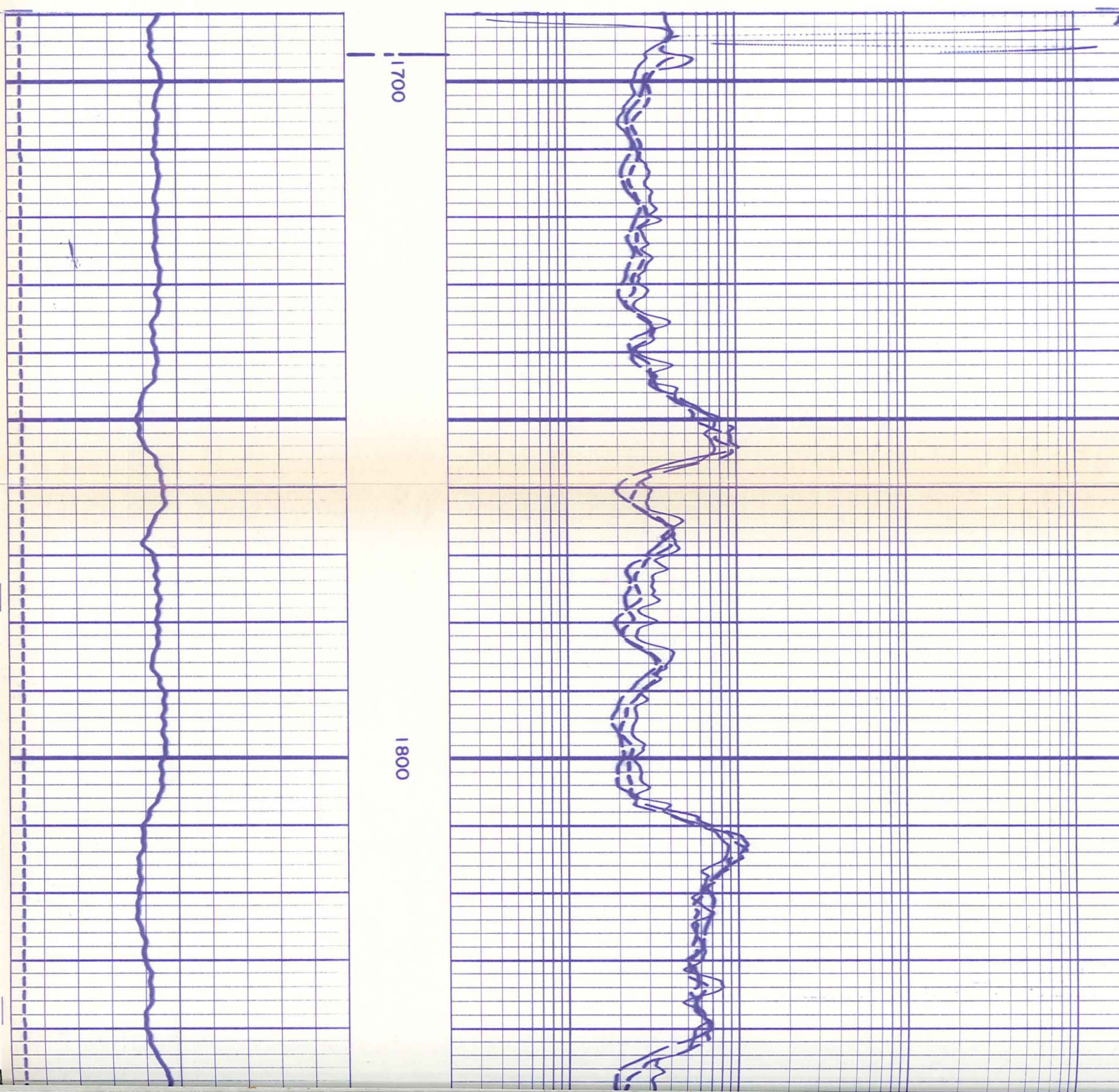


<p>TENSION → 500#/C.D.</p> <p>-   ↔   + 10</p>	0	1000	
	0	1000	1000 500
	0	100	500 0
	DEEP INDUCTION LOG		DEEP INDUCTION LOG INDUCTION CONDUCTIVITY

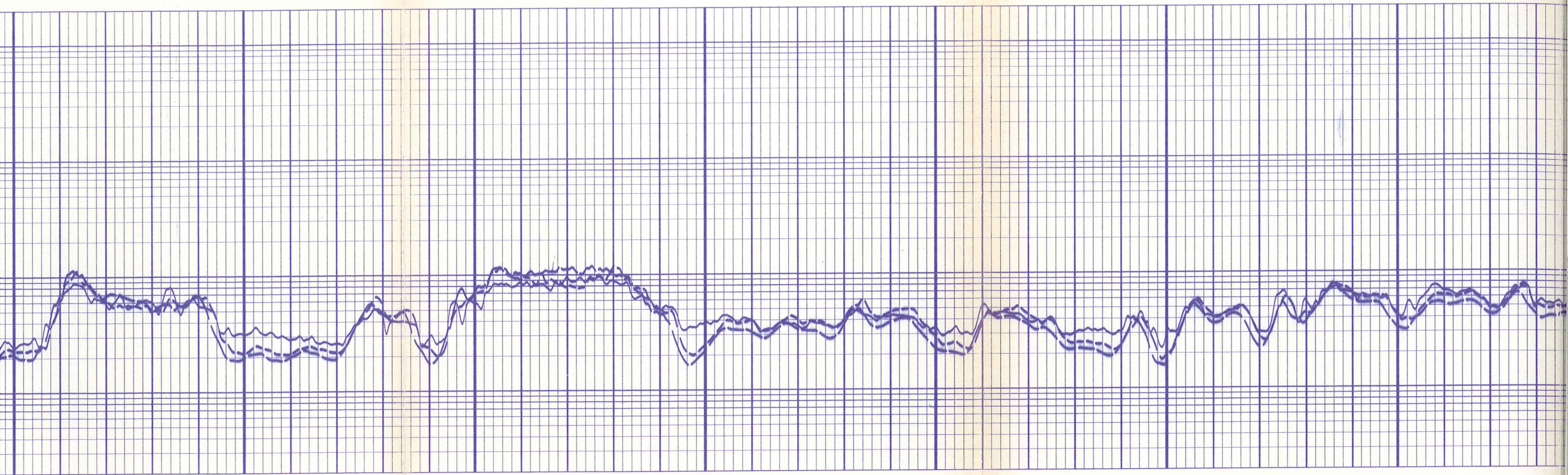
SPONTANEOUS POTENTIAL Millivolts	DEPTH	RESISTIVITY Ohms m <sup>2</sup> /m	CONDUCTIVITY Millimhos/m
-------------------------------------	-------	---------------------------------------	-----------------------------

Company E.G. & G. IDAHO INC. Well RRGI-6 Field RAFT RIVER GEOTHERMAL County CASSIA State IDAHO	Drillers T.D. 3889 Log F.R. 3782 Log T.D. 3784 Elevations: K.B. 4876    D.F. 4875    G.L. 4860
--	--

<p>SPONTANEOUS POTENTIAL Millivolts</p> <p>- →     ← + 10</p> <p>TENSION → 500#/C.D.</p>	DEPTH	RESISTIVITY ohms - m <sup>2</sup> /m				
		SHALLOW FOCUSED LOG				
		.2	1.0	10	100	1000
		MEDIUM INDUCTION LOG				
DEEP INDUCTION LOG						





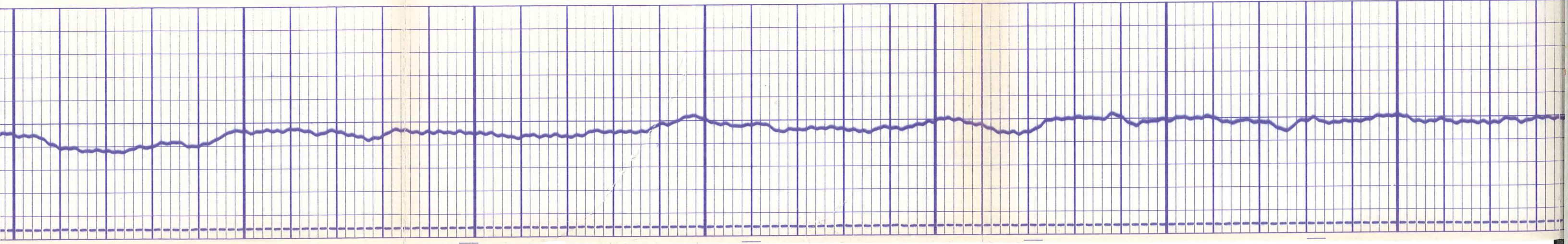


1800

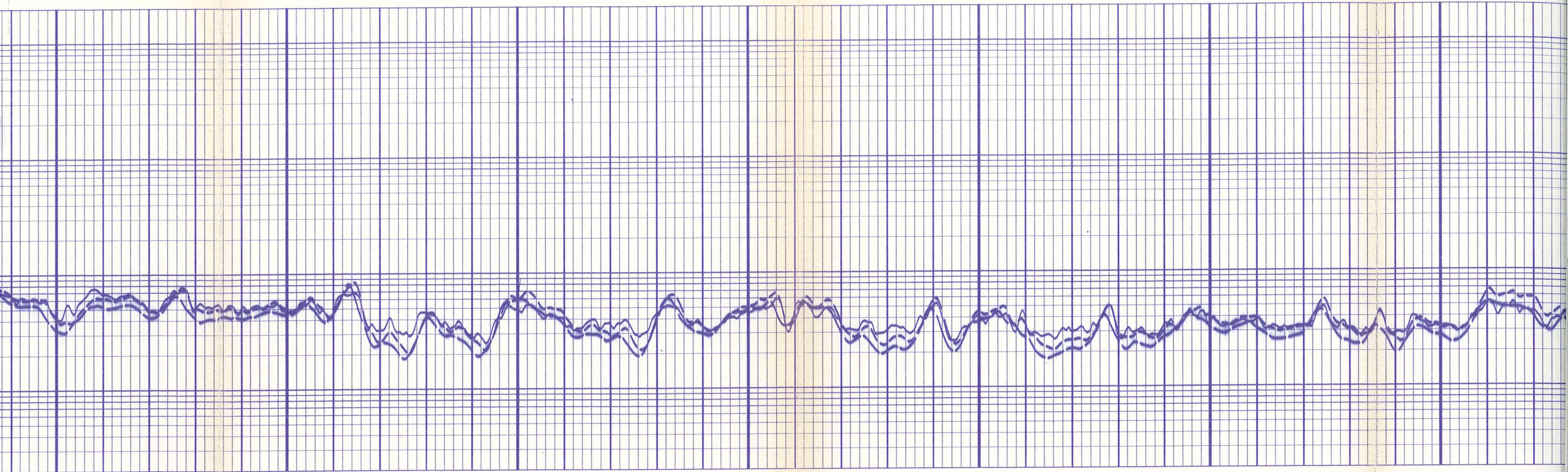
1900

2000

2100





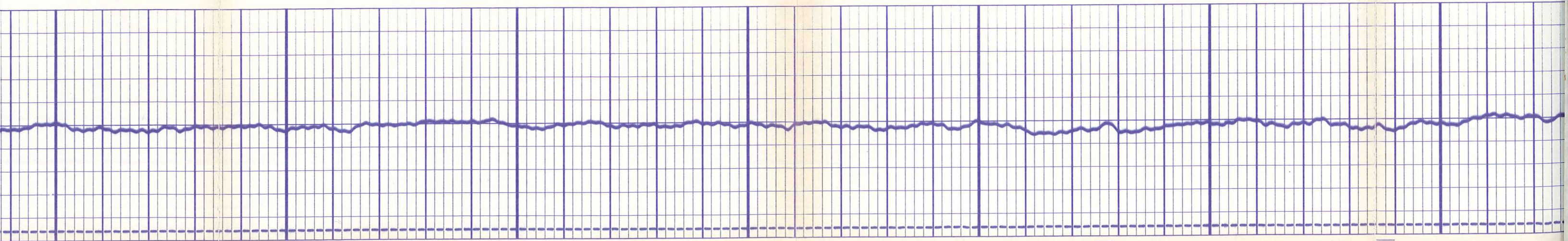


2100

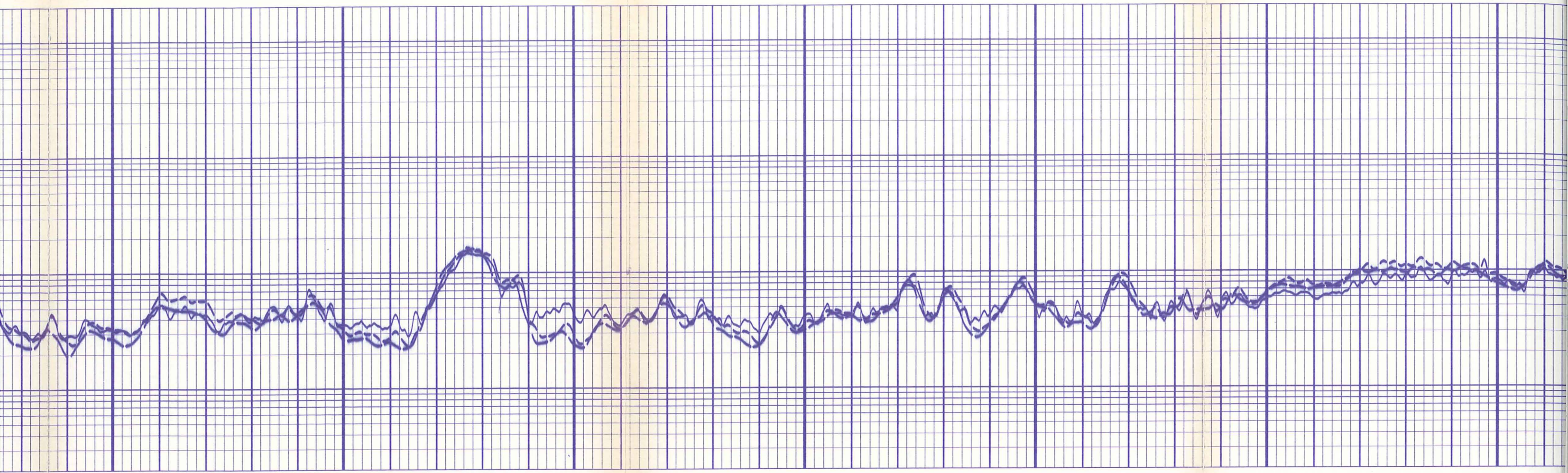
2200

2300

2400





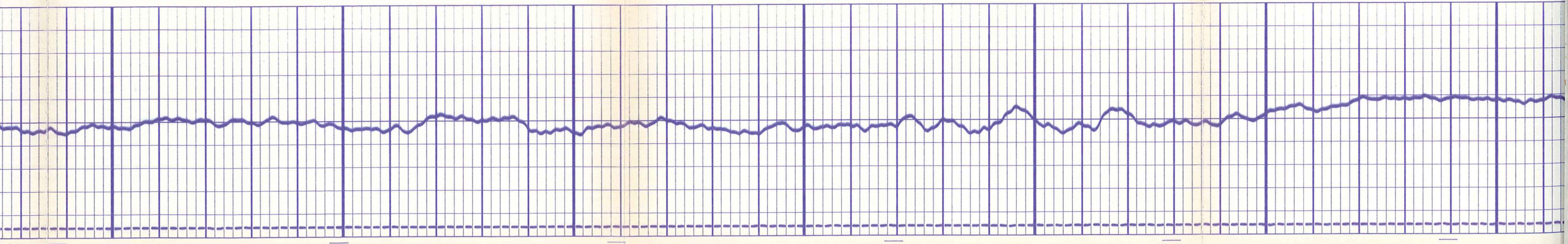


2400

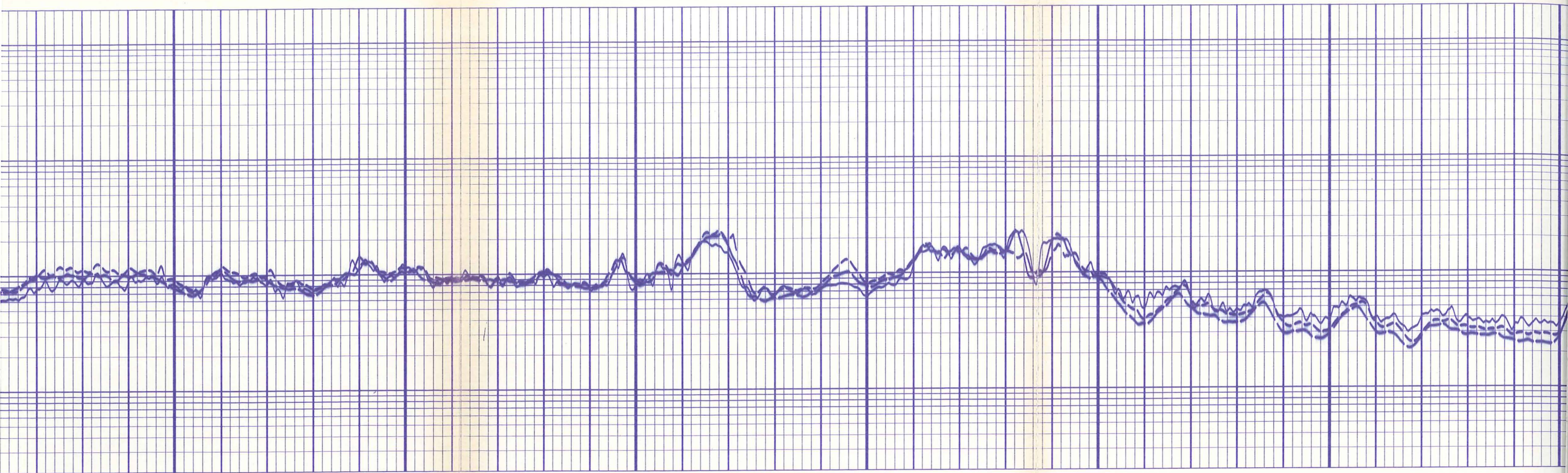
2500

2600

2700





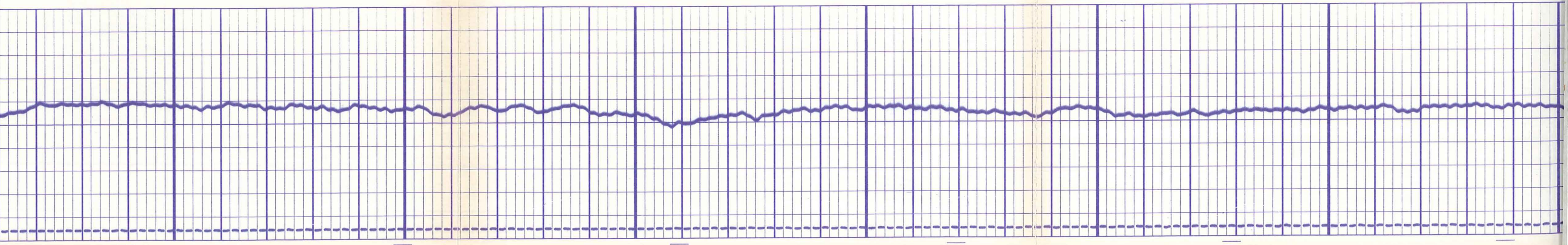


2700

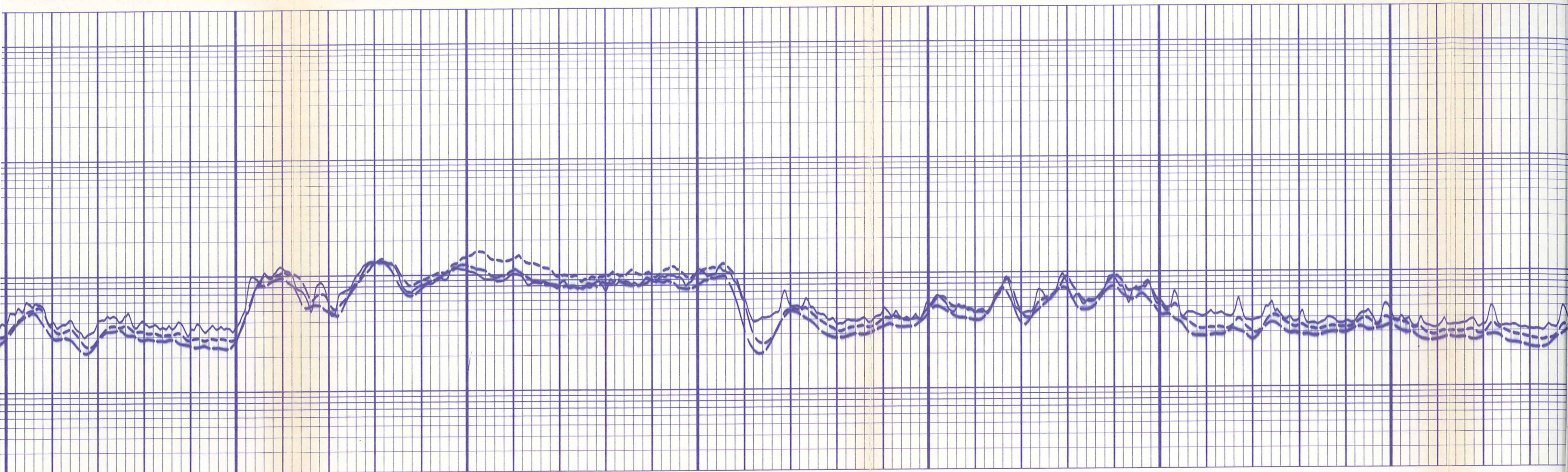
2800

2900

3000



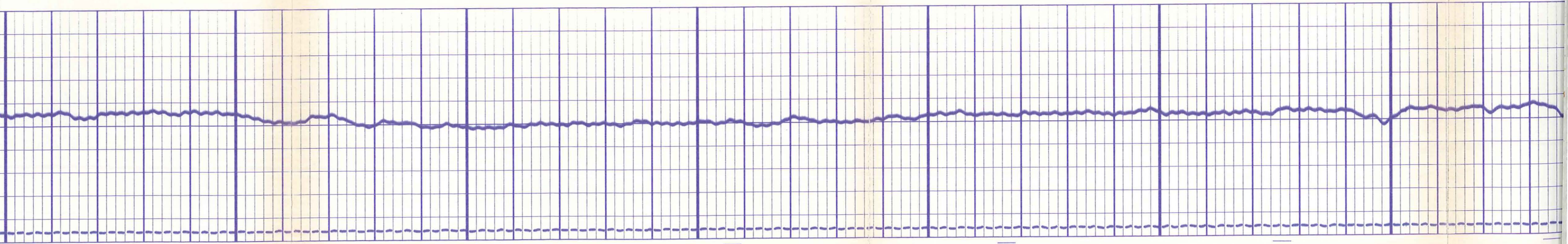




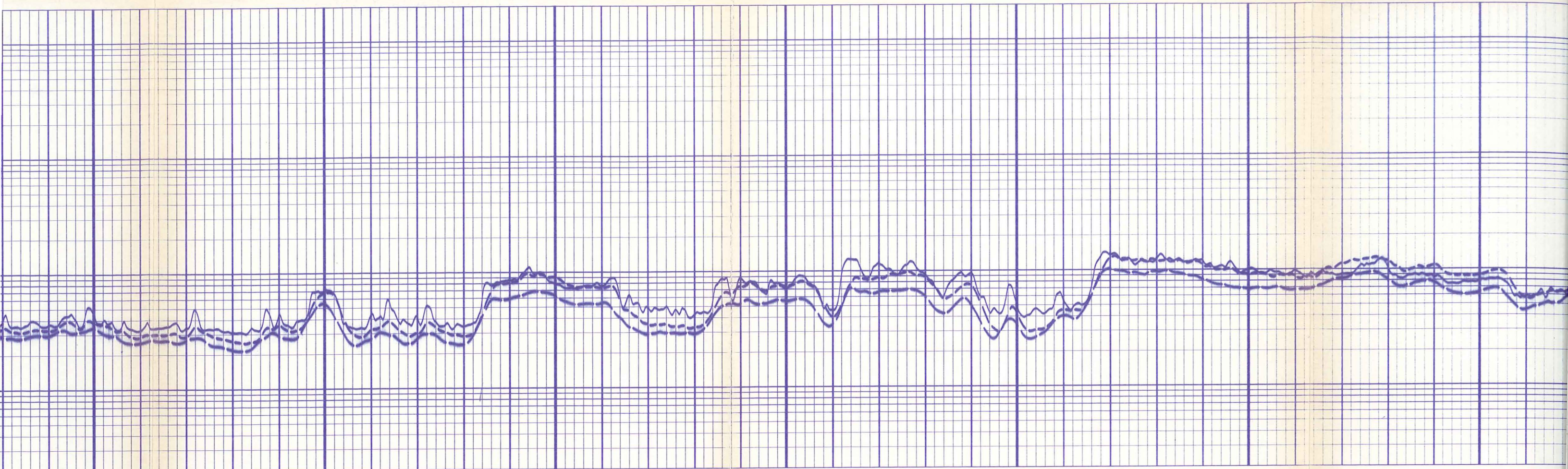
3000

3100

3200



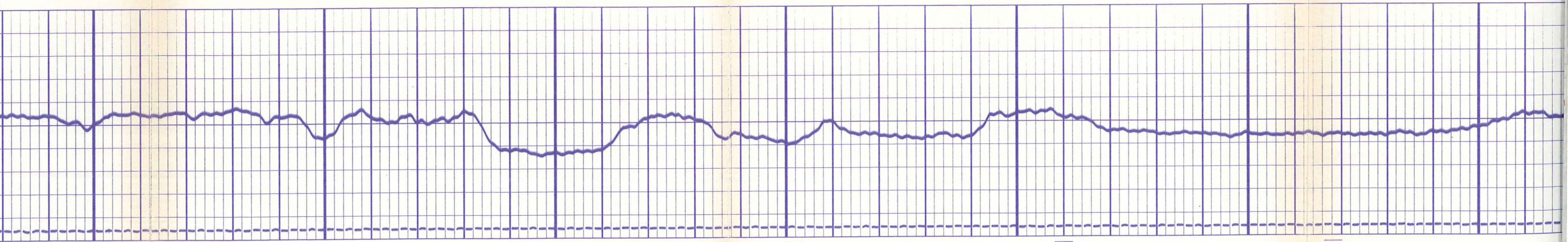




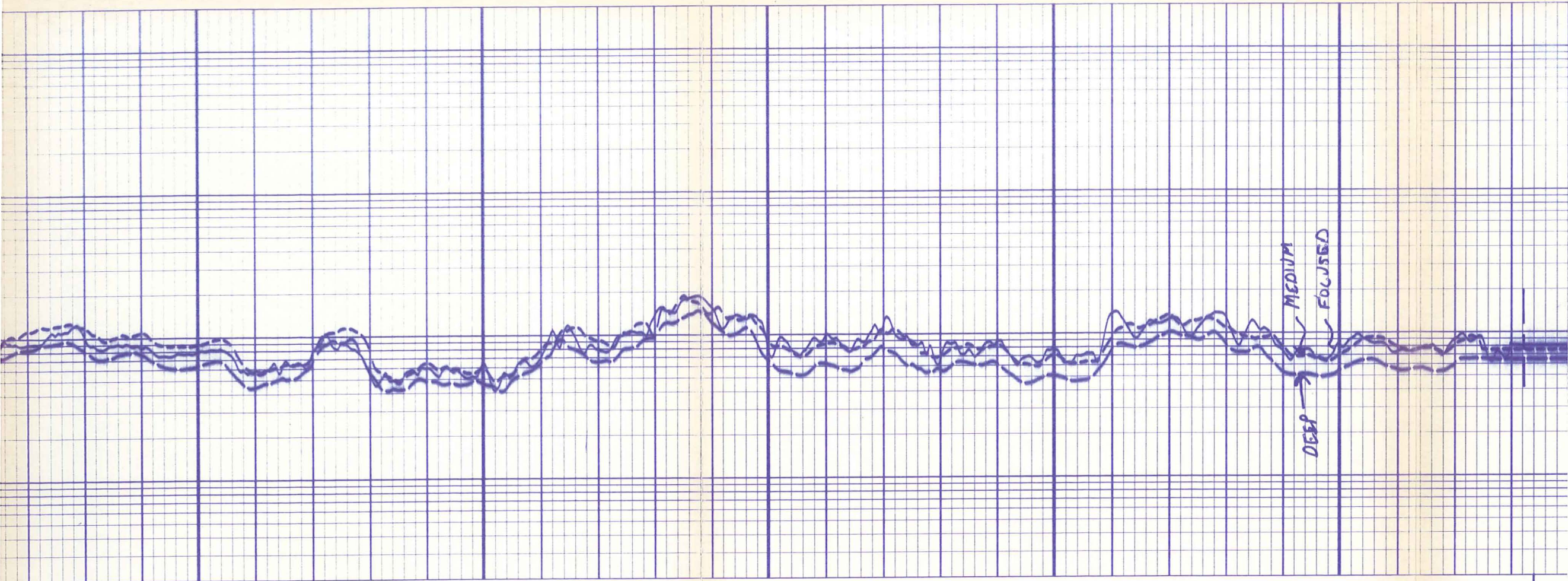
3300

3400

3500

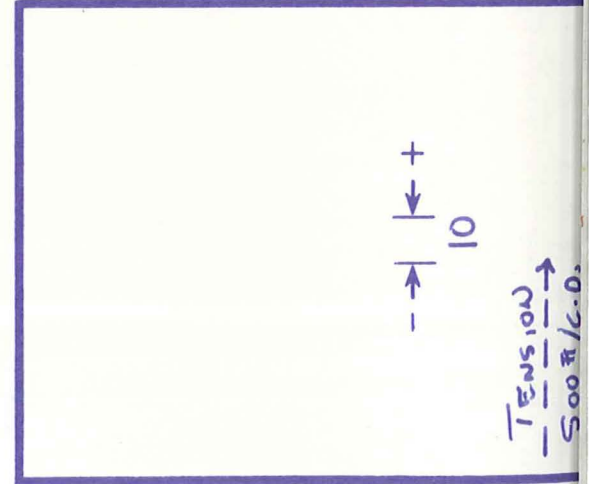
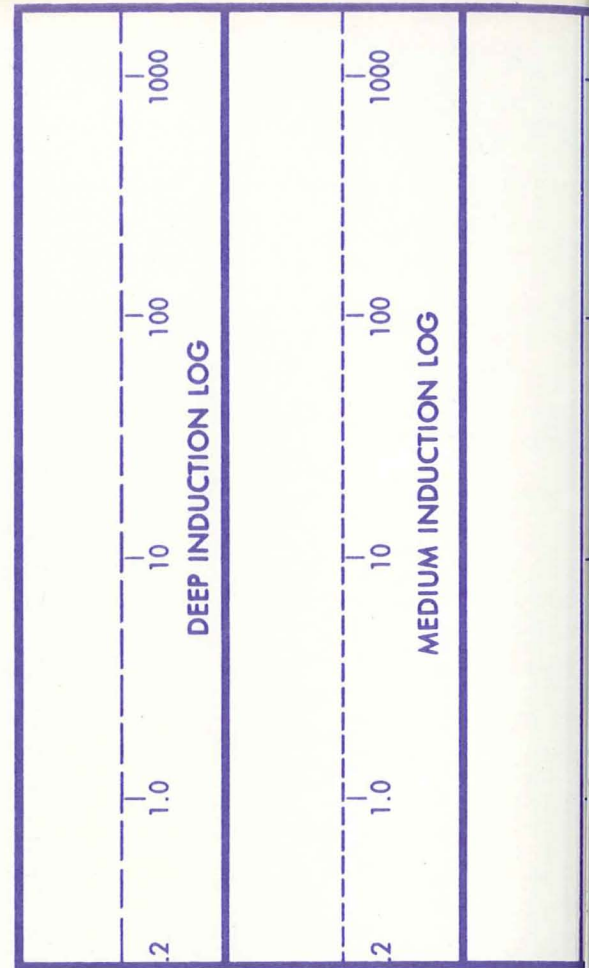
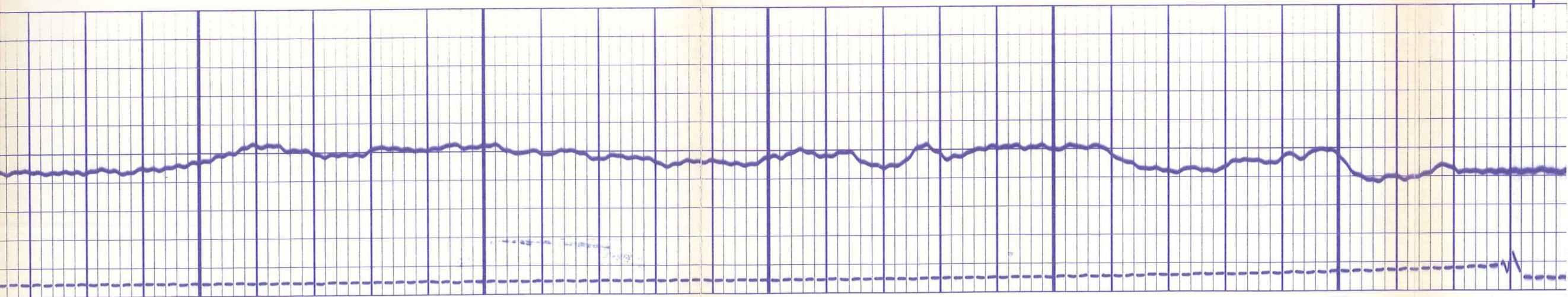




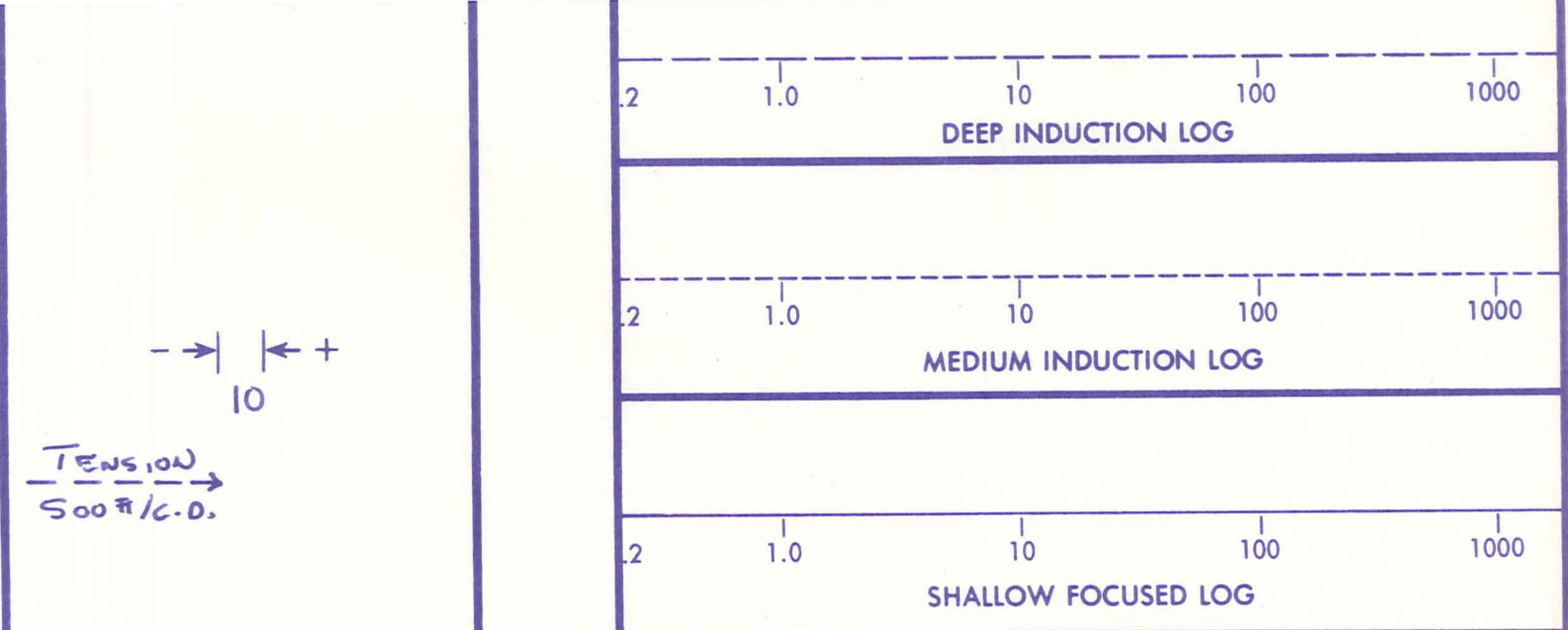


3600

3700



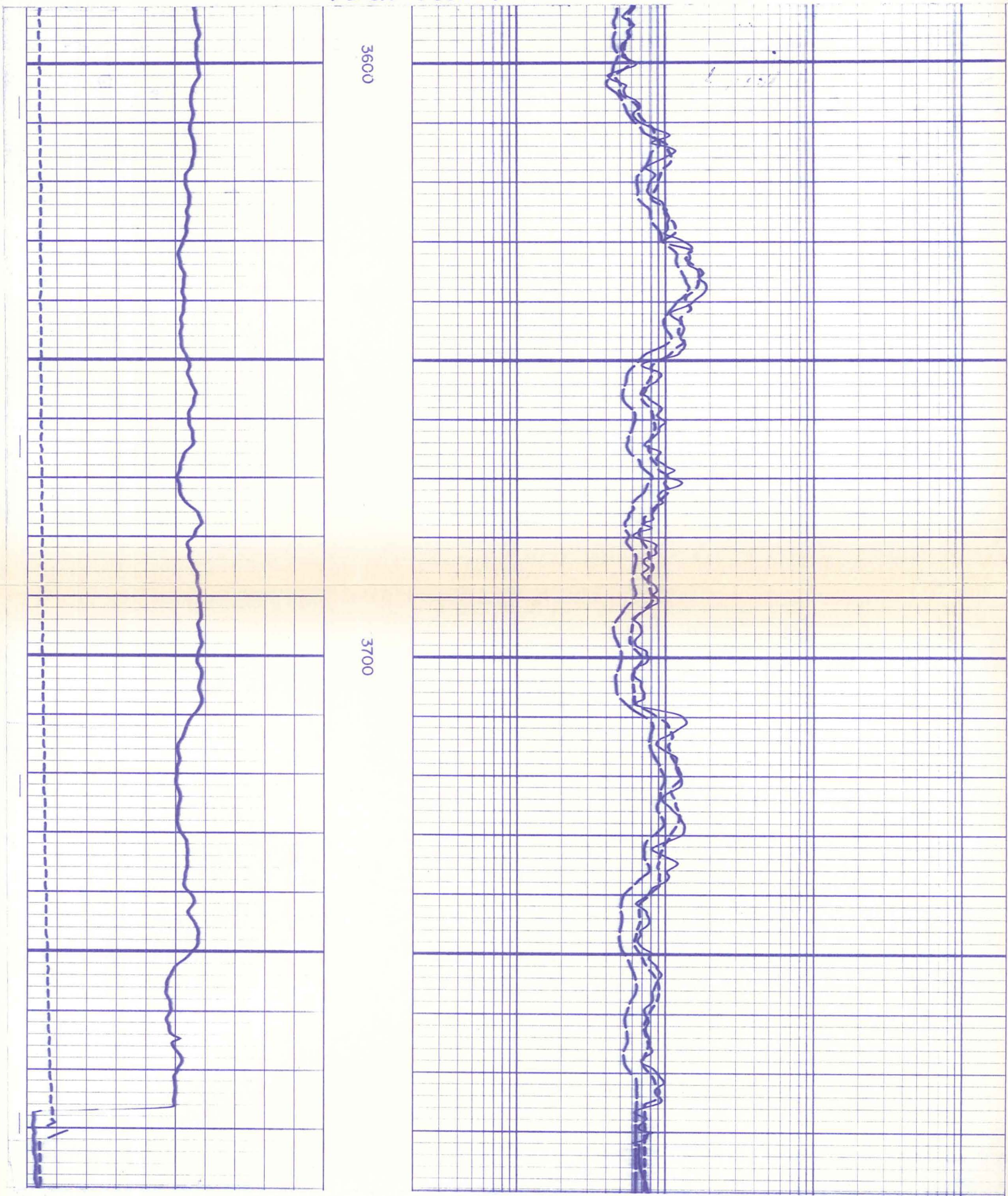




SPONTANEOUS POTENTIAL Millivolts	DEPTH	RESISTIVITY ohms - m <sup>2</sup> /m
-------------------------------------	-------	---

Company E.G.V.G. IDAHO INC.	Drillers T.D. 3889
Well RRG1-6	Log F.R. 3782
Field RAFT RIVER GEOTHERMAL	Log T.D. 3784
County CASSIA	Elevations:
State IDAHO	K.B. 4876    D.F. 4875    G.L. 4860

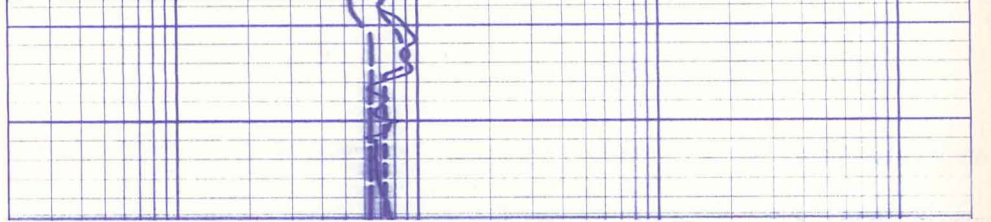
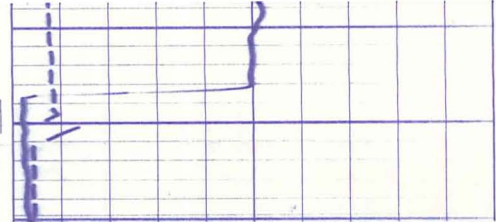
REPEAT SECTION



CALIBRATION

DUAL INDUCTION FOCUSED LOG  
(LOGARITHMIC)



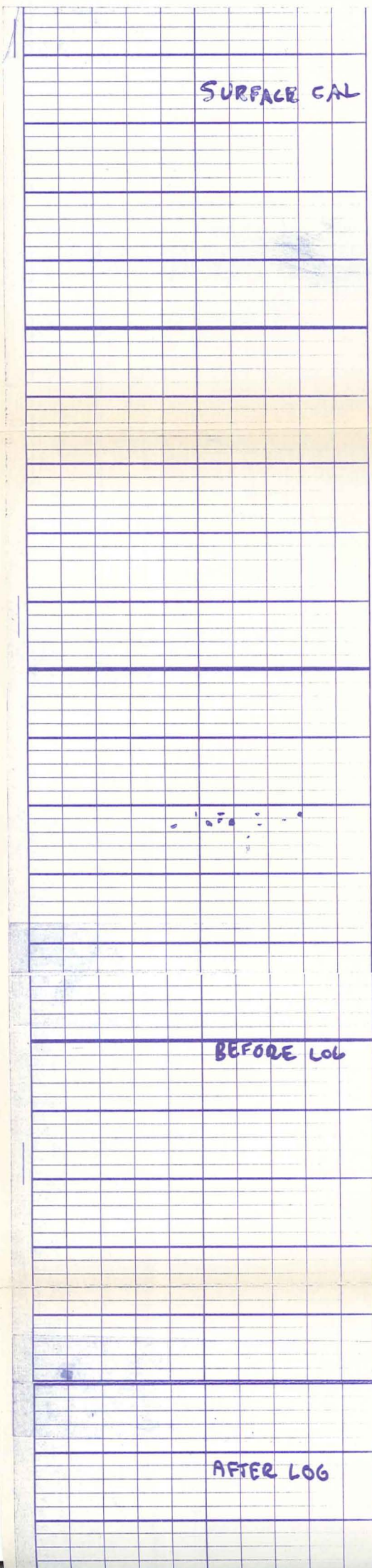


# CALIBRATION

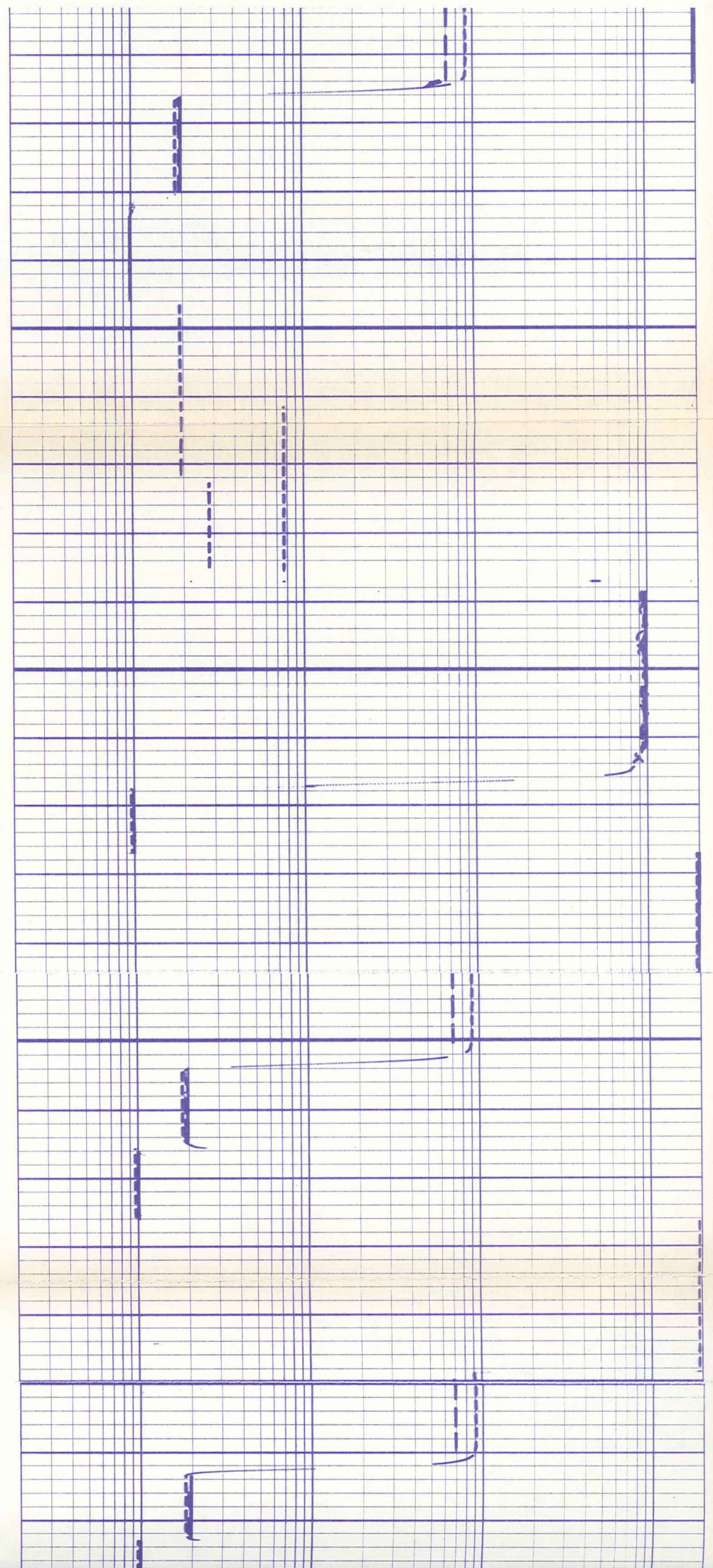
## DUAL INDUCTION FOCUSED LOG (LOGARITHMIC)

1. MECHANICAL ZERO
2. PANEL—LOW
3. PANEL—HIGH
4. ZERO CONDUCTIVITY—AIR
5. ILD TEST LOOP—SEC. OFF
6. ILD TEST LOOP—SEC. ON
7. ILM TEST LOOP
8. FL EXTERNAL
9. INTERNAL REFERENCE—LOW
10. INTERNAL REFERENCE—HIGH

925279 DIFL



10  
9  
8  
7  
6  
5  
4  
3  
2  
1  
10  
9  
3  
2  
1  
10  
9





SURFACE CAL

10

9

8

7

6

5

4

3

2

1

10

9

3

2

1

10

9

3

2

1

BEFORE LOG

AFTER LOG

