



COMPENSATED

Densilog

FILE NO. 512

COMPANY E. G. & G. IDAHO INC.

WELL RRG1-6

FIELD RAFT RIVER GEOTHERMAL

COUNTY CASSIA STATE IDAHO

LOCATION: SE 1/4 NE 1/4

SEC 25 TWP 15S RGE 26E

Other Services  
DIFF. TEMP.  
DIFL  
CNLOG  
BHC

Permanent Datum G.L. Elev. 4860  
Log Measured from G.L. 0 Ft. Above Permanent Datum  
Drilling Measured from G.L.

Elevations:  
KB 4876  
DF 4875  
GL 4860

Date	4/30/78			
Run No.	TWO			
Depth—Driller	3889			
Depth—Logger	3789			
Bottom Logged Interval	3787			
Top Logged Interval	1700			
Casing—Driller	13 3/8@ 1698	@	@	@
Casing—Logger	1696			
Bit Size	12 1/4"			
Type Fluid in Hole	WATER			
Density and Viscosity				
pH and Fluid Loss		cc	cc	cc
Source of Sample	FLOWLINE			
Rm @ Meas. Temp.	2.60 @ 70 °F	@ °F	@ °F	@ °F
Rmf @ Meas. Temp.	@ °F	@ °F	@ °F	@ °F
Rmc @ Meas. Temp.	@ °F	@ °F	@ °F	@ °F
Source of Rmf and Rmc				
Rm @ BHT	1.15 @ 158 °F	@ °F	@ °F	@ °F
Time Since Circ.	31 HRS			
Max. Rec. Temp. Deg. F.	158 °F	°F	°F	°F
Equip. No. and Location	HL6159 RSVT			
Recorded By	PERESSINI			
Witnessed By	STOKER			

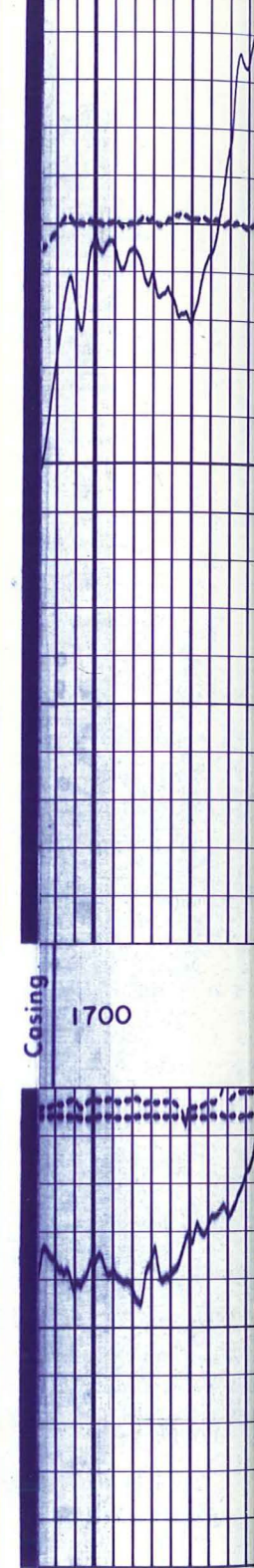
FOLD HERE *AE*

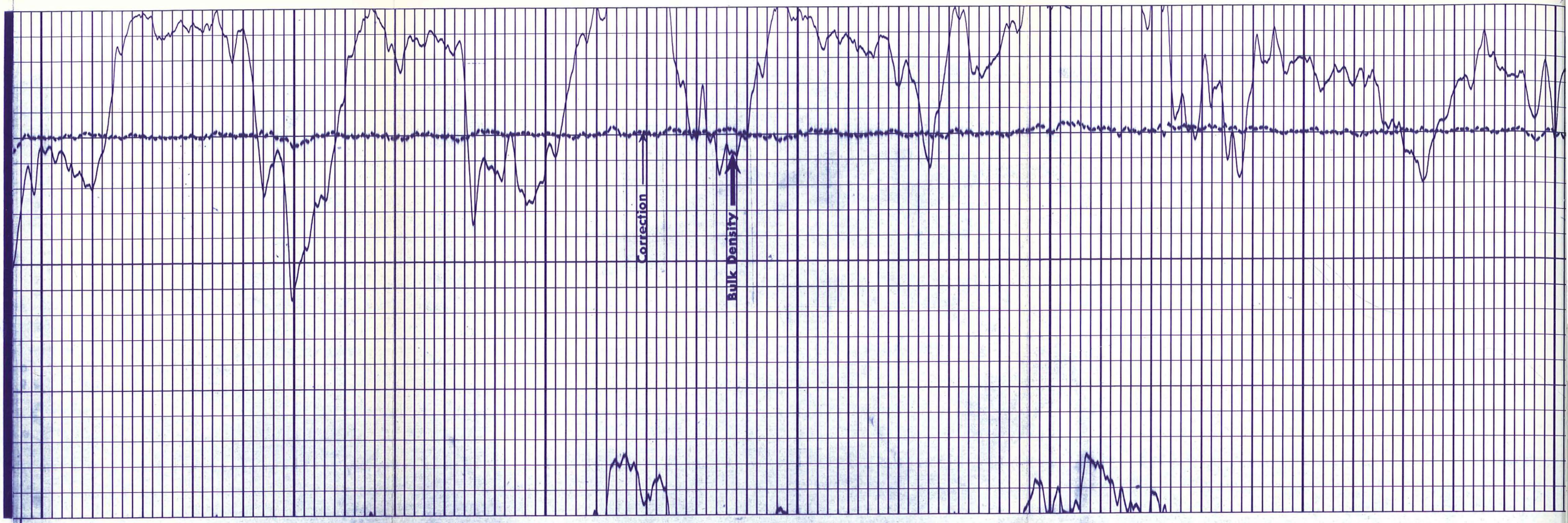
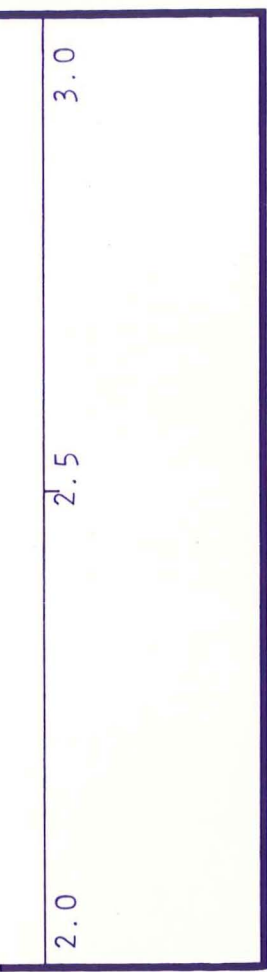
Equipment Used	
Series No.	2208
Run No.	TWO
S.O.	87780
Tool No.	29227
Elec. No.	
Panel No.	37004
	34481

Gamma Ray		Equipment Data		Densilog	
Run No.	TWO	Run No.	TWO	T.C. Sec.	2
Tool Model No.	1306	Tool Model No.	2208	Porosity Scale Data	
Serial No.	24543	Serial No.	29227	Correction Scale	- .5 - + .5
Diam.	3 5/8"	Diam.	3"	Density Scale	2.0-3.0
Detect. Model No.	D6G4	Computer Model No.	3457		
Type	SCINT	Serial No.	37004		
Length	6"	Source Model No.	S3E20		
Dist. to Source	5'	Serial No.	C-116		
General		Computer Data		Gamma Ray	
Hoist Truck No.	HL6159			T.C. Sec.	2
'Auxiliary Equipment				Sens. Settings	616
				Zero Div. L or R	0
				API G.R. Units/Div.	15

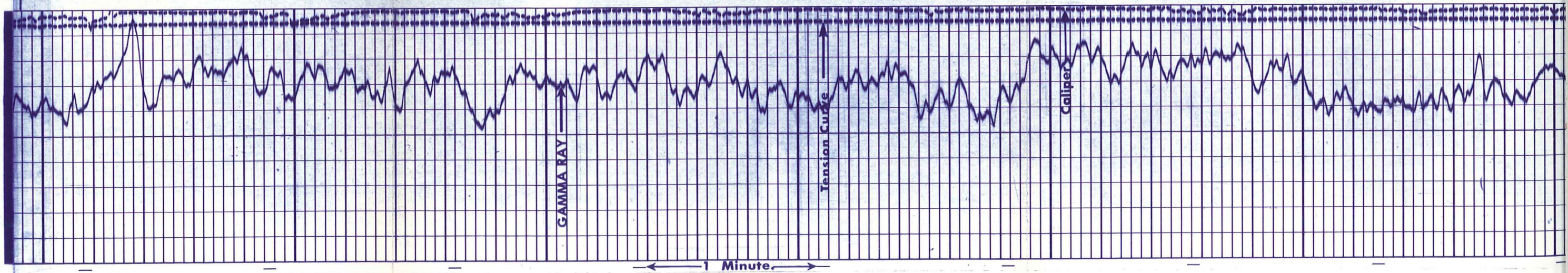
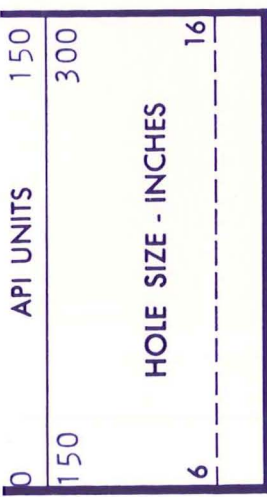
General		Logging Data	
Run No.	2	T.C. Sec.	2
From	3980	Density Scale	2.0-3.0
To	1700	Correction Scale	- .5 - + .5
Speed Ft./Min.	30		

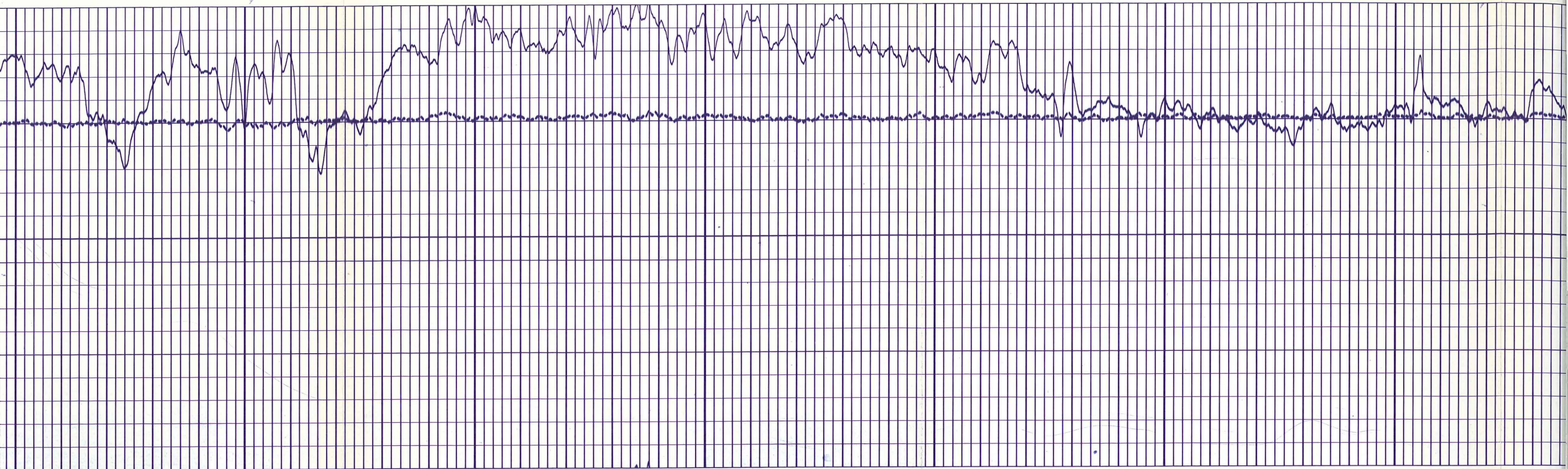
<b>GAMMA RAY &amp; CALIPER</b> Tension Curve 500LBS/CD API UNITS 150 300 HOLE SIZE - INCHES 6	<b>DEPTH</b> 1700 Casing	<b>BULK DENSITY GRAMS/CC</b> CORRECTION - .5      0      + .5 2.0      2.5      3.0





Casing 1700 1800 1900 2000

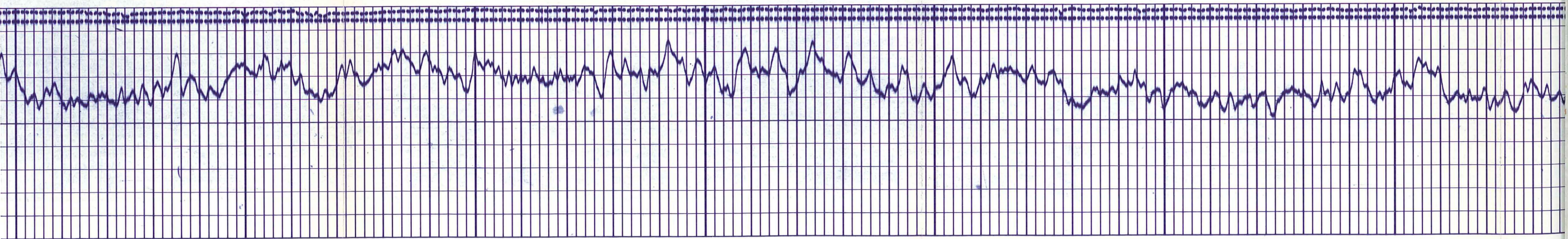


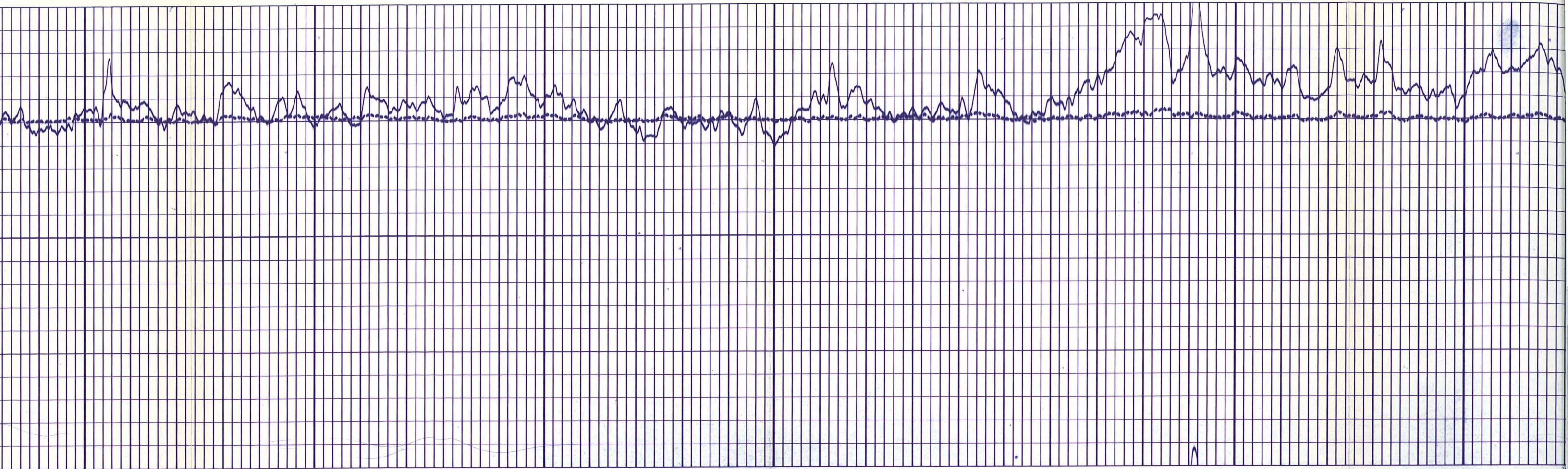


2000

2100

2200

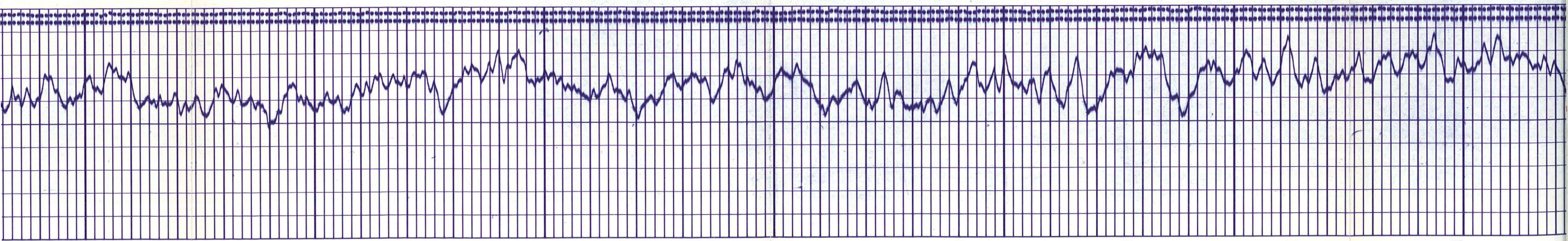




2300

2400

2500

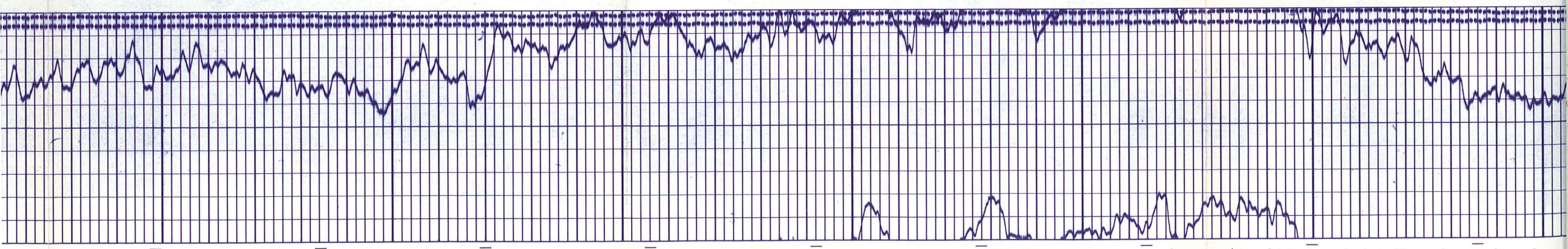


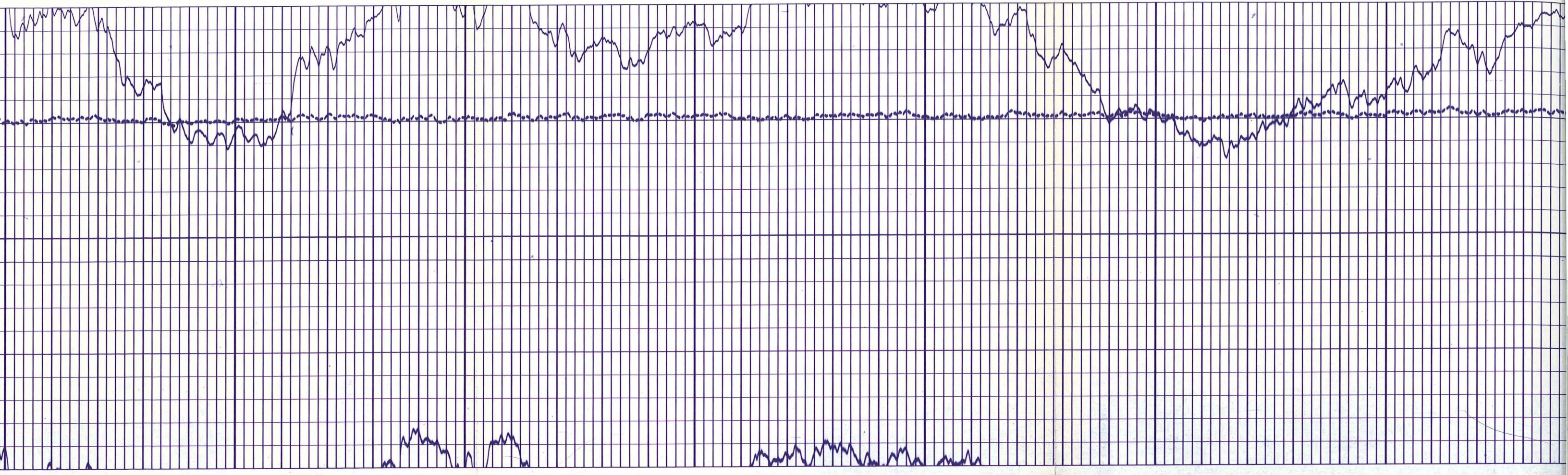


2600

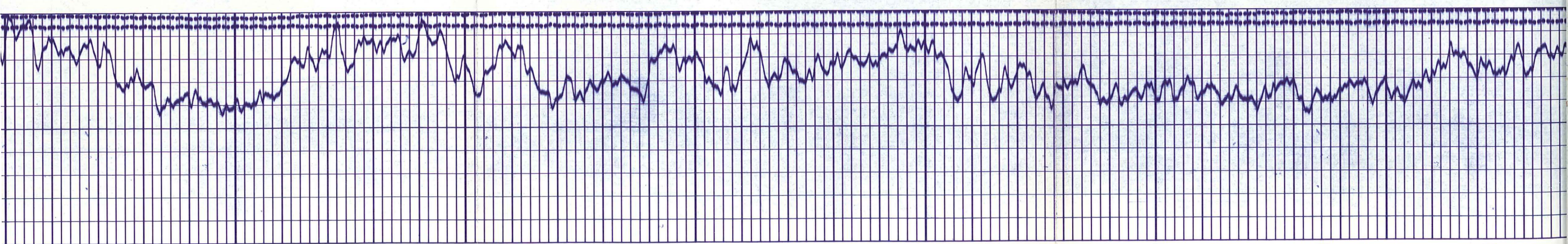
2700

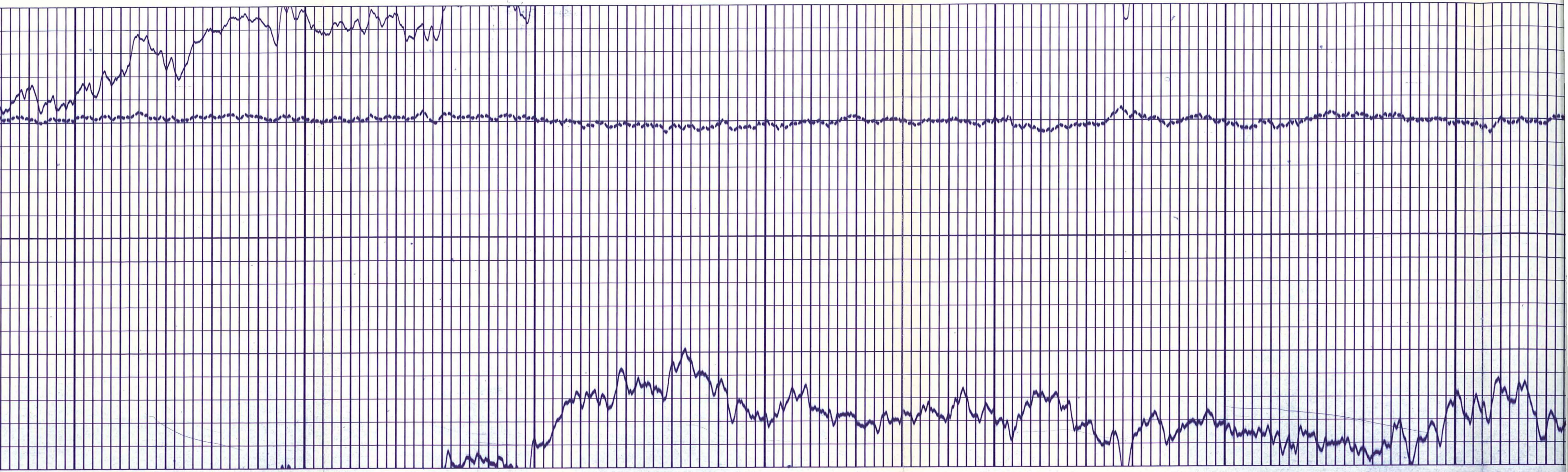
2800





800 2900 3000 3100



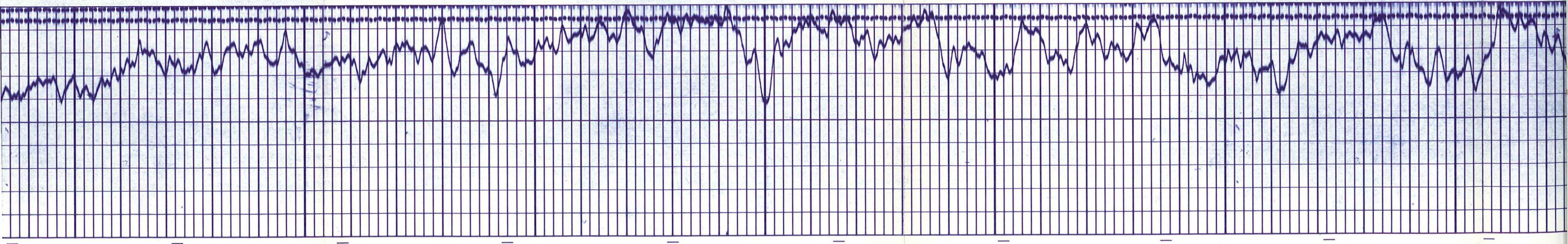


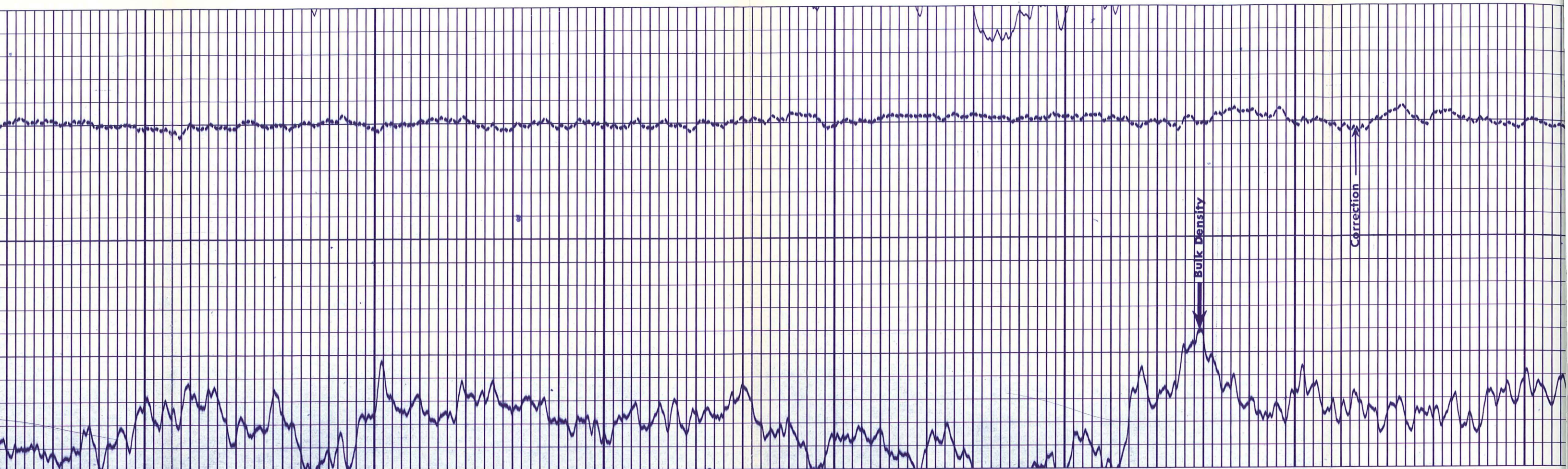
3100

3200

3300

3400



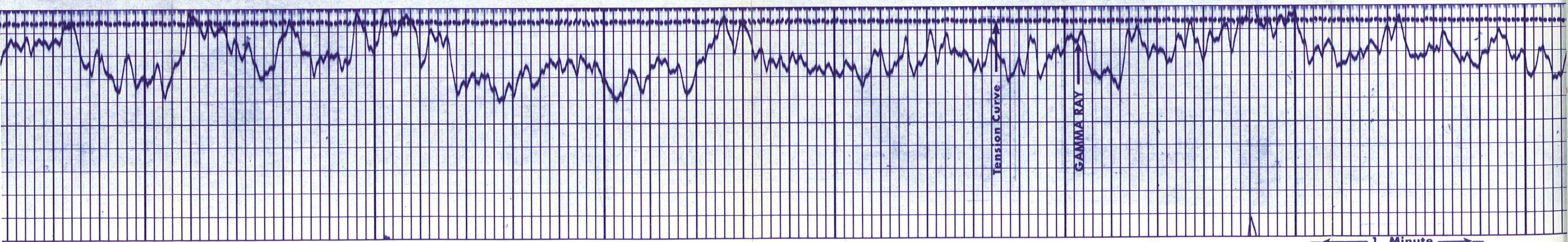


3400

3500

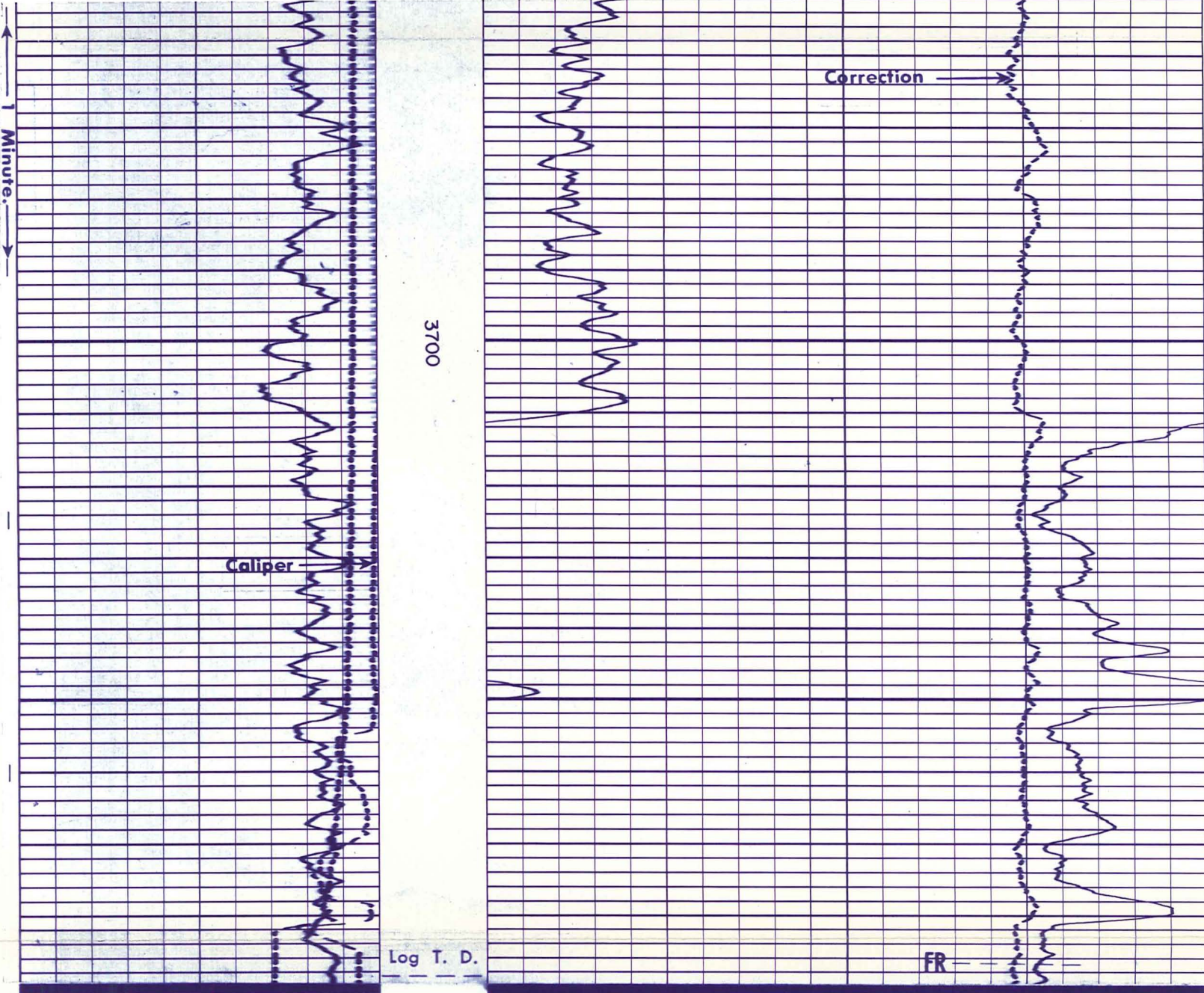
3600

3700



1 Minute.



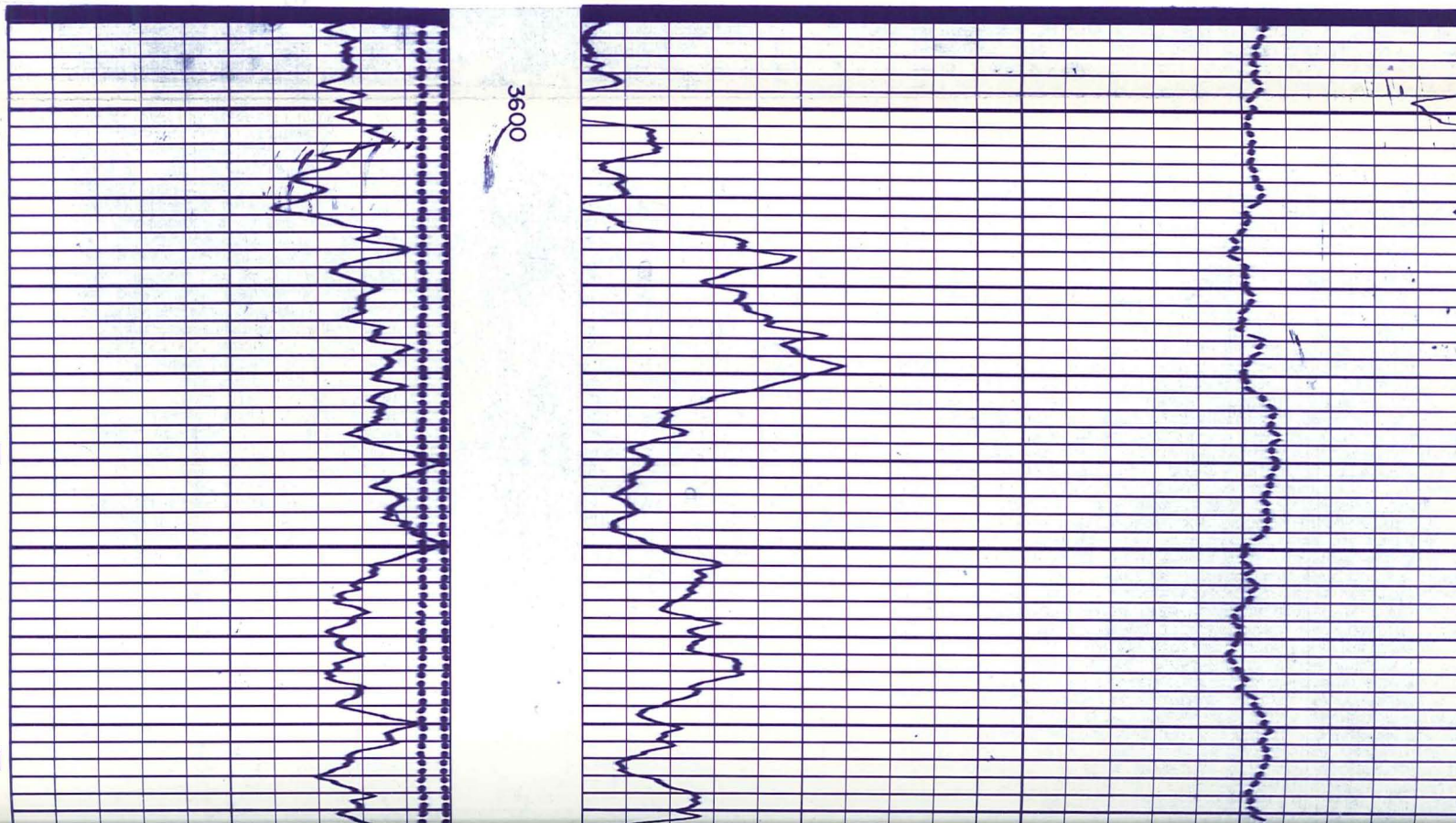


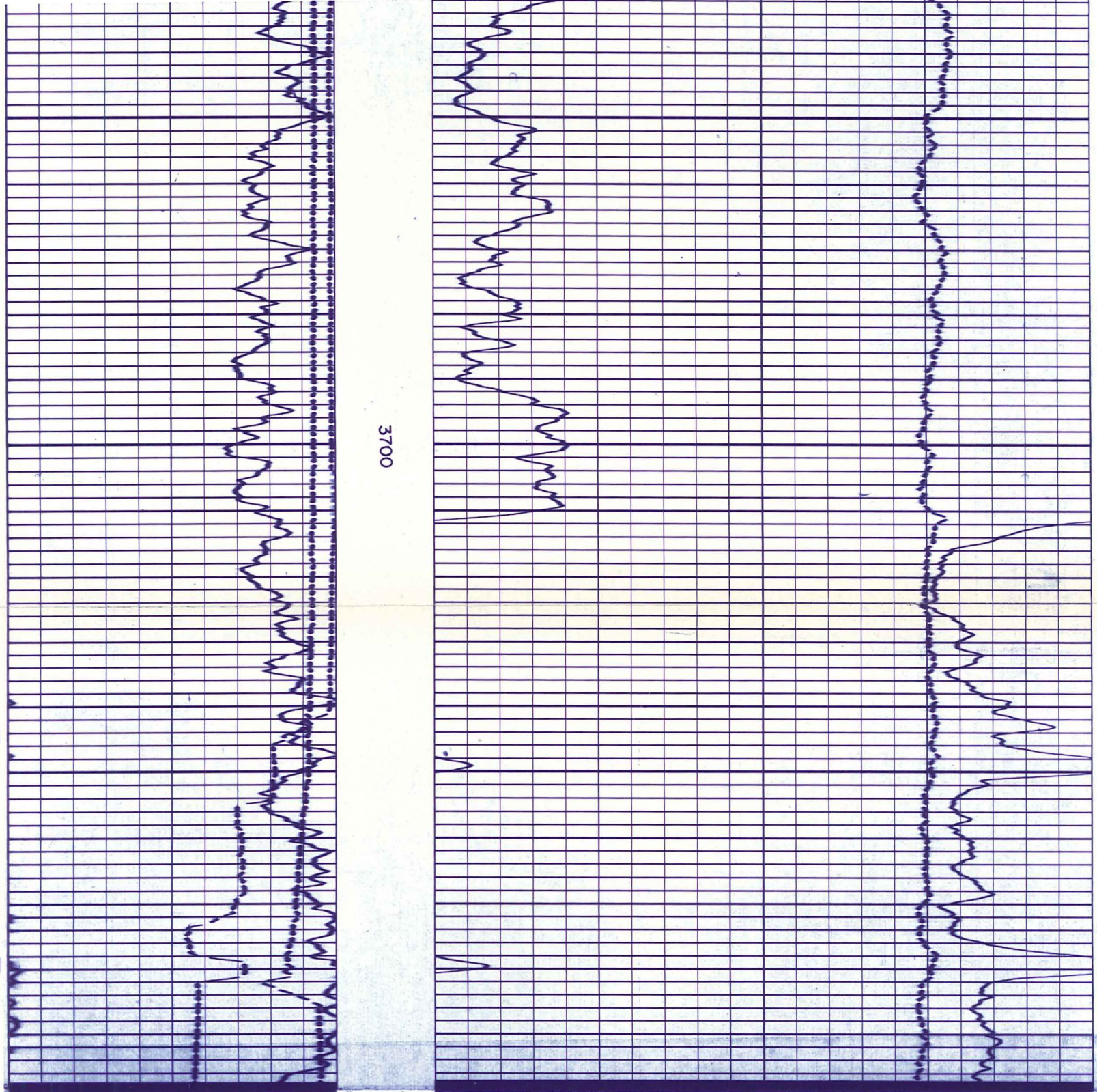
6	16
HOLE SIZE - INCHES	
150	300
API UNITS	
0	150
← Tension Curve 500LBS/CD	

2.0	2.5	3.0
CORRECTION		
- .5      0      + .5		

GAMMA RAY & CALIPER		DEPTH	BULK DENSITY GRAMS/CC		
Company	E. G. & G. IDAHO INC.		Drillers T.D.	3889	
Well	RRGI-6		Log F.R.	3787	
Field	RAFT RIVER GEOTHERMAL		Log T.D.	3789	
County	CASSIA		Elevations:		
State	IDAHO		K.B.	4875	D.F. 4875      G.L. 4866

**REPEAT SECTION**





### CALIBRATION

#### GAMMA RAY

1. MECHANICAL ZERO
2. PANEL—LOW
3. PANEL—HIGH
4. COUNT RATE METER
5. BACKGROUND READING
6. GAMMA RAY—HIGH

API UNITS OF CALIB. STD. ....	185
SENSITIVITY READING .....	200
MULTIPLIER .....	X2
ZERO SUPPRESSION .....	0
TIME CONSTANT .....	X2
MEASURED CHART DIVISIONS .....	4

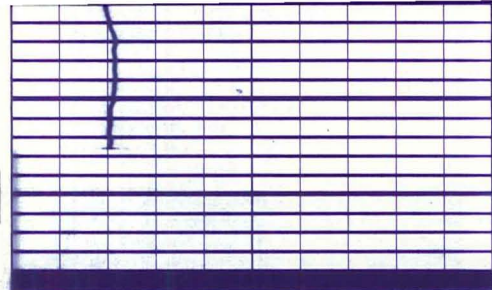
### CALIBRATION BEFORE SURVEY



### CALIBRATION AFTER SURVEY

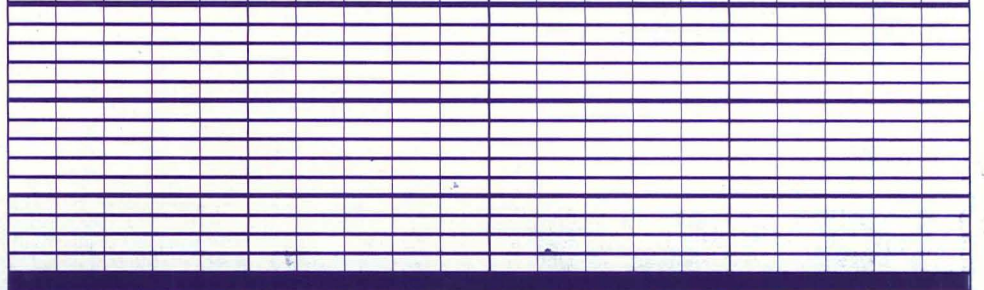


925275 GR

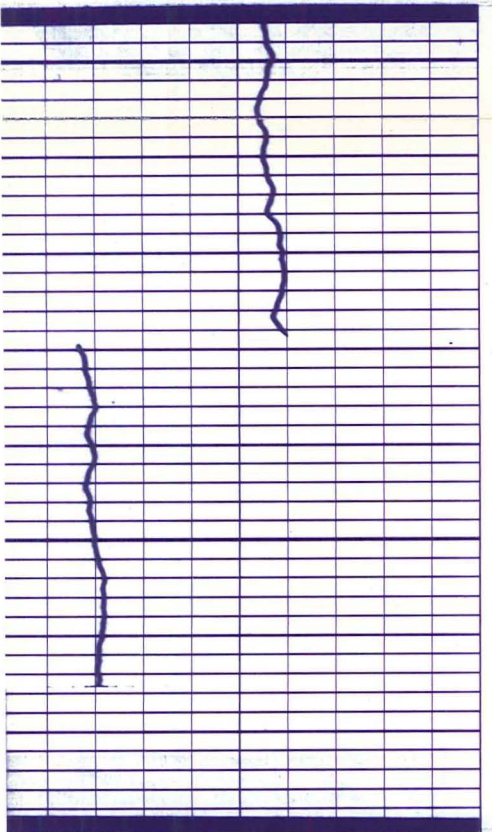


2

1



**CALIBRATION AFTER SURVEY**



6

5

2

1

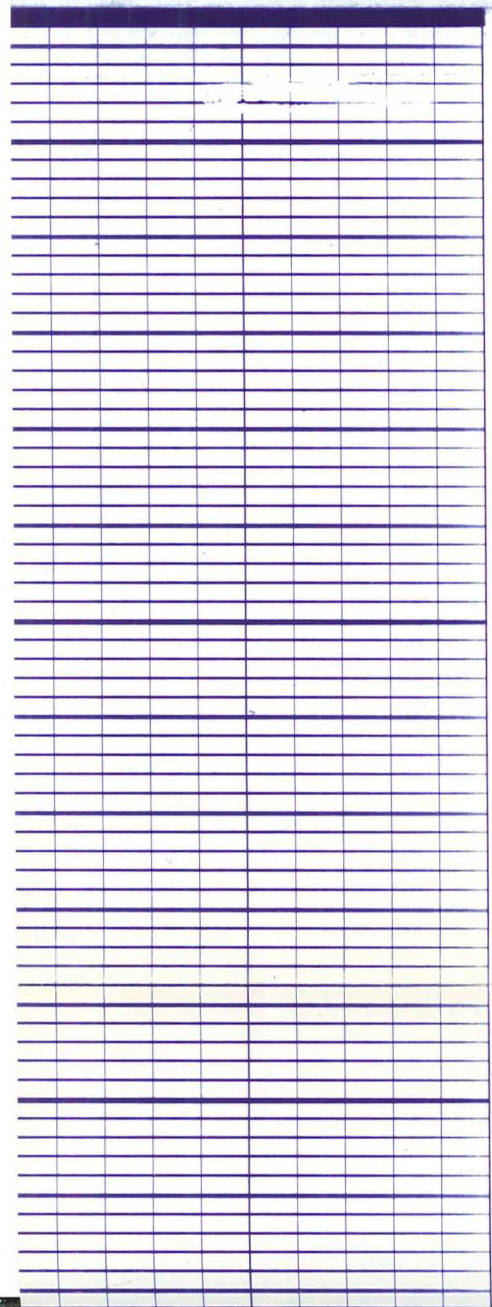
**CALIBRATION**

**COMPENSATED DENSILOG**

- 1. MECHANICAL ZERO
- 2. PANEL—LOW
- 3. PANEL—HIGH
- 4. CALIPER—LOW
- 5. CALIPER—HIGH
- 6. DENSITY—LOW
- 7. DENSITY—HIGH
- 8. DENSITY—CORRECTION

923276 C01

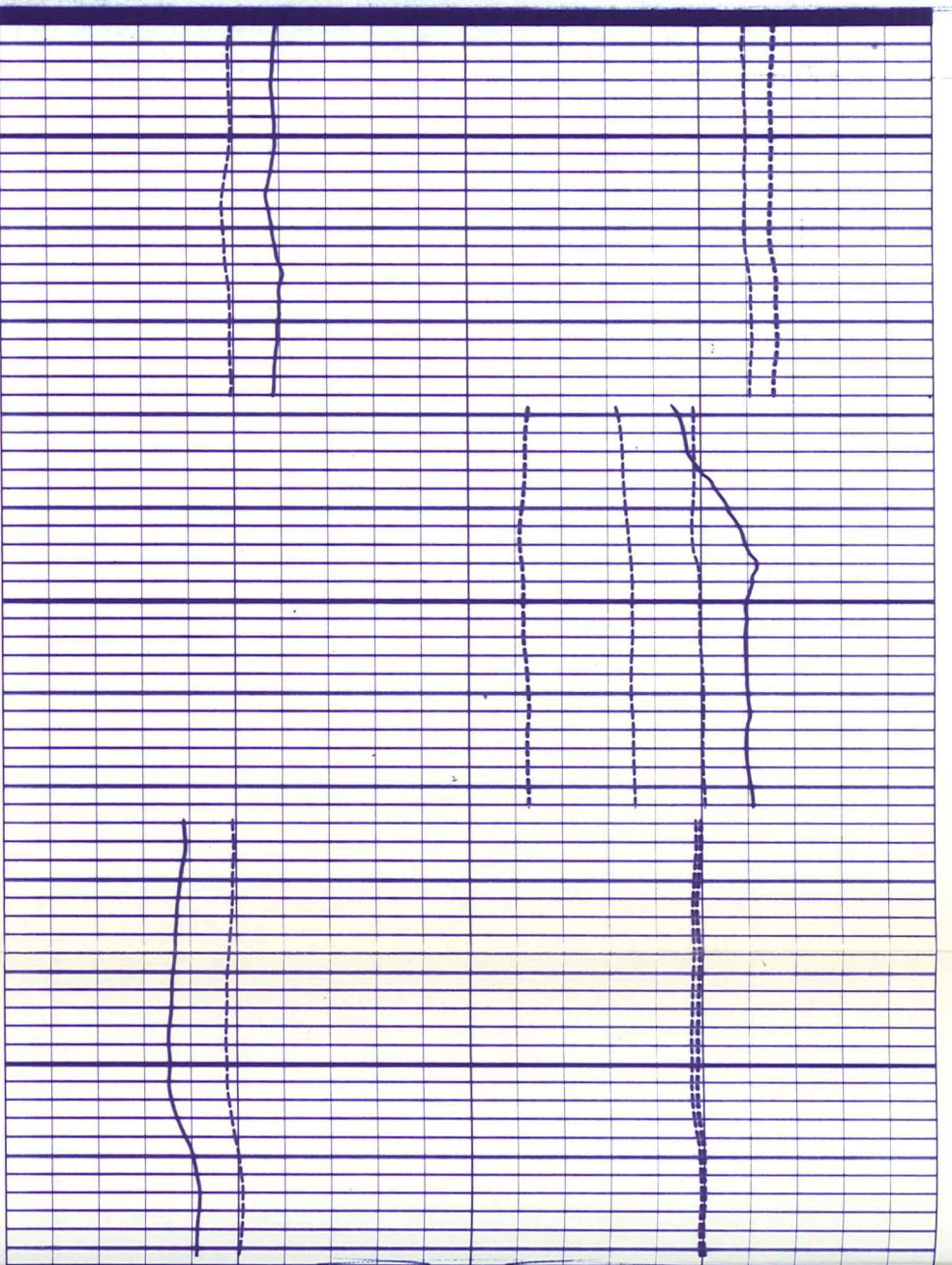
**CALIBRATION BEFORE SURVEY**

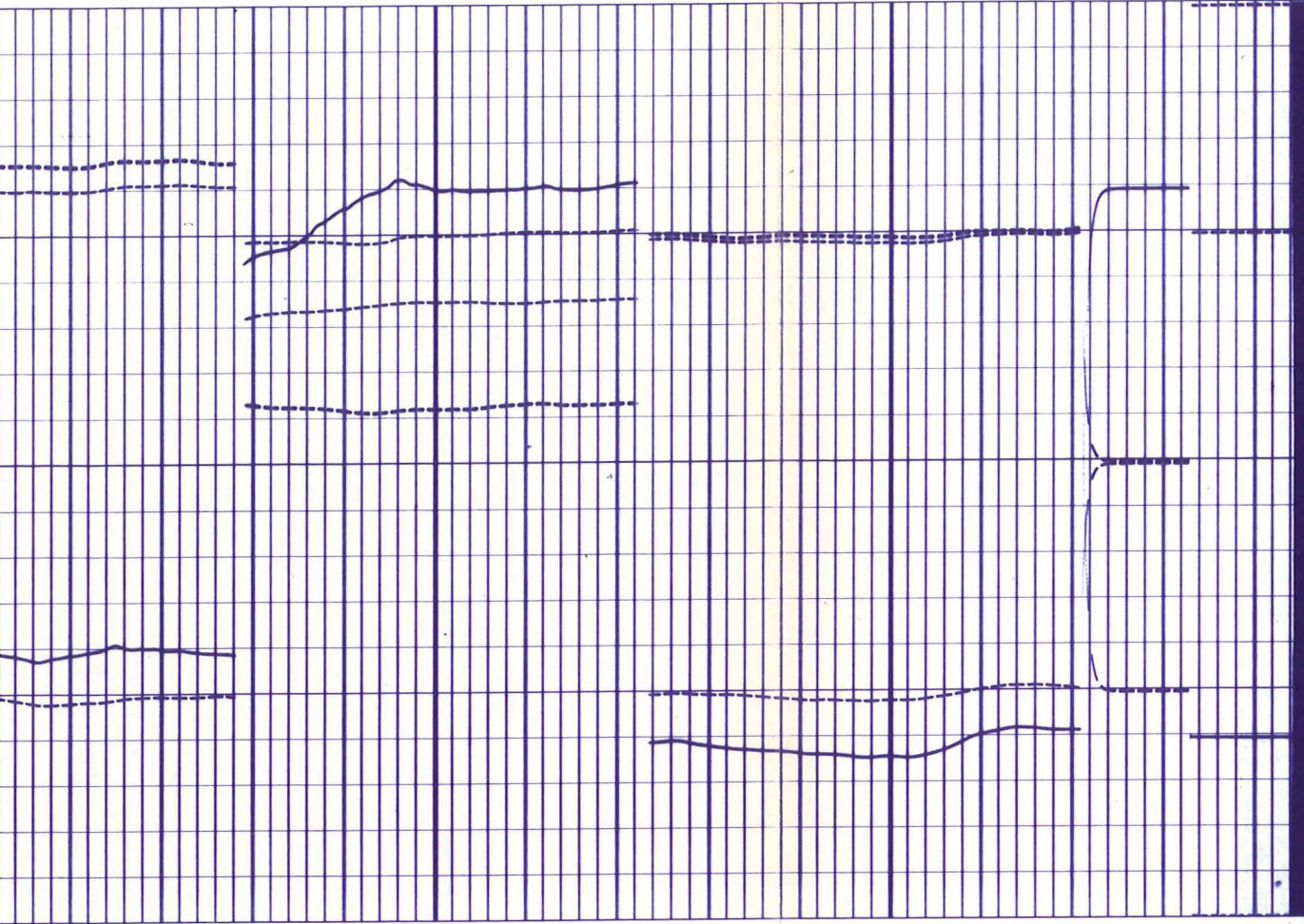


8

7

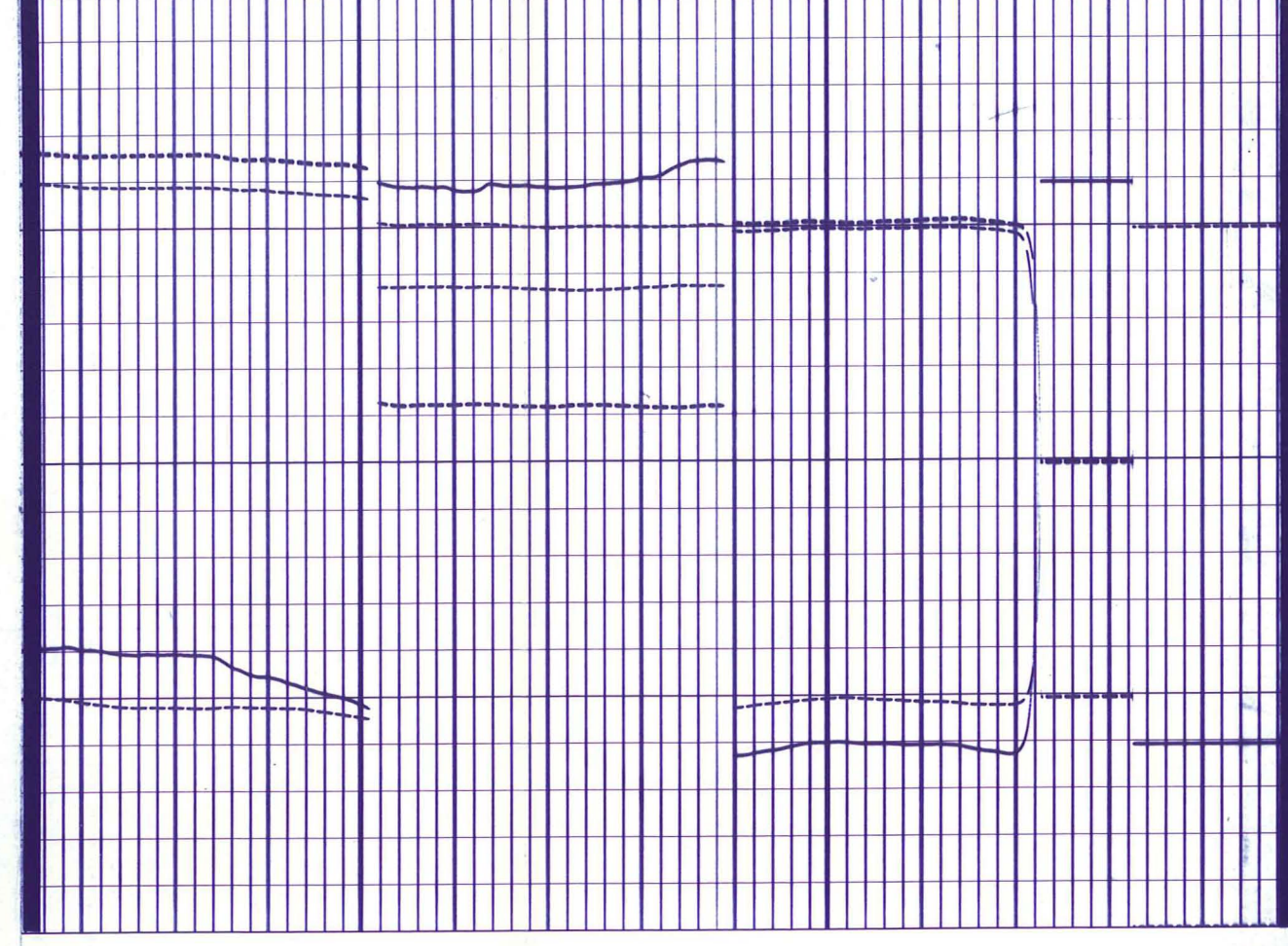
3





8  
7  
3  
2  
1

**CALIBRATION AFTER SURVEY**



8  
7  
3  
2  
1