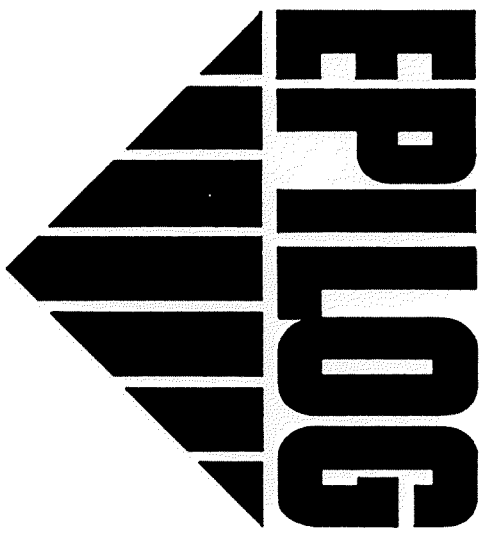


Dresser Atlas



*Complex Reservoir Analysis*

COMPANY E. G. & G. IDAHO, INC.  
 WELL RRGI - 6  
 FIELD RAFT RIVER GEOTHERMAL  
 COUNTY CASSIA STATE IDAHO  
 LOCATION SEC 25 NE 155 RGE 26E  
 ELEVATION: KB 4876 DF 4875 GL 4860  
 DATE MAY 8, 1978

FOLD HERE ↓

In making interpretations of logs our employees will give Customer the benefit of their best judgment, but since all interpretations are opinions based on inferences from electrical or other measurements, we cannot, and we do not guarantee the accuracy or the correctness of any interpretation. We shall not be liable or responsible for any loss, cost, damages, or expenses whatsoever incurred or sustained by the Customer resulting from any interpretation made by any of our employees.

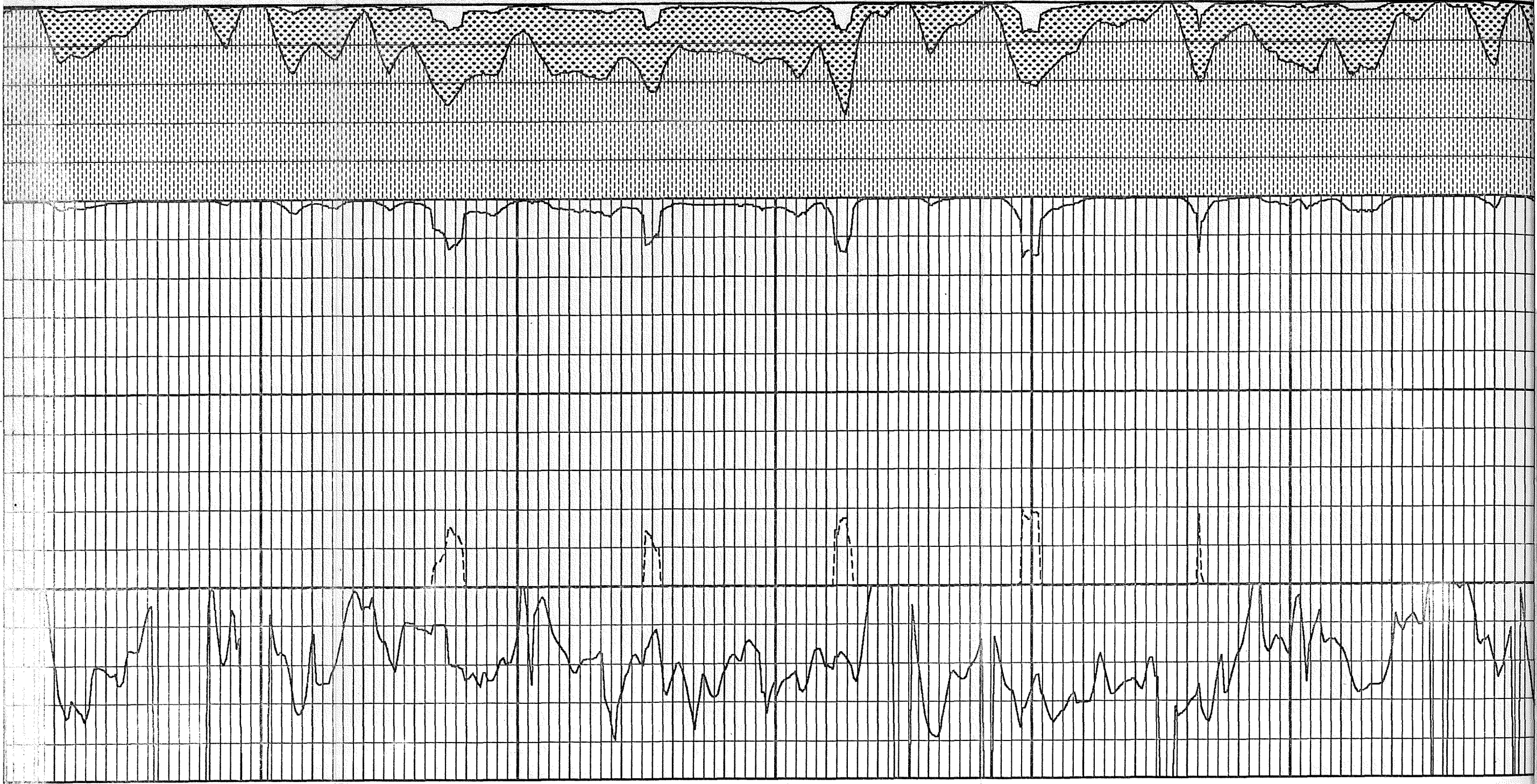
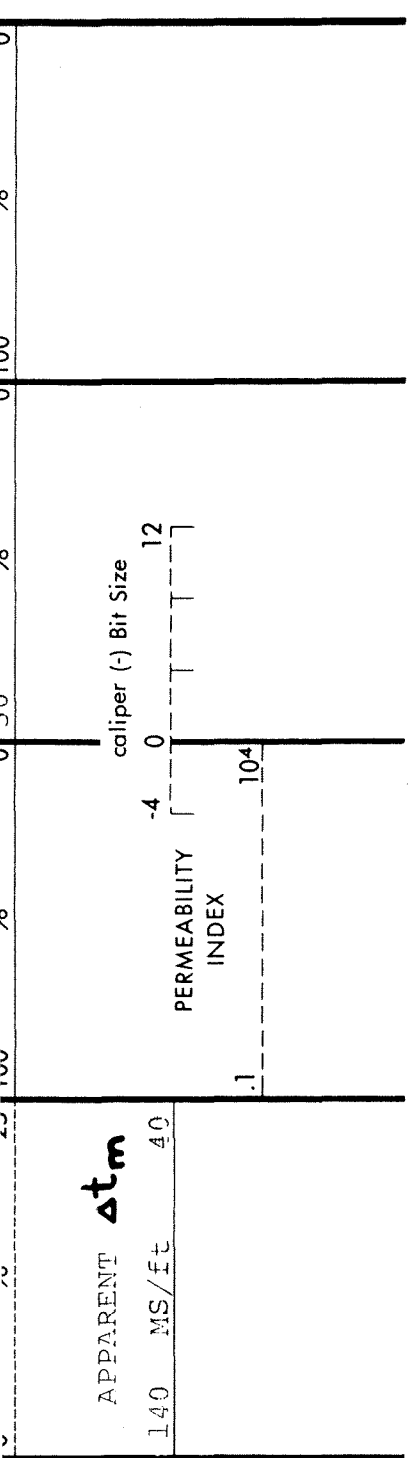
Computation	Logs Used: DIFL, CDL-CNLOG, DENSILOG, BHC-AC	Program: CRA
	Center: DCC	Log Analyst: WHITLOCK/DELLA Date: 5/8/78
Field Data	Location: ROOSEVELT	Engineer: PERESSINI Date: 4/30/78

COMPUTATION PARAMETERS

DEPTH INTERVAL		$\Delta t_{sh}$	$T_m$	$\phi_{Nsh}$	$R_{sh}$	$R_{tcl}$	$R_{tsh}$	$R_w$	a	m
FROM	TO									
2000	3790	140	65.5	30	2	23	2	1.5	.62	2.15

REMARKS:

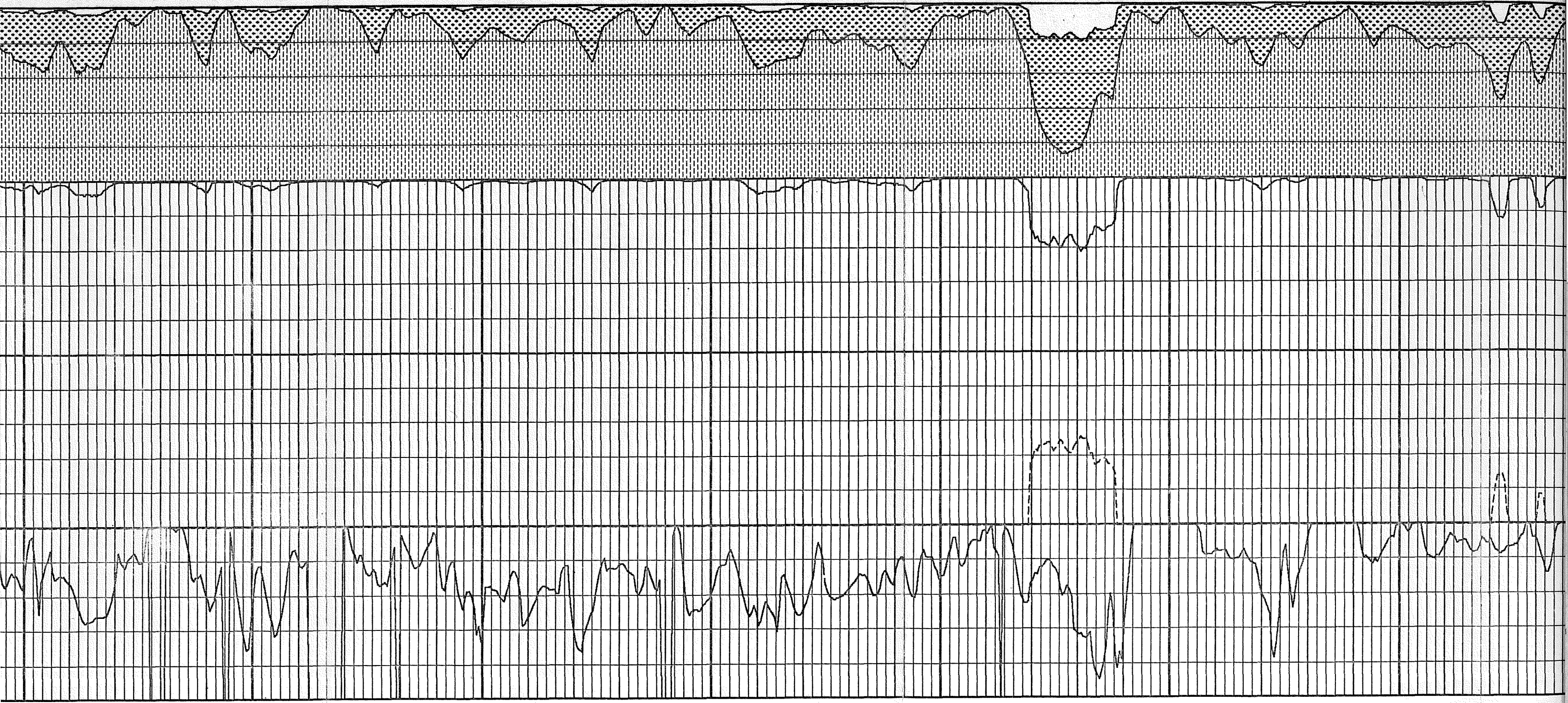
DEPTH	LITHOLOGIC CHARACTERISTICS	PRODUCTION CHARACTERISTICS	POROSITY AND FLUIDS % BULK VOLUME		FORMATION % BULK VOLUME		
			HYDROCARBON	WATER	CLAY	OTHER MINERALS	POROSITY
	SECONDARY POROSITY 0 % 25	WATER SATURATION 100 %	50 %	0	100 %		0
	APPARENT $\Delta t_m$ 140 MS/ft 40	PERMEABILITY INDEX .1	caliper (-) Bit Size -4 0 12				



02100

02200

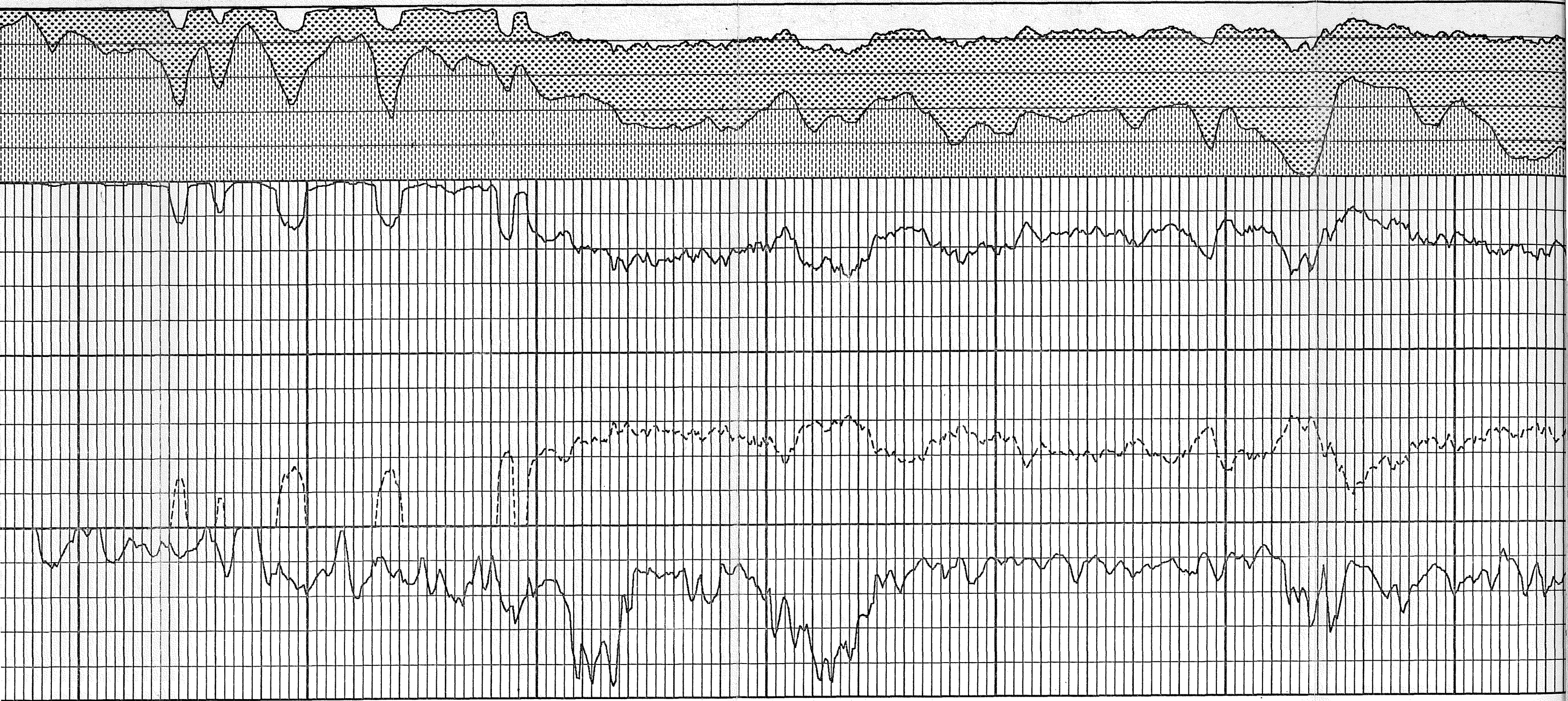
0



0230

0240

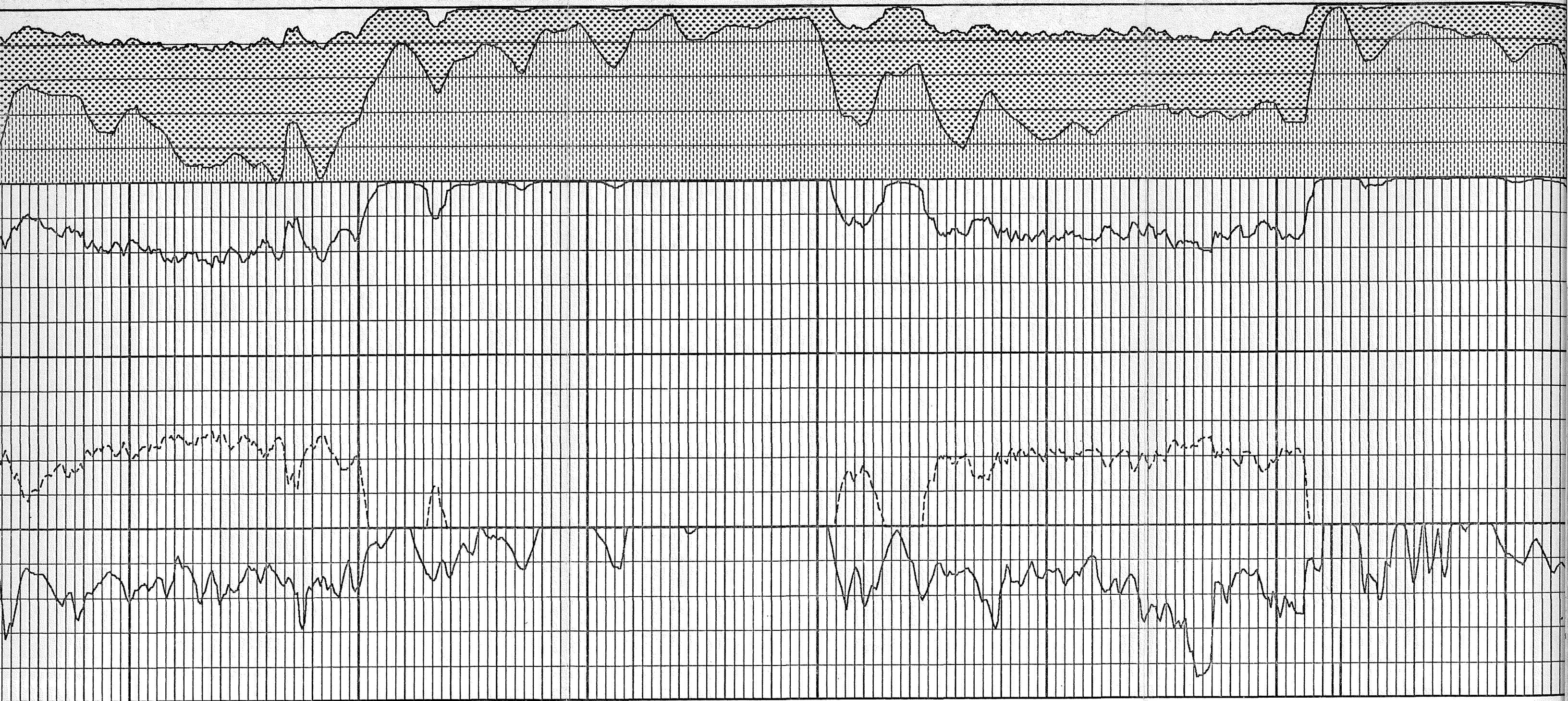
0250



02600

02700

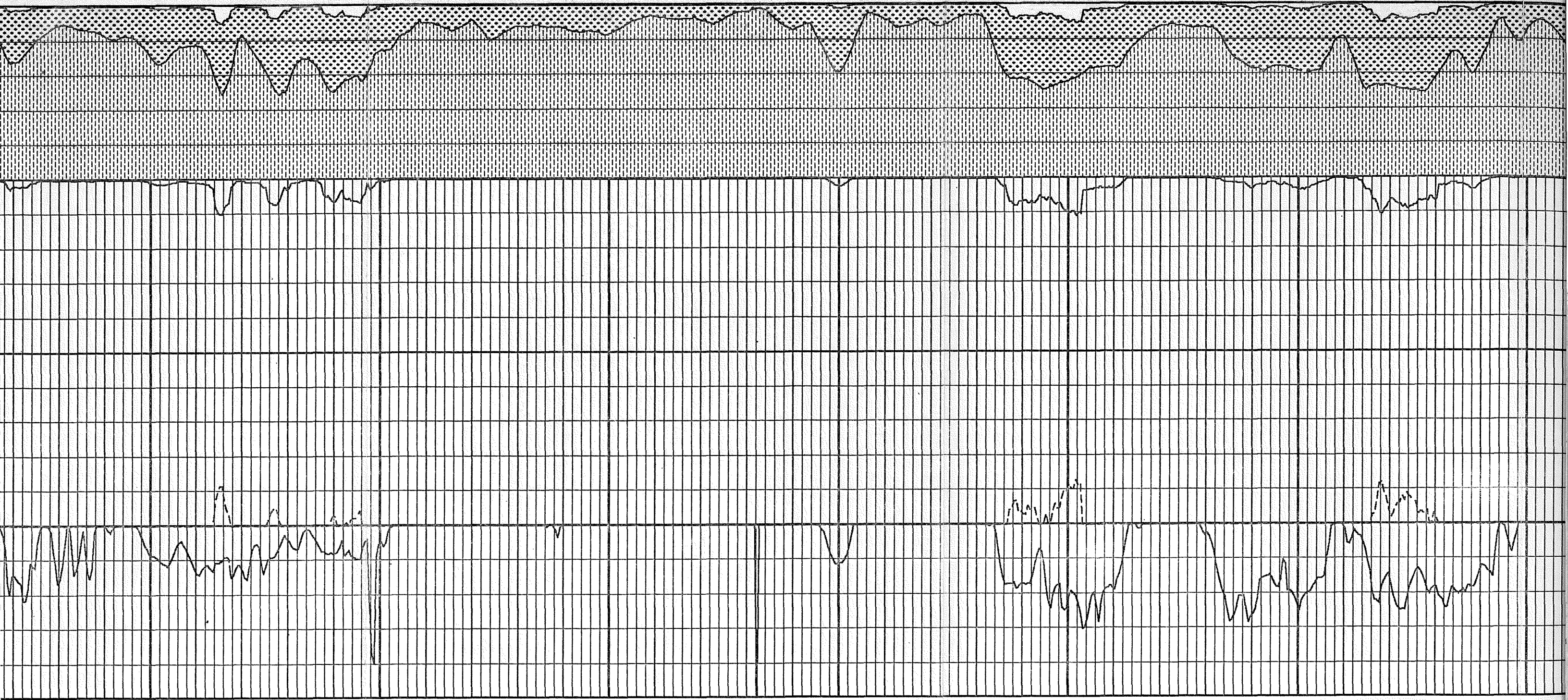
02800



02900

03000

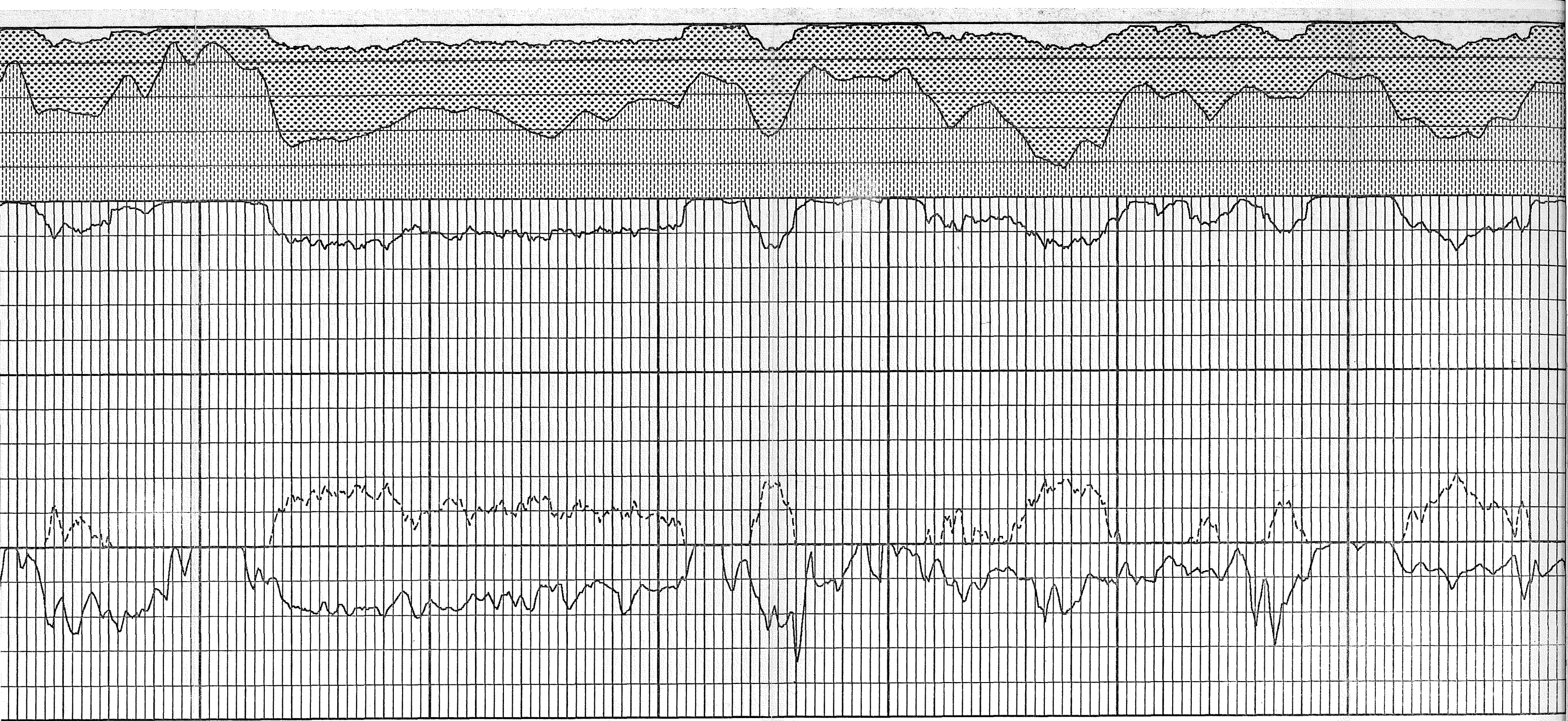
03100



03200

03300

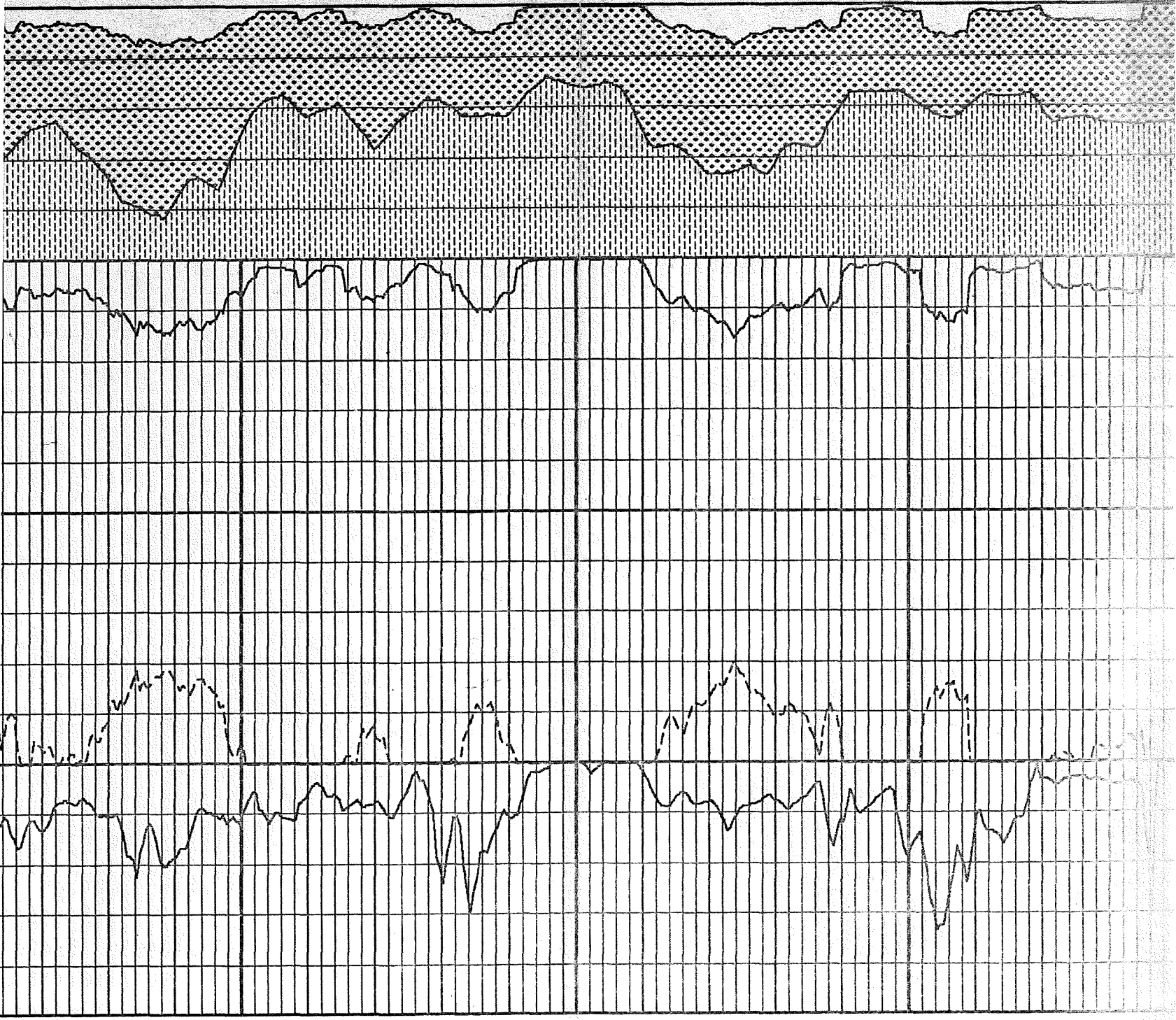
03400



0350

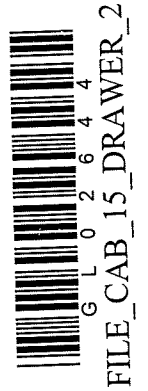
0360

0370



03700

COMPANY E. G. & G. IDAHO, INC.  
WELL RUGJ - 6  
FIELD RAFT RIVER GEOTHERMAL  
COUNTY CASSIA  
STATE IDAHO



FILE\_CAB\_15\_DRAWER\_2