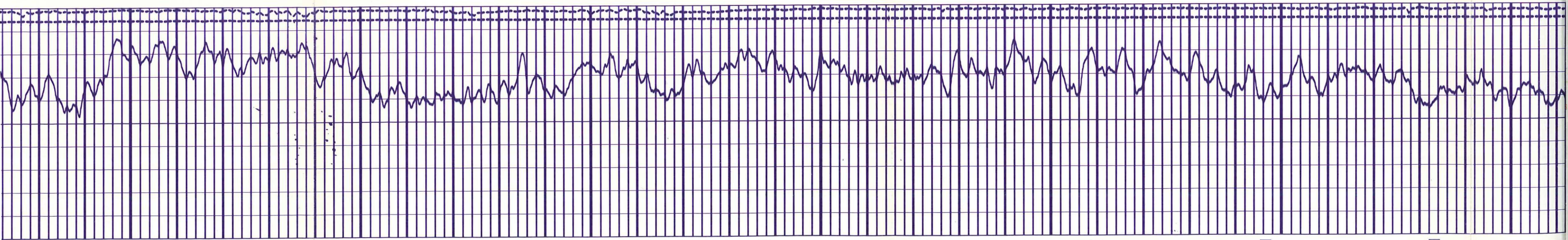


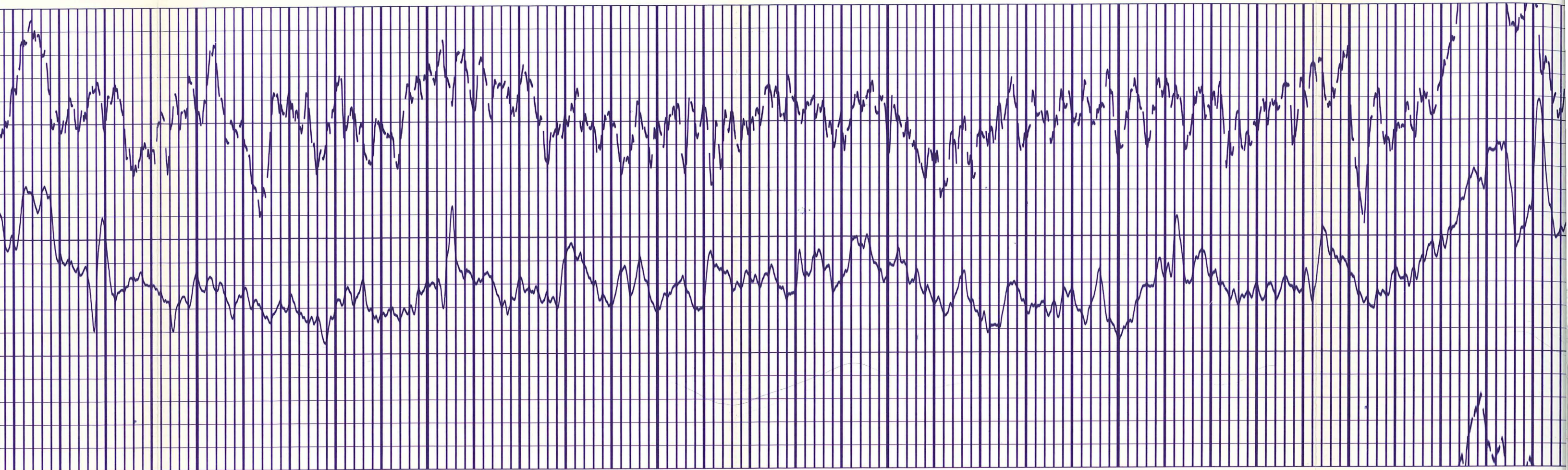
1900

2000

2100

2200

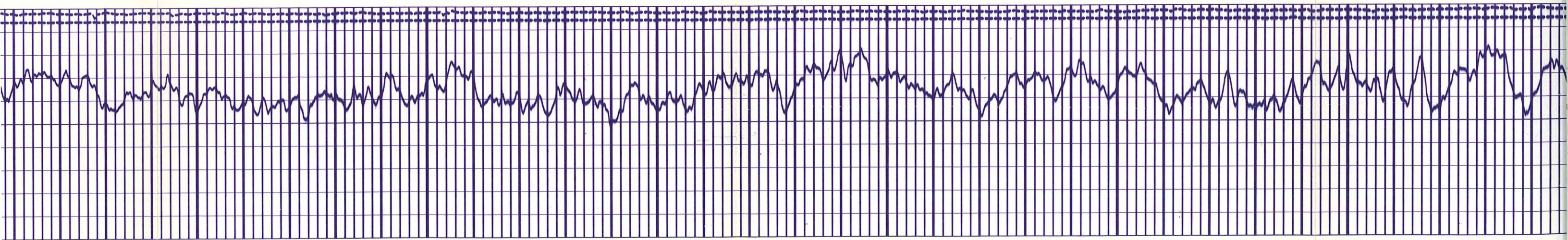


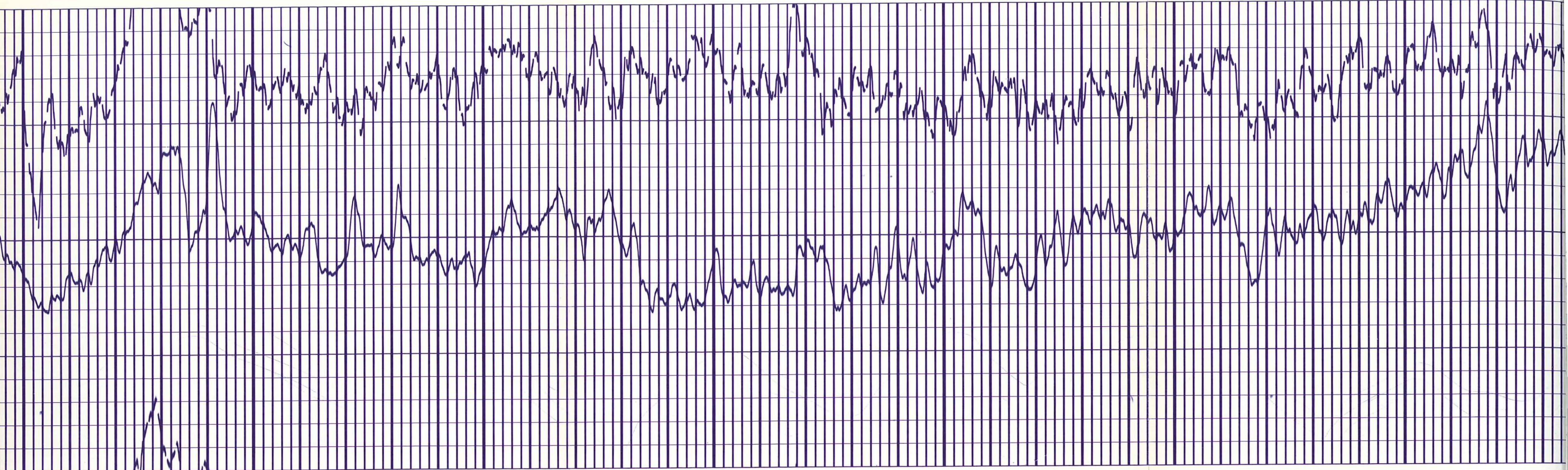


2200

2300

2400

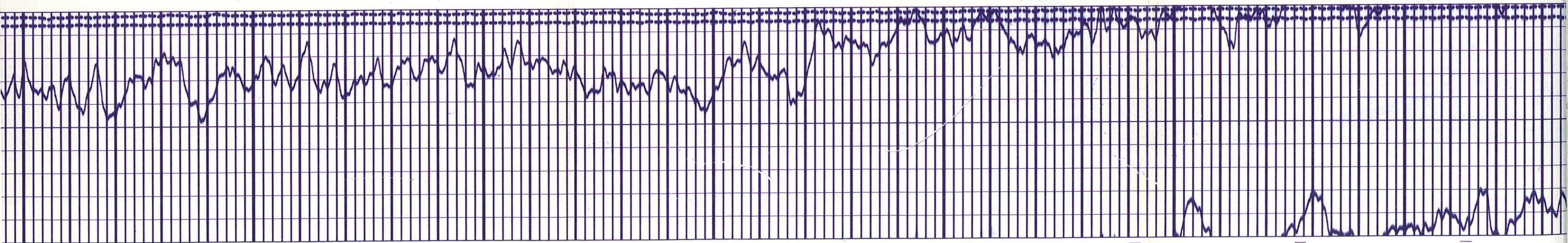


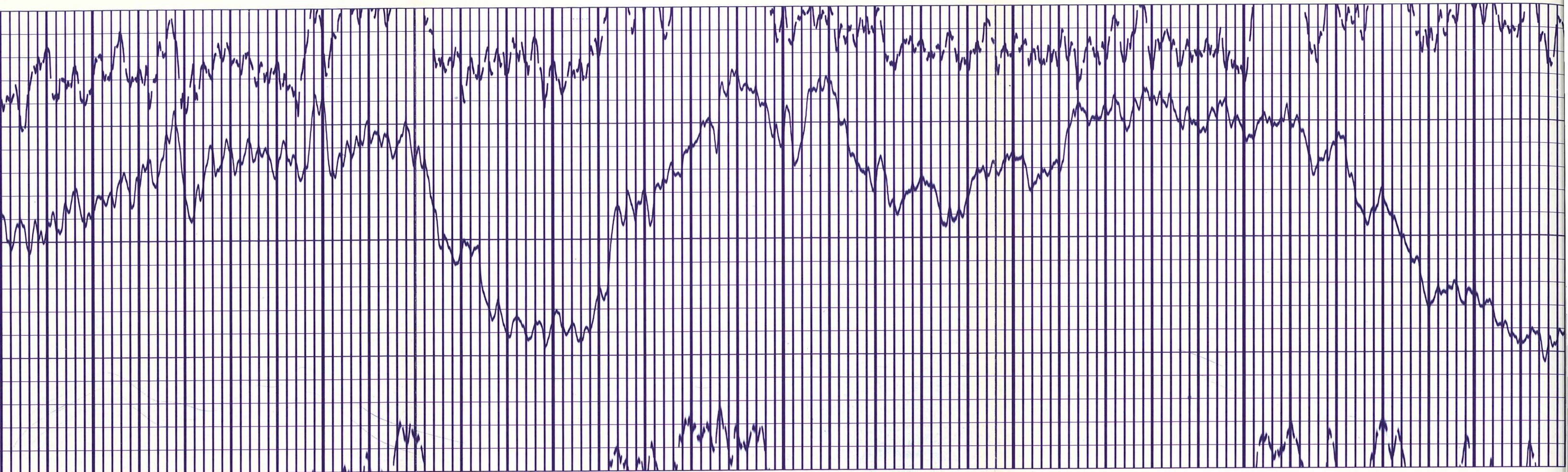


2500

2600

2700

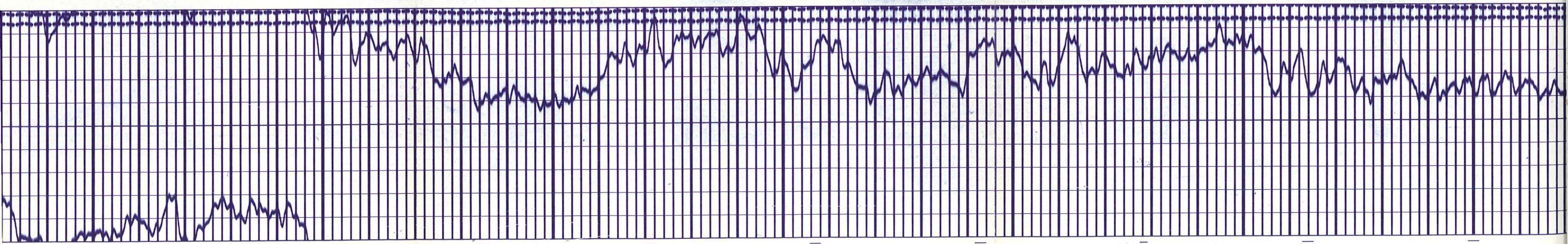


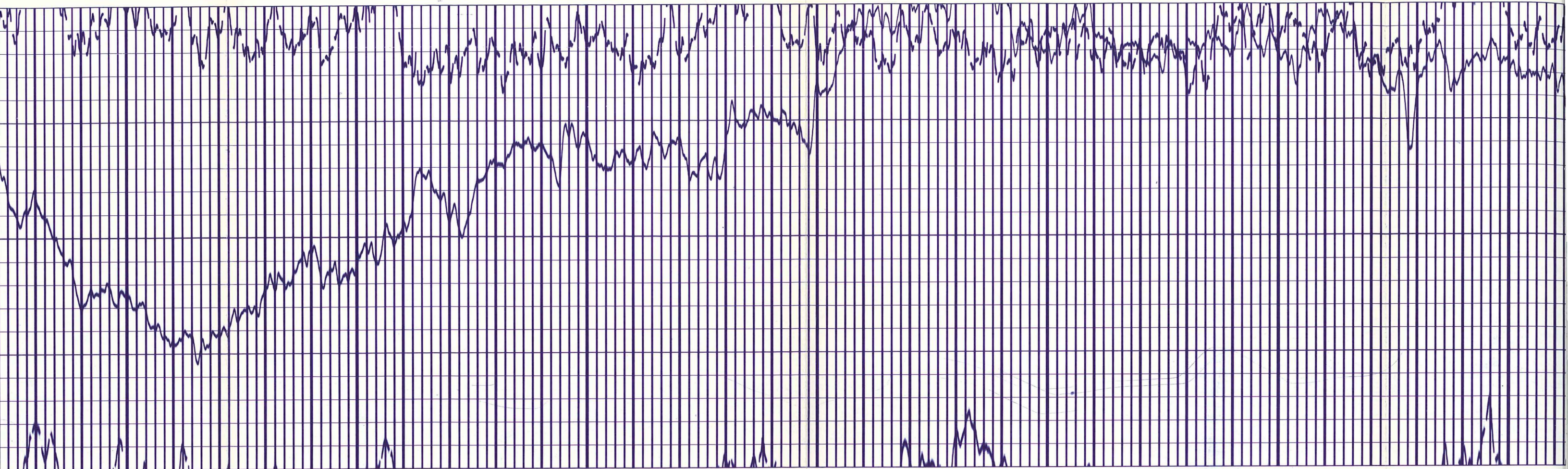


2800

2900

3000

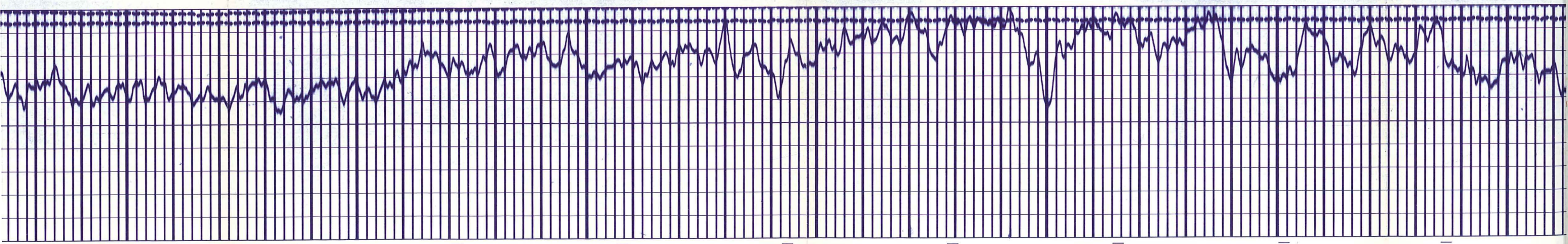


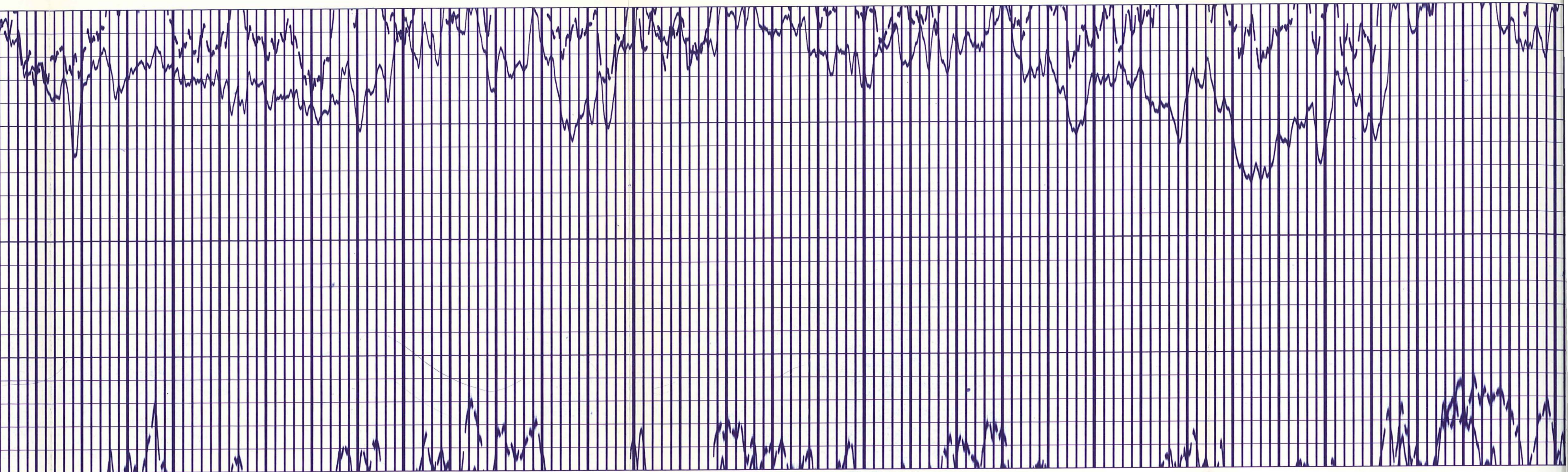


3100

3200

3300

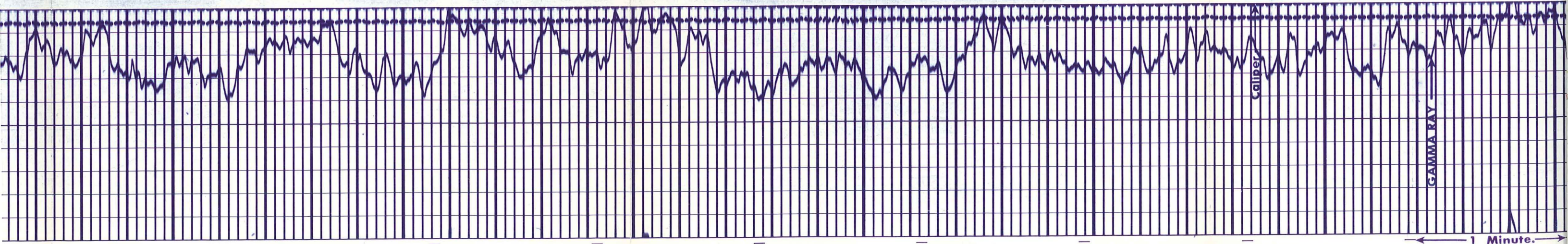




3400

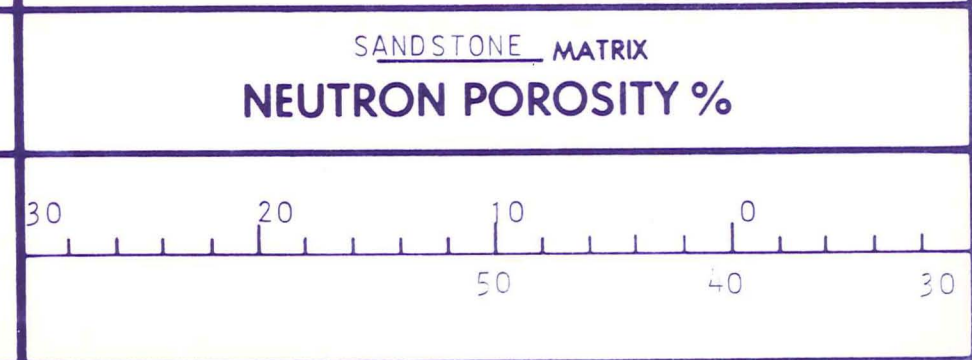
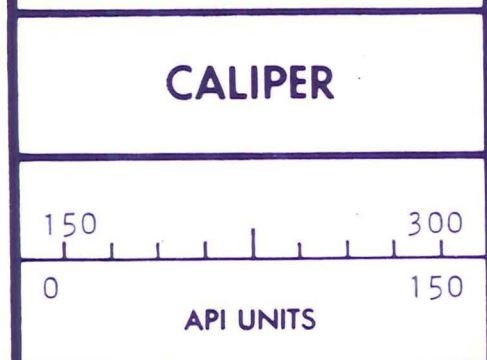
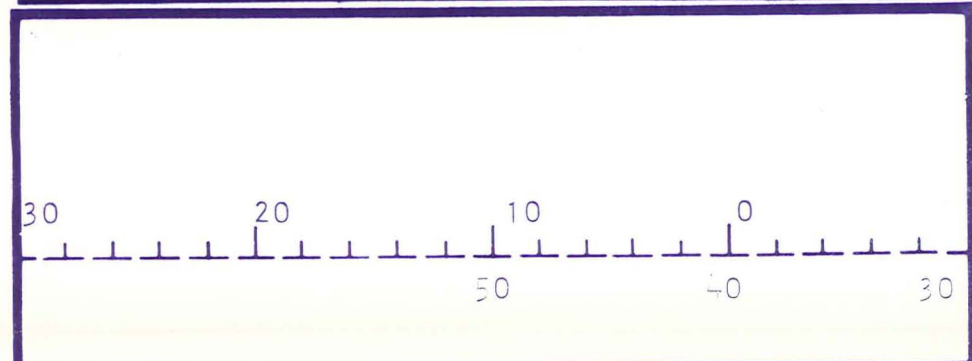
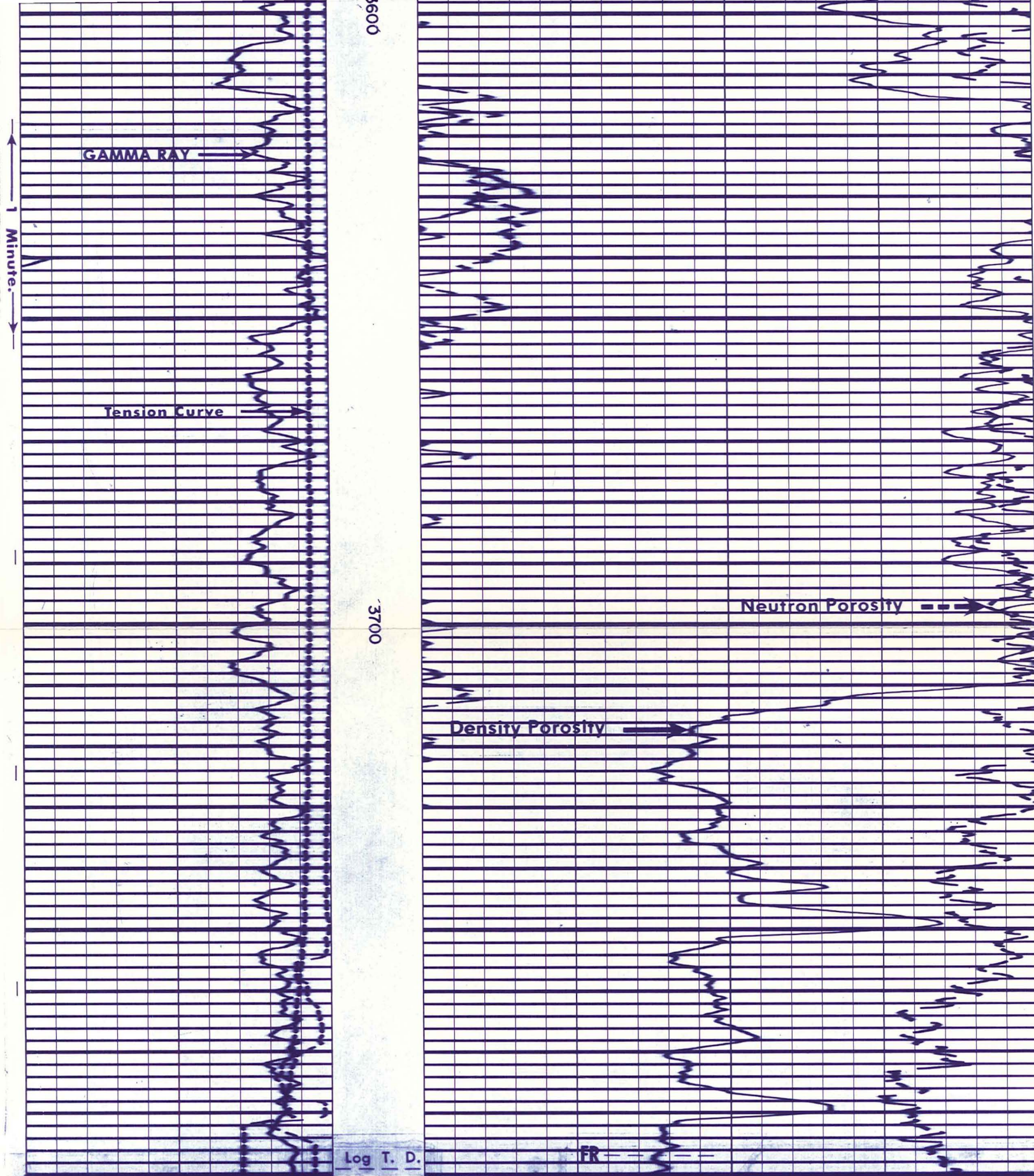
3500

3600



GAMMA RAY

1 Minute



GAMMA RAY

DEPTH

ρ_{ma} 2.68 ρ_f 1.00

DENSITY - POROSITY %

Company	E. G. & G. IDAHO INC.	Drillers T.D.	3889
Well	RRGI-6	Log F.R.	3787
Field	RAFT RIVER GEOTHERMAL	Log T.D.	3789
County	CASSIA	Elevations:	
State	IDAHO	K.B.	4876
		D.F.	4875
		G.L.	4800

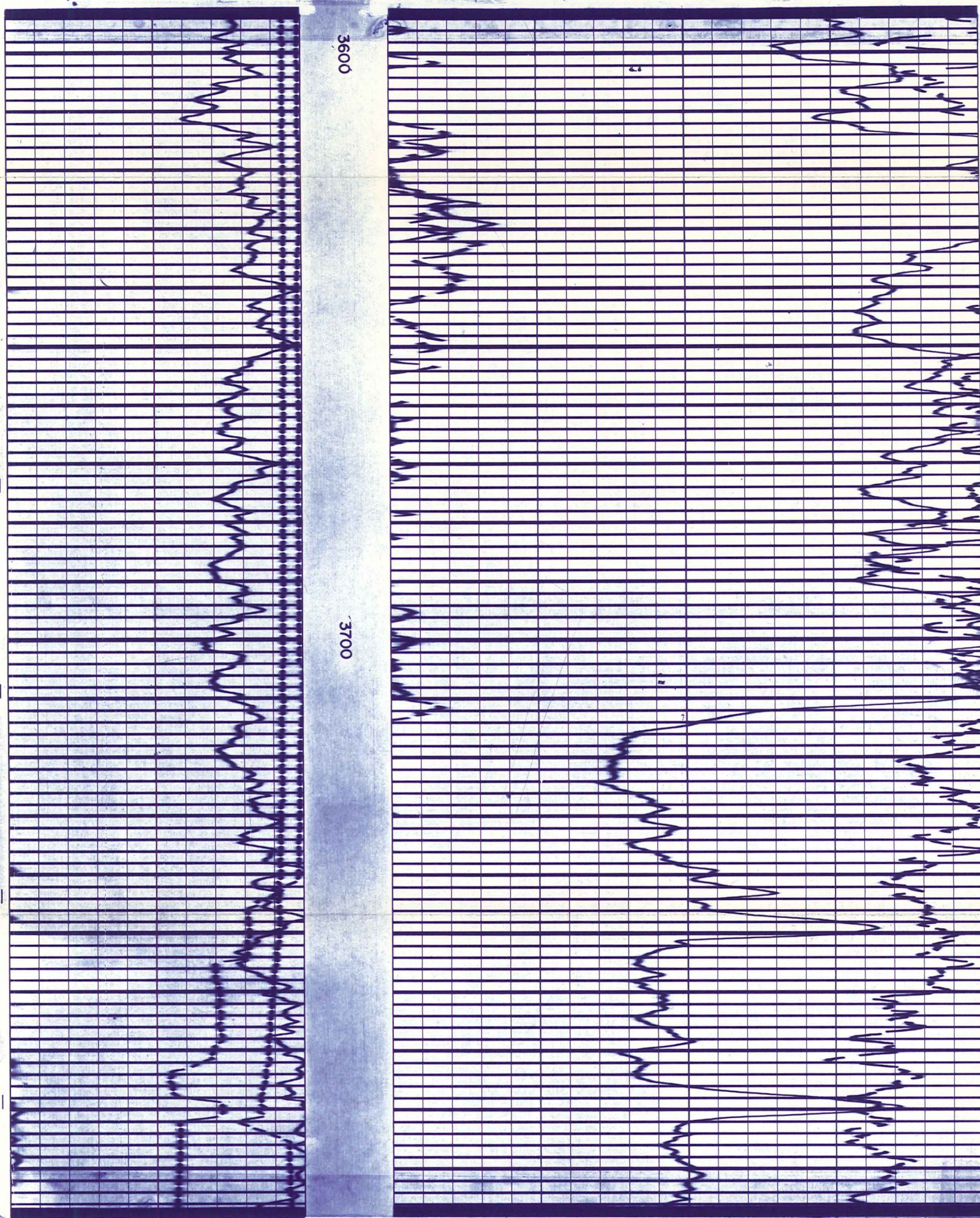
REPEAT SECTION



Company E. G. & G. IDAHO INC.
Well RRG1-6
Field RAFT RIVER GEOTHERMAL
County CASSIA
State IDAHO

Drillers T.D. 3889
Log F.R. 3787
Log T.D. 3789
Elevations:
K.B. 4876 **D.F.** 4875 **G.L.** 4800

REPEAT SECTION

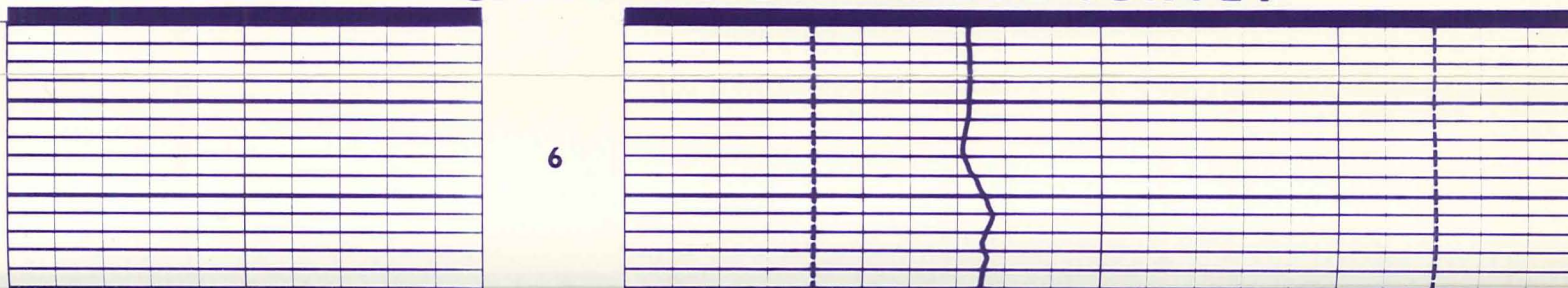


CALIBRATION

COMPENSATED NEUTRON

1. MECHANICAL ZERO
2. PANEL—LOW
3. PANEL—HIGH
4. COUNT RATE METER
5. COMPUTER CHECK
6. COMPENSATED NEUTRON

CALIBRATION BEFORE SURVEY



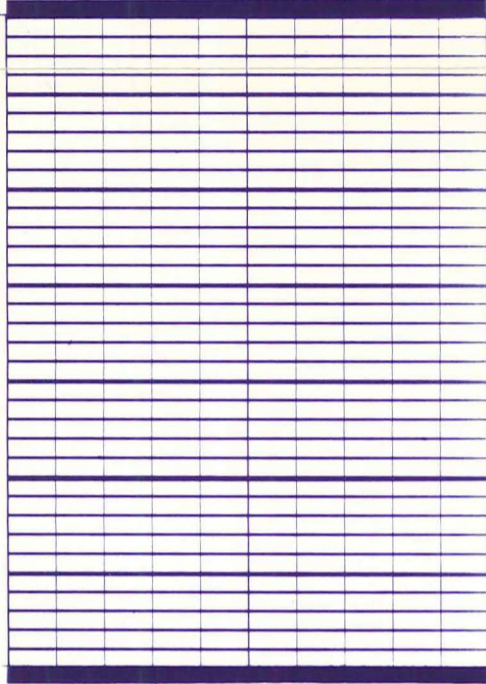
CALIBRATION

COMPENSATED NEUTRON

925273 ON LOG

1. MECHANICAL ZERO
2. PANEL—LOW
3. PANEL—HIGH
4. COUNT RATE METER
5. COMPUTER CHECK
6. COMPENSATED NEUTRON

CALIBRATION BEFORE SURVEY

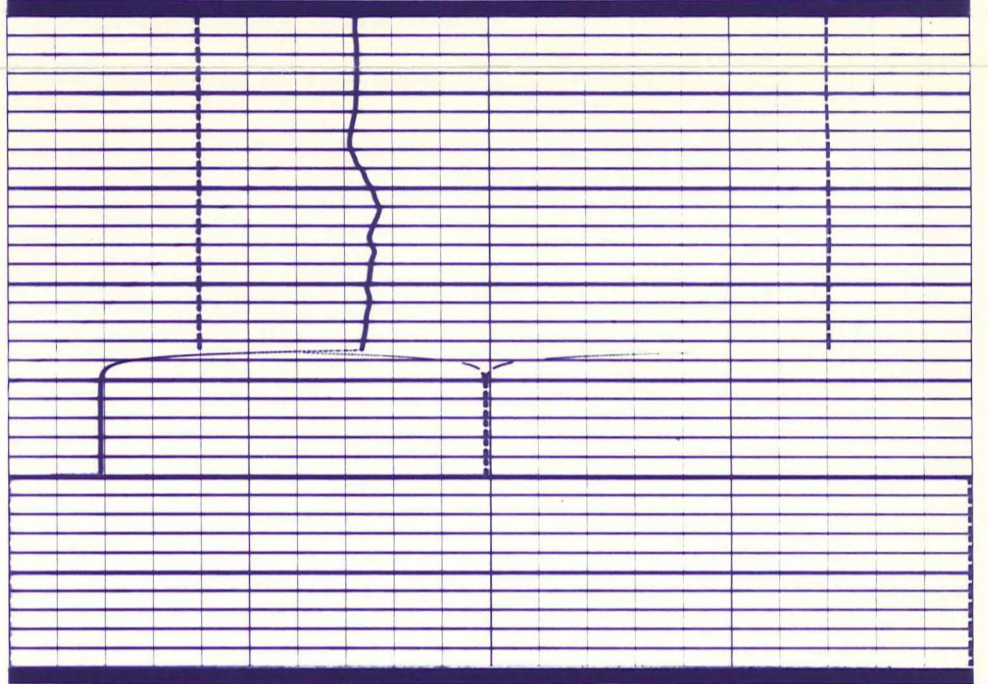


6

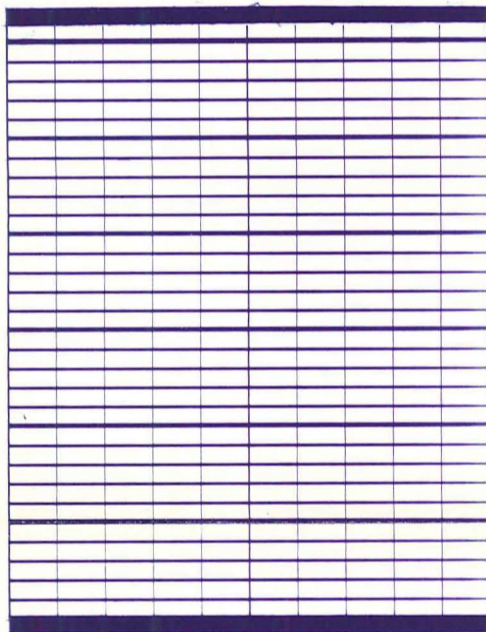
3

2

1



CALIBRATION AFTER SURVEY



6

3

2

1

