

GL02649

Schlumberger

FULL BORE SPINNER FLOWMETER

COMPANY E G & G IDAHO, INC.

WELL RRGP # 4-B

FIELD RAFT RIVER

COUNTY CASSIA STATE IDAHO

LOCATION
 API SERIAL NO. SEC. TWP RANGE
 23 15S 26E

Other Services:
 HRT-FIL/GR
 DIL/GR
 BHC/GR/TTI
 FDC/CNL/GR

Permanent Datum: GROUND LEVEL; Elev. 4840
 Log Measured From KB 16 Ft. Above Perm. Datum
 Drilling Measured From KB

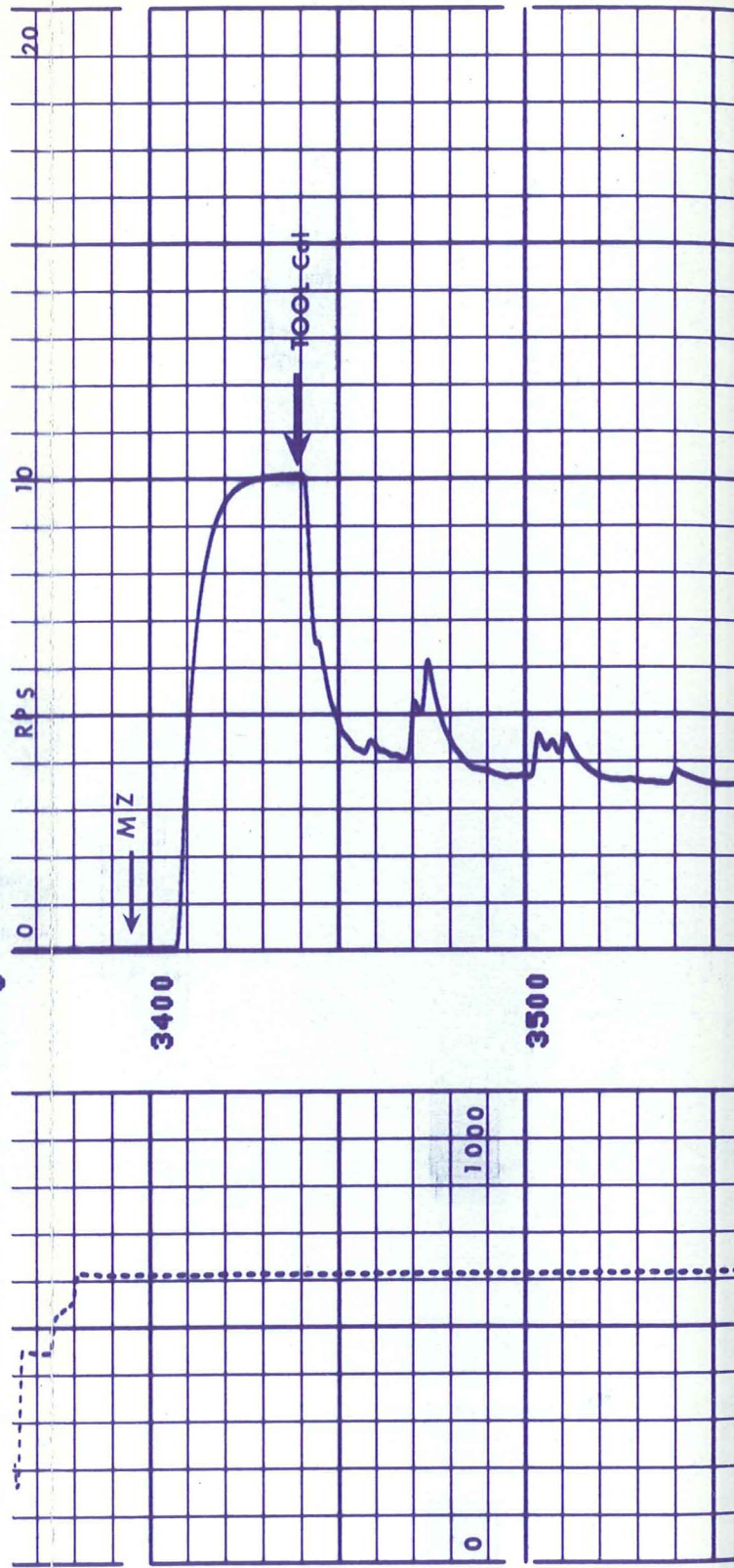
Elev.: K.B. 4856
 D.F.
 G.L. 4840

Date	<u>11/13/78</u>		
Run No.	<u>ONE</u>		
Depth-Driller	<u>5115</u>		
Depth-Logger (Schl.)	<u>5126</u>		
Btm. Log Interval	<u>4200</u>		
Top Log Interval	<u>3376</u>		
Casing-Driller	<u>95/8 @ 3457</u>	<u>@</u>	<u>@</u>
Casing-Logger	<u>3470</u>		
Bit Size	<u>8.75</u>		
Type Fluid in Hole	<u>FORMATION WATER (FLOWING)</u>		
Dens.	Visc.		
pH	Fluid Loss	<u>7.2</u> ml	<u> </u> ml
Source of Sample	<u>FLOWLINE</u>		
Rm @ Meas. Temp.	<u>2.38 @ 66 °F</u>	<u>@</u> °F	<u>@</u> °F
Rmf @ Meas. Temp.	<u>2.05 @ 42 °F</u>	<u>@</u> °F	<u>@</u> °F
Rmc @ Meas. Temp.	<u>@ °F</u>	<u>@</u> °F	<u>@</u> °F
Source: Rmf	<u>M</u>	<u>N/A</u>	
Rm @ BHT	<u>.62 @ 250 °F</u>	<u>@</u> °F	<u>@</u> °F
TIME	Circulation Stopped	<u>11/12@2000</u>	
	Logger on Bottom	<u>11/13@0600</u>	
Max. Rec. Temp.	<u>268 °F</u>	<u>°F</u>	<u>°F</u>
Equip. Location	<u>8060 EVSTN</u>		
Recorded By	<u>ROONEY/CHRISTENSEN</u>		
Witnessed By Mr.	<u>STEADHAM/NELSON</u>		

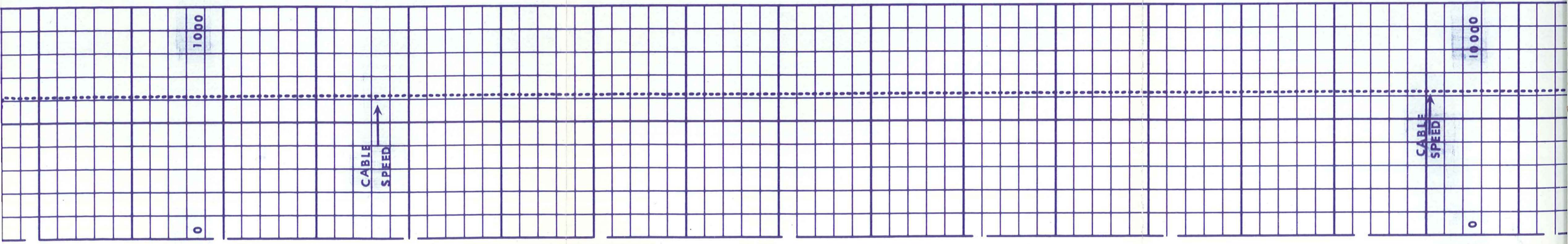
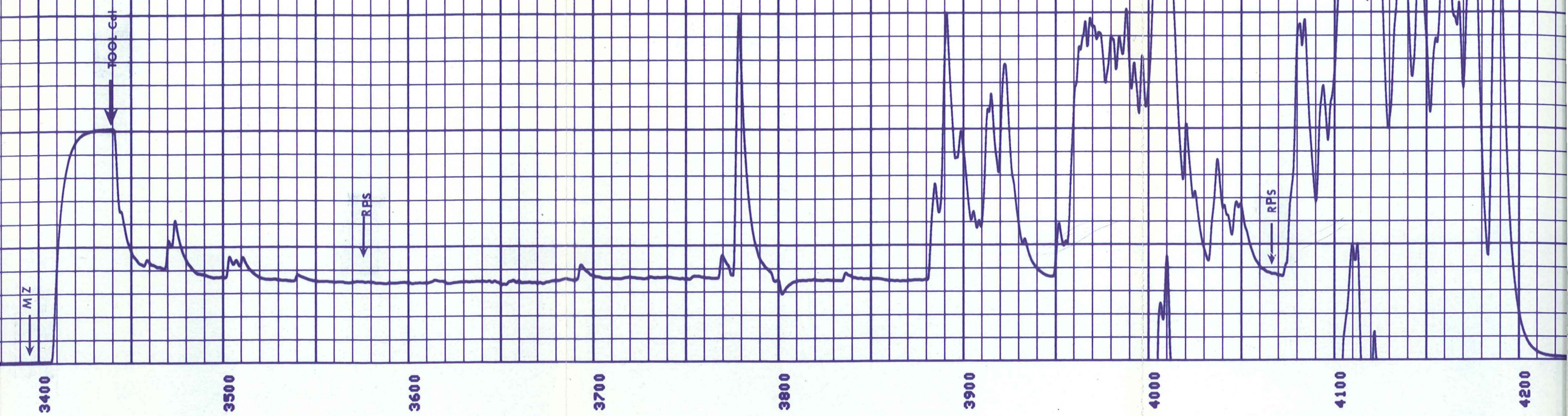
The well name, location and borehole reference data were furnished by the customer.

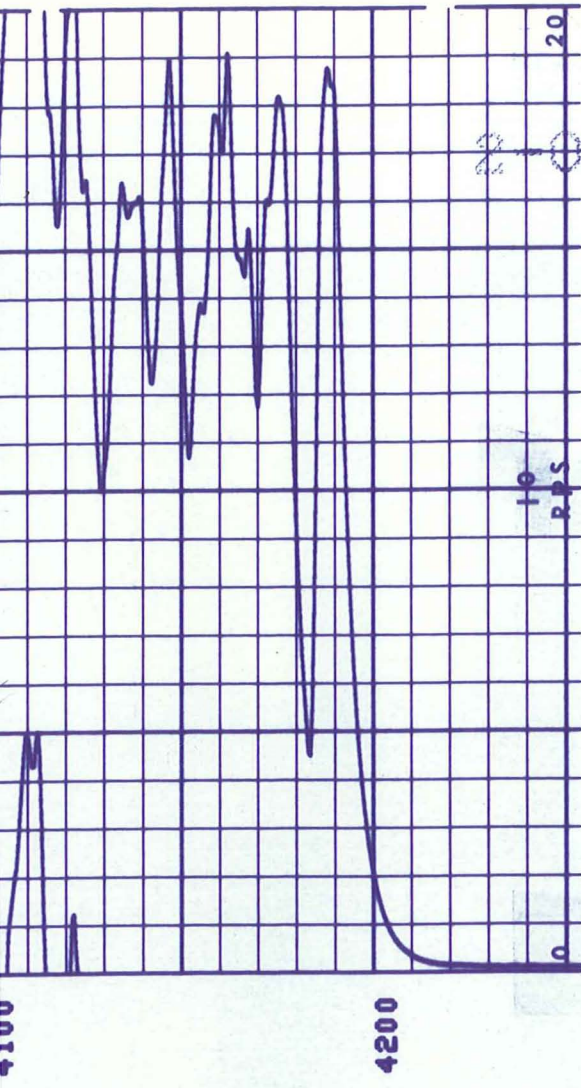
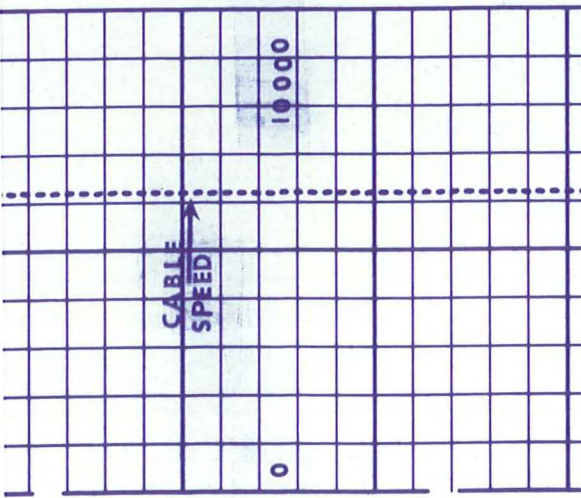
SCALE CHANGES		Type Log	Depth	Scale Up Hole	Scale Down Hole
REMARKS: TOOL OUT DUE TO BOREHOLE CONDITIONS (I.E. TEMP.) TOOL LOGGED GOING DOWN CUS - TOMER CANCELLED THE REMAINDER OF SERVICE DUR TO TIME AND AVAILABILITY. 2-15-79 01096					
EQUIPMENT DATA					
Run No.	<u>ONE</u>				
Service Order No.	<u>10964</u>				
API Serial No.	<u>FULL</u>				
Fluid Level					
CALIBRATION DATA					
Speed - F.P.M.	<u>100</u>				
BKG. CPS					
Source CPS					
Tc					
GR					

All interpretations are opinions based on inferences from electrical or other measurements and we cannot, and do not guarantee the accuracy or correctness of any interpretations, and we shall not, except in the case of gross or willful negligence on our part, be liable or responsible for any loss, costs, damages or expenses incurred or sustained by anyone resulting from any interpretation made by any of our officers, agents or employees. These interpretations are also subject to Clause 4 of our General Terms and Conditions as set out in our current Price Schedule.



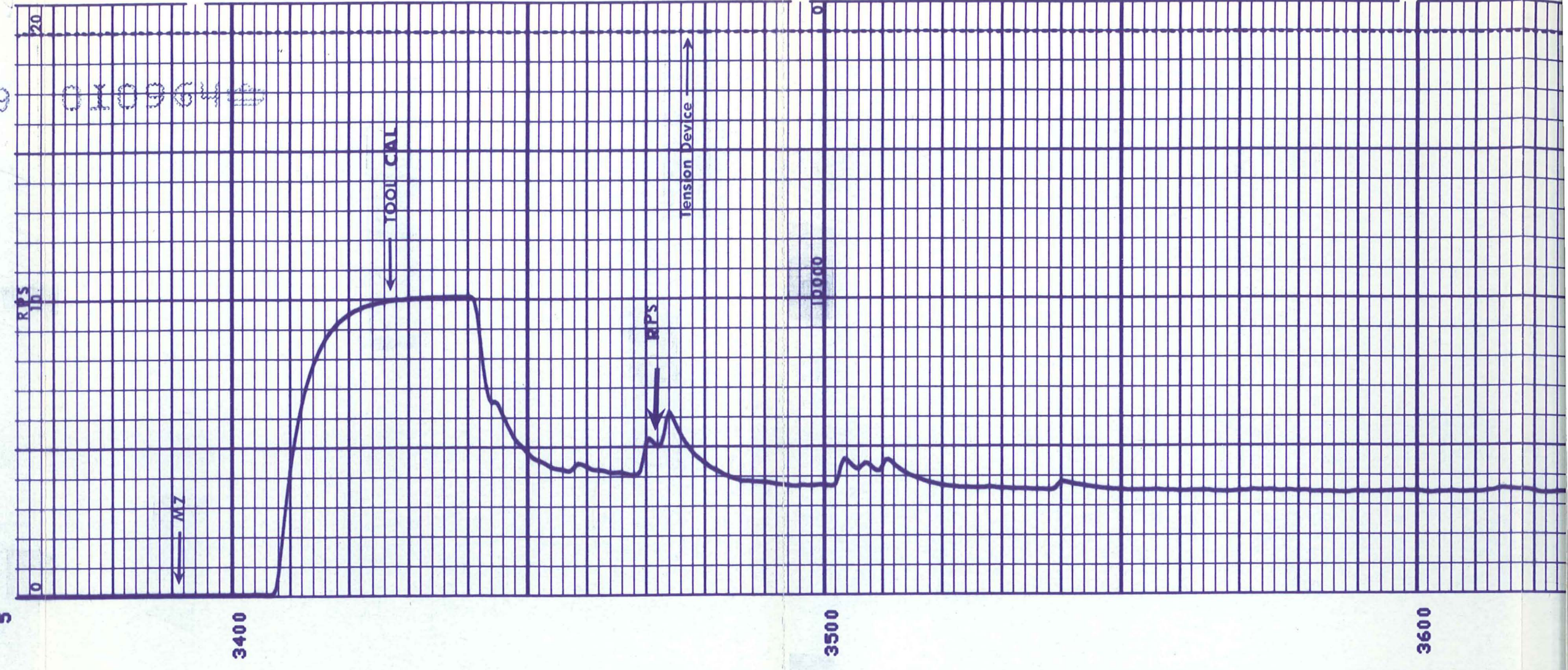
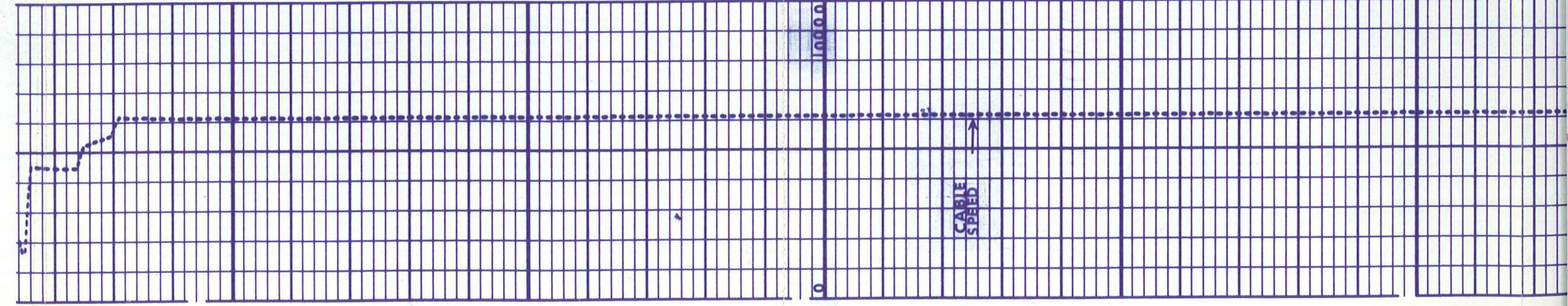
2-05-79 010964





2-05-79 0109640

55r's



2-05-79 010964a

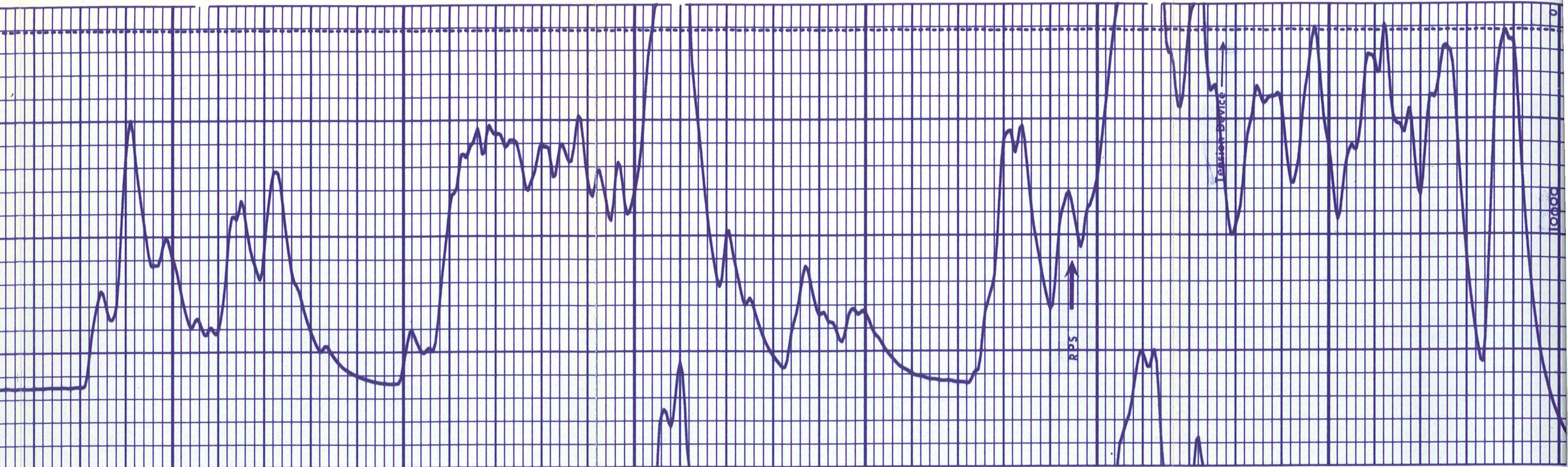
3600

3700

3800

3900



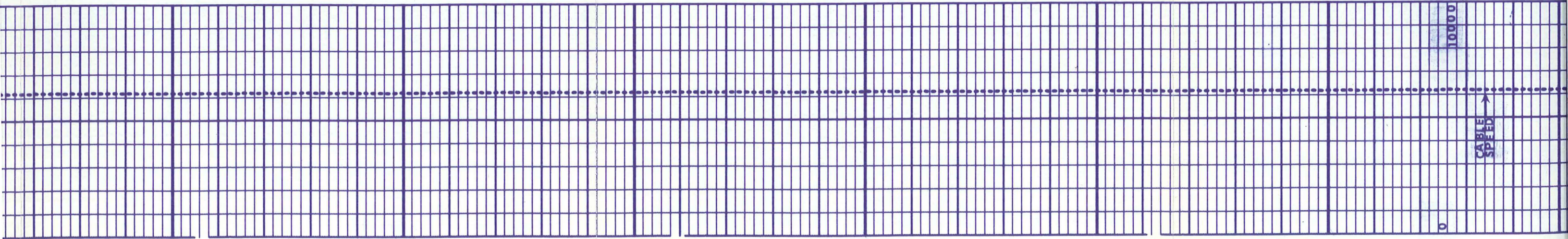


3900

4000

4100

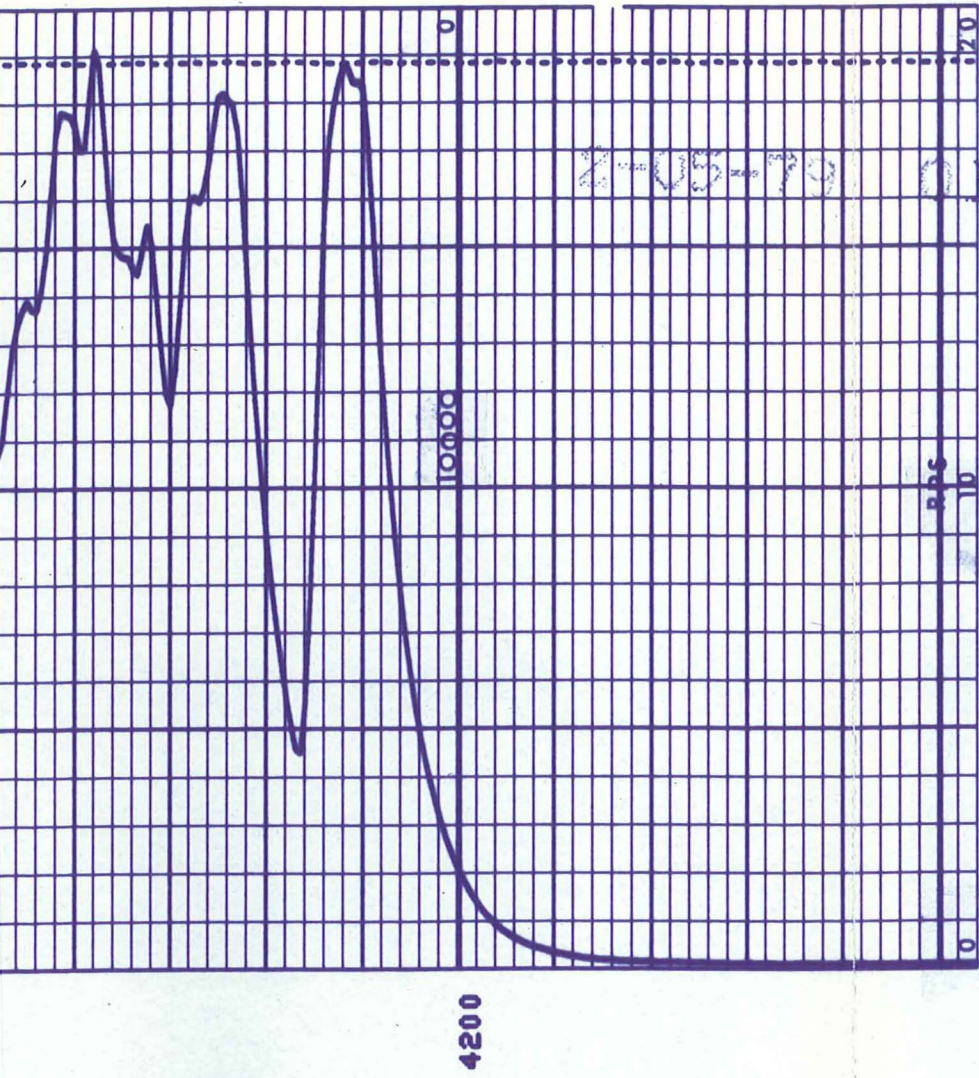
4200



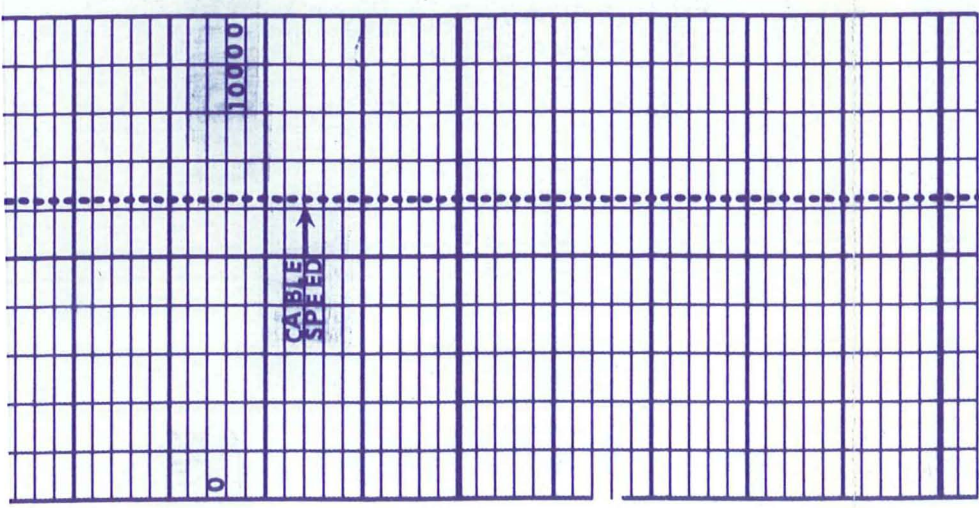
10000

0

CABLE SPEED



2-05-79 010964



NSR



FILE_CAB_15_DRAWER_2