



DUAL INDUCTION-SFL
WITH LINEAR CORRELATION LOG

GL02652

COUNTY _____
 FIELD _____
 LOCATION _____
 WELL _____
 COMPANY _____

COMPANY E G & G IDAHO, INC.
 WELL RRGP # 4B
 FIELD RAFT RIVER
 COUNTY CASSIA STATE IDAHO

LOCATION
 API SERIAL NO. 23 SEC. 15S TWP. 26E RANGE
 Other Services:
 HRT
 BHC-GR
 FDC-CNL-GR
 FBS HDT

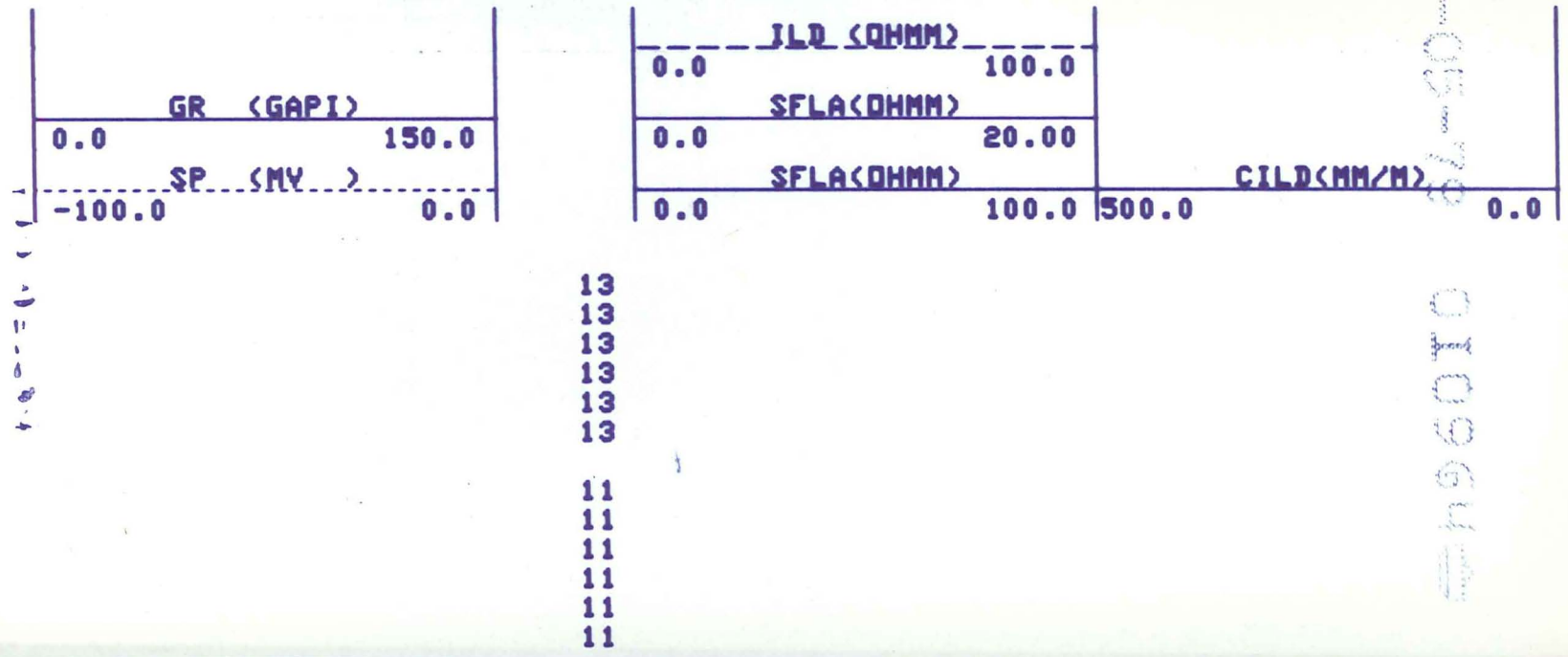
Permanent Datum: GL Elev.: 4840
 Log Measured From: KB 16 Ft. Above Perm. Datum
 Drilling Measured From: KB Elev.: 4856
 D.F.: 4855
 G.L.: 4840

Date	11/13/78		
Run No.	ONE		
Depth-Driller	5115		
Depth-Logger	5126		
Bitm. Log Interval	5120		
Top Log Interval	3471		
Casing-Driller	95/8 @ 3457	@	@
Casing-Logger	3471		
Bit Size	8.75		
Type Fluid in Hole	FORMATION WATER (FLOWING)		
Dens. Visc.	N/A N/A		
pH Fluid Loss	7.2 N/A ml		
Source of Sample	FLOWLINE		
Rm @ Meas. Temp.	2.38 @ 66 °F	@	@
Rmf @ Meas. Temp.	2.05 @ 42 °F	@	@
Rmc @ Meas. Temp.	@ @ °F	@	@
Source: Rmf Rmc	M N/A		
Rm @ BHT	62 @ 250 °F	@	@
Circulation Stopped	N/A		
Logger on Bottom	1630		
Max. Rec. Temp.	252 °F		
Equip. Location	8060 EVSTIN		
Recorded By	ROONEY/CHRISTENSEN		
Witnessed By	STEADHAM/NEILSON		

FOLD HERE The well name, location and borehole reference data were furnished by the customer.

Run No.	ONE	SCALE CHANGES		
Service Order No.	10964	Type Log	Depth	Scale Up Hole
Fluid Level	FULL			
Salinity ppm. cl	1740			
Speed F.P.M.	60			
EQUIPMENT DATA		REMARKS		
Panel No.	IEM BB-164			
Cart No.	DA-13			
Sonde No.	EA-23			
Mem. Panel No.	CSU			
G.R. Panel No.	NLM BB-178			
G.R. Cart No.	JAA-684			
Tape Recorder - (TTR)				
Depth Encoder - (DRE)				
Pressure Wheel - (CPW)				
Type Centralizers	2" RUBBER FIN			
Stand Off - Inches				
CALIBRATION DATA				
SBR	1.0			
Sonde Error - ILM	3.5			
Sonde Error - ILD	10.0			
G.R. BKG. - CPS.	57			
G.R. Source - CPS.	197			
S.E. Set In Hole - Depth				
S.E. Corr. - Hole Size				
LOGGING DATA				
SBR	1.0			
S.E. Log - ILM	3.5			
S.E. Log - ILD	10.0			
G.R. Scale per 100 Div.	150			
G.R. - T.C.	N/A			
G.R. Sens.	165			

All interpretations are opinions based on inferences from electrical or other measurements and we cannot, and do not guarantee the accuracy or correctness of any interpretations, and we shall not, except in the case of gross or willful negligence on our part, be liable or responsible for any loss, costs, damages or expenses incurred or sustained by anyone resulting from any interpretation made by any of our officers, agents or employees. These interpretations are also subject to Clause 4 of our General Terms and Conditions as set out in our current Price Schedule.



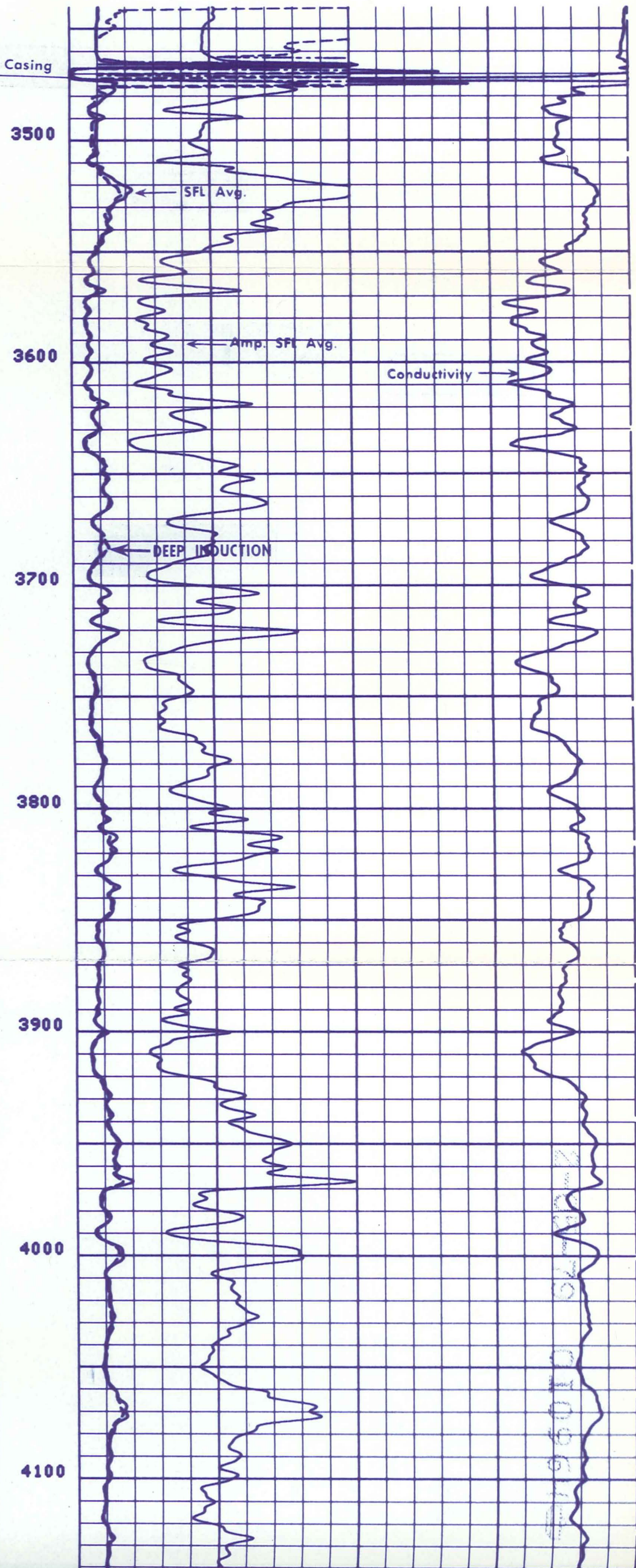
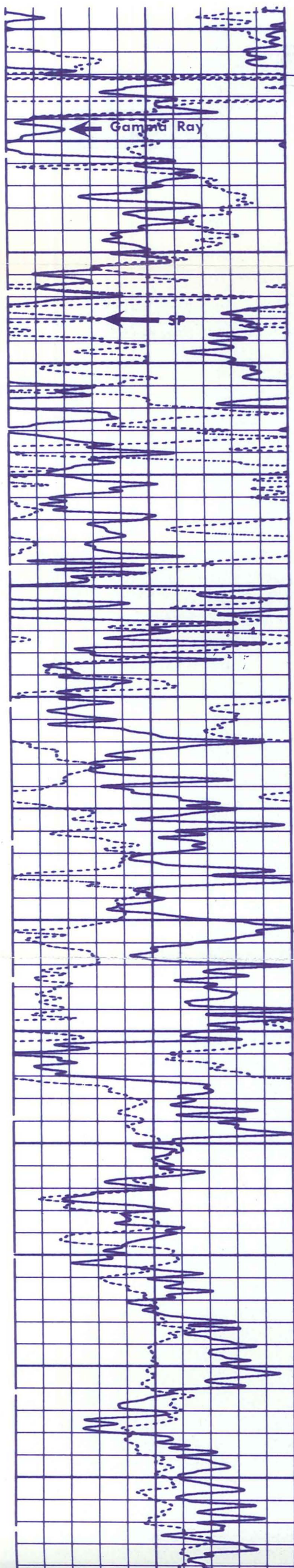
SP (MV) -100.0 0.0

SFLA(OHMM) 0.0 100.0 500.0 CILD(MM/M) 0.0

13
13
13
13
13

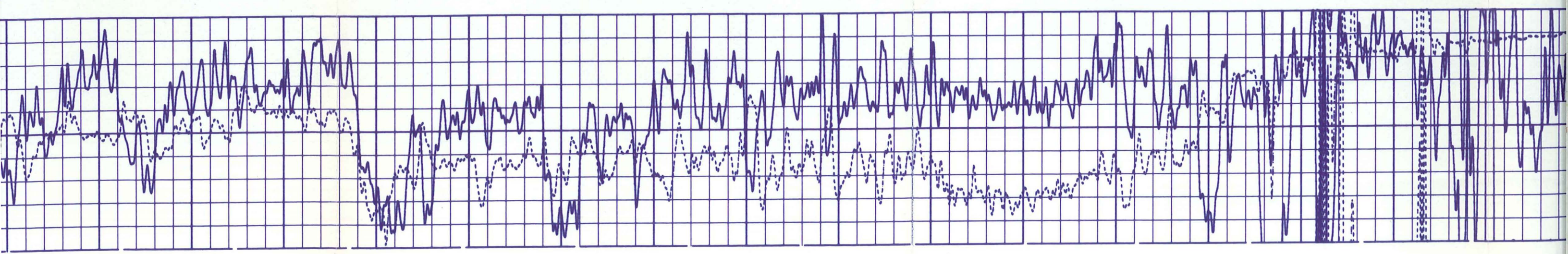
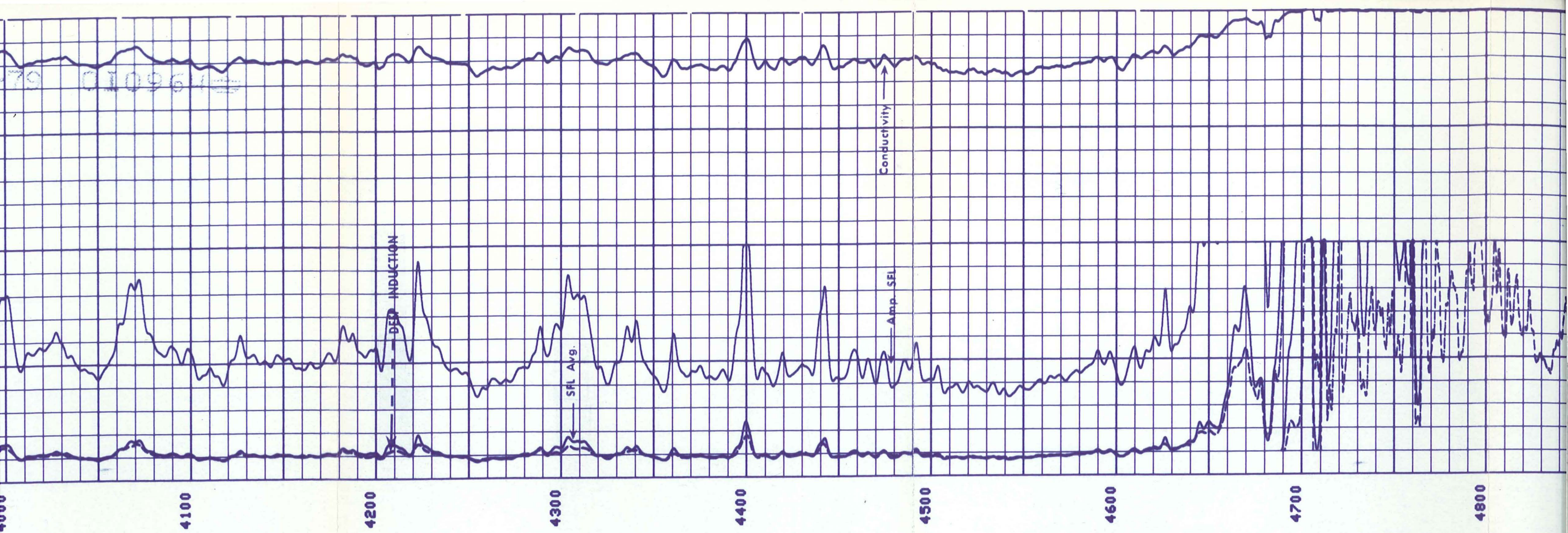
11
11
11
11
11
11

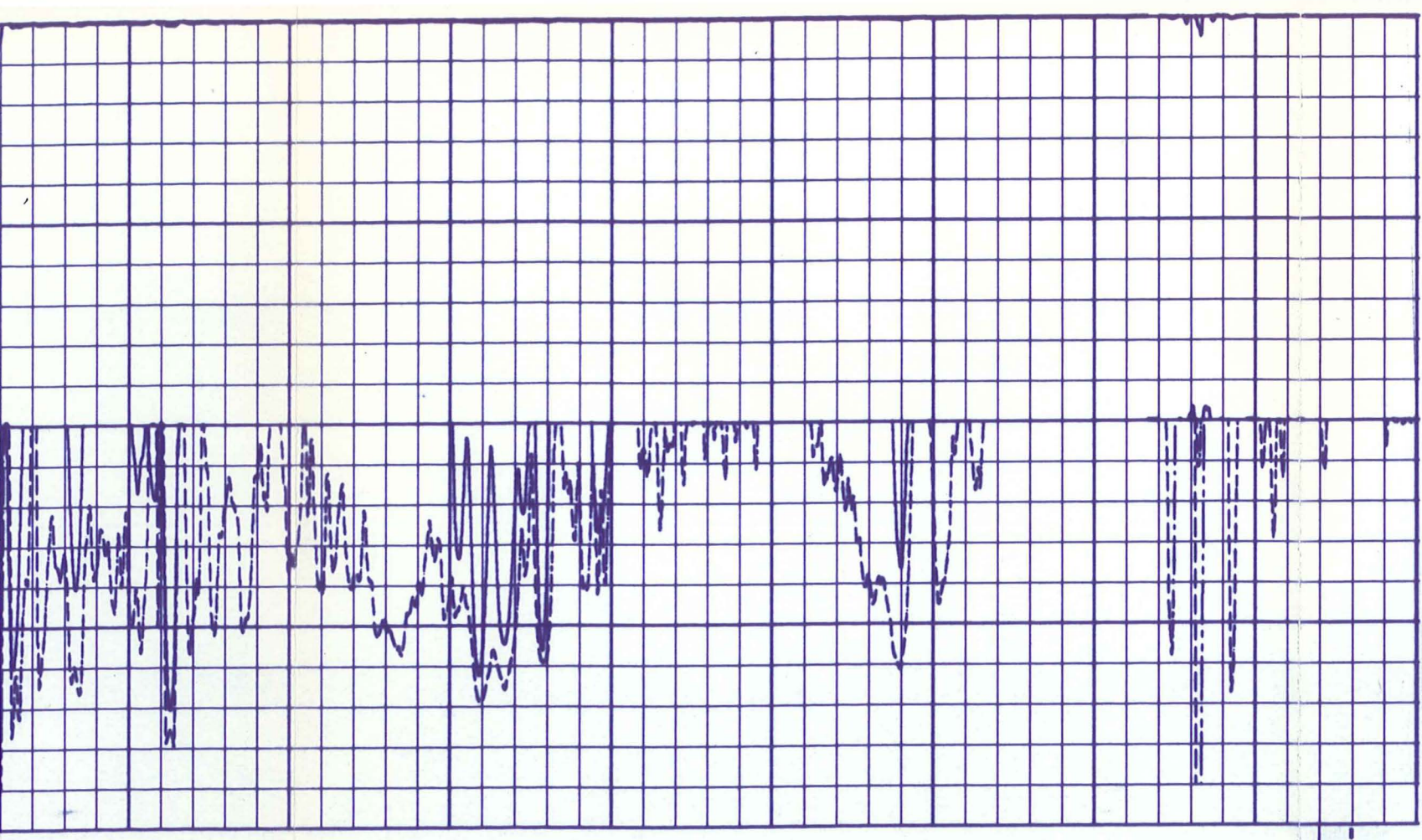
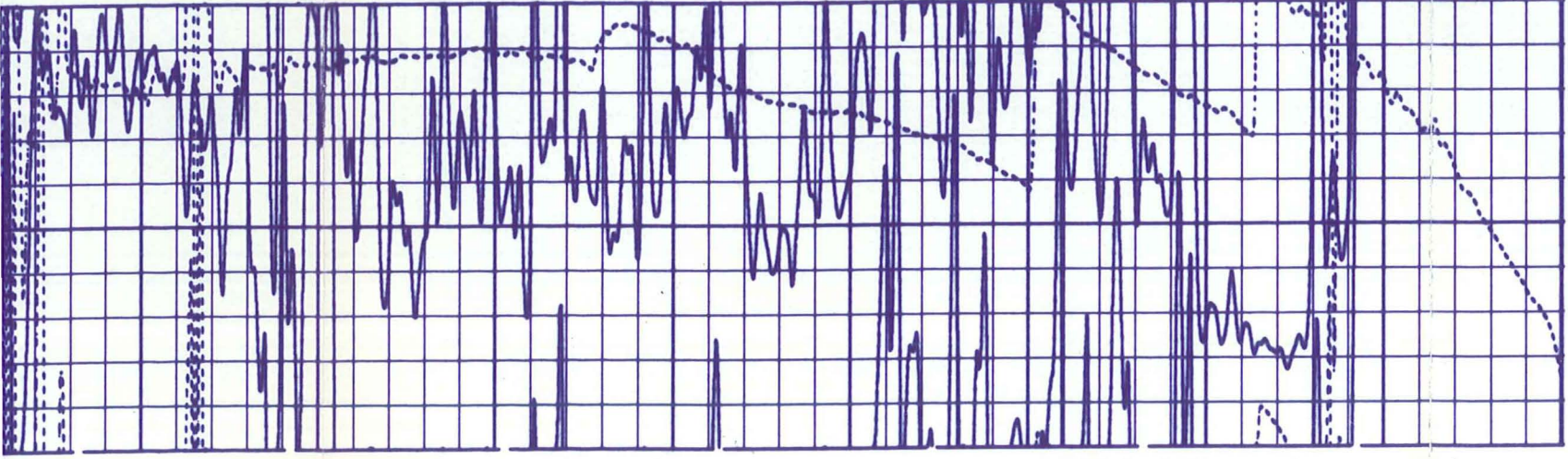
010964



Casing
3500
3600
3700
3800
3900
4000
4100

010964





4800

4900

5000

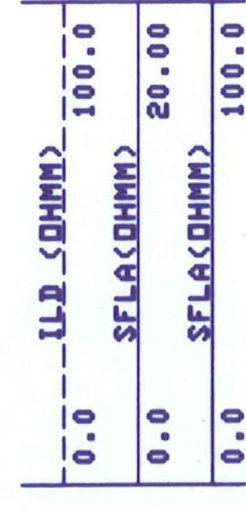
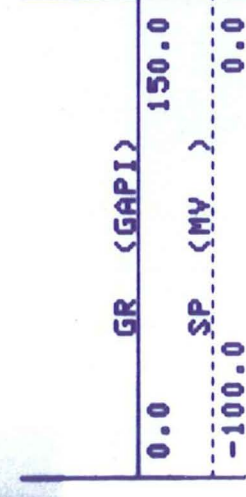
5100

FR

11
11
11
7
7
7

2-05-79

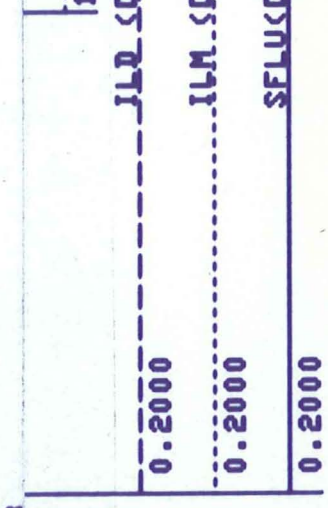
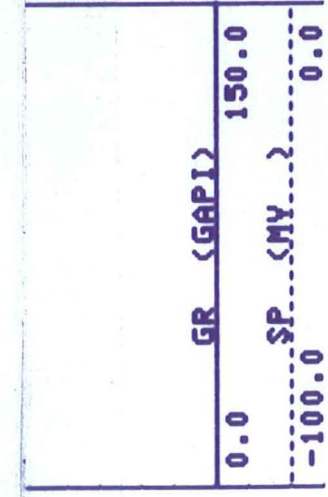
010



CILD (MM/M)

100.0 500.0 0.0

3
3
3



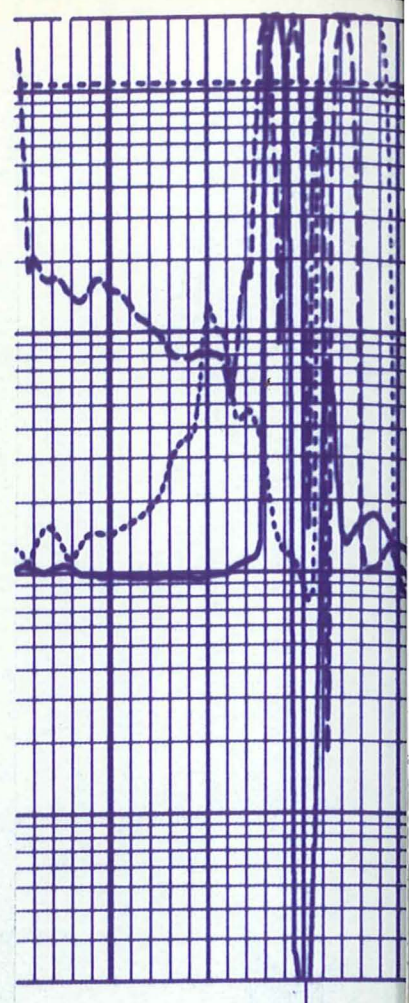
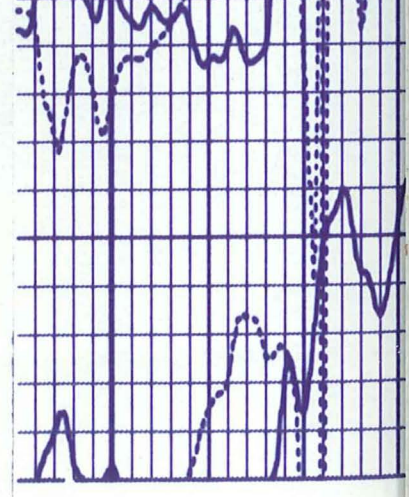
0.0

2000.

2000.

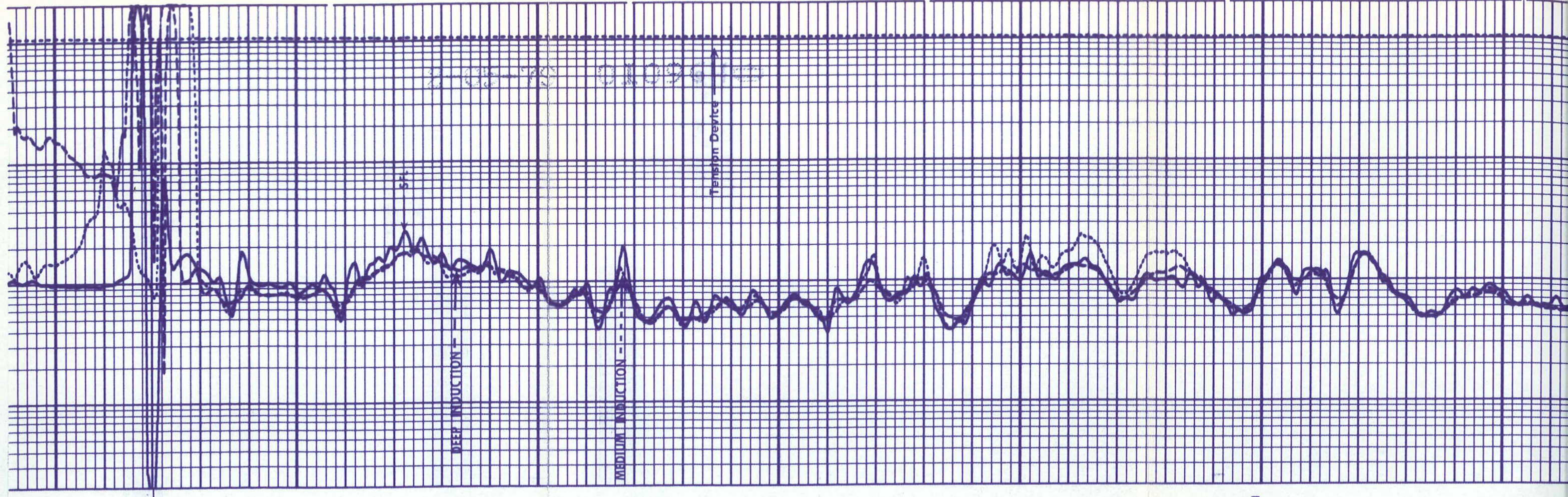
2000.

13
13
13
13
13
11
11



Casing

13
11
11

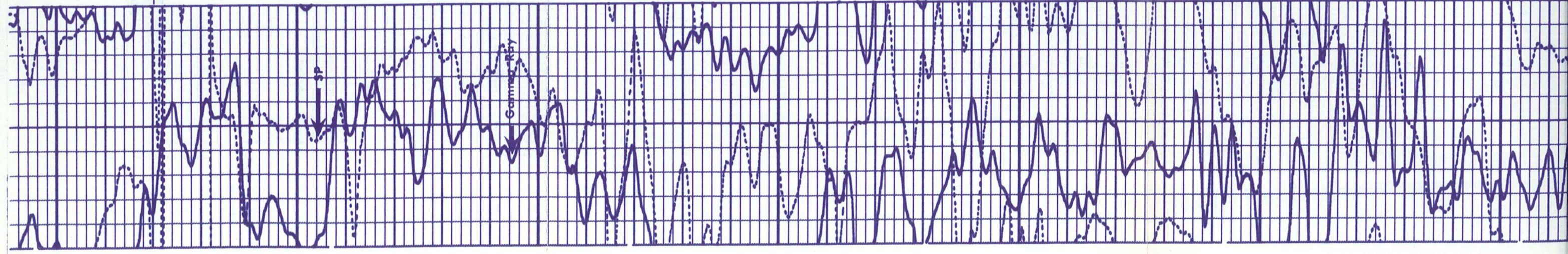


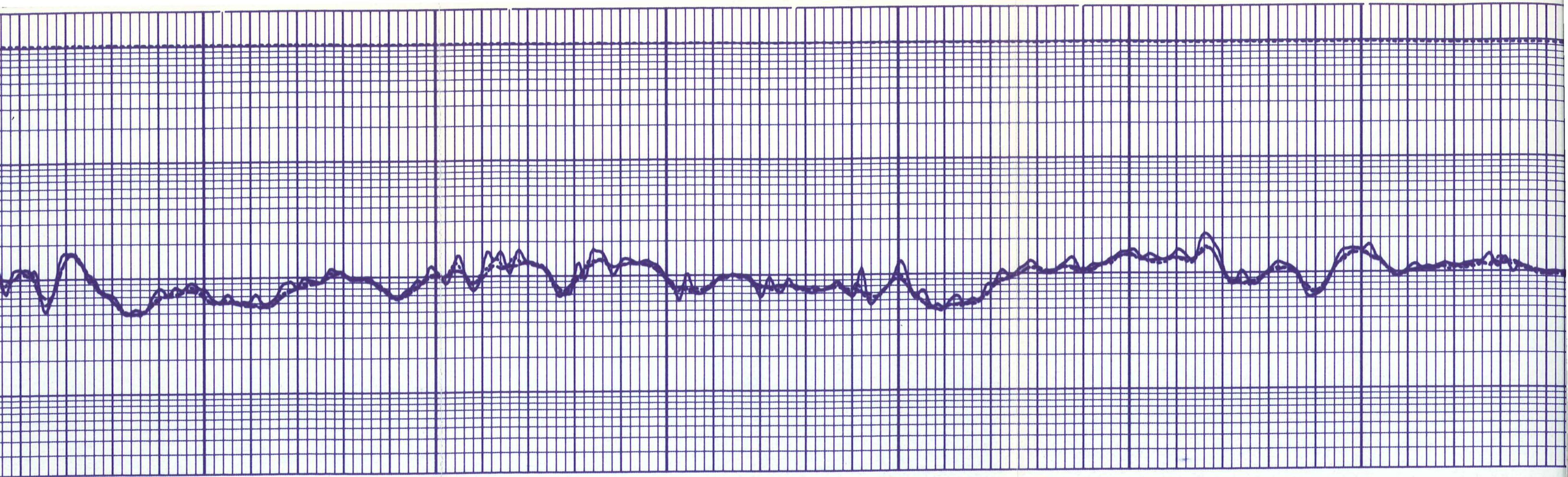
Casing

3500

3600

3700

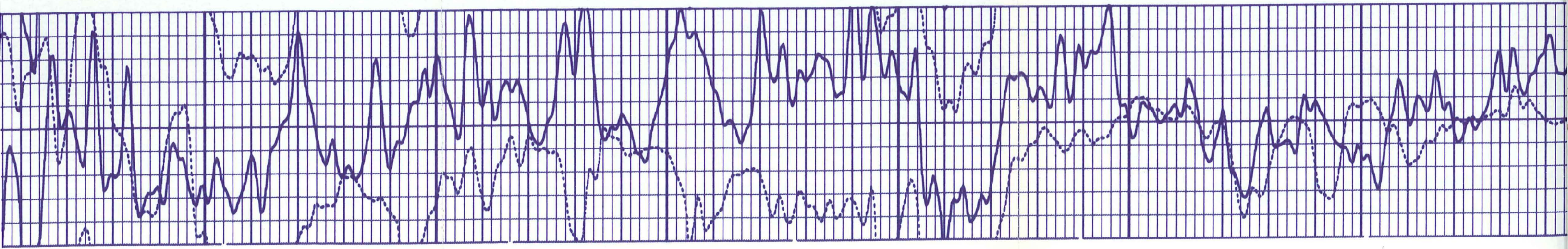


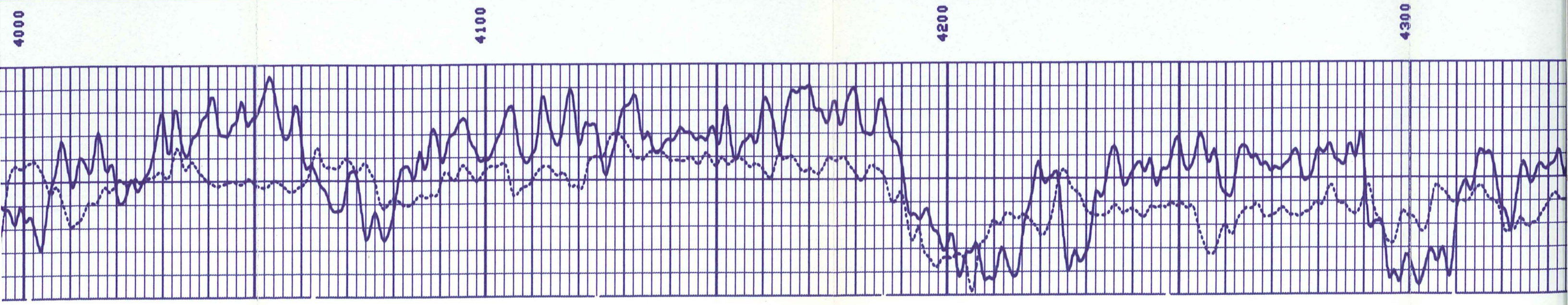
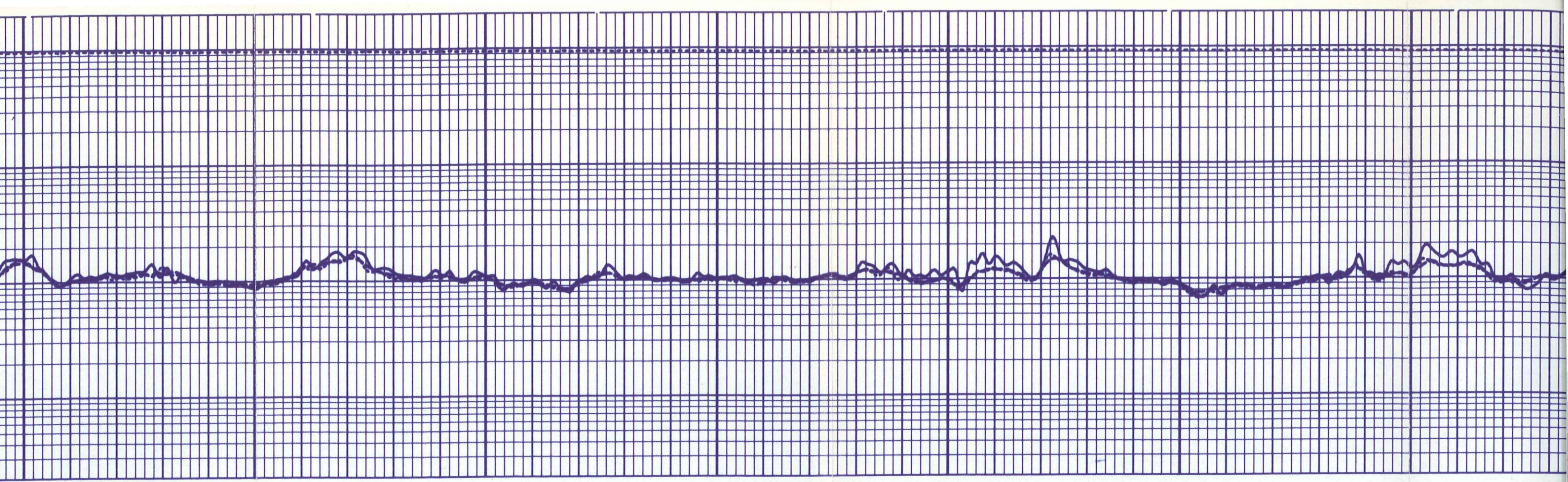


3800

3900

4000



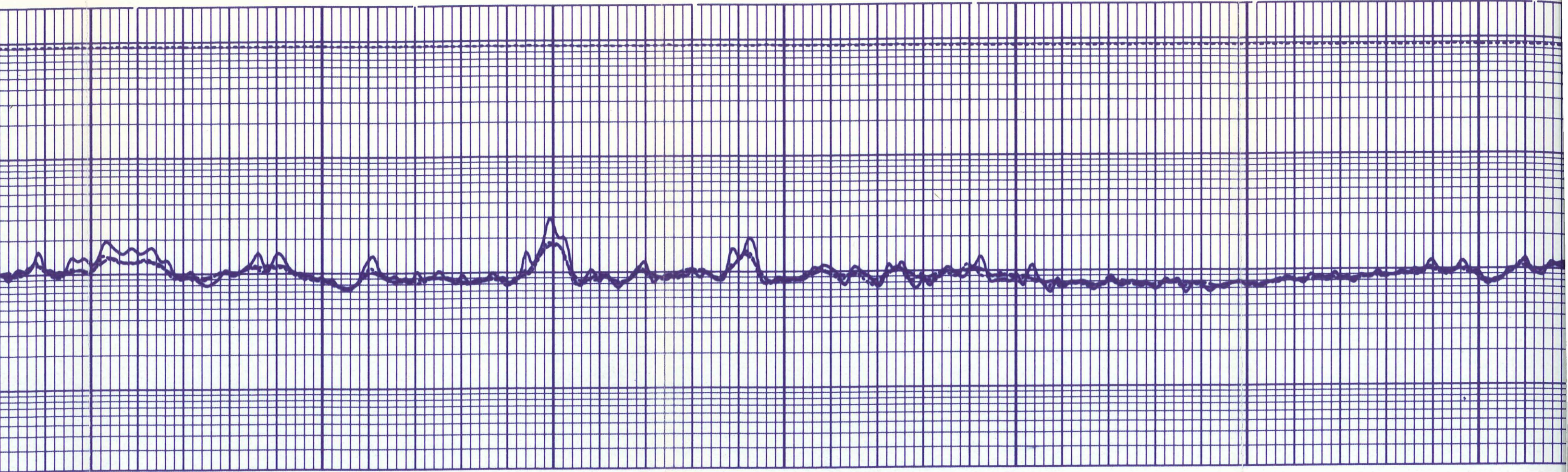


4000

4100

4200

4300

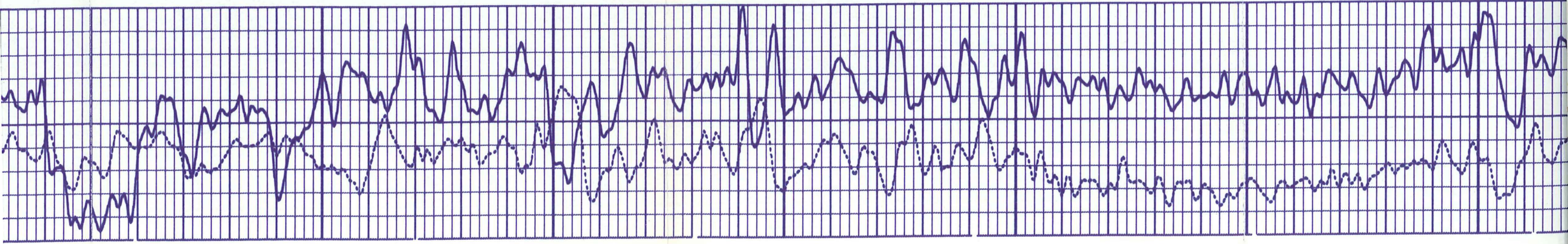


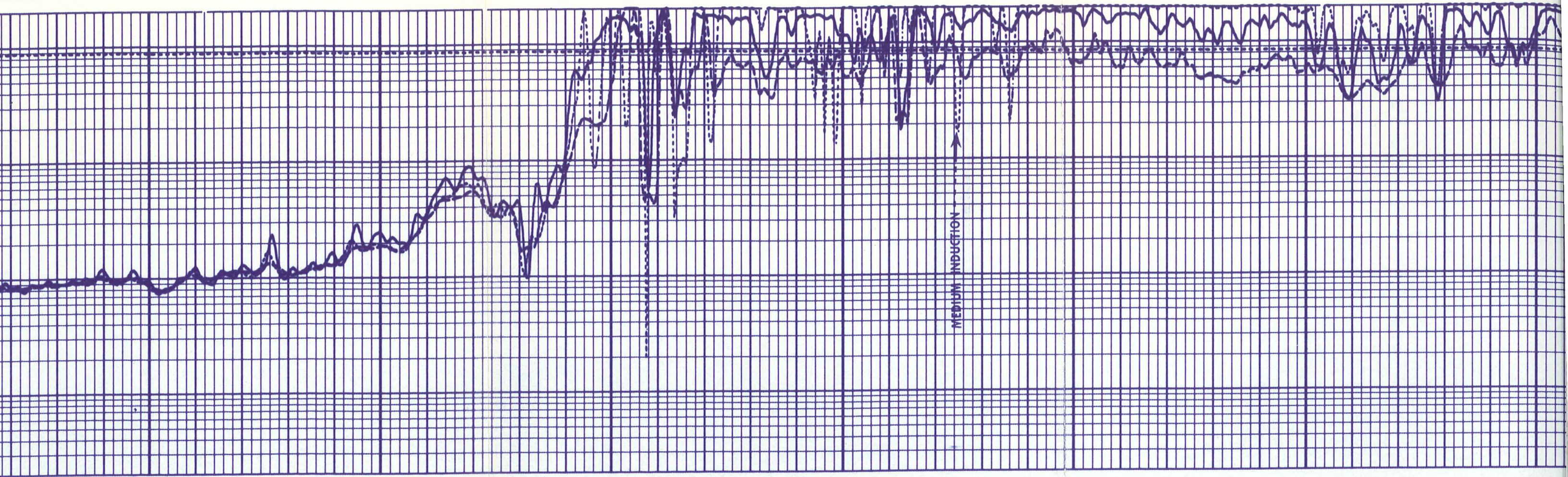
4300

4400

4500

4600



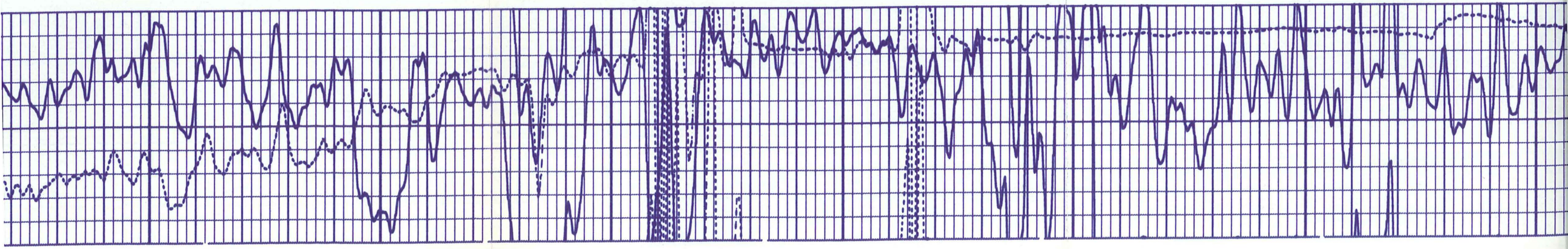


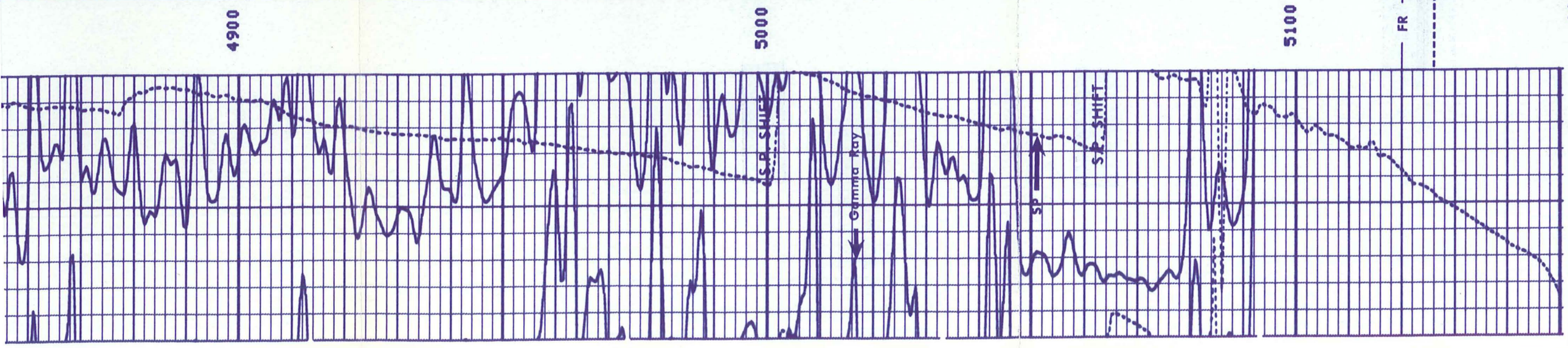
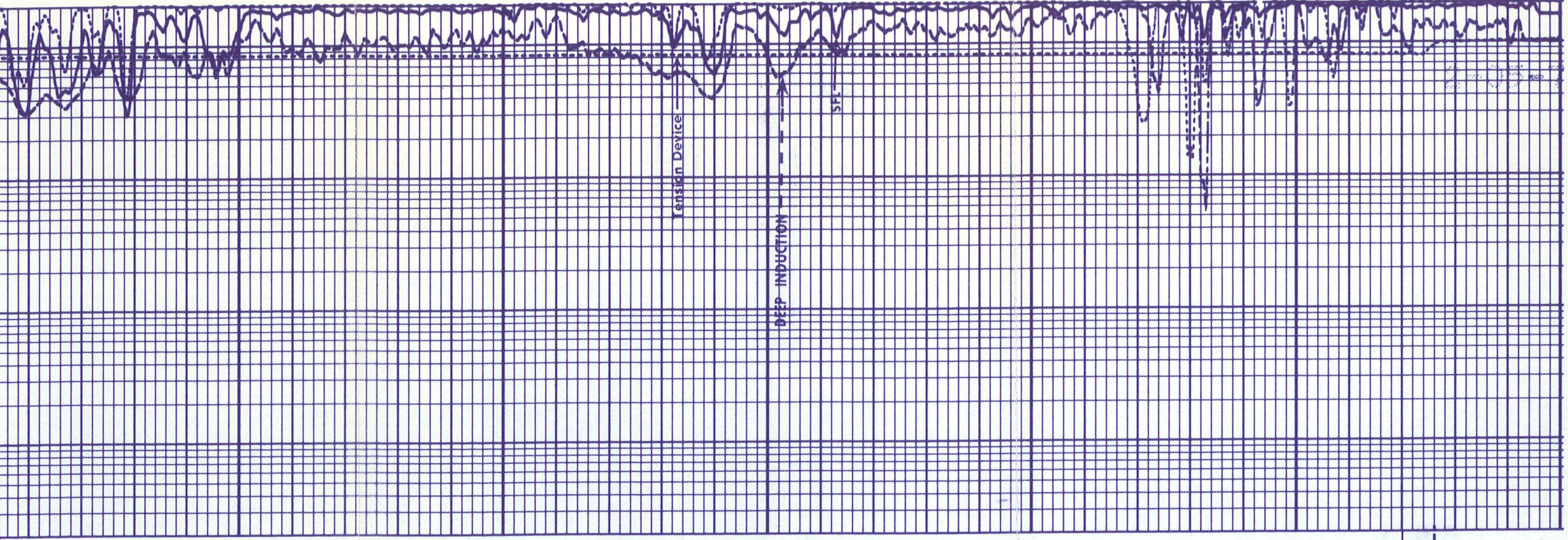
4600

4700

4800

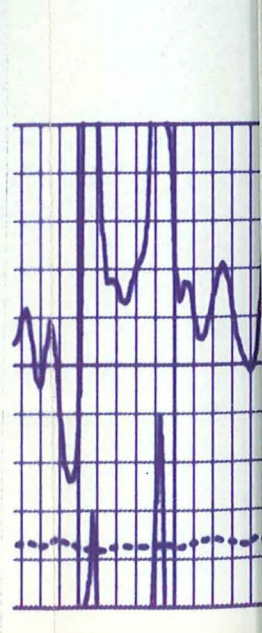
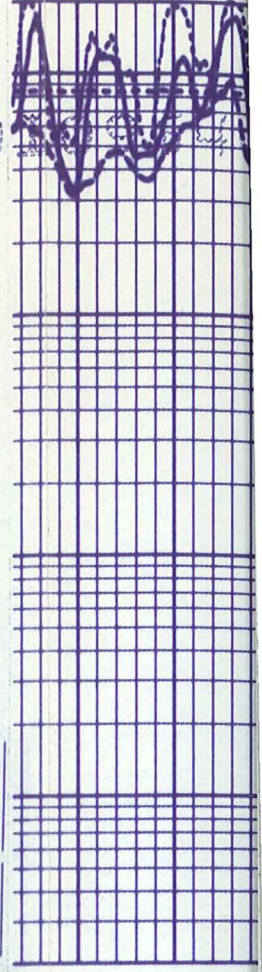
4900





11
11
10
10

REPEAT SECTION



11
11
10
10

REPEAT SECTION

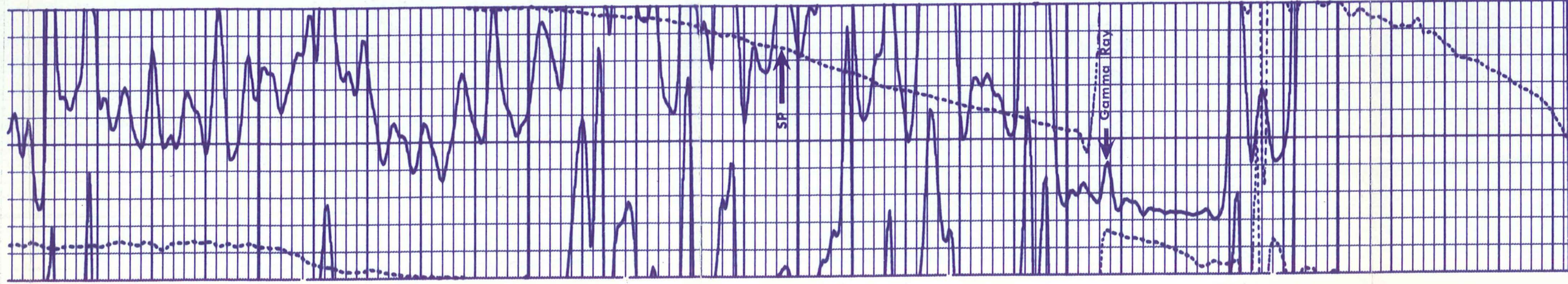
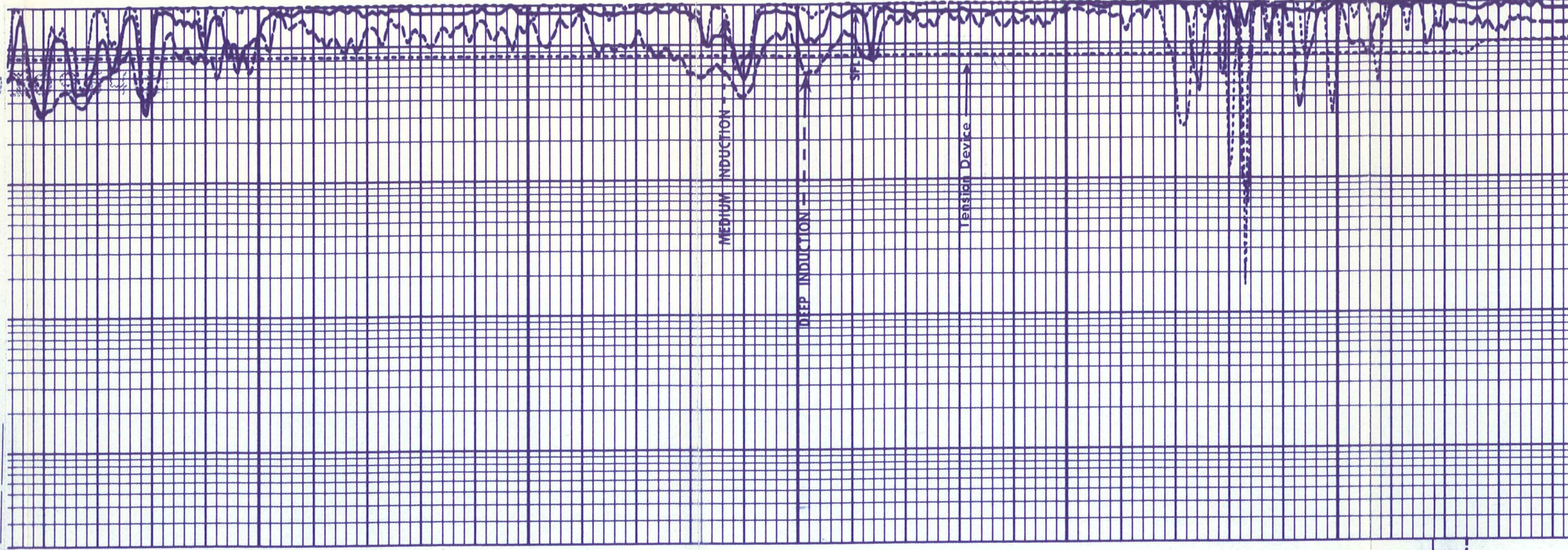
4900

5000

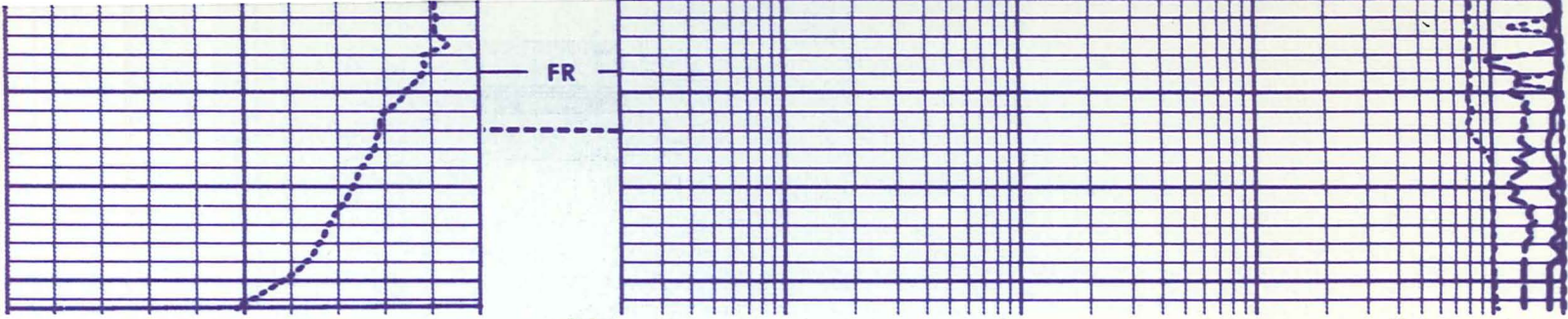
5100

FR

10
10
10



10000. TENS. LB. 0.0



10
10
10

GR (GAPI)		TENS(LB)	
0.0	150.0	10000.	0.0
SP (MV)		ILD (OHMM)	
-100.0	0.0	0.2000	2000.
		ILM (OHMM)	
		0.2000	2000.
		SFLU(OHMM)	
		0.2000	2000.

3
3
3

AFTER SURVEY TOOL CHECK SUMMARY

PERFORMED: 78/11/13
PROGRAM FILE: IS (VERSION 10.52 78/ 6/28)

DITD	TOOL CHECK			UNITS	
	BEFORE	ZERO AFTER	PLUS AFTER		
ILD	0.0	0.0	499.9	497.3	MM/M
ILM	0.0	-0.0	499.9	497.1	MM/M
SFL	0.0	0.0	499.9	498.9	MM/M

ILM SONDE ERROR CORRECTION : 3.5 MM/M
ILD SONDE ERROR CORRECTION : 10.5 MM/M

13
13
13
13
13
13
7

BEFORE SURVEY CALIBRATION SUMMARY

PERFORMED: 78/11/13
PROGRAM FILE: IS (VERSION 10.52 78/ 6/28)

DITD	MEASURED		CALIBRATED		UNITS
	ZERO	PLUS	ZERO	PLUS	
ILD	5.3	547.5	0.0	499.9	MM/M
ILM	3.3	507.8	0.0	499.9	MM/M
SFL	2.6	516.5	0.0	499.9	MM/M

ILM SONDE ERROR CORRECTION : 3.5 MM/M
ILD SONDE ERROR CORRECTION : 10.5 MM/M

SGTE DETECTOR CALIBRATION SUMMARY

GR	MEASURED		CALIBRATED	UNITS
	BKGD	JIG		
	60	208	164	GAPI

7
7
7
7
7

2-05-79 010964e

2-05-79

010964e