

GL02654

Schlumberger

BGT CALIPER LOG

COUNTY
FIELD
LOCATION
WELL
COMPANY

COMPANY E G & G IDAHO, INC.

WELL RRGP # 5

FIELD RAFT RIVER

COUNTY CASSIA STATE IDAHO

LOCATION NE SW
Other Services:
DIL/GR, FBS
BHC/GR/TTI
HRT, ICS
FDC/CNL/GR

API SERIAL NO. SEC. TWP RANGE
 22 15S 26E

Permanent Datum: GROUND LEVEL; Elev.: 4988
Log Measured From KB 16 Ft. Above Perm. Datum
Drilling Measured From KB
Elev.: K.B. 5004
D.F.
G.L. 4988

Date	<u>9/13/78</u>		
Run No.	<u>ONE</u>		
Depth—Driller	<u>4925</u>		
Depth—Logger (Schl.)	<u>4936</u>		
Btm. Log Interval	<u>4934</u>		
Top Log Interval	<u>3394</u>		
Casing—Driller	<u>9 5/8 @ 3408</u>	<u>@</u>	<u>@</u>
Casing—Logger	<u>3417</u>		
Bit Size	<u>8.75</u>		
Type Fluid in Hole	<u>FORMATION WATER (FLOWING)</u>		
Dens.	Visc.	<u>NA</u>	<u>NA</u>
pH	Fluid Loss	<u>NA</u>	<u>NA</u> ml
Source of Sample	<u>FLOWLINE</u>		
Rm @ Meas. Temp.	<u>@</u> °F	<u>@</u> °F	<u>@</u> °F
Rmf @ Meas. Temp.	<u>@</u> °F	<u>@</u> °F	<u>@</u> °F
Rmc @ Meas. Temp.	<u>@</u> °F	<u>@</u> °F	<u>@</u> °F
Source: Rmf Rmc			
Rm @ BHT	<u>@</u> °F	<u>@</u> °F	<u>@</u> °F
Circulation Stopped	<u>9/13 @ 0700</u>		
Logger on Bottom	<u>9/14 @ 1200</u>		
Max. Rec. Temp.	<u>270</u> °F	<u> </u> °F	<u> </u> °F
Equip. Location	<u>8060</u> <u>FVSTN</u>		
Recorded By	<u>ROONEY</u>		
Witnessed By Mr.	<u>STEADHAM</u>		

FOLD HERE The well name, location and borehole reference data were furnished by the customer.

Run No.	Service Order No.	API Serial No.	Fluid Level	SCALE CHANGES		REMARKS:
				Type Log	Depth	
<u>ONE</u>	<u>39834</u>		<u>FULL</u>			<u>2-05-79 039834</u>
EQUIPMENT DATA						
CALIBRATION DATA						
Speed - F.P.M. <u>50</u>						
GR BKG. CPS Source CPS Tc						

All interpretations are opinions based on inferences from electrical or other measurements and we cannot, and do not guarantee the accuracy or correctness of any interpretations, and we shall not, except in the case of gross or willful negligence on our part, be liable or responsible for any loss, costs, damages or expenses incurred or sustained by anyone resulting from any interpretation made by any of our officers, agents or employees. These interpretations are also subject to Clause 4 of our General Terms and Conditions as set out in our current Price Schedule.

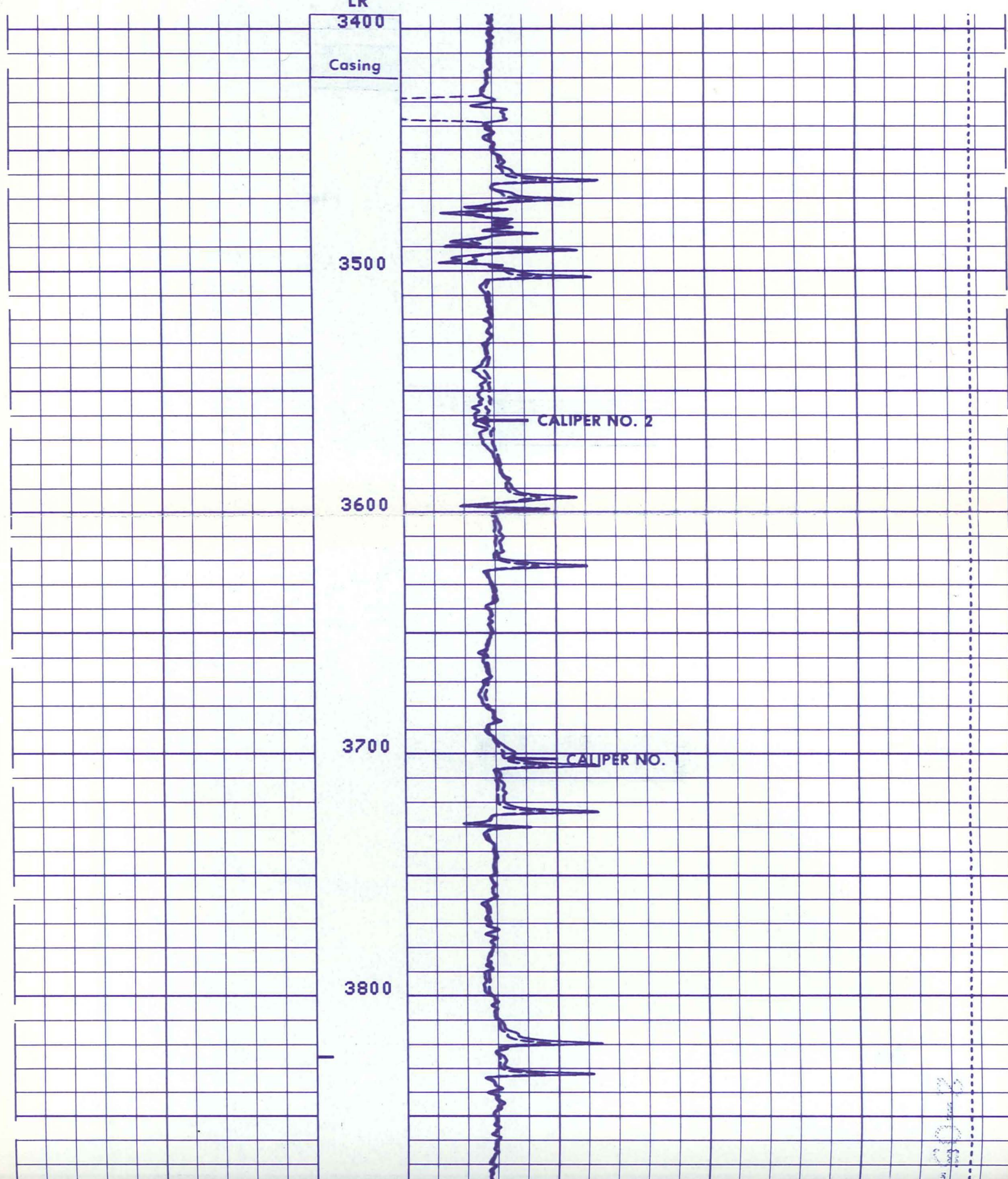
TENSION	<u>10000</u>	<u>0</u>
4 ARM CALIPER	<u>25</u> CALIPER 1	<u>45</u>
	<u>25</u> CALIPER 2	<u>45</u>

2-05-79 039834

	TENS(LB)	0.0
10000.		
CALIPER 1		
5.000		45.00
CALIPER 2		
5.000		45.00

LR

LR

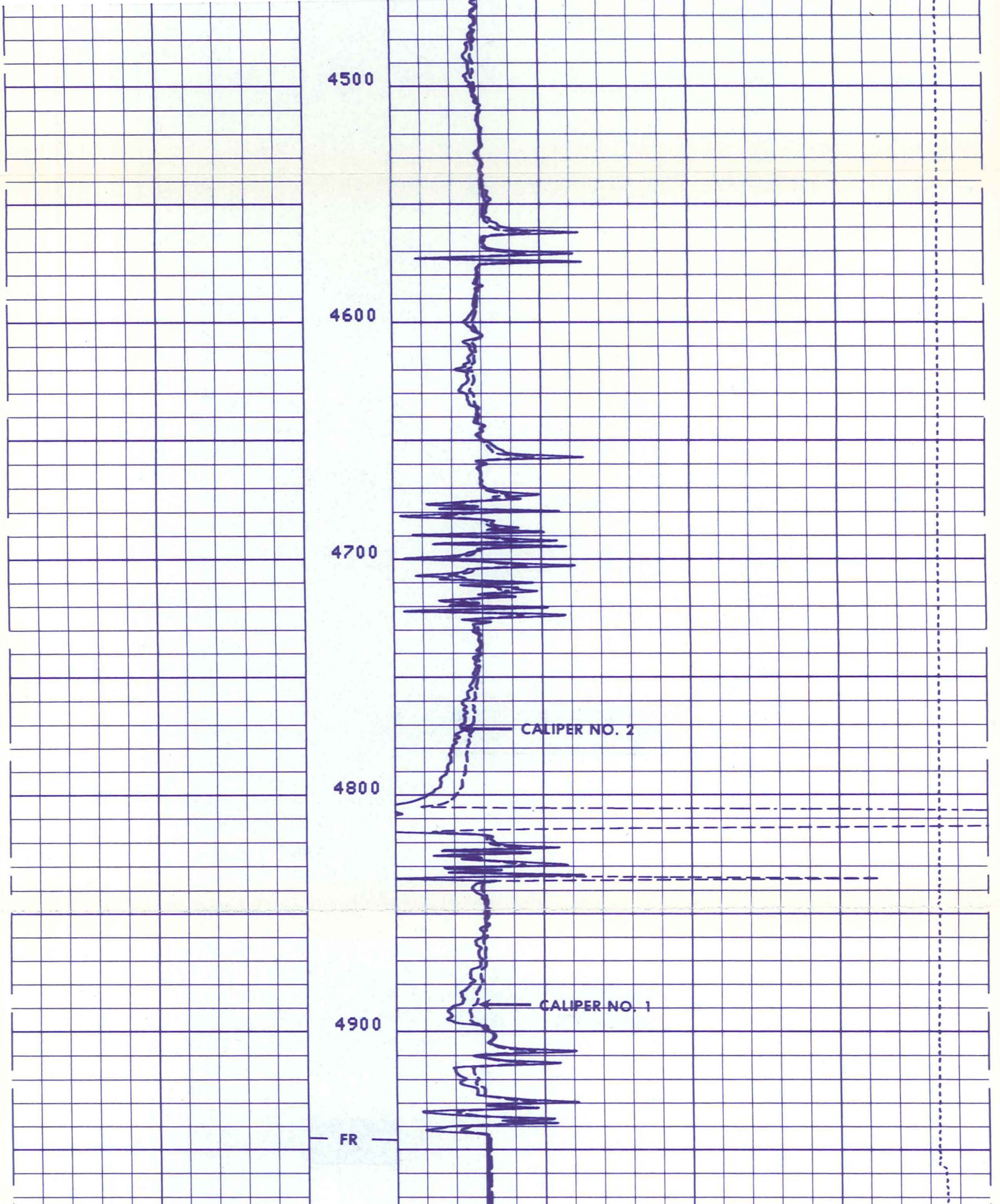


039834

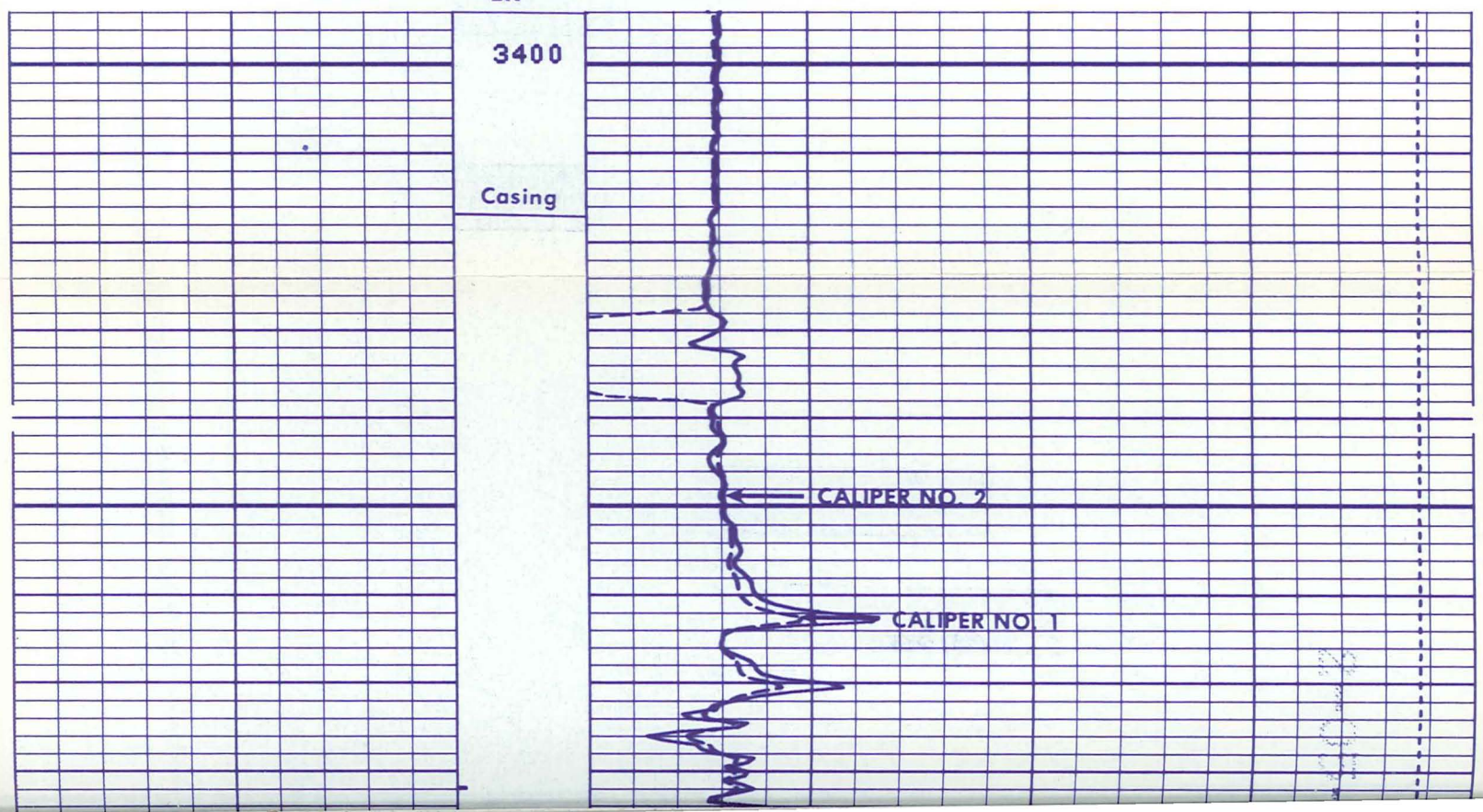
2-05-79

039834

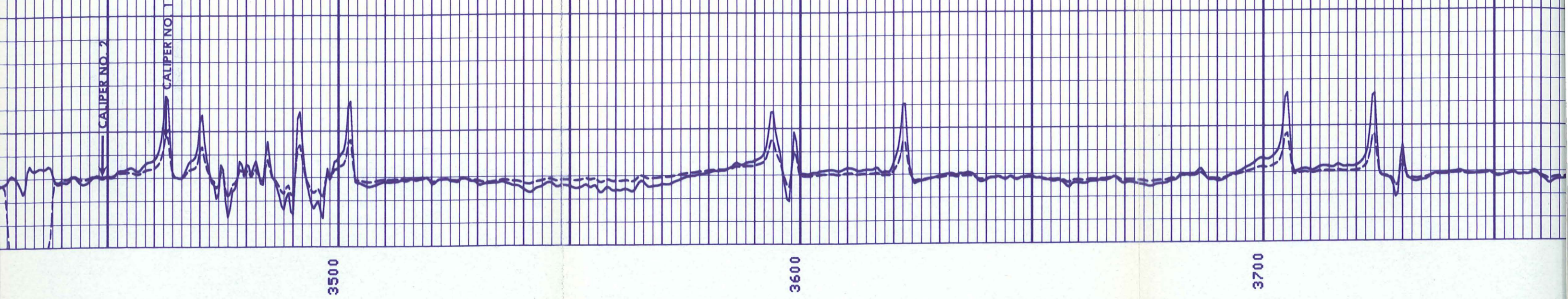




LR



2-05-79 039834

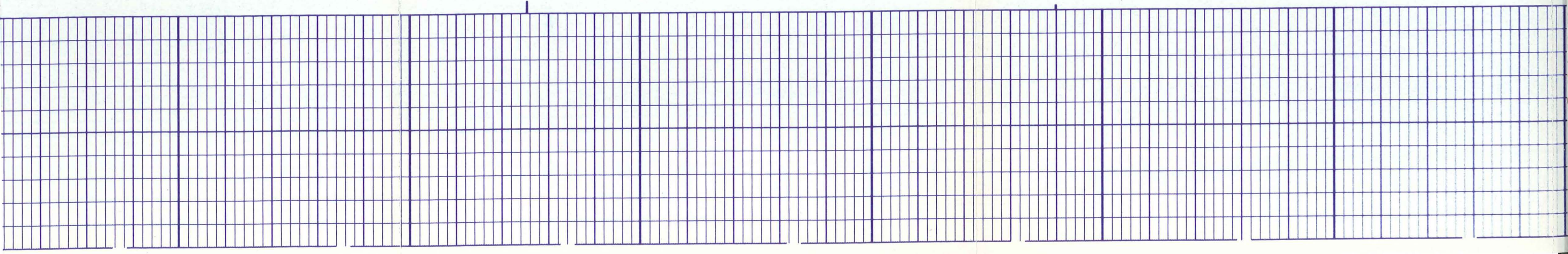


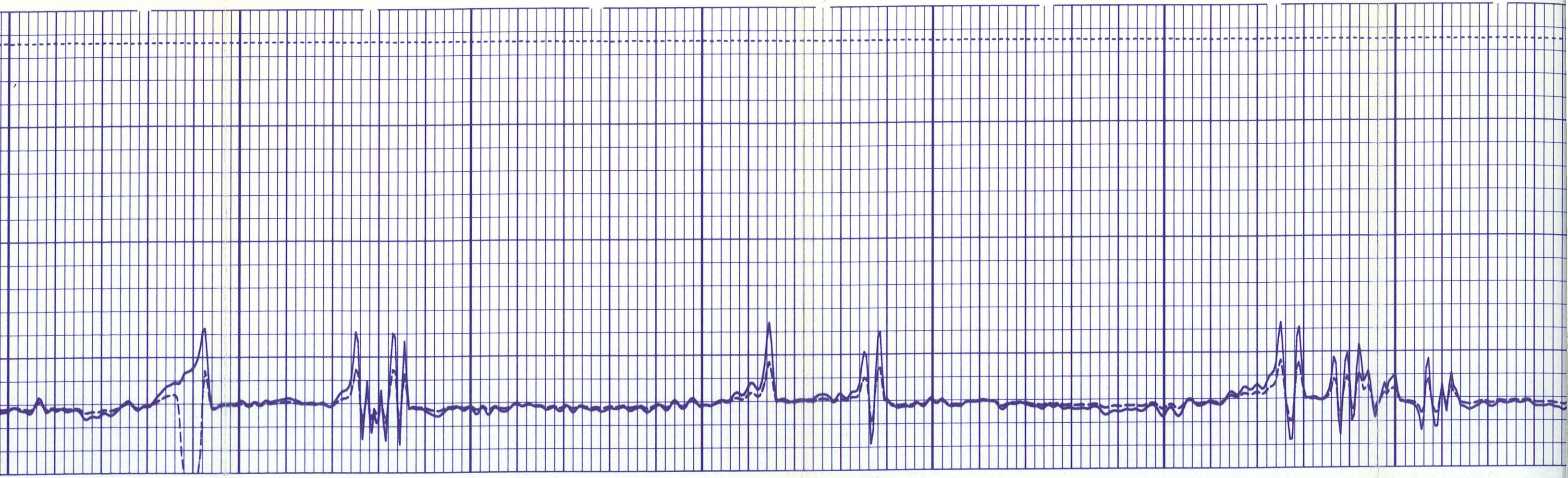


3800

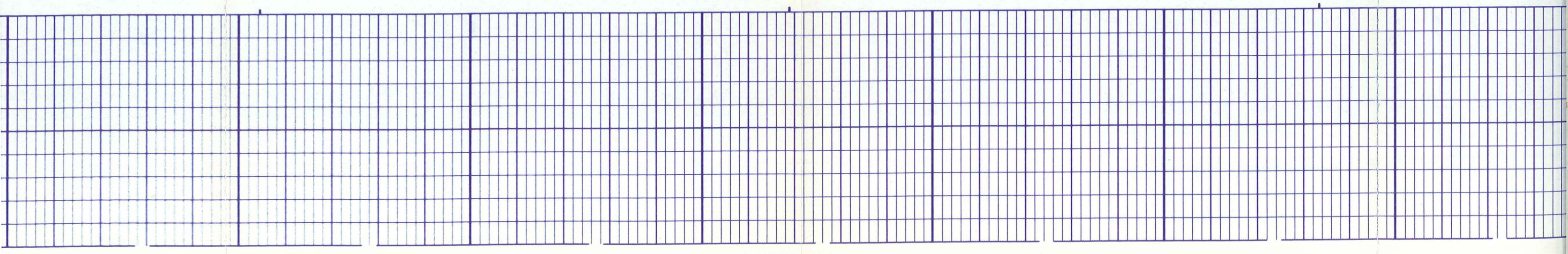
3900

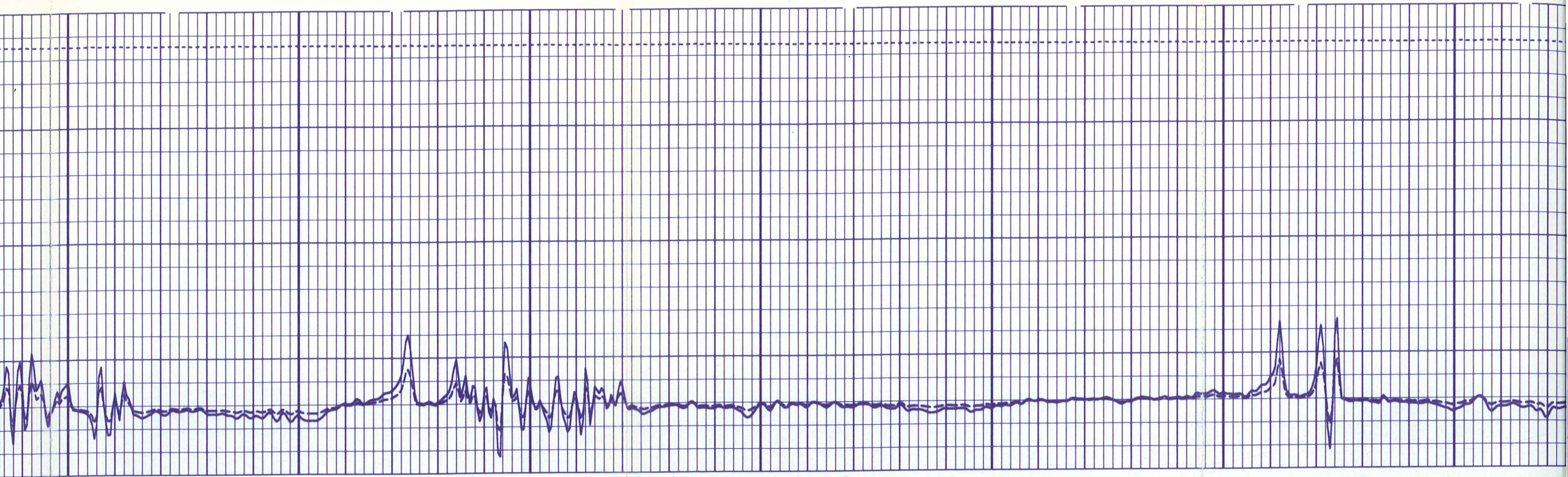
4000





4000 4100 4200 4300



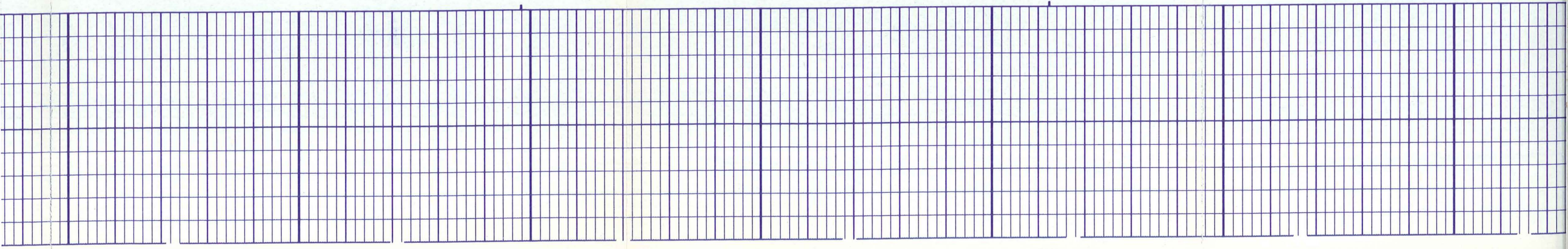


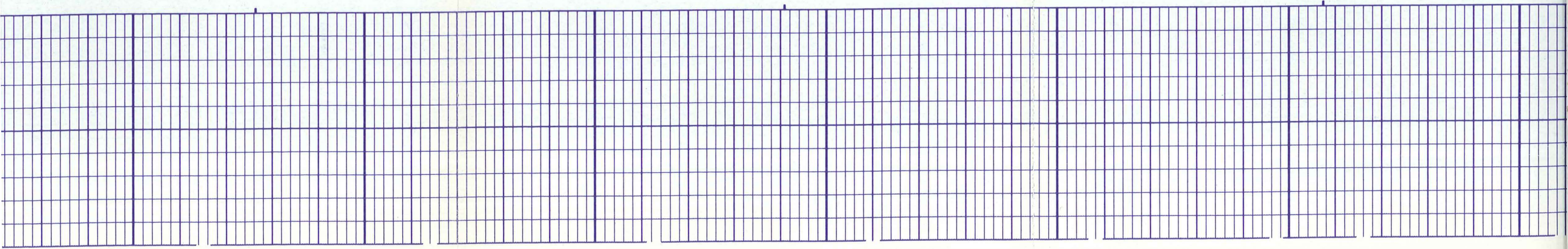
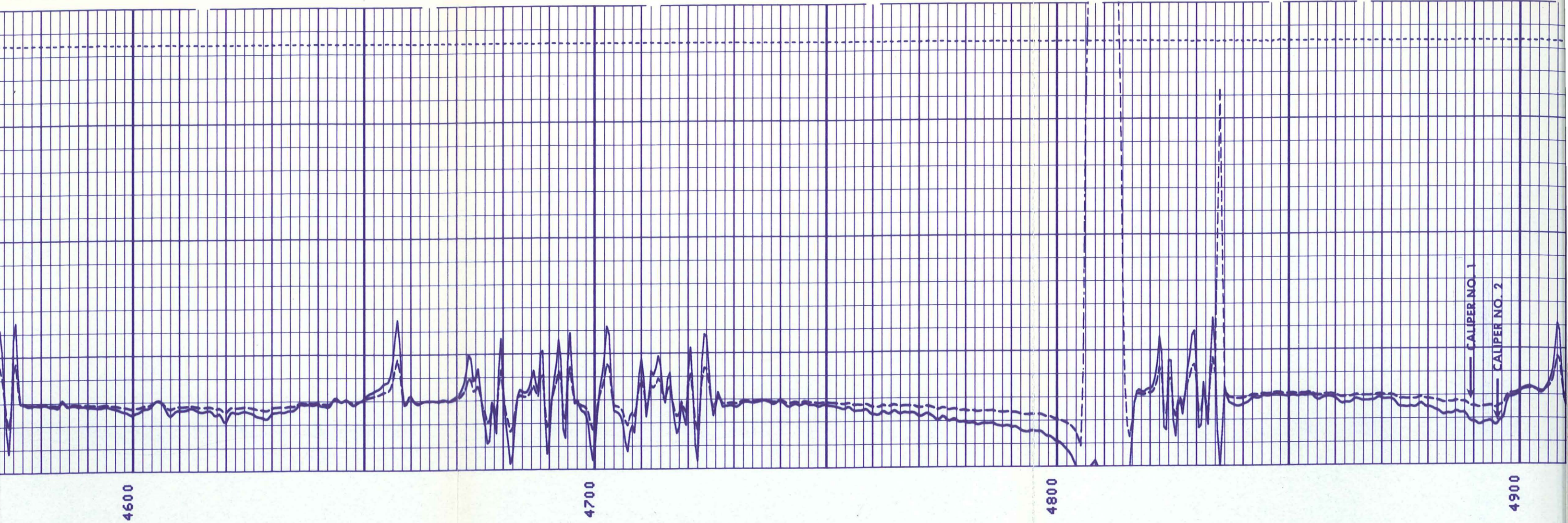
4300

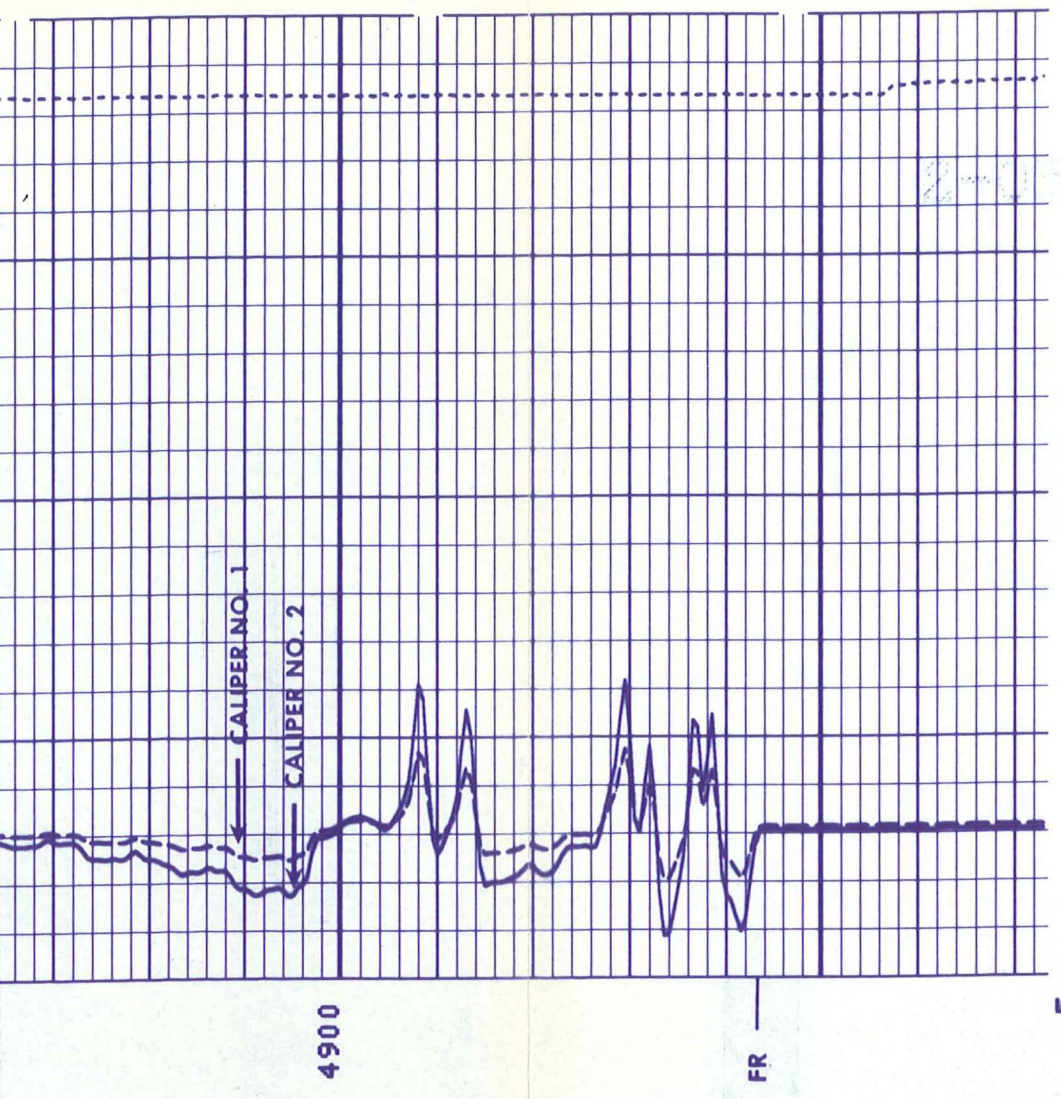
4400

4500

4600

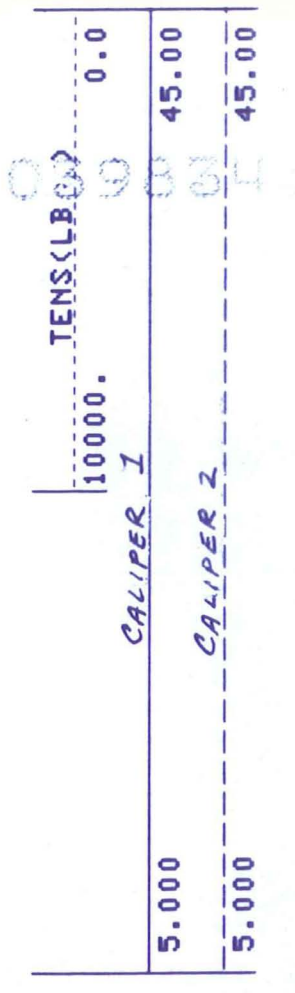






2-10-79

5550



555