

GL02655  
Schlumberger

**BOREHOLE COMPENSATED  
SONIC LOG**

COMPANY EG & G IDAHO, INC.  
 WELL RRGD #5  
 FIELD RAFT RIVER  
 COUNTY CASSIA STATE IDAHO

LOCATION NE, SW  
 API SERIAL NO. 22 SEC. 15S TWP. 26E RANGE

Other Services:  
 DIL/GR  
 8GT CALIPER  
 HRT, TCS

Permanent Datum: GROUND LEVEL; Elev.: 4988  
 Log Measured From KR 15 Ft. Above Perm. Datum  
 Drilling Measured From KR Elev.: 5004  
 D.F. —  
 G.I. 4988

Date	9-13-78		
Run No.	TWO		
Depth-Driller	4925		
Depth-Logger (Schl.)	4936		
Bitm. Log Interval	4934		
Top Log Interval	3370		
Casing-Driller	958 @ 3108	@	@
Casing-Logger	3417 @ 3117	@	@
Bit Size	8 3/4		
Type Fluid in Hole	FORMATION WATER (FLOWLINE)		
Dens. Visc.	NA NA		
pH Fluid Loss	NA NA	ml	ml
Source of Sample	FLOWLINE		
Rm @ Meas. Temp.	@	@	@
Rmf @ Meas. Temp.	@	@	@
Rmc @ Meas. Temp.	@	@	@
Source: Rmf Rmc			
Rm @ BHT	@	@	@
Circulation Stopped	9-13 @ 0700		
Logger on Bottom	9-13 @ 1700		
Max. Rec. Temp.	270 °F		
Equip. Location	8060 EASTN		
Recorded By	ROONEY		
Witnessed By Mr.	STEARNS		

FOLD HERE The well name, location and borehole reference data were furnished by the customer.

Run No.	TWO
Service Order No.	39824
Fluid Level	FULL

SCALE CHANGES			
Type Log	Depth	Scale Up Hole	Scale Down Hole

EQUIPMENT DATA	
Sonic Panel No.	SLM CA 120
Sonic Cart No.	EA 145
Sonic Sonde No.	KB 160
Mem. Panel No.	CS4
G.R. Cart No.	JAA 1140
G.R. Panel No.	NLM RR 128
Caliper No.	VCD 502
TTR No.	CS4
Centralizers: No.	ONE
Type	CMEZ
Standoffs: No.	—
Type	—
Time Const.-Sec.	—
Speed - F.P.M.	60

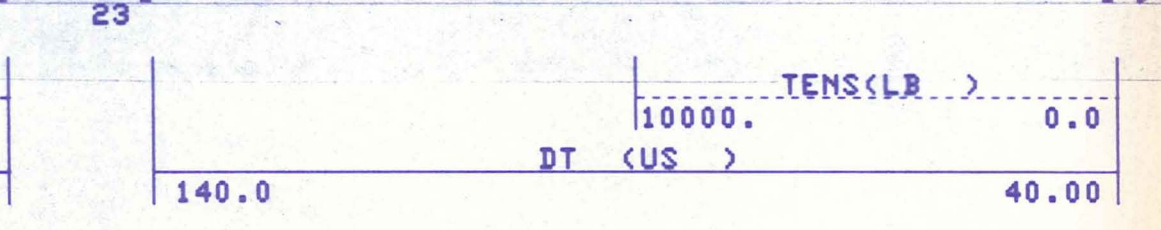
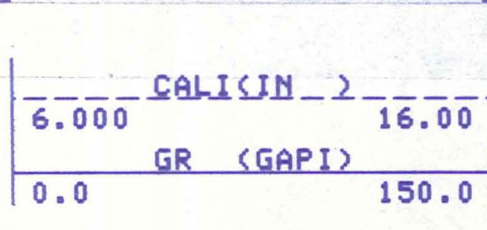
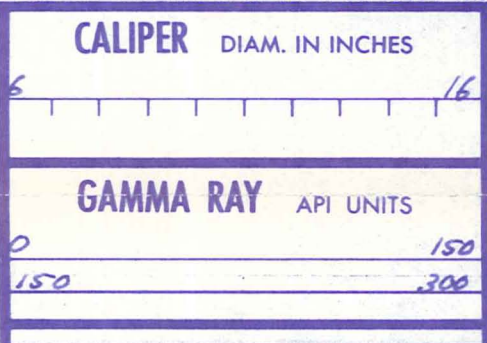
LOGGING DATA					
Porosity Selectors				Depth	
Δtm	Δtf	Cp	φ Scale	From	To
51.3	189	1.0	20/TRK	4934	3370

CALIBRATION DATA	
GR	BKG. CPS 61
	Source CPS 210
	Tc Sec —

REMARKS  
 INTERVAL BETWEEN 3582-4090  
 NOT LOGGED DUE TO EXTREME  
 BOREHOLE CONDITIONS

Velocity (ft/sec) = 1,000,000  
 Interval Transit Time (microseconds per foot)

All interpretations are opinions based on inferences from electrical or other measurements and we cannot, and do not guarantee the accuracy or correctness of any interpretations, and we shall not, except in the case of gross or willful negligence on our part, be liable or responsible for any loss, costs, damages or expenses incurred or sustained by anyone resulting from any interpretation made by any of our officers, agents or employees. These interpretations are also subject to Clause 4 of our General Terms and Conditions as set out in our current Price Schedule.

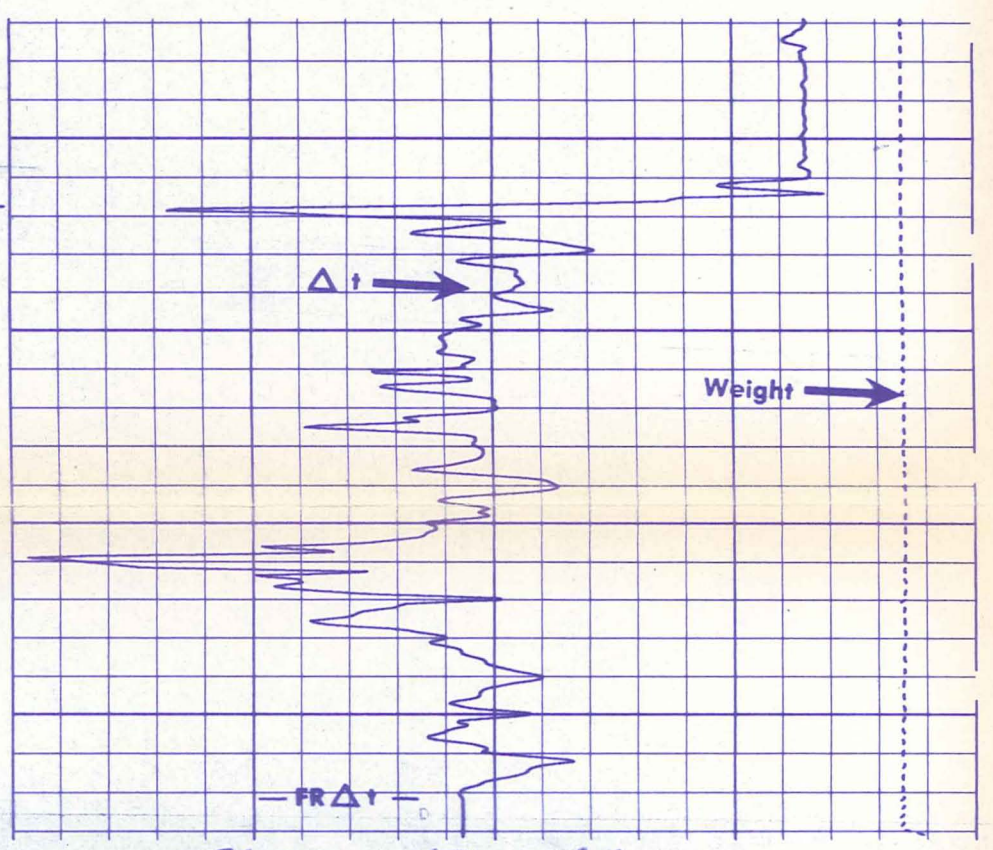
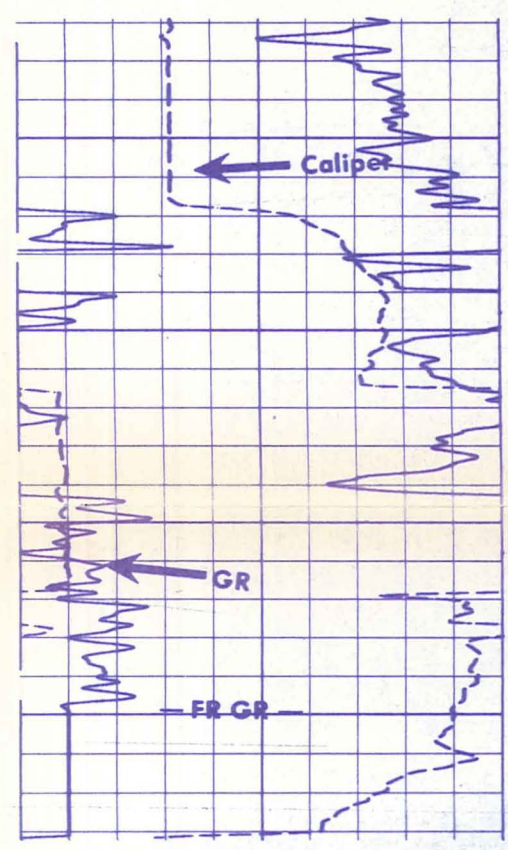


23  
23  
23  
23  
23  
23  
00000

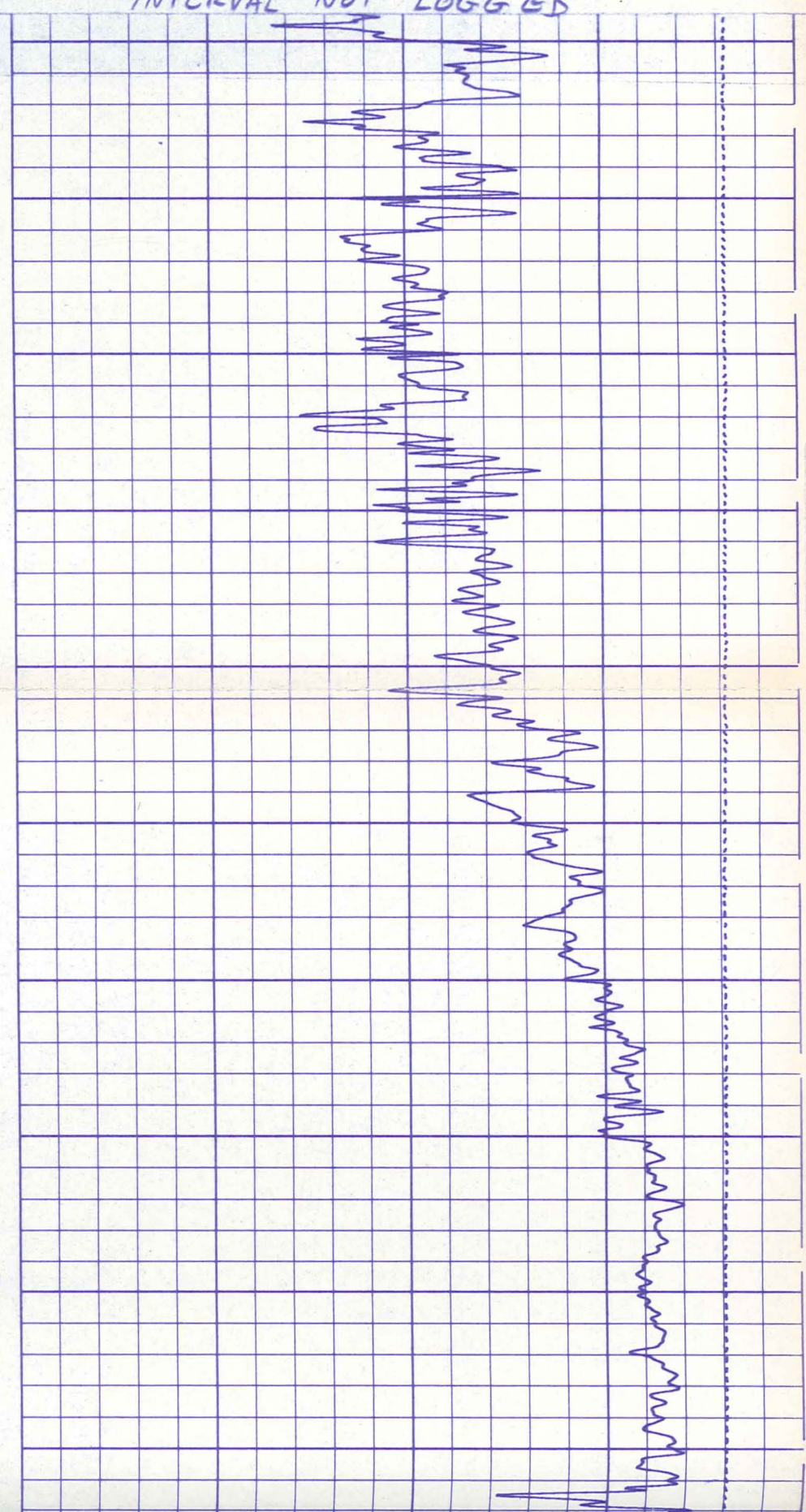
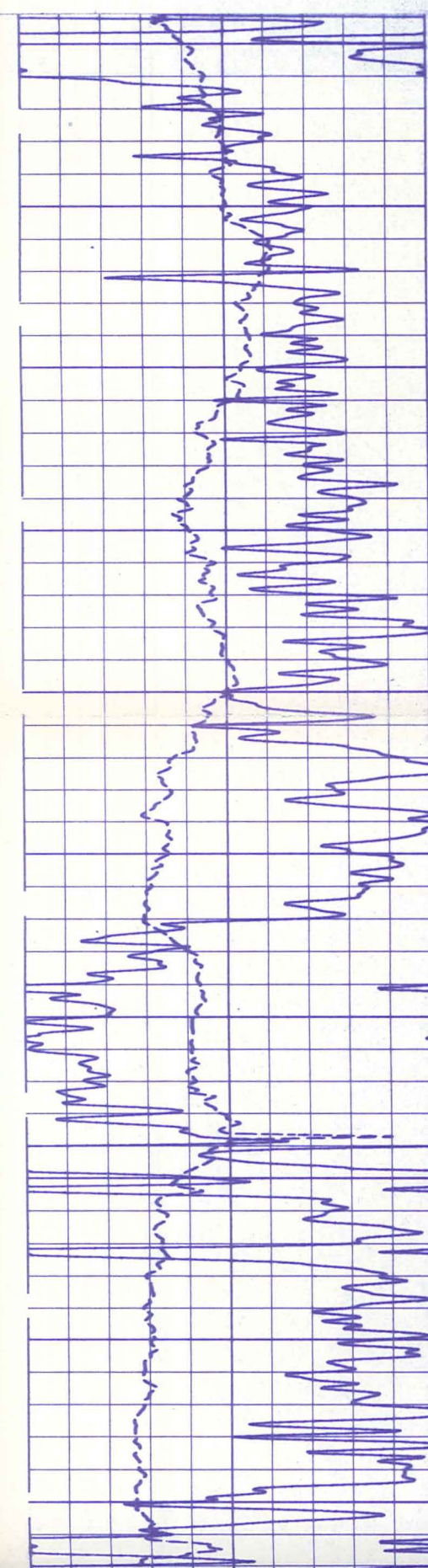
CALI(IN )	
6.000	16.00
GR (GAPI)	
0.0	150.0

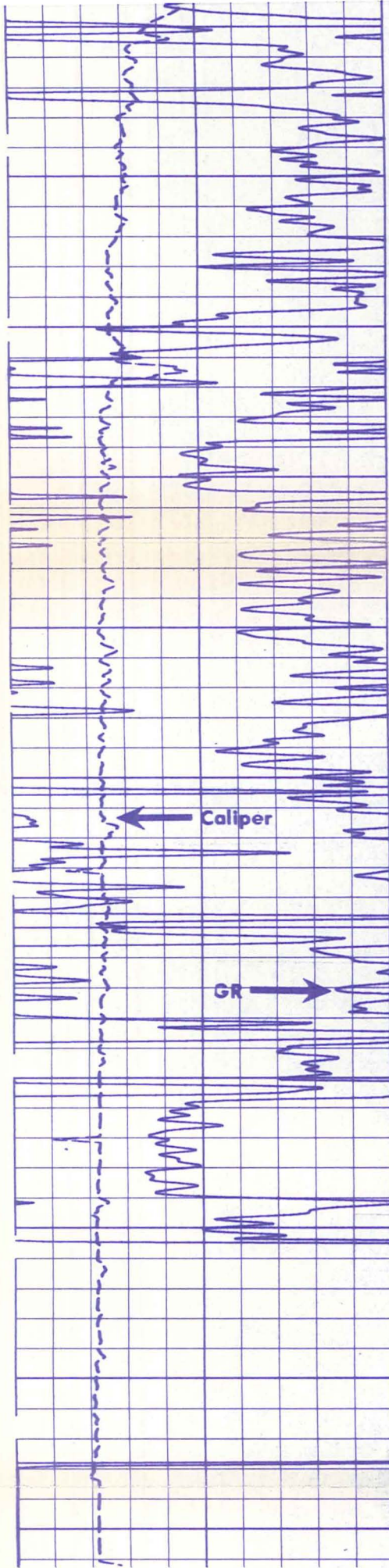
TENS(LB )	
10000.	0.0
DT (US )	
140.0	40.00

23  
23  
23  
23  
23  
8  
8  
8  
8

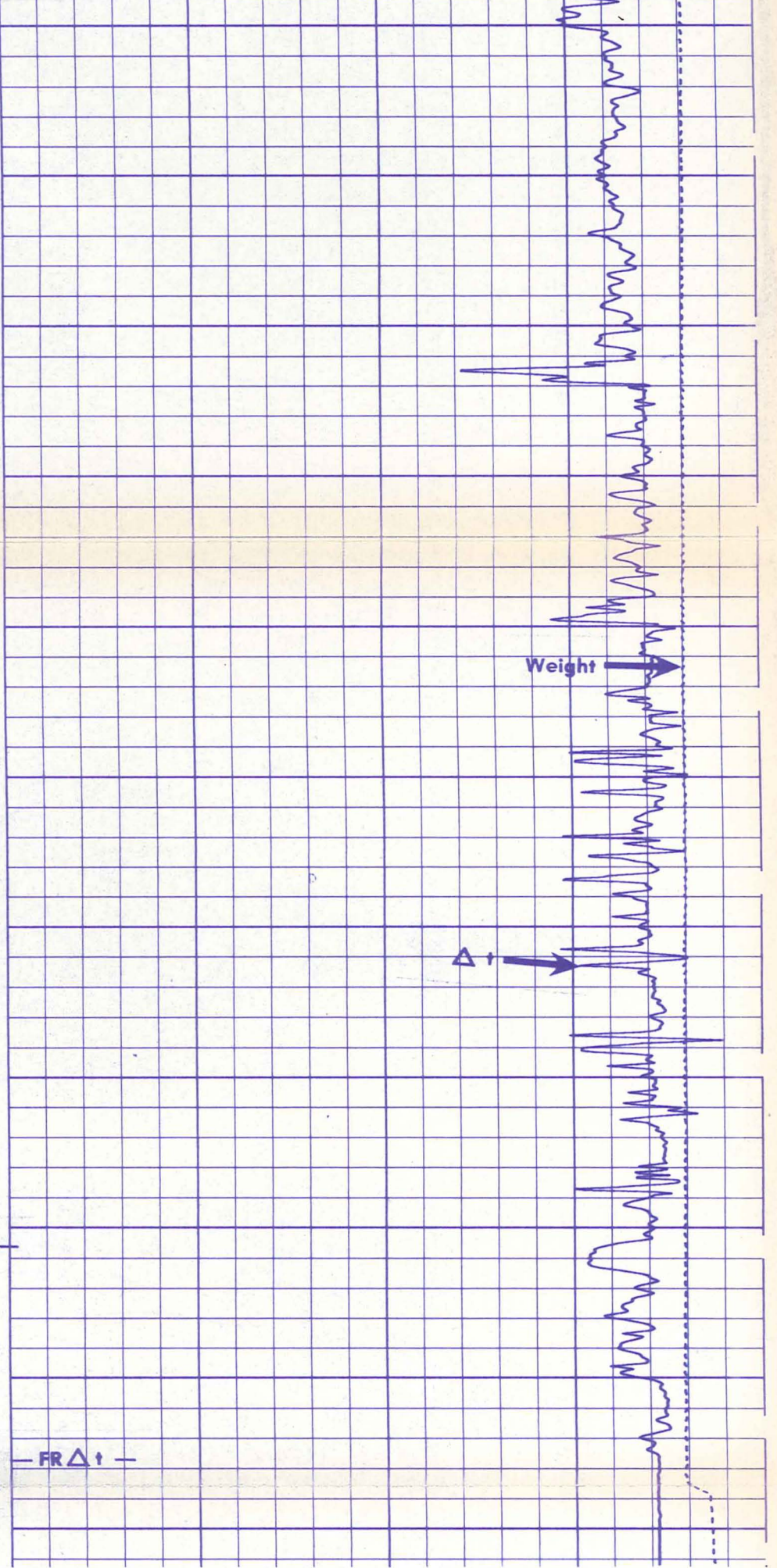


INTERVAL NOT LOGGED





4500  
4600  
4700  
4800  
4900



FR GR  
FR Δt  
FB

13  
13  
13  
13  
2

CALI(IN )	
6.000	16.00
GR (GAPI)	
0.0	150.0

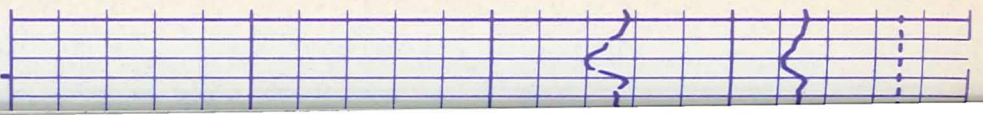
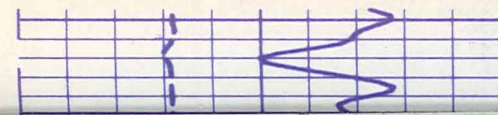
TENS(LB )	
10000.	0.0
DT (US )	
140.0	40.00

23  
23  
23  
23  
23  
16

CALI(IN )	
6.000	16.00
GR (GAPI)	
0.0	150.0

TENS(LB )	
10000.	0.0
SPHI( )	
0.3000	-0.100
DT (US )	
140.0	40.00

16  
16  
16  
16  
16  
8  
8  
8

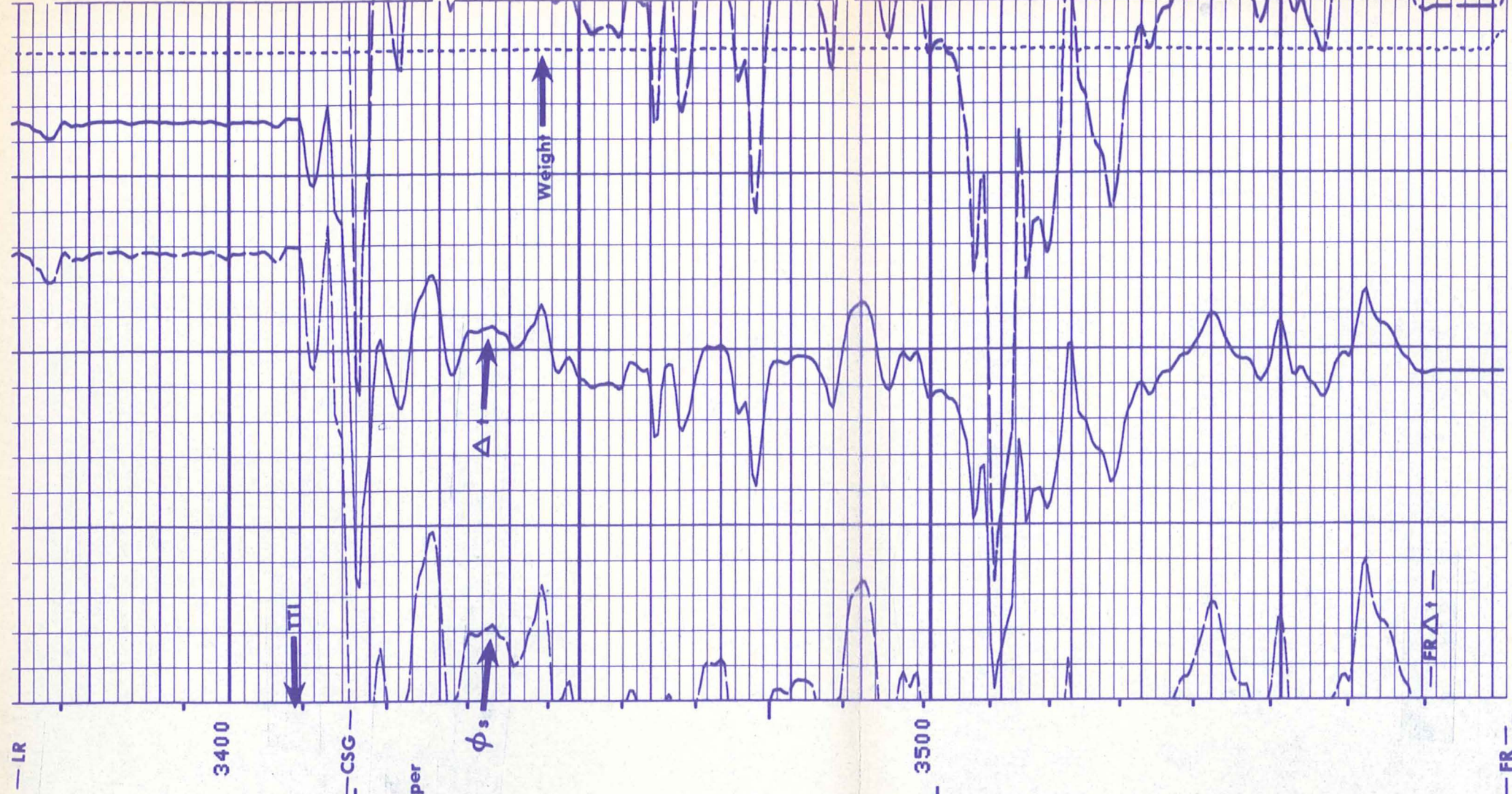
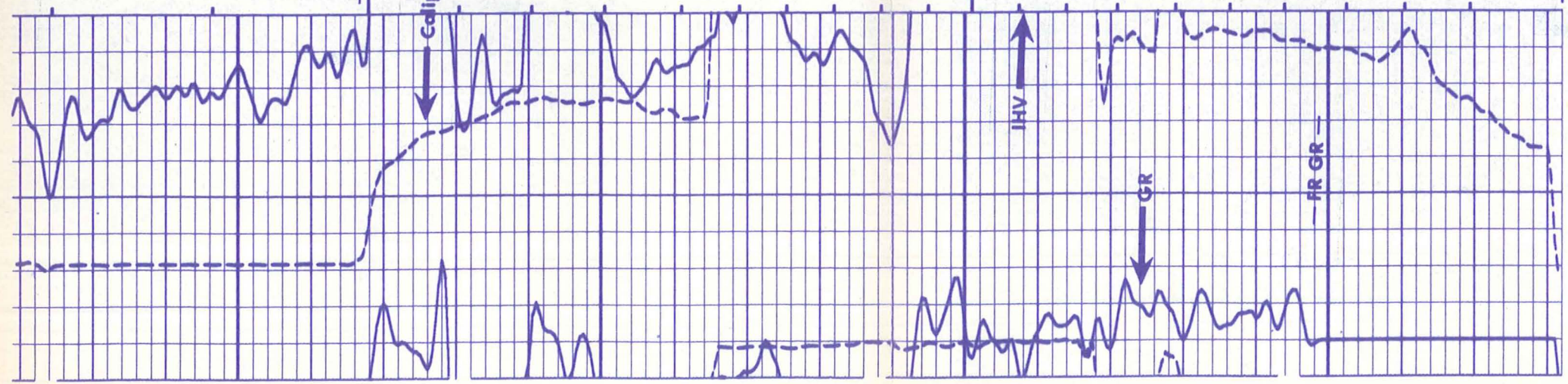


6.000  
GR (GAPI)  
0.0

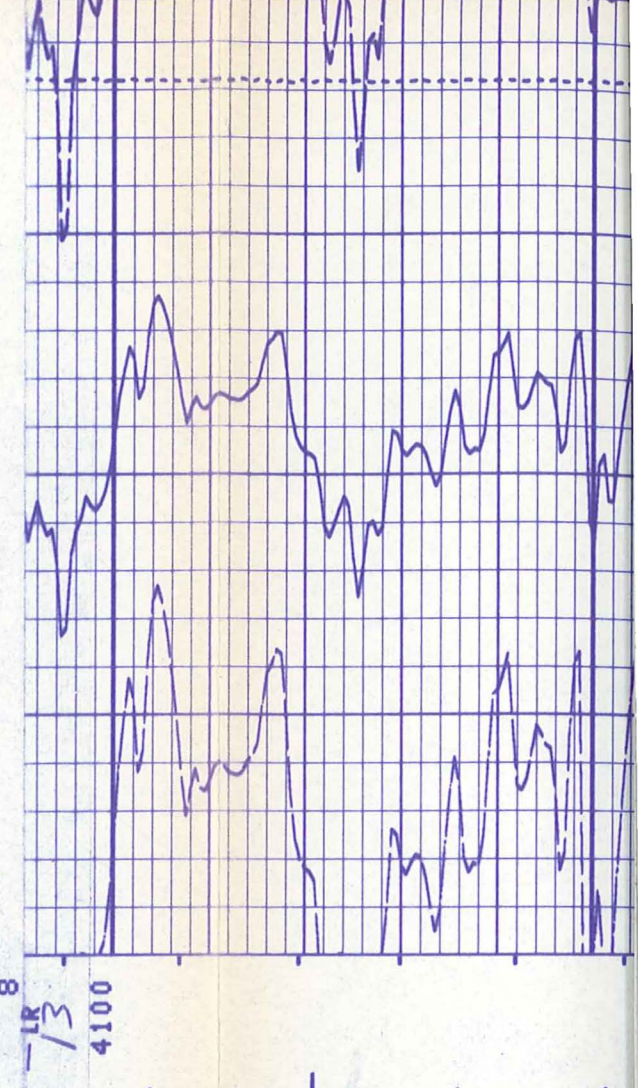
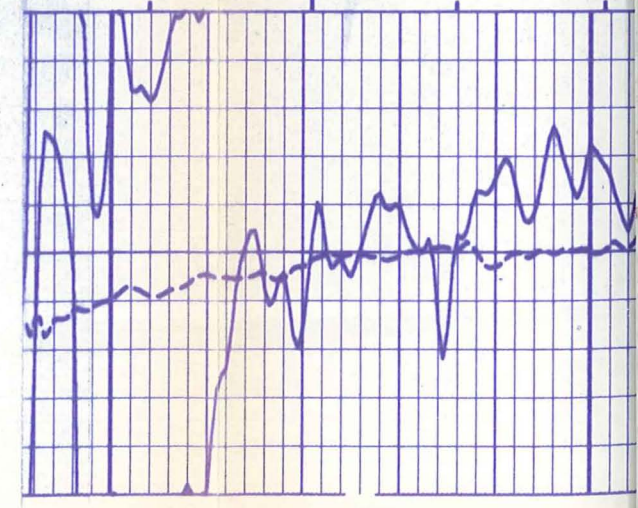
0.3000  
DT (US)  
140.0

SPHLS  
-0.100  
40.00

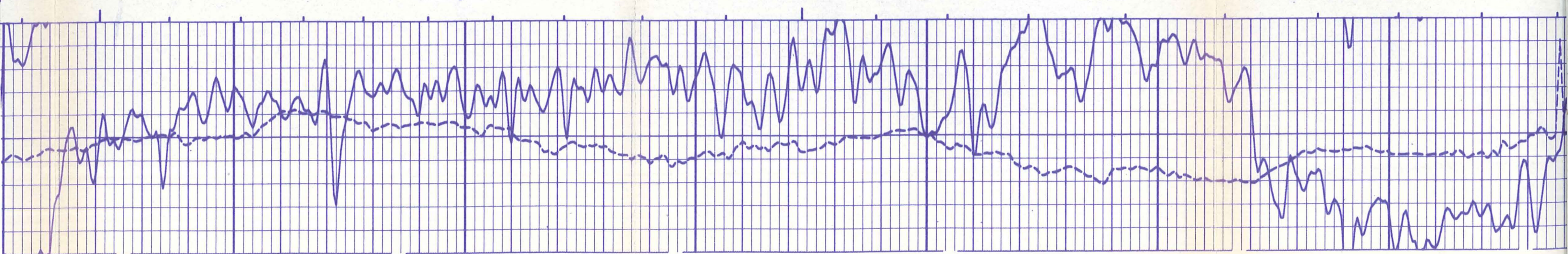
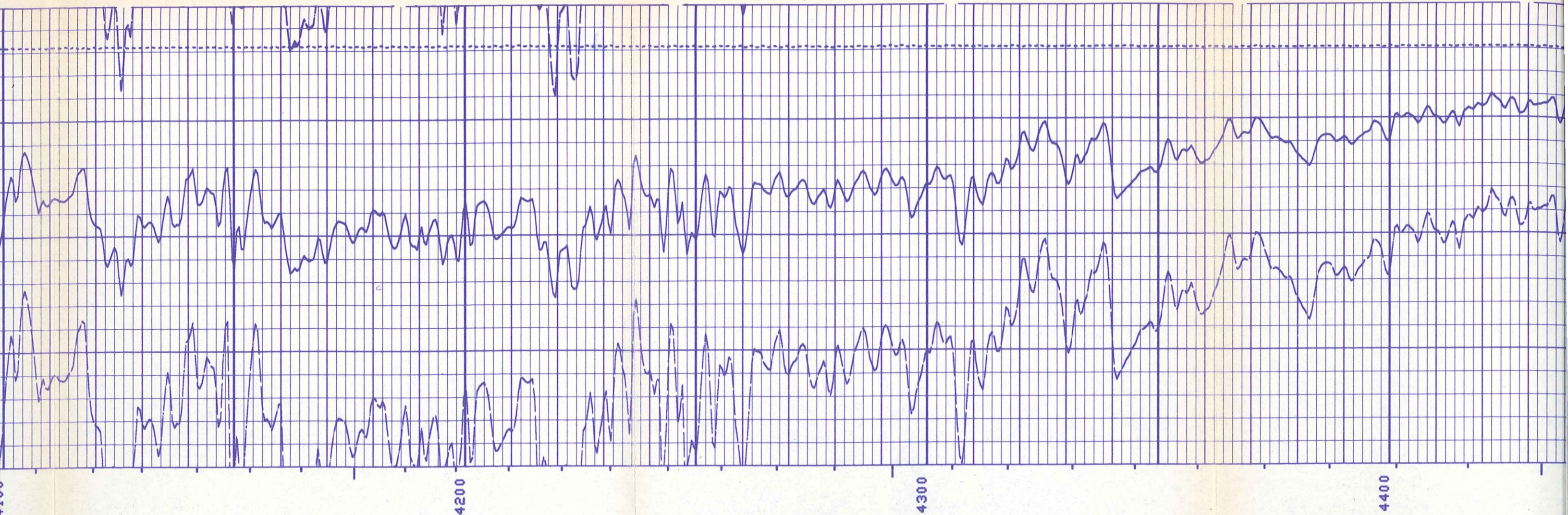
16  
16  
16  
16  
16  
0  
8  
8  
8

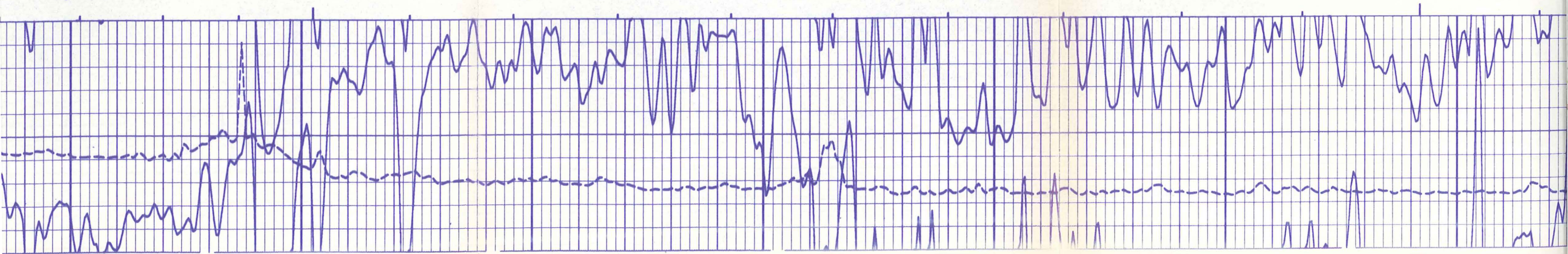
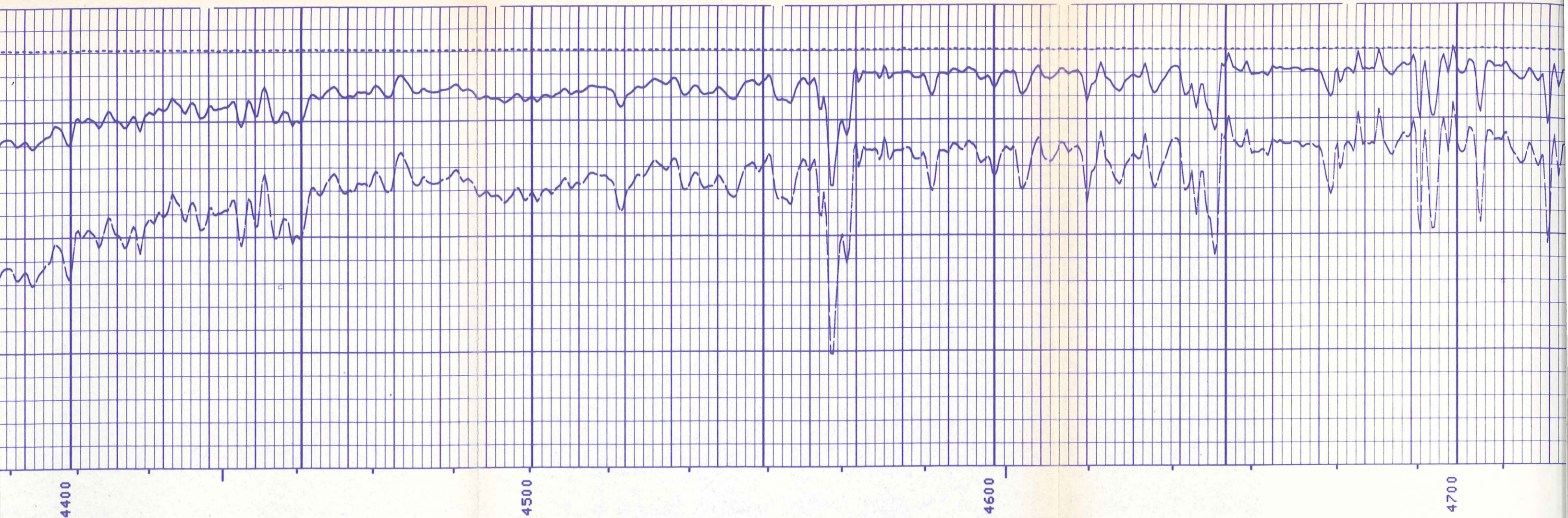


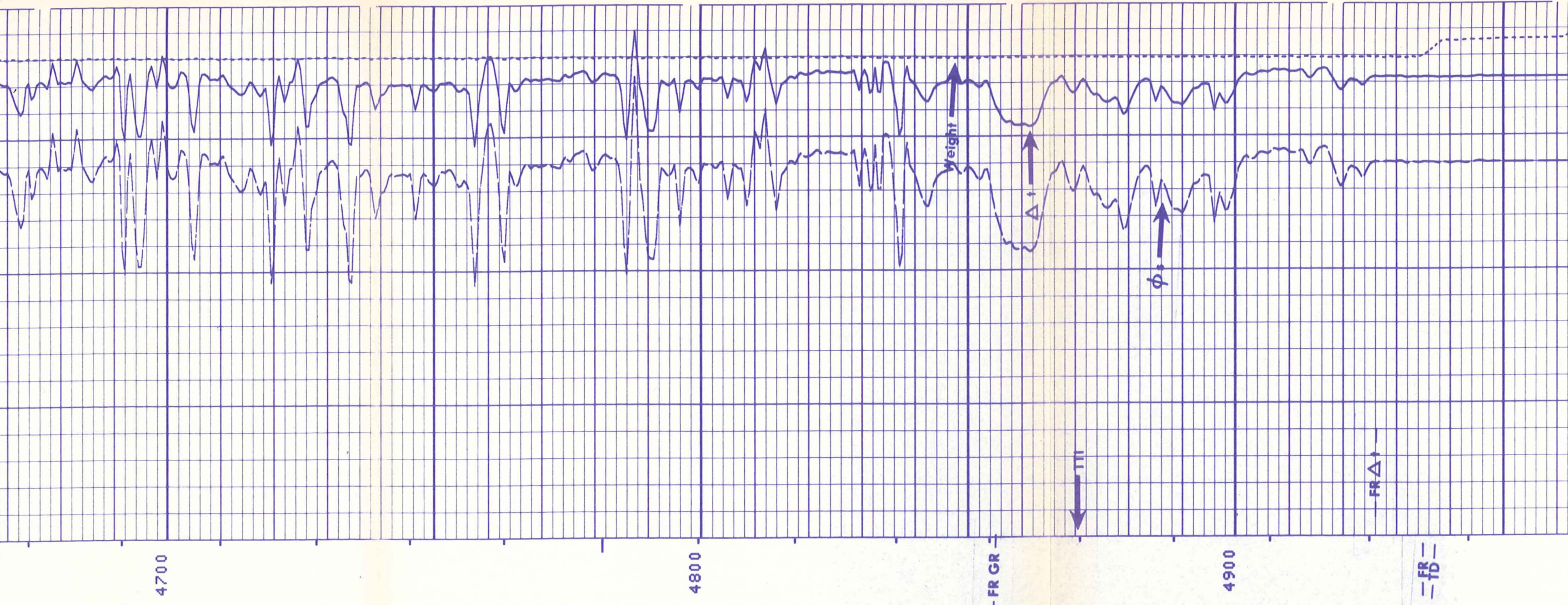
INTERVAL NOT LOGGED



13  
4100

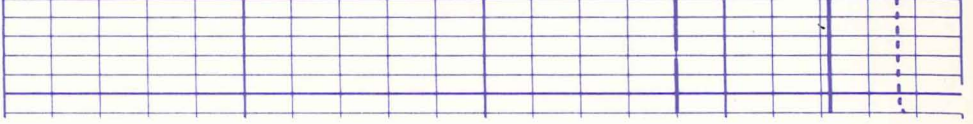
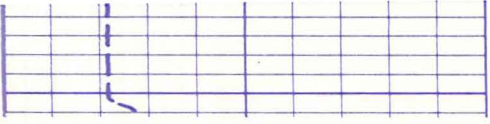






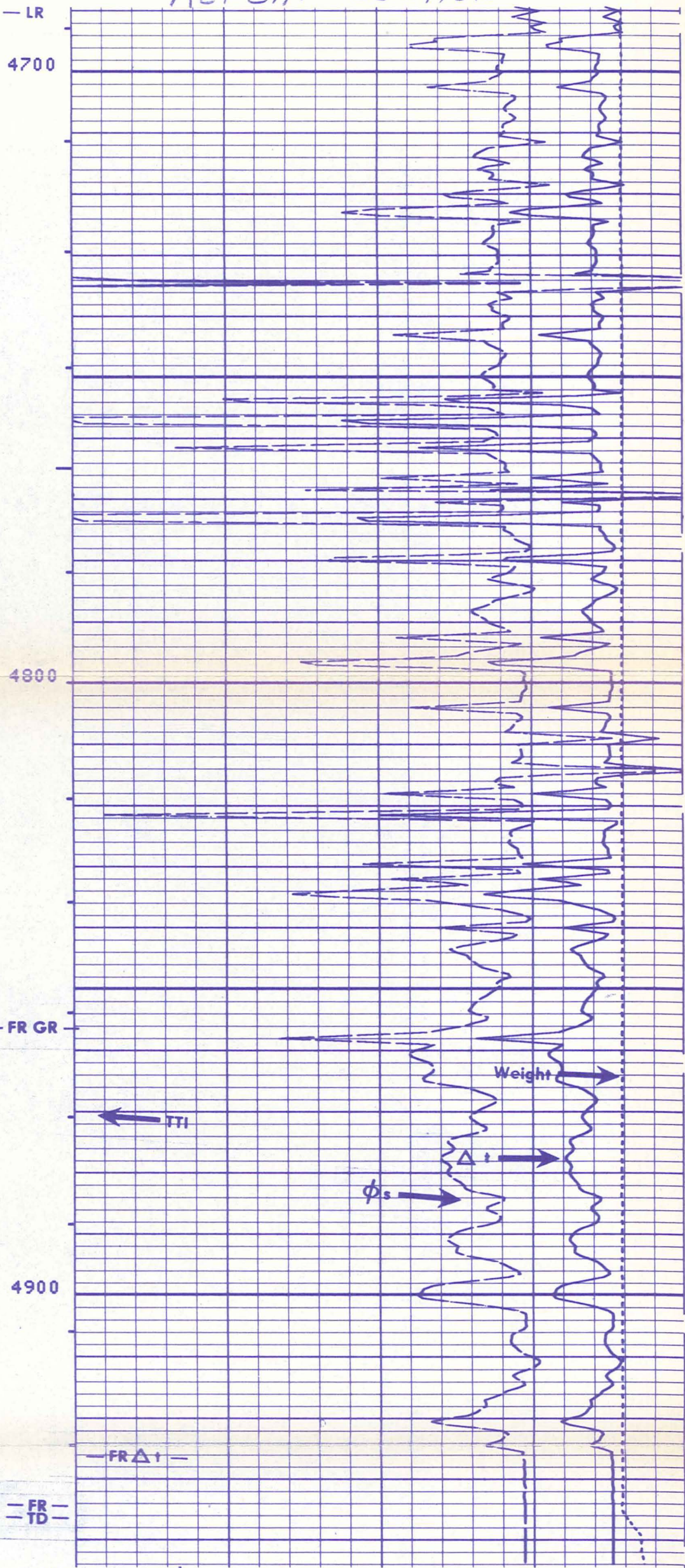
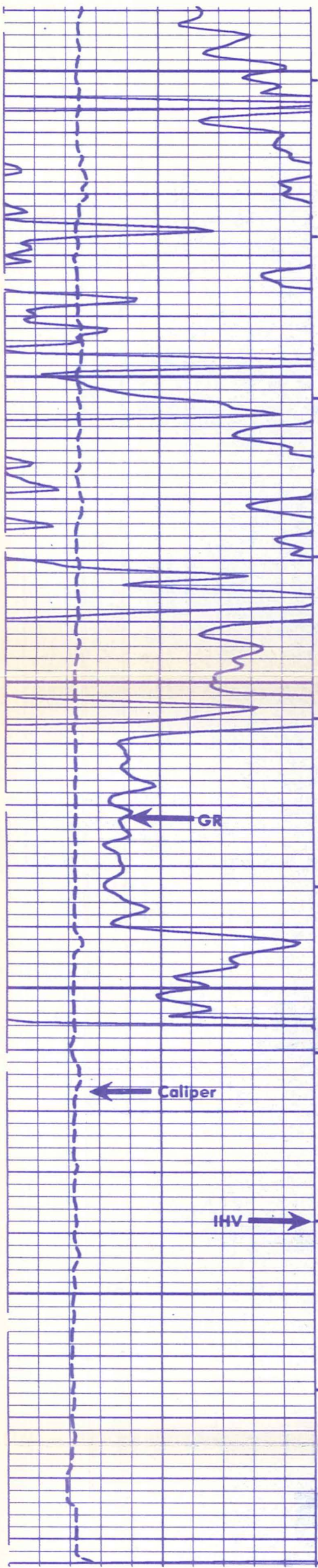
13  
13  
13  
13  
13  
12  
12  
12  
12  
12

REPEAT SECTION



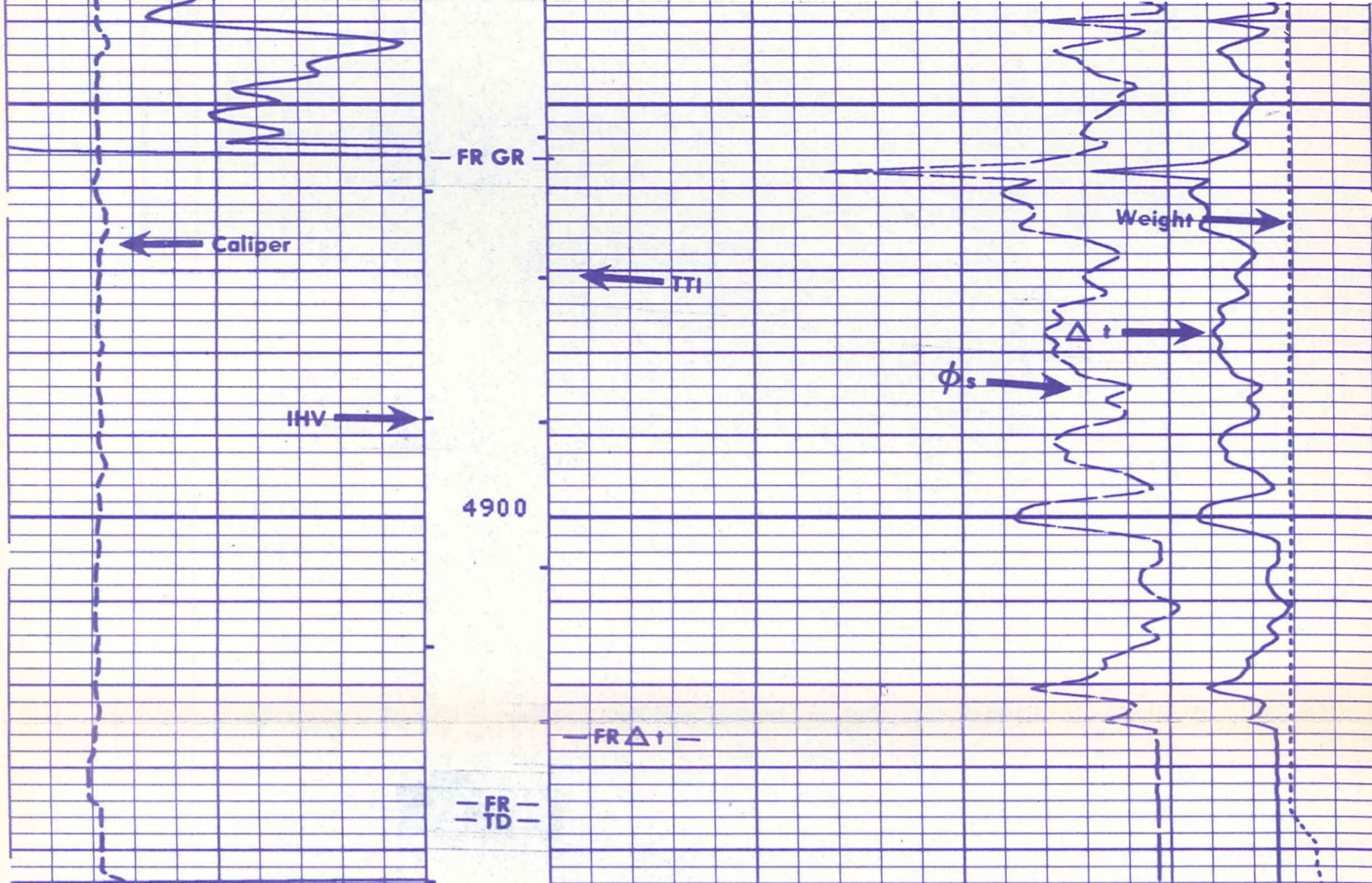
13  
13  
13  
13  
13  
13  
12  
12  
12  
12  
12  
12

REPEAT SECTION



12  
12  
12  
12  
12  
12  
16





12  
12  
12  
12  
12  
16

	CALI(IN )	
6.000		16.00
	GR (GAPI)	
0.0		150.0

	TENS(LB )	
	10000.	0.0
0.3000	SPHI( )	
		-0.100
	DT (US )	
140.0		40.00

16  
16  
16  
11  
11

BEFORE SURVEY CALIBRATION SUMMARY

PERFORMED: 78/09/13  
PROGRAM FILE: IS (VERSION 10.52 78/ 6/28)

SGTE DETECTOR CALIBRATION SUMMARY

GR	MEASURED		CALIBRATED	UNITS
	BKGD	JIG		
	61	210	164	GAPI

VCDD CALIPER CALIBRATION SUMMARY

CALI	MEASURED		CALIBRATED		UNITS
	SMALL	LARGE	SMALL	LARGE	
	7.8	12.6	8.0	12.0	IN



GL02655  
FILE\_CAB\_15\_DRAWER\_2