

Schlumberger

DUAL INDUCTION-SFL
WITH LINEAR CORRELATION LOG

GL02656

COUNTY CASSIA
 FIELD RAFT RIVER
 LOCATION 22 25S 26E
 WELL RRGP #5
 COMPANY E. G. & G.

COMPANY E. G. & G.
 WELL RRGP #5
 FIELD RAFT RIVER
 COUNTY CASSIA STATE IDAHO

LOCATION NE-SE
 API SERIAL NO. 23 SEC. 15S TWP 26E RANGE

Other Services:
 FDC - CNL - GR
 BHC - VDL - GR
 FBS

Permanent Datum: GL; Elev.: 4988
 Log Measured From KB 14 Ft. Above Perm. Datum
 Drilling Measured From KB Elev.: 5002
 D.F. 4988
 G.I. 4988

Date	7-7-78			
Run No.	ONE			
Depth-Driller	4911			
Depth-Logger	4919			
Bim. Log Interval	4916			
Top Log Interval	1513			
Casing-Driller	13 3/8 1500	@		@
Casing-Logger	1513			
Bit Size	12 1/4			
Type Fluid in Hole	WATER			
Dens. Visc.	1.0			
pH				
Fluid Loss		ml		ml
Source of Sample				
Rm @ Meas. Temp.	1.74 @ 72 °F	*	@	@
Rmf @ Meas. Temp.	--- @ --- °F	*	@	@
Rmc @ Meas. Temp.	--- @ --- °F	*	@	@
Source: Rmf Rmc	--- @ --- °F	*	@	@
Rm @ BHT	--- @ --- °F	*	@	@
Circulation Stopped	7-7 1000			
Logger on Bottom	7-7 1000			
Max. Rec. Temp.	274 °F			
Equip. Location	8053 RS			
Recorded By	TERRY/NOLD			
Witnessed By	PRESTWICH			

FOLD HERE The well name, location and borehole reference data were furnished by the customer.

Run No.	ONE				
Service Order No.	5138				
Fluid Level	FULL				
Salinity ppm. cl	-----				
Speed F.P.M.	90				
EQUIPMENT DATA					
Panel No.	IEM-BB-166				
Cart No.	DA-66				
Sonde No.	EA-62				
Mem. Panel No.	-----				
G.R. Panel No.	NLM-BB-1+1				
G.R. Cart No.	JAA-226				
Tape Recorder - (TTR)	MTU-947				
Depth Encoder - (DRE)	285/307				
Pressure Wheel - (CPW)	285/307				
Type Centralizers	-----				
Stand Off - Inches	1 1/2"				
CALIBRATION DATA					
SBR	*				
Sonde Error - ILM	*				
Sonde Error - ILD	*				
G.R. BKG. - CPS.	*				
G.R. Source - CPS.	*				
S.E. Set In Hole - Depth	*				
S.E. Corr. - Hole Size	*				
LOGGING DATA					
SBR	1.0				
S.E. Log - ILM	*				
S.E. Log - ILD	*		SEE CALIBRATION SUMMARY		
G.R. Scale per 100 Div.	*		AT END OF LOG		
G.R. - T.C.	*				
G.R. Sens.	*				

SCALE CHANGES			
Type Log	Depth	Scale Up Hole	Scale Down Hole

REMARKS

EXTRA REPEAT SECTION
 LOGGED TO VERIFY READINGS
 BELOW 4440 WERE VALID.

All interpretations are opinions based on inferences from electrical or other measurements and we cannot, and do not guarantee the accuracy or correctness of any interpretations, and we shall not, except in the case of gross or willful negligence on our part, be liable or responsible for any loss, costs, damages or expenses incurred or sustained by anyone resulting from any interpretation made by any of our officers, agents or employees. These interpretations are also subject to Clause 4 of our General Terms and Conditions as set out in our current Price Schedule.

SP (MV)	0.0	100.0	500.0	0.0
ILD (OHMM)	0.0	100.0		
SFLA (OHMM)	0.0	20.00		
SFLA (OHMM)	0.0	100.0	500.0	0.0

17
17
17
17
17
17

11
11
11

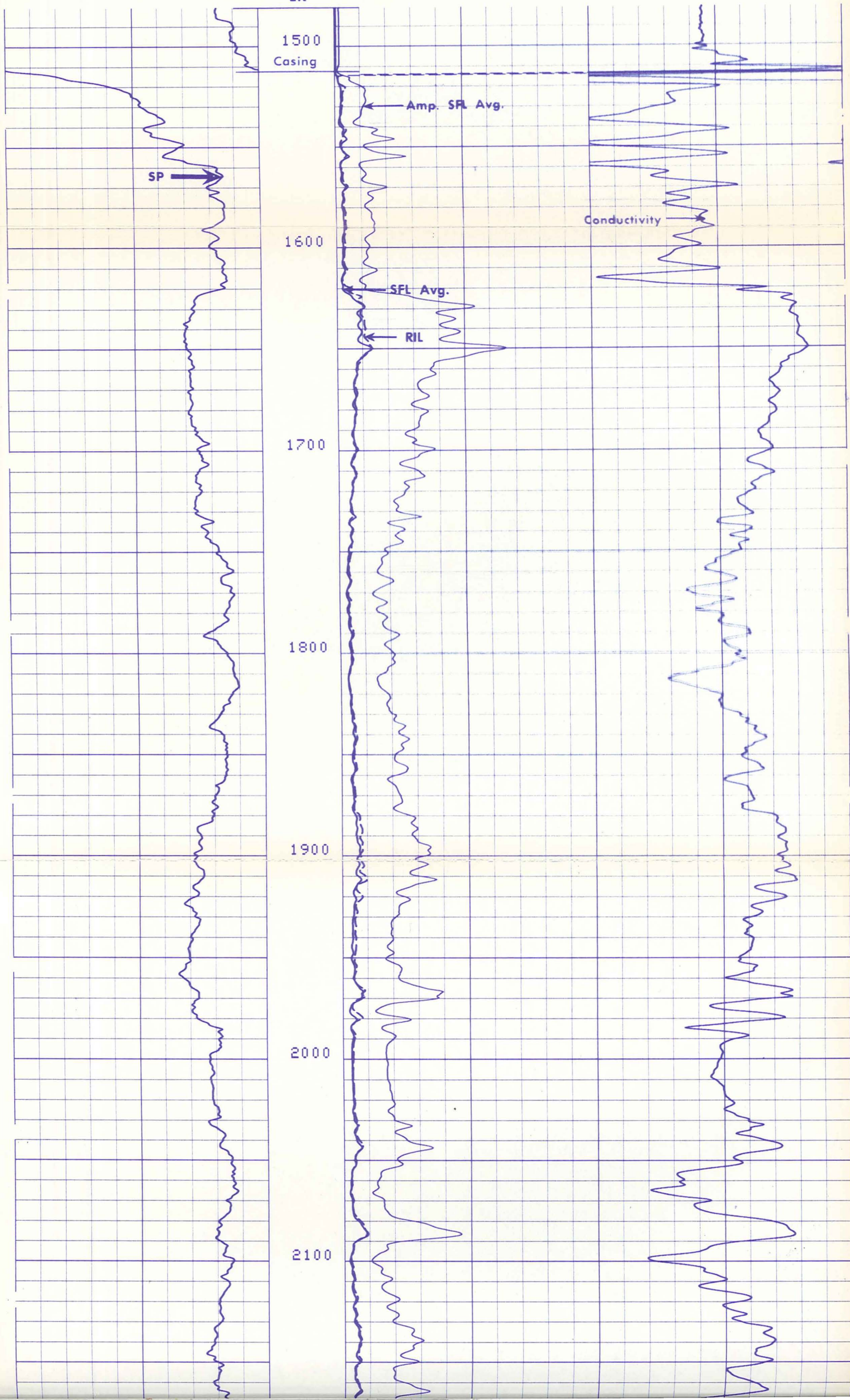
SP (MV)
-100.0 0.0

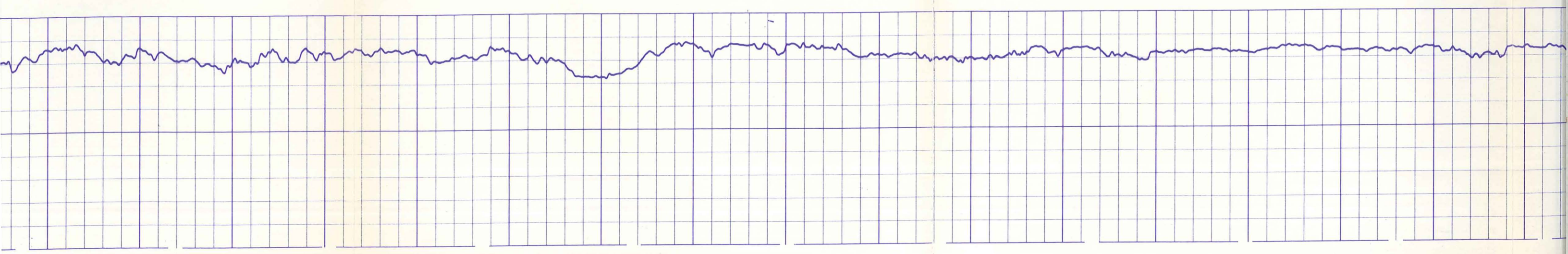
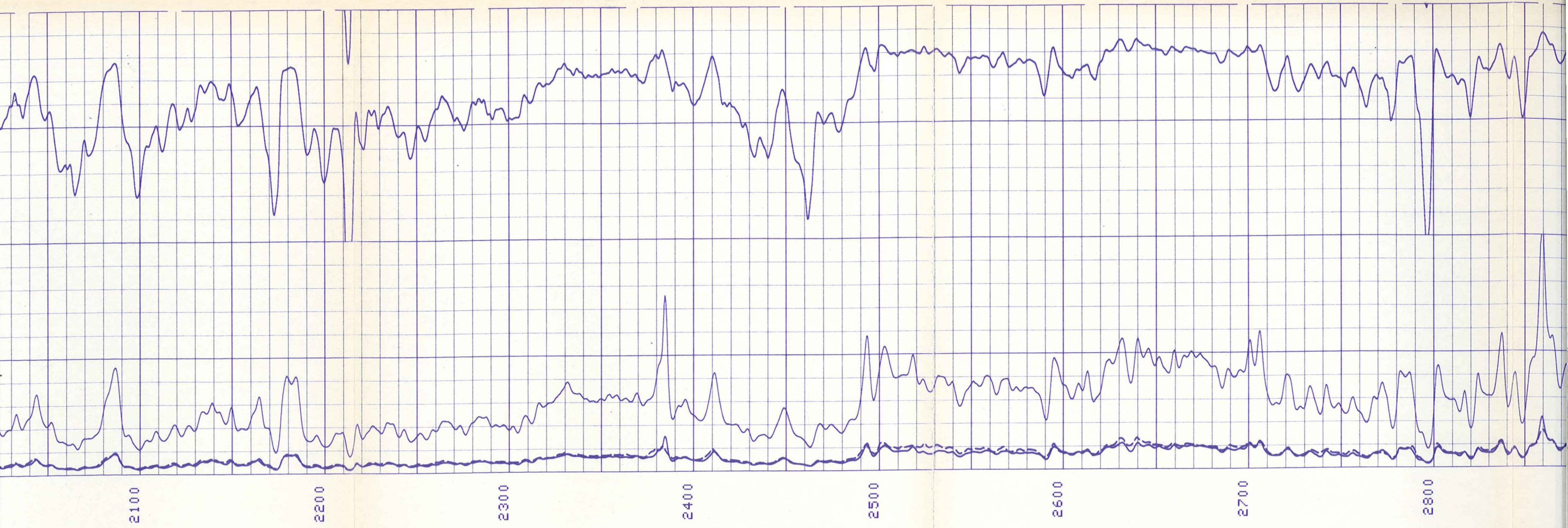
SFLA(OHMM) 20.00
0.0 SFLA(OHMM) 100.0

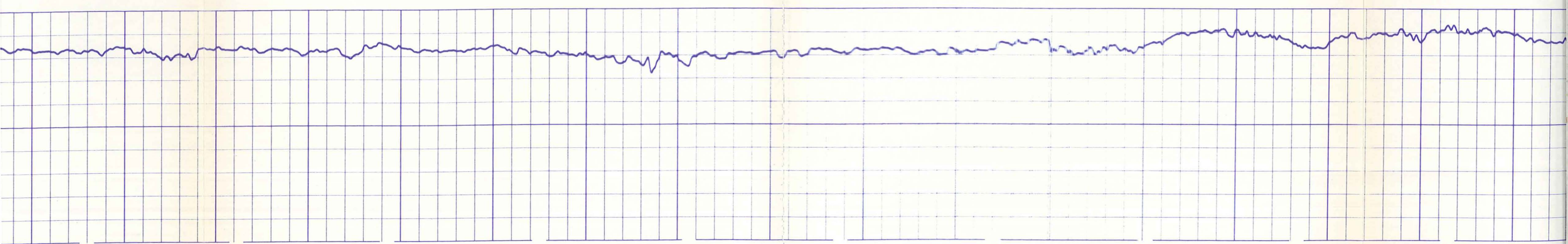
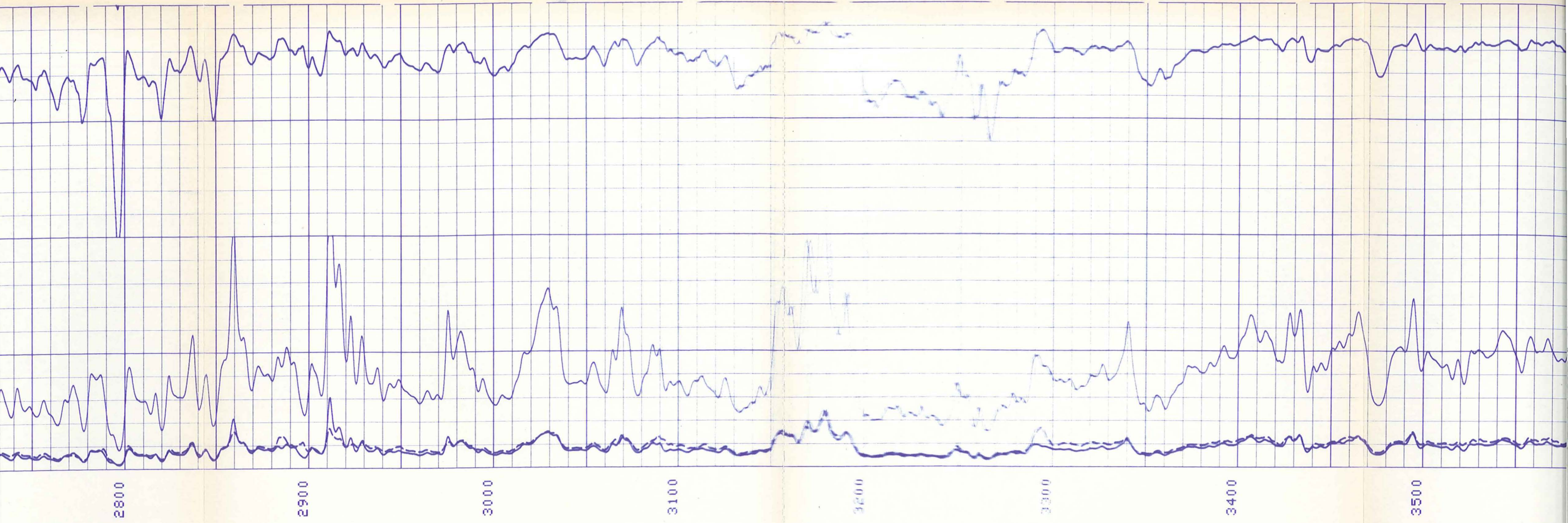
CILD(MM/M) 500.0 0.0

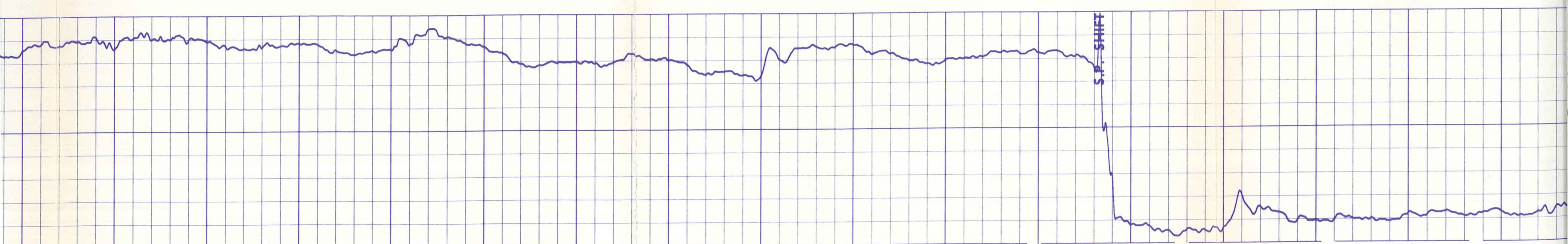
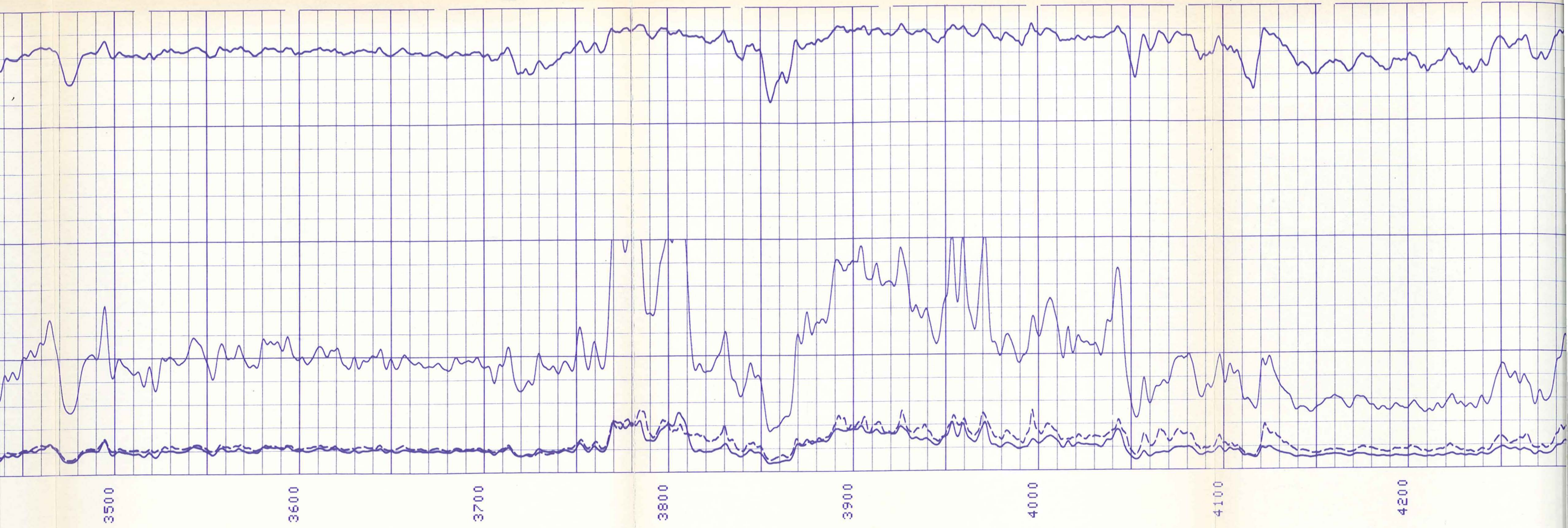
17
17
17
17
17
17

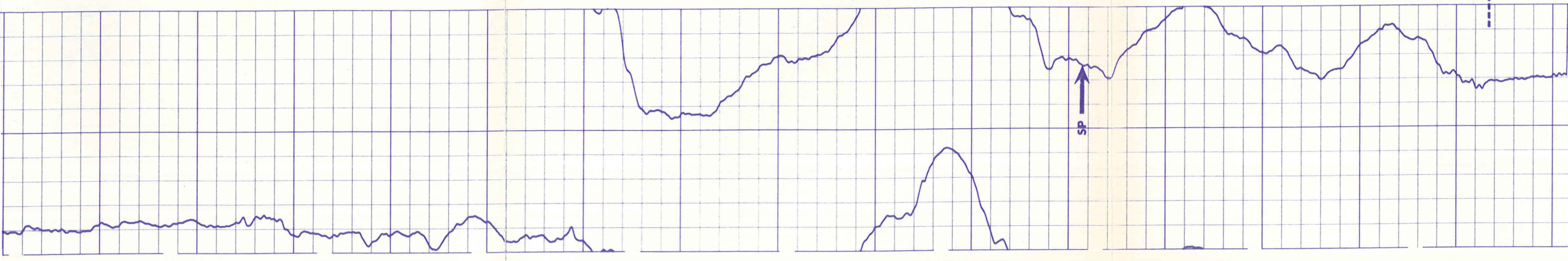
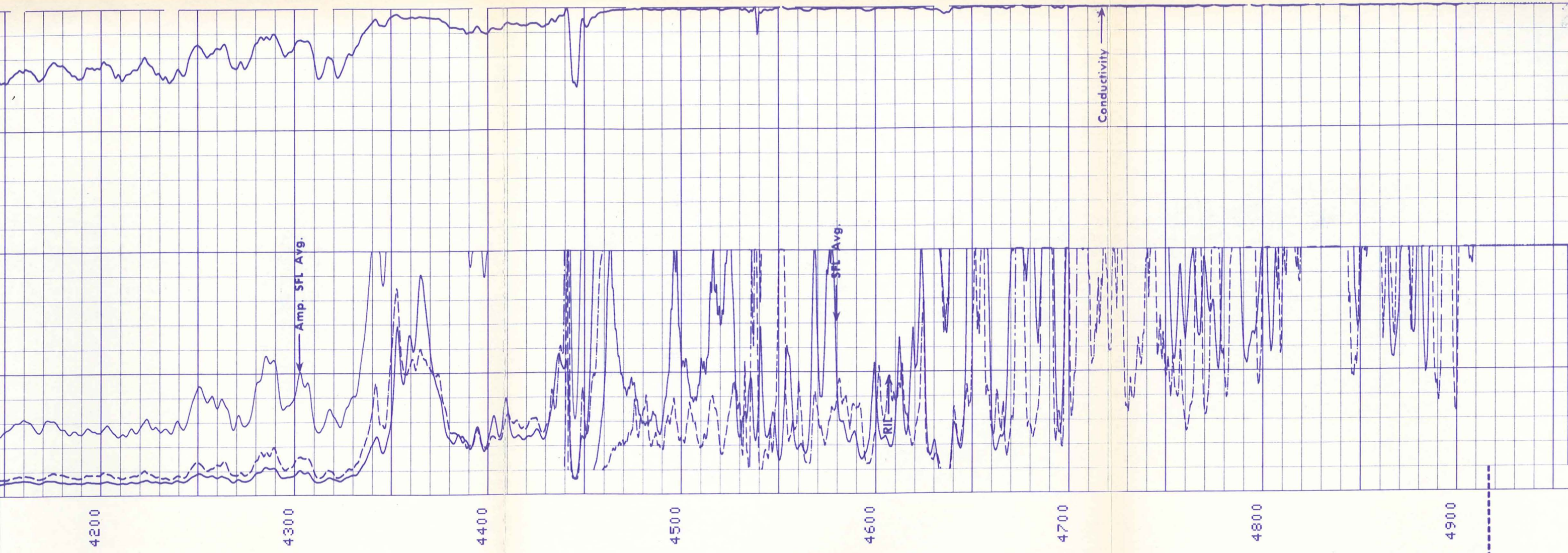
11
11
11
11
11
11
LR



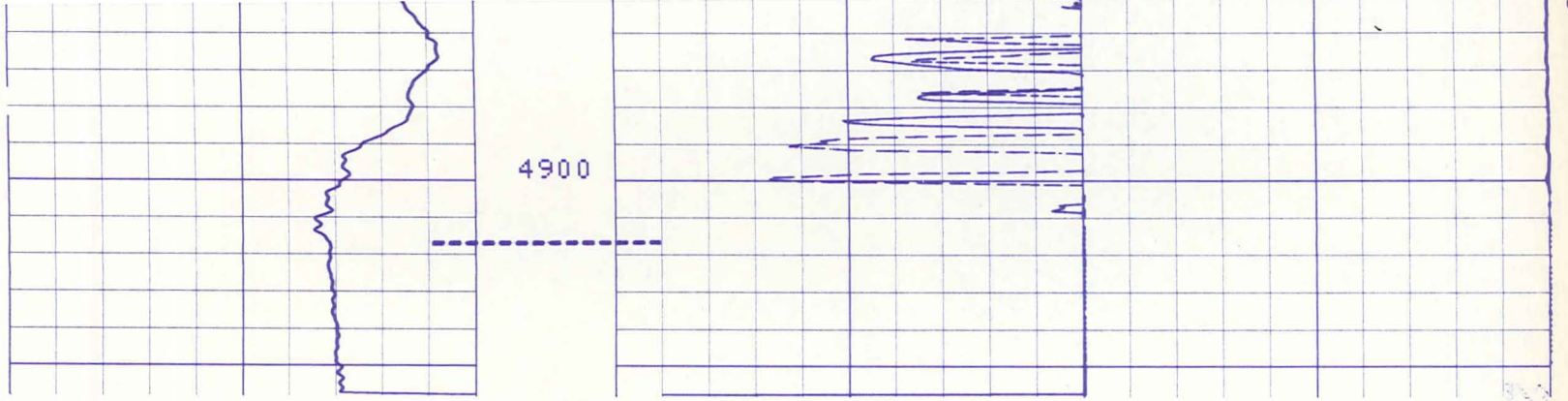






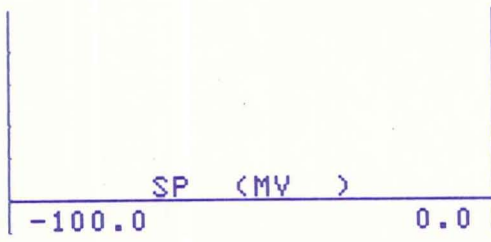


Conductivity



11
11
11
11
11
11
11
10

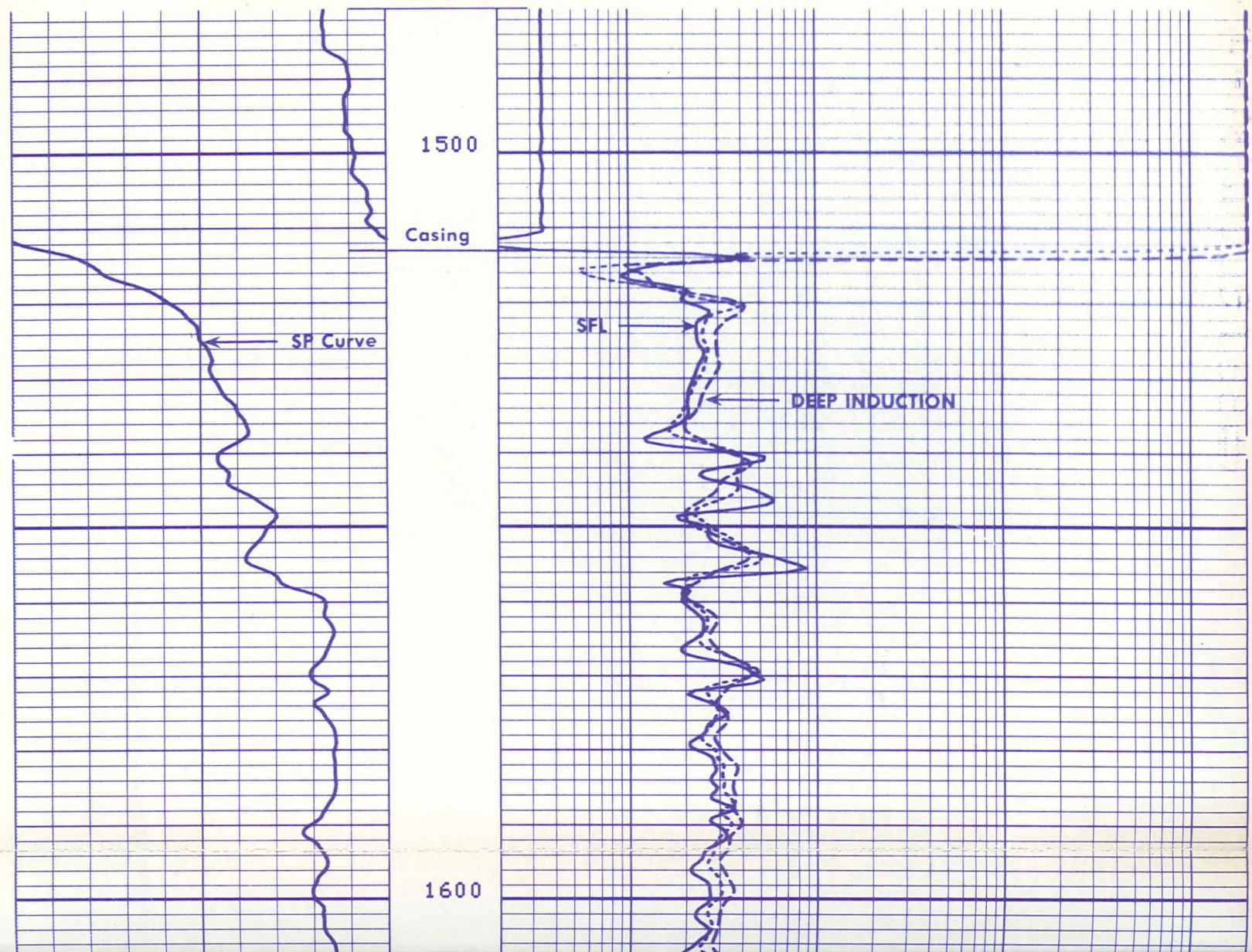
SP (MV) -100.0 0.0	ILD (OHMM)	0.0	100.0	CILD(MM/M) 500.0 0.0
	SFLA(OHMM)	0.0	20.00	
	SFLA(OHMM)	0.0	100.0	

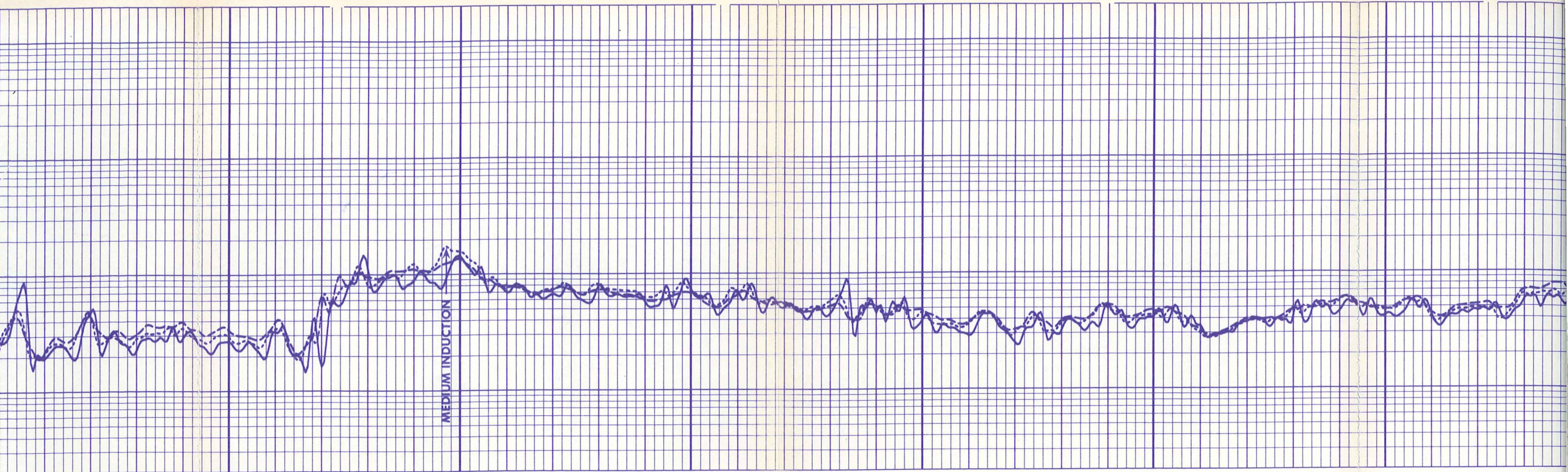


ILD (OHMM)	0.2000	2000.
ILM (OHMM)	0.2000	2000.
SFLU(OHMM)	0.2000	2000.

17
17
17
17
17
17

11
11
11
11
11
11
LR

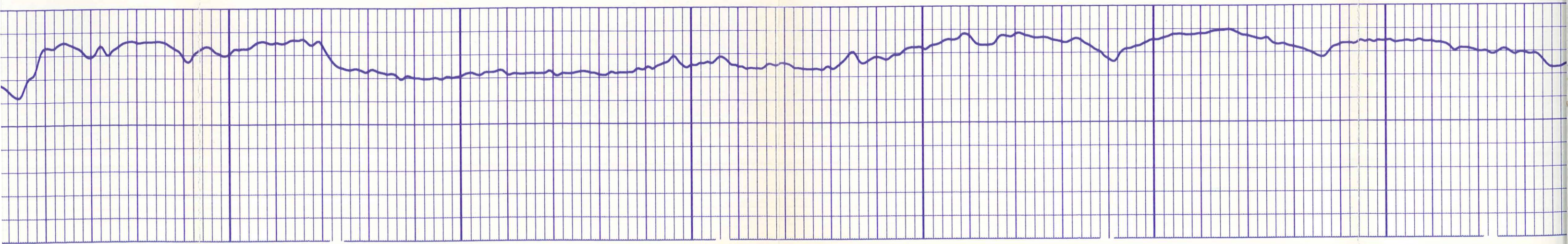


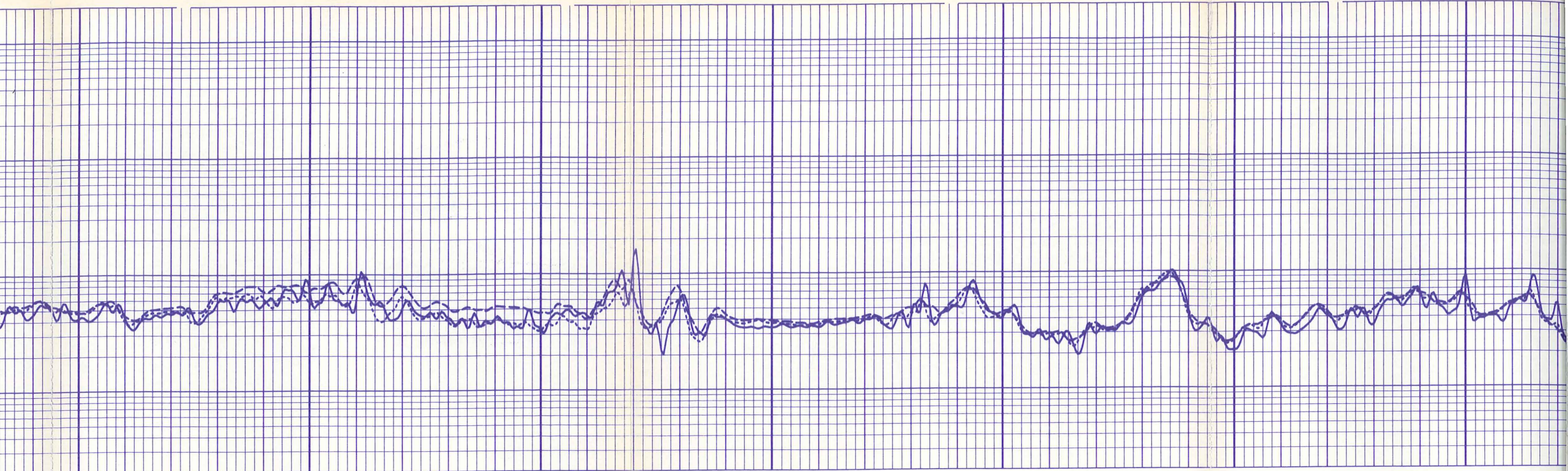


1600

1700

1800

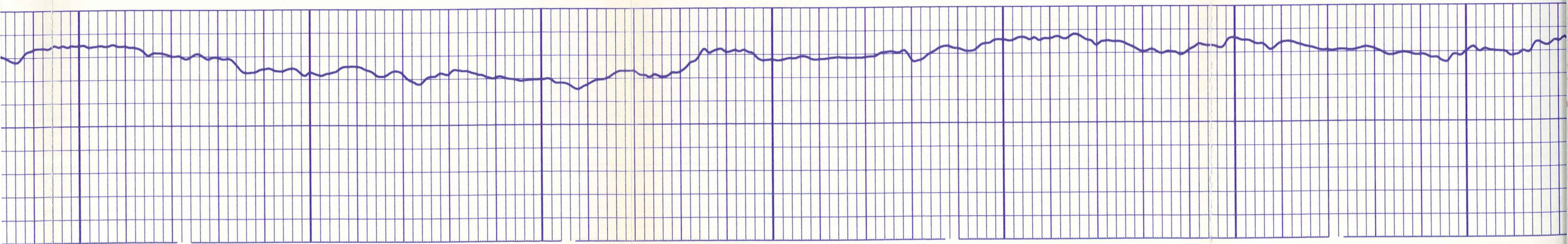


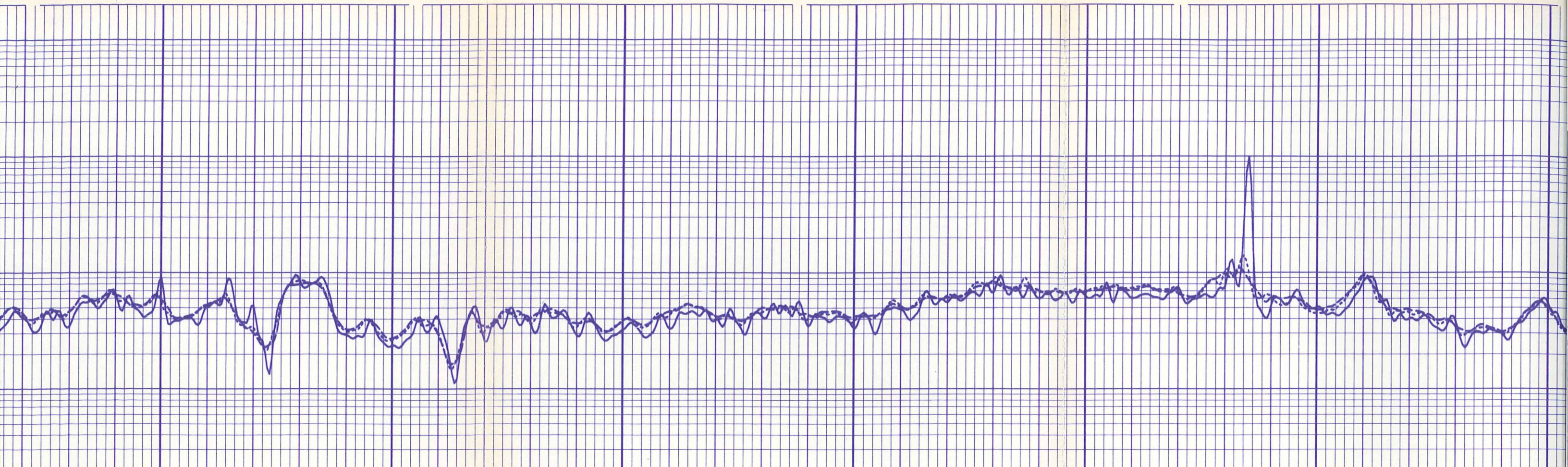


1900

2000

2100

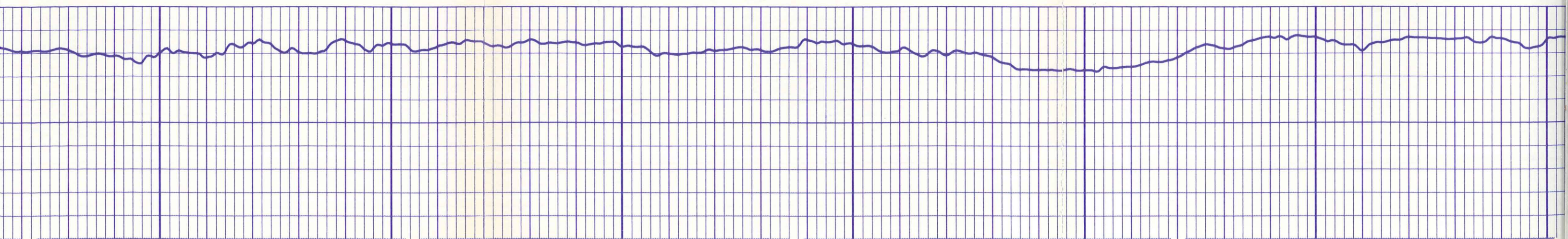


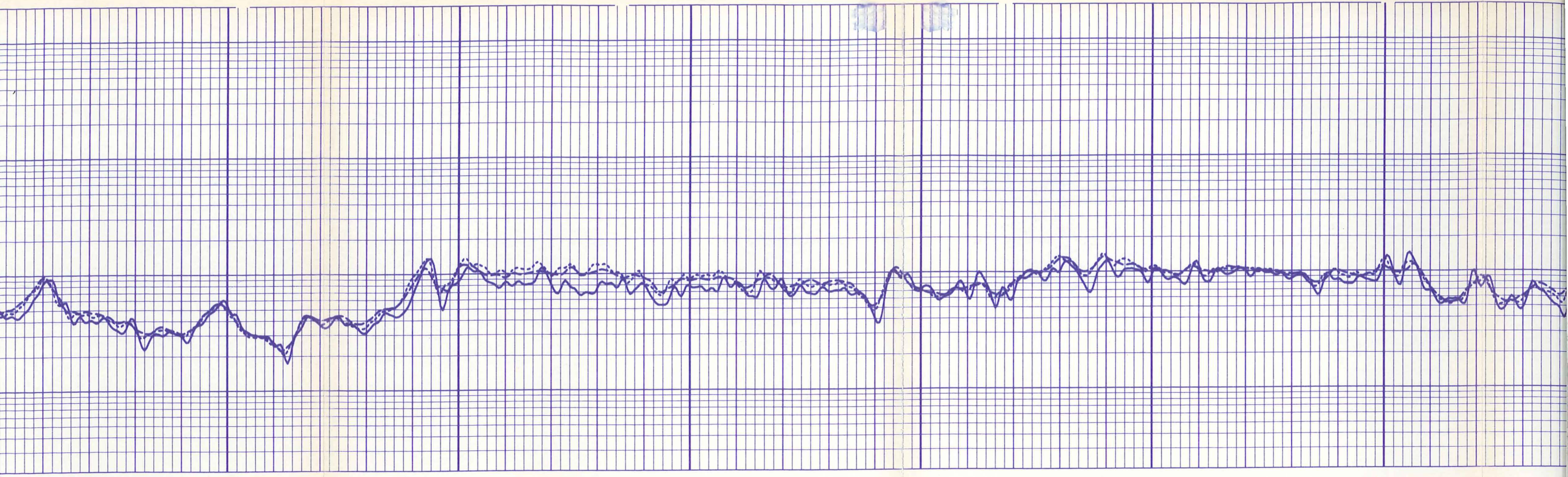


2200

2300

2400

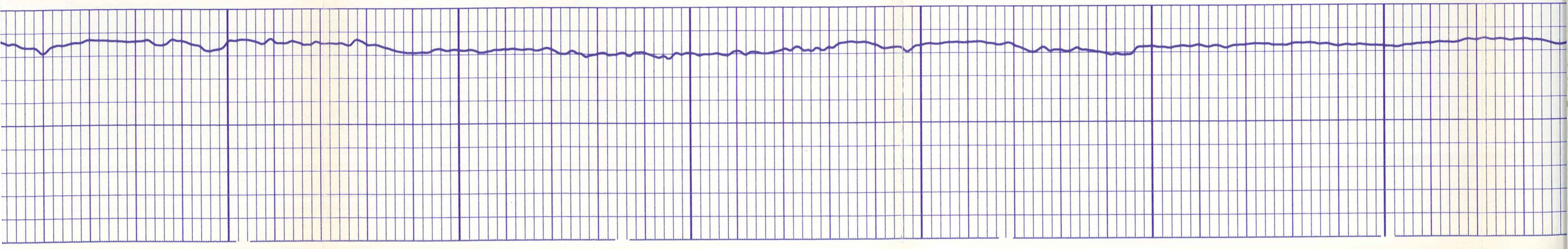


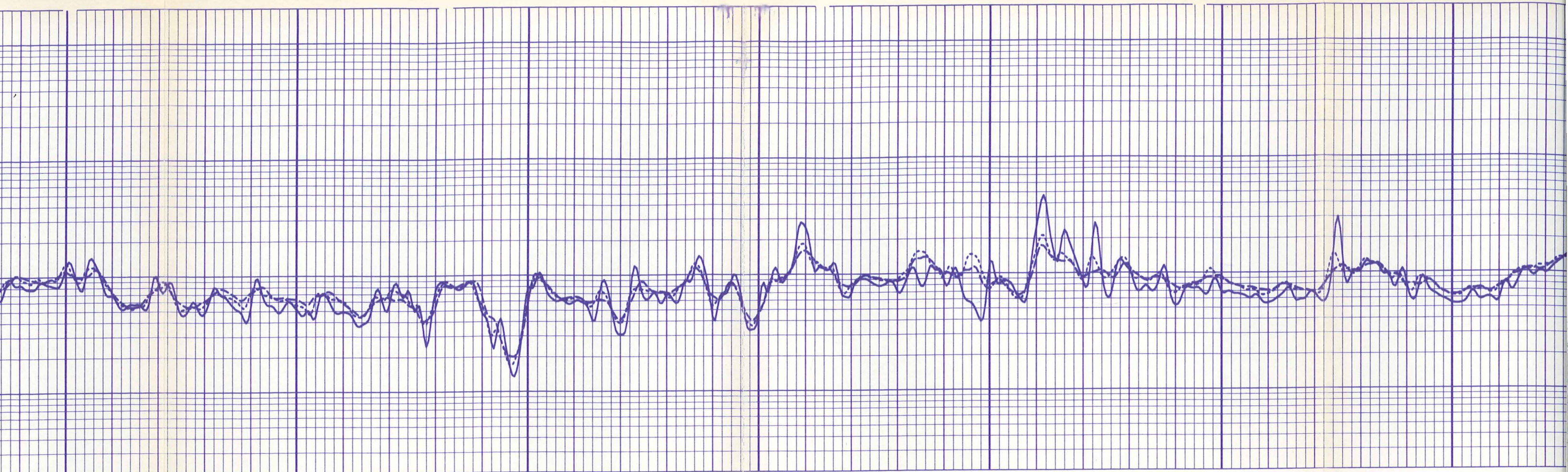


2500

2600

2700



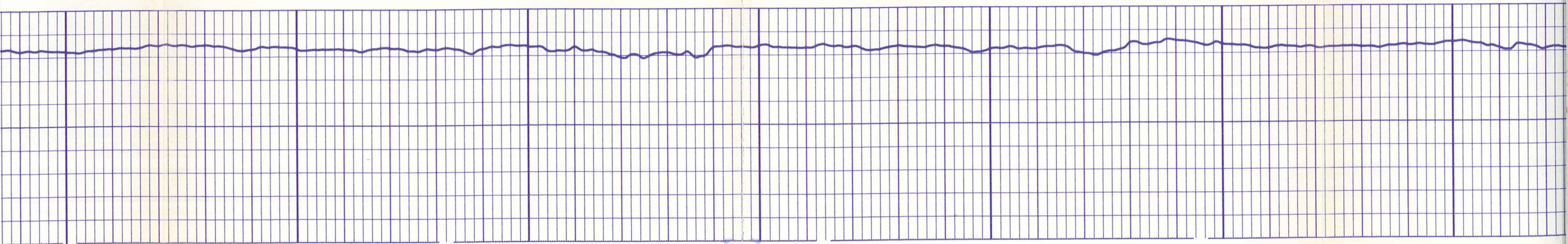


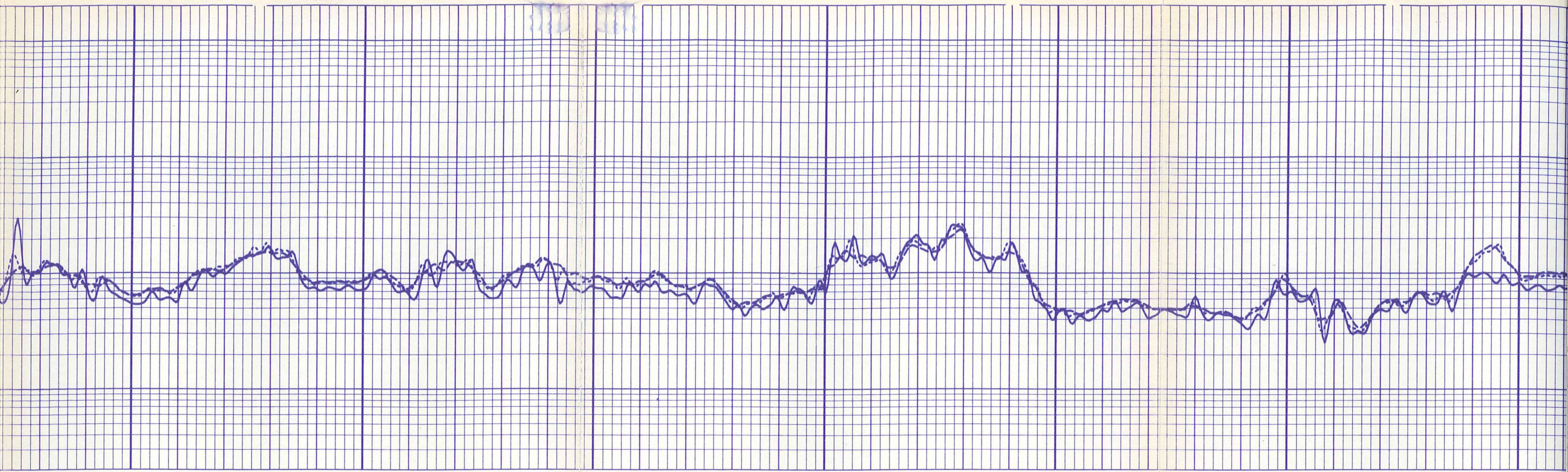
2700

2800

2900

3000



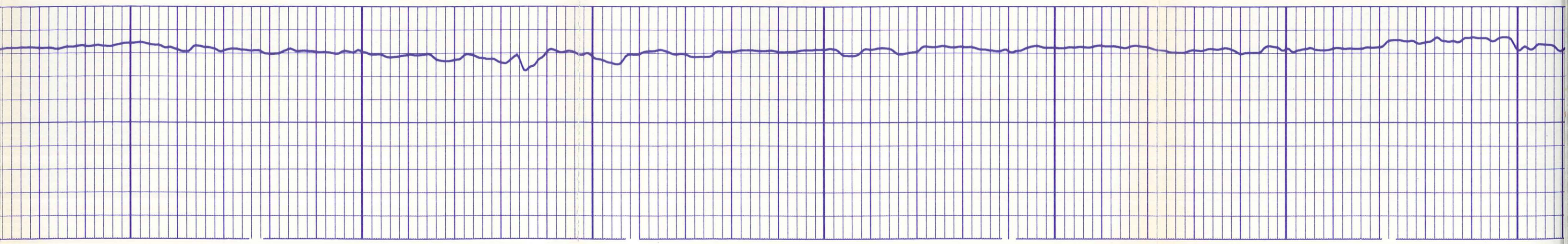


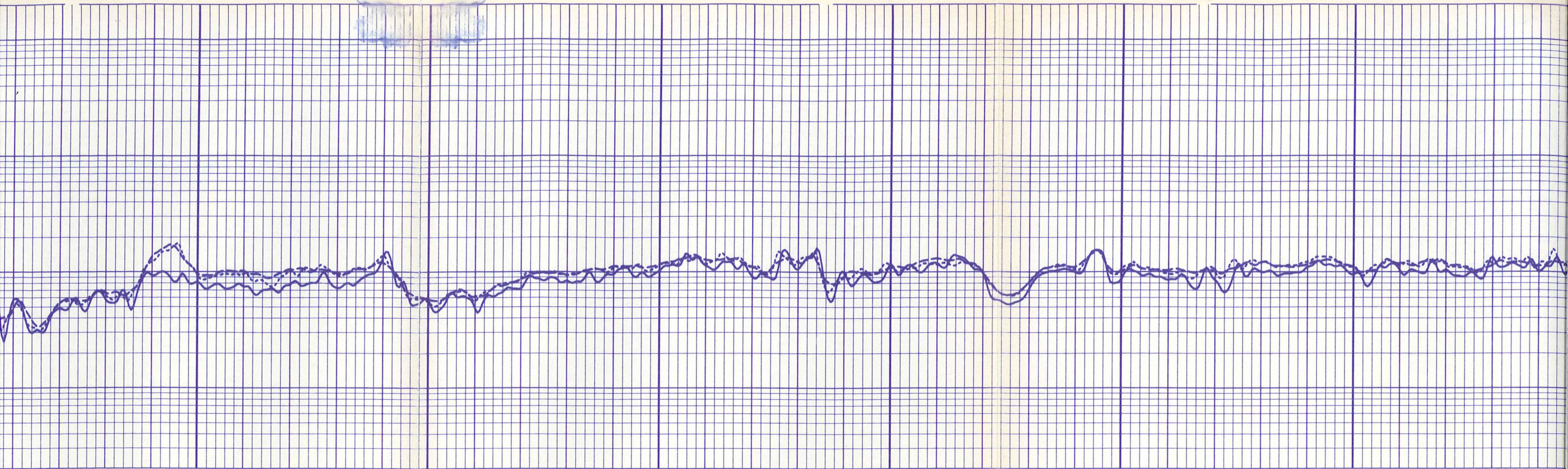
3000

3100

3200

3300



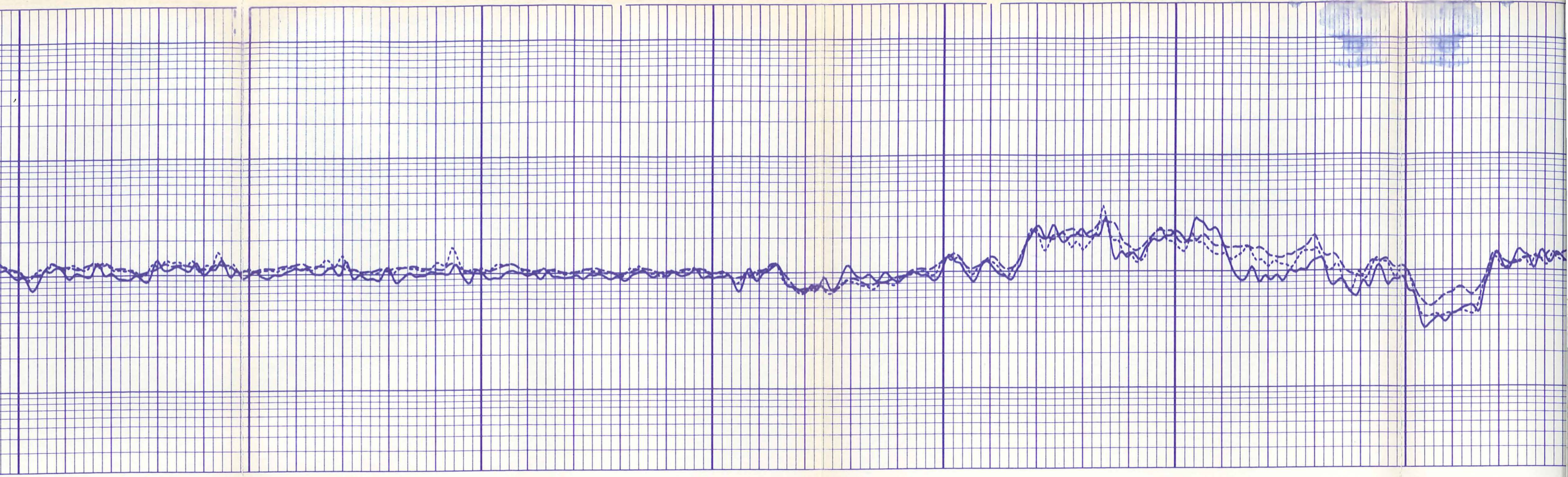


3300

3400

3500

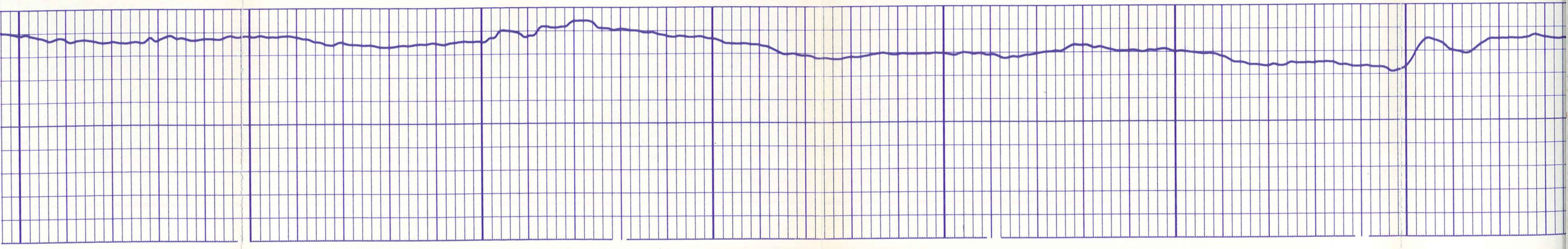


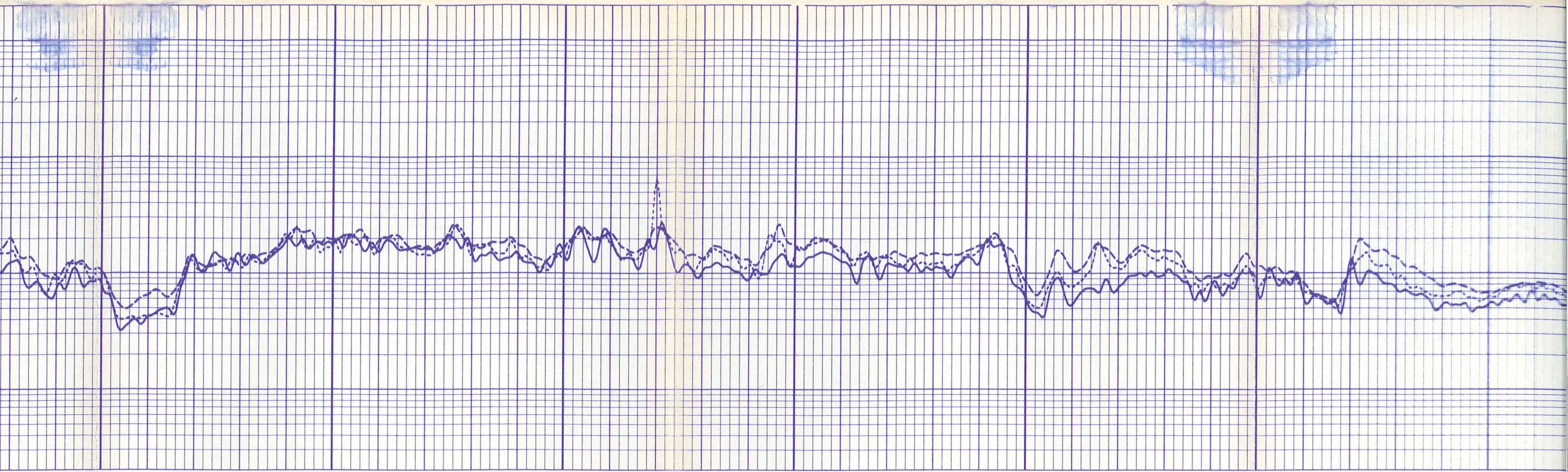


3600

3700

3800

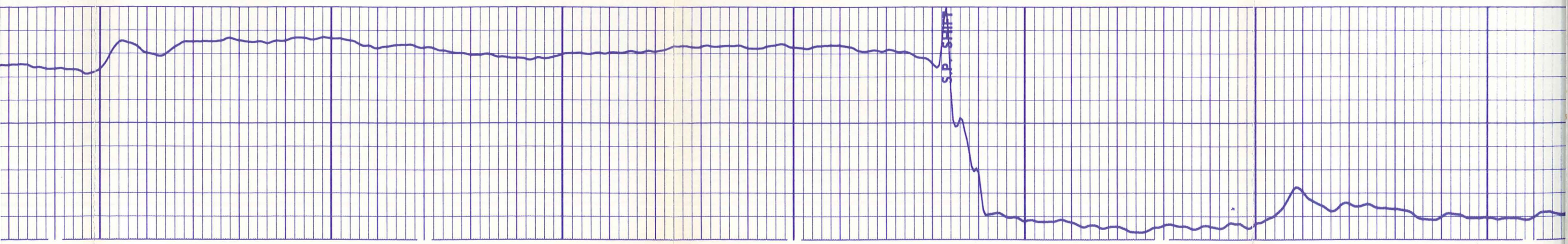




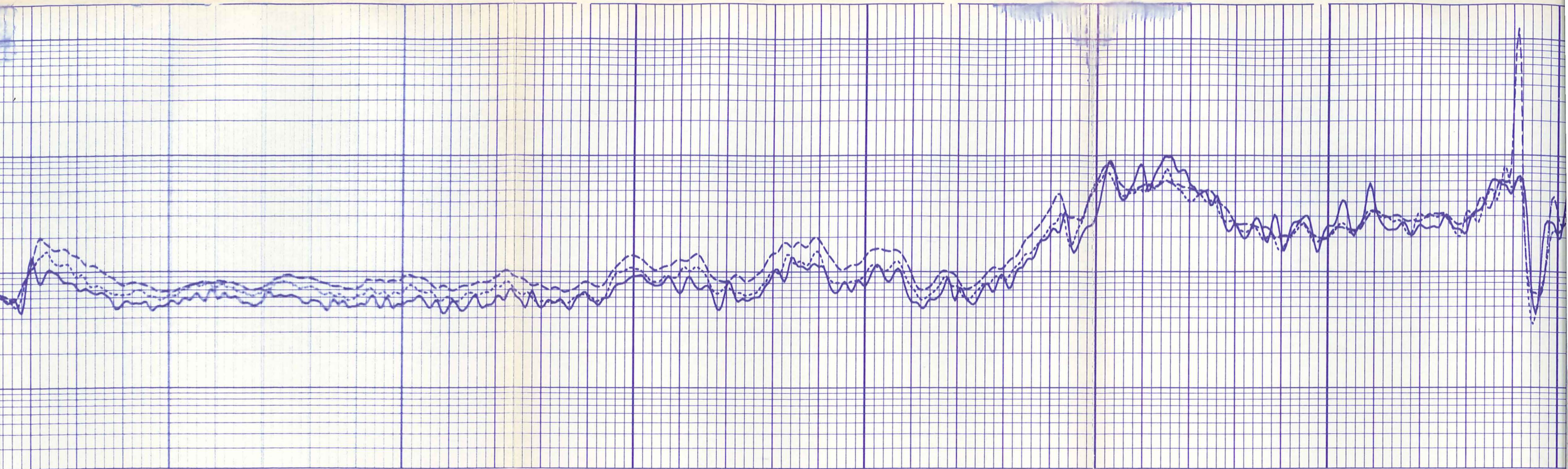
3900

4000

4100



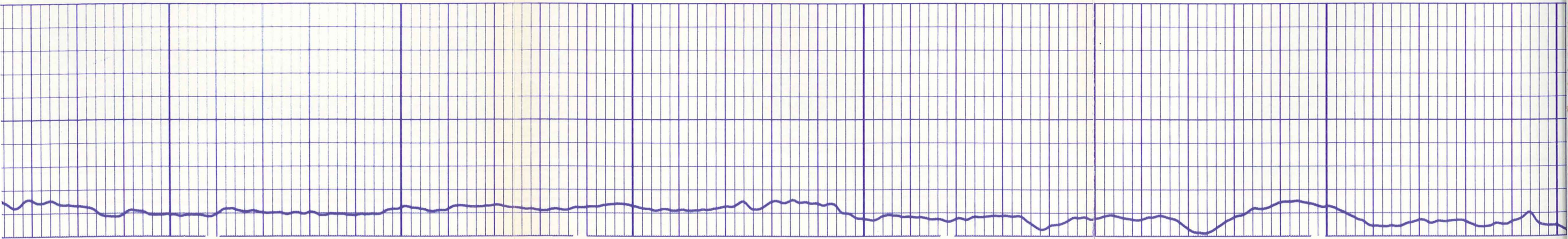
S.P. SHIRT

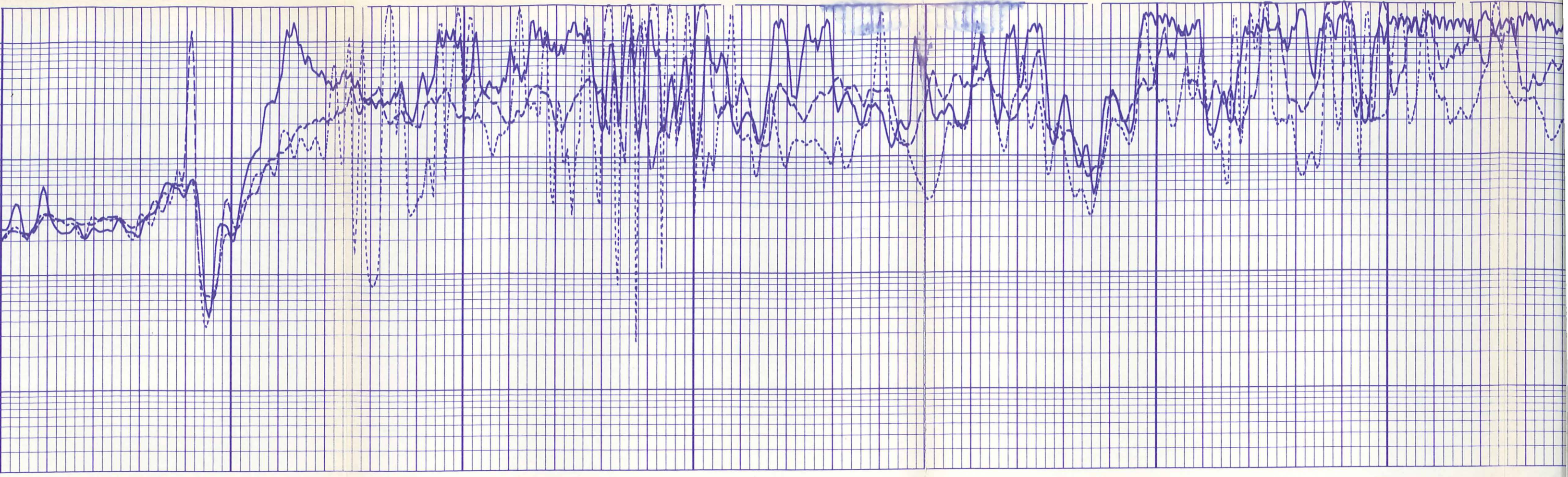


4200

4300

4400



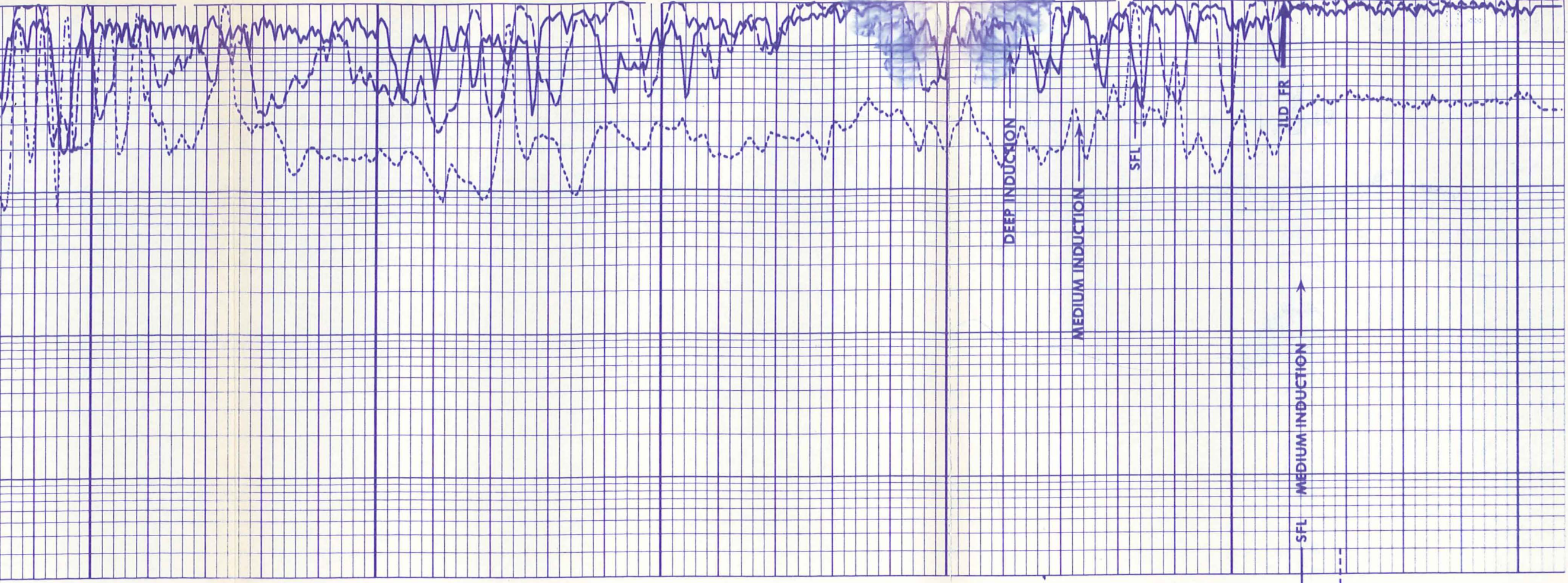


4500

4600

4700





4700

4800

4900

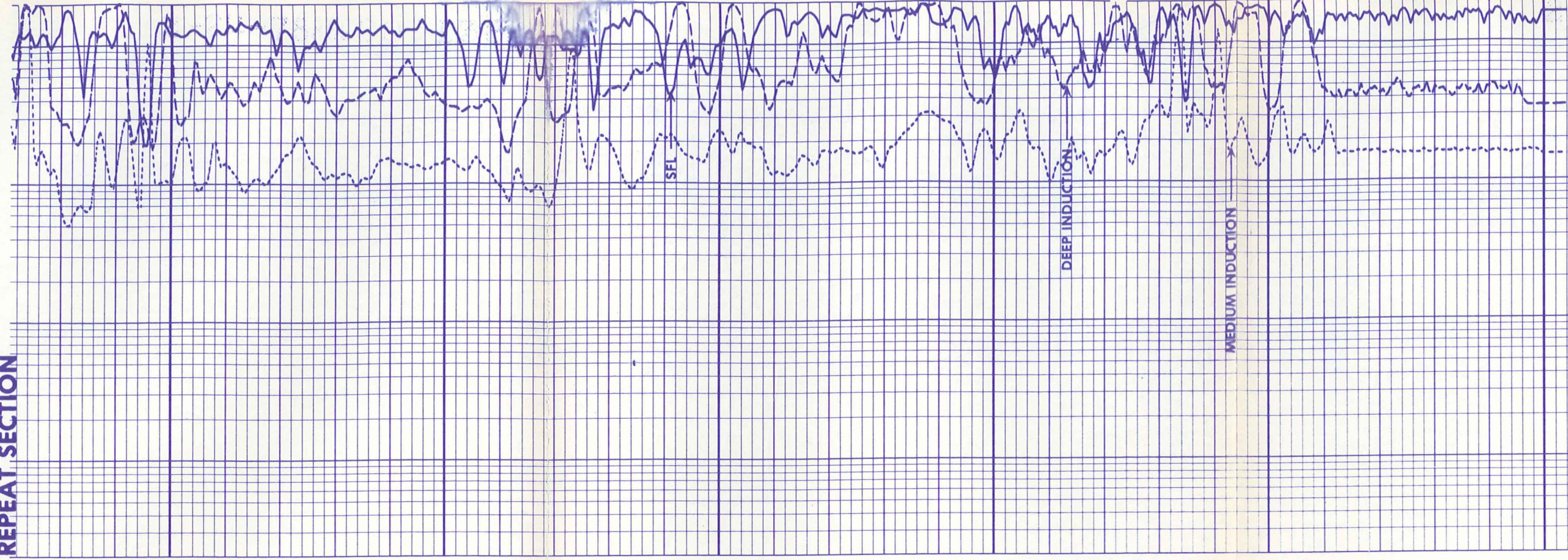
FR



11
11
11
11
11
11
11
10
10
10
10
10
10

REPEAT SECTION

REPEAT SECTION



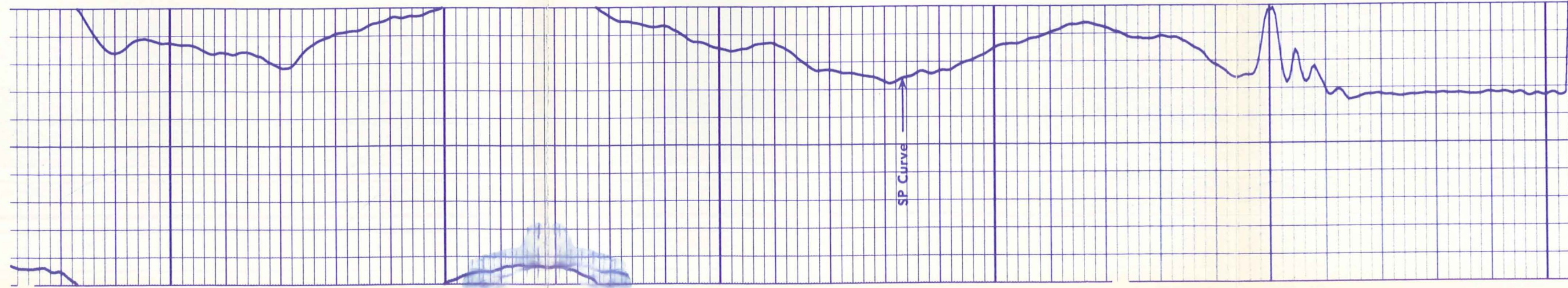
4700

4800

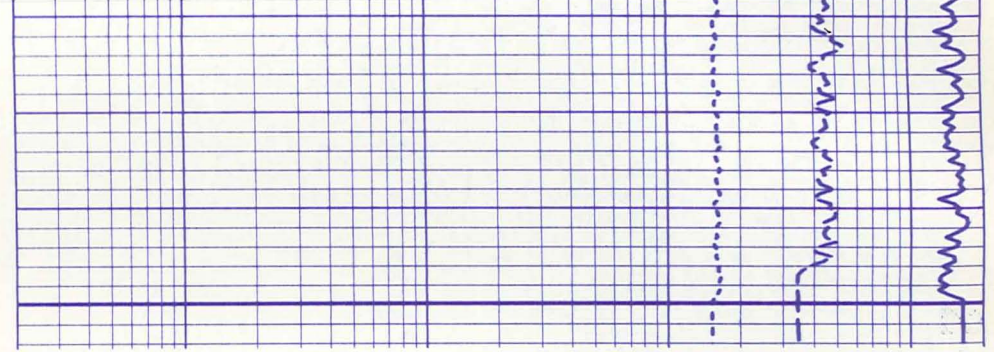
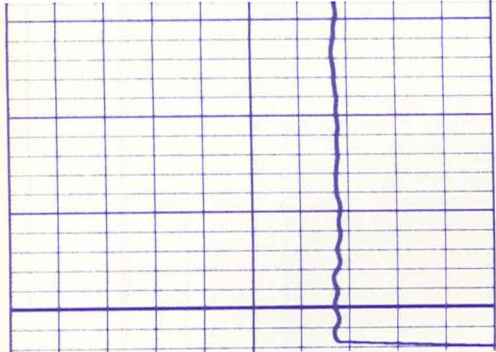
4900

11
11
11
11
10
10
10
10
10
10

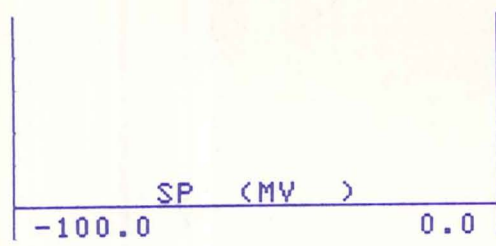
10
10
10
10
10
10



SP Curve



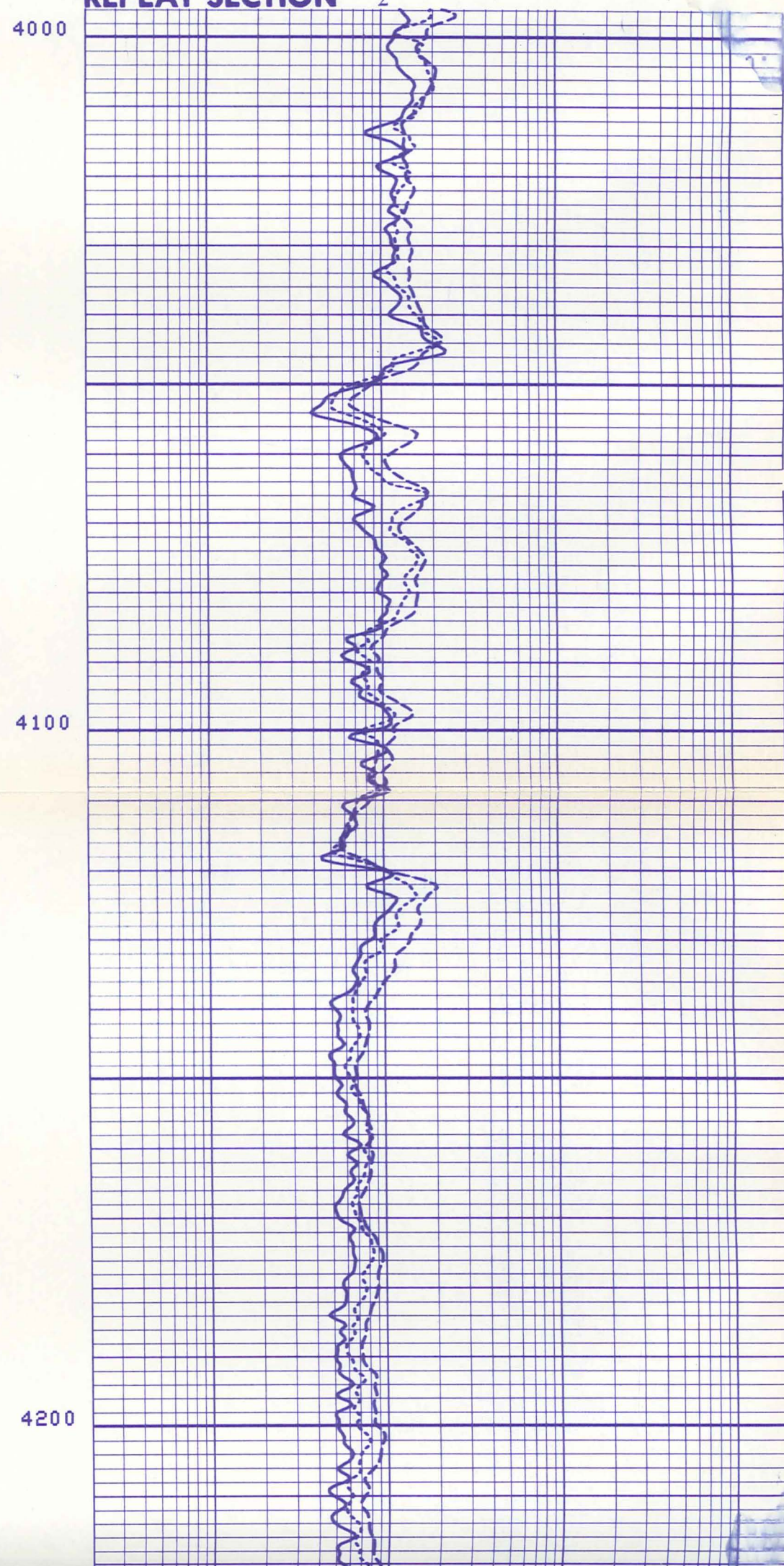
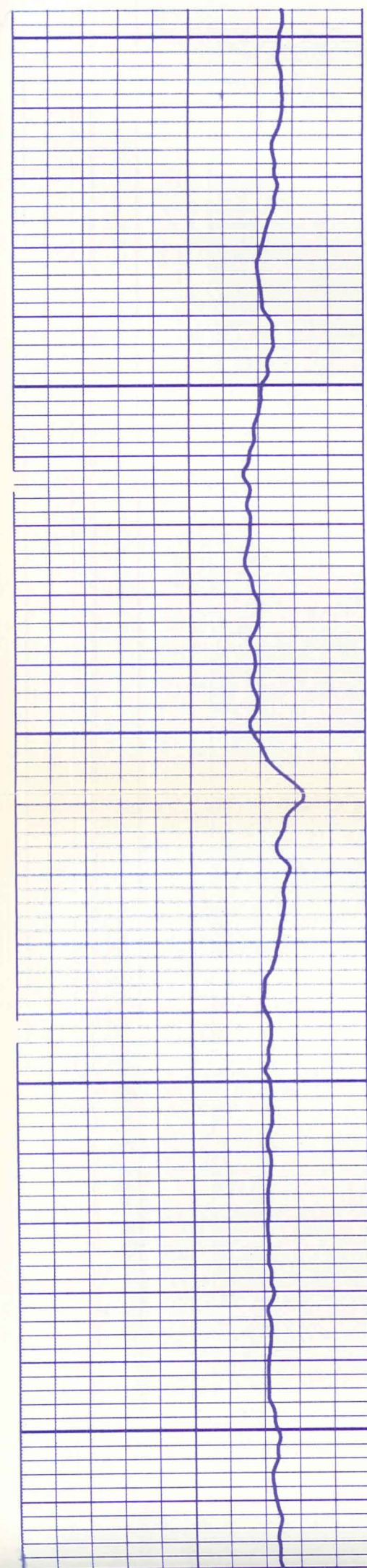
10
10
10
10
10
10



0.2000	ILD (OHMM)	2000.
0.2000	ILM (OHMM)	2000.
0.2000	SFLU(OHMM)	2000.

16
16
16
13
13
13
13

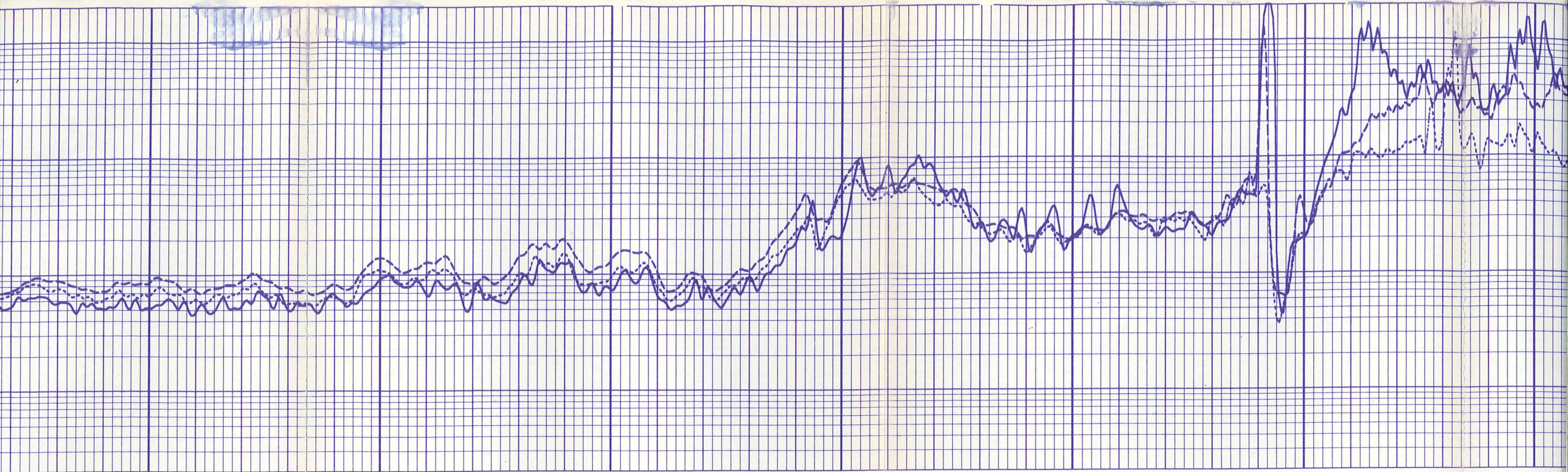
REPEAT SECTION 2



4000

4100

4200

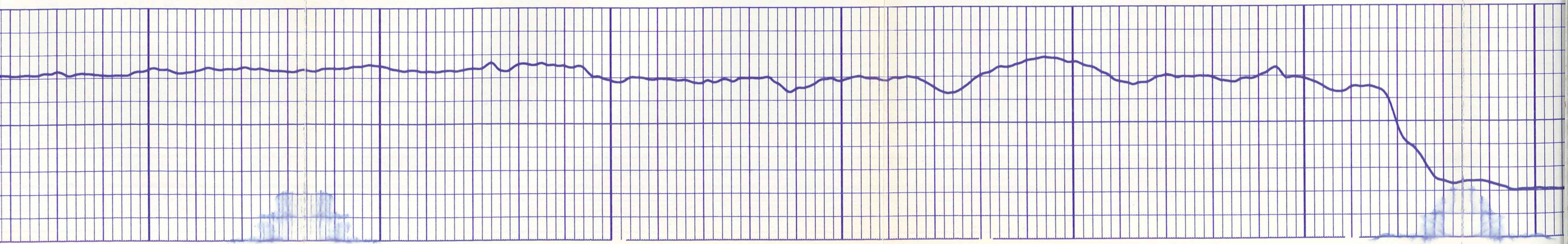


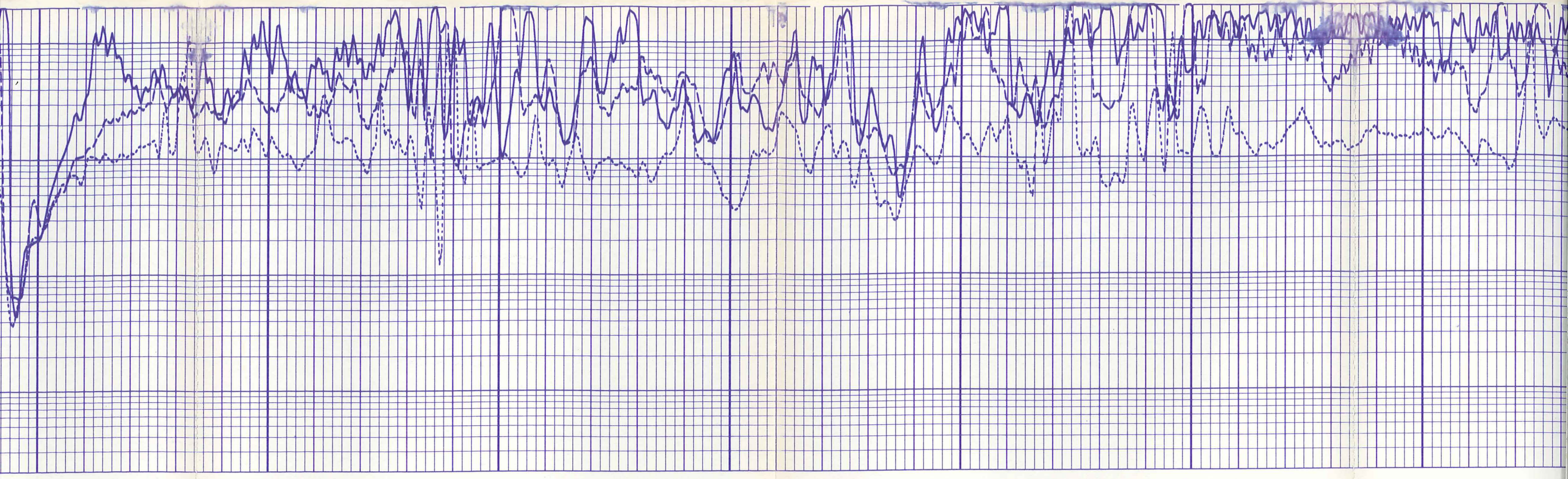
4200

4300

4400

4500



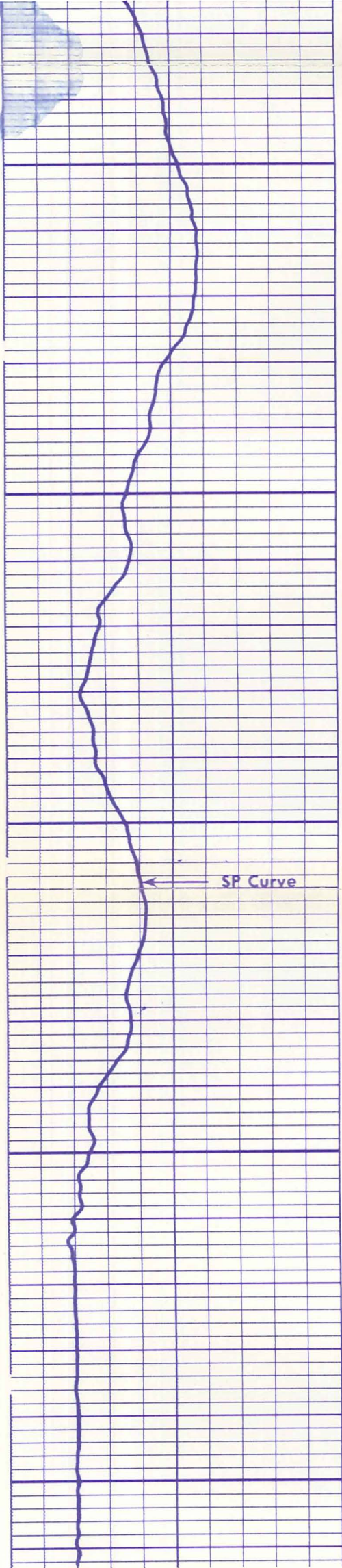


4500

4600

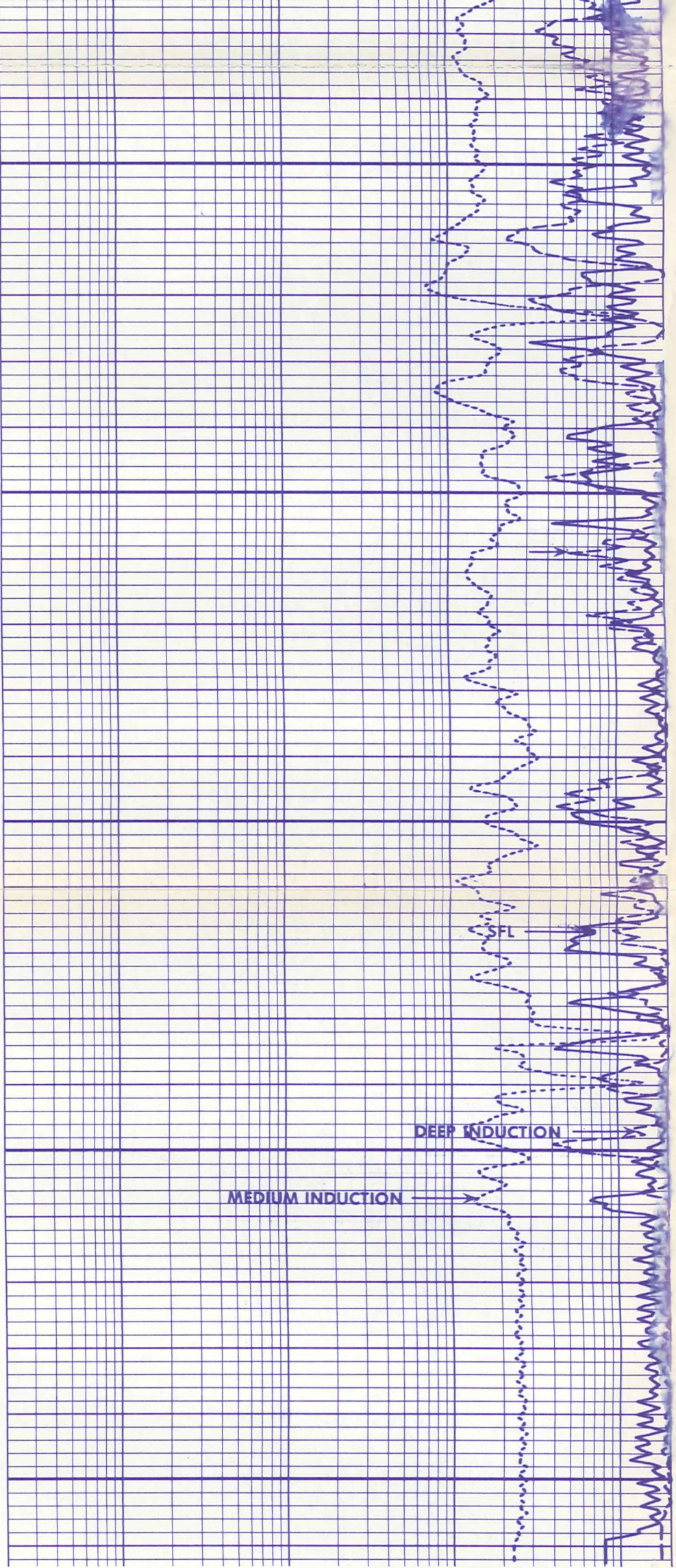
4700





4800

4900



13
13
13
13
13
13
13

SP (MV)	
-100.0	0.0

ILD (OHMM)	2000
ILM (OHMM)	2000
SFLU(OHMM)	2000

17
17
17
17
17
17

16
16
16

16
16
16

BEFORE SURVEY CALIBRATION SUMMARY

PERFORMED: 78/07/07
PROGRAM FILE: IS (VERSION 10.51 78/ 5/12)

DITD ELECTRONICS CALIBRATION SUMMARY

	MEASURED		CALIBRATED		UNITS
	ZERO	PLUS	ZERO	PLUS	
ILD	3.0	498.9	0.0	499.8	MM/M
ILM	2.5	412.7	0.0	499.9	MM/M
SFL	-0.5	535.0	0.0	499.9	MM/M
ILM	SONDE ERROR CORRECTION :		6.3	MM/M	
ILD	SONDE ERROR CORRECTION :		5.6	MM/M	

16
16
16
16
16
16

AFTER SURVEY TOOL CHECK SUMMARY

PERFORMED: 78/07/07
PROGRAM FILE: IS (VERSION 10.51 78/ 5/12)

DITD TOOL CHECK

	ZERO		PLUS		UNITS
	BEFORE	AFTER	BEFORE	AFTER	
ILD	0.0	0.0	499.8	505.5	MM/M
ILM	0.0	0.2	499.9	479.6	MM/M
SFL	0.0	0.0	499.9	495.7	MM/M
ILM	SONDE ERROR CORRECTION :		6.3	MM/M	
ILD	SONDE ERROR CORRECTION :		5.6	MM/M	

↑
CALIBRATION RECORD

COMPANY	E. G. & G.	SCHL. FR	4916
WELL	RRGP #5	SCHL. TD	4919
FIELD	RAFT RIVER	DRLR. TD	4911
COUNTY	CASSIA	STATE	IDAHO
		Elev:	KB 5002
		DF	
		GL	4988