

GL02661

Schlumberger

FULL BORE SPINNER

COMPANY E G & G IDAHO, INC.

WELL RRG# 5

FIELD RAFT RIVER

COUNTY CASSIA STATE IDAHO

LOCATION NE, SW

Other Services:

DIL/GR
BHC/GR/TTI
HRT, ICS
FDC/CNL/GR

API SERIAL NO. SEC. TWP RANGE
22 15S 26E

Permanent Datum: GL; Elev. 4988
Log Measured From KB 16 Ft. Above Perm. Datum
Drilling Measured From KB

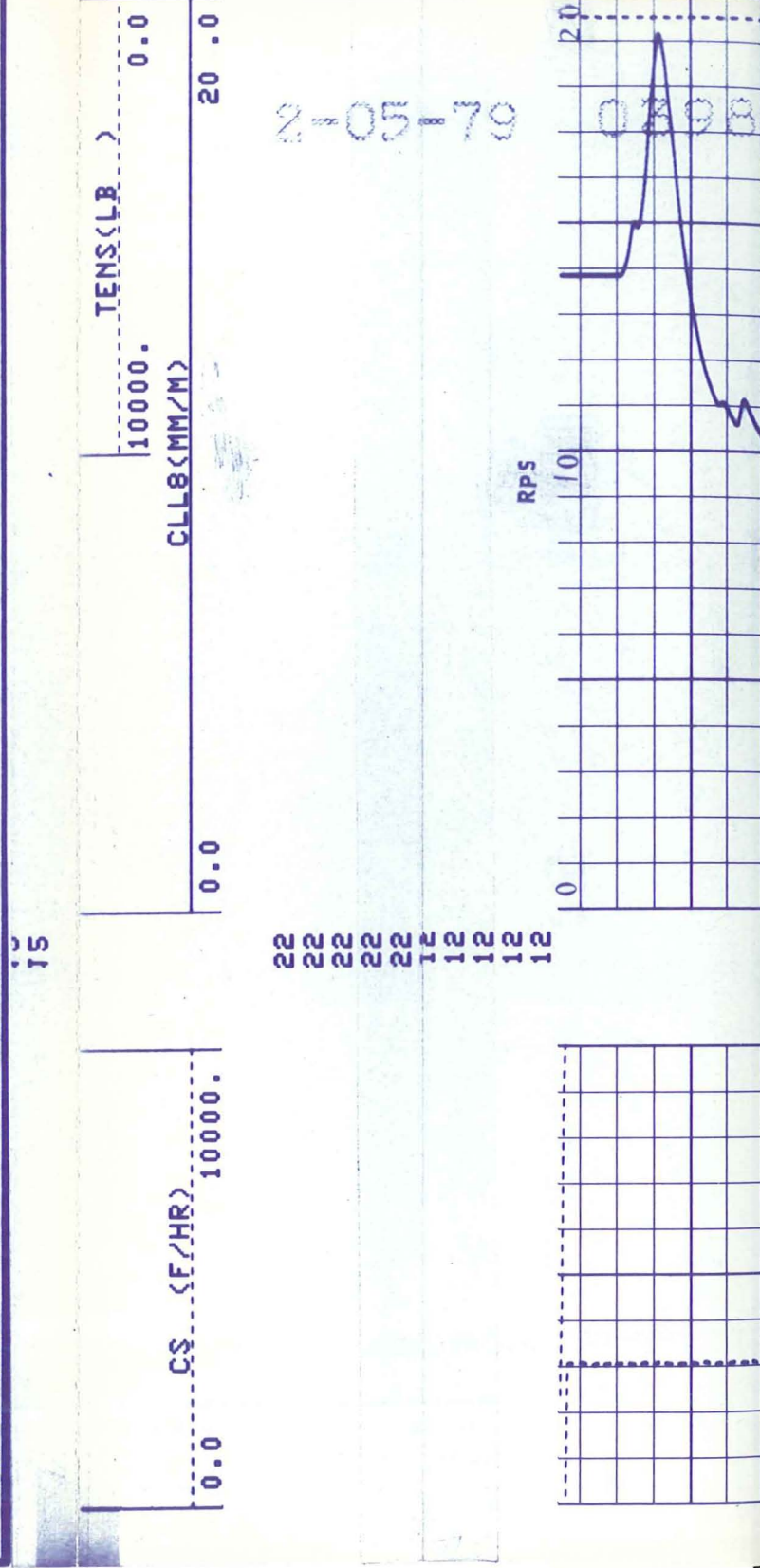
Elev.: K.B. 5044
D.F. 4988
G.I. 4988

| | |
|----------------------|---------------------------|
| Date | 9/14/78 |
| Run No. | 0 |
| Depth-Driller | 4925 |
| Depth-Logger (Schl.) | 4936 |
| Btm. Log Interval | 4936 |
| Top Log Interval | 3380 |
| Casing-Driller | 95/8 @ 3408 @ @ @ |
| Casing-Logger | 3417 |
| Bit Size | 8.75 |
| Type Fluid in Hole | FORMATION WATER (FLOWING) |
| Dens. | NA |
| Visc. | NA |
| pH | NA |
| Fluid Loss | NA ml ml ml ml |
| Source of Sample | FLOWLINE |
| Rm @ Meas. Temp. | @ °F @ °F @ °F @ °F |
| Rmf @ Meas. Temp. | @ °F @ °F @ °F @ °F |
| Rmc @ Meas. Temp. | @ °F @ °F @ °F @ °F |
| Source: Rmf | |
| Rmc | |
| Rm @ BHT | @ °F @ °F @ °F @ °F |
| TIME | |
| Circulation Stopped | 9/13@ 0700 |
| Logger on Bottom | 9/14@ 2200 |
| Max. Rec. Temp. | 272 °F °F °F °F |
| Equip. Location | 8060 EVSTN |
| Recorded By | ROONEY |
| Witnessed By Mr. | STEADHAM |

FOLD HERE The well name, location and borehole reference data were furnished by the customer.

| Run No. | Service Order No. | API Serial No. | Fluid Level | SCALE CHANGES | | REMARKS: |
|------------------|-------------------|----------------|-------------|---------------|-------|----------------|
| | | | | Type Log | Depth | |
| ONE | 39834 | | FULL | | | 2-05-79 039834 |
| EQUIPMENT DATA | | | | | | |
| CALIBRATION DATA | | | | | | |
| Speed - F.P.M. | | | | | | |
| GR | BKG. CPS | 120 | | | | |
| | Source CPS | | | | | |
| | Tc | | | | | |

All interpretations are opinions based on inferences from electrical or other measurements and we cannot, and do not guarantee the accuracy or correctness of any interpretations, and we shall not, except in the case of gross or willful negligence on our part, be liable or responsible for any loss, costs, damages or expenses incurred or sustained by anyone resulting from any interpretation made by any of our officers, agents or employees. These interpretations are also subject to Clause 4 of our General Terms and Conditions as set out in our current Price Schedule.



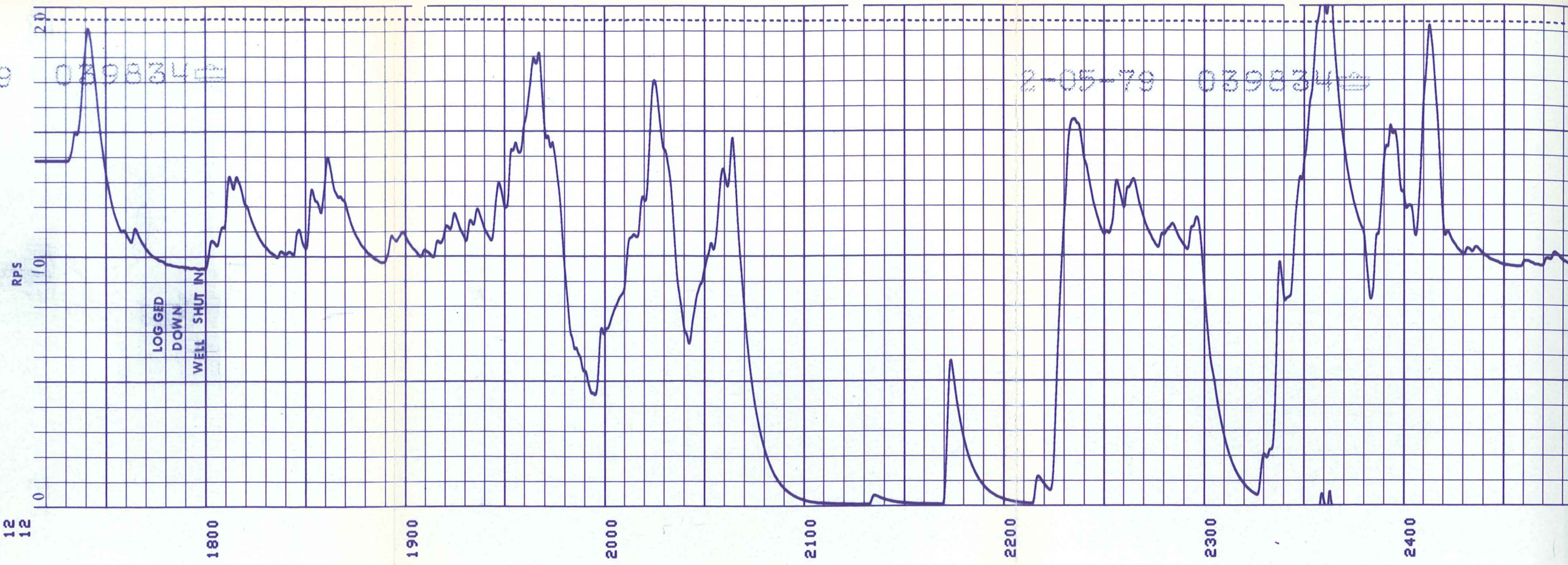
22 22 22 22 12 12 12 12

2-05-79

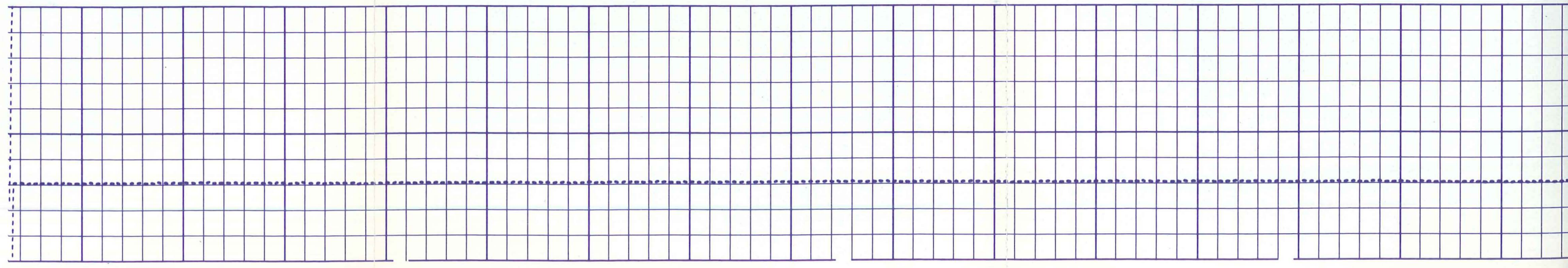
039834

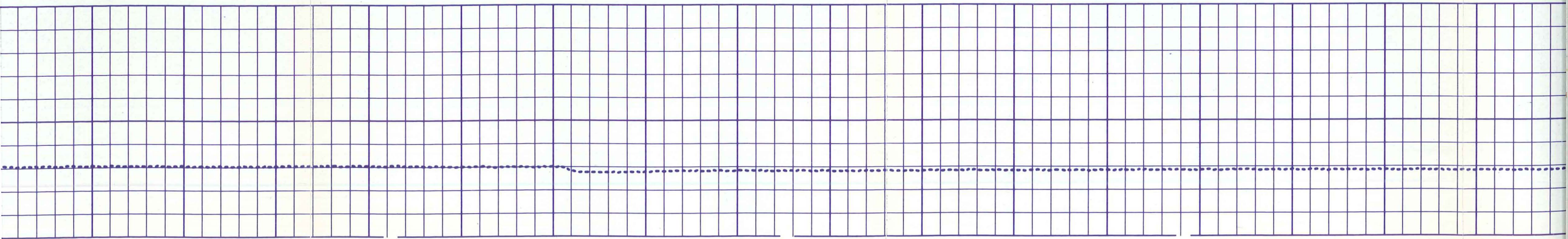
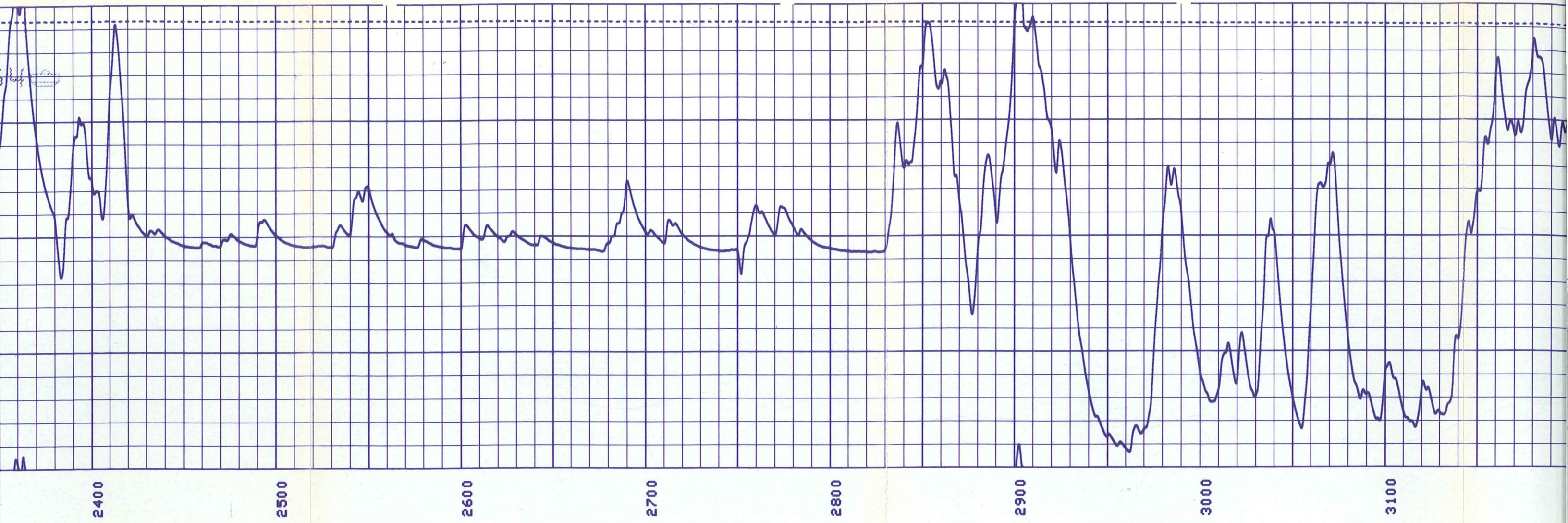
2-05-79

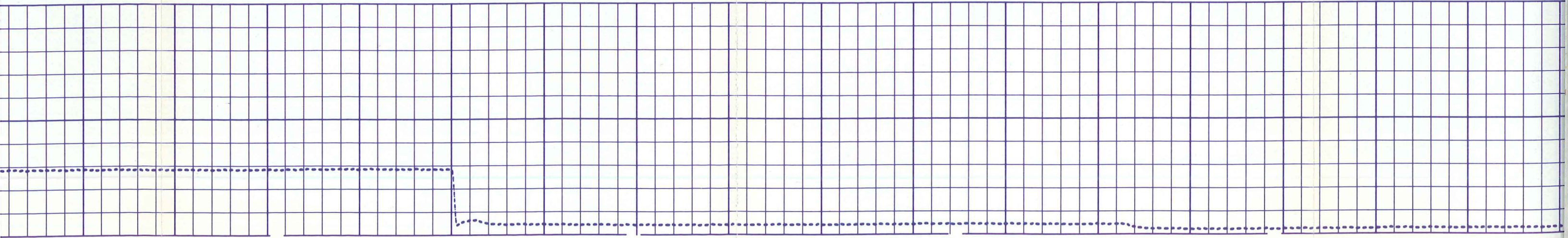
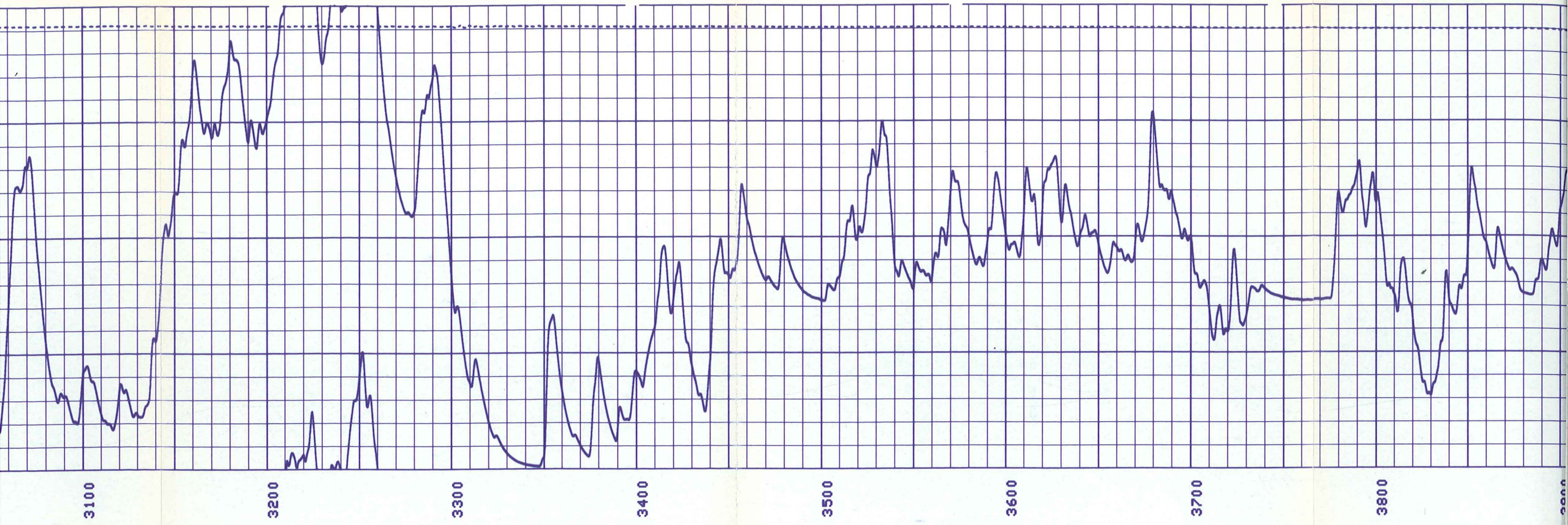
039834

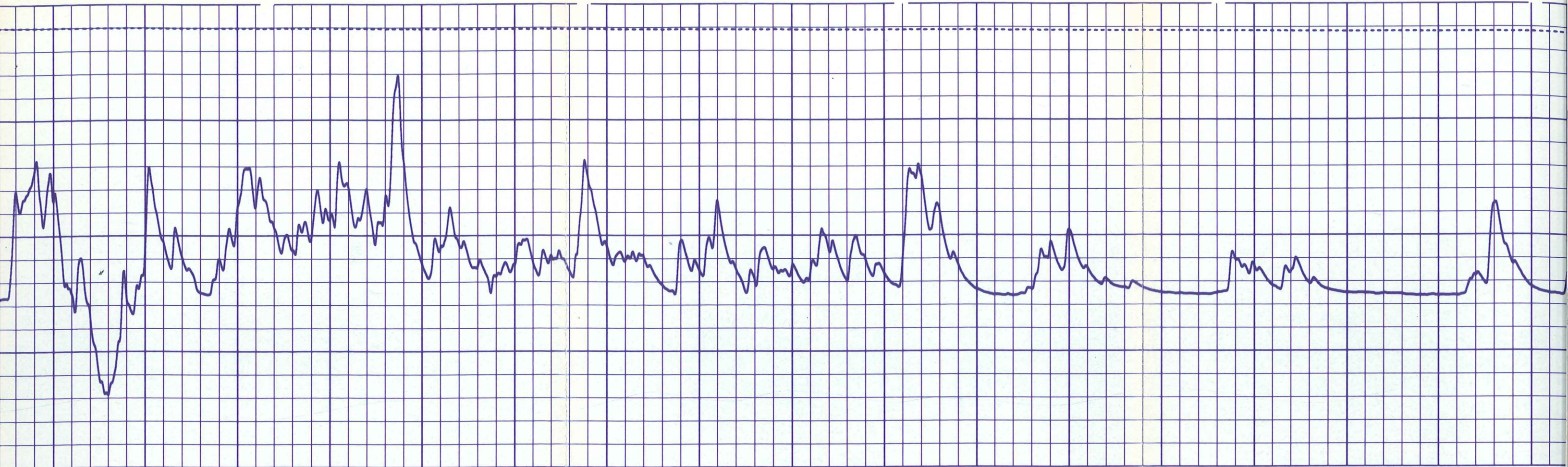


22
22
22
22
12
12
12
12









3800

3900

4000

4100

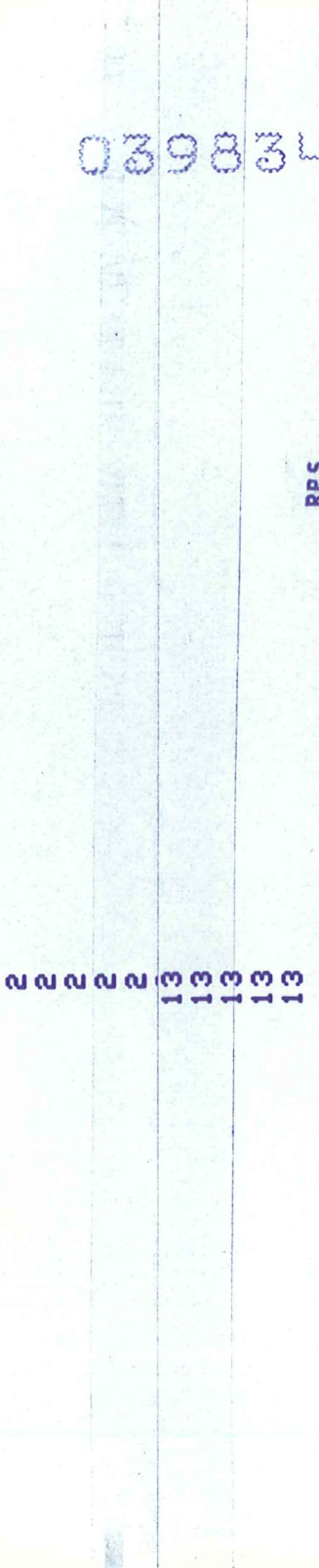
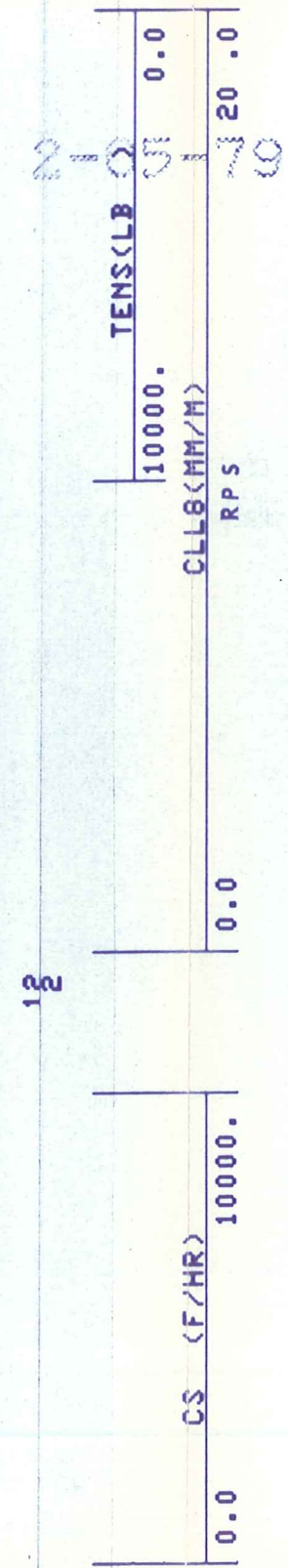
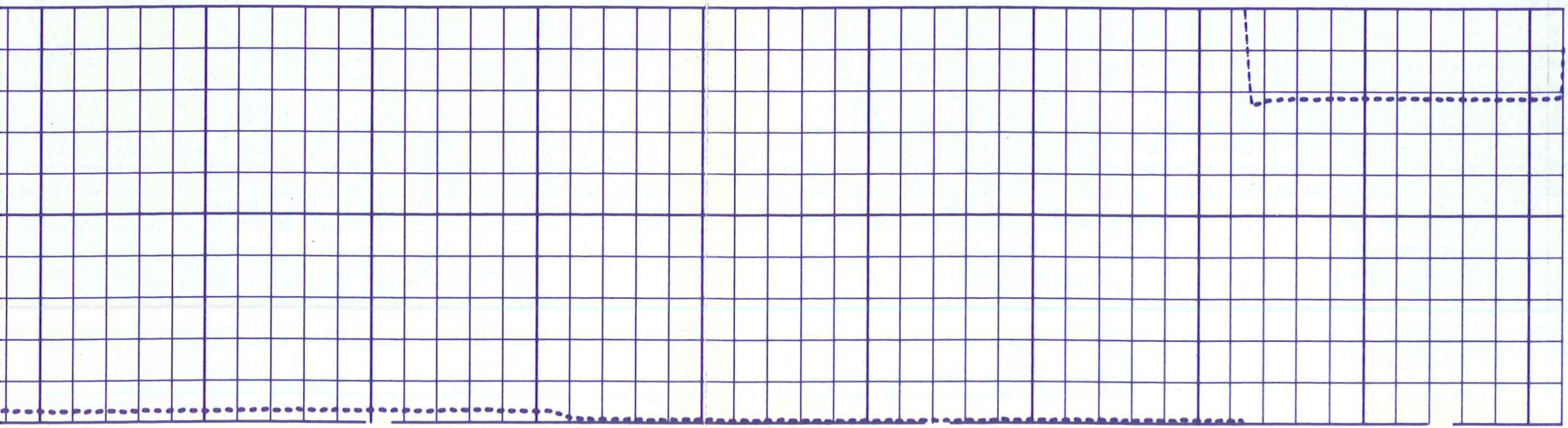
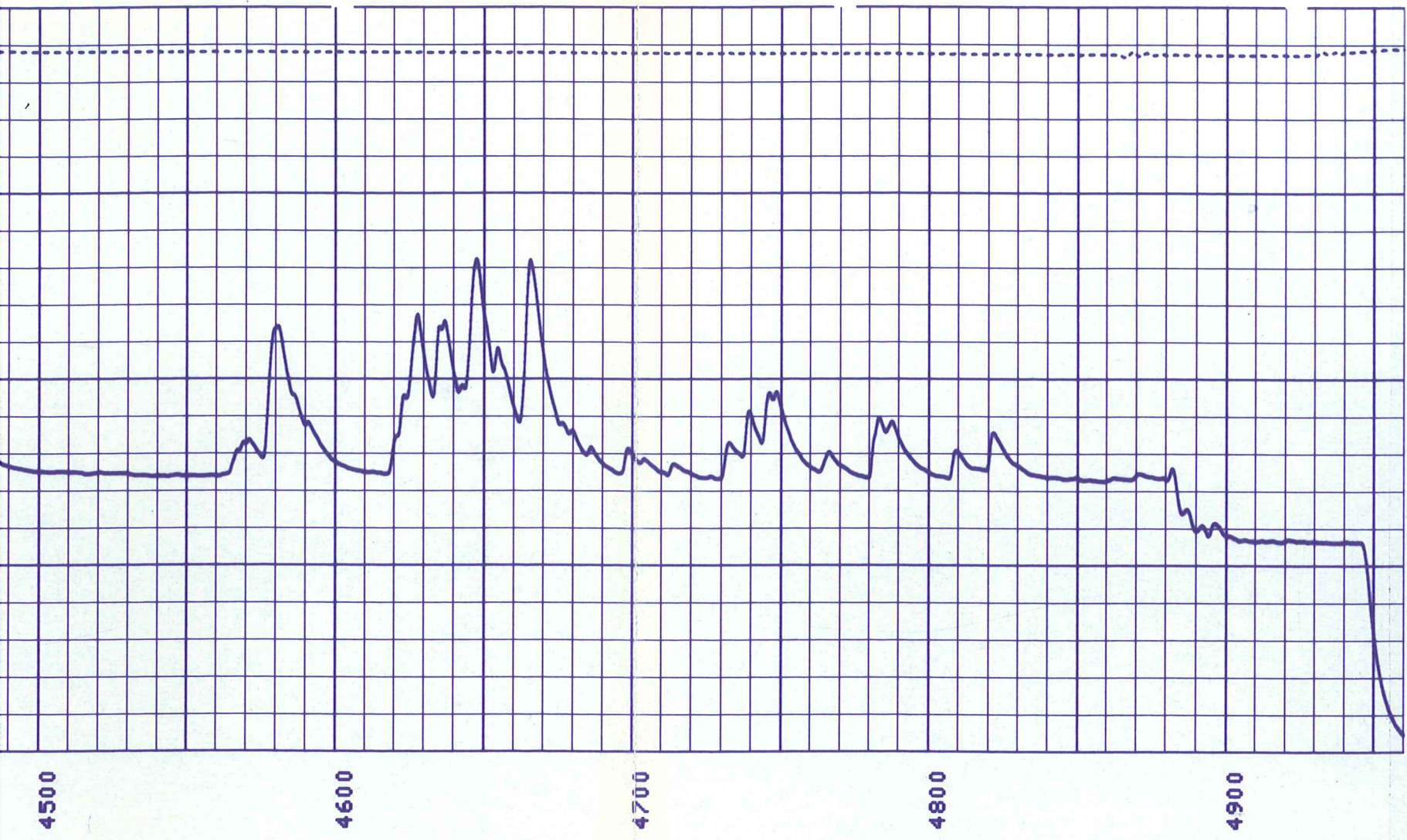
4200

4300

4400

4500

4600



2-2 039834

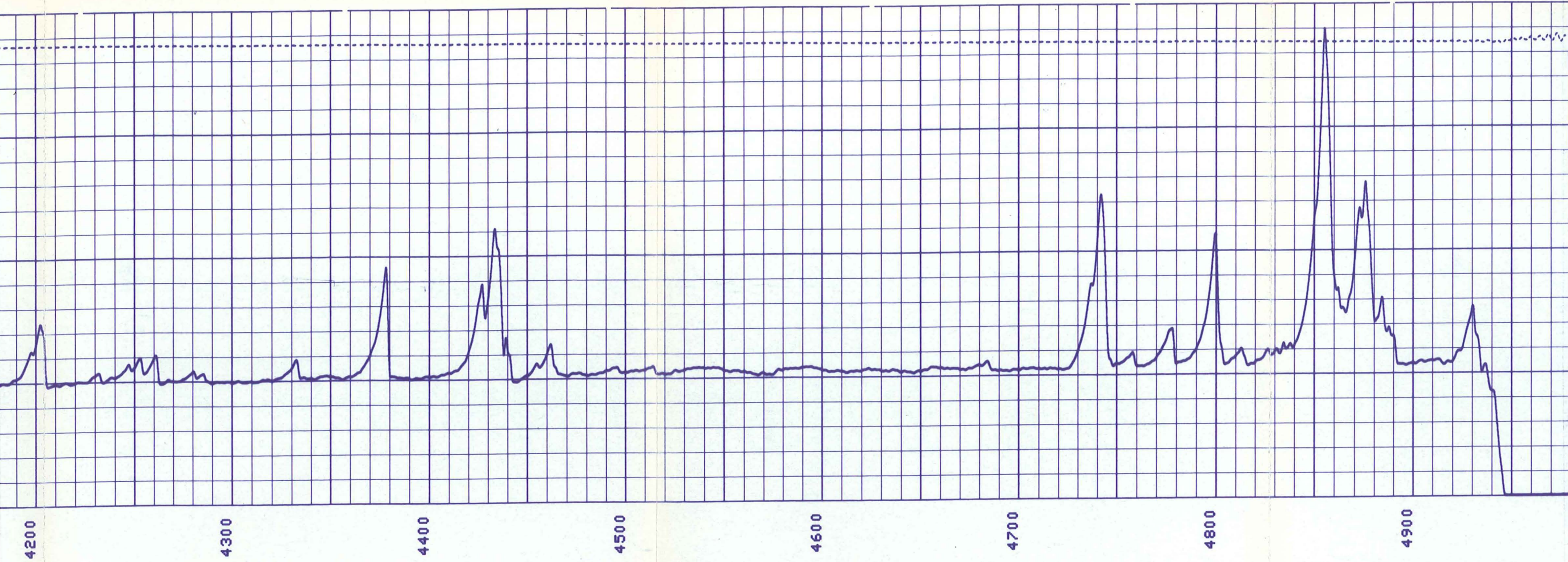
2222 13 13 13 13

LOGGED UP
WELL SHUT IN

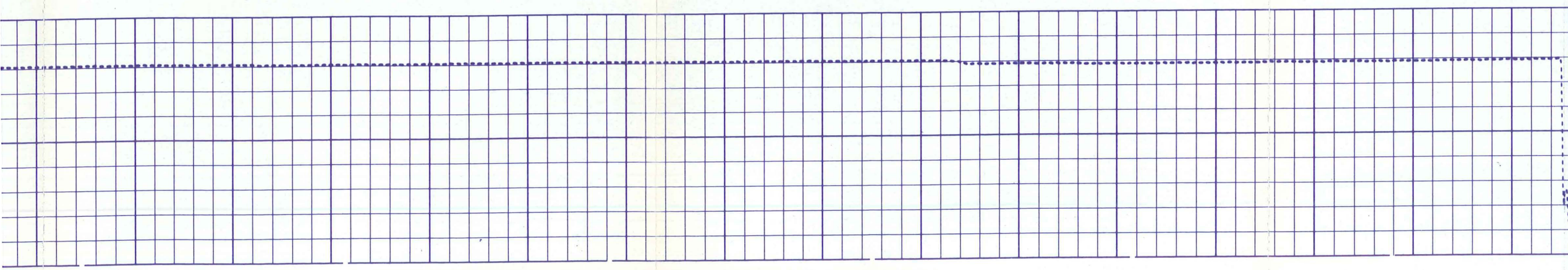
2-05-79 039834

WELL SHOT IN





2-05



13
13
13
13
13



4900

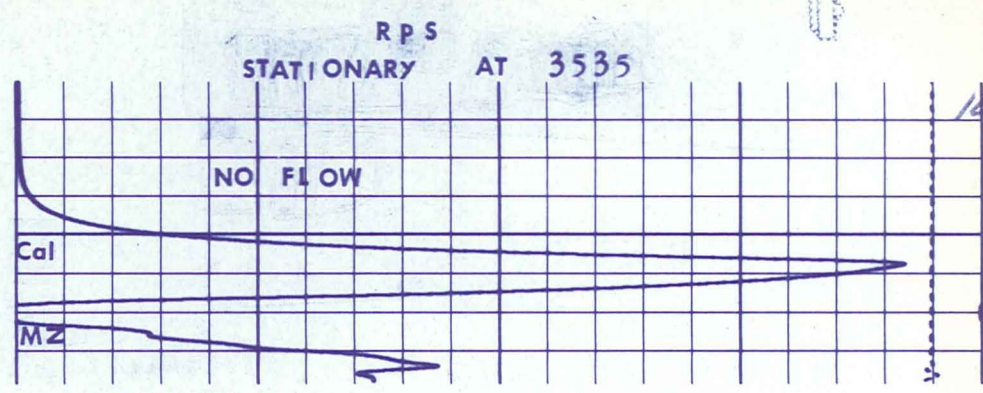
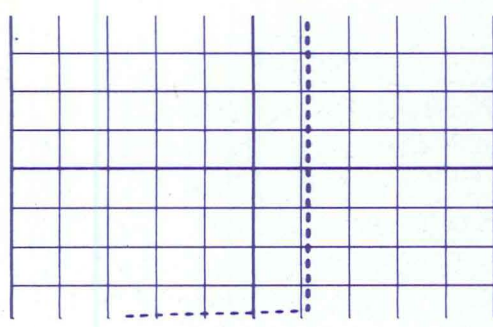


13
13
13
13
13
13



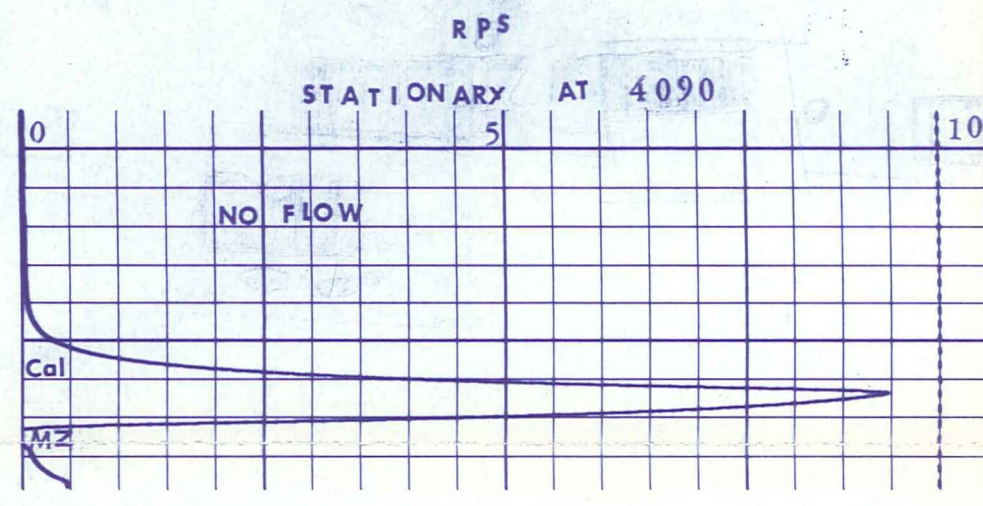
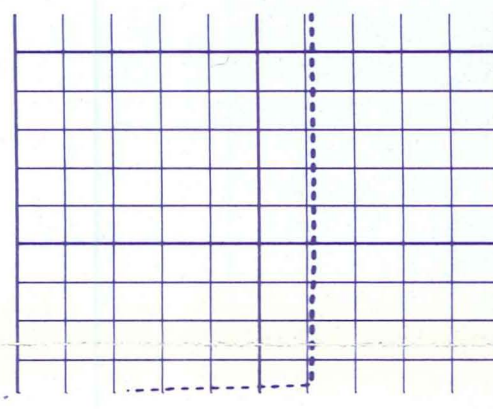
2-05-70
039834

20
20
20
20
20
20



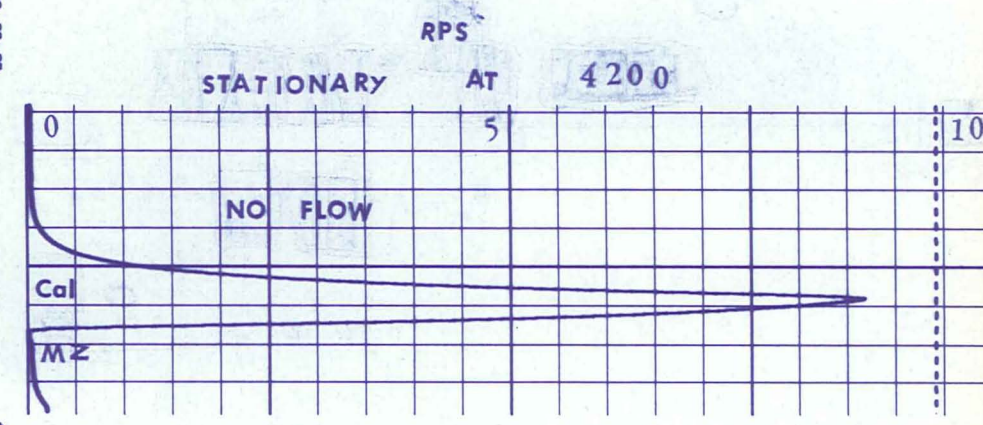
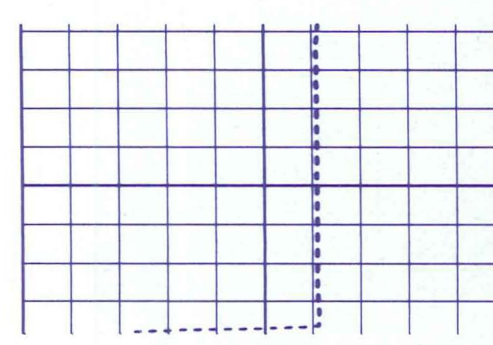
20
20
20
20
20
20

19
19
19
19
19
19



19
19
19
19
19
19

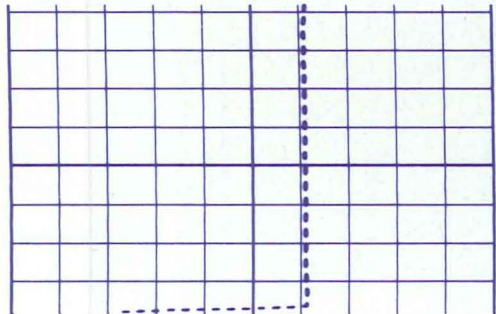
18
18
18
18
18
18



18
18
18
18
18
18

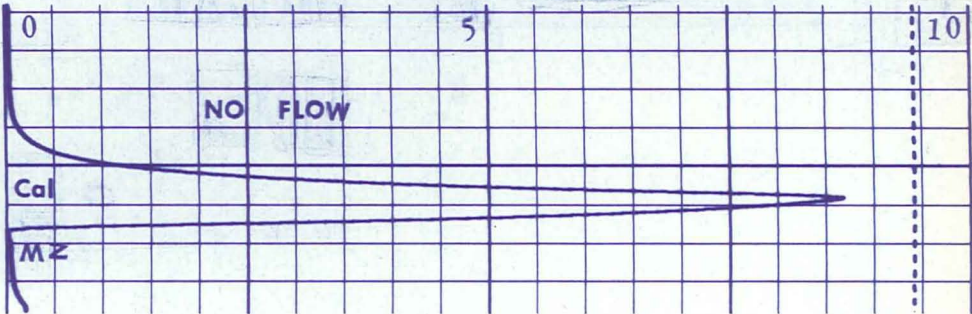
17
17
17
17

RPS



18

STATIONARY AT 4200

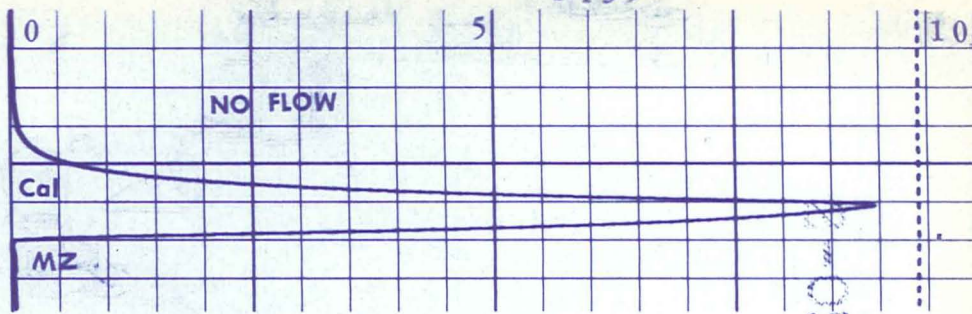
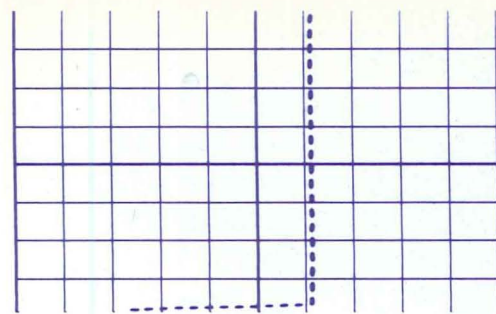


18
18
18
18
18
18

17
17
17
17
17
17

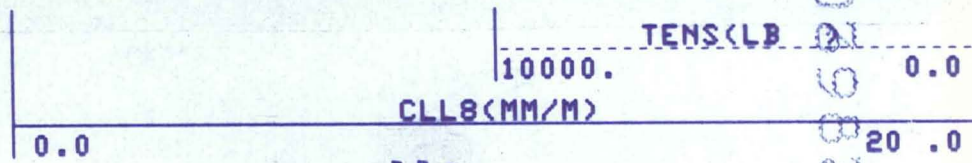
RPS

STATIONARY AT 4435



17
17
17
17
17
17

22



22
22
22
22
22

6L-40-79
029834