

**BOREHOLE COMPENSATED
SONIC LOG**

COUNTY CASSIA
FIELD RAFT RIVER
LOCATION 23 15S 26E
WELL RRGP #5
COMPANY E. G. & G.

COMPANY E. G. & G.
WELL RRGP #5
FIELD RAFT RIVER
COUNTY CASSIA STATE IDAHO
LOCATION NE-SE
API SERIAL NO. 23 SEC. 15S TWP. 26E RANGE
Other Services:
FDC - CNL - GA
HRT
DIL
FBS

Permanent Datum: GL ; Elev.: 4988
Log Measured From KB 14 Ft. Above Perm. Datum
Drilling Measured From KB Elev.: K.B. 5002
D.F. 4988
G.L. 4988

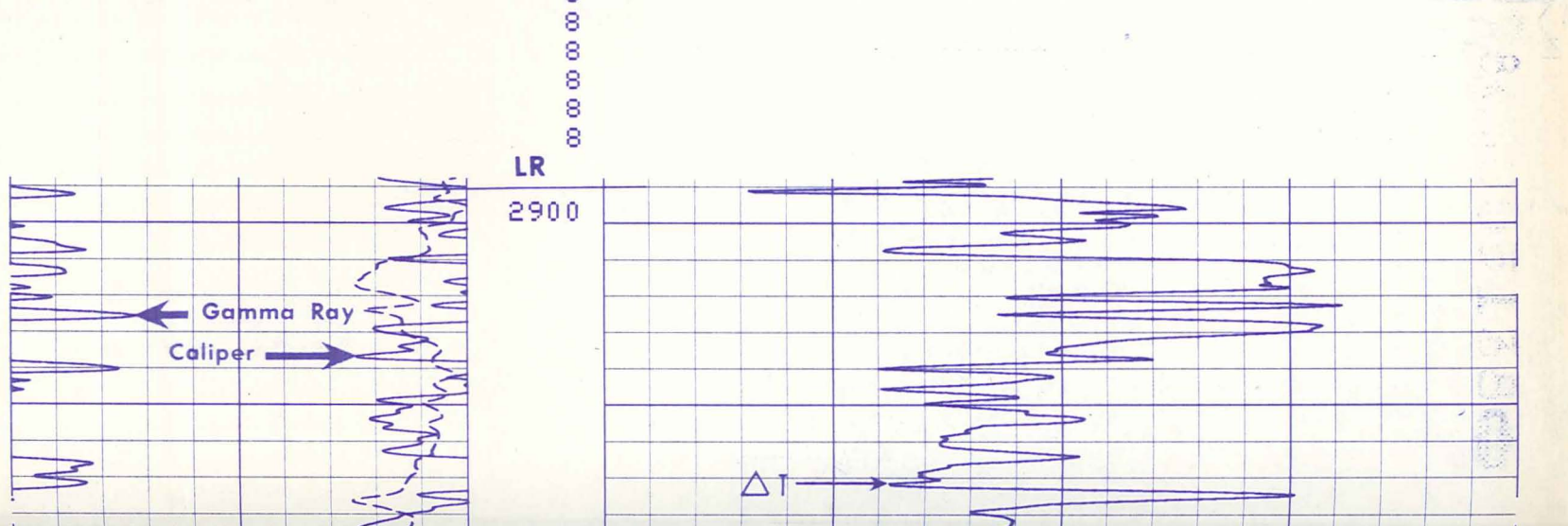
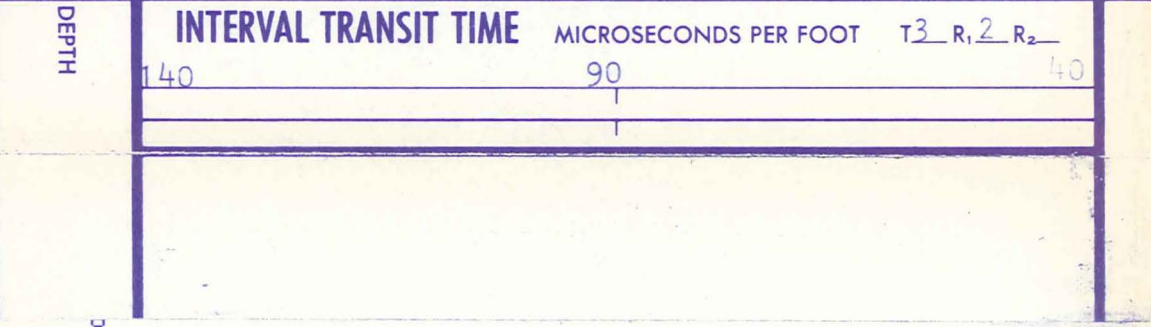
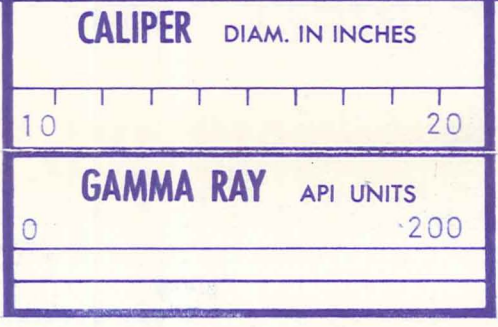
Date	7-8-78		
Run No.	ONE		
Depth-Driller	4911		
Depth-Logger (Schl.)	4917		
Btm. Log Interval	4903		
Top Log Interval	2903		
Casing-Driller	13 3/8	1500	@
Casing-Logger	1513		@
Bit Size	12 1/4		
Type Fluid In Hole	WATER		
Dens. Visc.	1.0		
pH Fluid Loss		ml	ml
Source of Sample			
Rm @ Meas. Temp.	1.74 @ 74 °F	BOREHOLE °F	@ °F
Rmf @ Meas. Temp.		FLUID °F	@ °F
Rmc @ Meas. Temp.			@ °F
Source: Rmf Rmc			@ °F
Rm @ BHT			@ °F
Circulation Stopped	7-7	1000	
Logger on Bottom	7-7	2300	
Max. Rec. Temp.	276		°F
Equip. Location	8053	RS	
Recorded By	TERRY/NOLO		
Witnessed By Mr.	PRESTWICH		

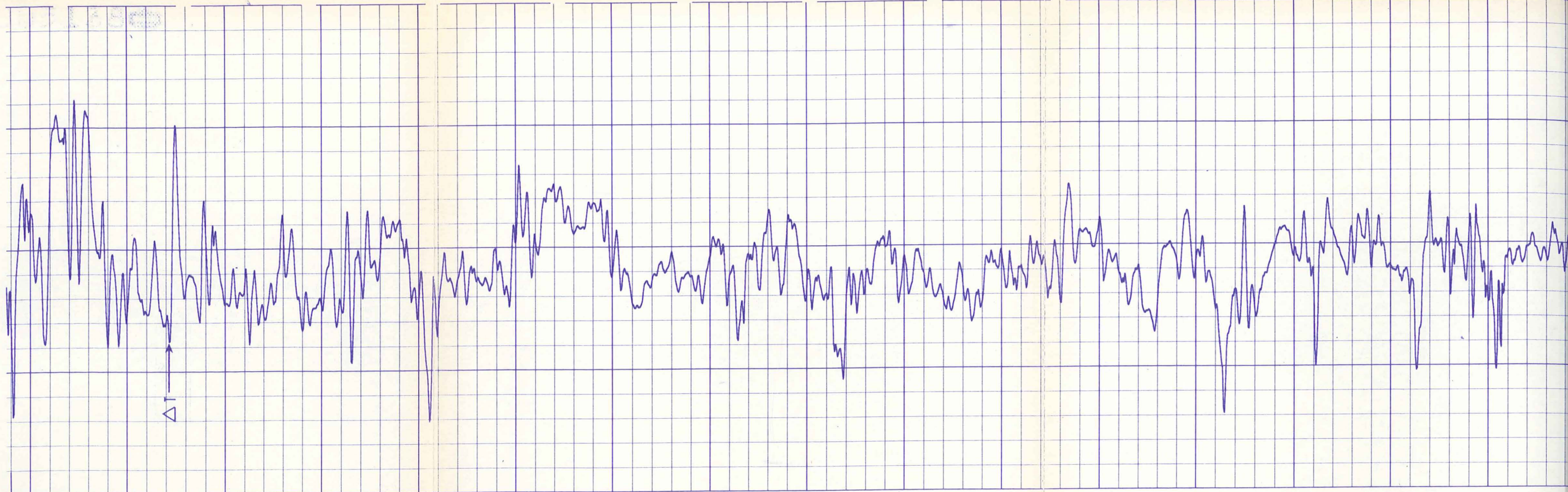
FOLD HERE The well name, location and borehole reference data were furnished by the customer.

Run No.	ONE
Service Order No.	5138
Fluid Level	FULL
EQUIPMENT DATA	
Sonic Panel No.	SLM-CA-116
Sonic Cart No.	FA-654
Sonic Sonde No.	RA-2086
Mem. Panel No.	-----
G.R. Cart No.	JAA-226
G.R. Panel No.	NLM-BB141
Caliper No.	-----
TTR No.	MTU-947
Centralizers: No.	2
Type	CMEZ
Standoffs: No.	-----
Type	-----
Time Const.-Sec.	-----
Speed - F.P.M.	90
CALIBRATION DATA	
GR	BKG. CPS * Source CPS * Tc Sec *
	SEE CALIBRATION SUMMARY IN LOG TAIL.

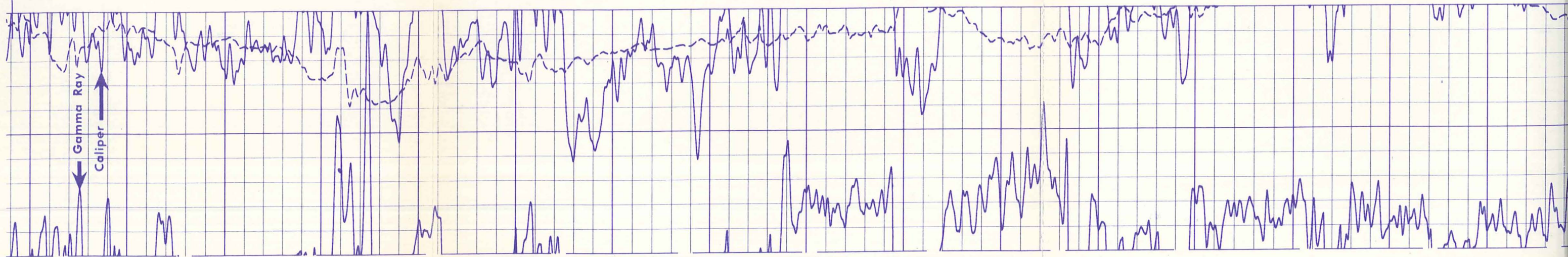
SCALE CHANGES					
Type Log	Depth	Scale Up Hole	Scale Down Hole		
LOGGING DATA					
Porosity Selectors				Depth	
Δt_m	Δt_f	Cp	ϕ Scale	From	To
51.3	189	1.0	50 -10	ALL	
REMARKS					
CALIPER MERGED FROM FDC SGTE/SLTL					
Velocity (ft/sec) = $\frac{1,000,000}{\text{Interval Transit Time (microseconds per foot)}}$					

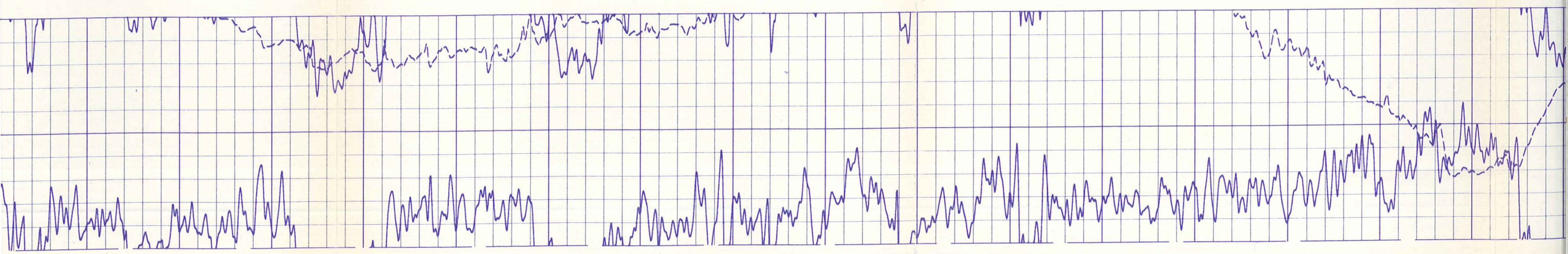
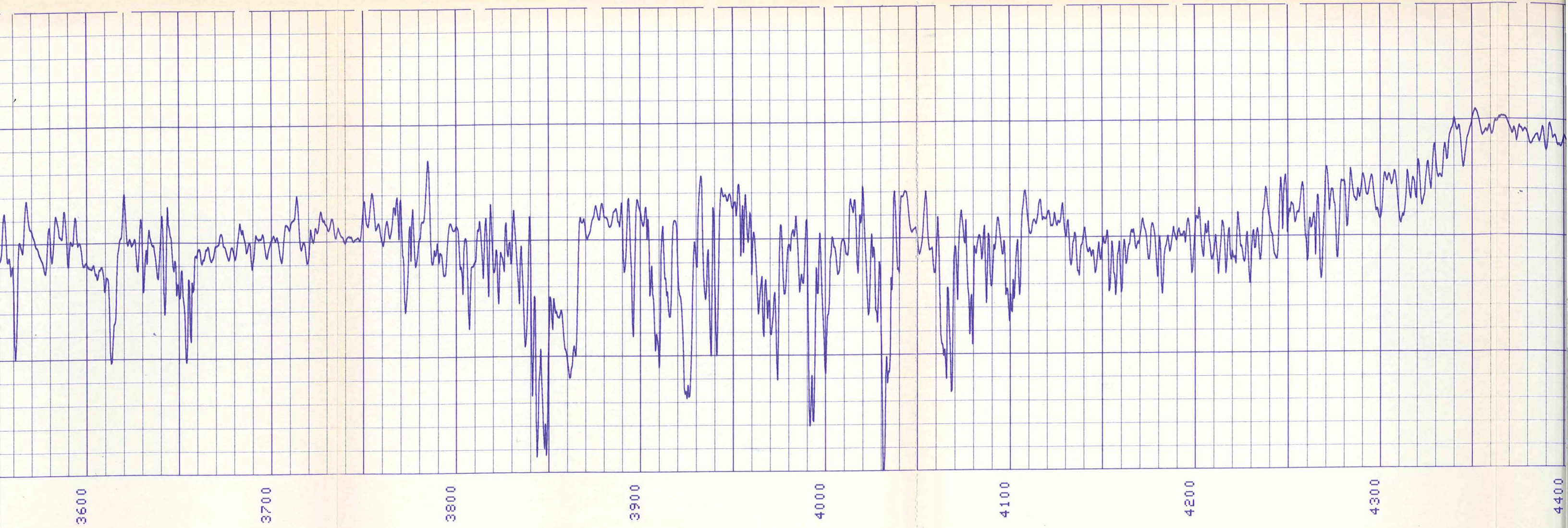
All interpretations are opinions based on inferences from electrical or other measurements and we cannot, and do not guarantee the accuracy or correctness of any interpretations, and we shall not, except in the case of gross or willful negligence on our part, be liable or responsible for any loss, costs, damages or expenses incurred or sustained by anyone resulting from any interpretation made by any of our officers, agents or employees. These interpretations are also subject to Clause 4 of our General Terms and Conditions as set out in our current Price Schedule.

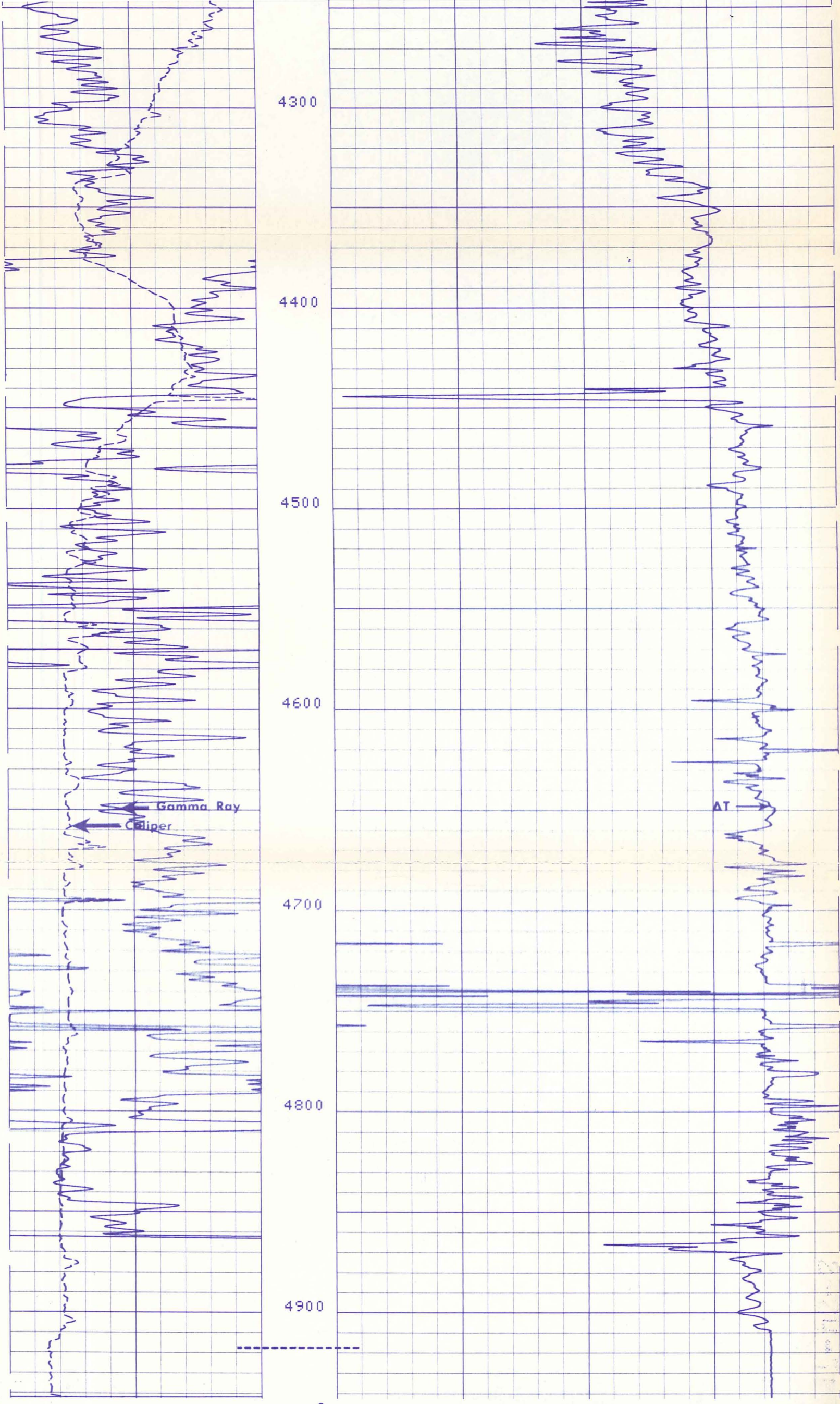




LR 2900 3000 3100 3200 3300 3400 3500 3600







4300
4400
4500
4600
4700
4800
4900

Gamma Ray
Caliper

AT

8

GAMMA RAY		API UNITS
0		200

CALIPER		DIAM. IN INCHES
10		20

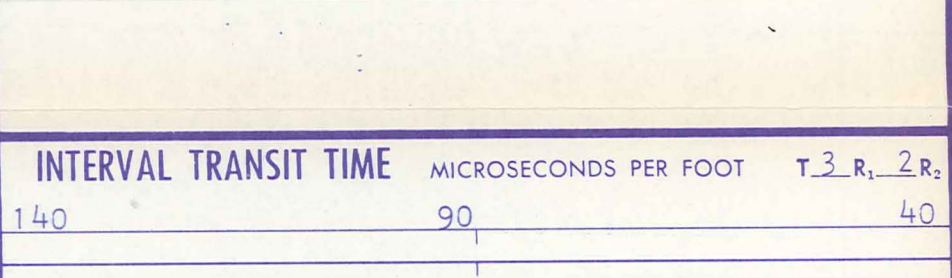
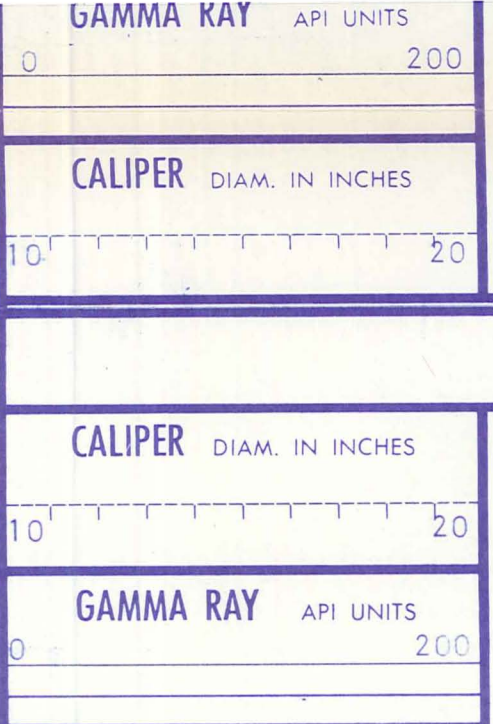
INTERVAL TRANSIT TIME		MICROSECONDS PER FOOT	T ₃ R ₁ 2R ₂
140		90	40

DETAIL LOG
5" = 100'

CALIPER		DIAM. IN INCHES
10		20

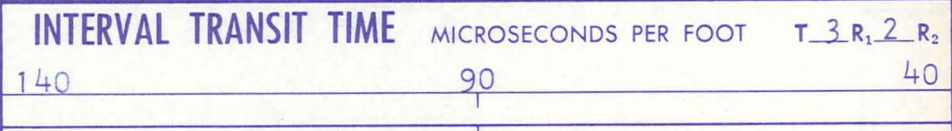
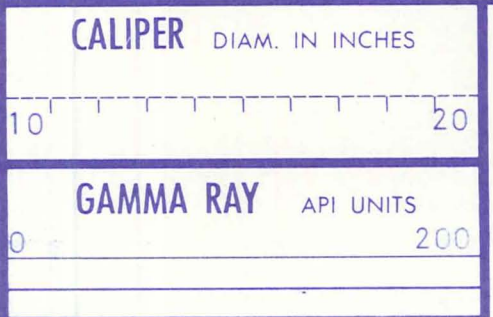
DEPTH

INTERVAL TRANSIT TIME		MICROSECONDS PER FOOT	T ₃ R ₁ 2R ₂
140		90	40



DEPTH

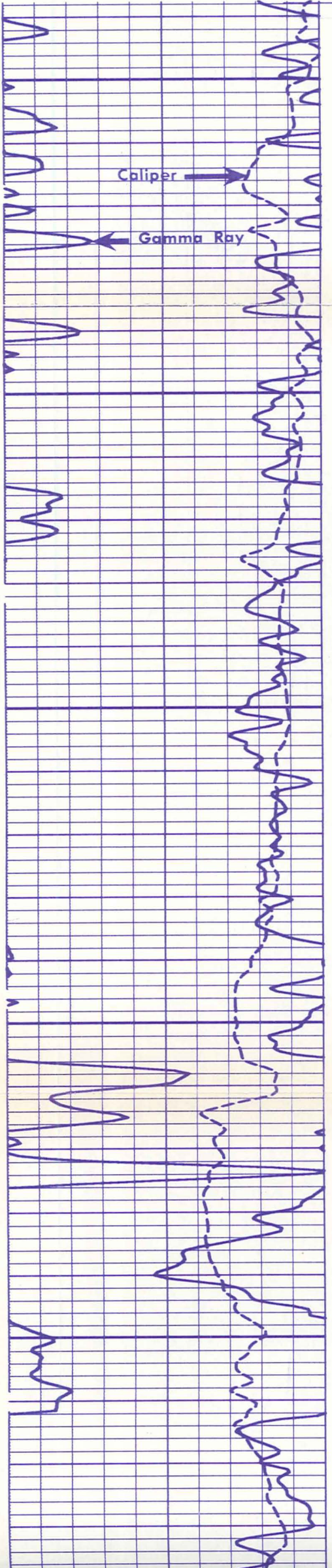
DETAIL LOG
5" = 100'



DEPTH



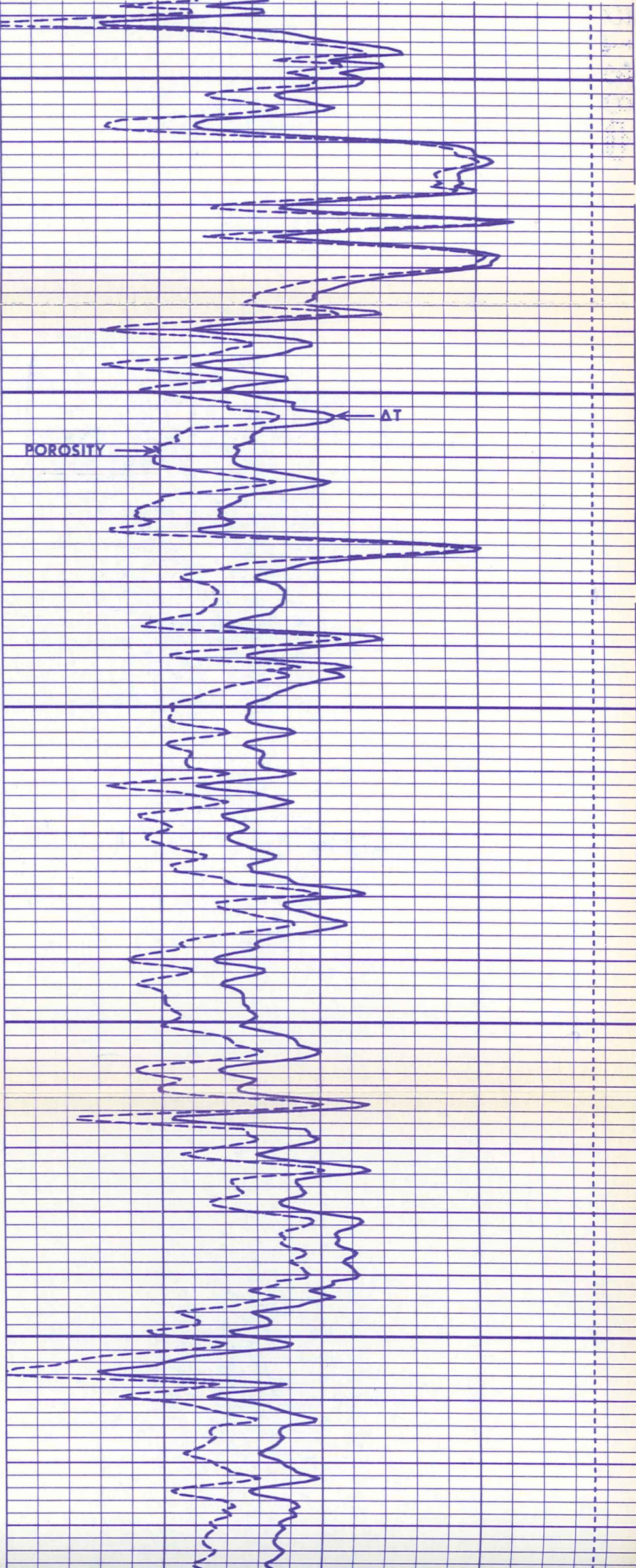
LR
8
8
8

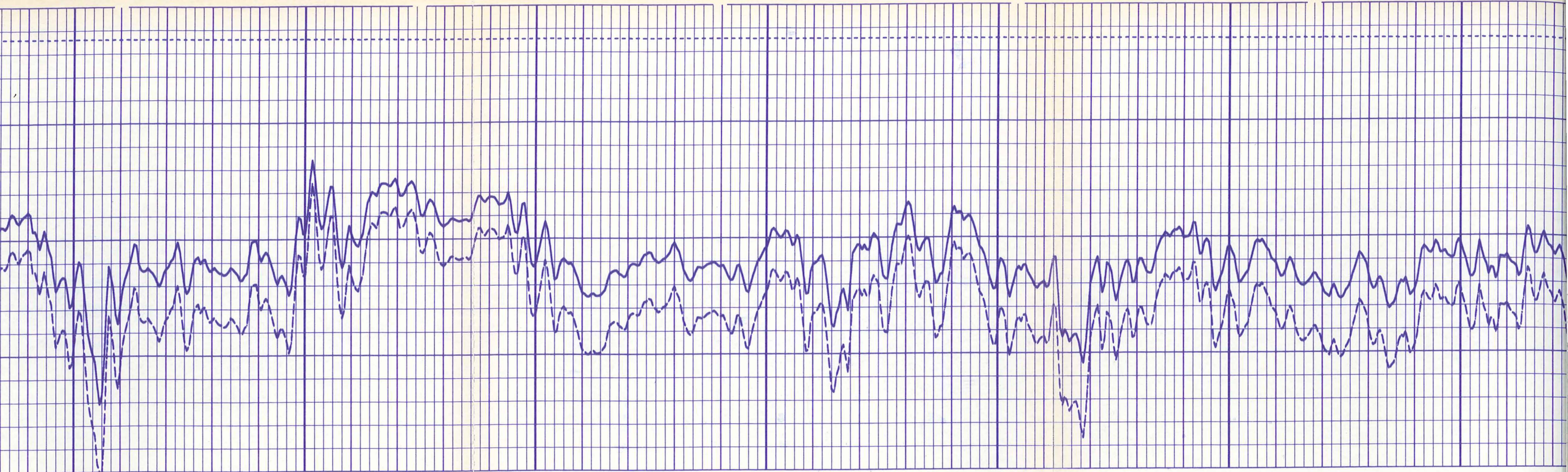


2900

3000

3100



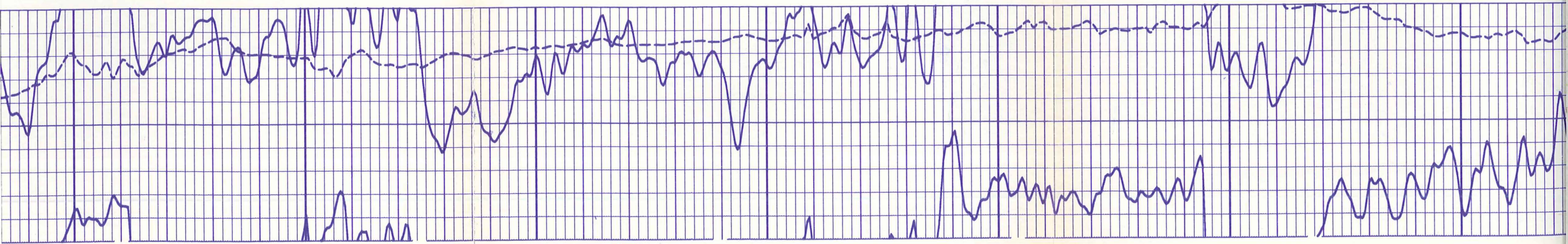


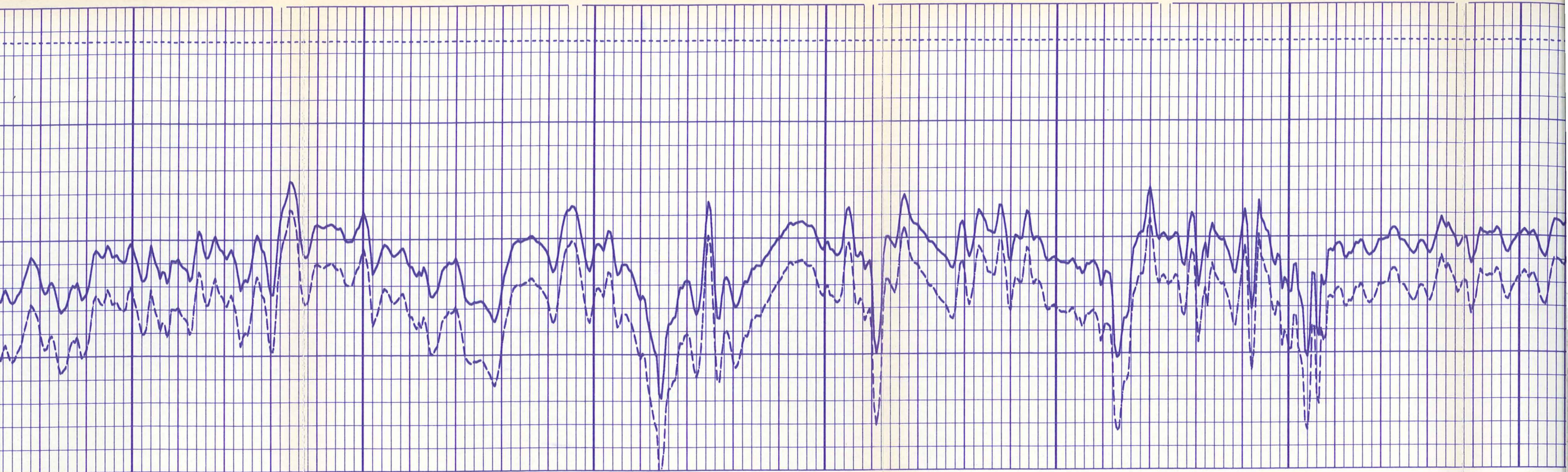
3100

3200

3300

3400



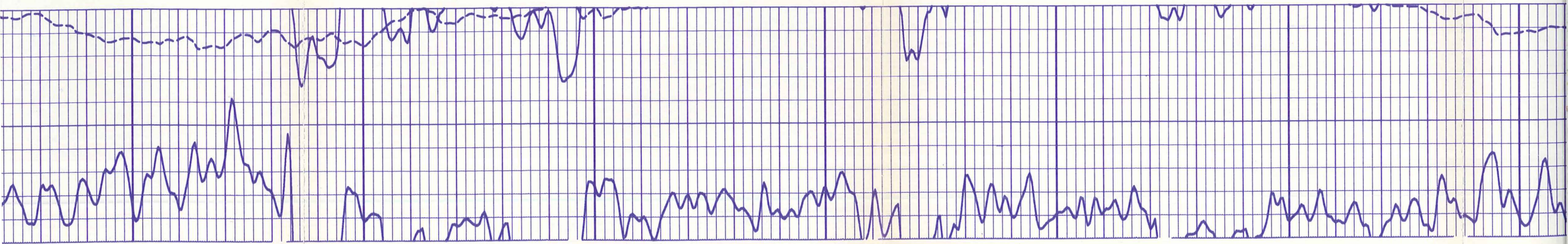


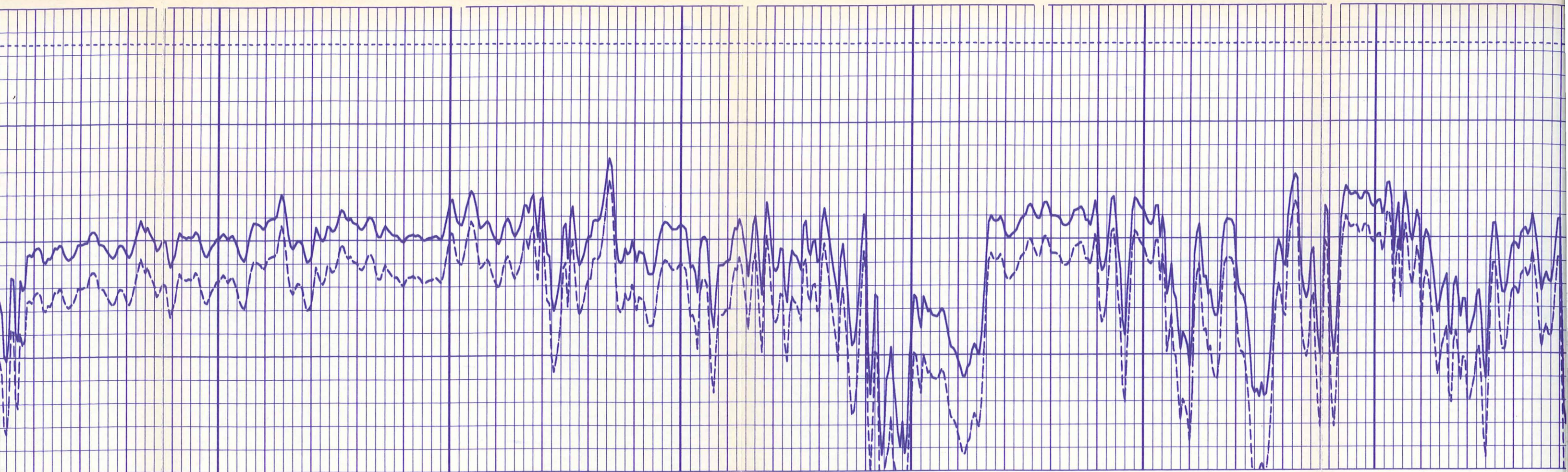
3400

3500

3600

3700

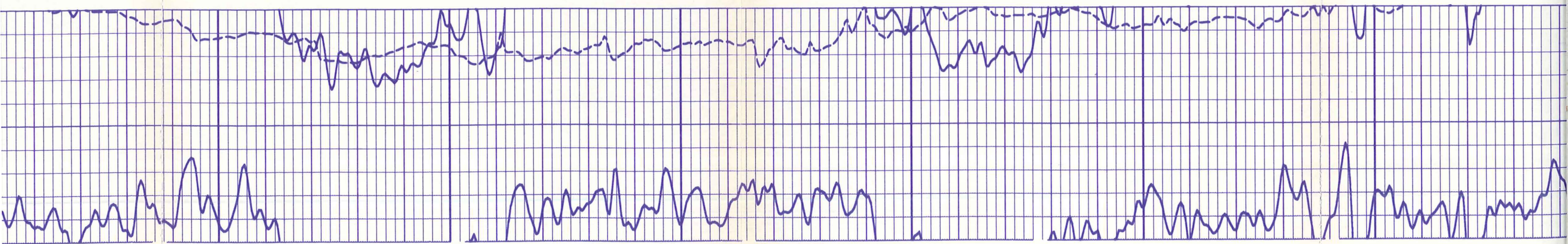


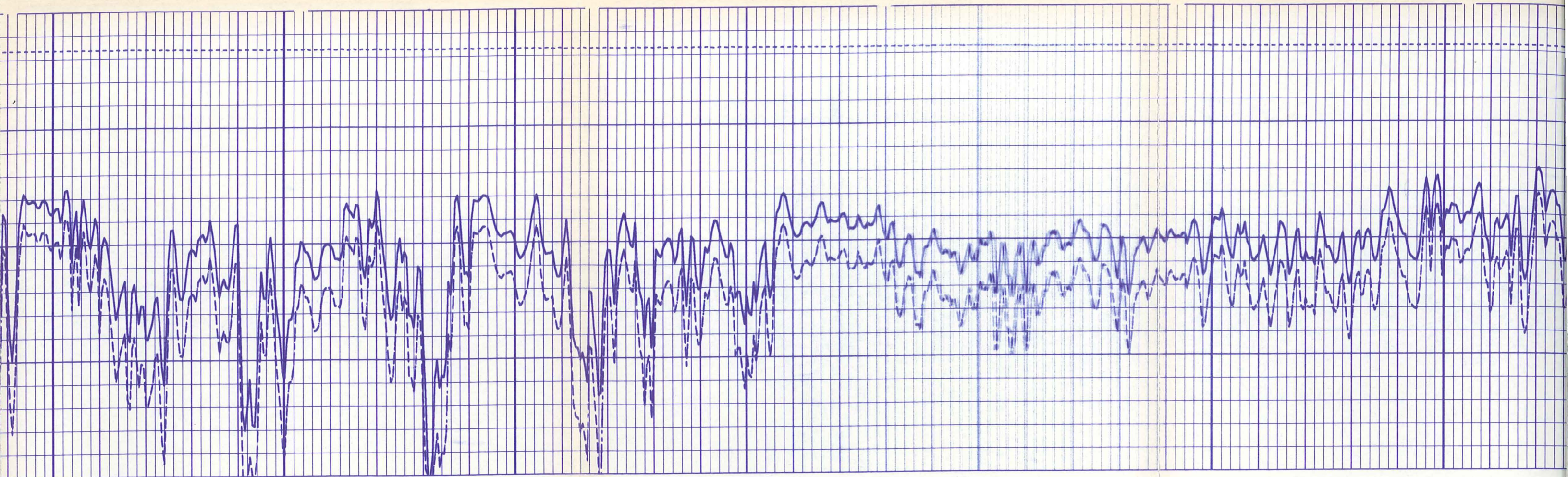


3700

3800

3900

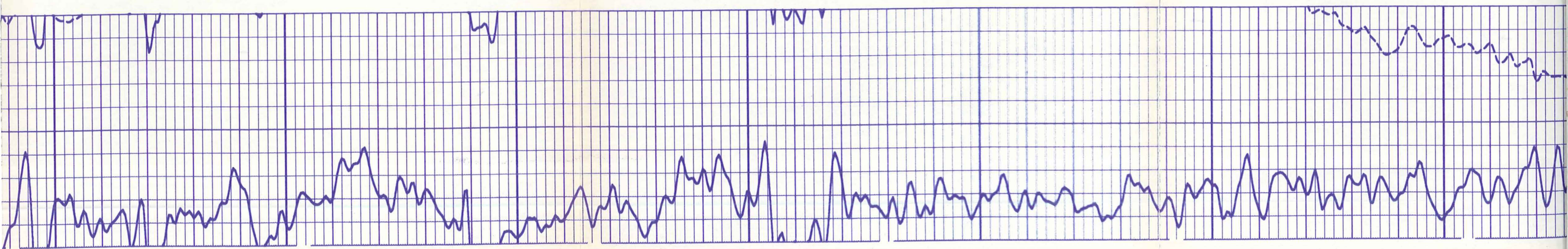


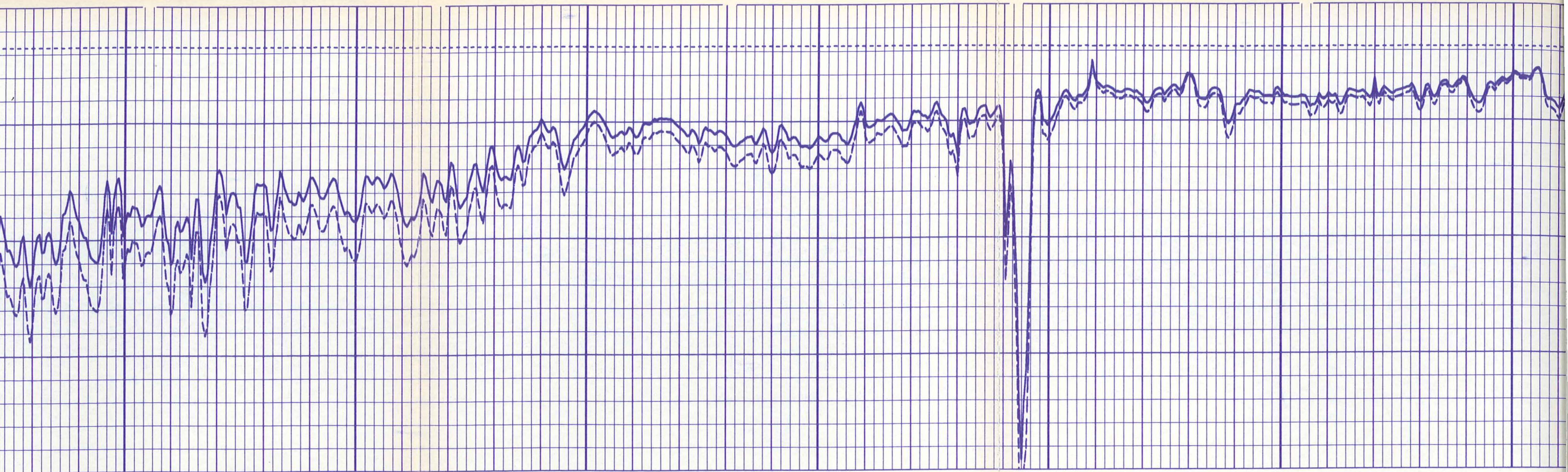


4000

4100

4200

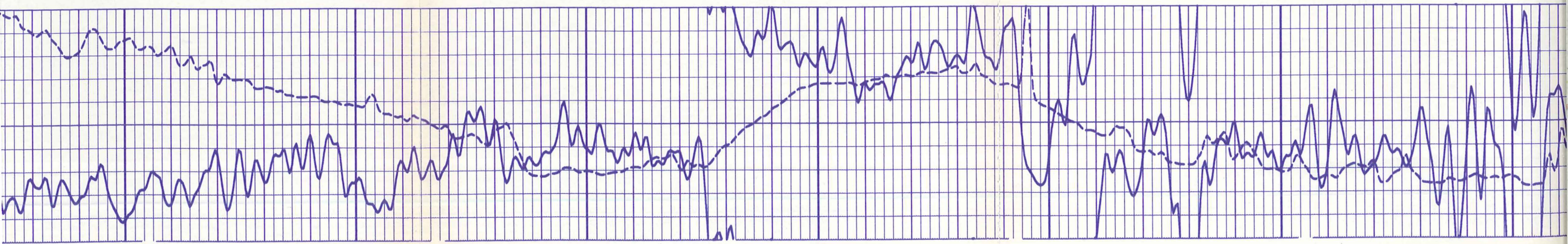


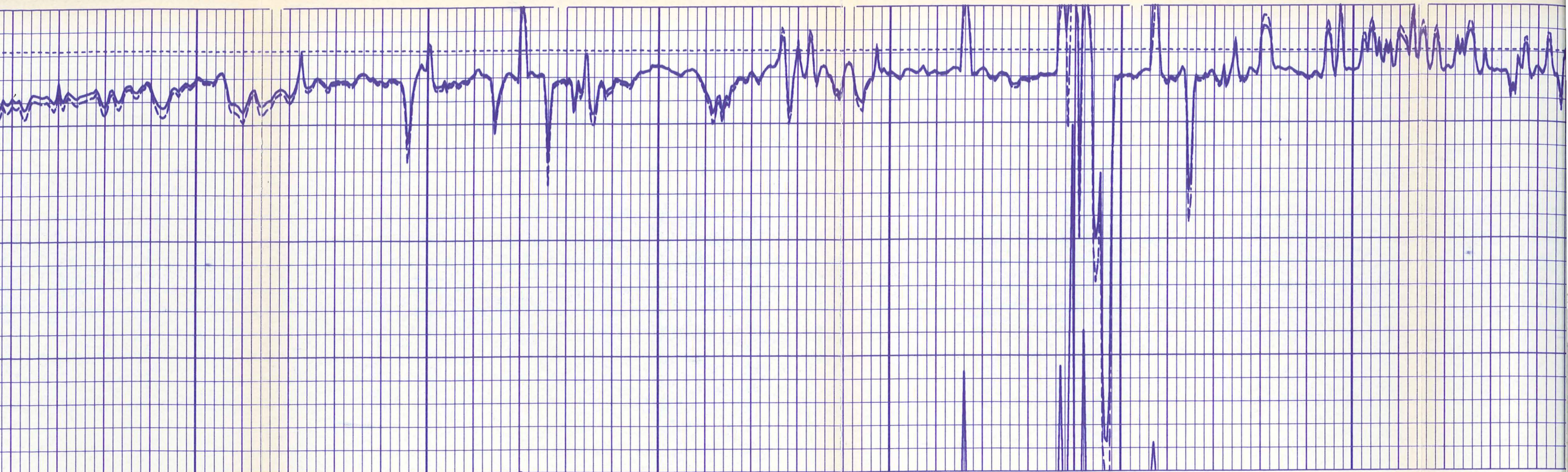


4300

4400

4500

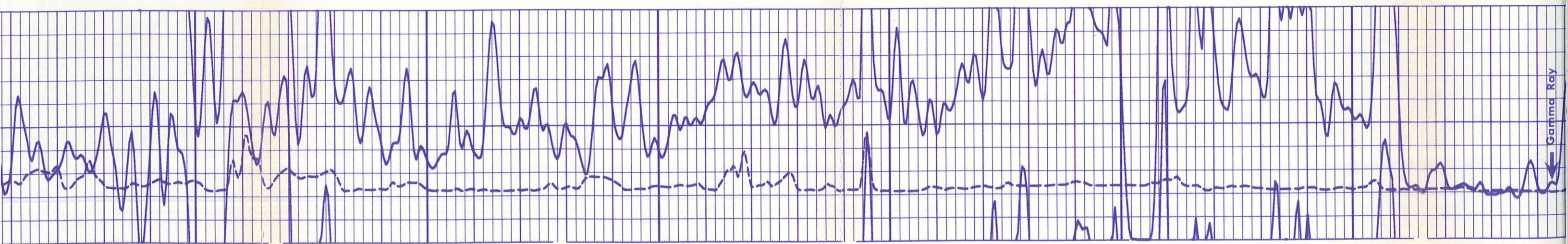




4600

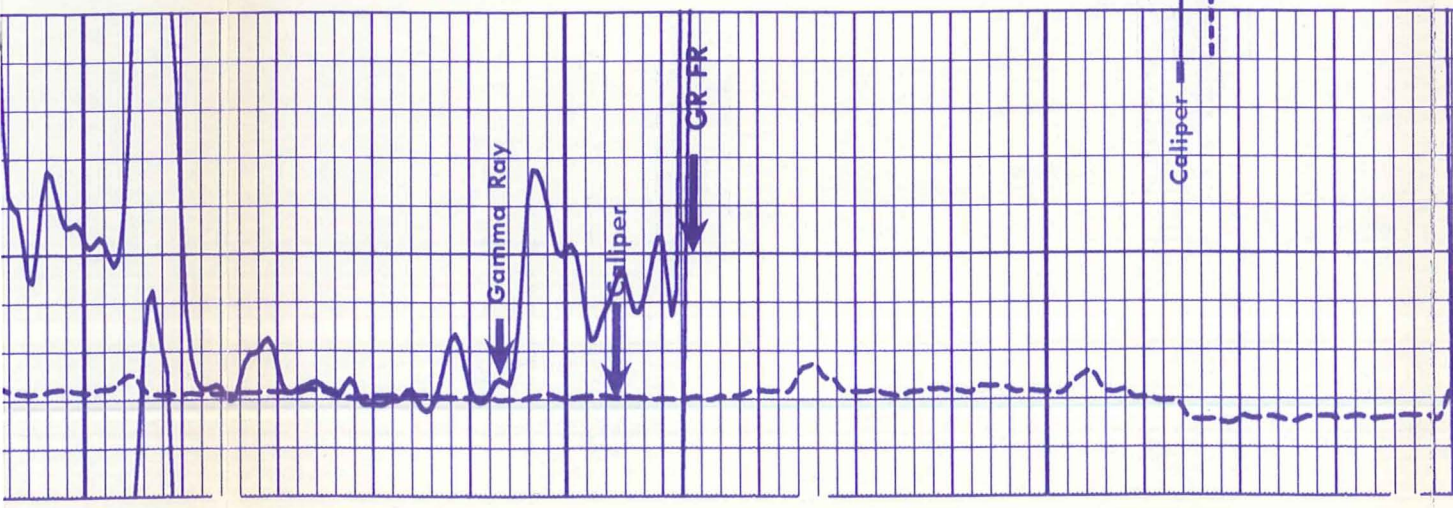
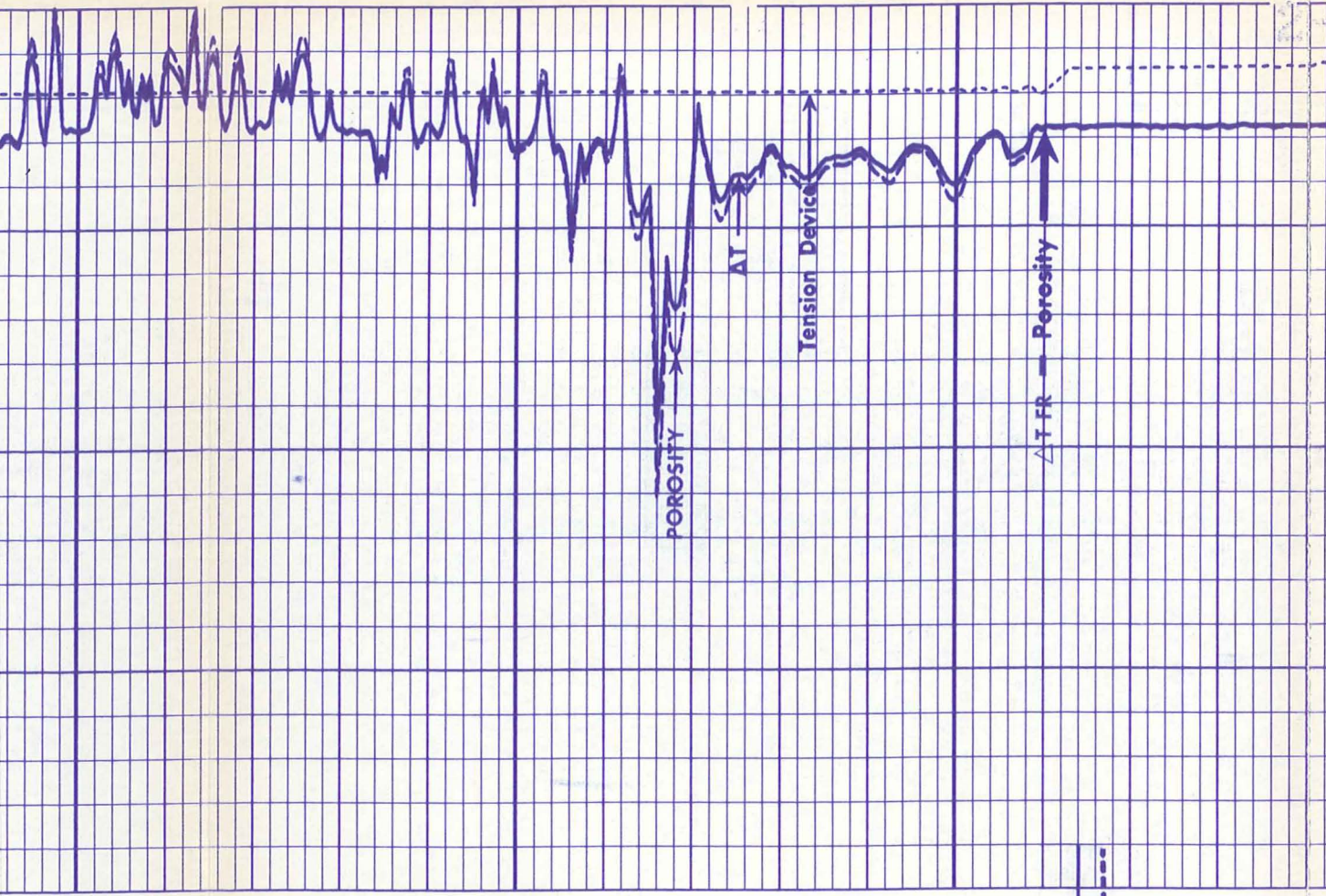
4700

4800

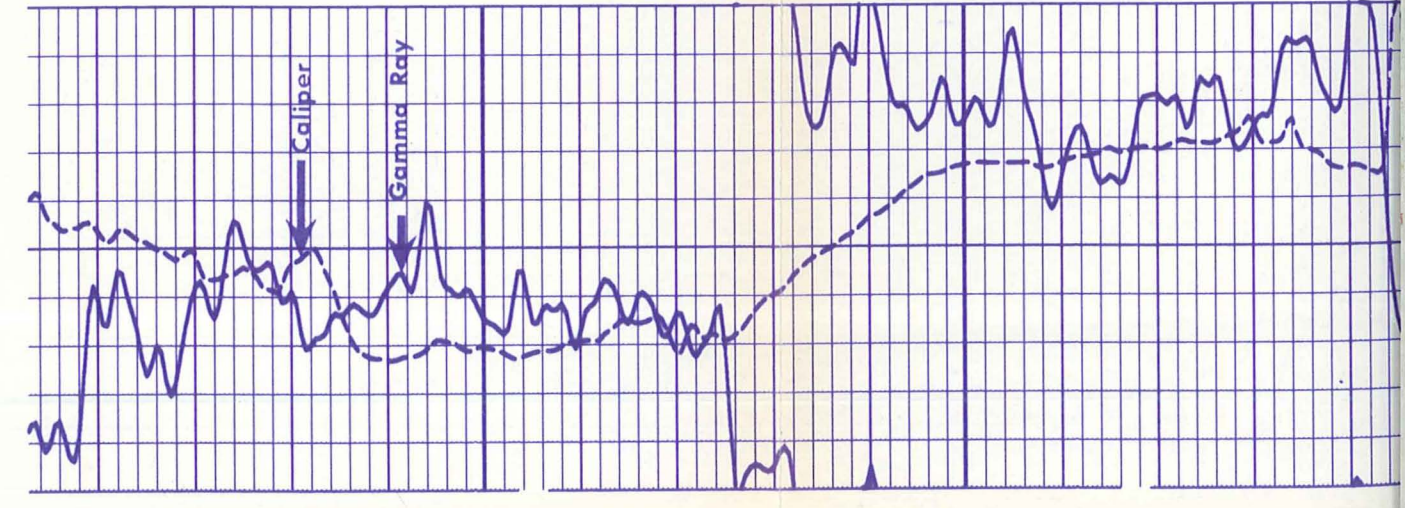
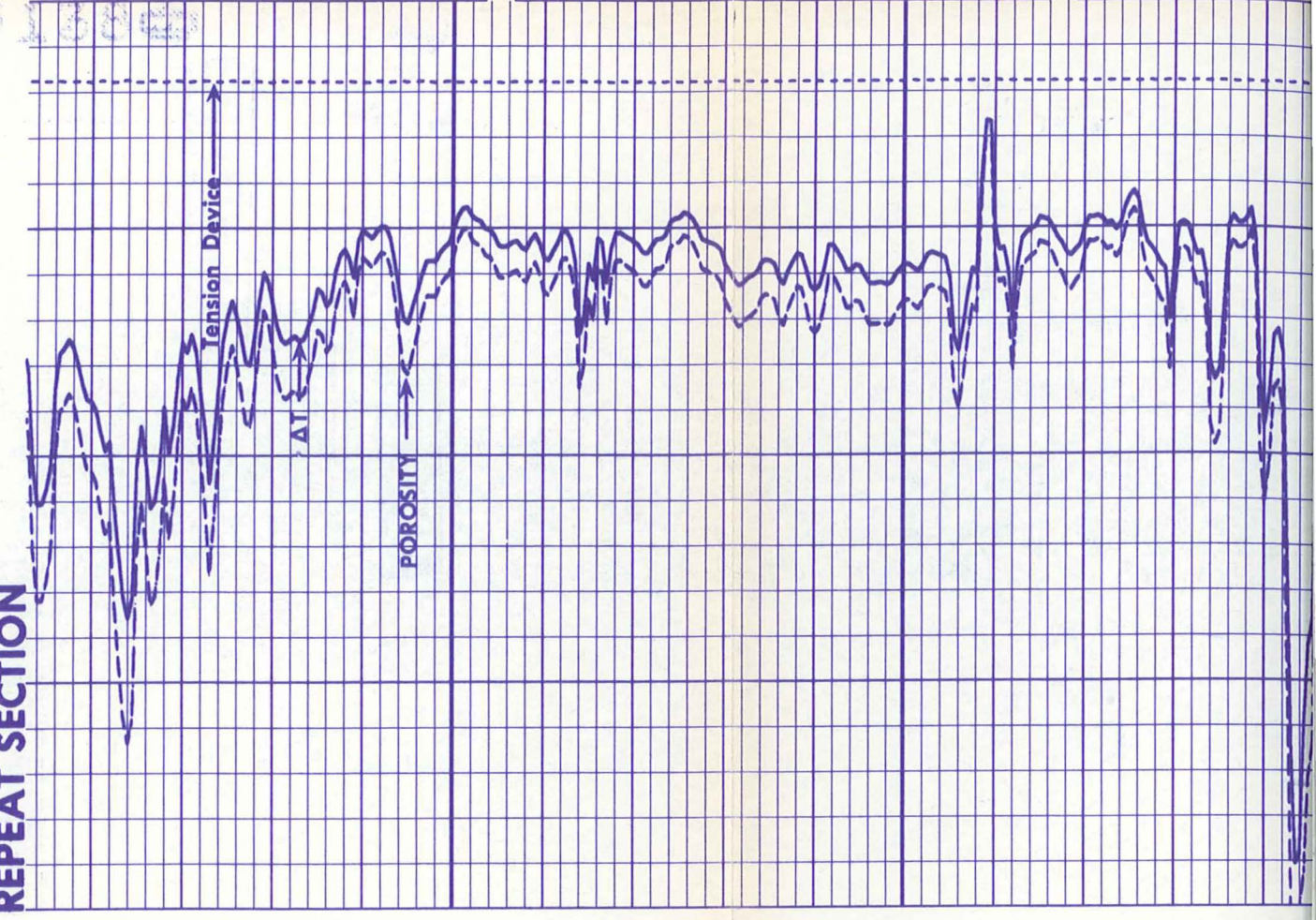


Gamma Ray

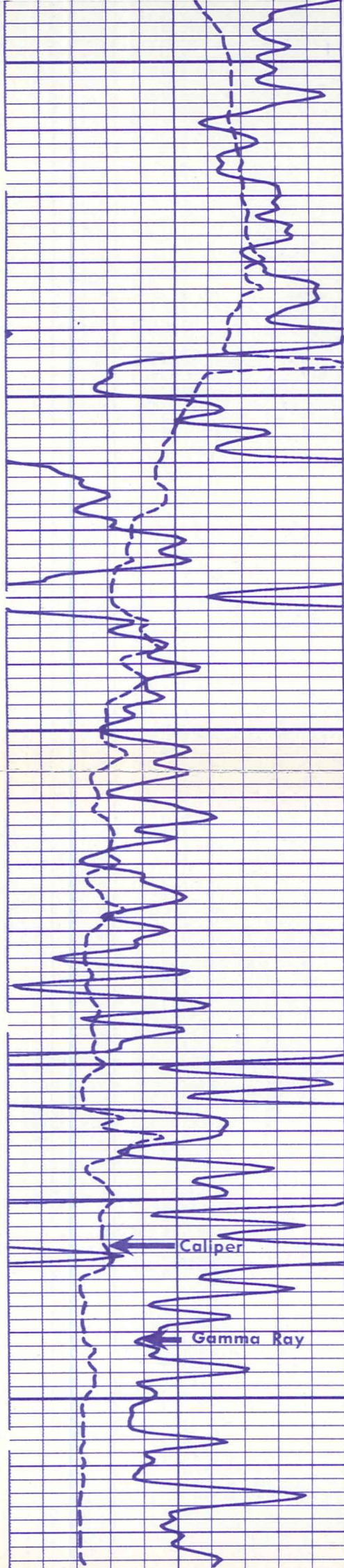
24-788005 1384



REPEAT SECTION



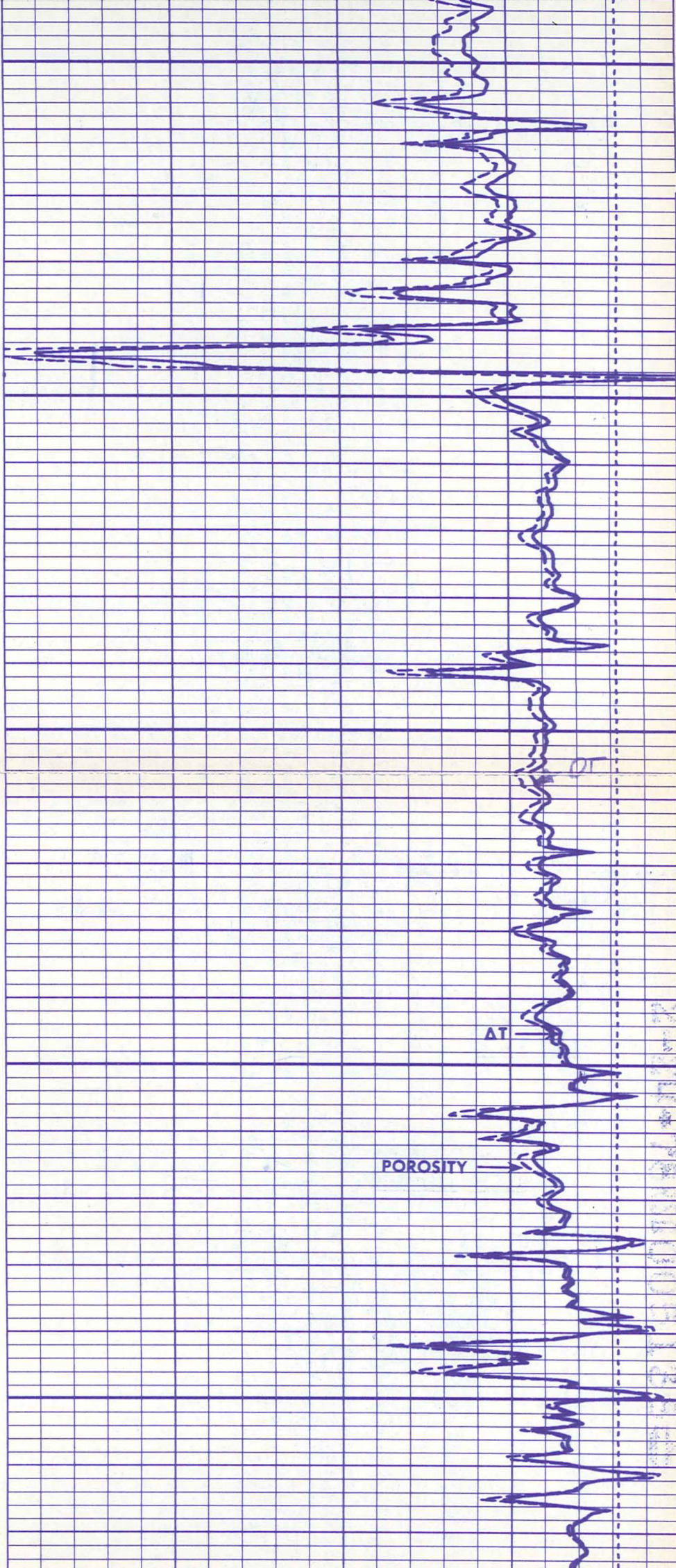
000000 NNNNN



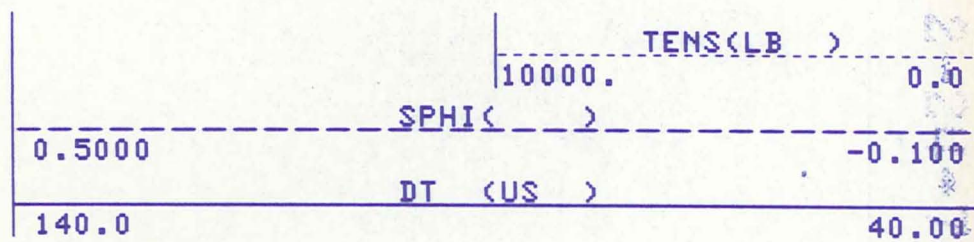
4400

4500

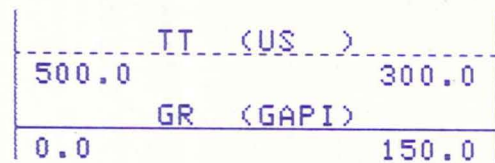
4600



7
7
7
7
7
7



10
10
10
10
10



10
10

09210051282

RECORDED 1388

10
10
10
10
10
10

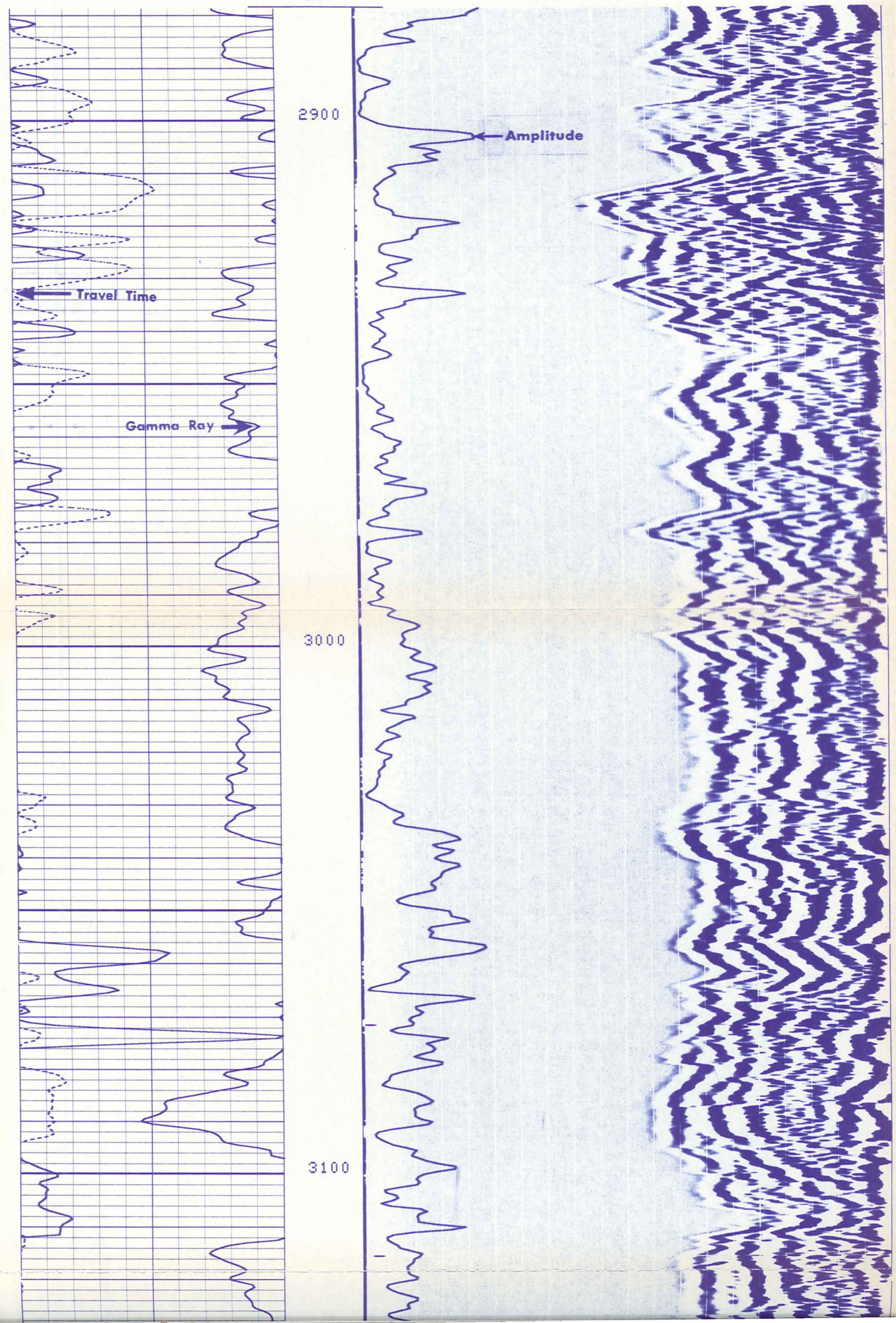
IT (US)	
500.0	300.0
GR (GAPI)	
0.0	150.0

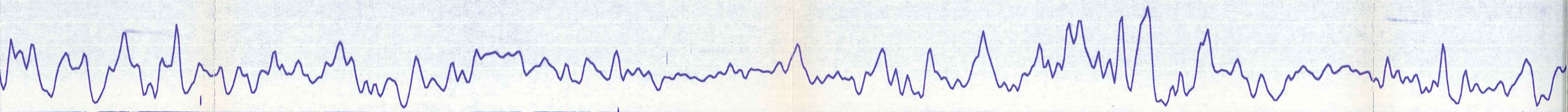
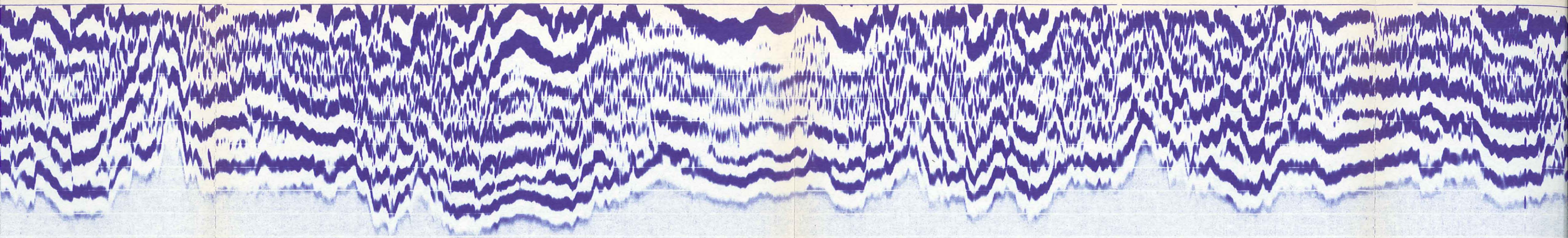
AMPL (MV)	
0.0	50.00

10
10
10
10
10
10

8
8
8
8
8
8

LR



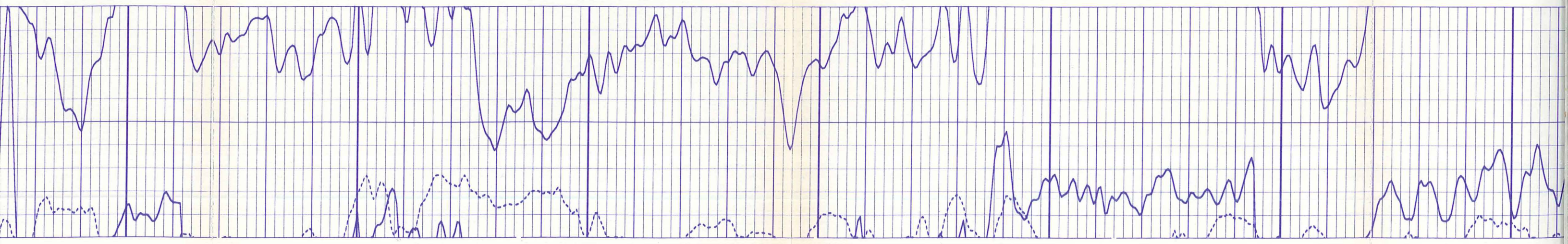


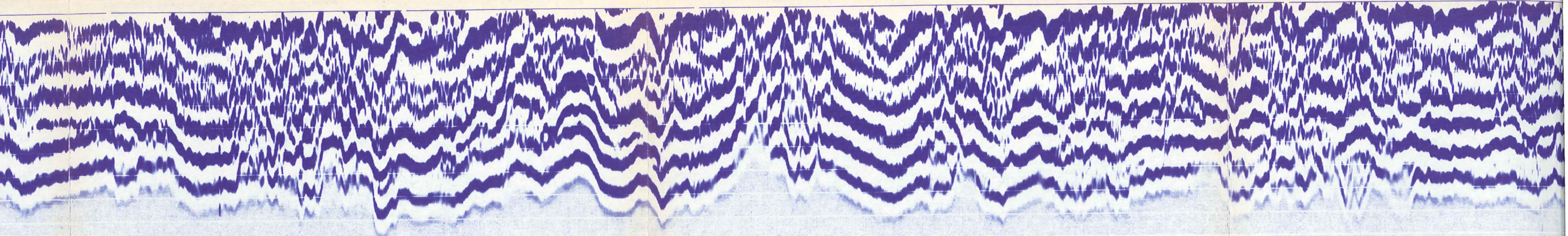
3100

3200

3300

3400

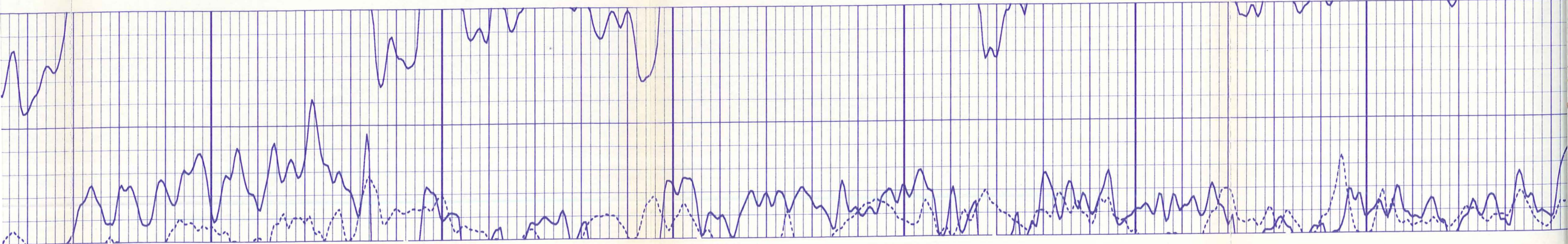


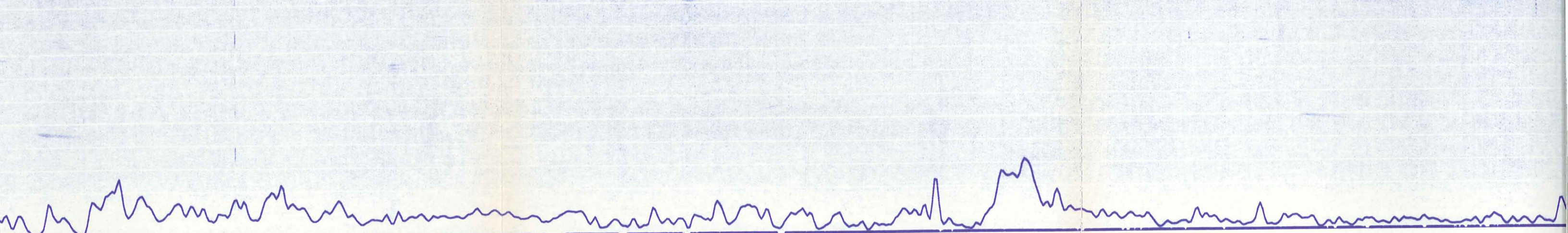
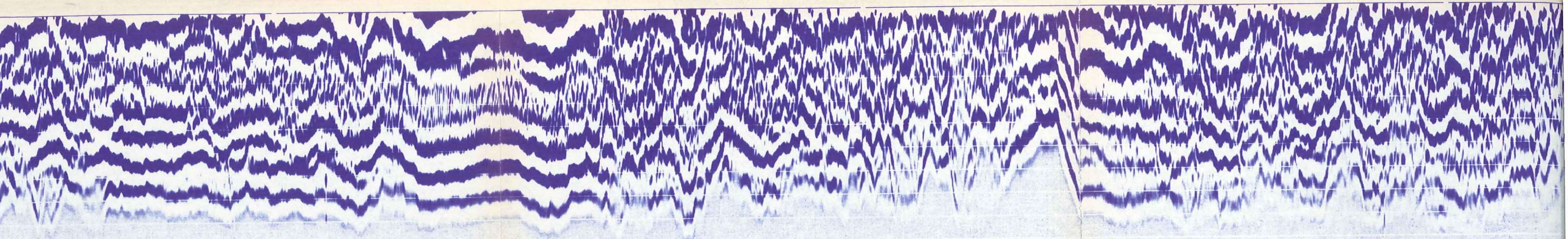


3400

3500

3600

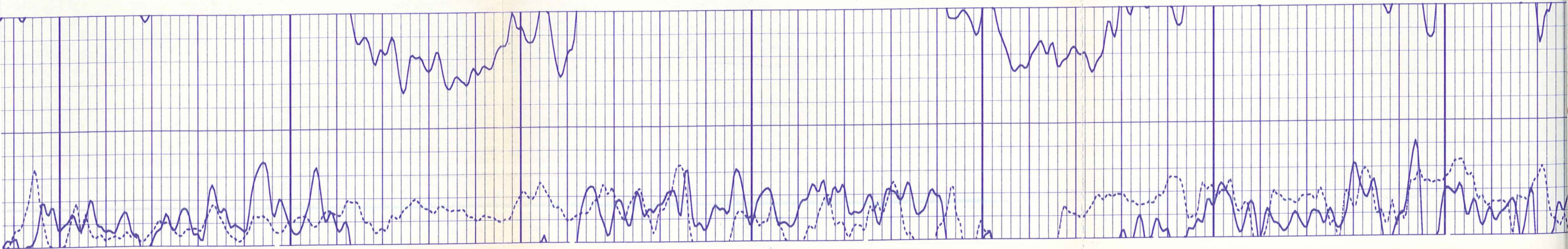


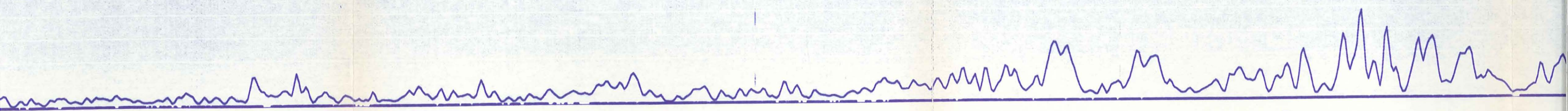
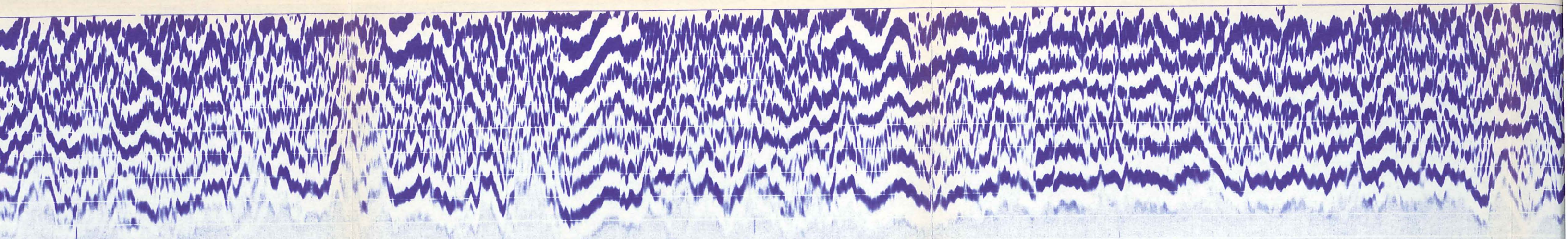


3700

3800

3900

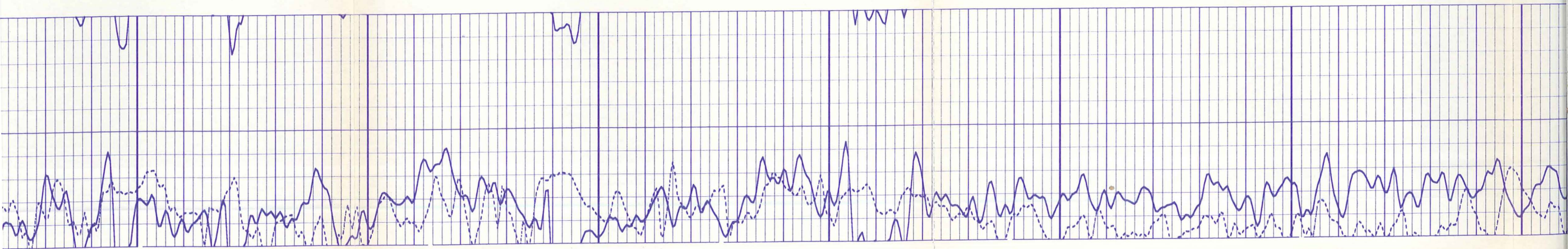


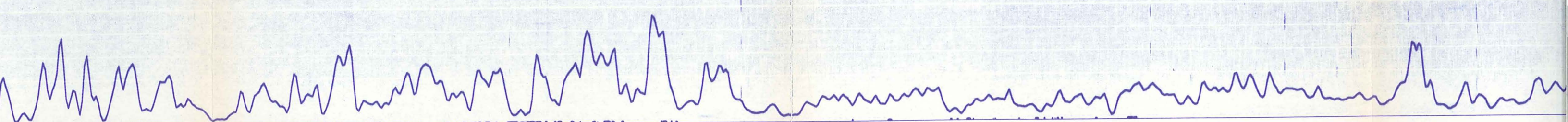
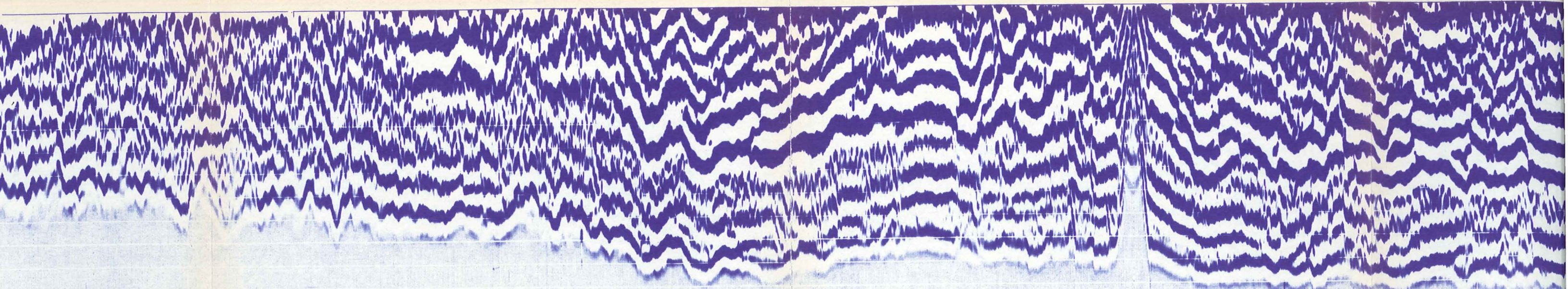


4000

4100

4200

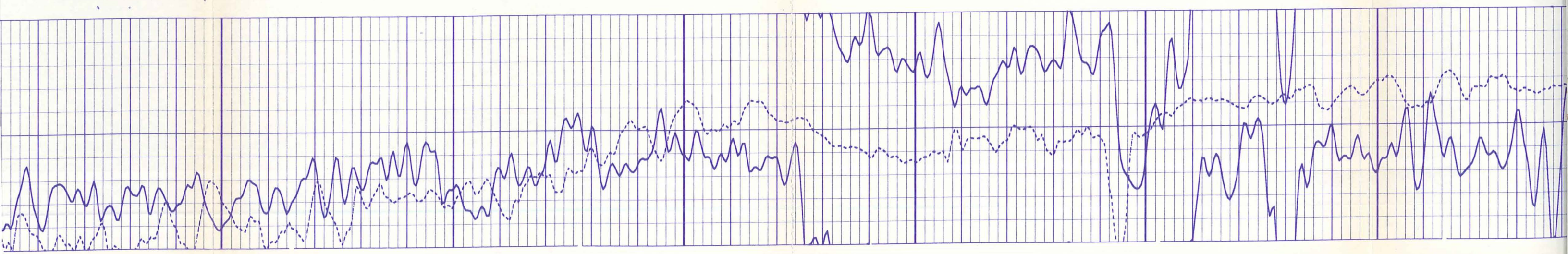


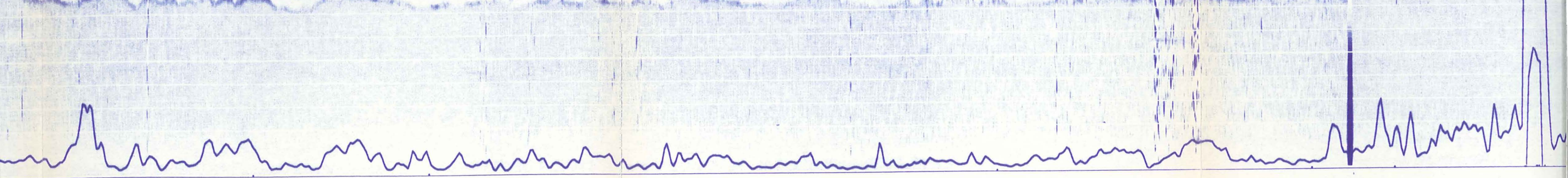
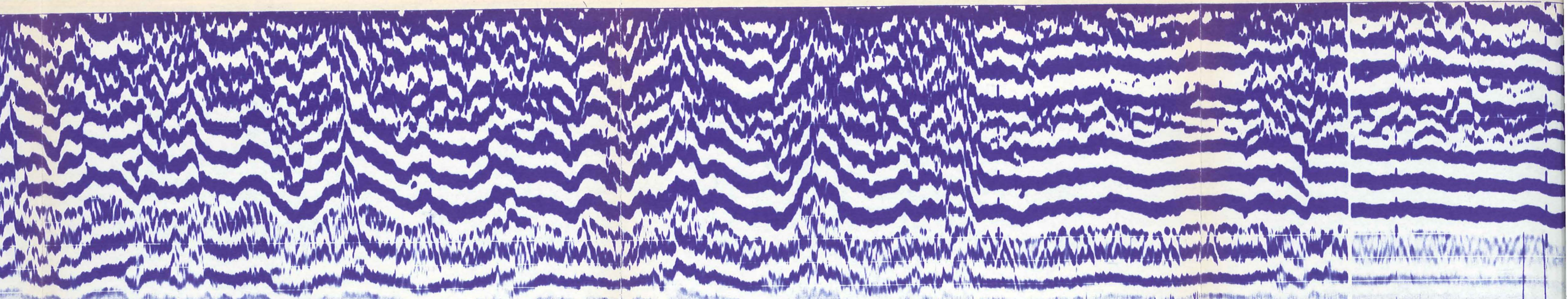


4300

4400

4500



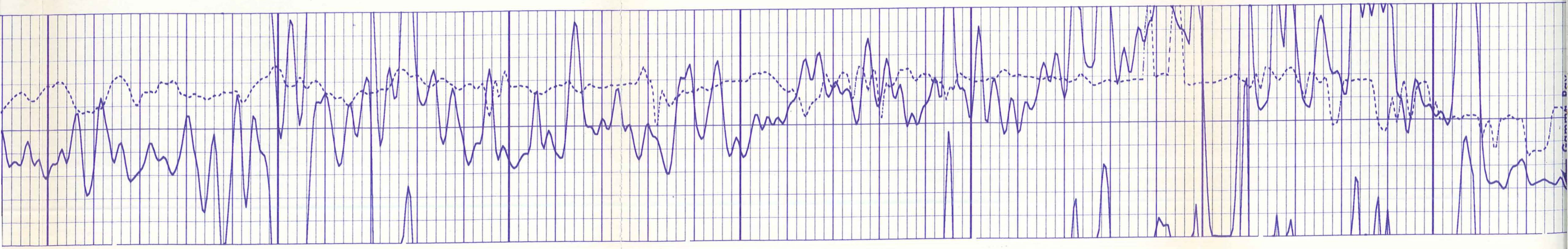


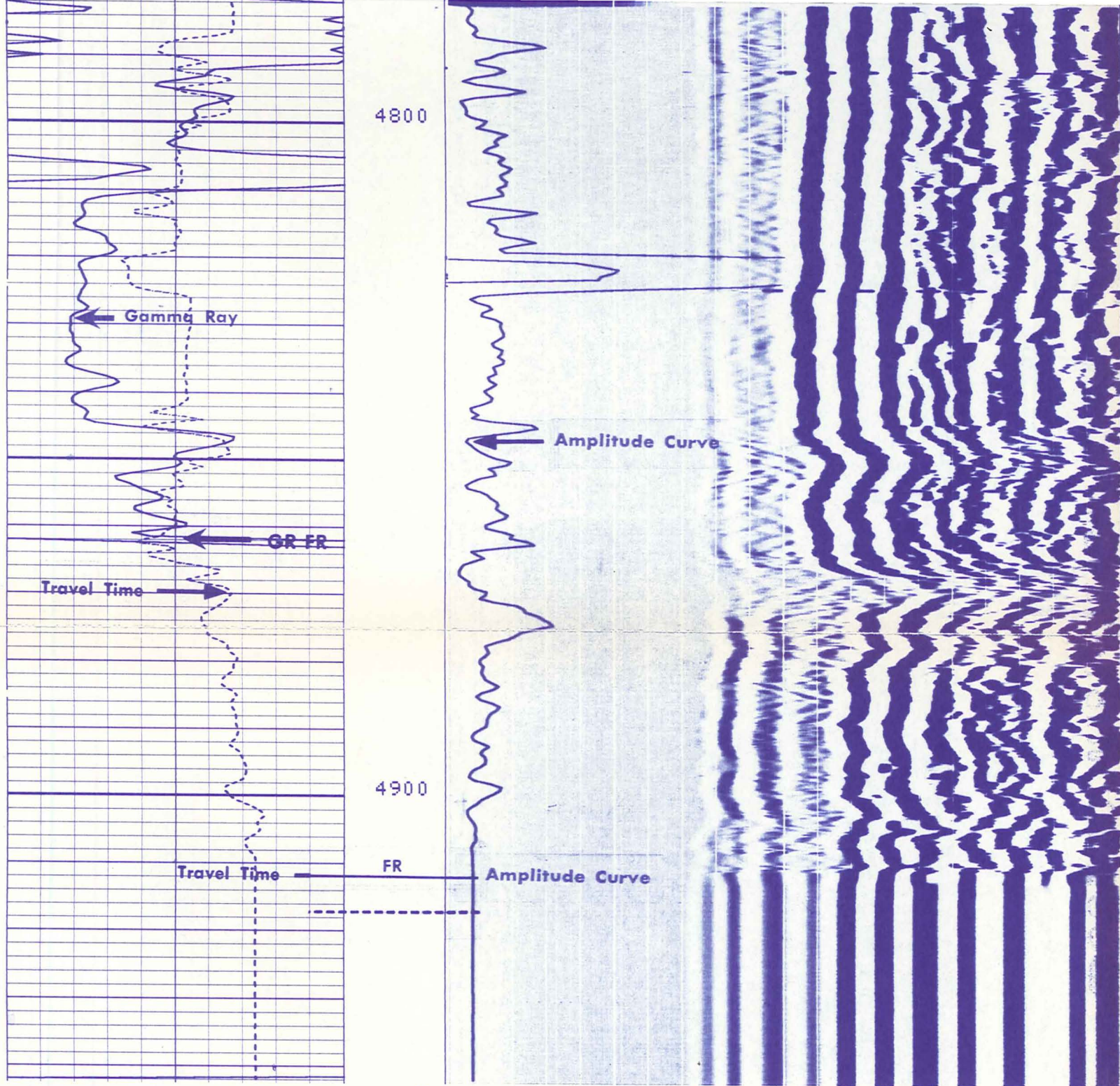
4500

4600

4700

4800





IT (US)		AMPL (MV)	
500.0	300.0	0.0	50.00
GR (GAPI)			
0.0	150.0		

8
8
8
8
8
8

10
10
10
10

BEFORE SURVEY CALIBRATION SUMMARY

PERFORMED: 78/07/07
PROGRAM FILE: IS (VERSION 10.51 78/ 5/12)

SGTE DETECTOR CALIBRATION SUMMARY

	MEASURED		CALIBRATED	UNITS
GR	BKGD	JIG		GAPI
	58	209	164	

2
2
2

CALIBRATION RECORD

COMPANY	E. G. & G.	SCHL. FR	4903
WELL	RRGP #5	SCHL. TD	4917
FIELD	RAFT RIVER	DRLR TD	4911
COUNTY	CASSIA	Elev: KB	5002
STATE	IDAHO	DF	
		GL	4988



FILE_CAB_15_DRAWER_2