



Differential Temperature Log

GL02666
FILE NO.

COMPANY E G & G IDAHO, INCORPORATED

WELL RRGP-5

FIELD RAFT RIVER GEOTHERMAL

COUNTY CASS IA STATE IDAHO

LOCATION:

NE - SW

Other Services

CALIPER,
DIFL

SEC 22 TWP 15S RGE 26E

Permanent Datum GL Elev. 4988
 Log Measured from KB, 14 Ft. Above Permanent Datum
 Drilling Measured from KB

Elevations:
 KB 5002
 DF ---
 GL 4988

Date 6-22-78
 Run No. ONE
 Type Log DIFF. TEMP.
 Depth-Driller ---
 Depth-Logger ---
 Bottom Logged Interval 3370
 Top Logged Interval 70'
 Type Fluid in Hole SALT WATER
 Salinity Ppm Cl. ---
 Density Lb./Gal. 9.9
 Level FULL
 Max. Rec. Temp. Deg. F 300
 Opr. Rig Time 2.5 HOURS
 Recorded By BOS
 Witnessed By PRESTWICH

Run No.	Bore Hole Record				Casing Record		
	Bit	From	To	Size	Wgt.	From	To
1	12 1/4	1510	TD	13 3/8	---	SURF.	1510

REMARKS

Equipment Used

Series No. 2104
 Run No. ONE
 S.O. 94405
 Tool No. ---
 Elec. No. ---
 Panel No. 24202

DIFFERENTIAL TEMPERATURE LOG DATA

Run No.	Date - Time	Tool Model No.	Tool Serial No.	Truck No.	Gradient Sens.	Differential Sens.	Logging Speed	Type Well	Log Purpose	Fluid Level	Well Pressure	Shut In Time	Injected Fluid Temp.	Inj / Prod Fluid Type	Inj / Prod Rate	Inj / Prod Volume	Inj / Prod Time	Cross Flow Check
1	6-22 2200	2104	---	HL 6110	240	310	RECORDED	GEOTHERMAL	---	FULL	---	---	---	---	---	---	---	---
2																		
3																		
4																		

INSTRUMENT DATA



Instrument Dia. 1.5"

TEMPERATURE SURVEY

TEMPERATURE - °F



TEMPERATURE - °F

280
180
80

330
280

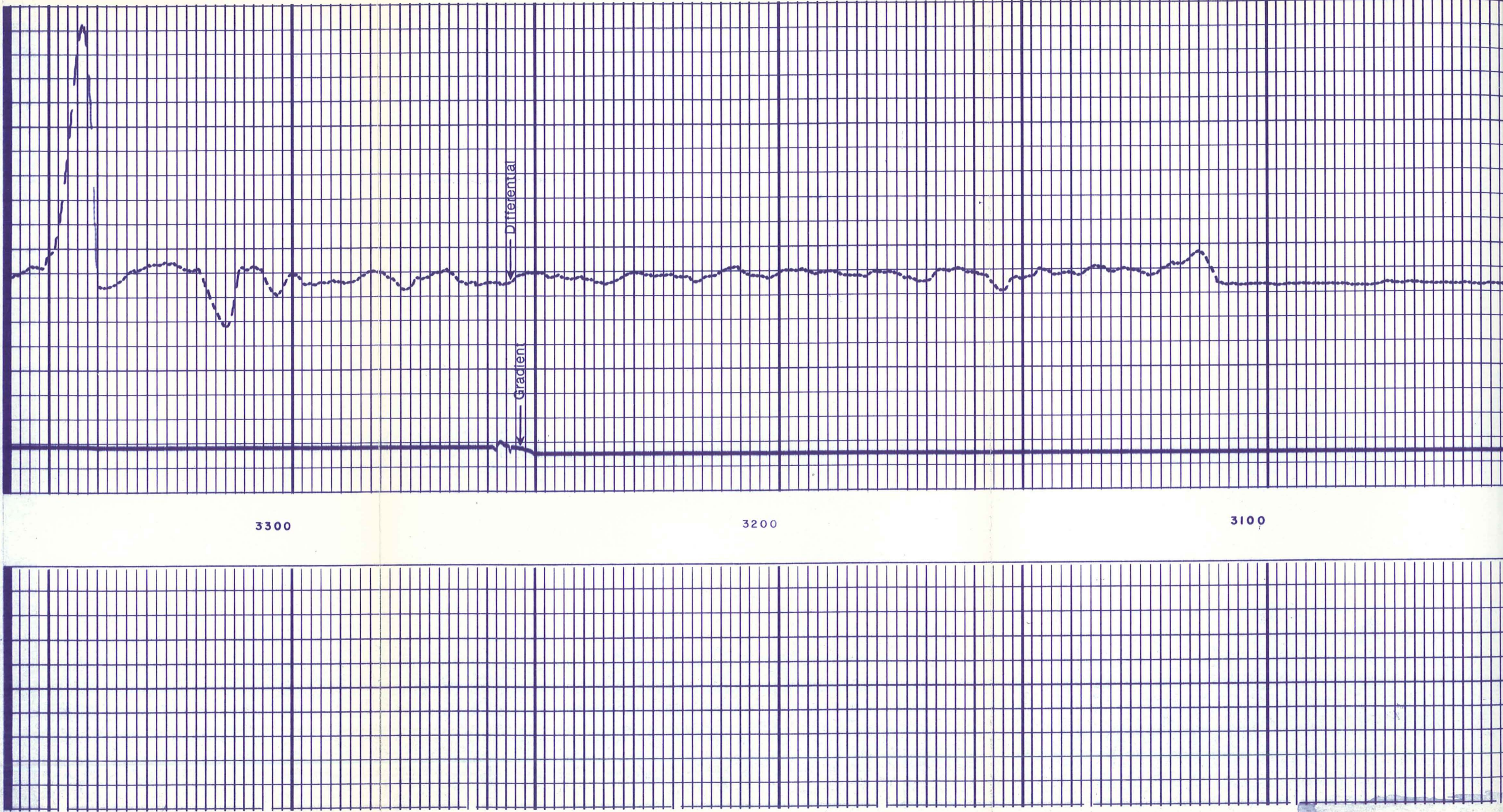
3300

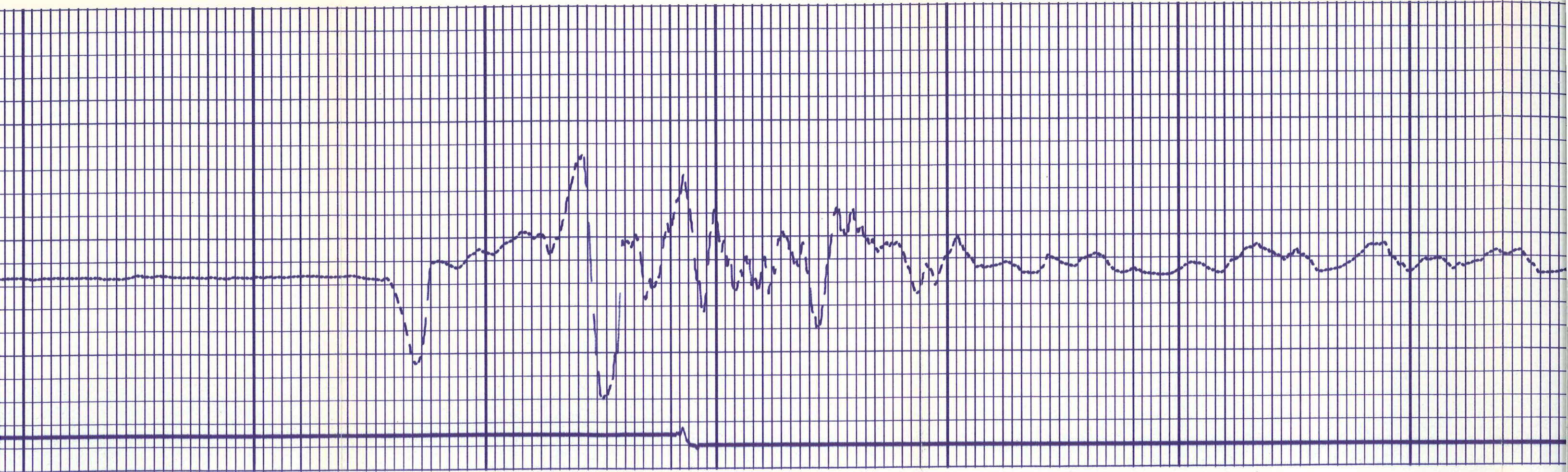
3200

3100

Differential

Gradient



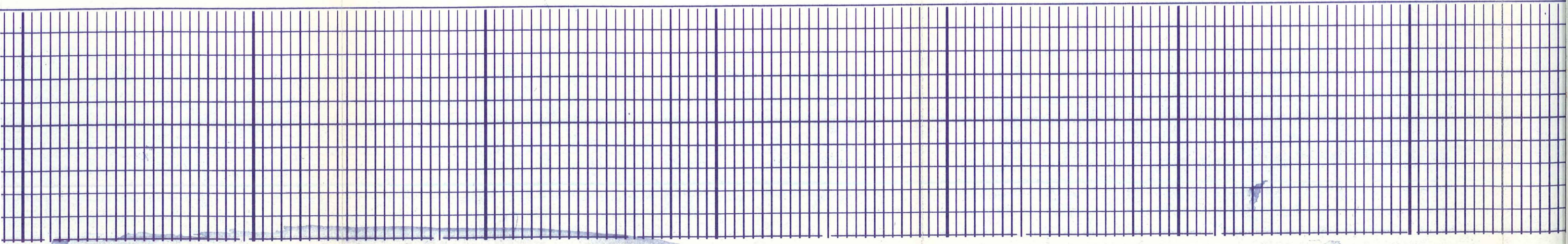


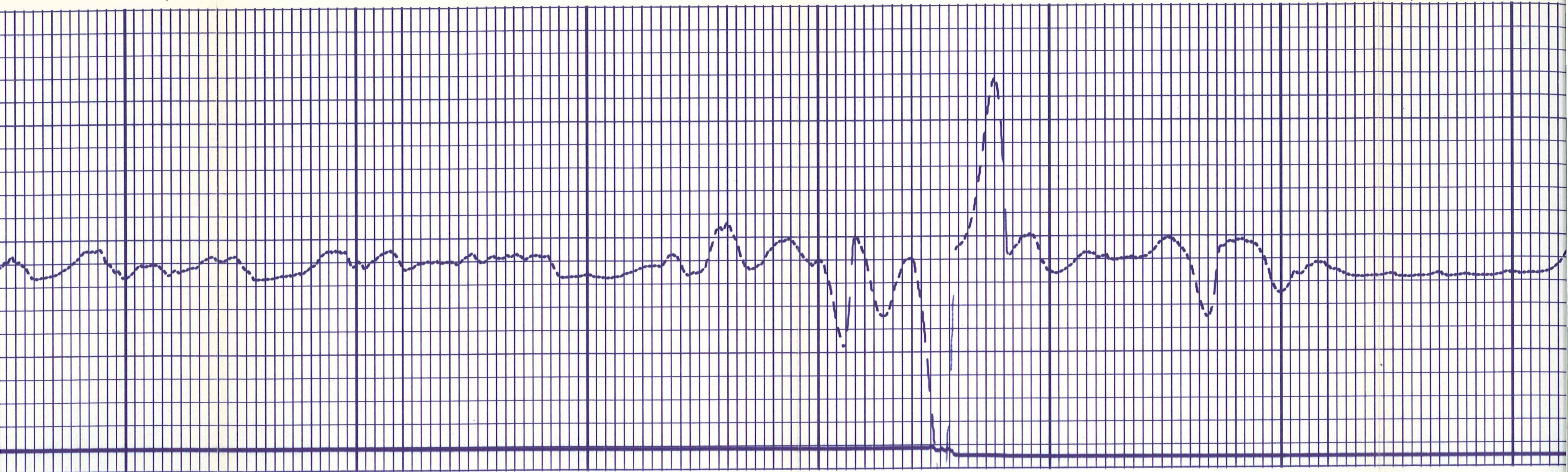
00

3000

2900

2800



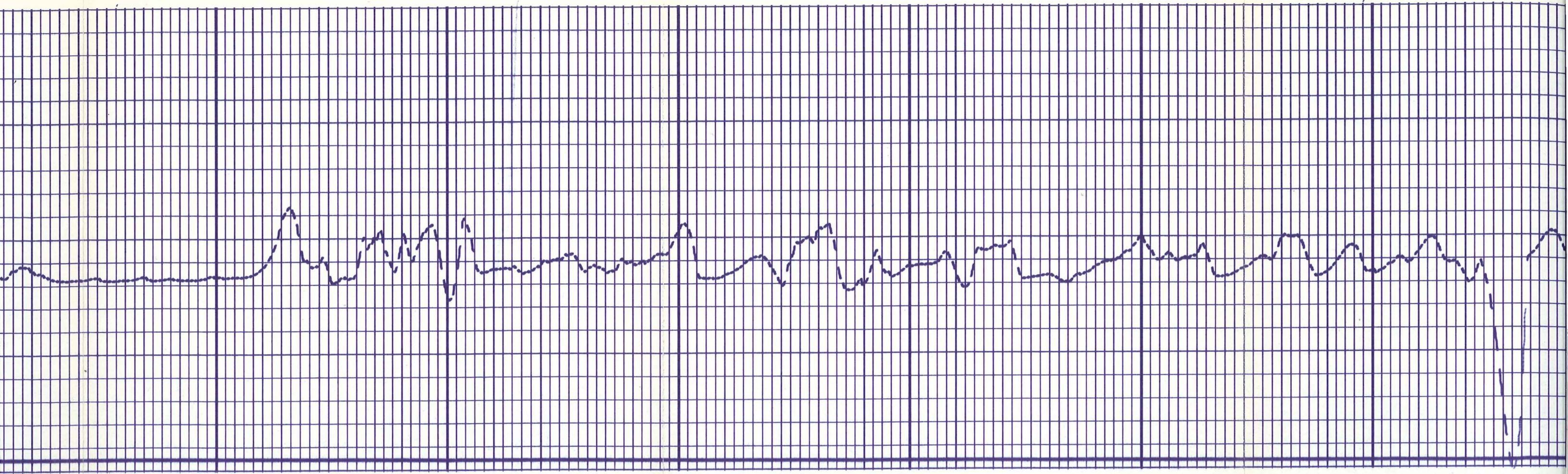


2800

2700

2600

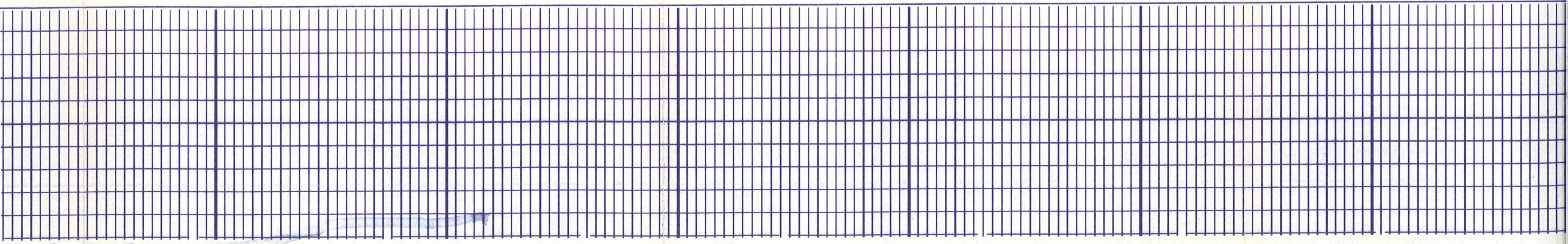
2500

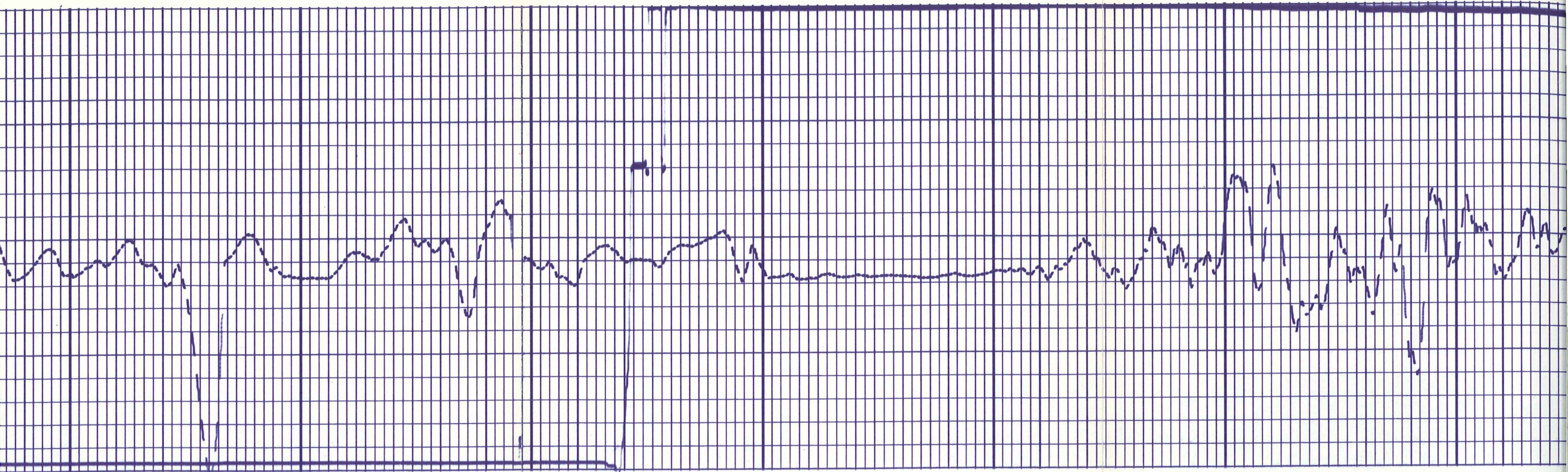


2500

2400

2300

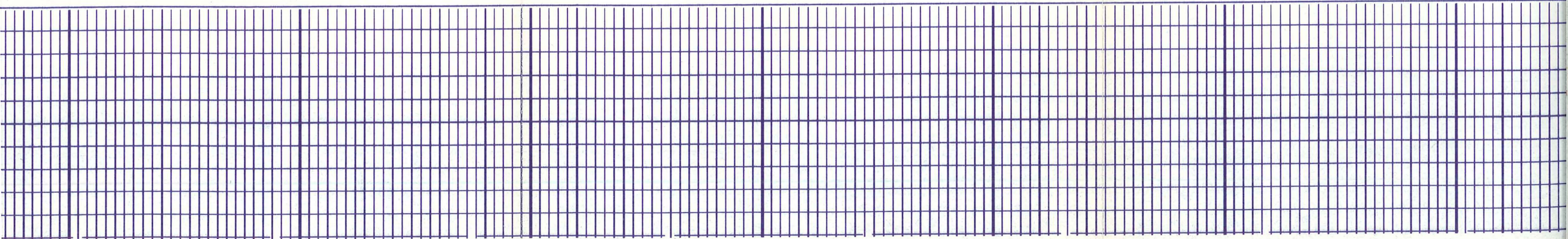


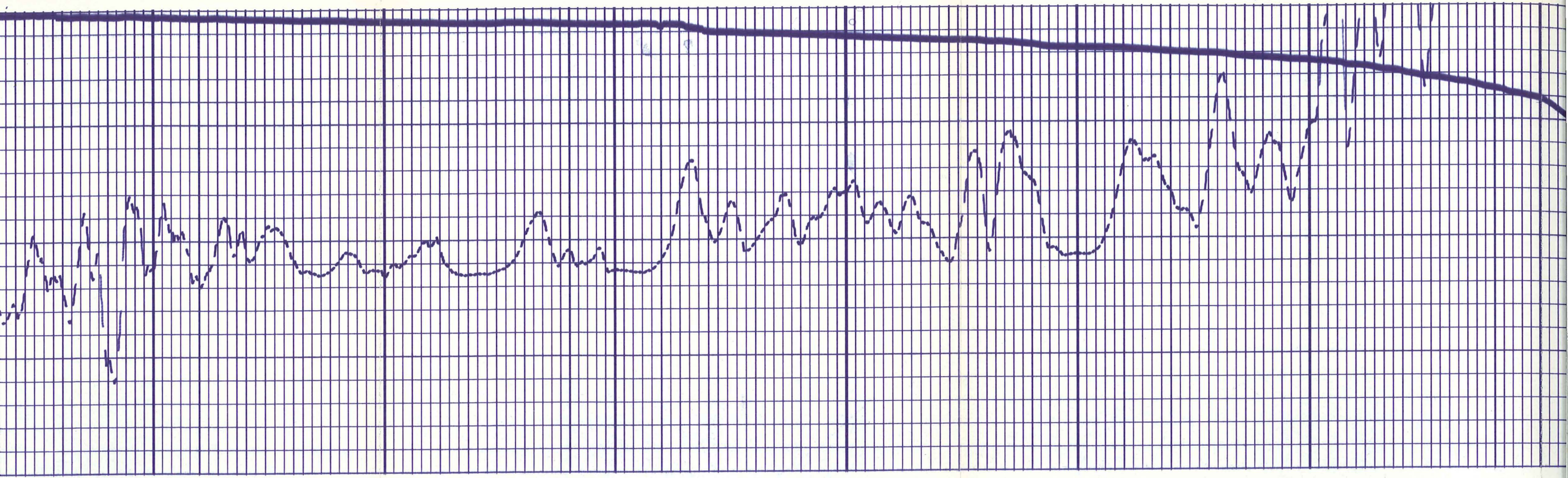


2200

2100

2000

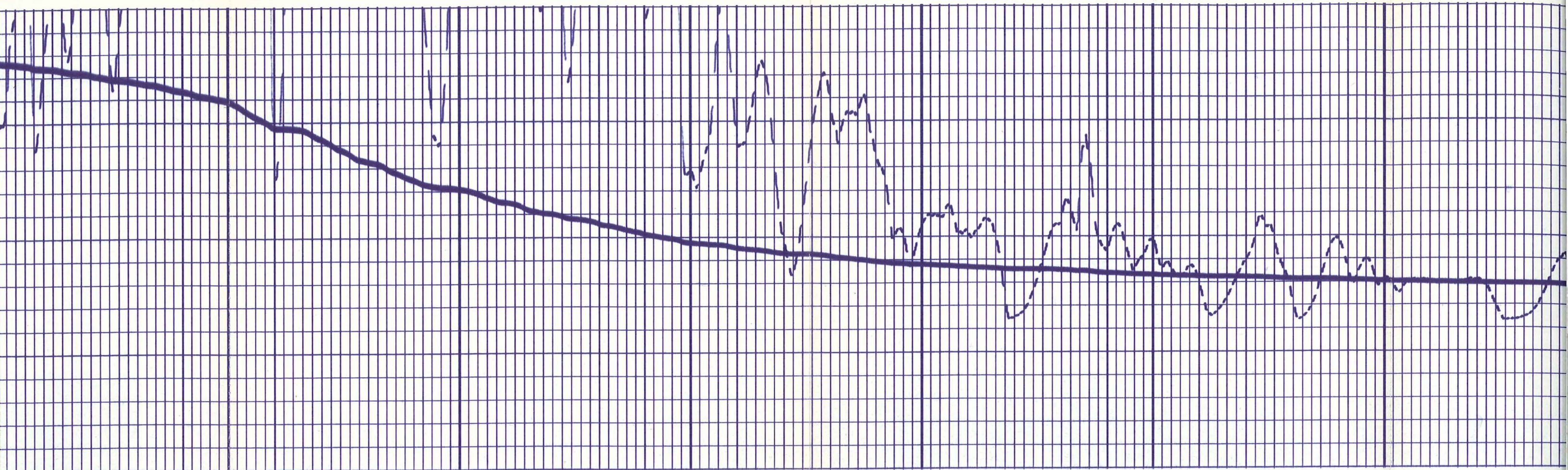




1900

1800

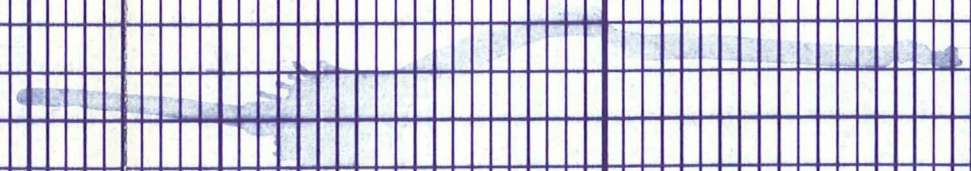
1700

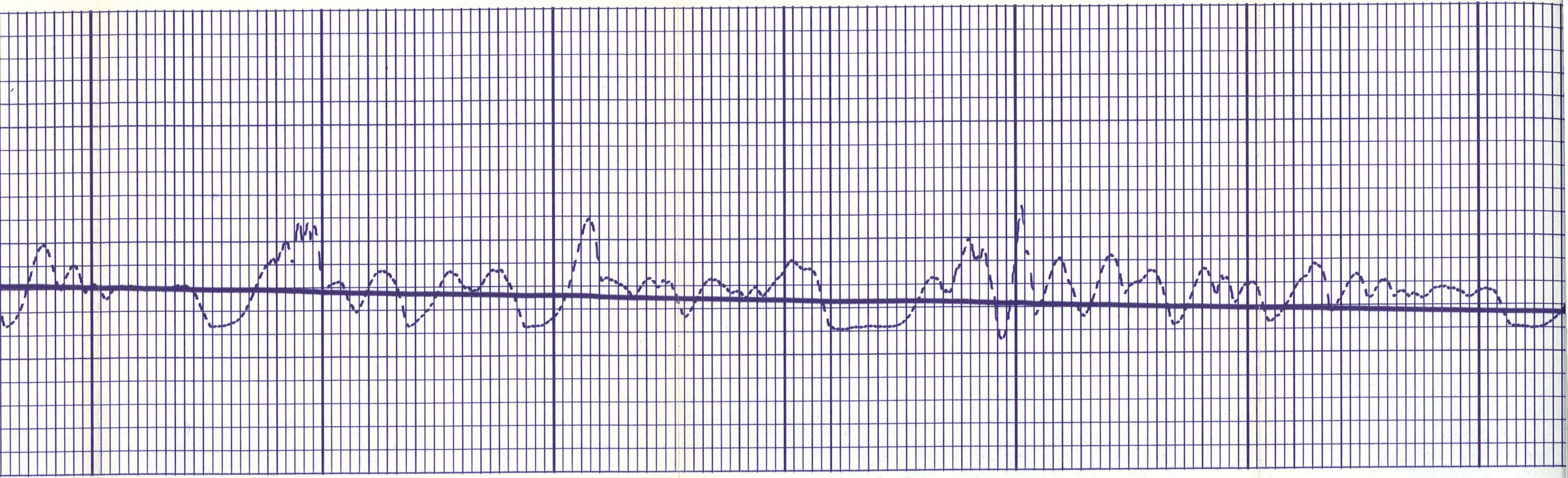


1600

1500

1400



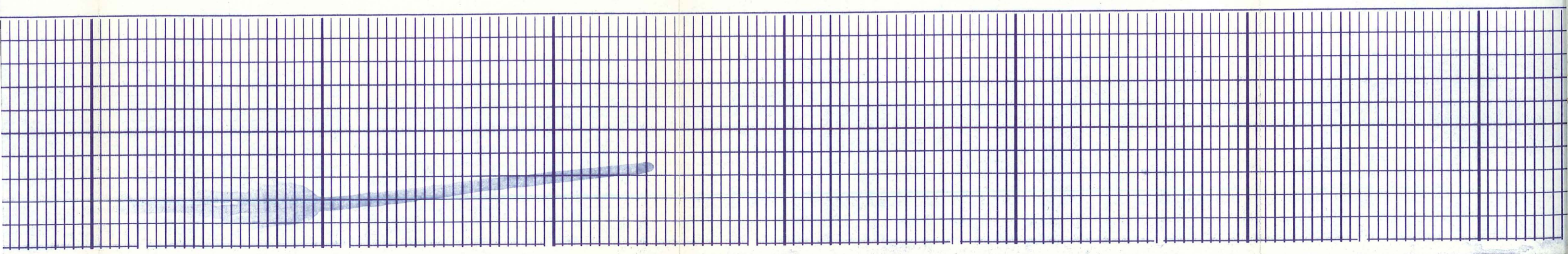


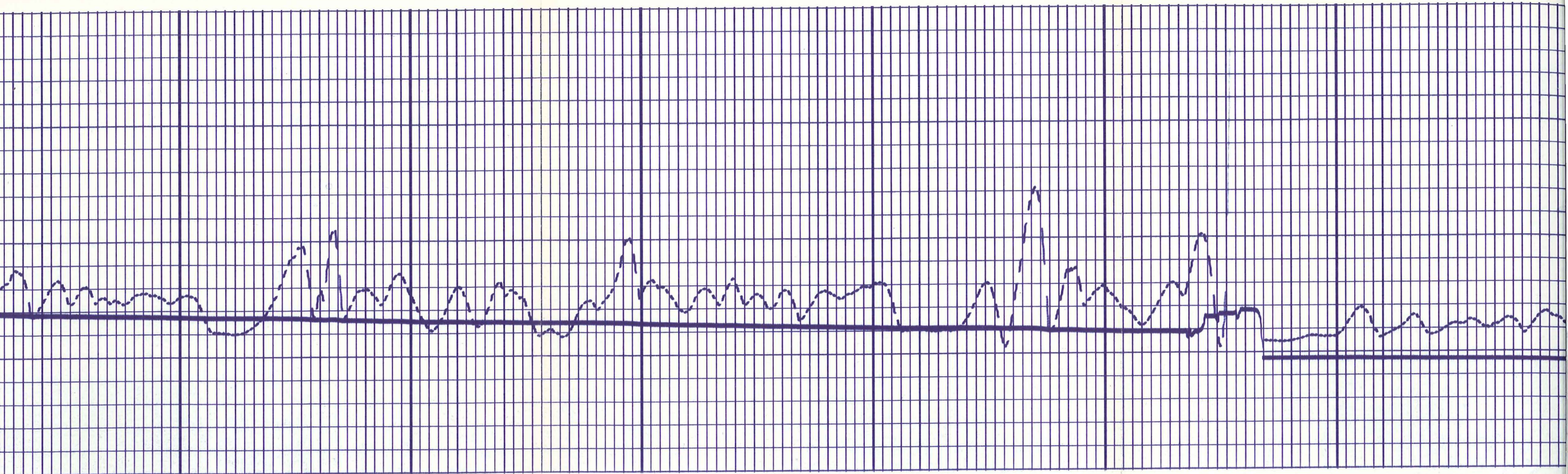
1400

1300

1200

1100



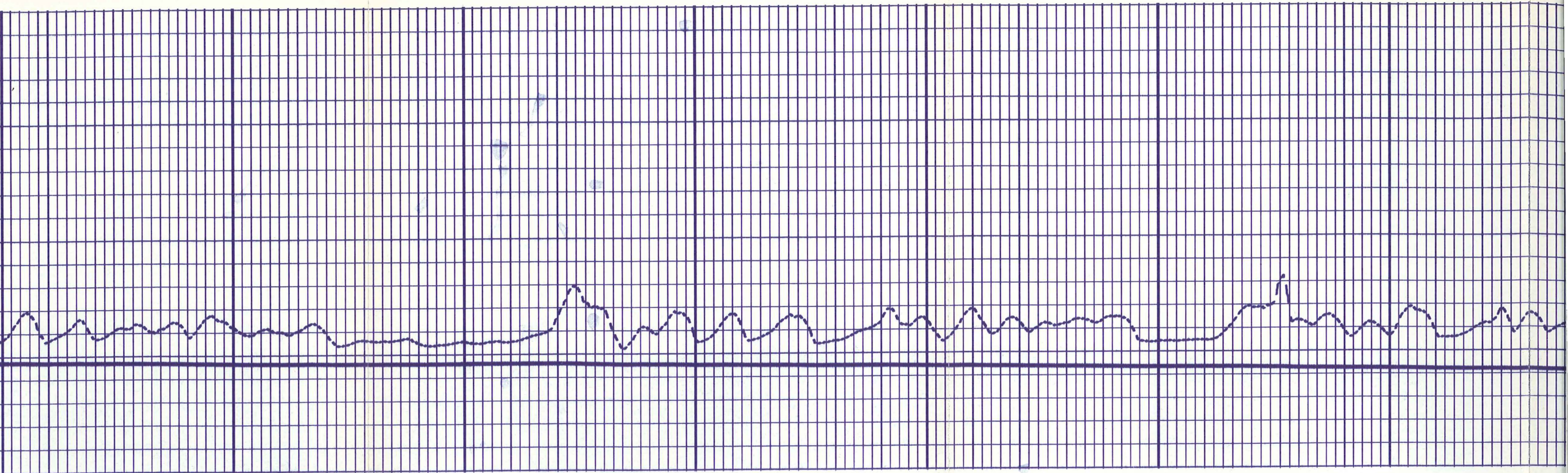


1100

1000

900

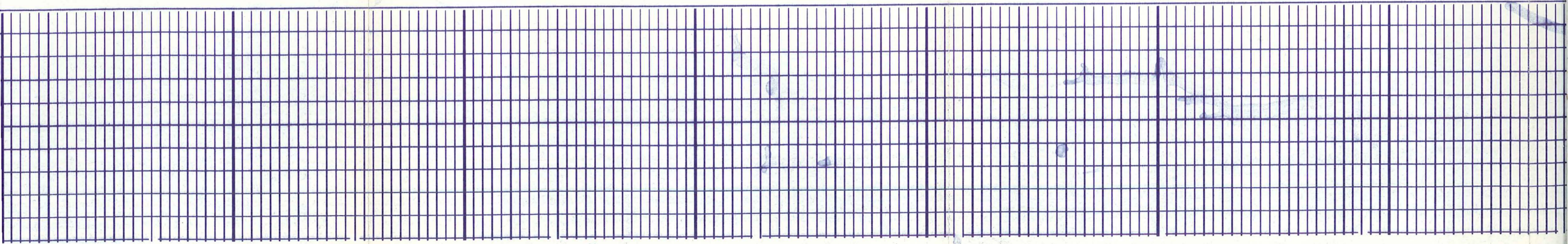
800

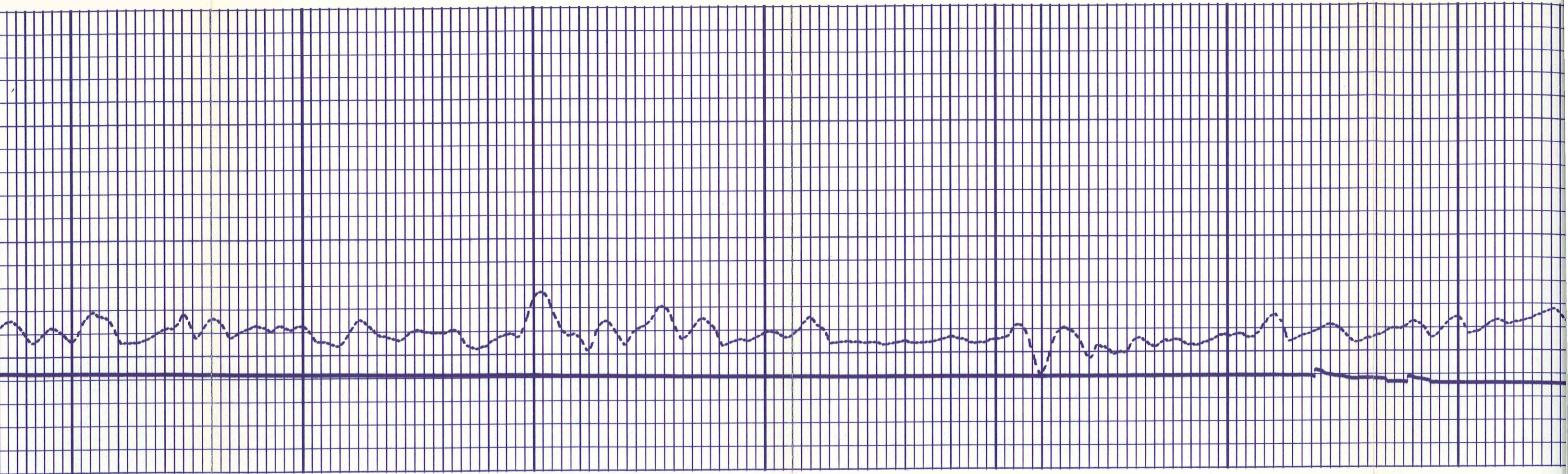


800

700

600

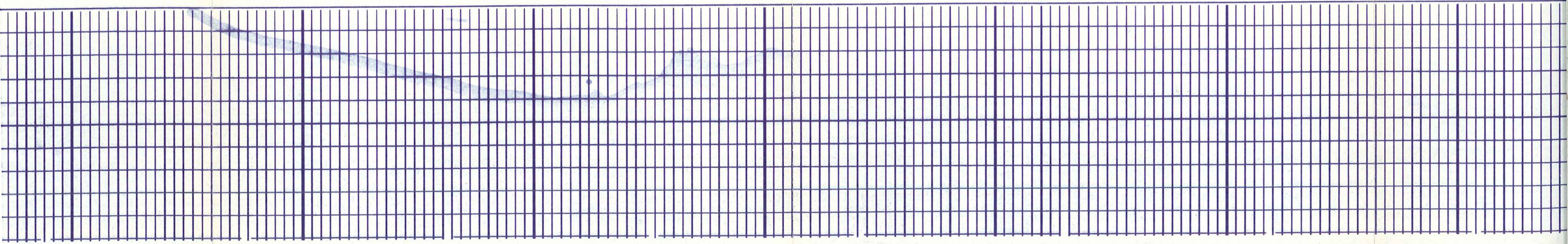


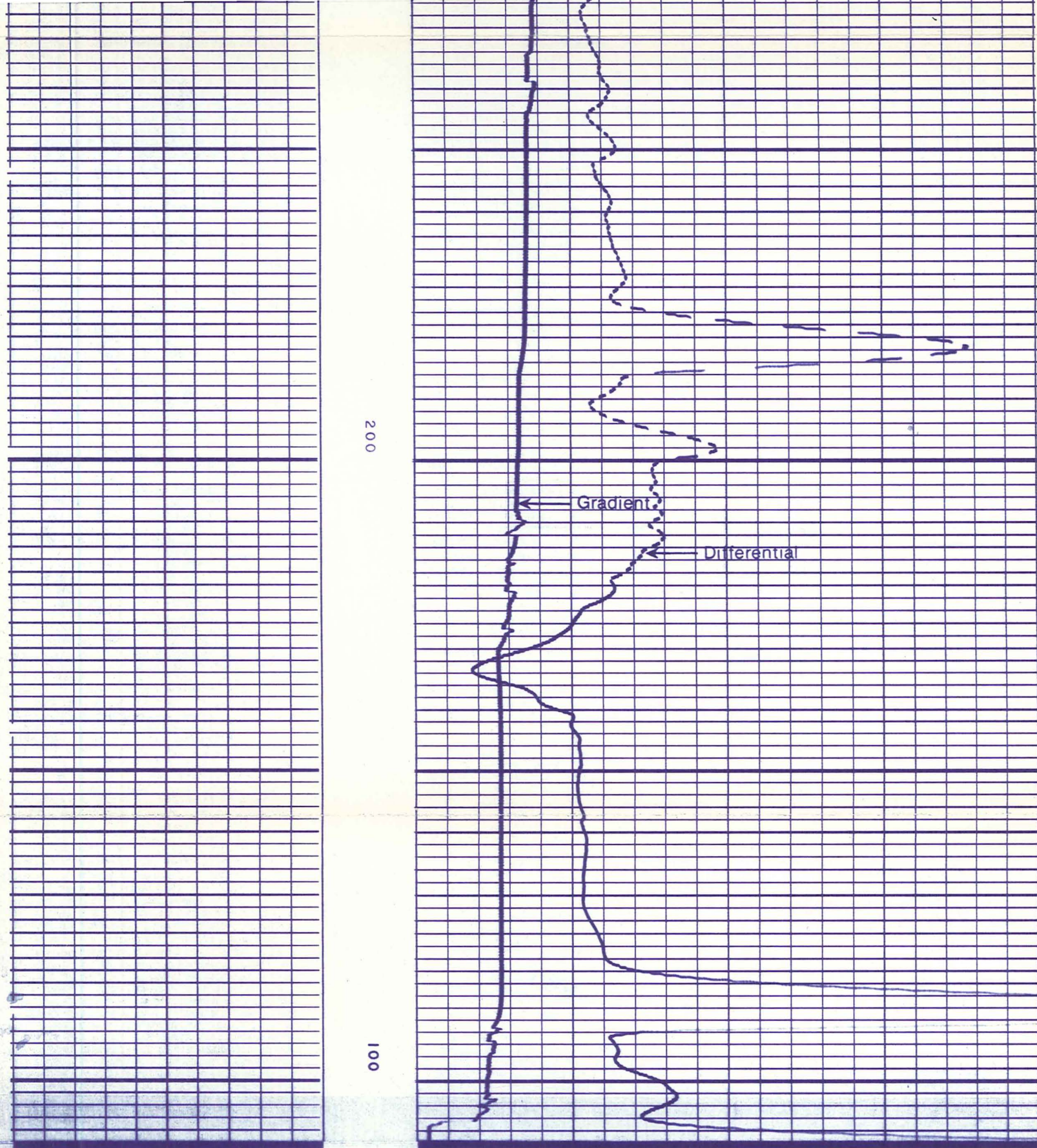


500

400

300





280 330 180 280

TEMPERATURE - °F

TEMPERATURE SURVEY

Company	E G & G IDAHO, INCORPORATED	Drillers T.D.	---
Well	RRGP-5	Log F.R.	3370
Field	RAFT RIVER GEOTHERMAL	Log T.D.	---
County	CASS IA	Elevations:	
State	IDAHO	K.B. 5002	D.F. --- G.L. 4988



Division of Dresser Industries, Inc.